

SOUVENIR PROGRAMME

CITADEL

HOME COMING DAY

FOOTBALL

CITADEL

VS.

CLEMSON

DEC. 8
1928



THE CITADEL
ARCHIVES AND MUSEUM

HAGOOD STADIUM, CHARLESTON, S. C.





City of Charleston

Executive Department

THOMAS P. STONEY
MAYOR

To the Home Coming Alumni of the Citadel and our Visiting Friends:

Greetings:

As an advocate of all forms of athletics which make for the development of good health and good sportsmanship, I take keen pleasure in the fact that, through the foresight of its city officials and in particular the untiring efforts of Alfred Von Kolnitz, Cotesworth P. Means, Walter B. Wilbur and members of City Council, Charleston, has been so thoroughly equipped, from the athletic standpoint, as to make possible the proper staging of such as the Citadel - Clemson football game on the occasion of the Citadel Home Coming Day, December 8th, 1928.

In providing the Johnson Hagood Memorial Stadium the preceding Administration, of which I was Mayor, through the hearty cooperation of City Council and of public-minded citizens gave to Charleston that which, in my opinion, was the finest gift possible to the public. Here can the young athletes of the City and State enter into the athletic contests which make for the up-building of a virile, healthy citizenry and, with comfort and convenience, can the sports-loving public assemble for wholesome recreation.

We are proud of this achievement and proud that on this occasion we can welcome our visiting friends from the Pee Dee, Middle, and Piedmont sections of the State in a stadium fitted to their proper reception.

The present Administration, like its predecessor, stands four-square for the promotion of clean sport and wholesome athletics; it believes that every effort should be made to encourage this form of recreation among its citizens, and, to the end that adequate provision may be made for the encouragement and accommodation of athletic sports of all kinds, it has pledged itself to do all within its power to give to this community and its friends suitable recreational centers.

As Mayor of Charleston I welcome the returning alumni and the many visitors of this occasion and, as an adherent of civic sports, I greet heartily the splendid young men of Clemson and the Citadel who make up the opposing teams.

Cordially,

Thomas P. Stoney

Mayor



OFFICIAL
SOUVENIR PROGRAM
OF THE
CITADEL - CLEMSON
HOME COMING
FOOTBALL GAME

JOHNSON HAGOOD STADIUM

DECEMBER 8th, 1928

CHARLESTON, SOUTH CAROLINA

Issued under the direction of the
CHARLESTON PHOTO - ENGRAVING COMPANY

Under the auspices of
THE CITADEL ATHLETIC ASSOCIATION





HOME COMING DAY

PROGRAM

DECEMBER 7.

Citadel Club Dance. Alumni Hall,
9 until 2 o'clock.
Script.

DECEMBER 8.

- 9 A. M.—Breakfast meeting at the Francis Marion Hotel,
Executive Committee, Association of Graduates.
- 10 A. M.—Registration, front sally port, main barracks.
- 11 A. M.—Review of corps of Cadets.
- 12 Noon—Luncheon, Indian Hill.
- 3 P. M.—Clemson-Citadel football game.
- 7 P. M.—Alumni Banquet and business meeting.



CITADEL FOOTBALL SPONSOR



MISS CAROLYN LEONARD

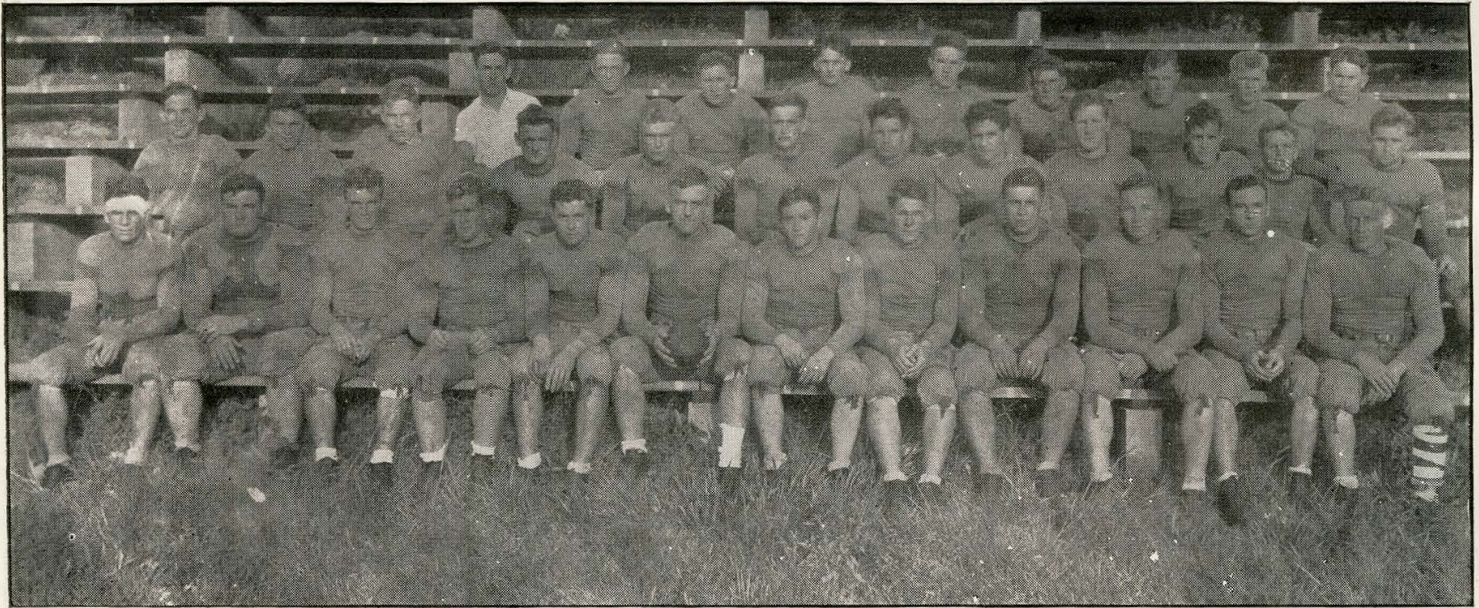
Exclusively—ICE CREAM, SODA and
CONFECTIONERY

—COURTEOUS SERVICE—

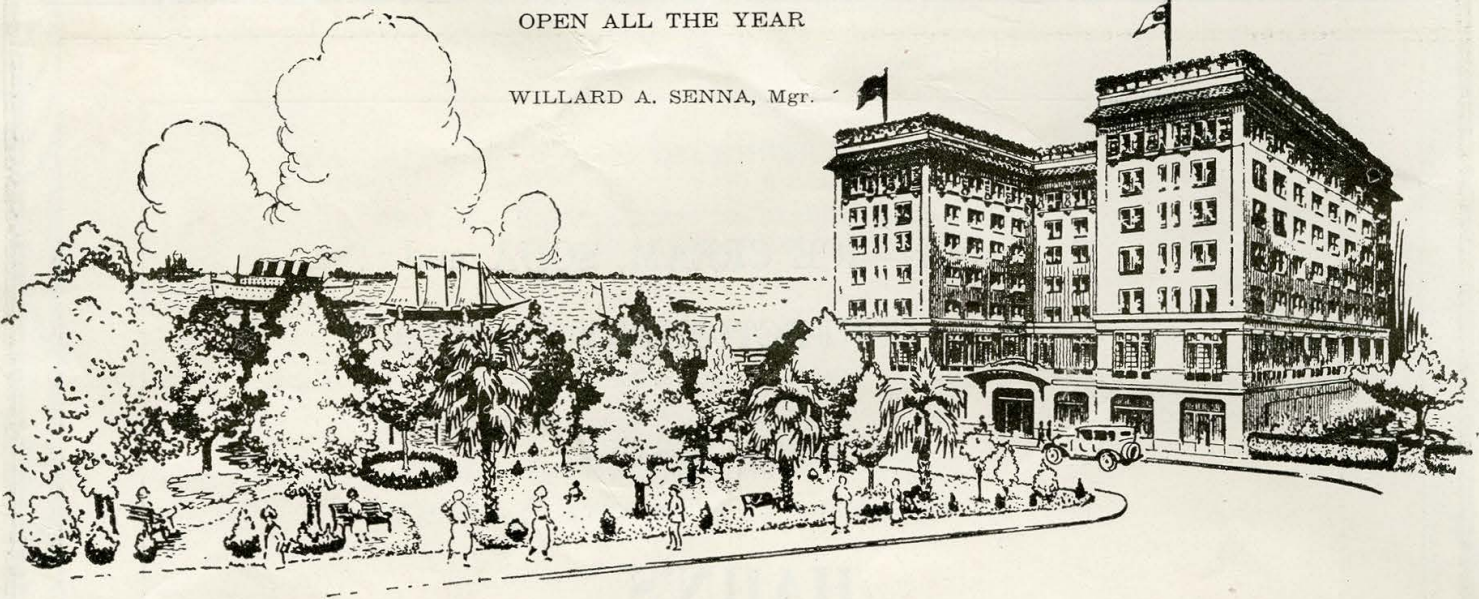
HAHN'S

PHONES: { 1554
 { 42

313 KING STREET



CLEMSON 1928 FOOTBALL SQUAD



OPEN ALL THE YEAR

WILLARD A. SENNA, Mgr.

THE FORT SUMTER HOTEL, superbly located on the Battery. Terrace Restaurant and long verandas overlook gardens, harbor and the Atlantic Ocean beyond. Fireproof construction. Accommodations for 350 guests. Every room with private bath. Nearness of Gulf Stream gives more days

of sunshine and fewer of fog than anywhere else on Atlantic Coast. Golf, sea-bathing, tennis, horseback riding, yachting, fishing, motoring, dancing. Write for illustrated booklet, "Charleston, Historic City of the Old South."

FORT SUMTER HOTEL

Newest and Finest

BATTERY BOULEVARD

CHARLESTON, S. C.

PASTIME
AMUSEMENT
COMPANY

— OPERATING —

Charleston's Leading Theatres

GLORIA,
GARDEN, VICTORY,
ACADEMY, MAJESTIC.

THOMPSON TRANSFER
COMPANY

YELLOW CABS
YELLOW COACHES

Special Trips in Busses Anytime,
Anywhere. Any Number

PHONE 122

PLENGE'S

3 GOOD
DRUG
STORES

CHARLESTON
ENGINEERING
AND
CONTRACTING
COMPANY

CLEMSON ALUMNI ASSOCIATION



GEO. D. GRICE
Secretary and Treasurer



WM. SCHIRMER
President



C. W. LEGERTON
Board of Governors

J. BETTS SIMMONS,
President & Treasurer

W. HARRY SIMMONS,
Vice-President & Secretary

M. H. LAZARUS COMPANY
HARDWARE, ETC.

JOBBERS AND RETAILERS OF
BUILDERS' HARDWARE, HOUSE FURNISHING GOODS,
SPORTING GOODS

KING AND HASELL STREETS
CHARLESTON, S. C.

CHARLESTON HOTEL
(INCORPORATED)

EUROPEAN PLAN

RATES \$1.50 UP

W. J. HANLON,
Manager

JOHNSON'S
DRUG STORE

C. B. JOHNSON, Proprietor

AGENCY FOR

Hollingsworth Unusual Candies

PRESCRIPTIONS A SPECIALTY

369 KING STREET

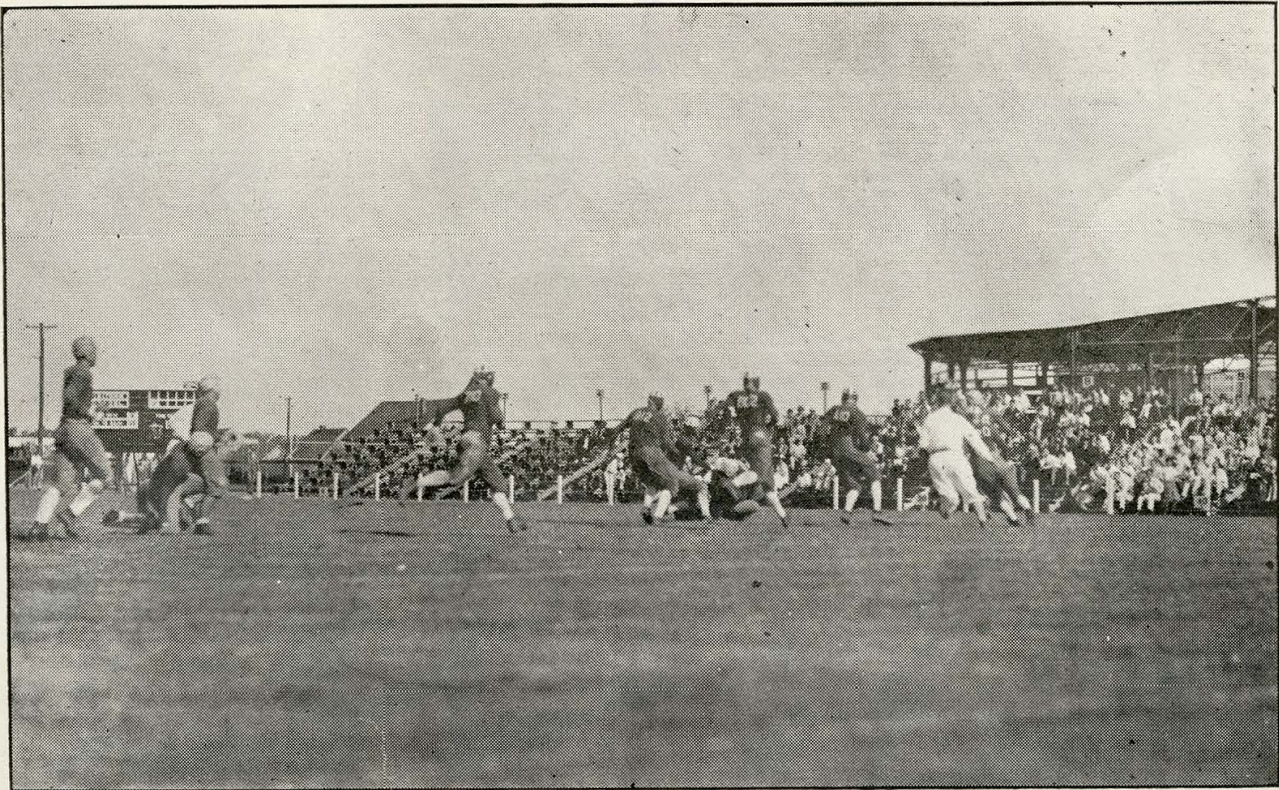
CONDON'S
HOUSE OF BETTER VALUES

SHOE
STORE

431 KING STREET

COMPLIMENTS
OF

SOUTH CAROLINA
POWER
COMPANY



CITADEL AND STETSON, OCTOBER 6, 1928

C. H. NOLTE, Pres.

A. J. W. GORSE, Treas.

WALL PAPER

PAINTS

FOR

AUTOMOBILES—SIGNS AND HOUSES

ATLANTIC PAINT COMPANY

207 MEETING STREET Near Market

GEO. L. HOCKEMEYER, V.-Pres.

A. M. STONE, Sect'y.

WE WELCOME—

THE HOME-COMING OF
THE CITADEL

This advertisement is given complimentary to the Monetta Asparagus Growers Association and S. C. Asparagus Association.

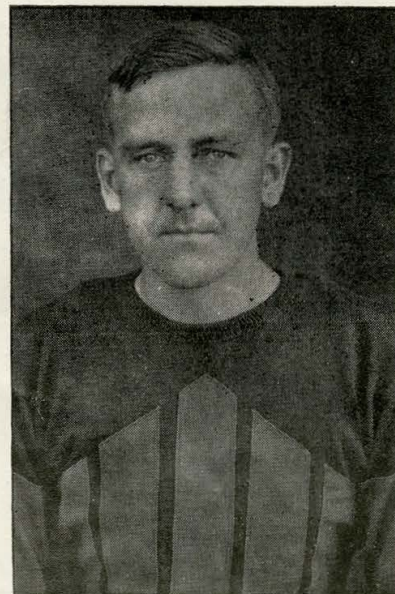
WOODSTOCK MANF'G. CO.

Charleston, S. C.



COACH JOSH CODY

CLEMSON COACH
AND
CAPTAIN



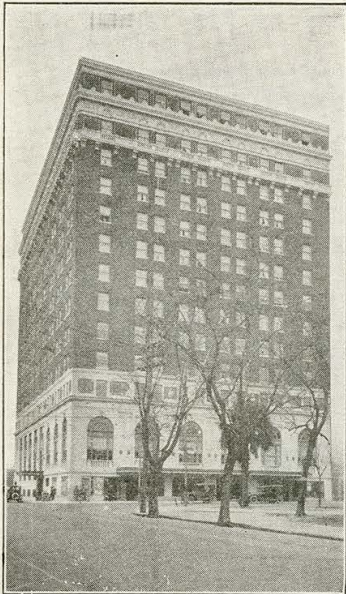
CAPT. O. K. PRESSLEY

Coca-Cola

CHARLESTON COCA - COLA
BOTTLING CO.

MEETING AND CALHOUN STREETS

CHARLESTON, S. C.



FRANCIS MARION HOTEL

ONE OF THE
SOUTHEASTERN HOTELS CO. CHAIN

* * *

"A Good Hotel in a Good Town"

KING STREET AT CALHOUN

1ST. QUAR.

2ND. QUAR.

3RD. QUAR.

4TH. QUAR.

CITADEL

CLEMSON

WIETERS & COMPANY

OUTDOOR ADVERTISING

POSTERS, PAINTED AND ELECTRIC DISPLAYS
COMMERCIAL SIGNS

517 MEETING STREET

TELEPHONE 724

CHARLESTON, S. C.



CITADEL AND DAVIDSON OCTOBER 20, 1928

— THE —
SOUTH CAROLINA NATIONAL BANK

Capital	-	-	-	\$ 1,500,000
Surplus	-	-	-	\$ 1,200,000
Resources	-	-	-	\$29,744,869

COLUMBIA

CHARLESTON
-:-

GREENVILLE

The Largest Bank in South Carolina

Promoting the Progress of
SOUTH CAROLINA
Since 1834



E. C. SEABROOK



CARL P. PRAUSE
COACH



JACK SIMMONS



JACK ROGERS

CITADEL
COACHES



GEO. C. ROGERS



COMPLIMENTS TO

THE CITADEL
CORPS AND ALUMNI



HOME - COMING DAY

DECEMBER 8, 1928

 **J.A. VON DOHLEN**
STEAMSHIP COMPANY
 TRANS ATLANTIC SERVICES FROM CHARLESTON

A BIG DAY --- A BIG GAME ---

AND --

A BIG BOTTLE OF WED TO PURITY MILK

WEST END DAIRY

Charleston, S. C.

LARGEST DISTRIBUTORS
OF

DAIRY PRODUCTS

IN THE CAROLINAS



CAPT. McALLISTER

The Citadel is essentially a military college, and all the students live in Cadet Barracks, under the same discipline as in use at West Point. From reveille to taps the cadet passes a full and very busy day, every hour of his time being accounted for, and its appropriate task performed.

It is the policy of The Citadel not only to permit, but to foster and encourage certain extra curricula activities known as Cadet Affairs. Such affairs include intercollegiate athletics, Y. M. C. A., social functions, cadet publications, dramatics, and cadet supply store. The department of intercollegiate sponsors football, basketball, baseball, tennis, swimming, and fencing. Boxing will be introduced this year. Track activities have not been significant due to a lack of proper facilities. It is hoped that this sport can soon be taken up. Social activities include five formal dances during the year, and several informal dances during each month. The Citadel is proud of its dances which are always enjoyable to visitors as well as to guests. The publications include the cadet weekly paper called, The Bull Dog, and the cadet annual, called The Sphinx. All cadet activities are carried on largely by the Cadets themselves under faculty supervision.

The Y. M. C. A. looks after the religious training of the cadets. Daily Chapel services are attended. Regular Sunday morning services are conducted by various ministers of the city. The work of the Cadet Y. M. C. A. is supervised by a full time secretary specially trained in this field.

Berlin's
KING AT BROAD ST.
CHARLESTON'S GREATEST MEN'S



CITADEL AND ERSKINE OCTOBER 27, 1928



Located nearer than anything to everything
of interest in Historic Charleston

THE ST. JOHN

J. W. IVEY, Manager

Rooms, \$1.00, \$1.50, \$2.00 and \$2.50
Per Day

EUROPEAN PLAN

Meeting and Queen Streets

CHARLESTON, S. C.

THE OLDEST NATIONAL BANK IN SOUTH CAROLINA

PEOPLES FIRST NATIONAL BANK

OF CHARLESTON

Capital and Surplus Over \$1,500,000.00

MAIN BANK
BROAD AND STATE

CENTRAL BRANCH
KING AND WENTWORTH STREETS

FIRST NATIONAL BRANCH
544 KING STREET, (Opp. Cannon)



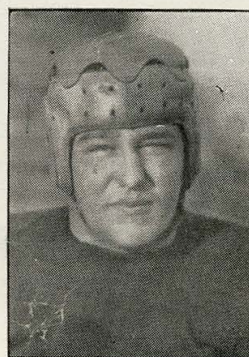
DUVALL



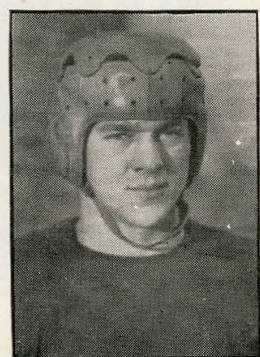
WEEKS



CAPT. KING



SKELTON



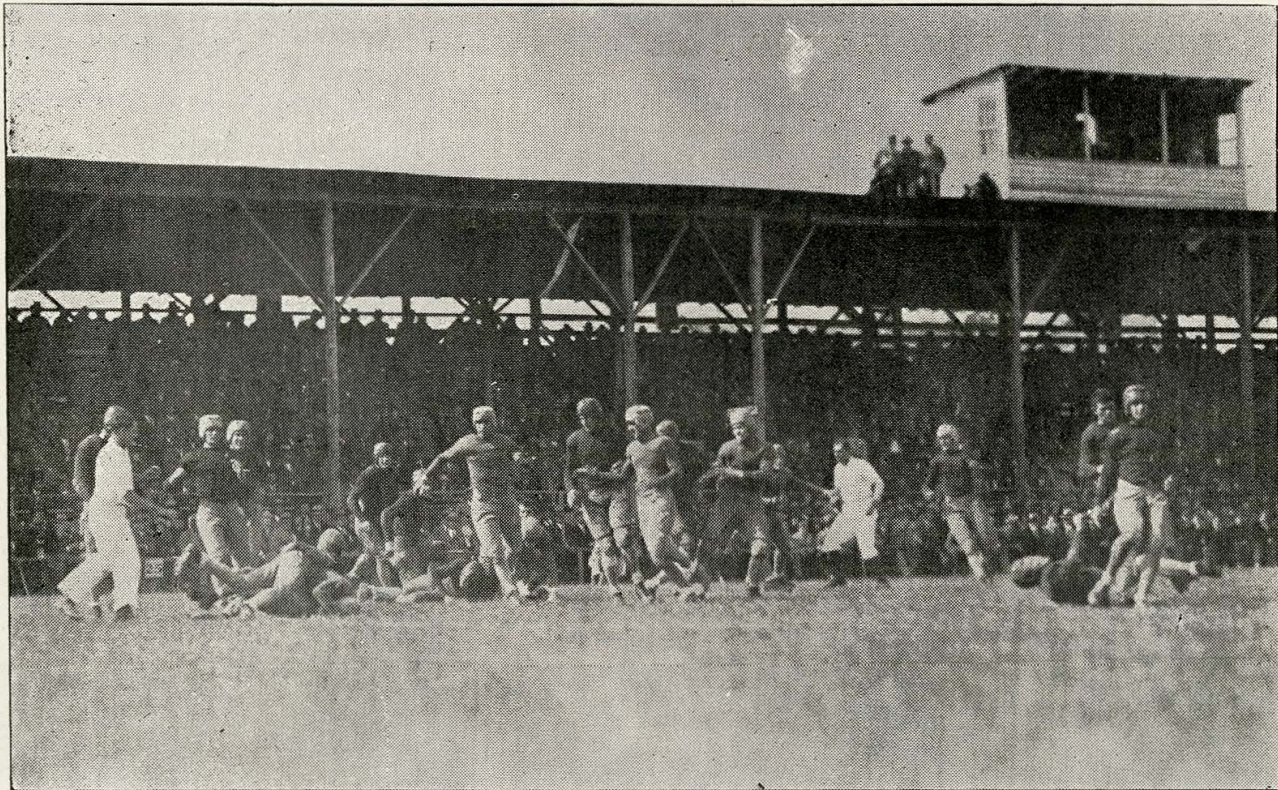
HOWIE

CITADEL STARS

SOUTHERN ICE
COMPANY

4400 — PHONE — 4400

SATISFACTION



CITADEL AND CAROLINA AT ORANGEBURG, NOVEMBER 1, 1928

COMPLIMENTS

RICHARDSON'S

AND

KEYSTONE

Engineering Company

SALMONS - CLEMENT
COMPANY

INCORPORATED

ENGINEERS AND
CONTRACTORS

—
DREDGING,

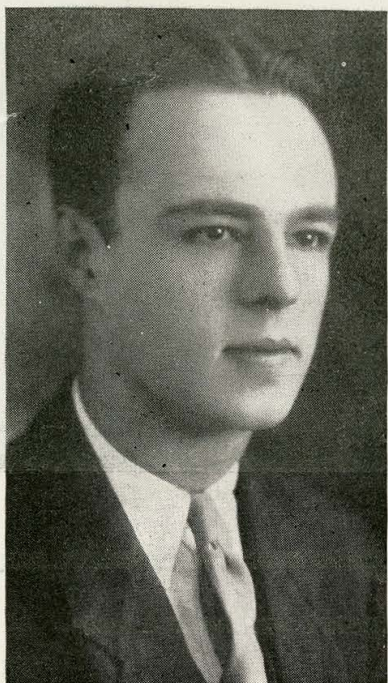
LAND RECLAMATION

—
CANALS, DOCKS, PIERS,

FOUNDATION BRIDGES

—
9 STATE STREET

CITADEL ALUMNI ASSOCIATION



J. M. ROBERTSON
Treasurer



M. A. PEARLSTINE
President



GEO. KILPATRICK
Secretary

AFTER THE GAME

RIDDOCK'S

FAMOUS
OR
FOOD

316 KING STREET

Charleston, S. C.

J. H. C. PERRY HARRY M. GRIMBALL

PERRY - GRIMBALL

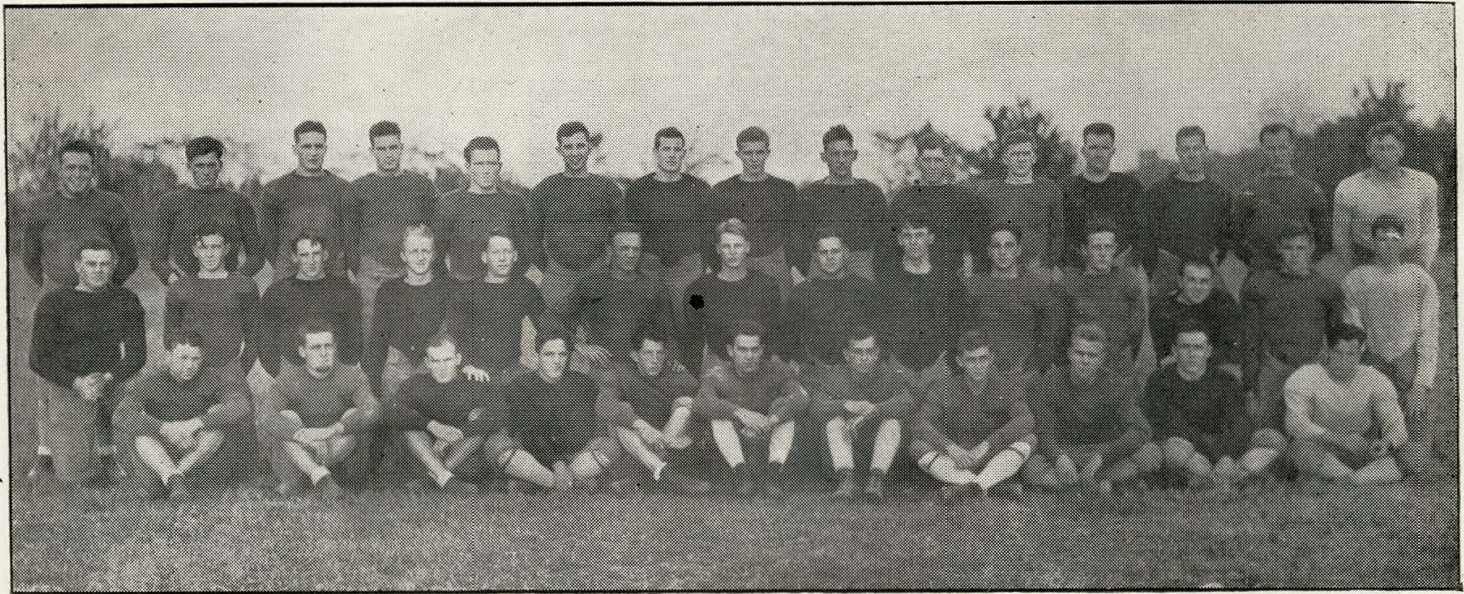
50 MARKET STREET

GENERAL INSURANCE

96

TELEPHONE

96



CITADEL 1928 FOOTBALL SQUAD

CITADEL VARSITY STATISTIC—1928

NAME	POS.	NO.	AGE	WT.	YRS. ON TEAM
King, (Captain)	E	73	20	185	2
Morgan	T	62	18	179	1
Oglesby	G	56	21	165	0
Parrott	B	69	18	130	0
Roberts	G	72	20	186	1
Ryan	E	50	20	155	0
Scoville	G	41	19	164	0
Skelton	C	61L	20	198	1
Stackhouse	T	8	20	165	2
Vandivier	T	19	20	160	2
Watson	E	1	19	161	0
Weeks	B	58	23	155	2
Wideman	T	51	19	197	2
Millard	E	64	20	158	2
Wilson	8	52	18	150	0
Dukes	G	53L	18	174	0
Carter	E	26	19	154	1
Flowers	C	15	19	168	0
Breese	E	56L	20	155	1
Adams, J. C.	G	21	20	190	0
Appleby	B	68	19	147	0
Atkinson	E	11	20	148	1
Bristow	G	66	20	158	1
Brown	E	60	19	162	0
Brasington	B	68	19	157	1
Cantrell	C	53	18	160	0
Carlisle	E	62	18	165	0
Carroll	T	12	18	179	0
Cothran	C	59	20	164	2
Clark	E	26	19	151	0
Dargan	E	14	18	158	0
Duval	B	55	20	142	2
Epps	G	61	21	153	2
Gray	B	54	18	150	0
Hobbs	B	65	18	158	0
Howie	B	57	20	157	2
Jackson, E. L.	B	73	19	150	0
Johnson	T	71	20	176	0

CLEMSON VARSITY STATISTICS—1928

NAME	POS.	NO.	AGE	WT.	YRS. ON TEAM
O. K. Pressley (Capt.)	C	75	21	182	3
Guy Davis	G	62	24	177	3
Bob Swofford	T	63	19	202	2
Crip Fleming	E	64	21	154	1
Bob McCarley	B	65	21	168	2
O. D. Padgett	B	66	22	168	2
J. H. Yarborough	T	67	21	172	2
Zag Mouledous	E	68	22	162	2
Pluto Davis	B	69	21	189	2
Jake Wray	E	70	21	167	2
Clarence Gunnells	G	71	20	196	2
Kit Hane	B	72	20	169	2
Fatty Hall	G	73	21	231	3
Jim Cook	C	74	21	167	1
Henry Asbill	E	76	21	152	2
Jimmy Dyess	T	77	29	171	1
Goat McMillan	B	78	22	154	2
Lewis Pitts	B	80	20	163	2
Bob Jones	E	81	20	175	1
Raeford McMillan	B	82	21	140	2
Dick Magill	T	84	24	175	2
Foggy Woodruff	E	85	20	174	1
Red Price	G	86	19	197	1
John Justus	B	88	21	151	1
Moon Snowden	G	89	20	171	2
Joe Collins	T	90	23	183	1
Eddie Mulherin	B	92	21	146	1
Homer Solomon	T	93	22	173	1
Jim Gassaway	G	95	20	182	2
Joe Brown	C	96	20	169	1

COMPLIMENTS
OF
LELAND MOORE PAINT & OIL COMPANY
PAINT MANUFACTURERS
CHARLESTON, S. C.

REGIMENTAL SPONSOR



MISS FRANCES MITCHELL

CHARLESTON PHOTO ENGRAVING COMPANY

PHONE
707

145 MEETING STREET

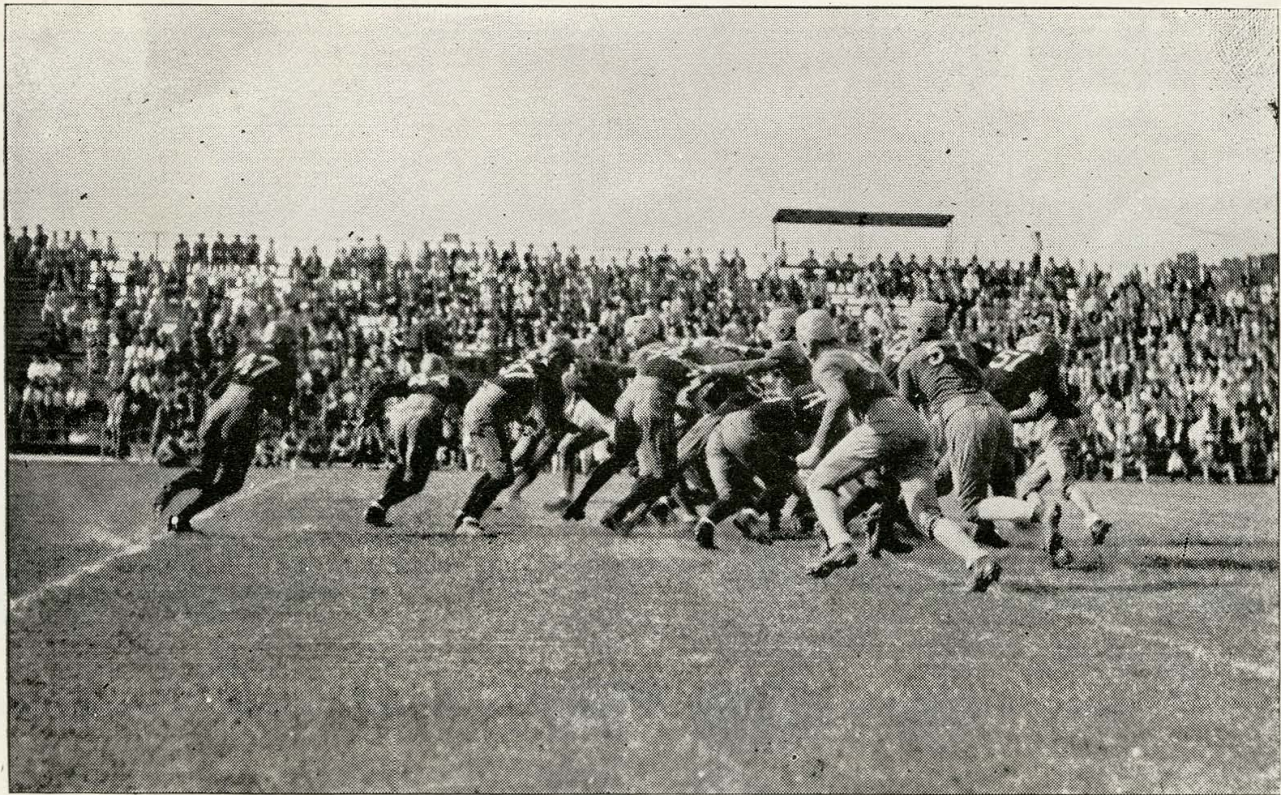
PHONE
707

CHARLESTON, S. C.

DESIGNERS

ILLUSTRATORS

ENGRAVERS



CITADEL AND NEWBERRY—OCTOBER 13, 1928

ELECTRIC SUPPLY CO.

159-161 Meeting Street.

**“Everything Electrical”
and Radiolas**

Armature Winding Phone 205

**SOUTH CAROLINA
RADIO SHOP**

379 KING STREET

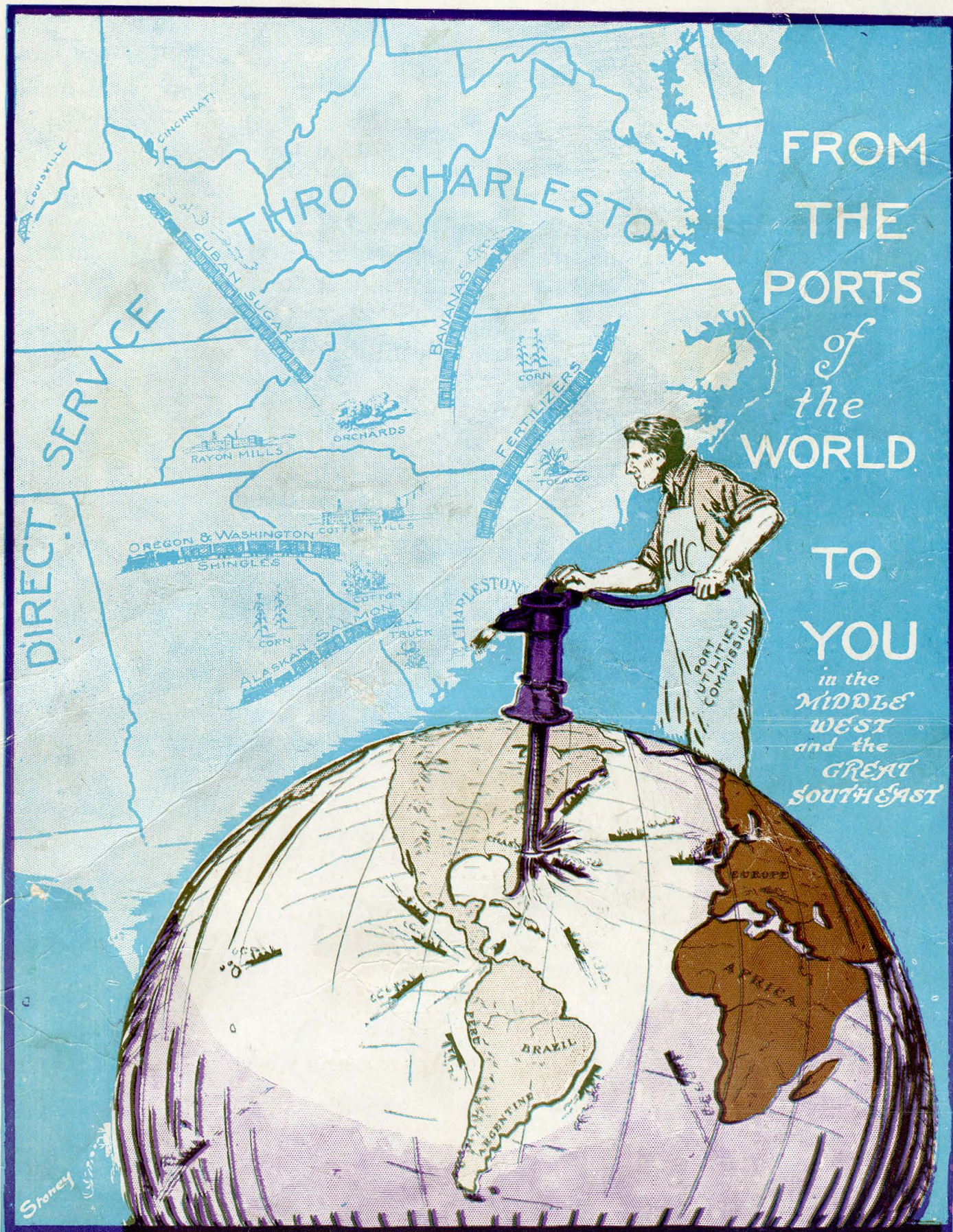
CHARLESTON, S. C.

CLEMSON - CITADEL GAMES

1909—Citadel 0; Clemson 17	1919—Citadel 0; Clemson 33
1910—Citadel 0; Clemson 32	1920—Citadel 0; Clemson 35
1911—Citadel 0; Clemson 18	1921—Citadel 7; Clemson 7
1912—Citadel 14; Clemson 52	1922—Citadel 0; Clemson 18
1913—Citadel 3; Clemson 7	1923—No game
1914—Citadel 0; Clemson 14	1924—Citadel 20; Clemson 0
1915—No game (State champions)	1925—Citadel 0; Clemson 7
1916—Citadel 3; Clemson 0 (State champs)	1926—Citadel 15; Clemson 6
1917—Citadel 0; Clemson 20	1927—Citadel 0; Clemson 13
1918—Citadel 0; Clemson 7	1928—? ? ? ? ? ? ? ?

PENALTIES

1.	Offside, Both Sides.....	No Penalty
2.	Offside	5 Yards
3.	Holding, by Defensive Side.....	5 Yards
4.	Running into Kicker.....	5 Yards
5.	Starting Forward, Before Ball is in Play.....	5 Yards
6.	Interference with Opponent, Before Ball is in Play.....	5 Yards
7.	Attempt to Draw Opponents Offside.....	5 Yards
8.	More than one Incompleted Pass During the same Series of 4 Downs.....	5 Yards and loss of Down
9.	Feint to Snap Ball.....	5 Yards
10.	Crawling	5 Yards
11.	Unfair Play not Specifically Covered in Rules.....	5 Yards
12.	Taking Out Time More than 4 Times a Half.....	5 Yards
13.	Substitute Failing to Report.....	5 Yards
14.	Taking More than Two Steps After Fair Catch.....	5 Yards
15.	Player Out of Bounds.....	5 Yards
16.	Holding by Side in Possession of Ball.....	15 Yards
17.	Interference by Side Making Forward Pass..	15 Yds. and loss of Down
18.	Pushing, Pulling, Interlocked Interference.....	15 Yards
19.	Roughing Kicker	15 Yards
20.	Running into Opponent Illegally.....	15 Yards
21.	Intentional Throwing of Forward Pass to Ground.....	15 Yards
22.	Tripping, Tackling Out of Bounds.....	15 Yards
23.	Hurdling	15 Yards
24.	Unsportsmanlike Conduct	15 Yards
25.	Substitute Communicating Before First Play.....	15 Yards
26.	Man Going on Field Without Permission.....	15 Yards
27.	Leaving Field During One-Minute Intermission.....	15 Yards
28.	Interference With Fair Catch.....	15 Yards
29.	Coaching From Sidelines.....	15 Yards
30.	Piling Up	15 Yards
31.	Clipping	25 Yards
32.	Delay in Starting Game or Second Half.....	25 Yards
33.	Incomplete Pass	Loss of Down
34.	Forward Pass Out of Bounds.....	Loss of Down
35.	Recovery of Backward Pass Out of Bounds.....	Loss of Down
36.	Forward Pass Touched by Ineligible Player.....	Loss of Ball
37.	Illegal Use of Hands or Arms on Kick.....	Loss of Ball
38.	Offside Player Touching or Recovering Ball.....	Loss of Ball
39.	Kicking Loose Ball.....	Loss of Ball
40.	Batting Ball	Loss of Ball
41.	Slugging.....	Half the Distance to Goal and Disqualification
42.	Illegal Return to Game.....	Half the Distance to Goal and Disqualification
43.	Foul Within One-Yard Line or Behind the Goal.....	Half the Distance to Goal and Disqualification
44.	Foul by Defense on Try for Point.....	Point Allowed



DIRECT

SERVICE

THRO CHARLESTON

FROM THE PORTS of the WORLD

TO YOU in the MIDDLE WEST and the GREAT SOUTHEAST

Stoney

LOUISVILLE
CINCINNATI
CUBAN SUGAR
BANANAS
FERTILIZERS
CORN
ORCHARDS
RAYON MILLS
OREGON & WASHINGTON COTTON MILLS
SHINGLES
ALASKA SALMON
TRUCK
CHARLESTON
EUROPE
AFRICA
BRAZIL
ARGENTINE