

# FOOTBALL PROGRAM



Price  
25c

THE CITADEL

ARCHIVES AND MUSEUM

CITADEL vs. CAROLINA  
OCT. 29, 1931

**ADVERTISERS IN THIS PROGRAM HAVE  
MADE THIS PUBLICATION POSSIBLE.**

**OUT OF A SENSE OF APPRECIATION, WE ASK  
THAT FRIENDS AND SUPPORTERS OF CAROLINA  
AND HER FOOTBALL TEAM, SHOW THEM EVERY  
POSSIBLE CONSIDERATION.**

---

## **University of South Carolina**

**COLUMBIA, S. C.**

**Courses leading to A. B., B. S. B. S. in Pharmacy, CE, EE LLB, A. M. and  
PH D Degrees**

**DEPARTMENTS OF THE UNIVERSITY—**

**COLLEGE OF ARTS AND SCIENCES  
SCHOOL OF EDUCATION  
SCHOOL OF COMMERCE  
SCHOOL OF JOURNALISM  
SCHOOL OF ENGINEERING  
SCHOOL OF PHARMACY  
GRADUATE SCHOOL  
LAW SCHOOL  
SUMMER SCHOOL**

**PRESIDENT L. T. BAKER**

OFFICIAL

Souvenir Program

OF THE

CITADEL-CAROLINA

FOOTBALL GAME



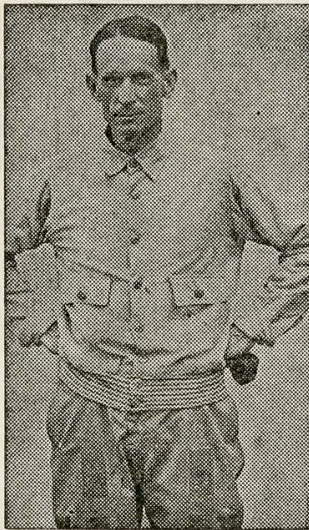
*October 29, 1931*

ORANGEBURG COUNTY FAIR, ORANGEBURG, S. C.

# Eat Best Maid Sandwiches

## **Mrs. Shealy's**

### *Eat 'em up Carolina!*



**BILLY LAVAL,**  
Carolina

### *The Coaches*

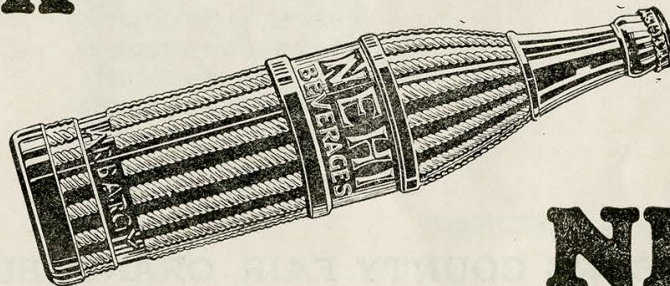
**JOHNNY FLOYD**

Citadel

Graduate of Vanderbilt and a pupil of Dan McGulin, whose style of play is employed at The Citadel. Was Captain of Vanderbilt football team his senior year. Came to The Citadel from Auburn, where he had coached for several years. This is his second clash with the Gamecocks.

## **DRINK**

**ALL  
POPULAR  
FLAVORS**



## **NEHI**

*Watch Carolina Putt The Game On Ice*

CITY ICE IS SURE, PURE, SAFE

1721 Main St.

**City Ice Co.**  
"THERE IS NO SUBSTITUTE FOR ICE."

Phone 3151

---

*The Captains*



**CAPTAIN BLOUNT**  
Carolina



**CAPT. WHITTINGTON**  
Citadel

---

**LORICK AND LOWRANCE, Inc.**

DISTRIBUTORS FOR

**REACH, WRIGHT AND DITSON ATHLETIC EQUIPMENT**

**WE WISH TO ANNOUNCE THAT**

**MR. EDWIN ZOBLE** is now managing our Sporting Goods Department, and can give you expert advice about all angles of Sport.

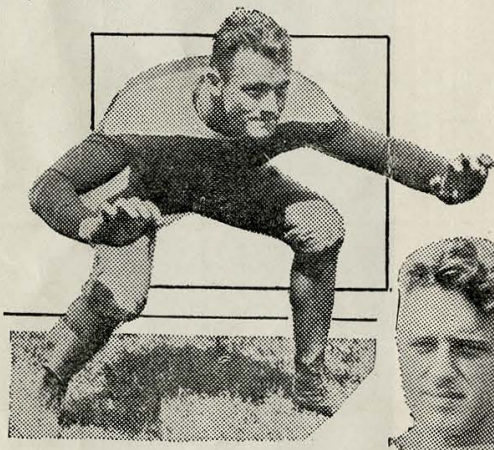
Send us your orders for Football, Basketball, Tennis, Golf, Hunting, Fishing. Mail orders will receive the same attention we would give you.

1527-1529 MAIN STREET

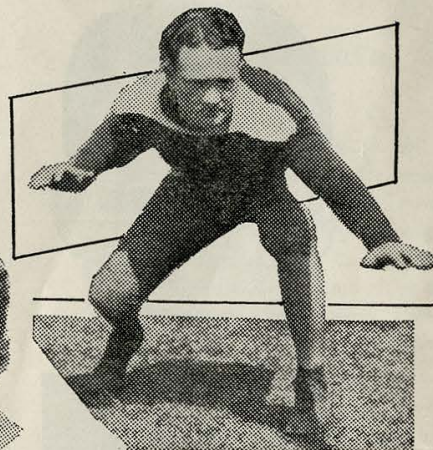
COLUMBIA, SOUTH CAROLINA

Compliments of  
**Columbia Athletic Club**

**BULLDOGS**



HOLLAND  
-TACKLE-



KIRBY  
-TACKLE



WILLARD  
-END-

CURB SERVICE

PROMPT DELIVERY

**BURNETT'S  
DRUG STORE**

Corner Main and College Streets

Headquarters For  
**CAROLINA STUDENTS**

PHONES 3191-3192

**CAPITOL CAFE  
IDEAL WAFFLE SHOP**

1210 Main Street

1728 Main Street

Serving Columbia Over Quarter of a Century

**OUR PLATE LUNCH  
AT 35c**

Represents the Finest Value in Columbia



## Jefferson Hotel

Robert T. Rosemond, Mgr.

COLUMBIA, S. C.

"Radios in Every Room"



SPALDING  
SCORES  
AGAIN . . .

with Athletic Equipment that is both authentic and correct. Over half a century's experience has served as a background for Spalding's recognized leadership in sports.

*A. S. Spalding & Bros.*

74 Broad St., N. W.

Atlanta

Georgia

# Good Printing & Binding

An Organization capable of supplying your every demand for the better class of Books, Catalogs, Folders, Leaflets, Letterheads, Forms, etc., *We Want Your Work*

The State Company  
Columbia, S. C.

# MARSHALL-TATUM CO.

If you think of entering a **SUIT**, con-  
sult us, we are **Clothing**  
**Attorneys**

CURB SERVICE

DELIVERY SERVICE

# CAPITAL DRUG CO.

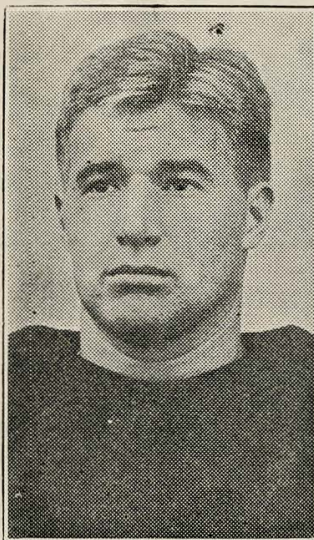
PHONE 22101

**SODA - LUNCH - DRUGS**  
**SUNDRIES**

1213 GERVAIS ST.

COLUMBIA, S. C.

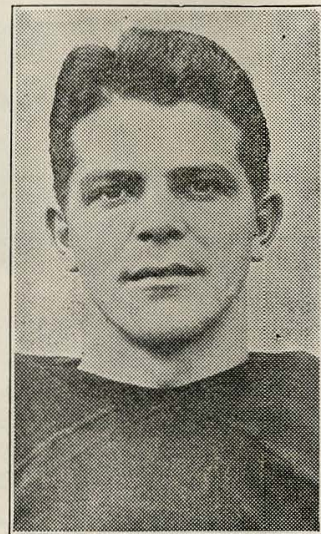
## GAMECOCKS



HAJEK



CLARY



HAMBRIGHT

# "SARGEANT"

PHOTO CO.

EVERYTHING IN PHOTOGRAPHY

Portraits, Commercial, Groups,  
Kodak Finishing

1528 MAIN ST.

PHONE 6607

# Imperial Hotel

"In the Heart of the City"

Rates \$1.50 and Up

COLUMBIA, S. C.



FOR SORE MUSCLES OR ATHLETES FOOT

USE

# McKesson's Soretone

AT ALL DRUG STORES

---

THERE IS ONLY ONE

## **ORANGE CRUSH**

IN CRINKLY BOTTLES ONLY

BOTTLED ONLY BY

**ORANGE CRUSH BOTTLING CO.**

PHONE 6970

COLUMBIA, S. C.

---

GIFTS OF THE BETTER KIND FOR EVERY OCCASION

JEWELERS

# **SYLVAN BROS.**

JEWELERS

1500 MAIN STREET

COLUMBIA, S. C.

PHONE 6045

DIAMONDS - WATCHES - STERLING SILVER - ART GOODS

A Large Assortment of Prize Cups and Frat Pins

OFFICIAL MAKERS OF CLASS RINGS

One Price, Marked in Plain Figures

Mail Orders Invited

# Dixie Laundry and Dry Cleaning Co.

NEW METHOD

QUALITY AND SERVICE

SPECIAL SERVICE TO STUDENTS

---

## GAMECOCKS



HUGHEY



FREEMAN



ADAIR

---

## Moffatt B. DuPre Co.

—WHOLESALE—

Fruits, Produce, Candies and  
Coffee Roasters

COLD STORAGE

Office Phone 6412      Warehouse Phones 4391-4392

“COLUMBIA MAID COFFEE”  
Maid in Columbia

Compliments of

## REAMER-DENT ICE & FUEL COMPANY

COLUMBIA, S. C.

C. Y. REAMER  
President

W. S. REAMER, Jr.  
Vice-Pres.-Sect.-Treas.

Phone 4311

# SHANDON DRUG STORE

The Store of Courtesy—Quality—Service

After the Game Drive Out and Have a Real Drink  
at a Real Drug Store

## SHANDON DRUG STORE

Henry H. Dorn

2801 Divine Street

Phones 4361-4362

# COLUMBIA PETROLEUM CO.

SHELL GASOLINE  
AND  
QUAKER STATE MOTOR OILS

## HOW THEY STAND

**WHAT CAROLINA HAS  
DONE THIS YEAR**

Carolina	7	Duke	0
Carolina	13	Ga. Tech	25
Carolina	12	L. S. U.	19
Carolina	21	Clemson	0
Carolina	—	Citadel	—

CAROLINA		CITADEL
SCORE	YEAR	SCORE
47	1905	0
12	1907	0
11	1908	5
11	1909	5
0	1910	0
0	1911	0
27	1912	13
42	1913	6
7	1914	3
0	1915	20
2	1916	0
20	1917	0
0	1918	14
7	1919	6
7	1920	0
13	1921	0
13	1922	0
12	1923	3
14	1924	6
30	1925	12
9	1926	12
6	1927	0
0	1928	0
27	1929	14
13	1930	0

**WHAT CITADEL HAS  
DONE THIS YEAR**

Citadel	0	Mercer	26
Citadel	12	Erskine	6
Citadel	13	V. M. I.	13
Citadel	6	Clemson	0
Citadel	6	Stetson	0
Citadel	—	Carolina	—

NOTE—No game in 1906.

## MAXWELL BROS. & QUINN

FURNITURE

1722-24 MAIN STREET

## FOREMOST ICE CREAM

A PRODUCT OF

RICHLAND DAIRIES

1812 Main Street

Phones 5134-5135



*"Your story in  
Pictures leaves  
nothing untold"*

**Carolina Engraving Co**  
Columbia, S. C.  
*1113½ Jaylor st Phone 5766*

**"Quality"**

*Mabenicht-McDougall Co.*  
"EXCLUSIVELY"  
**SPORTING GOODS**  
*1631 Main St. Columbia, S. C.*

**"Service"**

# Evans Motor Co.

DIAL 8103

THEN COUNT THE MINUTES

DISTRIBUTOR

General Tires, Vesta Batteries, Pennzoil, Standard Motor  
and Ethyl Gas.

# Football's Answer

By Grantland Rice

Written for Southern Football Programs

They reform me each new season  
As they point to each new fault.  
And their hands are turned against me  
As they crowd me to the vault.  
But amid the growing clamor,  
They still know around the clan,  
I'm the soul of college spirit  
And the maker of a man.

O, I know I'm far from perfect  
When the autumn leaves turn red,  
When the tackle's neck is furrowed  
By the half-back's heavy tread;  
But you hear them still admitting  
As they put me on the pan,  
"He's the soul of college spirit,  
And the maker of a man."

Perhaps I'm overfeatured  
In the headline's stirring plea.  
Perhaps I'm more important  
Than a mere game ought to be;  
But with all the sins they speak of,  
And the list is quite a span,  
I'm the soul of college spirit  
And the maker of a man.

Copyright, 1930, by the American Publishing Co.

---

**THE STATE COMPANY**  
**Printing Commercial Stationery Binding**  
COLUMBIA, S. C.

---

## GUESS THE SCORE BEFORE THE GAME STARTS

Teams	1st	2nd	3rd	4th	Total
CAROLINA "GAMECOCKS"	.....	.....	.....	.....	.....
.....	.....	.....	.....	.....	.....

## FINAL SCORE

CAROLINA "GAMECOCKS"	.....	.....	.....	.....	.....
.....	.....	.....	.....	.....	.....

Value of Scoring Points—Touchdown, 6; Goal, 1; Field Goal, 3; Safety, 2.

# Citadel Statistics

Name	Wt.	Pos.	Jersey No.
H. M. Whittington .....	156	Quarter .....	1
L. H. Jennings .....	155	Halfback .....	2
W. E. Mitchell .....	160	Center .....	3
C. H. Quarterman .....	155	Halfback .....	4
C. O. McCraw .....	165	Guard .....	5
J. P. Crosby .....	165	Guard .....	6
J. B. League .....	170	Halfback .....	7
L. H. Stern .....	170	Guard .....	8
E. T. Watts .....	170	Guard .....	9
H. L. King .....	170	End .....	10
E. W. McIntosh .....	180	Fullback .....	11
C. O. Hobbs .....	180	Tackle .....	12
L. G. Eskridge .....	180	End .....	13
L. E. Kirby .....	175	End .....	15
T. E. Boneta .....	185	Halfback .....	16
L. G. Drafts .....	193	Tackle .....	17
F. J. Suhrstedt .....	190	End .....	18
T. M. Metz .....	175	Fullback .....	19
C. J. Plyler .....	180	Fullback .....	21
C. R. Willard .....	185	End .....	22
C. R. Holland .....	180	Tackle .....	23
J. M. Ogilvie .....	186	Tackle .....	27
J. M. Palm .....	193	Center .....	28
J. E. Barton .....	195	Center .....	29
D. N. Rivers .....	306	Tackle .....	30
B. B. Gilbert .....	155	Quarter .....	47



# Carolina Statistics

No.	Name	Position	Weight	Class	Home
20	Stroud, Roy	End	176	Sophomore	Chester, S. C.
21	Turner, Roy	Halfback	156	Sophomore	Chester, S. C.
22	Fleming, Aster	Halfback	163	Junior	Spartanburg, S. C.
23	Clary, Earl	Halfback	165	Sophomore	Gaffney, S. C.
24	Kerpec, Louis	End	176	Sophomore	Elgin, Ill.
25	Blount, Miles	Fullback	171	Senior	Mullins, S. C.
26	Gilmore, Bill	Center	162	Junior	Columbia, S. C.
27	King, Cooley	Back	165	Junior	Williston, S. C.
28	Barrentine, Raleigh	Fullback	168	Sophomore	Ojus, Fla.
29	Robbins, Bob	Halfback	177	Sophomore	Davidson, N. C.
30	Laval, Buddy	End	174	Senior	Columbia, S. C.
31	Correll, A.	Center	182	Senior	York, S. C.
32	Willard, Henry	End	176	Sophomore	Spartanburg, S. C.
33	Hambright, Fred	Halfback	177	Sophomore	Clover, S. C.
34	Shinn, Dick	Quarterback	185	Sophomore	Athens, Tex.
35	Bostick, Frank	End	173	Senior	Marion, S. C.
36	Wolf, Grayson	Quarterback	166	Sophomore	Charleston, S. C.
37	Hughey, Curran	Guard	185	Senior	Columbia, S. C.
38	Hicks, N. B.	Fullback	184	Senior	Florence, S. C.
39	Raby, Noland	End	198	Sophomore	Macon, Ga.
40	Correll, E.	End	191	Junior	York, S. C.
41	Craig, Tom	Tackle	185	Sophomore	Pickens, S. C.
42	Brantley, Tom	Fullback	190	Junior	Orangeburg, S. C.
43	Fortson, Nelson	Guard	189	Sophomore	Asheville, N. C.
44	Freeman, Harry	Guard	202	Junior	Dacula, Ga.
45	Shinn, Joe	Center	205	Sophomore	Athens, Tex.
46	Adair, Bryant	Tackle	190	Senior	Columbia, S. C.
47	DeVaughan, Redding	Tackle	181	Senior	Montazuma, Ga.
48	Hajek, Chuck	Center	202	Sophomore	Cicero, Ill.
49	Johnson, Joe	Tackle	205	Sophomore	Spartanburg, S. C.
50	Meers, Dave	Tackle	205	Sophomore	Athens, Tex.
52	Moorehead, Buddy	Guard	204	Sophomore	Memphis, Tenn.
54	McManus, Henry	Tackle	209	Sophomore	Lancaster, S. C.

# Here they come

## PROBABLE LINE-UP FOR CAROLINA

Left End .....	Raby (39)
Left Tackle .....	Adair (46)
Left Guard .....	Hughey (37)
Center .....	Hajek (48)
Right Guard .....	Freeman (44)
Right Tackle .....	Meers (50)
Right End .....	Laval (30)
Quarterback .....	Dick Shinn (34)
Lefthalf .....	Hambright (33)
Righthalf .....	Clary (23)
Fullback .....	(Capt.) Blount (25)

Referee: A. R. Hutchens, (Perdue); Umpire:  
Jim Perry, (Sewanee).



In the thrill  
when you're smokin'  
back speed be sure  
better tasting Chester

Smoke **Chester**  
*They Say*



# HATS OFF TO 'EM!



thrilling moments  
 smoking with half-  
 sure it's a milder,  
 Chesterfield.

## PROBABLE LINE UP FOR CITADEL

---

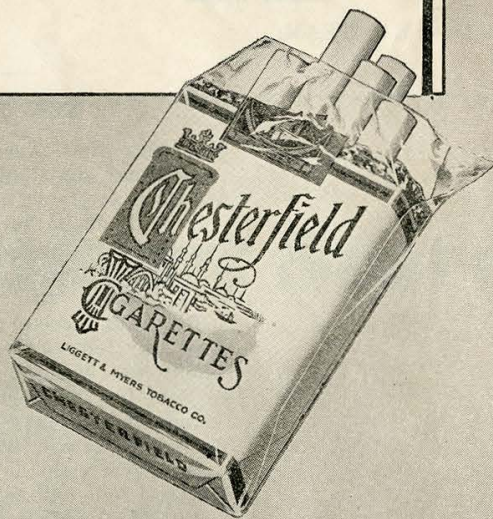
Left End .....	Willard (22)
Left Tackle .....	Holland (23)
Left Guard .....	Watts (9)
Center .....	Mitchell (3)
Right Guard .....	McCraw (5)
Right Tackle .....	Hobbs (12)
Right End .....	King (10)
Quarterback . (Capt.)	Whittington (1)
Lefthalf .....	Jennings (2)
Righthalf .....	League (7)
Fullback .....	McIntosh (11)

Field Judge: Everett Strupper, (Ga. Tech).  
 Head Linesman: Rip Major, (Auburn).

# Chesterfield

*Satisfy*

THEM ALL DAY LONG



# CITADEL SONGS AND YELLS

## ALMA MATER

On the shores of South Carolina,  
Proudly rears its head.  
All hail to Thee our Alma Mater;  
Conquer and prevail!  
Loyal sons will ever love thee,  
Honor and Obey,  
All hail to thee our Alma Mater,  
Citadel, all hail.

C - C - C  
I - I - I  
T - T - T  
A - A - A  
D - D - D  
E - E - E  
L - L - L

Citadel, Citadel, Citadel,  
Fight! Citadel, Fight!

## RAMBLE

Citadel had a Bull Dog with short and grizzly hair,  
Carolina had a Game Cock, now wouldn't that make  
a pair?  
And when they get together, there's bound to be a  
scrap;  
Just watch that Citadel Bull Dog wipe the Game  
Cock off the map.  
They rambled, they rambled.  
They rambled all around, in and out of town,  
Oh, they rambled, they rambled,  
They rambled 'till the Bull Dog cut him down.

## TEAM YELL

TE-A-M—YEA—TEAM.

## CITADEL HERE'S TO YOU

Citadel, here's to you,  
Citadel, you're true blue,  
You're the best old place to go;  
A darn good place we know  
And you bet, we'll fight for you,  
Citadel, eat 'em up,  
Citadel, beat 'em up.  
For we'll ride ride him on the rail,  
For we're from The Citadel.

## SKYROCKET YELL

..... (whistle) BOOM—RAY—TEAM

## BLUE AND WHITE

Blue and White, White and Blue,  
Citadel, Citadel, here's to you!  
Hurrah-rah! Hurrah-ray!  
Who will win this game today?  
Citadel! Citadel! Citadel!

## BULL DOG GROWL

Bull Dogs! Bull Dogs! Bull Dogs,  
Gr-r-r-r! Gr-r-r-r-r-r-r!  
Gr-r-r-r-r-r-r-r-r-r-r!  
Citadel! Citadel, Citadel!

## BULL DOG YELL

Rah, Rah, Rah, Rah,  
Rah, Rah, Rah, Rah!  
Citadel, Citadel, Citadel!

## NEW CITADEL SONG

We praise thee, The Citadel,  
Long may you stand  
A beacon so strong and true  
To guide our fatherland;  
The school of the fairest blue  
And purest white,  
We'll put our trust in thee  
And fight for our dear Old Alma Mater.  
Here jolly fellows meet  
With one accord  
To fight for thy noble name  
And conquer every foe;  
We'll fight, to win thee fame  
And never yield  
'Til the battle will cease, and we  
Have won a glorious victory.



are as Tough as the Pigskin Game and  
as Popular as the Football Star

GOOD SHOES—:—LOW PRICES

**MERIT SHOE CO., INC.**  
1531 MAIN STREET

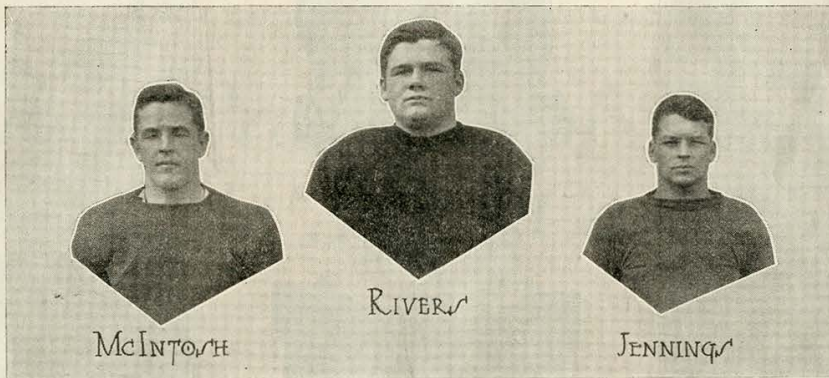
## GAMECOCK PRESSING CLUB

Suits and Overcoats Cleaned and  
Pressed For 60c—We Call For  
and Deliver

**RUN BY STUDENTS  
FOR STUDENTS**

Let Us Show You

### BULLDOGS



Compliments of

# Belk's Department Store

1501 Main Street  
COLUMBIA, S. C.

**BELK'S SELLS IT FOR LESS**

COMPLIMENTS  
OF

**MURTIASHAW'S**

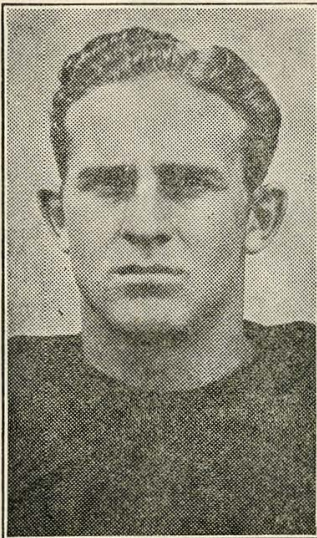
SHOE REPAIR SHOP

COLUMBIA, S. C.

**UNIVERSITY OF SOUTH  
CAROLINA GAMES**

September 26—Duke Univ. at Columbia.  
October 3—Georgia Tech at Atlanta, Ga.  
October 10—L. S. U. at Baton Rouge, La.  
October 22—Clemson at Columbia.  
October 29—Citadel at Orangeburg, S. C.  
November 7—Furman at Columbia.  
November 14—Florida at Tampa, Fla.  
November 21—N. C. State at Columbia.  
November 26—Auburn at Montgomery, Ala.

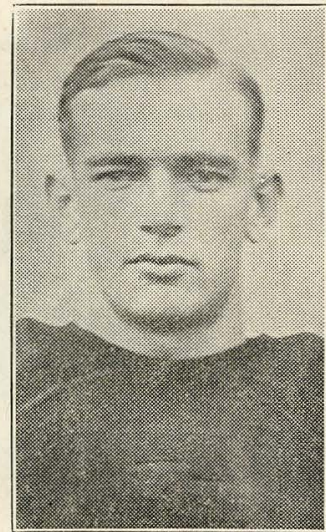
**GAMECOCKS**



TURNER



DeVAUGHN



WOLFE

**University Canteen**

NEW AND ENLARGED—TENEMENT—NO. 4—LEGARE

Here you will find almost everything the Student needs at lowest possible price—Soft drinks, ice cream, milk, sandwiches, candy, tobacco, stationery, school supplies, toilet articles, etc.

RUN BY STUDENTS—FOR STUDENTS—OWNED BY STUDENT BODY

Special rates on laundry and dry cleaning

Distributing Plant  
917 Main Street



PHONE 3171

# COLUMBIA DAIRIES

*Largest Producers of Grade A  
Milk in South Carolina*

*Their cows are strictly stall fed, not allowed to run on pasture where they would pick up weeds that would give the milk an off taste --- You can tell the difference . . . . . Their Ice Cream, "home made for home trade" is manufactured from pure milk and cream produced daily by these cows.*

# DeSoto Hotel

Headquarters for Out-of-Town Fans

1108 LADY STREET

Rates - \$1.50 Up

CHARLES E. NEW, Manager

COLUMBIA, SOUTH CAROLINA

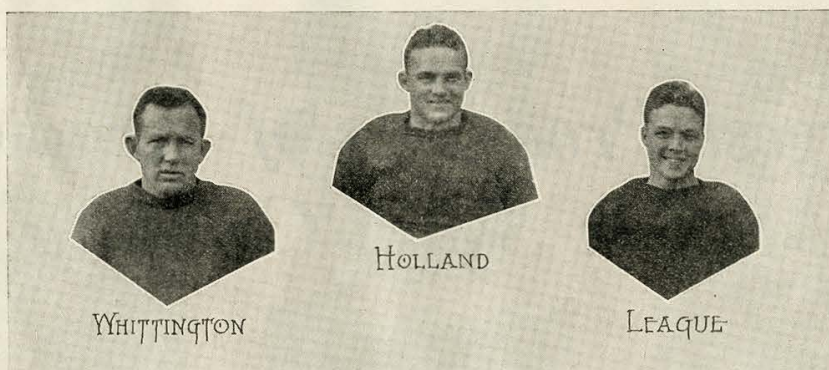
# Taylor's Bakery

INSIST ON  
TAYLOR'S BREAD

To meet football with a vim  
eat Taylor's Bread

PHONE 5501

## BULLDOGS



Compliments of

## M & M RECREATION

1216 MAIN STREET

POCKET BILLIARDS

Telephone 5109

Millwood Avenue

## SHANDON GREENHOUSES

Member Florist's Telegraph Delivery Association

Where Carolina Trades

Columbia, South Carolina

# CAROLINA SONGS AND YELLS

## Carolina, Rah! Rah!

Carolina, Rah, Rah!  
Carolina, Rah, Rah!  
Hoorah! Hoorah!  
South Carolina!

## Three Hi's

Hi! Hi! Hi!  
Team! Team! Team!

## Railroad Yell

S. C. Rah! Rah!  
S. C. Rah! Rah!  
Hoo-rah! Hoo-rah!  
South Carolina!  
(Repeat faster)

## Faculty Song

In heaven above  
Where all is love  
Old \_\_\_\_\_ won't be there;  
But down below  
Where all is woe  
Old \_\_\_\_\_ will be there.  
While we sing:  
Rah! Rah! Rah!  
For Carolina,  
Cheer for victory today,  
Ere the sun has sunk to rest  
In the cradle of the west,  
Oh, we'll proudly, proudly float our banners gay.  
Carolina!  
Carolina!  
Play the football,  
Hear thy sons call,  
We will rough-house  
Dear old \_\_\_\_\_  
Till they holler

Carolina

1-2-3-4

3-2-1-4

Who in the h\_\_\_\_\_ are we for?  
SOUTH CAROLINA!

## Sky Rocket

Siss-ss-ss!  
Boommoommoom!  
Yee-ee-ee!  
Carolina!  
Fight! Fight! Fight!

## Rickety-Rack

Rickety, Rickety, Rickety, Rack!  
Clickety, Clickety, Clickety, Clack!  
Garnet and Black!  
Garnet and Black!  
Boom Ray! Boom Ray!  
South Carolina!

## Long Cheer

Ray-ay-al! Rah! Rah!  
Ray-ay-al! Rah! Rah!  
Sis! Boom! Bah!  
Carolina! Carolina!  
Rah! Rah! Rah!

## A Health to Carolina

We hail thee, Carolina, and sing thy high praise  
With loyal devotion, remembering the days  
When proudly we sought thee, thy children to be;  
Here's a health, Carolina, forever to thee!

Since pilgrims of learning, we entered thy walls,  
And found dearest comrades in thy classic halls,  
We've honored and loved thee as sons faithfully;  
Here's a health, Carolina, forever to thee!

Fair shrine of high honor and truth, thou shalt still  
Blaze forth as a beacon, thy mission fulfill,  
And be crowned by all hearts in a new jubilee:  
Here's a health, Carolina, forever to thee!

—G. A. WAUCHOPE.

## Hail, Hail, Gamecocks Hail!

Hail, hail, Gamecocks hail  
We're behind you, Carolina,  
Break, break, break that line  
Hit 'em low and hit 'em hard as heck  
Fight, fight, take that ball  
Down the field across the gold line  
Garnet and Black will win,  
So Gamecocks, hail, hail, hail!

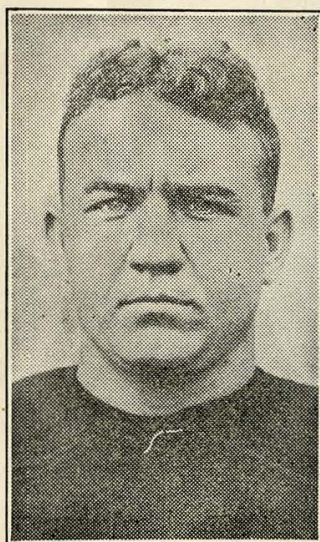
# MARMAC HOTEL

NEXT TO POSTOFFICE

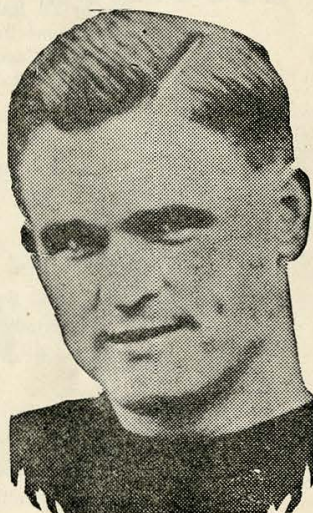
Reasonable Rates—Modern Conveniences

BEST DINING ROOM IN CITY

## GAMECOCKS



McMANUS



LAVAL



DICK SHINN

A Warm Welcome Always—Rest Rooms

PHONE 3207

## ROSE MARY TEA ROOM

Bring Your Date After the Game to the Best Place in Town

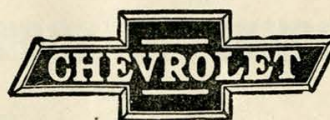
Open Daily 7:30 A. M. to 9:00 P. M.

1128 Hampton Ave.

Columbia, S. C.

"WHERE FRIENDS MEET"

THE MOST POPULAR CAR IN AMERICA



**Central Chevrolet Co.**

1230 Hampton Ave.



*We're with you Carolina :- Bring home that State Title*

# COLUMBIA CIGAR <sup>A</sup><sub>D</sub> TOBACCO CO.

1403 ASSEMBLY STREET

PHONE 2-3124

COLUMBIA, S. C.

## SUMMARY OF PENALTIES

### LOSS OF A DOWN

Forward pass from less than 5 yards back or second forward pass during same play.

Incomplete forward pass.

Second, third or fourth incomplete or illegal pass (also 5 yards).

Intentionally grounding pass (also 15 yards).

### LOSS OF FIVE YARDS

Request for time out more than three times during a half.

Illegal delay of game by either team.

Failure of substitute to report.

Violation of kick-off formation.

Position of players in a scrimmage.

Encroachment on neutral zone.

Center, guard or tackle may not drop back.

Player in motion less than 5 yards back.

Player out of bounds when scrimmage begins.

Illegal attempt by snapper-back to put ball in play.

Attempts to draw opponents off-side.

Interference with opponents before ball is put in play.

Guard or center running with, passing or kicking ball.

Second, third or fourth incomplete or illegal pass.

Player taking more than two steps after fair catch.

Player of kicking team ahead of restraining line.

Player of receiving team ahead of restraining line.

Illegal use of hands and arms by players of defensive team.

Running into the kicker.

Crawling by the runner.

Unfair play not provided for in the rules.

### LOSS OF FIFTEEN YARDS

Substitute communicating before ball is put in play.

Failure to come to stop in shift play.

Forward pass by player of defensive team.

Intentionally grounding pass to save loss of yardage.

Interference by passing team with player eligible for catch.

Interference with opportunity to make fair catch.

Throwing to ground the player who has made fair catch.

Helping the runner or interlocked interference.

Illegal use of hands and arms by players of offensive team.

Roughing the kicker.

Flagrant roughing of kicker (also disqualification).

Piling up.

Hurdling.

Tripping, tackling runner out of bounds, etc.

Running or diving into player obviously out of the play.

Unsportsmanlike conduct by players.

Flagrant unsportsmanlike conduct (also disqualification).

Side line coaching.

Persons allowed on field of play.

One representative in case of accident.

No walking on side lines.

Unsportsmanlike conduct by coaches, trainers, etc.

### LOSS OF TWENTY-FIVE YARDS

Illegal return to game.

Clipping.

Team not ready to play at schedule time.

### LOSS OF HALF DISTANCE TO GOAL LINE

Striking, kneeling, kicking, etc. (also disqualification).

Foul within 1-yard line.

Foul by defensive team behind its goal line.

### LOSS OF BALL

Second kick out of bounds at kick-off.

No player of kicker's team who has gone out of bounds at kick-off may attempt to recover ball.

Forward pass touched by ineligible player.

Interference by team which did not make pass.

No player of kicker's team who has gone out of bounds during a free kick may attempt to recover ball.

Illegal use of hands or arms when ball is free.

Batting ball towards opponents' goal.

Free ball kicked or kicked at.

### SUSPENSION

Illegal return to game.

Illegal equipment.

### DISQUALIFICATION

Striking, kneeling, kicking, etc. (also half distance to goal line).

Flagrant roughing of kicker (also 15 yards).

Flagrant unsportsmanlike conduct (also 15 yards).

### FORFEITURE OF GAME

Refusal of either team to play when ordered.

Fouls to delay game.

**IT'S FUN TO WIN**

in last year's old suit or overcoat. When it is cleaned by us you will think you have a new one

**DIAL 8156**

**The Carolina Dry Cleaning Co.**

1608 Barnwell Street

Columbia, S. C.

Compliments of

**William R. Elliott, Jr.**

GENERAL AGENT

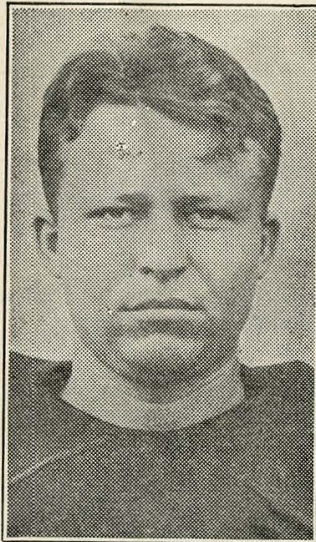
Minnesota Mutual Life Insurance Co.

Phone 7545

606 Carolina Life Building

The "Pigskin Toter's Friend"

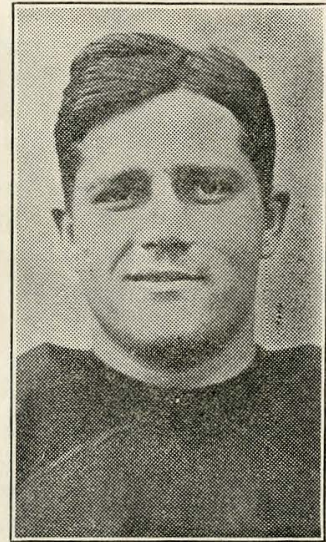
**GAMECOCKS**



JOE SHINN



A. CORRELL



MEERS

**Central Ice Cream and  
Candy Co.**

1005-7 Main Street

Phones 3170-3179

Home Owned by Home People

Dr. E. L. Wingfield, President  
Dr. W. E. Caughman, Vice-President  
Dr. W. H. Caughman, General Manager

**Wilse W. Martin**



HARNESS MAKER AND REPAIRER  
We Repair All Kinds of Leather Goods

Dealers in Luggage and Golf Bags

Auto Top Making and Repairing

HIGH CLASS SHOE REPAIRER

Phone 6820  
Top Shop Phone 5423

1116-18 Hampton St.  
706 Lady St.



The **EASY WAY**  
to take things  
easy . . . *the*  
*pause that*  
*refreshes . .*

**Tune in** on our radio program.  
Famous sports celebrities talk...An  
all-string 31-piece dance orchestra.  
... Every Wednesday night...  
[ / ]

BW-108  
OVER *Nine Million* A DAY  
IT HAD TO BE GOOD  
TO GET WHERE IT IS

Columbia  
Coca-Cola  
Bottling Co.

# UNIVERSITY DRUG STORE

CURB SERVICE

Parker Pens and Pencils a Specialty

Results of Games by Quarters

Special Attention to University Students

CAMPUS DELIVERY SERVICE

1204 Green Street

Phones 4331-4332

---

## Toms Toasted Peanuts

AND

## DELICIOUS CANDY BARS

---

"ALWAYS FRESH"

# Columbia Laundry

**SPECIAL RATES TO STUDENTS**

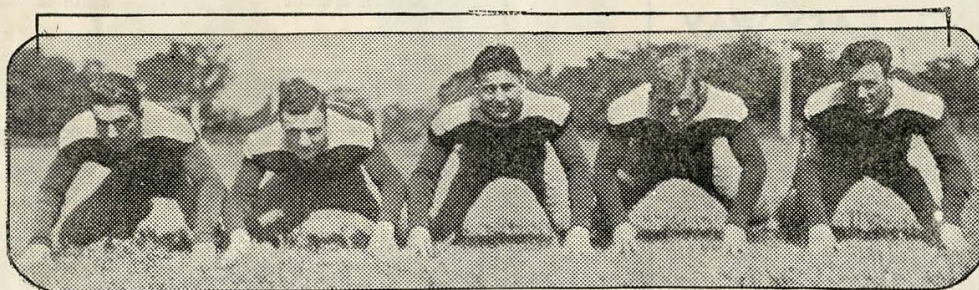
Leave Your Laundry at the  
Canteen by 12 o'clock each day

# GIBSON'S DRUG STORES

1801 Gervais Street — — 1738 Main Street  
2052 Main Street

**Your Drug Stores**

## BULLDOGS



HOBSBS   "   STERN   "   WATTS   "   MCGRAW   "   CROSBY

"Flowers That Last"

**Eison**  
INC

Florists  
and  
Decorators  
ESTABLISHED 1890

1442 Main Street

Phone, Day—4620

Phone, Night—4621

**"SAY IT WITH FLOWERS"**

# W. C. Peeler Co.

Wholesale

**CIGARS—CANDY—TOBACCO**

CANADA DRY GINGER ALE

JERSEYS FOR CAROLINA FOOTBALL TEAMS FROM

# O'Shea Knitting Mills

—MAKERS—

Athletic Knitted Wear For Every Sport

2414-24 North Sacramento Ave

CHICAGO

## Carolina Tailoring Co.

C. D. SEXTON, Manager

1420 Main Street

Telephone 22892

### A CAROLINA INSTITUTION

CLOTHES FOR COLLEGE MEN

\$22.50 and up

We feature the genuine Biltmore hand woven home spun woolens, made in Asheville

TROY T. STOKES, Campus Representative

Curb Service

Motorcycle Delivery

## FIVE POINTS DRUG STORE

Plenty Parking Space

PHONE 2-2129

(As Close to You as Your Phone)

### SODA—DRUGS—SUNDRIES

2003 Divine Street

Columbia, S. C.

CALVIN BRUTON, Mgr.

(Come by After the Game)

# Dunbar Funeral Home

FUNERAL DIRECTORS

AMBULANCE SERVICE

ANYWHERE—ANYTIME

PHONE 9998

1527 GERVAIS STREET

COLUMBIA, S. C.

Wilson Motor Co., Inc.



PHONE 4611

Curb Service "Snappy" Motorcycle Delivery

**WALES GARDEN  
DRUG STORE**

AT FIVE POINTS

PHONE 8163

**HOLLINGSWORTH CANDY**

DRUGS—SODAS—HOT SANDWICHES

**BULLDOGS**

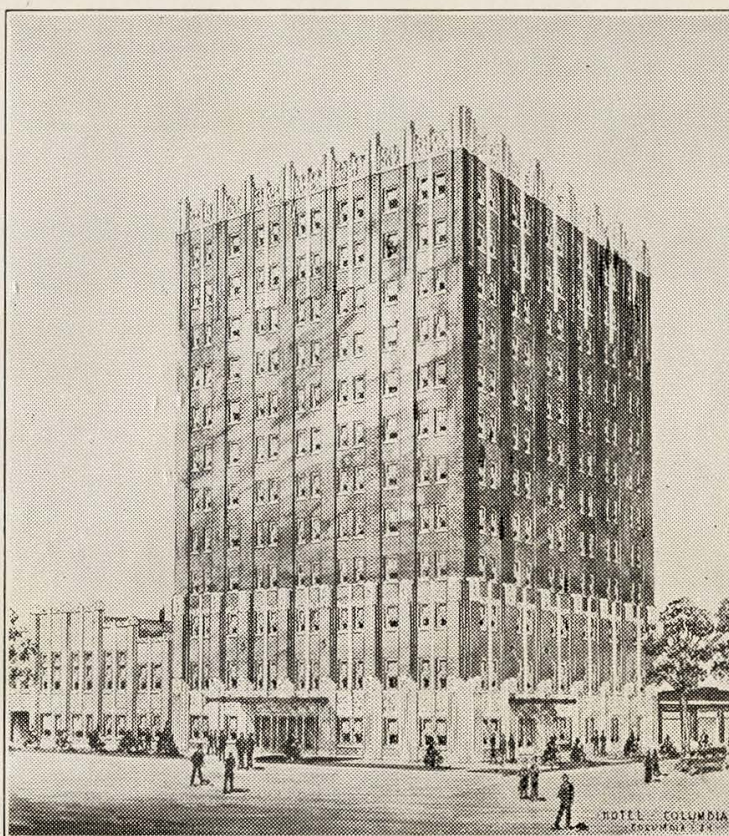


**S. B. McMaster, Inc.**

**ATHLETIC OUTFITTERS**

Corner of Sumter and Hampton

**A TRUE SPORT BUYS FIRST AT HOME**



# **HOTEL COLUMBIA**

200 Rooms, Each With Bath

*Dining Room*

*Coffee Shoppe*

● **A "SHIFT PLAY"**  
***you ought to try***

Millions of folks like you are switching to Camels—the fine cigarettes *kept* fine in the Humidor Pack. Try the cool, fresh, throat-friendly mildness of Camels for just one day, then leave them — if you can.



Smoke a **FRESH** cigarette



**CAMELS**

**Mild...NO CIGARETTY AFTER-TASTE**

© 1931, R. J. Reynolds Tobacco Company, Winston-Salem, N. C.

2004.17