

Swift Memorial Institute,

1900-1901.

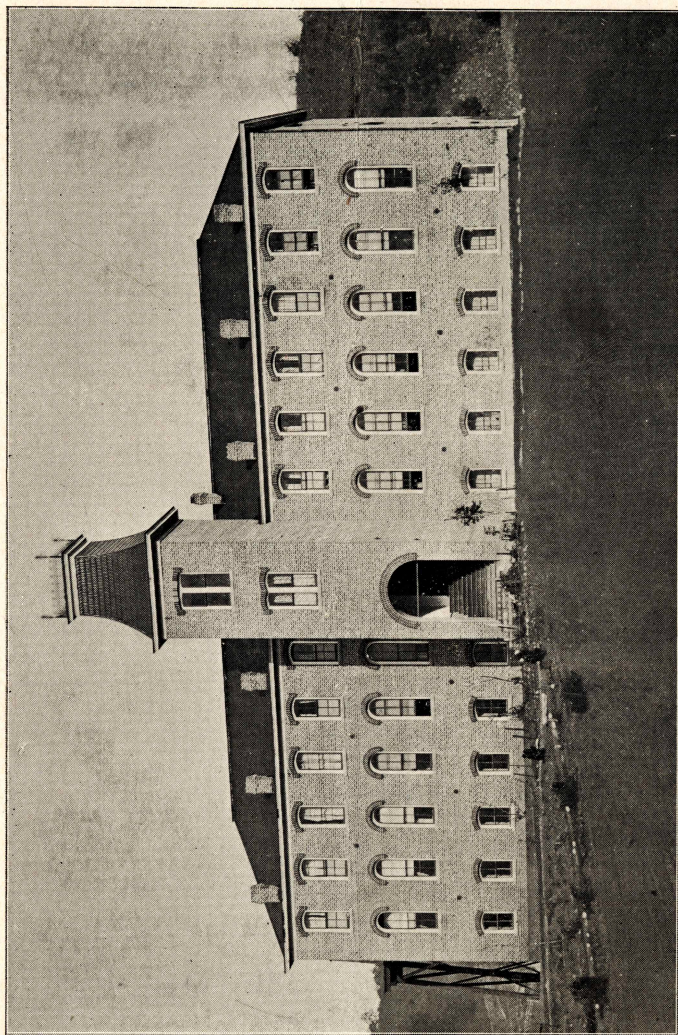
ROGERSVILLE, TENNESSEE.



SPECIAL COLLECTIONS

THE UNIVERSITY
OF TENNESSEE LIBRARY
KNOXVILLE

LC
2852
.R63S92
1900-1901



CATALOGUE

—*OF*

Swift Memorial Institute,

FOR 1900-1901.

ROGERSVILLE, TENNESSEE.

ROGERSVILLE, TENN.,
PRINTED AT THE HERALD JOB OFFICE,
1901.



LC.
2852
R63592
1900-1901

FACULTY.

REV. W. H. FRANKLIN, A. M.,

PRINCIPAL.

MR. JNO. R. BAKER, A. B.,

NORMAL DEPARTMENT.

MISS ANNIE L. ENOS, B. S.,

GRAMMAR DEPARTMENT.

MISS DELIA G. HOLMES,

INTERMEDIATE DEPARTMENT AND ASSISTANT MATRON.

MISS EMILY P. JONES,

PRIMARY DEPARTMENT.

MRS. LAURA C. FRANKLIN,

MATRON AND ASSISTANT PRINCIPAL.

MISS HENRIETTA V. MABRY,

MUSIC TEACHER.

MISS LOTTIE M. ENOS,

SEWING DEPARTMENT AND SUB PRIMARY.

ADVISORY BOARD.

Rev. H. T. McClelland, D. D., - Pittsburg, Pennsylvania,

Rev. E. P. Cowan, D. D., - Pittsburg, Pennsylvania,

Rev. J. J. Beacom, D. D., - Pittsburg, Pennsylvania.

PRESBYTERIAL AND SYNODICAL COMMITTEE.

Rev. J. E. Alexander, D. D., - Greeneville, Tennessee,

Rev. C. A. Duncan, D. D., - Knoxville, Tennessee,

Rev. S. S. Wilson, D. D., - Maryville, Tennessee,

Rev. W. H. Franklin, A. M., - Rogersville, Tennessee.

SWIFT MEMORIAL INSTITUTE.

Named in honor and memory of Rev. E. E. Swift, for many years the esteemed President of the Board of Missions for Freedmen, is located at Rogersville, Tennessee. Rogersville is the county seat of Hawkins county. It is a beautiful and healthful little town, situated in a rich and lovely valley, at the terminus of the Tennessee & Ohio Railway, a branch leaving the Southern Railway at Rogersville Junction. It is the commercial centre of an extensive region of country noted for its marble, coal, timber, mineral springs, and valuable products of many kinds. It has an exceptional population, and every inducement to make it the very best location possible.

The institution was begun in 1883, under the most unfavorable circumstances, and has been continued ever since by the self-denying and indefatigable labors of the Principal. Necessity has been the father and mother of the school, a necessity which strongly and irresistibly elicited the interest and engaged the attention of the Presbytery of Holston, the Synod of Tennessee and Freedmen's Board.

The institution has steadily grown in interest and influence, and has already done much for Christian education. The welfare of the church, the cause of good morals and Christian education, and the great good already accomplished in transforming, qualifying and elevating the impoverished and unfortunate colored race, justify and plead the imperative need of the institution.

OBJECT.

The object of the Institute may be more clearly and fully set forth as follows:

1. To educate the colored youth in religion and the arts and sciences.
2. To prepare them for domestic duties and the practical business of life.
3. To prepare efficient teachers for common schools.
4. To furnish Christian workers for the various requirements of the church.

The salvation and elevation of the Afro-American race rest upon the character, the intelligence and the culture of its women. We therefore realize that the Christian boarding school for the education of our girls is the deepest, the greatest and the most urgent need of the race. It is our aim

Allegheny Pa

and the aim of the friends of the institution, to make this the best school possible for the higher and thorough training of the girls. We shall endeavor to make it a model school in every respect. We invite the patronage of all young ladies and of all parents who desire to give their girls an ample, useful and Christian education. Applications should be made at once as our accommodations for the present are limited.

GROUNDS.

The grounds are most suitable and desirable. They are elevated and centrally located, affording a magnificent view of the town and surrounding country. They consist of about five acres.

ACCOMMODATIONS.

A handsome, commodious and suitable building has been recently erected and furnished for the young ladies at a cost of about \$20,000. It is three stories high, heated by steam, supplied with water, and affording convenience for all necessary purposes. Besides rooms for classes, chapel, etc., it provides rooms for the accommodation of fifty students. The dormitory rooms are neat, elegant and desirable. It is a fitting testimonial to the memory of Dr. E. E. Swift, by this devoted friend and the Freedmen's Board, and a living monument of the interest which they feel in their Master's work. The erection of this building enables us to offer comfortable quarters and excellent advantages to young ladies who are earnestly desiring a Christian education and are willing to work hard, to study hard and deny themselves to obtain it.

BOARDING DEPARTMENT.

The boarding department is conducted on the plan of a Christian home. Students are under the control and watchful care of a matron and teachers who aim not only to train them to be systematic and orderly in domestic work, but also to cultivate in them the principles of neatness and of true manhood and womanhood. Each student is expected to assist in doing the work in the dormitory or any other work which may be assigned.

Students will not be permitted to leave the dormitory without permission from the Principal, Matron or teachers in charge. The rules of the dormitory and of the school are made for the best interest of the students, and must be willingly and cheerfully obeyed.

EXPENSES.

Expenses of each student for board, light, fuel and washing, \$48.00 for term of eight months. Day tuition, 50c. and

\$1.00 per month. Students must pay all breakage and damage. Students must pay part of tuition in advance.

UNIFORM DRESS.

In the interest of decency, economy and neatness, we have thought it best to adopt a uniform dress for the students of Swift. On all public and special occasions, the girls will be expected to wear blue serge dresses, and, if possible, caps.

The boys will be expected to wear caps with the initials of the institution on them.

SUGGESTIONS.

Students who contemplate coming to Swift next year will please take notice of the following suggestions:

1. To provide themselves with warm, dark dresses and under skirts for school and every day wear.
2. Lined skirt waists.
3. Large, dark aprons for domestic work; and
4. Overshoes for out door wear.

Be careful to mark all clothing with owner's name.

THE BROWNLOW-CONNELL LIBRARY.

Hon. W. P. Brownlow, M. C., of this district, secured through Hon. Connell \$100, to buy books to lend to indigent students. We have put the books, so purchased, in a library to be known as the Brownlow-Connell Library of Text Books. We hereby express our gratitude and the gratitude of the people to them, and trust that their laudable efforts will be supplemented by gifts from other sources.

NEW LIBRARY.

In the closing days of the school year, the cheering and delightful intelligence comes through Mrs. E. E. Swift and Mrs. James H. Hensley, Secretary, that the *Woman's Missionary Society* of the *Central Presbyterian Church, of Denver, Col.*, had decided to establish at *Swift Memorial Institute* the *Julia Swift Blaine Memorial Library*. There has been a standing need of just such a Library as we know that the friends of Mrs. Blaine will establish, and that intelligence will be thrice welcome to our students and patrons. The Society will have our continued gratitude.

IMPROVEMENTS.

Through the kind efforts of students and teachers, we have put in nineteen electric lights. They add much to the appearance of things and are enjoyed by all.

The old tank and tower have been removed from the west end of the building. A new tank and tower have been

put in the rear. The tower contains two rooms much needed for various purposes.

The desks in the chapel have been displaced by comfortable chairs, and the lower departments have been furnished with desks. For this great and necessary improvement we are indebted to the ladies of the Freedmen's Board. They and the Board have our sincere gratitude.

Other changes and improvements have been made which add much to the convenience, comfort and attraction of things.

In keeping with our past history we are hoping and expecting to announce other greatly needed improvements. Our boarding departments for boys and girls were overcrowded this year.

Our new and excellent site for the boys' dormitory and the removal of the Primary Department out of the building have contributed much the welfare of the school. The building site and the application of students call louder than ever for a suitable building. It is a great, urgent and pressing need. The school must seriously suffer in doing its work until it gets such a building. Who will send us the command: "Arise and build."

RULES.

We have thought it necessary to record the following specific rules:

1. All boarding students must come prepared to purchase their books on entering school. No day student will be admitted without buying their books beforehand.
2. Boarding students will be allowed to receive baskets or boxes from home or friends Christmas, but at no other time.
3. All students must do honest and faithful work and conduct themselves with proper decorum. Any one failing to do so, will only remain at the discretion of the Faculty.
4. Day students must pay five cents a month as an incidental fee. Any one too poor to pay incidental fee will be admitted without it.

COURSE OF STUDY.

The course of study is practical, progressive, and sufficiently comprehensive to meet the requirement of the times. It is admirably chosen, well arranged and adapted to accomplish the object designed. We feel confident that it will satisfy all reasonable demands.

Our teachers' course has been selected with care. It contains those branches which are indispensable to a well equipped teacher. It is therefore arranged to accommodate those who desire to make teaching a profession and to take their place with the best.

MUSIC.

Vocal music taught free in all departments. A competent teacher will give instruction in instrumental music. Two lessons per week will be given each one. Each one will be required to practice one hour each day, also to read all works on music that are provided by the department.

The class will be called together at the end of each month for rehearsal. Talks will be given on music, etc. A prize will be awarded each year to the one that is most punctual in practice hours, lessons, best informed in musical literature, etc., and that has made the most advancement.

All persons entering this department will be charged \$12 per session of 8 months; \$1.50 to \$2 per month for use of music, instruments, lessons, etc.

For this department there is great and immediate need of musical instruments. An organ or piano will supply a real want and greatly add to the value and efficiency of the department.

SEWING DEPARTMENT.

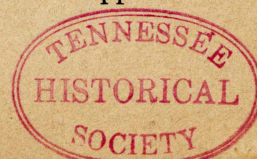
Plain sewing is taught to the boarding students free of charge. Day students and other persons desiring to learn plain sewing, dress-making and the systems taught, will be charged from fifty cents per month to two dollars per month. It is our purpose to secure an experienced and competent teacher for this department and to make more of it than hitherto. We shall need material such as thread, cloth, etc., and the financial help of our friends.

INDUSTRIAL DEPARTMENT.

In this department our students get a practical rather than theoretical one. They are taught to do by doing. The little that we are able to do for them makes useful and valuable their intellectual and Christian training. All of our students must do something—must work—and are graded on quality of the work performed. It is hoped that the friends of industrial education will help us to make more of this department. One of our mottoes is: "The worth and dignity of labor."

SPECIAL APPEAL FOR HELP.

Our force is not adequate to the real demands of the school. If we are to maintain and improve our industrial department and properly supervise and train our students in things most worthy, we must have two additional teachers. The need of them is almost absolute. They can be had for \$25 per month each. I kindly and earnestly appeal to some interested individual, church or society, to take the support



of these teachers. A great and good work will be done thereby.

LITERARY SOCIETIES.

There are two literary societies connected with the school; the N. Tomengela and the Louverture. The former is composed of young men, and the latter young ladies.

RELIGIOUS SOCIETIES.

The young People's Missionary Society, the Senior and Junior C. E., and the Loyal Temperance League exist and are in a flourishing condition. It is gratifying to see the students growing in spiritual power, and taking a more active part in their societies and all religious exercises. These societies are a great blessing to them, and to the homes and communities to which they return.

A Y. M. C. A. has been organized during the year.

The improved spiritual condition of the school is very gratifying to us. We have had no special revival, but a better and purer spiritual atmosphere has pervaded the school. And we have been greatly pleased to have one student after another coming to the Master. The religious instruction and training which they are receiving are working wonderful transformation in their character and lives. Three of them have committed and recited the catechism and received Bibles for the same.

RELIGIOUS SERVICE.

Preaching every Sabbath at the church. Prayer meeting every Wednesday night. The Institute prayer meeting every Thursday morning in connection with the opening of the school. Students are required to attend all the religious services.

SOMETHING OF WHAT WE ARE DOING.

It is only in recent years that we have decided to give certificate of graduation to those students completing our Grammar and Normal Courses. Since then, each year has closed with a constantly increasing number of graduates from these courses. We shall have two to finish the Normal Course this year. All are professed Christians. There are others still further advanced who are striving earnestly against great difficulties and through much self-denial to complete the higher course.

Last year our students supplied all the schools in this county, and many of them taught elsewhere. They maintained the high reputation which the school has sustained in sending out efficient and worthy teachers. The work which is done within the walls of Swift is by no means the measure

of the work which it is doing for Christ and humanity. Wherever her students go they carry a new spirit, a new energy and a new life which bless, transform and save. It is frequently said to us: "Your school is a blessing not only to the colored people, but to the entire community."

The Musical Department is deservedly popular under the efficient and excellent instructions of Miss Mabry. The class is the largest and best known to the institution.

OUR FRIENDS.

Through the kindness of the Freedmen's Board and friends we had a school term of seven months. We trust that through the improved financial condition of the Board and the liberality of our friends that we shall have a term of eight months the ensuing year.

We hereby express our gratitude and obligations to the societies and friends in Pennsylvania and elsewhere, who have so kindly and generously contributed to our work. Through the blessing of God and their loyalty, liberality and faithfulness, we have been enabled to reach the end of another pleasant and successful year. The good work of their societies—young and old—will receive a just recompense of reward.

Something is also due our conscientious and faithful teachers who have put their heart, soul, faith and self-sacrifice into their work, thinking little of worldly pleasure and of the loaves and fishes.

We also desire to return thanks to the Ladies' Missionary Societies of the Synod of Tennessee, for their encouragement and material interest in our work.

HOME ENCOURAGEMENT.

One of our leading merchants and citizens has offered a beautiful Bible to be competed for by the school in memorizing the Westminster Catechism.

PRINTING PRESS.

We kindly and gratefully acknowledge the donation of a printing press and type from one of our generous ministers.

We have made some use of it and hope to make a good deal more the ensuing year.

VISITORS.

We have had a number of visitors, but none more welcome and more enjoyed than the visits of Mrs. Flora D. Palmer, Gen'l Secretary of the Freedmen's Board, Pittsburg, Pa., and Prof. G. F. Richings, of Ashland, O.

Prof. Graybill, of the Synodical Female College, brought



over his Teachers' Class to inspect our work and building, April 1st.

Special thanks are due Mrs. Frances L. Swift and Mrs. Flora D. Palmer for supplying us with Bibles and Music books, suitable for devotional and chapel exercises. They were much needed and have done much to improve both.

ALUMNI.

The Alumni will have their Annual Social, Thursday, May 9th, from 4:30 p. m. to 6:30 p. m.; Miss Paralee Brice, President; Miss Maggie Netherland, Secretary.

The Annual Sermon will be delivered by Rev. S. A. Coile, D. D., Knoxville, Tenn., May 5th, at 10:30 a. m., and the Annual Address by Rev. Geo. R. Brabham, of Maryville, May 7th, at 7:30 p. m.

NEEDS OF THE INSTITUTION.

- 1 We need papers and books for the reading room, library, and text books.
- 2 Scholarships of \$45 each, a great need.
- 3 Apparatus for philosophical experiments.
- 4 Anything that will help indigent students.
- 5 A building which will cost at least \$10,000, this is an immediate and imperative need.
- 6 An endowment fund; endowment fund now, \$550.00.
- 7 Music books for the school.
- 8 Tableware and linen, bedding, etc.
- 9 Anything which can be used in boarding department.
- 10 A typewriter.

ADMITTANCE.

The doors of the institution stands wide open to welcome all who sustain a good moral character and desire an education. All applicants will be examined and assigned to the departments and class to which their studies entitle them. Prompt and willing obedience will be expected of every student. Incurable pupils will find no place or favor.

NEXT TERM.

The next term will begin October 1st, 1901, and will close May, 1902. A short vacation will be given during the holidays. We close the present term much pleased with the advancement of the students and the improved tone of the school. We note with pride the filling up of our more advanced classes by a superior type of students, and the gratifying results of better instruction. Next year we shall endeavor to strengthen our teaching force, to enlarge our work, and to do more efficient work in every department. Other improvements will be introduced when requirements of the school make them necessary.

GENERAL APPEAL.

Swift Memorial Institute represents what the great Bible-loving and educational cherishing Presbyterian Church is doing in the State of Tennessee, Eastern Virginia, Western North Carolina, for the higher education of the colored youth. The field is large, important and in great need of just such training and culture as the Presbyterian Church affords and without which our Master's Vineyard and people must be left uncultivated and uncared for. May we not expect that some of those into whose hands this catalogue may fall will consider our needs and claims, and aid us to build up an institution for Christian education. The condition of the Negro, his deep need, his great thirst for knowledge, his gratitude to his benefactors, his intimate and peculiar relations to the institutions of this country and the Kingdom of Christ, commend him most favorably and strongly to his friends in their charitable gifts.

The Institute is under the auspices of the Board of Missions for Freedmen and Holston Presbytery. Contributions can be sent to Rev. W. H. Franklin, Principal and Agent, or to the Board of Missions for Freedmen, Pittsburg, Pa.



COURSE OF STUDY.

PRIMARY DEPARTMENT.

FIRST YEAR.

Reading—Stickney's First Reader Spelling—From Reading Lessons,
and charts Arithmetic

Language

(ORAL LESSONS)

Bible Stories Form, Color, Etc.
Writing Charts Drawing Cards

SECOND YEAR.

Reading—Stickney's Second Spelling—American Word by Word
Reader Arithmetic—Oral Lessons
Bible—Selections from Gospel Drawing Cards
Writing—Eclectic Tracing Copy Language—Oral Reproductions
Book Science—Oral Lessons on Animals
Geography—Eclectic Oral Lessons.

INTERMEDIATE DEPARTMENT

FIRST YEAR

Reading—Stickney's Third Reader. Spelling—Word by Word
Bible—Catechism and Bible Reader. Arithmetic—Ray's Elementary
Fry's Geography—Eclectic Elementary. Language Lessons
Writing and Drawing—Vertical Science—Oral Lessons,
Book No. 1. Plants.

SECOND YEAR.

Reading—Stickney's Reader Spelling
Bible—Shorter Catechism Arithmetic—Wentworth's Element-
Fry's Geography ary. Grammar Lessons.
Writing and Drawing—Vertical Science—Hooker's Child Book of
Book No. 1. Nature

GRAMMAR DEPARTMENT.

FIRST YEAR.

Reading—Stickney's Fourth Spelling—Word by Word
Reader Arithmetic—Wentworth
Bible—Old Testament History Writing and Drawing—Eclectic
Geography—Fry's Book No. 3.
Grammar—Metcalf's Science—Cutters's Physiology and
Book No. 2. Hygiene.

SECOND YEAR.

Reading—Stickney's Fifth Spelling and Word Analysis
Reader Arithmetic—Lee's
Bible—New Testament History History—United States
Geography—Fry's History
Writing and Drawing—Vertical Geology and Science of Agricul-
Book No. 4. ture.

NORMAL DEPARTMENT

FIRST YEAR.

Reading—Kid's Elocution Mathematics—Fisher & Schwarz
Rhetoric and Composition— and Eclectic Book-Keeping
Williams Writing and Drawing—Eclectic
Physical Geography—Maury's Book No. 5.
History—Myers' General Science—Gray's Botany.
Bible—Books of the Bible.

SECOND YEAR.

English Literature—Shaw's Algebra—Fisher & Schwarz
Church Government Writing and drawing—Eclectic
Latin—Daniel's First Lessons Book No. 5.
Science—Gage's Natural Philosophy, English History—Montgomery

HIGH SCHOOL DEPARTMENT.

FIRST YEAR.

Latin, Cæsar—Grammar, Harkness'. Greek—(White's First Lessons)
Educational Reformers Chemistry
Mathematics—Wentworth's Geom- Civil Government—Peterson's
etry Theory and Practice of Teach-
Bible—Church History. ing—Page's.

SECOND YEAR.

Latin—Cicero, Harkness' Greek
Geology—Dana's Geology Mental Philosophy
History of Civilization Zoology
Confession of Faith Study of Missions

THIRD YEAR.

Virgil and Prose Composition Homer
Psychology Moral Philosophy
Astronomy Evidences of Christianity
Historical Geography
Vocal Music and Physical Training throughout the year.

TEACHERS' COURSE.

The Teachers' Course is designed to prepare teachers for their professional work. The latest and best methods will be taught. Special and thorough work will be done and required. A fine opportunity is afforded to all who desire to teach and make teaching a profession. This course pre-supposes that the student has completed the first year of the Grammar Department or its equivalent.

FIRST YEAR.

History of Tennessee Geology of Tennessee
Natural Philosophy Civil Government
Psychology, (Welch) Art of Study

SECOND YEAR.

Higher Arithmetic Industrial Education
Philosophy of Education Science of Agriculture
Educational Reformers Theory and Practice of Teaching

THIRD YEAR.

History of Education School Management
Lecture on Teaching Educational Theories
Higher Arithmetic
Music, Drawing, Vocal Training and Practical work throughout the year.

FIRST HONOR ROLL.

—o—

Miss Rosa Bradley.	Miss Emma Rogers.
Miss Rosa Warren.	Miss Nellie Bradford.
Miss Pearl Twitty.	Miss Della Leaper.
Miss Bertha Hannum.	Miss Bessie Watterson.
Miss Fannie Cooper.	Miss Sallie Lyons.
Miss Lucy Duff.	Miss Mary Keys.
Miss Lady Kate Cochraham.	Miss Cornelia Cochraham.
Miss Amy Y. Scott.	Miss Georgia Bradford.
Mr. J. W. Pennington.	Mr. Richard Rice.
Mr. W. F. Snapp.	Mr. U. G. Dougans.

REGISTER OF STUDENTS.

—o—
SUB-PRIMARY.

ROGERSVILLE, TENNESSEE.

Armstrong, Florence	Kinchelor, Emma
Armstrong, Harrington	Kyle, Lennie
Brown, Willie	Kyle, Carrie
Bradley, Willie	Kyle, Willie
Bradley, Hector	Kelly, Cassie
Carmichael, Fred	Kinchelor, Chestnut
Carmack, Herbert	Lyons, Hugh
Chestnut, Willie	Lyons, Robert
Chambers, Elizabeth	Lee, Roy
Charles, Gracie	Lee, Elsie
Chestnut, Lemmie	Lyons, Rosie
Chambers, Margaret	McKinney, M. Francis
Carr, Alice	Mitchel, Gale
Fain, Jennie	Pearson, Gale
Fuget, Nora	Pearson, John
Fuget, Ethel	Pearson, Robert
Fain, Archie	Richard, Henry
Fain, Clifton	Ross, Edward
Francico, Johnnie	Rogers, Maggie
Fulkerson, Tommie	Sensibaugh, Annie
Green, Roy	Sensibaugh, Horace
Green, Taylor	Shypes, Sallie
Green, Edward	Sypes, Ella
Gaines, Arthur	Shypes, Marsh
Gaines, R. Annie	Scott, B. Lue
Gray, Lillie	Starnes, Mary
Green, Nollie	Willis, B. Mary
Horton, Katie	Watterson, Francis
Horton, Annie	Wolfe, Jimmie
Howard, Brooks	Williams, Eldridge
Hale, Johnnie	Watterson, Ancrom
Jones, L. Annie	Watterson, Roy

SWIFT MEMORIAL INSTITUTE.

PRIMARY.--FIRST GRADE.

ROGERSVILLE, TENNESSEE.

Alexander, Luther	Irving, Hattie
Alexander, Edward	
Bradley, Harry	Irving, Georgie
Bradley, Ancrom	Kyle, John
Cain, Ethel	Lyons, James
Charles, Rosa	McKinney, Grace
Carmichael, Kate L.	Starnes, Fred
Cope, Matilda	Spears, George
Carmack, Willie	Sensibaugh, James
Carmack, James	Spears, Allie
Fleming, Cora, Knoxville,	Spears, Mollie
Green, John	Talmage, Watterson
Gaines, Mollie	Williams, Emma
	Wells, Annie
Heiskell, Willie	Wolfe, Sadie, Mossy Creek,

—6—
SECOND GRADE.

ROGERSVILLE, TENNESSEE.

Archie, Minnie	Kyle, Adlaide
Barnes, John	Kyle, Irwin
Bradley, George	Lea, Willie
Brice, Conelius	Lyons, Noricy
Cain, Diana	Lyons, Walter
Charles, Robert	Lyons, Willis
Cope, Andrew	Lyons, Berdie
Caldwell, Clinton	Lyons, Elsie
Delaney, Solomon	Lyons, Katie
Fuget, Mary	Morton, Juan Nita
Fuget, James	Miller, Luther
Fain, Charles	McKinney, Willie
Fain, Hugh	Payne, Eldridge
Green, Minnie	Russell, Charles
Hamblen, Joseph	Watterson, Sadie
Horton, Willie	Wolfe, Lloyd
Johnson, Frank	
Fleming, Nellie,	Knoxville, Tenn.

SWIFT MEMORIAL INSTITUTE.

INTERMEDIATE.--THIRD GRADE.

ROGERSVILLE, TENNESSEE.

Anderson, Florence	Kyle, Willie
Bradley, Rosa	Lyons, Irene
Brice, Nora	Lyons, Mary A.
Brice, Earnest	Lyons, Walter
Brice, Fred	Lyons, Elsie
Bradley, Jennie	Miller, Mollie
Cain, Maggie	McKinney, May
Fain, Eddie	Netherland, Jennie
Fugate, Tennie	Netherland, Nelson
Fulkerson, Samuel	Neal, Georgia
Fulkerson, Abitha	Ross, Robert
Green, Etta	Ross, Richard
Gunn, Martha	Richmond, Willie
Howard, Josie	Spears, Lawrence
Hale, Annie	Simpson, Sullivan
Jones, Anna M.	Watterson, Fannie
Kyle, Sue Mabel	Weems, Hattie
Kyle, Annie	Watterson, Mollie
Kyle, Fannie B.	Wolfe, John
Kyle, Hugh W.	
Wadkins, Ida	St. Clair, Tennessee.
Wadkins, Alfred	St. Clair, Tennessee.

—0—
FOURTH GRADE.

Armstrong, Anna M.	Rogersville, Tenn.
Bradley, Nannie	" "
Bradley, Maxie	Solitude, "
Carmichael, Laura	Rogersville, "
Carr, George	" "
Cochraham, Samuel	St. Clair, "
Edwards, Magnolia	Chattanooga, "
Francisco, Jessica	Rogersville, "
Fugate Tennie	" "
Johnson, Minnie	" "
Kyle, Belle	" "
Keys, Mary E.	Bristol, "
Leiper, Addie	Morristown, "
Russell, Effie	Atlanta, Ga.
Richie, Maud	Jonesville, Va.
Rogers, Emma	Rogersville, Tenn.
Sevier, Bonnie	Greeneville, Tenn.
Thompson, Mary	Knoxville, "
Turk, Della	Mossy Creek, "
Williams, Frank	" " "
Wolfe, Estella	Rogersville "
Wilson, Emma	Maryville, "
Wolfe, Ella	Rogersville, "
Wolfe, Bertha	" "

GRAMMAR DEPARTMENT.

FIRST YEAR.

Brice, Lemah	-	-	-	Rogersville, Tenn.
Bradford, Nellie	-	-	-	Dandridge, "
Bradford, Georgianna	-	-	-	" "
Chestnut, Annis	-	-	-	Rogersville, "
Duff, Lucy	-	-	-	Stickleysville, Va.
Dougans, Grant	-	-	-	Jacksonville, Fla.
Endarley, Jordan	-	-	-	Dandridge, Tenn.
Fenderson, Edward	-	-	-	Rogersville, "
Fulkerson, Frank	-	-	-	" "
Fain, Nolie	-	-	-	Dandridge, "
Inman, Shade	-	-	-	" "
Kite, Gertrude	-	-	-	Rogersville, "
Kyle, Mollie	-	-	-	" "
Lea, Mary	-	-	-	" "
Lea, Annis	-	-	-	" "
Miller, Julia	-	-	-	" "
Miller, James	-	-	-	Knoxville, Tenn.
McKinney, Alfred	-	-	-	Rogersville, "
Netherland, Nelson	-	-	-	Dandridge, "
Rice, Richard	-	-	-	Russellville, "
Redman, Flora	-	-	-	Dandridge, "
Smith, Lucy	-	-	-	Knoxville, "
Watterson, Samuel	-	-	-	Rogersville, "
Watterson, Edward	-	-	-	" "
Wadkins, Minerva	-	-	-	St Clair, "

SECOND YEAR.

Cooper, Fannie	-	-	-	Stony Point, Tenn.
Cochraham, Mary	-	-	-	St. Clair, "
Kite, Ollie	-	-	-	Rogersville, "
Lyons, Sarah	-	-	-	" "
Leeper, Della	-	-	-	Morristown, "
Lathrum, William	-	-	-	Hendersonville, N. C.
McGee, Hazel	-	-	-	Greeneville, Tenn.
Netherland, Bessie	-	-	-	Rogersville, "
Hodge, Willie	-	-	-	Mossy Creek, "
Ross, Katie	-	-	-	Rogersville, "
Ross, Laura	-	-	-	" "
Scott, Amy	-	-	-	Knoxville, "
Snapp, William	-	-	-	Dandridge, "
Sullivan, William	-	-	-	Hendersonville, N. C.
Watterson, Bessie	-	-	-	Rogersville, Tenn.

NORMAL DEPARTMENT.

FIRST YEAR.

Bradley, Rosa C.	-	-	-	Rogersville, Tenn.
Bradley, H. G.	-	-	-	Upper Clinch, "
Cleckley, Bertha O.	-	-	-	Orangeburg, S. C.
Cochraham, Lady Kate	-	-	-	St. Clair, Tenn.
Floyd, Myrtle H.	-	-	-	Rogersville, "
Green, India A.	-	-	-	Dalton, Ga.
Gammons, Walter L.	-	-	-	Dandridge, Tenn.
Hannum, Bertha L.	-	-	-	Maryville, "
McGhee, Adrian E.	-	-	-	Greeneville, "
Netherland, Anthony H.	-	-	-	Rogersville, "
Twitty, Pearl E.	-	-	-	Greeneville, "
Vance, Harriet J.	-	-	-	Stawberry Plains, "
Wolfe, George B.	-	-	-	Rogersville, "

SECOND YEAR.

Cochraham, Alfred F.	-	-	-	Rogersville Junc., Tenn.
Martin, James L.	-	-	-	Jonesville, Va.
Laffell, George A.	-	-	-	Sevierville, Tenn.
Warren, Rosa	-	-	-	Louisville, "

HIGH SCHOOL.

FIRST YEAR.

1 Pennington, J. W.	-	-	-	Greeneville, Tenn.
---------------------	---	---	---	--------------------

SECOND YEAR.

1 Williams, Ella	-	-	-	Knoxville, "
2 Watterson, Mary C.,	-	-	-	Rogersville, "

TEACHERS' COURSE.

FIRST YEAR.

1 Cochraham, Cornelia G..	-	-	-	Bull's Gap, Tenn.
2 Johnson, Melissa	-	-	-	Rogersville, "
3 Forgie, Sadie	-	-	-	" "
4 Brice, Paralee	-	-	-	" "

SUMMARY:

Primary,	-	-	-	-	140.
Intermediate,	-	-	-	-	66.
Grammar,	-	-	-	-	40.
Normal,	-	-	-	-	17.
High School,	-	-	-	-	3.
Teachers.	-	-	-	-	4.
Total	-	-	-	-	270.

NORMAL GRADUATES.

CLASS OF 1895.

Armstrong, Nannie	-	-	Rogersville, Tennessee.
Chance, Isaac	-	-	New Market, Tennessee.
Cochraham, Paralee	-	-	St. Clair, Tennessee.

CLASS OF 1896.

Flack, P. M.	-	-	Alexander, N. C.
Hall, Maggie	-	-	Maryville, Tennessee.
Hurse, Robert	-	-	" "
Lawrence, Leonora	-	-	Columbia, "

CLASS OF 1897.

Brice, J. Houston	-	-	Rogersville, "
Brice, James	-	-	" "
Brice, Paralee	-	-	" "
Cochraham, Lizzie	-	-	St. Clair, "
Kennedy, Mattie	-	-	Maryville, "
Snapp, R. A.	-	-	Dandridge, "

CLASS OF 1898.

Bradley, James	-	-	Rogersville, "
Eaton, Ada	-	-	Bean Station, "
Fain, Lida	-	-	Rogersville, "
Johnson, Melissa	-	-	" "
Miller, Robert C.	-	-	Washington, D. C.
Netherland, Maggie	-	-	Rogersville, Tenn.
Netherland, Lillie	-	-	" "
Ross, Arthur	-	-	" "
Sevier, Lectia	-	-	Greeneville, "
Watterson, Rachel	-	-	Stony Point, "
Watterson, Mary	-	-	Rogersville, "

CLASS OF 1899.

Bradley, Estella	-	-	New Market, "
Forgie, Sadie	-	-	Rogersville, "
Woodward, Lucy	-	-	Maryville, "
Warren, Octavia	-	-	Louisville, "

CLASS OF 1900.

Bradley, W. O.	-	-	Rogersville "
Ross, John	-	-	" "
Pennington, J. W.	-	-	Greeneville, "

CLASS OF 1901.

Martin, James	-	-	Jonesville, Va.
Warren, Rosa	-	-	Louisville, Tenn.

William Henderson Franklin - D. D. - from
Maryville College in 1901 - Has been
connected with Swift Memorial for 18 years
④ was the main instrument in its
upbuilding - small statue - dapper
④ emphatic - Born in Knoxville April
14 of 1852 - Preparatory education at
Knoxville public ④ private schools ④ later
graduated at Lane Theological
Seminary - Cincinnati - 1883 -
Then Maryville in 1901 - Has
been president of Swift ~~Memo~~ ~~Ch~~
Seminary for 18 years ④ at same
time pastor of St. Mark's
Presby ~~Ch~~ - First Afro-American
to graduate from Maryville College -

1870 taught school Hudsonville,
Marshall Co, Miss - 2 terms ④
made enough to build home ④ later
Maryville College - Graduated
in 1880 - B. A., A. M., ④
D. D. - Ordained minister
Union Presbytery, Synod of Tenn,
in 1883 -
