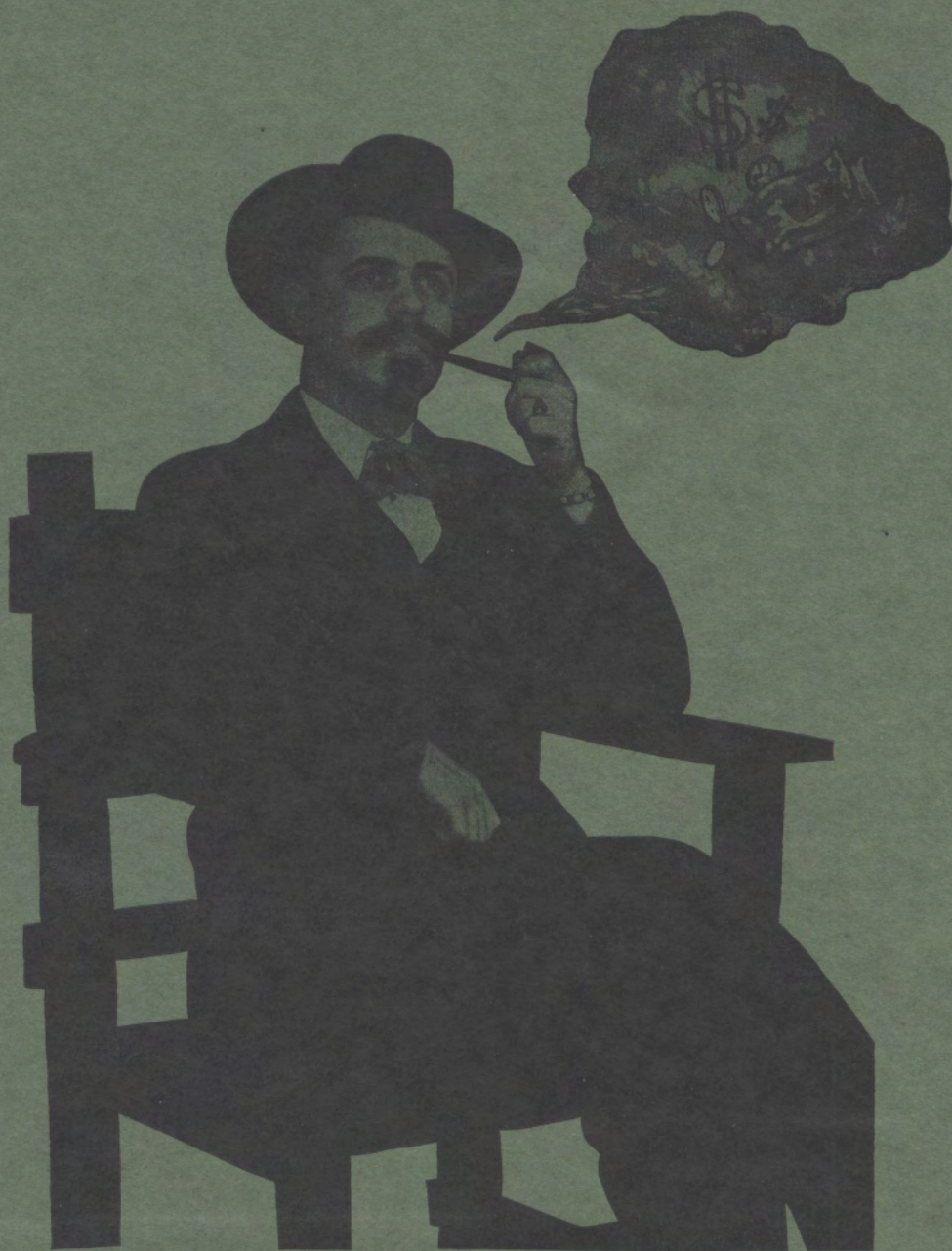




1934

OLDE CENTRE



CHARLES H. GARTRELL
Business Manager
Olde Centre 1934

Logan M. Cheek
B. O. T.

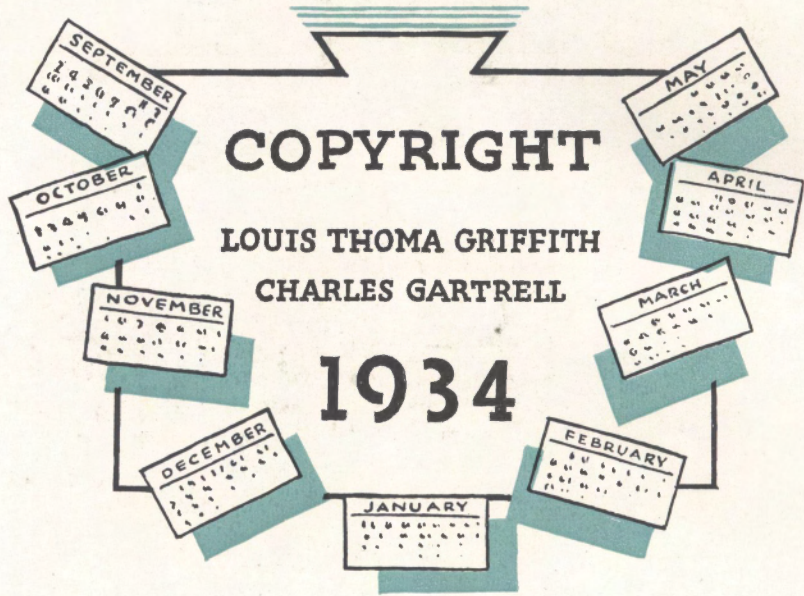


LOUIS T. GRIFFITH
Editor-in-Chief
Olde Centre 1934

OLDE CENTRE



1934



COPYRIGHT

**LOUIS THOMA GRIFFITH
CHARLES GARTRELL**

1934

SEPTEMBER
1 2 3 4 5 6 7 8 9 10 11 12 13 14 15 16 17 18 19 20 21 22 23 24 25 26 27 28 29 30

OCTOBER
1 2 3 4 5 6 7 8 9 10 11 12 13 14 15 16 17 18 19 20 21 22 23 24 25 26 27 28 29 30 31

NOVEMBER
1 2 3 4 5 6 7 8 9 10 11 12 13 14 15 16 17 18 19 20 21 22 23 24 25 26 27 28 29 30

DECEMBER
1 2 3 4 5 6 7 8 9 10 11 12 13 14 15 16 17 18 19 20 21 22 23 24 25 26 27 28 29 30 31

JANUARY
1 2 3 4 5 6 7 8 9 10 11 12 13 14 15 16 17 18 19 20 21 22 23 24 25 26 27 28 29 30 31

FEBRUARY
1 2 3 4 5 6 7 8 9 10 11 12 13 14 15 16 17 18 19 20 21 22 23 24 25 26 27 28

MARCH
1 2 3 4 5 6 7 8 9 10 11 12 13 14 15 16 17 18 19 20 21 22 23 24 25 26 27 28 29 30 31

APRIL
1 2 3 4 5 6 7 8 9 10 11 12 13 14 15 16 17 18 19 20 21 22 23 24 25 26 27 28 29 30

MAY
1 2 3 4 5 6 7 8 9 10 11 12 13 14 15 16 17 18 19 20 21 22 23 24 25 26 27 28 29 30 31

OLDE CENTRE

PUBLISHED ANNUALLY
BY THE JUNIOR CLASS OF
CENTRE COLLEGE
DANVILLE, KENTUCKY



1934

FOREWORD

In compiling this, the 1934 Olde Centre Year Book, the Editors feel an abrupt departure has been made from the general trend to be found in year books. We have employed a scheme of balance which we hope will be pleasing both in appearance and originality. The idea of two themes on each page throughout the entire book has been attempted for the purpose of portraying the relation between the student body and the various other activities of the school year. In endeavoring to place each activity in its proper place in our scheme of the ten school months calendar plan, we perhaps have erred in some instances. On the other hand, it has been almost impossible to place some activities in any certain month. We can say only that we have tried to do our best and we hope we have achieved a pleasing unity.



CONTENTS

THE CALENDAR SCHOOL YEAR

September

October

November

December

January

February

March

April

May

June





MRS. JAY HARLAN
Head of Centre College Music Department

Because we appreciate her valuable instruction, and because we have profited from our association with her as a friend and a teacher, we respectfully dedicate this year book to Mrs. Jay W. Harlan.

As the efficient head of the Music Department she has brought honor both to Centre College and to her students.

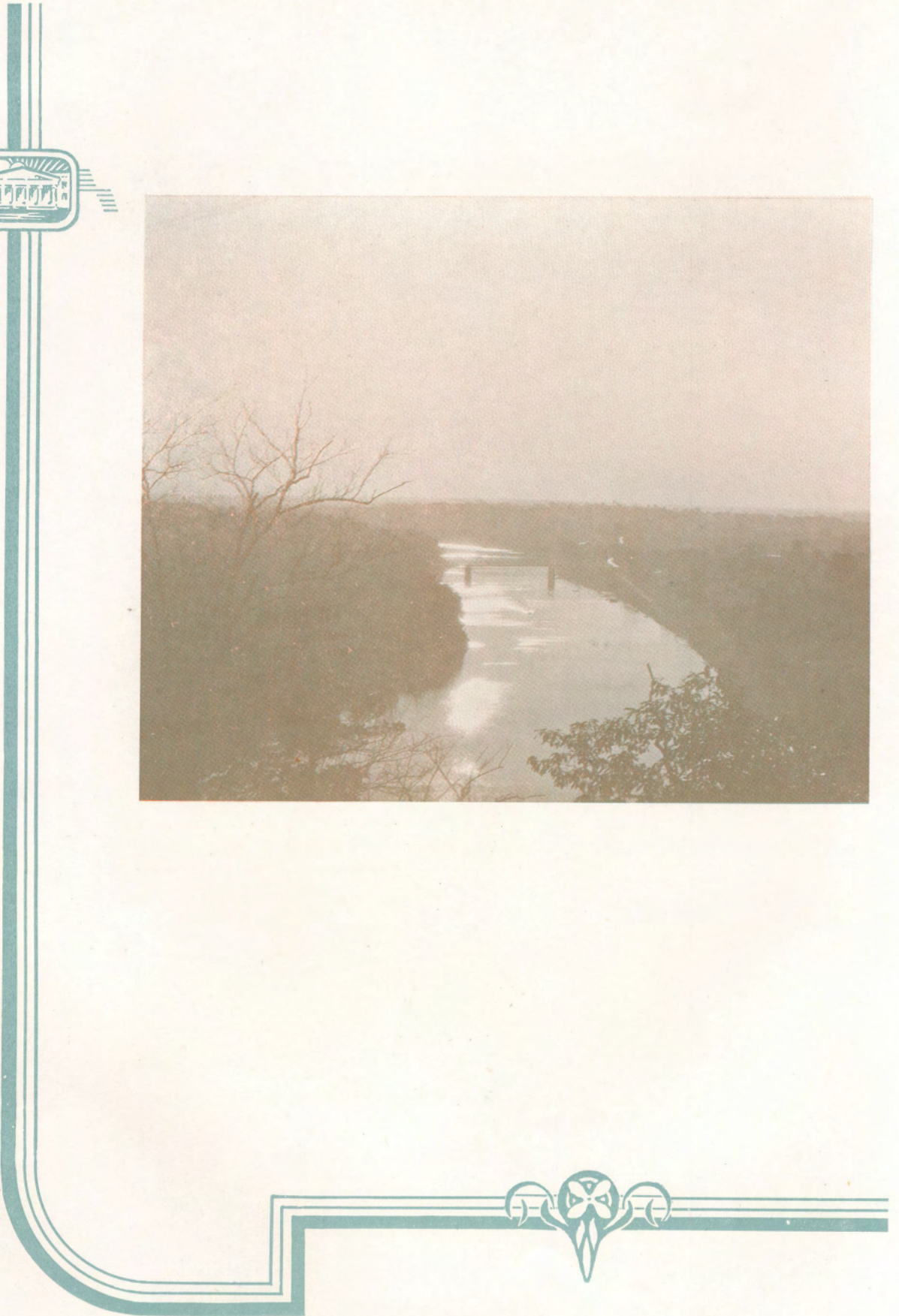
Among her students she may count many friends who are indebted to her for her contribution to their lives, and for her untiring efforts to develop their talent.



ALBERT E. PORTER
Professor of Ancient Languages

Many might be the attributes listed for the man by his multitude of friends. One attribute alone describes him: The answer to an age-old situation, "When a fellow needs a friend," he finds him in "Doc" Porter.

We take pride in dedicating this year book to an earnest student, an excellent teacher, a firm friend, a man who is highly honored and respected by every student on our campus.

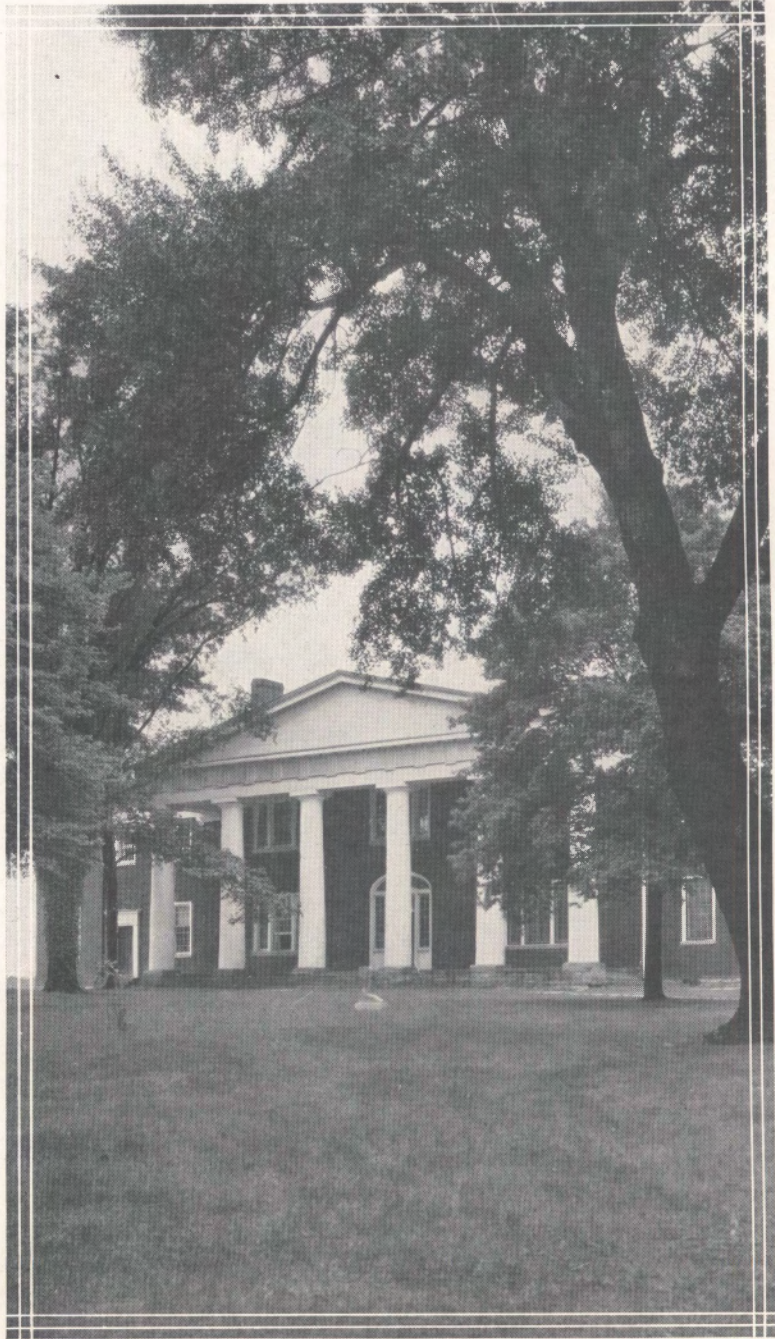


SEPTEMBER



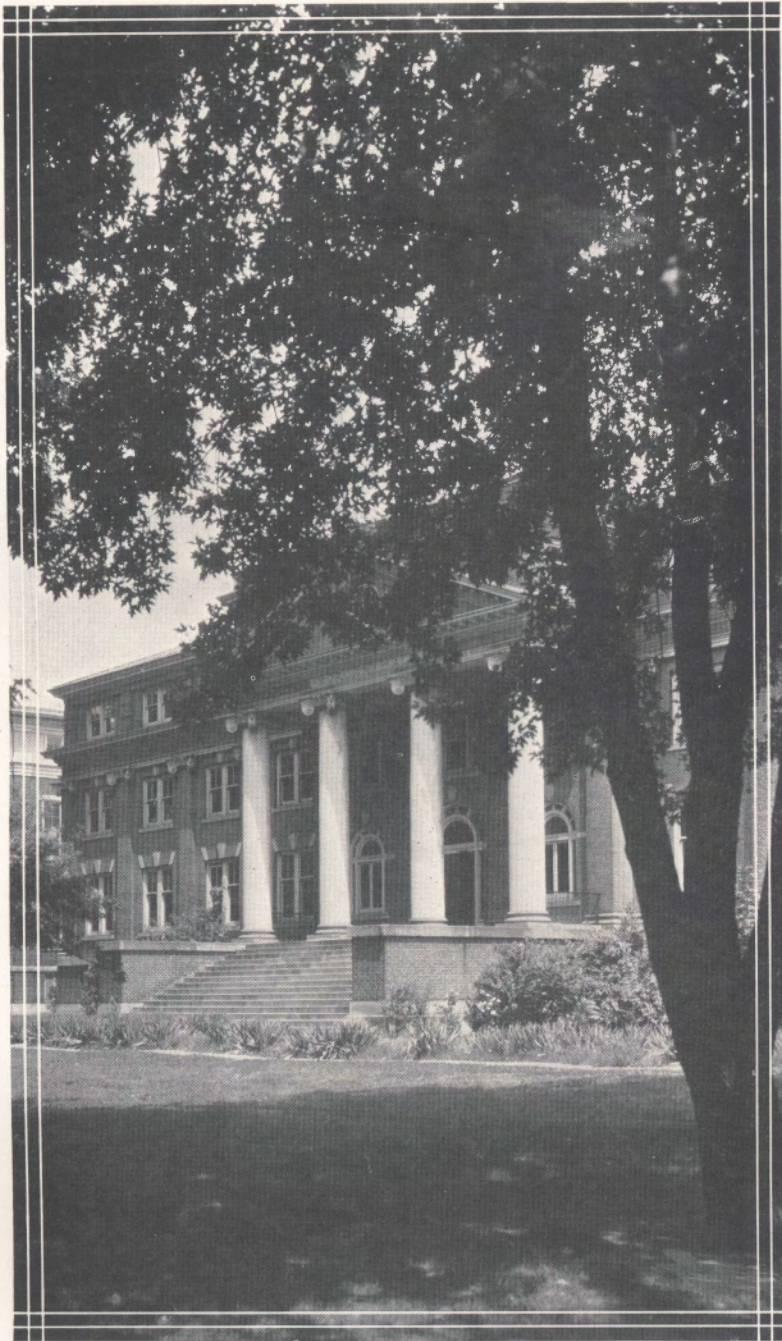
MISS ALICE PILKINGTON





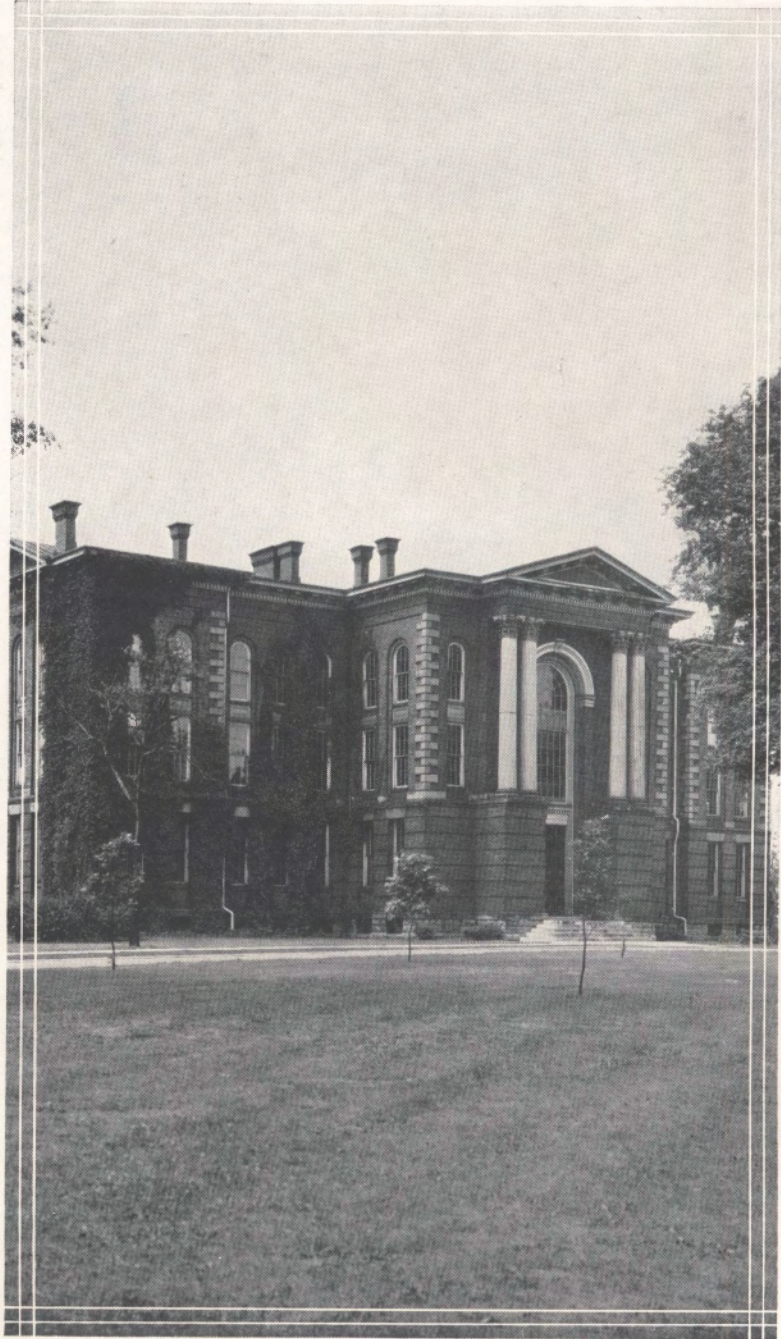
OLD CENTRE





MORGAN HALL





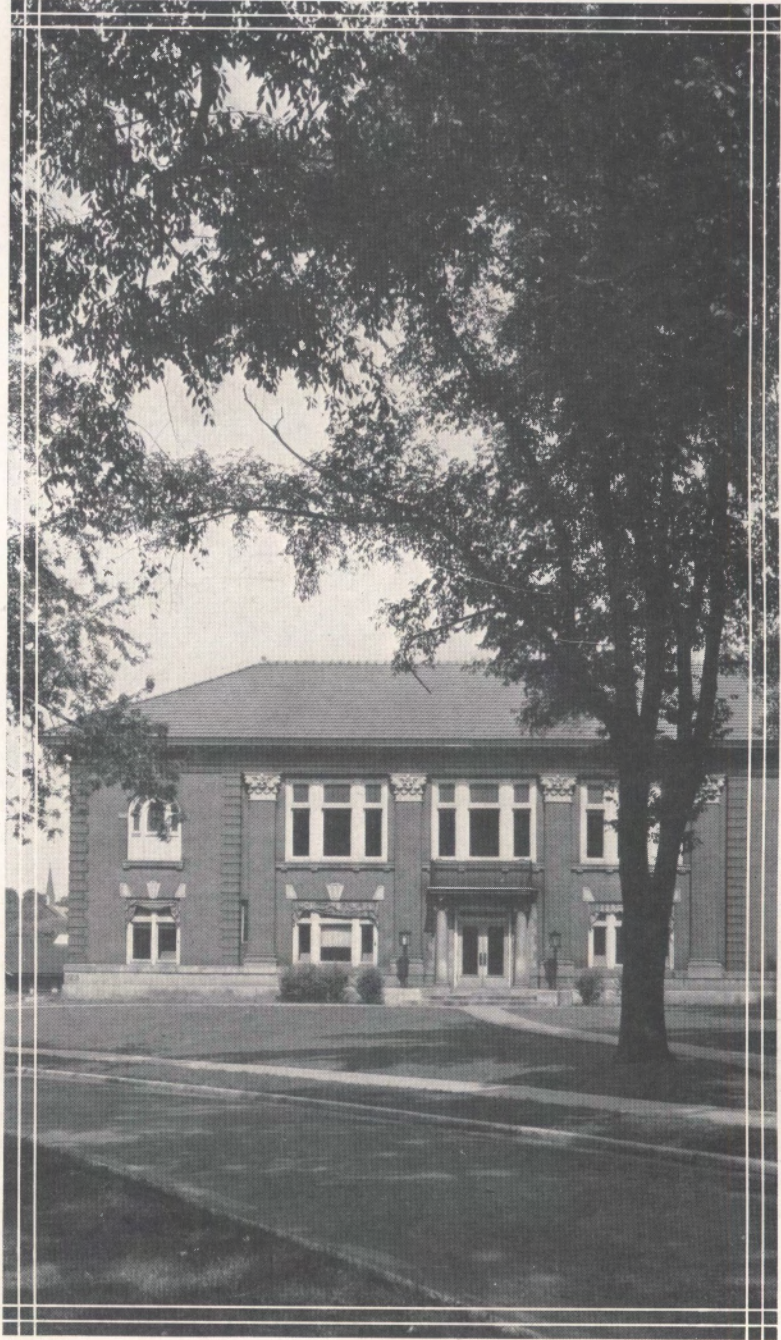
MAIN BUILDING





WEST HALL





LIBRARY





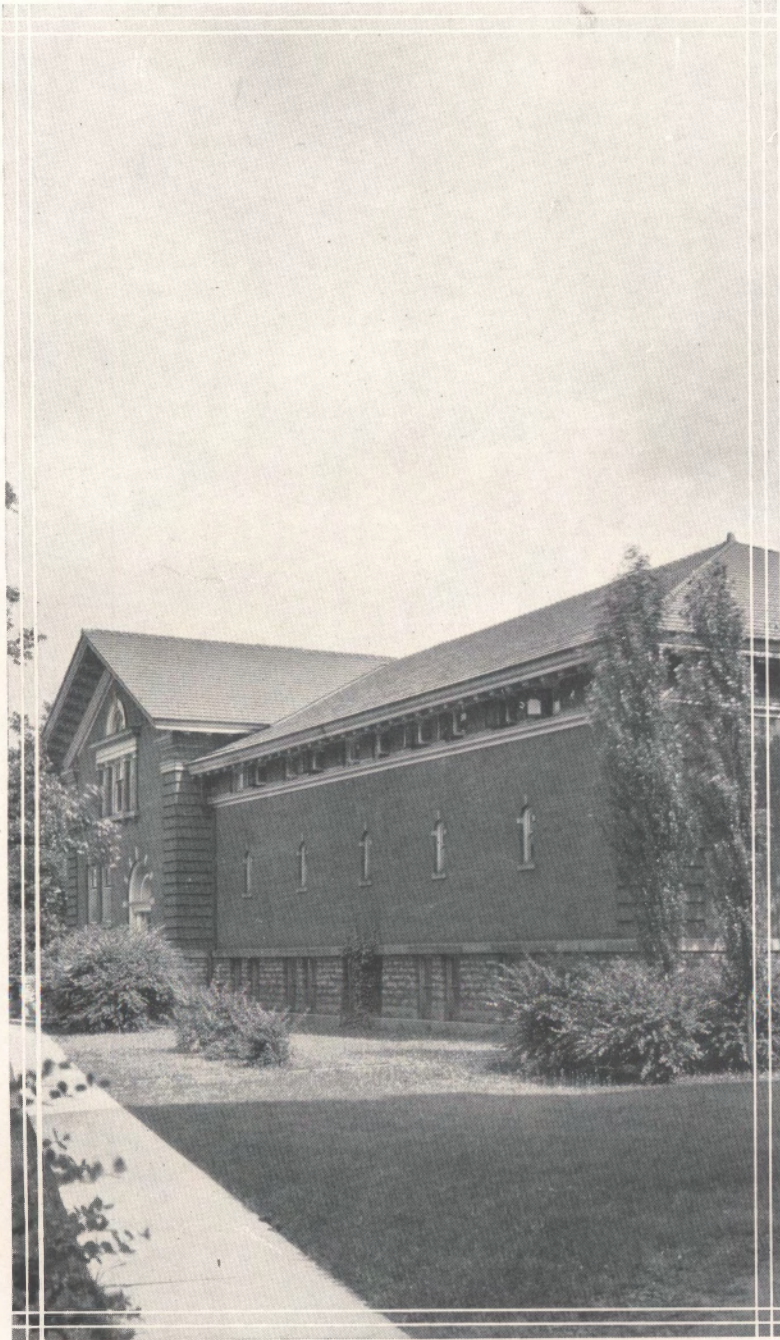
YOUNG HALL





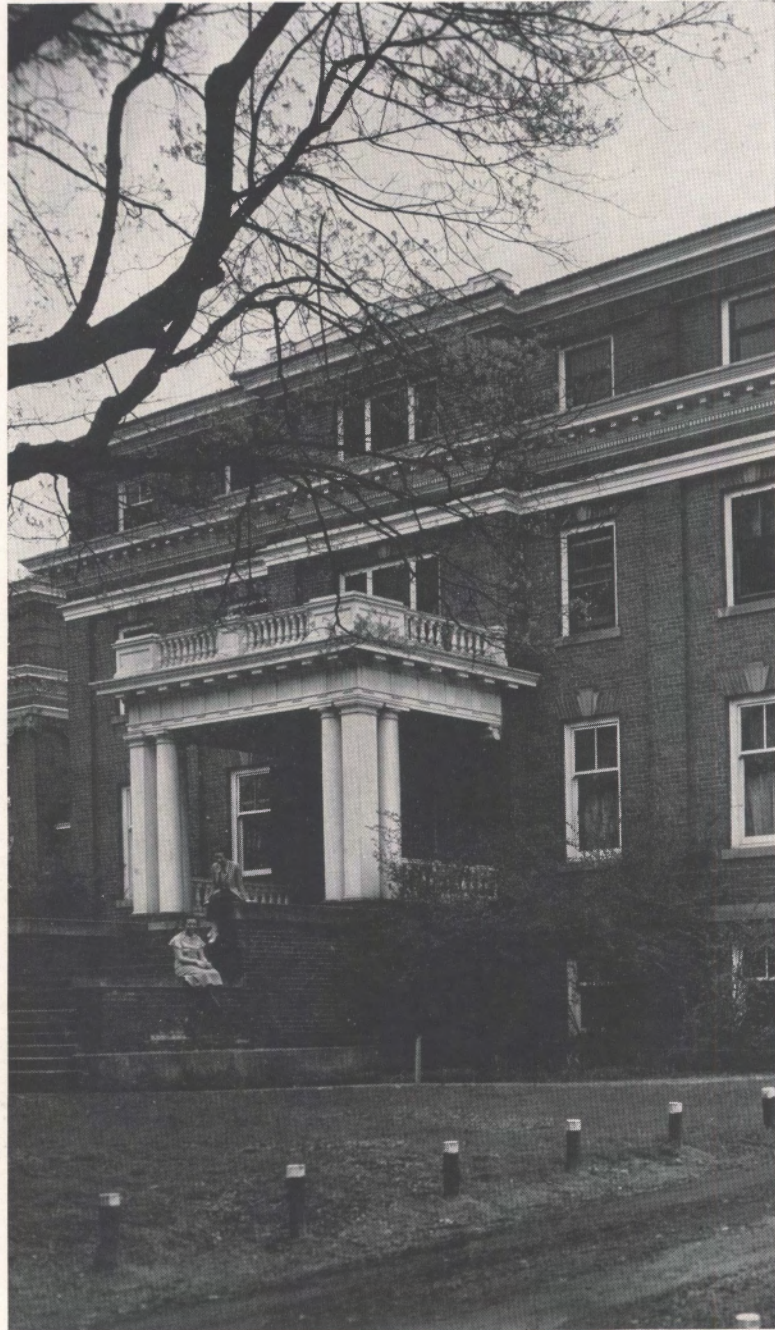
WOMAN'S GYMNASIUM





BOYLE HUMPHREY GYMNASIUM



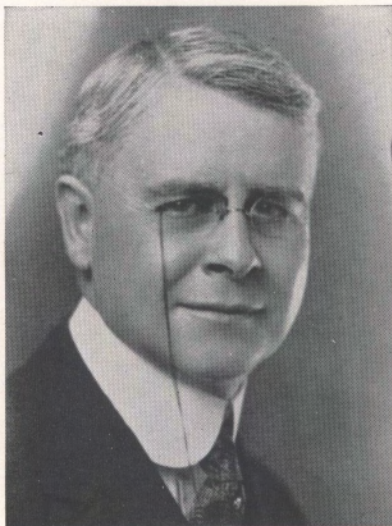


EAST HALL





DR. CHARLES JOSEPH TURCK
President Centre College



DR. FRANK LEWIS RAINEY
Dean of Men

S. B. 1889, Purdue University.
Graduate Work University of Chicago
1895-1897, 1898-1900.
Sc. D. Parsons College 1925.
LL. D. Transylvania College 1930;
Centre 1933.
Professor Biology Parsons College
1903-1908.
Professor of Biology Centre College
1908.
Dean Centre College 1928.
Member of A. A. A. S. 1903-1920;
Fellow 1920.
Member Eugenic Research Association,
American Genetic Association,
Kentucky Academy of Science,
Kentucky Folk Lore Society, Sigma
Chi, Round Table, Omicron Delta
Kappa.



MISS LUCY BLAYNEY THOMAS
Dean of Woman's Department of
Centre College

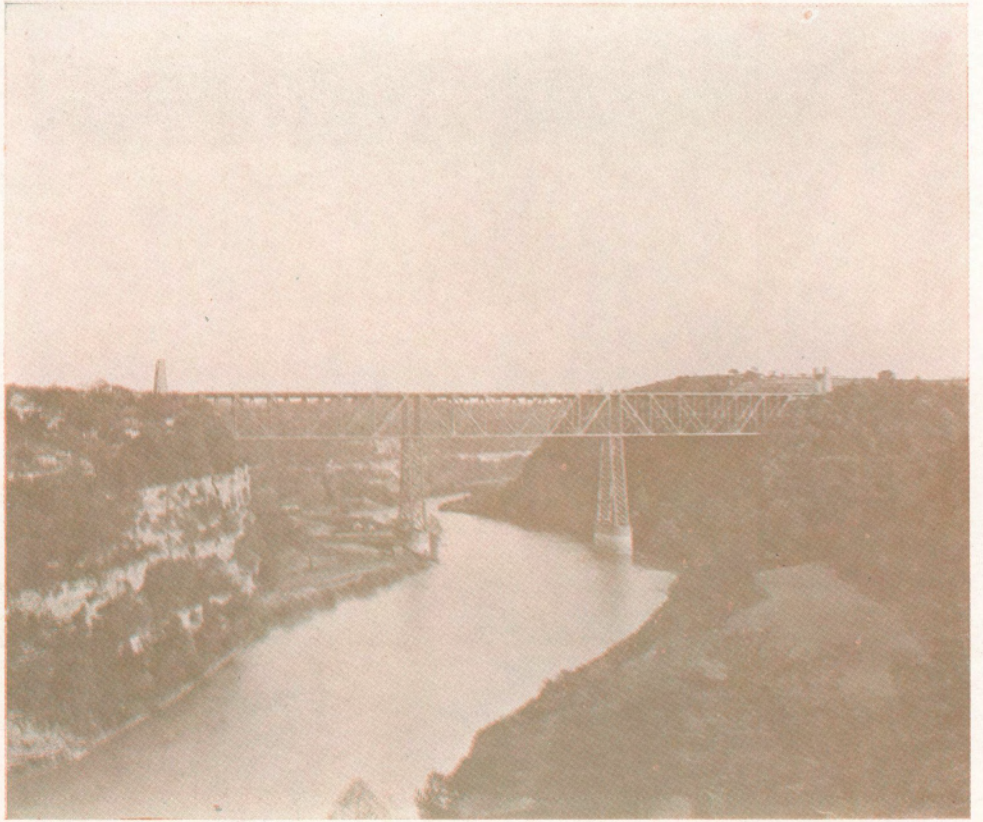
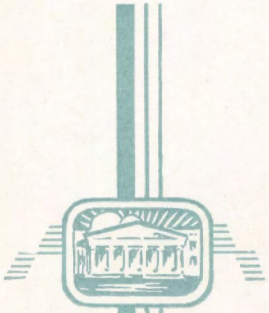
B. A. University of Kansas.
M. A. Columbia University.
Instructor Kentucky College for Women.
Instructor Ward-Belmont College.
Instructor Miss Castle's School, Tarrytown-on-the-Hudson, New York.
Dean of Women Centre College
1933-34.

JAMES HOWELL HEWLETT
A. M., Ph.D., Associate Dean





CALLAWAY MOODY





OCTOBER



MISS VIOLA TURCK





FACULTY

- CHARLES BELL McMULLEN, Ph. D., Professor of Philosophy.
 CHARLES ETHELBERT ALLEN, A. M., Professor of History and Political Science.
 JOHN HOWARD BILES, M. S., Professor of Physics and Mathematics.
 ARTHUR R. FEHN, Ph. B., Associate Professor of Mathematics.
 ALBERT EUGENE PORTER, A. M., Professor of Greek and Latin.



RUBY IRENE SYCK, Pikeville, Kentucky—Transfer, Pikeville Junior College; Glee Club '31, '32; Athletic Association; International Relations Club; English Club; German Club; Student Council.

JOHN CRAWFORD CRENSHAW, Huntington, West Virginia—President of Student Body '34; Centre College Christian Association; Pitkin Club.



FACULTY

JAMES REID STERRETT, JR., A. M., Associate Professor of English and Speech.

BURRUS MUNN, A. M., Associate Professor of Economics and Education.

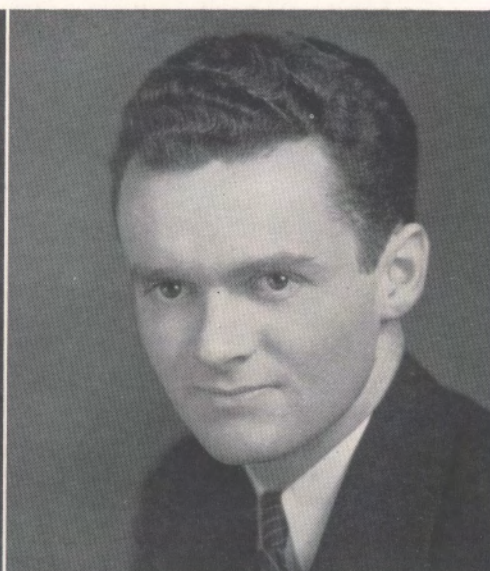
THOMAS EVERETT COCHRAN, Ph. D., Professor of Psychology and Education.

EUGENE WILBUR COOK, JR., A. M., Associate Professor of Biology.

HARVEY JOHNSON ALEXANDER, A. M., Assistant Professor of Spanish.



LISSA LIDDELL MURPHY, Danville, Kentucky
—Athletic Association '30, '31, '32, '33, '34;
Vice-President, Freshman Class; English Club
'31, '32, '33, '34; German Club '32, '33, '34;
Secretary, Junior Class; International Re-
lations Club; Vice-President, Senior Class.



FRED GALLIGHER ROWELL, Roswell, New
Mexico—Sigma Alpha Epsilon; Omicron Del-
ta Kappa, President '34; Keys Honorary
Fraternity; Manager Freshman Football;
Manager Varsity Football '33; Manager Bas-
ketball '32; Centre College Players '32, '33,
'34; Feature Editor "Olde Centre" '31; Busi-
ness Manager "Olde Centre" '33; Student
Council '32, '33, Vice-President '34; Social
Committee '32, '33; Inter-Fraternity Council
'33; Treasurer of Senior Class.



FACULTY

LILLIE HAYNES McMULLEN, A. B., Instructor in Art.
 EDWARD A. H. FUCHS, Ph. D., Professor of German.
 THORNTON POWELL TERHUNE, Doctorat de l'Universite de Toulouse, Associate Professor of History.
 JOSEPH PROCTOR KNOTT, Ph. D., Associate Professor of French.
 JESSIE LILLIAN KEEP, A. M., Professor of Physical Education.
 ALICE H. RECORD, A. M., Professor of Latin; Librarian.



FLORENCE DRAIN BASS, Lebanon, Kentucky—Athletic Association '30; Freshman Pitkin Club '30; International Relations Club; Pitkin Club; English Club; Cotillion Club '33, '34; Student Council '33, '34.



JAMES PRENTICE EDWARDS, Hopkinsville, Kentucky—Football '30, '31, '32, '33; Captain '33; Track '31, '32; President Senior Class '34; Spanish Club '34.

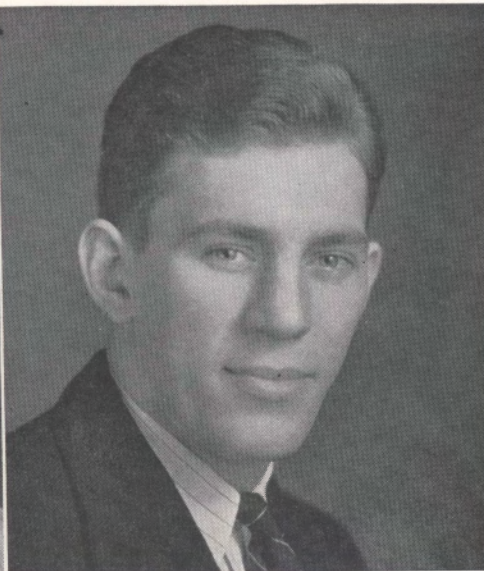


FACULTY

MILTON CARLISLE MINOR, LL. B., Professor of Economics.
 LULA MASTIN HARLAN, B. M., Professor of Music.
 MARY SWEENEY, A. M., Assistant Professor of English.
 MARY PHILLIPS STREET, B. M., Instructor in Music.
 FRANCIS POWELL CHEEK, D. D., Professor of Bible.



ALICE HART SANDERS, Danville, Kentucky—
 English Club '32, '33, '34.



FREDERICK EDWIN HENN, Little Rock, Arkansas — Sigm Chi; Freshman Football; Freshman Track; Football '31, '32, '33; Track '31, '32.

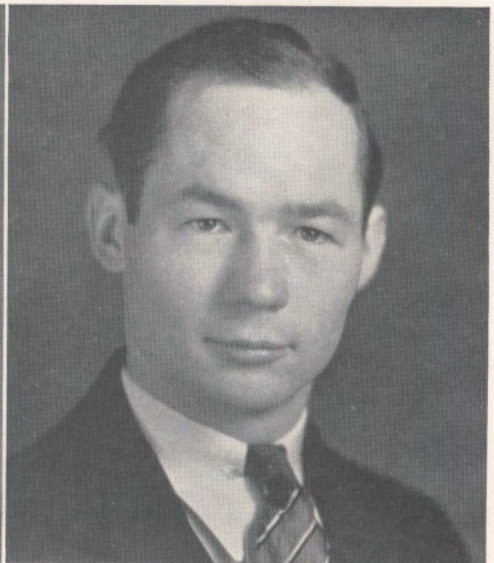


FACULTY

RICHARD IRWIN RUSH, Ph. D., Professor of Chemistry.
 ANNIE JANE SMITH, A. M., Professor of Home Economics.
 HERBERT A. MEYER, A. B., Business Manager.
 LUCY BELL PURYEAR, A. B., Assistant Librarian.
 CURTIS HOBBS BOTTOM, A. B., Instructor in Biology and Mathematics.



LUCY JANE ROSS, Carlisle, Kentucky—Athletic Association '30, '32; Athletic Council '32, '33, '34; Captain Basketball Team '32, '33, '34; English Club, Vice-President '32, '33; Hockey Team; House Chairman; Student Council; Student Cabinet; Vice-President, Senior Class.



THOMAS HOPKINS JONES, Covington, Kentucky—Sigma Chi, President '33, '34; Freshman Basketball; Varsity Basketball, Captain '33; Co-Captain '34; Varsity Tennis, Captain '33; English Club; International Relations Club; Omicron Delta Kappa.

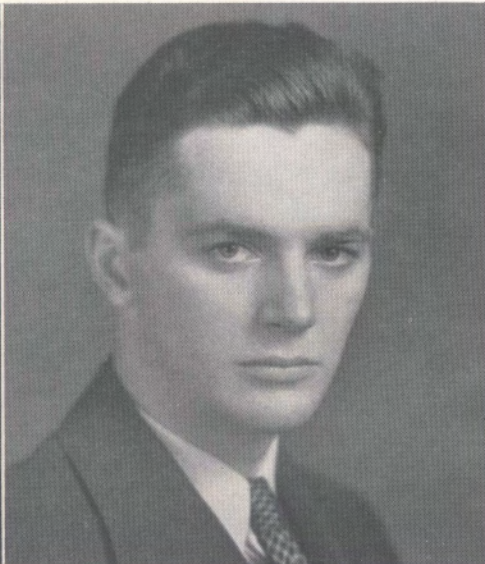


FACULTY

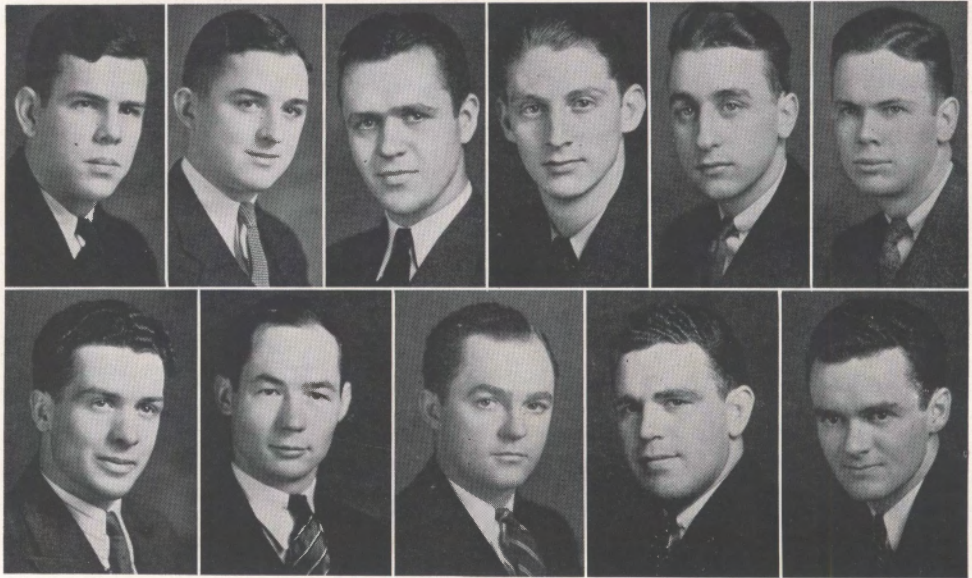
ISABEL ZANON CALDWELL, Secretary to the President.
 JACOB J. STEIGER, Superintendent of Buildings and Grounds.
 JANE HASELDEN, A. M., Assistant Professor of French.



ANN FRANCES PENNINGTON, Stanford, Kentucky—Transfer, Agnes Scott College; Editor of the Handbook '32, '33; Feature Writer in Centre College Cento '32, '33; Woman's Department Editor of Centre College Cento '33, '34; Treasurer of Senior Class; Student Cabinet '33, '34; Pitkin Club; English Club '33, '34.

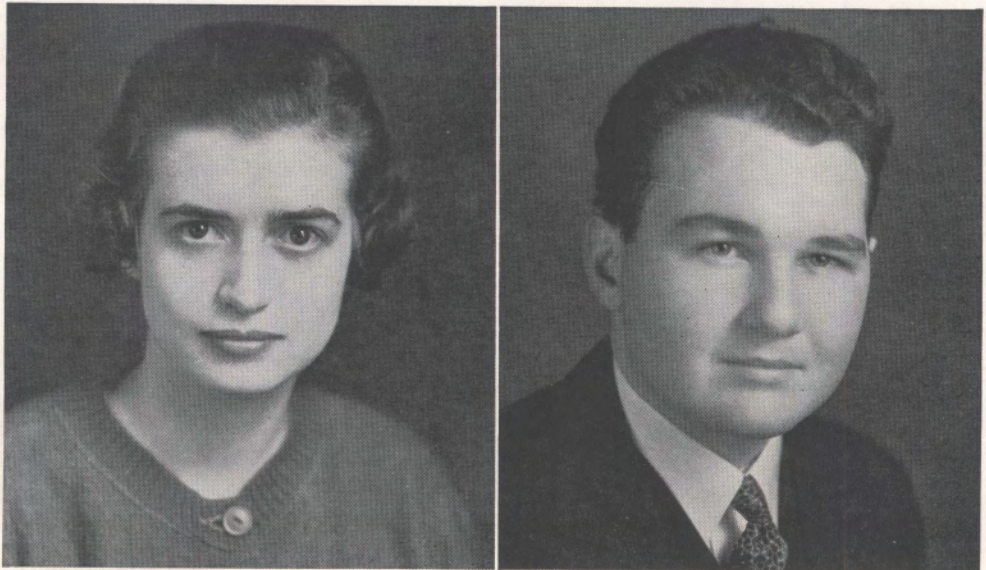


WILLIAM HUGHES JACKSON, JR., Danville, Kentucky—Phi Delta Theta.



STUDENT COUNCIL—MEN'S DEPARTMENT

Top Row: Durham, Calvert, Gartrell, Allen, Metcalf, Bohon.
 Second Row: Crenshaw, President; Jones, Barker, Edwards, Rowell, Vice-President.

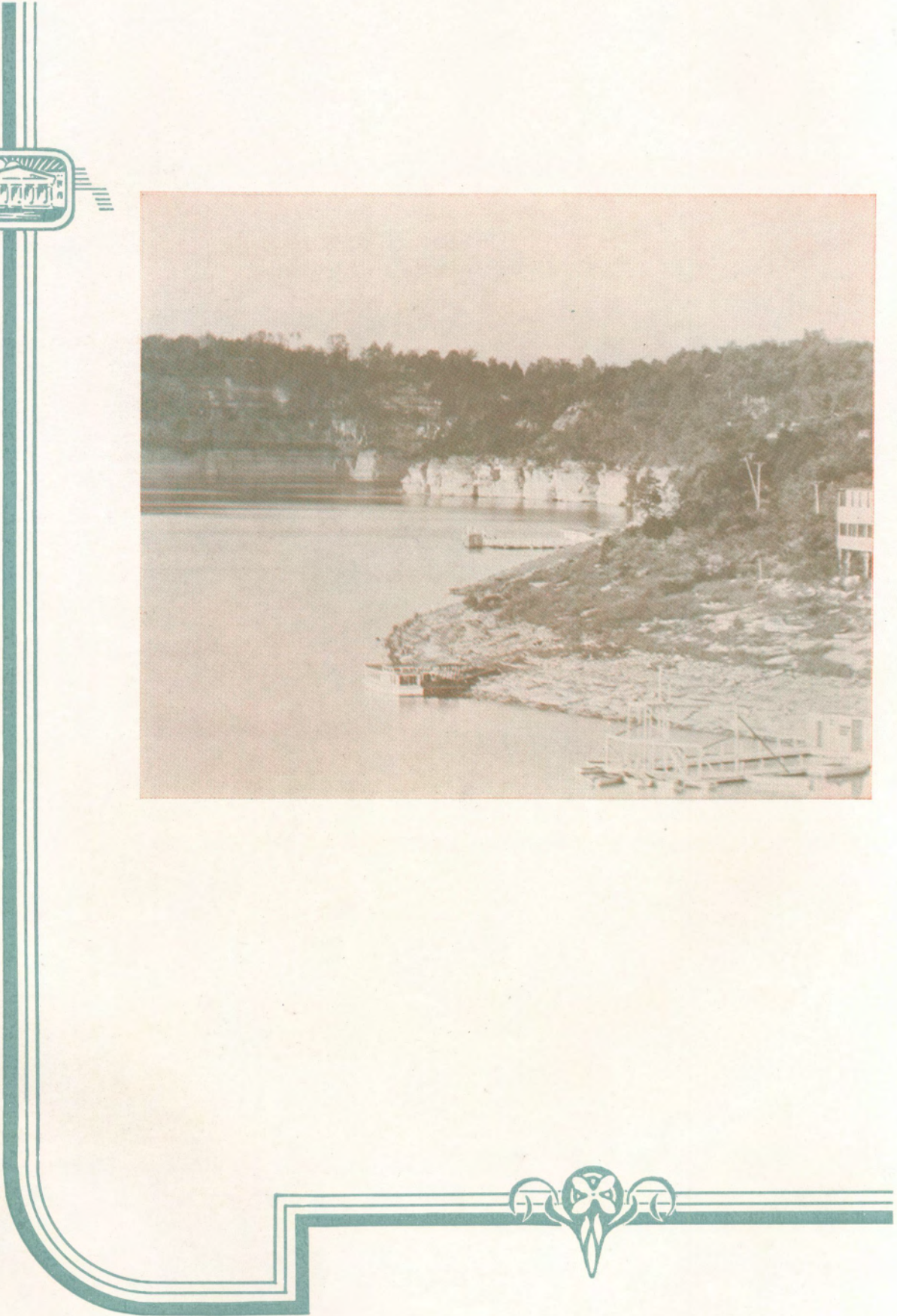


ELIZABETH LOUISE MONTGOMERY, Rock-
 ville, Maryland—Transfer, Mary Baldwin
 College; English Club '33, '34.

LAWRENCE SWART, Rochester, New York—
 Phi Kappa Tau; Centre College Cento Staff.



ROY CONVERSE





NOVEMBER



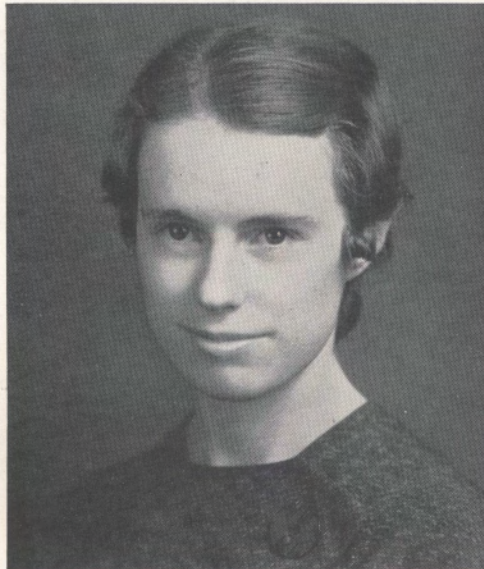
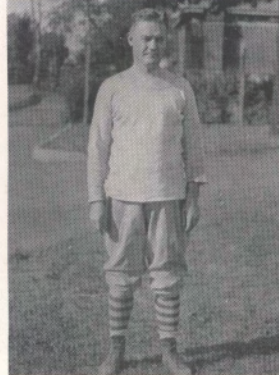
MISS FRANCES STITH



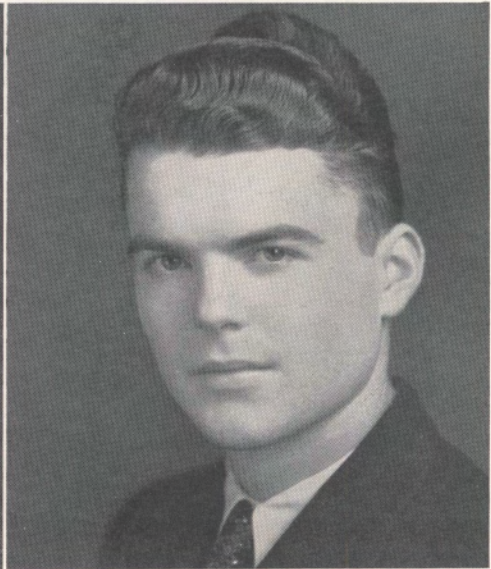


EDWIN KUBALE
Director of Athletics

NORRIS ARMSTRONG
Assistant Coach



DORIS ASBERINE GUFFEY, Danville, Kentucky—Athletic Association '30, '31; Glee Club '30, '31, '32; English Club '33, '34.



ALLEN PEELER DODD, Louisville, Kentucky—Sigma Alpha Epsilon, President '34; Deindogian Literary Society, Secretary-Treasurer '32; Pitkin Club, Vice-President '34; Interfraternity Council, Vice-President '32; English Club, President '33; English Department Assistant '32, '33; Round Table; Omicron Delta Kappa; Cotillion Club.

DR. A. E.
PORTER
Faculty
Chairman
Athletics



J. H. BILES
Freshman
Football
Coach



FRED
ARNICAR
Assistant
Freshman
Coach

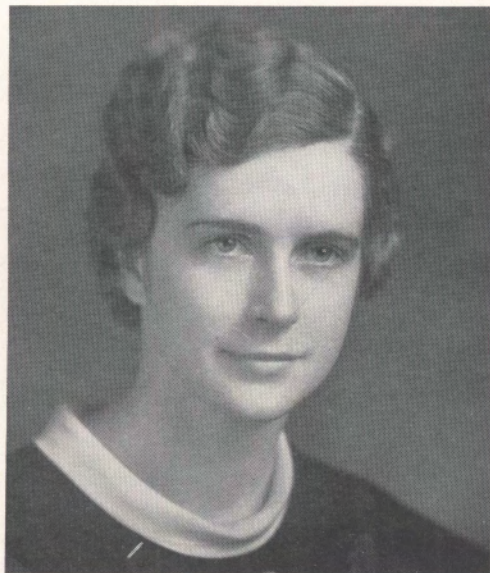


RUSH
NICHOLSON
Varsity
Manager
1933

RESUME OF 1933 FOOTBALL SEASON

SEPTEMBER 30—CENTRE 30; UNIVERSITY OF LOUISVILLE 0—AT LOUISVILLE.

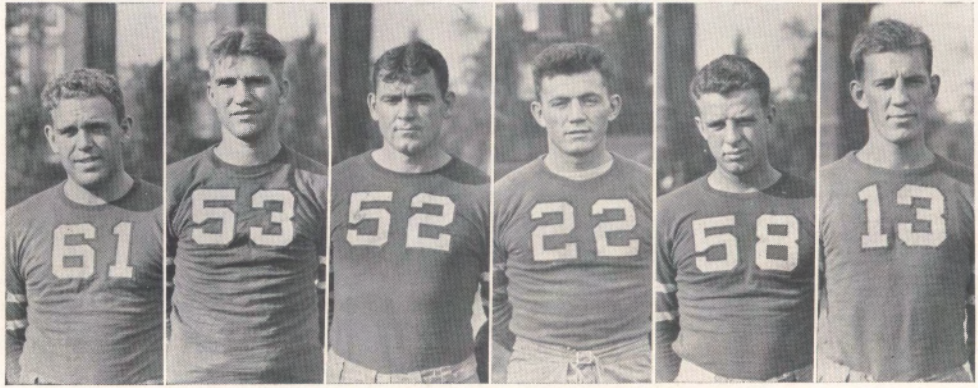
The 1933 season for the Colonels opened at Parkway Field in Louisville during a spell of torrid weather that hadn't been surpassed for heat during the entire preceding summer. Eleven



JULIA WEST WOODSON, Middlesboro, Kentucky—Freshman Pitkin Club; Vice-President of Freshman Class; Spanish Club '31, '32; Rounde Table, Vice-President '34; Basketball Team; Hockey Team.



CHARLES EDWIN JEFFRIES, Springfield, Kentucky—Glee Club '31, '32; Centre College Christian Association '30, '31, '32; Class Historian '32, '33; French Assistant '32, '33, '34.



"Bull" Edwards
(Captain)

"Charlie"
Barksdale

"Arky"
Boyd

"Buck"
Moody

"T."
Anderson

"Fritz"
Henn

perspiring Cardinals from the University of Louisville battled eleven perspiring Colonels on somewhat uneven terms because of the lack of experience of the Louisville squad. Hendren had little difficulty in ripping off two markers in the first quarter for Centre, scoring the first time after a run of 66 yards.

The second frame was marked by the substitution of an entire new team by Coach Kubale. Bartlett scored soon after the whistle by toting a pass from Hamilton over the goal line for the third tally of the fray.

Going into the last half, the second stringers continued their drive and netted two more touchdowns with Moody and Kennedy dividing honors. The curtain rang down on the Colonels' first victory of 1933 to the tune of 30 to 0.

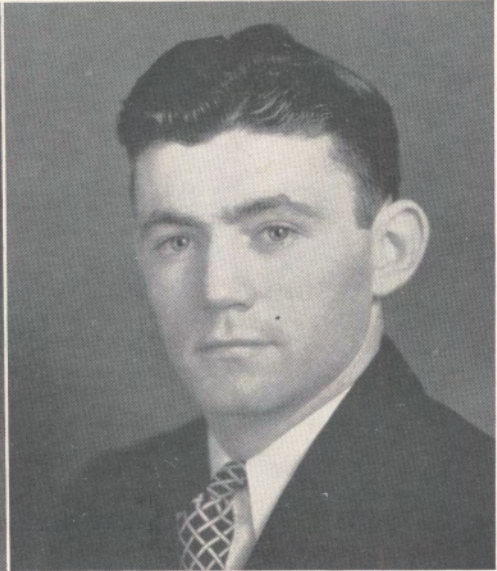
OCTOBER 6—CENTRE 36; TRANSYLVANIA 0—AT LEXINGTON.

Entering their second contest on the schedule, the Gold and White experienced little trouble in subduing Transylvania by a score of 36-0 at Lexington.

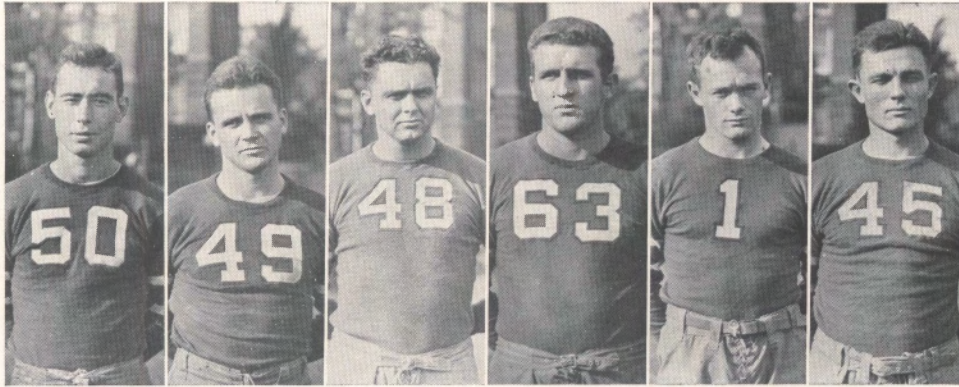
The play of both teams was marked by early season sluggishness, which persisted throughout the engagement in the form of rough and ragged going.



FRANCES TOULMIN GARRARD, Winchester, Kentucky—Freshman Pitkin Club; Athletic Association '30, '31; English Club '33, '34; Cotillion Club '33, '34.



CALLAWAY BOOKER MOODY, JR., Newcastle, Kentucky—Football '30, '31, '32, '33; Track '31, '32, '33; Freshman Basketball; English Club; Spanish Club.



"Freckles"
Hamilton

"Little Doc."
Hendren

Herschel
Giles

"Groucho"
Marks

"Red"
Kennedy

"Jo"
Ensminger

Moody opened the scoring of the day with two off-tackle drives that resulted in as many touchdowns. His action was followed shortly afterward when "Red" Kennedy scampered over the line for another marker. Two passes from Hamilton to Barksdale and Bartlett respectively were converted with little trouble to end the scoring for Centre. Final results: Centre 36; Transylvania 0.

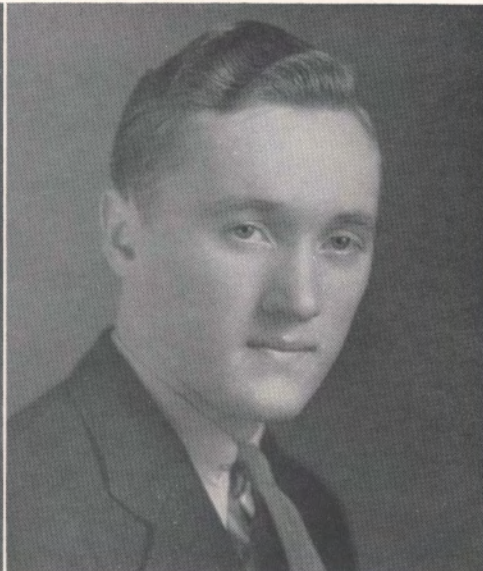
OCTOBER 12—BOSTON COLLEGE 6; CENTRE 0—AT BOSTON, MASSACHUSETTS.

The Colonels' first setback of the season came at the hands of the Boston College Eagles. For as many times in three years the Colonels dropped 6 points in the laps of the Easterners without being able to achieve more than the proverbial "goose egg".

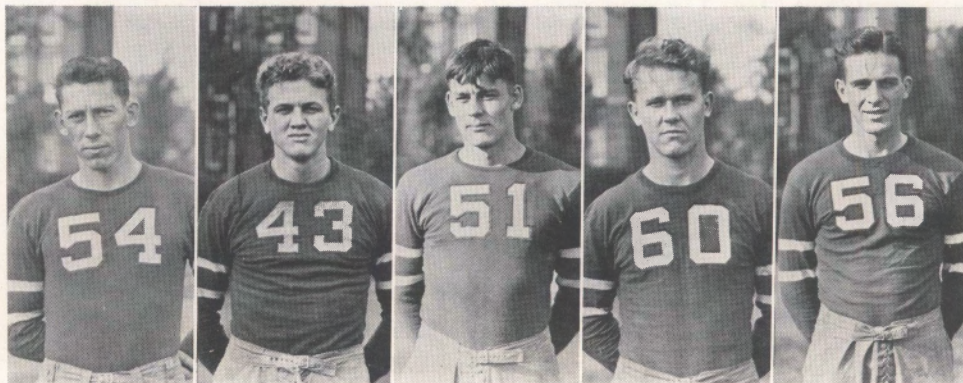
However, the victory of the Boston outfit was earned at the expense of fifty-seven minutes of scoreless playing time. Battling on even terms until within three minutes of the closing whistle, the Colonels were given a disastrous tumble by Old Man Fate in suffering a penalty on the fifteen-yard line, which gave the ball to Boston on the seven-yard line with four downs in which to score. The deciding blow came when Blake, Eagle halfback, succeeded in plunging the ball for two yards and the winning tally.



ANNA ELISA ANDRES, Ross, Ohio—Freshman Pitkin Club; Glee Club '30, '31, '32; Spanish Club '30, '31, '32; Athletic Association '30, '31, '32, '33; English Club '30, '31, '32, '33, '34; Hockey Team; President Sophomore Class; Athletic Council '31, '32, '33, '34; Student Council '33, '34; Student Cabinet '33, '34; Pitkin Club '31, '32, '33, '34.



PAUL JEFFERSON CARTER, JR., Erlanger, Kentucky—Freshman Football; Freshman Basketball; Freshman Pitkin Club; Varsity Basketball '33; English Assistant '32, '33, '34; Rounde Table '33, '34, President '33; English Club, President '34.



"King B."
Bartlett

"Tip"
Goodrich

"Jojo"
Gore

"Bob"
Ramsier

"Sully"
Sullivan

OCTOBER 21—FURMAN 7; CENTRE 6—AT DANVILLE.

The Colonels' string of defeats was lengthened by one when in their first home game they were able to score only six points against the seven made by the Purple Hurricane of Furman University, from Greenville, North Carolina.

The Furman squad presented perhaps the most formidable opposition that the Colonels had faced up to that time during the season. Depending entirely upon off-tackle plays, the Carolina boys succeeded in placing the ball over the line in the first quarter when Smith battled his way from the eight-yard stripe.

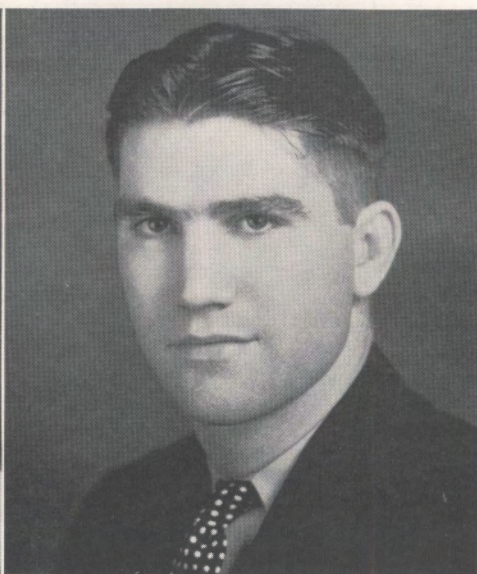
Centre's hopes for victory were revived late in the third quarter when Hamilton flipped a pass to Barksdale to make the score Centre 6; Furman 7. These hopes were blasted, however, when Barksdale failed to kick the goal for the extra point. The remaining time was taken up by an even struggle in the center of the field.

OCTOBER 28—CENTRE 7; XAVIER 0—AT CINCINNATI.

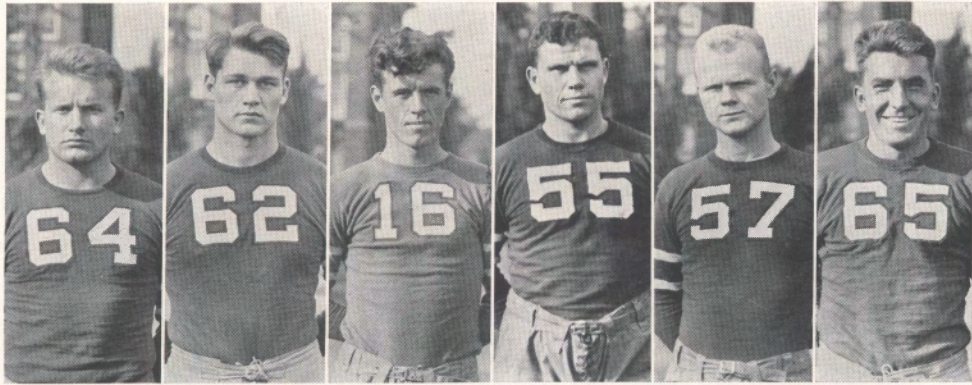
Smarting from their two previous defeats, the Colonels entered the Xavier contest slightly the under-dogs as the Musketeers had recently held the strong Carnegie Tech outfit to the small



MARY LOUISE DURHAM, Danville, Kentucky—
Glee Club '32, '33, '34; Centre Majors '33;
Transfer University of Kentucky.



CHARLES EDWARD BARKSDALE, Danville,
Kentucky—Football '30, '31, '32, '33; Basket-
ball '33; Spanish Club.



"Dal"
Long

"Duke"
Lancaster

Worley
Hawthorne

"Rayverse"
Converse

"Buddy"
Eline

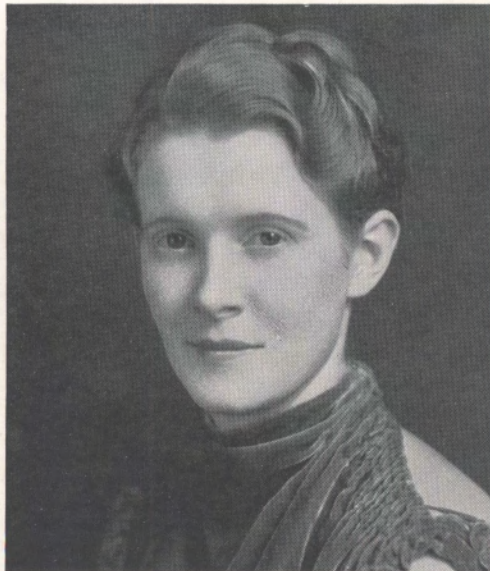
"Buck Creek"
Snyder

score of 3 to 0. By smart football and a surprise attack the Colonels scored in the first few minutes of play.

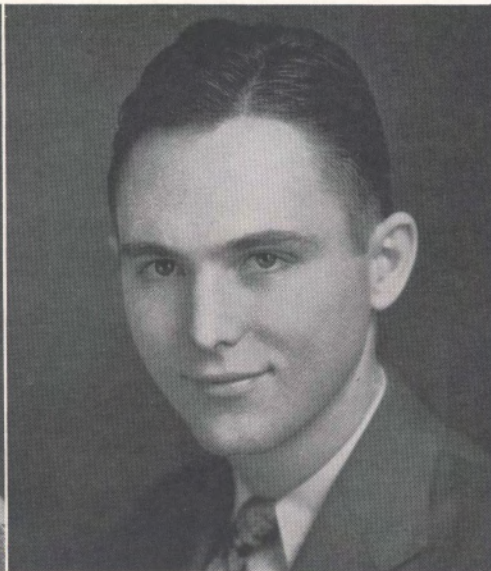
After Xavier received the kickoff and was held for downs, the Colonels took the ball and ran four plays and that was all there was to it. Quarterback Hamilton succeeded in getting his team in good passing territory in two plays. On two passes from Hamilton to Eline another Centre-Xavier game was over as far as scoring was concerned. Play for the next three quarters remained within the two thirty-yard stripes.

NOVEMBER 4—CENTRE 0; PITTSBURGH 37—AT PITTSBURGH, PENNSYLVANIA.

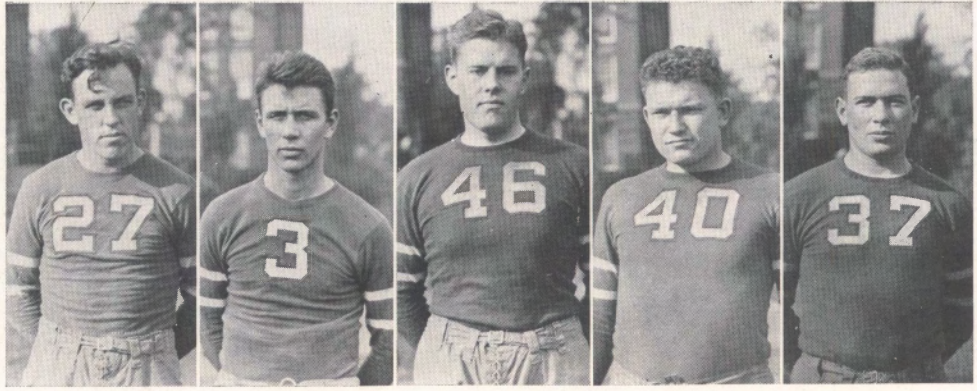
Playing a bang-up first quarter against a team superior both in numbers and ability, the Colonels twice during the course of the first period bore deep into Pitt territory to the Panthers' four-yard line, only to be held for downs. During the second quarter each team fought to outwit the other in finding weaknesses and advantageous openings. Shortly after the opening of the second half, the Panthers found a weak spot in the Colonel defense and completed a pass for a touchdown from the Colonels' forty-yard line. From then on things went from bad to worse and 37 to 0 is the tale of woe.



LENORA BURTON, Danville, Kentucky—Transfer, Rollins College.



JACK SAMUEL TROTTER, Bellevue, Kentucky—Centre College Players, Stage Manager '32, '33, '34; Alpha Tau Omega; Transfer, Purdue University.



"Ted"
Meadors

"Bob"
Kidd

"Jack"
Prall

"Les"
Putman

"Charlie"
Asher

NOVEMBER 11—CENTRE 13; BIRMINGHAM-SOUTHERN 6—AT DANVILLE.

In a contest destined to stand out as one of the most thrilling in the years of Centre football, the Colonels met the Birmingham-Southern Panthers from Alabama.

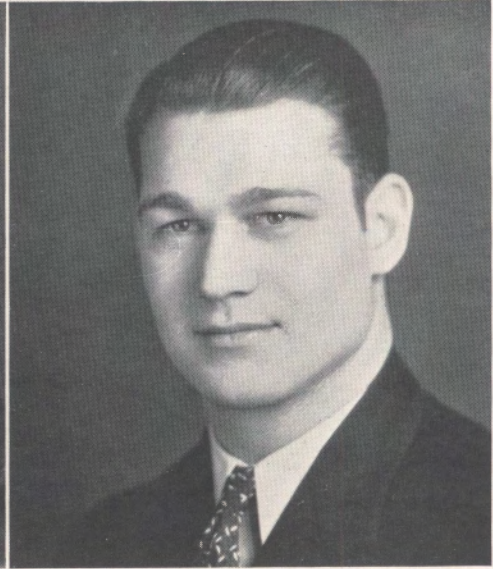
Late in the second quarter Hamilton squeezed off-tackle for a touchdown from the twenty-yard stripe and spectators felt that the game was on ice, but Centre failed to kick the extra point. The exhilaration of victory among the Centre supporters soon gave place to the sting of defeat, however, when early in the third quarter Teal, stellar halfback, of the Panther squad returned a punt for thirty yards to tie the score. An additional point on a pass changed the entire outlook for the Colonels and they set about to do something to remedy the situation. Efforts were in vain, however, until within one minute of the gun, when "Red" Kennedy accepted a punt on his thirty-seven-yard stripe and scooted down the side line for seventy yards and a touchdown. Centre fans like to tell the story of 13 to 7.

NOVEMBER 18—CENTRE 13; WASHINGTON & LEE 0—HOMECOMING AT DANVILLE.

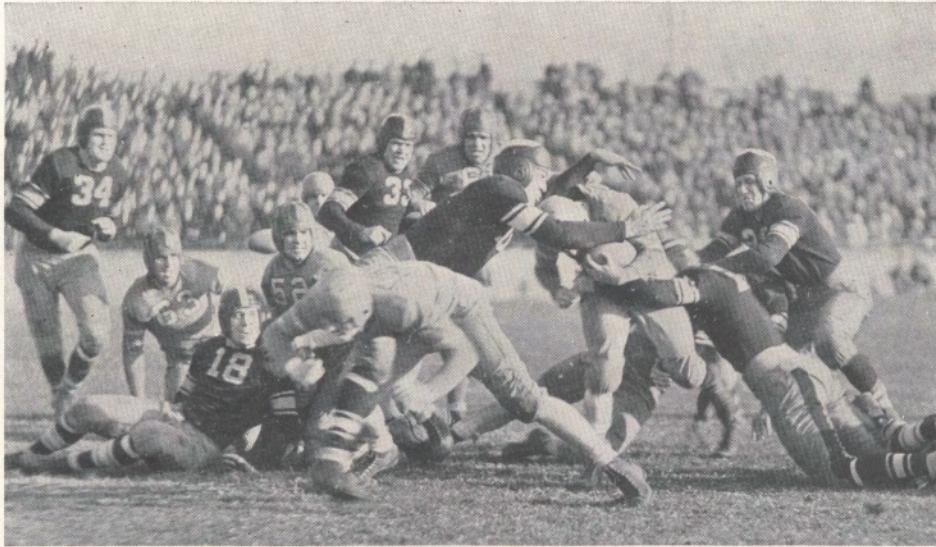
Fresh from a victory of 6 to 0 over the University of Kentucky, the Washington & Lee squad came into the Blue Grass on November 18, 1933 with the intention of adding the scalp



ELLEN COMSTOCK VAN WINKLE, Danville, Kentucky — Transfer, Randolph-Macon Woman's College; Athletic Association '31, '32, '33; Basketball Team '31, '32, '33; Glee Club '31, '32, '33; President of Junior Class; Athletic Council '32, '33, '34; Student Council '32, '33, '34; Student Cabinet '32, '33; Pitkin Club '32, '33, '34; English Club '32, '33, '34; Round Table '32, '33, '34; President Student Body '34; International Relations Club.



CHARLES EUGENE LANCASTER, Lexington, Kentucky—Phi Delta Theta; President of Freshman Class; Student Council '30, '31; Freshman Football; Varsity Football '31, '32, '33; Varsity Track '33, '34; Centre Majors '30, '31.



Centre vs. Washington and Lee, Homecoming at Danville, November 18, 1933

of another Kentucky school to its belt. However, the Colonels were of another opinion and the final whistle found the Colonels on top.

Quarterback Hamilton called a pass on third down on the Centre twenty-yard line, which was completed from Bartlett to Ensminger, who was finally checked on the W. & L. four-yard stripe. Two line bucks by Hamilton scored the touchdown. Soon thereafter, the "touchdown twins", Hamilton and Hendren, decided a pass might help and Hendren took Hamilton's flip behind the W. & L. goal line for the final score.

NOVEMBER 25—CENTRE 49; GEORGETOWN 0—AT GEORGETOWN.

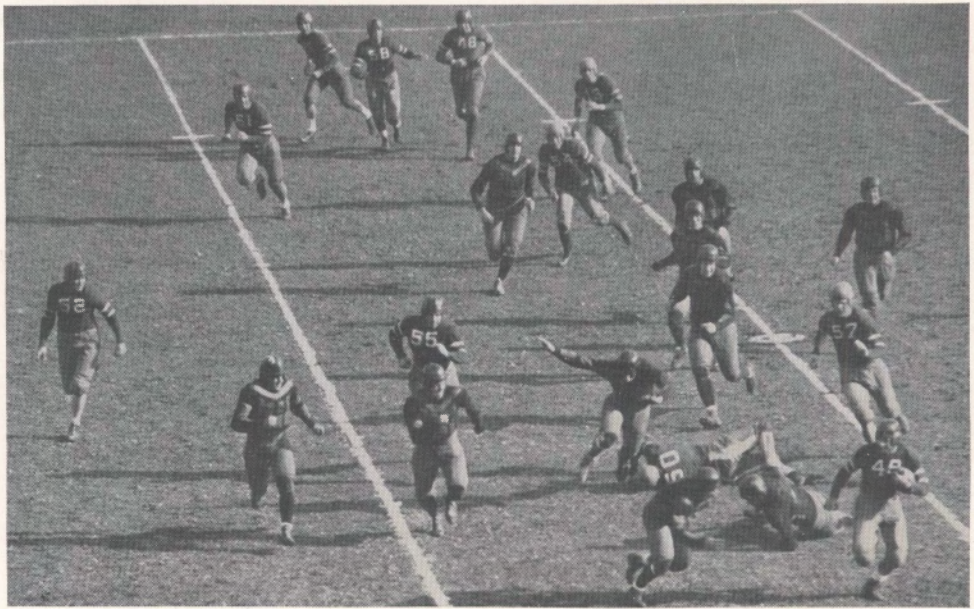
Led by Buck Moody, the Colonels had little difficulty in winning from Georgetown College by 49 to 0.



MARY BELL SPECKMAN, Louisville, Kentucky
—Athletic Association '30, '31, '32; Soccer Team '30, '31, '32; Athletic Council '32, '33, '34; German Club '32, '33; Volley Ball Captain '32, '33, '34; Hockey Team '32, '33, '34; English Club '33, '34.



CLAYTON JAMES BARKER, Waterbury, Connecticut—Phi Kappa Tau, President '34; Tennis Team '32, '33, '34.



Centre vs. Boston College at Boston, November 11, 1933

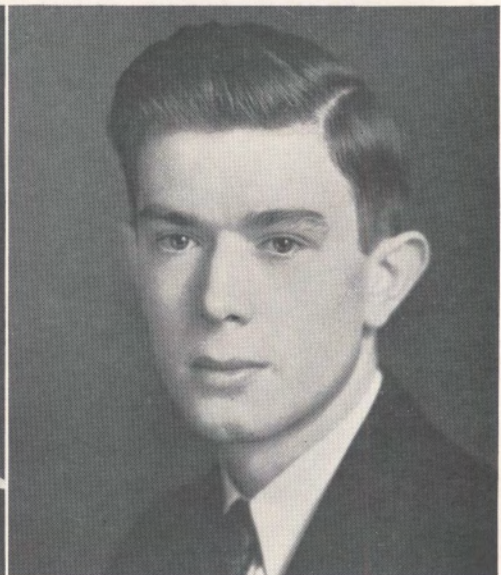
Scoring at will, Moody during the course of the sixty minutes of play crossed the Tiger goal line for six touchdowns. Sharing the limelight also were Colonels Bartlett, Eline and Kennedy, who each netted 6 points for Centre.

NOVEMBER 30—CENTRE 13; CHATTANOOGA 6—AT CHATTANOOGA.

On Thanksgiving Day the Colonels trotted out on the Chattanooga gridiron to compete in their annual struggle with the Tennessee institution that has given them a tough battle for the past five years. The Moccasins drew first blood early in the third quarter. Centre retaliated a short time later when Hendren bounced off-tackle for ten yards and a touchdown. The deciding score of the struggle was made shortly after the beginning of the last quarter when Hendren repeated his off-tackle run, this time for twenty yards and the winning marker.



EDNA MAY MARCUM, Danville, Kentucky—Athletic Association '30, '31, '32, '33, '34; Freshman Pitkin Club; Latin Club; English Club Glee Club '31, '32; Pitkin Club, Treasurer '34; Athletic Council '31, '32, '33, '34; Student Council '33, '34; Woman's Department Annual Editor '32, '33; Student Cabinet; International Relations Club.



SAMUEL HARDING NICHOLS, JR., Danville, Kentucky—Chi Beta Phi; Kappa Alpha; Assistant in Chemistry; Omicron Delta Kappa; Rounde Table.



JAMES P. EDWARDS



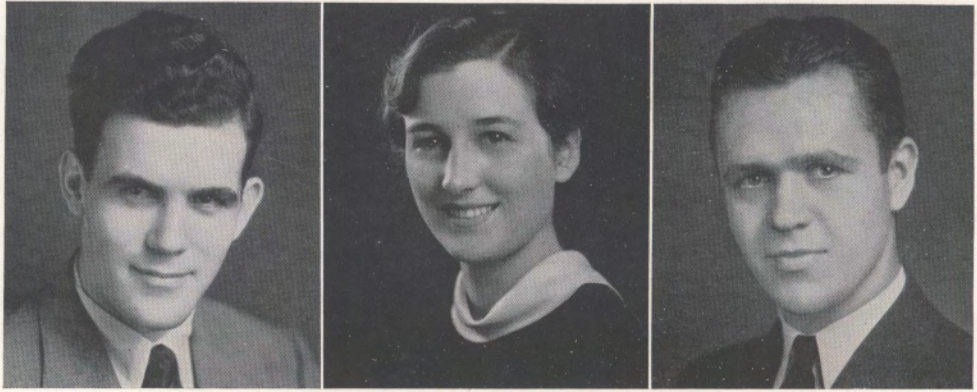


DECEMBER



MISS CATHERINE ROACH



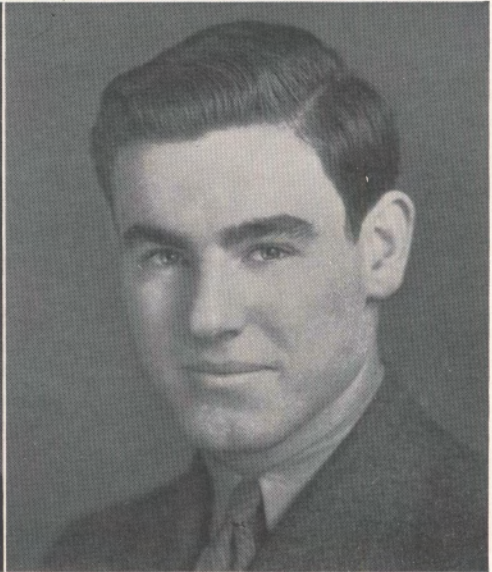


OLDE CENTRE EDITORIAL STAFF

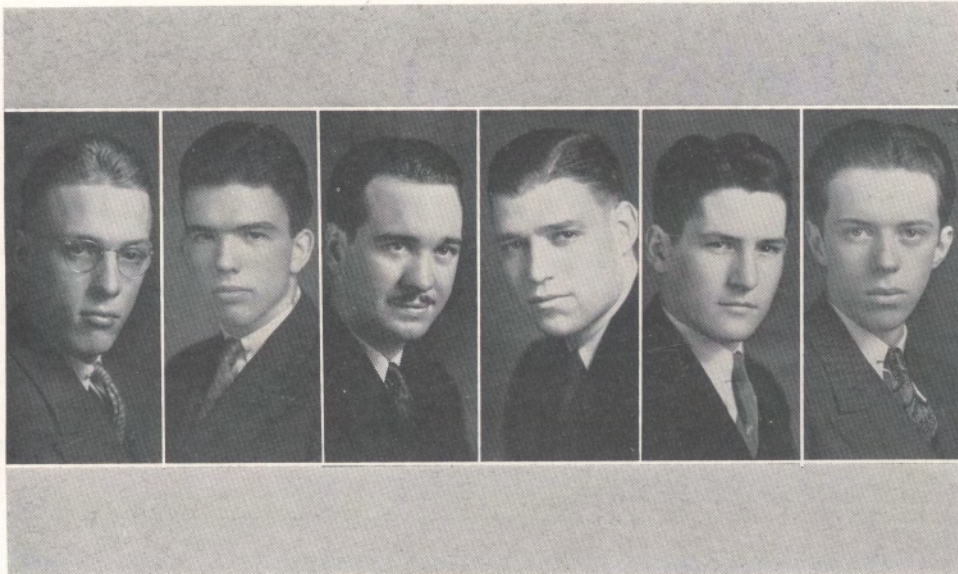
Louis Thoma Griffith, Editor-in-Chief; Helen Boner, Woman's Department Editor; Charles Henry Gartrell, Business Manager.



MABEL EMOGENE COLVIN, Germantown, Kentucky—Athletic Association '30, '31, '32, '33; Glee Club '30, '31, '32, '33; Basketball Team '30, '31, '32; English Club '34.

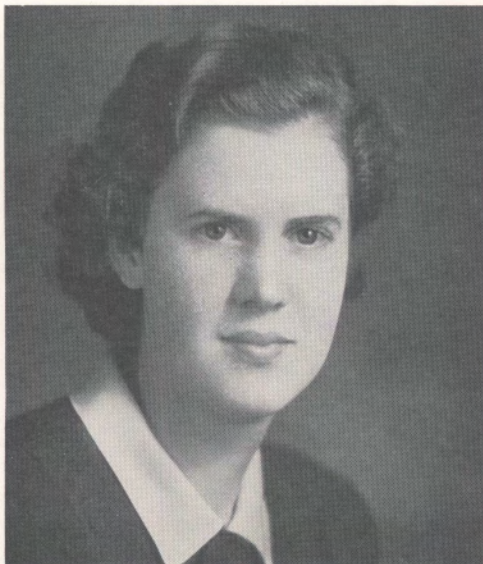


RICHARD HALL CHAMBERLAIN, Louisville, Kentucky— Henry Barrett Boyle Latin Prize '32; Pitkin Club '33, '34; Phi Kappa Tau; Rounde Table.

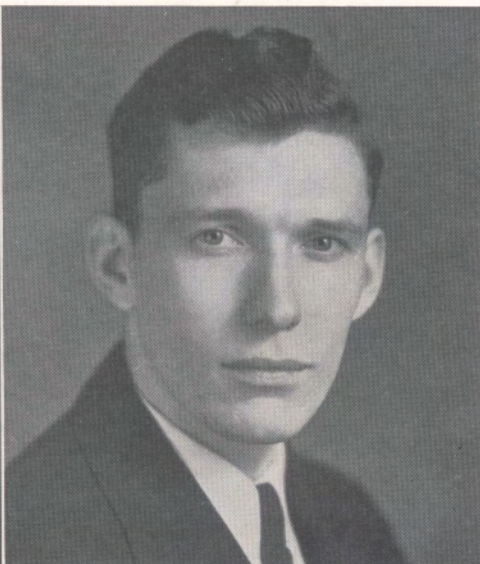


OLDE CENTRE STAFF

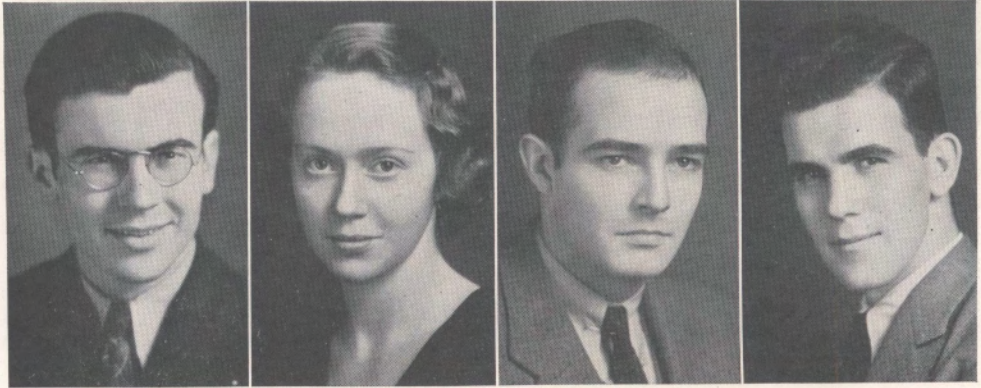
Assistant Editors: Baird, Harbison, Christison; Assistant Business Managers: Hundley, Chamberlain; Datatician: Boyd.



MARY DOROTHY ROLLINS, Pineville, Kentucky—Athletic Association '30, '31, '32, '33, '34, President '34; Basketball Team Captain '33, '34; Freshman Pitkin Club; Spanish Club; Athletic Council '31, '32, '33; Pitkin Club; English Club; Tennis Team '31, '32, '33; Hockey Team '31, '32, '33; Secretary Sophomore Class; International Relations Club; Student Cabinet '33, '34; Secretary-Treasurer of Junior Class.

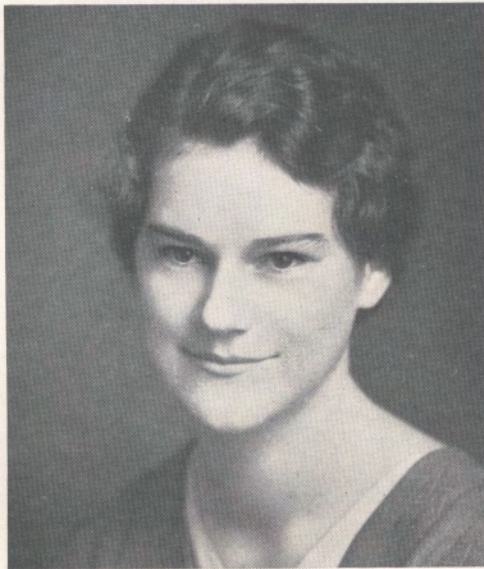


WILLIAM ROYCE LUXFORD, Hamburg, New York—Beta Theta Pi, Treasurer '32, '33; Track '31, '32, '33, '34; Centre College Players; International Relations Club, Treasurer '33, '34.

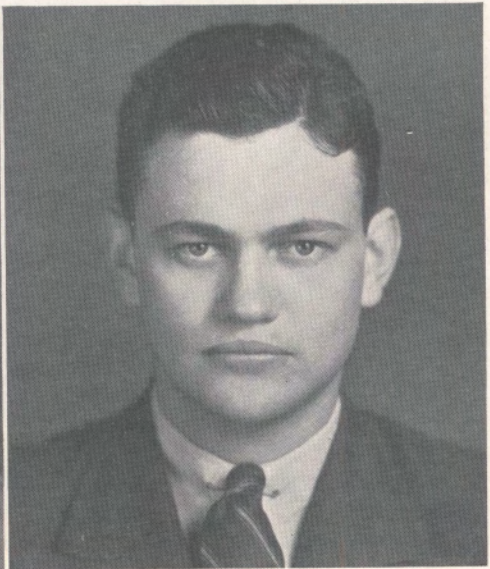


CENTRE COLLEGE CENTO EDITORIAL STAFF

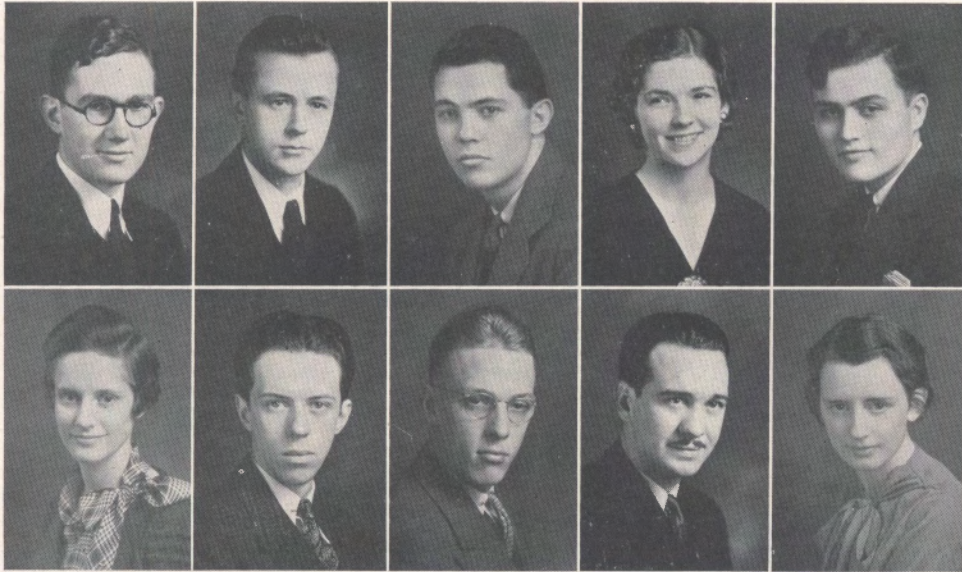
Wesley Carty, Editor-in-Chief; Ann Frances Pennington, Woman's Department Editor; Montgomery Hicks, Business Manager; Louis T. Griffith, Assistant Editor.



ISABELLE PENNINGTON WALKER, Stanford, Kentucky—Rounde Table.



JOHN CALHOUN ROBINSON, JR., Danville, Kentucky—Sigma Chi; Deinologian Literary Society; English Club; International Relations Club.

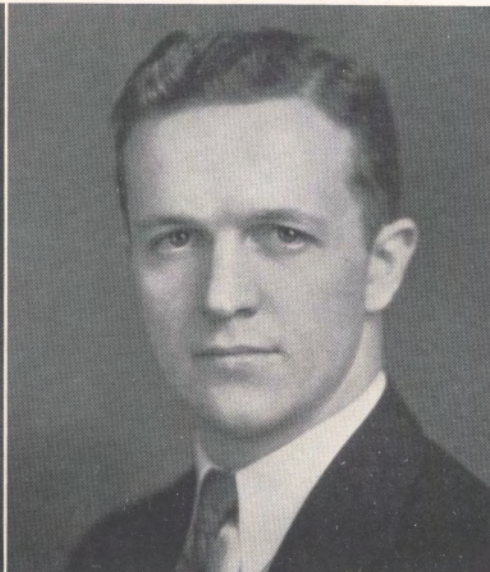


CENTRE COLLEGE CENTO STAFF

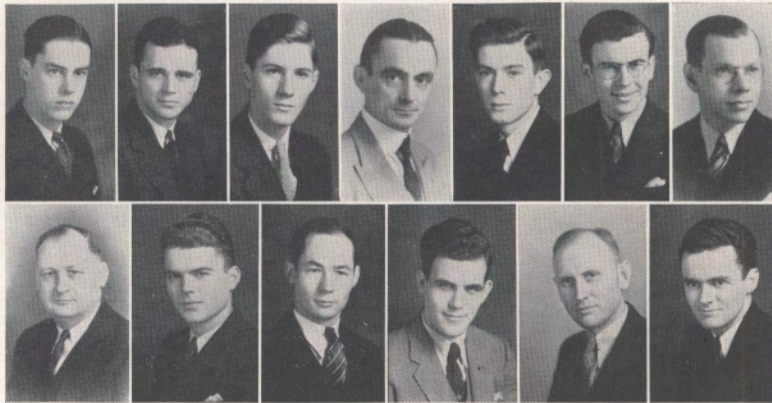
Top Row: McMullen, Piatt, Powell, Bigham, Sanders.
 Second Row: Stith, Boyd, Baird, Christison, Guffey.



BESSIE CORNELIA STARLING, Pine Level, North Carolina—Transfer Lees McRae College; Athletic Association '32, '33; Basketball Team '32, '33; Hockey Team '32, '33; Glee Club '32, '33; Athletic Council '33, '34; Bowling Captain '34; Student Cabinet '34; German Club.



BISHOP WARD HUDGINS, Amarillo, Texas—Football '30, '31, '32; Track '31, '32; Pitkin Club '33; Centre College Christian Association '33; Spanish Club '34; English Club '34.

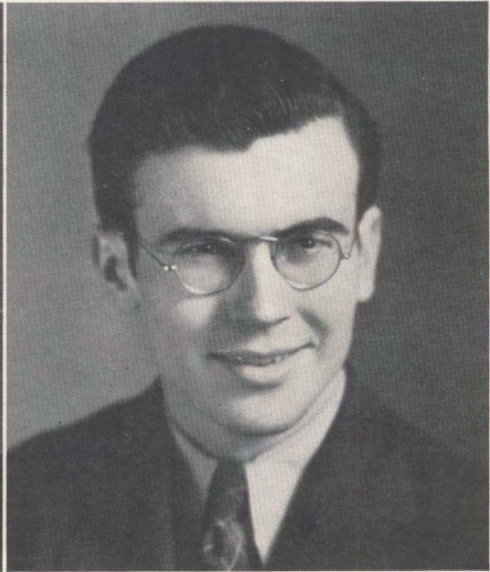


OMICRON DELTA KAPPA

Top Row: Read, Hendren, Jackson, Munn, Nichols, Carty, Cook.
 Second Row: Porter, Dodd, Jones, Griffith, Hewlett, Rowell, President.



EMILY DOWNTON, St. Louis, Missouri—Athletic Association '30, '31; English Club '32, '33, '34; German Club '32, '33; Pitkin Club '33, '34; President Senior Class; Cotillion Club; International Relations Club.



WESLEY CARTY, Brooklyn, New York—President Phi Kappa Tau '33; Pitkin Club; Cento Staff, Editor-in-Chief '34; Centre College Magazine; Ernst Debate Prize '32, '33; Debating Team '31, '32, '33, '34; Deinologian Literary Society; Interfraternity Council '33; Student Council '33; Pi Kappa Delta, President '34; Omicron Delta Kappa; Winner Peace Oratorical Contest '34; Winner Education Oratorical Contest '34; Winner February Oratorical Contest '34; International Relations Club; Keys Honorary Fraternity.

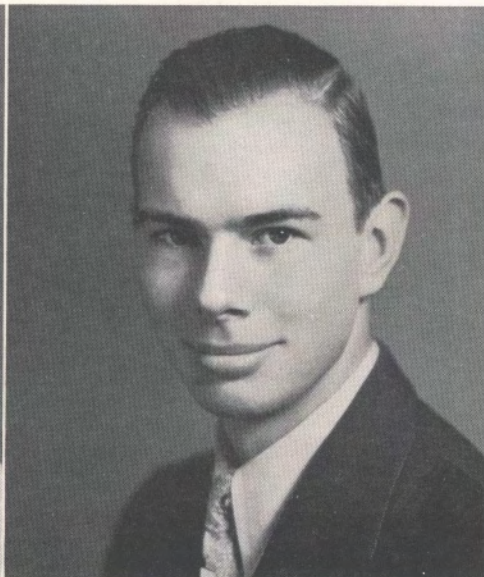


YE ROUNDE TABLE

Top Row: Burley, Chamberlain, Rainey, Stith, Dodd, Van Winkle, Crenshaw.
 Second Row: Carter, Record, Hewlett, Nichols, Beazley, Jackson.
 Third Row: Woodson, Damron, C. B. McMullen, H. McMullen, Read, Marcum, Roach.



MARY CATHERINE ROACH, Louisville, Kentucky—Glee Club '31, '32; Athletic Association; President Freshman Pitkin Club; President Freshman Class; French Club; English Club '30, '32, '33, '34; Hockey Team; Athletic Council '32, '33; Pitkin Club '33, '34, President '34; Centre College Players; Rounde Table; Student Cabinet.



GEORGE ALBERT BERRYMAN, Ashland, Kansas—Glee Club '33, '34; English Club; Male Quartet '33, '34; Sigma Alpha Epsilon; Colonel on Staff of Governor Ruby Lafoon.



KEYS FRATERNITY

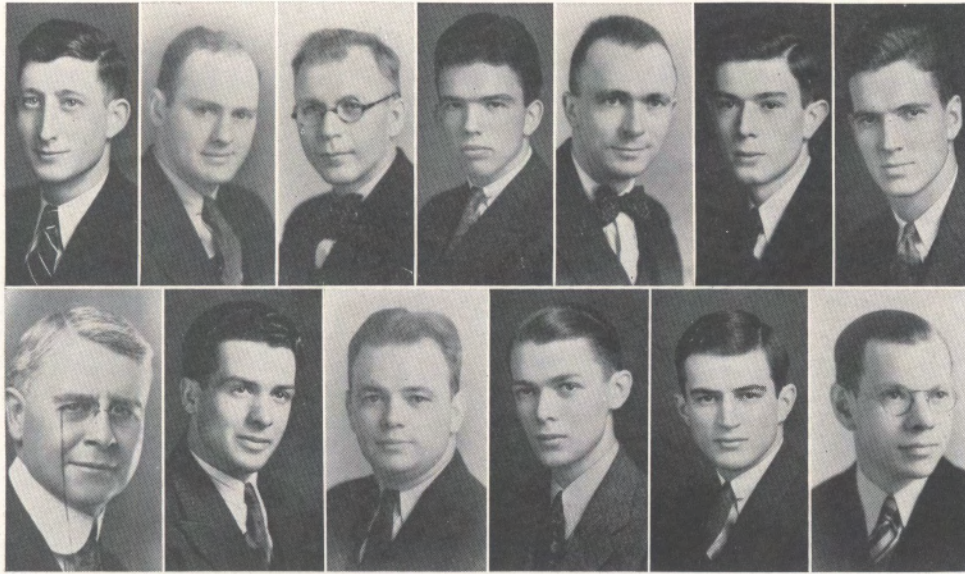
Top Row: Rowell, Hendren, Chowning, Nichols, Wycoff.
 Second Row: Mercier, Litsey, Minor, Carty, Calvert.



ANNA BELL THURMOND, Danville, Kentucky.

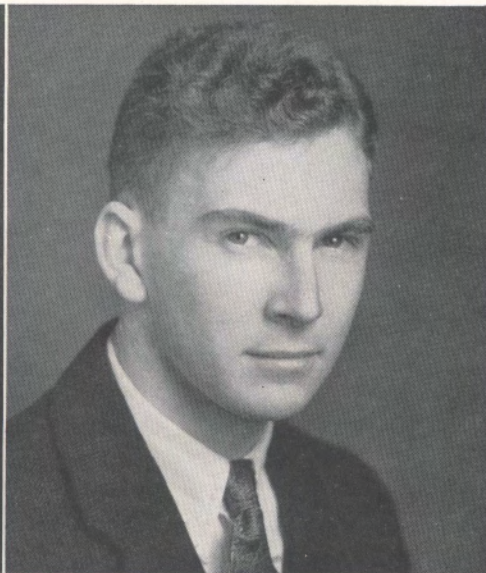
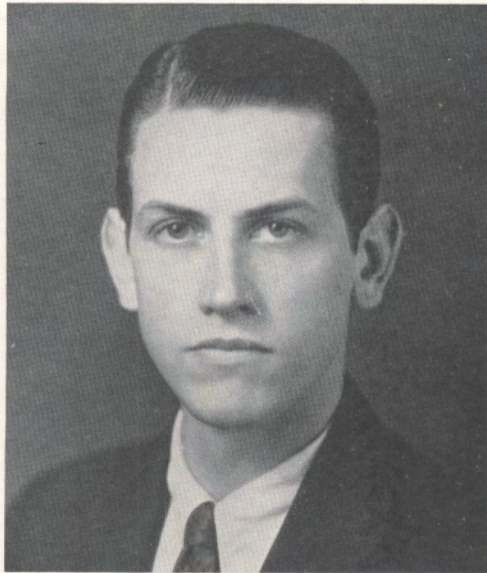


MONTGOMERY HICKS, Kenilworth, Illinois—
 Business Manager Cento '33, '34.



CHI BETA PHI

Top Row: Johnston, Cassaday, Biles, Harbison, Rush, Nichols, Jackson.
 Second Row: Rainey, Crenshaw, Bottom, Hendrickson, Pulliam, Cook.



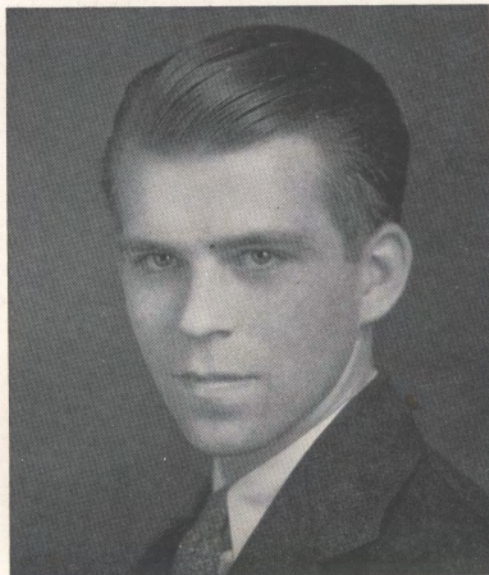
ROBERT BRISCOE LEWIS, Parkville, Kentucky—Mathematics Prize '33; International Relations Club '34.

DUKE MARVIN GODBEY, Perryville, Kentucky.

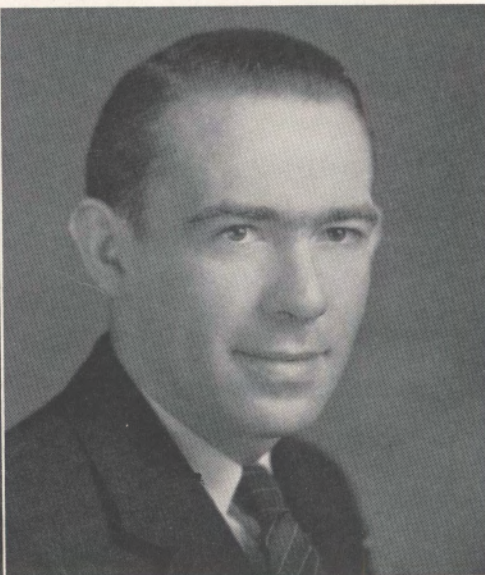


CENTRE MAJORS ORCHESTRA

Carrington, Vocalist; Winfrey, Trumpet; Shipley, Trombone; McGee, Saxophone; Ford, Saxophone; Meadows, Saxophone; Horky, Bass; Roberts, Guitar; Edwards, Piano; O. Wisner, Drums.



CARL COLEMAN ELLIS, Danville, Kentucky—
Phi Kappa Tau.



STEPHEN RUSSELL ELLIS, Danville, Kentucky—
Phi Kappa Tau.

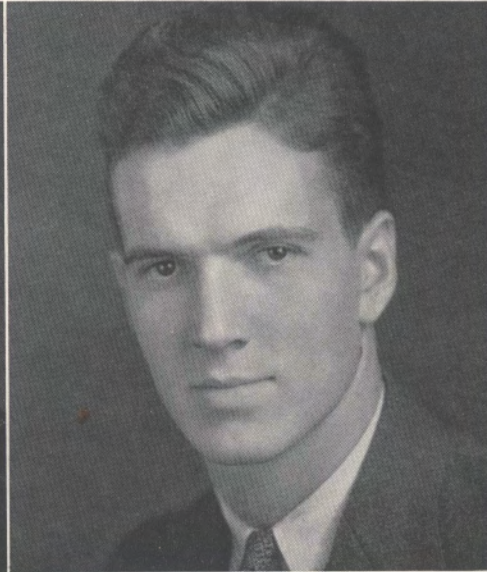


CENTRE COLLEGE MALE QUARTET

George Berryman, Second Bass; Owen Osborne, First Bass; C. C. Calvert, Second Tenor; Louis T. Griffith, First Tenor.



JOHN RANDOLPH KITCHEN, Ashland, Kentucky—Sigma Alpha Epsilon; Transfer, University of Michigan.

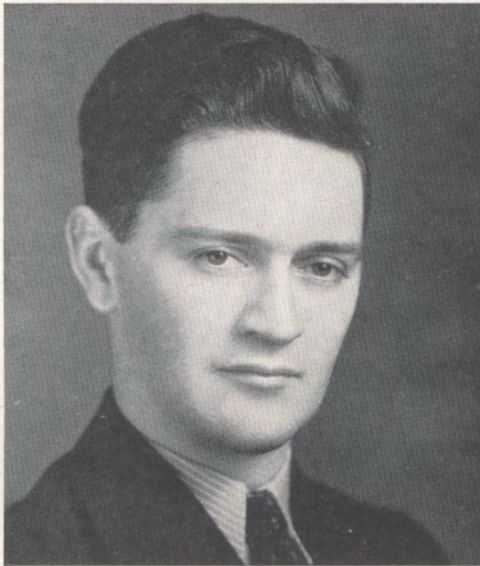


CHRISMAN SPEARS JACKSON, Danville, Kentucky—Sigma Chi; Chi Beta Phi, President '32, '33; International Relations Club, President '33, '34; Interfraternity Council '32, '33; Class Historian '30, '31; Class Vice-President '32, '33; Deinologian Literary Society.



SENIOR PITKIN CLUB

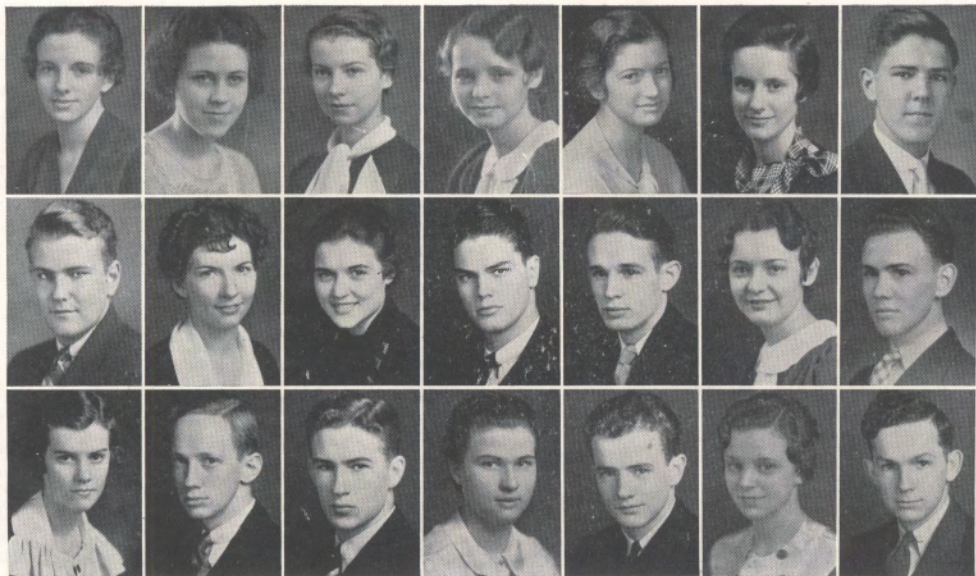
Top Row: Griffith, McMullen, Chowning, Roberts, Andres, Crenshaw, Blanc, Sweets, Check, Wood, Marcum, Treasurer.
 Second Row: Hewlett, Baughman, Chamberlain, Bass, Check, Van Winkle, Dodd, Downton, Ensminger, Hudgins, Burley.
 Third Row: Chamberlain, Young, Jackson, Sweeney, Haber, Read, Stith, Harbison, Metcalf, Rollins, Pennington.
 Catherine Roach, President (Not in Picture).



JAMES LEE MURPHY, JR., Danville, Kentucky
 —Phi Delta Theta; Golf Team '34.

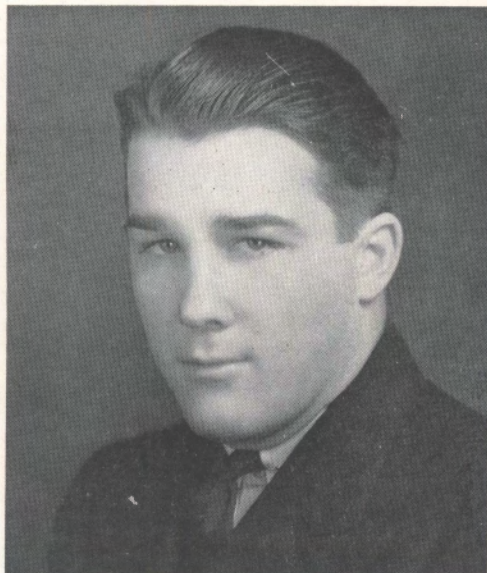


CHARLES CALVIN DARNALL, Carlisle, Kentucky—Kappa Alpha; Student Library Assistant.



FRESHMAN PITKIN CLUB

Top Row: Cox, Van Winkle, Thompson, M. Graham, McMullen, Stith, Young.
 Second Row: Kahn, Bosley, Coleman, Davidson, Wallace, I. Graham, Dickel, President.
 Third Row: Nichols, Sanders, Morton, Turck, Puryear, Hertlein, Walker.



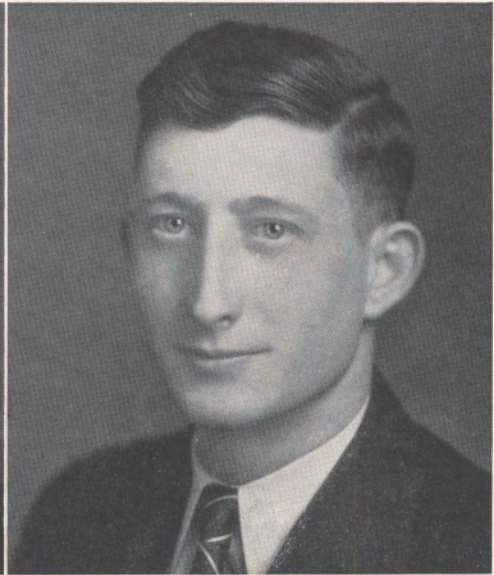
ROY WIGHAM ARNOLD, Danville, Kentucky—
 Sigma Chi; Freshman Football.

JOHN WENDELL WATT, Anchorage, Kentucky.



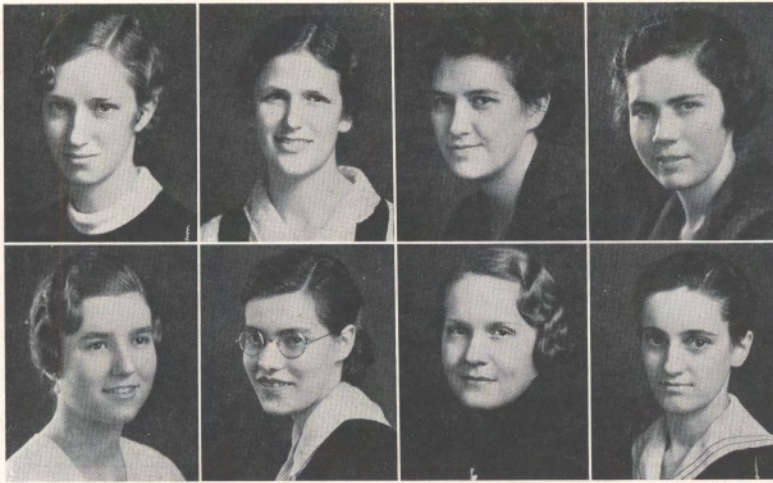
DEINOLOGIAN LITERARY SOCIETY

Top Row: W. B. Young, P. Young, Childress, Wallace, Metcalf, Sanders.
 Second Row: Cheek, Puryear, Walker, President; Hazelrigg, Damron.
 Third Row: Piatt, Boyd, Reid, Chowning, Cochran, Powell.



MARCUS ALLEN COYLE, Springfield, Kentucky.

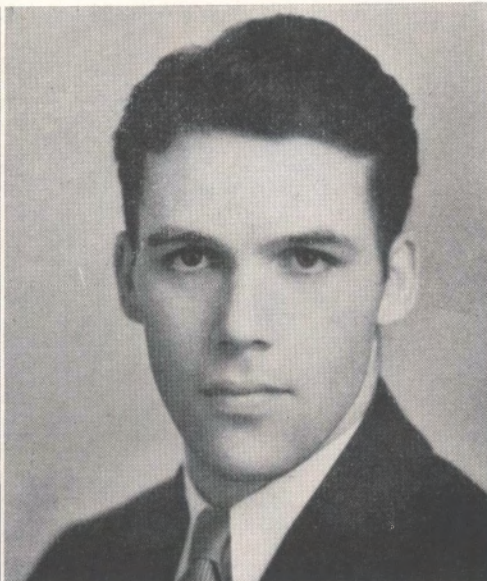
PAUL MORTON JOHNSTON, Greenville, Kentucky.



STUDENT COUNCIL WOMAN'S DEPARTMENT
Top Row: Ross, Roach, Andres, Van Winkle, President.
Second Row: Stith, Burley, Bass, Marcum.



JOHN WILSON SWAIN, Eminence, Kentucky.

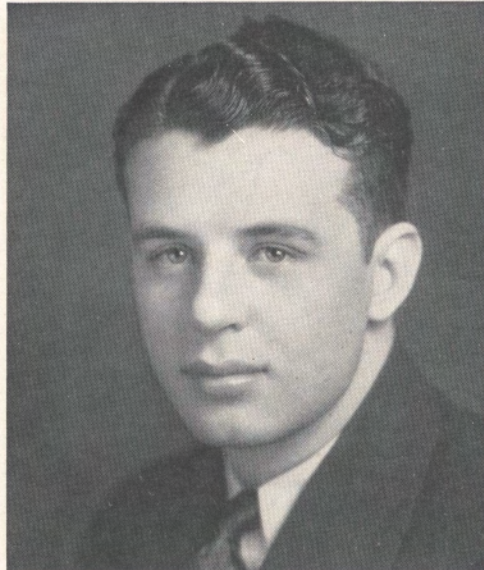


ALBERT JACKSON MEADE, Ashland, Kentucky.



CENTRE COLLEGE PLAYERS

Top Row: Piatt, Meyer, Carty, Turck, Jackson, Gartrell, Roach.
 Second Row: Wood, Metcalf, President; Harbison, Luxford, Stallard, Roy.
 Third Row: Boyd, Read, Sterrett, Director; Shelton, Trotter, Stage Manager; Rowell.



JOHN THURMAN ANDERSON, Bowling Green, Kentucky—Football '30, '31, '32, '33; Track '30, '31, '32, '33.



ARCH PULLIAM, IN "TO THE LADIES"

Make-up by Eugene Roy

Engagements of 1934 Spring Road Tour of "To The Ladies":

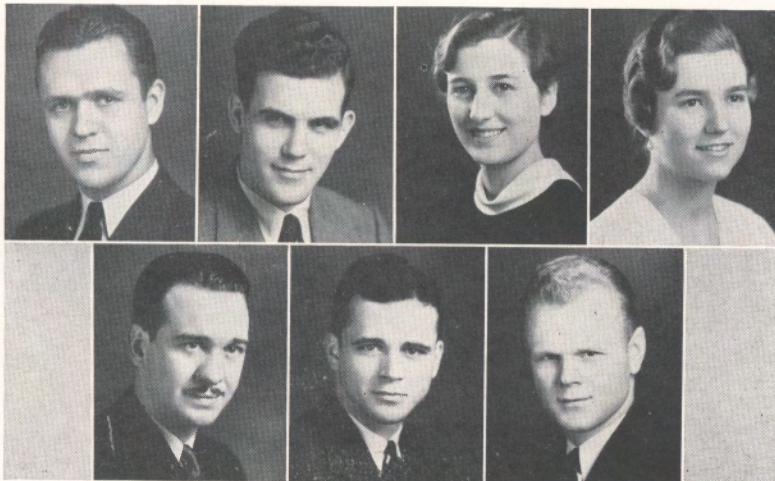
Danville, Ky., March 27.

Lebanon, Ky., April 9.

Bardstown, Ky., April 10.

Lancaster, Ky., April 12.

Middlesboro, Ky., April 13.



JUNIORS

Charles H. Gartrell, Louis T. Griffith, Helen Boner, Frances Stith, William H. Christison, Elmer Hendren, Alton J. Eline.

(Junior Biographies Pages 117-119)



SCENE FROM "ICE BOUND"

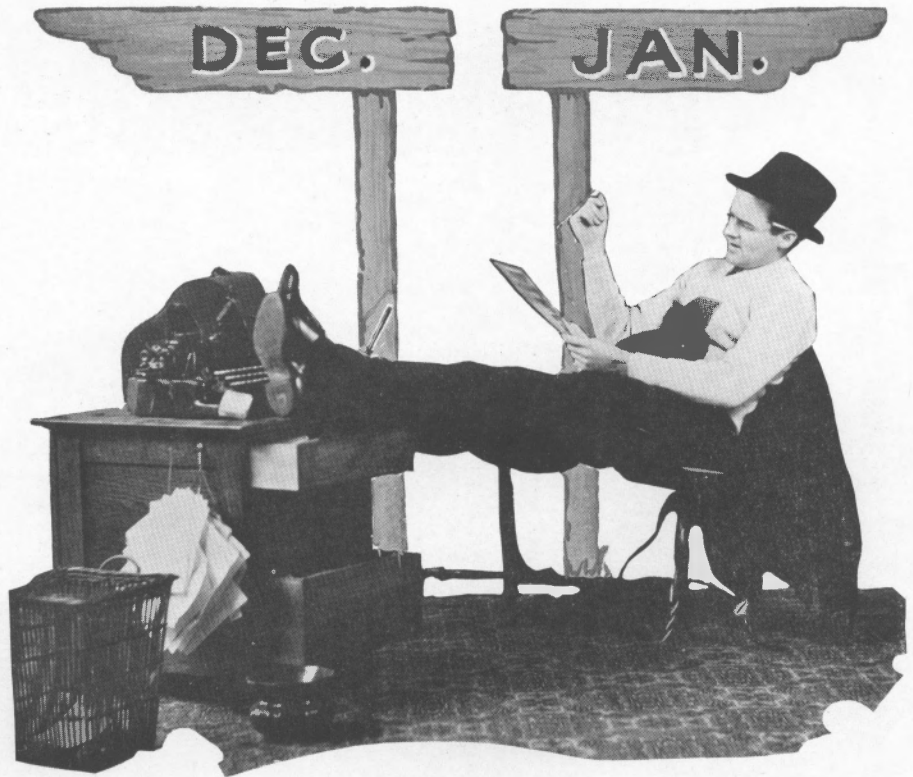
CENTRE COLLEGE PLAYERS SEASON 1933-34

Fall Production, "Ice Bound."

Spring Production, "To The Ladies."

Carnival Production, "Love In Livery."





FRED ROWELL



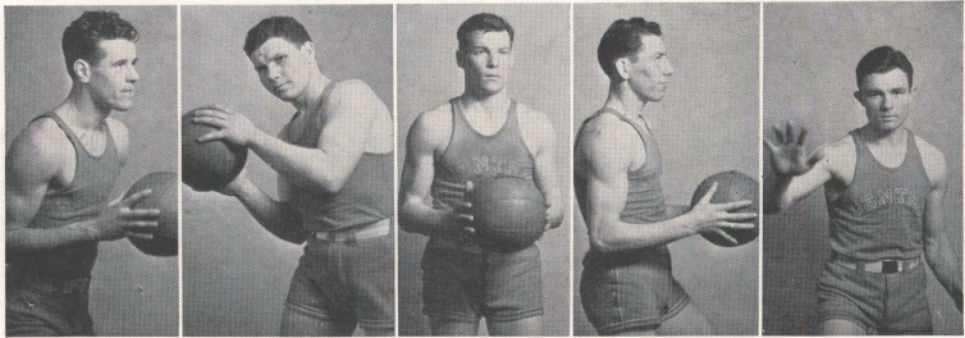


JANUARY



MISS ELLEN VAN WINKLE





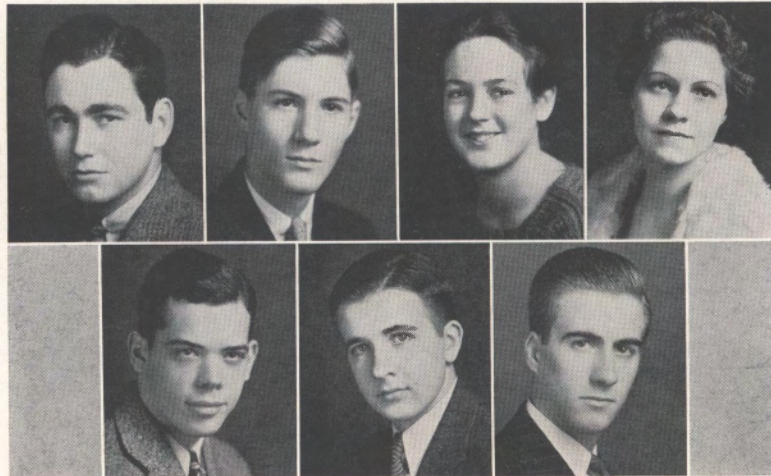
VARSIY BASKETBALL

Hawthorne, Captain; Converse, Carpenter, Bartlett, Ensminger.

RESUME OF 1933-34 VARSITY BASKETBALL

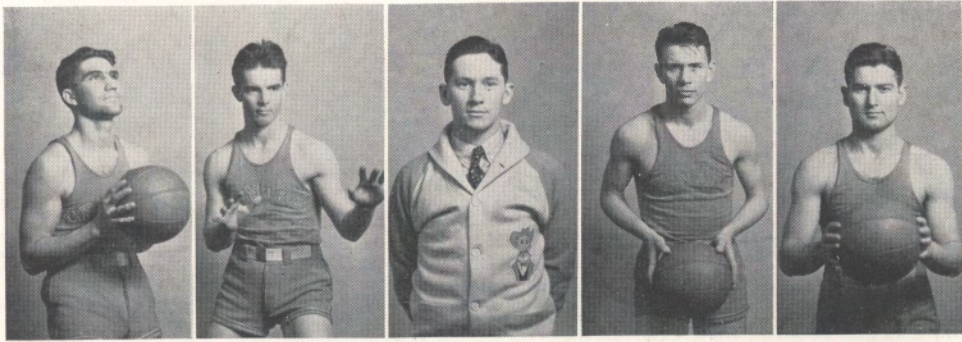
Under the leadership of Captain Worley Hawthorne, the Centre College Basketball Squad for 1933-34 experienced the most unusual season a Centre team has had in years. The team, composed of Morey, Carpenter, Jones, Barksdale, Bartlett, Ensminger, Carrington, Kidd, Converse, and Captain Hawthorne, engaged in twelve contests during the season and emerged victor in only one. Six of the twelve games were dropped by the slight margin of four points or less. The Colonels collected a total of 340 points against 430 made by opponents, which would indicate that the season was not as unsuccessful as the games lost would lead one to believe.

Participating in only one game in the State S. I. A. A. Tournament held in Louisville, the Colonels were defeated by Kentucky Wesleyan College 23 to 14.



JUNIORS

Clemmons L. Knight, Richard G. Jackson, Mary Shackelford, Mary V. Wood, John P. Frank, George G. Bedinger, William B. Young.

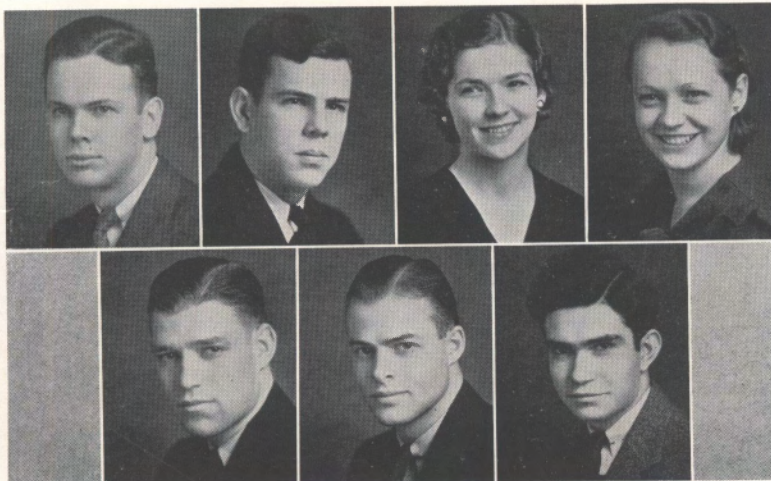


VARSIITY BASKETBALL

Barksdale, Carrington, Nicholson, Manager; Kidd, Morey.

The 1933-34 schedule follows with scores of each contest:

- University of Louisville 30—Centre 26.
- Berea 48—Centre 25.
- Xavier 59—Centre 15.
- Transylvania 34—Centre 31.
- Morehead 49—Centre 28.
- University of Louisville 36—Centre 23.
- Wesleyan 31—Centre 29.
- Georgetown 30—Centre 28.
- Morehead 30—Centre 28.
- Kentucky Wesleyan 37—Centre 26.
- Transylvania 34—Centre 37.
- Georgetown 30—Centre 29.
- S. I. A. A. Tournament: Wesleyan 23—Centre 14.



JUNIORS

George Bohon, John L. Durham, Suella J. Bigham, Jetta L. Huffman, Robert L. Hundley,
 Randolph R. Fishback, George G. Beasley.



FRESHMAN BASKETBALL TEAM

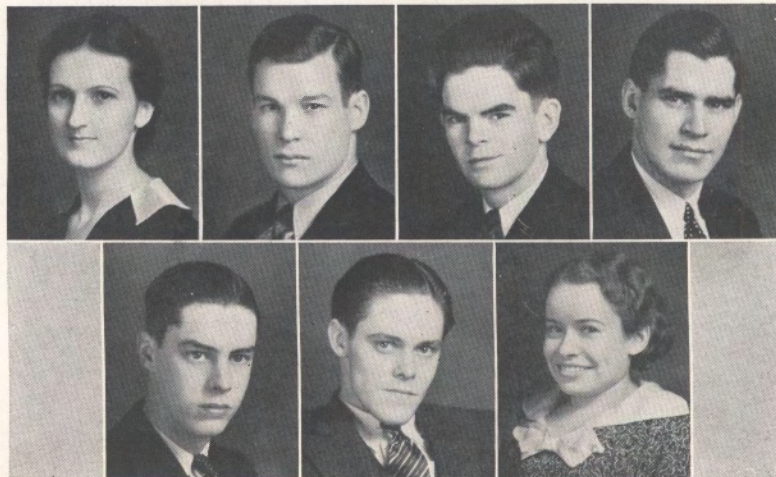
First Row, Left to Right: Fitzpatrick, Tierney, Cooper, Sullivan, May, Campbell, Jasper.

Second Row: Winston, Moreman, Childress, Lowe, Meyer, Purdom.

Third Row: Burrus Munn, Freshman Coach; Edwin Kubale, Varsity Coach.

It is indeed quite unusual to state that the 1933 edition of Lieutenants came through a thirteen game season with but one loss. It is even more unusual to state that the one game dropped was the one varsity game taken by their elders, the Colonels, in a dual engagement with the Pioneers of Transylvania.

From the '33 Frosh ranks are graduated such men as Sullivan, Fitzpatrick, Campbell, May, Jasper, Tierney and other excellent hardwood performers who will make Centre's varsity hard to handle in the '34 season.



JUNIORS

Frances L. Brownlee, Charles M. Carpenter, James R. Ford, Berry L. Litsey, Charles R. Read, Gordon T. Smith, Maude Sutton.

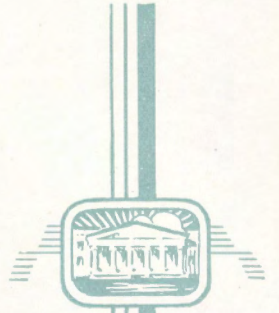


TOM JONES



Lake Chenault Bridge



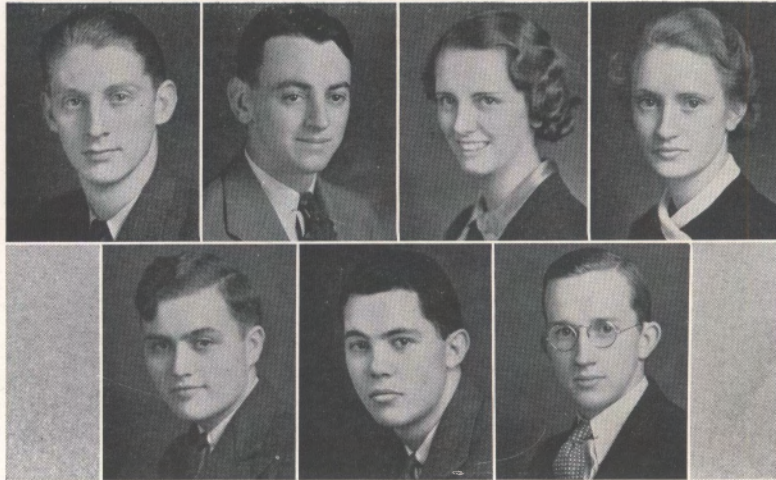


FEBRUARY



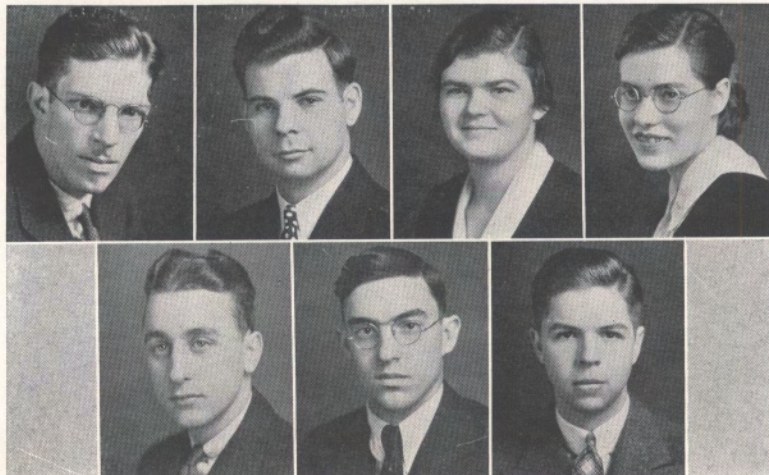
MISS IRENE SYCK





JUNIORS

Weston G. Allen, James H. Mann, Lilly Stamper, Ethel Whitehouse, Henry W. Sanders, Walter B. Powell, Foster M. Sweets.



JUNIORS

Frederick P. Spath, David H. Bassett, Frances L. Smith, Ferol M. Burley, Charles W. Metcalf, Woodrow H. Damron, John S. Willim.



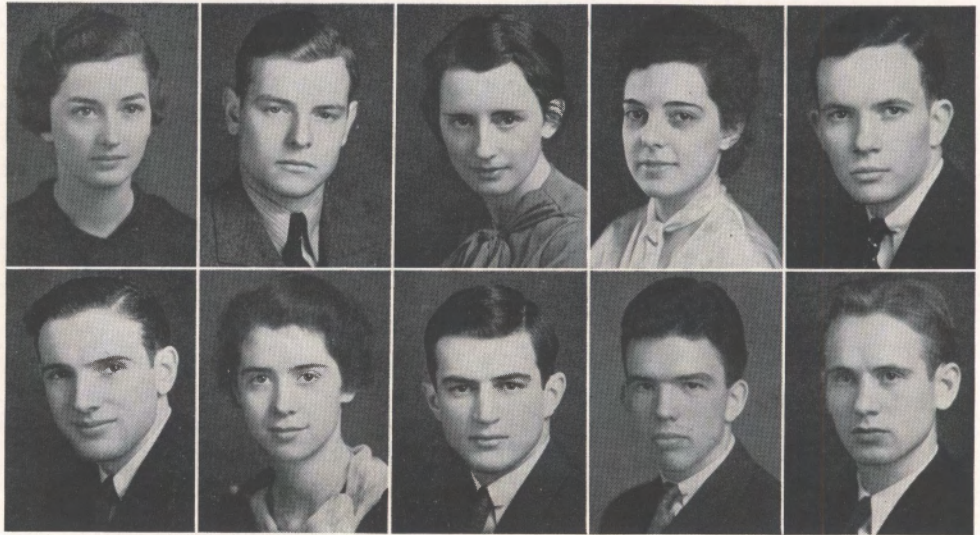
JUNIORS

William G. Christian, William I. Fryer, Barbara Daugherty, Vermell Wise, Hershel R. Giles,
John W. Marsee, Charles H. McMullen.



JUNIORS

Andrew G. Rotenberry, Logan M. Cheek, Allen B. Edwards, Hugh M. Jefferson, Harold S.
Mercier, Robert S. Piatt.



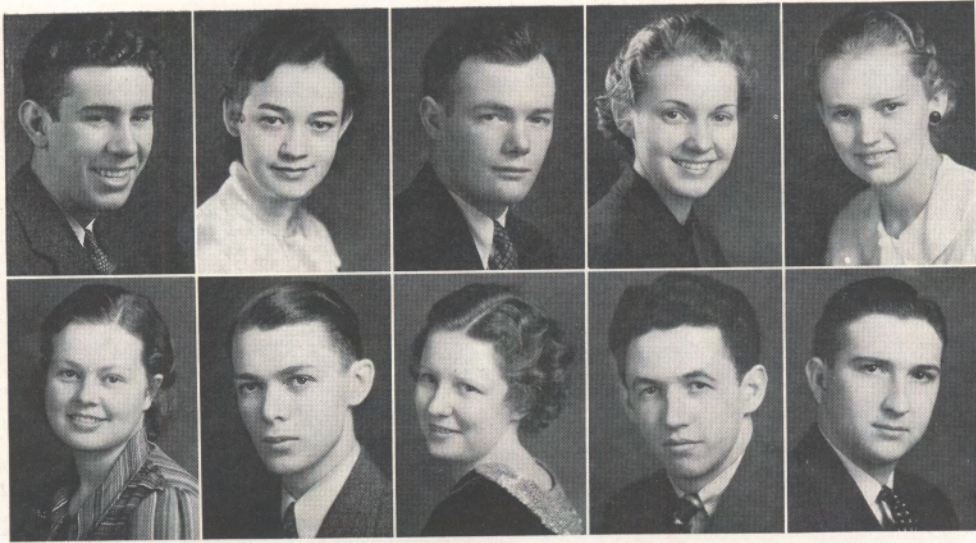
SOPHOMORES

Roberta Cash Baughman, David Warren Roberts, Kathleen Georgetta Guffey, Katherine Palis Blanc, Horace January Cochran.
William Bodner, Mary Handy Ensminger, Arch Pulliam, Jr., Stanley P. Harbison, Glenn Gordon Flynn.



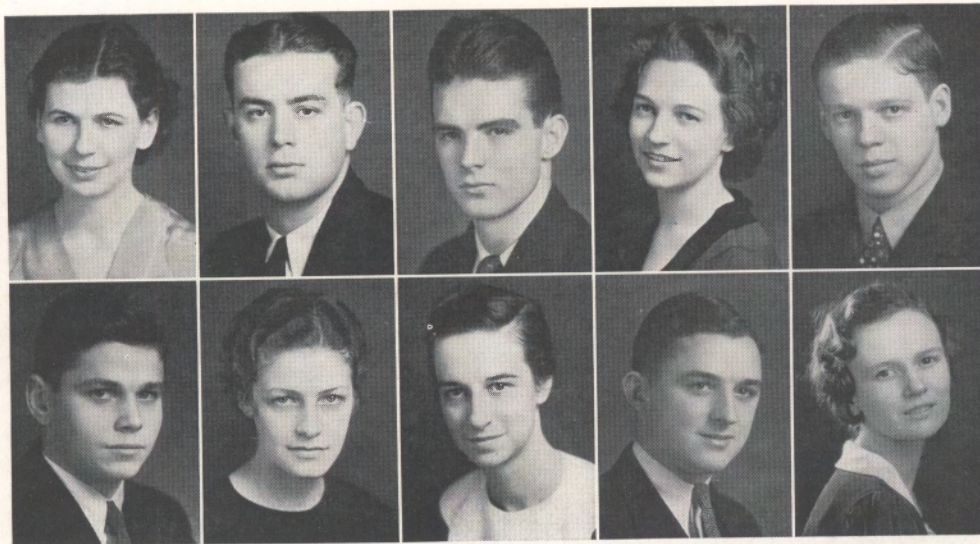
SOPHOMORES

Eugene Lynn Roy, Murl Joseph Gore, Inez Lyon, John William Bell, Anne Frances Hamilton.
Ralph Elkins Ellis, Anna Walters, John Owsley Reid, Martha Beth Shelton, Jessie Holcomb Gibbs.



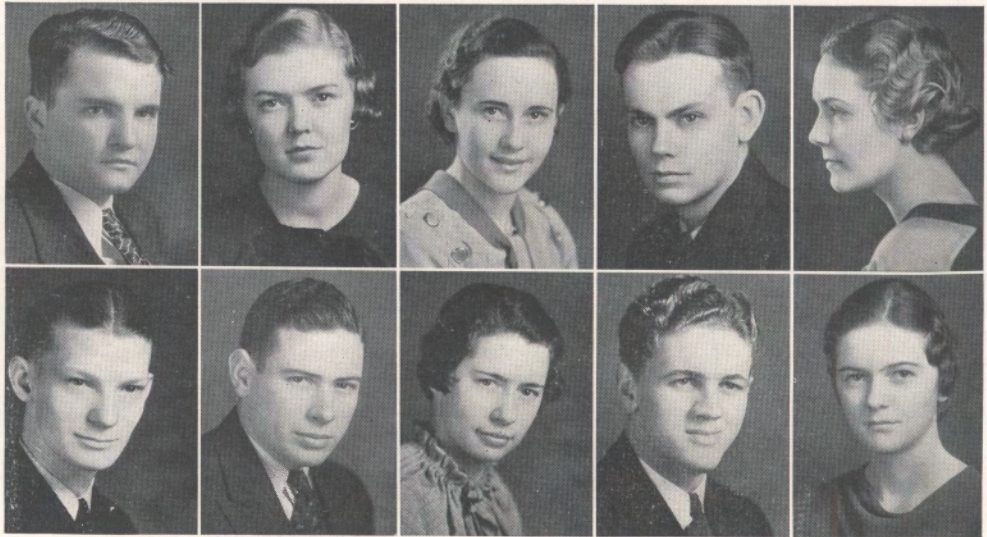
SOPHOMORES

Richard Henderson Udlock, Mary Ellen Haber, William Stewart Kennedy, Nancy Marie Crockett, Betty Adler.
 Margaret Lucille Gabbhart, Glenn Gordon Hendrickson, Frances Virginia Frymire, David Wallace Lamb, Hiram G. Williamson.



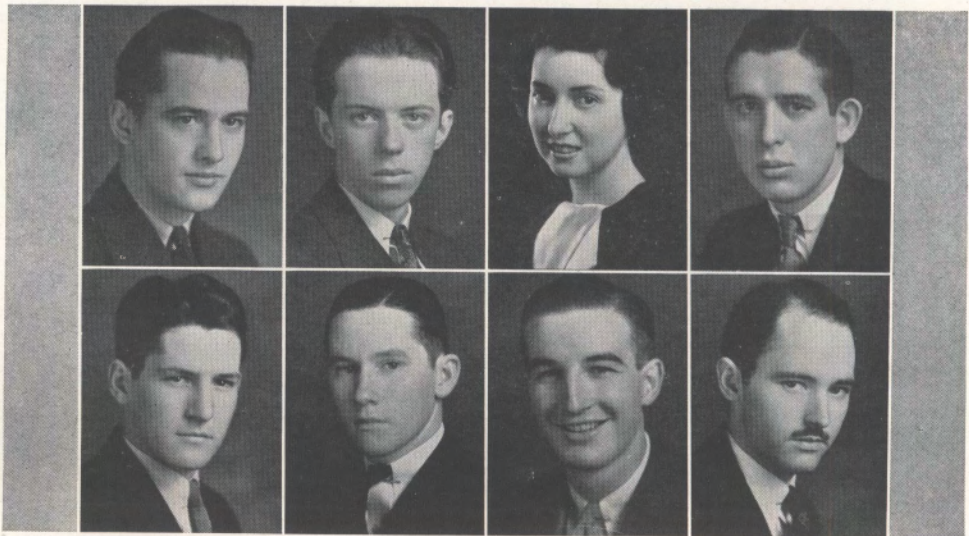
SOPHOMORES

Mary Manelle Stallard, Gyrlee Thomas Ballard, Jack Burbridge Carrington, Lillie Terrell Wood, Isaac James Heizer.
 Frank Robards Whitman, Mary Elizabeth Hamilton, Mary Frasier Kimbrough, Charles Clinton Calvert, Judith Josephine Lawson.



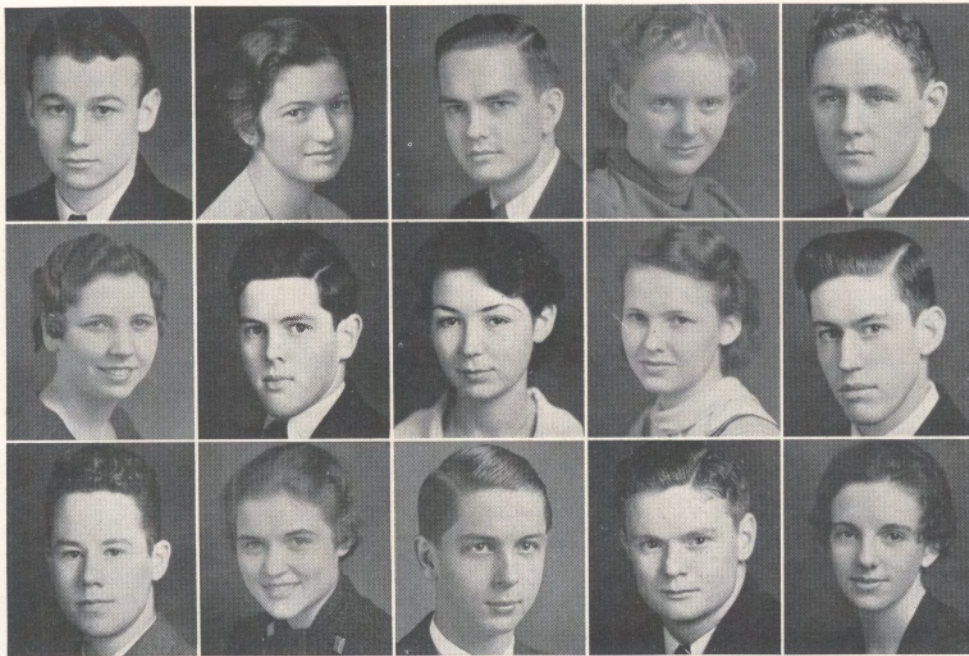
SOPHOMORES

J. B. Robertson, Nevelyn Russell Parks, Koreen Travis Alcock, Robert Lee Shirley, Beatrice Lucille Fehn.
 Garred Oliver Cline, Charles Henry Asher, Geneva May Smith, Philip Baxter Goodrich, Pauline Roberta Wilmott.



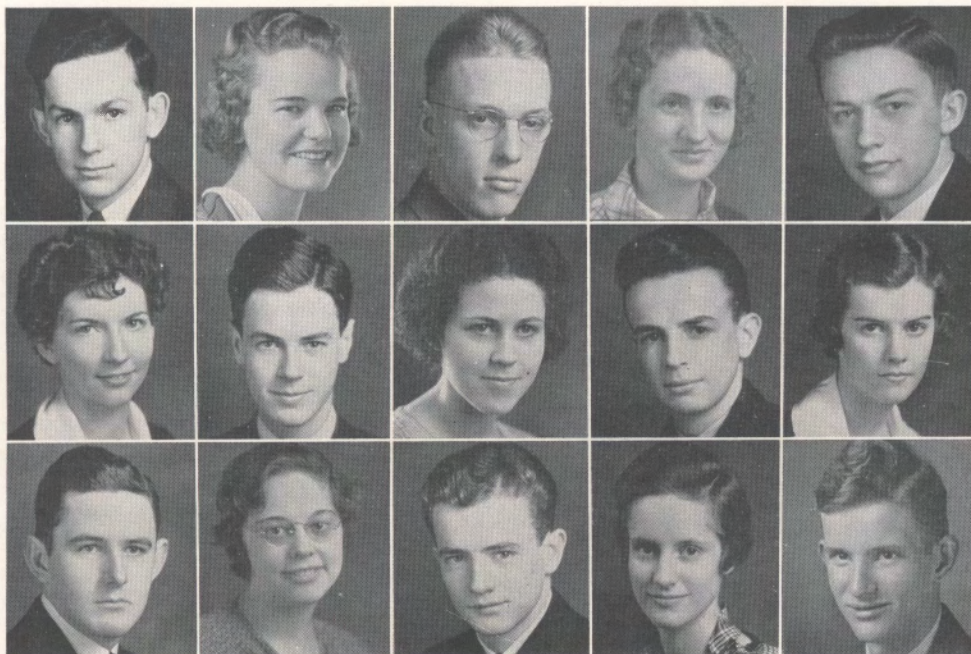
SOPHOMORES

Joseph Wycoff, Leslie R. Boyd, Elizabeth Kagin, Jackson Bray.
 Woodrow Chamberlain, Rush Nicholson, Hugh M. Chowning, Russell Wood.



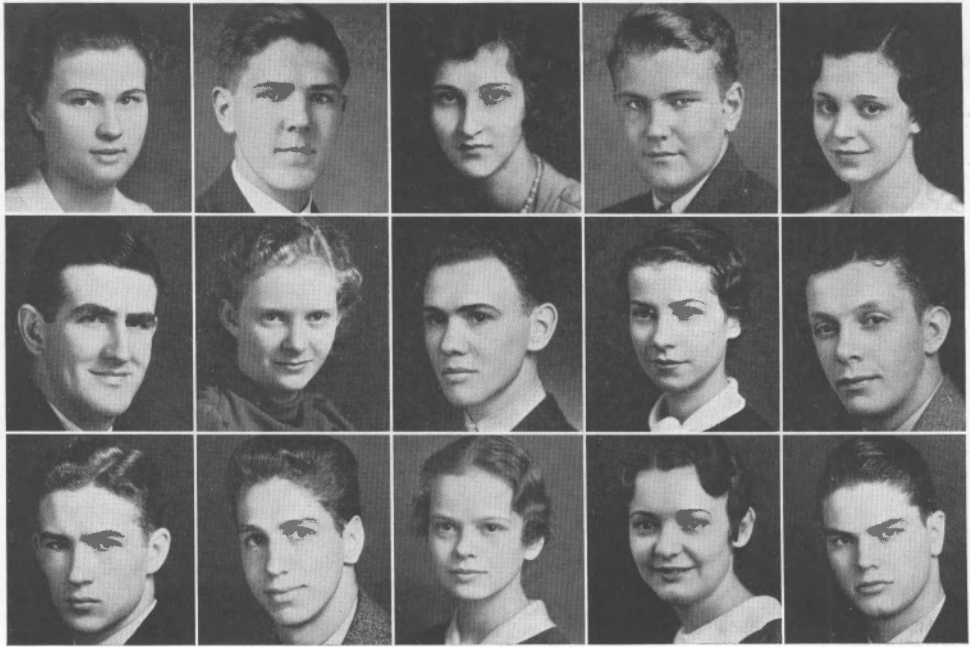
FRESHMEN

Robert Bryant Jasper, Sara Catherine McMullen, L. C. Rice, Jr., Ione Snider, Howard Price Hunt.
 Flora Louise Juett, Harry Claiborne Winston, Ruth Coyle Rogers, Elizabeth Lee Vallandingham, Alexander H. Adams.
 Frederic Kelley Howard, Nancy Lou Coleman, William Guy Lockwood, John William Willis, Mary Quin Cox.



FRESHMEN

Harold William Walker, Florrie Garrard Ford, William Henry Baird, Margaret Broaddus, Leslie M. Reid.
 Lillian Forsythe Bosley, G. Caldwell Russell, Louise Van Winkle, Charles Tabb Hazelrigg, Mary Bush Nichols.
 Edward Howard Bean, Lydia Catherine Tucker, Robert Emmett Puryear, Elnor Elsie Stith, Willis Lee Vallandingham.



FRESHMEN

Viola Turck, Edward Preston Young, Mary Edna Carter, Harold Heyman Kahn, June Hertlein.
 Louis George Meyer, Ione Snider, Joseph Dickel, Kathryn Thompson, Henry F. Childress, Jr.
 Harold Murdock Morton, Henry Riggs Sullivan, Alice Webb Pilkington, Irene Wilson Graham,
 Benjamin G. Davidson.

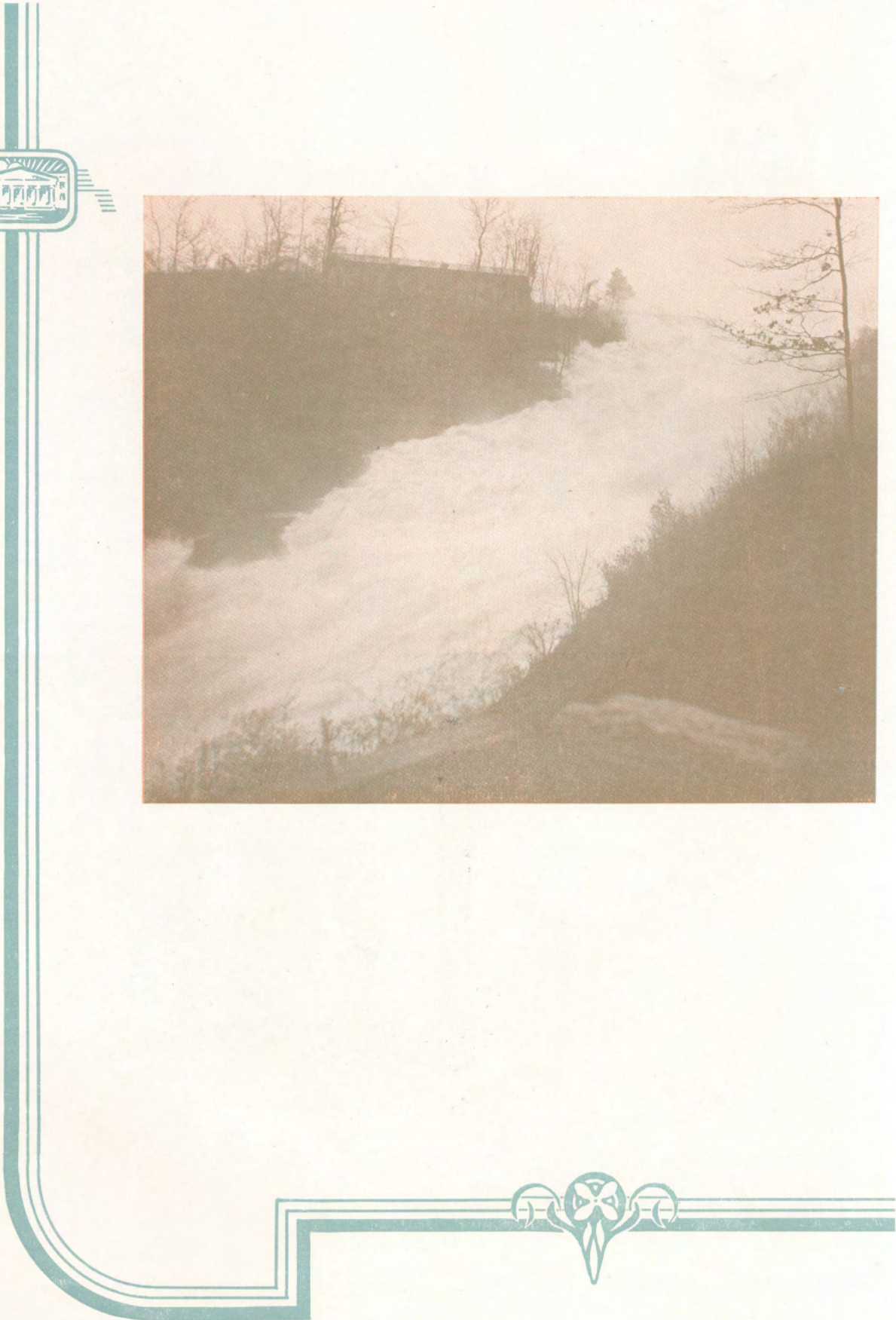


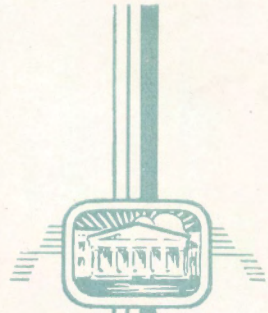
FRESHMEN

Claude C. Purdom, Ruth Daugherty, Irene Dickerson, Irene Graham, Roberta McMillan.
 Margaret T. Chatham, Daniel Sanders, Wilma H. James, Joseph Wallace.



WALTER B. POWELL



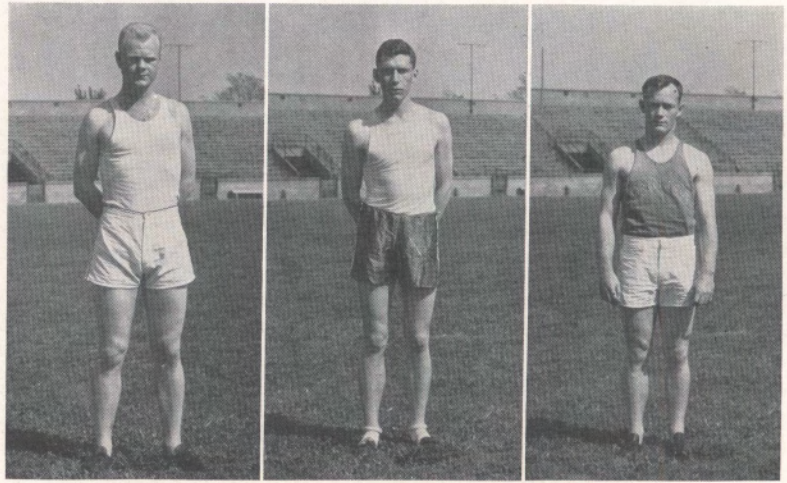


MARCH



MISS ANNA ELISA ANDRES





Eline

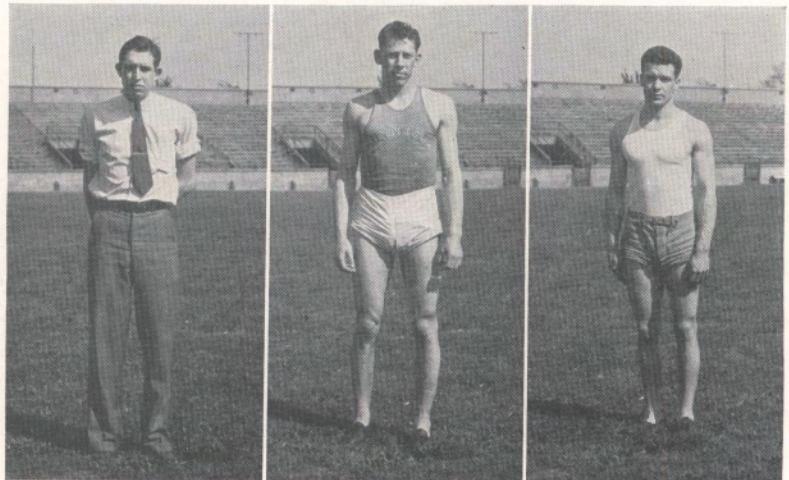
Luxford, Captain

Kennedy

TRACK

Centre opened its 1934 track season with the University of Louisville at Louisville. The Colonels were crippled, having several men suffering from football injuries sustained in the spring practice which preceded the track season; however, despite these handicaps, Centre won the meet, with Bartlett, Ensminger and Long showing up well in all events in which they participated. The final score was Centre 62; University of Louisville 55.

Centre's second meet, a triangular affair with Berea, Eastern and Centre competing, was held on Cheek Field in Danville. Because of the keen rivalry existing among the schools, the

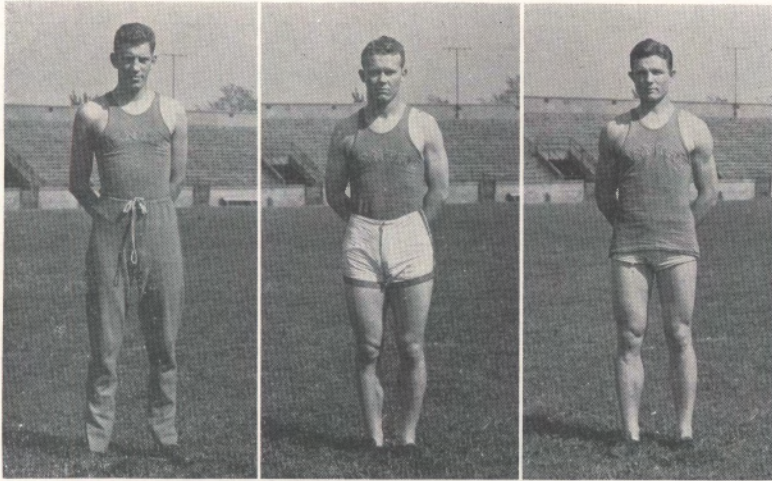


Bray, Manager

Bartlett

Crenshaw





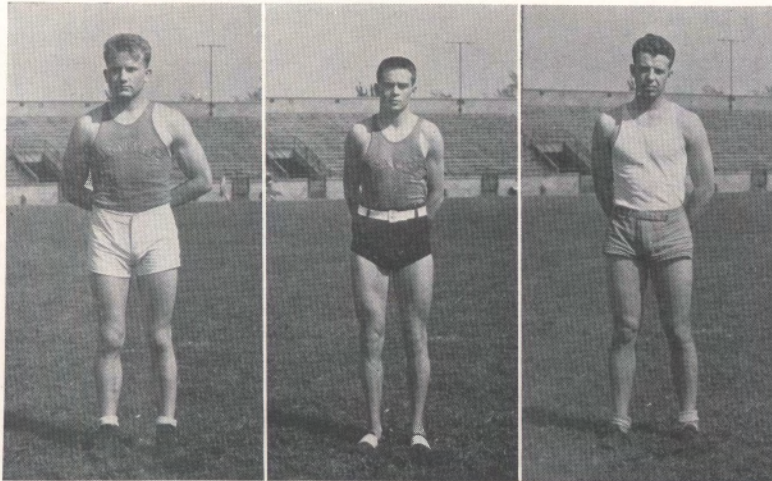
Henn

Ramseier

Ensminger

meet proved to be one of the most exciting track encounters held here during recent years. After the battle was over, Berca, by virtue of a win in the mile relay, led the field with $71\frac{1}{2}$ points, with Centre second with $64\frac{1}{2}$ points, and Eastern third with a total of $13\frac{1}{4}$ points.

The Colonels will complete the shortest track season in many years by competing in the state meet on May 28 when they will vie for honors with cinder stars from Eastern, Western, Georgetown, Murray, University of Louisville, Transylvania, Berea, Union, and Morehead

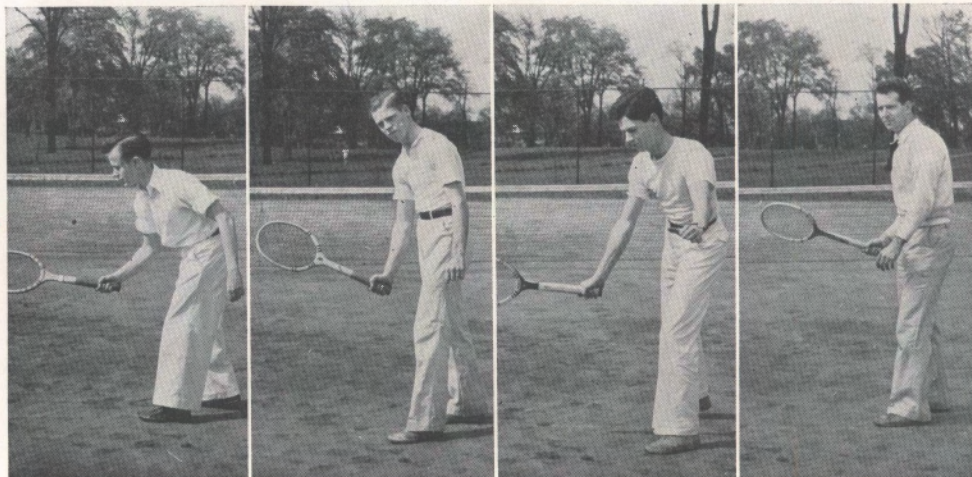


Long

Seale

Anderson



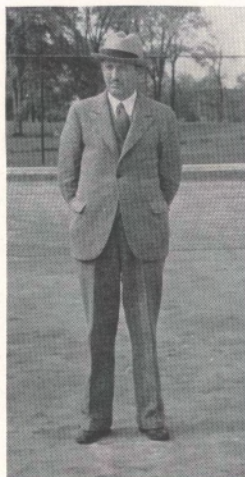


Piatt

Heizer

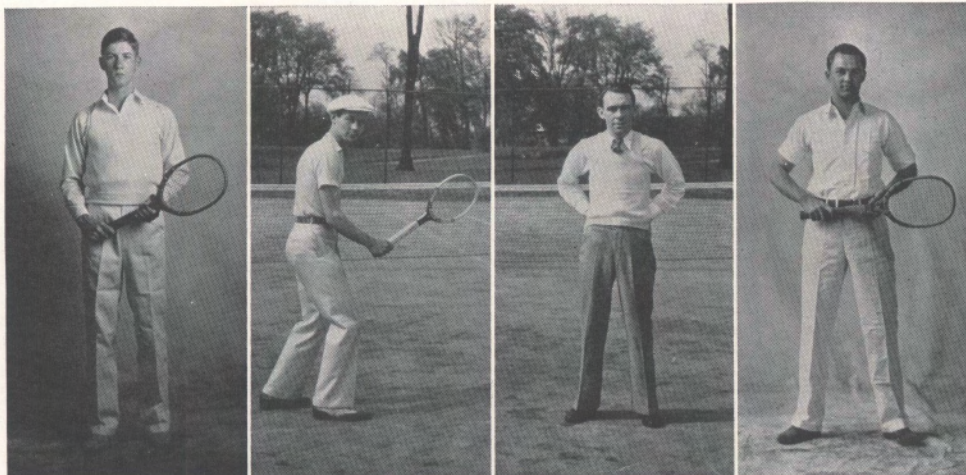
Russell

King



HARVEY J. ALEXANDER
Tennis Coach





Jackson

Jones, Captain

Ellis, Manager

Barker

RESUME OF TENNIS SEASON

Captained by Tommy Jones, veteran of three years' experience, the Centre netters have experienced thus far a profitable season, having won four of nine matches played.

Perhaps the most outstanding performer of this year's squad is Caldwell Russell, freshman ace, who has won eight out of nine starts while playing in number one position. His only loss came at the hands of the National Intercollegiate Champion with whom he played at Tulane on the team's annual tour of Southern Colleges.

Accompanied by Coach Harvey Alexander and Manager Steve Ellis, the Colonels recently completed their tour of the South with one win in four starts. Handicapped by inclement weather at the time when spring drills were scheduled to be held, the Colonels found that the Southern lads had an edge due to their year-round reasonable tennis climate. Most formidable opposition was encountered in the representatives of Vanderbilt, Alabama, and Tulane, who conquered the Gold and White 6-1, 3-2, and 6-0 respectively. The University of Mississippi was the lone victim of the Centre Racquetees by the score of 1-0 when Russell took his match. Rain prevented the playing of other scheduled engagements.

Matches remain with the University of Kentucky at Lexington, with Berea at Berea, and with Eastern at Danville.

Results by team match score are as follows:

April 7—Centre 4; Eastern 3—at Richmond.
 April 20—Centre 1; University of Louisville 4—at Louisville.
 April 23—Centre 5; Berea 1—at Danville.
 April 25—Centre 4; Xavier 3—at Cincinnati.
 April 26—Centre 2; University of Cincinnati 5—at Cincinnati.
 May 4—Centre 1; University of Louisville 4—at Danville.

SOUTHERN TOUR

May 6—Centre 1; Vanderbilt 6—at Nashville.
 May 8—Centre 2; Alabama 3—at Tuscaloosa.
 May 9—Centre 1; Mississippi 0—at Clinton.
 May 10—Centre 0; Tulane 6—at New Orleans.

REMAINING GAMES

May 22—University of Kentucky—at Lexington.
 May 23—Berea—at Berea.
 May 26—Eastern—at Danville.





WOMAN'S DEPARTMENT ATHLETICS

Van Winkle, Colonelette Swimming Captain; Loner, Gym-Dandy Swimming Captain; Haber, Folk Dancer.

Roach, Gym-Dandy Hockey Captain; Starling, Gym-Dandy Bowling Captain.



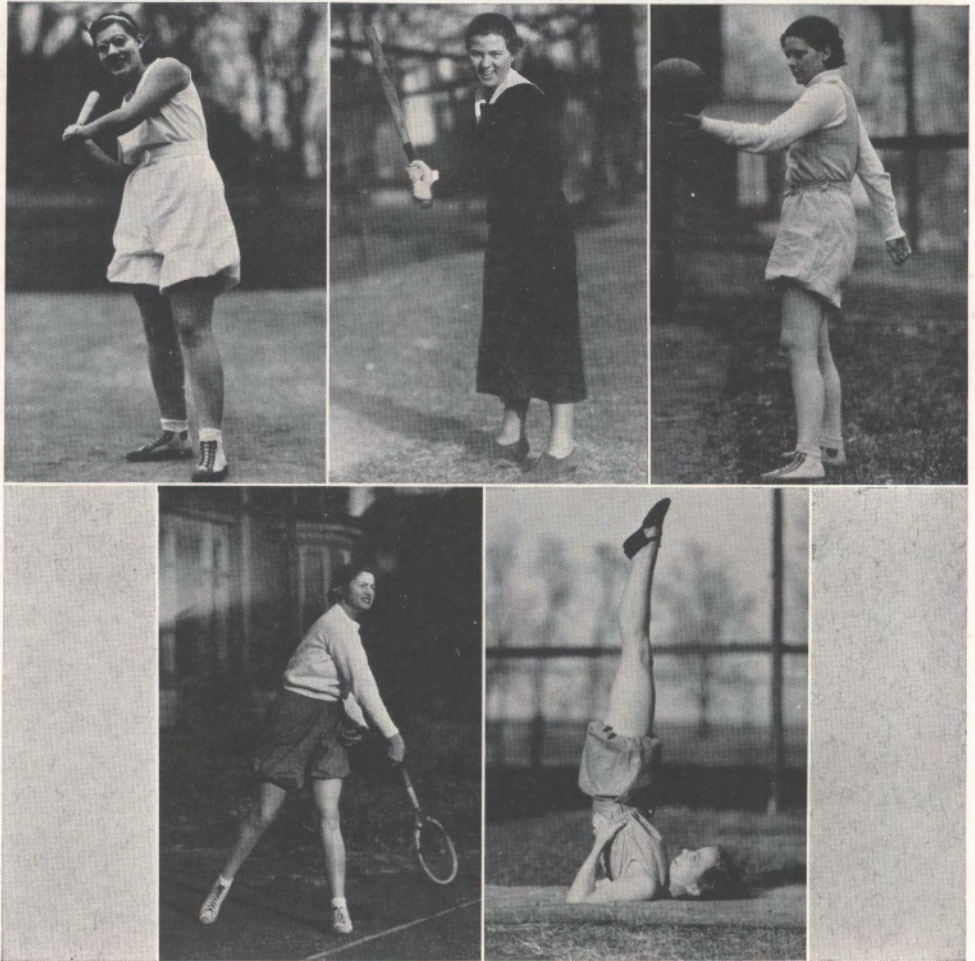


WOMAN'S DEPARTMENT ATHLETICS

Wood, Colonelette Volley Ball Captain; Rollins, President of Athletic Council; Marcum, Colonelette Tennis Captain.

Walters, Colonelette Track Captain; Ross, Colonelette Basketball Captain.





WOMAN'S DEPARTMENT ATHLETICS

Burley, Colonelette Baseball Captain; Turck, Gym-Dandy Baseball Captain; Speckman, Gym-Dandy Volley Ball Captain.

McMullen, Gym-Dandy Tennis Captain; H. Pilkington, Tumbling Captain.



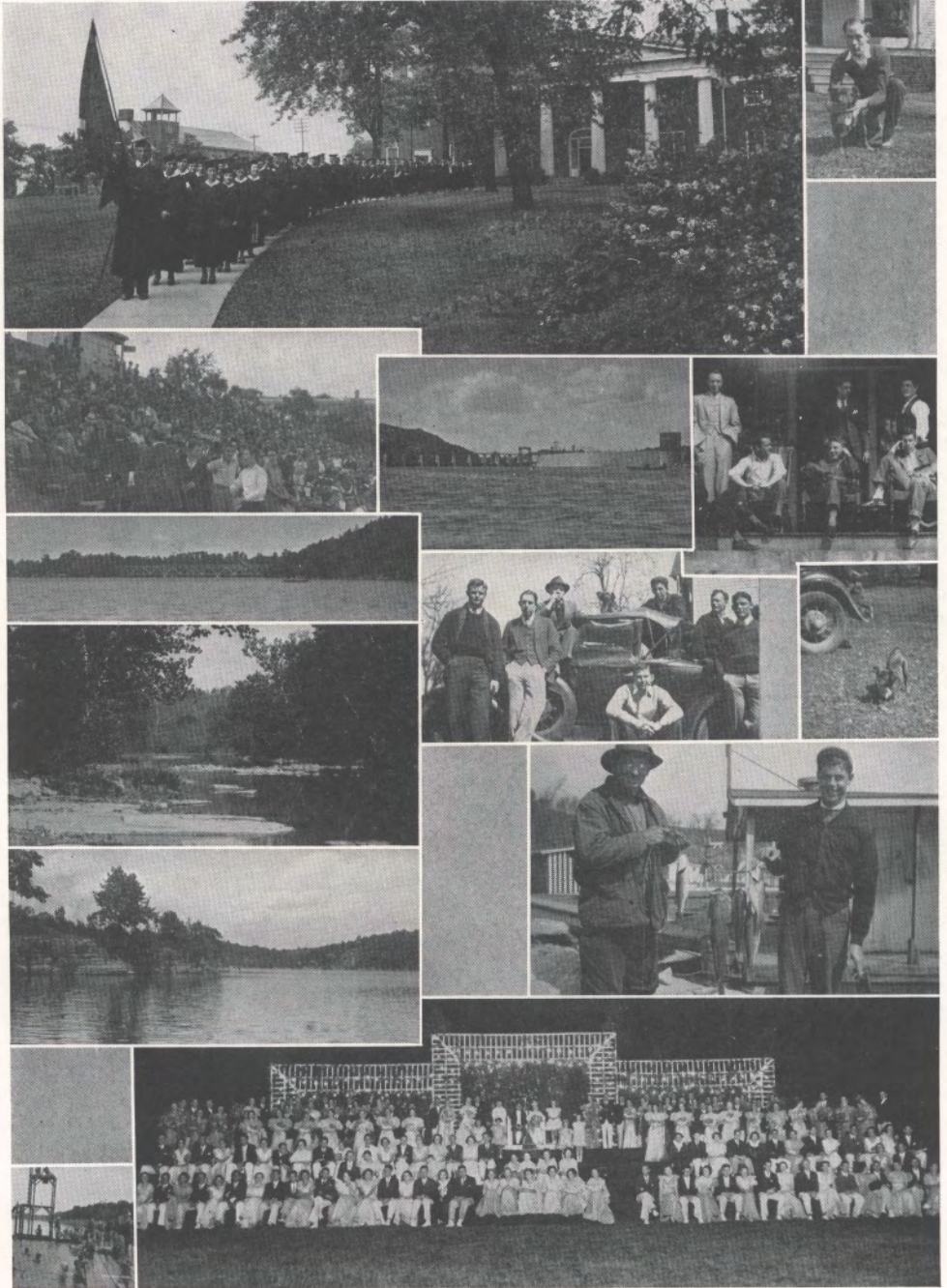


WOMAN'S DEPARTMENT ATHLETICS

Andres, Colonelette Hockey Captain; Stallard, Gym-Dandy Basketball Captain; Blanc, Hiking Captain.

Alcock, Gym-Dandy Track Captain; Brownlee, Colonelette Bowling Captain.







CHARLES RODES READ



APRIL



MISS FRANCES GARRARD





DELTA KAPPA EPSILON

Litsey, Allen, Sanders.

Mann, Pulliam, Sullivan.

Wycoff, Carrington, Hazelrigg.





DELTA KAPPA EPSILON

CHAPTER ROLL

SENIORS:

Ben Shaw

JUNIORS:

James H. Mann

Weston Allen

Berry Litsey

SOPHOMORES:

Jack Carrington

Joseph Wycoff

Arch Pulliam

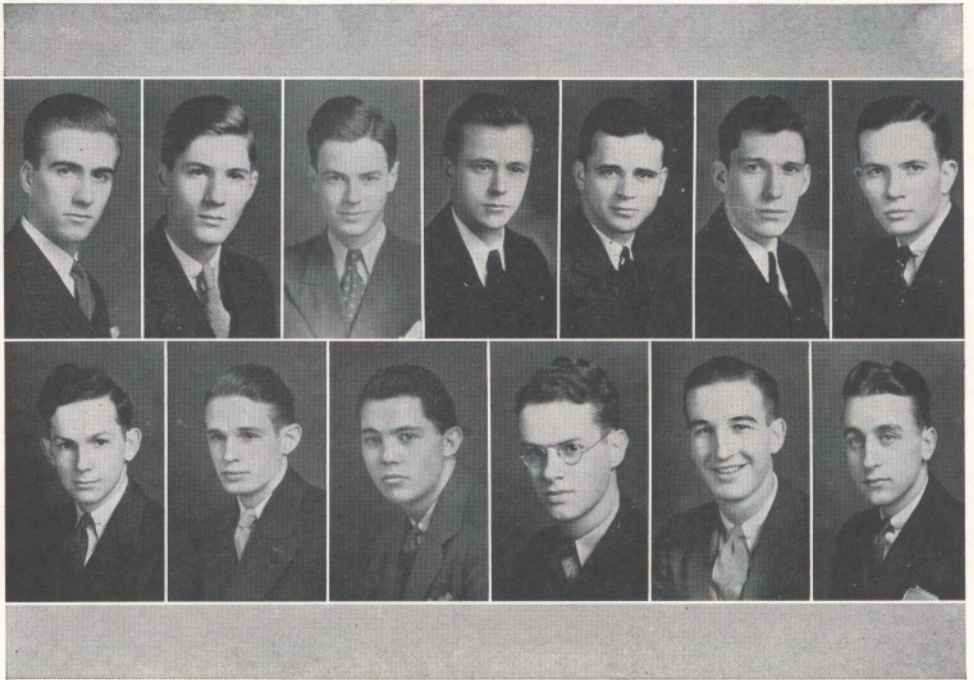
FRESHMEN:

Charles Hazelrigg

Riggs Sullivan

Dan Sanders

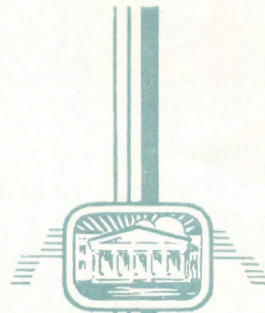




BETA THETA PI

Young, Jackson, Russell, Piatt, Hendren, Luxford, Cochran.
Walker, Wallace, Powell, Cheek, Chowning, Metcalf.





BETA THETA PI

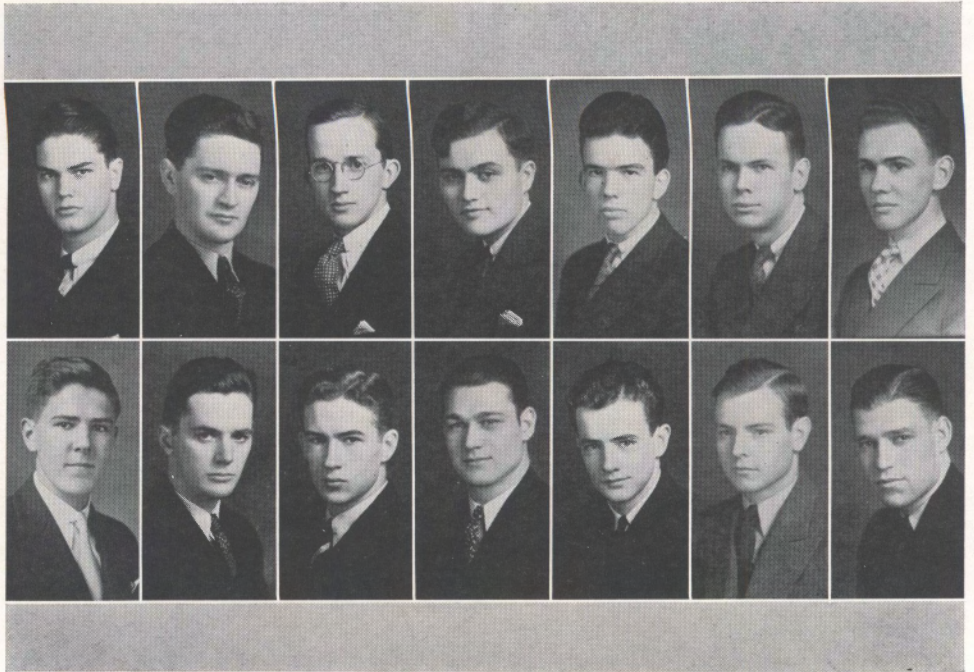
CHAPTER ROLL

W. R. Powell, President
C. W. Metcalf, Vice-President
R. S. Piatt, Treasurer
W. B. Young
R. G. Jackson
H. J. Cochran
H. M. Chowning
H. A. Wilkinson
W. R. Luxford
J. W. Swain
L. M. Cheek
E. J. Hendren
J. W. McNeill
H. B. Cary
J. A. Wallace
G. C. Russell
W. C. Irvin
H. W. Walker

PLEDGES

Robert Campbell
Thomas C. Dedman, Jr.

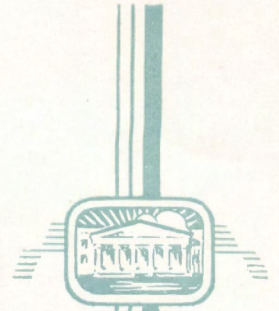




PHI DELTA THETA

Davidson, Murphy, Sweets, Sanders, Harbison, Bohon, Dickel.
Young, Jackson, Morton, Lancaster, Puryear, Roberts, Hundley.





PHI DELTA THETA

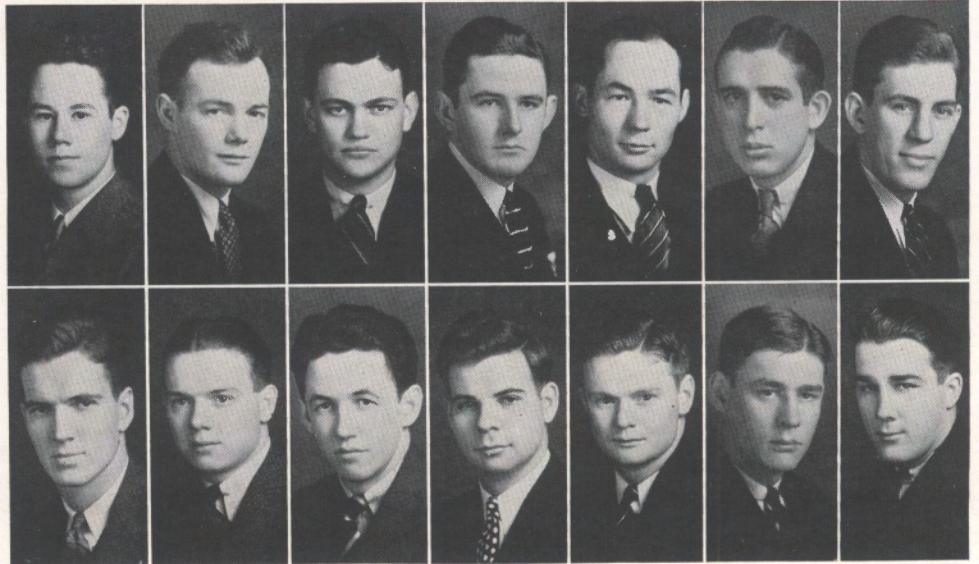
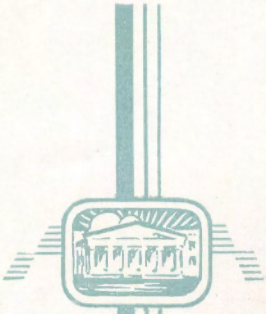
CHAPTER ROLL

Hughes Jackson
James L. Murphy
George Bohon
Henry Sanders
Leslie R. Boyd
David Roberts
Robert E. Puryear
Martin Sweets
Stanley Harbison
Wesley H. Stodgill
Joseph King
Robert Hundley
Preston Young
Joseph Dickel
B. G. Davidson
Harold Morton
English Sullivan
Charles Lancaster

PLEDGES

Edgar Kitchen

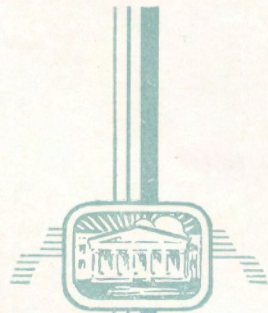




SIGMA CHI

Howard, Kennedy, Robinson, Bean, Jones, Bray, Henn.
Jackson, Mercier, Lamb, Bassett, Willis, Gore, Arnold.





SIGMA CHI

CHAPTER ROLL

SENIORS:

- Thomas H. Jones, President
- Chris S. Jackson
- Frederick E. Henn
- John C. Robinson
- Roy Arnold

JUNIORS:

- Edward C. Brown
- Harold S. Mercier
- David H. Bassett

SOPHOMORES:

- Jackson M. Bray
- William S. Kennedy
- David W. Lamb

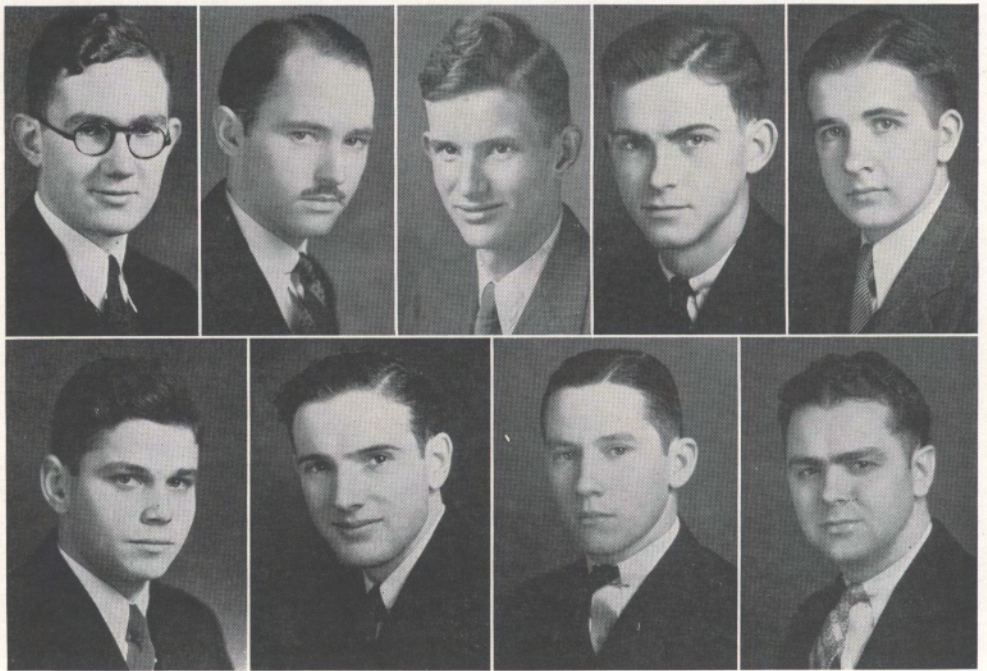
FRESHMEN:

- Frederick K. Howard
- Edward H. Bean, Jr.

PLEDGES:

- Murl J. Gore
- John W. Willis

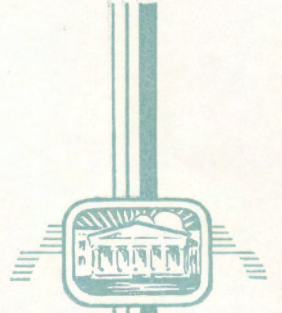




ALPHA KAPPA PI

McMullen, Wood, Vallandingham, Edwards, Bedinger.
Whitman, Bodner, Nicholson, Giles.





ALPHA KAPPA PI

CHAPTER ROLL

Chauncey Alcock
George Bedinger
Frank Whitman
Burks Williams
Rush Nicholson
Haynes McMullen
Allen Edwards
Russell Wood
Donald Taylor

PLEDGES

Herchel Giles
Theodore Meadors
Willis L. Vallandingham
Thomas Harmon
Byron Shipley
Oscar Wisner
Robert Wisner
James Morey
William D. Moeman
Kenneth W. Eichols





SIGMA ALPHA EPSILON

CHAPTER ROLL

SENIORS:

Allen P. Dodd, President
George A. Berryman, Vice-President
Fred G. Rowell, Treasurer
James Gilbert
John R. Kitchen

JUNIORS:

Louis T. Griffith
William H. Christison
Charles R. Read
William I. Fryer
Charles Carpenter
Garland Rotenberry

SOPHOMORES:

Charles C. Calvert
Richard H. Udlock
Irving Heiman
Hiram G. Williamson
Glenn G. Flynn

FRESHMEN:

Louis G. Meyer
William Baird





MISS HELEN BONER, Sponsor





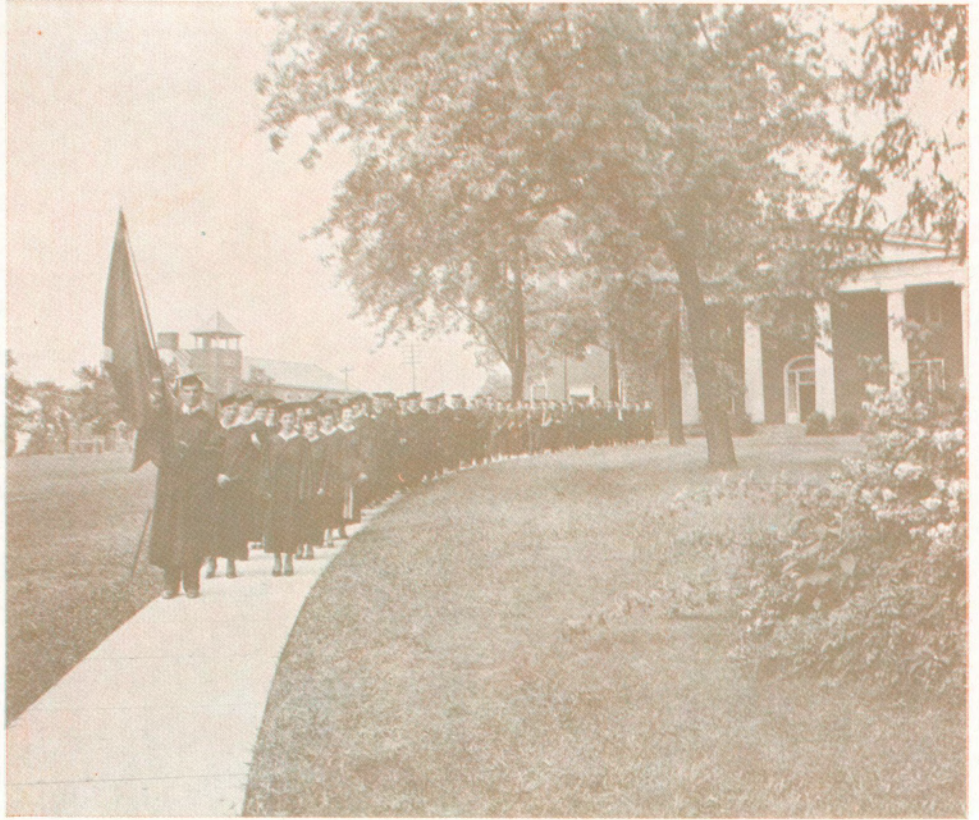
INTER-FRATERNITY COUNCIL

Mann, Bedinger, Allen, Dodd, Nicholson.
Bray, Powell, Young, Read, Jones.





JAMES HAROLD MANN





MAY



MISS HELEN BONER





ELEPHANT VINE NEAR HERRINGTON LAKE
CHENAULT BRIDGE, KENTUCKY





WORLEY HAWTHORNE



JUNE



MISS EMILY DOWNTON





MISS VIOLA TURCK
Carnival Queen 1934





JAMES P. EDWARDS
Carnival King 1934





WESLEY CARTY

JUNIOR BIOGRAPHIES

Again in an attempt to achieve difference and distinction in this, the 1934 Olde Centre Year Book, we have chosen to set the Junior Class apart by devoting these pages exclusively to Junior Biographies as follow:

CHARLES HENRY GARTRELL, Ashland, Kentucky—Freshman Football; Centre College Players; International Relations Club; Business Manager "Olde Centre" '34; Student Council; Business Manager-Elect Cento '35.

LOUIS THOMA GRIFFITH, Carrollton, Kentucky—Sigma Alpha Epsilon, President '34, '35; Male Quartette '31, '32, '33, '34; Glee Club '31, '32, '33; Leader Chapel Choir '31, '32, '33, '34; Centre College Cento Staff; Assistant Editor of Cento '33, '34; Editor-elect, Cento '35; Editor of Olde Centre '34; Freshman Basketball; Freshman Track; Cheer Leader '32; Varsity Track '33; English Club; International Relations Club; Pitkin Club; Omicron Delta Kappa.

HELEN BONER, Lebanon, Kentucky—Freshman Pitkin Club; Athletic Association; Basketball Team '31, '32, '33; Glee Club; Hockey Team '31, '32, '33; Chain Club; Athletic Council '32, '33, '34; Student Cabinet '32, '33; Sponsor S. A. E. Fraternity '32, '33, '34; International Relations Club; English Club; Woman's Department Editor of Olde Centre '34.

FRANCES STITH, Danville, Kentucky—Freshman Pitkin Club; Glee Club; Vice-President Freshman Class; Chain Club; Senior Pitkin Club; Carnival Queen '33; Treasurer of Sophomore Class; Student Cabinet '33, '34; Student Council '33, '34; Ye Rounde Table; International Relations Club; English Club; Cotillion Club.

WILLIAM H. CHRISTISON, Moline, Illinois—Transfer, Roosevelt Military Academy; Sigma Alpha Epsilon; Cento Staff '34; Assistant Editor of Olde Centre '34; International Relations Club.

ELMER HENDREN, Danville, Kentucky.

ALTON J. ELINE, St. Matthews, Kentucky.

CLEMMONS LEE KNIGHT, Talmadge, Kentucky.

RICHARD G. JACKSON, Danville, Kentucky—Beta Theta Pi; Freshman Pitkin Club; Tennis Team '33, '34; Keys Fraternity; Senior Pitkin Club; Student Council '33.

MARY SHACKELFORD, Richmond, Kentucky—Transfer, Eastern State Teachers College; English Club; International Relations Club.

MARY VIRGINIA WOOD, Danville, Kentucky—Centre College Players; Glee Club; Freshman Pitkin Club; Senior Pitkin Club; English Club; International Relations Club; Cotillion Club.

JOHN P. FRANK, Danville, Kentucky.

GEORGE GAINES BEDINGER, Walton, Kentucky—Alpha Kappa Pi; Associate Business Manager Centre College Cento; Feature Writer '33, '34; Alumni Editor '31, '32, '33; Chamberlain Literary Society; Centre College Christian Association, Secretary '33, '34.





WILLIAM BLUE YOUNG, Louisville, Kentucky—Beta Theta Pi; Interfraternity Council '34; Senior Pitkin Club '33, '34; Freshman Pitkin Club; Deinologian Literary Society; International Relations Club; Glee Club; Cheer Leader '32, '33, '34.

GEORGE BOHON, Harrodsburg, Kentucky.

JOHN L. DURHAM, Danville, Kentucky.

SUELLA BIGHAM, Covington, Tennessee—English Club; Freshman Pitkin Club; International Relations Club; Athletic Association; Basketball Team '31, '32; Glee Club; German Club; Cento Staff.

JETTA LEE HUFFMAN, Pikeville, Kentucky—Transfer, Pikeville Junior College; English Club; Athletic Association.

ROBERT L. HUNDLEY, Danville, Kentucky.

RANDOLPH R. FISHBACK, Versailles, Kentucky.

GEORGE G. BEASLEY—Danville, Kentucky.

FRANCES BROWNLEE, Due West, South Carolina—English Club; Athletic Association; Glee Club; Athletic Council '33, '34.

CHARLES M. CARPENTER, Reynolds, Illinois.

JAMES RODMAN FORD, Owenton, Kentucky—Glee Club; Centre Majors.

BERRY L. LITSEY, St. Louis, Missouri—Delta Kappa Epsilon; English Club; Deinologian Literary Society; Interfraternity Council '32; Manager Freshman Track Team; President of Sophomore Class; Assistant Stage Manager, Centre College Players '34; Keys Fraternity.

CHARLES RODES READ, Danville, Kentucky—Sigma Alpha Epsilon; Freshman Pitkin Club; Centre College Players, Vice-President '33; Deinologian Literary Society, Vice-President '32; English Club; Pitkin Club; International Relations Club; Interfraternity Council, Vice-President '33, '34; Honor Student '31, '32, '33; English Assistant; Cotillion Club.

GORDON T. SMITH, Westfield, Massachusetts—Phi Kappa Tau; Chamberlain Literary Society.

MAUDE SUTTON, Danville, Kentucky—English Club; International Relations Club.

WESTON G. ALLEN, Mayfield, Kentucky.

JAMES H. MANN, Glasgow, Kentucky—Delta Kappa Epsilon, President '34; Deinologian Literary Society; Treasurer '32; Vice-President '33; Student Council '32, '33; Interfraternity Council '33, '34; English Club, Vice-President '33; Pi Kappa Delta; International Relations Club; Ernst Prize '32, '33; Oratorical Prize '33; Debate Team '32, '33, '34; Debate Council '33, '34; English Assistant '33, '34.

LILY STAMPER, Beattyville, Kentucky—Transfer, Pikeville Junior College; English Club; German Club; International Relations Club; Athletic Association.

ETHEL WHITEHOUSE, Danville, Kentucky—English Club.

HENRY W. SANDERS, Louisville, Kentucky.

WALTER REYNOLDS POWELL, Washington, D. C.—Beta Theta Pi; Freshman Track; Freshman Pitkin Club; International Relations Club; Deinologian Literary Society, President '33; President of Junior Class; Cento Staff; Cheer Leader '33.



FOSTER M. SWARTS, Louisville, Kentucky.
FREDERICK P. SPATH, Great Barrington, Massachusetts.
DAVID HENRY BASSETT, Woodville, Kentucky—Transfer, University of Michigan '33; Sigma Chi; Chess Club; International Relations Club; German Club.
FRANCIS SMITH, Danville, Kentucky—Treasurer Freshman Class; English Club; International Relations Club; Treasurer Junior Class.
FRED MAE BURLIN, Martin, Ohio—German Club Secretary '33, '34; Athletic Association; Freshman Phi Kappa Club; Athletic Council; Senior Phi Kappa Club; No Record Table; Student Council '33, '34; House Chairman of East Hall '33, '34; Soccer Team '33, '34.
CHARLES MCNEALD, Winchester, Kentucky—Beta Theta Pi; Freshman Phi Kappa Club; Centre College Players, President '34; Student Council, Secretary and Treasurer '34; Dialectical Literary Society; Senior Phi Kappa Club; English Club.
WOODROW H. LAMBSON, Danville, Kentucky.
JOHN S. WILLIE, Lexington, Kentucky.
WILLIAM G. CHRISTIAN, Scarsville, Kentucky.
WILLIAM FRYER, Butler, Kentucky—Sigma Alpha Epsilon; English Club; Dialectical Literary Society; Chess Club '31, '32.
BARBARA DAUGHERTY, Danville, Kentucky—Basketball Team '31, '32; English Club.
VERWELL WISE, Danville, Kentucky—Athletic Association; Soccer Team '31, '32; Basketball Team '31, '32; Student Cabinet '32, '33, '34; English Club; International Relations Club.
HERSCHEL E. QUINN, Martin, Kentucky.
JOHN W. MARSH, Lancaster, Kentucky.
CHARLES H. McMULLEN, Danville, Kentucky.
A. GARLAND ROTENBERG, Lancaster, Kentucky—The Moody Bible Institute of Chicago, Class President '28-'31; The Louisville Presbyterian Seminary, Senior Class Vice-President '31-'32; Now minister of the Lancaster Presbyterian Church; State Clerk, Transylvanian Presbytery, U. S. A.; State Clerk, Association of Transylvanian Presbyteries, U. S. and U. S. A.; Commander, Hazel Sanford Post of the American Legion.
LOGAN W. CHEEK, Danville, Kentucky—Beta Theta Pi; Freshman Phi Kappa Club Vice-President '32; Senior Phi Kappa Club '33, '34; Dialectical Literary Society '33, '34; International Relations Club '33, '34; Chess Club '33; Centre College Christian Association; English Club '34.
ALLEN E. EDWARDS, Danville, Kentucky.
EUGEN M. JEFFERSON, Chatham, Virginia.
HAROLD E. MERRICK, Rochester, New York.
ROBERT BRIDLEY PIATT, Louisville, Kentucky—Beta Theta Pi; Tennis Team '33, '34; Centre College Players; Dialectical Literary Society; International Relations Club; Chess Leader '35; Freshman Phi Kappa Club.



Autographs



CENTRE COLLEGE

Founded 1819

DANVILLE, KENTUCKY

Fully Accredited



Centre College has been educating young people for one hundred and fifteen years. There have been no departures from the two primary purposes of the foundation of the college. The first was that the building of Christian character should be the primary objective. The second was that a broadly cultural education in the liberal arts and sciences should be offered. Both of these principles are accepted by the present administration as correctly defining the attitude of the small college of liberal arts. It aims to develop character. It is cultural and not vocational.

Centre College has always been concerned more with training for life than with increasing earning power; with scholarship for its own sake rather than for its financial returns; with character of heart as well as with strength of intellect. Centre College in 1934, presents an ideal of education that for more than a century in countless colleges has given to the nation its finest spirits and that ought not to be surrendered over night for a purely utilitarian view of school and life.



IN KENTUCKY AND THE SOUTH

CENTRE COLLEGE

Charles J. Turck, President

THE WOMAN'S DEPARTMENT
of
CENTRE COLLEGE

Danville, Kentucky

Fully Accredited



On the basis of one hundred and fifteen unbroken years of service in the South and in the nation, Centre College invites a consideration by young men and young women seeking to find the best in college training.

The acquisition by Centre College in 1926 of the property and assets of Kentucky College for Women gave to Kentucky its only system of co-ordinate education. The two colleges are under one administration and faculty, but with separate buildings and campuses and separate student bodies. This plan of organization provides the advantages of separate colleges for men and for women without the disadvantages of complete separation. It is the plan adopted by Columbia and Barnard, by Harvard and Radcliff, by Brown and Pembroke Hall, and by Tulane and Sophie Newcomb. It has worked with complete success at Centre College for the past eight years.

The Woman's Department of Centre College is the only four-year woman's college in the state. Like the men's college it is fully accredited by the Association of American Universities, and the Association of the Colleges of the Southern States and is on the approved list of the American Association of University Women. The same broad cultural education is now offered to the young women of the South that Centre College has offered to young men for more than a century.



IN KENTUCKY AND THE SOUTH

THE WOMAN'S DEPARTMENT OF CENTRE COLLEGE

Charles J. Turck, President

Opportunities Are All Around Us

Some people are always wishing they had the opportunities of others. Some stores are doing the same thing. But opportunities are everywhere—at least we think so. Every day we find some new way to serve our customers just a little better—some new opportunity to be of service. We make it so. There is always room for improvement and we are always trying to improve things. The values of Yesterday are bettered by the values of Today.

A cordial invitation is extended to all who desire to use this store for their shopping requirements.

WELSH-WISEMAN CO.
INCORPORATED ESTABLISHED 1852

"One of Kentucky's Good Stores"

O. A. KAYS & COMPANY

Incorporated

SMART WEARING APPAREL
FOR MEN

Danville - - Kentucky

THE GILCHER HOTEL

"In the Bluegrass"

Danville's Modern, Fireproof Hotel

120 rooms

THE COFFEE SHOPPE

Dining Room

Fountain Service

"If it isn't Right
We make it Right"

Phone 91

BAUGH & GARNER

Incorporated

House Furnishers

Danville—Harrodsburg
Lexington—Mt. Sterling

GRUEN, BULOVA,
and all American-made
Watches
in pocket and strap models
Watch and Jewelry Repairing
A Specialty

Moderate Prices

E. H. KAHN

Main St.

Danville

DANVILLE BAKERY

221 Walnut St. Phone 247

«

GOOD BREAD

A necessary aid to good health

«

Kentucky Maid Bread

Burke's Cakes



The Home of

HART SCHAFFNER AND MARX CLOTHES

Nunn-Bush Shoes

Style Park Hats

Stetson Hats

Arrow Shirts

Interwoven Hose

Bradley Sweaters

Compliments of
STITH FUNERAL HOME

CLINE'S SHOE SHOP

Quality Repairing and Shoe Service
For Danville and
Centre College

Phone 142

Two Doors West of Post Office

THE DANVILLE LAUNDRY AND DRY
CLEANING COMPANY, INC.

Phones 71 and 72

LAUNDERERS

MIRACLEANERS

W. H. ROBERTSON & SON

arrow shirts
smart clothes
stetson hats

The College Man's Preference
smith smart shoes

"First With The Latest"

FLAIG JEWELRY CO.

Established 1865

DANVILLE, KENTUCKY

JONES BROTHERS

Groceries, Fancy Fruits
And Vegetables

Phones 35 & 36

Main St.

DANVILLE, KY.

Complete Line
of
Sporting Goods

Expert Radio
Repairing

G. E. Refrigeration

BRYANT H'DWE CO.

North 3rd St.

Phone 82

THE CITIZENS NATIONAL BANK

Danville, Kentucky

Compliments of
GRAVES, COX & CO.
Lexington, Kentucky
Outfitters to college men

We Are Always For
Old Centre
**SPOONAMORE'S DRUG
STORE**
The REXALL

Perpetuate Life's Happiest Moments
With Pictures



THE SIMMONS STUDIO



"Photographs Live Forever"

Picture Framing
Wall Paper
Paints and Glass
H. COOMER

Compliments of
**THE DANVILLE
GREENHOUSES**

Harrodsburg Greenhouses

CHRISTMAN & SON

502 College St. Harrodsburg, Ky.

Phone 285j

Corsages a Specialty

Special consideration given fraternity
trade

W. D. LUNSFORD'S

I. G. A. Grocery

Phones 763 & 764

Danville, Kentucky

BRYAN HUNT CO.

Incorporated

Lexington, Ky.



Distributors For

SUN-KIST BRAND CALIFORNIA
CANNED FRUIT



Ask your retailer for
this brand. They will
Please you.

FREEMAN FURNITURE CO.

"You furnish the girl,
We furnish the home."

Danville, Kentucky

THE CITY BARBER SHOP

Student's Headquarters

For

Hair Cuts

Shaves

Shoe Shines

SWISS SANITARY MILK COMPANY

Pasteurized Milk and Cream,
Butter and Buttermilk,
Cottage Cheese & Chocolate Milk
Ice Cream

Phone 337

Best Materials
Fine Workmanship
Proper Prices

THE B. & B. SHOE SHOP

Herbert Brewer, Prop.
South Third St.

We keep you warm
with
REGAL & RED PLUME COAL
FARMERS SUPPLY CO.

Fire

Tornado

Insurance

N. K. TUNIS & CO.
Danville, Ky.

Automobile

Liability

CRESCENT LUMBER CO.

Lumber
Mill Work
Building Materials



“This is the House
that Jack Built”



Danville, Ky.

We extend
to the class of
1934

Congratulations

and

Best Wishes

BEAUMONT INN

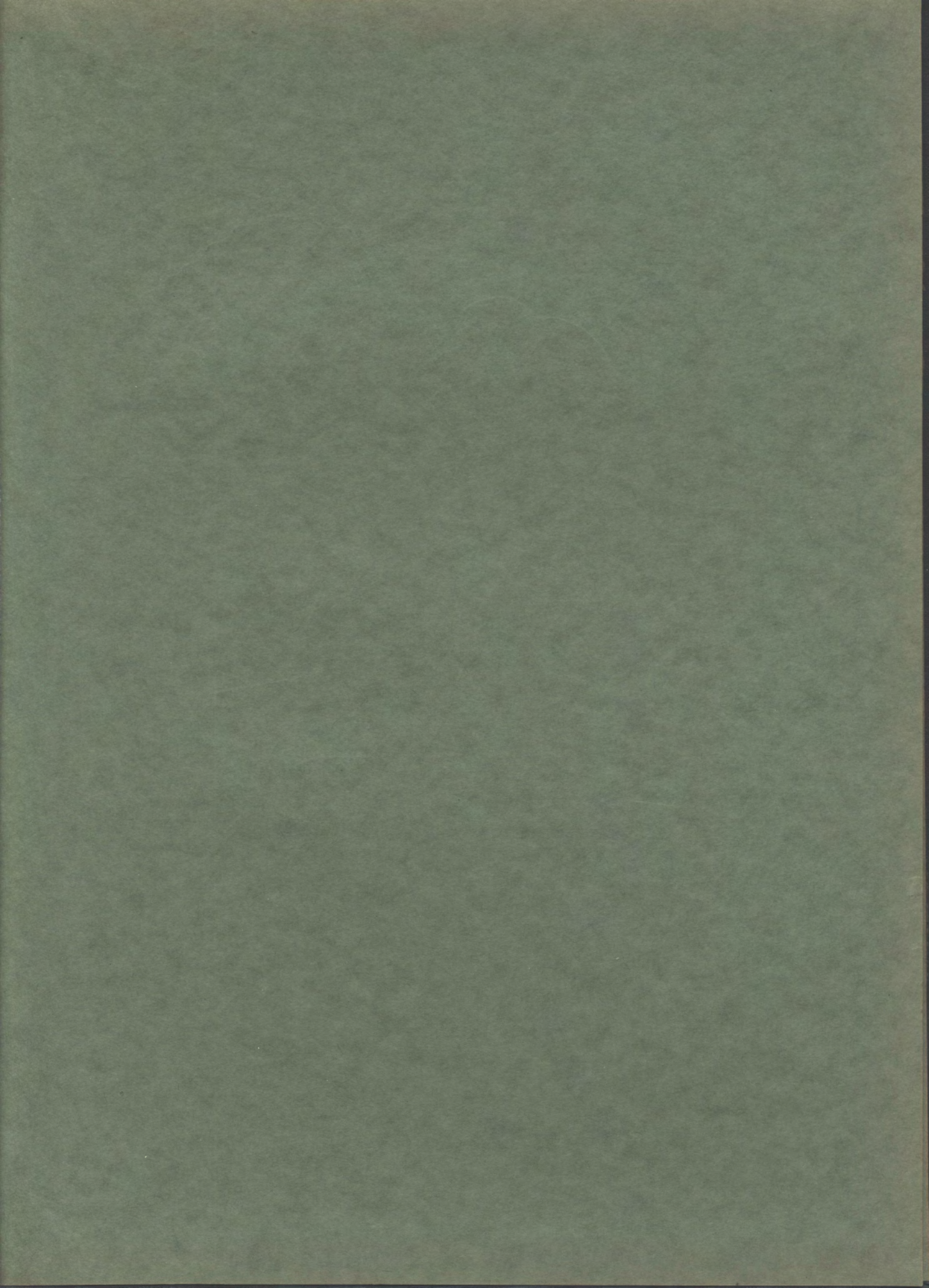
Harrodsburg, Ky.

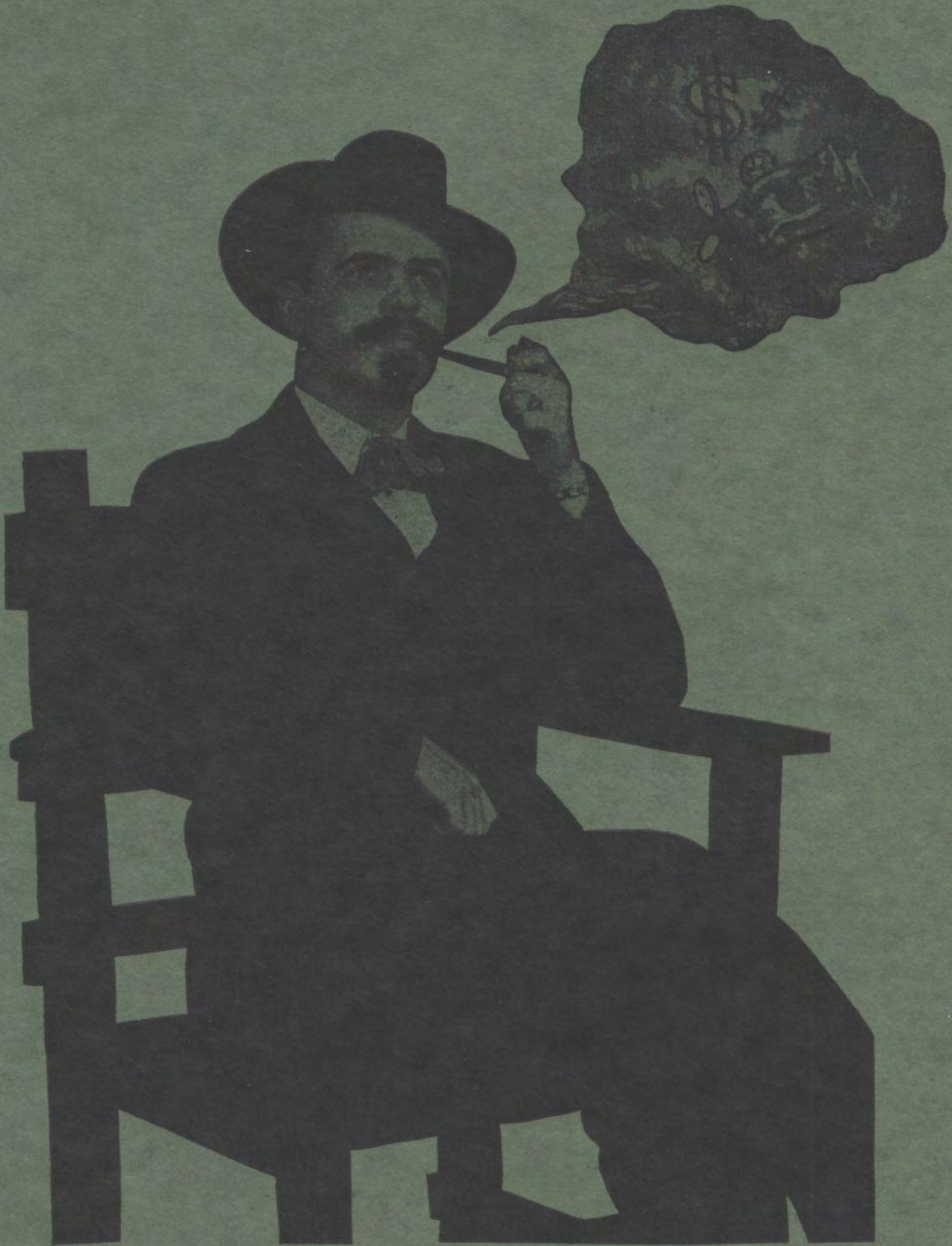
Phone 249

Kentucky's
Outstanding Inn

Compliments
of
COOK & DURHAM
Insurance Agents

Compliments of
THE
CENTRAL WHOLESALE
COMPANY





CHARLES H. GARTRELL
Business Manager
Olde Centre 1934



LOUIS T. GRIFFITH
Editor-in-Chief
Olde Centre 1934

