



old  
CENTRE  
1930

The image shows a dark, textured book cover with an intricate, embossed decorative border. The border consists of a central diamond shape surrounded by a rectangular frame with ornate, symmetrical scrollwork and floral motifs. The text 'old CENTRE 1930' is embossed within the diamond. The word 'old' is in a lowercase, serif font, 'CENTRE' is in a larger, all-caps serif font, and '1930' is in a smaller, lowercase serif font. The entire design is rendered in a light, embossed tone against the dark background.



Elizabeth M. Clark

Centre College —





OLD  
CENTRE

1930

*Published by*  
THE JUNIOR CLASS  
of  
CENTRE COLLEGE

*and*

The Senior Class  
of

*Kentucky College for Women*  
*Woman's Department of Centre College*  
Danville, Ky.



# Contents

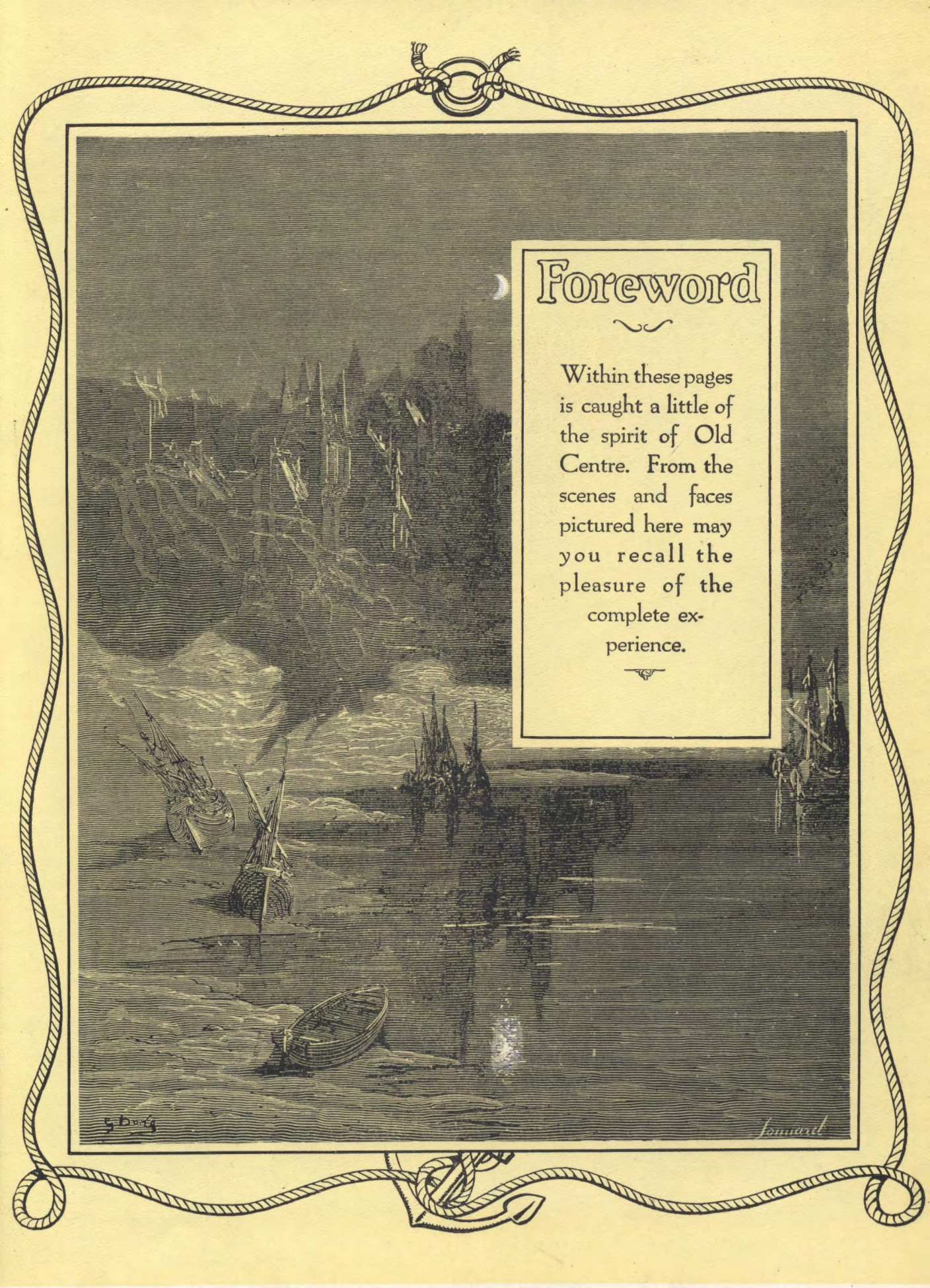
College



Classes

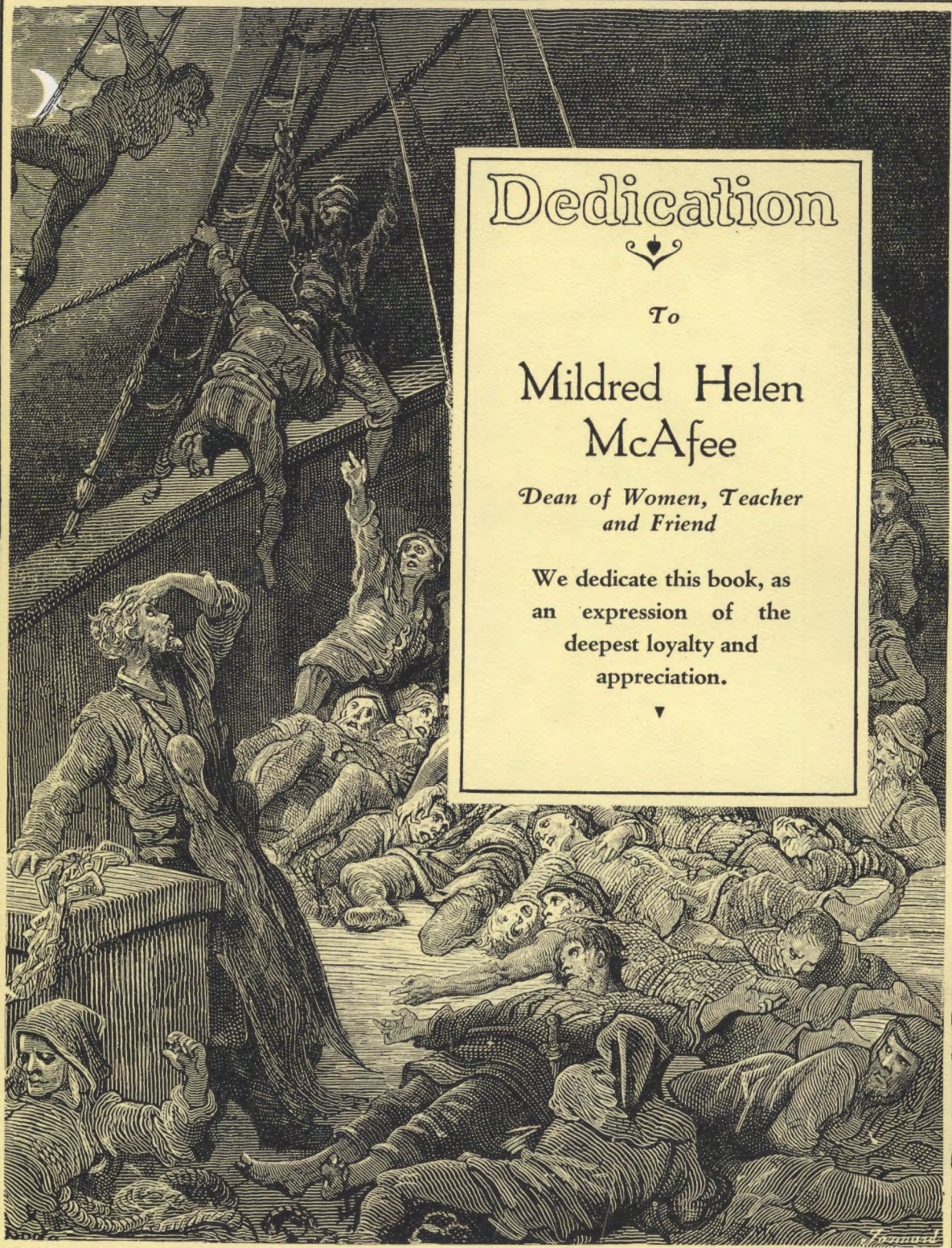


Organi-  
zations



# Foreword

Within these pages  
is caught a little of  
the spirit of Old  
Centre. From the  
scenes and faces  
pictured here may  
you recall the  
pleasure of the  
complete ex-  
perience.



# Dedication



To

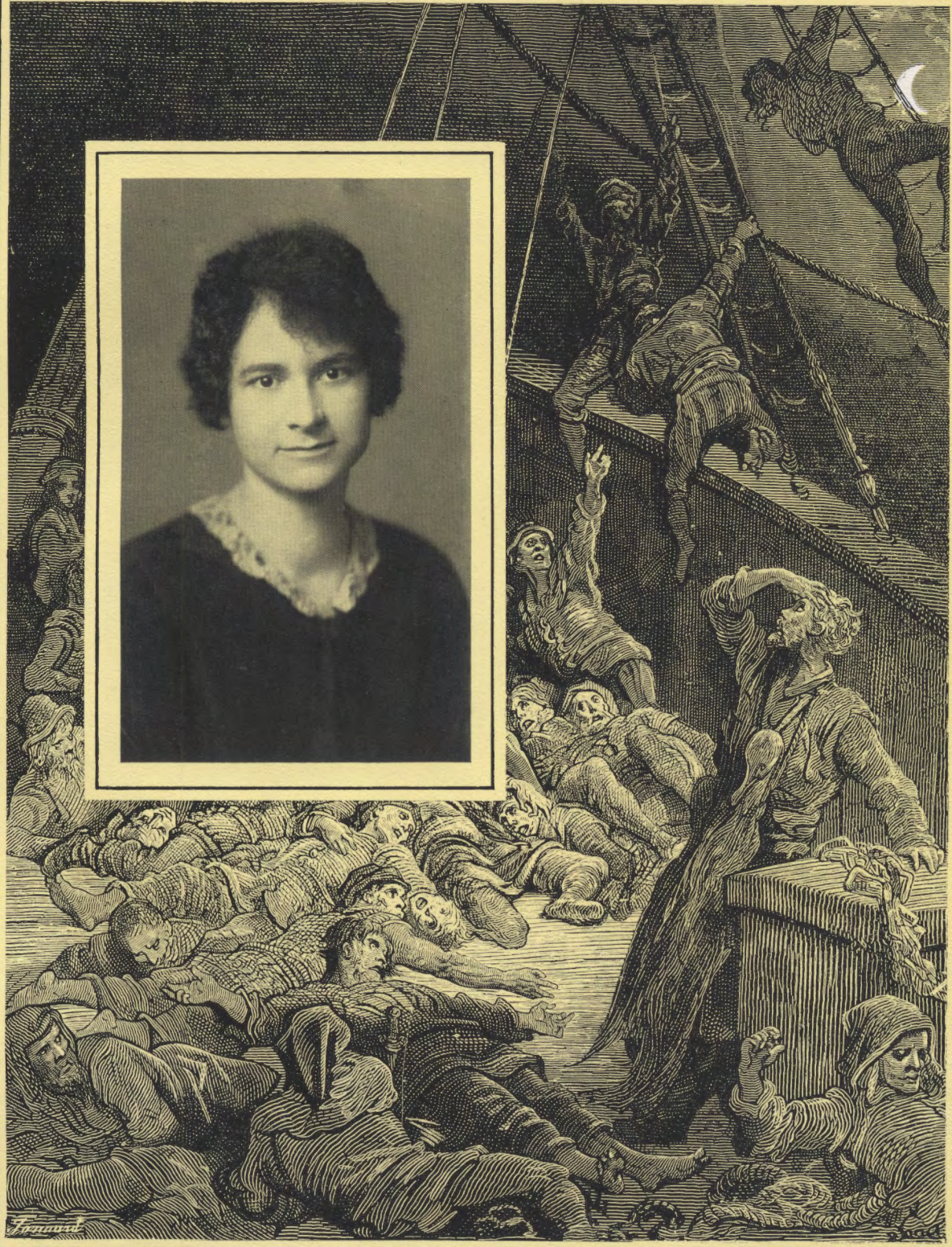
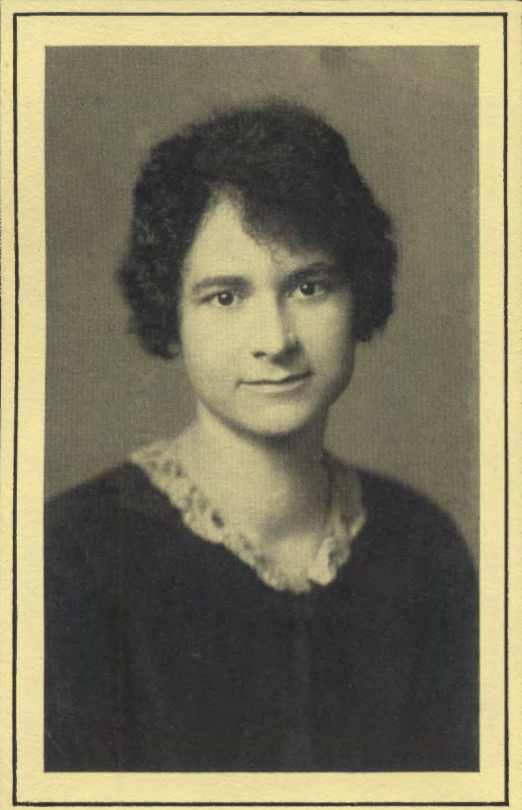
Mildred Helen  
McAfee

*Dean of Women, Teacher  
and Friend*

We dedicate this book, as  
an expression of the  
deepest loyalty and  
appreciation.







Forrest

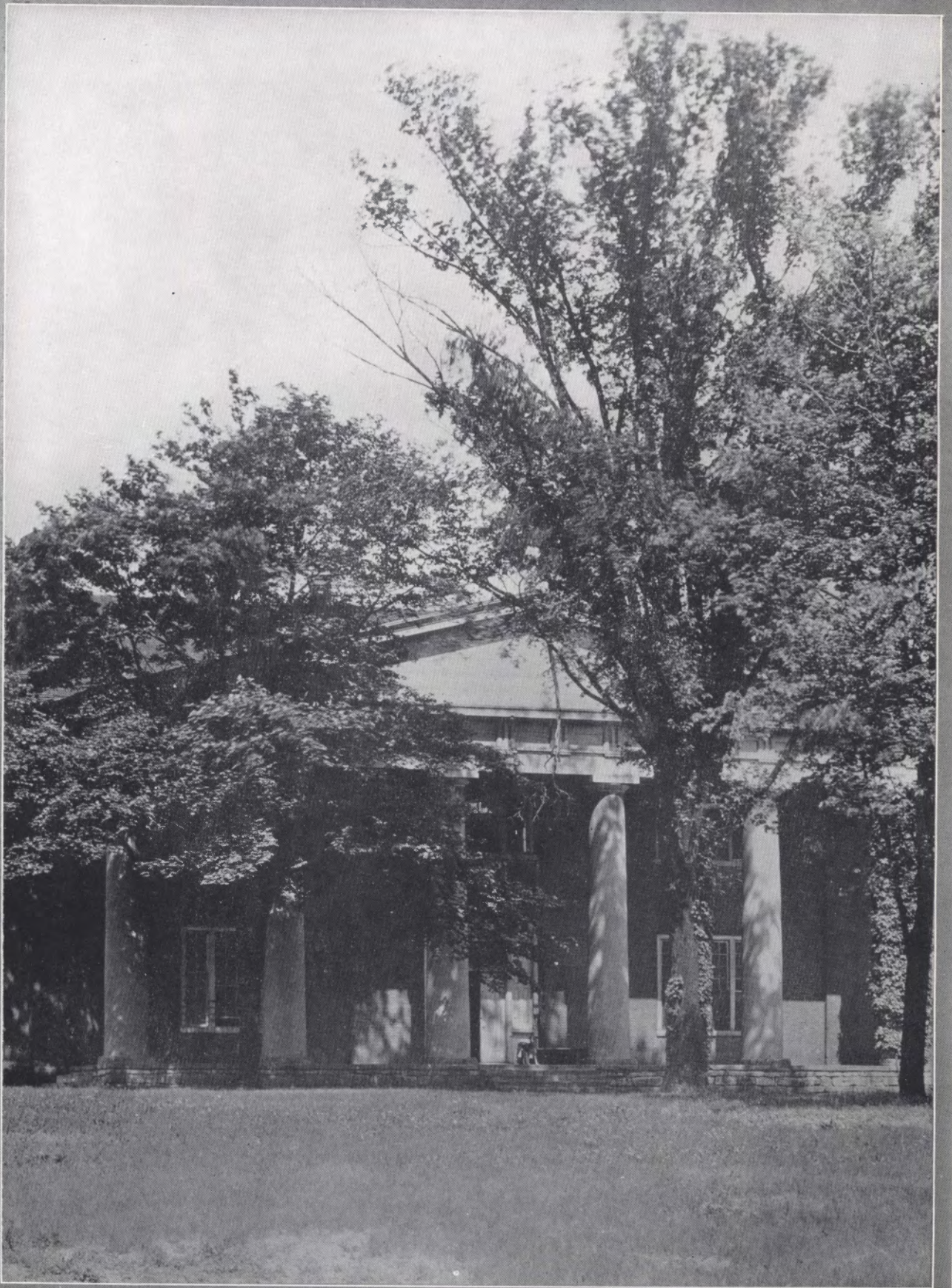




THE COLLEGE









PRESIDENT CHARLES J. TURCK



FRANK LEWIS RAINEY, S.B., Sc.D.

*Dean*

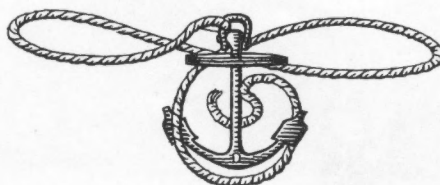
Dr. Rainey heads the Department of Biology at both the Men's and Women's Departments of Centre College. He has been a member of the faculty for twenty-two years. In 1928 he became the Dean of Men, and in 1929 the Dean of both Departments. Dr. Rainey has always had an active interest in Centre students, being a member of Ye Rounde Table and a charter member of Omicron Delta Kappa. Until the pressure of executive duties prevented, Dr. Rainey coached the plays of Sock and Buskin. There is no member on the faculty more loved or held in higher esteem by the student body than Dr. Rainey.



JAMES HOWELL HEWLITT, A.M.

*Dean of Men*

Dr. Hewlitt, for ten years the professor of English at Centre College, was selected in 1929 to be the Dean of Men. He has more than filled his obligations. As advisor for the Social Committee, Dr. Hewlitt has helped put Centre dances on a high standard. As a member of Omicron Delta Kappa and Ye Rounde Table, he has displayed intense interest in student affairs. The Centre student body could not do without Dr. Hewlitt as advisor and leader.







ANNIE JANE SMITH, M.A.  
*Professor of Home Economics*



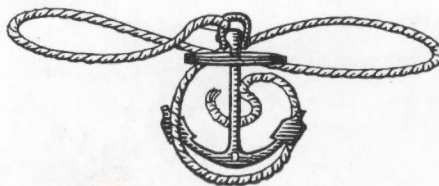
FRANCES E. LEE, M.A.  
*Assistant Professor of English*

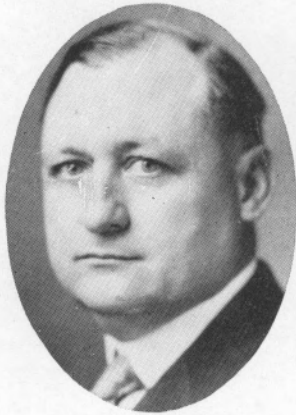


ALICE H. RECORD, M.A.  
*Professor of Latin*

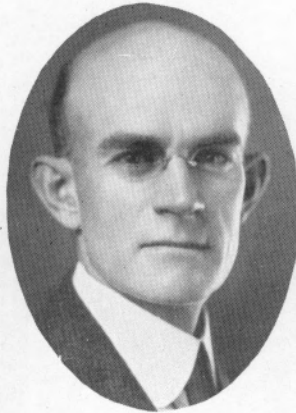


JESSIE L. KEEP, B.S.  
*Professor of Physical Education*





PORTER



ALLEN



McMULLEN

### Faculty

- ALBERT EUGENE PORTER, A.M. . . . . *Professor of Greek and Latin*  
 CHARLES ETHELBERG ALLEN, A.M., B.D. . . . . *Professor of History*  
 CHARLES BELL McMULLEN, A.M., Ph.D. . . . . *Professor of Philosophy*  
 FRANCIS POWELL CHEEK, A.M., D.D. . . . . *Professor of Bible and Philosophy*  
 JOHN HOWARD BILES, M.S. . . . . *Professor of Physics*



CHEEK



BILES





MINOR



WILL



ALEXANDER

### Faculty

- MILTON CARLISLE MINOR, A.M., LL.B. . . . . *Assoc. Prof. of Economics and Business Administration*
- ROLAND G. WILL, A.B., A.M. . . . . *Assistant Professor of Education and Philosophy*
- HARVEY JONSON ALEXANDER, A.M. . . . . *Assistant Professor of Romance Languages*
- THORNTON POWELL TERHUNE, M.A. . . . . *Assistant Professor of History*
- EUGENE WILBUR COOK, A.M. . . . . *Assistant Professor of Biology*



TERHUNE



COOK

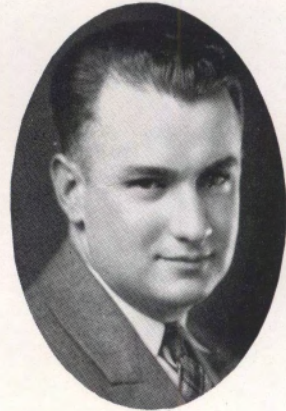




WEAVER



FEHN



ALLEN

### Faculty

- ALFRED J. WEAVER, Ph.D. . . . . *Instructor in Economics*  
 A. R. FEHN, Ph.B. . . . . *Associate Professor in Mathematics*  
 NELSON ALLEN, A.B. . . . . *Instructor in Physics and Chemistry*  
 EDWARD A. H. FUCHS, Ph.B. . . . . *Professor in German*  
 JOSEPH ALEXANDER MCCURDY, Ph.D. . . . . *Instructor in Romance Languages*



FUCHS



MCCURDY





THE CLASSES





MARY GRAY ATKINS  
*President Senior Class*  
*Second Semester*



CATHERINE EASON  
*President Senior Class*  
*First Semester*





# OLD CENTRE, 1930



## SENIORS

**MARGARET APPLIGATE** . . . . . Versailles, Kentucky  
 Captain Colonelette Basketball Team, 1926-'27, 1927-'28; International Relations Club, 1926-'29;  
 Treasurer Athletic Association, 1927-'28; "Cento" Staff, 1927-'28; Home Economics Club, 1928-'30.

*She is a young lady quite tall,  
 And could surely look down on us all;  
 By virtue of height  
 She indeed has the right,  
 But she isn't high-hattish at all.*

**ELLA MAE CAMPBELL** . . . . . Danville, Kentucky  
 Glee Club, 1929-'30; English Club, 1929-'30; Internatioal Relations Club, 1926-'30; Y. W. C. A.,  
 1926-'30.

*Now lyrical Miss Ella Mae  
 Enjoys both her work and her play;  
 She smiles on her teachers,  
 Admires their best features,  
 And does good work every day.*

**KATHRYN JEWELL CARSON** . . . . . Danville, Kentucky  
 International Relations Club, 1927-'28; Glee Club, 1927-'30; President Glee Club, 1930; Athletic Asso-  
 ciation, 1926-'30; Y. W. C. A., 1926-'30.

*She let's you ride without paying  
 To a class that you are delaying;  
 You'd just hate to cut,  
 You're a little late, but—  
 That she gets you there goes without saying.*

**MARY GRAY ATKINS** . . . . . Versailles, Kentucky  
 Glee Club, 1926-'30; Sock and Buskin, 1927-'30; House Committee, 1927-'28; French Club, 1927-'29;  
 President French Club, 1928-'29; Secretary Sock and Buskin, 1928-'29; Home Economics Club, 1928-  
 '29; Latin Club, 1928-'29; President of Class, 1928-'29; International Relations Club, 1926-'30; Treas-  
 urer International Relations Club, 1927-'28; Athletic Association, 1926-'30; Secretary Ye Rounde  
 Table, 1929-'30; Y. W. C. A., 1926-'30; President Senior Class, 1930.

*Now mischievous Miss Mary Gray  
 Keeps everyone happy and gay,  
 Yet in mathematics  
 And campus dramatics  
 She's never at loss what to say.*







SENIORS

MARGARET GIBSON . . . . . Harrodsburg, Kentucky

Transferred from Cumberland College, 1928; English Club, 1929-'30; Ye Round Table, 1930.

*This girl, it is worthy to note,  
Full many a book report wrote.  
Of the novels she scanned  
Now we must demand,  
How many, we pray, can she quote?*

DOROTHY GROW . . . . . Danville, Kentucky

International Relations Club, 1926-'28; Secretary International Relations Club, 1928; English Club, 1928-'30; Latin Club, 1928-'30; President Athletic Association, 1927-'28; Athletic Council, 1928-'29; Y. W. C. A. Cabinet, 1928-'29; President Y. W. C. A., 1929-'30; Vice-President Pitkin Club, 1929-'30; Treasurer Ye Round Table, 1929-'30; School Marshal, 1930.

*You've heard about Dorothy Grow,  
Who sometimes thinks Lambda is Rho.  
She's helpful and prudent,  
A wonderful student,  
And to her friends never says no.*

ELIZABETH JOLLY . . . . . Stanford, Kentucky

Western State Teachers College, 1927-'28; Transferred to Centre, 1928; English Club, 1929-'30; Glee Club, 1929-'30; Y. W. C. A., 1928-'30; International Relations Club, 1929-'30; Athletic Association, 1928-'30.

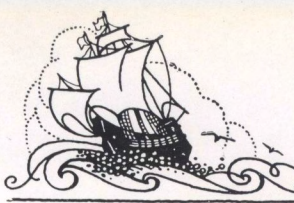
*Here's one who is never a shirker—  
Miss Jolly, an excellent worker;  
She starts out with zeal,  
Her interest is real,  
Her duties seem never to irk her.*

CATHERINE EASON . . . . . Danville, Kentucky

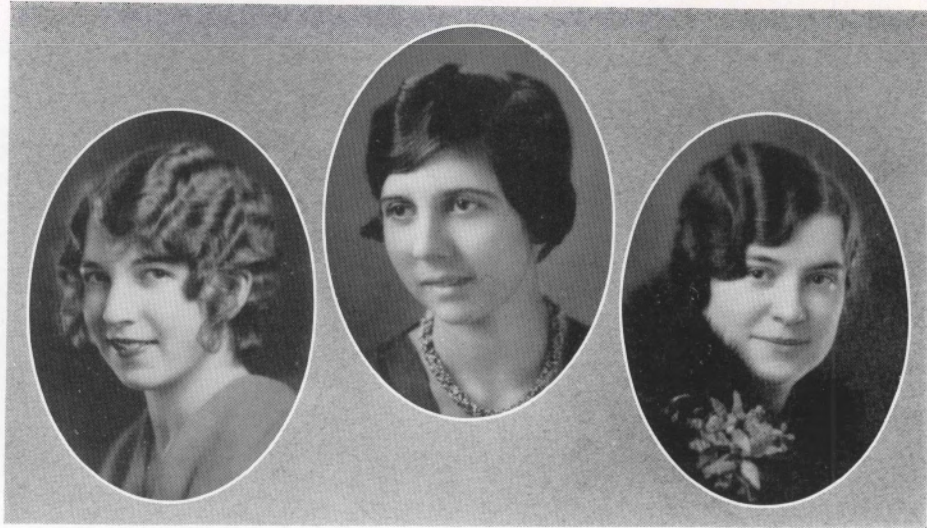
French Club, 1926-'27; International Relations Club, 1926-'28; Gym-Dandy Basketball Team, 1926-'29; Captain Gym-Dandies, 1929-'30; English Club, 1928-'30; President English Club, 1929-'30; Vice-President of Class, 1928-'29; President Athletic Association, 1928-'29; Athletic Council, 1927-'30; President of Class, 1929; Vice-President of Class, 1930; School Marshal, 1930.

*This girl, red-headed and trim,  
Is endowed with pep and vim;  
She's full of school spirit  
And ideas of merit,  
Which help both in classroom and gym.*





# OLD CENTRE, 1930



## SENIORS

ELIZABETH LINEBACK . . . . . Warsaw, Kentucky

International Relations Club, 1926-'30; Secretary International Relations Club, 1926-'27, President, 1927-'28, Vice-President, 1929-'30; Gym-Dandies, 1926-'29; English Club, 1929-'30; French Club, 1927-'28; President House Committee, 1929-'30; Y. W. C. A. Cabinet, 1927-'28; Secretary Y. W. C. A., 1928-'30; Pitkin Club, 1929-'30; Annual Staff, 1928-'29; Sock and Buskin, 1928-'30; Glee Club, 1926-'28; Athletic Association, 1926-'30.

*Miss Lineback is very adept  
At picking up every new step;  
Her excellent dancing  
Is very entrancing,  
She does it with grace and with pep.*

MARY CROMWELL RODES . . . . . Danville, Kentucky

International Relations Club, 1926-'30; President International Relations Club, 1926; English Club, 1928-'30; French Club, 1928-'29.

*A person thrice blessed by Fate,  
Can come to class ten minutes late,  
Can speak with expression  
And make an impression  
In a manner quite fine to relate.*

JUANITA RAYBOURNE . . . . . Mackville, Kentucky

Glee Club, 1926-'27; Y. W. C. A., 1926-'30; Y. W. C. A. Cabinet, 1927-'28; International Relations Club, 1926-'30; Athletic Association, 1927-'30; "Cento" Staff, 1928-'29; Vice-President Ye Rounde Table, 1929-'30; J. A. Cheek Prize, second; Vice-President Home Economics Club, 1928-'29; Student Council, 1929-'30.

*This lady would rather be reading  
Than out on the avenue speeding;  
There are things in her head  
When exams come, 'tis said,  
Which many poor crammers are needing.*





SENIORS

MARGARET SHEWMAKER . . . . . Danville, Kentucky

International Relations Club, 1926-'28; Y. W. C. A., 1927-'30; Athletic Association, 1926-'30; French Club, 1927-'28; Representative to Student Council, 1927-'28; President of Home Economics Club, 1928-'29; Vice-President Home Economics Club, 1929-'30.

*She can tell you what's in a book,  
But better than that, she can cook;  
In home decoration  
She'll find her vocation,  
And will beautify each little nook.*

ELIZABETH WALTER . . . . . Danville, Kentucky

Chi Omega, Transylvania University, 1926-'28; Transferred to Centre, 1929; Athletic Association, 1929-'30; Y. W. C. A., 1929-'30.

*Little Miss 'Lizabeth Walter  
At no calculation will falter.  
This brunette so slender  
Will find a defender  
And lead a young man by a halter.*

ARRETTA WHITE . . . . . Danville, Kentucky

French Club, 1926-'27; International Relations Club, 1926-'27; English Club, 1929-'30; Latin Club, 1929-'30; Secretary and Treasurer of Class, 1928-'29, 1929-'30; President Latin Club, 1928-'29; School Marshal, 1929-'30.

*There is a young lady named White,  
Who always is very polite.  
She conjugates Latin  
In tones soft as satin—  
A very nice way to recite.*





SENIORS

LUCIE BURNAM GARRARD . . . . . Winchester, Kentucky

International Relations Club, 1926-'30; English Club, 1928-'30; Vice-President English Club, 1929-'30; Sock and Buskin, 1928-'30; Vice-President Sock and Buskin, 1929, Acting President, 1930; Vice-President Student Council, 1928-'29; President Student Council, 1929-'30; Editor of Annual, 1928-'29; Home Economics Club, 1929-'30; School Marshal, 1930.

*A person of whom one is fond,  
Is popular, pretty and blonde;  
And she is quite wary,  
For in the library  
You'll find that her books are well conned.*

RUSSELL APPLIGATE . . . . . Danville, Kentucky

International Relations Club, 1926-'28; English Club, 1928-'30; Vice-President of Class, 1927-'28.

*The first of her class to be married,  
One never can say that she married;  
More interesting topics  
She found in the tropics,  
So southward by boat she was carried.*

MARIAN JONES . . . . . Harrodsburg, Kentucky

Glee Club, 1926-'30; International Relations Club, 1926-'28; Athletic Association, 1926-'30; Y. W. C. A., 1926-'30; International Relations Club, 1926-'28; Vice-President International Relations Club, 1927-'28; Pitkin Club, 1930; President Ye Rounde Table, 1929-'30.

*There is a young lady named Jones,  
Whose brilliance one always condones;  
Instead of the comics  
She reads economics,  
And now she knows all about loans.*





SENIORS

FLORENCE MORROW . . . . . Union City, Pennsylvania

Allegheny College, 1926-'27; Lake Erie College, 1927-'28; Transferred to Centre, 1928; Annual Staff, 1928-'29; International Relations Club, 1928-'30; Y. W. C. A., 1928-'30.

*There is a young lady named Morrow,  
Whose dancing is that of a star, oh!  
Her smiles are disarming,  
Her manners quite charming,  
She often rides in a car, oh!*

CLARINE S. SNOW . . . . . Danville, Kentucky

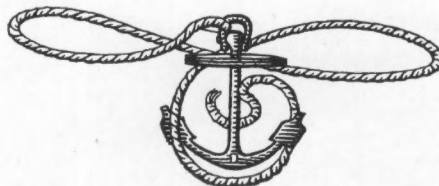
Assistant in Romance Language Department, 1928-'29; Eastern State Teachers College, summer, 1927; International Relations Club, 1926-'27; Y. W. C. A., 1926-'29; French Club, 1926-'29; Representative to Student Council, 1929; Athletic Association, 1927-'29; English Club, 1927-'30; Secretary and Treasurer English Club, 1930; Secretary and Treasurer French Club, 1929; Secretary to Dean, 1929-'30.

*Would that we all were named Snow,  
It's so easy to rhyme with, you know.  
A typist and scholar,  
As bright as a dollar,  
She helps our Old Centre to go.*

MARY GOSE . . . . . Danville, Kentucky

Delta Delta Delta, Randolph-Macon Woman's College.

*When Mary goes out to a dance,  
There's many a languishing glance  
Cast in the direction  
Of her sweet perfection,  
For she is a dream of romance.*





## The Senior Class History

**F**OUR years ago K. C. W. became the Woman's Department of Centre College. At the same time, we, the Class of '30, entered as Freshmen. We take much pride in being the first graduating class of girls to have been under the administration of Old Centre for the entire four years of our college course. We began with thirty-five in our group, and this class, gaining and losing, reached its Sophomore year with about twenty-one students. Then a year later we entered our Junior year with twenty girls. With the coming of our Senior year there were twenty of us, but at the beginning of the second semester one deserted us for the more interesting path of matrimony. Another completed the work at the end of the first term, but she will return to graduate with us in June.

The Class of '30 is proud of its efforts in helping to establish a school of co-ordinate education, the first of its kind in Kentucky. Members of our class have always held important offices and taken active part in the various organizations of the school, such as the Latin Club, the International Relations Club, the English Club, the French Club, the Y. W. C. A., the Sock and Buskin, and all athletic activities. Arretta White was the president of the first Latin Club on our campus. The first International Relations Club was headed by Elizabeth Lineback. Catherine Eason was the president of the English Club for this year. She was also president of the Athletic Association during her Junior year. Dorothy Grow headed the Y. W. C. A. during her Senior year. Lucie Garrard was president of the Student Association and acting president of the Sock and Buskin during the year of '29-'30. Margaret Shewmaker showed her domestic talents by being president of the Home Economics Club in 1928-'29. Clarine Snow acted as Secretary to the Dean of Centre during her last two years of college. Members of the Round Table from our class are Marian Jones, Mary Gray Atkins, Juanita Raybourne, Dorothy Grow, and Margaret Gibson. Mary Gray Atkins has served as president of our class during the past two years.

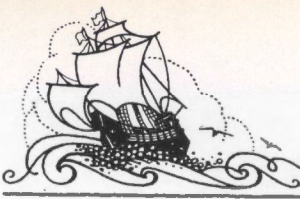
Now, after four years of work, play, and even of overcoming difficulties, it is with regret that we say farewell to Old Centre. We will welcome any event which will bring us an opportunity of returning once again to our Alma Mater.





KATHERINE TALLEY  
*President Junior Class*





Juniors

TAVNER ADAMS

SARA COLEMAN

KEITH CORNELISON

GERTRUDE GERMANN

LUCY HAYWARD

SALLIE HAYWARD







Juniors

MINA REA JONES



ALMA LATTA



MARGARET LEWIS



DAISY McCoy

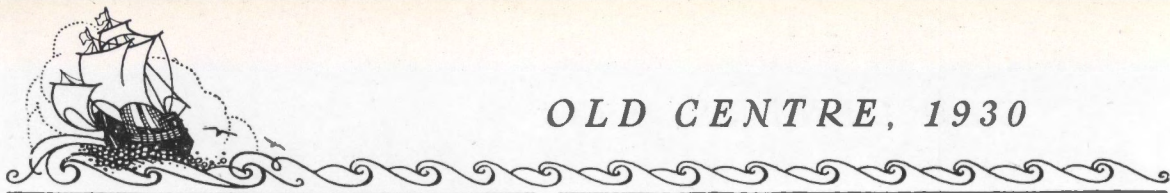


ELIZABETH MARSHALL



VIRGINIA THOMPSON





## The Junior Class History

**I**N the good old days when *we* were Freshmen, Freshmen were different. We were an inexperienced, hopeful group. As a proof we can submit the fact that the Juniors rather babied us. Brave be the Junior that would baby a Freshman now! Taking advantage of our trusting innocence, the Sophomores imposed upon us a most distressing initiation, the last of its kind, with which we shall always associate cabbages, mismated shoes, plaits, and shiny noses, not to mention minor insults. In times of crisis a nation becomes unified. From the stress of initiation rose a Freshman Class loyal to a man, but meek and tractable in spirit. However, we soon became, like any new baby, very much impressed with our own importance, due to which early acquired misconception we have suffered twinges of disillusionment in the Sophomore and Junior years.

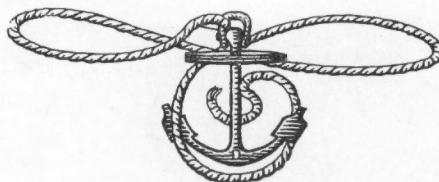
After being delightfully treated by our big sisters, the Juniors, and having been petted by the faculty, with a few well-remembered exceptions, we sank into the oblivion of the Sophomore, from whence we were occasionally summoned to run errands for the Seniors, to decorate the chapel, and to lead Y. W. programs. Toward the end of our Sophomore year we became socially-minded and gave a very nice Valentine party and a luncheon for the Seniors at the Kopper Kettle. May all Sophomore Classes profit by our excellent example! Our most serious error of that year consisted in collecting a small cartload of daises and in learning half a dozen songs for a program which did not materialize.

The Junior spirit is excellent. With a few losses, additions and corrections, we are much the same as we started. We have this year several newcomers whom we are doing our best to naturalize. We wish every member definitely to count in the college life. The achievements which we have contributed in each department are noteworthy in comparison to our numbers. The high lights of the year for us have been Freshman Week, the Junior Banquet, and the Junior-Senior Prom.





MARY McROBERTS NEALE  
*President Sophomore Class*





### The Sophomore Class

#### OFFICERS

- MARY McROBERTS NEALE . . . . . *President*  
 EDITH MARSHALL . . . . . *Vice-President*  
 RUTH DEERING . . . . . *Secretary*

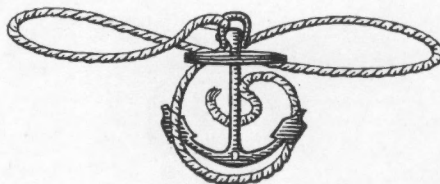
#### MEMBERS

- |                   |                   |
|-------------------|-------------------|
| EMILY ADAMS       | KATHLEEN GORIN    |
| JOSEPHINE ARDERY  | CAROLINE GRUBBS   |
| MAXINE ARNOLD     | OPAL GRAVES       |
| ELIZABETH ASHLOCK | NANCY HUNDLEY     |
| FANNIE BAKER      | ELIZABETH JOHNSON |
| LOUISE BOLING     | LOUISE JOHNSON    |
| HAZEL BRYAN       | LOUANNA KNUCKLES  |
| ELIZA CALDWELL    | LUCY PURYEAR      |
| KATHRYN CHANDLER  | DOROTHY RAYBOURNE |
| GEORGIA CUTSHAW   | SUE WHITE         |
| ELIZABETH GANT    | JOSEPHINE WINGATE |





ELEANOR MCGREGOR  
*President Freshman Class*





# OLD CENTRE, 1930



## The Freshman Class

### OFFICERS

ELEANOR MCGREGOR . . . . . *President*  
 MAY MOORE . . . . . *Vice-President*  
 NANCY SOUTHGATE . . . . . *Secretary*

### MEMBERS

JEANETTE ADAMS  
 LEO ADAMS  
 MARTHA ADAMS  
 ELIZABETH BAKER  
 MYRTLE BINGHAM  
 MARTHA FRANCES FOGIE  
 GERTRUDE BUCK  
 BEULAH CADDELL  
 GERTRUDE CAMPBELL  
 MARY SCOTT CHAFFIN  
 HELEN CHAMBERS  
 ELIZABETH CHEEK  
 MARY COLEMAN  
 GLADYS DAVENPORT  
 OLIVIA DIETERICH

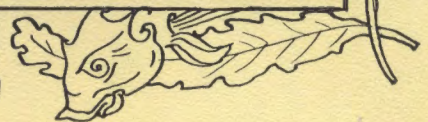
NANCY DUNCAN  
 MARY EDELEN  
 MARJORIE FAULKNER  
 JESSIE K. FELAND  
 FRANCES FLOWERS  
 MARGUERITE GAMBILL  
 GRETCHEN GILLILAND  
 MARGARET GILMORE  
 MARGARET GREENE  
 MADREW HENDREN  
 HARRISON HOLLOWAY  
 EMILY HOMANS  
 ELIZABETH JOHNSON  
 VIRGINIA KITCHEN  
 LETHEL LINNEY  
 HELEN LUDLUM

HARRIET MCDANIEL  
 SALLY MCDANIEL  
 ELIZABETH MCINTYRE  
 EVELYN MARCUM  
 IRENE NOOE  
 CHARLOTTE REDMON  
 MATTIE ROBINSON  
 JEWELL SCOTT  
 HARRIET SMITH  
 LEVADA SMITH  
 NELL SMITH  
 LORETTA TAMME  
 MARGARET TAMME  
 ANNA K. TURLEY  
 GERTRUDE WHEELDON





ORGANIZATIONS









### The Annual Staff

- MINA REA JONES . . . . . *Editor-in-Chief*
- KEITH CORNELISON . . . . . *Business Manager*
- KATHERINE TALLEY . . . . . *Literary Editor*
- LUCY HAYWARD . . . . . *Photograph Editor*
- ELIZABETH MARSHALL . . *Assistant Business Manager*





### Student Council

- LUCIE GARRARD . . . . . *President*
- KEITH CORNELISON . . . . . *Vice-President*
- ELIZA CALDWELL . . . . . *Secretary*
- JUANITA RAYBOURNE . . . . . *Senior Representative*
- DAISY MCCOY . . . . . *Junior Representative*
- LOUISE BOLING . . . . . *Sophomore Representative*
- JESSIE FELAND . . . . . *Freshman Representative*
- ELIZABETH LINEBACK . . . . . *House Committee*





### Ye Rounde Table

#### OFFICERS

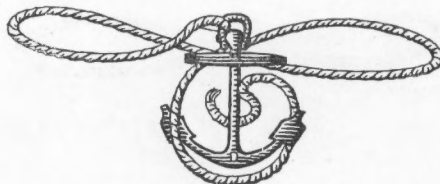
- MARIAN JONES . . . . . *President*
- JUANITA RAYBOURNE . . . . . *Vice-President*
- MARY GRAY ATKINS . . . . . *Secretary*
- DOROTHY GROW . . . . . *Treasurer*

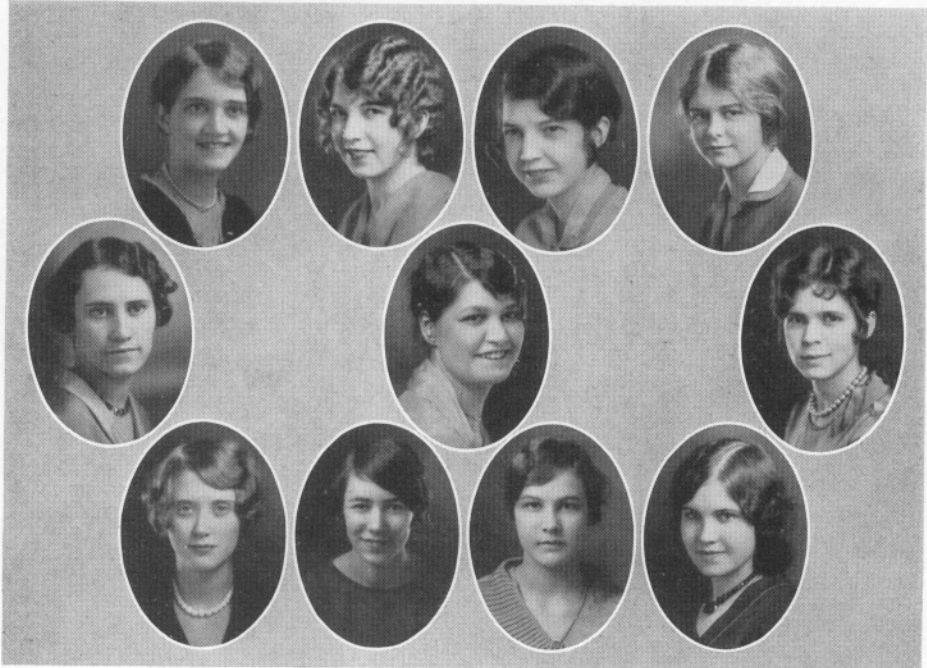
#### MEMBERS

- SARA COLEMAN
- MARGARET GIBSON
- KEITH CORNELISON
- MINA REA JONES
- KATHERINE TALLEY

#### FACULTY MEMBERS

- MISS MILDRED McAFEE
- MISS ALICE RECORD
- DR. CHARLES B. McMULLEN





### The Y. W. C. A. Cabinet

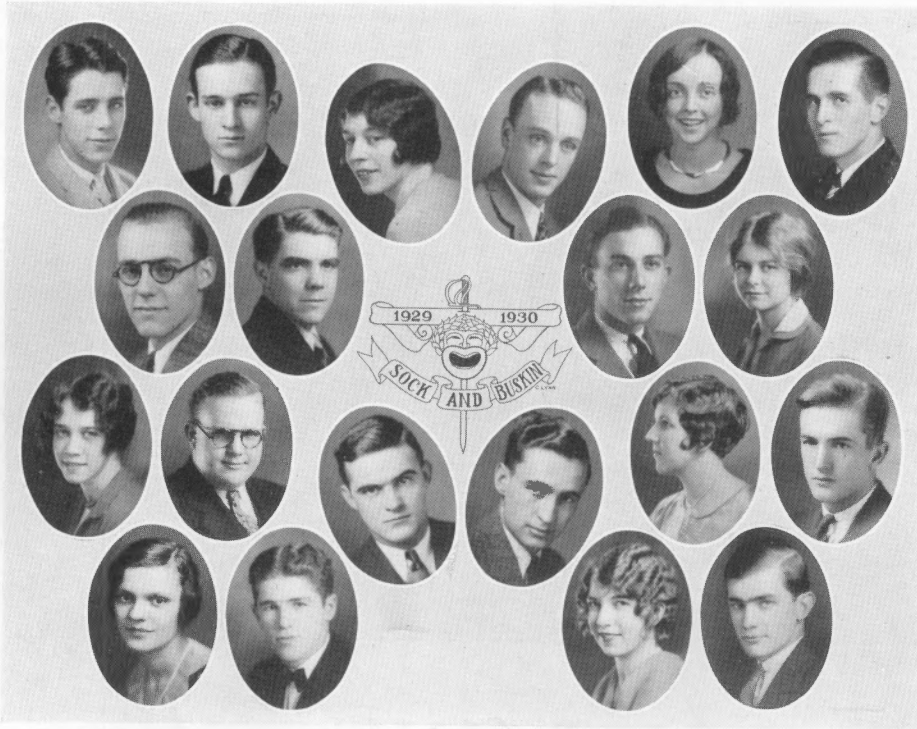
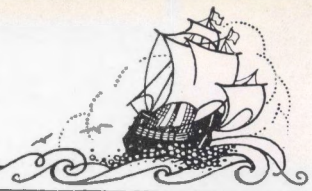
#### OFFICERS

- DOROTHY GROW . . . . . *President*  
 SARA COLEMAN . . . . . *Vice-President*  
 ELIZABETH LINEBACK . . . . . *Secretary*  
 KEITH CORNELISON . . . . . *Treasurer*  
 MISS FRANCES LEE . . . . . *Advisor*

#### CHAIRMEN OF COMMITTEES

- LUCY PURYEAR . . . . . *Program*  
 ALMA LATTA . . . . . *Social*  
 KATHERINE TALLEY . . . . . *Music*  
 CHARLOTTE SMITH . . . . . *Social Service*  
 SUE WHITE . . . . . *World Fellowship*  
 ELIZA CALDWELL . . . . . *Publicity*  
 ELIZABETH CHEEK . . . . . *President of Sub-Cabinet*





## Sock and Buskin

Starting the year off with "Bill" Smith as president and H. Carman Sing as director, taking "Jack" Sterritt's place during his absence, things looked brilliant for Sock and Buskin. The usual three one-act plays were presented in November with moderate success. Here Smith broke into the coaching lines directing one of these plays. For their ability and work in these plays, George Green, Melvin Hufficar, James Clay, Forest Morgan, Jessie Feland, and Emily Homans were admitted.

In December came Smith's resignation as president, and Lucy Garrard was promoted to the executive chair. In April the club gave its spring production, "Alice-Sit-By-the-Fire." It was well received and another success was added to the club's list of performances.

With the pressure of professorial duties being too great, Carman Sing found it impossible to direct the Carnival production. Here the club appealed to the faculty, and Dean Rainey was appointed sponsor and adviser. The club selected Smith as its director and chose the play, "You and I," for its presentation. At the present time the cast is hard at work and another success is expected.





# OLD CENTRE, 1930



## The Glee Club

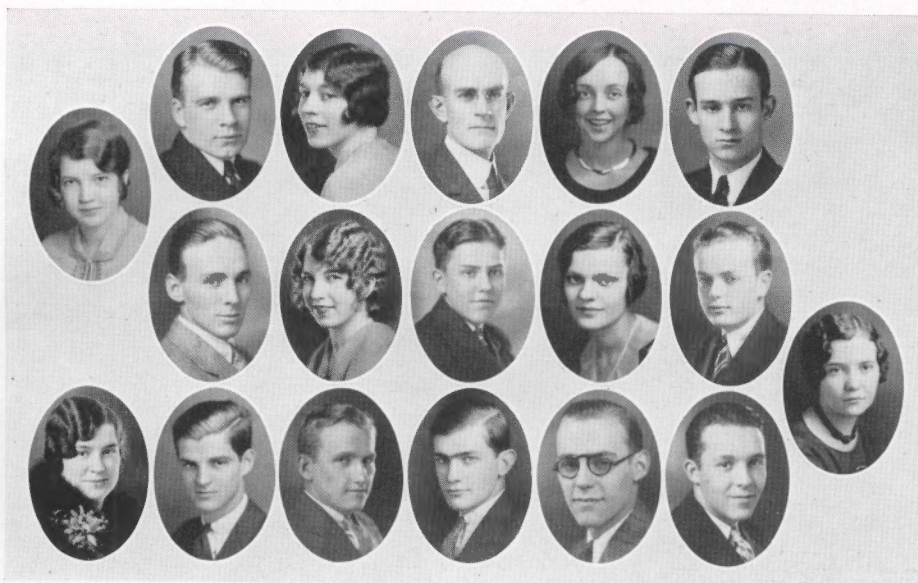
### OFFICERS

MR. LLOYD MILLER . . . . . *Director*  
 KATHRYN CARSON . . . . . *President*  
 HARRIET MCDANIEL . . . . . *Secretary*

### MEMBERS

MARY GRAY ATKINS	HARRISON HOLLOWAY
MYRTLE BINGHAM	EMILY HOMANS
LOUISE BOLING	LOUISE JOHNSON
ELIZA CALDWELL	ELIZABETH JOLLY
ELLA MAE CAMPBELL	MARIAN JONES
GERTRUDE CAMPBELL	LOUANNA KNUCKLES
KATHRYN CARSON	MARGARET LEWIS
KATHRYN CHANDLER	HARRIET MCDANIEL
ELIZABETH CHEEK	JEWELL SCOTT
KEITH CORNELISON	KATHERINE TALLEY
GRETCHEN GILLILAND	ANNA K. TURLEY
OPAL GRAVES	SUE WHITE





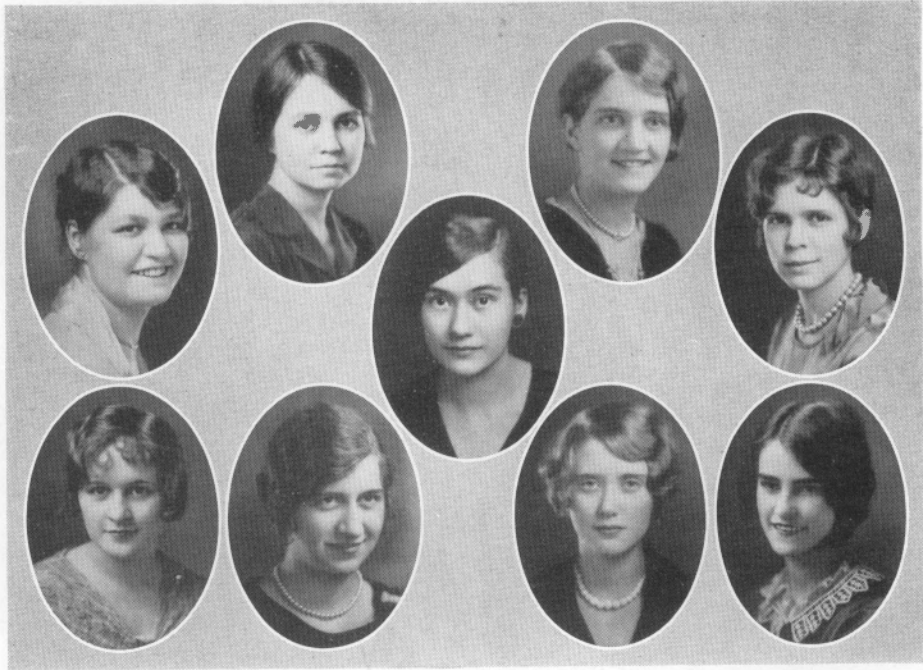
INTERNATIONAL RELATIONS CLUB

### The International Relations Club

Under the leadership of Dr. Allen, the International Relations Club began its regular bi-monthly meetings early in the fall of 1929. The officers for the year had been elected the previous spring, and were headed by Enos Swain as president. The other officers were: Elizabeth Lineback, vice-president; Lytle Chambers, secretary, and Clifford Clark, treasurer.

During the course of the year Dr. Allen made some interesting talks on international politics and domestic problems. For the most part the programs were presented by the students, who discussed state, national, and world relations.





### The Latin Club

#### OFFICERS

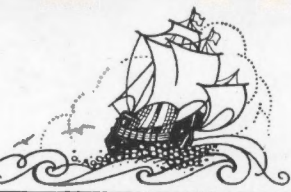
- KATHERINE TALLEY . . . . . *President*
- SARA COLEMAN . . . . . *Secretary and Treasurer*
- MISS ALICE RECORD . . . . . *Advisor*

#### MEMBERS

- |               |                      |
|---------------|----------------------|
| DOROTHY GROW  | DAISY MCCOY          |
| ARRETTA WHITE | MARTHA FRANCES BOGIE |
| ALMA LATTA    | MARY COLEMAN         |
| NELL SMITH    |                      |







### The Home Economics Club

#### OFFICERS

- JUANITA RAYBOURNE . . . . . *President*
- MARGARET SHEWMAKER . . . . . *Vice-President*
- CAROLINE GRUBBS . . . . . *Secretary*

#### MEMBERS

- |                   |                    |
|-------------------|--------------------|
| DOROTHY RAYBOURNE | MARGARET APPLIGATE |
| LUCIE GARRARD     | SALLY HAYWARD      |
| MARY GRAY ATKINS  | GERTRUDE CAMPBELL  |





### The Athletic Council

#### OFFICERS

LUCY HAYWARD . . . . . *President*  
 Miss JESSIE KEEP . . . . . *Advisor*

#### MEMBERS

CATHERINE EASON  
 DOROTHY RAYBOURNE  
 MARGARET LEWIS  
 EMILY HOMANS





### The English Club

#### OFFICERS

- CATHERINE EASON . . . . . *President*
- LUCIE GARRARD . . . . . *Vice-President*
- CLARINE SNOW . . . . . *Secretary*
- MISS FRANCES LEE . . . . . *Advisor*

#### MEMBERS

- |                    |                     |
|--------------------|---------------------|
| RUSSELL APPLIGATE  | LUCY HAYWARD        |
| ELLA MAE CAMPBELL  | HARRISON HOLLOWAY   |
| GERTRUDE CAMPBELL  | ELIZABETH JOLLY     |
| KATHRYN CHANDLER   | ELIZABETH LINEBACK  |
| MARGUERITE GAMBILL | DOROTHY RAYBOURNE   |
| MARGARET GIBSON    | JAUNITA RAYBOURNE   |
| OPAL GRAVES        | MARY CROMWELL RODES |
| DOROTHY GROW       | ARRETTA WHITE       |

SUE WHITE





OLD CENTRE, 1930



THE COLONELETES

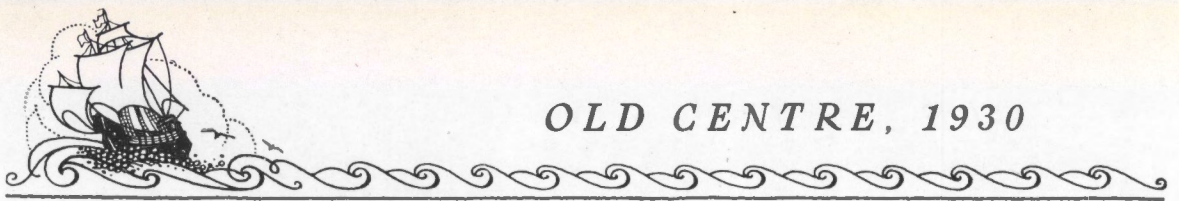


THE GYM-DANDIES



OLD CENTRE, 1930





OLD CENTRE, 1930

# CENTRE COLLEGE

DANVILLE, KENTUCKY

*Founded 1819*

*Women's Department Opened 1926*

Co-ordinate Institutions for Men  
and Women

The Same Faculty, the Same Standards  
the Same Degree

SEPARATE CAMPUS AND BUILDINGS

*Special Courses in*

Art, Music, and Home Economics

CHARLES J. TURCK, *President*



OLD CENTRE, 1930



HAVE YOUR SHOES REPAIRED

Super-Wearing Oak Leather Soles, Live Cushion Rubber Heels,  
Rapid and Efficient Workmanship, Guaranteed  
Satisfaction

CLINE'S SHOE SHOP

Phone 142

One Door West of Postoffice

DANVILLE, KY.

**WELSH-WISEMAN CO.**  
INCORPORATED ESTABLISHED 1852

One of Kentucky's Better  
Department Stores

DANVILLE, KENTUCKY

HILLIARD AND  
MARSHALL

*General Agent for  
Kentucky*

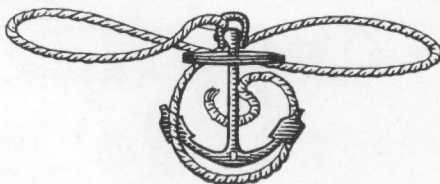
OHIO NATIONAL LIFE  
INSURANCE CO.

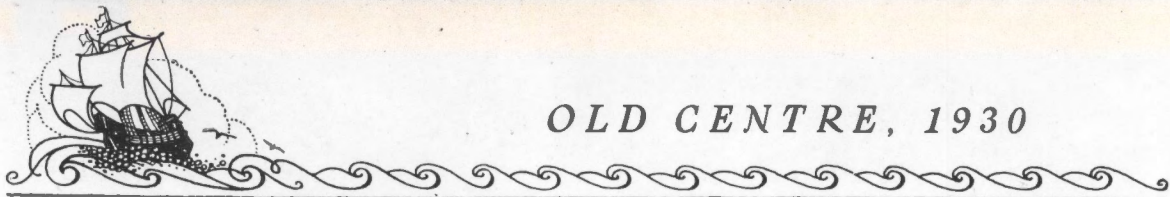
COMPLIMENTS

OF

W. H. Robertson &  
Son

*Things Men Wear*





OLD CENTRE, 1930

**SUPERIOR LUGGAGE**

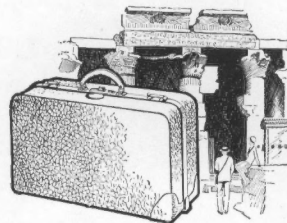
*"Student Specials"*

Strikingly Handsome—Typical College Style. The "Collegian" for Young Men and the "Co-Ed" for Young Ladies are Amazingly Popular.

Gladstones, Overnight Bags, Overnight Cases, Hat Boxes, Brief Cases

**O. A. KAYS & CO., Inc.**

*Smart Wearing Apparel for Men*



DANVILLE, KENTUCKY

The Home of Vitaphone and Movietone  
Talking Pictures

Our Policy! Best in Pictures and Shown While They Are New  
With the Newest and the Most Perfect

*Western  
Sound*

THE  
VOICE  
OF  
ACTION

*Electric  
Equipment*

**BLUE GRASS TAXI CO.**

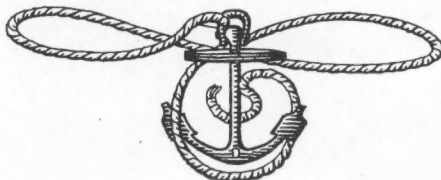
Incorporated

DANVILLE, KENTUCKY

DAY AND NIGHT SERVICE

Phone 98

*You Are Insured When You Ride With Us*







Greeting Cards, Bridge Tallies and Prizes

**Gift and Hemstitching Shop**

N. Third St., Next to Stout's Theatre

Danville, Kentucky

JUANITA VANDIVER

Phone 1228-J Hand-Made Gifts

**We Don't Claim to Be Preachers,  
But We Do Save Soles**

*Give Us a Trial*

**DANVILLE SHOE HOSPITAL**

209 West Main St. Danville, Ky.

**THE HUB, Inc.**

DANVILLE'S LARGEST DEPARTMENT STORE

Where Coats, Dresses, Millinery, Shoes, Hosiery,  
Piece Goods, Accessories, Novelties, are always  
shown in large selections.

*"THE STORE FOR K. C. W. GIRLS"*

The Newest in Graduation Presents

WATCH AND JEWELRY  
*Repairs a Specialty*

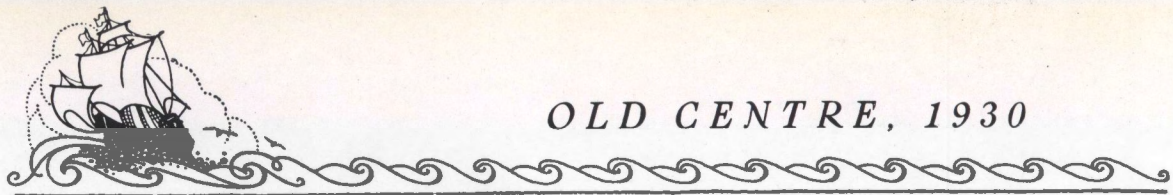
**E. H. KAHN**

Gilcher Hotel Bldg. Danville, Ky.

**H. COOMER**

Wall Paper, Paints, Picture  
Frames, Artists' Tube  
Colors





OLD CENTRE, 1930



Shari-  
The  
MASTER  
Perfume

*An Exquisite Line*

*of*

Toilet Articles,  
Candies and  
Stationery

SPOONAMORE'S DRUG STORE

*The Rexall Store*

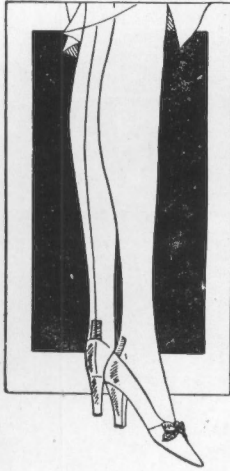
MEET YOUR FRIENDS

AT

**“THE PARK”**

ICE CREAM, SODAS, AND  
CANDY





**"Gordon" Individually Proportioned Stockings**

And secure more stocking comfort and more stocking wear. Why? Because they are designed to fit your individual proportions. Made in four styles, and one of these stockings is designed for you.

**"Gordon Petite," "Gordon Princess,"  
"Gordon Regal," "Gordon Splendide"**

*Priced \$1.50 to \$2.50*

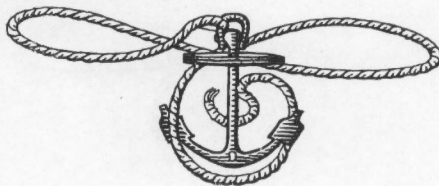
**LAWSON DRY GOODS  
COMPANY, Inc.**

DANVILLE, KENTUCKY

*College Days Are Best Remembered  
With Photographs*



**SIMMONS STUDIO**





OLD CENTRE, 1930

You Cannot Afford to Experiment When  
Your Beauty is At Stake

*Let Our Experts Do Your Work*

**ELLIS BARBER & BEAUTY SHOP**

SOUTH THIRD STREET

*Established 1895*

**STREET COSTUMES, AFTERNOON DRESSES  
EVENING FROCKS**

Can Be Kept Very Attractive and Ready to Wear By a Regular  
Patronage of Our Dry Cleaning Service

*Investigate Our Laundry Club List*

**THE DANVILLE LAUNDRY & DRY  
CLEANING COMPANY**

(Incorporated)

Phones 71 and 72 or Stop the White Truck

**THE DAILY ADVOCATE**

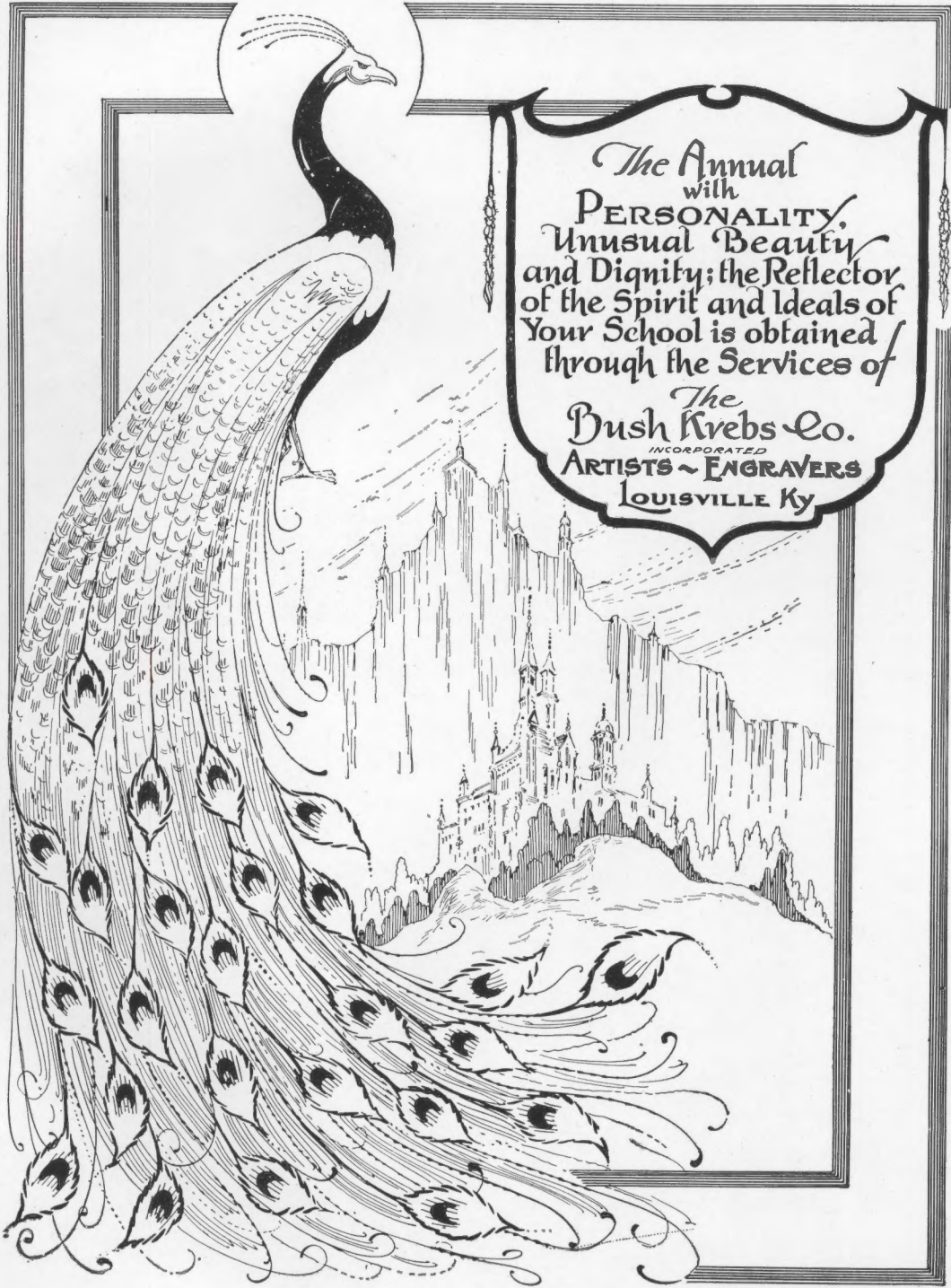
*Established 1865*

**MEMBER ASSOCIATED PRESS**

*The Staunch Friend of Kentucky College  
for Women*



OLD CENTRE, 1930




The Annual  
with  
PERSONALITY,  
Unusual Beauty  
and Dignity; the Reflector  
of the Spirit and Ideals of  
Your School is obtained  
through the Services of

The  
Dush Krebs Co.  
INCORPORATED  
ARTISTS ~ ENGRAVERS  
LOUISVILLE Ky



THIS BOOK PRINTED BY.....



THE  
WORLD'S  
LARGEST  
PUBLISHERS  
OF  
COLLEGE  
ANNUALS



**COLLEGE ANNUAL HEADQUARTERS**  
*Highest Quality Workmanship Superior Extensive Service*











