

# The Daisy

NINETEEN  
SEVENTEEN

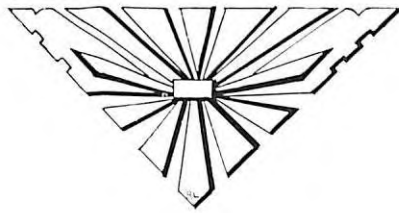


Darwin E. Swine  
June '17-

10-7-23

# The DAISY

1 9 1 7  
VOLUME TWO



PUBLISHED BY  
THE SENIOR CLASS OF KENTUCKY  
COLLEGE FOR WOMEN  
DANVILLE, KY.

## To The Daisy

A hundred times,  
Have I derived from thy sweet power,  
Some steady love, some brief delight,  
Some memory that had taken flight.

—Wordsworth





# THE DAISY.



MISS SARA C. PORTER

# DEDICATION

TO

MISS SARA C. PORTER

FOR HER INTEREST,  
LOYALTY, AND CON-  
STANT EFFORT TO  
MAKE THIS BOOK THE  
GREATEST ACHIEVE-  
MENT OF THE CLASS  
OF NINETEEN SEVEN-  
TEEN, WE DEDICATE  
THIS VOLUME OF

“The DAISY”



# FOREWORD

WE present to you in this volume of "The Daisy" the embodiment of the recollections of this college year 1916-17, believing this to be a true record of our life at K.C.W.—with all our faults and fancies, our worst and best. We give you this volume of "The Daisy" that it may perpetuate the memory of happy college associations. If we have attained this our attainment is due to the interest of friends, faculty, and students who have so willingly given us of their time and labor.





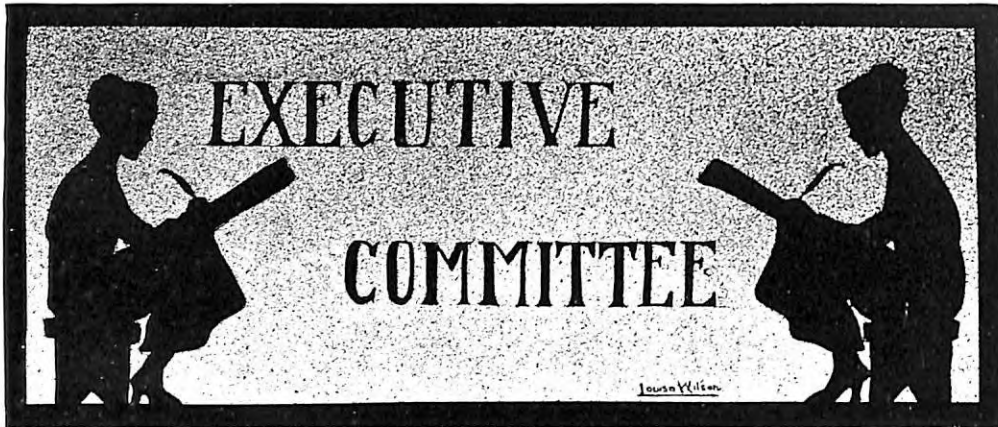


# CONTENTS

.

	PAGE
FRONTISPIECE .....	3
DEDICATION .....	5
FOREWORD .....	6
EXECUTIVE COMMITTEE "THE DAISY" .....	8
"THE DAISY" STAFF .....	9
THE PRESIDENT .....	10
THE FACULTY .....	11
SENIORS .....	19
JUNIORS .....	33
SOPHOMORES .....	37
FRESHMEN .....	41
SUB-FRESHMEN .....	45
SPECIALS .....	49
ACTIVITIES .....	53
ATHLETICS .....	69
CALENDAR .....	77
JOKES .....	83
YOUTHFUL SENIORS .....	92
ALMA MATER .....	95
ARTIST SERIES .....	96
CALENDAR OF EVENTS .....	98
APPRECIATION OF ART WORK .....	99
ADVERTISEMENTS .....	100

# The DAISY



ISABEL DARNALL . . . . . *Editor-in-Chief*  
ELIZABETH BUCKNER . . . . . *Business Manager*  
LOUISE LEE . . . . . *Assistant Business Manager*  
RUTH THOMAS . . . . . *Subscription Editor*  
MARGARET GREENLAW . . . . . *Joke Editor*  
MARTHA RIKER . . . . . *Club Editor*  
LOUISE WILSON . . . . . *Art Editor*  
LORENE LATTA . . . . . *Literary Editor*



STAFF

RUTH THOMAS

ISABEL DARRAIL

LOUISE LEE

MARGARET GREMLAW

ELIZABETH BUCHNER

MARTHA BREMER

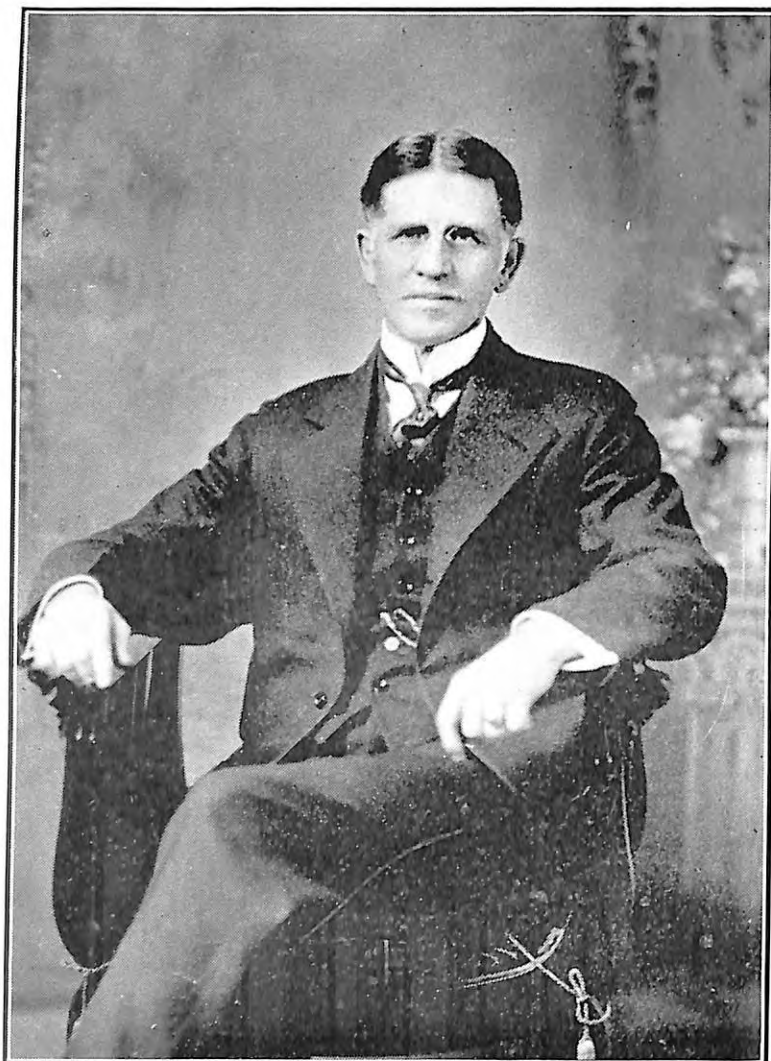
LORENE LATTI

LOUISE WILSON

The

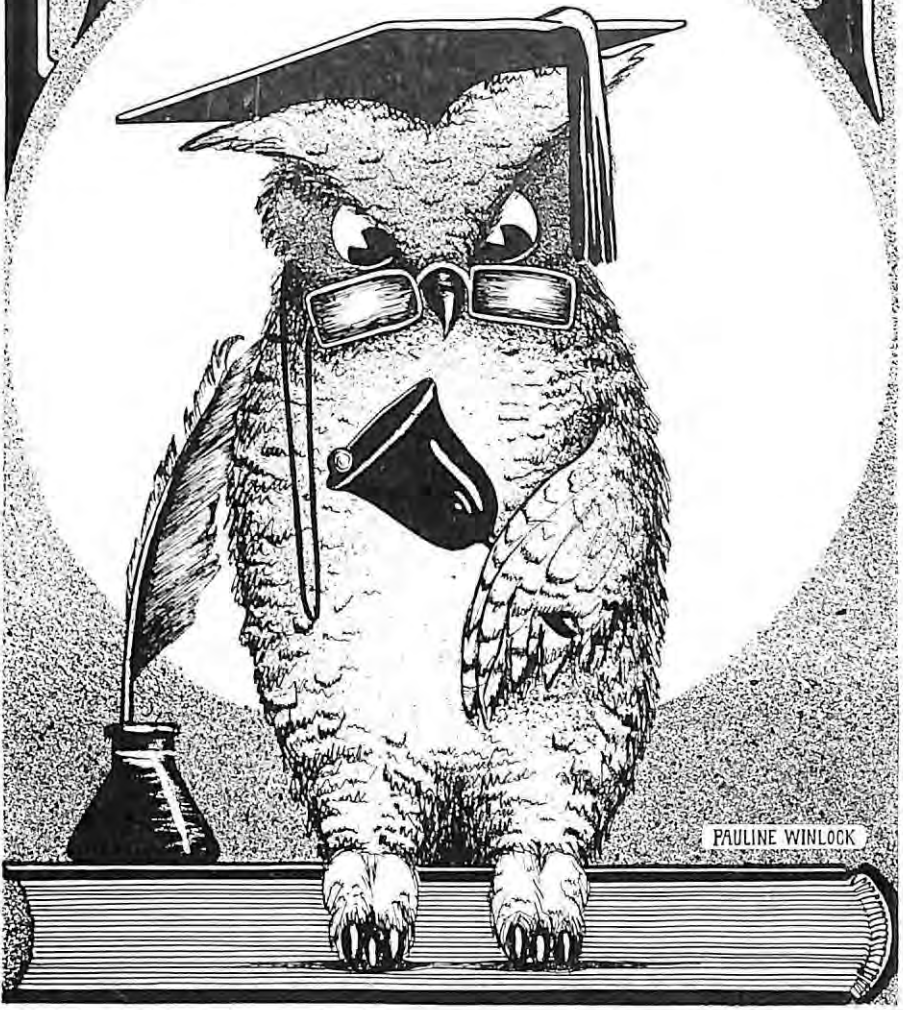


DAISY



M. MARSHALL ALLEN, D.D., *President*  
A.B., Centre College, 1884; Pastor Presbyterian Church, Ishpeming,  
Michigan, 1895-1915; President, Kentucky College  
for Women, 1915—.

# FACULTY



PAULINE WINLOCK

The  DAISY



RUTH ANDRUS, A.M.

*Dean*

A.B., A.M., Vassar College; Columbia University, 1908-9; Instructor in Latin, Greek, and History, Taconic School, Lakeville, Conn., 1909-12; in Latin, Putman Hall, Poughkeepsie, N. Y., 1912-13; in Latin, Barstow School, Kansas City, Mo., 1913-14; in Latin, Kentucky College for Women, 1914-15; Dean, Kentucky College for Women, 1915—.



ANNA HARRIET BLAKE, A.M., Φ Β Κ

*Latin*

A.B., Vassar College, 1912; A.M., University of Chicago; Graduate Fellow, University of Chicago, 1912-15; Instructor in Latin, Kentucky College for Women, 1915—.



MRS. LILLIAN H. BUCHANAN

*Housekeeper*



ELLEN R. DAVISON

*Elementary Department*

Summer School of South, Knoxville, Tenn., 1915; Instructor in Hopkinsville Public Schools; Teacher in Elementary Department, Kentucky College for Women, 1916—.

The  DAISY



NIDA DICKEY  
*Primary Department*

University of Cincinnati; Lake Chautauqua; Teacher in Covington Public Schools, Primary Department, 1910-15; Kentucky College for Women, 1916—.



HAZEL DESSERTY

*Violin, Piano, Theory, History of Music*

Graduate Cincinnati Conservatory of Music; Instructor in Violin, Piano, Theory, History of Music, Kentucky College for Women, 1915—.



MARY P. FISKE, A.B.  
*Science*

A.B. Mount Holyoke College; Radcliffe College, one year; Harvard Summer School; Teacher of Science in New England High Schools two years; in Newark, N. J., six years; Kentucky College for Women in 1905—.



IRENE DICKSON  
*Intermediate Department*

Graduate of Ohio State Normal, Miami University; Teacher in Intermediate Department, Kentucky College for Women, 1913—.

The  DAISY



ESTHER B. FUNK  
*Home Economics*

Findlay College, 1912-13; Graduate Thomas Normal Training School, 1914-15; Head of Home Economics Department at Kentucky College for Women, 1915—.



ELIZABETH GREENE, A.B.  
*Physical Director*

A.B. and Physical Training Graduate, Oberlin College, 1916; Physical Director at Kentucky College for Women, 1916—.



GERTRUDE VERENA GATH, A.B.  
*Physics and German*

A.B. University of Wisconsin, 1915; Instructor in Physics and German, Kentucky College for Women, 1915—.



LIZZIE RHETTE HERNDON  
*Pianoforte*

Graduate of Cincinnati Conservatory of Music, 1913; Pupil of Ernest Hutcheson, Chautauqua, N. Y., 1916; Instructor of Pianoforte, Kentucky College for Women, 1913—.





MODESTY  
FORBIDS

LILLY L. HUNTER  
*Presiding Teacher*

Graduate of Chicago Free Kindergarten Association, Chicago, Ill.; Presiding Teacher at Kentucky College for Women, 1913—.



FANNIE GAY INGELS  
*Intermediate Department*

Hazel Green Academy, Bourbon County; Principal Intermediate Department, Kentucky College for Women, 1907—.



MARGARET ELIZABETH JOHNSON  
*Home Economics*

Graduate Kentucky College for Women, 1916; Instructor in Home Economics Department, Kentucky College for Women, 1916—.



ANNA D. LEWIS, Ph.D.  
*Mathematics*

A.B., Ph.D., Carleton College, Northfield, Minn., 1897-01; Instructor in the Academy connected with Carleton College, 1901-03; Professor of Mathematics in Albert Lea College, Albert Lea, Minn., 1905-06, 1913-15; Instructor in Astronomy in Mount Holyoke College; Student in Summer Course Teachers' College, Columbia University, 1916; Instructor in Mathematics in Kentucky College for Women, 1915—.

The  DAISY



MARGUERITE DUDLEY MABLEY, A.B.  
*History and English*

A.B., University of Michigan; Instructor in History and English, Kentucky College for Women, 1915—.



JESSIE I. MILLER, A.F.  
*French and German*

Alliance Française, Summer of 1910; University of Munich, 1910-11; Sorbonne, 1911-13; Private Instructor French and German, 1913-14; Instructor French and German, Kentucky College for Women, 1915—.




PAULINE EATON OAK  
*Expression*

Graduate of the Leland Powers School of the Spoken Word; Instructor in Expression, Kentucky College for Women, 1915—.



SARA C. PORTER  
*Voice*

Studied at Troy Conservatory of Music; Pupil of Mrs. Theo. Toedt and Charles N. Granville, New York City; former Soloist, Trinity Methodist Church, Albany, N. Y., First Presbyterian Church, Troy, N. Y.; Instructor in Voice, Kentucky College for Women; Soloist, Second Presbyterian Church, Danville, Ky., 1914—.

*The*  **DAISY**



**GLADYS TAMZIN SHAILER**  
*Director of Music*

Graduate of the Cincinnati Conservatory of Music; Instructor in Piano, Cincinnati Conservatory of Music, 1909-10; Instructor in Piano, Kentucky College for Women, 1910-12; Director of Music, Kentucky College for Women, 1912—; Organist and Choir Director, Second Presbyterian Church, Danville; Director of the Danville Choral Club.



**AGNES MORTON SHAW, M.A.**  
*English*

B.A., Wellesley; M.A., Columbia University, 1913; Instructor in English, St. Johnsburg Academy, 1898-1904; Gordon School, Philadelphia, 1909-10; Washington Irving High School, New York City, 1910-11; Director of Education, International Institute, New York City, 1913-14; Secretary of Education, Cleveland Y. W. C. A., 1914-15; Head of English Department, Kentucky College for Women, 1915—.



**ELIZABETH MORRIS STEEL**  
*Secretary*

Ohio University, 1909; Mann's College of Short-hand, Columbus, Ohio; Western College, 1912-14; Secretary, Kentucky College for Women, 1914—.



**JENNIE M. STREVIG**  
*Bible and Psychology*

Graduate School of Religious Pedagogy, Bible Teachers' Training School, 1912; General Secretary Y. W. C. A., York, Pa., 1906-09; Instructor in English Bible and Psychology, Kentucky College for Women, 1912—.

*The*  *DAISY*



BEULAH M. TERHUNE, A.B.

*Intermediate Department*

A.B., Beaumont College, Eastern Kentucky State Normal, 1908; University of Virginia, 1912; Instructor in Intermediate Department, Kentucky College for Women, 1913—.



MARY C. VAN PELT, R.N.

*Resident Nurse*

Graduate of the John N. Norton Memorial Infirmary, Louisville, Ky.; Registered Nurse, State of Kentucky; Private Duty, Louisville, Ky.; Resident Nurse, Kentucky College for Women, 1915—.

The



DAISY

# SENIOR



LOUISE WILSON

## The Senior Class

Colors: White and Green

Flower: Pink Rose

Motto: "He conquers who conquers himself."

### OFFICERS

RACHEL LEE . . . . .	<i>President</i>
MOLLIE WORTHINGTON . . . . .	<i>Vice-President</i>
KATHERINE BAILEY . . . . .	<i>Secretary</i>
MARTHA RIKER . . . . .	<i>Treasurer</i>
MARION BOGGS . . . . .	<i>Historian</i>

### HONORARY MEMBER

SARAH C. PORTER



SAM WELLS, *Mascot*

## Senior Class

RACHEL ELIZABETH LEE

Covington, Ky.

"RACH"

President Class '16-'17; Honor Board; Delegate to Blue Ridge Conference; Y. W. C. A. Cabinet; Mistress of Robes, Tudor Literary Society.

*"There's nothing half so sweet in life  
As love's young dream."*

In Rachel we have an example of great development. She came to K. C. W. three years ago, a shy, domestic little creature, with an aversion to man bordering on insanity. This feeling seems to have changed, for Lebanon now holds an unknown charm for her. Rachel is a girl upon whom we feel we can depend, for she treats her duty not lightly.



KATHERINE LOUISE BAILEY

Bagdad, Ky.

"KATE"

Secretary Class '16-'17; Y. W. C. A. Cabinet, '16-'17; Vice-President Athletic Association, '16-'17; Honor Board, '15-'16; Delegate to Blue Ridge Conference.

*"Her eloquence would draw iron tears from  
Plato's eyes."*

Our self-elected Minerva! We must admit, however, that she is a great satisfaction to the instructors, for when a question has gone around the class with nothing but bone-headed answers, we feel sure that when it gets to Kate she will stop it, and the teacher heaves a sigh of relief.



## Senior Class

MARION ALEXANDER BOGGS

Danville, Ky.

President Student Council, '15-'16; Class President, '15-'16; Class Historian, '16-'17; Mistress of Ceremonies, Tudor Literary Society.

*"Must I work? Oh,  
What a waste of time."*

She has a habit of looking wise and has succeeded in keeping up the illusion. If the expression, "Music hath charms to soothe the savage breast," be true, Marion need never fear the most savage of them, for her ability as a musician is beyond reproach. Perhaps she would make the Class of '17 famous in the world of music, if her social duties and Centre's fair lads would give her the spare time.



SARA ELIZABETH BUCKNER

Campbellsville, Ky.

"LIZ"

Business Manager "Daisy," '16-'17; Y. W. C. A. Cabinet, '16-'17; Honor Board, '16-'17; Second Basketball Team, '15-'16; First Basketball Team, '16-'17.

*"Never trouble trouble till trouble troubles you."*

As business manager of the annual, Elizabeth has certainly won her spurs. She goes at everything with a vim which assures successful completion of that thing, and we might say here that she has gone at many things in the past year. She is very prominent in athletics, but, gentle reader, please do not infer that "Liz" is strictly a business woman, for—thereby hangs a tale we must not tell.



## Senior Class

MINNIE PARKER DURHAM  
Danville, Ky.

*"She takes me prisoner with her tongue."*

Minnie Parker has made herself famous asking foolish questions in chemistry and thoroughly exasperating Miss Fiske. Talking is to her what food is to the baby. She is never without something to say, and isn't afraid to say it. Besides this distinction she holds another—she outclasses the entire school in height, towering far above us into the clouds. Nothing but good can be said of her record as a friend or a student.



ISABEL THOMSON DARNALL  
Mayslick, Ky.

"ISSIE"

Editor-in-Chief "Daisy," '16-'17; Magazine Editor "Kencowom," '16-'17; Y. W. C. A. Cabinet, '16-'17; Delegate to Blue Ridge Conference.

*"While a lady speaks  
There's hope, but she didn't even sneeze."*

Although "Issie" isn't so romantic-looking, she certainly has that element in her makeup, else how could she write such stories of romance? She has that wonderful faculty of producing stories right off the reel, which makes her indispensable to the magazine. She seldom gives expression to her thoughts orally, but her pen is her weapon.



## Senior Class

ELIZABETH AGNES EASON

Danville, Ky.

*"Exhausting thought and living wisdom with each studious hour."*

The type who enters the arena without much noise and pursues her course without bothering her neighbors with her troubles. She believes in asserting her convictions fearlessly, and, "though vanquished, will argue still." Those cheeks of hers, fair as the dawn of day, would certainly put roses to shame. She has a disposition in which energy and good sense blend; a mind blessed with the light of understanding and power of concentration.



MAUDE GRIFFITH

Auburn, Ky.

"MAUDIE BELLE"

President Student Government, '16-'17; Y. W. C. A. Cabinet, '16-'17; Honor Board, '15-'16.

*"She talked, ye gods! how she talked!"*

A human alarm clock, whose each alarm produces convulsions of laughter among her listeners. "Maudie Belle" certainly makes the most of her time, for it is agreed that she can talk faster and get in more words to the square minute than anybody in Christendom. As President of the Student Government Association she has become acquainted with "the straight and narrow way," a path of which she had been ignorant.

## Senior Class

### MARGARET CHEAIRS GREENLAW Columbia, Tenn.

President, Dramatic Association, '16-'17; Honor Board, '15-'16; "Daisy" Staff, '16-'17.

*"She sang and carolled out so clear  
That men and angels rejoiced to hear."*

The Melba of the class, of whom we are justly proud. We shall not humiliate ourselves by saying what we would have done without her to lead us in all our vocal projects. Although from the city, Margaret enjoys nothing more than those week-end visits in the country. Perhaps it is the lovely rural scenery that endears them to her—and perhaps there is another reason.



### LORENE LATTA Geneva, Ky. "RENE"

Class Treasurer, '16-'17; Associate Editor "Kencowom," '15-'16; Honor Board, '16-'17; Y. W. C. A. Cabinet, '16-'17; Editor-in-Chief "Kencowom," '16-'17; "Daisy" Staff, '16-'17.

*"Serene, and resolute, and still,  
And calm, and self-possessed."*

In Lorene we see a calm, self-possessed young woman who goes serenely upon her way through life—attending strictly to her own affairs. Lorene has a high sense of duty. She can always be depended upon, and when one leaves anything in her competent hands to be done, she may go away confident that it will be carried out to the best of Lorene's ability.



## Senior Class

LOUISE CLEVELAND LEE  
Covington, Ky.

"SONNIE"

President Y. W. C. A., '16-'17; Honor Board, '15-'16; Daisy Staff, '16-'17; Delegate to Blue Ridge Conference; Second Basketball Team, '15-'16.

*"Of manners gentle, of affections mild;  
In wit a woman; simplicity, a child."*

Though young in years, she already exhibits that trait of Napoleonic leadership. She has a choice assortment of business sense, to which she has given visible expression as Y. W. C. A. President this year. Usually gracious and reserved, you never realize the "Irish wit o' her" until you get her alone, for she is rather timid when in public. With her ability as a violinist we expect great things of her.



MARTHA MCELROY MCDOWELL  
Danville, Ky.

"MATT"

Vice-President Class, '16-'17; Class Historian, '15-'16.

*"She is pretty to walk with, and witty to talk to,  
and pleasant, too, to think on."*

Martha is one of our A students and believes that a smile will get you more than a frown. Very good logic, but when that smile breaks into that delightful little giggle (which it is constantly doing), the sound is sublime and musical. Whether she is expounding Horace's philosophy or threading the intricate paths of a chemistry experiment, she giggles. She has a personality winning enough and a mind bright enough to insure her success.



Senior Class

MARY ELIZABETH MCDOWELL  
Danville, Ky.

*"How happy is he born and taught  
That serveth not another's will."*

A girl of domestic frame of mind, who intends to teach school, but probably that is as far as she will ever get. It is to be regretted that her course in Home Economics has kept her rather apart from us and delayed our appreciation, but we have been with her enough to recognize her ability.



MARTHA LETCHER RIKER  
Harrodsburg, Ky.

"MART"

Treasurer Class '16-'17; Treasurer Athletic Association, '15-'16; President Athletic Association, '16-'17; Honor Board, '15-'16; "Daisy" Staff, '16-'17.

*"The glass of fashion, and mould of form,  
The observed of all observers."*

She always looks as though she had just stepped out of Vogue, so immaculate and modish is she. She has a way about her of going her own sweet way, nor do the horrors of Honor Board affect her in the least. The mystery connected with her, however, is that she calls on Mrs. Welch two or three times per week and extends those calls to the duration of an entire afternoon.

## Senior Class

RUTH CUMMINGS THOMAS  
Maysville, Ky.

"TOM"

Vice-President Y. W. C. A., '16-'17; "Kencowom" Staff, '16-'17; "Daisy" Staff, '16-'17; Delegate to Blue Ridge Conference.

*"Size is not everything."*

Ruth's office as postmistress is a great burden to her, for it invariably makes her late to chemistry—and how sorry she is! If any mischief is brewing you can depend upon it, if she is not engineering it, she is a heavy booster of the project. Star-gazing seems to be an eccentricity of hers, but when she indulged in it on the High Bridge Cliffs it was more than the officials could stand with composure. She is our class musician, and, goodness knows, what would we have done without her?

RUTH WILSON  
Danville, Ky.

*"On with the dance; let joy be unconfined."*

Behold here the class Pavlova. Dancing is her art, and never is she happier than when "tripping the light fantastic." She has done her utmost to promote the feeling of brotherly and sisterly love between Centre and K. C. W. by welcoming representations of both at her home. She is most popular in both colleges.





## Senior Class

ETHEL RUPLEY  
Danville, Ky.

*"No ill have we to say of her."*

We hardly know Ethel, because the fact that she is taking the Home Economics course with the post-graduates has separated her from us. We do know her, however, to be a prodigy in the above-mentioned course. She pursues the even tenor of her way without much gusto and with a smile for everyone.



LOUISE WILSON  
Danville, Ky.

*"Daisy" Staff, '16-'17; Recorder, Tudor Literary Society, '16-'17.*

*"She sketched; the vale, the wood, the beach  
Grew lovelier from her pencil's shading."*

Louise would be liked with or without her handsome touring car of the Ford variety. A shark in history, if she can think of nothing to say in answer to the teacher's query about some historical character, she knows she is absolutely safe in saying, "He died"—and she knows how to do much else.



## Senior Class Songs

### ALMA MATER

(Tune: Come Back to Erin.)  
Down in Kentucky at fair K. C. W.  
There is a class so renowned from its birth  
That all the others, before it and after,  
Seem but as dross to the gold of its worth.  
But when they came first to dear K. C. W.  
They were but Freshmen, so simple and gay,  
Longingly thought they of home and glory,  
Thought of the days then so far, far away.

O may its guardian, the dear Alma Mater  
Ever remember its spirit and worth;  
Green may its fame in our good school be planted,  
White may its virtue e'er be on the earth.  
When in the future we sit by our firesides,  
Thinking and dreaming of old Seventeen,  
Then shall our hearts turn to dear friends and  
classmates,  
Ever remembering the old "White and Green."

### CHORUS

Then fly with my fancy to 19 and 17,  
Come back to college and glad days of youth.  
Laud 1917 and praise its rare virtue;  
Dear Alma Mater will vouch for its worth.

### CAMPUS SONG

Under the shade of our campus trees,  
Friends, we are singing our songs to thee;  
Come now and hear, listen and cheer;  
This is our joyous tune—  
Come ere the moon in the night is set;  
Put on your rubbers, the grass is wet.  
Juniors, make haste! Soph'mores, don't waste!  
Freshman, be coming soon!

### CHORUS

Open your window, come down to me,  
Stroll in the shade of the old campus tree;  
Friends, we are singing, singing to thee,  
Singing at old K. C.

## Senior Class History



NCE as I slept, dreaming, there came a voice from out the shadows. I listened spellbound, wrapped in wonder, to the voice which said: "I am the Muse of History. I now come to pronounce it your duty to write for history's treasure the story of the Class of 1917."

That long and tedious voyage up the stream of learning began on a September day at Caldwell College, ten years ago. Mrs. Noel brought "Matt" and a few more of us over from "Prep" and installed us in College. We had troubles that Freshman year.





# The DAISY

Teachers came and teachers went, but "Seventeen" onward marched until the Freshman year was passed forever.

Next came a year of great upheaval, for Dr. Acheson left us and sorrow reigned in our hearts. But Mrs. Riker came to be a worthy guide for our future destinies. That year we were a "working class," for we all strove, oh, so hard to "get out of exams" and most of us succeeded.

Another upheaval in administration, and Dr. Allen came to guide our boat into the steady, quiet course which it is still pursuing.

We chose Miss Porter as our friend and counsellor. To her we have always turned for inspiration for class songs. When any frolic is on foot Miss Porter is always there to give it "pep."

We increased greatly in number our Junior year. Maude, "Liz," Lorene, Margaret, Ruth, Katherine and others came to widen our circle. We realize now we never could have become so famous a class without them.

The greatest social event of this year was our Junior reception. This affair was given for the Seniors, and they knew it, but because we forgot to send them a Harcourt & Co. engraved invitation, those modest Seniors rumored it about that they were not coming. For this reason we established the custom of formally presenting the invitation at the chapel service.

Soon the year rolled around, and September with its mingled store of joy and regret brought us momentary annoyances, but could not cause us to forget that we were happy—we were SENIORS. We had to work, especially did Marion work in that laboratory. Even her noon hours were spent there instead of at the Shop Perfect.

We wisely chose Rachel as our President, and she kept us pushing right along. Without the "Lee girls," what could we have done?

We have tried to make our Annual a "Daisy," and we wish to say that the glory is due in great part to our hustling little business manager, "Liz," who has devoted all her spare moments to boosting it along, and to Isabel, whose steadiness and ability can always be depended upon.

We feel that the years spent at old K. C. W. have been the happiest and most profitable of our lives and that our dear Alma Mater deserves all our loyalty and devotion, so we—

"Give a cheer for 1-9-1-7  
Till the echoes reach the skies,  
As we march across our campus,  
Let a loyal shout arise;  
Every heart in accord rejoices,  
And we cast away all care,  
As we sing with ringing voices  
For the colors White and Green."

The



DAISY



The



DAISY





## Junior Class

Colors: Pink and Green

Flower: Killarney Rose

Motto: Be square.

### OFFICERS

ELIZABETH ASBURY . . . . .	<i>President</i>
ANNA KINARD LETCHER . . . . .	<i>Vice-President</i>
EDNA VOGEL . . . . .	<i>Secretary</i>
DOROTHY WATSON . . . . .	<i>Treasurer</i>
LOIS DRAKE . . . . .	<i>Historian</i>

### HONORARY MEMBER

MISS ANDRUS

### MEMBERS

CLARA ANNE ARNOLD	
ELIZABETH T. ASBURY	
LOUISE BERRY	
ELIZABETH CHEEK	
IRIS CRUTCHER	
ALTA DENNY	
LOIS DRAKE	
EVELYN JEFFERS	
ANNA KINNAIRD LETCHER	
ELIZABETH FRANCES LITTLE	
MINA WILSON	
MARY SMOCK	MARY ELEANOR LONG
NANCY SMOCK	GRETCHEN MUELLER
ROE SPRAGUE	KATHERINE PEEBLES
EDNA CAROLINE LOUISE VOGEL	LIDA RAINEY
FRANCES DOROTHY WATSON	MINA RANKIN

The  DAISY



JUNIOR CLASS

## History of the Junior Class



LONG, long ago, when the world was very young, a Freshman class entered Caldwell College. Buffeted, but victorious, it had won its way past the various rocks and shoals of "Prepdom," and, far from dreading the unknown paths that lay before it, looked eagerly ahead for new fields to conquer. The fields were easily found, but, alas, conquest was more difficult.

In Prep our numbers and audacity had made us noted, our class was at once the pride and torment of those members of the faculty with whom we came in contact. We entered college, therefore, not meekly and silently, as "Freshies" should, but with noisy possession-taking and an inflated sense of our own importance.

Scarce had we freed ourselves from other dragons when that terrible rule which demanded examinations and could not be bribed by the excellence (?) of our daily grades fell upon us. Many rose slowly from the ruins of our hopes, plans and skillful bluffing; many did not rise at all.

That year 1914 was a succession of shocks. Caldwell College became Kentucky College for Women. The faculty suffered spasmodic changes from time to time, especially in the French department. At midyears we lost our beloved President. He was succeeded by Mrs. Riker, under whose care we finished that stormy year.

During the next year our class, much decreased in size, met with various misfortunes. Other schools lured until we have representatives at Smith, Wellesley, Bessie Tift, Randolph-Macon, Sayre and Georgetown.

The heart of one of our members turned from prosaic textbooks to moonlit Tennessee; and "Love's Young Dream" made school tasks so distasteful that they were soon abandoned.

Examinations, stony-hearted teachers, new and unheard-of studies proved deadly traps. Some unfortunates fell by the wayside, a number of geniuses (?) bluffed their way into the Senior class, and in the fall of 1916 there remained but two war-worn and weather-beaten survivors of the gallant band of twenty that had matriculated so gaily in 1913.

Like woeful wraiths, we crept about the scenes of our departed glory. Where, oh, where were the athletic, scholastic and social stars that had made our class so famous? Alas, they were gone, and only echo sadly answered "Where?"

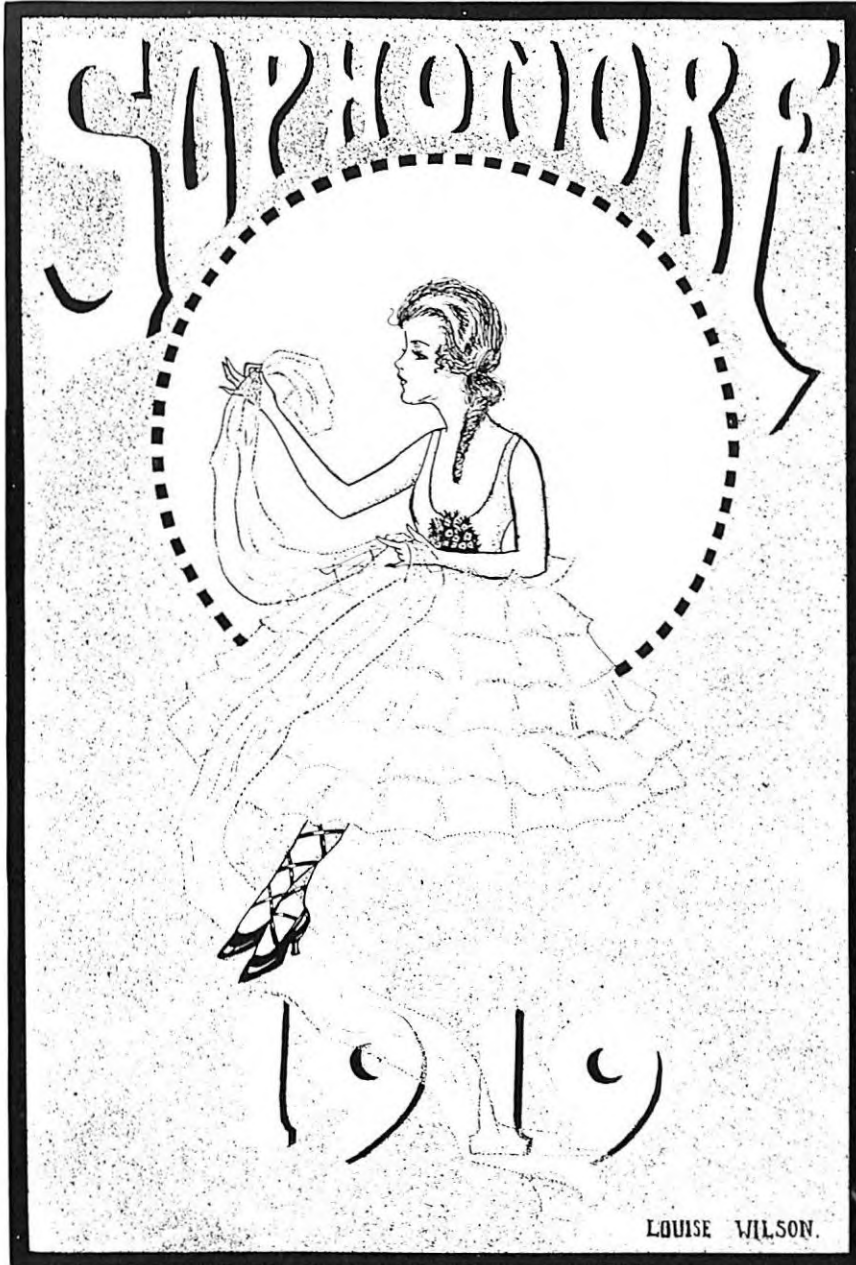
But our lonely wanderings were not destined to endure. What was our joy to find ourselves caught up into a new galaxy and our empty ranks filled by new and shining lights. Thus the Class of '18 has invaded the broad fields of Juniorhood, not as a worn remnant, but a fresh, numerous and eager band.

Proud of its memories of past splendor and warmed by present prosperity, sheltered by the kindly care of Miss Andrus, and the tender guardianship of Dr. Allen, the Class of 1918, once again strong, hopeful and ambitious, now marches steadily on toward the dreamed-of dignity of Seniorhood and the far-off goal of all toil—graduation.

The



DAISY





## Sophomore Class

*Colors:* Purple and White

*Flower:* Wood Violet

*Motto:* "Grod adest memento compenere aequus."

### OFFICERS

ANNIE LAURIE WOMACK . . . . . *President*  
THERESA McMAKIN . . . . . *Secretary and Treasurer*  
ZILLAH REDD . . . . . *Historian*

### HONORARY MEMBER

MISS GATH





Sophomore Class

MEMBERS

- RACHEL HOOVER
- THERESA MOORE
- THERESA McMAKIN
- MARTHA BALL RATLIFF
- ZILLAH REDD
- SARA ROBINSON
- ANNIE LAURIE WOMACK



## Sophomore Class History

**W**E are few, but happy and proud. Our 1919 has multiples of three. We believe this means good luck for both ourselves and our teachers. We have no history. We are making it as rapidly as possible. We are doing something: we made our own design for our rings. This shows we have some ability. Please wait to see other evidence, remembering "we are seven," another lucky number.

"Seven and nine and three,  
These are "we,"  
Lucky number bringing fame,  
So wait and look for our great name  
Of Nineteen and Nineteen—  
Proudest class that ever has been."



*The* DAISY



## Freshman Class

*Class Motto: "Esse non videri."*

### OFFICERS

ISABELLA GIVENS . . . . .	<i>President</i>
MARJORIE KEVIL . . . . .	<i>Vice-President</i>
MARY LEWIS EDELEN . . . . .	<i>Secretary</i>
FLORENCE BERRY . . . . .	<i>Class Song-teacher</i>
HENRIETTA ROGERS . . . . .	<i>Historian</i>

### HONORARY MEMBER

MISS BLAKE



Freshman Class

MEMBERS

FLORENCE BERRY  
MARY LEWIS EDELEN  
ISABELLA GIVENS  
MARJORIE KEVIL  
HENRIETTA ROGERS

## Freshman Class History



OMEWHERE in the annals of Time there is an adage that children should be seen and not heard. But that adage has a corollary which defines the limit of that same childhood as three years, and so we are sure that we are safely beyond all reproach when we announce ourselves in print this year for the first time as the Juniors of the Preparatory Department of K. C. W., or, better still, the Freshmen of Kentucky College for Women.

Our past history, though today a closed book, has many brilliant pages and the walls of K. C. W. still ring with the sound

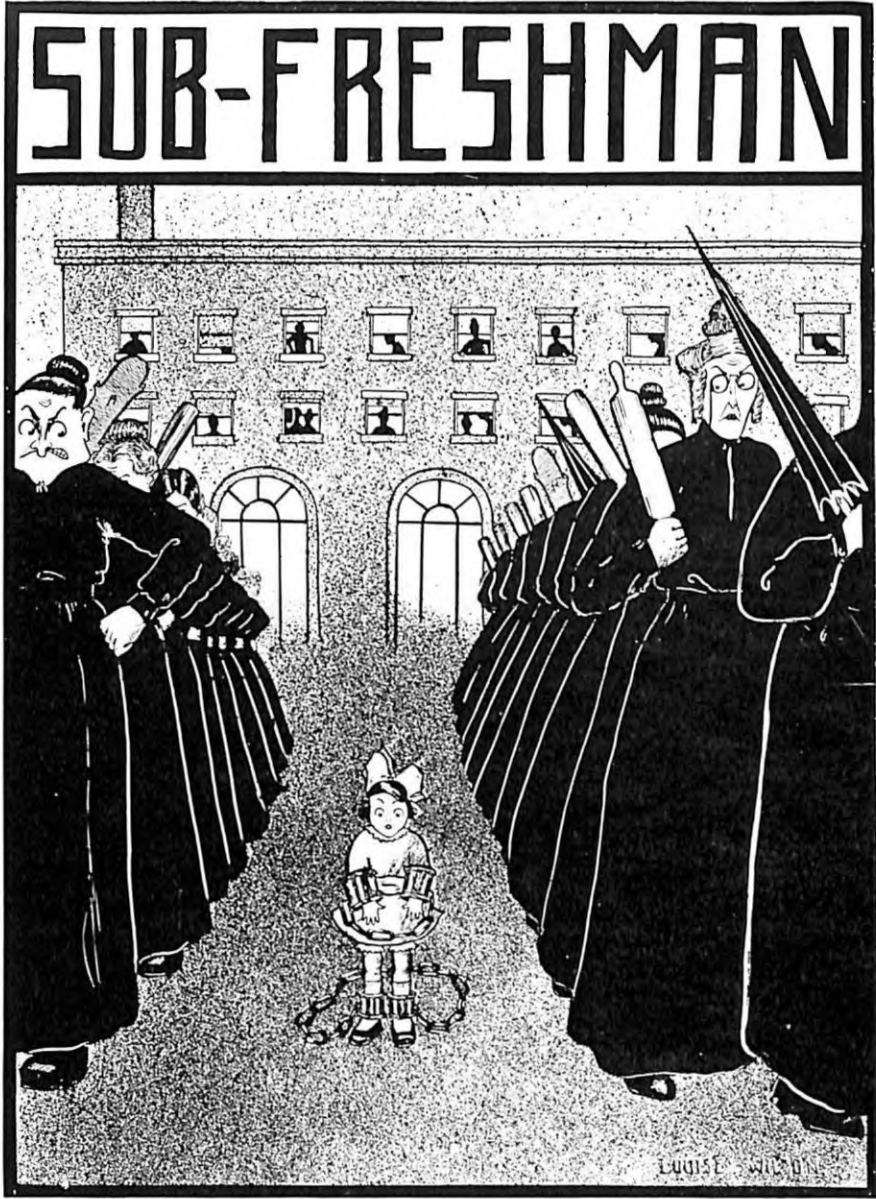
"We're the gay young Sophomore class,  
We're the plucky Sophomore class,  
The very best Sophomore class at old K. C."

But now that we have made our formal debut, you hear us gaily sing

"Make way for us now and our laugh and song,  
We are the Freshmen as we march along.  
Rah! for the Freshmen,  
Rah! for 1920—  
Come what may on any day,  
It's nineteen-two-o."

Though we are only five in number, a few of our fellow-members having fallen before the fearful onslaughts of Latin and Math, we are all stars in our own lines. At debating, Isabella bids fair to be a second Mrs. Pankhurst, while Florence Berry will soon rival Tetrizzini. Henrietta is the prodigy of the school in her shark-like ability to consume facts. Marjorie and Mary Lewis are winning fame in the field of basketball, and we expect them to win for K. C. W. the state championship.

With this start, you may look for an unusual class when we become Seniors.





## Sub-Freshman II

### MEMBERS

MARY CARLYLE BIRD  
PAULINE BOGGS  
STELLA CAMPBELL  
LYDIA CARR  
FANNIE KELLAMS  
MINNIE BRUMMAL LEWIS  
MARTHA LOWRY  
LILLIAN MOORE  
MARY VIRGINIA PERRY  
MARY OWSLEY STONE  
FRANCES STONE





## Sub-Freshman I

### MEMBERS

ESTHER BAKER

AMELIA FOX

ELIZABETH FOX

DOROTHY GANFIELD

FRANCES GLASS

IDA JOHNSTON

FRANCES KINNE

JANE MCCALLAN

ETHEL MCGUFFEY

DOROTHY REID

ELIZABETH TEWMEY

RUTH TUCKER

GLADYS WAGGENER

FLORENCE YOUNG

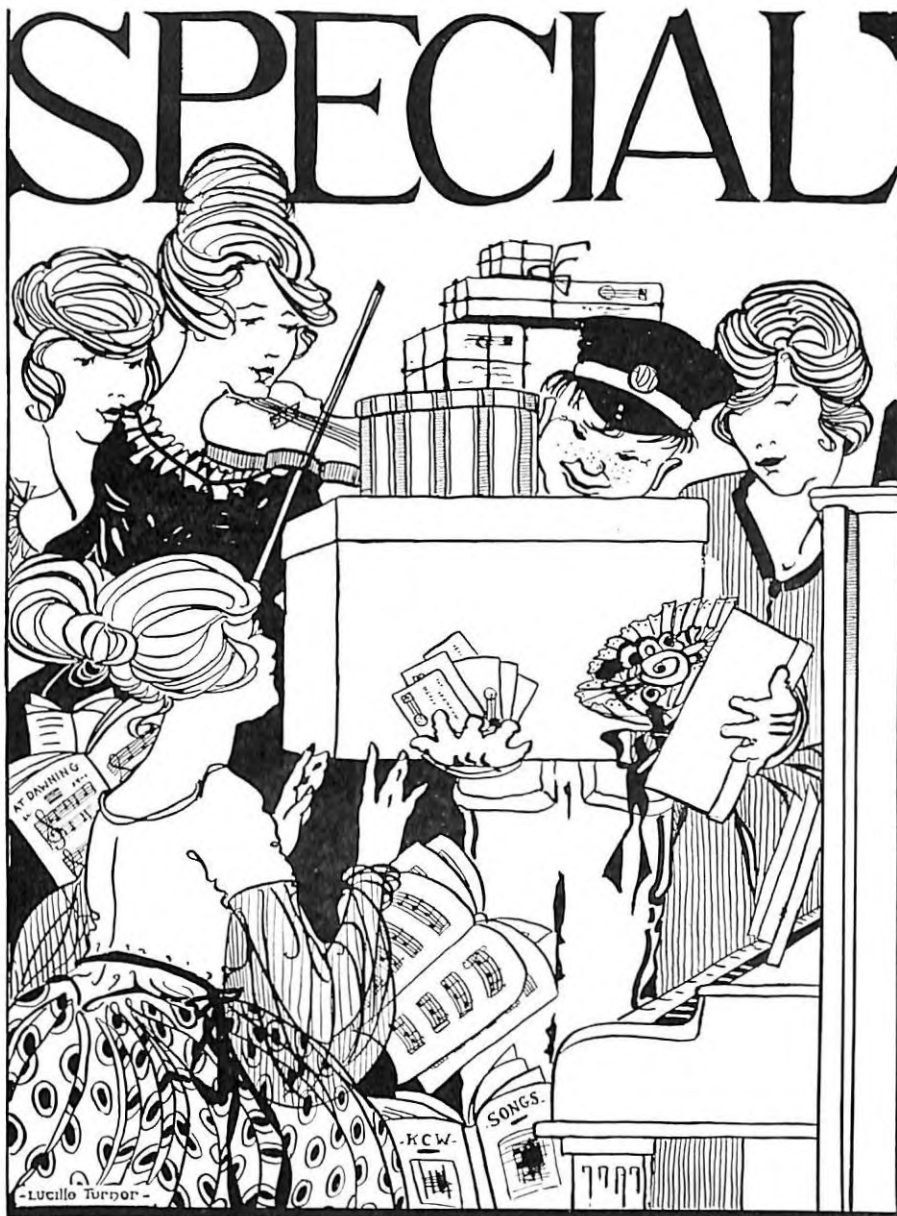


*The* DAISY

When the Freshman's Prose is done, and notebooks finally close;  
When Geometry figures have danced their last, and Cicero's ceased to pose,  
She shall rest, and, faith, she shall need it—rest for a month or two—  
Till again the school shall call and put her to work anew.

And she who has studied shall pass: she shall pass one step up the stair;  
She shall know the joys of further woe—Virgil, Burke, the Physics nightmare.  
She shall find it's one glorious grind—just a difference of kind;  
She shall work for a year and always be weary, but never mind.

And those who have ceased shall stand and scorn  
And laugh in greatest joy—visions of work left undone—  
But short will be the glee of those Freshmen still, for time and life will show  
Life is just one glorious school—a struggle to conquer a foe.





## Special Class

Colors: Blue and Gold

Flower: Mrs. Ward Rose

Motto: "Plus Ultra."

### OFFICERS

ELLEN RUBY . . . . . *President*

NICHOLI BRENT . . . . . *Vice-President*

MARCIA KEYES . . . . . *Secretary and Treasurer*

NANCY MUIR . . . . . *Historian*

### HONORARY MEMBER

MISS MILLER



## Special Class

### MEMBERS

CONSTANCE ALEXANDER

NICHOLI BRENT

ELIZABETH DOOLEY

LEONORE HURD

MARCIA KEYES

GRACE LEACH

LUCILE MITCHELL

NANCY MUIR

LEILA PENN

MARTHA PIERATT

MARY RICHARDSON

ELLEN RUBY

LAURA SMITH

SYBIL WAKE



## We Specials


**W**E use capitals because we think we are unusual; we believe we are "special" Specials. Just listen! We dare say no other class has such a proportion of talent, aside from the charms of youth and beauty: one-half of our number is musical, and one member a composer; three-fifths have histrionic ability, while two members again are experienced actresses.

"L," "M" and "N" are our magic letters, and our favorite language is French, although we do not all speak it fluently. The magic letters represent our ambitions, Love, Money, and Numbers; this last should increase with the recognition of our class organization. Since becoming a regular class, several have joined our number, liking our appearance and approving our aims, and it is not to be regarded as beyond possibility that members of other classes will clamor to change their allegiance for ours.

The  DAISY



## Student Government Association

 HE year 1916-1917 marks the first step of Kentucky College for Women toward a system of self-government. It was tried as an experiment, and so far the experiment has proven a successful one. Our school is made up of girls of both college and college-preparatory ages, and for this reason it is difficult to perfect a system in a short period of time which will be perfectly adapted to girls of such varied ages; but we are attempting to develop in our school a college atmosphere, and the student government system is an essential factor of every college.

The object of the Student Government Association of Kentucky College for Women is to develop and encourage in the girls a sense of personal responsibility and of self-dependence, that they may govern and deport themselves according to their own sense of honor, without having to look upon the faculty as policemen whose very breath is rules and regulations.

The work of the association comprises the keeping of quiet and order in the halls and on the campus, and is carried on by the girls individually, under the supervision of a president and four proctors, who serve as an advisory board and as a helping hand.

The executive body of the Student Government Association is the Honor Board, made up of ten members—the Dean, four members of the faculty, the President of the association, and four proctors chosen from the student body, a new set of proctors being chosen four times a year.

Our system is still in its experimental stage, but with the loyal support of our student body, we feel confident that we shall soon turn our student government system into a finished machine of self-government, with far greater power than at present.



The



DAISY



## The Y. W. C. A.



THE Y. W. C. A. at Kentucky College for Women is one of the oldest student organizations and plays an important part in our student life. This organization contributes to our character growth by giving an opportunity for spiritual development.

The work of the association is varied; there are the weekly meetings, for the most part conducted by the girls; the Sunday School, of which the students have entire charge and which is the only Sunday School in a college in the State of Kentucky; the six Mission Study classes, which are taught by students and serve to widen our interests and deepen our sense of "world spirit"; the social service work in Danville, which includes friendly visiting, telling stories and playing games with groups of poor children once a week.

At the beginning of the school year a reception was given by the association for the girls of K. C. W. and the Y. M. C. A. at Centre College.

Last year the Y. W. C. A. sent six girls and two teachers to the Blue Ridge Conference. The conference proved a great source of inspiration and we hope to send a much larger delegation this year.

The Cabinet for 1916-17 is: Louise Lee, President; Ruth Thomas, Vice-President; Katherine Bailey, Secretary; Elizabeth Buckner, Treasurer; Josephine Mitchell, Superintendent of the Sunday School. The Chairmen of the different committees are: Katherine Peebles, devotional; Lorene Latta, association news; Louise Berry, missionary; Rachel Lee, social; Isabel Darnall, poster; Elizabeth Asbury, social service. This Cabinet and an advisory committee composed of five members of the faculty and one alumnae member transact the business of the association.

There seems to be a growing realization among the students of what the association stands for and appreciation of its work. It is the warmest wish of the Y. W. C. A. that this association may make the year 1916-17 one of the best, most helpful years in our history.



Tudor Literary Society

- MARION A. BOGGS . . . . . *Mistress of Ceremonies*
- LOUISE WILSON . . . . . *Recorder*
- MINNIE BRUMMAL LEWIS . . . . . *Keeper of the Keys*
- NICOLI BRENT . . . . . *Court Musician*
- RACHEL LEE . . . . . *Mistress of the Robes*
- AGNES MORTON SHAW . . . . . *Faculty Member*
- MRS. C. E. RODES . . . . . *Honorary Member*



### Stuart Literary Society

- DOROTHY WATSON . . . . . *Mistress of Ceremonies*
- MARY LEWIS EDELEN . . . . . *Recorder*
- ELIZABETH LITTLE . . . . . *Keeper of the Keys*
- ROE SPRAGUE . . . . . *Court Musician*
- GRETCHEN MUELLER . . . . . *Mistress of the Robes*
- MARGUERITE D. MABLEY . . . . . *Faculty Member*
- MRS. M. M. ALLEN . . . . . *Honorary Member*



### K. C. W. Glee Club

MISSSES ALEXANDER, BERRY, ASBURY, JEFFERS, RICHARDSON, LEWIS, BERRY, BAKER,  
PENN, LONG, LITTLE, MITCHELL, LEE, BIRD, KELLAMS, YOUNG, SPRAGUE, THOMAS  
PORTER, EDELEN, CRUTCHER.

The college glee club is an organization, which, in spite of many discouragements, is growing to be one of the features of our school life. Its aim is primarily educational. Its work includes a course in sight-singing, the study of different choral works, and often the study of one light opera a year. It has been used on various occasions to augment the choir of the Second Presbyterian Church, and also to represent the school at public gatherings, as part of the program.

In past years, with the assistance of the Centre College Glee Club, the Gilbert and Sullivan operas, "Mikado" and "Pinafore," were given with splendid success. Last year, in conjunction with the C. U. Club, Sullivan's opera, "Trial by Jury" was given. The cast was well selected and the work of the members highly commendable. This year the club is planning to sing "The Lady of Shallot," by Bendall, a beautiful cantata for women's voices, and on numerous occasions has proved itself to be a very valuable adjunct to the school. It is under the direction of Miss Porter, Director of the Department of Voice.



### The Dramatic Association

**T**HE Dramatic Association of Kentucky College for Women is in its second successful year. The aim of the association is to develop in the students an appreciation of the drama through the thoughtful production of modern and classical plays. The first entertainment of the year 1916-1917 was "A Night Before Christmas Dream," presented just before the holidays by the Expression class.

On March 16 the Senior class will present a modern comedy in three acts, "The Elopement of Ellen," by Marie J. Warren.

In May, the Shakespearean play, "Much Ado About Nothing," will be given on the picturesque college campus. The cast will be chosen through a competition for parts which is open to all members of the college. Previous to the try-out, a careful study of the text will be made in the English classes in order that the students may become familiar with the characters before attempting to interpret them.

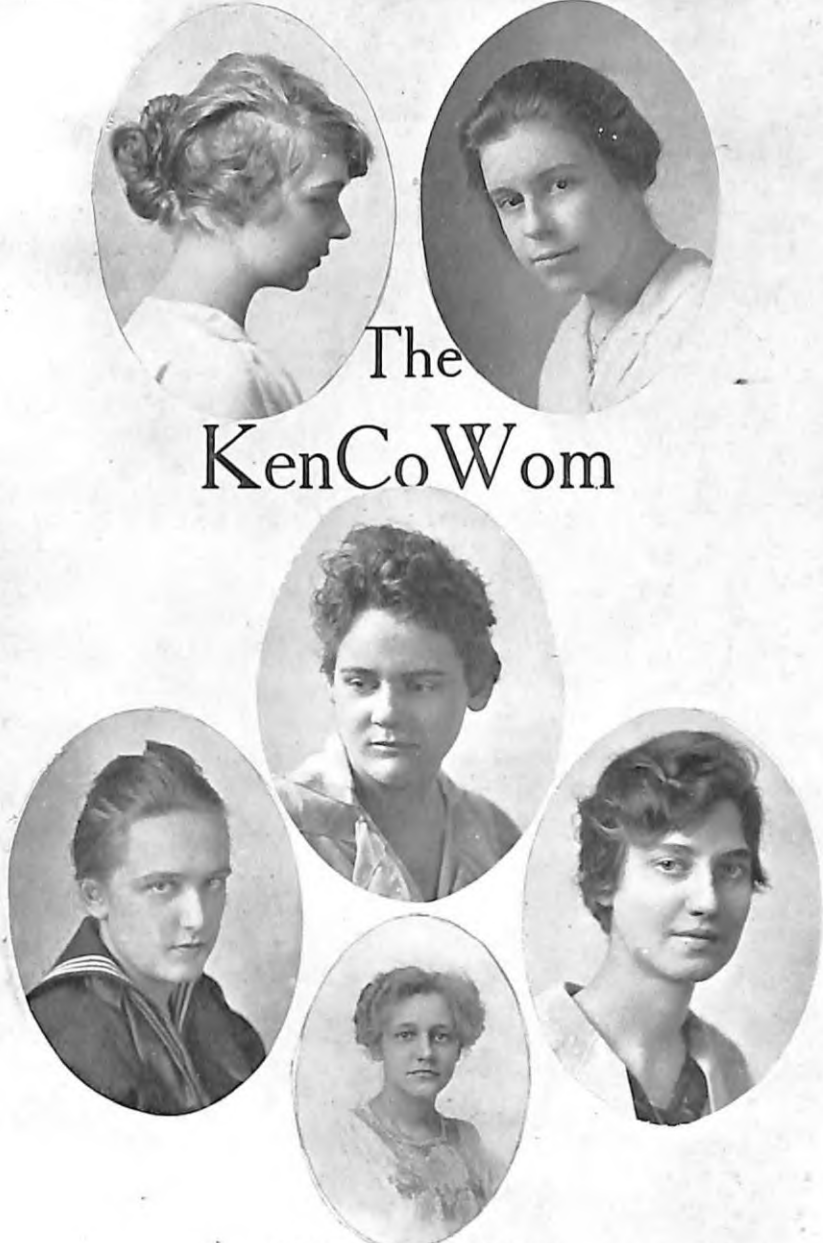
"Much Ado About Nothing" will be performed on the evening of the May day celebration and will close the activities of the Dramatic Association for the year.





SCENES FROM "TWELFTH NIGHT"





The  
KenCo Wom

JANUARY 1917



## The Kencowom

THE KENCOWOM represents the college in more than name. It is the symbol of the literary hope, and ambitions and achievements of our students. It is our sole student publication—of the girls, by the girls, and for the girls. The Kencowom of to-day is merely a beginning of what we hope to make the Kencowom of to-morrow. It has been a success financially as well as in its literary efforts. Our magazine has originality and ingenuity. Its jokes are snappy and its stories are good. All of which is testified by the excellent support of the student body.

All Hail to thee! oh, Kencowom, may you ever be the shining symbol of our Alma Mater's literary activities.



### M F<sup>2</sup> Club

*Flower:* Pink Rose      *Aim:* To do others before they do us.      *Song:* Campus Blues

*Meeting Place:* First one place and then another      *Motto:* If you can't be good, be careful

#### OFFICERS

- |                     |       |                |
|---------------------|-------|----------------|
| BRUMMAL LEWIS       | ..... | President      |
| MARTHA BALL RATLIFF | ..... | Vice-President |
| MAUDE GRIFFITH      | ..... | Secretary      |
| MARJORIE KEVIL      | ..... | Treasurer      |
| JANE McCALLAN       |       |                |
| IDA JOHNSTON        |       |                |
| GRACE LEACH         |       |                |
| NANCY MUIR          |       |                |

# The DAISY



## Fin-Can Alley

Six maids of "Tin-Can Alley" we,  
Happy and cheerful and full of glee.

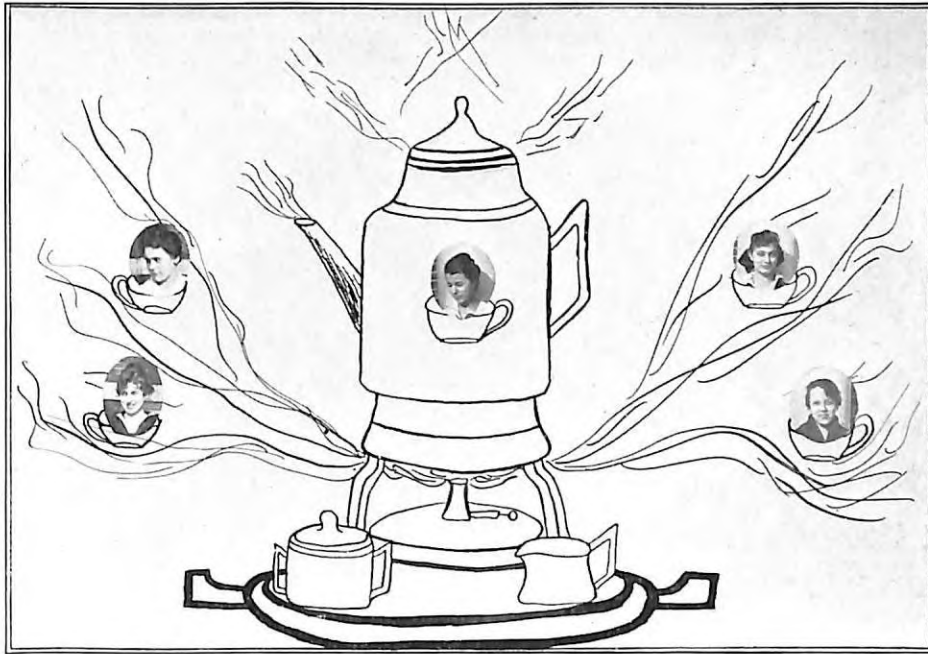
First is Nancy, our basketball star;  
Lean and lanky, always right thar'.

Then comes Rachel, who can sure cook and sew;  
When you want her you'll find her a good friend  
you know.

Last, but not least, thought cute and small,  
Comes "Tiny Tom," at your beck and call.

Next is our Maudie, of "Student" fame;  
Though she has secrets, we love her the same.  
Brummal, the heart-smasher! full of fun—  
Is she BRIGHT, or WOOD? How soon will  
she be DUNN?

Truly witty and bright as her name  
Is our dear old "Sonny" of violin fame.



## Ye Ladies of the Tea Cups

*Color:* Lemon

*Flower:* Tea Rose

*Motto:* "To love each other we do our best,  
So where'er we meet we feast and jest."

### MEMBERS

NICHOLI BRENT  
MARY LEWIS EDELEN  
LILLIAN MOORE  
THERESA MOORE  
LORENE LATTA



## The Campus Club

*Aim:* To room together and still love each other

*Meeting Place:* Anywhere off campus

*Pastime:* Planning how to get to town more than once a week

### MEMBERS

BONNIE WOMACK

GRETCHEN MUELLER

MINA WILSON

MARTHA RIKER

MARGARET GREENLAW

ELIZABETH BUCKNER

MARCIA KEYES

ELIZABETH DOOLEY

ELLEN RUBY





OFFICERS OF ATHLETIC ASSOCIATION



## The Athletic Association of K. C. W.

**T**HE Athletic Association offers to all the girls privileges in many kinds of athletics and outdoor sports. Indoors there is a splendid basketball floor, swimming pool and bowling alley. Out of doors there are three tennis courts. All basketball candidates are used, either on the Red and Black teams, chosen within the school and playing the best two out of three games, or on the Varsity team, chosen from the best of the Red and Black players. Any girl must have permission from home and a doctor's certificate before she is allowed to play intercollegiate ball as a member of the Varsity team.

Tennis tournaments and swimming matches are open to all members of the association.

The athletic banquet is held every spring, for members only. At this the numerals or letters are awarded to the girls who have attained the required degree of excellence, depending upon the skill exhibited, and the amount of participation in the various activities.

This year an exhibition of the Gymnastic Department in the form of May Day, a May queen, her court and attendants is being planned, under the association, and we sincerely hope that this will be continued as an annual custom.

All of these varied opportunities are open to any girl who will pay one dollar for the first year and seventy-five cents the succeeding years for the privilege of becoming a member of the association.

### BASKETBALL SCHEDULE OF KENTUCKY COLLEGE FOR WOMEN

MISS ELIZABETH GREENE, Oberlin, '16 . . . . . *Director of Athletics*  
MISS ELIZABETH BUCKNER . . . . . *Captain*

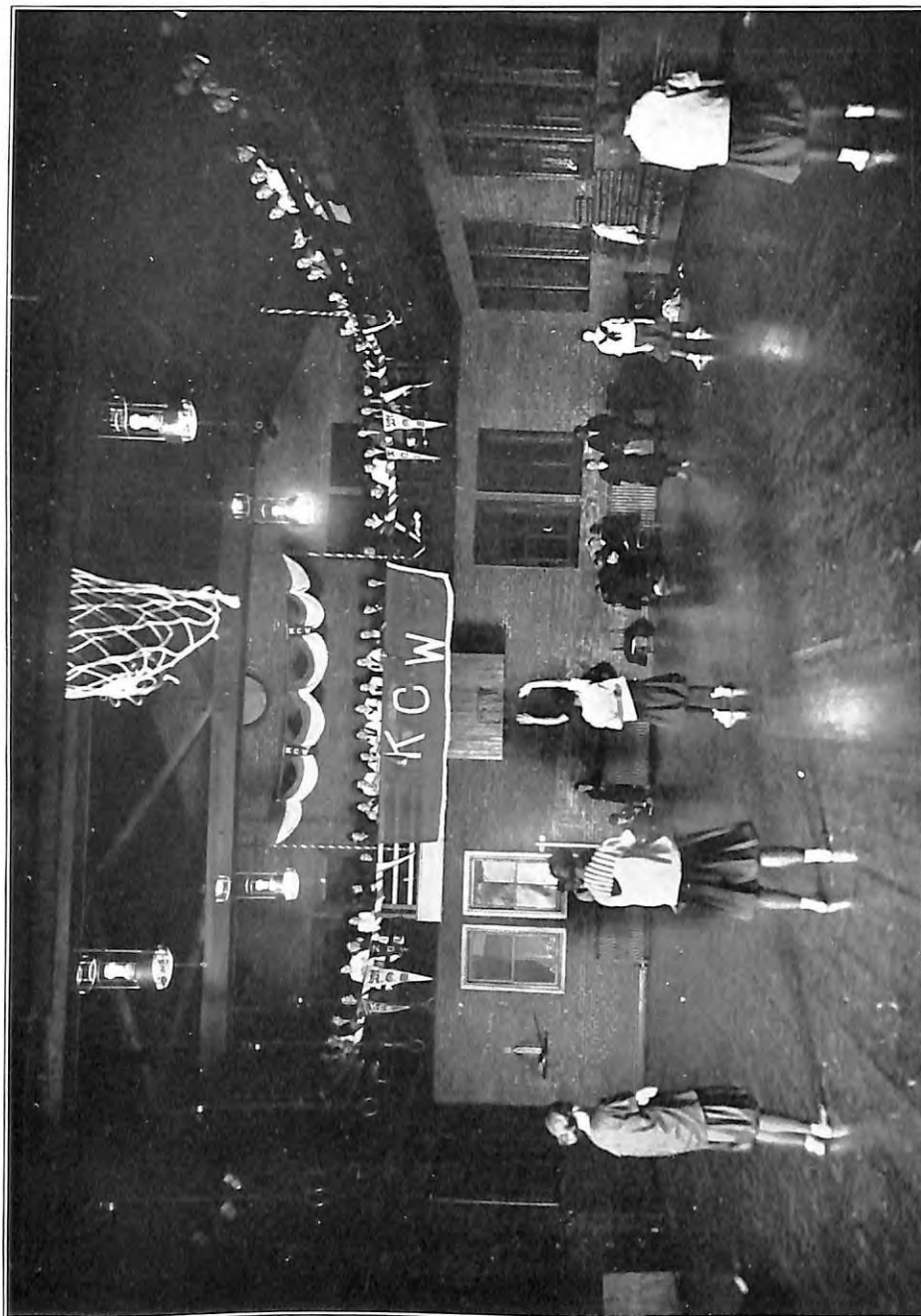
- FEB. 3.—Kentucky Wesleyan, at Danville.
- FEB. 10.—University of Louisville, at Danville.
- FEB. 16.—Kentucky Wesleyan, at Winchester.
- FEB. 17.—University of Kentucky, at Danville.
- FEB. 23.—University of Louisville, at Louisville.
- MARCH 3.—University of Kentucky, at Lexington.



VARSITY BASKETBALL TEAM



The  DAISY



K. C. W. VS. LOUISVILLE



Tennis Club

ELIZABETH ASBURY  
 CLARA ARNOLD  
 KATHERINE BAILEY  
 MARGUERITE BROADWELL  
 FLORENCE BERRY  
 LOUISE BERRY  
 IRIS CRUTCHER  
 ELIZABETH DOOLEY  
 ISABEL DARNALL  
 MARY LEWIS EDELEN  
 ELIZABETH EASON  
 IDA JOHNSTON

EVELYN JEFFERS  
 MARJORIE KEVIL  
 MARCIA KEYES  
 FRANCES KINNE  
 GRACE LEACH  
 LOUISE LEE  
 RACHEL LEE  
 MINNIE BRUMMAL LEWIS  
 ELIZABETH LITTLE  
 MARY ELEANOR LONG  
 LORENE LATTA  
 LILLIAN MOORE

THERESA MOORE  
 JANE MCCALLAN  
 NANCY MUIR  
 ETHEL MCGUFFY  
 KATHERINE PEEBLES  
 MARY VIRGINIA PERRY  
 MARY RICHARDSON  
 ROE SPRAGUE  
 RUTH THOMAS  
 EDNA VOGEL  
 ANNIE LAURIE WOMACK  
 FLORENCE YOUNG



### Swimming Class

CONSTANCE ALEXANDER  
 CLARA ARNOLD  
 ELIZABETH ASBURY  
 KATHERINE BAILEY  
 FLORENCE BERRY  
 LOUISE BERRY  
 MARY CARLYLE BIRD  
 MARGUERITE BROADWELL  
 IRIS CRUTCHER  
 ISABEL DARNALL  
 EVELYN JEFFERS

IDA JOHNSTON  
 MARJORIE KEVIL  
 FRANCES KINNE  
 LORENE LATTA  
 LOUISE LEE  
 RACHEL LEE  
 ELIZABETH LITTLE  
 ELEANOR LONG  
 MARTHA LOWRY  
 JANE MCCALLAN  
 JOSEPHINE MITCHELL  
 LILLIAN MOORE  
 THERESA MOORE

KATHERINE PEBBLES  
 MARY VIRGINIA PERRY  
 LIDA RAINEY  
 MINA RANKIN  
 MARTHA BALL RATLIFF  
 MARY RICHARDSON  
 ROE SPRAGUE  
 RUTH THOMAS  
 EDNA VOGEL  
 BONNIE WOMACK  
 FLORENCE YOUNG



## Calendar

### SEPTEMBER

- 14—Railroad strike over—we all arrive.
- 15—Matriculation! Miss Miller prefers K. C. W. as boarding place.
- 16—Party in Community Room. New girls become acquainted with Community Room floor by contact with their noses.
- 17—First appearance in public. All of us go to "Old Speckleback." Many tears!
- 18—School aware of Ditto's arrival.
- 19—Rushing committee formed by the Berrys and E. Jeffers.
- 20—Centre chapel seats dusted by K. C. W. girls.
- 21—Liz Buckner arrives and is inspected by the new girls.
- 22—Dance in town. We are visited by Alumnae.
- 23—First football game. *Free*. Full attendance by K. C. W.
- 24—First Church honored by our presence. Margaret Greenlaw sings.
- 25—We accept Student Government. M. Green-

- law enters school and accepts two weeks of jail, result of appearing in Danville Friday.
- 26—Jap makes a visit and instructs new girls in her famous borrowing system.
- 27—First Y. W. meeting. Pool open—shivers!! Miss Greene dangles Liz Buckner on the end of a fishing pole.
- 28—Football practice becomes popular.
- 29—Reception at Centre. Chick begins his winter campaign.
- 30—Football game. Admission 50 cents. Nine K. C. W. girls attend. Freshman initiation.

### OCTOBER

- 1—Doris starts a correspondence with Chick. Many mothers call. More tears.
- 2—Totsy appears in barber shop sweater. First meeting of Student Association.
- 3—Y. W. Cabinet go to Tea Room for dinner. Marjorie goes riding with Mrs. Turner.
- 4—Preparations for picnic begin. "What shall I wear?"
- 5—Privileges. City gets a treat.
- 6—Y. W. Reception in the Community Room.

# The DAISY



- More raving on the part of the new girls.
- 7—Plans for picnic continued—"Can we be with the boys every single minute?"
- 8—Beauty Shop opened. Business flourishing for the picnic.
- 9—PICNIC. Boone's Cave gets the rush.
- 10—Scandals of the picnic revealed.
- 11—Margaret celebrates her freedom from jail. Totsy pays her home town a visit.
- 12—Begin our winter diet. Soup.
- 13—Soup again. Reception at First Church.
- 14—Picnic at Blue Knob. Whispering to boys positively forbidden.
- 15—Rain! But we go to church just the same.
- 16—Miss Andrus investigates "this thing of borrowing."
- 17—Louise and Liz begin their quest for ads.
- 18—Rain! Rain! Rain!
- 19—More rain. Grand opera in Lexington.
- 20—Rain again. No reception. We visit the picture show after Miss Shaw's censorship.
- 21—Senior(s) have dates—also Iris Crutcher.
- 22—Pup's attendance at Sunday School discouraged.
- 23—Test day. Much gloom.
- 24—Our President, Maude, gets locked out from breakfast.
- 25—Well, we have the pup again.
- 26—Miss Andrus has a Rule Test.
- 27—Centre gains a victory, 111-0. We witness largest score ever made on Centre's gridiron.
- 28—Murder!! Thieves!! Burglar alarm threatens to break up the school.
- 29—Something to talk about.
- 30—School thrills again, reception at Centre tomorrow night.
- 31—K. C. W. welcomed at Centre by red devils. Frances Glass demonstrates "Walking the Dog" for the entertainment of spectators.

## NOVEMBER

- 1—*At last*, Martha leaves for Madge's wedding after months of talking.
- 2—Doris returns, all hopes of an elopement blasted.



# The DAISY



- 3—Stump speeches in chapel. Half the school leaves for the week-end. We demand a rebate on our meal ticket.
- 4—Lonesome.
- 5—"Make way for the cattle."
- 6—Doctor Turner tells in chapel why Hughes is the one and only perfect hero.
- 7—Judge Bagley tells the same about Wilson. Mad excitement and heated arguments over the election.
- 8—Athletic rally. Distinguished visitors for dinner: Columbia, Waiting Wilson, Hopeful Hughes, Teddy, Villa and Kaiser Wilhelm.
- 9—Third floor think they have a vacation when Mary leaves, but second floor lends us Rachel.
- 10—Senior dinner postponed for the 11th time.
- 11—Senior(s) again have date(s) ???
- 12—Miss Shaw ill. Mrs. Buchanan requests that her table eat in the kitchen.
- 13—First basketball practice. Several teams published by onlookers, but no official report.
- 14—Groans, groans, everyone stiff. Fresh oysters at lunch!!!!
- 15—Iris establishes her new postal system.
- 16—Half of school out for basketball practice again.
- 17—Mad rush for football game futile, also attempt to get in for half price.
- 18—Juniors give "kid party" instead of the hoped-for dates. Bonnie tries to settle old scores and assassinate Miss Blake, but her efforts prove in vain.
- 19—Regular dinner with peach ice cream.
- 20—Fatal Honor Board meeting.
- 21—Familiar characters of K. C. W. advertised on the bulletin board in red letters, resulting in "bread line" before the Dean's office.
- 22—No privileges for a while.
- 23—Mary Heath returns to find her job as proctor turned over to Eleanor Long.
- 24—General moving day.
- 25—Discourse on Sixth Commandment.

# The DAISY



- 26—Sadie Thompson visits her Alma Mater.
- 27—Long study hour in the afternoon. First of the Artist Series, Helen Stanley.
- 28—First thrills of excitement over Thanksgiving holiday.
- 29—First basketball game of the season between Centre and Georgetown. All men present were of the K. C. W. best type.
- 30—Thanksgiving Day at last. First appearance of the royal bird and a dinner fit for a king.

## DECEMBER

- 1—Seniors on dress parade, their pictures taken for the Annual. Relics from the royal dinner.
- 2—Positively the last appearance of Thursday's bird. Everybody has the privilege of having a date.
- 3—K. C. W. gossips buzzing. Found! Iris' mysterious sorrow which makes the widow's garb appropriate.
- 4—Riker appointed Chief Guardian of the Armor as consolation.
- 5—Only 10 more days!
- 6—Teachers on the warpath, flinging tests right and left.
- 7—Bonnie gets only one special.
- 8—Returns from the tests begin to come in. Deficiency list grows larger.
- 9—Practice Xmas carols.
- 10—More Xmas carols at the church.
- 11—Christine Miller concert. We all aspire to the Egyptian costumes.
- 12—Xmas carols—for a change.
- 13—Y. W. children's party. Xmas dinner. More Xmas carols.
- 14—Xmas carols in all languages given in chapel. No study hour.
- 15—Last of the carols. All say goodbye and are homeward bound.

# JOKES



L. Wilson.  
1916.



## Jokes

Miss Andrus: "Doris, tell all you know about afternoon study hour."

Doris (doubtfully): "Well—we *have* it."

\* \* \*

Fire alarm rings (Margaret running around the room wildly): "Oh, where *are* the crackers?"

\* \* \*

Marcia: "Grace, are you a Tudor or a Stuart; you're the same as I am, are you not?"

Grace: "Why, no, I'm older than you are."

\* \* \*

Miss Mabley: "Ida, why did Themostacles move the harbor of Greece?"

Ida: "Because it was too near the shore."

\* \* \*

Mary: "Pardon me, Miss Dessery, for walking on your feet."

Miss Dessery: "Oh, don't mention it; I walk on them myself, you know."

\* \* \*

Evelyn: "Nancy, who are you going to be in the tableau?"

Nancy—"Charles II."

Evelyn (much relieved): "Oh, good, I was so afraid you were going to be Richard III."

\* \* \*

Miss Lewis: "In what course does Jane expect to graduate?"

Miss Andrus: "In the course of time from the looks of her report."

\* \* \*

Bcnnie: "Mart, how old are these lights anyhow?"

Martha: "About three years, I think."

Bonnie: "Well, turn them down, they're too young to smoke like this."

\* \* \*

Jane: "Margaret, how do you get a frat pin; do you just ask for it?"

\* \* \*

Miss Shaw: "To-morrow we will discuss the Shakespearean sonnets; please look them over before coming to class."

Martha: "Where will we find them, Miss Shaw?"

Miss Shaw (with a withering look): "Among his works."

\* \* \*

## IN HISTORY

Miss Mabley: "Esther, what does A. D. mean?"

Esther (with great assurance): "After death."

# The DAISY





## Jokes

Miss Shaw: "Marion, name one of Wordsworth's works."

Marion: "Imitations of Immorality."

\* \* \*

Ruth T.: "There is something eating on my mind."

Maude: "Never mind, it will soon starve to death."

\* \* \*

### IN ENGLISH

Teacher: "Give me three cases."

Freshie: "Nominative, accusative, and Maude Griffith."

\* \* \*

Miss Andrus: "Well, Jane, did you pass your examinations?"

Jane: "With E's, Miss Andrus, with E's."

\* \* \*

### WHAT WOULD WE BE IF WE TOOK THE FACULTY'S ADVICE?

Miss Lewis prays for us to be transparent.

Miss Shaw ask us to be elastic.

Miss Porter reminds us to pitch our voices ahead of us.

Miss Fiske has us fall from stools to illustrate the law of gravity.

\* \* \*

### THINGS WE WOULD LIKE TO SEE AT K. C. W.

Marjorie Kevil with some eyebrows.

Liz Buckner minding rules and being a regular proctor.

Mary Rodes when she was not talking.

Marcia deciding the great question.

Miss Fiske not in the Lab.

Jane McCallam when she wasn't raving.

The practice rooms empty.

Rachel Lee when not using her authority.

Frances Glass and Evelyn Jeffers without T.D.M.L.

Miss Shailer when she was not telling you all about the latest artist.

Mina Wilson keeping quiet.

Margaret Greenlaw without her pin.

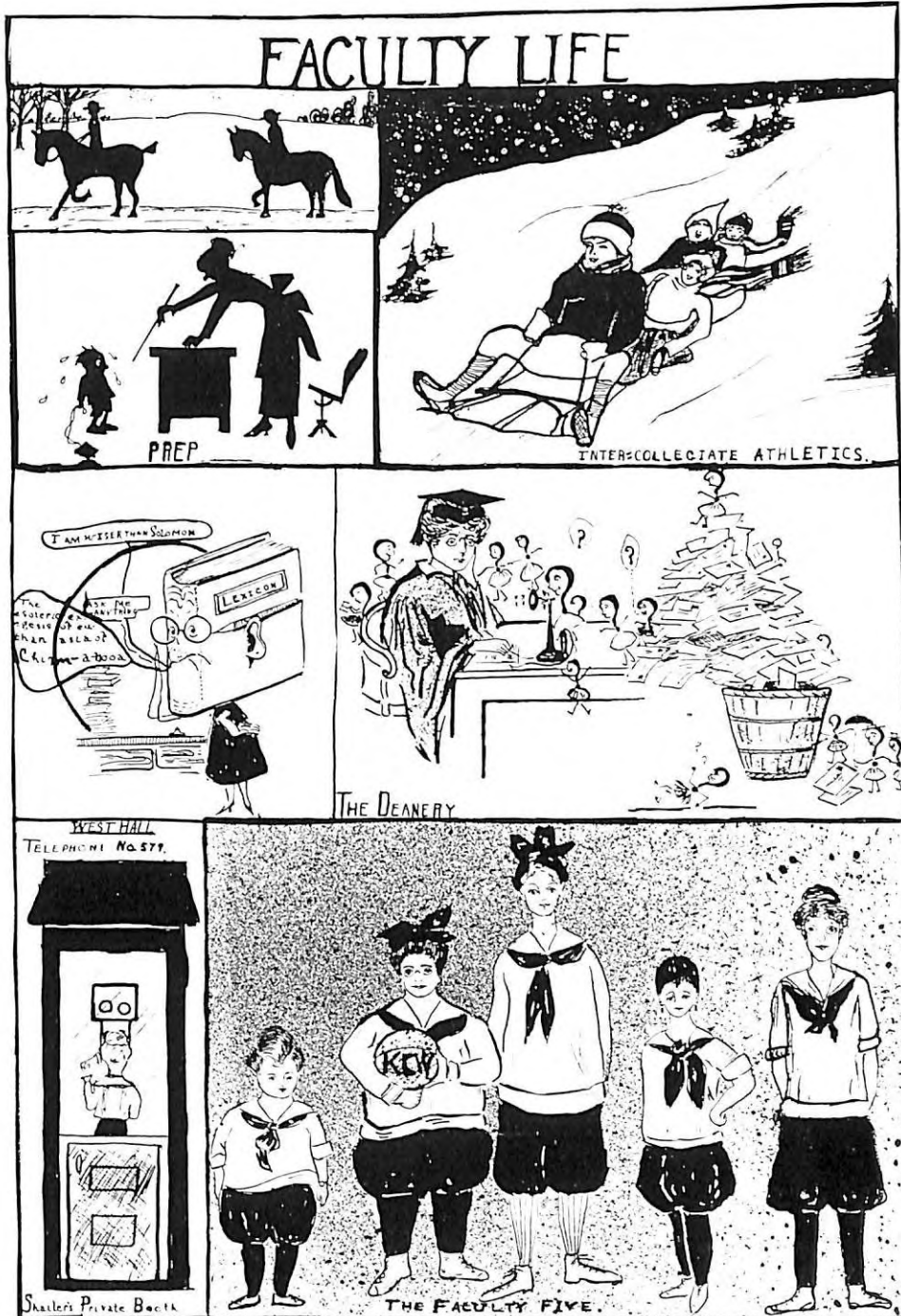
Marion Boggs not bluffing.

Mary Lewis Edelen not hunting the Ouija Board.

Isabel Darnall with an Annual Guide.

No work to be done in the Library.

Two days in succession without beans.



## Gladys T. Shailer at the Piano

No, no, I have read that so many times it came out involuntarily. I mean Gladys T. Shailer was the one who *played*, of course—but it was the day she played maid to Leginska, and the tune was far from classical, "At the End of a Perfect Day" (for Leginska, not for Shailer).

I came in at the beginning of the last act. Time, English tea hour. Place, West Hall, and later gymnasium. A wail of despair rang through the third floor corridor of West Hall:

"I've been running all day long for her—oh, can't you help me? Can you make tea? She wants it now, and she wants it strong."

"Any tea to make it with?"—an icy tone that needed to be persuaded.

"No—yes, yes—and she must have cream—and I must be down at church in twenty minutes, and the tea must be served before then."

Interruption—a voice in the hall saying, "Everything locked and no cream to be had."

Another wail from G. T. S. at-the-Piano. "She'll have lemon then; I guess she *can* drink it with lemon—anybody *can*"—from the same icy tone.

Silence in the corridor, save for the pattering of two pair of feet, madly rushing up and down.

"Lemon—where?"

"In 80."

"Sugar?"

"No sugar"—another wail from G. T. S. at-the-piano.

"Hunt; there must be some somewhere."

"Yes—in 82. Grab it."

"No alcohol."

"Well, Miss Van Pelt's, then; needn't tell her."

"Tray?"

"Sick tray's too large—oh, it *must* be served on a tray. What shall I do?"—beginning of another wail from G. T. S.

"Hunt again. 85—yes. Take it."

"No doily! Who's got a doily? I couldn't serve it on that tray without a doily!"

"Hush! I have one. 88—yes."

"Four crackers with marmalade enough?"

"Shouldn't eat any more, anyway, at this hour. Go on."

*Exit G. T. S. down two flights of stairs over to the gymnasium, meekly bearing a tray.*

NOTE:—Preceding acts were melodramatic. Actors both black and white were tense and pale, subdued by Leginska and a two-foot rule on the still hunt for a chair 1-16 of an inch shorter than any known to be made.

And so the day wore on and the sun sank to rest in the murky atmosphere of cigarette smoke, while G. T. S. still played on—"At the End of a Perfect Day."



The  DAISY



## Jokes

LOVELY LILLY, ADVISER TO THE LOVELORN

DEAR MISS LILLY:—I have lost two crushes in the last week. When writing to them the other day I got their notes mixed. Could that have been the cause?

RUEFUL RUTH.

ANS. DEAR RUEFUL RUTH:—Very probably. You must learn to be cheerful over "love's labor lost."

(Signed) LOVELY LILLY.

\* \* \*

DEAR MISS LILLY:—Please help me. I'm so worried. Since I have asked a young man to dinner once and heard nothing from him, is it right to ask him again?

(Signed) ANXIOUS EVELYN.

ANS. DEAR EVELYN:—Certainly, my dear, the sooner the better. Always remember "the way to a man's heart is through his stomach."

LOVELY LILLY."

\* \* \*

DEAR MISS LILLY:—How can I say Henry's name over 365 times an hour?

(Signed) YOUTHFUL JANE.

ANS. DEAR YOUTHFUL JANE:—Try putting vaseline on your tongue instead of on your eyelashes and it will work quicker.

LOVELY LILLY.

\* \* \*

DEAR MISS LILLY:—I haven't had but three specials from Ann Arbor this week and have sent four. Would it be proper to send a fifth?

(Signed) BOUNCING BONNIE

ANS. DEAR BOUNCING BONNIE:—Forget it, and try home talent; the distance is too great.

(Signed) LOVELY LILLY.



The DAISY

K. C. W. Special

Breathes there a girl with heart so dead  
Who never to herself hath said  
This is my own, my onliest crush;  
Whose heart hath ne'er within her burned  
As home her footsteps she hath turned,  
Eager and loving, her tho'ts all a-rush?  
If there be such, go mark her well,  
For her no minstrel raptures swell.

Many tho' her offices: proud her name,  
Numberless her friends as wish can claim—  
Despite those titles, power, *self*,  
That girl, the wretch must sleep by herself.  
Ev'ry morning 'lone she goes down,  
Every evening returns with a frown,  
Unhugged, unkissed and all alone,  
Dreading th' return to her "crushless" home.

Pardon me, Sir Walter.

The  DAISY



MARTHA RIKER



RACHEL LEE



ELIZABETH BUCKNER



RUTH AND LOUISE WILSON



ELIZABETH EASON



MARY McDOWELL



RUTH THOMAS

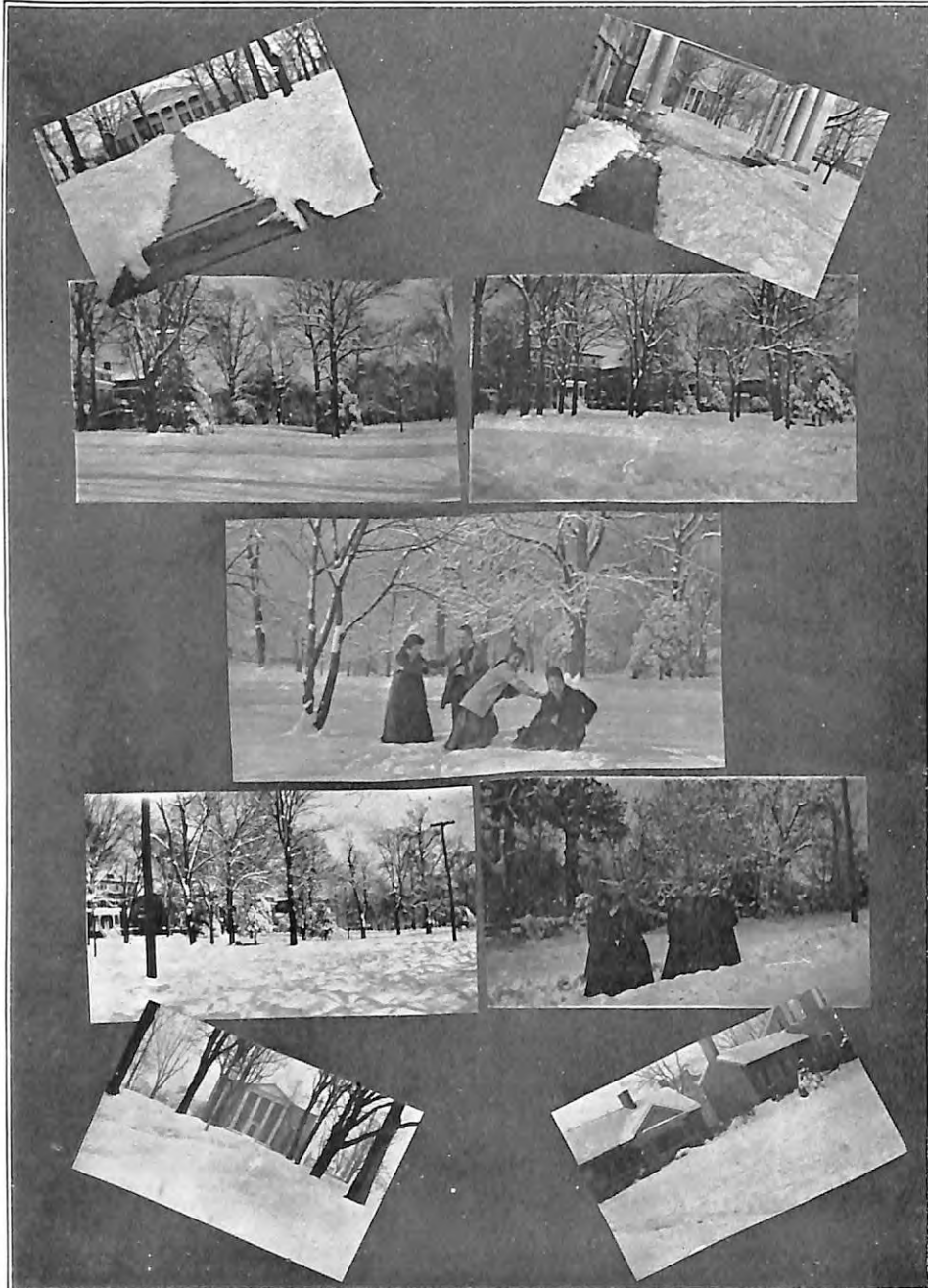


MINNIE PARKER DURHAM

The  DAISY



# The DAISY



*The*



**DAISY**

## The Daisy Staff

Extends heartiest thanks  
to Miss Beulah Terhune,  
Miss Lucille Turner and  
members of the Art Class,  
who by their faithful work  
have produced the art  
material for this volume.







THE FINEST GROCERY STORE IN  
CENTRAL KENTUCKY

## Staple and Fancy Groceries

WE MAKE A STUDY OF BRANDS AND QUALITY

*Fruits of All Kinds, from Every Climate  
Vegetables—Fresh Vegetables At All Times*

---

### MEAT DEPARTMENT

Fresh Meats, Home Killed. Our reputation is State-wide. We kill only the best money can buy. Smoked and Cured Meats. Only the best brands. All Meats Refrigerated and in a Screened Shop.

---

### BREAD AND CAKE DEPARTMENT

Cakes of all kinds. Baked in Danville, in a daylight, sanitary shop.  
All goods under glass

Call and see our store and be convinced

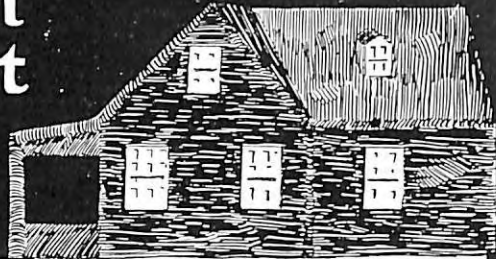
---

C. P. CECIL, JR.

PHONES 59, 81 AND 94

CORNER THIRD AND MAIN

**Daylight  
At Night  
Every  
Night**



That's what a hundred thousand homes are getting from Blau-gas—many of them here in Kentucky.

**Blau-gas**

gives a soft, bright light—the very nearest thing to daylight. No eye-strain, work or worry. Iron and cook with it also. Easy, economical and absolutely safe to operate. Just the right light for school house, church or building. Free booklet tells all about its advantages—write for it today.

**SOUTHERN BLAU-GAS CO., Inc.**

West Main Street

LOUISVILLE, KY.

Attractive Proposition for County Agents

**K O D A K**

*Kodak Finishing Our  
Specialty*

Roll films developed free. Prints 2, 3, 4 and 5 cents each. Dull velox or gloss finish. Write for our General Price List and Booklet.

LET US FURNISH YOU WITH  
EASTMAN FILMS

LET US DO YOUR FINISHING  
Let us frame your Enlargements,  
Diplomas, Certificates, Etc. And  
buy your Kodaks and Stickers  
from us.

"We Can Please You"

**"LOLLAR'S"**

*Kodak Finishing Parlor*

BIRMINGHAM, ALA.

THE PREMIER LINE OF

**College  
Stationery**

*Visiting Cards,  
Commencement Invitations,  
Monogram and  
Fraternity Stationery*

IS MADE BY

**HARCOURT & CO.**

*Stationers and Engravers*  
LOUISVILLE, KENTUCKY

Write for samples, or mention name  
to your dealer when you want the  
best in this line.

The Movies end, but afterward try

## THE SHOP PERFECT

WE GIVE YOU PERFECT EATS

*We make our own  
Ice Cream and Candies  
of all descriptions*

LEAVE US YOUR ORDER

*Tobacco and Cigarettes  
of all descriptions*

THE SHOP PERFECT IS THE PERFECT SHOP

Telephone 100

### Willis-Cincinnati

*The Concert Goer  
The Amateur  
The Teacher  
The College  
The Student  
The Patron  
The School  
The Artist*

And the mere lover of Music  
Need seek no further for what they  
want in music, whether they desire  
but a forgotten classic or a thousand  
novelties. We can supply

ANYTHING IN MUSIC  
Catalogue sent upon request

The Willis Music Co.  
CINCINNATI, OHIO

### W. S. Farmer & Son

FRANKFORT, KY.

*The Girls' Store*

Where girls find that smartness of  
style and touch of youthfulness that  
distinguish their clothes from those  
of their mothers.

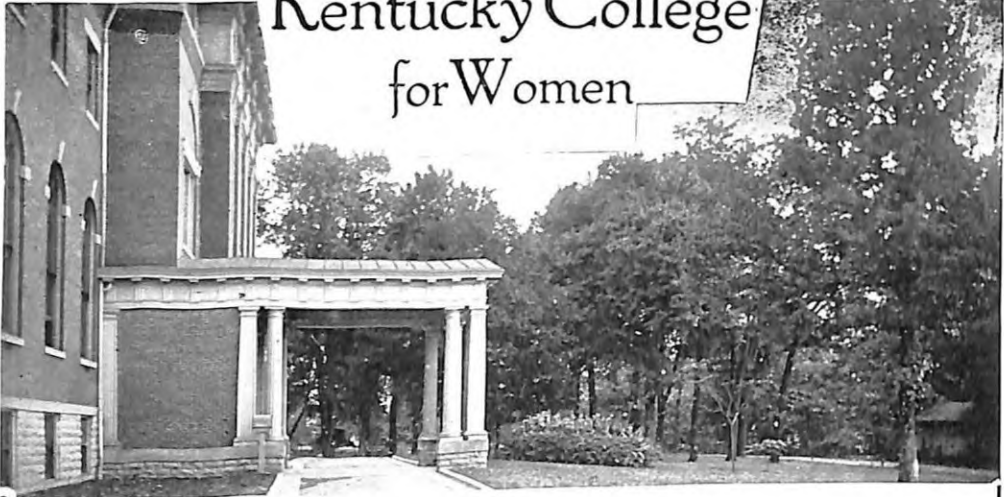
### Hirsch's Goodies

*"The Finest in the World"*

CATSUP, CHILI SAUCE,  
MUSTARD

Hirsch Bros. & Co., Inc.  
LOUISVILLE, KY.

# Kentucky College for Women



In the "blue grass" region, at an elevation of 1,000 feet. Exceptionally healthy and beautiful location. Twenty-acre campus shaded by 300 forest trees. Junior College, College Preparatory, Domestic Science, Music, and Expression. Certificate admits to Mt. Holyoke, Vassar and similar institutions. Strong faculty recruited from the best educational institutions of America and Europe. Small classes, insuring individual attention. Modern, well-equipped dormitories. New gymnasium, bowling alley, shower baths, swimming pool. Gymnastic work in charge of trained teacher. Outdoor athletics, including tennis, field hockey, soccer. The college is incorporated under the laws of Kentucky and is not operated for profit—hence the very reasonable terms, \$400. Enrollment limited.



Address for catalogue

M. M. ALLEN, D.D., *President*

DANVILLE, KENTUCKY



# CENTRE COLLEGE

FOUNDED 1819

DANVILLE, KENTUCKY

College of Literature, Science and Art

Choice of several courses leading to A.B. and B.S. degrees. Large faculty of able and experienced men, each an expert in his own department. Splendid Hall of Science with complete equipment. Large new Library, thirty thousand volumes. New Gymnasium and College Union, finely equipped and handsomely furnished. Large Athletic Field, and excellent opportunity for athletics. Modern Dormitory, comfortable accommodations at modern expense. Danville, a model college town, healthful, beautiful, centrally located. No saloons. The best religious and moral influence. Next session opens September, 1917.

FOR CATALOGUE AND INFORMATION, ADDRESS  
PRESIDENT W. A. GANFIELD

CITIZENS  
NATIONAL BANK  
DANVILLE, KY.

Capital \$100,000  
Surplus, \$ 93,000

OUR MOTTO IS  
*Safety and Service*

Give us a chance to prove it by  
opening an account with us.

M. J. FARRIS, President  
J. A. CHEEK, Vice-President  
J. A. QUISENBERRY, Cash'r  
H. L. BRIGGS, Ass't C'sh'r

UNITED STATES DEPOSITORY

FARMERS  
NATIONAL BANK

Capital, \$100,000

Surplus and Undivided Profits,  
\$120,000

DANVILLE, KENTUCKY

J. C. CALDWELL, President  
CHAS. P. CECIL, Vice-Pres.  
G. A. MCROBERTS, Vice-Pres.  
G. W. WELSH, Cashier  
LORRIS SOPER, Ass't Cashier

THE DANVILLE  
MESSENGER

*The Model Country Newspaper  
Issued Tuesdays and Fridays*

All the home news; best market reports. Devoted to the upbuilding of Central Kentucky. Best equipped Job Printing Office in the State. Catalogue work a specialty. Low prices and perfect satisfaction guaranteed.

\$1.50 PER YEAR

LOUIS LANDRAM, Editor  
H. MCGOODWIN, Manager  
GEO. H. HOCKER, Solicitor and  
Reporter

Electric Light  
Electric Power



DANVILLE LIGHT,  
POWER &  
TRACTION CO.



Established in 1852

WELSH & WISEMAN COMPANY

Danville, Kentucky

# DILLEHAY BRICK COMPANY

INCORPORATED

HEADQUARTERS FOR  
BUILDING SUPPLIES  
AND COAL

TELEPHONE 106

PROMPT SERVICE

## HEART OF THE SHOPPING DISTRICT

Diamonds  
Watches  
Jewelry  
Clocks  
Silverware  
Cut-Glass  
Sheffield  
Signa-ware  
Stationery  
Novelties



The  
Store  
on the  
Corner

OSKAMP'S Canal 550. 80 Years Old  
Race. Cincinnati Seventh

When seeking a bit of whole-  
some recreation drop  
into the

## COLONIAL THEATRE

On Main Street, Danville's  
select Motion Picture  
Theatre, where only the  
choicest of the world's most  
famous producers  
are shown.

---

Always a Select Entertain-  
ment for white per-  
sons only.

## K. C. W. GIRLS NOTICE

SEE THAT YOUR CANDIES  
COME FROM  
THE PALACE OF SWEETS

*We are headquarters for the  
Finest Candies  
in the City*

We build our "Rep" on Quality,  
not Cheapness

PHONE 724

The Palace of Sweets

*"It can be done better  
with gas"*

---

Cook With Gas  
Light With Gas  
Heat With Gas

---

COMMONWEALTH  
POWER RAILWAY  
LIGHT COMPANY  
Incorporated

39 — TELEPHONE — 39



READ THE  
**ADVOCATE**  
TO GET THE  
Happenings of  
the Day

There's a Wooltex Garment for  
Every Figure,  
for Every Age,  
for Every Purse  
*McCallum Silk Hose, Munsing  
Union Suits, Gossard Corsets,  
Wirthmore Waists*  
**A. B. Robertson & Bro.**  
"The Store That Sells Wooltex"

**THE HUB**  
**PUSHIN BROS.**  
**DEPARTMENT**  
**STORE**  
DANVILLE, KENTUCKY

**Kodaks and Films**  
Fresh Supply of STATIONERY  
We carry all the new special tints and  
latest shapes in CRANE'S LINEN LAWN.  
CORRESPONDENCE CARDS, Initial and Gold-  
bordered, Royal Blue and White Inks.  
Fountain Pens and Fountain Pen Ink.  
**JOHN S. WELLS**  
Rexall Store Danville, Ky.

ARTISTS' MATERIAL AND  
WHITE CHINA FOR DECORATING  
Free Catalogue sent upon  
application  
**A. B. Closson, Jr., Co.**  
112-114 West Fourth Street  
CINCINATI, OHIO

Telephone 2456 Courtlandt  
**Stephen Lane Folger**  
180 Broadway, New York  
*Club and College Pins  
and Rings,  
Gold and Silver Medals*

**W. T. Sistrunk & Co.**  
LEXINGTON, KY.  
*Wholesale Fruits and  
Vegetables*  
We specialize on Seed Potatoes and  
Onion Sets. When in the market,  
let us hear from you.

**HOTEL HENRY  
WATTERSON**  
Modern, Strictly Fire-Proof, and  
located in the heart of the shopping  
and theatre district.  
LOUISVILLE, KENTUCKY

# The Baldwin Piano

GRAND PRIX, PARIS, 1900      GRAND PRIX, ST. LOUIS, 1904  
GRAND PRIX, LONDON, 1914

"Tone-sustaining power and a tone that sings" are the particular characters of the BALDWIN PIANO which endeared the same to the hearts of the Greatest Living Musicians of the world. Science and Artistic Skill are lavished upon every detail of the

BALDWIN PIANO

CATALOGUE AND OTHER INFORMATION ON REQUEST

## THE BALDWIN PIANO CO.

Incorporated Manufacturers

521 S. FOURTH STREET

LOUISVILLE, KY.

WE SELL AND DELIVER

### QUALITY AND SERVICE



City Phone 7-76

Plant Phone 24-69

### DANVILLE ICE & COAL COMPANY

*Drugs, Toilet Articles,  
Cigars, Cigarettes,  
Candy, Stationery*

The place to get what you want,  
when you want it.

*Everything Here is Fresh*

Danville Pharmacy

H. A. OELRICH

135 N. Third St. Danville, Ky.

For Fords, Studebakers

And all kinds of repairing done on  
quick notice, see

### DANVILLE MOTOR COMPANY

# The DAISY



## JANUARY

- 3—School begins tomorrow. \*Callers until 11:15. Miss Andrus arrives at 11:30.
- 4—Those having a stray three dollars appear.
- 5—Christmas jewelry inspected; all frats represented.
- 6—Discussion in Marcia's room, "Which skin will have the place of honor?"
- 7—Chocolate shower in third floor back; fire accompanies the flood.
- 8—Everybody celebrates moving day again. Mina added to the forces of third floor, back.
- 9—Measles in town! Calling, shopping and Shop Perfect forbidden. Jail again.
- 10—New frat pins in school; complications arise.
- 11—Dr. Allen speaks in chapel of Jennie falling down in Bible; Miss Lewis much worried.
- 12—Basketball game at Centre. Miss Miller shows the spectators she's a regular chaperone.
- 13—Snow, snow, snow. Snowstorm, snow fight; Mary Richardson gets a black eye.
- 14—Snowbound. Church in chapel; distinguished visitors present.
- 15—Dr. Allen visits us on snowshoes. Hearse toot-toot wagon in cold storage.
- 16—Evelyn follows in Dr. Allen's footsteps, her "perpendicularity reduced to horizontality."
- 17—Maude, under pressure of Miss Andrus and Gretchen at the same time, cuts her throat.
- 18—Spelling match in chapel. Winners: Miss Shaw, Dr. Allen and Maude Griffith.
- 19—Coasting party as a rival attraction to the Ernst Debate.
- 20—"Nib" Dooley forgets to bring her Dorine to the table. Dr. Thomas' annual Sunday School class party.
- 21—Last of the great snow. On the way back from church we discover how Noah felt.
- 22—Most of the inmates of second and third floors experience the joys of being campused.
- 23—Moans and groans. "Two whole weeks, and we didn't do a thing but have a soap fight."
- 24—We fear we are becoming contaminated with rat poison. Miss Van P. needs an assistant.
- 25—Reviews almost over; preparing for the great week of exams.
- 26—First Red and Black game. Misses Yeager and McCollum visit their Alma Mater.
- 27—Varsity team picked. Congrats are the order of the day.
- 28—Girls walk without coats and are threatened with a campus course by the Dean.
- 29—The fatal reckoning day is here—exams begin.

# The DAISY

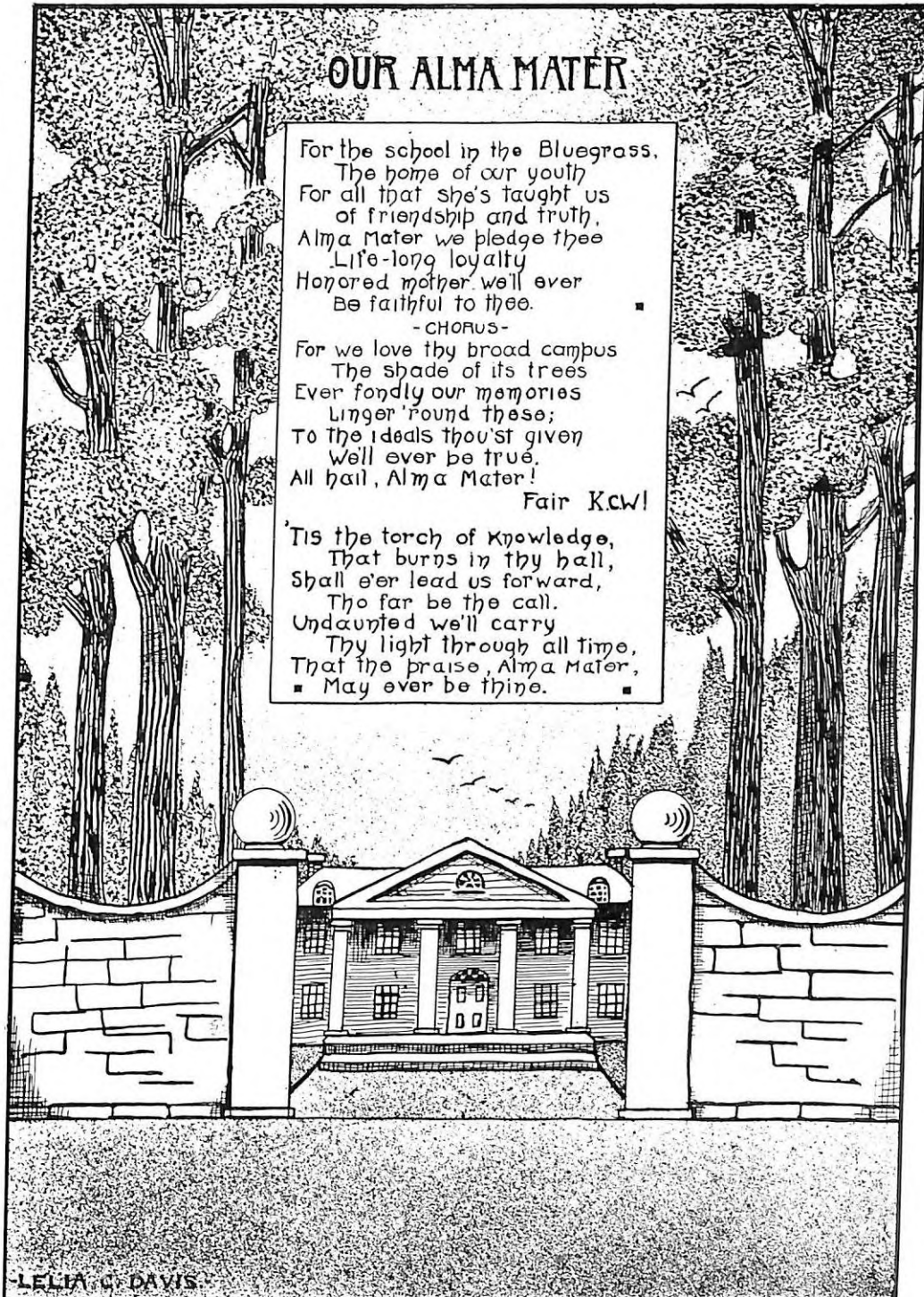


- 30—The most terrible day of all—French and Bible together!  
31—No time to rest!

## FEBRUARY

- 1—The ordeal begins to lessen—almost over.
- 2—One big sigh of relief.
- 3—Wesleyan comes with bells on. Nerve-racking, camera-racking strain of the morning when group pictures were taken.
- 4—New girls in our midst; they are honor guests at many feasts.
- 5—Back to the regular routine of work.
- 6—Mrs. McCallan decides to stay over for the Louisville game.
- 7—Faculty tea; no eats left over.
- 8—Gretchen's weekly change of crushes takes place.
- 9—Large party expecting to see Bernhardt in Lexington; dwindles to two. We get on our armor for the Louisville bunch.
- 10—All eyes centered on the visitors. What will we do to them?
- 11—They did us. Our city friends spend the week-end in the country.
- 12—First Senior play practice—agony begun.
- 13—A few Seniors try to cultivate masculine voices.
- 14—Valentine decorations greatly enhance our spacious dining room. Some fortunate ones got valentines.
- 15—Miss Dickey still parades her roses.
- 16—Team goes to Winchester. First basketball trip; the team learns how to act away from home.
- 17—The State Amazons run up against the K. C. W. midgets.
- 18—We just escape another deluge of week-end visitors.
- 19—Berea Student Volunteer Delegates return, tired, but happy. Work of Cupid's darts evident.
- 20—Effects of Monday's Honor Board meeting; campus list swelled.
- 21—Y. W., Senior play practice, Junior practice, B. B. practice. Same old routine.
- 22—Handy in town. Iris keeps the faculty on the alert.
- 23—K. C. W.-Louisville game.
- 24—Junior pantomime. Eleanor makes a hard hit.
- 25—Miss Phillips of Lebanon at K. C. W.
- 26—Team holds auction of all they bought in Louisville.
- 27—First Choral Club concert. Everybody forced to take a *cold shower*.
- 28—"Little John Goldfish" departed this life. Funeral notice hereafter.

Annual goes to print.



## Artist Series 1916-17

Recital by Miss Helen Stanley, Soprano

Miss Gladys Shailer at the Piano

Monday Evening, November 27, 1916, 8:15 o'clock

### PROGRAMME

Aria, "Louise" .....	<i>Charpentier</i>	O Wusst ich doch den weg zuruuck.....	<i>Brahms</i>
Gia il sole dal Ganges.....	<i>S. Scarlatti</i>	Rheinlegendchen .....	<i>Mahler</i>
Cantu a Tumuni.....	<i>Sicilian Song</i>	Hat dich die Liebe beruht.....	<i>Marx</i>
Si j'etais petit oiseau.....	<i>Marais</i>	Should He Upbraid.....	<i>Bishop</i>
Chanson d'Avril .....	<i>Bizet</i>	Orpheus With His Lute.....	<i>Sullivan</i>
La Cigale .....	<i>Chausson</i>	The Sleep That Flits on Baby's Eyes..	<i>Carpenter</i>
Andenken .....	<i>Beethoven</i>	The Crying of Water.....	<i>Campbell-Tipton</i>
Er ist Gekommen.....	<i>Franz</i>	Birthday .....	<i>Whiting</i>
		Aria, "Madame Butterfly".....	<i>Puccini</i>

MASON AND HAMLIN PIANO USED

## Recital by Miss Christine Miller

Miss Gladys Shailer at the Piano

Monday Evening, December 11, 1916, at 8:15 o'clock

### PROGRAMME

Come Again	} Old English Melodies	Die Abloesung .....	<i>Hollaender</i>
Where the Bee Sucks		Waldeggesprach .....	<i>Schumann</i>
The Little Red Lark	} Old Irish Melodies	Fruehlingsnacht .....	<i>Schumann</i>
The Passing of the Gull		The Grey Wolf.....	<i>H. T. Burleigh</i>
Bendemeer's Stream		The Last Hour.....	<i>A. Walter Kramer</i>
"Adieu, Forests," from "Jeanne d'Arc".....		Don't Ceare (Dorsetshire Dialect).....	
.....	<i>Tschaikowski</i>	.....	<i>Jno. A. Carpenter</i>
Feldeinsamkeit .....	<i>Brahms</i>	Absent .....	<i>Tirindelli</i>
Der Schmied .....	<i>Brahms</i>	One Golden Day.....	<i>Fay Foster</i>
		Wind and Lyre (written for and dedicated to Miss Miller.....)	<i>Jas. H. Rogers</i>

BALDWIN PIANO USED



## Piano Recital by Ethel Leginska

Thursday Evening, January 11, 1917, 8:15 o'clock

### PROGRAMME

#### I.

- |  |   |
|--|---|
| <p>a. Gavotte and Variations.....<i>Rameau</i><br/>         b. Le Concon .....<i>Daquin</i><br/>         c. Rondo a Capriccio.....<i>Beethoven</i></p> | <p>d. Sonata, Op. 35 in B flat minor.....<i>Chopin</i><br/>         Grave—Doppio movimento<br/>         Scherzo<br/>         Marche Funebre<br/>         Finale—Presto<br/>         e. Scherzo in B minor, Op. 20.....<i>Chopin</i></p> |
|--|---|

#### II.

- |   |  |
|---|--|
| <p>a. Bolero, Opus 19.....<i>Chopin</i><br/>         b. Nocturne in C minor, Op. 48.....<i>Chopin</i><br/>         c. Les deux Alouettes (The Two Skylarks)<br/>         .....<i>Leschetizky</i><br/>         d. Etude Heroique .....<i>Leschetizky</i></p> | <p>e. Legende (St. Francis Walking on the<br/>         Waves) .....<i>Liszt</i><br/>         f. Rigoletto Paraphrase .....<i>Liszt</i><br/>         g. Arabesques on the Blue Danube Valse<br/>         .....<i>Schulz-Evler</i></p> |
|---|--|

STEINWAY PIANO USED

## Recital by Francis Macmillen, Violinist

Gladys Shailer at the Piano

February 14, 1917, 8:30 o'clock

### PROGRAMME

- |   |  |
|---|--|
| <p>1. Concerto (1st movement).....<i>Tschaiłowsky</i><br/>         2. (a) Ave Maria .....<i>Schubert</i><br/>         (b) Minuet .....<i>Mozart</i><br/>         (c) Serenade .....<i>Arensky</i><br/>         (d) Zapeteado .....<i>Sarasate</i></p> | <p>3. (a) Barcarole .....<i>Macmillen</i><br/>         (b) Nijinsky (Mazurka) .....<i>Macmillen</i><br/>         (c) Serenade Negre .....<i>Macmillen</i><br/>         (d) Introduction and Tarantelle.....<i>Sarasate</i><br/>         4. Andante and Finale from the Concerto<br/>         .....<i>Mendelssohn</i></p> |
|---|--|

BALDWIN PIANO USED



## Calendar 1916-17

### SEPTEMBER

- 15—Opening exercises 10 A.M.
- 30—Y. M. C. A. reception at Centre.

### OCTOBER

- 6—Y. W. C. A. reception.
- 9—High Bridge picnic.
- 13—First Presbyterian Church reception.
- 14—Picnic at the Knobs.
- 31—Hallowe'en party at Centre.

### NOVEMBER

- 1—Faculty tea.
- 3-5—1916 Class reunion.
- 10—Arbor Day exercises.
- 17—Violin recital: Miss Dessery.
- 18—Junior party.
- 25—Literary Society meeting.
- 27—Artist Series: Helen Stanley.
- 29—Thanksgiving basketball game.
- 30—Thanksgiving party.

### DECEMBER

- 6—Faculty tea.
- 11—Artist Series: Christine Miller.
- 13—Christmas party.
- 15-Jan. 4—Christmas vacation.

### JANUARY

- 11—Artist Series: Mme. Leginska.
- 19—Ernst Debate at Centre College.
- 27—Literary Society meeting.
- 29—Feb. 2—Semester examinations.

### FEBRUARY

- 2—Organ recital: Miss Shailer.
- 3—Basketball: K. C. W. vs. K. W. C.

7—Faculty tea.

- 10—Basketball: K. C. W. vs. Louisville.
- 14—Artist Series: Francis Macmillen
- 16—Basketball: K. C. W. vs. K. W. C. (Winchester).
- 17—Basketball: K. C. W. vs. State.
- 24—Junior Shadow Pantomime.
- 27—Choral Club concert.

### MARCH

- 2—Basketball: K. C. W. vs. State (Lexington).
- 7—Faculty tea.
- 9—Recital.
- 10—Basketball: Red vs. Black.
- 16—Senior play.
- 17—Basketball: Red vs. Black.
- 23—Recital: Miss Porter.
- 24—Circus.
- 30—April 9—Spring vacation.

### APRIL

- 13—Expression recital: Miss Oak.
- 24—Recital.
- 27—Recital: Pupils in Expression.

### MAY

- 5—May Day: Shakespeare play.
- 11—Junior reception.
- 18—Faculty play: Sherwood.
- 19—Athletic banquet.
- 28-June 1—Final examinations.

### JUNE

- 3—Baccalaureate.
- 4—Alumnae banquet.
- 5—Class Day.
- 6—Fifty-sixth Annual Commencement.



## ENERGINE

Get ready for Commencement. Have your  
Party Dresses, Suits, Shoes, Gloves, Etc.  
cleaned by us. Exclusive users of  
ENERGINE IN Dry Cleaning.

THE BENZOL WAY

The Danville Laundry &  
Dry Cleaning Co., Inc.

## Miss Emma Tadlock MODISTE

118 North Third Street  
Telephone 142 DANVILLE, KY.

For Complete House Furnishings

CALL

A. F. Wheeler Furniture  
Company

450 — TELEPHONE — 450

## B. J. DURHAM HARDWARE

*Home Furnishing Goods  
General Repairing*

SPECIAL RATES TO STUDENTS

FOR

*Annual and College  
Publications*

## Steffens-Berry Studio

*Photographs*

654 Fourth Avenue  
LOUISVILLE, KENTUCKY

The *Choicest Novelties* and the  
*Newest Things in Millinery* are  
always found at the *Leading Shop*.

## NOEL SISTERS

Third Street Danville, Ky.

## CHESTNUT SALTER HARDWARE

*Hardware, Stoves, Ranges*

EVERYTHING FOR  
THE KITCHEN

With Best Wishes

FROM

A FRIEND

Compliments

OF

A FRIEND

With Best Wishes

FROM

A FRIEND

With the Girls  
at Heart

K. C. W. TEACHERS ARE  
WISE (?)

Are you providing for the rainy  
day, with first-class

Endowment Insurance

Do not rely on men.

GEO. D. HOPPER, Agent

(I would be dee-lighted to have an  
interview)

Taylor Livery Co.

Next Door to Gilcher Hotel

*High-Class Livery and  
Transfer Business*

TELEPHONE 98

PROMPT AUTOMOBILE SERVICE

BUS MEETS ALL TRAINS

THE FAIR STORE

A. GROBAN

Proprietor

*Ladies' and Gent's*

*Furnishings*

BOYLE BANK  
AND TRUST  
COMPANY

Solicits Your Account

