

Historic Salem incorporated

OFFICE AT OLD TOWN HALL

POST OFFICE BOX 865 SALEM, MASSACHUSETTS 01970 / PHONE (617) 745-0799

10 Smith Street

Built by,

SAMUEL D. TILTON, housewright

in 1852

Research by, Ann Meere

Date Verification by, Joyce King

Dec. 1983

*"to preserve Historic Sites, Buildings and objects,
and to work for the education of the community
in the true value of the same."*

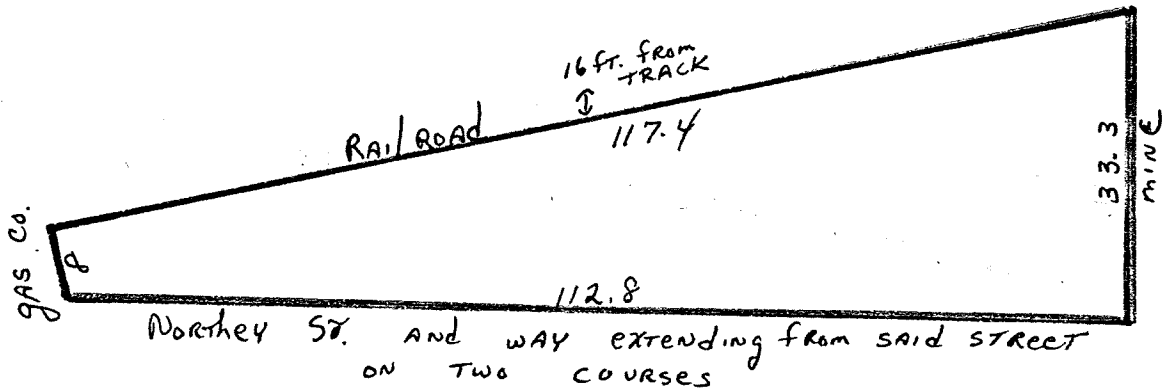
10 Smith Street

Book 466 page 168

May 25, 1852

\$84.51

John H. Nichols sold a lot of land to Samuel D. Tilton, housewright:



Book 466 page 169

August 24, 1852

\$275

Samuel D. Tilton mortgaged his land "with a dwelling house and all other buildings standing on the premises." to John H. Nichols, trustee under the will of Sarah Phippen. This was the same land conveyed on May 25, 1852.

Book 500 page 73

August 31, 1854

Samuel D. and Eliza Tilton sold this land and dwelling house to John H. Nichols. This transaction included three other parcels in Salem. Mr. Tilton was evidently in financial difficulty at this time and lost his property.

Book 600 page 181

Jan. 17, 1860

\$500

John H. Nichols sold the land and dwelling house to James Dean, laborer. "Being a portion of the estate conveyed by Samuel D. Tilton on August 31, 1854."

Book 1009 page 296
Dec. 17, 1878

James Dean sold the land and dwelling house to Patrick Dean. "The lot I purchased of John H. Nichols on Jan. 17, 1860."

Book 1029 page 157
Jan. 2, 1880

Patrick and Hanora Dean sold the land and dwelling house and other buildings to Mary Dean, widow.

Book 1128 page 263
May 5, 1884

Mary Dean (signed with an X), widow, sold the land and building to James F. Dean.

Book 1785 page 172
July 27, 1905

James F. and Margaret E. Dean sold the land and building to the First National Bank. (This transaction included real estate on Washington Sq.)

Book 2302 page 562
July 22, 1915

The First National Bank sold the land and building to Agnes Dean. "The same premises conveyed to the First National Bank by deed of James F. Dean on July 27, 1905."

Book 4603 page 395
Sept. 28, 1959
\$1,000

Henry J. O'Donnell Jr., administrator of the estate of Agnes G. Dean, sold the land and building to Samuel J., Mary B. and Robert E. Gonyea. "The same premises granted to Agnes G. Dean by deed of The First National Bank on July 22, 1915."

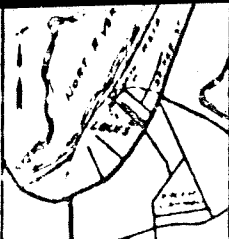
Book 5491 page 308
Nov. 10, 1967

Robert Gonyea sold his share of the estate to Samuel J. Gonyea.

Book 6776 page 727
Dec. 12, 1980

The heirs of Samuel J. Gonyea sold the land and building to Ann Meere. "For title see deed Nov. 10, 1967 recorded in deed book 5491 page 308 and the estate of Samuel Gonyea."

Reference to book and page are deed books at the Registry of Deeds. Probate numbers are cases at Probate Court. Both offices are located in the same building on Federal St. All maps in this report are not meant to be exact, just for illustration purposes.



LOCUS MAP
Scale 1" = 2000'

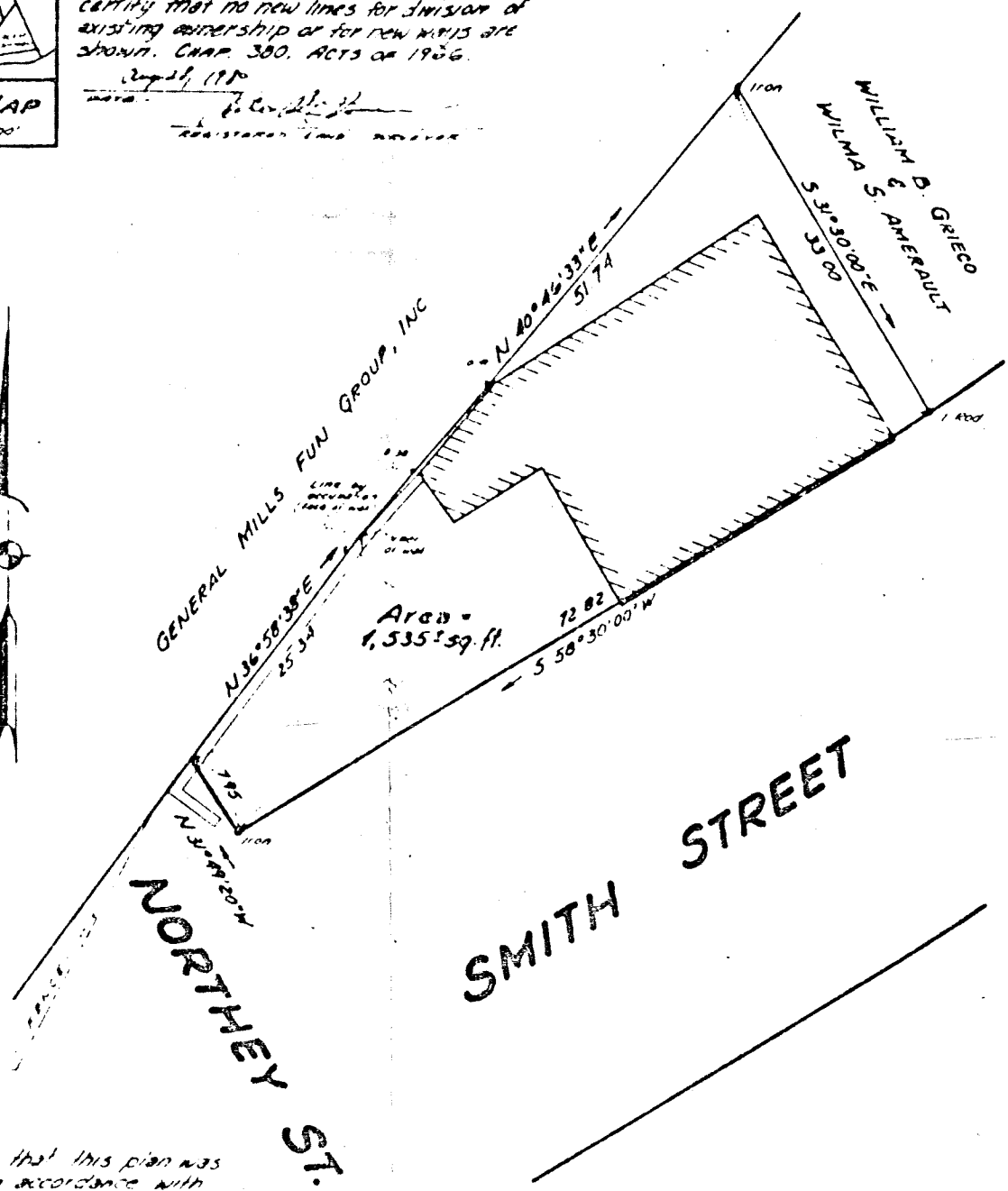
266
1980

THIS MAP HAS BEEN REDUCED. FOR
CORRECT SCALING SEE ORIGINAL ON FILE.



I certify that the property lines shown on this plan are the lines dividing existing ownerships and the lines of streets and ways shown are those of public and private streets and ways already established, and I further certify that no new lines for division of existing ownership or for new ways are shown. CHAP. 300, ACTS OF 1956.

Aug 28, 1990
John P. O'Brien
Registered Land Surveyor



I certify that this plan was prepared in accordance with the rules and regulations of the Registers of Deeds

John P. O'Brien
Registered Land Surveyor

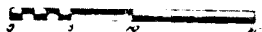
ESSEX REGISTER OF DEEDS, SO DIST SALEM MASS
Received Dec 22, 1982, with Record
Tertrude Migliorini
to Ann Melre
cc 86776 P 737 filed as No 266 1988

John P. O'Brien
Register of Deeds

PLAN OF LAND
IN
SALEM, MASS.

Property of
ESTATE OF
SAMUEL J. GONYEA

Scale 1" = 10' Aug 28, 1990



ESSEX SURVEY SERVICE, INC.
47 Federal Street, Salem, Mass



Eastern Rail Road

SKERRY

CONANT

PEARL

SAUNDERS

CROSS

WINTER

STREET

STREET

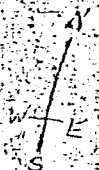
STREET

STREET

WASHINGTON SQUARE

1851

1851



HOWARD STREET CEMETERY

BRIGGS

STREET

STREET

STREET

ORRESTER

ST PETERS

STREET

STREET

STREET

STREET

STREET

STREET

STREET

STREET

STREET

STREET

STREET

STREET

STREET

STREET

STREET

STREET

STREET

STREET

STREET

STREET

STREET

STREET

STREET

STREET

STREET

STREET

STREET

STREET

STREET

STREET

STREET

STREET

STREET

STREET

STREET

STREET

STREET

STREET

STREET

STREET

STREET

STREET

STREET

STREET

STREET

STREET

STREET

STREET

STREET

STREET

STREET

STREET

STREET

STREET

STREET

STREET

STREET

STREET

STREET

STREET

STREET

STREET

STREET

STREET

STREET

STREET

STREET

STREET

STREET

STREET

STREET

STREET

STREET

STREET

STREET

STREET

STREET

STREET

STREET

STREET

STREET

STREET

STREET

STREET

STREET

STREET

STREET

STREET

STREET

STREET

STREET

STREET

STREET

STREET

STREET

STREET

STREET

STREET

STREET

STREET

STREET

STREET

STREET

STREET

STREET

STREET

STREET

STREET

STREET

STREET

STREET

STREET

STREET

STREET

STREET

STREET

STREET

STREET

STREET

STREET

STREET

STREET

STREET

STREET

STREET

STREET

STREET

STREET

STREET

STREET

STREET

STREET

STREET

STREET

STREET

STREET

STREET

STREET

STREET

STREET

STREET

STREET

STREET

STREET

STREET

STREET

STREET

STREET

STREET

STREET

STREET

STREET

STREET

STREET

STREET

STREET

STREET

STREET

STREET

STREET

STREET

STREET

STREET

STREET

STREET

STREET

STREET

STREET

STREET

STREET

STREET

STREET

STREET

STREET

STREET

STREET

STREET

STREET

STREET

STREET

STREET

STREET

SAUNDERS ST.

S.T.

ARBELLA ST.

S.T.



NORTH MAIN ST.

LEMON ST.

CROSS ST.

STREET

WINTH ST.

SPRUCE ST.

D. A. Roberts

Jno. Morse

Mrs. Doherty

Geo. H. Upton

Samuel S. Skinner

Chas. W. Clement

Samuel S. Skinner

Sam. R. Honeycomb

Wm. H. Honeycomb

Wm. H. Honeycomb

Wm. H. Honeycomb

Wm. H. Honeycomb

Wm. H. Honeycomb

Wm. H. Honeycomb

Wm. H. Honeycomb

Wm. H. Honeycomb

Chas. W. Clement

Chas. W. Clement

Chas. W. Clement

Chas. W. Clement

Chas. W. Clement

Chas. W. Clement

Chas. W. Clement

Chas. W. Clement

Geo. H. Upton

Geo. H. Upton

Geo. H. Upton

Geo. H. Upton

Geo. H. Upton

Geo. H. Upton

Geo. H. Upton

Geo. H. Upton

Samuel S. Skinner

Samuel S. Skinner

Samuel S. Skinner

Samuel S. Skinner

Samuel S. Skinner

Samuel S. Skinner

Samuel S. Skinner

Samuel S. Skinner

Chas. W. Clement

Chas. W. Clement

Chas. W. Clement

Chas. W. Clement

Chas. W. Clement

Chas. W. Clement

Chas. W. Clement

Chas. W. Clement

Samuel S. Skinner

Samuel S. Skinner

Samuel S. Skinner

Samuel S. Skinner

Samuel S. Skinner

Samuel S. Skinner

Samuel S. Skinner

Samuel S. Skinner

W. LUMBER STORAGE

HAMILTON, BALCOMB & PETERSON

HAMILTON, BALCOMB & PATERSON

WOODBURY CT.

SMITH ST.

LEMON ST. CT.

CUMERTY
J.M.R. FENNELL
P.J. LYNCH
L.C. ADAMS
J.B. ROBERTS

LEMON ST. CT.

L. BUCKLEY
E. RIDDEN
W. MURPHY
J. DONOVAN
F. A. BELL
S. E. BALCOMB
J. S. BALCOMB
C.F. BABCOCK

S. R. HONEYCOMB HEIRS
S. S. UPTON

CROSS ST.

J. H. PHILLIPS
W. H. PHIPPEN
MADONNEY
J. M. BARNES HEIRS
J. C. FOSTER
W. B. JOHNSON HEIRS

SAUNDERS ST.

10

D.B. CAREY
J. WOODS
W.E. SWITZER
J.A. BARNES
E. WOODBURY

MRS. J.P. REYNOLDS
H.G. LEACH
H.F. BROWN

S.L. SIMPLE
G. LAMSON HEIRS
L. WOODBURY

LAMSON
E.L. WOODBURY
J. SCARDING HEIRS
J. STANTFORD

T. ABEN
F.H. BRADLEE
J. SCARDING HEIRS

NOBHELY ST.

R. WALLIS
J.I. HUTCHINSON
MARY A. TRUMBULL HEIRS
J.B. CURMEN HEIRS
J.I. HUTCHINSON

ELLEN M. DODD
E.A. HARRIS HEIRS
J. WOODBURY

S.T. ST.

W. H. PHIPPEN
G.D. PHIPPEN
CHAS. ENDICOTT
G. BARTON HEIRS
J.C. FOSTER
W.B. JOHNSON HEIRS

LEMON ST.

W. LUMBER STORAGE

W. LUMBER STORAGE

W. LUMBER STORAGE

W. LUMBER STORAGE

ST.

G. W. SIMMONS
W.C. HARRIS
S.E. SIMMONS ET AL.
J. DONALDSON
L. BROOKS JR. HEIRS
U.N. CHAPMAN HEIRS
M.E. BOWEN
C.A. SINCLAIR

ELIZA W. COLMAN HEIRS
J.B. PHILBRACK
A. D. TUCKERMAN
E. BROWN HEIRS
W.C. HARRIS
J.H. PHIPPEN
G.F. LORD

PARKER CT.

M. E. BOWEN
JOHN CASEY EST.
G.H. FIELD
D. HENDERSON

W. LUMBER STORAGE

ST.

MRS. G. L. HOUNGINS HEIRS
G.W. DODGE HEIR
A.J. CLARKE EST.

G.H. WARREN
L.W. FAIRFIELD
CHARLOTTE FAIRFIELD
LYNN & B. CO.

WEBSTER ST.

G.H. FIELD
D. HENDERSON

W. LUMBER STORAGE

ST.

G.H. WARREN
L.W. FAIRFIELD
CHARLOTTE FAIRFIELD
LYNN & B. CO.

W. LUMBER STORAGE

W. LUMBER STORAGE

W. LUMBER STORAGE

W. LUMBER STORAGE

ST.

MARY G. WARD
M.W. INNABLE
G.H. DANFORTH
A. POTTER
T. GOLOSATH
M. EDWARDS

HOUSE NO. 2

W. LUMBER STORAGE

W. LUMBER STORAGE

W. LUMBER STORAGE

ST.

MARY G. WARD
M.W. INNABLE
G.H. DANFORTH
A. POTTER
T. GOLOSATH
M. EDWARDS

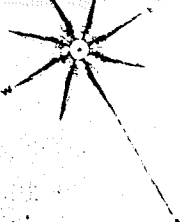
W. LUMBER STORAGE

W. LUMBER STORAGE

W. LUMBER STORAGE

W. LUMBER STORAGE

R i v e r.



PEARL

SHOE FACTORY

CROSS ST. COURT

SAUNDERS

CROSS

CAP. WORK

LEMON

SMITH

NORTHEY

13

1956