

OFFICE AT OLD TOWN HALL

Historic Salem Incorporated

POST OFFICE BOX 865 SALEM, MASSACHUSETTS 01970 / PHONE (617) 745-0799

12 HARDY STREET

Built by

STEPHEN WHIPPLE, carpenter

in 1845

Deed Research by,
Isabelle G. Szygula
Date Documentation by,
Joyce King
August 1987

*"to preserve Historic Sites, Buildings and objects,
and to work for the education of the community
in the true value of the same."*

RECORD OF TRANSFER OF DEED TO PROPERTY AT 12 HARDY ST., SALEM, MA

Date	Transferred to	Transferred by	Book Number	Page or Leaflet
1982 Dec. 23	Isabelle G. Szygula	Est. of Helen I. Bachorowski	7021	125
43 May 29	Helen I. Bachorowski	Mary Bachorowski	3332	212
13 Aug. 18	Mary Bachorowski	John M.J. Roche Thomas Little, Guardian John O'Brien, Administrator	2225	111
1894 Sept. 8	Alice Roche	Catherine Keating	1422	523
94 Apr. 5	Catherine Keating	Thomas A. Devine	1406	50
82 Jan. 4	Thomas A. Devine	William A. and Margaret Peterson	1073	291
-	"dwelling house & outbuilding"			
78 Apr. 24	Margaret Peterson	Stephen Whipple	996	39
-	see note 3 below.			
1844 Nov. 30	Stephen Whipple	Phillip Markoe (sic)	350	46
	Deed of this date refers to... "dwelling home outbuilding and woodshed".			

Selling price \$431.73 over

1. There is a reference in "The Salem Directory" for 1850 to "Stephen Whipple", house 12 Hardy
- * Stephen Whipple, listed as "carpenter" in S/D of 1846
2. Ref. to "Thomas Pope, laborer, 12 Hardy St." S/D also "George Ransdell, laborer, 12 Hardy St."
3. The Atlas of the City of Salem, Mass. by G. M. Hope 1874, Plate A pp. 10-11, shows a building at 12 Hardy St. with the same configuration as the existing residence, owned by S. Whipple.

1843 (5/6)	Markoe, Phillip	Green, James D. Etc. Timothy Dimen	337	20
1843	Wheatland, George (#1415 and all bldg. there on)	Green, James D.	337	14
1843	Green, James D. ... with the bldg. there on	Wheatland, George	337	14

12 HARDY STREET

BOOK 7021 PAGE 125

DATE - December 23, 1982
GRANTOR (seller) - Est. of Helen I. Bachorowski
GRANTEE (buyer) - Isabelle G. Szygula

BOOK 3332 PAGE 212

DATE - May 29, 1943
GRANTOR (seller) - Mary Bachorowski
GRANTEE (buyer) - Helen I. Bachorowski

BOOK 2225 PAGE 111

DATE - August 18, 1913
GRANTOR (seller) - John M.J. Roche; Thomas Little,
Guardian; John O'Brien, Administrator
GRANTEE (buyer) - Mary Bachoroski

BOOK 1422 PAGE 523

DATE - September 8, 1894
GRANTOR (seller) - Catherine Keating
GRANTEE (buyer) - Alice Roche

BOOK 1406 PAGE 50

DATE - April 5, 1894

GRANTOR (seller) - Thomas A. Devine

GRANTEE (buyer) - Catherine Keating

BOOK 1073 PAGE 291

DATE - January 4, 1882

GRANTOR (seller) - William A. and Margaret Peterson

GRANTEE (buyer) - Thomas A. Devine

BOOK 996 PAGE 39

DATE - April 24, 1878

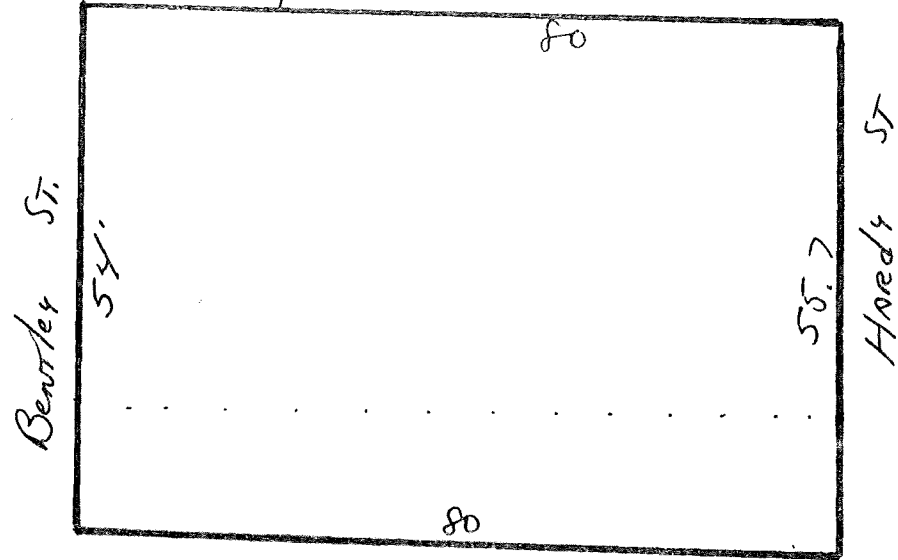
GRANTOR (seller) - Stephen Whipple

GRANTEE (buyer) - Margaret Peterson

DESCRIPTION - Land, dwelling house, barn and part of shed

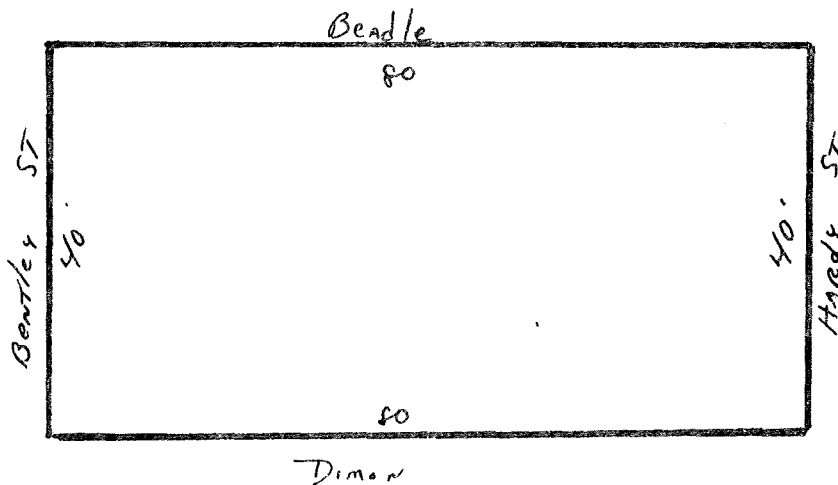
PREVIOUS REFERENCE - The same conveyed by Phillip Markoe on November 30, 1844 recorded in book 350 page 46. Also part of premises conveyed in book 451 page 230.

Upton formerly Beadle



BOOK 350 PAGE 46

DATE - November 30, 1844
GRANTOR (seller) - Phillip Markoe
GRANTEE (buyer) - Stephen Whipple
DESCRIPTION - Lot of land



DATE DOCUMENTATION

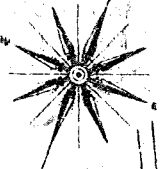
Salem tax records

Ward 1

1844	Whipple Stephen	lot of land	lives at 68 Derby St.
1845	Whipple Stephen	lot of land	"New house" 12 Hardy

Stephen Whipple, the son of Jonathan Whipple, was born in Salem on April 5, 1820. Mr. Whipple had several occupations during his lifetime. He was listed as carpenter in the 1840's, was for a time involved in the gum copal cleaning business and later a dealer in wood and coal. He died on January 18, 1890.

9 1956



ESSEX

BENTLEY

HARDY

TURNER

DERBY

CARLTON

WHITE

3

8

TURNER HALL

6

12

OIL STONE No

BOTTING Wks

K.D.

PARKING

TURNE Wks

Club

Club

Club

Club

Club

Club

Club

Club

Club

Club

Club

Club

Club

Club

Club

Club

Club

Flats

Flats

Flats

Flats

Flats

Flats

Flats

Flats

Flats

Flats

Flats

Flats

Flats

Flats

Flats

Flats

Flats

Flats

Flats

Flats

Flats

Flats

Flats

Flats

Flats

Flats

Flats

Flats

Flats

Flats

Flats

Flats

Flats

Flats

Flats

Flats

Flats

Flats

Flats

Flats

Flats

Flats

Flats

Flats

Flats

Flats

Flats

Flats

Flats

Flats

Flats

Flats

Flats

Flats

Flats

Flats

Flats

Flats

Flats

Flats

Flats

Flats

Flats

Flats

Flats

Flats

Flats

Flats

Flats

Flats

Flats

Flats

Flats

Flats

Flats

Flats

Flats

Flats

Flats

Flats

Flats

Flats

Flats

Flats

Flats

Flats

Flats

Flats

Flats

Flats

Flats

Flats

Flats

Flats

Flats

Flats

Flats

Flats

Flats

Flats

Flats

Flats

Flats

Flats

Flats

Flats

Flats

Flats

Flats

Flats

Flats

Flats

Flats

Flats

Flats

Flats

Flats

Flats

Flats

Flats

Flats

Flats

Flats

Flats

Flats

Flats

Flats

Flats

Flats

Flats

Flats

Flats

Flats

Flats

Flats

Flats

Flats

Flats

Flats

Flats

Flats

Flats

Flats

Flats

Flats

Flats

Flats

Flats

Flats

Flats

Flats

Flats

Flats

Flats

Flats

Flats

Flats

Flats

Flats

Flats

Flats

Flats

Flats

Flats

Flats

Flats

Flats

Flats

Flats

Flats

Flats

Flats

Flats

Flats

Flats

Flats

Flats

Flats

Flats

Flats

Flats

Flats

Flats

Flats

Flats

Flats

Flats

Flats

Flats

Flats

Flats

Flats

Flats

Flats

Flats

Flats

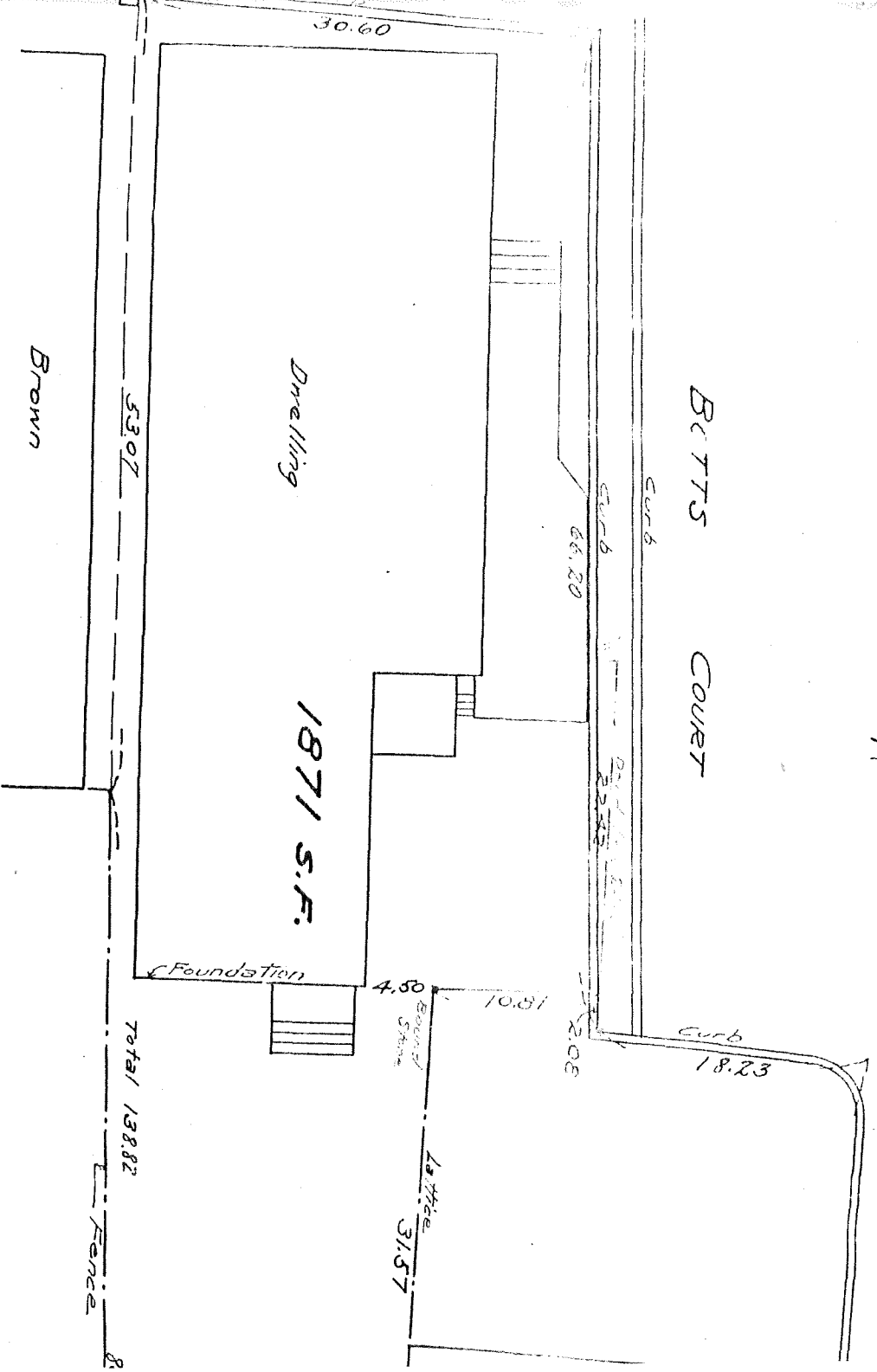
Flats

Flats

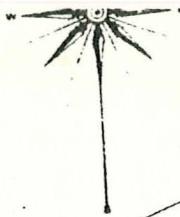
LAND OF ESTATE OF DANIEL LOW
SALEM, MASS.

SCALE 1 IN = 10 FT
OCTOBER, 1914.

Thomas A. Apperson C.E.



Salem, Nov. 17, 1914. Rec'd Ent. in Grant Reg. Books



FEDERAL

NORTH

60'

EATON PL.

NORTH CHURCH
(UNITARIAN)
AND PARSONS

RED CROSS

ROPER MEMORIAL

ESSEX

SUMMER

CAMBRIDGE

SALEM ATHENAEUM

AMERICAN
LEOPARD POST OFFICE

THE ROSEWAY
ROOMS

CHESTNUT

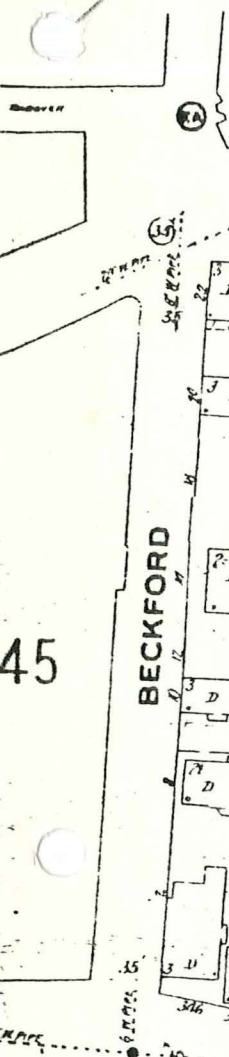


Copyright 1917 by the Standard Map Co.

45

BECKFORD

HAMILTON



1897

5

