

Historic Salem incorporated

OFFICE AT OLD TOWN HALL

POST OFFICE BOX 865 SALEM, MASSACHUSETTS 01970 / PHONE (617) 745-0799

12 CONANT STREET

Built for

JOHN CONANT, yeoman

in 1833

Research by,
Joyce King
February 1987

*"to preserve Historic Sites, Buildings and objects,
and to work for the education of the community
in the true value of the same."*

12 CONANT STREET

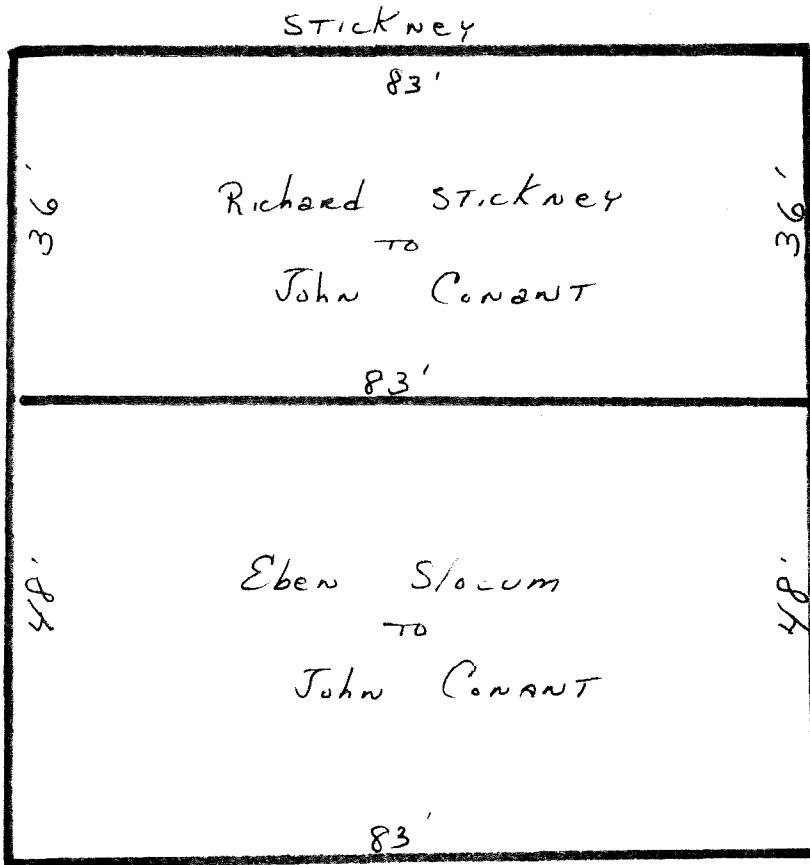
BOOK 297 PAGE 97

DATE -	April 23, 1833
CONSIDERATION -	\$130
GRANTOR (seller) -	Richard Stickney, housewright
GRANTEE (buyer) -	John Conant of Beverly
DESCRIPTION -	Parcel of land
PREVIOUS REFERENCE -	Part of land purchased of John Young and Elizabeth his wife, recorded in book 239 page 76.

BOOK 297 PAGE 98

DATE -	April 23, 1833
CONSIDERATION -	\$200
GRANTOR (seller) -	Eben Slocum, mason
GRANTEE (buyer) -	John Conant of Beverly
DESCRIPTION -	Parcel of land
PREVIOUS REFERENCE -	None given

Way leading from Bridge St. to S. Steer's



STICKNEY

83'

Richard STICKNEY
TO
John CONANT

36'

36'

wells

83'

Eben Slocum
TO
John CONANT

48'

48'

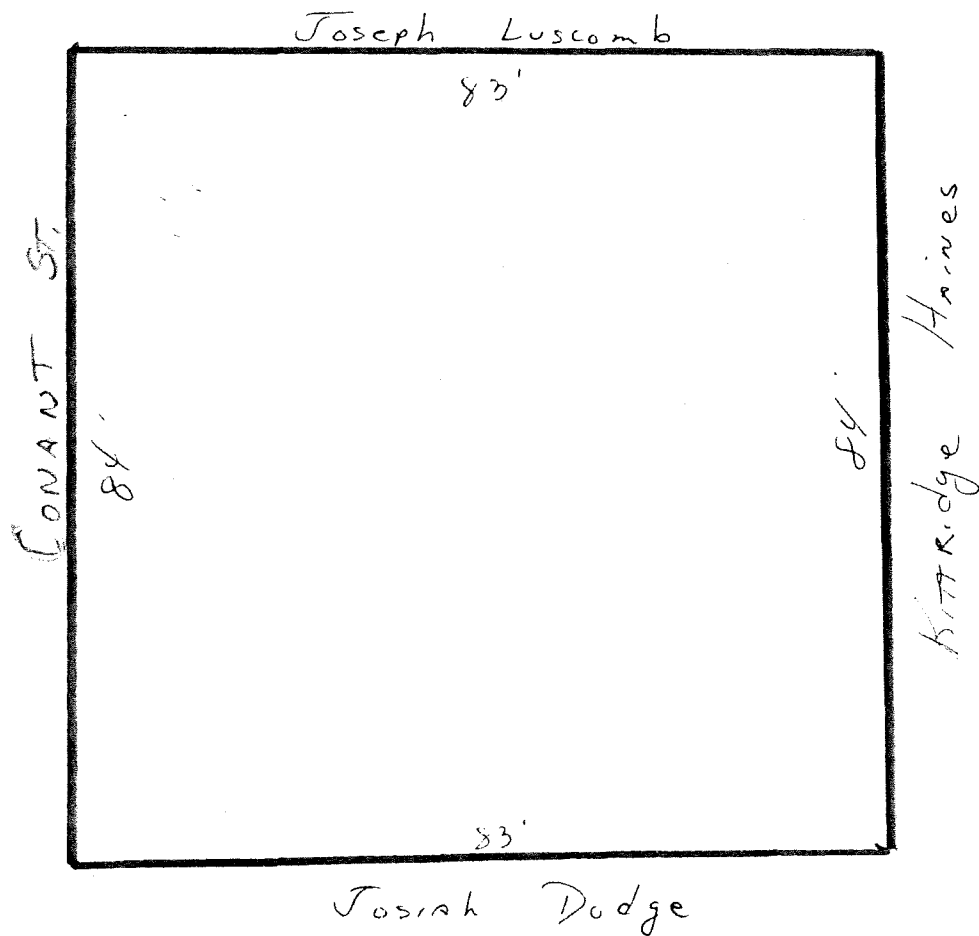
moses

83'

Josiah Dodge JR.

BOOK 351 PAGE 225

DATE - February 26, 1845
CONSIDERATION - \$1,500
GRANTOR (seller) - John Conant of Beverly, yeoman
GRANTEE (buyer) - Thomas Holmes
DESCRIPTION - Land and buildings
PREVIOUS REFERENCE - The same I purchased of Richard Stickney and Eben Slocum as recorded in book 297 page 97 and 98.



BOOK 364 PAGE 174

DATE - The date of this transaction is in question since the second page of the deed is missing. (The deed recorded before this one was entered on March 9, 1846.)

CONSIDERATION - \$2,000

GRANTOR (seller) - Thomas Holmes, merchant

GRANTEE (buyer) - John Hammond of Beverly

DESCRIPTION - Land and buildings on Conant St.

PREVIOUS REFERENCE - This reference is also missing.

BOOK 854 PAGE 1

DATE - May 6, 1872

CONSIDERATION - \$2,475

GRANTOR (seller) - Robert Lee and Hannah C., his wife, in her own right and Edward Ames and Sarah D., his wife, in her own right

GRANTEE (buyer) - George E. Goldthwaite

PREVIOUS REFERENCE - Meaning to convey the same parcel of land described in deed of Thomas Holmes to John Hammond on March 7, 1846 and recorded in book 364 page 174.

BOOK 964 PAGE 18

DATE - November 7, 1876

CONSIDERATION - None given

GRANTOR (seller) - George Goldthwaite

GRANTEE (buyer) - George Wheatland

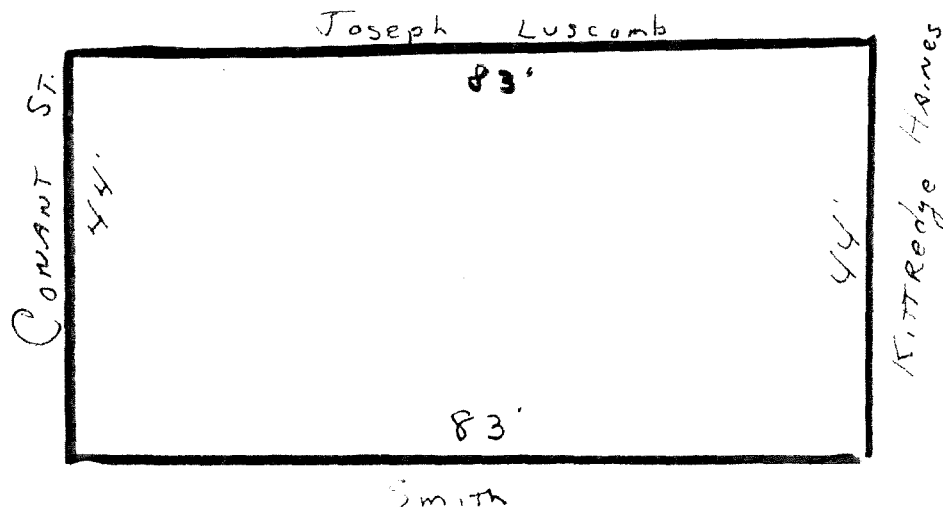
DESCRIPTION - Real estate

BOOK 964 PAGE 19

DATE - November 7, 1876
CONSIDERATION - None given
GRANTOR (seller) - George Wheatland
GRANTEE (buyer) - Sophronia E. Goldthwaite wife of George
DESCRIPTION - Real estate
PREVIOUS REFERENCE - The same real estate conveyed to George E. Goldthwaite by Robert Lee et al.

BOOK 2585 PAGE 393

DATE - January 11, 1924
CONSIDERATION - None given
GRANTOR (seller) - Marilla Goldthwait unmarried
GRANTEE (buyer) - Fred and Fannie Berkowitz
PREVIOUS REFERENCE - Being the same premises conveyed to my late mother Sophronia E. Goldthwait by deed of George Wheatland on November 7, 1876. See also probates 96874 and 117232.
(A portion of the original lot, now 10 Conant St., was sold in 1886)



BOOK 2609 PAGE 516

DATE - August 20, 1924
CONSIDERATION - None given
GRANTOR (seller) - Fred and Fannie Berkowitz
GRANTEE (buyer) - Edward A. and Margaret C. Morris
DESCRIPTION - Land and buildings
PREVIOUS REFERENCE - Being the same premises conveyed to us by deed of Marilla Goldthwaite on January 11, 1924

BOOK 3025 PAGE 461

DATE - January 18, 1935
CONSIDERATION - None given
GRANTOR (seller) - Margaret Morris unmarried
GRANTEE (buyer) - Roger Conant Co-operative Bank
DESCRIPTION - Land and buildings
PREVIOUS REFERENCE - Being the same premises conveyed to Edward A. and Margaret Morris by deed of Fred Berkowitz et ux on August 20, 1924.

Margaret Morris widow, sometimes known as Margaret C. Morris, did by deed mortgage to the Roger Conant Co-operative Bank, the bank foreclosed November 9, 1939. (book 3201 page 389)

BOOK 3256 PAGE 227

DATE - May 10, 1941
CONSIDERATION - None given
GRANTOR (seller) - Roger Conant Co-operative Bank
GRANTEE (buyer) - Esther A. Cahill
DESCRIPTION - Land and buildings
PREVIOUS REFERENCE - Being the same premises conveyed to the bank by Foreclosure deed of Margaret Morris November 9, 1939.

BOOK 4302 PAGE 92

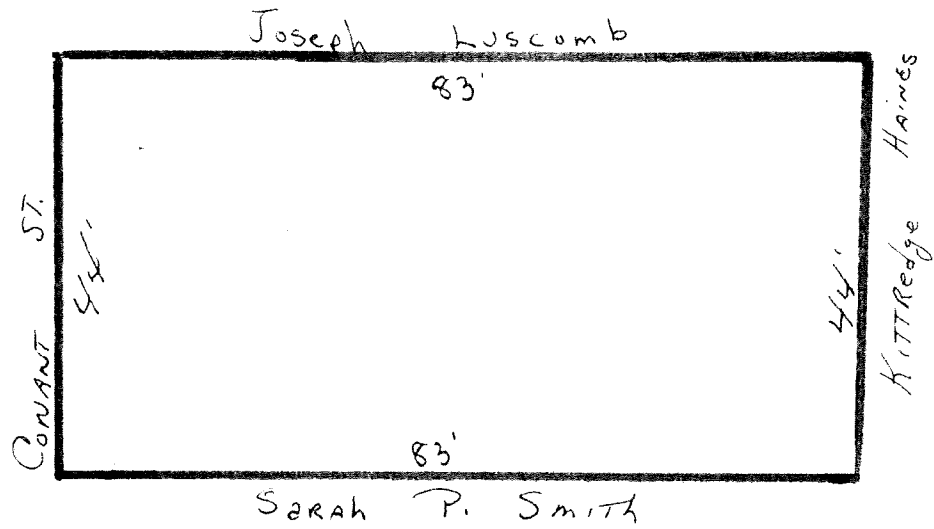
DATE - August 29, 1956
CONSIDERATION - Less than \$100
GRANTOR (seller) - Esther A. Cahill
GRANTEE (buyer) - Mildred A. Coffey, a widow
DESCRIPTION - Land and buildings
PREVIOUS REFERENCE - Being the same premises conveyed to Esther A. Cahill by deed of Roger Conant Co-operative Bank on May 10, 1941.

BOOK 4302 PAGE 93

DATE - August 29, 1956
CONSIDERATION - Less than \$100
GRANTOR (seller) - Mildred A. Coffey
GRANTEE (buyer) - Esther A. Cahill and Ruth E. Cahill
DESCRIPTION - Land and buildings
PREVIOUS REFERENCE - Being the same premises conveyed to Mildred A. Coffey by deed of Esther Cahill of an even date.

BOOK 5829 PAGE 673

DATE - December 17, 1971
CONSIDERATION - \$17,000
GRANTOR (seller) - Ruth E. Cahill
GRANTEE (buyer) - Donald A. and Carol E. Murtaugh
DESCRIPTION - Land and buildings
PREVIOUS REFERENCE - The same premises conveyed to Esther Cahill and Ruth E. Cahill by deed of Mildred A. Coffey on August 29, 1956.



Reference to book and page are deed books at the Registry of Deeds. Probate numbers are cases at Probate Court. Both offices are located in the same building on Federal St. All maps in this report are not meant to be exact, just for illustration purposes.

DATE DOCUMENTATION

12 CONANT STREET

"Conant street was a "twelve feet way now laid out from the ferry lane to the house and barn of John Peters" in 1781; and was a private way in 1820. It was called Conant street in 1850." (Essex Antiquarian Vol. 8 page 152)

It appears that John Conant had this house built, the same year he purchased the land, as an investment and never used it as his personal residence. He is listed in the tax records under the classification of non-resident (Beverly), this house being valued at \$1,000 during the 1830's.

The first occupants, at 12 Conant St., were Stephen Whitemore Jr. and Thomas Gwinn. Both men were in the cordage or ropemaking business. Mr. Whitemore's factory was at 48 Bridge St. Mr. Gwinn's place of business was on March St.

In 1837 the tenants were Joseph Gardner, a baker, and John Noyes ropemaker. The 1842 listing shows Joseph Gardner still living here along with Azor Hodgkins who had the unusual occupation of hair manufactory.

This ad placed in the Salem Gazette in April of 1845 clearly dates this house as 1833:

"Will be sold by auction, on the premises. The two story dwelling house, No. 12 Conant Street, with the out buildings in rear and land under and adjoining, being 84 feet front and rear, and 83 feet deep. The house was built about 12 years since, has recently been thoroughly repaired, and is now in perfect order. It contains twelve finished and two unfinished rooms, cellar under the whole, and is a remarkably convenient tenement for two families.

The garden can, without material injury to the estate, be used for a building lot.

The premises can be viewed at any time previous to sale, by applying to the auctioneer. Conditions liberal."

George Nichols aucr.

E. GOLDTHWAIT DIED YESTERDAY

Was the Oldest Ex-Conductor
of the Old Eastern Rail-
road; Was in His 92d Year;
Sketch of His Life.

George E. Goldthwait, the oldest ex-conductor on the old Eastern railroad, died suddenly at his home, 12 Conant street, yesterday, in his 92d year. He suffered a shock after breakfast, and passed away this afternoon about 1 o'clock.

Mr. Goldthwait was born in Weston, Jan. 28, 1822, his parents being the late Willard and Dolly (Johnson) Goldthwait. When he was a child, his father and mother moved to Wayland, and there he received his education. After completing his schooling, he was apprenticed to carriage painting and harness making in West Newton, where he remained four years. The business did not agree with him, and he returned to Wayland.

He was variously employed until 1846, when he came to Salem. He applied, one morning, for a place on a passenger train on the old Eastern railroad. He was met with a rebuff, and went away disheartened. Next morning he again sought the depot, seeking employment. The train from Newburyport came in, and the official said to him, "Get on that train, and go to Boston, and let us see what you can do." He gladly accepted the chance to brake the train, and was given a position that day as brakeman. He was soon promoted to baggage master, and after five years' service, was made a conductor. He continued as conductor 16 years,

and as such passed through hardships incident to the life of a railroad man. On one occasion a heavy snow storm he was blocked at the Stetson farm, Swampscott, by a freight train. He was obliged to use his own engine

To Help Push the Freight

out of the way, and when he attempted to get back to his own engine he was unable to do so, owing to the snow having drifted so badly. He started for Beverly, in order to turn his engine around, but got no further than Salem and he was unable to return to Swampscott. A two-horse sleigh was pressed into service, but when the present Loring farm was reached, the horses were so exhausted that it was deemed unsafe to attempt to go any further, and they came back to Salem. Next morning engines from Boston pushed the train to Salem.

On another occasion he left Beverly during a severe snow storm for Boston at 10 o'clock. The train was stuck at Lynn until 3 o'clock in the afternoon, when another start was made for Boston, and he finally reached Boston at dark. Next morning there was five feet of snow on the ground, and Superintendent Prescott ordered him to try to take a train to Salem. He made the attempt, but succeeded in only reaching Everett. There they worked an hour and a half in an effort to proceed, and finally returned to Prison Point. From there he walked into Boston, reaching the Hub at 3 o'clock in the afternoon. The temperature was 18 degrees below zero, and when he went into the conductors' room and reported, he fell unconscious to the floor. He was removed to Ticket Master Loring's house on Lowell street, and it was nine hours before he recovered consciousness. His blood was chilled, and he suffered agony for hours. The road

Granted Him a Leave of Absence

and it was six months before he was able to return to duty.

Another time he suffered severely when his train, to which three locomotives were attached, managed to make the passage from Beverly to Boston. One engine was disabled, and he found it necessary to go to a farmhouse and ask for something for the engineers and train hands to eat.

Mr. Goldthwait was full of reminiscences of his days on the railroad, and could relate many interesting stories. Among the souvenirs of those times he owned a handsome pair of goblets which were presented to him by the season ticket passengers, in 1852, a silver service being given at the same time to Conductor Cram of the train. Mr. Goldthwait ran the train all through the Civil war, and resigned the position on account of ill health, in 1866.

He was variously employed until about 16 years ago when he retired. He was a brother of the late Willard Goldthwait.

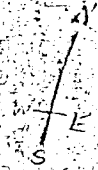
He married Miss Sophronia E. Smith, Jan. 27, 1852, and they lived happily together until her death June 14, 1906. He leaves a daughter, Miss Meyilla Goldthwait, with whom he lived.

1913 Nov. 12





1851



1851

WASHINGTON SQUARE

SKERBY

PEARL

SAUNDERS

CROSS

WINTER

PICKMOR

BRIGGS

WASHINGTON SQUARE

CONANT

ST. PETER'S

ST. JOHN'S

ST. MARY'S

ST. ANNE'S

ST. MICHAEL'S

ST. GEORGE'S

ST. PATRICK'S

ST. JAMES'S

ST. JOHN'S

WEBB

Mrs. Sims

J. Collier

Wm. Proctor

Wm. Proctor

Wm. Proctor

Wm. Proctor

Wm. Proctor

Wm. Proctor

Wm. Proctor

Wm. Proctor

Wm. Proctor

Wm. Proctor

Wm. Proctor

Wm. Proctor

Wm. Proctor

Wm. Proctor

Wm. Proctor

Wm. Proctor

Wm. Proctor

Wm. Proctor

Wm. Proctor

Wm. Proctor

Wm. Proctor

Wm. Proctor

Wm. Proctor

Wm. Proctor

Wm. Proctor

Wm. Proctor

Wm. Proctor

Wm. Proctor

Wm. Proctor

Wm. Proctor

Wm. Proctor

Wm. Proctor

Wm. Proctor

Wm. Proctor

Wm. Proctor

Wm. Proctor

Wm. Proctor

Wm. Proctor

Wm. Proctor

Wm. Proctor

Wm. Proctor

Wm. Proctor

Wm. Proctor

Wm. Proctor

Wm. Proctor

Wm. Proctor

Wm. Proctor

Wm. Proctor

Wm. Proctor

Wm. Proctor

Wm. Proctor

Wm. Proctor

Wm. Proctor

Wm. Proctor

Wm. Proctor

Wm. Proctor

Wm. Proctor

Wm. Proctor

Wm. Proctor

Wm. Proctor

Wm. Proctor

Wm. Proctor

Wm. Proctor

Wm. Proctor

Wm. Proctor

Wm. Proctor

Wm. Proctor

Wm. Proctor

Wm. Proctor

Wm. Proctor

Wm. Proctor

Wm. Proctor

Wm. Proctor

Wm. Proctor

Wm. Proctor

Wm. Proctor

Wm. Proctor

Wm. Proctor

Wm. Proctor

Wm. Proctor

Wm. Proctor

Wm. Proctor

Wm. Proctor

Wm. Proctor

Wm. Proctor

Wm. Proctor

Wm. Proctor

Wm. Proctor

Wm. Proctor

Wm. Proctor

Wm. Proctor

Wm. Proctor

Wm. Proctor

Wm. Proctor

Wm. Proctor

Wm. Proctor

Wm. Proctor

Wm. Proctor

Wm. Proctor

Wm. Proctor

Wm. Proctor

Wm. Proctor

Wm. Proctor

Wm. Proctor

Wm. Proctor

Wm. Proctor

Wm. Proctor

Wm. Proctor

Wm. Proctor

Wm. Proctor

Wm. Proctor

Wm. Proctor

Wm. Proctor

Wm. Proctor

Wm. Proctor

Wm. Proctor

Wm. Proctor

Wm. Proctor

Wm. Proctor

Wm. Proctor

Wm. Proctor

Wm. Proctor

Wm. Proctor

Wm. Proctor

Wm. Proctor

Wm. Proctor

Wm. Proctor

Wm. Proctor

Wm. Proctor

Wm. Proctor

Wm. Proctor

Wm. Proctor

Wm. Proctor

Wm. Proctor

Wm. Proctor

Wm. Proctor

Wm. Proctor

Wm. Proctor

Wm. Proctor

Wm. Proctor

Wm. Proctor

Wm. Proctor

Wm. Proctor

Wm. Proctor

Wm. Proctor

Wm. Proctor

Wm. Proctor

Wm. Proctor

Wm. Proctor

Wm. Proctor

Wm. Proctor

Wm. Proctor

Wm. Proctor

Wm. Proctor

Wm. Proctor

Wm. Proctor

Wm. Proctor

Wm. Proctor

Wm. Proctor

Wm. Proctor

Wm. Proctor

Wm. Proctor

Wm. Proctor

Wm. Proctor

Wm. Proctor

Wm. Proctor

Wm. Proctor

Wm. Proctor

Wm. Proctor

Wm. Proctor

Wm. Proctor

Wm. Proctor

Wm. Proctor

Wm. Proctor

Wm. Proctor

Wm. Proctor

Wm. Proctor

Wm. Proctor

Wm. Proctor

Wm. Proctor

Wm. Proctor

Wm. Proctor

Wm. Proctor

Wm. Proctor

Wm. Proctor

Wm. Proctor

Wm. Proctor

Wm. Proctor

Wm. Proctor

Wm. Proctor

Wm. Proctor

Wm. Proctor

Wm. Proctor

Wm. Proctor

Wm. Proctor

Wm. Proctor

Wm. Proctor

Wm. Proctor

Wm. Proctor

Wm. Proctor

Wm. Proctor

Wm. Proctor

Wm. Proctor

Wm. Proctor

Wm. Proctor

Wm. Proctor

Wm. Proctor

Wm. Proctor

Wm. Proctor

Wm. Proctor

Wm. Proctor

Wm. Proctor

Wm. Proctor

Wm. Proctor

Wm. Proctor

Wm. Proctor

Wm. Proctor

Wm. Proctor

Wm. Proctor

Wm. Proctor

Wm. Proctor

Wm. Proctor

Wm. Proctor

Wm. Proctor

Wm. Proctor

Wm. Proctor

Wm. Proctor

Wm. Proctor

Wm. Proctor

Wm. Proctor

Wm. Proctor

Wm. Proctor

Wm. Proctor

Wm. Proctor

Wm. Proctor

Wm. Proctor

Wm. Proctor

Wm. Proctor

Wm. Proctor

Wm. Proctor

Wm. Proctor

Wm. Proctor

Wm. Proctor

Wm. Proctor

Wm. Proctor

Wm. Proctor

Wm. Proctor

Wm. Proctor

Wm. Proctor

Wm. Proctor

Wm. Proctor

Wm. Proctor

Wm. Proctor

Wm. Proctor

Wm. Proctor

Wm. Proctor

Wm. Proctor

Wm. Proctor

Wm. Proctor

Wm. Proctor

Wm. Proctor

Wm. Proctor

Wm. Proctor

Wm. Proctor

Wm. Proctor

Wm. Proctor

Wm. Proctor

Wm. Proctor

Wm. Proctor

Wm. Proctor

Wm. Proctor

Wm. Proctor

Wm. Proctor

Wm. Proctor

Wm. Proctor

Wm. Proctor

Wm. Proctor

Wm. Proctor

Wm. Proctor

Wm. Proctor

Wm. Proctor

Wm. Proctor

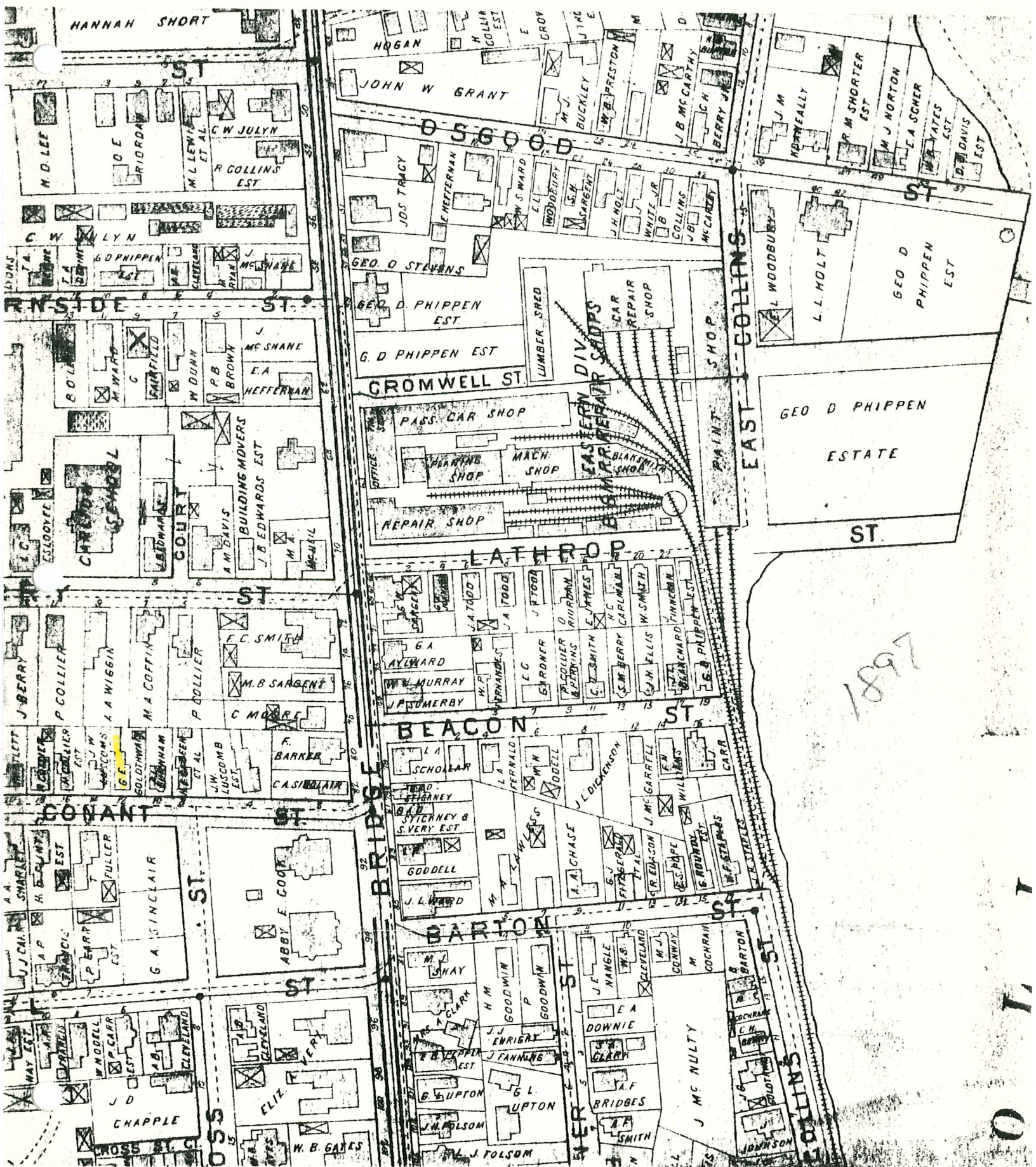
Wm. Proctor

Wm. Proctor

Wm. Proctor

Wm. Proctor

Wm. Proctor



1897

HANNAH SHORT

JOHN W GRANT

GOOD

EAST COLLINS

GEO D PHIPPEN ESTATE

ST

GROMWELL ST

LATHROP

BEACON ST

BARTON ST

CONANT ST

BRIDGE ST

ST

ST

ST

ST

ST

ST

ST

ST

ST

ST

ST

ST

ST

ST

ST

ST

ST

ST

ST

ST

ST

ST

ST

ST

ST

ST

ST

ST

ST

ST

ST

ST

ST

ST

ST

ST

ST

ST

ST

ST

ST

ST

ST

ST

ST

ST

ST

ST

ST

ST

ST

ST

ST

ST

ST

ST

ST

ST

ST

ST

ST

ST

ST

ST

ST

ST

ST

ST

ST

ST

ST

ST

ST

ST

ST

ST

ST

ST

ST

ST

ST

ST

ST

ST

ST

ST

ST

ST

ST

ST

ST

ST

ST

ST

ST

ST

ST

ST

ST

ST

ST

ST

ST

ST

ST

ST

ST

ST

ST

ST

ST

ST

ST

ST

ST

ST

ST

ST

ST

ST

ST

ST

ST

ST

ST

ST

ST

ST

ST

ST

ST

ST

ST

ST

ST

ST

ST

ST

ST

ST

ST

ST

ST

ST

ST

ST

ST

ST

ST

ST

ST

ST

ST

ST

ST

ST

ST

ST

ST

ST

ST

ST

ST

ST

ST

ST

ST

ST

ST

ST

ST

ST

ST

ST

ST

ST

ST

ST

ST

ST

ST

ST

ST

ST

ST

ST

ST

ST

ST

ST

ST

ST

ST

ST

ST

ST

ST

ST

ST

ST

ST

ST

ST

ST

ST

ST

ST

ST

ST

ST

ST

ST

ST

ST

ST

ST

ST

ST

ST

ST

ST

ST

ST

ST

ST

ST

ST

ST

ST

ST

ST

ST

ST

ST

ST

ST

ST

ST

ST

ST

ST

ST

ST

ST

ST

ST

ST

ST

ST

ST

ST

ST

ST

ST

ST

ST

ST

ST

ST

ST

ST

ST

ST

ST

ST

ST

ST

ST

ST

ST

ST

ST

ST

ST

ST

ST

ST

ST

ST

ST

ST

ST

ST

ST

ST

ST

ST

ST

ST

ST

ST

ST

ST

ST

ST

ST

ST

ST

ST

ST

ST

ST

ST

ST

ST

ST

ST

ST

ST

ST

ST

ST

ST

ST

ST

ST

ST

ST

ST

ST

ST

ST

ST

ST

ST

ST

ST

ST

ST

ST

ST

ST

ST

ST

ST

ST

ST

ST

ST

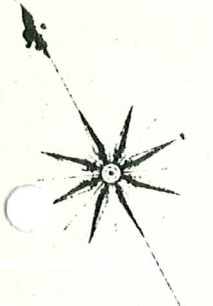
ST

ST

ST

ST

ST

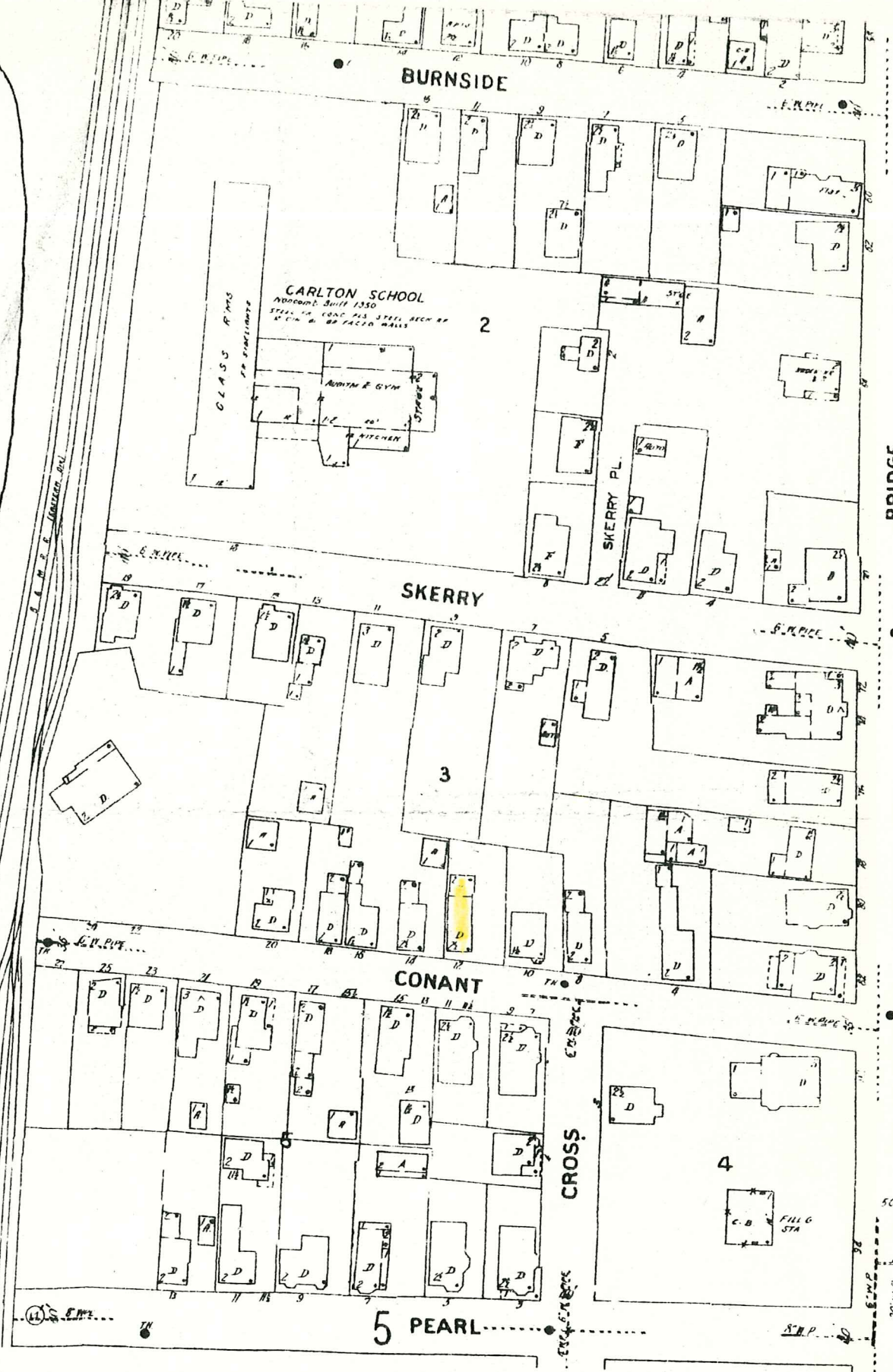


River

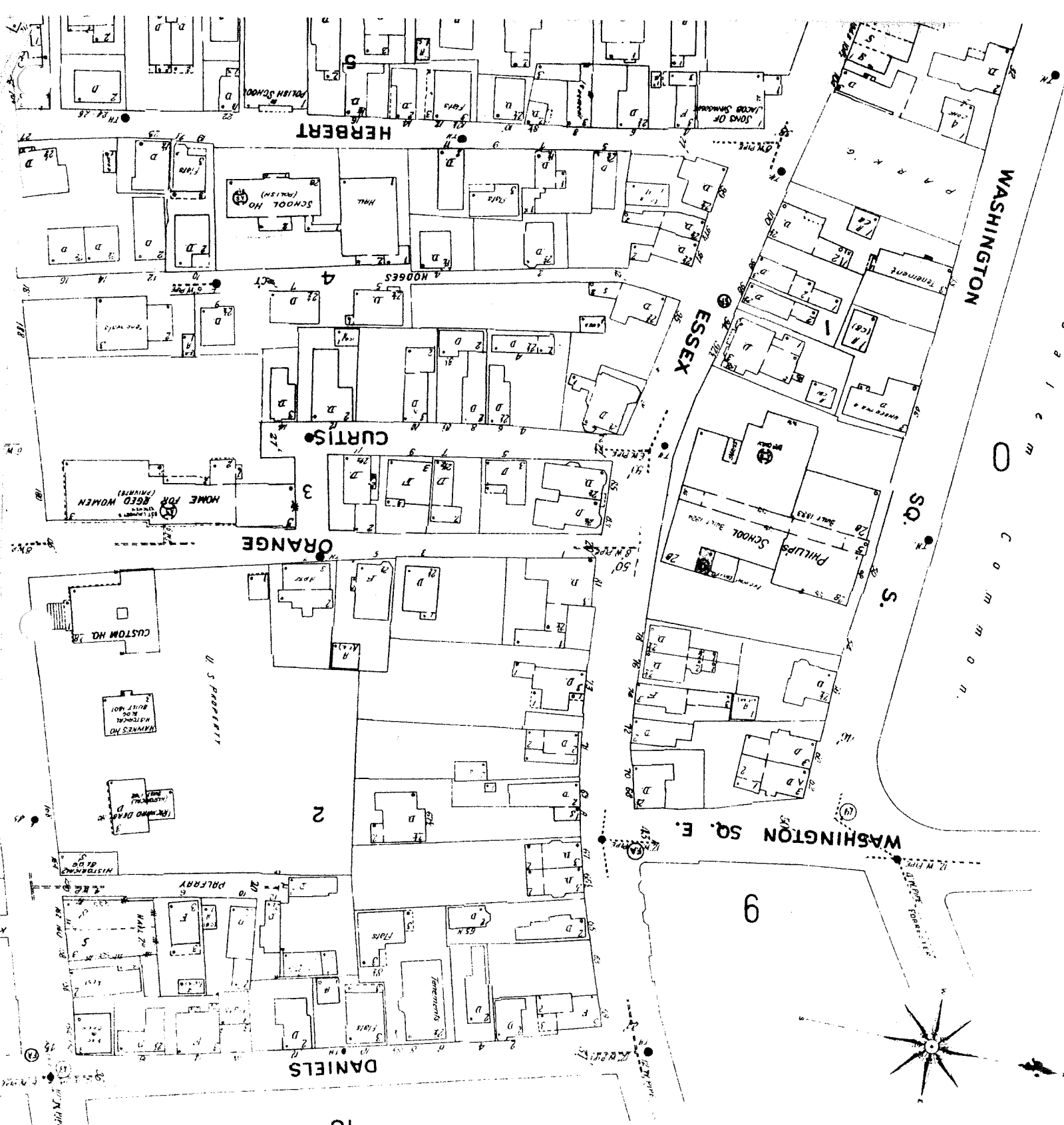
North



Copyright 1957 by The Sanborn Map Co



1956



1
0
C
O
M
M
O
N

S.
SQ.

ESSEX

HERBERT

CURTIS

ORANGE

DANIELS

WASHINGTON SQ. E.

WASHINGTON

9

10

