

MCLENNAN COMMUNITY COLLEGE

1997-98 FACT BOOK



NOVEMBER 1998

*Office of Institutional Effectiveness and Planning*

MCLENNAN COMMUNITY COLLEGE

1997-98 FACT BOOK

NOVEMBER 1998

Produced by the Office of Institutional Effectiveness and Planning

Paul Illich, Ph.D., Sr. Director of Institutional Effectiveness and Planning  
Cathy Hagan, Sr. Research Specialist  
Glenna Pritchard, Executive Secretary

## Preface

The MCC Factbook, published by the Office of Institutional Effectiveness and Planning, provides summary data on various areas of the campus. The factbook is divided into ten areas: introduction, general information, service area, student profile, student enrollment, student performance, faculty data, administration and classified staff, financial services, and comparative data. The purpose of the factbook is to provide a centralized source of frequently used campus information. In most cases, data are presented for the past 5 years. In addition, several sections include data from Fall and Spring semesters.

The factbook can be used by administrators and faculty in developing departmental and institutional plans. The data presented here can also be used to aid departmental and institutional decision-making.

Additional institutional data are available on the Internet at the following address:  
<http://www.mcc.cc.tx.us/docs/mccdept/admin/iep/IRHOME.HTM>

## TABLE OF CONTENTS

	Page
Preface .....	1
 SECTION I: INTRODUCTION	
Mission Statement .....	6
History of McLennan Community College .....	7
Board of Directors and Administration .....	8
Historical Enrollment.....	9
Factsheet.....	12
Texas Public Community Colleges.....	13
 SECTION II: GENERAL INFORMATION	
Overview of Organizational Structure (Chart) .....	16
President's Division (Chart) .....	17
Instructional Support Division (Chart) .....	18
Arts and Sciences (Chart) .....	19
Technical Education (Chart) .....	20
Student Services (Chart) .....	21
Businesses Services (Chart) .....	22
Degree/Certificate Programs .....	23
Library Usage Statistics .....	24
Academic Success Center Usage Statistics .....	25
Career Development Usage Statistics .....	26
 SECTION III: SERVICE AREA	
Location and Climate .....	28
Population demographics (Age, Gender, Ethnicity) .....	28
Income Statistics .....	29
Major Employers .....	30
Unemployment Rate and Wages .....	31
Cities and School Districts .....	34

#### SECTION IV: STUDENT PROFILE

Gender and Ethnicity .....	36
Age and Course Load .....	37
Enrollment by Division .....	38
Enrollment by County .....	38
Contact Hours .....	39
Employment Status .....	39

#### SECTION V: STUDENT ENROLLMENT

Enrollment Growth (Past 5 years) .....	41
Full-time and Part-time Enrollment (Fall semesters) .....	42
Full-time and Part-time Enrollment (Spring semesters) .....	43
Enrollment by Ethnicity (Fall semesters) .....	44
Enrollment by Ethnicity (Spring semesters) .....	45
Enrollment by Gender (Fall semesters) .....	46
Enrollment by Gender (Spring semesters) .....	47
Enrollment by Age (Fall semesters) .....	48
Enrollment by Age (Spring semesters) .....	49
Enrollment by Division .....	50
Enrollment by County (Fall semesters) .....	51
Enrollment by County (Spring semesters) .....	52
Contact Hours (Fall semesters) .....	53
Contact Hours (Spring semesters) .....	54
Enrollment by High School .....	55
Average Course Load .....	56

#### SECTION VI: STUDENT PERFORMANCE

Grade Distribution .....	58
Grade Distribution by Division .....	59
Grade Distribution by Department .....	61
Duplicated Enrollment .....	63
Declared Majors .....	65
Percentage of Students who are Academically Disadvantaged .....	67
Percentage of Students who are Economically Disadvantaged .....	68
Disabled and Displaced Homemakers .....	69
Single Parents and Limited English Proficiency .....	70
Remedial Needs .....	71
Graduates by Degree .....	72
Graduates by Ethnicity and Gender .....	73
Graduates by Major .....	74

## SECTION VII: FACULTY DATA

Full-time and Part-time Faculty Headcount .....	76
Full-time and Part-time Faculty Headcount by Gender .....	76
Full-time and Part-time Faculty Headcount by Age .....	76
Full-time and Part-time Faculty Headcount by Ethnicity .....	77
Full-time and Part-time Faculty Headcount by Highest Degree Earned .....	78

## SECTION VIII: ADMINISTRATION AND CLASSIFIED STAFF

Administration and Classified Staff by Position .....	80
Administration and Classified Staff by Gender .....	80
Administration and Classified Staff by Ethnicity .....	80

## SECTION IX: FINANCIAL SERVICES

Income by Source .....	83
Expenditures by Source .....	85

## SECTION X: COMPARATIVE DATA

Enrollment and Semester Hours .....	88
Faculty Headcount and Contact Hours .....	89
Financial Ratios .....	90
Legislative Appropriations .....	93
Websites .....	95

# SECTION I

## INTRODUCTION

Mission Statement .....	6
History of McLennan Community College .....	7
Board of Directors and Administration .....	8
Historical Enrollment.....	9
Factsheet.....	12
Texas Public Community Colleges.....	13

## Mission Statement

McLennan Community College affirms its mission to provide a comprehensive range of educational services and programs for students and a dynamic, multicultural community. The college is committed to excellence in all of its educational programs. McLennan Community College endorses the concept of open admissions and provides support services designed to assist students to succeed in their educational goals.

To accomplish its mission, McLennan Community College will periodically assess community needs and provide:

1. Freshman and sophomore courses in arts and sciences that may apply to an associate or a baccalaureate degree;
2. Vocational and technical programs leading to an associate degree or a certificate, which prepare students for employment or job advancement;
3. A program of continuing education that provides courses, activities and services, both on campus and within the community, for personal growth, skill development, and career enhancement;
4. Opportunities for economic growth, cultural enrichment, and the development of good citizenship through courses, activities, and services.



## History

Founded by McLennan County voters in 1965, MCC opened its doors to 855 students the next fall in a temporary campus on the former James Connally Air Force Base. Within two years of its inception, MCC received accreditation from the Southern Association of Colleges and Schools and later moved to its permanent 200-acre campus adjacent to Cameron Park in north Waco. Today, MCC offers a variety of educational programs in the technical fields and in the arts and sciences. MCC had its highest credit enrollment of 6,004 students during the Fall 1992 semester. Enrollment has remained relatively stable since 1992 with 5,300 or more full-time and part-time students attending each semester.

MCC had its SACS accreditation reaffirmed in 1992. MCC's next accreditation review will be in 2002. In addition, MCC is scheduled for a Texas Higher Education Coordinating Board (THECB) Institutional Effectiveness visit in May 1999.

## McLennan Community College Board of Trustees

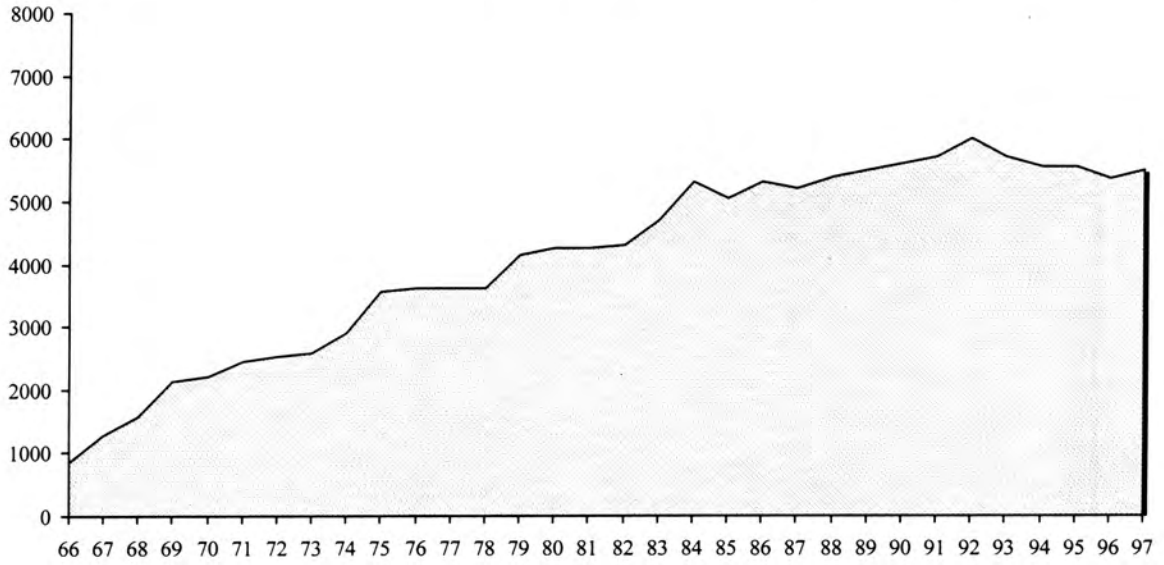
<b>Board Members</b>	<b>Date of Terms</b>	<b>Hometown</b>
Donald L. Hay, Chairman	2002	Waco, Texas
Bob Sheehy, Jr., Vice Chairman	2000	Waco, Texas
Pauline Chavez, Secretary	2006	Waco, Texas
Randy Cox	2002	Waco, Texas
Linda Hilliard	2000	Hewitt, Texas
James Lewis - DISTRICT 1 (MCC)	2006	Waco, Texas
Fredrick Smith	2002	Waco, Texas

## Executive Administration

Dr. Dennis Michaelis	President
Dr. Jay Box	Vice President of Instruction
Dr. Johnette McKown	Vice President of Business Services

# MCC Historical Fall Enrollment 1966 - 97

*Credit Enrollment Only*

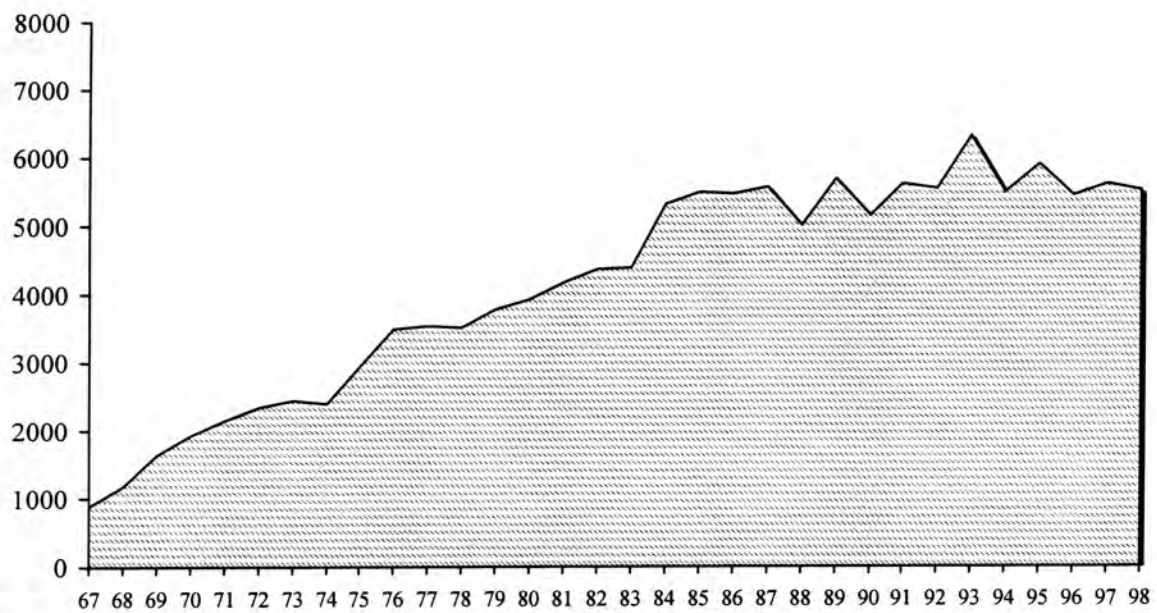


Source: Institutional Effectiveness Database/CBM001

McLennan Community College 1997-98 Factbook

# MCC Historical Spring Enrollment 1967 - 98

Credit Enrollment Only



Source: Institutional Effectiveness Database/CBM001

McLennan Community College 1997-98 Factbook

## McLennan Community College Enrollment History

---

Academic Year	Fall	Spring	Sum I	Sum II	Total
1966-67	855	885	311	186	<b>2,237</b>
1967-68	1,280	1,162	622	375	<b>3,439</b>
1968-69	1,577	1,638	899	539	<b>4,653</b>
1969-70	2,126	1,923	1,052	536	<b>5,637</b>
1970-71	2,211	2,153	1,224	656	<b>6,244</b>
1971-72	2,448	2,331	1,112	565	<b>6,456</b>
1972-73	2,522	2,446	1,206	578	<b>6,752</b>
1973-74	2,584	2,381	1,313	635	<b>6,913</b>
1974-75	2,902	2,918	1,785	866	<b>8,471</b>
1975-76	3,552	3,488	1,904	871	<b>9,815</b>
1976-77	3,608	3,535	1,891	796	<b>9,830</b>
1977-78	3,607	3,524	1,752	764	<b>9,647</b>
1978-79	3,621	3,780	2,030	1,012	<b>10,443</b>
1979-80*	4,140	3,920	2,200	1,153	<b>11,413</b>
1980-81*	4,249	4,180	2,401	1,207	<b>12,037</b>
1981-82*	4,251	4,364	2,552	1,187	<b>12,354</b>
1982-83*	4,302	4,395	2,696	1,192	<b>12,585</b>
1983-84*	4,707	5,322	2,961	1,186	<b>14,176</b>
1984-85*	5,304	5,488	2,264	1,345	<b>14,401</b>
1985-86*	5,053	5,470	3,402	1,374	<b>15,299</b>
1986-87*	5,313	5,550	3,122	1,489	<b>15,474</b>
1987-88*	5,198	4,999	3,384	1,539	<b>15,120</b>
1988-89*	5,389	5,688	3,818	1,881	<b>16,776</b>
1989-90**	5,496	5,158	3,743	1,496	<b>15,893</b>
1990-91**	5,615	5,606	3,424	1,355	<b>16,000</b>
1991-92**	5,704	5,535	4,315	1,461	<b>17,015</b>
1992-93**	6,004	6,311	3,423	1,410	<b>17,148</b>
1993-94*	5,703	5,487	3,686	1,602	<b>16,478</b>
1994-95*	5,547	5,910	2,976	1,272	<b>15,705</b>
1995-96*	5,561	5,910	4,267	1,610	<b>17,348</b>
1996-97*	5,374	5,610	2,995	1,620	<b>15,599</b>
1997-98*	5,493	5,505			

\*Flexible entry (FE) head count enrollment is included in totals.

\*\*Does not include enrollment of Cosmetology. Flexible entry (FE) head count enrollment is included in totals. Auditors are not included.

Source: Institutional Effectiveness Database/CBM001

McLennan Community College 1997-98 Factbook

## MCC Factsheet

MCC was founded in 1965

MCC is governed by a Board of Trustees that includes seven elected members

MCC employs more than 550 full-time and part-time employees

MCC employs approximately 169 full-time faculty members

78% of the full-time faculty have tenure

86% of MCC students reside in McLennan County

Average age of MCC students is 27

28% of the students are older than 30 years of age

5,492 students enrolled in the Fall 1997 semester

5,307 students enrolled in the Spring 1998 semester

Ethnic minorities represent 28% of the student population

65% of the students are female

Total contact hours for Fall 1997 was 1,119,904

47% of students enrolled in 12 or more semester hours

Full-time fall semester enrollment increased from 42% (1993) to 47% (1997)

Minority fall semester enrollment increased from 24% (1993) to 28% (1997)

\*MCC serves an estimated McLennan County population of 205,136

\*33% of the McLennan County population are ethnic minorities

\*The median age of McLennan County residents is 33

\*Average household size is 2.6 residents

\*The median household income is \$30,017

The July 1998 unemployment rate for McLennan County was 4.9%

The course pass rate for Fall 1997 was 69%

The course attrition rate for Fall 1997 was 20%

State funds represent 43% of total revenue

Tuition and fees represent 16% of total revenue

Local taxes represent 16% of total revenue

Resident instruction represents 46% of total expenditures

MCC ranks first of fifteen peer institutions in the percent of funds allocated to instruction

MCC ranks among the bottom of fifteen peer institutions in the percent of funds allocated to maintenance, institutional support, and academic support

*\* Data based on 1998 estimates from Claritas Inc.*

## Texas Public Community Colleges

Institution	Administrative Officer	Telephone	1997 Headcount
Alamo Community College	Robert Ramsay, Chancellor	210 208-8020	(38,332)
Northwest Vista College	Jacqueline Claunch, President	210-208-8001	1,479
Palo Alto College	Enrique Solis, President	210-921-5260	7,307
San Antonio College	Vern Loland, President	210-733-2000	21,287
St. Philip's College	Charles A. Taylor, President	210-531-3591	8,259
Alvin Community College	Rodney Allbright, President	281 331-8111	3,719
Amarillo College	Luther Bud Joyner, President	806 371-5000	7,265
Angelina College	Larry Phillips, President	409 639-1301	3,992
Austin Community College	Richard Fonte, President	512 223-7598	25,796
Blinn College	Donald E. Voelter, President	409 830-4000	10,185
Brazosport College	Millicent Valek, President	409 266-3000	3,560
Central Texas College District	James Anderson, Chancellor	254 526-7161	6,040
Cisco Junior College	Roger Schustereit, President	254 442-2567	2,565
Clarendon College	Ray Hawkins, Interim President	806 874-3571	891
Coastal Bend College	Norman Wallace, President	512 358-3130	2,755
College of the Mainland	Larry Stanley, President	409 938-1211	3,596
Collin County CCD	John Anthony, President	972 548-6790	11,047
Dallas County CCD	J. William Wenrich, Chancellor	214 860-2125	45,135
Brookhaven College	Jack Stone, Interim President	972 860-4700	7,184
Cedar Valley College	Carol Spencer, President	972 860-8200	2,604
Eastfield College	Roger A. Pool, President	972 860-7001	7,810
El Centro College	Wright Lassiter, President	214 860-2010	4,683
Mountain View College	Monique Amerman, President	214 860-8700	5,242
North Lake College	David England, President	972-273-3010	5,603
Richland College	Stephen Mittelstet, President	972-238-6200	12,009
Del Mar College	Terry Dicianna, President	512 886-1203	10,399
El Paso CCD	Adriana D. Barrera, President	915 831-2000	19,731
Frank Phillips College	William Griffin, Jr., President	806 274-5311	1,101
Galveston College	C.B. Rathburn, President	409 763-6551	2,190
Grayson County College	Alan Scheibmeir, President	903 465-6030	3,131
Hill College	William Auvenshine, President	254 582-2555	2,681
Houston Community College System	Ruth Burgos-Sasscer, Chancellor	713 718-5000	31,926
Central College	Jack Daniels, President	713 630-1841	
Northeast College	Margaret Ford, President	713 718-5721	
Northwest College	Zach Hodges, President	713 718-5721	
Southeast College	Sylvia Ramos, President	713 718-7071	
Southwest College	Sue Cox, President	281 661-4589	
Howard County Junior College District	Cheryl T. Sparks, President	915 267-6311	(2,056)
Howard College	Cheryl T. Sparks	915 264-5000	1,960
Southwest Collegiate Institute for the Deaf	Ron Brasel, Executive Director/Dean	915-264-3700	96
Kilgore College	William M. Holda, President	903 984-8531	4,106
Laredo Community College	Ramon dovalina, President	956 722-0521	7,421
Lee College	Jackson Sasser, President	281 427-5611	6,002
McLennan Community College	Dennis Michaelis, President	254 299-8000	5,467
Midland College	David Daniel, President	915 685-4500	4,228
Navarro College	Richard Sanchez, President	903 874-6501	3,362
North Central Texas College District	Ronnie Glasscock, President	940 668-7731	4,231
Northeast Texas Community College	Charles Florio, President	903-572-1911	2,027
North Harris Montgomery Community College District	John Pickelman, Chancellor	281-260-3500	(22,185)
Kingwood College	Stephen Head, President	281 359-1600	3,870
Montgomery College	William D. Law, President	409 273-7258	4,463
North Harris College	Sanford Shugart, President	281-443-5400	9,628
Tomball College	Diane Troyer, President	281-351-3300	4,224

Source: Texas Coordinating Board of Higher Education

## Texas Public Community Colleges Continued

Institution	Administrative Officer	Telephone	1997 Fall Headcount
Odessa College	Vance Gipson, President	915-335-6400	5,041
Panola College	William F. Edmonson, President	903-693-2022	1,717
Paris Junior College	Bobby Walters, President	903-785-7661	2,907
Ranger College	Joe Mills, President	254-647-3234	832
San Jacinto College District	James Horton, Chancellor	050-998-6100	(18,263)
Central Campus	Monte Blue, President	281-476-1501	9,316
North Campus	Charles Grant, President	281-458-4050	3,930
South Campus	Adena Williams Loston, President	281-484-1900	5,017
South Plains College	Gary McDaniel, President	806-894-9611	6,217
South Texas Community College	Shirley Reed, President	956-618-8361	6,857
Southwest Texas Junior College	Billy Word, President	856-278-4401	3,412
Tarrant County Junior College District	Leonardo de la Garza, Chancellor	814-515-7851	(26,692)
Northeast Campus	Larry Darlage, President	817-515-7860	9,398
Northwest Campus	Michael Saenz, President	817-515-2900	4,007
South Campus	Ernest L. Thomas, President	817-515-4861	7,395
Southeast Campus	Judith Carrier, President	817-515-3100	5,892
Temple College	Marc A. Nigliazzo, President	254-298-8282	2,894
Texarkana College	Carl Nelson, President	903-838-4541	3,732
Texas Southmost College	Michael B. Putegant, Exec. Director	956-544-8200	6,826
Trinity Valley Community College	Ron Baugh, President	903-677-8822	4,379
Tyler Junior College	William Crowe, President	903-510-2200	8,156
Vernon Regional Junior College	R. Wade Kirk, President	940-552-6291	1,750
Victoria College	Jimmy Goodson, President	512-573-3291	3,804
Weatherford College	James Boyd, President	817-594-5471	2,579
Western Texas College	Harry Krenek, President	915-573-8511	1,112
Wharton County Junior College	Frank R. Vivelo, President	409-532-4560	4,053

Source: Texas Coordinating Board of Higher Education

McLennan Community College 1997-98 Factbook

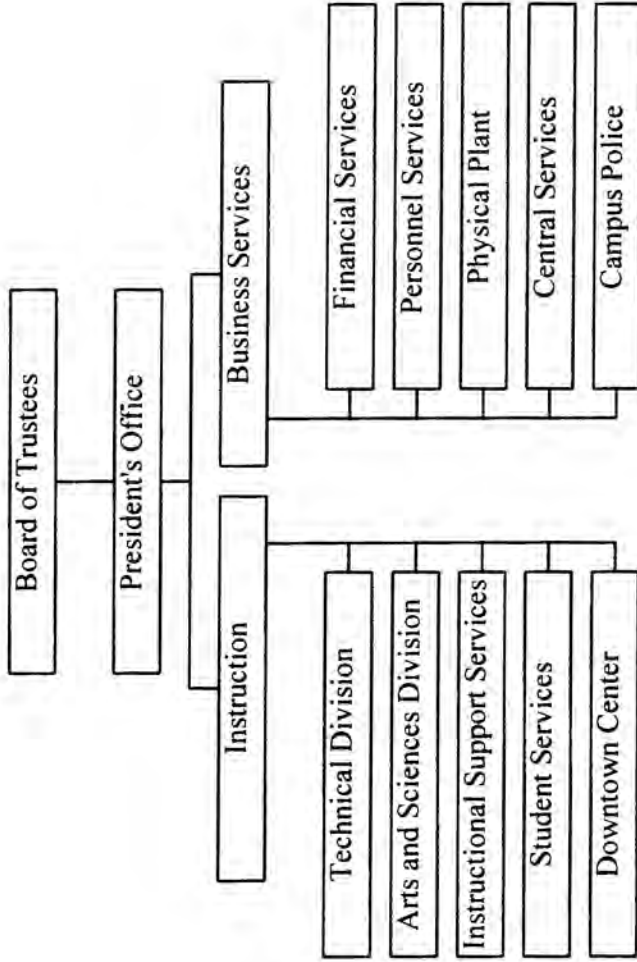


## SECTION II

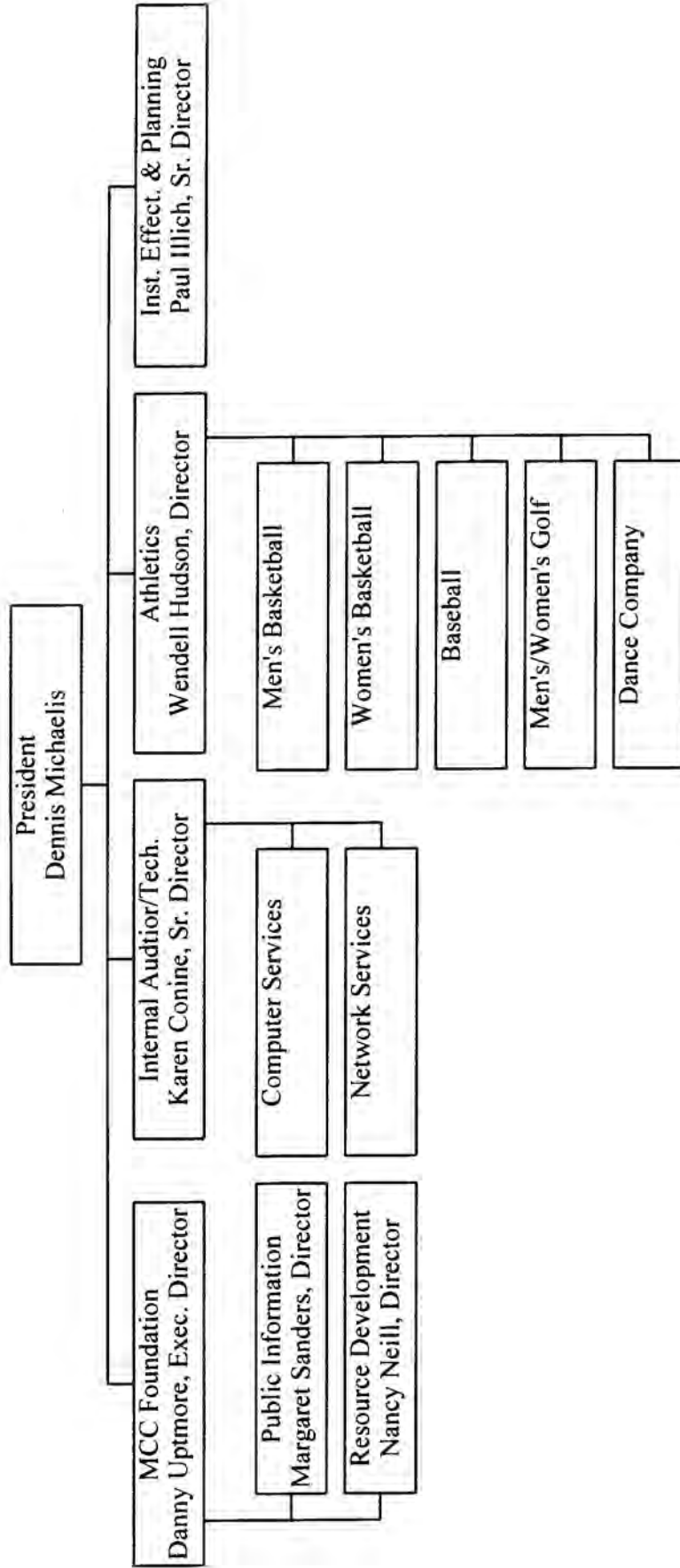
### GENERAL INFORMATION

Overview of Organizational Structure (Chart) .....	16
President's Division (Chart) .....	17
Instructional Support Division (Chart) .....	18
Arts and Sciences (Chart) .....	19
Technical Education (Chart) .....	20
Student Services (Chart) .....	21
Businesses Services (Chart) .....	22
Degree/Certificate Programs .....	23
Library Usage Statistics .....	24
Academic Success Center Usage Statistics .....	25
Career Development Usage Statistics .....	26

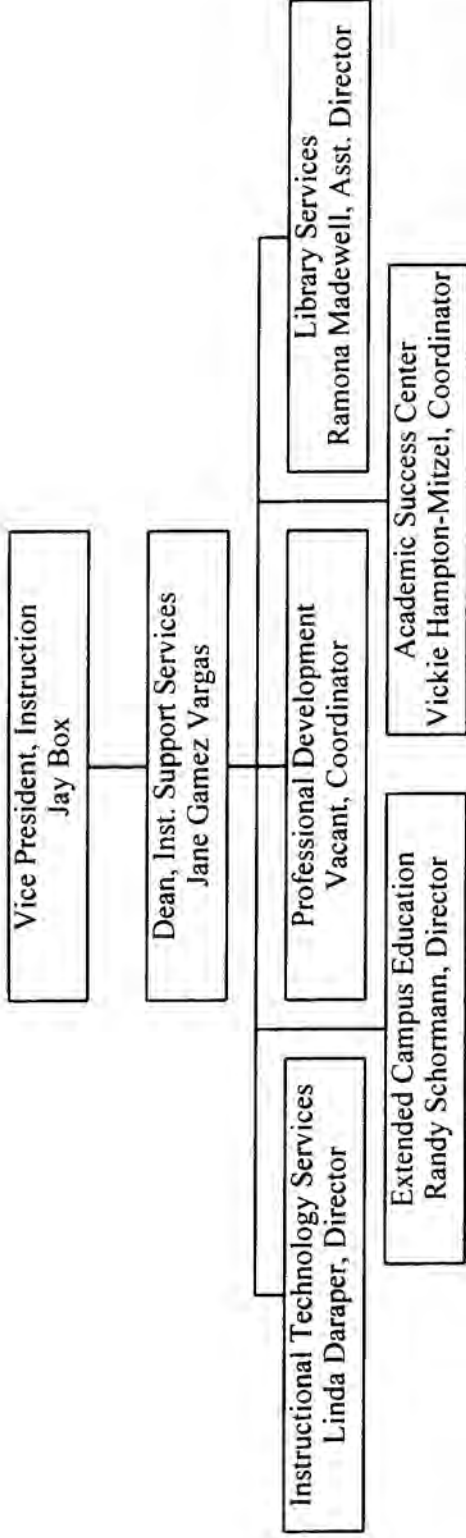
**McLennan Community College  
Organizational Structure (1997 - 98)**

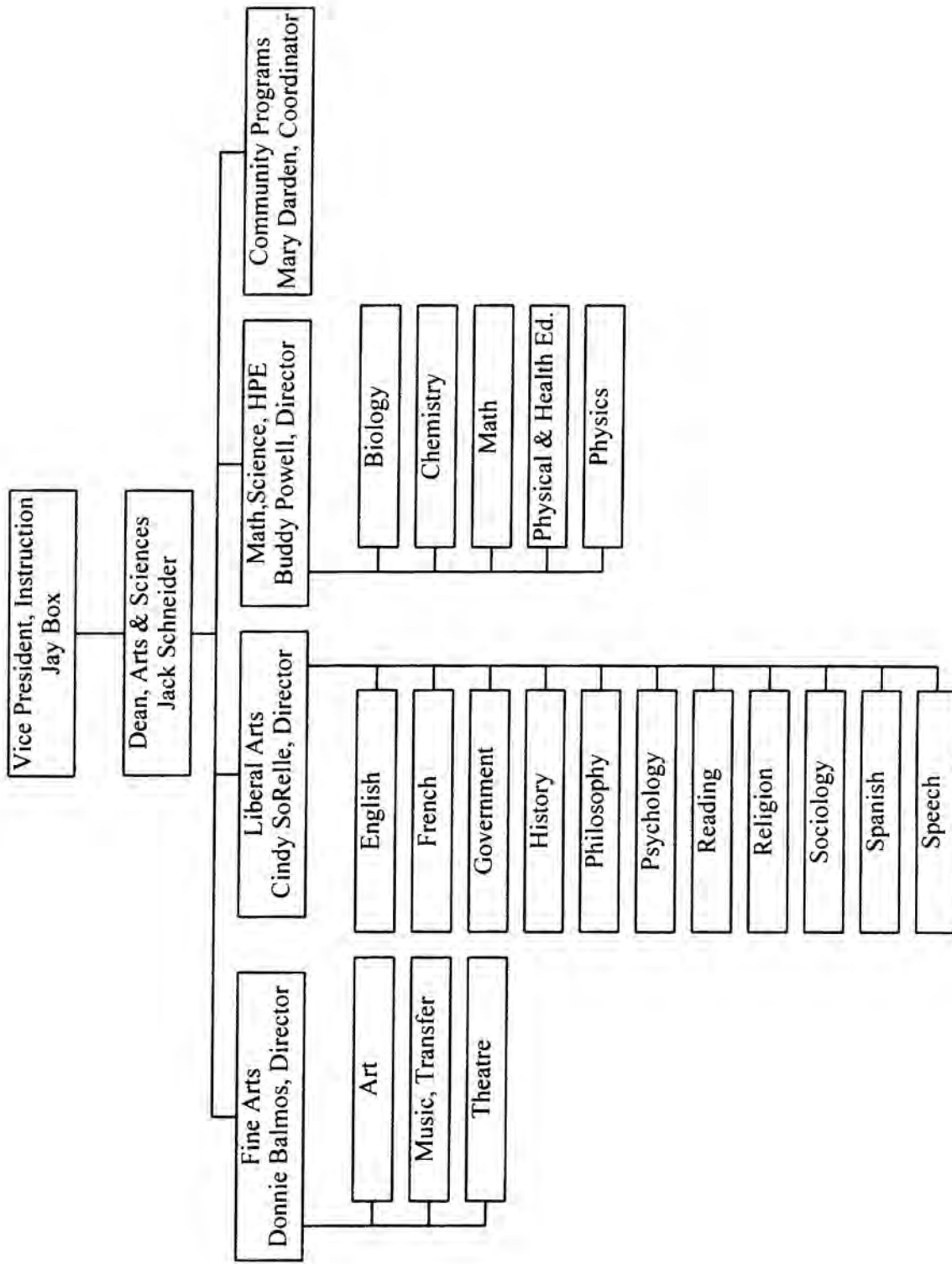


# President's Division

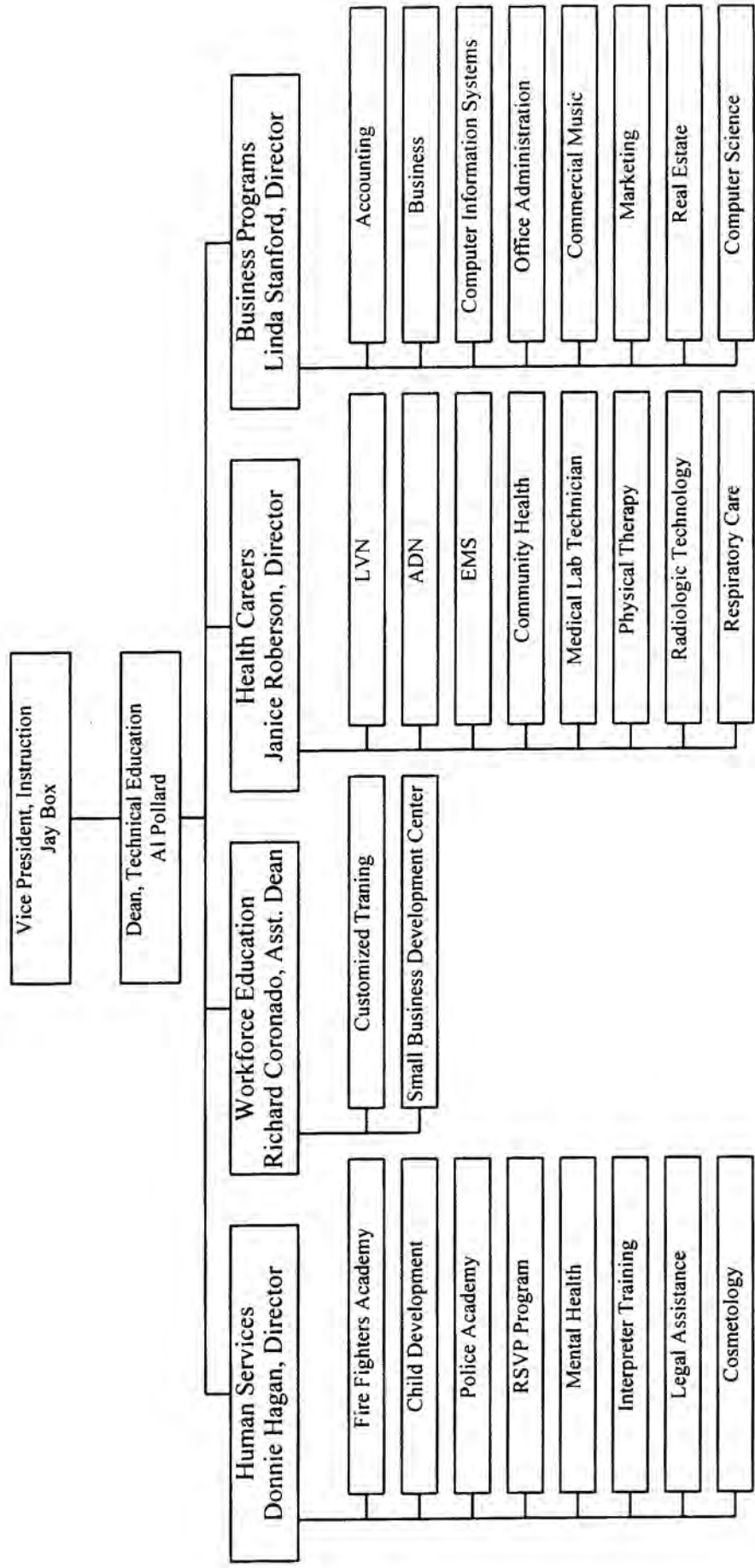


# Instructional Support Services

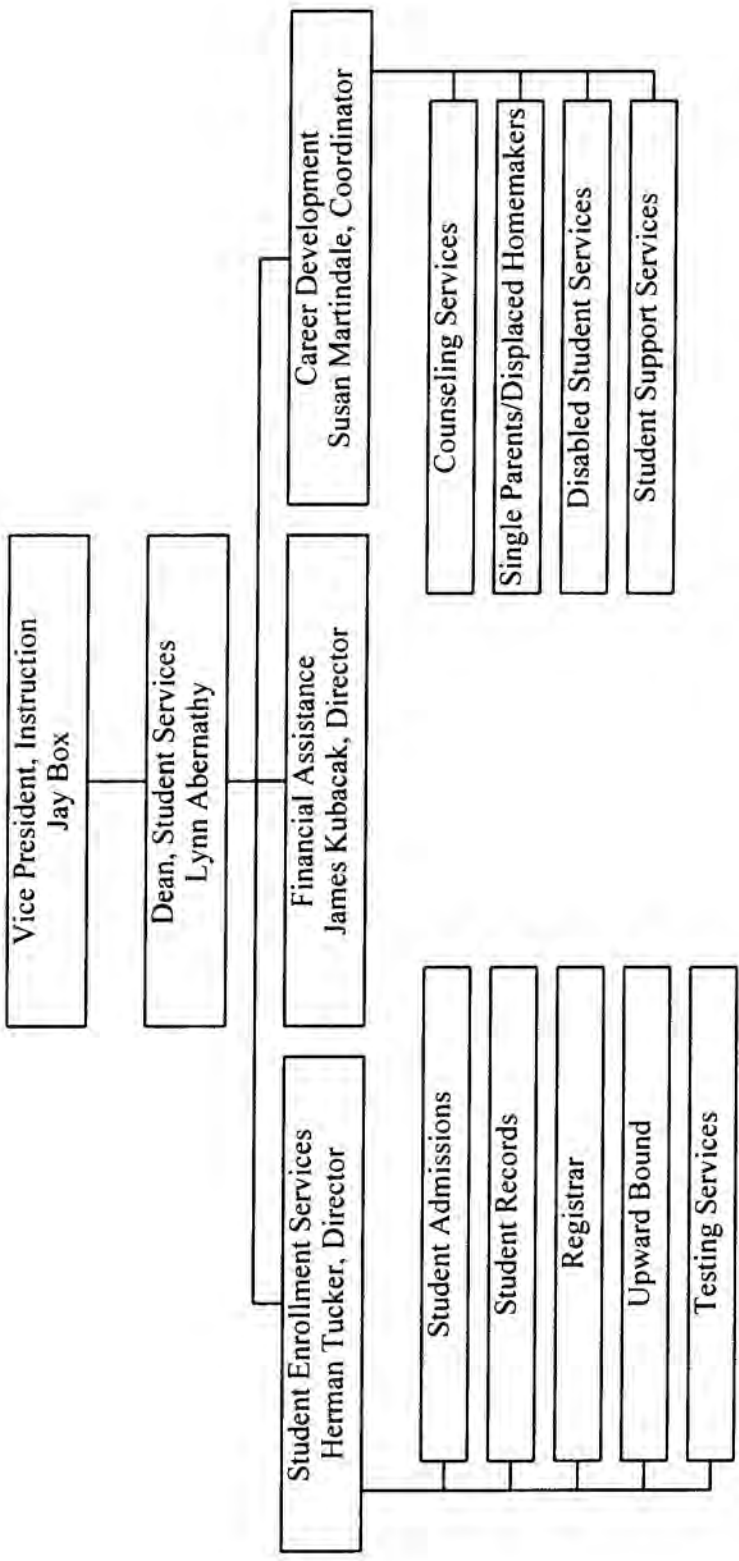




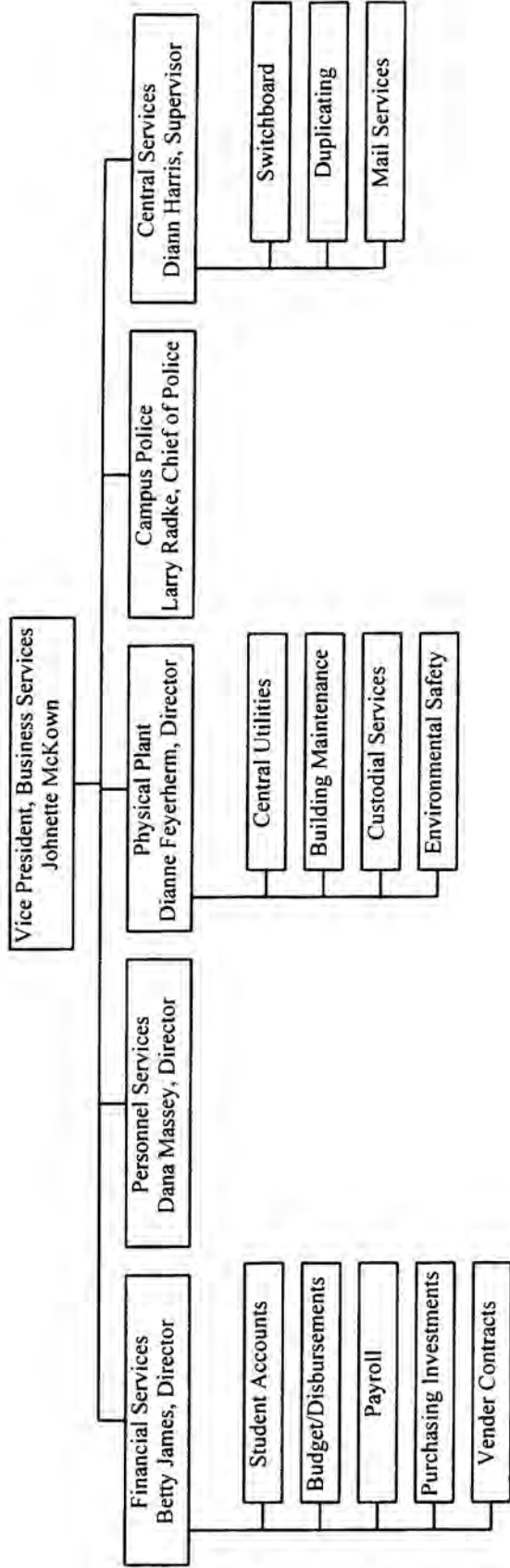
# Technical Education



# Student Services



# Business Services







# Degree and Certificate Programs

## A.A.S. Degree Programs

Each of these technical education programs leads to an Associate in Applied Science degree and can be completed in two years.

### Business Careers

- Accounting/Management
- Business/Management
- Commercial Music/Audio Technology
- Commercial Music/
  - Composition & Arranging
- Commercial Music/Performance
- Commercial Music Management
- Commercial Music/Songwriting
- Computer Information Systems/Programming
- Computer Information Systems/Microcomputer Applications
- Data Base Specialist
- Financial Services/Management
- General Business
- Information Processing
- Legal Secretarial
- Marketing
- Medical Secretarial
- Microcomputer Applications
- Network Administration
- Production and Inventory/Management
- Real Estate/Management

### Health Careers

- Associate Degree Nursing
- Health Information Technology (Medical Records)
- Medical Laboratory Technician
- Physical Therapist Assistant
- Radiologic Technology
- Respiratory Care Technology

### Human Service Careers

- Child Development
- Child Development/Special Persons
- Criminal Justice/Corrections
- Criminal Justice/Law Enforcement
- Interpreter Training
- Legal Assistant
- Mental Health
- Mental Health/Gerontology
- Mental Health/Mental Retardation
- Mental Health/Substance Abuse
- Mental Health/Youth Counseling

## Certificate Programs

Each of these technical education programs leads to a certificate of completion and can be completed in one year.

### Business Careers

- Accounting/Management
- Business/Management
- Commercial Music Management
- Commercial Music/Performance
- Commercial Music/Songwriting
- Computer Information Systems/Microcomputer Applications
- Computer Information Systems/Operations
- Computer Information Systems/Programming
- Financial Services/Management
- Information Processing
- Medical Unit Secretarial
- Microcomputer Applications
- Network Administration
- Production and Inventory/Management
- Real Estate/Management
- Secretarial Training

### Health Careers

- Paramedicine
- Phlebotomy
- Medical Transcription
- Respiratory Care Technology
- Vocational Nursing

### Human Service Careers

- Heart of Texas Poplince Academy
- Building and Construction Trades
- Child Development
- Child Development/Administration
- Child Development-CDA Option III
- Child Development/Special Persons
- Cosmetology
- Cosmetology Instructor
- Criminal Justice/Corrections
- Criminal Justice/Law Enforcement
- Fire Protection Technology
- Mental Health/Gerontology
- Mental Health/Mental Health Aide
- Mental Health/Mental Retardation
- Mental Health/Substance Abuse
- Mental Health/TCADA-Counseling Intern Education Preparation
- Mental Health/Youth Counseling
- Studies in Deafness

## Transfer Programs

An Associate in Arts degree may be earned in any program in which there is an upper-level program at a senior institution. The first two years of course work are taken at MCC and transferred.

- Art
- Business (General, Finance, Marketing, etc.)
- Computer Science
- Criminal Justice
- Education (Elementary, Secondary)
- General Studies
- Journalism
- Music
- Nursing (BSN)
- Pharmacy
- Physical Education
- Pre-Dental
- Pre-Engineering
- Pre-Law
- Pre-Medical
- Psychology
- Religion
- Social Work
- Sociology
- Speech Communication
- Theatre

(Many other majors available — listing is for example only)

McLennan Community College does not discriminate on the basis of sex, disability, race, creed or religion, color, age or national origin.

## MCC Library Services

### Usage Statistics for Academic Years 1994-95 - 1996-97

---

	Academic Years		
	94/95	95/96	96/97
<b>Library Collections</b>			
Books, serial backfiles and government documents			
Volumes	92,638	93,310	93,726
Titles	70,468	71,023	71,485
Current serials	387	390	395
Microforms			
Units	110,434	119,926	129,595
Titles	425	426	428
Manuscripts and archives (linear feet)	14	14	14*
Cartographic materials (units)	100	102	90
Graphic materials (units)	626	626	626
Sound recordings			
Units	383	409	429
Titles	90	91	111
Film and video materials			
Units	235	538	810
Titles	110	227	368
Computer files			
Units	23	32	39
Titles	5	8	13
Other library materials	44	47	67

\* asterisked items reported incorrectly to state

#### Library Services

Circulation transactions			
General collection	20,833	19,363	17,588
Reserve collection	6,727	5,396	5,971
In-house use	15,942	63,191	71,119
Document delivery/Interlibrary loan			
Provided to other libraries	13	0	0
Received from other libraries or sources	122	152	119
Information service to groups			
Number of presentations	152	151	164
Number of persons served in presentations	3,447	3,338	3,746
"Typical Week"			
Public service hours	66.25	66.25	66.25
Gate count	2,738	2,550	2,725
Reference transactions	888	827	850

Source: Texas State Library

McLennan Community College 1997-98 Factbook

## MCC Academic Success Center

---

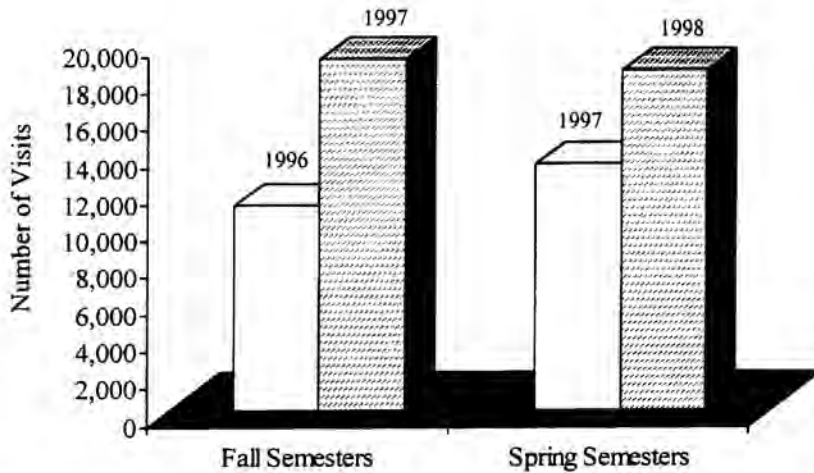
The MCC Academic Success Center offers a variety of student services including Internet access, e-mail, word processing, computer tutorials, study skills information, and TASP remediation.

### 1997 Fall Visits

August	886
September	5,744
October	6,395
November	4,130
December	1,888

### 1998 Spring Visits

January	1,986
February	5,411
March	4,448
April	4,926
May	1,642



The number of visits to the Academic Success Center in the Fall 1997 semester represented an increase of almost 8,000 visits from the 1996 Fall semester.

The number of visits to the Academic Success Center in the Spring 1998 semester represented an increase of more than 5,000 visits from the Spring 1997 semester.

Source: Academic Success Center Database

McLennan Community College 1997-98 Factbook

## MCC Career Development Office

---

The MCC Career Development Office offers a variety of services for working and nonworking students with career-related concerns.

### 1998 Summary Visitor Information

	April	May	June	July	August
Currently Enrolled	379	254	243	374	288
Former Students	27	56	67	105	134
Not Enrolled	55	94	127	145	113
Single Parents/Displaced Homemakers	86	81	74	205	114
Undecided	107	91	106	141	145
2 Year Degree	111	90	122	211	154
Transfer-4 yr Degree	167	146	149	168	154
Certificate Program	47	31	28	55	37
<b>Total</b>	<b>979</b>	<b>843</b>	<b>916</b>	<b>1404</b>	<b>1139</b>

### 1998 Summary of Reasons for Visits

	April	May	June	July	August
How to Start College	21	28	39	42	23
Test Scores Interpreted	8	10	15	12	16
Career Information/Counseling	71	91	91	101	102
Strong Interest Inventory	11	4	6	13	1
Discover/Texas Cares	6	6	11	13	4
Myers Briggs Personality Test	3	4	1	2	2
Single Parents/Displaced Homemaker Services	74	52	50	197	105
Personal Counseling	46	51	39	39	40
Advising	94	107	132	183	224
Transfer Information	96	80	72	73	49
Degree Plans	130	117	124	128	102
Resume Assistance	3	6	4	4	1
Job Information	30	25	42	29	33
<b>Total</b>	<b>593</b>	<b>581</b>	<b>626</b>	<b>836</b>	<b>702</b>

### Demographics of Students who Visit the Career Development Center

*Based on students who visited the center during a 3-month period in the Spring 1998 semester*

Gender	Ethnicity	Age
Male 30.00%	White 64.70%	<18 1.10%
Female 70.00%	African American 18.60%	18-21 44.60%
	Hispanic 12.40%	22-24 16.90%
	Asian or Pacific Islander 2.60%	25-30 15.40%
	Am. Indian or Alaskan Native 0.50%	31-35 7.40%
	Non-Resident Alien 1.20%	36-50 12.60%
		50+ 2.00%

Source: Career Development Database

McLennan Community College 1997-98 Factbook

# SECTION III

## SERVICE AREA

Location and Climate .....	28
Population demographics (Age, Gender, Ethnicity) .....	28
Income Statistics .....	29
Major Employers .....	30
Unemployment Rate and Wages .....	31
Cities and School Districts .....	34

## Waco MSA (McLennan County) Profile

---

### Location and Climate

Waco is located on IH-35 90 miles south of Dallas and 100 miles north of Austin.

Mean Temperature	67.2 F
Annual Rainfall Average	33.33 inches
Sales Tax	8.25%
Cost of Average Home	\$67,900 (3/2)
Average Monthly Apartment Rent	\$590
Housing Costs as % of disposable income	23%

### Colleges and Universities

Baylor University  
 McLennan Community College  
 Texas State Technical College

Source: Waco Chamber of Commerce Website (1998)

	1990	1998 Est.	2003 Proj.
Total Population	189,123	205,136	215,367
White	157,278	168,050	174,762
African American	29,771	34,075	36,945
Asian	1,440	2,202	2,732
American Indian	634	809	928
*Hispanic	23,629	32,043	37,850
Median Age	31	33	34
Male Median Age	29	31	32
Female Median Age	33	35	36
Household Size	3	3	3
Households	70,208	77,309	81,937
Median Household Income	22,764	30,017	33,044

Source: Claritas Inc.

McLennan Community College 1997-98 Factbook

## Service Area Demographics - McLennan County (Continued)

<b>1998 Estimates</b>					
<b>Population by Age by Sex</b>	<b>Male</b>	<b>%</b>	<b>Female</b>	<b>%</b>	<b>Total</b>
Under 5	7,800	7.8	7,588	7.2	15,388
5 - 9	7,762	7.8	7,549	7.2	15,311
10 - 14	7,473	7.5	7,091	6.7	14,564
15 - 17	4,395	4.4	4,180	4	8,575
18 - 20	6,327	6.3	6,398	6.1	12,725
21 - 24	6,570	6.6	6,253	5.9	12,823
25 - 29	7,569	7.6	7,124	6.8	14,693
30 - 34	7,472	7.5	7,159	6.8	14,631
35 - 39	7,423	7.4	7,319	6.9	14,742
40 - 44	6,974	7	7,130	6.8	14,104
45 - 49	6,032	6.1	6,405	6.1	12,437
50 - 54	5,071	5.1	5,334	5.1	10,405
55 - 59	4,023	4	4,475	4.2	8,498
60 - 64	3,531	3.5	4,029	3.8	7,560
65 - 69	3,372	3.4	3,973	3.8	7,345
70 - 74	3,000	3	4,074	3.9	7,074
75 - 79	2,379	2.4	3,631	3.4	6,010
80 - 84	1,446	1.5	2,702	2.6	4,148
85 +	1,074	1.1	3,029	2.9	4,103
<b>Total</b>	<b>99,693</b>	<b>48.6</b>	<b>105,443</b>	<b>51.4</b>	<b>205,136</b>

<b>Household Income by Category</b>	<b>1990</b>	<b>1998</b>	<b>2003</b>
< 5,000	5.10%	3.80%	3.40%
5,000 - 9,999	7.10%	4.70%	4.00%
10,000 - 14,999	9.20%	6.20%	5.50%
15,000 - 19,999	9.60%	7.70%	6.50%
20,000 - 24,999	9.90%	7.50%	7.50%
25,000 - 29,999	9.60%	7.00%	6.50%
30,000 - 34,999	9.50%	7.20%	6.20%
35,000 - 39,999	7.30%	6.20%	6.10%
40,000 - 44,999	6.90%	6.80%	5.10%
45,000 - 49,999	5.40%	6.00%	4.70%
50,000 - 59,999	8.10%	9.70%	10.30%
60,000 - 74,999	5.70%	11.20%	11.20%
75,000 - 99,999	3.90%	8.40%	11.00%
100,000 - 124,999	1.10%	3.30%	5.40%
125,000 - 149,999	0.50%	1.80%	2.10%
150,000 - 249,999	0.70%	1.60%	3.20%
250,000 - 499,999	0.30%	0.60%	1.20%
500,000 or more	0.10%	0.30%	0.60%

Source: Claritas Inc.

McLennan Community College 1997-98 Factbook

## Employer Profile - Waco MSA

---

<b>Employment</b>	<b>Jul-98</b>	<b>Jul-97</b>
Construction	5,000	4,600
Manufacturing	16,400	16,500
TCPU	3,900	3,600
Trade	22,600	21,900
FIRE	6,000	5,700
Services	28,100	27,800
Federal Government	3,200	3,200
State Government	2,200	2,200
Local Government	9,300	9,100

### Industries (Jan. 1997)

<b>Size</b>	<b>Number of Firms</b>	<b>Employment</b>	<b>% of Total Employment</b>
1000+	9	15,766	17.30%
500-999	11	7,445	8.20%
250-499	30	10,031	11.00%
100-249	111	16,441	18.10%
50-99	172	11,918	13.10%
20-49	439	13,171	14.50%
10-19	532	6,841	7.50%
5-9	807	5,156	5.70%
1-4	1,875	3,954	4.30%
0	253	354	0.40%
<b>Total</b>	<b>4239</b>	<b>91077</b>	

### Top Ten Employers

Baylor University  
 E-Systems Inc.  
 Fleetwood Homes of Texas  
 H.E. Butts Grocery Co.  
 Hillcrest Baptist Medical Center  
 Mars Incorporated  
 Plantation Foods  
 PMSI LP  
 Providence Health Center  
 Wal-Mart Associates

Source: Texas Workforce Commission

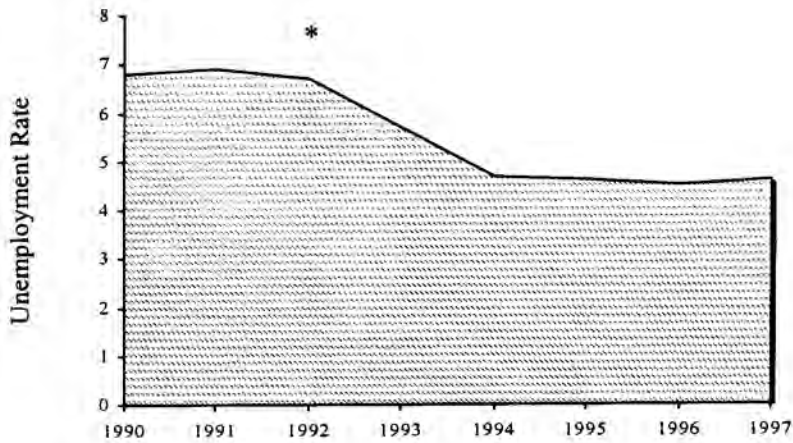
McLennan Community College 1997-98 Factbook



## McLennan County Unemployment Rate (1990-1997)

Year	Labor force	Employed	Unemp.	Unemp. Rate
1990	92,655	86,347	6,308	6.8
1991	93,351	86,904	6,447	6.9
1992	94,536	88,209	6,327	6.7
1993	95,127	89,686	5,441	5.7
1994	97,626	92,997	4,629	4.7
1995	99,449	94,869	4,580	4.6
1996	99,355	94,923	4,432	4.5
1997	100,054	95,425	4,629	4.6

McLennan County



\*  
Largest Fall Enrollment

Source: Texas Workforce Commission

McLennan Community College 1997-98 Factbook

## Waco MSA / McLennan County 1996 Wages

---

<b>Occupational Title</b>	<b>Mean Wage</b>
Accountants & Auditors	\$17.16
Administrative Services Mgrs	\$20.32
Automotive Mechanics	\$10.03
Bakers, Bread & Pastry	\$6.09
Bartenders	\$4.99
Bill,Post,& Calculate Mach Opr	\$8.22
Billing, Cost & Rate Clerks	\$8.15
Bookkpng, Acctng, Audit Clks	\$8.54
Bus, Truck, Diesel Eng Mechs	\$9.01
Butchers & Meatcutters, Retail	\$8.18
Carpenters	\$11.62
Cashiers	\$5.83
Child Care Workers	\$5.15
Clerical Supervisors	\$13.24
Clericl & Admin Suprt Wkrs,NEC	\$9.63
Communication,Transp,Util Mgrs	\$17.70
Computer Operators,	\$10.16
Concrete & Terrazzo Finishers	\$9.56
Cooks, Institution or Cafeteria	\$6.27
Cooks, Short Order	\$5.82
Cost Estimators	\$19.27
Counter & Rental Clerks	\$6.68
Data Entry Keyers,Ex Compos	\$8.05
Dental Assistants	\$8.64
Drafters	\$12.85
Education Administrators	\$23.11
Engineering Technicians, NEC	\$11.89
Engineering, Math, Nat Sci Mgrs	\$25.98
File Clerks	\$6.03
Financial Managers	\$25.96
First Line Superv: Const,Extrac	\$14.54
First Line Superv: Help Laborers	\$12.71
First Line Superv: Mech.&Repair	\$14.58
First Line Superv: Transport	\$12.35
Food Service & Lodging Mgrs	\$14.55
General Mgrs & Top Execs	\$26.55
General Office Clerks	\$8.14
Heating, A/C, Refrig Mechanics	\$10.81
Helpers & Laborers, NEC	\$6.30
Industrial Machinery Mechanics	\$15.62
Industrial Production Managers	\$19.83
Industrial Truck & Tractor Ops	\$8.93
Industry Engineers, Ex Safety	\$38.13
Insurance Adjusters, Examiners	\$19.36
Janitors & Cleaners	\$5.92
Laborers, Landscaping & Groundsk.	\$6.71
Law Clerks	\$9.61
Lawyers	\$32.60
Licensed Practical Nurses	\$10.36

## Waco MSA / McLennan County 1996 Wages (Continued)

---

Machine Operators, NEC	\$6.18
Machinists	\$10.43
Maids & Housekeeping Cleaners	\$5.71
Maintenance Repairers, Gen Util	\$7.94
Managers & Administrators, NEC	\$20.49
Marketing & Sales Supervisors	\$12.36
Marketing/Adv/Public Rel Mgrs	\$19.69
Medicine & Health Service Mgrs	\$20.58
Mgmt Support Workers, NEC	\$9.97
Order Clerks: Materials, Service	\$8.75
Packaging & Filling Mach Ops	\$5.90
Payroll & Timekeeping Clerks	\$10.90
Personnel Clerks, Ex Payroll	\$11.40
Personnel/Training/Lab Rel Mgrs	\$18.78
Pharmacists	\$19.94
Pharmacy Technicians	\$6.70
Plumber, Pipefitter, Steamfitter	\$14.25
Production Inspectors, Graders	\$7.77
Production, Expediting Clerks	\$9.31
Prof, Paraprof, Techns, NEC	\$14.95
Purchas Agts, Ex Who/Ret/Farm	\$14.90
Purchasing Managers	\$19.03
Reception & Information Clks	\$8.07
Registered Nurses	\$14.83
Sales & Related Workrs	\$8.27
Salespersons, Parts	\$10.29
Salespersons, Retail	\$7.22
Secretaries, Ex Legal or Med	\$8.75
Service Workers, NEC	\$5.73
Stock Clerks: Stockroom/Wareh	\$10.05
Switchboard Operators	\$7.59
Traffic, Shipping & Rec Clerks	\$10.24
Truck Drivers, Heavy	\$13.38
Truck Drivers, Light	\$9.14
Typists, Inc Word Processing	\$8.02
Welders & Cutters	\$9.02

Source: Texas Workforce Commission

## McLennan County (Cities and School Districts)

---

<b>Incorporated Cities</b>	<b>Pop.</b>
Bellmead	8,900
Beverly Hills	2,004
Bruceville-Eddy	1,075
Crawford	750
Gholson	692
Golinda	347
Hallsburg	500
Hewitt	10,500
Lacy-Lakeview	3,716
Leroy	292
Lorena	1,500
Mart	2,004
McGregor	5,000
Moody	1,329
Northcrest	1,920
Riesel	1,000
Robinson	7,111
Ross	200
Waco	104,574
West	2,500
Woodway	8,695

### **School Districts**

Axtell ISD  
Bosqueville ISD  
Bruceville-Eddy ISD  
China Spring ISD  
Connally ISD  
Crawford ISD  
Gholson ISD  
Hallsburg ISD  
LaVega ISD  
Lorena ISD  
Mart ISD  
McGregor ISD  
Midway ISD  
Oglesby ISD  
Riesel ISD  
Robinson ISD  
Valley Mills ISD  
Waco ISD  
West ISD

Source: 1996-97 Texas Almanac

McLennan Community College 1997-98 Factbook

# SECTION IV

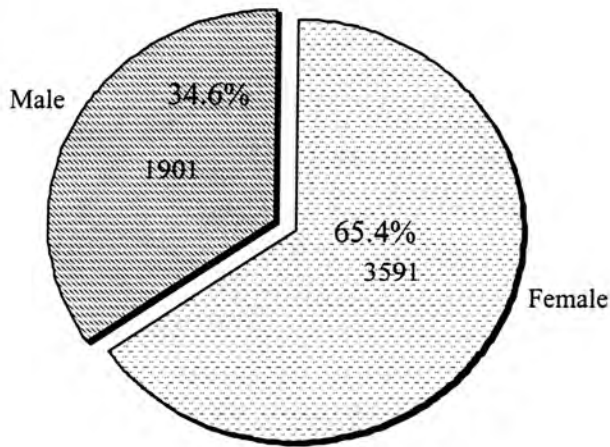
## STUDENT PROFILE

Gender and Ethnicity .....	36
Age and Course Load .....	37
Enrollment by Division .....	38
Enrollment by County .....	38
Contact Hours .....	39
Employment Status .....	39

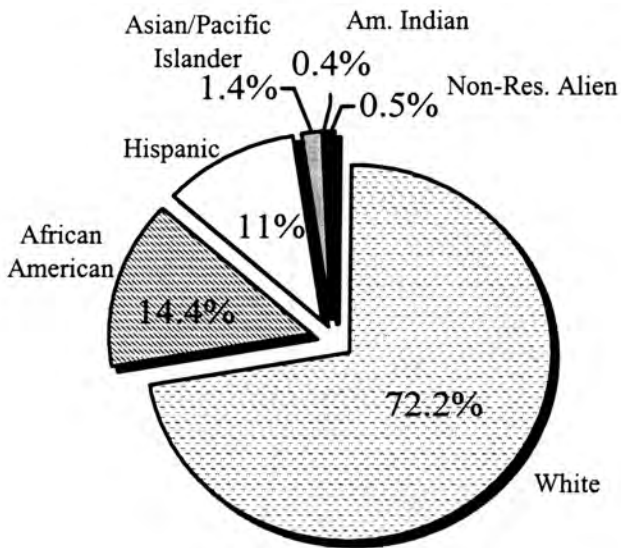
## MCC Student Profile - Fall 1997

---

### Gender



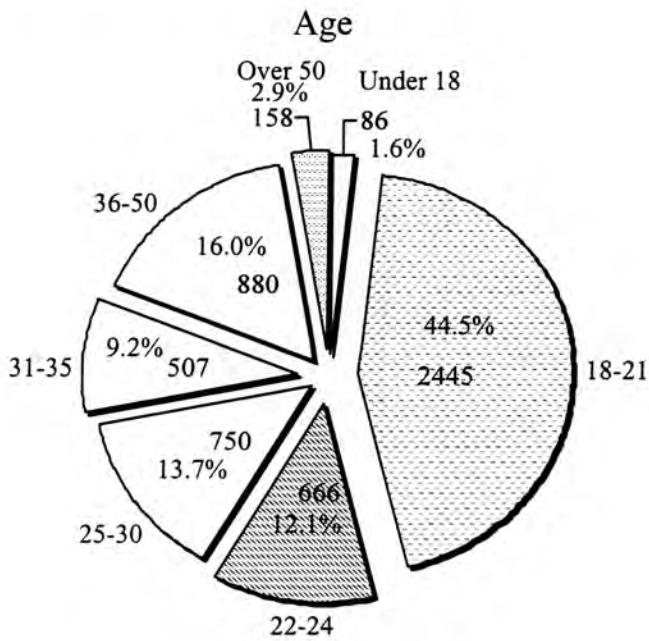
### Ethnicity



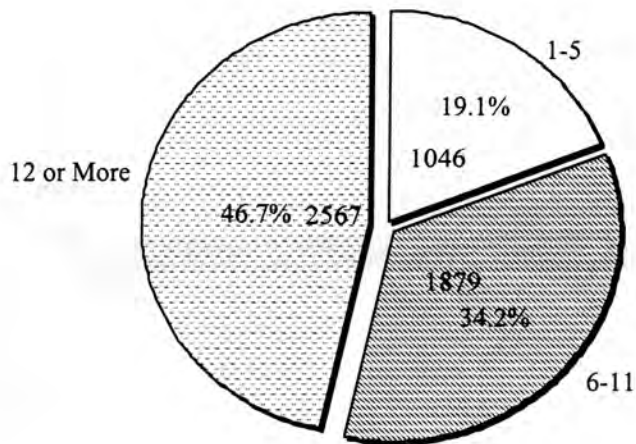
Source: Institutional Effectiveness Database/CBM001

McLennan Community College 1997-98 Factbook

MCC Student Profile - Fall 1997 (Continued)



Course Load (Semester Hours)

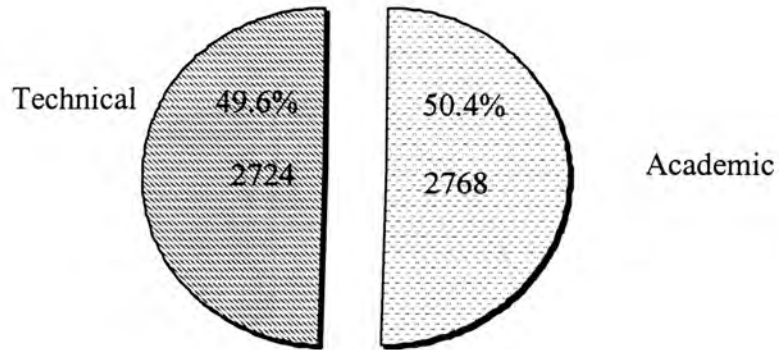


Source: Institutional Effectiveness Database/CBM001

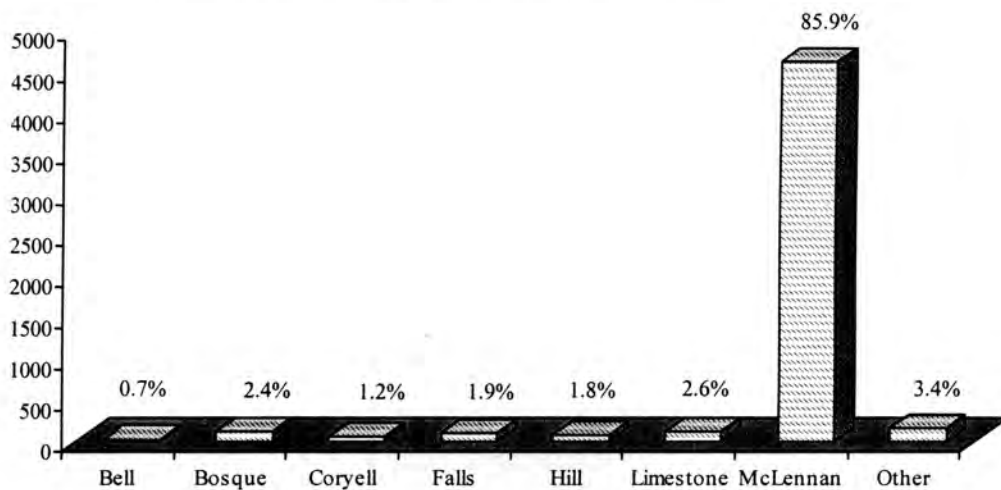
McLennan Community College 1997-98 Factbook

## MCC Student Profile - Fall 1997 (Continued)

### Enrollment by Division - Fall 1997



### Enrollment by County - Fall 1997



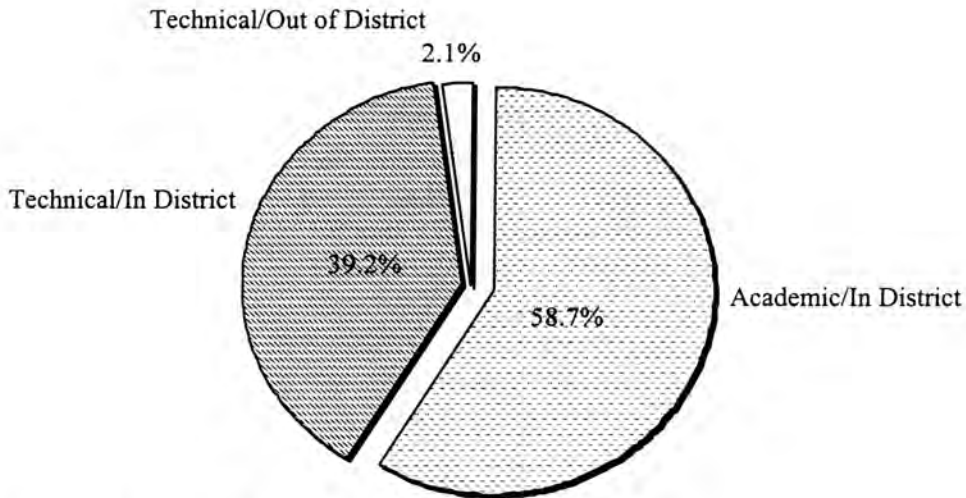
Source: Institutional Effectiveness Database/CBM001

McLennan Community College 1997-98 Factbook



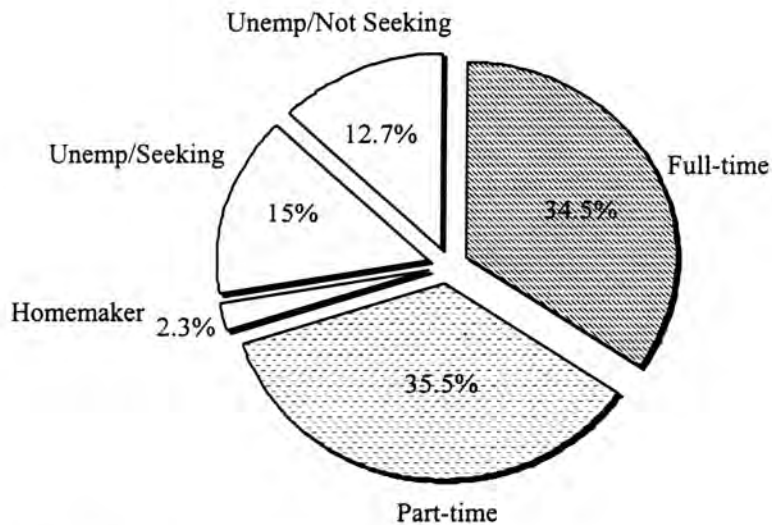
## MCC Student Profile - Fall 1997 (Continued)

### Enrollment by Contact Hours - Fall 1997



Total contact hours - 1,119,904

### Enrollment by Employment Status - Fall 1997



Source: Institutional Effectiveness Database/CBM001

McLennan Community College 1997-98 Factbook

# SECTION V

## ENROLLMENT TRENDS

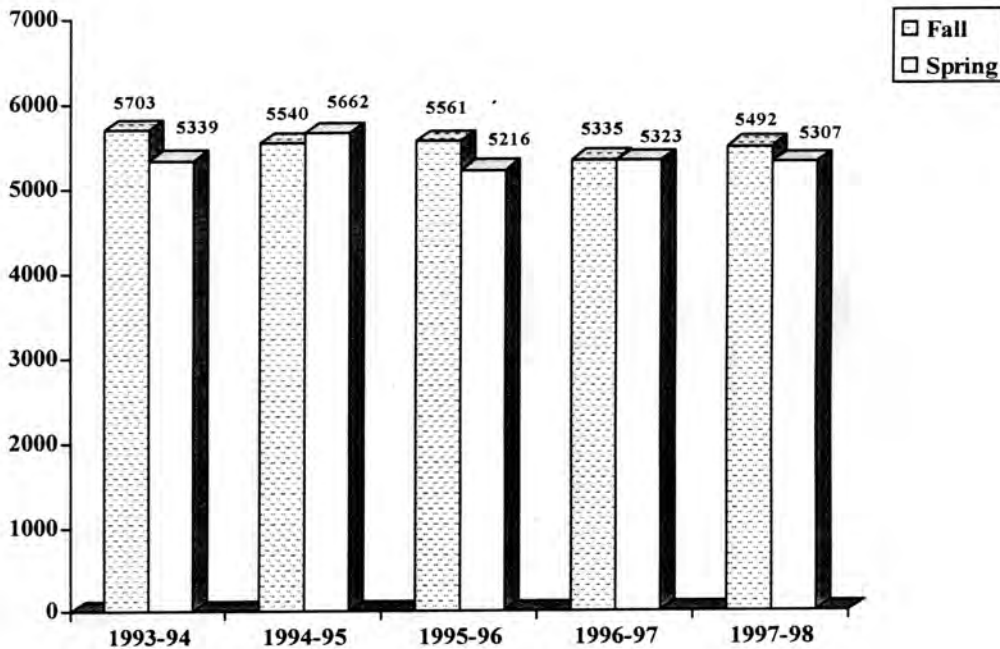
Enrollment Growth (Past 5 years) .....	41
Full-time and Part-time Enrollment (Fall semesters) .....	42
Full-time and Part-time Enrollment (Spring semesters) .....	43
Enrollment by Ethnicity (Fall semesters) .....	44
Enrollment by Ethnicity (Spring semesters) .....	45
Enrollment by Gender (Fall semesters) .....	46
Enrollment by Gender (Spring semesters) .....	47
Enrollment by Age (Fall semesters) .....	48
Enrollment by Age (Spring semesters) .....	49
Enrollment by Division .....	50
Enrollment by County (Fall semesters) .....	51
Enrollment by County (Spring semesters) .....	52
Contact Hours (Fall semesters) .....	53
Contact Hours (Spring semesters) .....	54
Enrollment by High School .....	55
Average Course Load .....	56

## MCC Fall and Spring Enrollment Growth

---

Year	Fall	% of change	Spring	% of change
1993-94	5,703		5,339	
1994-95	5,540	-2.86%	5,662	6.05%
1995-96	5,561	0.38%	5,216	-7.88%
1996-97	5,335	-4.06%	5,323	2.05%
1997-98	5,492	2.94%	5,307	-0.30%
<b>5 year % change:</b>	<b>-3.70%</b>		<b>-0.60%</b>	
<b>1 year % change:</b>	<b>2.94%</b>		<b>-0.30%</b>	

**Enrollment Growth by Semester**  
Fall and Spring --1993-94



Source: Institutional Effectiveness Database/CBM001

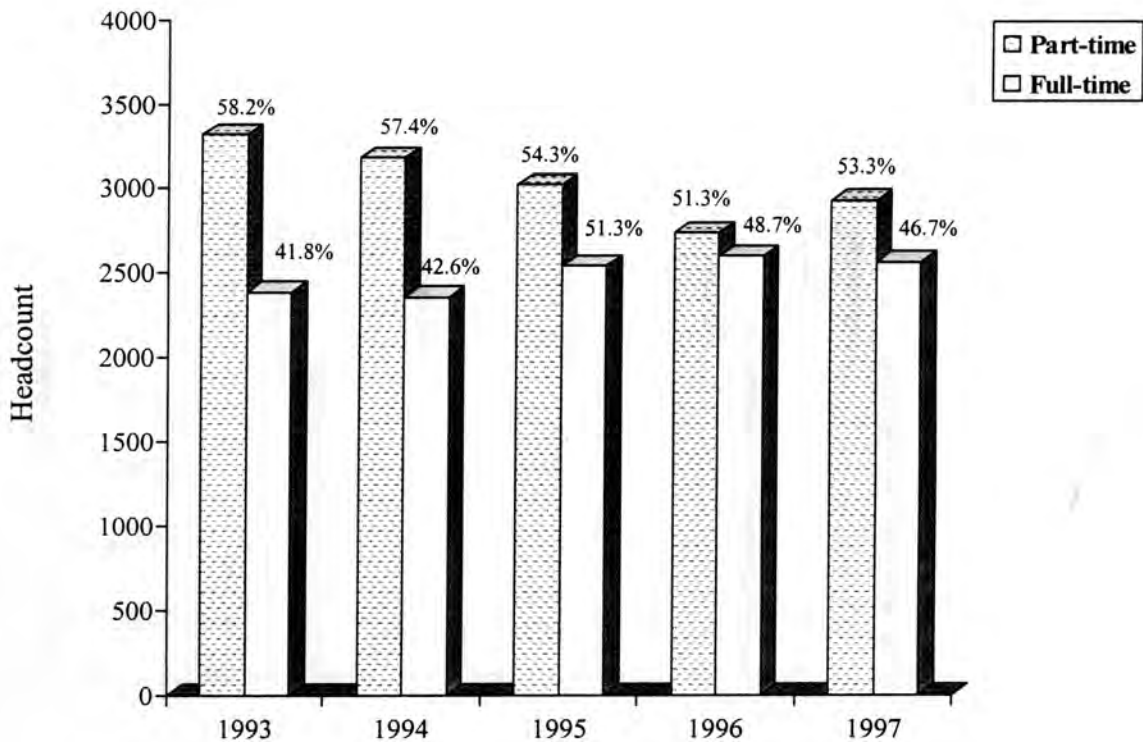
McLennan Community College 1997-98 Factbook

## MCC Full-time and Part-time Fall Enrollment Growth

Year	Total Enrollment	1-5	6-11	12 or More			
1993	5703	1320	23.15%	1997	35.02%	2386	41.84%
1994	5540	1228	22.17%	1952	35.23%	2360	42.60%
1995	5561	1197	21.52%	1823	32.78%	2541	45.69%
1996	5335	1041	19.51%	1695	31.77%	2599	48.72%
1997	5492	1046	19.05%	1879	34.21%	2567	46.74%

<b>5 yr % change:</b>	-20.76%	-5.91%	7.59%
<b>1 yr % change:</b>	-2.39%	7.69%	-4.05%

**Enrollment by Full-time and Part-time status  
Fall Semesters --1993-97**



Source: Institutional Effectiveness Database/CBM001

McLennan Community College 1997-98 Factbook

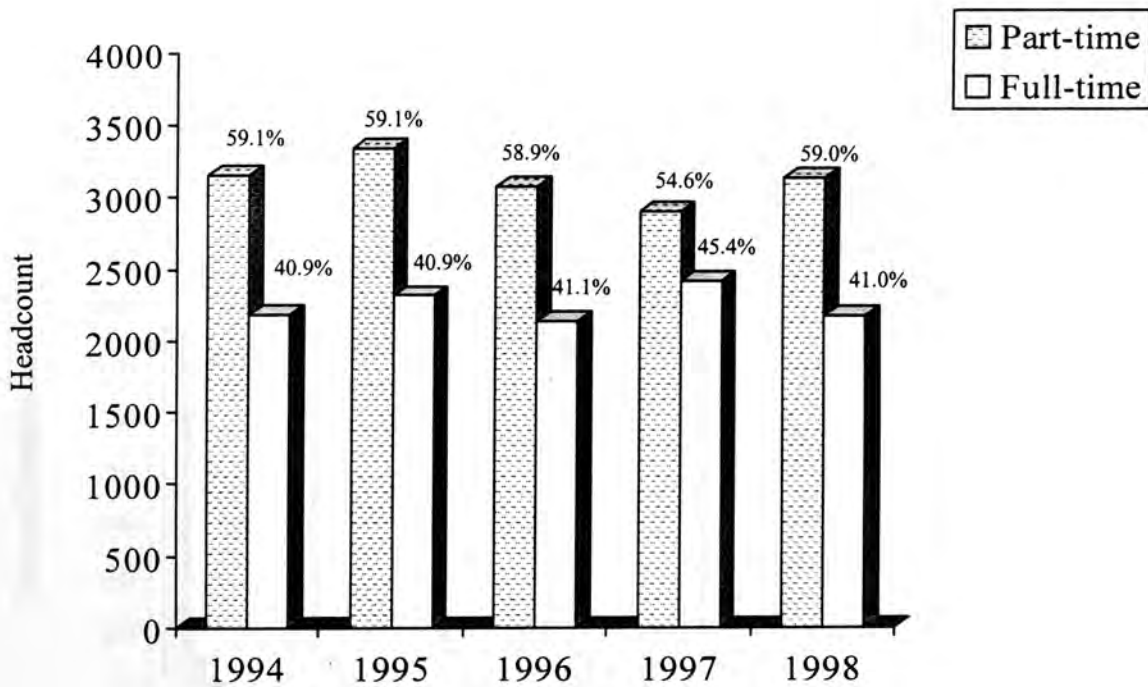
## MCC Full-time and Part-time Spring Enrollment Growth

---

Year	Total Enrollment	1-5		6-11		12 or More	
1994	5339	1280	23.97%	1878	35.18%	2181	40.85%
1995	5662	1379	24.36%	1965	34.71%	2318	40.94%
1996	5216	1207	23.14%	1866	35.77%	2143	41.09%
1997	5323	1151	21.62%	1755	32.97%	2417	45.41%
1998	5307	1171	22.07%	1962	36.97%	2174	40.96%

5 yr % change:	-8.52%	4.47%	-0.32%
1 yr % change:	2.04%	12.13%	-9.78%

Enrollment by Full-time and Part-time status  
Spring Semesters --1994-98



Source: Institutional Effectiveness Database/CBM001

McLennan Community College 1997-98 Factbook

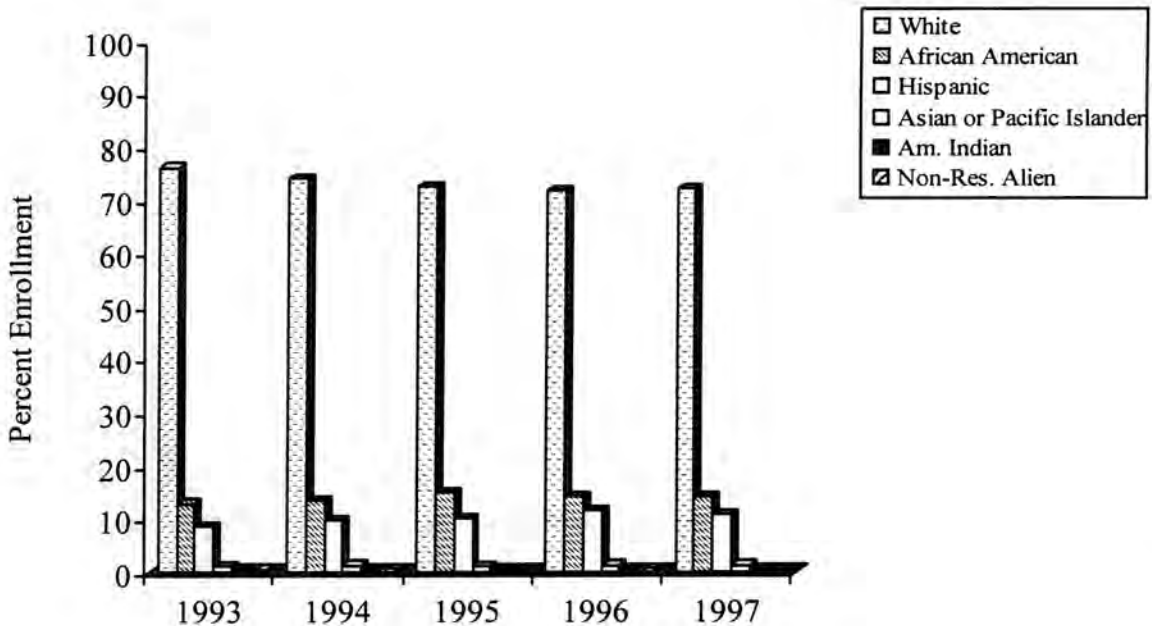
## MCC Enrollment Growth by Ethnicity -- Fall 1993-97

Year	Total Enrollment	White	African American	Hispanic	Asian or Pacific Islander	Am. Indian	Res. Alien
1993	5703	4,337	743	501	70	19	33
1994	5540	4,103	754	539	75	29	40
1995	5561	4,029	837	567	68	30	30
1996	5335	3,824	759	617	72	26	37
1997	5492	3,965	793	604	79	23	28
<b>5 yr % change:</b>		-8.58%	6.73%	20.56%	12.86%	21.05%	-15.15%
<b>1 yr % change:</b>		3.69%	4.48%	-2.11%	9.72%	-11.54%	-24.32%

### Percent

Year	Total Enrollment	White	African American	Hispanic	Asian or Pacific Islander	Am. Indian	Non-Res. Alien
1993	5703	76.05%	13.03%	8.78%	1.23%	0.33%	0.58%
1994	5540	74.06%	13.61%	9.73%	1.35%	0.52%	0.72%
1995	5561	72.45%	15.05%	10.20%	1.22%	0.54%	0.54%
1996	5335	71.68%	14.23%	11.57%	1.35%	0.49%	0.69%
1997	5492	72.20%	14.44%	11.00%	1.44%	0.42%	0.51%

### Enrollment by Ethnicity (Percentage) -- Fall Semesters 1993-97



Source: Institutional Effectiveness Database/CBM001

McLennan Community College 1997-98 Factbook

## MCC Enrollment Growth by Ethnicity -- Spring 1993-97

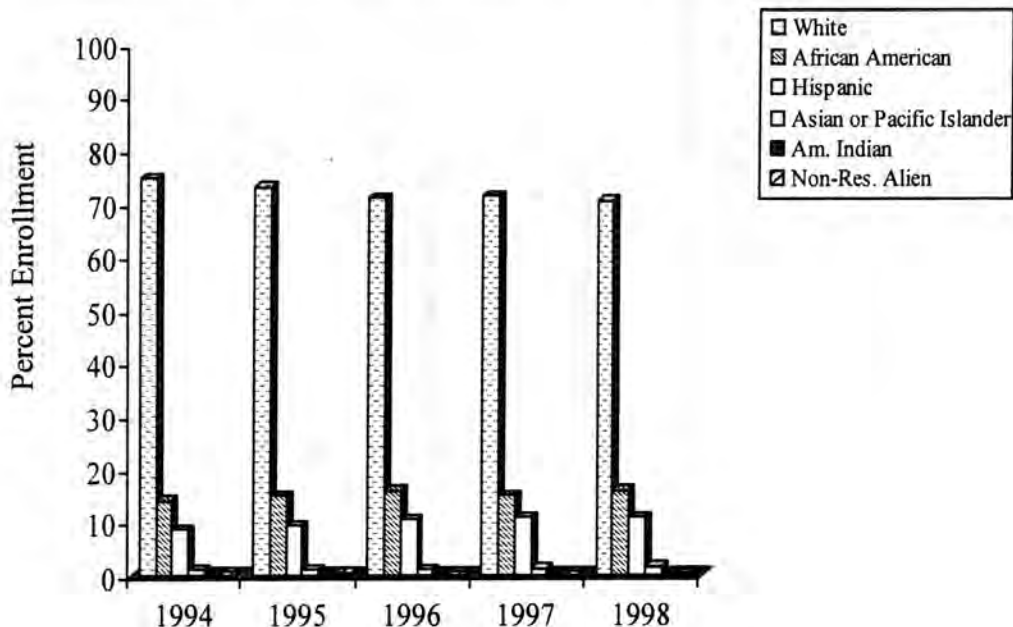
Year	Total Enrollment	White	African American	Hispanic	Asian or Pacific Islander	Am. Indian	Non-Res. Alien
1994	5339	3,987	752	471	69	18	42
1995	5662	4,137	855	538	70	29	33
1996	5216	3,702	832	551	69	28	34
1997	5323	3,799	805	583	76	21	39
1998	5307	3,739	850	584	94	14	26

5 yr % change:	-6.22%	13.03%	23.99%	36.23%	-22.22%	-38.10%
1 yr % change:	-1.58%	5.59%	0.17%	23.68%	-33.33%	-33.33%

### Percent

Year	Total Enrollment	White	African American	Hispanic	Asian or Pacific Islander	Am. Indian	Res. Alien
1994	5339	74.68%	14.09%	8.82%	1.29%	0.34%	0.79%
1995	5662	73.07%	15.10%	9.50%	1.24%	0.51%	0.58%
1996	5216	70.97%	15.95%	10.56%	1.32%	0.54%	0.65%
1997	5323	71.37%	15.12%	10.95%	1.43%	0.39%	0.73%
1998	5307	70.45%	16.02%	11.00%	1.77%	0.26%	0.49%

Enrollment by Ethnicity (Percentage) -- Spring Semesters 1993-97



Source: Institutional Effectiveness Database/CBM001

McLennan Community College 1997-98 Factbook

## MCC Enrollment Growth by Gender -- Fall 1993-97

Year	Total Enrollment	Female	%	Male	%
1993	5,703	3,640	63.83%	2,063	36.17%
1994	5,540	3,549	64.06%	1,991	35.94%
1995	5,561	3,564	64.09%	1,997	35.91%
1996	5,335	3,455	64.76%	1,880	35.24%
1997	5,492	3,591	65.39%	1,901	34.61%

5 yr % change

-1.35%

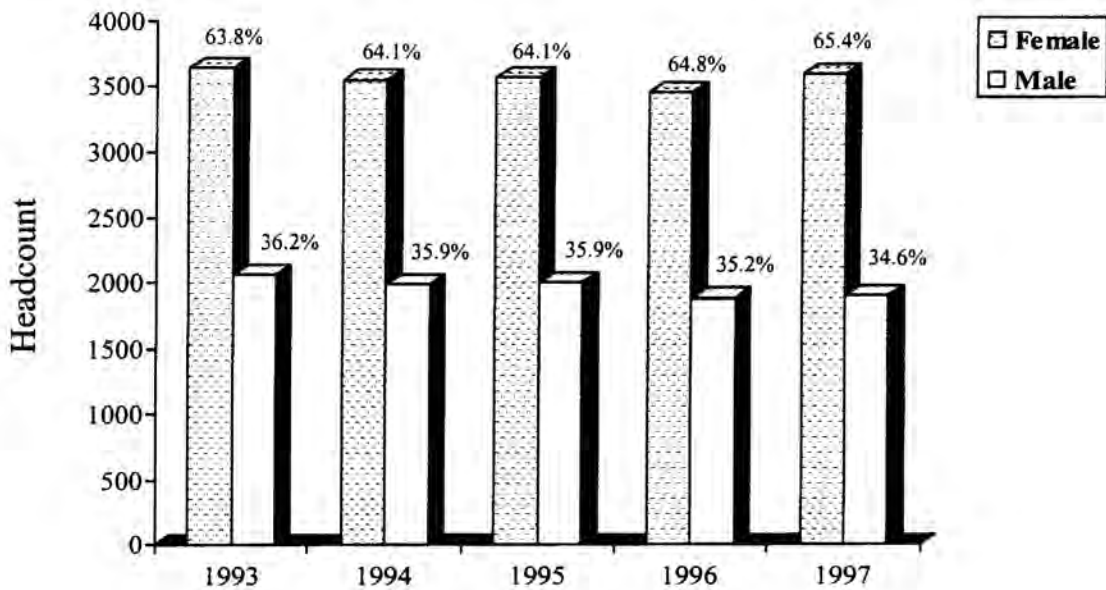
-7.85%

1 yr % change

3.94%

1.12%

## Enrollment by Gender -- Fall Semesters 1993-97



Source: Institutional Effectiveness Database/CBM001

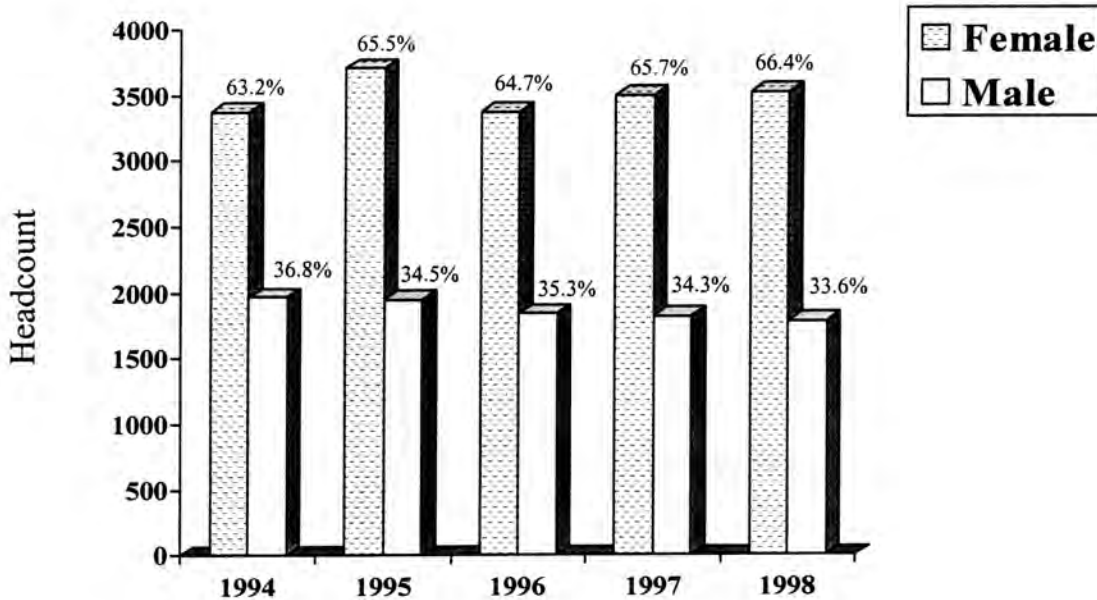
McLennan Community College 1997-98 Factbook



## MCC Enrollment Growth by Gender -- Spring 1994-98

Year	Total Enrollment	Female	%	Male	%
1993	5,339	3,373	63.20%	1,966	36.80%
1995	5,662	3,710	65.52%	1,952	34.48%
1996	5,216	3,373	64.67%	1,843	35.33%
1997	5,323	3,497	65.70%	1,826	34.30%
1998	5,307	3,524	66.40%	1,783	33.60%
5 yr % change		4.48%		-9.31%	
1 yr % change		0.77%		-2.35%	

### Enrollment by Gender -- Spring Semesters 1994-98



Source: Institutional Effectiveness Database/CBM001

McLennan Community College 1997-98 Factbook

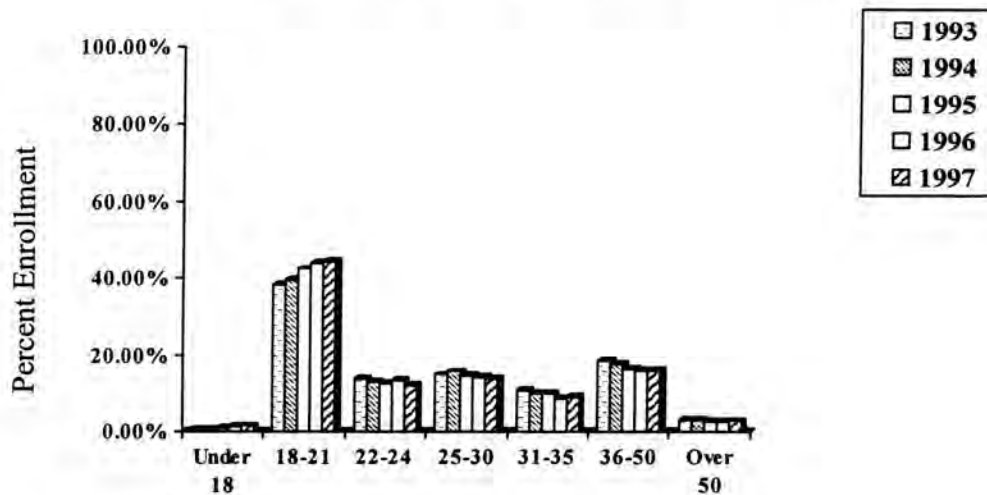
## MCC Enrollment Growth by Age -- Fall 1993-97

Year	Total Enrollment	Under 18	18-21	22-24	25-30	31-35	36-50	Over 50
1993	5,703	39	2,181	789	848	621	1,052	173
1994	5,540	32	2,197	723	872	560	982	174
1995	5,561	49	2,361	701	822	557	921	150
1996	5,335	67	2,354	712	760	460	845	137
1997	5,492	86	2,445	666	750	507	880	158
<b>5 yr % change</b>		120.51%	12.10%	-15.59%	-11.56%	-18.36%	-16.35%	-8.67%
<b>1 yr % change</b>		28.36%	3.87%	-6.46%	-1.32%	10.22%	4.14%	15.33%

### Percent

Year	Total Enrollment	Under 18	18-21	22-24	25-30	31-35	36-50	Over 50
1993	5,703	0.68%	38.24%	13.83%	14.87%	10.89%	18.45%	3.03%
1994	5,540	0.58%	39.66%	13.05%	15.74%	10.11%	17.73%	3.14%
1995	5,561	0.88%	42.46%	12.61%	14.78%	10.02%	16.56%	2.70%
1996	5,335	1.26%	44.12%	13.35%	14.25%	8.62%	15.84%	2.57%
1997	5,492	1.57%	44.52%	12.13%	13.66%	9.23%	16.02%	2.88%

### Enrollment by Age -- Fall 1993-97



Source: Institutional Effectiveness Database/CBM001

McLennan Community College 1997-98 Factbook

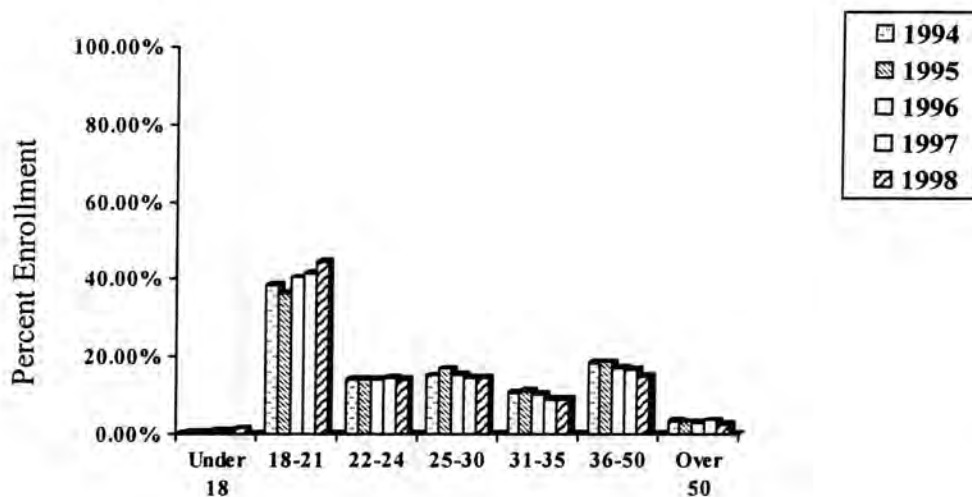
## MCC Enrollment Growth by Age -- Spring 1994-98

Year	Total							
	Enrollment	Under 18	18-21	22-24	25-30	31-35	36-50	Over 50
1994	5,339	25.00	2,050.00	750.00	803.00	566.00	978.00	167.00
1995	5,662	17.00	2,047.00	798.00	952.00	626.00	1,048.00	174.00
1996	5,216	27.00	2,106.00	725.00	800.00	529.00	886.00	143.00
1997	5,323	39.00	2,200.00	771.00	775.00	472.00	882.00	184.00
1998	5,307	70.00	2,350.00	741.00	766.00	461.00	785.00	134.00
<b>5 yr % change</b>		180.00%	14.63%	-1.20%	-4.61%	-18.55%	-19.73%	-19.76%
<b>1 yr % change</b>		79.49%	6.82%	-3.89%	-1.16%	-2.33%	-11.00%	-27.17%

### Percent

Year	Total							
	Enrollment	Under 18	18-21	22-24	25-30	31-35	36-50	Over 50
1994	5,339	0.47%	38.40%	14.05%	15.04%	10.60%	18.32%	3.13%
1995	5,662	0.30%	36.15%	14.09%	16.81%	11.06%	18.51%	3.07%
1996	5,216	0.52%	40.38%	13.90%	15.34%	10.14%	16.99%	2.74%
1997	5,323	0.73%	41.33%	14.48%	14.56%	8.87%	16.57%	3.46%
1998	5,307	1.32%	44.28%	13.96%	14.43%	8.69%	14.79%	2.52%

### Enrollment by Age -- Spring 1993-97



Source: Institutional Effectiveness Database/CBM001

McLennan Community College 1997-98 Factbook

## MCC Enrollment by Division -- Fall and Spring 1993-98

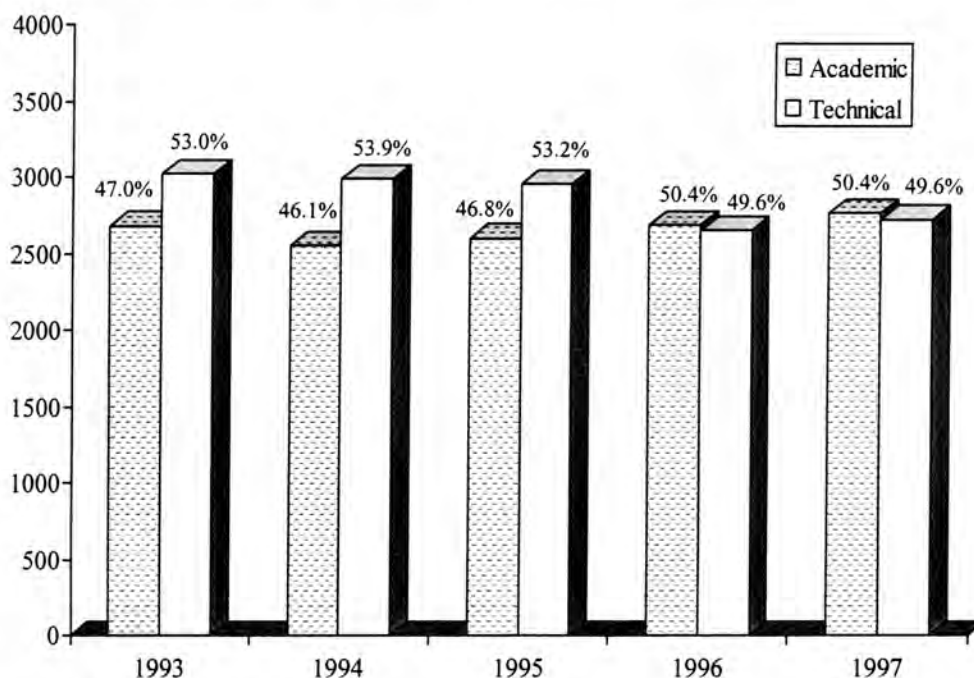
### Fall Semesters

Year	Total Enrollment	Academic	% Enrollment	Technical	% Enrollment
1993	5,703	2,680	47.00%	3,023	53.00%
1994	5,540	2,554	46.10%	2,986	53.90%
1995	5,561	2,601	46.77%	2,960	53.23%
1996	5,335	2,687	50.37%	2,648	49.63%
1997	5,492	2,768	50.40%	2,724	49.60%
<b>5 yr % change</b>		3.28%		-9.89%	
<b>1 yr % change</b>		3.01%		2.87%	

### Spring Semesters

Year	Total Enrollment	Academic	% Enrollment	Technical	% Enrollment
1994	5,339	2,453	45.94%	2,886	54.06%
1995	5,662	2,519	44.49%	3,143	55.51%
1996	5,216	2,430	46.59%	2,786	53.41%
1997	5,323	2,544	47.79%	2,779	52.21%
1998	5,307	2,676	50.42%	2,631	49.58%
<b>5 yr % change</b>		9.09%		-8.84%	
<b>1 yr % change</b>		5.19%		-5.33%	

### Enrollment by Division -- Fall 1993-97



Source: Institutional Effectiveness Database/CBM001

McLennan Community College 1997-98 Factbook

## MCC Enrollment Growth by County -- Fall 1993-97

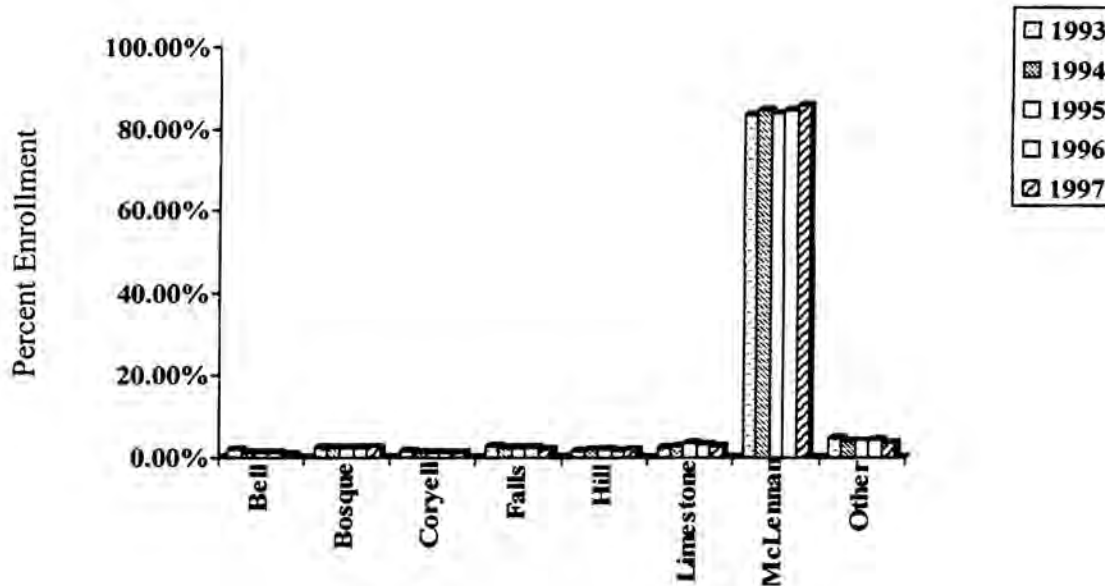
Year	Total Enrollment	Bell	Bosque	Coryell	Falls	Hill	Limestone	McLennan	Other
1993	5,613	101	118	89	152	84	130	4,683	256
1994	5,436	50	131	66	128	99	149	4,612	201
1995	5,463	66	124	61	124	105	182	4,579	222
1996	5,225	48	117	63	113	79	166	4,424	215
1997	5,382	39	131	65	103	98	139	4,625	182
<b>5 yr % change</b>		-61.39%	11.02%	-26.97%	-32.24%	16.67%	6.92%	-1.24%	-28.91%
<b>1 yr % change</b>		1.69%	0.96%	1.64%	0.81%	1.57%	0.50%	0.02%	0.39%

### Percent

Year	Total Enrollment	Bell	Bosque	Coryell	Falls	Hill	Limestone	McLennan	Other
1993	5,613	1.80%	2.10%	1.59%	2.71%	1.50%	2.32%	83.43%	4.56%
1994	5,436	0.92%	2.41%	1.21%	2.35%	1.82%	2.74%	84.84%	3.70%
1995	5,463	1.21%	2.27%	1.12%	2.27%	1.92%	3.33%	83.82%	4.06%
1996	5,225	0.92%	2.24%	1.21%	2.16%	1.51%	3.18%	84.67%	4.11%
1997	5,382	0.72%	2.43%	1.21%	1.91%	1.82%	2.58%	85.93%	3.38%

Note: Totals based on Texas residents only

### Enrollment by County -- Fall 1993-97



Source: Institutional Effectiveness Database/CBM001

McLennan Community College 1997-98 Factbook

## MCC Enrollment Growth by County -- Spring 1994-98

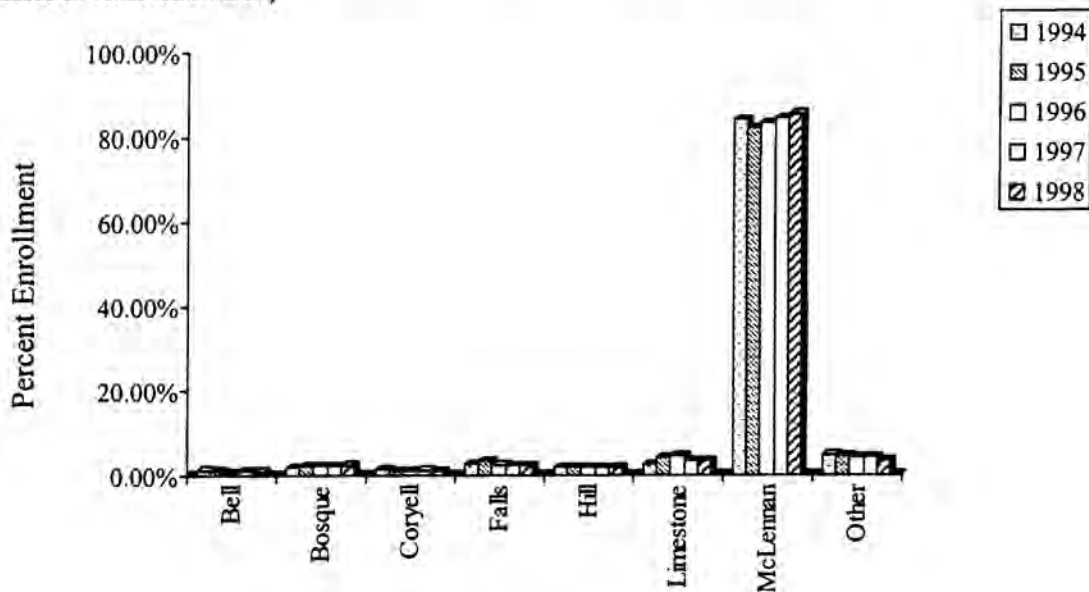
Year	Total Enrollment	Bell	Bosque	Coryell	Falls	Hill	Limestone	McLennan	Other
1994	5,230	61	99	76	126	88	134	4,402	244
1995	5,545	56	113	56	185	97	221	4,565	252
1996	5,116	36	111	52	120	91	221	4,273	212
1997	5,213	48	115	61	115	87	175	4,400	212
1998	5,176	39	120	55	109	84	167	4,426	176
<b>5 yr % change</b>		-36.07%	21.21%	-27.63%	-13.49%	-4.55%	24.63%	0.55%	-27.87%
<b>1 yr % change</b>		-18.75%	4.35%	-9.84%	-5.22%	-3.45%	-4.57%	0.59%	-16.98%

### Percent

Year	Total Enrollment	Bell	Bosque	Coryell	Falls	Hill	Limestone	McLennan	Other
1994	5,230	1.17%	1.89%	1.45%	2.41%	1.68%	2.56%	84.17%	4.67%
1995	5,545	1.01%	2.04%	1.01%	3.34%	1.75%	3.99%	82.33%	4.54%
1996	5,116	0.70%	2.17%	1.02%	2.35%	1.78%	4.32%	83.52%	4.14%
1997	5,213	0.92%	2.21%	1.17%	2.21%	1.67%	3.36%	84.40%	4.07%
1998	5,176	0.75%	2.32%	1.06%	2.11%	1.62%	3.23%	85.51%	3.40%

## Enrollment by County -- Spring 1994-98

Note: Totals based on Texas residents only



Source: Institutional Effectiveness Database/CBM001

McLennan Community College 1997-98 Factbook

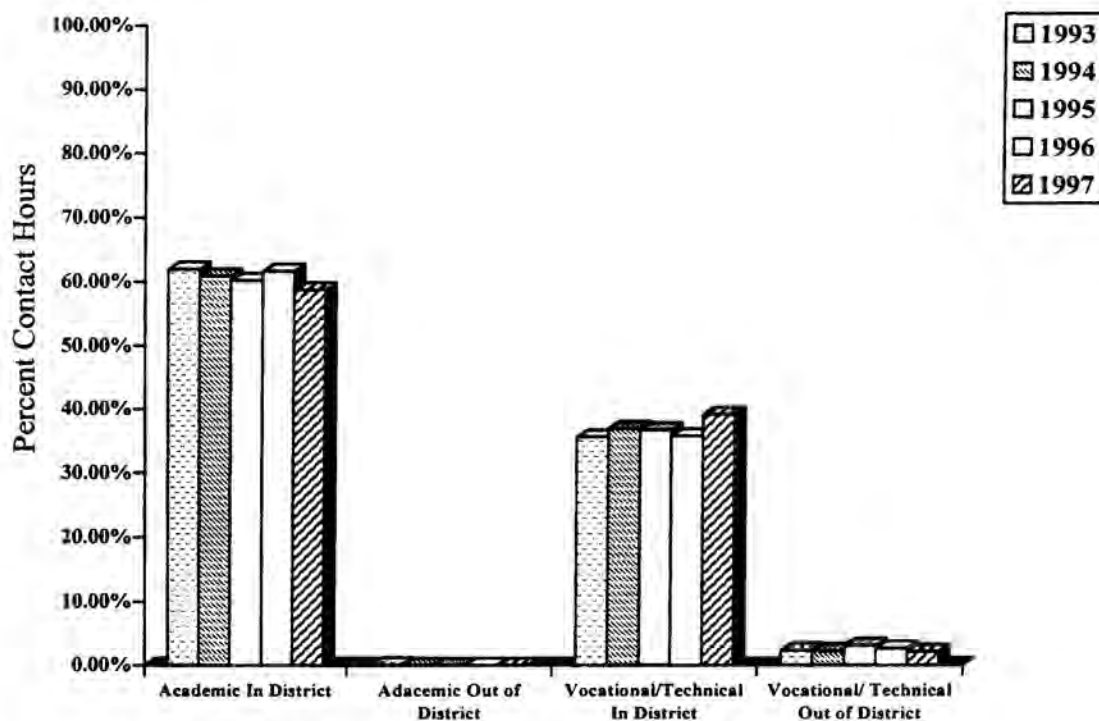
## MCC Contact Hour Growth -- Fall 1993-97

Year	Total Contact Hours	Academic In District	Academic Out of District	Vocational/ Technical In District	Vocational/ Technical Out of District
1993	1,144,556	709,152	1,056	407,596	26,752
1994	1,111,504	676,336	0	410,592	24,576
1995	1,155,648	695,728	0	424,368	35,552
1996	1,115,720	687,792	0	398,680	29,248
1997	1,119,904	657,696	0	438,432	23,776
<b>5 yr% change</b>	-2.15%	-7.26%		7.57%	-11.12%
<b>1 yr % change</b>	0.38%	-4.38%		9.97%	-18.71%

### Percent

Year	Total Contact Hours	Academic In District	Academic Out of District	Vocational/ Technical In District	Vocational/ Technical Out of District
1993	1,144,556	61.96%	0.09%	35.61%	2.34%
1994	1,111,504	60.85%	0.00%	36.94%	2.21%
1995	1,155,648	60.20%	0.00%	36.72%	3.08%
1996	1,115,720	61.65%	0.00%	35.73%	2.62%
1997	1,119,904	58.73%	0.00%	39.15%	2.12%

Percentage of Contact Hours by Division -- Fall 1993-97



Source: Institutional Effectiveness Database/CBM001

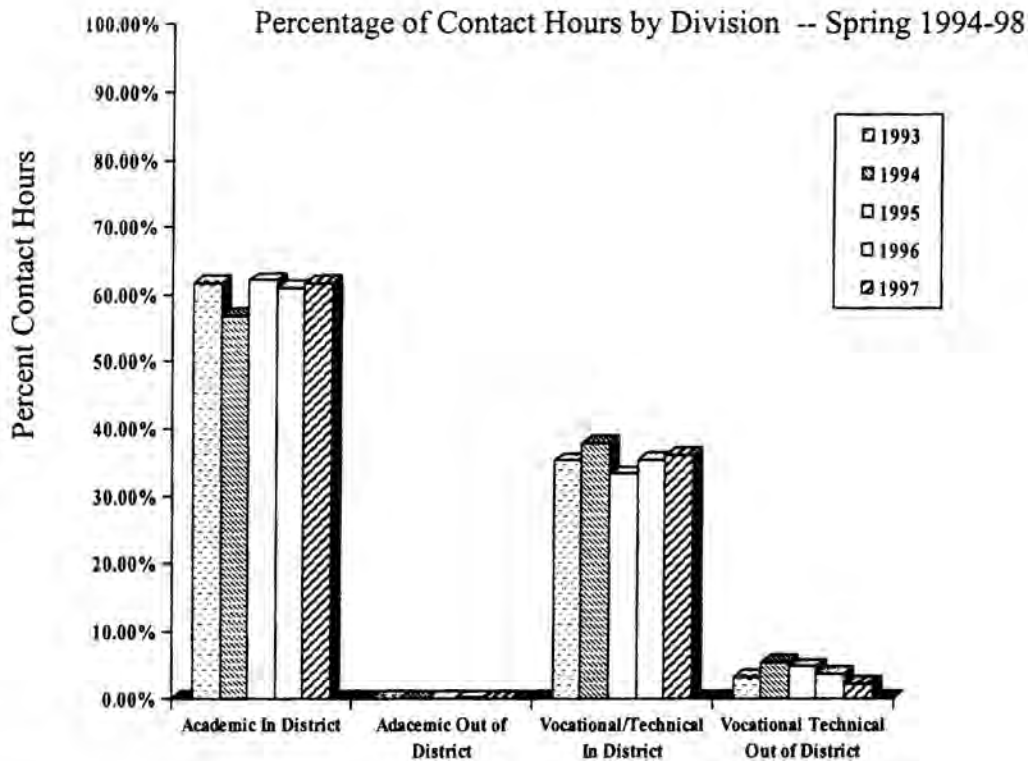
McLennan Community College 1997-98 Factbook

## MCC Contact Hour Growth -- Spring 1994-98

Year	Total Contact Hours	Academic In District	Academic Out of District	Vocational/ Technical In District	Vocational/ Technical Out of District
1994	1,067,132	658,624	0	375,996	32,512
1995	1,149,692	653,568	0	434,012	62,112
1996	1,032,432	640,656	0	343,360	48,416
1997	1,112,008	677,968	384	392,952	40,704
1998	1,041,360	643,472	0	375,040	22,848
<b>5 yr % change</b>	-2.42%	-2.30%		-0.25%	-29.72%
<b>1 yr % change</b>	-6.35%	-5.09%		-4.56%	-43.87%

### Percent

Year	Total Contact Hours	Academic In District	Academic Out of District	Vocational/ Technical In District	Vocational/ Technical Out of District
1994	1,067,132.00	61.72%	0.00%	35.23%	3.05%
1995	1,149,692.00	56.85%	0.00%	37.75%	5.40%
1996	1,032,432.00	62.05%	0.00%	33.26%	4.69%
1997	1,112,008.00	60.97%	0.03%	35.34%	3.66%
1998	1,041,360.00	61.79%	0.00%	36.01%	2.19%



Source: Institutional Effectiveness Database/CBM001

McLennan Community College 1997-98 Factbook

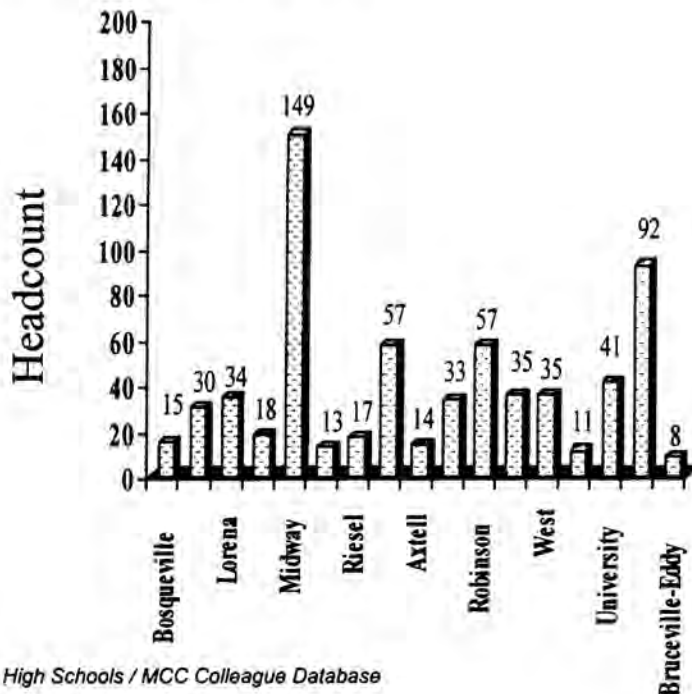


## MCC Enrollment by High School Graduate -- Fall 1993-97

School	92-93 Grads	Attnd 93/Fa	%	93-94 Grads	Attnd 94/Fa	%	94-95 Grads	Attnd 95/Fa	%	95-96 Grads	Attnd 96/Fa	%	96-97 Grads	Attnd 97/Fa	%
Bosqueville	12	5	41.7	24	9	37.5	27	11	40.7	19	13	68.4	25	15	60.0
McGregor	63	18	28.6	47	10	21.3	63	21	33.3	60	41	68.3	58	30	51.7
Lorena	80	34	42.5	66	19	28.8	76	34	44.7	81	33	40.7	75	34	45.3
Mart	37	12	32.4	33	13	39.4	44	14	31.8	37	16	43.2	40	18	45.0
Midway	330	104	31.5	324	122	37.7	295	141	47.8	381	129	33.9	340	149	43.8
Crawford	30	13	43.3	24	10	41.7	32	11	34.4	37	10	27.0	31	13	41.9
Riesel	28	8	28.6	37	7	18.9	35	15	42.9	33	16	48.5	41	17	41.5
Connally	126	43	34.1	130	36	27.7	109	38	34.9	118	29	24.6	140	57	40.7
Axtell	27	9	33.3	32	11	34.4	28	12	42.9	40	18	45.0	35	14	40.0
China Spring	58	18	31.0	57	19	33.3	78	30	38.5	74	36	48.6	84	33	39.3
Robinson	118	50	42.4	131	60	45.8	114	50	43.9	127	57	44.9	147	57	38.8
La Vega	91	24	26.4	88	27	30.7	99	42	42.4	100	28	28.0	101	35	34.7
West	91	36	39.6	97	28	28.9	95	31	32.6	98	36	36.7	106	35	33.0
Moody	37	9	24.3	27	2	7.4	43	5	11.6	37	4	10.8	42	11	26.2
University										166	49	29.5	167	41	24.6
Waco High	465	114	24.5	441	81	18.4	450	127	28.2	306	83	27.1	390	92	23.6
Bruceville-Eddy	34	14	41.2	34	8	23.5	34	12	35.3	42	18	42.9	41	8	19.5

## Enrollment by 1997 High School Graduates -- Fall 1997

Note: Only includes local area High Schools



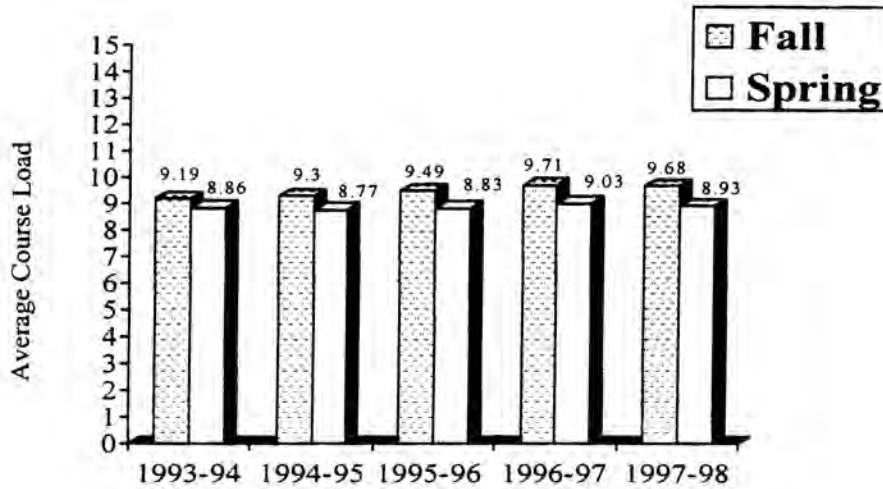
Source: Local Area High Schools / MCC Colleague Database

McLennan Community College 1997-98 Factbook

## MCC Average Course Load

---

Historical - Campus Data



### Fall 1997 - Course Load by Ethnicity, Gender, and Age

<b>Gender</b>	<b>Average Course Load</b>
Male	10.16
Female	9.43
<b>Ethnicity</b>	<b>Average Course Load</b>
White	9.68
African American	9.44
Hispanic	9.71
Asian or Pac. Islander	10.75
Am. Indian / Alaskan Native	8.52
Non-Res. Alien	14.04
<b>Age</b>	<b>Average Course Load</b>
< 18	7.79
18-21	11.93
22-24	9.35
25-30	8.28
31-35	7.66
36-50	6.88
Over 50	5.41

Source: Institutional Effectiveness Database/CBM001

McLennan Community College 1997-98 Factbook

# SECTION VI

## STUDENT PERFORMANCE

Grade Distribution .....	58
Grade Distribution by Division .....	59
Grade Distribution by Department .....	61
Duplicated Enrollment .....	63
Declared Majors .....	65
Percentage of Students who are Academically Disadvantaged .....	67
Percentage of Students who are Economically Disadvantaged .....	68
Disabled and Displaced Homemakers .....	69
Single Parents and Limited English Proficiency .....	70
Remedial Needs .....	71
Graduates by Degree .....	72
Graduates by Ethnicity and Gender .....	73
Graduates by Major .....	74

## MCC Grade Distribution -- 1993-98

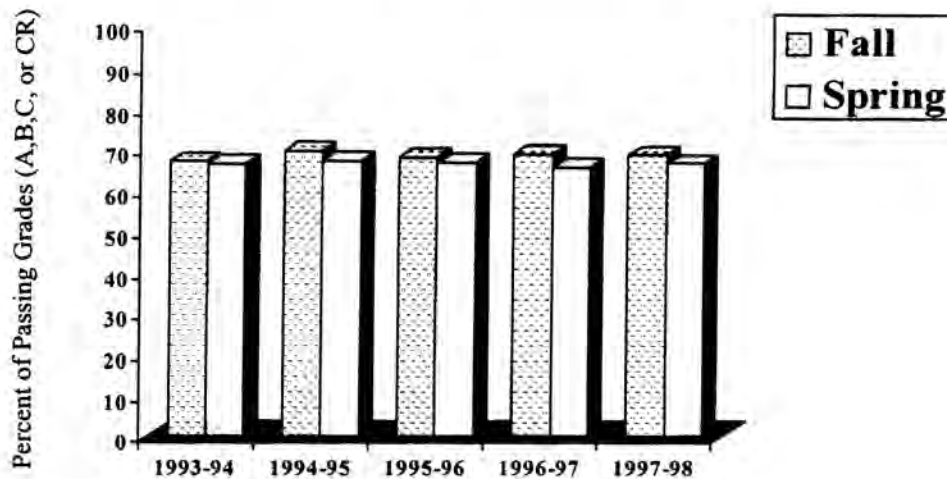
### Fall Semesters

Term	A,B,C or CR		W - Attrition	
	#	%	#	%
1993	12675	67.24	3900	20.69
1994	13395	69.90	3812	19.89
1995	13445	68.19	4156	21.08
1996	13139	69.11	3650	19.20
1997	13339	68.94	3925	20.28

### Spring Semesters

Term	A,B,C or CR		W - Attrition	
	#	%	#	%
1994	12051	66.51	4210	23.24
1995	12460	67.48	4017	21.75
1996	12314	66.97	4204	22.86
1997	11973	65.84	4159	22.87
1998	11722	66.80	4037	23.00

### Pass Rate (A,B,C, or CR) -- Academic Year 1993-97



Source: Institutional Database (Colleague)

McLennan Community College 1997-98 Factbook

## MCC Grade Distribution by Division -- Fall 1993-97

---

### Liberal Arts

Term	Pass Rate A,B,C or CR		Attrition Withdraw	
	#	%	#	%
93/FA	4,783	62.79	1,765	23.17
94/FA	4,934	65.52	1,625	21.58
95/FA	4,730	62.19	1,843	24.23
96/FA	4,764	65.71	1,571	21.67
97/FA	4,748	66.35	1,557	21.76

### Math/Science/HPE

Term	Pass Rate A,B,C or CR		Attrition Withdraw	
	#	%	#	%
93/FA	2,412	58.35	999	24.17
94/FA	2,426	61.34	957	24.20
95/FA	2,363	61.60	928	24.19
96/FA	2,402	62.37	747	19.40
97/FA	2,451	61.85	863	21.78

### Fine Arts

Term	Pass Rate A,B,C or CR		Attrition Withdraw	
	#	%	#	%
93/FA	936	85.01	110	9.99
94/FA	905	82.05	159	14.42
95/FA	1,056	82.95	142	11.15
96/FA	987	83.36	145	12.25
97/FA	914	79.41	182	15.81

### Health Careers

Term	Pass Rate A,B,C or CR		Attrition Withdraw	
	#	%	#	%
93/FA	927	87.45	97	9.15
94/FA	979	90.82	69	6.40
95/FA	1,146	89.46	84	6.56
96/FA	1,179	84.52	133	9.53
97/FA	1,102	81.45	160	11.83

Source: Institutional Database (Colleague)

McLennan Community College 1997-98 Factbook

## MCC Grade Distribution by Division -- Fall 1993-97 (Continued)

---

### Human Services

	Pass Rate A,B,C or CR		Attrition Withdraw	
	#	%	#	%
93/FA	1,312	79.23	247	14.92
94/FA	1,651	80.54	298	14.54
95/FA	1,609	76.95	362	17.31
96/FA	1,283	74.77	282	16.43
97/FA	1,264	77.36	306	18.73

### Business Programs

	Pass Rate A,B,C or CR		Attrition Withdraw	
	#	%	#	%
93/FA	2,305	70.25	682	20.79
94/FA	2,494	72.50	703	20.44
95/FA	2,541	70.00	797	21.96
96/FA	2,524	69.80	772	21.35
97/FA	2,860	69.88	857	20.94

Source: Institutional Database (Colleague)

McLennan Community College 1997-98 Factbook

## MCC Grade Distribution by Department -- Fall 1997

---

	A,B,C or CR		W--Attrition	
	Count	%	Count	%
ACCT	305	68.08	113	25.22
AERO	4	100.00		
ANTH	18	78.26	5	21.74
ARTS	195	74.71	42	16.09
BCTT	58	82.86	12	17.14
BIOL	459	67.20	169	24.74
BUSI	675	70.68	175	18.32
CHDE	471	78.89	110	18.43
CHEM	94	62.25	41	27.15
CISY	418	68.75	128	21.05
CMAP	81	73.64	27	24.55
CMUS	277	77.81	43	12.08
COMM	59	73.75	20	25.00
COSC	440	67.48	159	24.39
COSM	32	88.89	3	8.33
CRIJ	222	69.81	72	22.64
DANC	56	82.35	8	11.76
DRAM	250	83.33	43	14.33
ECON	195	63.73	67	21.90
EDUC	9	47.37	10	52.63
EMSP	25	49.02	12	23.53
ENGL	1231	63.16	512	26.27
ENGR	9	69.23	4	30.77
ENVS	44	78.57	9	16.07
ESOL	6	60.00		
FIRE	84	87.50	8	8.33
FREN	8	53.33	6	40.00
FSER	2	66.67	1	33.33
GEOG	21	70.00	9	30.00
GEOL	38	77.55	11	22.45
GOVT	505	71.63	120	17.02
HIST	692	67.71	215	21.04
HITE	33	94.29	1	2.86
HSCI	239	70.92	66	19.58
HUMA	12	100.00		
HUMD	122	55.96	37	16.97
INTR	88	74.58	30	25.42
LEGA	89	79.46	21	18.75
MATH	915	48.03	449	23.57
MHLT	251	76.06	62	18.79
MLTE	26	83.87	2	6.45
MUAP	83	80.58	19	18.45
MUSI	330	78.76	70	16.71
NUHA	27	100.00		
NURS	371	87.91	31	7.35
OFAD	263	64.78	106	26.11
ORIE	283	73.70	43	11.20
PHED	836	80.23	173	16.60

Source: MCC Colleague Database

McLennan Community College 1997-98 Factbook

## MCC Grade Distribution by Department -- Fall 1997 (Continued)

	A,B,C or CR		W--Attrition	
	Count	%	Count	%
PHIL	84	66.14	30	23.62
PHLB	30	83.33	2	5.56
PHYS	56	87.50	7	10.94
PSYC	516	69.17	144	19.30
PTAP	91	96.81	3	3.19
RADT	114	90.48	10	7.94
RCTP	88	72.73	27	22.31
READ	296	61.28	99	20.50
REAL	89	75.42	22	18.64
RELI	161	63.64	52	20.55
SOCI	215	73.63	59	20.21
SPAN	89	59.33	56	37.33
SPCH	417	65.77	140	22.08
VONU	142	88.20	10	6.21

Source: Institutional Database (Colleague)

McLennan Community College 1997-98 Factbook



## MCC Duplicated Enrollment by Department -- Fall 1993-97

Department	93/FA		94/FA		95/FA		96/FA		97/FA		5 yr % change	1 yr % change
	#	%	#	%	#	%	#	%	#	%		
ACCT	396	2.10	422	2.20	438	2.22	425	2.24	448	2.32	13.13%	5.41%
AERO	4	0.02	3	0.02	8	0.04	5	0.03	4	0.02	0.00%	-20.00%
ANTH	26	0.14	23	0.12	29	0.15	20	0.11	23	0.12	-11.54%	15.00%
ARTS	228	1.21	224	1.17	256	1.30	244	1.28	261	1.35	14.47%	6.97%
BCTT									70	0.36		
BIOL	803	4.26	775	4.04	725	3.68	715	3.76	683	3.53	-14.94%	-4.48%
BUSI	688	3.65	819	4.27	798	4.05	745	3.92	955	4.94	38.81%	28.19%
CHDE	530	2.81	631	3.29	789	4.00	608	3.20	597	3.09	12.64%	-1.81%
CHEM	164	0.87	158	0.82	170	0.86	138	0.73	151	0.78	-7.93%	9.42%
CISY	421	2.23	420	2.19	436	2.21	513	2.70	608	3.14	44.42%	18.52%
CMAP	97	0.51	82	0.43	103	0.52	86	0.45	110	0.57	13.40%	27.91%
CMUS	306	1.62	229	1.20	320	1.62	324	1.70	356	1.84	16.34%	9.88%
COMM	65	0.34	69	0.36	56	0.28	63	0.33	80	0.41	23.08%	26.98%
COSC	616	3.27	593	3.09	616	3.12	583	3.07	652	3.37	5.84%	11.84%
COSM	44	0.23	42	0.22	60	0.30	37	0.19	36	0.19	-18.18%	-2.70%
CRIJ	340	1.80	349	1.82	374	1.90	399	2.10	318	1.64	-6.47%	-20.30%
DANC	41	0.22	57	0.30	64	0.32	69	0.36	68	0.35	65.85%	-1.45%
DRAM	256	1.36	234	1.22	267	1.35	314	1.65	300	1.55	17.19%	-4.46%
ECON	301	1.60	265	1.38	321	1.63	346	1.82	306	1.58	1.66%	-11.56%
EDUC	25	0.13	24	0.13	22	0.11	19	0.10	19	0.10	-24.00%	0.00%
EMSP	57	0.30	66	0.34	69	0.35	40	0.21	51	0.26	-10.53%	27.50%
ENGL	2071	10.99	1770	9.24	1918	9.73	1871	9.84	1949	10.07	-5.89%	4.17%
ENGR	40	0.21	24	0.13	19	0.10	16	0.08	13	0.07	-67.50%	-18.75%
ENVS	42	0.22	32	0.17	38	0.19	24	0.13	56	0.29	33.33%	133.33%
ESOL	19	0.10	13	0.07	15	0.08	10	0.05	10	0.05	-47.37%	0.00%
FASH	38	0.20	40	0.21	17	0.09						
FIRE									96	0.50		
FREN					26	0.13	33	0.17	15	0.08		-54.55%
FSER	10	0.05	9	0.05	13	0.07	11	0.06	3	0.02	-70.00%	-72.73%
GEOG	35	0.19	40	0.21	36	0.18	40	0.21	30	0.16	-14.29%	-25.00%
GEOL	58	0.31	47	0.25	58	0.29	45	0.24	49	0.25	-15.52%	8.89%
GOVT	654	3.47	707	3.69	673	3.41	648	3.41	705	3.64	7.80%	8.80%
HCAR	153	0.81	171	0.89	329	1.67	320	1.68				
HIST	1102	5.85	960	5.01	936	4.75	931	4.90	1022	5.28	-7.26%	9.77%
HITE							13	0.07	35	0.18		
HSCI									337	1.74		
HUMA			19	0.10	12	0.06			12	0.06		
HUMD	120	0.64	304	1.59	359	1.82	255	1.34	218	1.13	81.67%	-14.51%
IMAG							12	0.06				
INTR	180	0.95	201	1.05	156	0.79	119	0.63	118	0.61	-34.44%	-0.84%
LEGA			97	0.51	126	0.64	117	0.62	112	0.58		-4.27%
MATH	1829	9.70	1801	9.40	1699	8.62	1811	9.53	1905	9.84	4.16%	5.19%
MHLT	509	2.70	676	3.53	517	2.62	402	2.11	330	1.71	-35.17%	-17.91%
MLTE	29	0.15	32	0.17	32	0.16	36	0.19	31	0.16	6.90%	-13.89%
MUAP	116	0.62	119	0.62	109	0.55	108	0.57	103	0.53	-11.21%	-4.63%

Source: Institutional Database (Colleague)

## MCC Duplicated Enrollment by Department -- Fall 1993-97 (Continued)

Department	93/FA		94/FA		95/FA		96/FA		97/FA		5 yr % change	1 yr % change
	#	%	#	%	#	%	#	%	#	%		
MUSI	460	2.44	469	2.45	577	2.93	449	2.36	419	2.17	-8.91%	-6.68%
NUHA	32	0.17	42	0.22	43	0.22	21	0.11	27	0.14	-15.63%	28.57%
NURS	236	1.25	238	1.24	393	1.99	413	2.17	422	2.18	78.81%	2.18%
OFAD	344	1.83	514	2.68	433	2.20	461	2.42	406	2.10	18.02%	-11.93%
ORIE	879	4.66	930	4.85	632	3.21	511	2.69	384	1.98	-56.31%	-24.85%
PHED	1093	5.80	1040	5.43	1051	5.33	1021	5.37	1042	5.39	-4.67%	2.06%
PHIL	80	0.42	86	0.45	116	0.59	137	0.72	127	0.66	58.75%	-7.30%
PHLB							25	0.13	36	0.19		
PHYS	105	0.56	78	0.41	76	0.39	81	0.43	64	0.33	-39.05%	-20.99%
PSYC	830	4.40	745	3.89	759	3.85	720	3.79	746	3.86	-10.12%	3.61%
PTAP	121	0.64	120	0.63	89	0.45	90	0.47	94	0.49	-22.31%	4.44%
RADT	170	0.90	161	0.84	149	0.76	142	0.75	126	0.65	-25.88%	-11.27%
RCTP	115	0.61	124	0.65	106	0.54	163	0.86	121	0.63	5.22%	-25.77%
READ	428	2.27	585	3.05	630	3.20	613	3.22	483	2.50	12.85%	-21.21%
REAL	85	0.45	66	0.34	100	0.51	97	0.51	118	0.61	38.82%	21.65%
RELI	296	1.57	255	1.33	303	1.54	284	1.49	253	1.31	-14.53%	-10.92%
SOCI	346	1.84	297	1.55	317	1.61	292	1.54	292	1.51	-15.61%	0.00%
SPAN	189	1.00	143	0.75	127	0.64	146	0.77	150	0.78	-20.63%	2.74%
SPCH	448	2.38	557	2.91	632	3.21	652	3.43	634	3.28	41.52%	-2.76%
VONU	179	0.95	166	0.87	175	0.89	179	0.94	161	0.83	-10.06%	-10.06%
<b>Total</b>	<b>18849</b>	<b>100</b>	<b>19163</b>	<b>100</b>	<b>19717</b>	<b>100</b>	<b>19012</b>	<b>100</b>	<b>19350</b>	<b>100</b>	<b>2.66%</b>	<b>1.78%</b>

Source: Institutional Database (Colleague)

McLennan Community College 1997-98 Factbook

## Area of Major -- Fall 1993-97

Major Area	1993	1994	1995	1996	1997
Com Music:Audio Tech	33	19	24	24	17
Computer Science	57	52	59	56	51
CIS Programming	109	94	85	71	67
Micro Comp Appl/CDP	81	83	94	119	133
Cosmetology Cert	22	34	44	25	22
Education, General	123	180	177	152	183
Education	138	100	71	67	88
English, General	14	9	12	12	10
Music Education	6	3	6	9	10
Health & Physical Ed	68	67	55	59	61
Engineering, General	64	58	55	40	44
Elctr/Elctrn/Com Eg	2	1	1		
Foreign Lang, Gen	1		1	1	
Spanish	3		1	3	
Home Economics, Gene		2	1		
Gerontology	1	24	19	7	10
C D SPECIAL PERSONS		5	165	104	104
Child Development	220	246	149	139	140
Child Dev Adm Cert.	3	3	5	5	10
Pre-Law	42	32	34	35	22
Legal Assistant		58	100	95	84
Speech	9	3	3	6	3
Gen Academic/Undeclared	1,226	1,214	1,379	1,547	1,550
Library Science	1				
Biology, General	31	16	26	21	17
Biochemistry	1	2	2		1
Microbiology				3	
Ecology	1				
Zoology, General	1	1	2	2	
Mathematics, General	11	6	7	5	7
Parks/Recreation,Gen		1	1	1	
Pre-Ministerial	6	5	9	5	3
Phys Sciences, Gen	13	7	1	2	
Chemistry, General	3	5	1	1	
Geology	2	2		3	1
Physics, General	2	1			
Psychology, General	118	109	76	74	76
CJ Corrections	47	39	40	31	27
CJ Law Enforcement	151	134	127	94	79
Criminal Justice	34	36	36	73	59
FIRE ACADEMY					26
Mgmt/Postal Service	2				1
Social Work, General	22	31	29	26	33
Economics	2			2	1
History	15	8	8	10	10
Pol Science/Govt	5	4	5	7	4

Source: Institutional Effectiveness Database/CBM001

## Area of Major -- Fall 1993-97 (Continued)

Major Area	1993	1994	1995	1996	1997
Sociology	12	15	9	14	9
Dance			2		
Interior Design	1	2		2	3
Drama	42	23	28	41	38
Photography		1	1		
Fine Arts, General	48	37	29	33	34
Music, General	43	47	39	32	35
Com Music:Performance	11	18	41	27	30
Com Mus:Comp/Arrange.	2	5	4	6	4
Speech Pathology/aud.	2	2	3	2	2
Interpreter Training	56	62	48	36	25
Long Term Health Care	13	3		6	5
Health Info. Tech.			1	11	15
Physical Therap Asst.	166	161	146	126	48
Emerg Med Serv Cert.	11	15	18	15	17
Radiologic Tech	130	122	104	93	49
Resp. Care Technology	29	35	47	56	37
Medical Lab Tech	45	46	42	34	31
Dentistry, Pre dental	3	9	12	8	6
Pre-Medical	62	77	52	46	44
Pre-pharmacy	11	12	14	10	9
Veterinary Medical Spec.		2		4	2
Subs Abuse Addiction	56	26	37	21	15
Mental Health Assoc	174	159	159	148	114
Assoc Degree Nursing	774	722	647	596	259
Vocational Nurs Cert	106	87	100	122	158
Physical Therapy	18	16	16	7	5
Business/General	82	87	92	130	114
Mgmt/Business	133	180	168	120	296
Business Administration	105	112	125	91	115
Business & Management	180	125	98	76	63
Mgmt/Accounting	187	141	144	159	128
Accounting Cert	13	45	17	19	16
Information Word Processing	35	39	41	27	44
Legal Secretarial	37	23	21	16	15
Medical Secretary	30	45	56	52	45
Clerical Typ Cert		3			
Mgmt/Financial Services	14	18	12	9	12
Mgmt/Real Estate	39	38	34	38	42
Special Student	241	204	176	119	601
	<b>5,601</b>	<b>5,458</b>	<b>5,493</b>	<b>5,288</b>	<b>5,439</b>

Source: Institutional Effectiveness Database/CBM001

McLennan Community College 1997-98 Factbook

## MCC Enrollment by Academically Disadvantaged

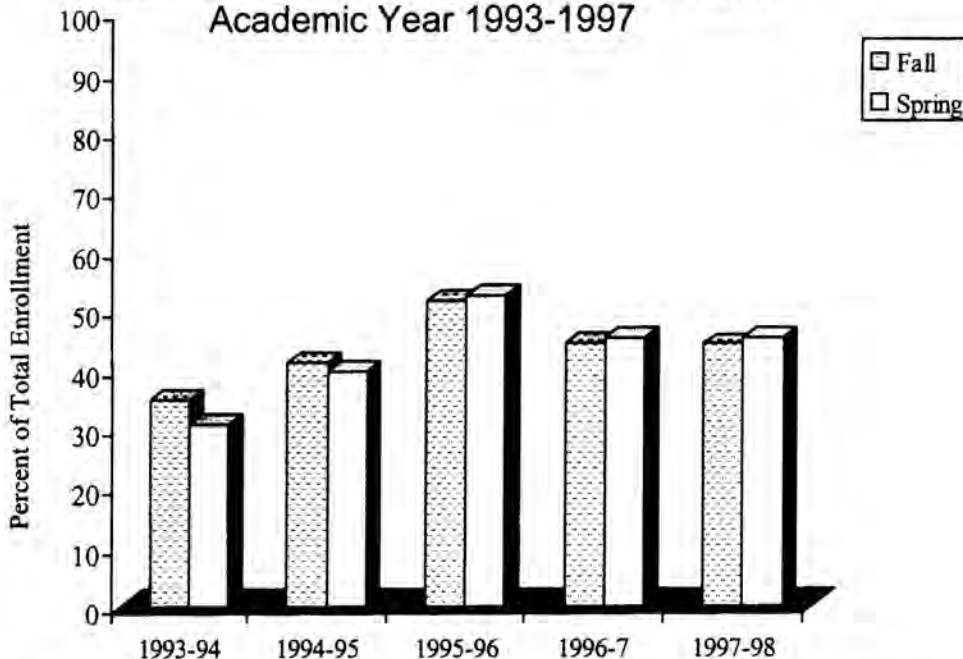
### Fall Semesters -- 1993-1997

Year	Total	Academically Disadvantaged	%
1993	5,703.00	1,978	34.68
1994	5,540.00	2,267	40.92
1995	5,561.00	2,869	51.59
1996	5,335.00	2,369	44.40
1997	5,492.00	2,425	44.16
<b>5 yr % change</b>		22.60%	
<b>1 yr % change</b>		2.36%	

### Spring Semesters -- 1994-1998

Year	Total	Academically Disadvantaged	%
1994	5,339.00	1,634	30.60
1995	5,662.00	2,231	39.40
1996	5,216.00	2,737	52.47
1997	5,323.00	2,401	45.11
1998	5,307.00	2,398	45.19
<b>5 yr % change</b>		46.76%	
<b>1 yr % change</b>		-0.12%	

**Enrollment by Academically Disadvantaged  
Academic Year 1993-1997**



*Note: THECB definition of academically disadvantaged reads as follows, "students who, based on TASP or local placement test, do not have college entry level skills in reading, writing, or math."*

*Source: Institutional Effectiveness Database/CBM001*

*McLennan Community College 1997-98 Factbook*



## MCC Enrollment by Disabled Status

---

### Fall Semesters -- 1993-1997

Year	Total	Disabled	%
1993	5,703	150	2.63
1994	5,540	214	3.86
1995	5,561	187	3.36
1996	5,335	223	4.18
1997	5,492	331	6.03
<b>5 yr % change</b>		120.67%	
<b>1 yr % change</b>		48.43%	

### Spring Semesters -- 1994-1998

Year	Total	Disabled	%
1994	5,339	151	2.83
1995	5,662	231	4.08
1996	5,216	203	3.89
1997	5,323	287	5.39
1998	5,307	322	6.07
<b>5 yr % change</b>		113.25%	
<b>1 yr % change</b>		12.20%	

## MCC Enrollment by Displaced Homemakers

---

### Fall Semesters -- 1993-1997

Year	Total	Displaced Homemakers	%
1993	5,703	213	3.73
1994	5,540	222	4.01
1995	5,561	193	3.47
1996	5,335	60	1.12
1997	5,492	165	3.00
<b>5 yr % change</b>		-22.54%	
<b>1 yr % change</b>		175.00%	

### Spring Semesters -- 1994-1998

Year	Total	Displaced Homemakers	%
1994	5,339	173	3.24
1995	5,662	245	4.33
1996	5,216	46	0.88
1997	5,323	164	3.08
1998	5,307	174	3.28
<b>5 yr % change</b>		0.58%	
<b>1 yr % change</b>		6.10%	

Source: Institutional Effectiveness Database/CBM001

McLennan Community College 1997-98 Factbook

## MCC Enrollment by Single Parent Status

---

### Fall Semesters -- 1993-1997

Year	Total	Single Parent	%
1993	5,703.00	457.00	8.01
1994	5,540.00	434.00	7.83
1995	5,561.00	505.00	9.08
1996	5,335.00	499.00	9.35
1997	5,492.00	702.00	12.78
<b>5 yr % change</b>		53.61%	
<b>1 yr % change</b>		40.68%	

### Spring Semesters -- 1994-1998

Year	Total	Single Parent	%
1994	5,339.00	410.00	7.68
1995	5,662.00	580.00	10.24
1996	5,216.00	247.00	4.74
1997	5,323.00	686.00	12.89
1998	5,307.00	.	

## MCC Enrollment by Limited English Proficiency (LEP)

---

### Fall Semesters -- 1993-1997

Year	Total	LEP	%
1993	5,703.00	88.00	1.54
1994	5,540.00	82.00	1.48
1995	5,561.00	103.00	1.85
1996	5,335.00	99.00	1.86
1997	5,492.00	260.00	4.73
<b>5 yr % change</b>		195.45%	
<b>1 yr % change</b>		162.63%	

### Spring Semesters -- 1994-1998

Year	Total	LEP	%
1994	5,339.00	91.00	1.70
1995	5,662.00	106.00	1.87
1996	5,216.00	66.00	1.27
1997	5,323.00	252.00	4.73
1998	5,307.00	296	5.58

\* Data not available

Source: Institutional Effectiveness Database/CBM001

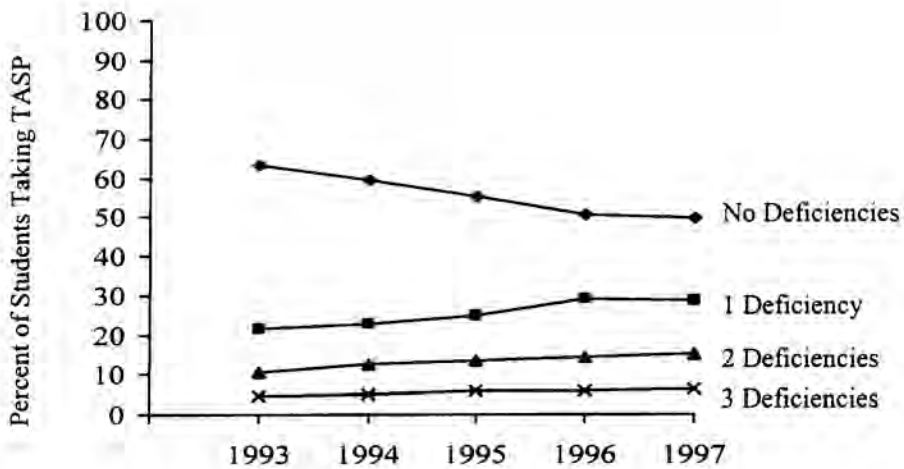
McLennan Community College 1997-98 Factbook



## MCC TASP Performance - Remedial Needs

*Note: Data reflect first time taken scores*

	1993		1994		1995		1996		1997	
	#	%	#	%	#	%	#	%	#	%
No Deficiencies	1663	63.1	1695	59.6	1719	55.4	1615	50.7	1602	49.8
1 Deficiency	570	21.6	645	22.7	779	25.1	929	29.2	925	28.8
2 Deficiencies	282	10.7	362	12.7	423	13.6	452	14.2	481	15
3 Deficiencies	122	4.6	144	5.1	180	5.8	189	5.9	207	6.4
<b>Total</b>	<b>2637</b>	<b>100</b>	<b>2846</b>	<b>100.1</b>	<b>3101</b>	<b>99.9</b>	<b>3185</b>	<b>100</b>	<b>3215</b>	<b>100</b>



*Note: Results represent students who completed the TASP test.*

Source: Institutional Database (Colleague)

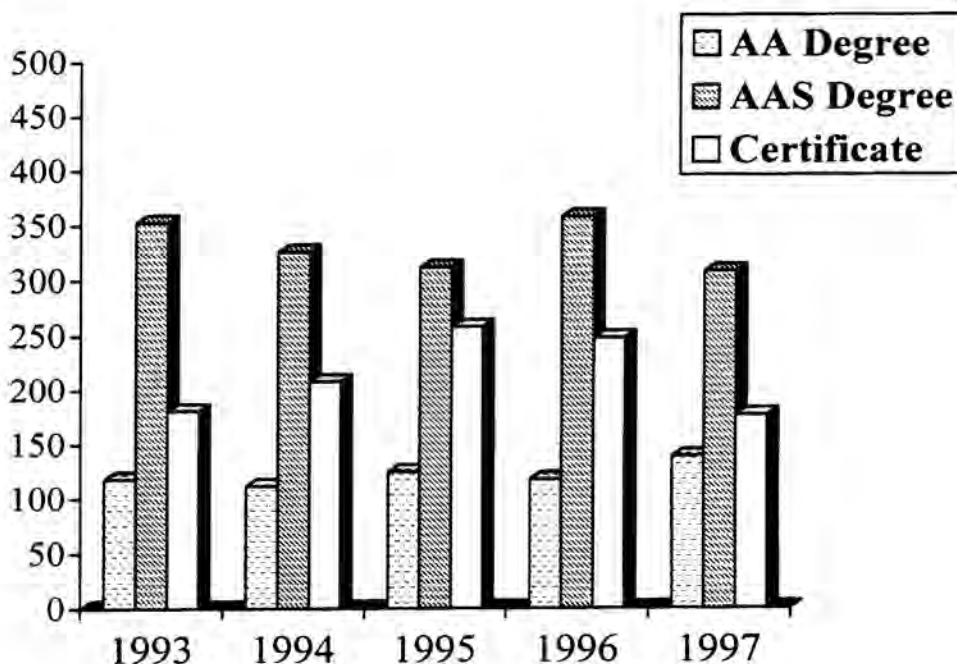
McLennan Community College 1997-98 Factbook

## MCC Graduates by Degree

---

Year	DEGREE			Total
	AA	AAS	CERT	
1993	118	353	181	652
1994	112	326	208	646
1995	125	312	258	695
1996	118	358	248	724
1997	139	308	177	624

MCC Graduates -- 1993-1997



Source: Institutional Effectiveness Database/CBM009

McLennan Community College 1997-98 Factbook

## MCC Graduates by Ethnicity

			Ethnicity					Total	
			White	African American	Hispanic	Asian or Pacific Islander	Am. Indian		Non-Res. Alien
1993	DEGREE	AA	86	20	10	1		1	118
		AAS	289	38	22	2	2		353
		CERT	130	40	9	1	1		181
1994	DEGREE	AA	83	15	9	3		2	112
		AAS	265	31	25	4	1		326
		CERT	159	33	13	3			208
1995	DEGREE	AA	98	15	9			3	125
		AAS	256	28	21	4	1	2	312
		CERT	192	41	19	3	1	2	258
1996	DEGREE	AA	95	13	7	1		2	118
		AAS	282	46	25	2		3	358
		CERT	151	66	24	2	5		248
1997	DEGREE	AA	108	14	13	1		3	139
		AAS	224	42	30	6	1	5	308
		CERT	110	47	16	2	2		177

## MCC Graduates by Gender

	Degree	Female	Male	Total
1993	AA	69	49	118
	AAS	268	85	353
	CERT	132	49	181
1994	AA	70	42	112
	AAS	244	82	326
	CERT	150	58	208
1995	AA	77	48	125
	AAS	231	81	312
	CERT	220	38	258
1996	AA	78	40	118
	AAS	275	83	358
	CERT	194	54	248
1997	AA	81	58	139
	AAS	247	61	308
	CERT	138	39	177

Source: Institutional Effectiveness Database/CBM009

McLennan Community College 1997-98 Factbook

## MCC Graduates by Major

1997 Reporting Period (December 1996, May 1997, August 1997)

Major	AA	AAS	CERT
Mgmt/Fashion Mdse		4	
Communications, Gen	1		
Jour (Mass Comm)	1		
Com Music:Audio Tech		3	
Computer Science	2		
CIS Programming		18	2
Micro Comp Appl/CDP		24	16
Cosmetology Cert			5
Education, General	12		
Education	14		
English, General	2		
Health & Physical Ed	8		
Engineering, General	3		
C D SPECIAL PERSONS		7	29
Child Development		1	4
Child Dev Adm Cert			2
Pre-Law	5		
Legal Assistant		14	
Gen Academic/Undecl	64		
Parks/Recreation,Gen	1		
Psychology, General	3		
CJ Corrections		2	3
CJ Law Enforcement		6	1
Social Work, General	4		
Pol Science/Govt	1		
Interior Design	1		
Drama	2		
Fine Arts, General	1		
Music, General	1		
Com Music:Performanc		1	
Com Mus:Comp/Arrang		1	
Interpreter Training		3	2
Physical Therap Asst		20	
Emerg Med Serv Cert			10
Radiologic Tech		19	
Resp. Care Techology		9	8
Medical Lab Tech		9	
Subs Abuse Addiction		7	5
Mental Health Assoc		29	14
Assoc Degree Nursing	1	76	
Vocational Nurs Cert			57
Business/General		9	
Mgmt/Business	1	20	5
Business Administrat	7		
Business & Managemen	4		
Mgmt/Accounting		14	
Accounting Cert			4
Information Word Pro		1	3
Legal Secretarial		1	
Medical Secretary Te		5	3
Mgmt/Financial Serv		1	1
Mgmt/Real Estate		4	3
	139	308	111

Source: Institutional Effectiveness Database/CBM009  
 McLennan Community College 1997-98 Factbook

# SECTION VII

## FACULTY PROFILE

Full-time and Part-time Faculty Headcount .....	76
Full-time and Part-time Faculty Headcount by Gender .....	76
Full-time and Part-time Faculty Headcount by Age .....	76
Full-time and Part-time Faculty Headcount by Ethnicity .....	77
Full-time and Part-time Faculty Headcount by Highest Degree Earned	78

## MCC Faculty Profile

### Full-time Status by Gender

	1993			1994			1995			1996			1997		
	F	M	Total	F	M	Total	F	M	Total	F	M	Total	F	M	Total
<b>Full-time</b>	110	91	201	103	86	189	95	88	183	93	77	170	92	77	169
<b>Part-time</b>	43	42	85	44	51	95	59	50	109	65	50	115	67	59	126
<b>Total</b>	153	133	286	147	137	284	154	138	292	158	127	285	159	136	295
<b>Percent</b>															
<b>Full-time</b>	54.73	45.27	100	54.50	45.50	100	51.91	48.09	100	54.71	45.29	100	54.44	45.56	100
<b>Part-time</b>	50.59	49.41	100	46.32	53.68	100	54.13	45.87	100	56.52	43.48	100	53.17	46.83	100
<b>Total</b>	53.50	46.50	100	51.76	48.24	100	52.74	47.26	100	55.44	44.56	100	53.90	46.10	100

### Fall 1997

#### Full-time vs. Part-time by Age

		< 25	25-30	31-35	36-50	50-60	60+	Total
<b>Full-time</b>	#		3	9	81	62	14	169
	%		1.78	5.33	47.93	36.69	8.28	100
<b>Part-time</b>	#	3	9	17	64	22	11	126
	%	2.38	7.14	13.49	50.79	17.46	8.73	100
<b>Total</b>	#	3	12	26	145	84	25	295
	%	1.02	4.07	8.81	49.15	28.47	8.47	100

#### Gender by Age

		< 25	25-30	31-35	36-50	50-60	60+	Total
<b>Female</b>	#	2	7	15	87	40	8	159
	%	1.26	4.40	9.43	54.72	25.16	5.03	100
<b>Male</b>	#	1	5	11	58	44	17	136
	%	0.74	3.68	8.09	42.65	32.35	12.50	100
<b>Total</b>	#	3	12	26	145	84	25	295
	%	1.02	4.07	8.81	49.15	28.47	8.47	100

#### Average Age

<b>Total</b>	47.3
<b>Full-time</b>	49.1
<b>Part-time</b>	44.8
<b>Female</b>	46.1
<b>Male</b>	48.6
<b>White</b>	47.5
<b>African American</b>	45
<b>Hispanic</b>	44.3
<b>Asian/Pacific Islander</b>	53
<b>Am. Indian/Alaskan</b>	45.5
<b>International</b>	47.3

Source: Institutional Effectiveness Database/CBM008

McLennan Community College 1997-98 Factbook

## MCC Faculty Profile (Continued)

### Full-time Status by Ethnicity

		1993	1994	1995	1996	1997
<b>Full-time</b>	White	175	170	184	151	148
	African American	15	12	12	13	13
	Hispanic	9	5	5	5	6
	Asian/Pacific Islander	2	2	1	1	2
	Am. Indian/Alaskan					
	International			1		
	<b>Total</b>	<b>201</b>	<b>189</b>	<b>183</b>	<b>170</b>	<b>169</b>
<b>Part-time</b>	White	77	83	98	105	112
	African American	4	3	1	4	5
	Hispanic	2	6	7	3	7
	Asian/Pacific Islander	1	2	2	2	
	Am. Indian/Alaskan	1	1	1	1	2
	International					
	<b>Total</b>	<b>85</b>	<b>95</b>	<b>109</b>	<b>115</b>	<b>126</b>
<b>Total</b>	White	252	253	262	256	260
	African American	19	15	13	17	18
	Hispanic	11	11	12	8	13
	Asian/Pacific Islander	3	4	3	3	2
	Am. Indian/Alaskan	1	1	1	1	2
	International			1		
	<b>Total</b>	<b>286</b>	<b>284</b>	<b>292</b>	<b>285</b>	<b>295</b>
<b>Percent</b>						
<b>Full-time</b>	White	87.06	89.95	89.62	88.82	87.57
	African American	7.46	6.35	6.56	7.65	7.69
	Hispanic	4.48	2.65	2.73	2.94	3.55
	Asian/Pacific Islander	1.00	1.06	0.55	0.59	1.18
	Am. Indian/Alaskan					
	International			0.55		
	<b>Total</b>	<b>100</b>	<b>100</b>	<b>100</b>	<b>100</b>	<b>100</b>
<b>Part-time</b>	White	90.59	87.37	89.91	91.30	88.89
	African American	4.71	3.16	0.92	3.48	3.97
	Hispanic	2.35	6.32	6.42	2.61	5.56
	Asian/Pacific Islander	1.18	2.11	1.83	1.74	
	Am. Indian/Alaskan	1.18	1.05	0.92	0.87	1.59
	International					
	<b>Total</b>	<b>100</b>	<b>100</b>	<b>100</b>	<b>100</b>	<b>100</b>
<b>Total</b>	White	88.11	89.08	89.73	89.82	88.14
	African American	6.64	5.28	4.45	5.96	6.10
	Hispanic	3.85	3.87	4.11	2.81	4.41
	Asian/Pacific Islander	1.05	1.41	1.03	1.05	0.68
	Am. Indian/Alaskan	0.35	0.35	0.34	0.35	0.68
	International			0.34		
	<b>Total</b>	<b>100</b>	<b>100</b>	<b>100</b>	<b>100</b>	<b>100</b>

Source: Institutional Effectiveness Database/CBM008

McLennan Community College 1997-98 Factbook

## MCC Faculty Profile - Highest Degree Earned

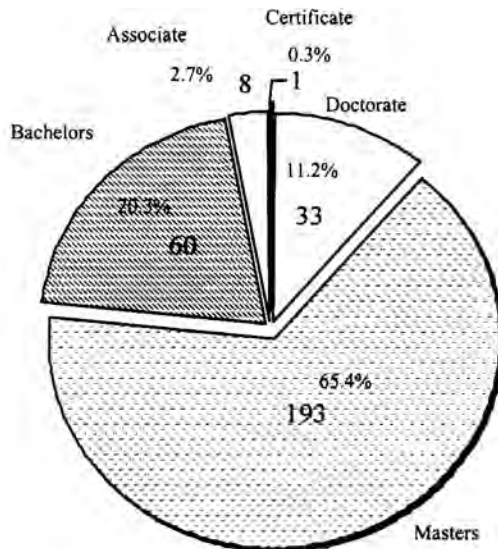
### Fall Semesters

Degree	1993	1994	1995	1996	1997
Doctorate	35	37	35	30	33
Masters	197	196	195	182	193
Bachelor's	52	51	50	60	60
Associate	0	0	7	11	8
Certificate or less	0	0	3		1
No Degree	2	0	2	2	0
<b>Total</b>	<b>286</b>	<b>284</b>	<b>292</b>	<b>285</b>	<b>295</b>

### Percent

Degree	1993	1994	1995	1996	1997
Doctorate	12.2%	13.0%	12.0%	10.5%	11.2%
Masters	68.9%	69.0%	66.8%	63.9%	65.4%
Bachelor's	18.2%	18.0%	17.1%	21.1%	20.3%
Associate	0.0%	0.0%	2.4%	3.9%	2.7%
Certificate or less	0.0%	0.0%	1.0%	0	0.3%
No Degree	0.7%	0.0%	0.7	0.7%	0

### Fall 1997 - Highest Degree Earned



Source: Institutional Effectiveness Database/CBM008

McLennan Community College 1997-98 Factbook



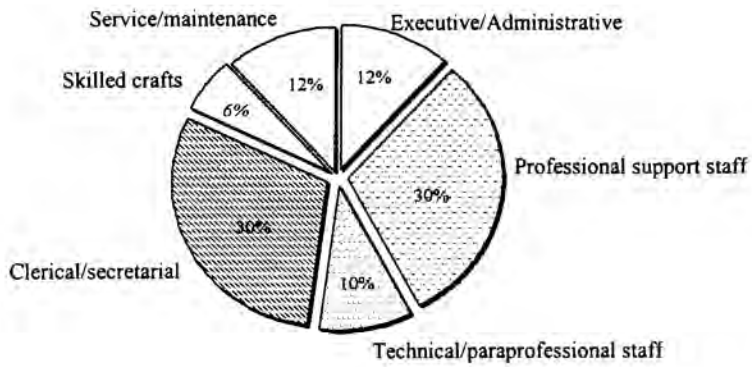
# SECTION VIII

## ADMINISTRATION AND STAFF

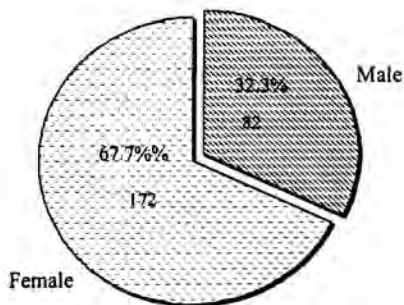
Administration and Classified Staff by Position .....	80
Administration and Classified Staff by Gender .....	80
Administration and Classified Staff by Ethnicity .....	80

# MCC Full-time Staff Profile

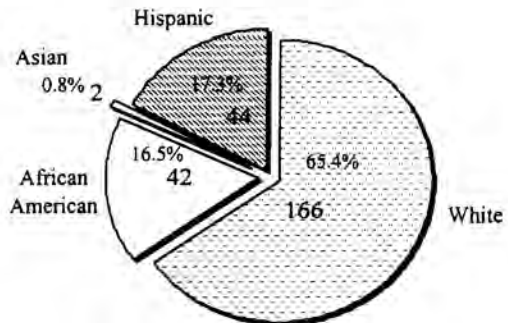
Fall 1997



Gender - Fall 1997



Ethnicity - Fall 1997



Source: IPEDS Fall 1997 Staff Survey

McLennan Community College 1997-98 Factbook

## MCC Full-time Staff Profile (Continued)

Fall 1997

	White		African American		Am. Indian/Alaskan Native		Asian or Pacific Islander		Hispanic		Total	
	Male	Female	Male	Female	Male	Female	Male	Female	Male	Female	Male	Female
	Executive/Administrative	14	11	3	0	0	0	0	0	1	1	18
Professional support staff	19	37	6	10	0	0	0	0	1	4	26	51
Technical and paraprof.	0	16	1	2	0	0	0	1	0	5	1	24
Clerical and Secretarial	2	48	1	9	0	0	0	0	2	15	5	72
Skilled crafts	10	0	0	0	0	0	1	0	4	0	15	0
Service/maintenance	8	1	5	5	0	0	0	0	4	7	17	13
<b>Total</b>	<b>166</b>		<b>42</b>		<b>0</b>		<b>2</b>		<b>44</b>		<b>254</b>	

<b>Percent</b>	White		African American		Am. Indian/Alaskan Native		Asian or Pacific Islander		Hispanic	
	Male	Female	Male	Female	Male	Female	Male	Female	Male	Female
Executive/Administrative	83.33%		10.00%		0.00%		0.00%		6.67%	
Professional support staff	72.73%		20.78%		0.00%		0.00%		6.49%	
Technical and paraprofession	64.00%		12.00%		0.00%		4.00%		20.00%	
Clerical and Secretarial	64.94%		12.99%		0.00%		0.00%		22.08%	
Skilled crafts	66.67%		0.00%		0.00%		6.67%		26.67%	
Service/maintenance	30.00%		33.33%		0.00%		0.00%		36.67%	

<b>Percent</b>	Male		Female	
	Male	Female	Male	Female
Executive/Administrative	60.0%	40.0%		
Professional support staff	33.8%	66.2%		
Technical and paraprofession	4.0%	96.0%		
Clerical and Secretarial	6.5%	93.5%		
Skilled crafts	100.0%	0.0%		
Service/maintenance	56.7%	43.3%		

<b>Part-time Staff</b>	
Technical and paraprofession	2
Clerical and secretarial	1
Service/Maintenance	6

Source: IPEDS Fall 1997 Staff Survey

McLennan Community College 1997-98 Factbook

# SECTION IX

## FINANCIAL INFORMATION

Income by Source .....	83
Expenditures by Source .....	85

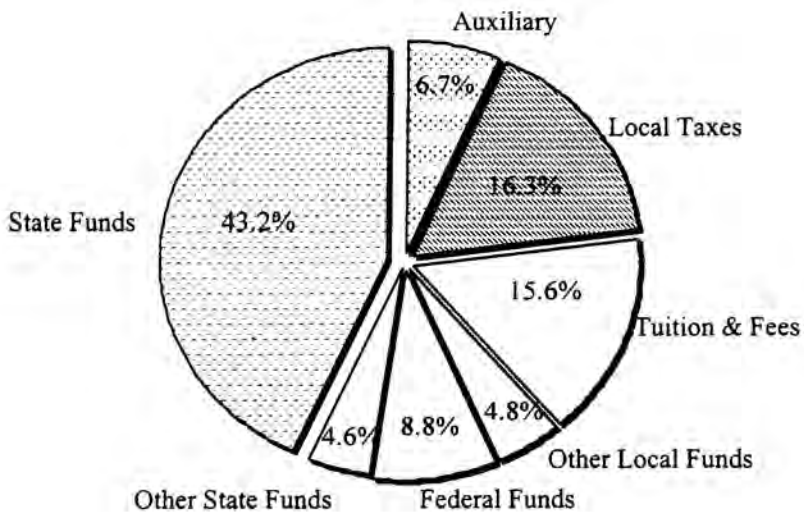
## MCC Financial Profile - Income (1997-98)

### Income (1997-98)

Revenue Source	Amount	%
Auxiliary	\$1,617,609.00	6.70%
Local Taxes	\$3,935,377.00	16.30%
Tuition and Fees	\$3,766,373.00	15.60%
Other Local Funds	\$1,158,884.00	4.80%
Federal Funds	\$2,124,620.00	8.80%
Other State Funds	\$1,110,597.00	4.60%
State Funds	\$10,429,956.00	43.20%

Operating Budget: \$24,143,416

### MCC 1997-98 Income



Source: MCC Business Services Database

McLennan Community College 1997-98 Factbook

## MCC Income - Historical Data

<b>*Fund Revenues</b>	<b>1992-93</b>	<b>1993-94</b>	<b>1994-95</b>	<b>1995-96</b>	<b>1996-97</b>
Tuition	\$2,476,720.00	\$2,363,266.00	\$2,484,486.00	\$2,738,128.00	\$2,856,344.00
General Fees	\$403,778.00	\$373,040.00	\$426,451.00	\$311,975.00	\$1,076,542.00
Student Service Fees	\$295,154.00	\$277,500.00	\$263,697.00	\$275,763.00	
Other Fees	\$222,852.00	\$675,389.00	\$643,401.00	\$932,491.00	\$555,362.00
Tuition Remissions and Exemptions			\$51,375.00	\$56,069.00	\$83,437.00
Federal Grants and Contracts		\$74,281.00	\$79,914.00	\$83,485.00	\$76,576.00
State Grants and Contracts (Includes TPEG)		\$2,399.00	\$2,183.00	\$1,076.00	
Local Grants and Contracts	\$2,715,843.00	\$335,372.00	\$312,983.00	\$151,224.00	\$39,283.00
Taxes for Current Operations		\$2,812,078.00	\$3,040,628.00	\$3,315,165.00	\$3,712,036.00
Sales and Services of Educational Activities		\$547,540.00	\$516,978.00	\$561,158.00	\$594,991.00
Sales and Services of Auxiliary Enterprises	\$1,479,360.00	\$1,420,421.00	\$1,433,419.00	\$1,577,350.00	\$1,660,237.00
Other Interest Income	\$96,399.00	\$86,504.00	\$60,563.00	\$107,713.00	\$164,703.00
Other Sources	\$910,932.00	\$100,564.00	\$77,734.00	\$80,310.00	\$60,560.00
State Appropriations - General Revenue	\$9,446,469.00	\$10,143,336.00	\$10,133,694.00	\$9,680,573.00	\$9,661,037.00
	<b>\$18,047,507</b>	<b>\$19,211,690</b>	<b>\$19,527,506</b>	<b>\$19,872,480</b>	<b>\$20,541,108</b>

### Percent

<b>*Fund Revenues</b>	<b>1992-93</b>	<b>1993-94</b>	<b>1994-95</b>	<b>1995-96</b>	<b>1996-97</b>
Tuition	13.72%	12.30%	12.72%	13.78%	13.91%
General Fees	2.24%	1.94%	2.18%	1.57%	5.24%
Student Service Fees	1.64%	1.44%	1.35%	1.39%	0.00%
Other Fees	1.23%	3.52%	3.29%	4.69%	2.70%
Tuition Remissions and Exemptions			0.26%	0.28%	0.41%
Federal Grants and Contracts		0.39%	0.41%	0.42%	0.37%
State Grants and Contracts (Includes TPEG)		0.01%	0.01%	0.01%	0.00%
Local Grants and Contracts	15.05%	1.75%	1.60%	0.76%	0.19%
Taxes for Current Operations		14.64%	15.57%	16.68%	18.07%
Sales and Services of Educational Activities		2.85%	2.65%	2.82%	2.90%
Sales and Services of Auxiliary Enterprises	8.20%	7.39%	7.34%	7.94%	8.08%
Other Interest Income	0.53%	0.45%	0.31%	0.54%	0.80%
Other Sources	5.05%	0.52%	0.40%	0.40%	0.29%
State Appropriations - General Revenue	52.34%	52.80%	51.89%	48.71%	47.03%

Source: State Auditor's Office Community College Database System

\* Excludes Restricted Funds

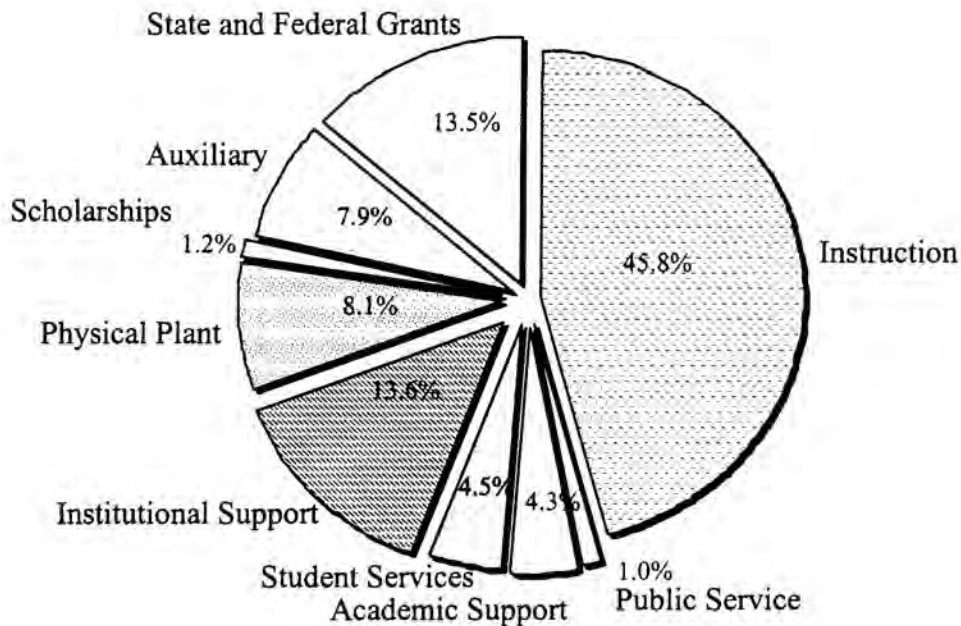
## MCC Financial Profile - Expenditures (1997-98)

---

Expenditures	Amount	%
Instruction	\$11,060,728.00	45.81%
Public Service	\$249,673.00	1.03%
Academic support	\$1,038,870.00	4.30%
Student Services	\$1,084,053.00	4.49%
Institutional Support	\$3,285,001.00	13.61%
Physical Plant	\$1,959,538.00	8.12%
Scholarships	\$286,345.00	1.19%
Auxiliary	\$1,916,797.00	7.94%
State & Federal Grants	\$3,258,554.00	13.50%
Mandatory Transfers	\$3,857.00	0.02%

Operating Budget: \$24,143,416

### MCC 1997-98 Expenditures



Source: MCC Business Services Database

## MCC Expenditures - Historical Data

---

<b>*Fund Expenditures</b>	<b>1992-93</b>	<b>1993-94</b>	<b>1994-95</b>	<b>1995-96</b>	<b>1996-97</b>
Instruction	\$9,653,817.00	\$10,179,930.00	\$9,945,910.00	\$10,017,008.00	\$10,431,293.00
Public Service	\$495,989.00	\$587,013.00	\$533,622.00	\$271,807.00	\$204,155.00
Academic Support	\$787,989.00	\$898,156.00	\$917,948.00	\$934,505.00	\$976,170.00
Student Services	\$1,060,835.00	\$1,015,591.00	\$1,082,776.00	\$1,036,329.00	\$1,076,592.00
Institutional Support	\$1,912,361.00	\$2,068,538.00	\$2,102,085.00	\$2,241,069.00	\$2,457,555.00
Operation and Maintenance of Plant	\$1,677,295.00	\$1,784,658.00	\$1,755,458.00	\$1,842,871.00	\$1,857,752.00
Scholarships, Fellowships and Grants	\$204,675.00	\$23,992.00	\$268,546.00	\$335,970.00	\$371,160.00
Auxiliary Enterprises	\$1,588,207.00	\$1,520,828.00	\$1,536,484.00	\$1,788,419.00	\$1,911,156.00
	<b>\$15,792,961</b>	<b>\$18,078,706</b>	<b>\$18,142,829</b>	<b>\$18,467,978</b>	<b>\$19,285,833</b>

<b>Percent</b>					
<b>*Fund Expenditures</b>	<b>1992-93</b>	<b>1993-94</b>	<b>1994-95</b>	<b>1995-96</b>	<b>1996-97</b>
Instruction	61.13%	56.31%	54.82%	54.24%	54.09%
Public Service	3.14%	3.25%	2.94%	1.47%	1.06%
Academic Support	4.99%	4.97%	5.06%	5.06%	5.06%
Student Services	6.72%	5.62%	5.97%	5.61%	5.58%
Institutional Support	12.11%	11.44%	11.59%	12.13%	12.74%
Operation and Maintenance of Plant	10.62%	9.87%	9.68%	9.98%	9.63%
Scholarships, Fellowships and Grants	1.30%	0.13%	1.48%	1.82%	1.92%
Auxiliary Enterprises	10.06%	8.41%	8.47%	9.68%	9.91%

Source: State Auditor's Office Community College Database System

\* Excludes Restricted Funds



# SECTION X

## COMPARATIVE DATA

Enrollment and Semester Hours .....	88
Faculty Headcount and Contact Hours .....	89
Technical and Academic Degrees .....	90
Financial Ratios .....	93
Legislative Appropriations .....	95

## Comparative Data - Enrollment (Peer Institutions)

College	1993	1994	1995	1996	1997	5 yr % change	1 yr % change
Tyler Junior College	7919	7891	7582	7669	8156	2.99%	6.35%
Laredo Community College	6716	6980	6887	7370	7421	10.50%	0.69%
Amarillo College	6640	6736	6548	6966	7265	9.41%	4.29%
Texas Southmost College	6039	6309	6550	6868	6826	13.03%	-0.61%
South Plains College	5763	5760	5652	5701	6217	7.88%	9.05%
Central Texas College	5821	6044	6360	5937	6040	3.76%	1.73%
Lee College	5507	5621	5752	5935	6002	8.99%	1.13%
McLennan Community College	5703	5540	5561	5318	5467	-4.14%	2.80%
Odessa College	4775	4445	4590	4845	5041	5.57%	4.05%
Trinity Valley Community College	4386	4278	4574	4497	4379	-0.16%	-2.62%
North Central Texas College	4071	4075	4094	4138	4231	3.93%	2.25%
Midland College	3815	3887	3759	3999	4228	10.83%	5.73%
Kilgore College	4564	4351	4159	4282	4106	-10.04%	-4.11%
Wharton County Junior College	3292	3395	3720	3958	4053	23.12%	2.40%
South Texas Community College*	1055	2334	3267	5424	6857		26.42%
<b>Peer Group Ranking</b>	<b>7</b>	<b>8</b>	<b>8</b>	<b>8</b>	<b>8</b>		

## Comparative Data - Semester Hours (Peer Institutions)

College	1993	1994	1995	1996	1997	5 yr % change	1 yr % change
Tyler Junior College	80,292	78,820	77,760	79,306	83,378	3.84%	5.13%
Laredo Community College	62,240	63,992	64,417	68,846	71,008	14.09%	3.14%
South Plains College	58,031	58,184	58,566	59,176	65,101	12.18%	10.01%
Central Texas College	55,541	58,799	59,562	58,346	64,241	15.66%	10.10%
Texas Southmost College	56,298	58,211	59,741	62,191	61,930	10.00%	-0.42%
Amarillo College	51,772	52,918	52,380	58,019	60,228	16.33%	3.81%
McLennan Community College	52,402	51,579	52,969	52,107	53,108	1.35%	1.92%
Lee College	43,761	44,671	46,048	48,198	48,626	11.12%	0.89%
Trinity Valley Community College	41,096	40,971	42,645	42,508	43,583	6.05%	2.53%
Kilgore College	45,978	43,714	41,749	44,890	42,945	-6.60%	-4.33%
Odessa College	42,650	38,905	38,882	42,070	42,852	0.47%	1.86%
Wharton County Junior College	34,862	36,437	38,872	41,527	42,115	20.80%	1.42%
North Central Texas College	32,801	33,888	33,829	34,761	35,914	9.49%	3.32%
Midland College	31,559	32,089	31,579	32,678	34,189	8.33%	4.62%
South Texas Community College	8,232	17,189	28,604	48,967	63,467		29.61%
<b>Peer Group Ranking</b>	<b>6</b>	<b>7</b>	<b>6</b>	<b>7</b>	<b>7</b>		

Source: CBM001/Prep System

McLennan Community College 1997-98 Factbook

## Comparative Data - Faculty Headcount (Peer Institutions)

College	1993	1994	1995	1996	1997	5 yr % change	1 yr % change
Laredo Community College	250	261	265	279	301	20.40%	7.89%
Central Texas College	302	340	332	350	384	27.15%	9.71%
Lee College	286	321	321	369	360	25.87%	-2.44%
Wharton County Junior College	184	196	205	224	217	17.93%	-3.13%
Odessa College	259	245	237	246	268	3.47%	8.94%
Amarillo College	294	326	332	346	355	20.75%	2.60%
Texas Southmost College	287	302	305	303	323	12.54%	6.60%
South Plains College	300	302	303	316	319	6.33%	0.95%
Midland College	221	219	214	222	230	4.07%	3.60%
Trinity Valley Community College	191	199	204	199	207	8.38%	4.02%
McLennan Community College	286	284	292	285	295	3.15%	3.51%
Tyler Junior College	432	410	406	427	416	-3.70%	-2.58%
Kilgore College	225	229	202	211	220	-2.22%	4.27%
North Central Texas College	214	238	221	226	213	-0.47%	-5.75%
South Texas Community College	101	151	171	319	381		2.09%
<b>Peer Group Ranking</b>	<b>6</b>	<b>7</b>	<b>7</b>	<b>7</b>	<b>8</b>		

## Comparative Data - Contact Hours (Peer Institutions)

College	1993	1994	1995	1996	1997	5 yr % change	1 yr % change
Texas Southmost College	1,068,368	1,136,592	1,148,800	1,187,888	1,188,624	11.26%	0.06%
Central Texas College	1,244,736	1,296,192	1,313,200	1,279,920	1,388,216	11.53%	8.46%
South Plains College	1,220,942	1,218,844	1,262,588	1,275,794	1,362,930	11.63%	6.83%
North Central Texas College	657,724	681,400	661,266	690,742	687,772	4.57%	-0.43%
Trinity Valley Community College	897,096	895,360	955,336	944,986	977,310	8.94%	3.42%
Tyler Junior College	1,735,520	1,688,472	1,672,884	1,708,616	1,791,804	3.24%	4.87%
Amarillo College	1,176,160	1,241,088	1,217,568	1,353,312	1,396,702	18.75%	3.21%
Wharton County Junior College	713,373	741,799	782,310	879,676	859,000	20.41%	-2.35%
Odessa College	918,832	829,189	840,875	894,420	905,719	-1.43%	1.26%
Laredo Community College	1,257,616	1,267,216	1,291,676	1,379,912	1,383,852	10.04%	0.29%
McLennan Community College	1,144,556	1,111,504	1,155,648	1,115,720	1,118,720	-2.26%	0.27%
Lee College	898,380	899,328	916,976	972,240	1,015,306	13.02%	4.43%
Midland College	696,760	704,928	677,051	717,536	733,600	5.29%	2.24%
Kilgore College	997,324	946,700	905,708	997,868	951,888	-4.56%	-4.61%
South Texas Community College	215,962	381,012	563,440	941,824	1,261,408		33.93%
<b>Peer Group Ranking</b>	<b>6</b>	<b>7</b>	<b>6</b>	<b>7</b>	<b>7</b>		

Source: CBM001/Prep System

McLennan Community College 1997-98 Factbook

## Comparative Data - Percentage of Fund Revenues Used for Instruction

*Note: Ratio represents percentage of total revenues (excluding auxiliary enterprises) used for instruction.*

Institution	FY 1993		FY 1994		FY 1995		FY 1996		FY 1997	
	%	Rank	%	Rank	%	Rank	%	Rank	%	Rank
McLennan Community College	49.67	9	50.26	6	48.95	6	48.54	4	48.88	6
North Central Texas Community College	46.05	17	50.04	8	47.94	9	46.66	10	47.79	8
Central Texas College District	50.64	6	49.64	9	46.56	14	48.13	7	47.58	10
Kilgore College	50.58	7	51.26	3	49.40	5	43.33	24	47.04	12
Amarillo College	42.45	32	46.02	23	46.13	15	45.56	15	46.75	14
South Plains College	43.53	28	52.95	1	55.04	1	44.44	18	46.12	16
Wharton County Junior College	48.37	14	45.42	24	45.82	16	45.74	14	45.38	18
Lee College	45.12	23	46.31	20	47.13	13	48.23	5	45.27	19
Laredo Community College	42.88	30	43.44	29	43.30	24	43.68	20	42.89	25
Midland College	42.92	29	44.52	27	44.79	17	43.46	23	42.23	27
Texas Southmost College	59.14	1	50.87	4	41.83	28	41.03	28	40.50	29
Tyler Junior College	39.79	36	37.73	38	35.65	43	36.44	41	39.73	32
Odessa College	44.18	26	46.16	22	38.35	37	37.20	37	36.86	39
Trinity Valley Community College	28.82	49	38.04	37	36.92	39	36.23	44	36.05	42
South Texas Community College			47.33	16	33.15	47	35.57	45	31.42	50

## Percentage of Fund Revenues Used for Institutional Support

*Note: Ratio represents percentage of total revenues (excluding auxiliary enterprises) used for instruction.*

Institution	FY 1993		FY 1994		FY 1995		FY 1996		FY 1997	
	%	Rank	%	Rank	%	Rank	%	Rank	%	Rank
Kilgore College	13.90	18	16.34	10	17.24	11	26.24	1	23.64	1
Texas Southmost College	3.95	49	12.10	24	21.46	3	17.47	9	16.58	10
Lee College	15.53	12	16.38	9	17.00	12	15.56	13	16.06	12
South Texas Community College			15.92	12	18.27	8	20.34	4	15.04	14
Amarillo College	12.60	21	13.25	21	13.04	21	13.75	20	14.59	18
Wharton County Junior College	11.23	28	13.33	20	10.30	38	11.21	35	12.69	23
North Central Texas Community College	17.17	7	11.95	25	13.65	18	11.93	31	12.56	25
Tyler Junior College	13.45	19	14.33	15	12.96	22	12.33	29	11.70	30
Laredo Community College	10.11	32	11.55	26	11.45	30	10.94	37	10.93	33
McLennan Community College	9.45	39	9.52	41	9.57	42	10.17	43	10.85	34
Central Texas College District	9.04	40	7.96	47	9.62	41	10.55	39	10.30	37
Midland College	12.71	20	13.35	19	10.94	32	11.59	33	9.78	40
Odessa College	9.03	41	13.54	18	16.28	13	14.62	15	9.58	43
South Plains College	7.19	46	7.16	48	7.46	47	5.05	50	7.69	47
Trinity Valley Community College	15.33	13	8.05	46	5.03	50	9.24	46	7.21	48

Source: State Auditor's Office Community College Database System

McLennan Community College 1997-98 Factbook

## Comparative Data - Percentage of Fund Revenues Used for Maintenance of Plant

*Note: Ratio represents percentage of total revenues (excluding auxiliary enterprises) used for instruction.*

Institution	FY 1993		FY 1994		FY 1995		FY 1996		FY 1997	
	%	Rank	%	Rank	%	Rank	%	Rank	%	Rank
Kilgore College	11.84	16	10.92	21	10.61	19	14.13	3	12.59	7
Midland College	11.97	15	13.21	9	12.04	12	14.73	2	12.24	9
Odessa College	12.95	7	11.75	16	10.22	23	11.98	13	11.68	14
Amarillo College	8.64	36	9.45	33	9.35	31	11.60	18	11.66	15
North Central Texas Community College	9.54	33	10.75	24	12.61	9	11.89	14	11.13	17
Wharton County Junior College	10.81	26	11.50	19	11.08	15	11.67	16	11.09	18
South Plains College	9.99	30	13.08	10	10.24	22	9.10	33	9.60	25
Lee College	11.75	19	11.82	15	10.11	25	10.04	26	9.53	27
Tyler Junior College	12.23	10	10.46	26	9.49	29	9.57	29	9.15	31
Trinity Valley Community College	6.27	45	7.09	45	9.11	34	7.74	42	8.54	35
Texas Southmost College	1.82	49	10.12	28	9.82	26	8.01	40	8.18	38
McLennan Community College	7.97	41	7.71	43	7.38	43	7.70	43	7.72	41
Laredo Community College	9.59	32	8.13	42	8.52	39	8.11	39	7.04	42
Central Texas College District	6.15	47	6.00	49	5.53	47	5.40	47	5.25	48
South Texas Community College			6.50	48	3.29	50	4.23	50	4.61	50

## Comparative Data - Average Appropriation Received per Full-time Student

*Note: Ratio represents percentage of total revenues (excluding auxiliary enterprises) used for instruction.*

Institution	FY 1993		FY 1994		FY 1995		FY 1996		FY 1997	
	%	Rank	%	Rank	%	Rank	%	Rank	%	Rank
Amarillo College	\$2,634.55	10	\$2,649.08	12	\$2,639.83	14	\$3,838.72	1	\$3,363.41	2
Kilgore College	\$2,538.23	12	\$2,917.16	7	\$3,015.61	5	\$3,012.37	6	\$2,769.76	9
Trinity Valley Community College	\$2,648.24	9	\$2,702.35	11	\$2,706.11	12	\$2,803.02	9	\$2,699.03	10
McLennan Community College	\$2,161.17	28	\$2,437.72	20	\$2,495.37	21	\$2,342.26	26	\$2,364.42	18
Lee College	\$2,480.52	13	\$2,588.23	16	\$2,475.50	22	\$2,416.61	20	\$2,335.46	20
Central Texas College District	\$2,259.24	23	\$2,132.61	36	\$2,104.08	37	\$2,343.80	25	\$2,325.35	21
South Plains College	\$2,108.08	31	\$2,333.23	29	\$2,274.73	30	\$2,364.57	22	\$2,278.27	24
Laredo Community College	\$2,020.74	34	\$2,148.34	35	\$2,124.01	35	\$2,193.96	35	\$2,253.15	25
Odessa College	\$2,456.13	14	\$2,567.59	17	\$2,816.47	8	\$2,393.86	21	\$2,227.68	26
Midland College	\$2,293.44	22	\$2,426.60	23	\$2,424.01	23	\$2,268.26	29	\$2,122.88	34
Texas Southmost College	\$1,956.41	39	\$2,450.23	19	\$2,308.32	27	\$2,158.06	36	\$2,080.84	36
Tyler Junior College	\$2,137.38	29	\$2,351.54	27	\$2,337.62	26	\$2,125.36	38	\$2,059.87	40
Wharton County Junior College	\$2,176.08	27	\$2,222.96	31	\$2,131.73	34	\$2,022.17	44	\$1,923.33	45
North Central Texas Community College	\$1,615.89	48	\$1,954.65	44	\$1,862.77	45	\$1,987.50	46	\$1,889.04	46
South Texas Community College			\$3,377.75	2	\$2,896.61	6	\$2,074.69	41	\$1,283.86	50

Source: State Auditor's Office Community College Database System

McLennan Community College 1997-98 Factbook

## Comparative Data - Full-time Equivalent Student per Full-time Faculty

Institution	FY 1993		FY 1994		FY 1995		FY 1996		FY 1997	
	Ratio	Rank	Ratio	Rank	Ratio	Rank	Ratio	Rank	Ratio	Rank
Central Texas College District	29.26	2	31.23	1	29.07	2	30.40	1	27.63	2
Texas Southmost College	19.97	34	22.67	13	24.54	7	24.85	5	25.97	4
Trinity Valley Community College	25.84	6	23.63	7	23.22	10	23.19	11	23.35	7
South Texas Community College			18.17	47	32.21	1	23.25	10	22.78	10
Laredo Community College	23.52	10	24.60	6	24.64	6	24.35	7	22.66	12
Wharton County Junior College	20.00	33	20.56	29	20.42	24	21.05	20	21.29	16
Tyler Junior College	21.91	16	21.64	19	21.46	17	20.81	22	20.78	21
Midland College	20.01	32	18.37	45	18.85	38	19.04	37	20.65	22
Amarillo College	19.33	40	19.05	41	21.18	20	21.33	16	20.51	24
McLennan Community College	21.49	23	19.47	38	19.38	33	19.86	29	20.45	25
North Central Texas Community College	20.08	30	19.65	35	17.84	44	18.24	44	19.71	30
Odessa College	18.54	45	18.52	44	17.67	46	18.93	38	19.17	32
South Plains College	18.47	46	17.21	49	18.22	41	18.75	39	18.92	34
Kilgore College	21.30	25	20.14	32	19.40	32	19.35	35	18.68	37
Lee College	18.43	47	18.35	46	17.68	45	18.28	43	17.96	43

## Comparative Data - Instruction Expenditures per Full-time Equivalent Student

Institution	FY 1993		FY 1994		FY 1995		FY 1996		FY 1997	
	Ratio	Rank	Ratio	Rank	Ratio	Rank	Ratio	Rank	Ratio	Rank
Central Texas College District	\$6,202.18	1	\$5,440.25	1	\$5,351.73	1	\$5,796.19	1	\$6,013.48	1
Amarillo College	\$3,038.28	9	\$3,304.40	5	\$3,326.77	7	\$4,042.43	2	\$3,707.68	3
Midland College	\$2,800.44	14	\$3,145.75	9	\$3,304.98	10	\$3,298.18	10	\$3,465.59	5
Lee College	\$3,062.27	7	\$3,265.82	6	\$3,313.52	9	\$3,399.15	7	\$3,262.81	10
Kilgore College	\$2,670.66	17	\$3,080.76	10	\$3,157.25	11	\$3,058.94	14	\$3,232.73	12
Laredo Community College	\$2,589.41	18	\$2,747.73	20	\$2,800.81	19	\$2,979.85	17	\$3,212.59	14
McLennan Community College	\$2,390.36	23	\$3,033.83	12	\$3,073.34	15	\$2,992.50	16	\$3,032.53	16
Odessa College	\$3,514.03	3	\$3,600.28	2	\$3,525.86	3	\$3,214.98	13	\$3,028.03	17
Wharton County Junior College	\$2,962.06	10	\$2,873.60	17	\$3,060.17	16	\$2,949.22	18	\$2,839.57	24
Trinity Valley Community College	\$2,121.51	33	\$2,801.52	18	\$2,794.16	20	\$2,773.70	21	\$2,767.82	26
South Plains College	\$2,328.46	29	\$3,065.63	11	\$3,141.78	12	\$2,582.59	31	\$2,723.99	28
Tyler Junior College	\$1,966.98	41	\$2,112.21	41	\$2,184.94	39	\$2,172.30	44	\$2,379.14	38
North Central Texas Community College	\$1,647.12	48	\$2,065.46	44	\$1,997.69	47	\$2,032.48	47	\$2,121.71	46
Texas Southmost College	\$2,842.52	13	\$2,693.25	22	\$2,114.69	43	\$2,033.93	46	\$2,085.60	47
South Texas Community College			\$2,367.91	34	\$1,572.68	49	\$1,846.18	48	\$1,968.66	48

Source: State Auditor's Office Community College Database System

McLennan Community College 1997-98 Factbook

## Comparative Data - Legislative Appropriations

House Bill 1

	FY 1998	FY 1999
Texas Higher Education Coordinating Board Administration and Coordination	\$11,951,504	\$11,951,504
Federal Grant Programs	\$49,703,239	\$49,703,239
Other Trusteed Funds(1)	\$197,285,348	\$138,619,664
<b>Subtotal</b>	<b>\$258,940,091</b>	<b>\$200,274,407</b>

### Public Community Colleges

Alamo Community College District	\$56,419,122	\$58,548,791
Alvin Community College	\$8,727,666	\$9,060,679
Amarillo College	\$19,669,754	\$20,309,814
Angelina College	\$7,540,296	\$7,830,226
Austin Community College	\$37,057,541	\$38,480,205
Bee County College	\$7,134,070	\$7,405,762
Blinn College	\$16,252,504	\$16,863,181
Brazosport College	\$5,502,468	\$5,712,547
Central Texas College District	\$18,673,315	\$19,385,071
Cisco Junior College	\$4,365,808	\$4,531,662
Clarendon College	\$2,239,230	
College of the Mainland	\$7,550,670	\$7,832,303
Collin County Community College District	\$16,550,481	\$17,180,694
Dallas County Community College District	\$77,266,220	\$80,188,690
Del Mar College	\$21,275,646	\$22,077,890
El Paso County Community College District	\$32,845,584	\$34,091,769
Frank Phillips College	\$2,299,087	\$2,304,569
Galveston College	\$4,716,540	\$4,895,653
Grayson County College	\$6,541,124	\$6,785,883
Hill College	\$5,529,878	\$5,716,375
Houston Community College System	\$62,491,831	\$64,890,127
Howard County Junior College District	\$10,045,066	\$8,549,810
Kilgore College	\$10,536,256	\$10,930,222
Laredo Community College	\$13,971,883	\$14,487,119
Lee College	\$12,176,918	\$12,639,933
McLennan Community College	\$11,740,531	\$12,180,673
Midland College	\$7,459,344	\$7,725,014
Navarro College	\$7,304,617	\$7,585,659
North Central Texas Community College District	\$5,766,257	\$5,986,396
Northeast Texas Community College	\$3,925,291	\$3,950,129
North Harris Montgomery Community College District	\$31,286,287	\$32,474,177
Odessa College	\$9,324,631	\$9,674,036
Panola College	\$3,718,644	\$3,858,996
Paris Junior College	\$6,575,814	\$6,825,396
Ranger College	\$2,264,531	\$2,269,322

McLennan Community College State Ranking

FY 1998 - 14

FY 1999 - 14

Source: The Texas Higher Education Coordinating Board

McLennan Community College 1997-98 Factbook

## Comparative Data - Legislative Appropriations (Continued)

*House Bill 1*

	<b>FY 1998</b>	<b>FY 1999</b>
San Jacinto College District	\$31,771,244	\$32,970,303
South Plains College	\$11,866,493	\$12,310,299
South Texas Community College	\$9,079,264	\$9,431,377
Southwest Texas Junior College	\$5,861,781	\$6,083,893
Tarrant County Junior College District	\$37,173,391	\$38,560,239
Temple College	\$4,986,080	\$5,172,639
Texarkana College	\$8,905,750	\$9,242,795
Texas Southmost College	\$11,404,971	\$11,837,547
Trinity Valley Community College	\$10,275,328	\$10,671,604
Tyler Junior College	\$15,303,624	\$15,879,819
Vernon Regional Junior College	\$4,256,829	\$4,417,714
Victoria College, The	\$7,203,925	\$7,475,655
Weatherford College	\$4,715,373	\$4,893,904
Western Texas College	\$2,698,890	\$2,799,439
Wharton County Junior College	\$8,040,381	\$8,343,763
<b>Subtotal</b>	<b>\$730,288,229</b>	<b>\$755,563,277</b>
 <b>Texas State Technical College System</b>		
System Administration	\$385,088	\$385,332
Texas State Technical College - Harlingen	\$14,916,466	\$15,253,075
Texas State Technical College - Sweetwater	\$8,225,607	\$8,450,070
Texas State Technical College - Waco	\$26,502,531	\$27,189,634
<b>Subtotal</b>	<b>\$50,029,692</b>	<b>\$51,278,111</b>

*Source: The Texas Higher Education Coordinating Board*

*McLennan Community College 1997-98 Factbook*



## Useful Websites

### Population Statistics

Texas Population Statistics (Texas Data Center) - <http://www.txsd.c.edu/>  
U.S. Census Bureau – [www.census.gov/mp/www/index2.html](http://www.census.gov/mp/www/index2.html)

### Data on Higher Education in Texas

List of websites for Texas Community Colleges – [www.sp.utoledo.edu/tx2yr.html](http://www.sp.utoledo.edu/tx2yr.html)  
Texas Higher Education Coordinating Board – [www.thecb.state.tx.us/](http://www.thecb.state.tx.us/)  
Statistical Report 1997 (Student enrollment, Faculty data)  
[www.thecb.state.tx.us/divisions/grpi/stats97/statmain.htm](http://www.thecb.state.tx.us/divisions/grpi/stats97/statmain.htm)  
Statewide Factbook 1997 (Remediation, Persistence, Graduation rates)  
[www.thecb.state.tx.us/divisions/ctc/ie/ctcsf/ctcsf.htm](http://www.thecb.state.tx.us/divisions/ctc/ie/ctcsf/ctcsf.htm)

### Literature Searchers

ERIC Search Interface (1989-1997) –  
<http://ericir.syr.edu/plweb/cgi/fastweb?searchform+ericdb>  
National Center for Education Statistics – <http://nces.ed.gov/>

If you have any questions please contact the following:

Paul Illich  
McLennan Community College  
1400 College Drive  
Waco, TX 76708  
(254) 299-8636  
[pai@mcc.cc.tx.us](mailto:pai@mcc.cc.tx.us)

Cathy Hagan  
(254) 299-8619  
[cfh@mcc.cc.tx.us](mailto:cfh@mcc.cc.tx.us)

Glenna Pritchard  
(254) 299-8642  
[gjp@mcc.cc.tx.us](mailto:gjp@mcc.cc.tx.us)