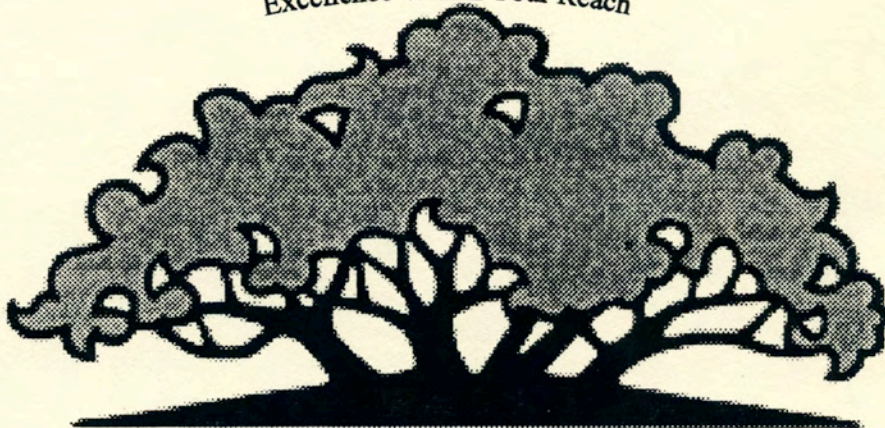


# McLennan Community College Fact Book: 1994-1995

*Excellence Within Your Reach*



Office of Institutional Effectiveness

## Table of Contents

List of Figures .....	3
Preface .....	4
Purpose .....	4
Fact Book Features .....	4
McLennan Community College .....	5
Enrollment and Student Data .....	11
Classification of Students .....	14
Credit Enrollment by Ethnicity .....	15
Enrollment by Gender .....	19
Age by Ethnicity by Gender--Fall 1994 .....	20
Part Time and Full Time Enrollment Age Ranges .....	22
Part Time v. Full Time Enrollment .....	23
Counties Served By MCC .....	26
Enrollment By Major .....	27
Contact Hours and Seat Counts .....	32
Key to Department Abbreviations .....	34
Selected Characteristics of Fall 1994 Students .....	37
Financial Aid .....	42
Financial Aid Awarded by Ethnicity and Gender --Academic Years 1992-1993 and 1993-1994 .....	45
Assessment .....	46
TASP Test Results .....	51
Student Outcomes .....	52
Degree Received By Ethnicity .....	53
Automated Student Follow-up Study .....	54
Receiving Institutions for MCC Students .....	57
Course Enrollment completed with a "C" or Higher .....	59
Students Achieving a GPA of 2.0 or Higher By Term .....	60
Cumulative GPA Analysis .....	61

†See List of Figures for page numbers of graphs and additional information.

## List of Figures

<b>Figure 1.</b> MCC fall semester enrollment growth. . . . .	12
<b>Figure 2.</b> Comparison of class enrollment figures for ten fall semesters. . . . .	13
<b>Figure 3.</b> Minority enrollment growth. . . . .	16
<b>Figure 4.</b> A comparison of selected minority populations. . . . .	17
<b>Figure 5.</b> Number of students by gender. . . . .	18
<b>Figure 6.</b> Number of students who take 12 or more hours by age range. . . . .	21
<b>Figure 7.</b> Number of students who take less than 12 hours by age range . . . . .	21
<b>Figure 8.</b> Comparison of total full time and total part time enrollment. . . . .	23
<b>Figure 9.</b> Distribution of students by number of hours taken in 1993. . . . .	24
<b>Figure 10.</b> Distribution of students by number of hours taken in 1994. . . . .	24
<b>Figure 11.</b> Texas counties outside of McLennan County, listed as home to MCC students. . . . .	25
<b>Figure 12.</b> Total contact hours. . . . .	36
<b>Figure 13.</b> Disadvantaged status of MCC students--fall 1993. . . . .	38
<b>Figure 14.</b> Disadvantaged status of MCC students--fall 1994. . . . .	38
<b>Figure 15.</b> Employment status survey results of 2,666 students--fall 1994. . . . .	39
<b>Figure 16.</b> Employment status survey results of 2,445 students. . . . .	39
<b>Figure 17.</b> Students' expected length of stay at MCC--1993, based on a survey of 2,445 students. . . . . .	40
<b>Figure 18.</b> Students' expected length of stay at MCC--1994, based on a survey of 2,666 students. . . . . .	40
<b>Figure 19.</b> Marital status of students, based on survey of 2,445 students. . . . .	41
<b>Figure 20.</b> Marital status of students, based on survey of 2,445 students. . . . .	41
<b>Figure 21.</b> Financial aid classified by type with total dollar amounts awarded. . . . .	43
<b>Figure 22.</b> Financial aid classified by type with total dollar amounts awarded--1993. . . . .	43
<b>Figure 23.</b> Financial aid awarded by ethnic group with total amount awarded. . . . .	44
<b>Figure 24.</b> Financial aid awarded by ethnic group with total amount awarded. . . . .	44
<b>Figure 25.</b> MCC Placement Test -- Pass/fail percentages for writing, reading, and math. . . . .	47
<b>Figure 26.</b> Students passing MCC placement test --1990 to 1994. . . . .	48
<b>Figure 27.</b> MCC Placement Test scores -- reading and math. . . . .	48
<b>Figure 28.</b> MCC Placement Test Results for fall 1994. . . . .	49
<b>Figure 29.</b> MCC Placement Test Results for fall 1993. . . . .	49
<b>Figure 30.</b> Average TASP scores by year and by subject. . . . .	50
<b>Figure 31.</b> First time performance of MCC students on TASP through 12/1/1994. . . . .	50
<b>Figure 32.</b> First time performance of MCC students on TASP test by subject. . . . .	51

## Preface

### Purpose:

The purpose of this document is to provide a broad range of information about McLennan Community College, focusing on students. It is hoped that the data snapshots of the College will answer frequently asked questions, raise new questions that require answers, and facilitate decision making. Information in this document is based on the best available data.

### Fact Book Features:

	Pages
Organizational charts .....	6-10
Enrollment studies .....	12-22
Contact hour information .....	33-37
Financial aid data .....	43-46
MCC Placement Test and TASP test information .....	47-51
Automated Student Follow-up study .....	54-56
Transfer studies .....	61-62

---

### Office of Institutional Effectiveness Personnel:

David England, Vice President, Institutional Effectiveness

Cathy Hagan, Executive Secretary

Chris Lanham, Director of Technical Program Evaluation and Development

Hansel Burley, Research Associate

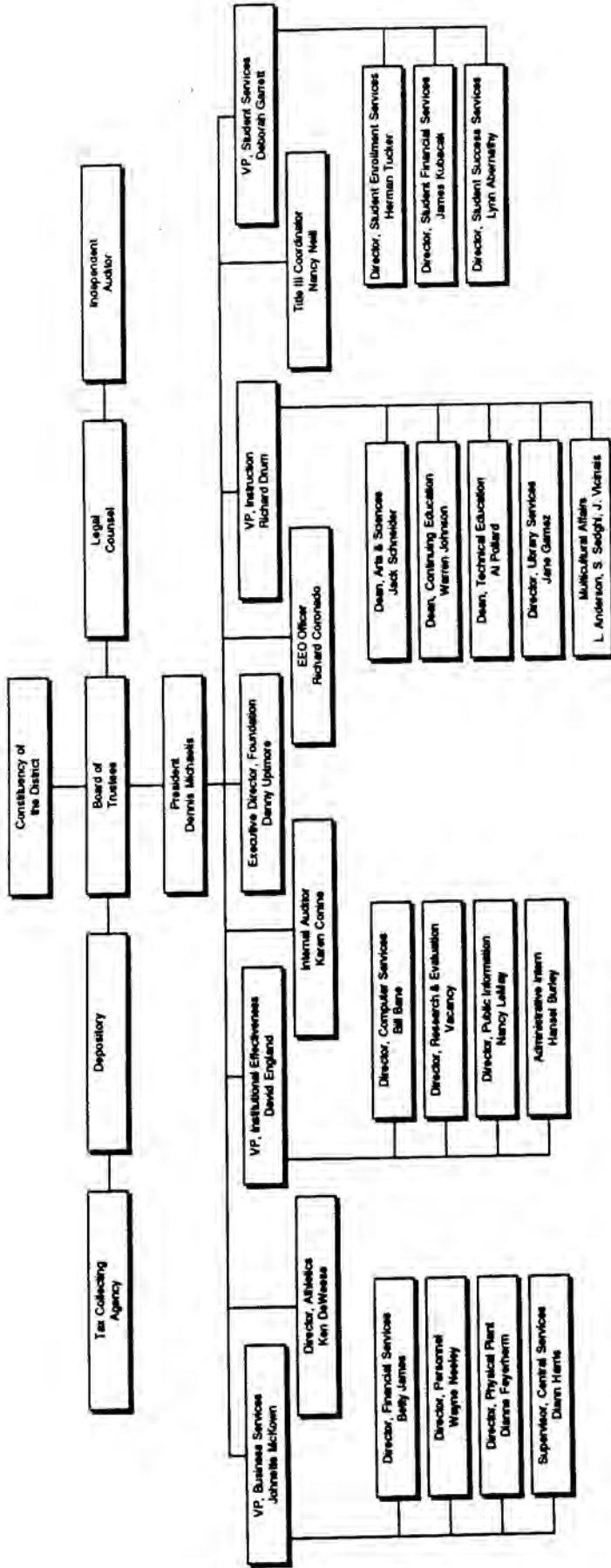


**McLennan Community College:**

Located in the heart of Central Texas and near the confluence of the Bosque and Brazos Rivers, MCC is a comprehensive public, community college which offers two-year parallel programs; one- and two-year occupational programs; and a wide-range of continuing education opportunities, serving citizens, businesses, and public agencies of McLennan County and surrounding counties.

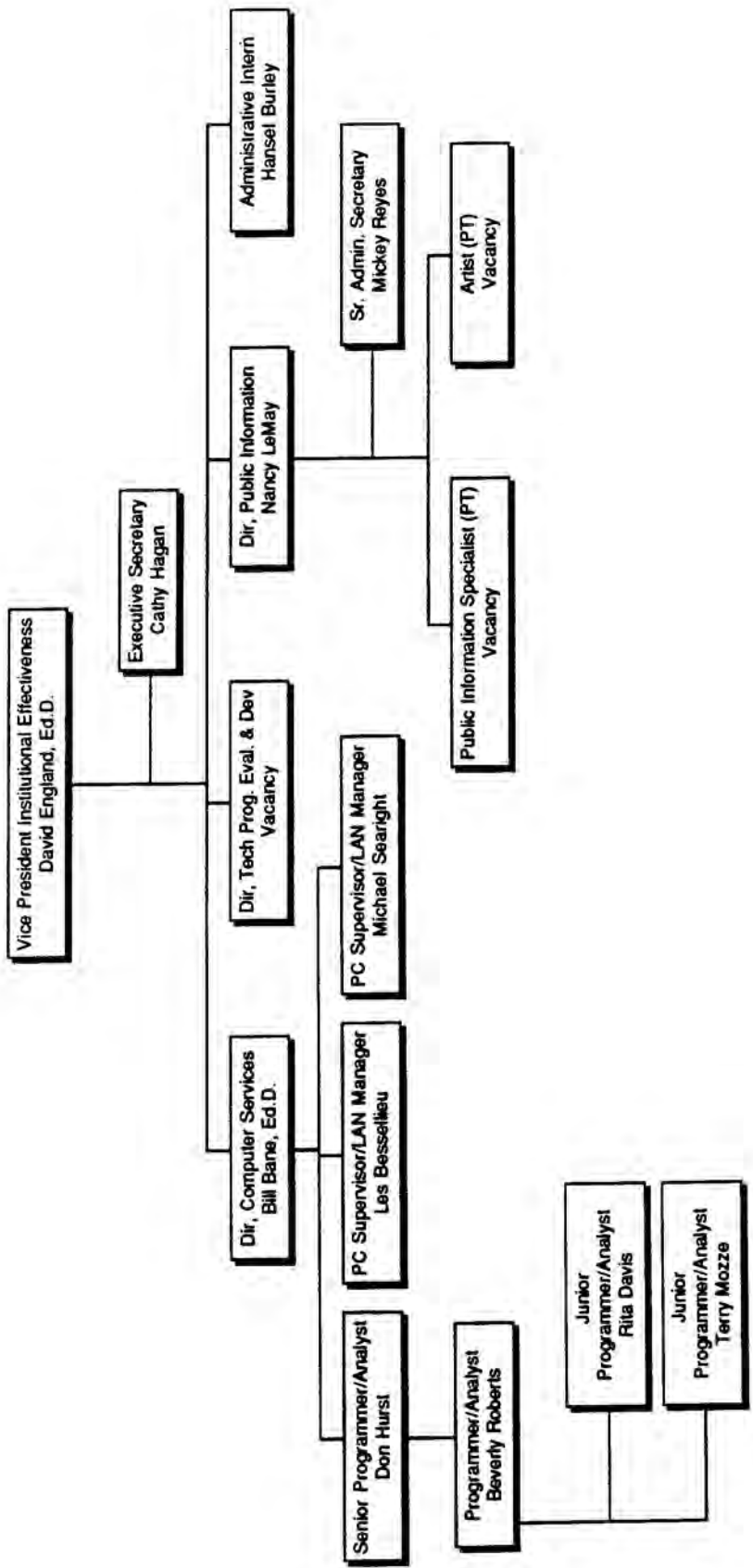
MCC is committed to excellence while serving a diverse and dynamic community. This excellence is reflected by the curriculum that consists of freshman and sophomore courses in arts and sciences and vocational and technical programs taught with cutting edge technology. Combined with superior teaching, the results are successful transfers to senior institutions and successful graduates in the business world. MCC is committed to keeping its first-rate programs "within reach" of all citizens by keeping tuition low, by having various satellite instruction sites, and by developing a comprehensive developmental studies program that makes the college curriculum accessible to anyone.

# McLennan Community College Organizational Chart



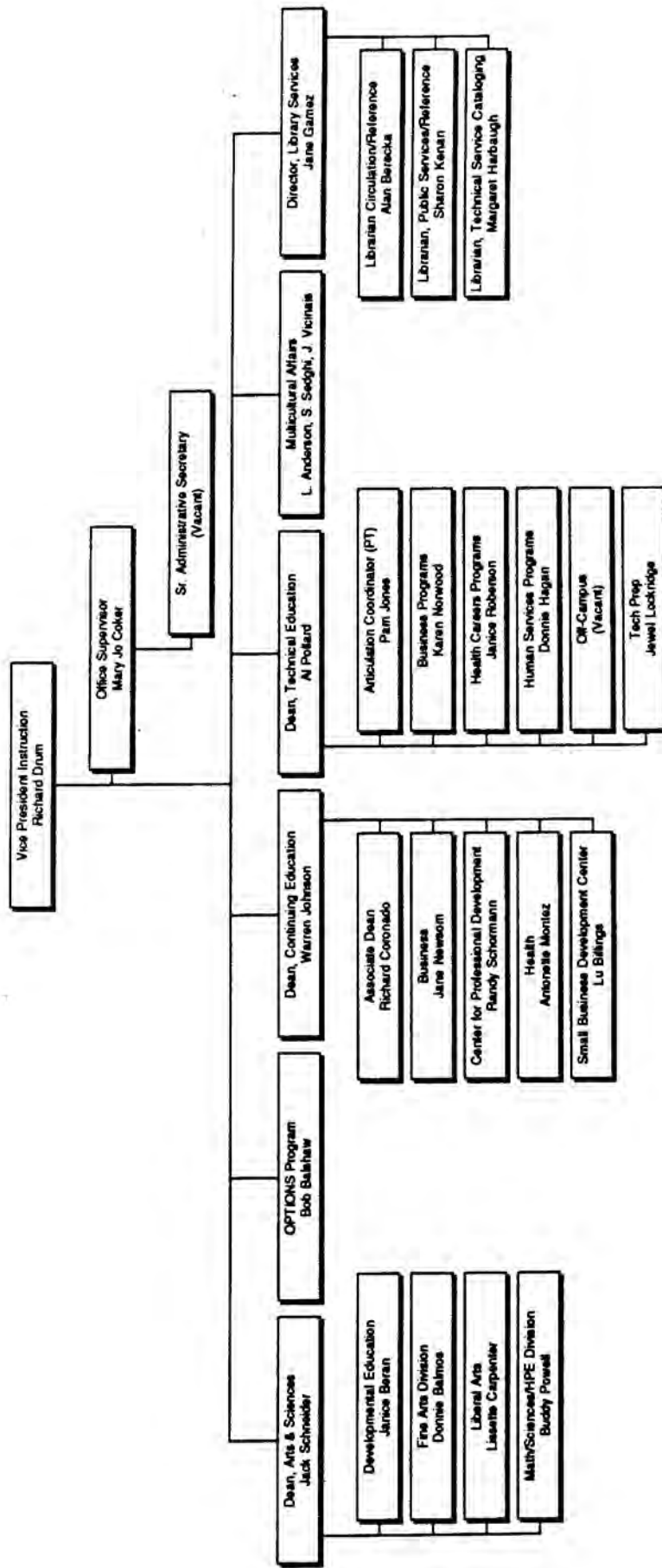


# Institutional Effectiveness Organization Chart

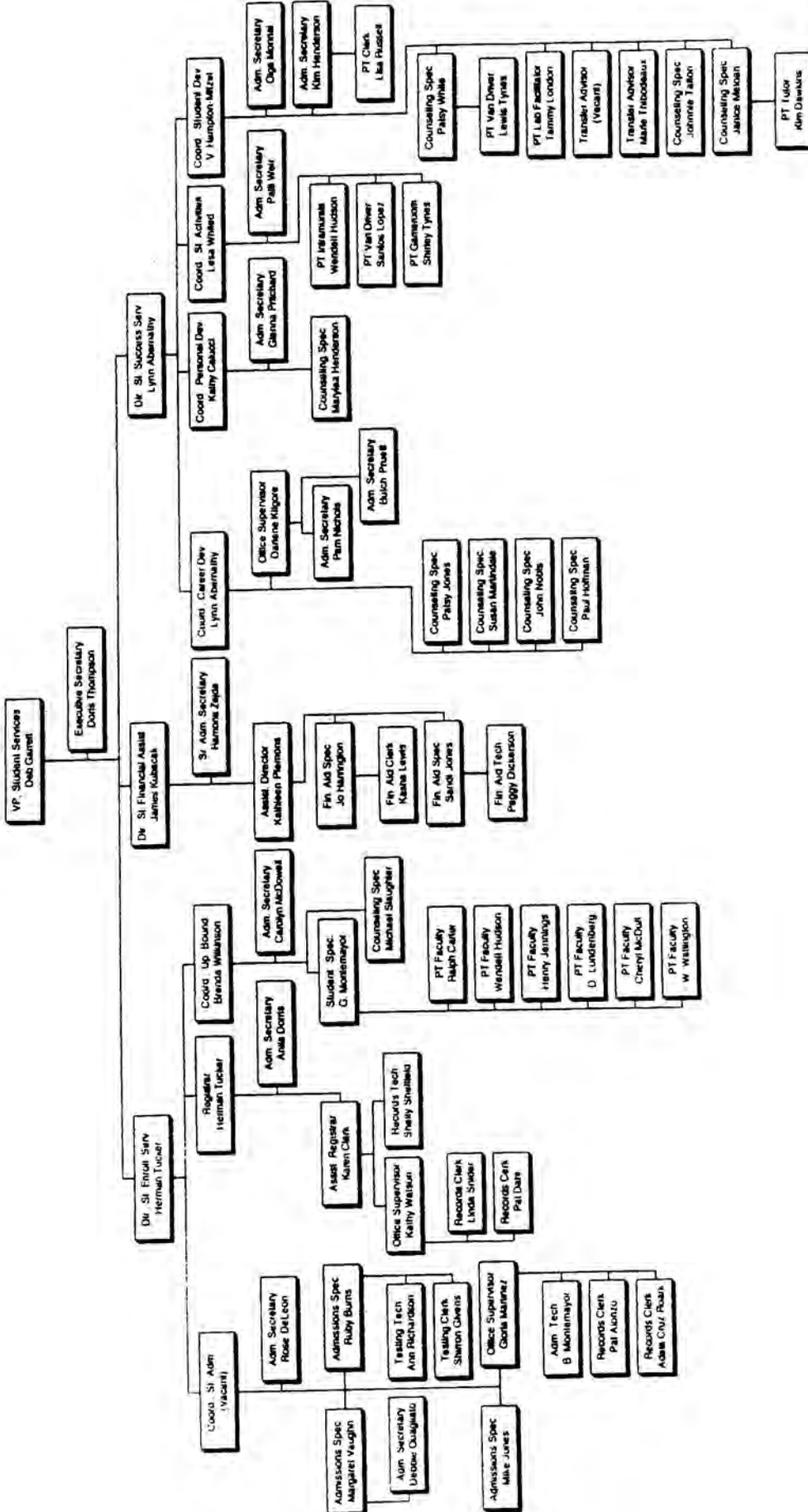




# Instruction Organizational Chart



# STUDENT SERVICES



# Enrollment and Student Data



# MCC Fall Enrollment

1985-1994

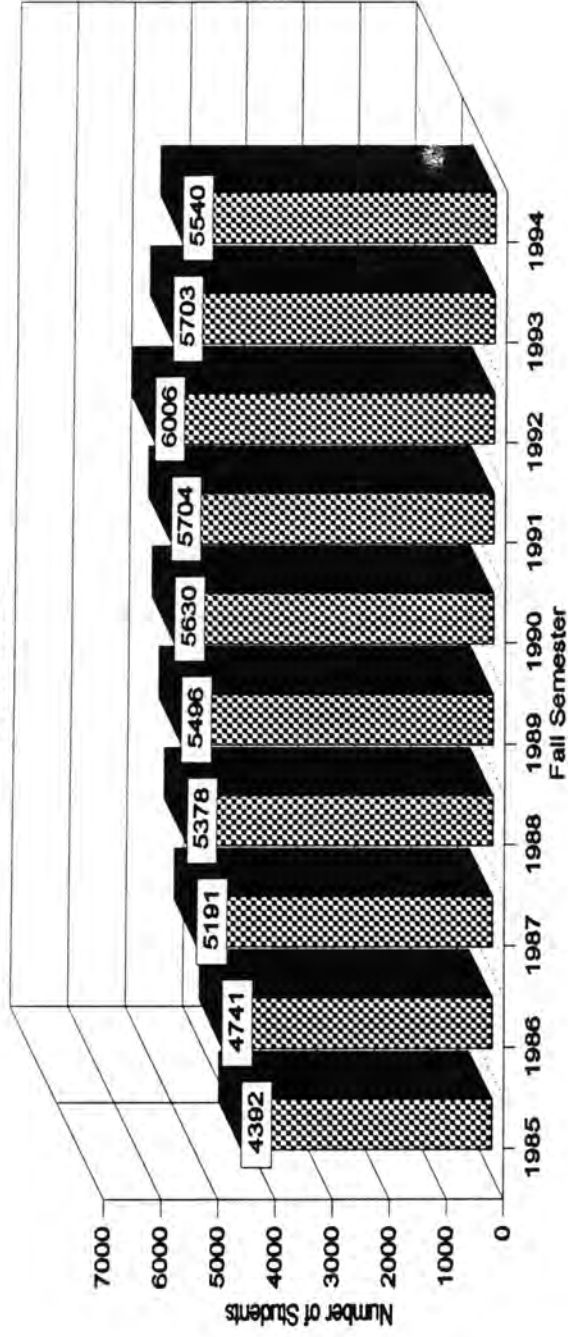


Figure 1. MCC fall semester enrollment growth.

# Students by Classification

1985-1994

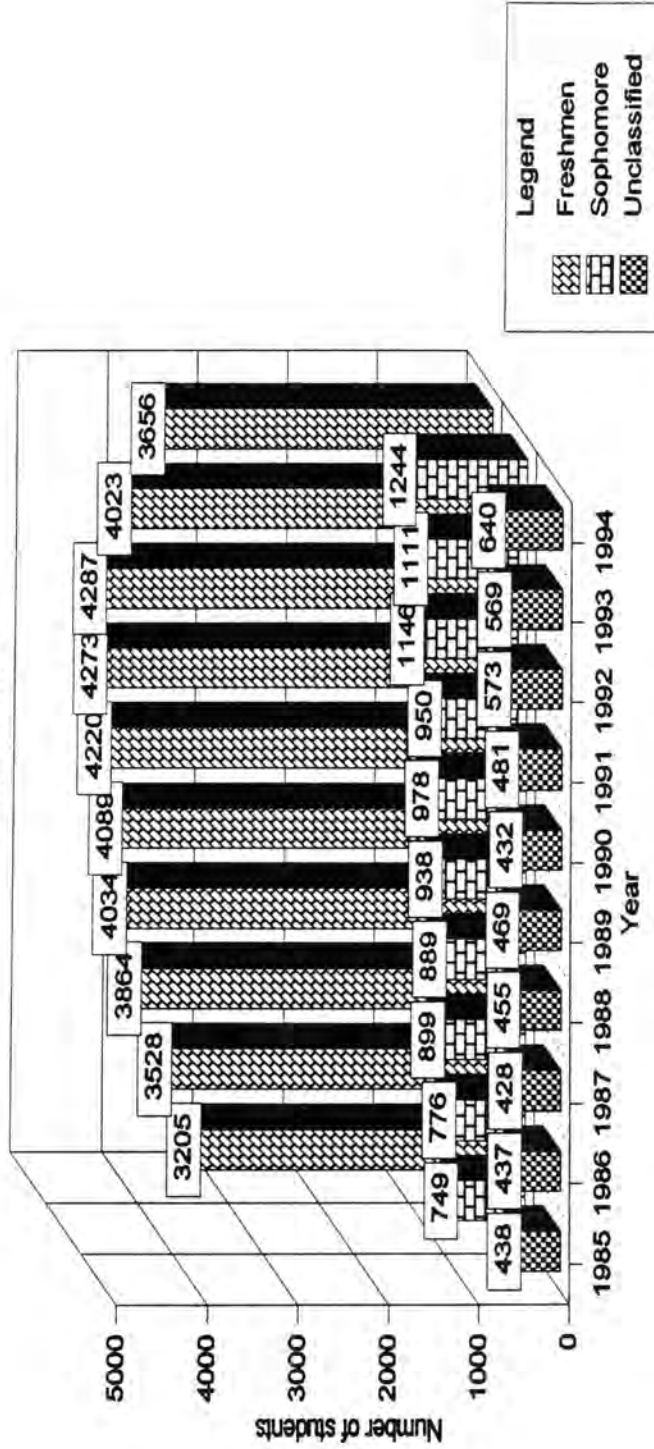


Figure 2. Comparison of class enrollment figures for ten fall semesters.

Classification of Students						
	Freshmen		Sophomore		Unclassified	
	No.	%	No.	%	No.	%
1985	3205	73.00	749	17.10	438	10.00
1986	3528	74.40	776	16.40	437	9.20
1987	3864	74.40	899	17.30	428	8.20
1988	4034	75.00	889	16.50	455	8.50
1989	4089	74.40	938	17.10	469	8.50
1990	4220	75.00	978	17.40	432	7.70
1991	4273	74.90	950	16.70	481	8.40
1992	4287	71.40	1146	19.10	573	9.50
1993	4023	70.50	1111	19.50	569	10.00
1994	3656	66.00	1244	22.50	640	11.50

Credit Enrollment by Ethnicity										
	White	African American	Hispanic	Asian	American Indian	Non-Resident Alien				
1985	3463	621	263	25	5	15	0.1	0.6	5	0.3
1986	3743	653	277	49	5	14	0.1	1	5	0.3
1987	4156	670	299	43	7	16	0.1	0.8	7	0.3
1988	4258	719	344	41	6	10	0.1	0.8	6	0.2
1989	4314	726	379	40	17	20	0.3	0.7	17	0.4
1990	4448	709	380	49	10	34	0.2	0.9	10	0.6
1991	4427	739	434	60	15	29	0.3	1.1	15	0.5
1992	4570	820	496	70	23	27	0.4	1.2	23	0.4
1993	4341	743	496	70	19	34	0.3	1.2	19	0.6
1994	4109	750	537	74	29	41	0.5	1.3	29	0.7

# Credit Enrollment by Ethnicity

1985-1994

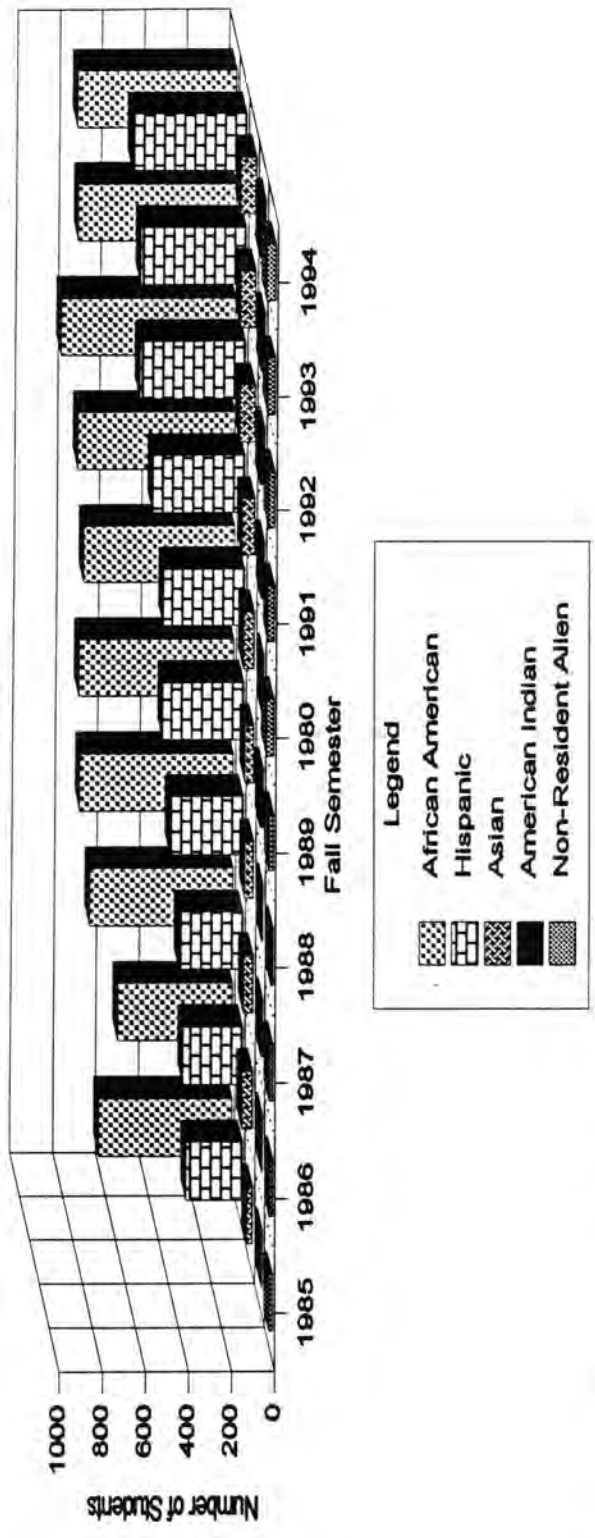


Figure 3. Minority enrollment growth.



# Comparison of Minority Populations

1985v. 1994

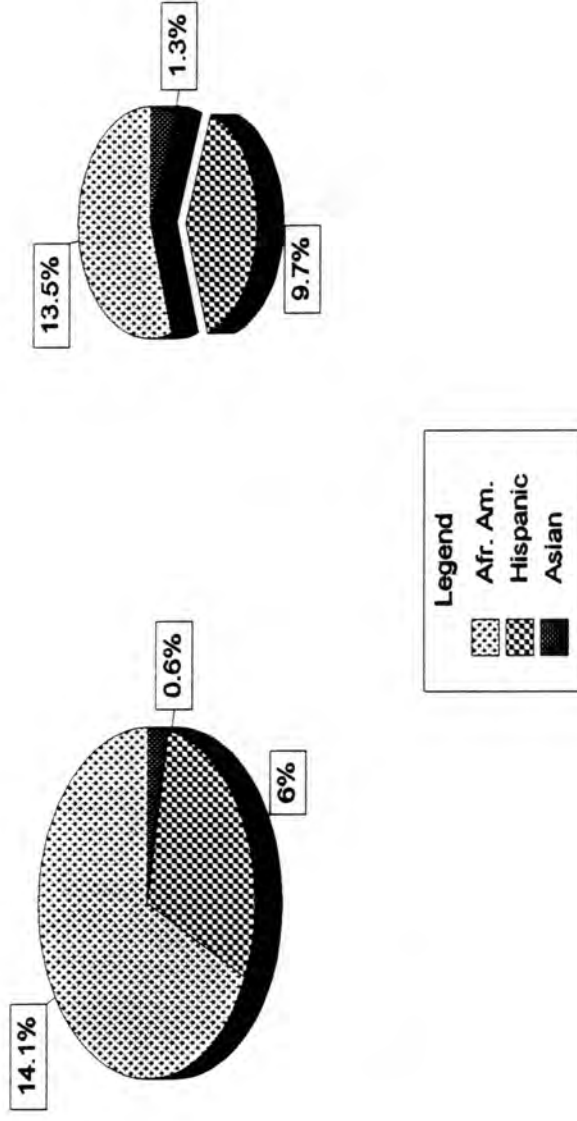


Figure 4. A comparison of selected minority populations.

# Enrollment By Gender

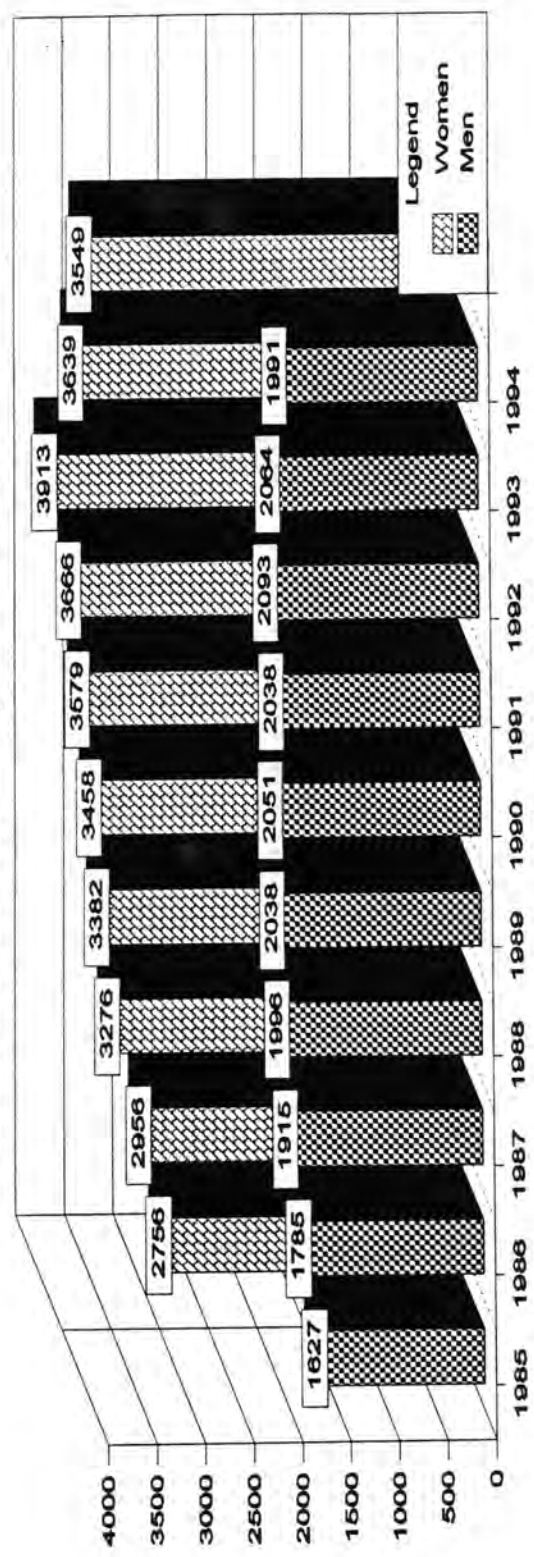


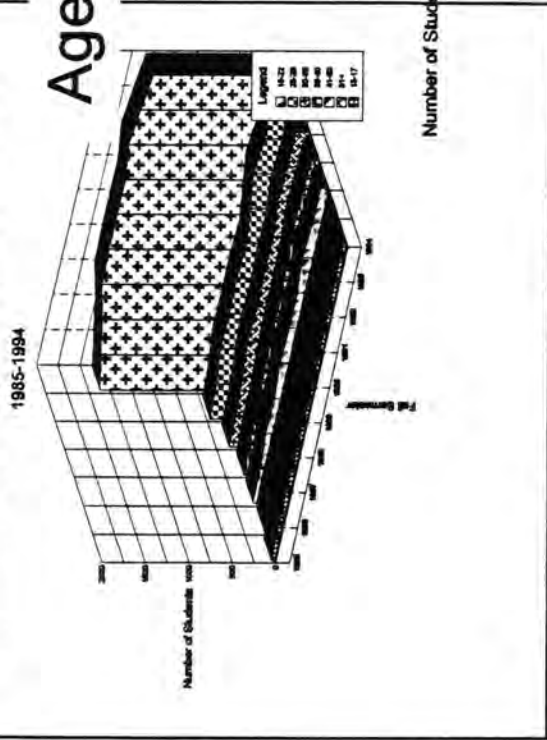
Figure 5. Number of students by gender.

Enrollment by Gender					
	Women	%	Men	%	
1984	2901	62.6	1731	37.4	
1985	2765	63.0	1627	37	
1986	2956	62.3	1785	37.7	
1987	3276	63.1	1915	36.9	
1988	3382	62.9	1996	37.1	
1989	3458	62.9	2038	37.1	
1990	3579	63.6	2051	36.4	
1991	3666	64.3	2038	35.7	
1992	3913	65.2	2093	34.8	
1993	3639	63.8	2064	36.2	
1994	3549	64.1	1991	35.9	

Age by Ethnicity by Gender--Fall 1994

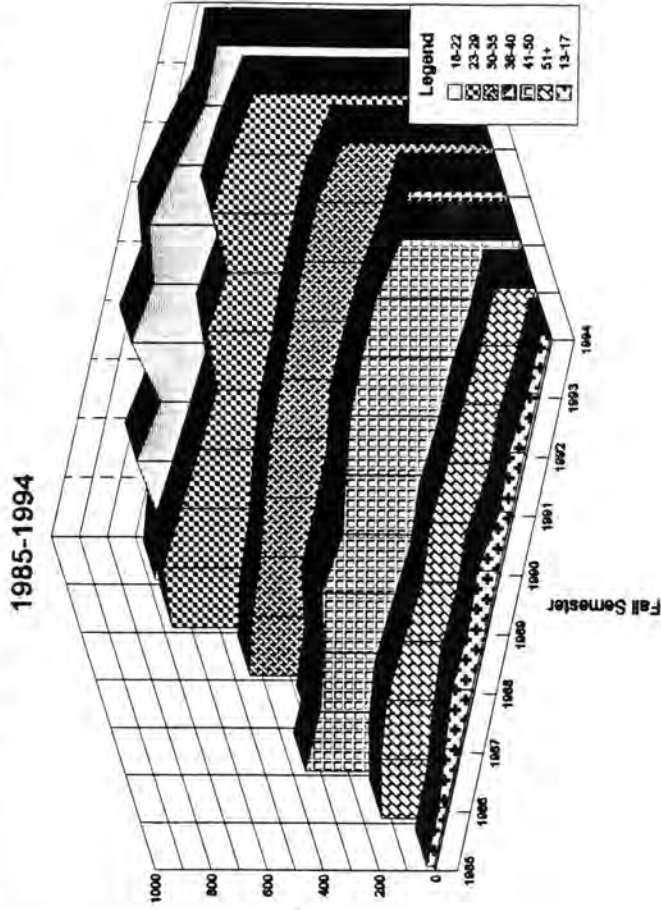
		13-17		23-18		23-29		30-35		36-40		41-50		50+		Total	%
White	F	39	60.9	1027	56.0	537	63.1	354	70.4	235	71.1	687	69.0	96	67.6	2575	62.7
	M	25	39.1	806	44.0	288	34.9	149	29.6	91	27.9	129	31.0	46	32.4	1534	37.3
Total		64		1833		825		503		326		416		142		4109	
Afr. Amer.	F	2	66.7	215	66.2	120	72.7	90	73.7	60	82.2	44	84.6	8	80.0	539	63.9
	M	1	33.3	110	33.8	45	27.3	32	26.3	13	17.8	8	15.4	2	20.0	211	36.1
Total		3		325		165		122		73		52		10		750	
Hisp.	F	4	80.0	161	59.4	80	62.5	48	78.7	23	67.6	23	74.2	4	57.1	343	63.9
	M	1	20.0	110	40.6	48	37.5	13	21.3	11	32.4	8	25.8	3	42.9	194	36.1
Total		5		271		128		61		34		31		7		537	
Asian	F	2	100	20	60.6	11	55.0	5	100	2	66.7	8	88.9	2	100	50	67.6
	M	0		13	39.4	9	45.0	0		1	33.3	1	11.1	0		24	32.4
Total		2		33		20		5		3		9		2		74	
Am. Ind.	F	0		8	80.0	5	83.3	3	60.0	0		3	60.0	1	50.0	20	69.0
	M	1	100	2	20.0	1	16.7	2	40.0	0		2	40.0	1	50.0	9	31.0
Total				10		6		5				5		1		29	
Res. A	F	0		9	45.0	9	64.3			1	50.0	1	50.0			22	53.7
	M	1	100	11	55.0	5	35.7	2	100	1	50.0	1	50.0	1	100	19	46.3
Total		1		20		14		2		2		2		1		41	

### Age Ranges for Full Time Enrollment



**Figure 6** Number of students who take 12 or more hours by age range.

### Age Ranges for Part Time Enrollment



**Figure 7.** Number of students who take less than 12 hours by age range

Age Range By Year											
	1985	1986	1987	1988	1989	1990	1991	1992	1993	1994	
Number Of Students											
13-17	66	75	99	118	98	105	81	91	78	76	
18-22	<u>2046</u>	<u>2155</u>	<u>2367</u>	<u>2427</u>	<u>2593</u>	<u>2562</u>	<u>2625</u>	<u>2640</u>	<u>2535</u>	<u>2492</u>	
23-29	879	983	1009	985	972	1029	1057	1224	1156	1158	
30-35	540	593	632	697	703	718	716	766	742	698	
36-40	325	357	417	441	446	488	487	510	466	438	
41-50	<u>391</u>	<u>388</u>	<u>448</u>	<u>502</u>	<u>496</u>	<u>523</u>	<u>551</u>	<u>591</u>	<u>562</u>	<u>514</u>	
51+	145	190	219	208	188	205	187	184	164	164	

Part Time and Full Time Enrollment Age Ranges														
	1985	1986	1987	1988	1989	1990	1991	1992	1993	1994		1993	1994	1994
A	<u>26</u>	<u>40</u>	<u>52</u>	<u>71</u>	<u>83</u>	<u>90</u>	<u>94</u>	<u>95</u>	<u>97</u>	<u>98</u>	<u>99</u>	<u>100</u>	<u>101</u>	<u>102</u>
B	<u>677</u>	<u>1369</u>	<u>838</u>	<u>792</u>	<u>1641</u>	<u>1642</u>	<u>1643</u>	<u>1705</u>	<u>1658</u>	<u>1608</u>	<u>1608</u>	<u>1658</u>	<u>1684</u>	<u>1608</u>
C	<u>567</u>	<u>212</u>	<u>731</u>	<u>713</u>	<u>276</u>	<u>251</u>	<u>307</u>	<u>327</u>	<u>317</u>	<u>316</u>	<u>316</u>	<u>317</u>	<u>302</u>	<u>316</u>
D	444	96	492	532	145	155	142	187	162	165	165	162	153	165
E	<u>288</u>	<u>37</u>	<u>365</u>	<u>363</u>	<u>80</u>	<u>83</u>	<u>87</u>	<u>99</u>	<u>105</u>	<u>88</u>	<u>88</u>	<u>105</u>	<u>150</u>	<u>88</u>
F	<u>353</u>	<u>38</u>	<u>377</u>	<u>433</u>	<u>92</u>	<u>80</u>	<u>81</u>	<u>476</u>	<u>115</u>	<u>84</u>	<u>84</u>	<u>88</u>	<u>430</u>	<u>84</u>
G	<u>131</u>	<u>12</u>	<u>208</u>	<u>182</u>	<u>16</u>	<u>14</u>	<u>13</u>	<u>168</u>	<u>15</u>	<u>18</u>	<u>18</u>	<u>15</u>	<u>146</u>	<u>18</u>

Legend	A = 13-17	B = 18-22	C = 23-29	D = 30-35	E = 36-40	F = 41-50	G = 51+
--------	-----------	-----------	-----------	-----------	-----------	-----------	---------

Double Underline denotes Part-Time enrollees.

# Enrollment Growth 1985-1994

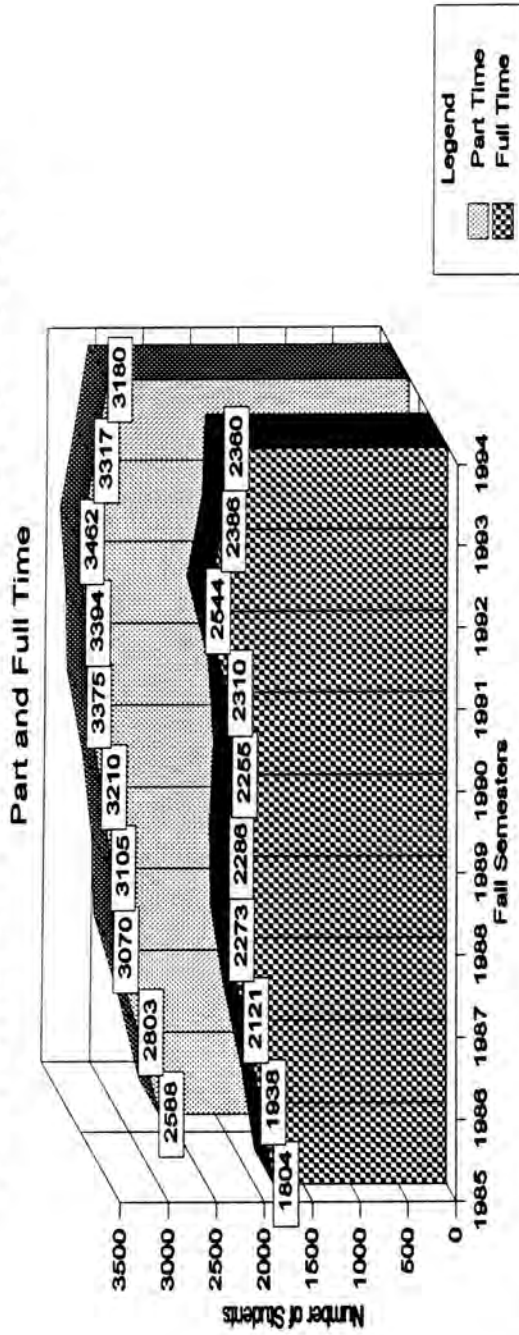


Figure 8. Comparison of total full time and total part time enrollment.

		Part Time v. Full Time Enrollment												
		1985	1986	1987	1988	1989	1990	1991	1992	1993	1994	1994	1994	%
Part Time		2588	2803	3070	3105	3210	3375	3394	3462	3317	3180	3180	3180	57
Full Time		1804	1938	2121	2273	2286	2255	2310	2544	2386	2360	2360	2360	43
Total		4392	4741	5191	5378	5496	5630	5704	6006	5703	5540	5540	5540	

# Distribution of Hours Taken

1993

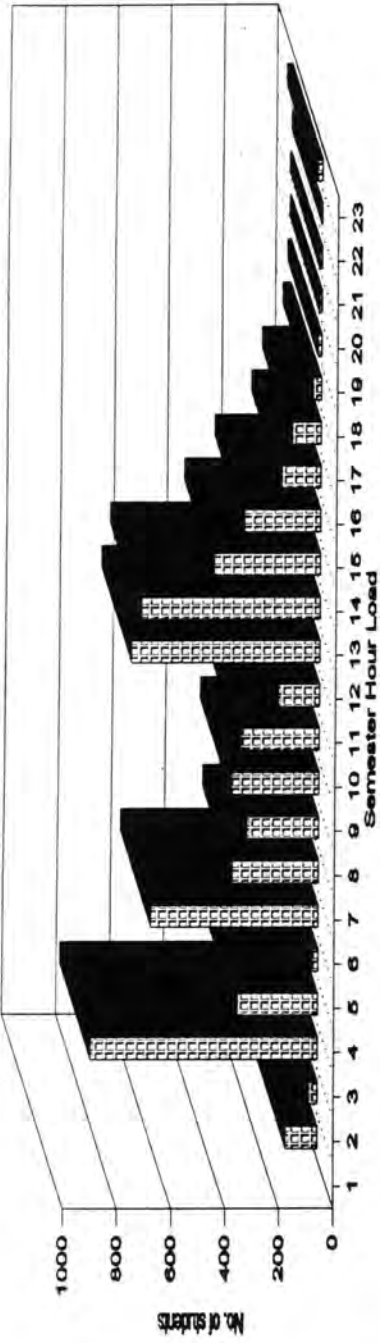


Figure 9. Distribution of students by number of hours taken in 1993.

# Distribution of Hours Taken

1994

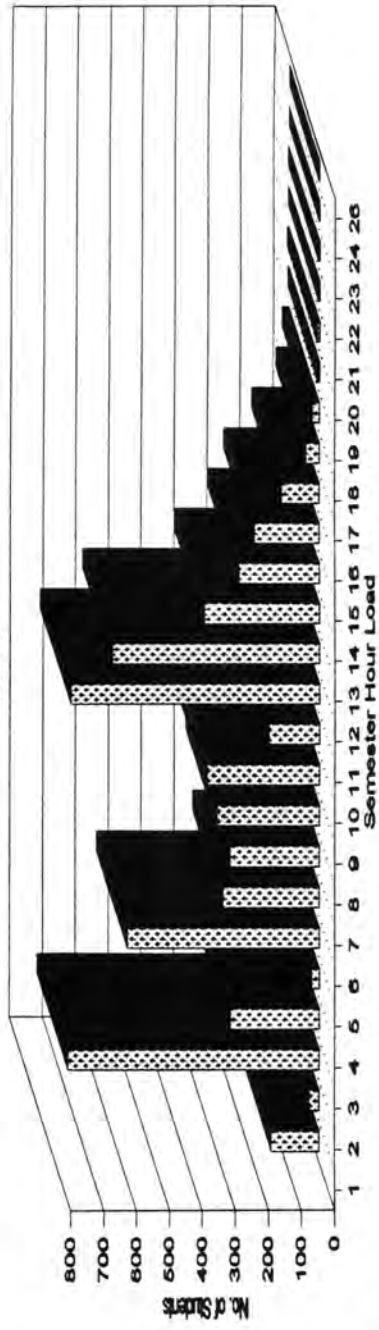


Figure 10. Distribution of students by number of hours taken in 1994.



# Counties Served By MCC

All Send More Than Fifty Students

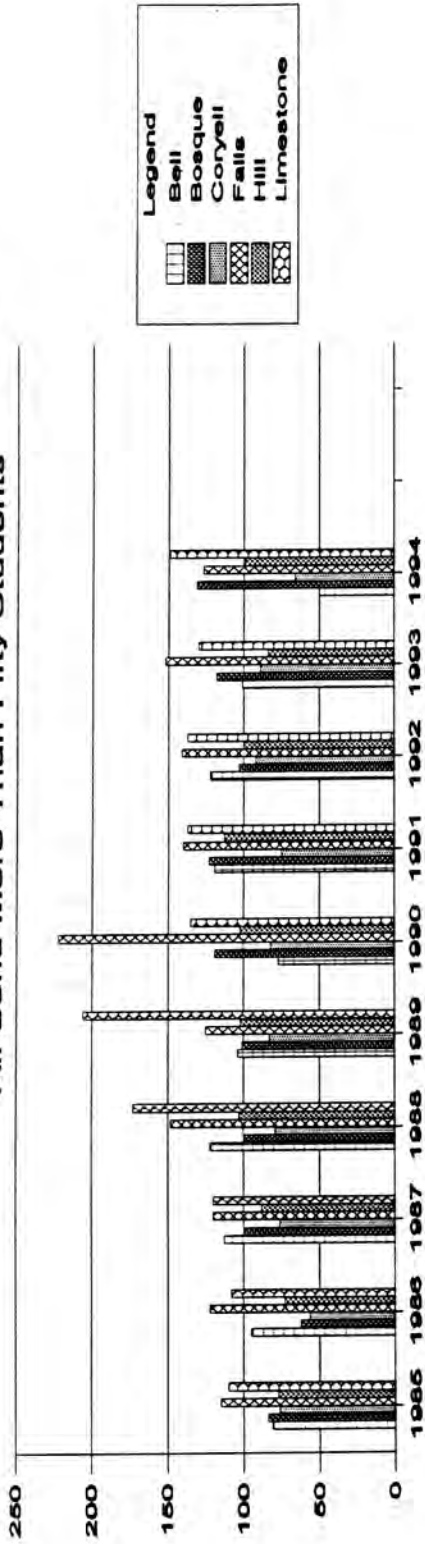
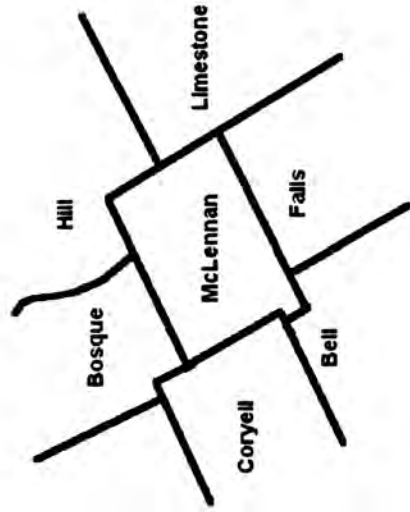


Figure 11. Texas counties outside of McLennan County, listed as home to MCC students.



Counties Served By MCC							
	Bell	Bosque	Coryell	Falls	Hill	Limestone	
Number of Students							
1985	81	84	76	115	77	110	
1986	95	62	56	122	73	108	
1987	113	100	76	120	88	164	
1988	122	99	79	148	103	173	
1989	104	101	83	125	102	206	
1990	77	119	82	222	102	135	
1991	119	123	75	140	113	137	
1992	122	103	92	141	100	137	
1993	101	118	89	152	84	130	
1994	50	131	66	127	99	149	

## Enrollment By Major

► This table is based on the best available data. Because of changes in state regulation that led to multiple changes in the names of majors and/or the deletion of majors, some majors were impossible to track across all the dates indicated.

	1990	1991	1992	1993	1994
Accounting Cert.			14	13	45
Advertising		2	1	1	
Ag. Business and Management	3	2	4	9	9
Agricultural Science	19	25	23	10	6
Applied Biology			1		
Architecture	11	3	3		2
Art History, Criticism, and Conservation	25	35	31		
Biochemistry				1	2
Biology, Gen.	31	26	34	31	16
Bus. Acct. (Mgmt. Acct.)	226	218	219	187	142
Business Admin.				105	113
Business and Management				180	127
Business Management	92	99	94	133	181
Business, Gen.	136	106	136	82	86
C D Special Persons	2	2	9	9	
Chemistry, Gen.	7	11	10	3	5
Child Dev. Admin. Cert.			3	3	3
Child Dev.	208	194	231	220	246

	1990	1991	1992	1993	1994
CJ Corrections			35	47	39
CJ Law Enforcement	133	184	196	151	134
Clerical Typist	4	5			3
Commercial Music: Comp/Arrang			5	5	5
Commercial Music: Audio Tech			41	33	20
Commercial Music: Performance.			18	11	20
Commercial Music: Gen.	57	50			
Communications, Gen.	15	10	10	10	6
Computer Data Processing Programming	210	191	169	109	94
Computer Science	55	50	57	57	52
Cosmetology Cert.	20	48	40	22	31
Denistry, Predental				3	9
Drama	34	32	42	42	24
Ecology			1	1	
Economics	6	2	4	2	
Education, Gen.	45	49	44	123	180
Electrical Eg./Electronics	2	2	1	2	1
Elementary Teacher Ed.	154	189	178		
Emergency Ed. Serv. Cert.	15	16	2	11	15
Engineering , Gen.	75	56	55	64	58
English Language and Lit., Gen.	12	27	19	14	9
Exec. Sec.	15	14			

	1990	1991	1992	1993	1994
Fashion Merch. Cert.	50	33	29	20	25
Fine Arts, Gen.	3	3	2	48	37
Foreign Lang, Gen.	1	1		1	
Forestry Related Science				1	
Geography	1				
Geology	4	5	6	2	2
Gerontology Cert.			1	1	24
History	18	15	16	15	8
Home Economics, Gen.	3	3	1		2
Hospital/Health Facilities Adm.	18	17	24		
Information Word Proc.	36	29	35	35	40
Interior Design	2	3	1	1	2
Interpreter Training Cert.	42	39	55	56	60
Journalism (Mass Comm.)	26	21	23	34	30
Law (LLD, JD)	52	30	32	42	33
Law Enforcement and Corrections	23	26	23	34	37
Legal Sec.	45	34	45	37	22
Library Science				1	
Life Insurance Ed.	1				
Long Term Health Care				13	3
Management/Financial	14	19	28	14	18
Management/Postal Service	4	4	3	2	
Management/Real Estate	63	45	41	39	38
Mathematics, Gen.	14	21	15	11	6

	1990	1991	1992	1993	1994
Medical Lab. Tech.	51	47	49	45	47
Medical Secretarial	16	16	30	30	45
Medicine, Gen				62	77
Microcomputer Cert.	21	41	87	81	72
Music Ed.	4	4	13	6	3
Music, Gen.	46	42	25	43	37
Nursing, Gen.	557	613	666	774	722
Nursing Home Admin Cert.				4	
Parks/Recreation, Gen			1		1
Pharmacy				11	12
Philosophy	1				
Photography				1	1
Physical Ed.	58	70	88	68	67
Physical Sciences, Gen.	22	51	31	13	7
Physical Therapy Asst.	109	135	188	166	161
Physical Therapy				18	16
Physics, Gen.	2		2	2	1
Political Science/Govt.	13	11	7	5	4
Psychology, Gen.	116	112	109	118	107
Radio/Television, Gen.	2	2			
Radiologic Tech.	87	107	135	130	122
Range and Wildlife Management	2	2	1		
Respiratory Care Tech.	39	47	45	29	35
Secondary teacher Ed.	76	72	55	138	100

	1990	1991	1992	1993	1994
Social Work, Gen.	15	23	31	22	31
Sociology	14	26	16	12	15
Spanish	2	1	1	3	
<b>Special Student</b> <small>99999999</small>	476	410	331	241	208
Speech/Debate/Forensics	9	8	7	9	3
Speech Pathology				2	2
Substance Abuse/Addiction			24	56	26
Theological Studies	4	4	10	6	5
<b>Gen. Acad./Undeclared</b> <small>24010200</small>	1070	1042	1074	1226	1211
Veterinary Medical					2
Vocational Nurse Cert.	103	103	148	106	87
Youth Counseling Cert. (Mental Health)	190	186	191	174	159
Zoology, Gen.		1	1	1	1

**Contact Hours and Seat Counts  
Fall Semesters 1992-1994**

DEPT	Contact Hrs. 92	Contact Hrs. 93	Contact Hrs. 94	Seatcounts 92	Seatcounts 93	Seatcounts 94
ACCT	31,200	26,112	26,480	723	607	625
AGRI	816	0	0	27	0	0
ANTH	0	1,248	1,056	0	26	22
ARTS	12,832	15,648	15,408	276	346	335
BIOL	79,776	77,088	74,304	1,662	1,606	1,548
BUSI	52,480	53,712	58,240	819	760	885
CHDE	32,256	33,632	33,024	516	454	514
CHEM	19,072	16,880	16,208	368	328	312
CISY	26,944	18,800	17,968	648	431	461
CMAP	2,176	2,160	1,856	101	96	82
CMUS	18,256	17,504	13,520	333	319	245
COMM	4,256	4,832	5,056	78	112	112
COSC	37,920	37,824	35,904	1,128	1,132	1,064
CRIJ	21,456	16,320	16,752	447	340	349
DANC	2,816	2,624	3,648	44	82	114
DRAM	10,336	14,448	12,736	218	225	202
ECON	17,328	14,448	12,672	361	301	264
EDUC	320	320	384	20	20	24
EMSP	0	4,256	4,688	0	57	61
ENGL	110,416	106,448	90,880	2,448	2,329	1,988
ENGR	2,848	2,288	1,536	65	53	36
ENVS	1,824	2,064	1,536	38	43	32
ESOL	1,104	1,216	704	35	38	22
FASH	2,880	3,648	2,832	46	36	34
FSER	1,392	480	384	24	10	8



DEPT	Contact Hrs. 92	Contact Hrs. 93	Contact Hrs. 94	Seatcounts 92	Seatcounts 93	Seatcounts 94
GEOG	2,256	1,632	1,920	47	34	40
GEOL	5,760	5,568	4,512	120	116	94
GOVT	30,672	31,392	33,840	639	654	705
HCAR	10,016	8,736	9,056	205	182	189
HIST	53,616	52,896	45,888	1,117	1,102	956
HUMA	0	0	912	0	0	57
HUMD	5,040	1,920	1,520	115	40	39
INTR	11,536	12,224	13,552	252	260	287
LEGA	0	0	4,656	0	0	97
MATH	97,504	96,192	93,712	2,432	2,389	2,375
MHLT	42,880	42,960	44,784	800	826	628
MLTE	4,048	2,880	3,216	80	58	64
MUAP	2,544	2,896	2,976	105	116	119
MUSI	20,960	22,160	23,520	425	723	767
NUHA	2,736	1,488	2,016	57	31	42
NURS	82,560	75,520	93,440	1,160	989	1,120
OFAD	18,944	16,976	19,440	451	391	476
ORIE	15,904	14,064	14,864	994	1,128	1,065
PHED	56,688	52,368	49,632	1,181	1,091	1,034
PHIL	4,032	3,840	4,080	84	80	85
PHYS	10,752	10,080	7,488	224	210	156
PSYC	42,384	39,888	35,760	883	831	745
PTAP	12,160	12,896	13,056	158	194	192
RADT	18,144	20,880	19,808	300	341	326
RCTP	11,248	10,672	11,568	209	230	249
READ	25,248	20,544	27,888	532	428	581
REAL	4,720	4,464	3,600	85	83	60
RELI	12,816	14,160	12,192	267	295	254

DEPT	Contact Hrs. 92	Contact Hrs. 93	Contact Hrs. 94	Seatcounts 92	Seatcounts 93	Seatcounts 94
SOCI	20,064	16,608	14,208	418	346	296
SPAN	11,504	14,448	10,880	284	357	269
SPCH	18,144	21,456	26,304	378	447	548
VONU	37,260	38,748	36,672	480	641	608

Key to Department Abbreviations		
AGR	Agriculture Science	AGRI
ANT	Anthropology	ANTH
ART	Art	ARTS
BIO	Biology	BIOL
BUS	Business	BUSI
CD	Child Development	CHDE
CJ	Criminal Justice	CRIJ
CDP	Computer Data Processing	CISY/COSC
CHE	Chemistry	CHEM
CMA	Music (Commercial)	CMAP/CMUS (MUSI)
DRA	Drama	DRAM
ECO	Economics	ECON
EDU	Education	EDUC
EGN	Engineering	ENGR
EMS	Paramedicine	EMSP
ENG	English	ENGL
ENS	Environment Science	ENVS
ESL	English as a Second Language	ESOL
FM	Fashion Merchandising	FASH
FS	Financial Services	FSER
GEL	Geology	GEOL
GEO	Geography	GEOG
GOV	Government	GOVT
HC	Health Careers	HCAR
HDV	Human Development	HUMD
HIS	History	HIST

HPE	Health and Physical Education	PHED
IT	Interpreter Training	INTR
JOU	Journalism	COMM
MH	Mental Health	MHLT
MAT	Mathematics	MATH
MLT	Medical Lab Tech.	MLTE
MUS	Music	MUSI
NHA	Nursing Home Administration	NUHA
NUR	Nursing	NURS
OFA	Office Administration	OFAD
ORI	Orientation	ORIE
PHE	Health and Physical Education	PHED
PHI	Philosophy	PHIL
PHY	Physics	PHYS
PSA	Postal Service Administration	0
PSY	Psychology	PSYC
PTA	Physical Therapy Assistant	PTAP
RE	Real Estate	REAL
RT	Radiologic Tech.	RADT
RCT	Respiratory Care Tech.	RCTP
REA	Reading	READ
REL	Religion	RELI
RTH	0	0
SOC	Sociology	SOCI
SPA	Spanish	SPAN
SPE	Speech	SPCH
VN	Vocational Nursing	VONU

# Total Contact Hours

Fall Semesters: 1988-1993

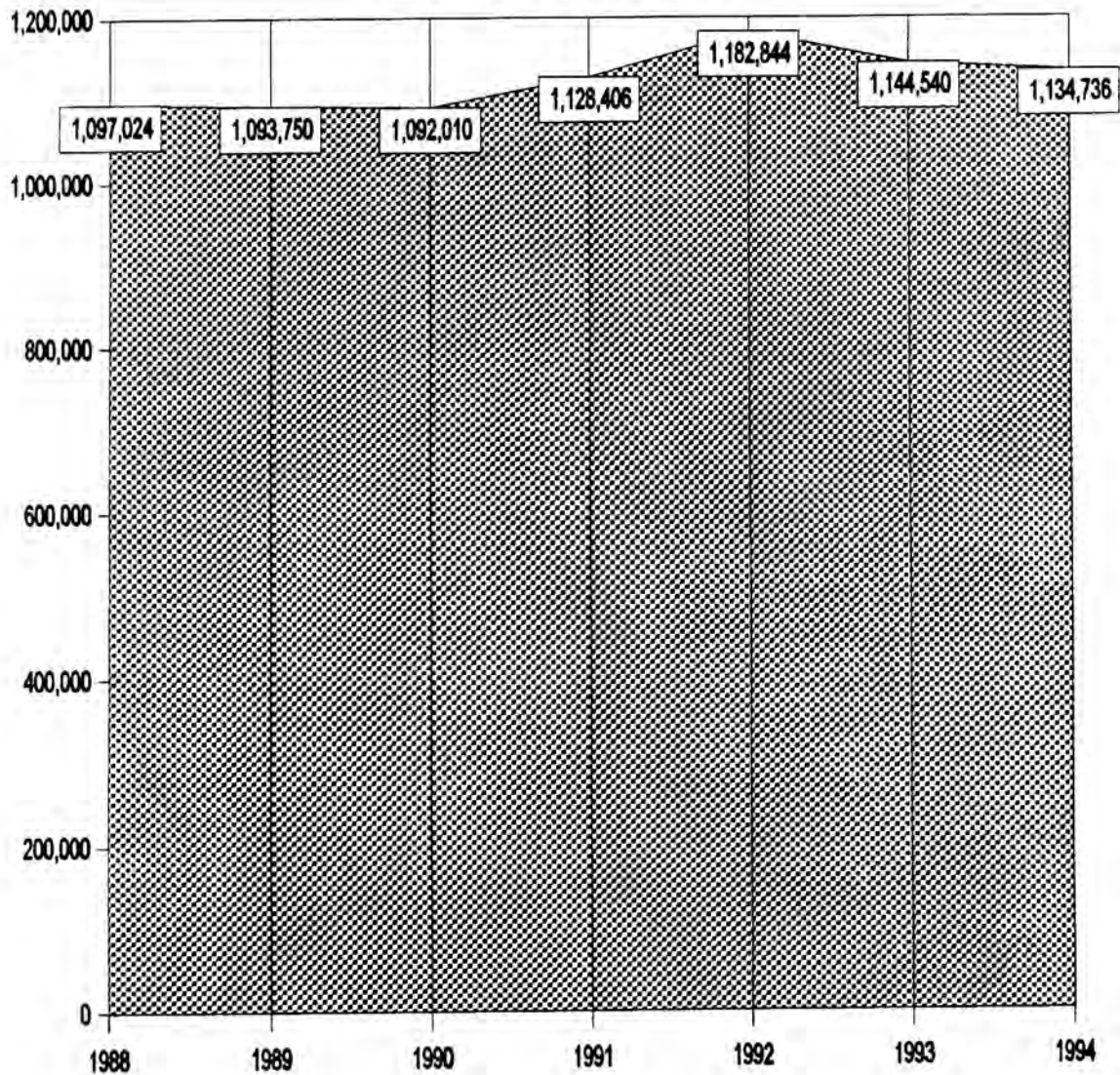
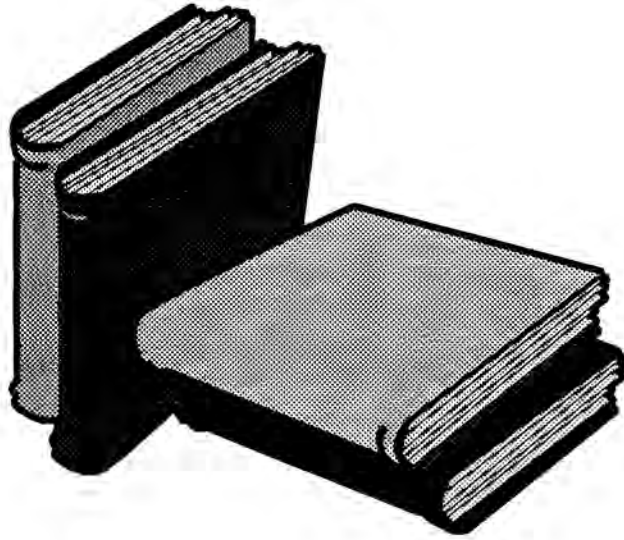


Figure 12. Total contact hours.

# Selected Characteristics Of Fall 1994 Students



## Disadvantaged Status

Fall 1993

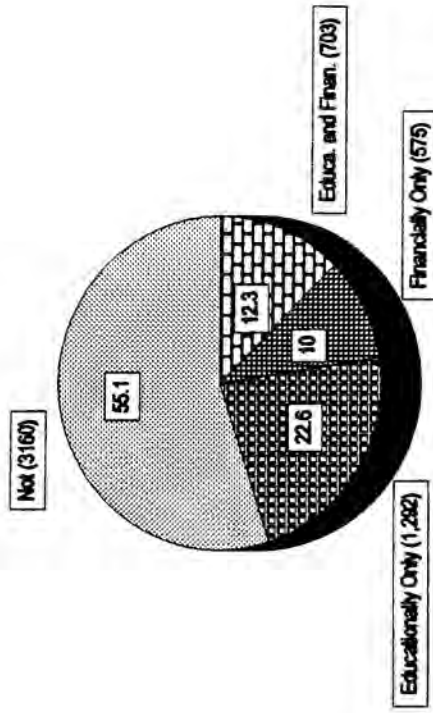


Figure 13. Disadvantaged status of MCC students--fall 1993.

## Disadvantaged Status

Fall 1994

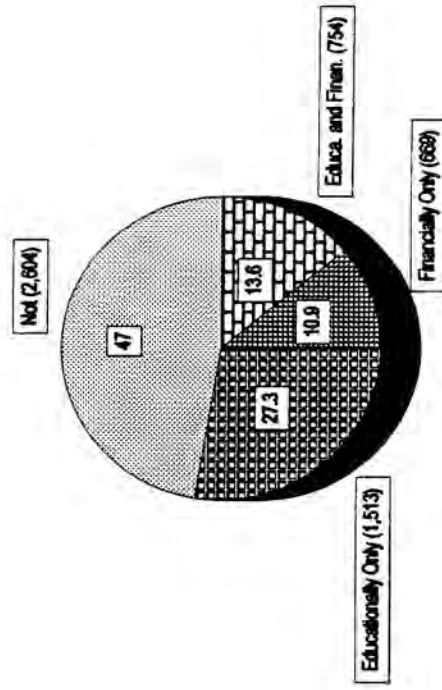


Figure 14. Disadvantaged status of MCC students--fall 1994.

# Employment Status

Fall 1993

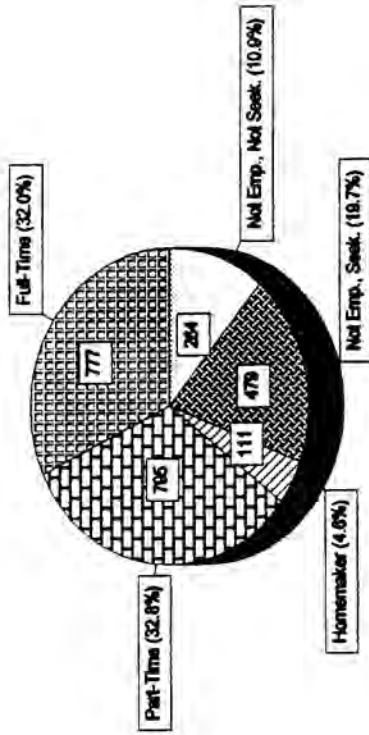


Figure 16. Employment status survey results of 2,445 students.

Surveys are based on self-reports by students. All students did not answer all questions.

# Employment Status

Fall 1994

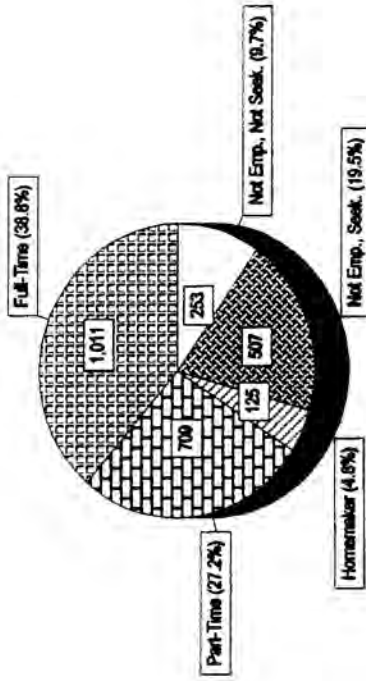
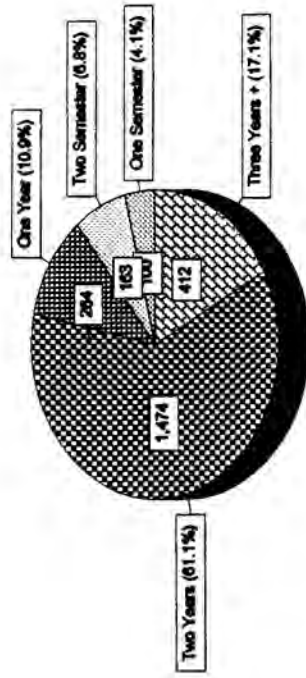


Figure 15. Employment status survey results of 2,666 students-fall 1994.

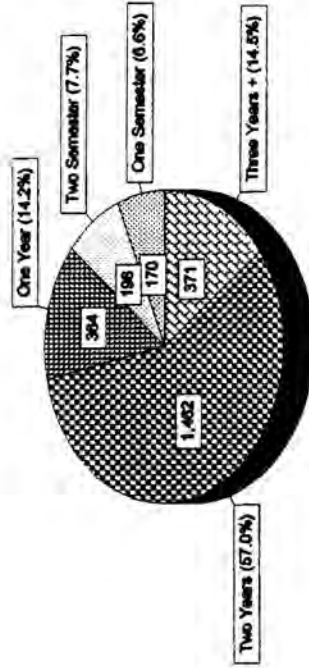
## Intended Duration

Fall 1993



## Intended Duration

Fall 1994



**Figure 17.** Students' expected length of stay at MCC--1993, based on a survey of 2,445 students.

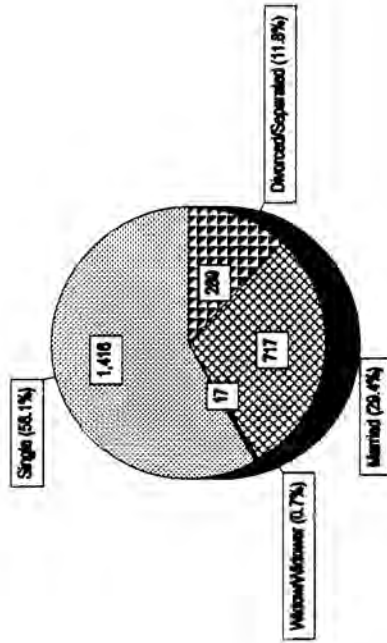
**Figure 18.** Students' expected length of stay at MCC--1994, based on a survey of 2,666 students.

Surveys are based on self-reports by students. All students did not answer all questions.



## Marital Status

Fall 1993

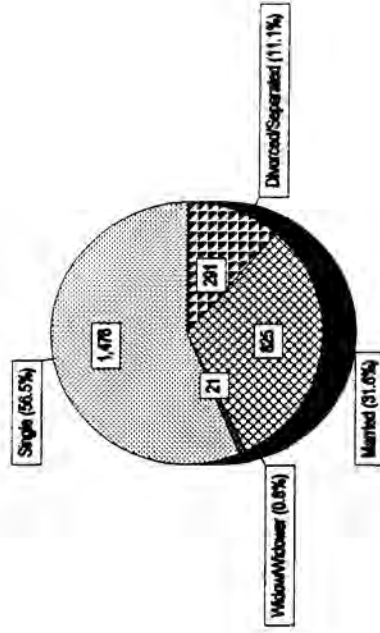


**Figure 20.** Marital status of students, based on survey of 2,445 students.

According to survey, 222 were displaced homemakers, and 435 were single parents. Surveys are based on self-reports by students. All students did not answer all questions.

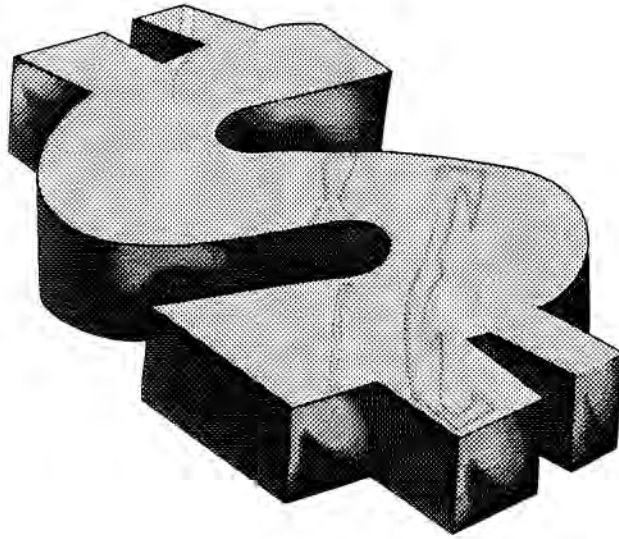
## Marital Status

Fall 1994



**Figure 19.** Marital status of students, based on survey of 2,445 students.

# Financial Aid



## Financial Aid Awarded By Ethnicity Academic Year 1992-1993

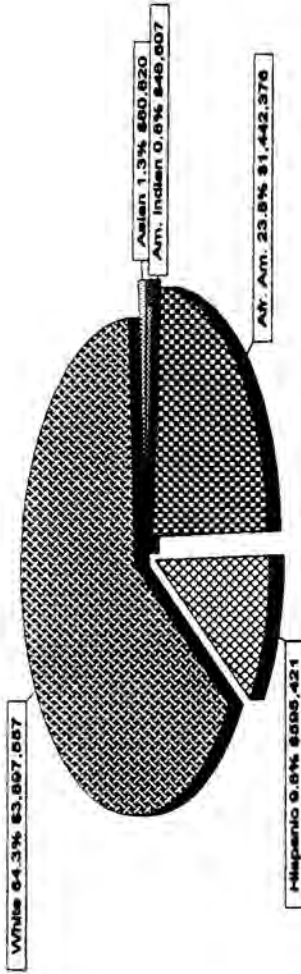


Figure 23. Financial aid awarded by ethnic group with total amount awarded.

## Financial Aid Awarded By Ethnicity Academic Year 1993-1994

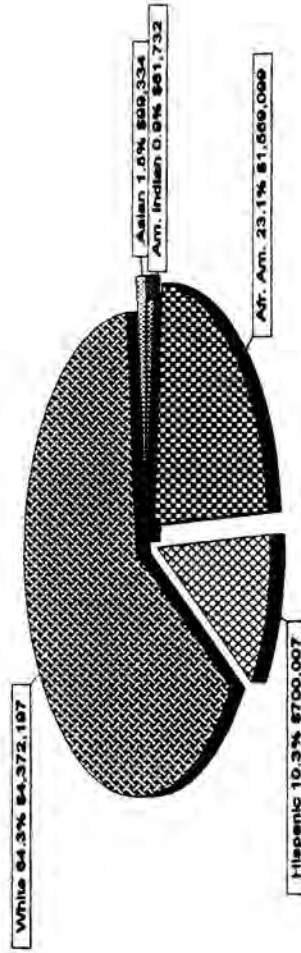


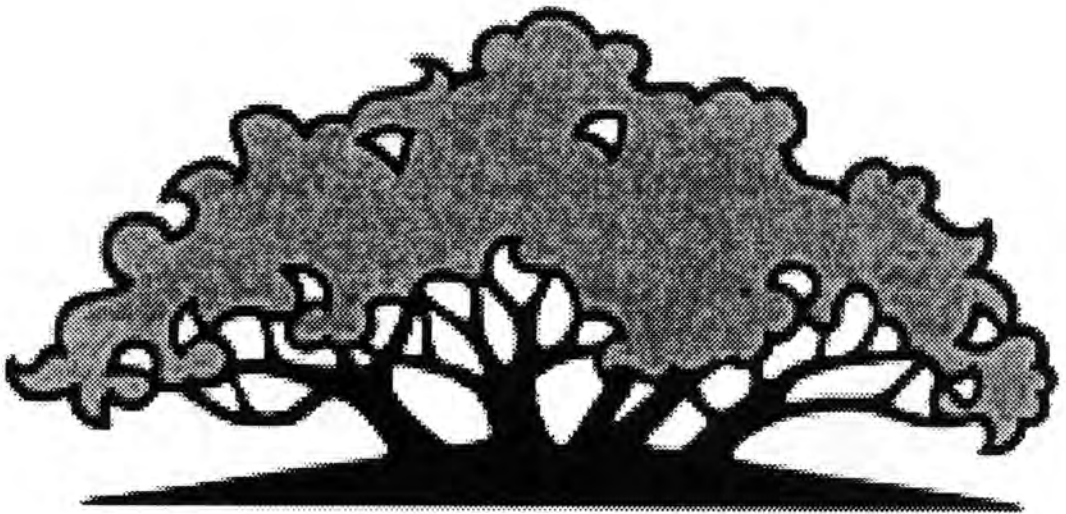
Figure 24. Financial aid awarded by ethnic group with total amount awarded.

Financial Aid Awarded by Ethnicity and Gender -- Academic Years 1992-1993 and 1993-1994										
	Work Programs		Pell Grants		Loans		Scholarships		No. of Awards	
<b>Am. Indian</b>										
Gender	1992	1993	1992	1993	1992	1993	1992	1993	1992	1993
F	2	2	5	8	9	5	2	0	18	15
M	0	1	5	4	6	5	0	2	11	12
Total	2	3	10	12	15	10	2	2	29	27
<b>Asian</b>										
Gender										
F	8	3	17	14	6	9	7	8	38	34
M	11	7	13	9	5	4	7	3	36	23
Total	19	10	30	23	11	13	14	11	74	57
<b>African- American</b>										
Gender										
F	22	63	416	353	332	205	75	112	845	733
M	8	10	138	90	97	65	39	57	282	222
Total	30	73	554	443	429	270	114	169	1127	955
<b>Hispanic</b>										
Gender										
F	14	24	174	178	99	74	45	51	332	327
M	1	6	67	58	40	29	22	33	130	126
Total	15	30	241	236	139	103	67	84	462	453
<b>White</b>										
Gender										
F	55	94	1006	816	753	553	367	389	2181	1852
M	8	23	383	281	284	204	244	282	919	768
Total	63	117	1389	1097	1037	757	611	671	3100	2620

Totals	Work Programs	Pell Grants	Loans	Scholarships	Grand Total
1992	129	2224	1631	808	4792
1993	129	1799	1153	947	4028

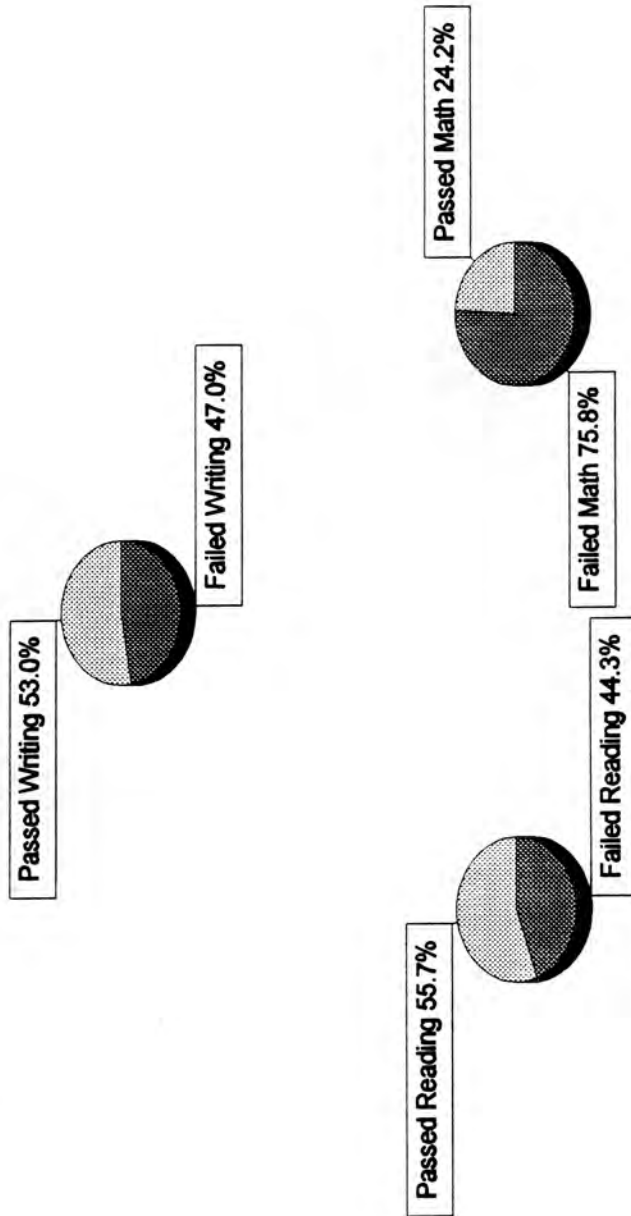
■ Many students received multiple awards; tuition exempt students were not included in these counts.

# Assessment



# MCC Placement Test Results

Subject Percentages (10,084 students)



**Figure 25.** MCC Placement Test -- Pass/fail percentages for writing, reading, and math.

# MCC Placement Test Results

By Test Subject (10,084 students)

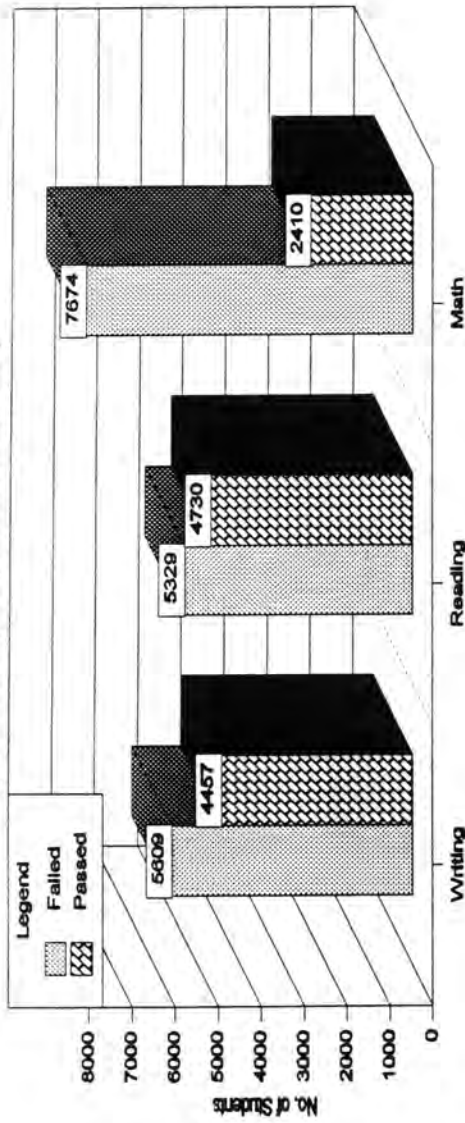


Figure 26. Students passing MCC placement test -- 1990 to 1994.

# MCC Placement Test Scores

READING and MATH (10,084 students)

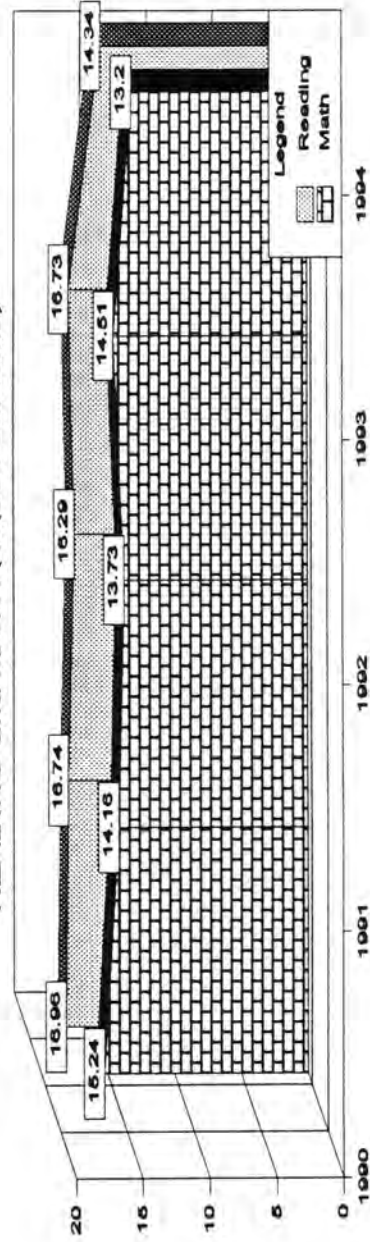


Figure 27. MCC Placement Test scores -- reading and math.

## MCC Placement Test Results

Fall 1993 Students Only

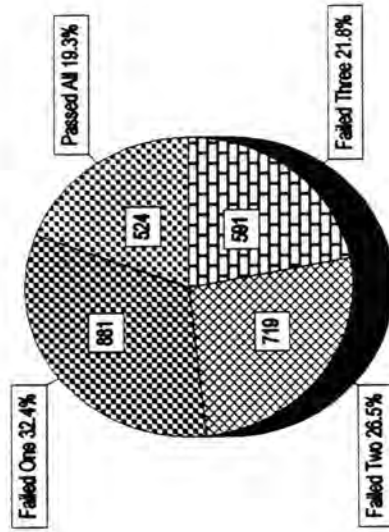


Figure 29. MCC Placement Test Results for fall 1993.

## MCC Placement Test Results

Fall 1994 Students Only

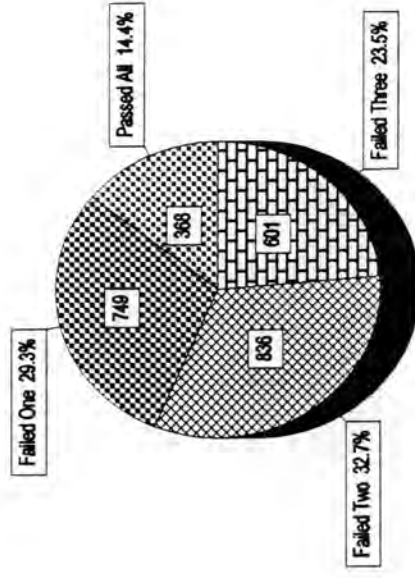


Figure 28. MCC Placement Test Results for fall 1994.



## TASP Test Scores (First Time Taken)

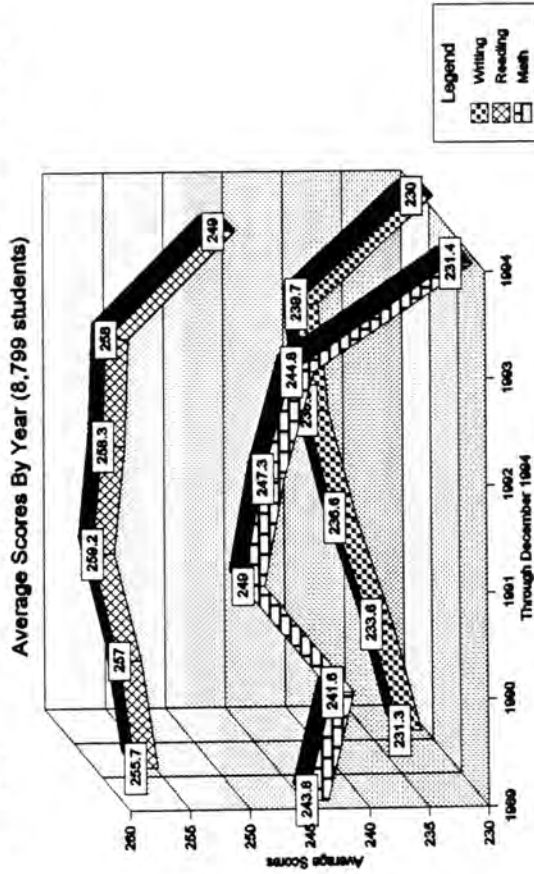


Figure 30. Average TASP scores by year and by subject.

## TASP Test Results (First Time Taken)

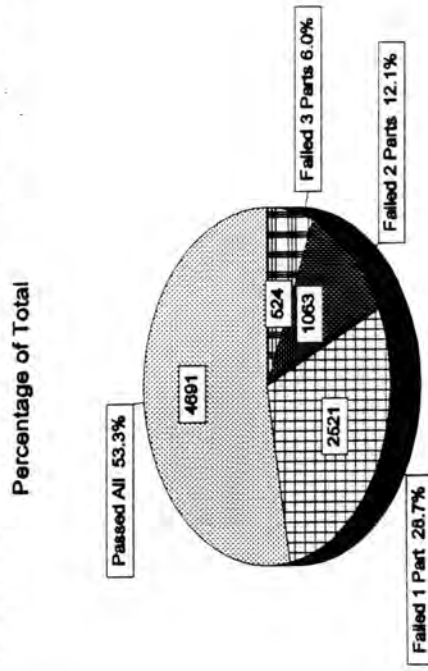


Figure 31. First time performance of MCC students on TASP through 12/1/1994.

# TASP Test Results (First Time Taken)

Percentage of the Total

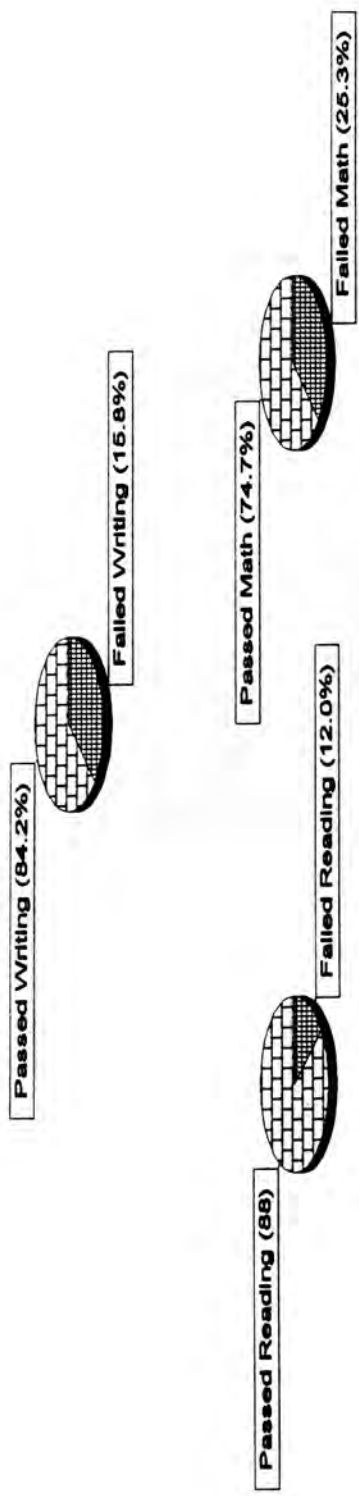


Figure 32. First time performance of MCC students on TASP test by subject.

TASP Test Results (First Time Taken)		
	Passed	Failed
Reading	7714	1316
Writing	7380	1512
Math	5347	3618

# Student Outcomes



Degree Received By Ethnicity

	DEGREE	White	Afr. American	Hispanic	Asian	Am. Indian	Other	Totals	Yr. Totals
1990	AA	99	10	6		0	0	115	
	AAS	210	23	18		0	0	254	
	CERT	118	33	9		2	0	163	
	Totals	427	66	33		2	0		532
1991	AA	84	8	5		2	2	101	
	AAS	227	32	17		0	0	277	
	CERT	115	21	8		0	0	144	
	Totals	426	61	30		2	1		522
1992	AA	92	13	5		0	4	115	
	AAS	245	32	16		1	2	297	
	CERT	145	35	21		1	0	204	
	Totals	482	80	42		2	4		616
1993	AA	86	20	10		1	1	118	
	AAS	289	38	22		2	0	353	
	CERT	130	40	9		1	0	181	
	Totals	505	98	41		4	3		652
1994	AA	83	15	9		3	2	112	
	AAS	265	31	25		4	0	326	
	CERT	159	33	13		3	0	208	
	Totals	507	79	47		10	1		646

Automated Student Follow-up Study

Type of Major	Additional Education (not Empl.)		Employed (no Addl. Educ.)		Employed and Addl. Education		Total Empl. and/or Addl. Educ.		Students not Found		Total Former Students
	#	%	#	%	#	%	#	%	#	%	
<b>TECHNICAL</b>											
Graduates											
1990-91	9	2.3%	298	76.0%	47	12.0%	354	90.3%	38	9.7%	392
1991-92	8	1.7%	337	71.9%	92	19.6%	437	93.2%	32	6.8%	469
1992-93	15	3.0%	348	69.6%	72	14.4%	435	87.0%	65	13.0%	500
<b>Non-Returning</b>											
1990-91	42	2.1%	1548	76.3%	193	9.5%	1783	87.9%	246	12.1%	2,029
1991-92	30	1.6%	1451	76.1%	184	9.7%	1665	87.4%	241	12.6%	1,906
1992-93	31	1.5%	1634	76.8%	194	9.1%	1859	87.4%	269	12.6%	2,128
<b>Total Technical</b>											
1990-91	51	2.1%	1846	76.2%	240	9.9%	2137	88.3%	284	11.7%	2,421
1991-92	38	1.6%	1788	75.3%	276	11.6%	2102	88.5%	273	11.5%	2,375
1992-93	46	1.8%	1982	75.4%	266	10.1%	2294	87.3%	334	12.7%	2,628

Type of Major	Additional Education (not Empl.)		Employed (no Addl. Educ.)		Employed and Addl. Education		Total Empl. and/or Addl. Educ.		Students not Found		Total Former Students
	#	%	#	%	#	%	#	%	#	%	
<b>ACADEMIC</b>											
<b>Graduates</b>											
1990-91	10	9.9%	32	31.7%	43	42.6%	85	84.2%	16	15.8%	101
1991-92	5	4.5%	58	51.8%	37	33.0%	100	89.3%	12	10.7%	112
1992-93	17	14.8%	45	39.1%	33	28.7%	95	82.6%	20	17.4%	115
<b>Non-Returning</b>											
1990-91	167	6.1%	1547	56.2%	722	26.2%	2436	88.4%	319	11.6%	2,755
1991-92	96	4.3%	1432	63.7%	458	20.4%	1986	88.3%	262	11.7%	2,248
1992-93	107	4.9%	1388	63.3%	411	18.7%	1906	86.9%	288	13.1%	2,194
<b>Total Academic</b>											
1990-91	177	6.2%	1579	55.3%	765	26.8%	2521	88.3%	335	11.7%	2,856
1991-92	101	4.3%	1490	63.1%	495	21.0%	2086	88.4%	274	11.6%	2,360
1992-93	124	5.4%	1433	62.1%	444	19.2%	2001	86.7%	308	13.3%	2,309
<b>UNDECIDED</b>											
<b>Non-Returning</b>											
1990-91	4	0.5%	582	72.3%	39	4.8%	635	77.5%	184	22.5%	819
1991-92	45	4.1%	653	59.9%	209	19.2%	907	83.2%	183	16.8%	1,090
1992-93	65	5.7%	631	55.3%	150	13.1%	846	74.1%	296	25.9%	1,142

Type of Major	Additional Education (not Empl.)		Employed (no Addl. Educ.)		Employed and Addl. Education		Total Empl. and/or Addl. Educ.		Students not Found		Total Former Students
	#	%	#	%	#	%	#	%	#	%	
<b>MCC TOTALS</b>											
1990-91	232	3.8%	4017	65.9%	1044	17.1%	5293	86.8%	803	13.2%	6,096
1991-92	184	3.2%	3931	67.5%	980	16.8%	5095	87.8%	730	12.5%	5,825
1992-93	235	3.9%	4046	66.6%	860	14.1%	5141	84.6%	938	15.4%	6,079

\* Shaded area indicates the figures used in determining the 85% measure.

The graduates in this study include all technical and academic students who were reported on the CBM-009 Graduation Report who graduated during the 1990-1991 academic year. If a student received more than one degree or certificate, that student was counted once. Employment was determined by matching former student social security numbers against the Texas Employment Commission's Unemployment Insurance Wage-Record data base, using the most recent data available at the time.

**Receiving Institutions for MCC Students**  
 Who Transferred in the Fall Semester After Graduating or Leaving MCC  
 Institutions with 10 or More Students in All Years

Institutions	90-91	91-92	92-93
Baylor	732	994	650
Texas A&M	179	182	154
UT-Austin	121	94	50
TSTC-Waco	100	81	112
Southwest Texas State U.	96	80	66
Tarleton State U.	87	77	77
U. of North Texas	75	57	46
Sam Houston State U.	55	31	51
Texas Tech U.	50	45	38
UT-Arlington	47	43	36
Navarro College	41	52	31
Austin Community College	35	28	34
Stephen F. Austin State U.	29	26	30
Central Texas College	23	14	20
Blinn College	20	36	39
Temple Jr. College	18	20	23
Hill College	15	15	19
<b>Total Transfer Students</b>	<b>1950</b>	<b>2070</b>	<b>1673</b>



Receiving Institutions for MCC Students  
 Who Transferred in the Fall Semester After Graduating or Leaving MCC  
 Institutions with Fewer than 10 Students Per Year

Alvin Community College  
 Amarillo College  
 Angelina College  
 Angelo State U.  
 Baylor College of Denistry  
 Bee County  
 Brazosport College  
 Brookhaven College  
 Cedar Valley College  
 Cisco Junior College  
 College of the Mainland  
 Collin County Community College  
 Cooke County College  
 Corpus Christi State University  
 Del Mar College  
 East Texas State U.  
 Eastfield College  
 El Centro College  
 Galveston College  
 Grayson County College  
 Houston Community College  
 Howard County Junior College  
 Kilgore College  
 Lamar U -Orange  
 Lamar--Port Arthur  
 Laredo Junior College  
 Lee College Midwestern State U.  
 Midland College  
 Mountain View College  
 North Harris Montgomery C.C.  
 North Lake College  
 Odessa College  
 Panola  
 Paris Junior College  
 Prairie View A&M

Ranger Junior College  
 Richland College  
 San Jacinto Junior College  
 San Antonio College  
 South Plains College  
 Southwest Texas Junior College  
 St. Phillips college  
 Sul Ross State U.  
 Tarrant County Jr. College-North  
 Tarrant county jr. College-South  
 Tarrant County Junior College--North  
 Texasarkana College  
 Texas Woman's U.  
 Texas A&M-Galveston  
 Texas Southern U.  
 Texas A&M College of Vet. Medicine  
 Texas A&I Texas Southmost College  
 Trinity Valley Community College  
 TSTC--Harlingen  
 TSTC-Sweetwater  
 Tyler Junior College  
 UT--Nursing, Galveston  
 UT--School of Allied Health Sciences (Dallas, Galveston & San Antonio)  
 UT--Tyler  
 UT--Dallas  
 UT-El Paso  
 UT-Pan American  
 UT-Permian Basin  
 UT-San Antonio  
 Victoria College  
 Weatherford College  
 West Texas State U.  
 Western Texas College  
 Wharton County Junior College

Course Enrollment completed with a "C" or Higher  
By Term

TERM	COURSE GRADES			
	A, B, or C		D, F, or W	
	Count	%	Count	%
Fall '91	11,231	66.30	5,721	33.70
Fall '92	11,792	67.70	5,616	32.30
Fall '93	11,396	68.20	5,299	31.80
Fall '94	12,659	72.70	4,750	27.30
Spring '92	10,904	66.20	5,562	33.80
Spring '93	11,524	66.40	5,824	33.60
Spring '94	11,060	67.10	5,421	32.90
Summer1 '92	3,648	79.50	942	20.50
Summer1 '93	3,334	80.50	810	19.50
Summer1 '94	3,475	81.20	805	18.80
Summer2 '92	1,539	77.40	450	22.60
Summer2 '93	1,284	77.40	375	22.60
Summer2 '94	1,388	75.80	443	24.20
TOTAL	95,208	69.40	42,027	30.60

Students Achieving a GPA of 2.0 or Higher By Term					
GPA 2.0 Measure					
Term	2.0 or Higher		Less Than 2.0		
	Count	%	Count	Count	%
Fall 91	4339	73.9	1529		26.1
Fall 92	4455	73.1	1640		26.9
Fall 93	4197	73.2	1535		26.8
Fall 94	4122	74.9	1383		25.1
Total	17113	73.8	6087		26.2

CUMULATIVE GPA ANALYSIS AT THE END OF SPRING SEMESTER 1994

REPORT	TRANSFERRING SCHOOL	CLASS	UNIT	NUMBER OF STUDENTS	CUMULATIVE GPA AVERAGE	CUMULATIVE GPA STD ERROR
BY SCHOOL						
	MCLENNAN COMMUNITY COLLEGE			250	2.848	0.042
	BAYLOR UNIVERSITY			7665	2.955	0.006
	OTHER			979	2.755	0.022
BY CLASS						
	FRESHMAN			2291	2.832	0.014
	SOPHOMORE			2051	2.872	0.013
	JUNIOR			1869	2.949	0.013
	SENIOR			2683	3.046	0.01
BY UNIT						
		ARTS & SCIENCES		5095	2.917	0.008
		BUSINESS		2245	2.854	0.012
		EDUCATION		1098	3.046	0.016
		MUSIC		215	3.269	0.035
		NURSING		160	3.063	0.028
		UNIVERSITY SCHOOL		81	3.161	0.067
BY SCHOOL AND CLASS						
	MCLENNAN COMMUNITY COLLEGE	FRESHMAN		8	2.362	0.301
	MCLENNAN COMMUNITY COLLEGE	SOPHOMORE		38	2.743	0.127
	MCLENNAN COMMUNITY COLLEGE	JUNIOR		96	2.866	0.063
	MCLENNAN COMMUNITY COLLEGE	SENIOR		108	2.905	0.061
	BAYLOR UNIVERSITY	FRESHMAN		2239	2.844	0.014
	BAYLOR UNIVERSITY	SOPHOMORE		1780	2.907	0.013
	BAYLOR UNIVERSITY	JUNIOR		1453	3.001	0.014
	BAYLOR UNIVERSITY	SENIOR		2193	3.078	0.01
	OTHER	FRESHMAN		44	2.342	0.161
	OTHER	SOPHOMORE		233	2.622	0.05
	OTHER	JUNIOR		320	2.733	0.037
	OTHER	SENIOR		382	2.903	0.028
BY SCHOOL AND UNIT						
	MCLENNAN COMMUNITY COLLEGE	ARTS & SCIENCES		96	2.777	0.065
	MCLENNAN COMMUNITY COLLEGE	BUSINESS		79	2.795	0.071
	MCLENNAN COMMUNITY COLLEGE	EDUCATION		70	3	0.087
	MCLENNAN COMMUNITY COLLEGE	MUSIC		3	*	*
	MCLENNAN COMMUNITY COLLEGE	UNIVERSITY SCHOOL		2	*	*
	BAYLOR UNIVERSITY	ARTS & SCIENCES		4494	2.943	0.009
	BAYLOR UNIVERSITY	BUSINESS		1898	2.891	0.012
	BAYLOR UNIVERSITY	EDUCATION		906	3.057	0.017
	BAYLOR UNIVERSITY	MUSIC		192	3.294	0.036
	BAYLOR UNIVERSITY	NURSING		105	3.042	0.035
	BAYLOR UNIVERSITY	UNIVERSITY SCHOOL		70	3.141	0.074
	OTHER	ARTS & SCIENCES		505	2.713	0.032
	OTHER	BUSINESS		268	2.609	0.039
	OTHER	EDUCATION		122	2.995	0.056
	OTHER	MUSIC		20	3.106	0.135
	OTHER	NURSING		55	3.103	0.048
	OTHER	UNIVERSITY SCHOOL		9	3.299	0.145
OVERALL CUMULATIVE GPA				8894	2.93	0.006

NOTE: AN ASTERISK (\*) INDICATES THAT THE VALUE WILL NOT BE REPORTED (LESS THAN FIVE STUDENTS).