

CT 72

LEITH HILL

AND

WOTTON HOUSE.

1871.



# LEITH HILL AND WOTTON HOUSE.

1871.

*As Leith Hill Tower and Wotton House are objects of interest in the neighbourhood of Dorking, the following brief notice may be interesting to such persons as may visit the neighbourhood.*

---

## LEITH HILL TOWER, & c.

The summit of Leith Hill, nearly a thousand feet high, the most elevated spot in the south east of England, is situated five miles from Dorking, and is crowned by a Prospect Tower, commanding an extensive view over portions of Surrey, Sussex, Hants, Berks, Oxford, Buckingham, Hertford, Middlesex, Essex, Kent, and, by the aid of a glass, Wiltshire. On a clear day the heights of Highgate and the roofs of the Crystal Palace at Sydenham may be seen. The View from Leith Hill was admired by the Author of "Sylva," and is thought by many to surpass that from the Apennines over the Valley of the Arno, or that from Tivoli over the Campagna.

The Tower was completed in 1766, by Richard Hull, Esq., of Leith Hill Place, on a part of the waste

ground of Wotton Manor, granted to him by Sir John Evelyn, Bart., on certain conditions. It bears on the West side the following inscription, showing the purpose for which it was built.

Ut teram undique beatam  
 Videas viator  
 Hæc turris de longe spectabilis  
 Sumptibus Richardi Hull  
 Ex agro Leith Hill Place, Arm.  
 Regnante Georgio Tertio  
 Anno Domini MDCCLXVI.  
 Exstructa fuit  
 Oblectamento non sui solum  
 Sed vicinorum  
 Et omnium

“That, you, traveller, may see the Country happy on every side, this tower visible from afar was built at the expense of Richard Hull, Esq., of Leith Hill Place, in the reign of George III. A.D., 1766, not solely for his own pleasure but for that of his neighbours and everybody.”

Mr. Hull, was by his own direction buried under the Tower: and within the building on the East wall is a Tablet of Portland stone thus inscribed,

Underneath this floor lieth the body of  
 RICHARD HULL, Esq.,  
 a native of Bristol,  
 who departed this life, January 18th, 1772,  
 in the 83rd year of his age.”

Till about the year 1796, the building served as a Prospect Tower, in accordance with the intention of Mr. Hull: the privilege however was thought to be abused, and it was said that the Tower had become a harbour for vagrants and smugglers. So about 1796, a subscription having been raised among the neighbouring gentry, by W. P. Perrin, Esq., of Leith Hill Place, the entrance door was built up and the whole interior of the Tower filled with stone and cement: and it was found in this state in 1863, when the tower and the land adjoining were purchased by the present lord of the Manor. So solid was the cement that it was found impossible to re-open the old entrance and interior staircase: therefore a staircase-tower was built by the side of the old tower, in order to make the building available for its original purpose. Thus the Founder's wishes are now again respected; but the memorial tablet remains irretrievably buried beneath Mr. Perrin's cement.

#### WOTTON HOUSE, &c.

Wotton House is an irregular and heterogeneous mass of buildings and outhouses chiefly interesting as having been the birth place of John Evelyn the celebrated

author of "Sylva" who was here born October 31, 1620, and whose tomb is to be seen in Wotton Church.

In the new Library built in 1864, after the design of H. Woodyer, Esq., on the site of the West wing (destroyed by fire about 1800) may be seen various family and local relics and among these the three extant portraits of John Evelyn. Among the objects of interest is the Prayer-book used on the scaffold by King Charles I.

### THE PICTURE GALLERY.

In the new Picture Gallery are placed the most interesting of the Pictures that yet remain of John Evelyn's collection.

### THE DRAWING ROOM.

The Drawing Room was built by Sir Frederick Evelyn Bart., after the fire which consumed the West wing of the House. Several of the pictures now in the Drawing Room are family portraits of no general interest.

On the West wall the large portrait is that of Prince George of Denmark husband of Queen Anne. On the left is a portrait of Queen Anne, on the right one of Sarah, duchess of Marlborough.

On the South wall are various family portraits.

The centre portrait West of the fire place is of a gentleman Age 57. A. D. 1596.

On the East wall of the Drawing Room is a large portrait (by Sir Martin Shee) of John Evelyn, Esq., of Wotton who succeeded to the Wotton Estate in 1814, bequeathed to him by Lady Evelyn widow of Sir Frederick Evelyn Bart. On the right of this portrait is that of Mrs. Godolphin her left hand resting on a slab supporting an urn. Mrs. Godolphin is often affectionately mentioned by John Evelyn in the Diary and elsewhere. Her life from a M S written by John Evelyn has been edited by the present Bishop of Winchester (Wilberforce) In the Library may be noticed a bible annotated by John Evelyn "to be given after my decease to Mary Blagge since the wife of Sidney Godolphin, Esq., if she survive me". On the left of the portrait by Sir Martin Shee is that of Lady Godolphin and her son.

In the Drawing-room Bay (East side) under a picture of a serpent butterfly, &c. is a view of Ballinacourty county Tipperary Ireland (1831.) the seat of James Hewitt Massy Dawson, Esq., and now (1871.) of his son George Massy Dawson, Esq., in the Bay (West side) is a Picture of a Stray Sheep on a common by

R. Redgrave, Esq., R. A., the scene is taken from Abinger Common near Wotton, 1857.

### THE DINING ROOM.

The Dining-room is old and with the Entrance-hall was probably altered in 1646. Next to the entrance door from the Drawing Room is a portrait of Sir Frederick Evelyn, on a grey horse. The horses and dogs in this room belonged to Sir Frederick Evelyn, and are drawn by Gilpin. Among them is a picture of Sir Frederick's favorite horse Ploughboy (a grey horse with a groom.)

The other pictures in this room are from John Evelyn's collection. Among them are several by Hemskirk.

Behind the Colonnade is a semicircle of Portraits—Archbishop Tillotson, Lady Godolphin, the Earl of Godolphin, &c. Opposite to Tillotson and next to the garden door is a portrait of John Evelyn's son John, holding a book in his hand.

### THE GARDEN, & c.

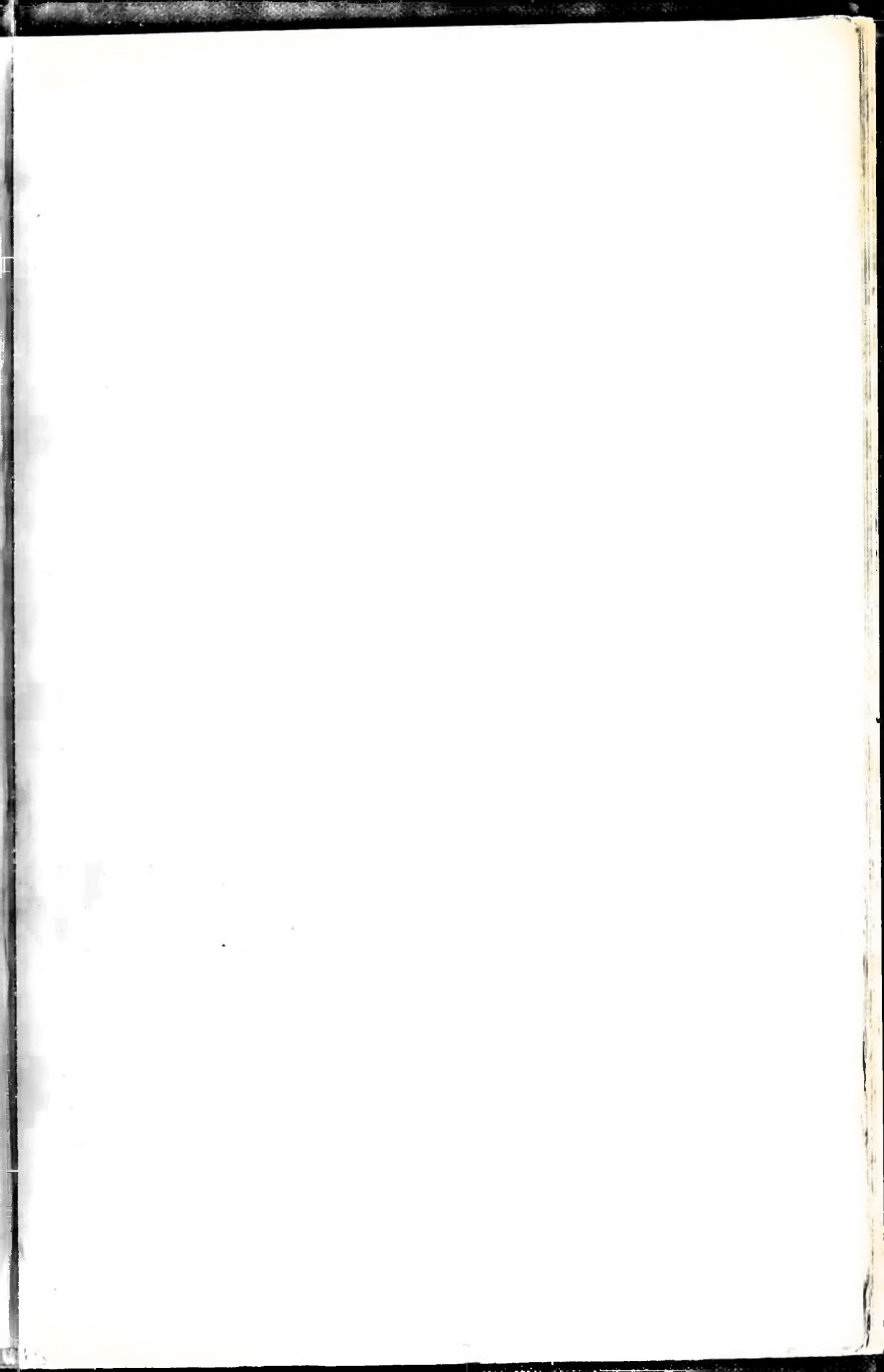
The Garden and garden front of the house are much the same as in the time of Evelyn, as will be seen on comparison with John Evelyn's own drawings in the library.



The Mount cut into terraces, the Temple or "grotto" with its portico, the fountain, &c. are mentioned in the Diary. Below what is now the Swimming-bath, and on the right side of the stream is the spot where John Evelyn built "a study" in his youthful days.

The Estate of Wotton continued in the hands of John Evelyn's direct descendants till the year 1812, when Sir Frederick Evelyn dying without issue bequeathed the estate to his widow and she dying in 1814 returned the estate to the family by bequeathing it to John Evelyn, Esq., (whose portrait by Sir Martin Shee, is in the drawing room) descended from George Evelyn of Wotton (the first purchaser of the Estate) through Sir John Evelyn Knight of Godstone, the former being the grandfather, the latter the kinsman and friend of the author of "Sylva".







Capt. Ritchie said  
the Old Columba Hotel.

"People proud"  
but big poor  
own 2/6



only 2/6  
per day

MACLURE & MACDONALD'S

## ILLUSTRATED GUIDES TO THE HIGHLANDS,

BY WILLIAM KEDDIE, ESQ.

WITH MAPS AND NUMEROUS ILLUSTRATIONS, ACCOMPANIED WITH NOTICES OF THE GEOLOGY AND NATURAL HISTORY OF THE DISTRICT, AND AUTHENTIC INFORMATION FOR TOURISTS, &c., &c.

- No. I. GLASGOW TO OBAN, (THE ROYAL ROUTE,) 1s. 6d.  
II. OBAN TO STAFFA AND IONA, 1s. 6d.  
III. OBAN TO FORT-WILLIAM, BY BALLAHULISH AND GLENCOE, 1s. 6d.  
IV. FORT-WILLIAM AND BANAVIE TO INVERNESS, BY THE CALEDONIAN CANAL, FORT-AUGUSTUS, LOCH NESS, FALL OF FOYERS, &c., &c., 1s. 6d.  
V. OBAN TO THE ISLE OF SKYE, THE CUCHULLIN MOUNTAINS, LOCH CORUIK, GAIRDOCH, LOCH MAREE, &c., TO INVERNESS, 2s.  
*The above, bound together in Cloth, forming a Complete Guide to the Western Highlands, 8s. 6d.*
- 
- VI. INVERNESS OR GLASGOW TO ABERDEEN, DEESIDE, BALMORAL, BRAEMAR, LOCHNA-GAR, GLENTILT, BLAIR-ATHOLE, KILLIECRANKIE, AND DUNKELD, 2s. 6d.  
VII. EDINBURGH AND GLASGOW TO STIRLING, DOUNE, CALLANDER, LAKE OF MENTEITH, ABERFOIL, THE TROSACHS, LOCH KATRINE, AND LOCH-LOMOND, 1s. 6d.
- ~~~~~

Duke of Argyll unapologetically by  
natives without Duke's fish. Rether  
gave them trout - Duke's? they were with  
Old "troller".

Proposals for 1st - man goes back turned  
~~Calceola~~ - "Who's in this?" -

On ~~Windy~~  
Black Death

cho leas a?

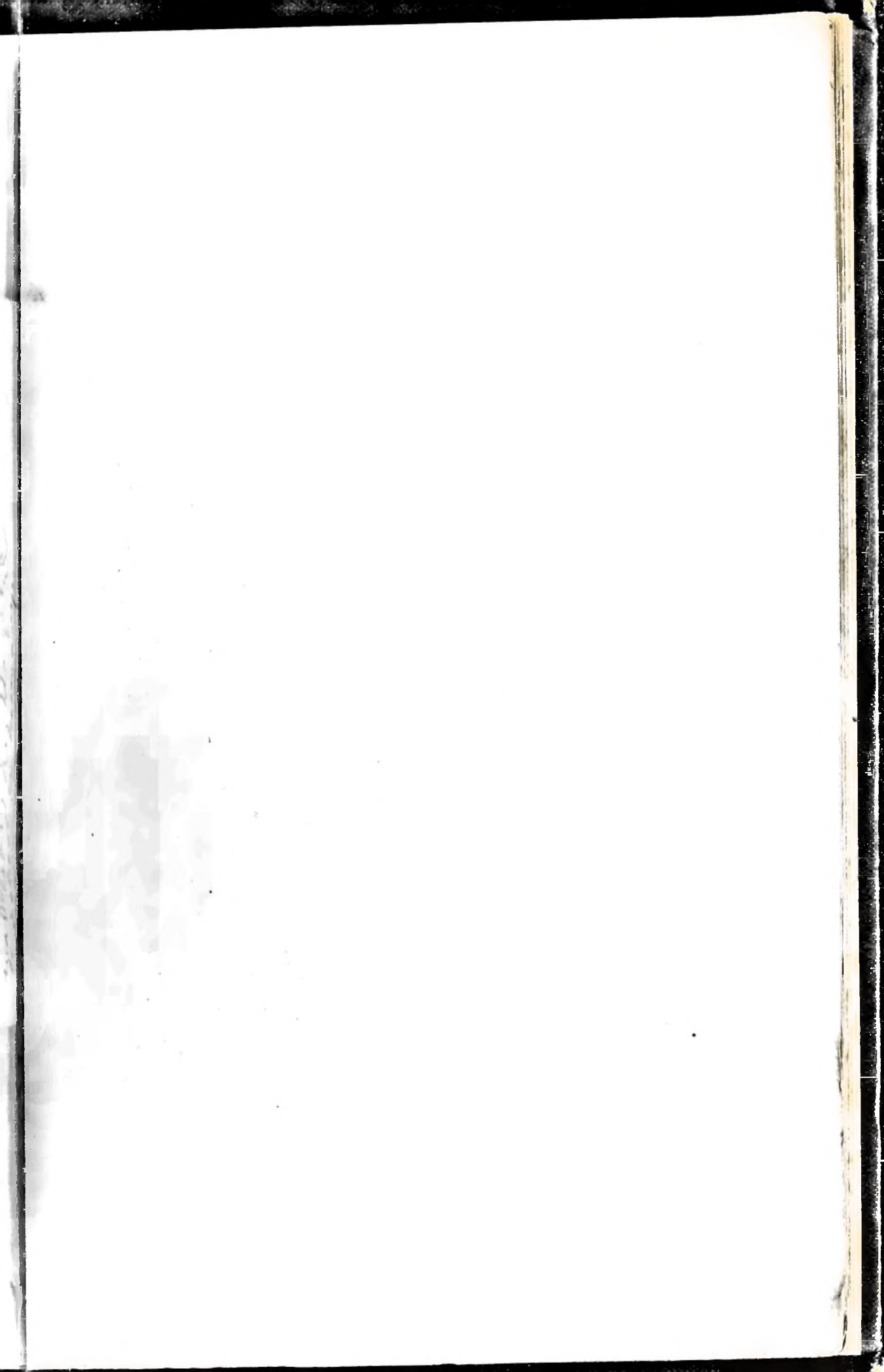
~~cho leas~~

(Kiss my love & come away  
(Thrice)

At last farewell to Funnery

The Gaelic indicates turning this  
back to where a place

~~It is a~~  
Pitcher Tough being  
I was unfortunately  
in offering money - he  
was taking his daughter  
to school in Germany.



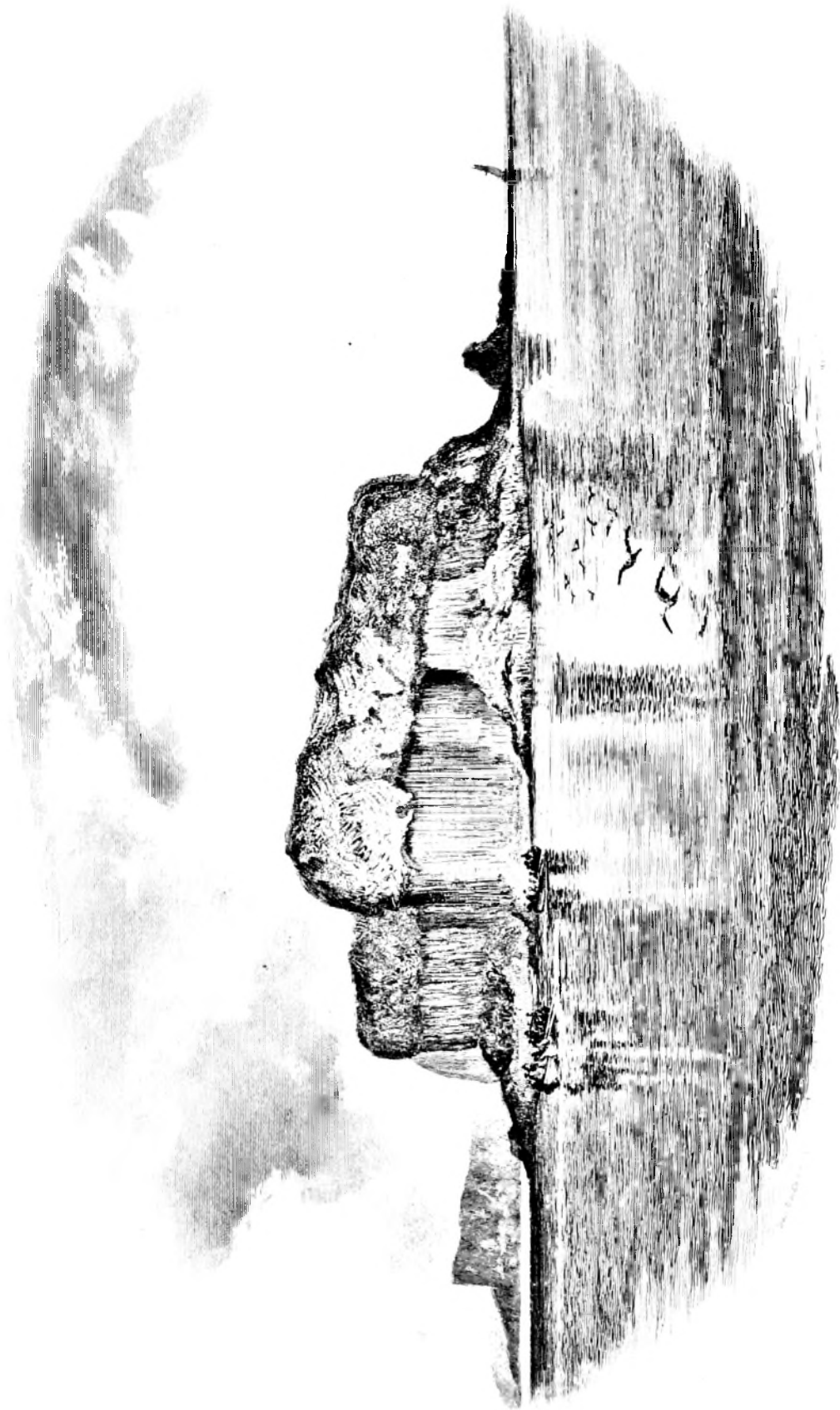


PLATE 10

Published by MacLure & McDonald, Engravers & Lithographers, to The Queen, Glasgow & London