

NILEHI

Reflections

1944

Property of Frank Zeller

"One of My Best Friends"

Bob Jammann

To good old Frankie
Bill Kardenbergh
Walter Gutman

"Good Die"
Best of Luck to
a swell fellow
Bob Rom

Loads of luck
See
Dinacchia

To the best speaker of our
Oral English Class

Don
Nepstad

Trust comes love
Then it's marriage
Here comes the
With a party
Jim

For our boy
John Barber

Have Hankinson Class
Frank
a crazy dot
Penny
and
Harry Mueller

For
Benly Schwab

Don
Good luck to a swell guy
Ed Sell #4

Some boy
Roy Fel

To a swell guy
who tackled the
whole U.S. project
for a
Love

Don
To my little
window buster
Frankie boy
chew chow
Train
a swell guy
Good Luck
Billie Dugger

Sig Heel
M. Zolus

To a Good classmate
Herb Johnson

To a man that works hard
at the lumber yard + also at
Bill Hoffmans, even though he
has to stay up until 12:00. A
really swell fellow.
Albert Lukas

Lots of luck
in the future
in Jan. Handlisch

P.S. He is also a good 1st baseman,
pitcher, and also a good manager,
although we did lose 14 to 7.

To a speedy
water basketball
player - see earlier

Two a guy
with his head
in the ground
up to John

George
Beschke
Mamie
Strub

come up to
El Loucho
Jim
Chinea
some time

To a swell kid and friend
Lots of luck always.
Henry Menke

To a fellow
"German"
James
Hansen

To our Window Kuster
Betsy Daibord

Best of
Luck

John Reikenberg
remembered me!

Loads of Luck
classmate!

To P. Rush:
a great 4 minute
mile. Tell!

Syd Mayer

To a real
friend and pal
Don Johnson

Luck
Bill Stinson

For Reference

Not to be taken from this room

To a kid
laught with
for a year in
distories
Lorraine Manderville

To a friend who
is always a friend
Norman
G. Lauer

"Best of Luck"
Bill Soles

To a guy that
is swell
Ron

Gallop

To a damn good
athlete "Steve" M.

To a Victory Brain
and a swell guy
"Bud" Dicker

lots of luck Always
Rais Gump

To the best firstbase man
in the majors?
Charles Russell

To a swell guy &
hope we beat Red
Lick always
Laird
Rabinson

To a swell guy +
man Simili

Handwritten notes on the left margin, including "To a swell guy" and "To a swell guy + man Simili".

To a tough
guy so he thinks
Load of such
- Walby Puhler

To zinc
Bill Guenther

To you lots of luck
Jerry Dahm

Joe Tott

Jerry Dahm

To the "swell" guy who
helped me pass Biology
Thanks Frank

Alton Robertson

The only reason
I passed Biology
thanks

Bob Margulies
Lambert
Bill Otter

Good luck, always
James Friedman

Jim Mc Neely

To a good guy
David Quinn

To a swell fellow
Don Koch



NILES TOWNSHIP
HIGH SCHOOL

*Nilehi
Reflections*

**NILES TOWNSHIP
COMMUNITY HIGH SCHOOL**

SKOKIE, ILLINOIS

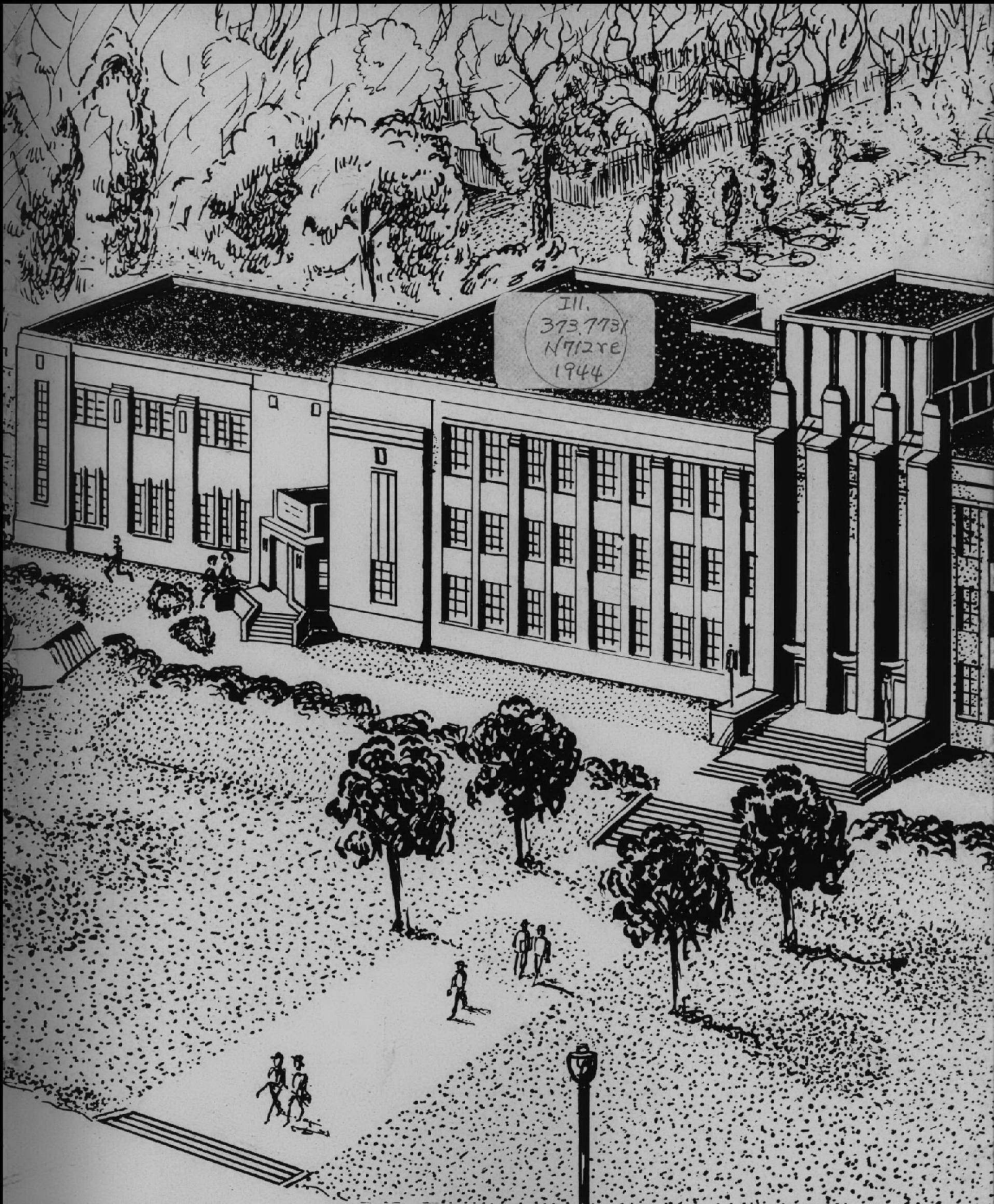
SKOKIE PUBLIC LIBRARY



Lois Lagershausen

1944

CITIZENS



OF TROY

8212248

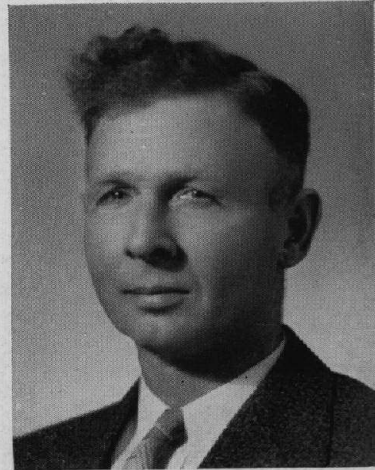
Trojan Deities



Mack D. Falknor
Morton Grove



Mildred E. Tess
President
Skokie



Charles N. Miller
Secretary
Lincolnwood



Peter Kluesing
Niles



Ivan Paroubek
Skokie

The Trojans of old believed that the destiny of their lives was shaped by the chance will of many gods and goddesses—some friendly, some not.

We Trojans of Nilehi are more fortunate! Five people—all united in a friendly, helpful interest—are elected to direct the destiny of N. T. H. S. The people of the township have entrusted to these five representatives the responsibility of providing the best educational opportunities so that, like the men of Troy, we modern Trojans may become "scholarly, brave, and true."

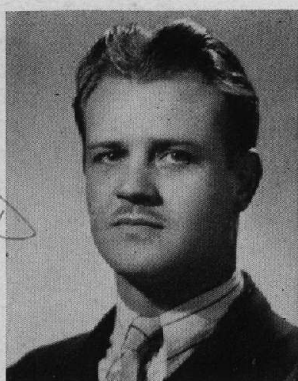
Our Trojan Leader



A. L. Biehn, Superintendent

The leader of the Trojans, Dr. A. L. Biehn, has the challenging task of guiding high school students through these perilous times. His prime interest is in education for victory—victory in winning the war, in winning the peace, and in establishing democratic ideals throughout the world. The educational program at N.T.H.S. has been developed to train us to understand and to follow the principles, on which our country was established. We appreciate Dr. Biehn's ceaseless efforts in this direction.

Trojan Counselors



John C. Benette
Biology, Senior Adviser
B.S., University of Chicago;
M.A., Northwestern
University

Margaret De Booy
Mathematics, Junior
Adviser
B.S., Northwestern
University;
M.A., Columbia University

D. W. Flagg
Industrial Education
B.A., Western State Teachers
College;
M.A., Northwestern
University

Adelaide Berry
English, French, Head of
English Department
A.B., Indiana University;
A.M., Radcliffe College;
Diplome from the Universite
de Poitiers, France

**Jesse Walter
Dees, Jr.**
Geography, History
A.B., Illinois Wesleyan
University;
M.A., Northwestern
University

Marie Green
Bookkeeping, Typing,
Business Training, Head
of Commerce Department
B.S. and M.A., Northwestern
University

**Clyde Wilbur
Blanke**
English, Journalism
A.B., Drury College;
A.M., University of Chicago

Frieda Ellerbrake
English
A.B., Knox College;
A.M., University of Southern
California

Grace G. Harbert
Problems
B.S., University of Illinois;
M.A., University of Minnesota

Clifford W. Collins
Band, Orchestra
B.Mus., Connecticut National
School of Music

Ruth B. Esch
Dramatics, Radio
B.O., M.O., Artist, Chicago
School of Expression and
Dramatic Art

Florence Harrison
General Science, Biology,
Head of Science Depart-
ment
B.S., South Dakota College;
Ph.M., University of
Wisconsin

*With
best wishes to
Frank
M. J. [unclear]*

G. G. Harbert

Our Faculty



Peggy Joan Hausse
Spanish, English
B.S. and M.A., Northwestern University

Dorothy Hinman Hind
Mathematics
A.B. and A.M., University of Chicago

Marvin H. Ihne
History, Sophomore Adviser
A.B., Illinois College; M.A., University of Illinois

Ada Immel
Shorthand, Business Training
B.A., Lawrence College; M.A., University of Iowa

Harold Isaacson
Physical Education, Athletics, Head of Boys' Athletic Department
B.S., Western Michigan State Teachers College

Helen Marie Johanns
Typing, Business Law, Office Practice
B.E., Whitewater State Teachers College; M.A., Northwestern University

Norman C. Kent
General Science
B.S. and M.S., University of Illinois

Clara A. Klaus
Vocal Music, Head of Fine Arts Department
B.S. and M.S., Northwestern University

Theresa E. Kranz
History, Head of Social Science Department
B.A. and M.A., University of Minnesota

Lois D. Lamberg
History, Civics
B.A., Beloit College; M.A., Northwestern University

A. V. Larson
Woodshop, Mathematics
B.S., Stout Institute; M.A., Northwestern University

Alice Line
Home Economics, Head of Home Economics Department
A.A., Stephens College; B.S., University of Nebraska

Trojan Counselors



Louise Myers



Doris Sayre



Edith Lytle
 Mathematics, Head of
 Mathematics Department
*B.A., University of Illinois;
 Ph.M., University of
 Wisconsin*

C. A. Nesmith
 Physics, Chemistry,
 Geometry
*B.S., Central Y.M.C.A.
 College;
 M.S., University of Chicago*

Mildred A. Schaefer
 Physical Education,
 Swimming, Head of Girls'
 Athletic Department
*B.P.E., Normal College of the
 American Gymnastic Union;
 B.S.Ed. and M.S., DePaul
 University*

L. Robert Mackey
 Electrical Shop, Auto
 Shop, Mechanics
B.A. and B.S., Lewis Institute

Lucille Ronalds
 English
*B.A., Mount Holyoke College;
 M.S., University of Illinois*

Charles W. Seldon
 Woodshop
*B.S. and M.A., University of
 Minnesota*

Clement F. Meier
 Printing, Civics
Ph.B., DePaul University

Marjory Ronalds
 Latin, English, Freshman
 Adviser
*A.B., Vassar College;
 M.A., Columbia University*

**Lorraine J.
 Spikings**
 Physical Education,
 Swimming, Civics
*B.E., Northern Illinois State
 Teachers College;
 M.A., Northwestern
 University*

Louise Myers
 Librarian
*A.B., Central College;
 B.S. in L.S., George Peabody
 College for Teachers*

Doris Sayre
 English
*A.B., James Millikin
 University;
 M.A., University of Illinois*

John G. Wilkins
 Art, Mechanical Drawing,
 Head of Industrial Arts
 Department
*B.S., Kansas State Teachers
 College;
 B.A.E., School of Art
 Institute*

They Work Like Trojans



Agnes E. Harte
Office Manager



Alice Suckow
Bookkeeper



Viola Rentzsch
Office Clerk, Sept.-Feb.



Adele Bartz
Office Clerk, Feb.-



Thelma Cline, R.N.
School Nurse



Cafeteria

From left to right: Mrs. Frieda Harms, Mrs. Emma Gabel, Mrs. Alice Kluesing, Mrs. Harriet Fiech, Mrs. Esther Fountaine, and Mrs. Katheline Kestenholtz, cafeteria manager.

Custodians

From left to right: Harry Boyd, Charles Ide, Charles Brunke, and Charles Ahrens.

Not Pictured

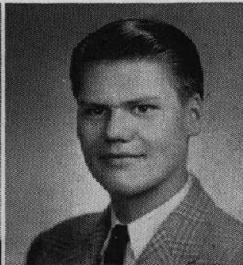
Miss Carrie Schoening, matron of the girls' locker room; Peter Roess, night custodian; and Peter Kirscht, night watchman.

Trojan Noblemen

See remember you-always Frank
"Bobbe"

Barbara Abbott

Synchronized Swim 4. Homeroom President 2. See Chicago Club 3. Foreign Language Club 2, 3. G.A.A. 1. Pep Club 2, 3. First Aid 3. Color Guard 3, 4. Water Carnival 1, 2, 4. Style Show 4. Student Activity Committee 4.



Tom Allen

Football 1, 2. Bowling 2. Tumbling 2, 3, 4. Pep Club 3. Ushers and Monitors Club 3. Photography 4.

Lucille M. Anderson

Bowling 2, 3. Junior Council 3. Homeroom President 2. Newspaper 3. Yearbook Staff 3. Junior Prom Committee 3. See Chicago Club 3. Pep Club 2. Ushers and Monitors Club 4.

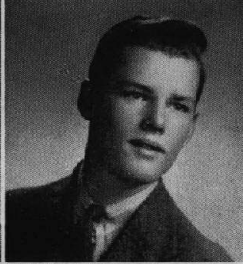
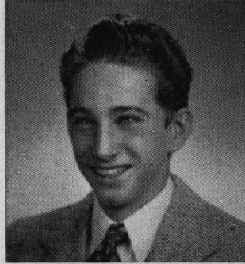


Robert Anderson

Transferred from Senn H. S. 3. Baseball 3, 4.

Robert G. Arnold

Transferred from St. George's H. S. 2. Football 3, 4. Baseball 4. Swimming 2. Horseback Riding 2. Track 2. Forum 4. Homeroom Treasurer 2. Junior Council 3. Junior Prom Committee 3. See Chicago Club 3. Foreign Language Club 2, 3. Pep Club 2, 3.

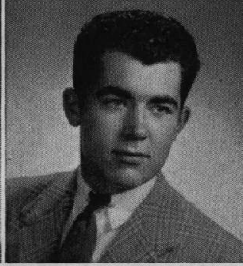


Richard Asmussen

P.A.P. Club 1. Ushers and Monitors Club 2, 3.

Lois Baity

Homeroom Vice-President 1. G.A.A. 1, 2, 3, 4. Mixed Chorus 1. Style Show 4. See Chicago Club 3. Foreign Language Club 3, 4.



Dick Barber

Transferred from New Trier H. S. 3. Synchronized Swim 3. Homeroom President 4. Play ("Old Doc"). Ushers and Monitors Club 3.

Shirley Barcklay

Transferred from Amundsen H. S. 3.



Glenn Barg

Band 1, 2.

D. Jeane Bates

Tennis 3. Forum 1, 2. Homeroom Secretary 2. Junior Council 3. See Chicago Club 3. Water Carnival 2. Scenery 2. Foreign Language Club 2.

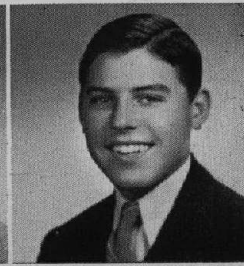
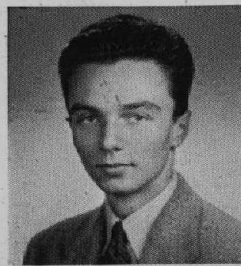


Don Baumhart

Seniors of 1944

Robert E. Baumhart

Football 1. Basketball 1, 2. Tumbling 4. Forum 2, 3, 4. Homeroom President 4. See Chicago Club 3, 4. Foreign Language Club 2, 3. P.A.P. Club 3, 4.

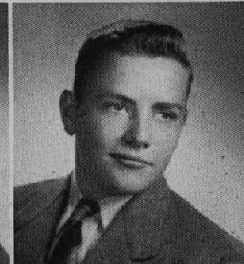


Richard Becker

Photography 3, 4.

Patricia M. Bennett

Bronze Pin 4. Bowling 3. G.A.C.S. 3. Forum 1. Homeroom President 2. Secretary 3. Vice-President 4. Newspaper 3. Yearbook Staff 4. See Chicago Club 3. Pep Club 2. G.A.A. 1, 2, 3, 4. Play Day 1. Camp 1. Executive Board 4.

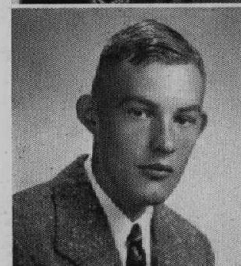


Patrick Bennett

Forum 4. See Chicago Club 3. Ushers and Monitors Club 2.

Robert Berkow

Football Manager 3, 4. Baseball 2, 3, 4. P.A.P. Club 2, 3, 4.

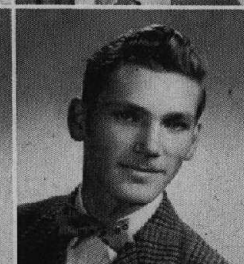


Virginia A. Berthold

Newspaper 3. Foreign Language Club 2, 3. G.A.A. 1, 2. Pep Club 2. Glee Club 1, 2. Water Carnival 1. High School Studio Party 1.

Lorraine E. Betlinski

Twirling 2. G.A.A. 1. Mixed Chorus 1. Ushers and Monitors Club 3.



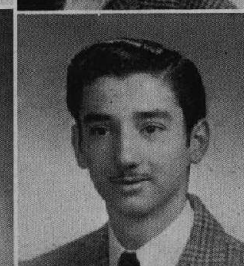
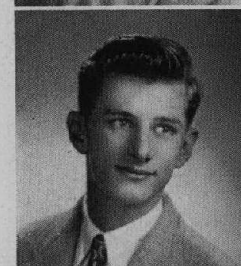
**Quentin Hafford
Blewett, Jr.**

Football 1, 2, 3, 4. Band 1, 2, 3, 4.

*Quentin
Blewett*

Lee S. Bollow

Tumbling 1. Homeroom Secretary 1.



Gus C. Boznos

Track 1, 2, 3, 4. Orchestra 1, 2, 3. Ushers and Monitors Club 4.

Betty Bray

Silver Pin 4. Bronze Pin 3. D.A.R. Award 4. Youth Conference Representative 4. Synchronized Swim 1, 2, 3, 4. Lifesaving 3. G.A.C.S. Lieutenant 3. Homeroom President 1. Forum 3, 4. Secretary 3. Parliamentarian 4. Dance Committee 3, 4. Foreign Language Club 2, 3. Secretary 3. G.A.A. 1, 2, 3, 4. Play Day 1. Camp 2. Executive Board 3, 4. Pep Club 1, 2, 3. Leaders 3, 4. Water Carnival 1, 2, 3, 4.

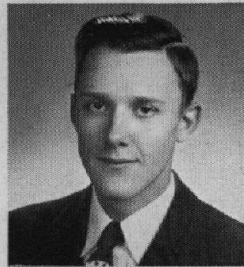


Jane Irene Breckenridge

Horseback Riding 1. Twirling 1, 2. G.A.A. 1, 2, 3, 4. Ushers and Monitors Club 2. Glee Club 1. Style Show 1.

Gordon W. Brown

Transferred from Senn H. S. 1. Junior Prom Committee 3. Glee Club 2. Band 1, 2, 3, 4. Orchestra 1, 2, 3.



Joseph Byron

Photography 3.

Mickey Callmer

Synchronized Swim 1, 2, 3, 4. Lifesaving 2. Bowling 1. Junior Council 3. Homeroom President 1. Junior Prom Committee 3. Photography 1. See Chicago Club 2. Foreign Language Club 1. G.A.A. 1, 2, 3, 4. Play Day 1. Camp 1. Ushers and Monitors Club 1. Pep Club 1, 2, 3. Leaders 2, 3, 4. Water Carnival 1, 2, 3, 4. Student Activity Committee 4.



Violet Helen Carlson

Home Nursing 2. Foreign Language Club 2, 3. G.A.A. 1, 2, 3. Pep Club 2. Ushers and Monitors Club 2. Style Show 4.

Theodore L. Carlyle

Football 1. Glee Club 1. Foreign Language Club 3. Student Activity Committee 4. Forum 4.



Delores Chapman

Synchronized Swim 1, 2, 3, 4. Captain 4. Horseback Riding 2, 3. Twirling 1. Lifesaving 2, 3. Bowling 1, 2, 3. Tumbling 1, 2, 3, 4. Homeroom Vice-President 1. Treasurer 4. G.A.C.S. 3. First Aid 3. See Chicago Club 3. Foreign Language Club 4. G.A.A. 1, 2, 3, 4. Camp 3. Leaders 3, 4. Glee Club 1. Water Carnival 1, 2, 3, 4. Scenery 4.

Mary L. Clark

Transferred from Senn H. S. 1. Foreign Language Club 2. Glee Club 1. Mixed Chorus 2.



Irene G. Clarkens

Forum 1. See Chicago Club 3. G.A.A. 1. Pep Club 2. Mixed Chorus 1, 2. Style Show 2, 4.

Marion Conrad

Gold Pin 4. Silver Pin 3. Bronze Pin 2. Homeroom Secretary 2. Vice-President 3. See Chicago Club 3. G.A.A. 1, 3, 4. Water Carnival 1. Style Show 2.



Tom Cook

Bronze Pin 4. Swimming 1, 2, 3, 4. Captain 4. Synchronized Swim 2, 3, 4. Homeroom Secretary 1. P.A.P. Club 2, 3. Ushers and Monitors Club 1, 2, 3. Band 1, 2. Water Carnival 2, 3, 4.

Laura Copeland

Transferred from Maine H. S. 3. Synchronized Swim 4. Lifesaving 4. See Chicago Club 3. Foreign Language Club 3. G.A.A. 3, 4. Student Activity Committee 4. Water Carnival 3, 4.

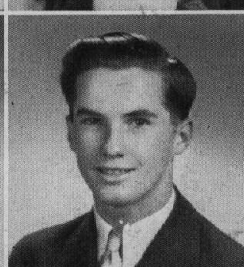


Lois Margaret Corrin

Transferred from St. Scholastica H. S. 3. See Chicago Club 3. Foreign Language Club 3, 4. Mixed Chorus 3. Student Activity Committee 4. High School Studio Party 4.

Mary Coulter

Foreign Language Club 2, 3. G.A.A. 1, 2. Ushers and Monitors Club 4. Pep Club 2, 3. Glee Club 1, 4. Mixed Chorus 1. Girls' Sextette 4. Choir 4. Style Show 3. Student Activity Committee 4. High School Studio Party 1, 4.



James Coursey

Track 1, 2, 3. Forum 1. Homeroom Secretary 1. P.A.P. Club 1, 2, 3, 4.

Laura Joan Cutsler

Silver Pin 3. Bronze Pin 2. Horseback Riding 1, 2. Bowling 1. G.A.C.S. 3. Junior Red Cross Council 3, 4. First Aid 3. Newspaper 3, 4. Yearbook Staff 3, 4. Forum 3. Homeroom President 1. See Chicago Club 3. Foreign Language Club 2, 3. G.A.A. 1, 2, 3. Pep Club 1, 2. Glee Club 1, 2. Treble Choir 3. Girls' Sextette 3. Trio 4. Choir 3. High School Studio Party 1, 3. Citizens of Tomorrow 1.

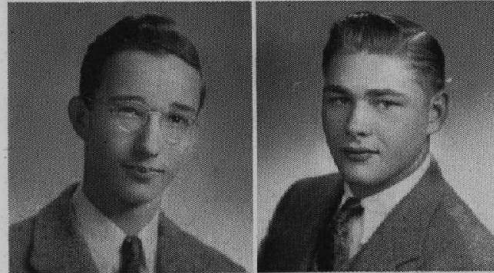


Thomas A. Davidson, Jr.

Bronze Pin 2. Football 1, 2. Swimming 1, 2. Synchronized Swim 2, 3, 4. Captain 4. Homeroom Vice-President 1. Secretary 2. Junior Council 3. Junior Prom Committee 3. Photography 2, 3, 4. Foreign Language Club 3, 4. Ushers and Monitors Club 1. Radio Code 3. Water Carnival 1, 2, 3, 4. Student Activity Committee 4.

Richard T. Denker

Transferred from Von Steuben H. S. 2.

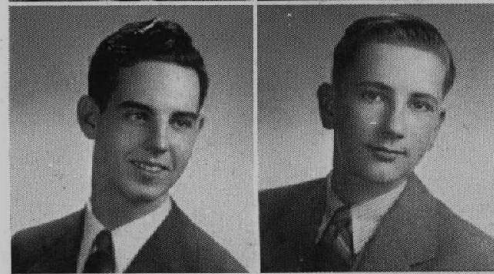


Robert Denley

Football 1, 2, 3, 4.

John T. Desmond, Jr.

Baseball Manager 2, 3, 4. Foreign Language Club 3.

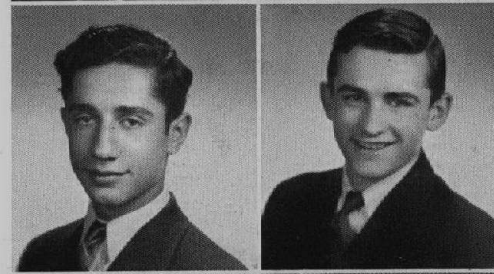


Francis A. Didier

Transferred from St. George's H. S. 2.

Mario Dinelli

Baseball 2, 3, 4. Forum 1.

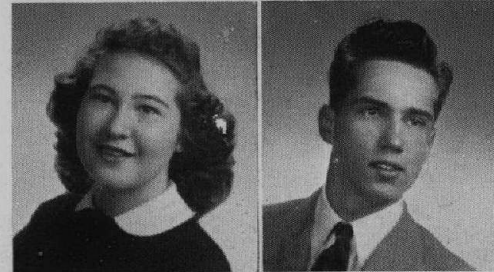


Carl F. Domas

Transferred from Pontiac H. S. 2. Baseball 2. Basketball 2. Foreign Language Club 2.

Marion L. Eichelkraut

Horseback Riding 1, 2. Lifesaving 3. G.A.C.S. 3. Homeroom Vice-President 4. Home Nursing 2, 3. Active Red Cross Member 3. Newspaper 3. Yearbook Staff 3. See Chicago Club 3. Foreign Language Club 2, 3. G.A.A. 1, 4. Pep Club 2. Leaders 3, 4. Water Carnival 3.



Bob H. Ellis

Transferred from Sullivan H. S. 2. Bronze Pin 3. Football 3, 4. Track 2, 4. Tumbling 4. Newspaper 3, 4. Yearbook Staff 3, 4. See Chicago Club 3. Pep Club 3.

Betty Lorene Farr

Silver Pin 4. Bronze Pin 2. Synchronized Swim 1, 2, 3. Bowling 3. Junior Council 3. Newspaper 3. Yearbook Staff 3. Junior Prom Committee 3. See Chicago Club 3. Foreign Language Club 1, 2. Pep Club 1, 2, 3. G.A.A. 1, 2. Play Day 2. Camp 1. Cheerleader 2, 3, 4. Band 2, 3, 4. Water Carnival 1, 2, 3, 4. Plays ("Old Doc," "And Came the Spring").



Robert W. Farrell

Band 1, 2, 3, 4. P.A.P. Club 1, 2.

John Edward Forbes

Swimming 1. Lifesaving 3. Track 2. Photography 4. Band 3.



James Freres

Football 2. P.A.P. Club 2.

Muriel G. Fullhard

Homeroom Secretary 3. Stamp Chairman 3, 4. Pep Club 2. Mixed Chorus 1. Style Show 2. Student Activity Committee 4.



Jarvis J. Gafford

Transferred from Steinmetz H. S. 1. Football 1, 2, 3, 4. Swimming 3. Track 1, 2, 3, 4. Forum 2. Foreign Language Club 1, 2. Band 1, 2. Orchestra 1. Color Guard 2, 3. Captain 3. Play ("And Came the Spring").

Alma L. Gatzke

Gold Pin 4. Silver Pin 3. Bronze Pin 2. First Aid 3. Foreign Language Club 2. 3. G.A.A. 1, 2. Glee Club 1, 2, 3. Style Show 1. High School Studio Party 1.



Bruce Gifford

Transferred from Senn H. S. 2. Silver Pin 4. Bronze Pin 3. Football 2, 3, 4. Baseball 2, 3, 4. Homeroom President 4. Junior Red Cross Council 3. Foreign Language Club 2, 3. President 3.

Charles Gockenbach

Football 1, 2, 3, 4. Baseball 1, 2, 3, 4. Captain 3. Basketball 1, 2, 3, 4. Captain 4. Tumbling 1, 2, 3, 4. Homeroom President 2. Junior Council 3. Junior Prom Committee 3.

Chuck Gockenbach

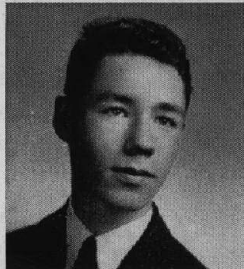


Joyce Graefen

Transferred from Senn H. S. 3. Bronze Pin 4. Foreign Language Club 3, 4. Mixed Chorus 3. Student Activity Committee 4.

Scott Gregory

Transferred from Vero Beach H. S., Vero Beach, Florida, 3.



Betty Grosse

See Chicago Club Captain 3. G.A.A. 1, 2.

Doris May Hampton

Gold Pin 4. Silver Pin 3. Bronze Pin 2. Homeroom President 1. Junior Council 3. Newspaper 4. Junior Prom Committee 3. See Chicago Club 3. Foreign Language Club 2, 3. G.A.A. 1, 2. Play Day 2. Pep Club 2. Orchestra 1, 2, 3, 4. Color Guard 3, 4.

Doris May Hampton



Helen J. Handler

Band 4. Orchestra 4. Activities Club 1.

Hortense E. Harles

Transferred from Senn H. S. 2. Bronze Pin 4. Homeroom Vice-President 3. Newspaper 3. Yearbook Staff 3. Foreign Language Club 2. G.A.A. 2. Orchestra 2, 3, 4. Student Activity Committee 4.



Leroy Harms

Mixed Chorus 1. Band 1, 2, 3.

Leota LaVerne Harper

Bronze Pin 2. Forum 2. Junior Red Cross Council 3, 4. First Aid 3. Newspaper 3, 4. Yearbook Staff 3, 4. Foreign Language Club 2, 3. G.A.A. 2, 3. Glee Club 1, 2. Band 3, 4. Orchestra 3, 4. Trio 4. Choir 3, 4. Mixed Double Quartette 4. High School Studio Party 2, 3, 4. Citizens of Tomorrow 3.

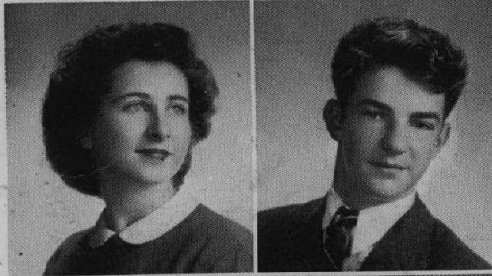


John Harrer

Football 1, 2, 3, 4. Most Valuable Player Award 4. Basketball 1, 2, 4. Track 2. Junior Council 3. Senior Cabinet 4. Homeroom President 1. Secretary 2. Junior Prom Committee 3. Pep Club 2, 3.

Harriet M. Hart

Silver Pin 3. Bronze Pin 2. Synchronized Swim 3. Lifesaving 1. Senior Cabinet 4. Forum 3. Homeroom President 1. Active Red Cross Member 3. Newspaper 3, 4. Yearbook Staff 3, 4. Foreign Language Club 2, 3, 4. G.A.A. 2, 3. Play Day 2. Camp 2. Pep Club 2. Mixed Chorus 1. Band 1, 2, 3, 4. Orchestra 1, 2, 3, 4. Flute Quartette 4. Water Carnival 1, 2, 3.

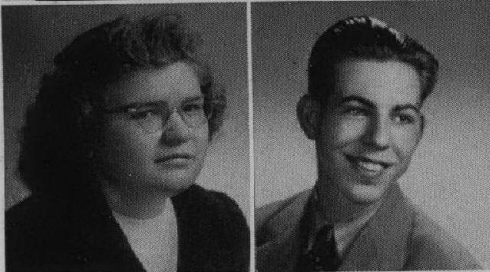


Peter Hegarty

Swimming 1, 2, 4. Synchronized Swim 1, 2, 3, 4. Forum 1, 2. Homeroom Treasurer 1, 2. Junior Council 3. Junior Prom Committee 3. Band 1, 2, 3, 4. Water Carnival 1, 2, 3, 4.

Betty Ann Heiniger

Lifesaving 3. Synchronized Swim 4. Homeroom Vice-President 1. Secretary 2. Foreign Language Club 2. G.A.A. 2, 3. Water Carnival 1, 4. Student Activity Committee 4. High School Studio Party 1. Glee Club 1.

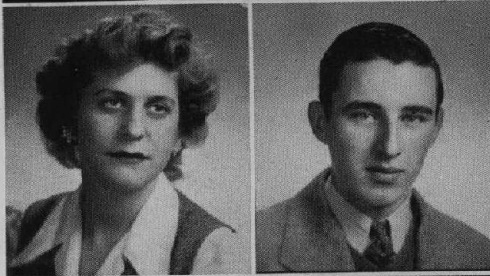


Jerry A. Heinz

Swimming 1, 2.

Bette Lou Henrici

Horseback Riding 1. Bowling 2. First Aid 2. See Chicago Club 3. Pep Club 2. Leaders 3. Glee Club 1, 2. Choir 3. Style Show 1. High School Studio Party 1, 2, 3. Citizens of Tomorrow 3.



John C. Hines, Jr.

Horseback Riding 3. Photography 2. See Chicago Club 3. Pep Club 3. Band 2, 3. Orchestra 2, 3.

Frank Hiratsuka

Transferred from Central Y.M.C.A. H. S. 4. Band 4. Orchestra 4. Foreign Language Club 4.

Transferred from Central Y.M.C.A. H. S. 4.



Joan Hoddinott

Transferred from Southwest H. S., Minneapolis, 3. Junior Prom Committee 3. Dance Committee 4. Junior Council 3. G.A.A. 4. Glee Club 3. Choir 4. Water Carnival Scenery 3, 4. High School Studio Party 3, 4. Student Activity Committee 4.

Margaret F. Hoffman

See Chicago Club 3. G.A.A. 1, 2. Style Show 2, 3.



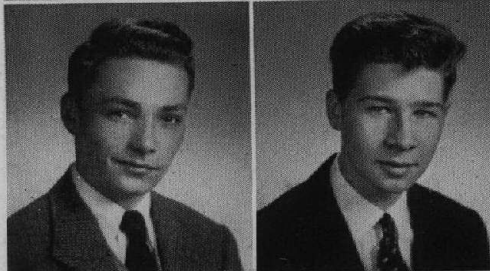
Marion C. Hoffman

Transferred from Mallinckrodt H. S. 2. See Chicago Club 3. Style Show 4.

Phillip Hoffman

Bowling 2. Homeroom Vice-President 1. Secretary 2. Foreign Language Club 2. Water Carnival 2.

John J. Jackson Staff
Phillip Hoffman



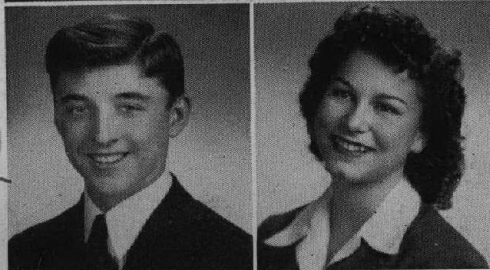
Bill Hogan

Transferred from Illiopolis H. S. 4.

Dick Hohs

Football 1. Baseball 2. Track 1. Forum 1. Band 1, 2, 3.

Do I call the Girl Killer Dick Hohs

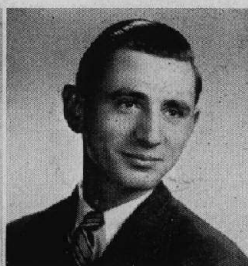
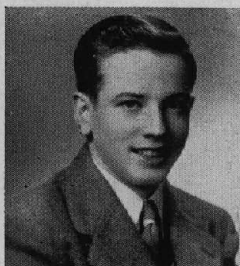


Nona Jayne Holappa

Silver Pin 3. Bronze Pin 2. Synchronized Swim 2. Lifesaving 3. Bowling 3. Tumbling 3. Homeroom Secretary 1. Forum 3. First Aid 3. Newspaper 4. Yearbook Staff 4. See Chicago Club 3. Foreign Language Club 2, 3. G.A.A. 1, 2, 3. Play Day 2. Camp 2. Pep Club 2. Cheerleader 1. Mixed Chorus 1. Band 1, 2, 3, 4. Orchestra 1, 2, 3, 4. Flute Quartette 4. Water Carnival 1, 2, 3.

James W. Holmes

Swimming 2, 3, 4. Track 1, 2. Forum 1, 2, 3, 4. Newspaper 3. Yearbook Staff 3. Cheerleader 1. Water Carnival 2. Plays "My Heart Beats for You," "A Soldier's Sweetheart," "Don't Take My Penny," "Footlight Fantasy," "And Came the Spring," "The Valley of the Ghosts," "Old Doc". High School Studio Party 1, 2, 3.



Paul P. Hoppe II

Baseball 2. Track 1. Homeroom President 1. Secretary 2. Vice-President 4. See Chicago Club 3. Pep Club 1, 2, 3. Radio Code 3. Glee Club 1, 2. Choir 2, 3, 4. High School Studio Party 2, 3, 4. Citizens of Tomorrow 3.

Helen Howard

Transferred from Carl Schurz H. S. 3.

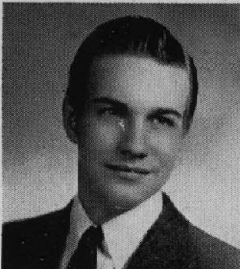


Shirley Ione Huber

Transferred from Minocqua H. S. 3. See Chicago Club 3. G.A.A. 4. Mixed Chorus 4. Choir 4. Citizens of Tomorrow 3.

Robert Humburg

Bronze Pin 4. Football 3, 4. Foreign Language Club 2, 3. Band 1, 2, 3, 4. Orchestra 1, 2.



Marilyn Hynes

Homeroom Secretary 2. Cheerleader 3. Foreign Language Club 1.

Peter N. Jaeger

Football 2, 3.



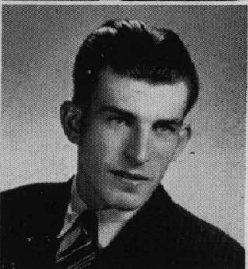
*Sets of books
Wilfred Johnson*

Wilfred W. Johnson

Forum 1, 2. Photography 3. Mixed Chorus 1, 2.

Howard L. Johnston

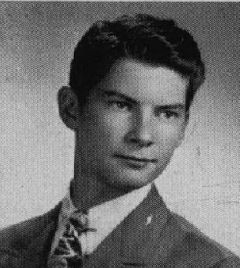
Transferred from Sullivan H. S. 2. Cross-country 2, 3, 4. Captain 3. Assistant Coach 4. Track 2, 3. Captain 3. Manager 4. See Chicago Club 3. P.A.P. Club 2. Pep Club 3.



Thomas Kadlec

Edward O. Keegan

Bowling 1, 2, 3. Ushers and Monitors Club 2.



Jean LaVerne Kelley

Transferred from Evanston H. S. 3. Bowling 3. First Aid 3. Newspaper 4. Yearbook Staff 4. See Chicago Club 3. Foreign Language Club 3, 4. Pep Club 3. Color Guard 3, 4.

Mae H. Kennedy

Synchronized Swim 2, 3, 4. Horseback Riding 2. Bowling 3. Dance Committee 4. Photography 4. G.A.A. 4. Pep Club 2, 3. Leaders 3, 4. Band 2. Water Carnival Scenery 3. Style Show 3. Student Activity Committee 4.

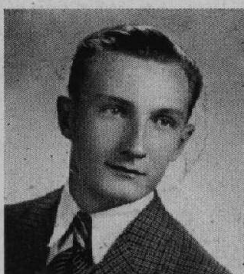


James C. King

Junior Council 3. Foreign Language Club 2, 3. Glee Club 1, 2. Mixed Chorus 1. Choir 2.

Robert Kirscht

Swimming 3, 4. Most Valuable Swimmer Award 4. Homeroom Secretary 1. Forum 4. See Chicago Club 3. Foreign Language Club 2.

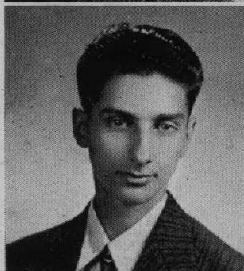


Eleanore Klinge

Bowling 3. Home Nursing 3. Forum 1. Homeroom President 2. See Chicago Club 2. Foreign Language Club 3. G.A.A. 2, 3, 4. Pep Club 2, 3. Leaders 4. Style Show 2.

Paul F. Koburi

Transferred from Carl Schurz H. S. 3. Track 3. Ushers and Monitors Club 4.



Beverly J. Kramer

Gold Pin 4. Silver Pin 3. Bronze Pin 2. Synchronized Swim 1, 2, 3. Horseback Riding 1, 2. Bowling 1, 2, 3. Captain and Manager 3. Forum 1, 3, 4. Vice-President 3. President 4. Homeroom President 2. G.A.C.S. Lieutenant 3. Home Nursing 2. Dance Committee 3. See Chicago Club 3. Foreign Language Club 2, 3. G.A.A. 1, 2, 3, 4. Play Day 2. Camp 2. Executive Board 2, 3, 4. Leaders 3, 4. Water Carnival 1, 2, 3.

Lorraine Krier

Home Nursing 2. Band 2, 3, 4. Orchestra 1, 2, 3, 4. Student Activity Committee 4. Style Show 2.



Elizabeth Anne Krysher

Synchronized Swim 4. Horseback Riding 1. Newspaper 3. Forum 1. See Chicago Club 3. Foreign Language Club 2, 3. High School Studio Party 3. Plays "Old Doc," "Don't Take My Penny," "Valley of the Ghosts".

Lois Lagershausen

Transferred from Lake View H. S. 3. Bowling 3. Junior Prom Committee 3. Dance Committee 3, 4. See Chicago Club 3. G.A.A. 3, 4. Water Carnival Scenery 3, 4.



Howard A. Langan

Cross-country 2, 3. Track 1, 2, 3, 4. P.A.P. Club 2. Play ("And Came the Spring").

Marjorie Lange

Foreign Language Club 4. Glee Club 1, 2. High School Studio Party 1. Citizens of Tomorrow 3.

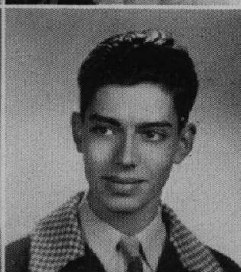


Jim Lannert

Silver Pin 3. Bronze Pin 2. Youth Conference Representative 4. Football 3, 4. Synchronized Swim 3, 4. Horseback Riding 2. Lifesaving 2. Bowling 2. Homeroom President 4. See Chicago Club 3. P.A.P. Club 2, 3, 4. Ushers and Monitors Club 2. Pep Club 3. Radio Code 3. Water Carnival 3, 4. Student Activity Committee Chairman 4.

Charles Leibrandt

Football 1, 2, 4. Basketball 1, 2, 4. Most Valuable Player Award 4. Golf 1. Track 2. Foreign Language Club 2. Pep Club 2.



George Lutz

Football 1. Homeroom Secretary 2. Newspaper 4. Foreign Language Club 1, 2. P.A.P. Club 1.

Daniel Mack

Forum 1. Dance Committee 4. Glee Club 1. Boys' Octette 3. Choir 2, 3. Student Activity Committee 4. High School Studio Party 2, 3. Citizens of Tomorrow 3.



Willard F. Maier

Forum 2. Photography 3, 4.

Olga Makarski

Style Show 2.

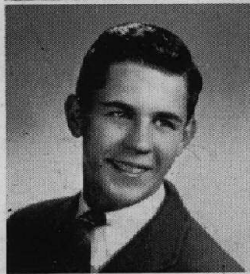


Barbara G. Mason

Gold Pin 4. Silver Pin 3. Bronze Pin 2. Senior Cabinet 4. Forum 2, 3. Homeroom President 1. G.A.C.S. 3. First Aid 3. Active Red Cross Member 3. Newspaper 3, 4. Yearbook Staff 3, 4. See Chicago Club 3. Foreign Language Club 2, 3. G.A.A. 2, 3, 4. Glee Club 4.

Alfred John Massmann, Jr.

Transferred from St. Anthony's College, San Antonio, Texas, 2. Swimming 4. Tumbling 4. Forum 2. Band 3. Water Carnival Scenery 3.

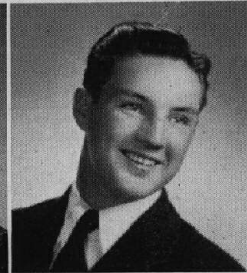
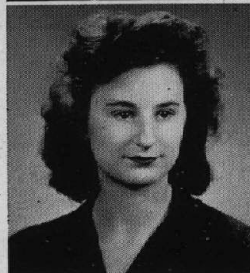


Margaret McNeill

Gold Pin 4. Silver Pin 3. Bronze Pin 2. Lifesaving 3. Homeroom Secretary 1. G.A.C.S. 3. Home Nursing 2. First Aid 3. Active Red Cross Member 3. Newspaper 3, 4. Yearbook Staff 3, 4. See Chicago Club 3. Foreign Language Club 2, 3, 4. G.A.A. 2, 3, 4. Ushers and Monitors Club 4. Pep Club 2, 3. Mixed Chorus 1. Girls' Sextette 3. Trio 4. Choir 3, 4. Mixed Octette 4. Water Carnival 3. Student Activity Committee 4. High School Studio Party 3, 4. Citizens of Tomorrow 3.

Rita Meyer

Active Red Cross Member 3, 4. See Chicago Club 3. Foreign Language Club 1, 2. Glee Club 1, 2.

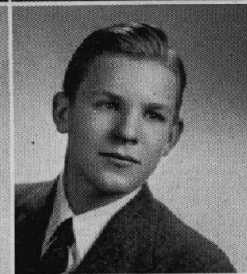


William Warren Meyer

Football 2, 3, 4. Basketball 1, 2, 3, 4. Track 1. Senior Cabinet 4. Forum 2. Homeroom Secretary 1. Foreign Language Club 2, 3. Band 1, 2, 3, 4. Orchestra 1, 2, 4.

Eileen Molitor

Bronze Pin 4. Bowling 3. Home Nursing 3. See Chicago Club 3. G.A.A. 1, 2. Water Carnival 1, 2. Style Show 2.



James K. Moore

Football 3, 4. Baseball 3. Basketball 3, 4. Swimming 1. Synchronized Swim 2, 3. Captain 3. Forum 3, 4. Vice-President 4. President 4. Junior Prom Committee 3. Foreign Language Club 3, 4. Pep Club 2, 3. Glee Club 2. Choir 3. Water Carnival 1, 2, 3. High School Studio Party 3. Citizens of Tomorrow 3.

Marilyn Mueller

Glee Club 2.



Shirley Mueller

Transferred from New Trier H. S. 4.

Virginia Mueller

Home Nursing 2. See Chicago Club 3. G.A.A. 1. Glee Club 3. High School Studio Party 3.

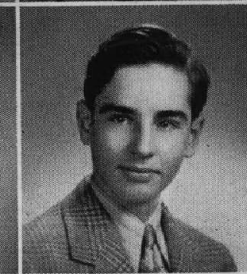


Norris O. Mullendore

Transferred from Evanston H. S. 3. Football 3, 4. Basketball 3, 4. Bowling 3. N.Y.A. Vocational Project 3. Dance Committee 3. Homeroom Officer 3.

Harriet A. Murray

Transferred from Evanston H. S. 2. Bowling 3. Homeroom Secretary 2. Junior Council 3. Senior Cabinet 4. Junior Prom Committee 3. See Chicago Club 2, 3. Foreign Language Club 3, 4. G.A.A. 3, 4. Choir 4. Student Activity Committee 4. High School Studio Party 4.



Richard J. Mussil

Band 2, 3. Photography 4. See Chicago Club 3. Foreign Language Club 2, 3. Play ("Old Doc").

Anna Nachbauer

Bowling 1. Foreign Language Club 2.



Anna Louise Nachbauer

Twirling 1, 2, 3, 4, Captain 3, 4. Homeroom President 1. Glee Club 1, 2. Choir 3. Style Show 2, 3. Student Activity Committee 4. Drum Major 3, 4.

Grace M. Nelson

Bronze Pin 4. Tumbling 2, 3. Forum 1. Homeroom President 3. Newspaper 3. Pep Club 2, 3. Leaders 3, 4. Cheerleader 2, 3, 4. Glee Club 1. Girls' Sextette 3. Choir 2, 3. High School Studio Party 1, 2, 3. Citizens of Tomorrow 3.

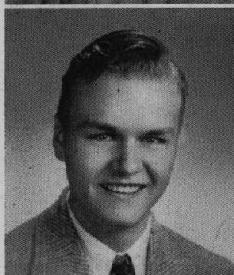


Dorothy Neumann

See Chicago Club 3. G.A.A. 1, 2. Glee Club 1, 2. Style Show 1. High School Studio Party 1.

William F. Nissen

Transferred from Sullivan H. S. 3. Citizens of Tomorrow 3.



Rose Marie Norum

Silver Pin 3. Bronze Pin 2. Bowling 3. Junior Council 3. G.A.C.S. 3. Home Nursing 3. Active Red Cross Member 3. Junior Prom Committee 3. Dance Committee 3. Foreign Language Club 2, 3. Pep Club 1. Glee Club 1, 2. Mixed Chorus 4. Girls' Sextette 4. Trio 4. Choir 4. High School Studio Party 4.

Betty Nosser

Transferred from Evanston H. S. 2. Bronze Pin 4. Homeroom Treasurer 3. Stamp Chairman 4. Foreign Language Club 2, 3, 4.

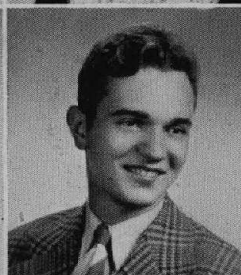


June Lois Ohlson

Bowling 1, 2. Tumbling 1, 2, 4. Homeroom Secretary-Treasurer 1, 2, 3, 4. Freshman Board of Advisers 1. See Chicago Club 3. Foreign Language Club 2, 3. G.A.A. 1, 2, 3, 4. Pep Club 1, 2, 3. Cheerleader 1, 2, 3, 4. Captain 3, 4. Junior Prom Committee 3. Color Guard 3, 4. Plays ("My Heart Beats for You," "Old Doc," "The Valley of the Ghosts"). Student Activity Committee 4. High School Studio Party 3. Citizens of Tomorrow 3.

June M. Olson

Horseback Riding 1. Bowling 1, 2, 3. Home Nursing 3. See Chicago Club 3. Foreign Language Club 2, 3. G.A.A. 1, 2, 3. Ushers and Monitors Club 2, 3. Student Activity Committee 4. Style Show 1.



Robert Pasek

Silver Pin 3. Bronze Pin 2. Synchronized Swim 3, 4. Swimming 1. Forum 3. Newspaper 3. See Chicago Club 3. Ushers and Monitors Club 2. Radio Code 3. Glee Club 1. Choir 2. Water Carnival 3, 4. Student Activity Committee 4. Citizens of Tomorrow 3.

Barbara Jean Pearson

Bowling 1, 2, 3. Tumbling 2, 3. Forum 1. Homeroom President 1, 3. Junior Prom Queen 3. Junior Prom Committee 3. See Chicago Club 3. Foreign Language Club 2, 3. G.A.A. 1, 2, 3, 4. Pep Club 3. Water Carnival 1, 2, 4.



Robert C. Pearson

Swimming 1. Homeroom Secretary 1. Pep Club 1.

Jane W. Permer

Lifesaving 3. First Aid 3. Newspaper 3. Yearbook Staff 4. See Chicago Club 3. Foreign Language Club 2, 3. G.A.A. 1, 4. Pep Club 1, 2, 3. Ushers and Monitors Club 4. Mixed Chorus 1. Choir 4. Mixed Double Quartette 4. Water Carnival 1, 3. Student Activity Committee 4. Style Show 4. High School Studio Party 4.

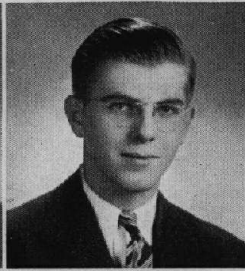


Gordon Peschke

Silver Pin 4. Bronze Pin 3. Bowling 3. Homeroom President 1, 2. Forum 1. Junior Council 3. Senior Cabinet 4. Junior Prom Committee 3. P.A.P. Club 2. Dance Committee 3.

Lenore Peters

Forum 2. Homeroom Secretary 3. Treasurer 4. Foreign Language Club 2, 3. Band 2, 3. Color Guard 3, 4. Water Carnival Scenery 2.

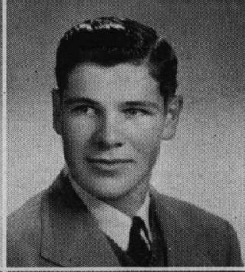
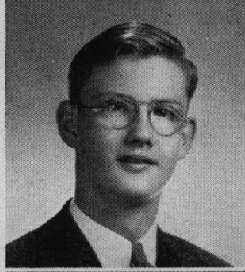


Gordon Eugene Peterson

Transferred from Lane Tech H. S. 2. See Chicago Club 3. Foreign Language Club 3, 4. Glee Club 2. Mixed Chorus 2. Choir 3, 4. Boys' Octette 3, 4. Band 2, 3. Orchestra 2. High School Studio Party 2, 3, 4. Citizens of Tomorrow 3.

Harry A. Peterson

Photography 4. Foreign Language Club 2, 3. Radio Code 4. Band 1, 2, 3.



Roland Piastrelli

Football 1, 2, 3, 4. Baseball 3, 4. Homeroom Treasurer 1. P.A.P. Club 1, 2, 3, 4. Water Carnival 2, 3, 4.

Quiet to go! See! Pollio

Margaret M. Plath

G.A.A. 1. See Chicago Club 3. Style Show 3.



LaVerne Platz

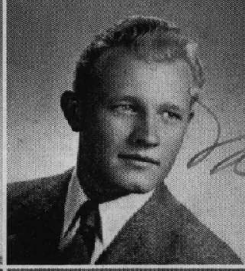
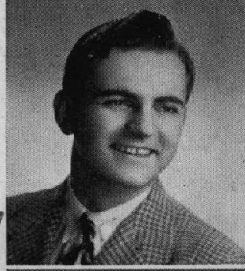
Home Nursing 3. See Chicago Club 3. Foreign Language Club 2. G.A.A. 1. Glee Club 2.

Edward D. Podolinsky

Transferred from Fenwick H. S. 3. Football 3, 4. Baseball 3, 4. Tumbling 4. Forum 4. Homeroom President 3. Junior Prom Committee 3. Newspaper 4. Yearbook Staff 4.

We should have won in basketball. To a good player. E.D. Podolinsky
Jack Griffith Price

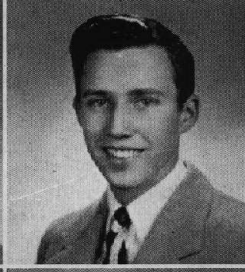
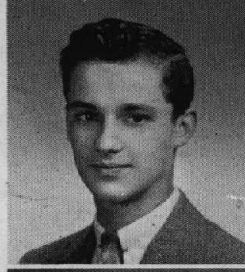
Gold Pin 4. Silver Pin 3. Bronze Pin 2. Football 3, 4. Basketball 3, 4. Tumbling 2, 3, 4. Homeroom President 2, 4. Foreign Language Club 2, 3. Newspaper 3, 4. Yearbook Staff 3, 4. Plays ("Don't Take My Penny," "My Heart Beats for You").



Roland M. Poehlman

Football 1, 2. Baseball 1, 2, 3, 4. Basketball 1, 2, 3, 4. Tumbling 4. Homeroom President 1, 2, 3. Senior Cabinet 4. Freshman Board of Advisers 1. Foreign Language Club Vice-President 3. Pep Club 1, 2, 3. Newspaper 3.

Roll M. Poehlman



Eugene Putnam

Football 1, 2, 3, 4. Manager 4. Basketball 2, 3, 4. Tumbling 1, 2, 3. Forum 3. Senior Cabinet 4.

Charlotte Quincy

Synchronized Swim 1, 2, 3, 4. Bowling 1, 2, 3. Homeroom Officer 1. Foreign Language Club 2. Dance Committee 3. Pep Club 1, 2, 3. Leaders 4. Water Carnival 1, 2, 3. Student Activity Committee 4.



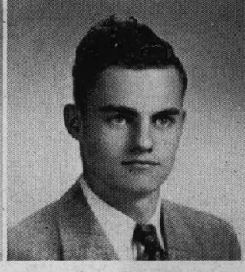
Rosemary Racine

Synchronized Swim 1, 2, 3, 4. Horseback Riding 2. Twirling 1. Lifesaving 3, 4. Bowling 1, 2, 3. Forum 4. Homeroom President 3. See Chicago Club 3. Foreign Language Club 2, 3. G.A.A. 1, 2, 3, 4. Play Day 3. Leaders 3, 4. Band 1, 2, 3. Orchestra 2, 3. Water Carnival 1, 2, 3, 4. Scenery 2, 3, 4.

Take it easy while you can

James N. Ransdell

Transferred from New Trier H. S. 2. Football 2.



James Rasmussen

Football 1, 2, 3, 4. Bowling 1, 2, 3, 4. Homeroom Treasurer 1. President 2. Secretary 3. Stamp Chairman 4. Newspaper 4. Yearbook Staff 4. Foreign Language Club 2.

Jim

Jack Ritter

Football 1, 2, 3, 4. Swimming 1. Synchronized Swim 1, 2. Tumbling 1, 2, 3, 4. Homeroom President 1, 2, 3. Water Carnival 1.



Helen Roberts

Tumbling 1. G.A.C.S. 3. Homeroom Secretary 3. Yearbook Staff 4. See Chicago Club 3. Foreign Language Club 3. G.A.A. 1. Pep Club 2.

Marion Robertson

Tennis 1. Junior Council 3. Forum 4. Foreign Language Club 2, 3. G.A.A. 1, 2, 3, 4. Junior Prom Committee 3. Dance Committee 3. Student Activity Committee 4. High School Studio Party 3.



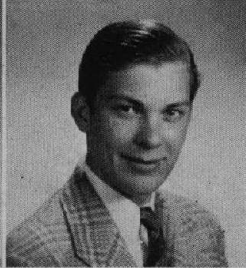
Ted L. Roess

Gold Pin 4. Silver Pin 3. Bronze Pin 2. Newspaper 3. Foreign Language Club 2, 3. Band 2, 3, 4. Orchestra 2, 3, 4.

*To a great basketball player
Ted Roess*

Laurie Rogers

Transferred from Wauwatosa H. S. 3. G.A.A. 4. Student Activity Committee 4.



Eugene Roman

Transferred from Senn H. S. 3. Forum 4.

Eugene Roman

Arthur Ross

Glee Club 1, 2. Mixed Chorus 1, 2.



Leora Ross

Transferred from Lakewood H. S., Lakewood, Ohio, 3.

Gladys Rossmann

Bronze Pin 4. Twirling 3, 4. Homeroom Secretary 2. Foreign Language Club 2. Newspaper 3.



Helen Louise Ruesch

Newspaper 3. Foreign Language Club 2. G.A.A. 1.

Richard E. Ruesch

Football 1, 2. Baseball 1, 3. Basketball 2, 3, 4. Tumbling 4. Photography 3, 4. Glee Club 2. Mixed Chorus 1, 2.



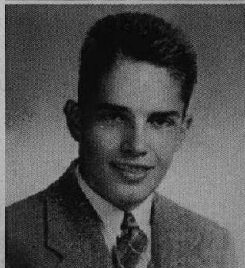
Evelyn Rugen

Transferred from New Trier H. S. 4. Dance Committee 4. Leaders 4. Style Show 4.

*Remember 10:00's
every Saturday.
but not any more
"CW"*

Robert Sandin

Transferred from Evanston H. S. 3. Bronze Pin 4. Football 4. Baseball 3, 4. Basketball 4.



Margaret Schmidt

G.A.A. 1.

Mildred Schmidt

Tumbling 1. Forum 1. Homeroom President 4. See Chicago Club 3. G.A.A. 1, 2, 3. Leaders 3. Style Show 2. Student Activity Committee 4.



Roegene M. Scholow

Horseback Riding 2. Bowling 2, 3. Home Nursing 3. Homeroom President 2. See Chicago Club 3. Ushers and Monitors Club 4. G.A.A. 1, 2, 3. Pep Club 2. Junior Prom Committee 3. Newspaper 3.

Hildegard Schottleitner

Homeroom Vice-President 1, 2. Forum 3. Senior Cabinet 4. Dance Committee 2, 3. Mixed Chorus Accompanist 1. Student Activity Committee 4. Plays ("Old Doc." "And Came the Spring"). Water Carnival 2, 3, 4. High School Studio Party 3.

Hildegard Schottleitner

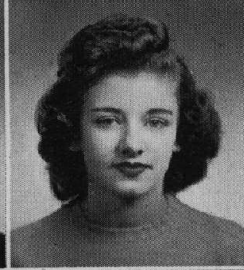


William Shay

Transferred from St. George's H. S. 3. Football 4. Baseball 3. Basketball 3, 4. Tumbling 4. Homeroom President 4.

Frances Smith

Twirling 2, 3. G.A.C.S. 3. G.A.A. 1, 2, 3, 4.

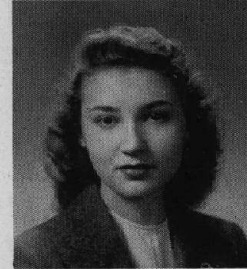


Kathleen Smith

Twirling 2. Bowling 1, 2, 3. Captain 2. Junior Prom Committee Chairman 3. See Chicago Club 3. Foreign Language Club 2, 3, 4. G.A.A. 1.

Lorraine Splett

Bronze Pin 2. Horseback Riding 2. Bowling 3. Forum 4. See Chicago Club 3. Foreign Language Club 3, 4. G.A.A. 1, 2, 3, 4. Home Nursing 3. Glee Club 1, 2.



Lois G. Steek

Horseback Riding 2. Bowling 3. Home Nursing 3. See Chicago Club 3. Foreign Language Club 2, 3. Pep Club 2. G.A.A. 1, 2, 3, 4.

James Stefek

Transferred from Lane Tech H. S. 1. Football 1, 2, 3. N.Y.A. Vocational Project 3.

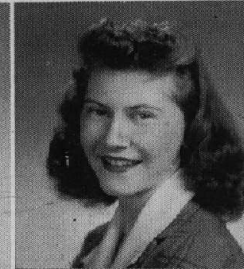


Dorothy M. Steward

Newspaper 3.

Ned Stowe

Foreign Language Club 2, 3. Ushers and Monitors Club 1, 2. Glee Club 1. Choir 2.

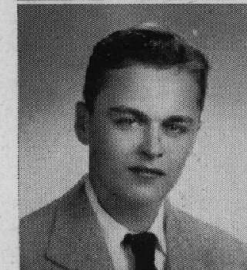


Betty E. Strum

Transferred from Carl Schurz H. S. 2. Home Nursing 2.

Don F. Stuehler

Transferred from Lake View H. S. 2. Swimming 3. Track 3. P.A.P. Club 3.



Marilyn Alice Tilton

Transferred from St. Gregory H. S. 2. Horseback Riding 3. Twirling 2. Bowling 3. Junior Prom Committee 3. Dance Committee 3, 4. See Chicago Club 3. Foreign Language Club 2. G.A.A. 2, 3, 4. Play Day 3. Pep Club 2, 3. Student Activity Committee 4. High School Studio Party 4. Play ("And Came the Spring").

Bernice Tolzien

Horseback Riding 2. Bowling 3. Home Nursing 3. See Chicago Club 3. G.A.A. 1, 2, 3, 4. Play Day 3. Leaders 3, 4. Glee Club 2. Mixed Chorus 2. High School Studio Party 2.

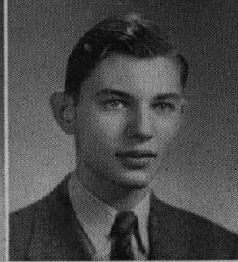


Fred Tolzien

Football 2, 3, 4. Captain 4. Basketball 2, 3, 4. Tumbling 1, 2, 3, 4.

Charles E. Valkenaar

Football 4. Baseball 1, 2, 3, 4. Basketball 3. Horseback Riding 2. Bowling 1. Tumbling 4. Freshman Board of Advisers 1. Dance Committee 3, 4. Foreign Language Club 3. P.A.P. Club 1, 2, 3, 4. Captain 3, 4. Pep Club 1, 2. Water Carnival Scenery 1, 2, 3, 4.

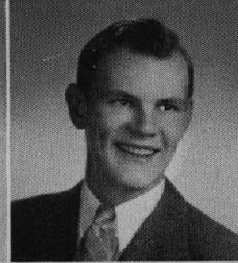
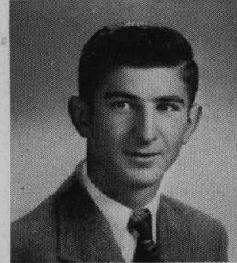


Milan A. Voyvodich

Football Manager 2, 3, 4. Track 1, 2. Manager 2. Foreign Language Club 2, 3. Radio Code 3. Glee Club 2. Band 2, 3, 4. Choir 3. Citizens of Tomorrow 3. High School Studio Party 3.

Gus Wagner

Transferred from Steinmetz H. S. 1. Baseball 2, 3, 4. Basketball 3, 4. Track 1. Tumbling 2, 4. Homeroom Vice-President 3. President 4. Ushers and Monitors Club 1, 2.



Robert R. Warehan

Football 3, 4. Track 1, 2, 3. Tumbling 2, 4.

Robert M. Weidenmiller

Transferred from Von Steuben H. S. 2. Football 2, 3, 4. Horseback Riding 2. Tumbling 4. Forum 3. Homeroom President 2. Photography 3. Foreign Language Club 2. P.A.P. Club 2. Pep Club 3, 4.

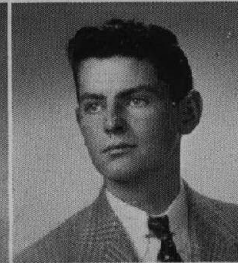


Mary Ann Wenzel

Bowling Captain 2, 3. Tumbling 1. Junior Council 3. Homeroom President 1. Secretary 2. G.A.C.S. 3. Home Nursing 1. See Chicago Club 3. Foreign Language Club 2. G.A.A. 1, 2, 3, 4. Play Day 1. Camp 3. Pep Club 1, 2, 3. Ushers and Monitors Club 3. Glee Club 1. Mixed Chorus 2. Student Activity Committee 4. Water Carnival 2, 3, 4. Junior Prom Committee 3. Dance Committee 3. High School Studio Party 1.

Gloria Westerberg

Bronze Pin 4. Horseback Riding 1, 2. Bowling 1, 3. Homeroom Secretary 2, 4. Treasurer 1. Vice-President 3. Junior Prom Committee 3. Dance Committee 2, 3. See Chicago Club 3. Foreign Language Club 2, 3. G.A.A. 1, 2, 3, 4. Camp 3. Pep Club 2, 3. Band 1, 2, 3. Student Activity Committee 4. Style Show 3. Plays ("Old Doc," "Don't Bring the Band," "The Valley of the Ghosts").



James Whalen

Transferred from St. George's H. S. 3. Baseball 3, 4. Senior Cabinet 4. Foreign Language Club 3.

Jack Wise

Basketball 1, 2. Bowling 1. Tumbling 2.



June Witte

Forum 2. G.A.A. 1.

NO PICTURE

Leslie Ahrens

Jack Bylsma

Edna Southworth

Transferred from Lakeview H. S. 2. Silver Pin 3. Bronze Pin 2. See Chicago Club 3. Foreign Language Club 2, 3.

Mary Alyce Thiel

Transferred from Senn H. S. 4.

Doris Willney

Transferred from Senn H. S. 2. Bowling 3. Water Carnival 3.





Left to right:
 Shirley Ahrens
 John Aliprandi
 Arthur Anderson
 Eugene Anderson
 Charles Bailey
 Eugene Bailey
 Norman Bailey
 Edward Ballantine

Clark Battle
 Rosemary Biederer
 Tom Birong
 Mars Bishop
 Nick Bogner
 Bob Bollow
 Laura Breckenridge
 Delores Brooks

Corinne Brunger
 Lois Buhrke
 Betty Burns
 Pat Canty
 Gil Cantanzaro
 Nancy Cates
 Pauline Cebery
 Marilyn Clark

Katie Clark
 Bill Cole
 Leonard Conrad
 Paul Corso
 Helen Dahm
 Fritz Daiberl
 Elaine Dall
 Bob Dammann

Marilyn Davis
 Ed Dean
 Virginia Didier
 Frances Dietsch
 Frank Dukes
 Phillips Egebrecht
 Joann Ehn
 Harold Engebretson

Ann Erickson
 Bob Erickson
 Betty Esslinger
 Jean Faulmann
 Sally Fjellman
 Frances Franson
 June Fredrichs
 Jay Gallas



Junior Council
 Pat Canty
 Don Lyon
 Ada Fredericks
 Al Huber
 Ann-Marie Schirra
 Mary Lou Kendall
 Miss de Booy

Juniors

Left to right:

Charles Gille
Shirley Gregor
Irene Gross
Shirley Grosse
Dorothy Gustafson
Betty Hall
Norman Hall
Lorraine Hannemann



Wayne Hansen
Dave Hawkinson
Richard Hedstrom
Geraldine Henberger
Pat Henrici
Marilyn Horndasch
Barbara Horton
Paul Jacobs



Marion Jennetten
Dolores Johnson
Ruth Jones
Therese Keegan
Mary Lou Kendall
Virginia Kish
John Kircher
Eleanor Koch



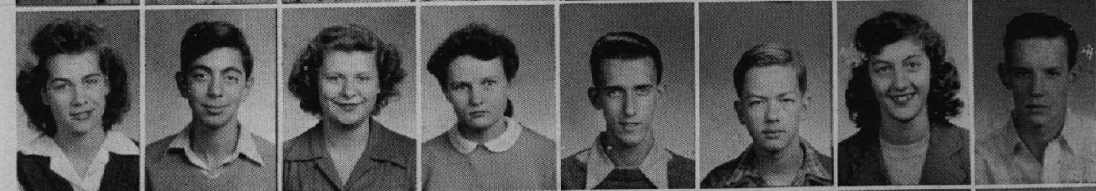
Donald Kreger
Irwin Krmicek
Ed Kretsch
Helen Kuehne
Grant Kuhn
Bill Kunkel
Evelyn Lange
Pat Lannert



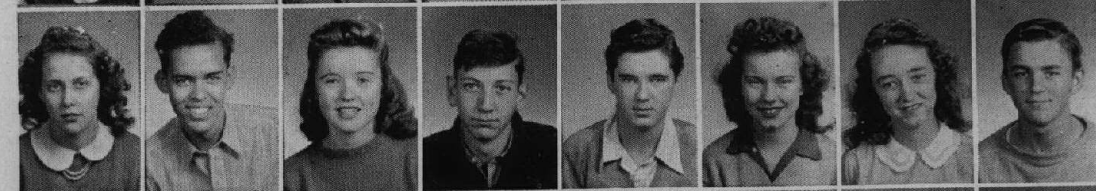
Shirley Lawrence
Horace Lindecker
Donald Lundberg
Patricia Mayer
John McCreery
Henry Meinke
Evelyn Miethke
Lee Morse



Caroline Mueller
Harold Muto
Shirley Nellessen
Mary Jane Nelson
Ray Nelson
Ralph Nettland
Helen Newman
Victor Nix



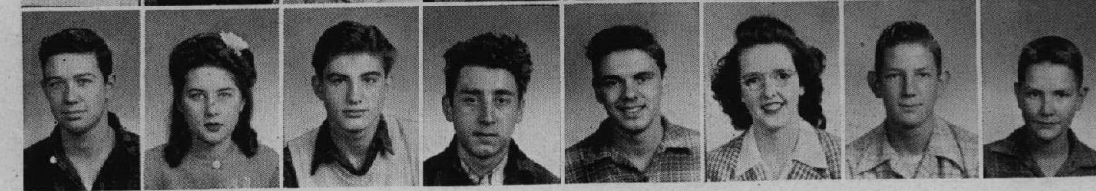
Katherine Naslund
Charles Olsen
Beverly Ann Pearson
Ed Peter
Walter Piehler
Lois Piske
Margery Plummer
Thomas Podraza



Mary Ellen Racine
Trudy Ray
Ernest Reimann
Hunter Reynolds
Ernest Risinger
Rupert Roegner
Shirley Rohrer
Richard Ruesch



Lien Sarles
Anna May Schmitt
Art Schmidt
Dan Silicani
Russell Skallerup
Betty Sparkman
Harold Springer
William Stielow





Left to right:
 Bernice Stoll
 Daniel Sullivan
 Dorothy Swanson
 James Tagney
 June Tetjman
 Lois Toerber
 Mary Ann Trausch
 Joan Trietsch

Jack Verlenden
 Virginia Waldin
 Bob Wedel
 Marjorie Wedel
 Tommy Wetmore
 Dick Wilton
 Paul Winger
 Dorothea Wolcott

Kenneth Hoffman
 Rosemary Lutz
 Sherrill MacDonald
 Bill Marquette
 Alvina Hachmeister
 Walter Zust

The following juniors did not have their pictures taken:

- Fred Bernard
- William Bonney
- Rosemary Breden
- Robert Brod
- Donald Christensen
- William Comer
- Bernadette Creany
- Joanne Detweiler
- Ada Fredericks
- Jack Fredericks
- Donald Frederickson
- LaVern Grover
- Lorrayne Hansen
- Edmund Heartstedt
- Willard Hertzberg
- Chloe Hoffman
- Hildegard Jarosch
- Esther Kraus
- Lorraine Krzeneski
- Roy Lumpp
- Donald Lyon
- Beverly Ann Markus
- Catherine Matheson
- Warren Mueller
- Rae Rita Olson
- Nancy Perrin
- Marilyn Proesel
- Dorothea Sandberg
- Ann Marie Schirra
- Lillian Sprud
- Thomas Stockenberg
- Harry Thill
- Clarence Wemple



Left to right:
 Jean Ahrens
 Vernon Ahrens
 Carol Anderson
 Ellen Anderson
 Margy Anderson
 Margaret Andreassen
 Alison Ash
 Frank Backes
 William Barbour

•
 John Barker
 Roy Baumann
 Ray Baumgartner
 Richard Baumhart
 Mary Becker
 Ruth Becker
 Herbert Behrens
 Violet Berens
 Mathew Boemmel

•
 Dennis Bornarth
 Fred Borneman
 Nick Boznos
 Victor Breckler
 Jerry Burke
 Marilyn Burns
 Pat Byron
 Walter Campany
 Robert Carlson

•
 James Casson
 Robert Cleary
 Milan Cobb
 Forrest Cole
 Pat Conard
 Bruce Cook
 Jane Coursey
 Dorothy Dahm
 Gertrude Dettmer

•
 Ray Didier
 Lucien Di Salvo
 Richard Dobroth
 Robert Doetsch
 Irene Donaldson
 Betty Du Mont
 Donald Dye
 Jean Ebenroth
 Ted Ebert

•
 Jean Eichelberg
 Jim Ehmer
 Paul Even
 Donald Falknor
 Paul Fancher
 Muriel Farrell
 Margaret Felker
 Ed Fisher
 Roy Fisher

•
 Joan Flavin
 George Flugler

•
 Donna Flynn
 Robert Force

•
 Joe Freimuth
 Frances Fuhr

•
SOPHOMORE SENATE

Top row, left to right:
 Jerry Burke, Jay Fuller,
 Don Ransdell, Marvin
 Struck
 Seated, left to right:
 Mr. Larson, Betty Smith,
 Audrey Ruthenbeck



Sophomores



Left to right:

Jay Fuller
 Walter Gatzke
 Laverne Gerkin
 Etheldred Girten
 Norman Glauner
 Bill Guenther
 Barbara Hall
 De Forest Hamilton
 Bill Hardenbergh

•
 Jim Harrer
 La Verne Hartung
 Dolores Hawkinson
 Howard Haynie
 Betty Hays
 Lois Heiniger
 Daniel Heinz
 Nick Henrici
 Muriel Hendrickson

•
 Edward Herkert
 Marilyn Hertzberg
 Shirley Hoddinott
 Helen Hoffman
 Jim Hohns
 Elaine Hoppe
 Dorothy Horitz
 Joan Horndasch
 Dorothy Howe

•
 William Hughes
 Herbert Jaehnke
 Charles Jaap
 Herbert Jarosch
 Harry Jensen
 Mildred Jettman
 Alf Johnson
 Allan Karlove
 Loretta Karnatz

•
 Leonard Kawell
 La Verne Kellen
 John Kent
 Lois Kerley
 Jean Kirscht
 Ruth Kluge
 Bob Klump
 John Kokum
 Shirley Koseck

•
 Fritz Kreiss
 Jean Krisor
 Earl Krmicek
 Geraldine Krysiak
 Beverly Kuhn
 Carol Kutz
 Shirley Kutz
 Dolores Kwarnstrom
 Dorothy Lacy

•
 John Lane
 Norma Lange
 Leroy Lehman
 Elaine Linstead
 Roger Loeffgren
 Albert Lukas
 Lois Lumpp
 Marion Nachbauer
 Janet MacCleary

•
 Ruth Madsen
 Lorraine Mandeville
 Robert Marquette
 Stanley Martin
 Charles Massman
 Eleanor May
 Sidney Mayer
 Marion McClain
 Herbert Meikle

•
 Lorelei Meilicke
 Margaret Meindl
 Henry Miller
 Dolores Mohrbacher
 Kathryn Monahan
 Harry Mueller
 Stewart Munroe
 Louis Nachbauer
 Barbara Nelson

Left to right:

Eleanor Nelson
Lorraine Nelson
Charmaine Neutz
Loran Nordgren
Ronald Nordlund
Donna Norum
Gary Oakley
Nancy Ohlson
Dorothy Olson

•
Vivian Oslund
Bill Ottens
Joe Paolell
Jackie Perrin
George Peschke
Evelyn Plath
Pat Price
Shirley Radtke
Don Ransdell

•
Warren Redick
John Reifenberg
Leland Robar
Louis Robinson
May Robinson
Jerry Rochow
William Roden
Robert Roman
Maurice Ross

•
Don Rossman
Arlene Ruesch
Jean Ruesch
Robert Ruesch
Carol Rugen
Audrey Ruthenbeck
Thayne Sando
Marion Schaefer
Albert Scheuer

•
Al Schroeder
Marion Schubert
Myra Schuett
Jean Schuitz
Beryle Schwabe
Ed Sell
Gloria Seltzer
Pat Sheehan
Rose Sliwa

•
Stanley Sliwa
Corinne Sloncen
Kathryn Sloncen
Betty Smith
Arnold Steif
Ken Stezskal
Fred Stowe
Floyd Straub
Jeanne Streeter

•
Jack Suydam
Richard Swanson
Robert Swanson
Richard Tait
Jane Taylor
Gwendolyn Tiseth
William Todd
Charmaine Valkenaar
William Walmsley

•
Lola Werhane
Betty Weldon
David Wilkinson
Dolores Wilson
Frank Zallar
Mary Anne Ziegele
William Anderson
Willard Berkow
Roland Hacker





Left to right:
 Henry Ahrens
 Raymond Ahrens
 Dorothy Anderson
 Dyer Bailey
 Merrill Bailey
 Diane Baker
 Robert Baker
 Gertrude Barggren
 Shirley Bartleson

Lois Barton
 Pat Baumhardt
 Barbara Bengston
 Oliver Berens
 Ruth Berkow
 Frank Biederer
 Dona Bishop
 Robert Blessing
 Henry Bobowski

Bob Boehning
 Joan Boemmel
 Lorraine Bogner
 Ray Boldt
 Phillip Bornarth
 Lois Bornemeier
 Mary Jean Brandt
 Joan Bruck
 Nancy Burge

Harold Bylsma
 Don Byron
 Earle Carlson
 Marion Carlson
 Raymond Carlson
 Velia Christofano
 Betty Clarkens
 Shirley Clarkens
 Helen Conrad

Bob Conway
 John Crawford
 Don Da Digian
 Jerry Dahm
 Dorothy Davis
 Beatrice Delles
 Vera Doan
 Lois Deutsch
 Robert Dombrowski

Margaret Donovan
 Pat Donovan
 Nancy DuMont
 Judy Duncan
 George Dyrssen
 Noelle Elkins
 Bob Farr
 Dick Fisher
 Fred Flugler

Betty Fortman
 Delores Franson
 Dick Fuhr
 Louise Funke
 Roy Gallipo
 Lloyd Gaston
 Joyce Gawrysh
 Dorothy Goers
 Joanne Gubbins

Francis Guirsch
 Marilyn Gustafson
 Walter Gutman
 Reinhold Hacker
 Maxine Haggie
 Joseph Hanegan
 Pat Hanegan
 Jim Hardenbergh
 Carolyn Harnden

Paul Hattendorf
 Janet Hayes
 Eugene Hegarty
 Allen Heim
 Bob Heinz
 Robert Henrici
 Jim Hill
 Howard Hoffman
 John Hoffman

Freshmen

Left to right:
 Virginia Hogan
 Carol Holmberg
 Philip Horton
 Ruth Howard
 Eugene Huber
 Josephine Huber
 Phyllis Humphrey
 Margaret Hunt
 Rae Ihrcke

•
 Fred Jaehnke
 Joe Jaski
 Viola Karsten
 James Katzel
 Harry Kaufman
 Betty Kellen
 Robert Kepen
 Louis Kettel
 Grace Klehm

•
 Marion Kohl
 Mary Kopp
 Bernice Kozak
 Carol Krause
 Clyde Kreutter
 Mary Ann Krier
 Ronald Krueger
 Dorothy Kruschka
 Don Kunkel

•
 Harold Larson
 Mary Louise Larson
 Uno Larson
 Dolores Lauth
 Jean Leach
 Howard Lindstrom
 Marilyn Lumpp
 Bill MacArthur
 Sylvia Maheras

•
 June Maier
 Stella Makarski
 Gloria Malnick
 Marie Marken
 Jack McNeely
 Jim McNeely
 Bill McNeill
 Edward Meyer
 Virginia Mikulic

•
 Albert Miller
 Frances Monahan
 Robert Mueller
 John Noffz
 Joyce Nordlund
 Pat Norum
 Ronald Oates
 George Pasek
 Alma Patzke

•
 Vivian Pawlowski
 Robert Pearson
 June Pence

•
 Shirley Peters
 Betty Plath

•
 Roger Racine
 Marilyn Reiss

•
 Freshmen Board:

Harold Renis
 Miss M. Ronalds
 Cathy Thompson
 Pat Schirra
 Donald Kunkel
 Paul Reiland
 Uno Larson





Left to right:
 Harold Renis
 Donald Rentzsch
 Henry Rings
 Betty Risinger
 Joan Rouse
 Dorothy Ruesch
 Marianne Ruesch
 Charles Russell
 Don Sandin

•
 Bill Sarles
 Mary Sherer
 Pat Schirra
 Chris Schlueter
 Anita Schmid
 Elaine Schroeder
 Eugene Schultz
 Peter Schuster
 Shirley Seeley

•
 Lloyd Seltzer
 Pat Sheehan
 Dorothy Sherman
 Lorraine Sorensen
 Howard Speer
 Betty Steek
 Joan Stelzer
 Ted Stockfisch
 Dave Straw

•
 Edward Such
 Dave Taylor
 Catherine Thompson
 James Todd
 Joyce Tompkins
 Joe Toth
 Robert Train
 Dorothy Trausch
 Elmer Valkenaar

•
 Bob Wahrer
 Joseph Waldin
 Dolores Wells
 Charlene Werner
 Joan Westerberg
 Joe Wettengel
 Margaret Wetmore
 Jerry Whalen
 Frank Williams

•
 Evert Willney
 Evelyn Windmeier
 Bill Witte
 Margaret Wood
 Betty Youngberg
 Mildred Zavrel
 Mike Zenner
 August Ziehlke
 Jeanette Ziehlke

Sophomores Without Pictures

Martin Alterini
 Shirley Beuder
 Dorothy Breden
 Paul Brice
 Dick Buchen
 Arlene Chastain
 Jack Cogdell
 Vito Colano
 Don Comstock
 Mary Jane Fitzgerald
 Robert Grotz
 Renee Hain
 Evelyn Kante
 Norma Jean Keerns
 Walter Kelting
 Bill Kenny
 Margaret Leclercq
 Ann McKeever
 Herbert Meikle
 Don Nepstad
 Stanley Noesen
 Harry Oates
 Lois Ostrom
 Ella Phillips
 Sally Porter
 George Riha
 Lorraine Shade
 Eleanore Simone
 Marvin Struck
 Howard Suckow
 Pat Tirrell
 Jack Zimmerman
 Martin Zobus

Freshmen Without Pictures

Richard Allen
 Mary Ann Baumez
 Shirley Baumhardt
 Bob Bierbaum
 Naena Dunlap
 Richard Graf
 Marjorie Harrer
 Marilyn Herkert
 George Hoffman
 Audrey Jestic
 Joan Kregier
 Janet Larson
 Richard Lebbin
 Robert Leuth
 Richard Mack
 Violet Martinson
 George McCormack
 Carol Murray
 Don Olson
 Marjorie Peterson
 Betty Rae
 Eleanor Rollick
 Gertrude Schiedecker
 Jane Sparkman
 Merrill Taylor
 Mark Weis
 LaVerne Wenzel
 Pearl Wynnacht
 Gerry Zeller



Student-Faculty Forum



In a world where freedom is constantly in danger of being suppressed, the ideals of a liberty-loving people must be ever preserved through the medium of education. To train its students in clear and democratic thinking is one of the first aims of every school in this country, where independence is cherished above life itself.

At Nilehi the Student-Faculty Forum has come to the front as a living symbol of democracy at work. In this body is vested the power of the students to have a voice in their government; and it is through this organization that a clearer understanding between teachers and pupils is attained.

The combined leadership and ability of its members and officers has enabled the Forum to secure some outstanding achievements throughout the year; and by so doing, the citizens of tomorrow learn by being the citizens of today.

Back row left to right: Mr. Benette, Eugene Schultz, Dick Graf, Oliver Berens, Bill Hardenbergh, Frank Backes, Pat Sheehan, Evelyn Windmeier.

2nd row: Ed Peter, Marilyn Hertzberg, Ernest Reimann, Paul Jacobs, Walter Zust, Don Ransdall, Stanley Martin, Ted Carlyle.

Front row: Dorothy Sherman, Bob Arnold, vice-president second semester; Jim Moore, Jim Holmes, Betty Bray, Eugene Roman, Tom Wetmore, Beverly Kramer.

Insert left: Tom Wetmore, secretary. Center top: Beverly Kramer, president first semester. Bottom right: Jim Moore, vice-president first semester, president second semester.



Student Activities Committee

We can't help but burst a few buttons telling you about this level-eyed group of Trojans who compose the Student Activities Committee. With Miss Harbert as their capable and hard-working sponsor, they planned, advertised, and carried out many activities with huge success. The whole school has benefited from their efforts and we hope that this organization will continue next year.

Top row, left to right: Annaliese Nachbauer, Barbara Abbott. Second row: Peggy McNeill, Mary Lou Coulter, Charlotte Quincy, Eleanor Klinge, Mickey Callmer, Hildegard Schoitleutner, Gertrude Dettmer, Muriel Fullhard. Third row: Jane Permer, Betty Heimiger, Mary Jane Nelson, Joan Hoddinott, Marilyn Tilton, Mary Ann Wenzel. Fourth row: Mae Kennedy, June Ohlson, Miss Harbert, Lenore Peters, Lois Logershausen, Laura Copeland, Donna Jean Norum, Harriet Murray, Marion Robertson, Hortense Harles. Fifth row: Tom Davidson, Ted Carlyle, Richard Dobroth, Fred Borneman. Bottom row: Rupert Roegner, Ralph Nettland, Robert Pasch, Jack Ritter, Jim Lannert.



Jeep Campaign

To start off the year with a bang, we Trojans accomplished the amazing feat of selling enough bonds and stamps for three jeeps in two days. A jeep rally was in order, with one of Niles's jeeps being presented by the students to Private Lees of Camp Skokie.



Stamp Booth

Niles Township can well be proud of its stamp and bond record for the past year, and also of those who pushed the sales so effectively. Through colorful posters, announcements, and personal contact, these people helped to make this year one of the most generous and patriotic in Trojan history.

Left to right: Laurie Rogers, Joan Hoddinott, Eleanor Klinge, Mary Lou Coulter, Tom Davidson, Betty Heimiger, Marion Robertson, Lois Corrin, Harriet Murray, Hortense Harles, Mildred Schmidt, Joyce Graefen, Jim Lannert, Charlotte Quincy, Ted Carlyle, Bob Pasch.



Bond and Stamp Chairmen

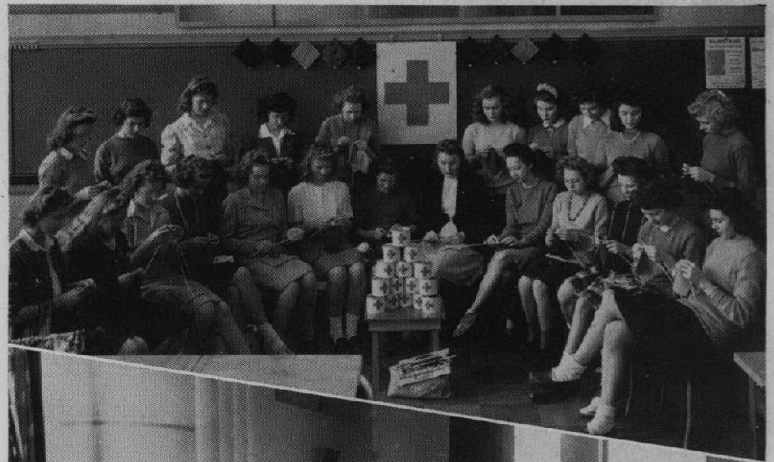
Niles has certainly come to the front in the purchase of war bonds and stamps during this year. A great deal of credit should go to the home room chairmen for this splendid showing. They are to be congratulated upon the efficiency and spirit shown in the undertaking of this job.

First row, left to right: Jerry Rochow, Joan Stelzer, Muriel Fullhard, Vivian Pawlowski, Herbert Jarosch. Second row: Bill Hughes, Roy Gallipo, Elaine Dall, Jim Rasmussen, Louis Robinson, Robert Roman. Third row: Nancy DuMont, Betty Nossier, Rosemary Lutz, Pat Lannert, June Maier, Dorothy Davis. Top row: Dorothy, Gustafson, Lenore Peters, Betty Weldon, Dolores Chapman, Laura Breckenridge, Virginia Waldin.

Home Ec. Class Knitting

You might say that this is a group of very conscientious knit-wits. However, for their serious work in behalf of the Red Cross, the freshmen girls pictured here have earned a more appropriate title. The industrious lasses are members of Miss Line's home economics classes and the little squares they are so diligently knitting were converted into afghans.

Top row: Betty Plath, Rae Ihvcke, Margaret Hunt, Betty Rae, Charlene Werner, Mary Kopp, Pat Donovan, Mary Larson, Diane Baker, Joyce Gawrysh. 1st-row, left to right: Ruth Berkow, Marianne Ruesch, Joan Bruck, Dorothy Goers, Janet Larson, Shirley Bartleson, Margaret Wetmore, Lois Bornemeier, Gertrude Barggren, Betty Clarkens, Judy Duncan, Mildred Zuvrel, Carolyn Harnden.



Scouts Participate in War Effort

Two of the most important service organizations in the school today are the Boy Scouts and the Senior Service Scouts. These two groups have done a great job in helping the war effort and participating in all of the school's activities.

Top row, left to right: Dorothy Anderson, Margaret Donovan, Grace Klehm, Marilyn Lumpp, Margaret Wetmore. Second row: Shirley Peters, Joan Stelzer, June Pence, Lorraine Sorensen, Betty Steek. Third row: Ruth Berkow, Mary Jean Brandt, Marianne Ruesch, Jane Sparkman. Bottom row: Stanley Martin, Tom Cook, Howard Speer, Robert Blessing, Philip Bornarth, Tom Wetmore.



Scrap Drive

This year, for the first time in our school's history, we had a scrap drive. All patriotic students industriously trudged to school with a piece of scrap. Some rendered their services by hauling heavier pieces of metal in cars. Miss Harbert's activities committee was in charge of the entire project, and here they are grouped around the budding scrap heap.

Left to right: Annaliese Nachbauer, Mildred Schmidt, Betty Heiniger, Lois Corrin, Laurie Rogers, Eleanor Klmgae, Tom Davidson, Jim Lannert, Marion Robertson, Joan Holdinott, Ted Carlyle, Bob Pasek.



Red Cross Council

The Red Cross has always done vital work, and in time of war that work is doubly important. The four students on the Junior Red Cross Committee and their sponsor, Miss Line, have done a fine job during the past year. The committee attends a meeting of the Chicago chapter of the Junior Red Cross Council once a month to exchange views and ideas with representatives from other schools.

Seated, left to right: Miss Alice Line, Leota Harper, Bill McNeill. Standing: Don Sandin, Joan Cutler.





Color Guard

This military row is comprised of the conscientious members of the Nilehi color guard. To these students falls the honor of posting colors at assemblies, basketball games, and other school events. Under the sponsorship of Mr. Clifford Collins, the color guard has worked hard "to bring new glory to Old Glory."

Left to right: Jean Kelley, Frances Dietsch, Dorothea Wolcott, Alison Ash, Fred Borneman, Richard Dobroth, Barbara Abbott, Doris Hampton, Shirley Gregor, Lenore Peters, Nancy Perrin.



Monitors Club

Most of these members of the Monitors Club look happy, but Jack Bylsma and William Anderson seem rather glum. Perhaps they haven't caught their quota of people without passes yet. Ed Keegan is very slyly looking out of the corner of his eye for his next victim. If you are stopped without a pass by these students, you will at least receive a smile with your detention.

Top row, left to right: Mr. Ihne, Ed Keegan, Paul Koburi, Charles Olsen, Jack Bylsma. Second row: Rogene Scholow, Lucille Anderson, Gwendolyn Tiseth, Geraldine Krystak, Rose Sliva, Shirley Radtke. Bottom row: William Anderson, Danny Sullivan, James Hols, Violet Berens, Helen Dahm.



Ushers

All lined up and looking pretty for the camera is this group of ushers and usherettes. These boys and girls have varied responsibilities. They may be seen ushering at dances and basketball games, or selling candy at some school affair. In general they prevent a lot of confusion by helping to keep things in order.

First row, left to right: Bernadette Creaney, Dorothy Dais, Jane Permer, Peggy McNeill, Joanne Gubbins, Anita Schmid, Shirley Bartleson, Marion McClain, Donna Flynn, Helen Dahm, Janet Hayes. Second row: Charles Jaap, Howard Speer, Charles Olsen, Donald Anderson, Bill Ottens, Marvin Struch.



Home Room Presidents

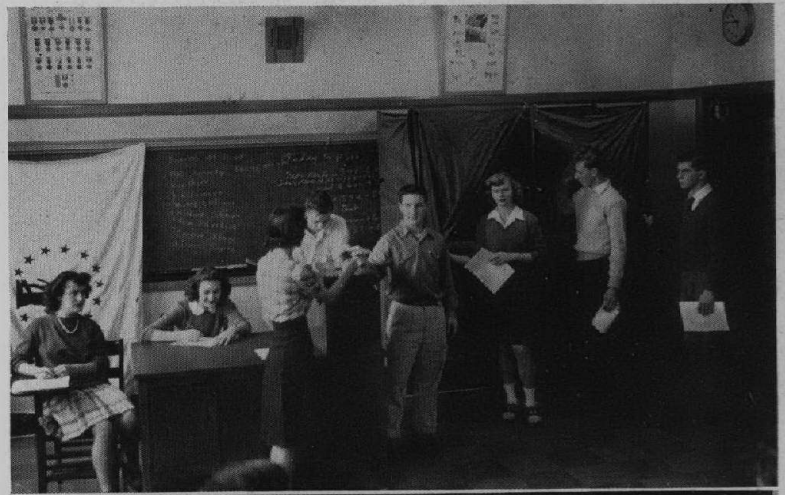
They may not be running for a fourth term and they may not be faced with international politics, but it is chiefly on their shoulders that the problem of home room administration rests. As the home room is the nucleus of Nilehi student government, the office of home room president is an important one.

Top row: Robert Pearson, Roger Loejgren, Fritz Kreiss, Dick Fuhr, Donald Lundberg, Howard Haynie. Second row: Pat Price, Marion Schubert, Helen Kuehne, Jack Price, Shirley Lawrence, Mary Kopp. Bottom row, left to right: Bob Farr, John Kokum, Bob Force, Gus Wagner, Bill Shay, Bob Hartney.

Problems Election

In this picture you see a group of Nilehi's Trojans demonstrating their ability to take their positions as citizens in these United States. These model elections are held in Miss Harbert's Problems 7 classes so that seniors graduating from N.T.H.S. will be familiar with the national voting procedure.

Left to right: Helen Howard, Bernice Tolzien, Alma Gatzke, Ned Stowe, Bill Meyer, Mary Ann Wenzel, Bob Farrell, Gordon Peterson.



Library Staff

It isn't hard for these five hard-working students and the rest of the library staff to find things to do. Under the capable direction of Miss Myers, students manage the library, and also take advantage of its splendid facilities in many class projects.

Left to right: Irene Clarkens, Marilyn Proesel, Laine Morse, Lois Pierce, Jack Massmann.



United States History Classes

The United States history classes don't limit their current events discussions to the United States. Here they are found holding a panel discussion of the British Empire. In order to gain an accurate and concise picture of the world today, once a week there is a current events day with each class member contributing information.

In front, left to right: Mary Ellen Racine, Virginia Waldin, Pat Canty, Miss Kranz.



Photography Class

Candidly speaking, this is the fiendish group of Trojans that is responsible for "shooting" many an unsuspecting individual around Nilehi. However, without a doubt, Mr. Benette and the members of the photography class deserve a well earned pat on the back for their tireless efforts; and for those many memories which they have preserved on film within this book, we all owe them a debt of gratitude.

Top row, left to right: Harry Jensen, Dennis Bornarth, Fred Bernard, Marvin Struck, Willard Maier, Charles Jaap, Mr. Benette. Third row: Fred Borneman, Tom Allen, Bill Ottens, Ted Ebert. Second row: Betty Smith, Beverly Kuhn, Robert Swanson, Wally Piehler, Bill Stielow, James Casson, Paul Winger, Dick Mussil, Nick Boznos. Seated: Helen Kuehne, Mae Kennedy, Doris Willney.





Christmas Decorations

Nilehi owes a debt of gratitude to the aspiring Trojans who planned and produced this year's Christmas decorations. The angels and stable scene pictured here were a part of the display which adorned the front vestibule several weeks preceding Christmas; and the admiration expressed by these students typifies the reaction of all who saw the completed scene.

Left to right: Lois Ostrum, Doris Willney, Dolores Johnson, Charles Bailey, Joan Hoddinott, Lucille Anderson, Marion Robertson.



Pumpkin Carving

The handsome brute in the center is really some pumpkin, isn't he? In commemoration of Hallowe'en this dream man, along with a few of his relatives, was carved and designed by the artistic students of Mr. Wilkins' art classes. Applying the final touches are Joan Hoddinott and Mathew Boemmel.



Geometric Tree

Triangles, hexagons, octagons, squares, and many other geometric figures formed the decorations for this very mathematical Christmas tree fashioned by the geometry classes.

Christmas Tree

Variety was injected into the Christmas decorations this year when juniors erected the Christmas scene over the front doors. Also the Christmas tree was moved from its old traditional spot to the rotunda on the second floor.



Pumpkin Faces and Masks

If you think you recognize some long lost friend in this photograph, we beg to inform you that you have committed a dreadful error. The artists who created these masterpieces made it quite clear that any resemblance to persons living or dead was purely coincidental.

German Club

This smiling array of faces composes the German Club, guided by Miss Kranz. The club actually consists of 17 members with Ann Marie Schirra, chairman; Stanley Martin, treasurer; and Hildegard Jarosch, Foreign Language Club representative. In their Friday meetings these students do their entertainment planning, and incidentally do a bit of conversing in German.

First row, left to right: Stanley Martin, Herbert Jarosch. Second row: Mars Bishop, Nick Bogner, Herbert Behrens. Third row: Allan Karlove, Don Lundberg, Martin Zobus, Miss Kranz, Betty Rae, Robert Cleary, Robert Roman, Ray Didier.



Public Speaking Class

Something new was added to Nilehi this year in the form of public speaking courses in connection with the regular English classes. This is a typical scene, with Jim Lannert doing the honors as speaker. Standing is Miss B. J. Allen, student-teacher from Northwestern, who seems to be enjoying the speech immensely.

Front, left to right: Miss Allen, Jim Lannert. First row: Bob Arnold, Paul Hoppe, Marjorie Lange, Bill Nissen, Eugene Roman. Second row: Jim Moore, Marilyn Tilton, Bob Pasek, Bill Meyer. Third row: Barbara Pearson, Edna Southworth.



Latin Banquet

Following tradition in the old Roman custom, Horace Lindecker is seen carrying Ann Marie Schirra over the threshold! Dressed in Roman costume, these students had a typical Latin wedding, and participated in a Roman reception feast afterward. Everything was as authentic as possible, even to reclining during the banquet.

Left to right: Margery Plummer, Lorraine Splett, Virginia Waldin, Ann Marie Schirra, Horace Lindecker, Tom Wetmore, Jane Taylor, Fred Bernard, Tom Davidson, Shirley Gregor, Nancy Perrin, Pat Lannert, Elaine Dali, Gordon Peterson.



Foreign Language Club Representatives

This intelligent looking octet can speak in French, Spanish, Latin, and German. Each language class sends one representative to this delegation. It is they, as an executive group, who are responsible for planning and putting on all of the club parties.

Left to right, standing: Pat Canty, Tom Davidson, Dorothy Gustafson, Sherrill McDonald, Joan Flavin. Left to right, seated: Peggy McNeill, Herbert Jarosch, Norman Hall.





Parents' Night

On Tuesday, November 9, the second annual Parents' Night was again held for the fathers and mothers of Nilehi. The school, whose daytime beauty was surpassed by its sparkling illumination, stood cloaked in a mist of radiance—a truly appealing and impressive sight for the nocturnal visitors.



Parents' Night

The enthusiastic parents started the evening with an air of self-confidence; but before many minutes had elapsed, an atmosphere of bewilderment seemed to preside through the corridors. The scowling lady at the right was ardently trying to decipher Junior's illegible handwriting, while the gentleman standing next to her exemplifies one of the evening's many lost souls.



Parents' Night

Ah, at last an oasis looms in the midst of hopeless confusion—the biology room! Everyone felt quite at ease except for the mother at the fourth table from the front, who just couldn't help those uncomfortable glances at the pickled specimens on the shelf. Now you know what Susie goes through every day—and just before lunch, too!



Parents' Night

The way to a student's brain is through his stomach; and so, in accordance with the normal school day, there was food. The parents, in the role of their offspring, of course, had unusually hearty appetites; and the breadline was its usual crowded self.

Nilehilite Staff

This is probably the only time you have ever seen this active group in a motionless study. They comprise the staff of the Nilehilite, and they have spent their "school days" in a fast and furious attempt to keep you posted on Nilehi's doings. And so for their hard and conscientious work, we offer our congratulations to this year's staff for a high stack of extra-special 1943-44 "Nilehilites."

First row, left to right: Dolores Johnson, Jack Price, Nona Holappa, Harriet Hart, Joan Taylor, Doris Hampton, Jean Kelley, Barbara Mason. Second row: Mr. Blanke, Shirley Lawrence, Shirley Kohrer, Joan Cutsler, Mary Ellen Racine, Ed Podolinsky, Barbara Horton, Jim Rasmussen, Charles Bailey, George Lutz.



Senior Section

As we close this section of the yearbook, we have a word to offer you on our behalf and to give credit where credit is due. We have first to thank the senior-faculty section for their unusual features of this year. The members of this section, under Miss Frieda Ellerbrake, offer you the fruits of their endeavors with the hope that they please.

First row, left to right: Helen Roberts, Jane Permer, Miss Ellerbrake, Pat Bennett, Pat Lannert, Eleanor Koch. Second row: Dorothy Gustafson, Lois Heiniger, Laurie Shade, Anna May Schmidt, Peggy McNeill, Rosemary Lutz.



Financial Section

None of the book would have been possible if it hadn't been for Miss Doris Sayre and the financial group. Managing all the practical angles of producing an annual is a long and tedious job, with few obvious rewards. Here we can only thank them for their efforts, and credit them with the entire book.

Left to right, seated: Shirley Kohrer, Frances Dietsch, Bernice Stoll, Hildegarde Javosch, Miss Sayre. Left to right, standing: Beverly Kuhn, Lola Werhane, Nancy Perrin.

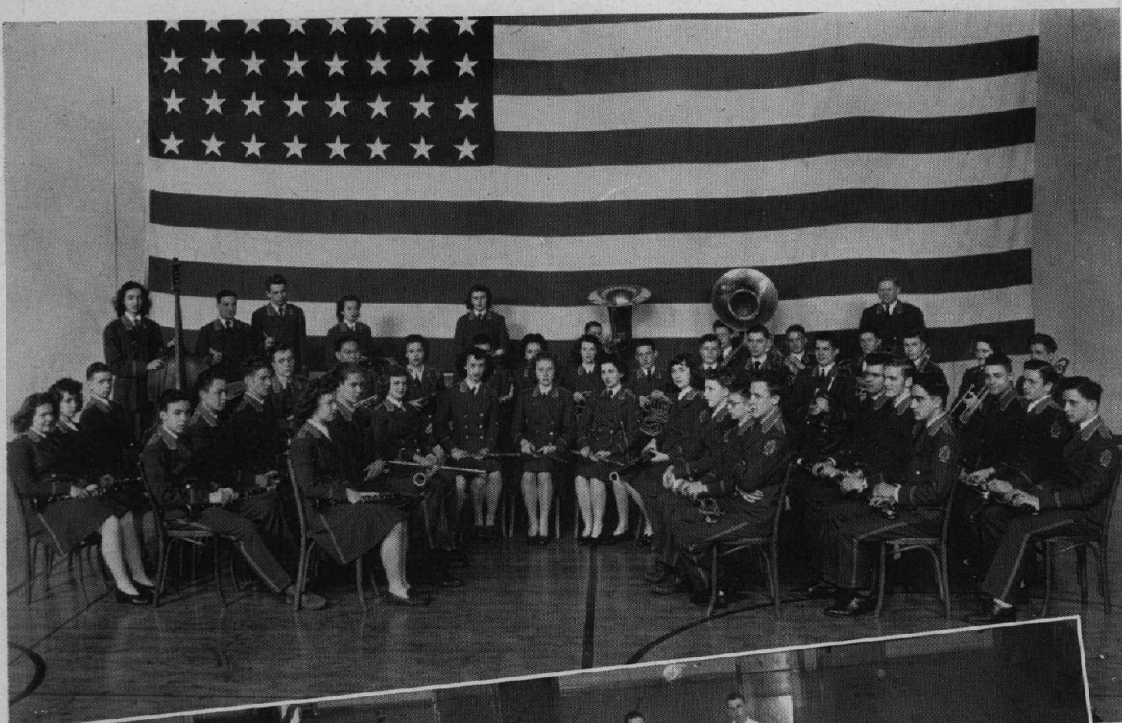


General Section

We come lastly to the "mop-up" section. All pictures of general groups, sports, and underclassmen are handled by the general section, whose work you might say rounded off the book. This group, with Mr. Wilbur Blanke as adviser, took over the rest of the book and finished up your "1944 Reflections."

First row, left to right: Dolores Johnson; Margaret Donovan; Harriet Hart, Editor-in-Chief; Nancy Hall. Second row: Mary Louise Larson, Doris Hampton, Mary Jean Brandt, Joan Cutsler, Leota Harper, Nona Jayne Holappa. Third row: Barbara Mason, Ed Podolinsky, Bob Ellis, Joan Rouse, Jim Rasmussen, Mr. Blanke.





Band

True Trojans indeed are the fifty members of the Nilehi band. This organization, under the direction of Mr. Collins, has displayed the highest quality of loyalty and school spirit by providing pep and color at several school assemblies in addition to every home football and basketball game. At the Spring Music Festival the work and combined efforts of every band member resulted in a remarkably professional performance, and the appearance of these capable musicians proved of major importance in making the concert such a success.

First row, left to right: Nona Holappa, Herbert Behrens, Muriel Farrell, Dolores Brooks, Grace Kiehm, Harriet Hart, Leota Harper, Dave Wilkinson, Tom Wetmore, Gordon Brown. Second row: Ken Bennett, Eugene Anderson, Peter Hegarty, Wayne Hansen, Frank Hiratsuka, Betty Farr, Stanley Martin, Renee Hain, Dorothea Wolcott, Stewart Munroe, Harold Reis, Milan Voyradich, Horace Lindecker, Bob Damman, Quentin Blewett, La Verne Grover. Third row: Bernice Stoll, Marilyn Gustafson, De Forest Hamilton, Alison Ash, Bill Meyer, Howard Lindstrom, Jackie Perrin, Lorraine Krier, Charles Massman, Bob Farrell, Roger Laefgren, Martin Alterini, Mr. Collins, Herbert Jarosch, Lois Lumpp, Earl Kymicek, Harry Jensen, Don Falknor, Louis Nachbauer.

Orchestra

Another organization which deserves a great deal of credit is the orchestra. Though the playing personnel of thirty is somewhat smaller than that of the band, the patience and encouragement of their leader, Mr. Collins, has spurred the members on to enviable accomplishments. The orchestra's major appearance of the year was at the Spring Concert where they gave an admirable performance, sharing equal honors with the band.

First row, left to right: Hortense Harles, Herbert Jarosch, John Lane, Marion Nachbauer, Robert Boehning, Ted Roess, Nona Holappa, Grace Kiehm, Harriet Hart, Leota Harper, Alma Patzke, Marilyn Reis, Marilyn Gustafson, Raymond Nelson. Second row: Mr. Collins, Frank Hiratsuka, Renee Hain, Stanley Martin, Dorothea Wolcott, Tom Wetmore, David Wilkinson, Robert Dammann, Harry Jensen, Nancy Burge. Last row: Alison Ash, Donna Flynn, Bill Meyer, Howard Lindstrom.

Girls' Glee Club

All these feminine voices promise some very enjoyable singing. These girls make up the Girls' Glee Club. They sing mostly for their own enjoyment, but have appeared in public. One of their best performances was at the Spring Concert. They are under the direction of Miss Klaus.

First row, left to right: Norma Keerns, Delores Hawkins, Joan Taylor, Lois Kerley, Jane Taylor, Carol Rugen, Joan Flavin, Shirley Kutz, Lorraine Mandeville. Second row: Delores Mohrbacher, Loretta Karnatz, Mary Coulter, Helen Hoffman, Gertrude Dettmer, Lola Werhane, Margy Anderson, Dorothy Horitz, Norma Lange, Miss Klaus. Third row: Evelyn Plath, Vivian Oslund, Betty DuMont, Dorothy Breden, Rosemary Breden, Lorraine Shude, Ellen Anderson, Jerry Rochow, Jean Krisor, Gertrude Ray. Fourth row: Joan Trietsch, Lois Corrin, Shirley Rohrer, Jean Streeter, Beverly Pearson, Barbara Mason, Lois Ostrom, Kathryn Sloncen, Corrine Sloncen, Ariene Ruesch.

Choir

To most of us the choir needs very little introduction. The group is composed of the school's best vocalists and at the present time the membership numbers about forty. This year the choir made several appearances at grade school P.T.A. meetings, but their major performance was at the Spring Concert where they proudly displayed their beautiful new choir robes.

First row, left to right: Harriet Murray, Elaine Linstead, Dorothy Dahm, Peggy McNeill, Warren Mueller, Frank Backes, Don Sandin, Muriel Hendrickson, Jean Kirscht, Dorothy Gustafson, Miss Clara Klaus. Second row: Rose Marie Norum, Lorraine Hansen, Shirley Huber, Lorraine Nelson, Sally Porter, Phil Egebrecht, Joan Hoddinott, Lois Batty, Leota Harper, Lois Heiniger, June Fredrichs. Third row: Elaine Dall, Mary Lou Coulter, Earlene Robinson, Marian McClain, Paul Hoppe, Gordon Peterson, George Dyrsen, Irwin Krmicek, Margery Plummer, Alison Ash, Margaret Andreassen. Last row: Mary Clark, Elmer Valkenaar, Nancy Cates, Don Christensen, Jane Permer, James Kätzel.



Seen Here . . .

Behind the footlights

Getting in the swim

Star gazers

Cheek to cheek

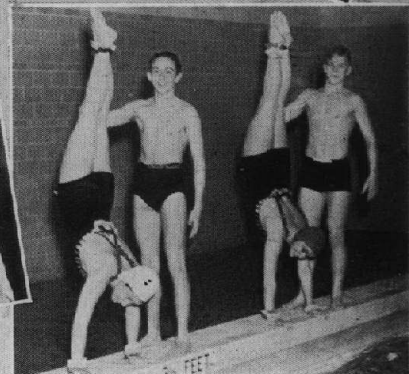
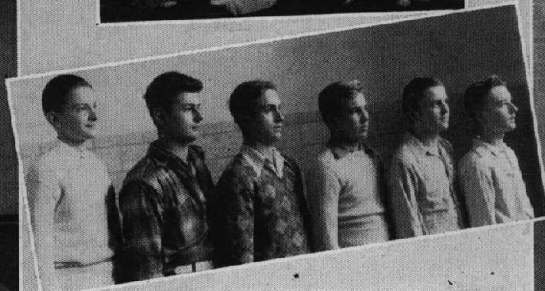
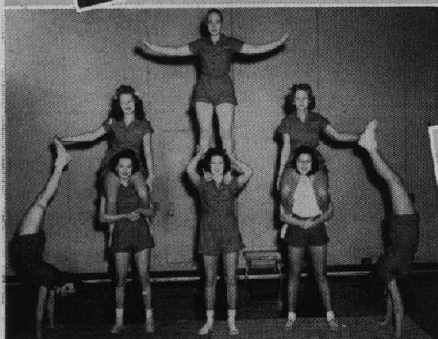
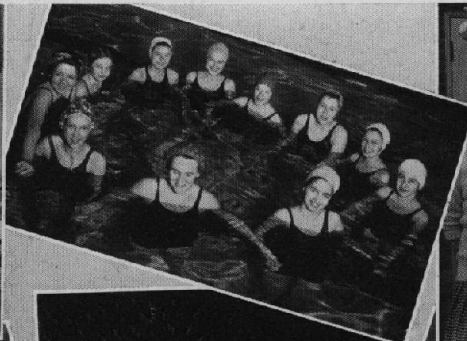
"L" is for leaders

Hip, hip, hurray!

Tumbling for a fall

Ah—men

Jack-in-the-Box





... *And There*

Winter walls of Troy

Swing and sway

Singing on to victory

That cuddly Davidson boy

Proposal?

The Voice —Ahhhhh!

Diligence plus

Zoot flutes

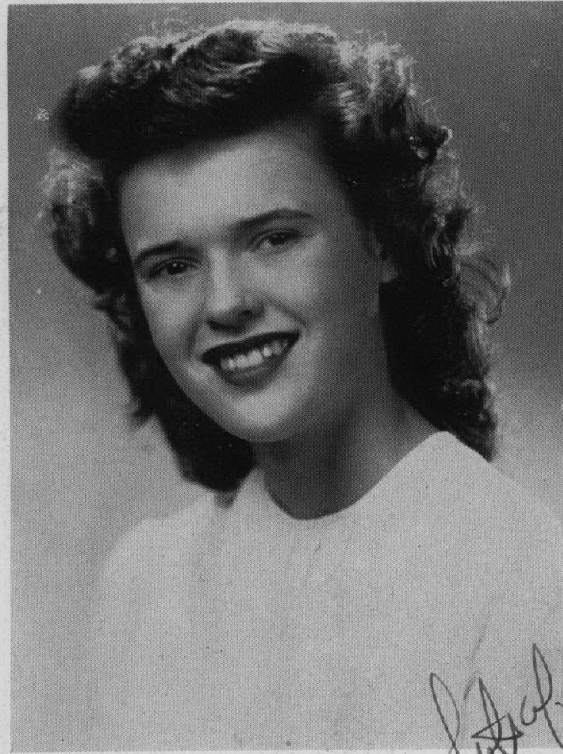
On the shorter side

Jail House Jamboree

A-bus-ing the privilege

Turnabout

Helen of Troy



Rae Rita Olson

*Put away thing nice
Rae*



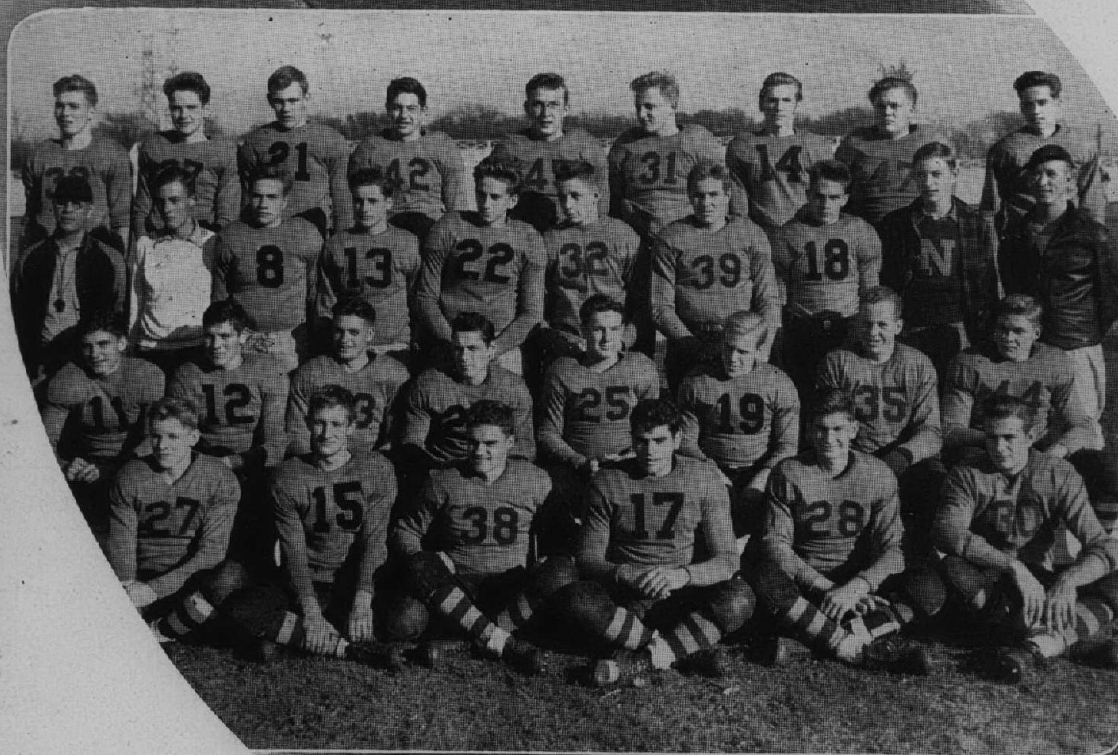
June Ohlson



Marilyn Davis

A new tradition was begun at Nilehi this year with the choosing of "Helen of Troy." All students who had purchased annuals were allowed to cast a vote for their favorite beauty. A second voting limited the choice to three, whose pictures were submitted to John Robert Powers for final judgement. He considered natural beauty and intelligence especially in making his choice. It is hoped that this contest will become an annual custom at Nilehi.

Trojan Kick Off



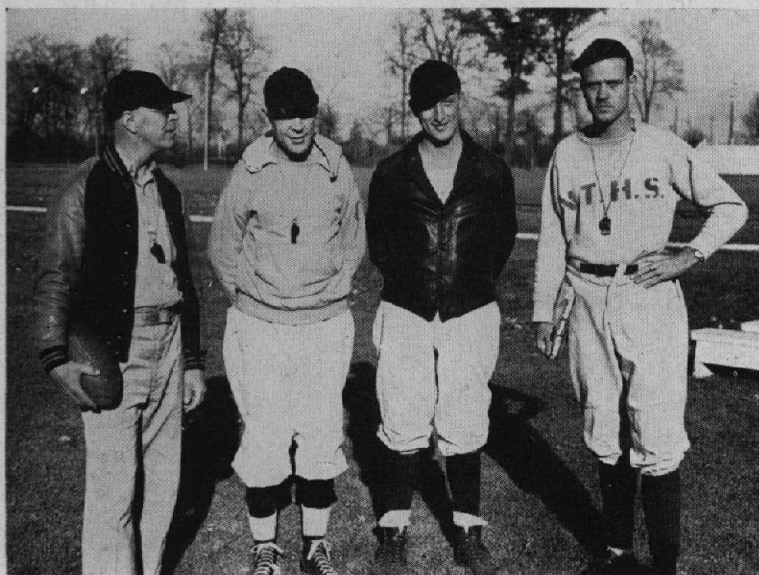
Top row: J. Fredericks, J. Lannert, B. Warehan, F. Tolsien, C. Liebrandt, B. Weidenmiller, Q. Blewett, F. Buofford, and B. Ellis.

Second row: Coach Isaacson, B. Berkow, B. Humberg, J. Price, B. Arnold, C. Valkenaar, B. Roman, B. Sandin, M. Voyvodich, and Coach Kent.

Third row: A. Schmidt, R. Piastrelli, C. Gockenbach, J. Ritter, B. Meyer, D. Christensen, B. Shay, and B. Denley.

Bottom row: J. Moore, B. Gifford, J. Rasmussen, E. Dean, J. Harrer, and J. R. Harrer.

Who's Who



1943 FOOTBALL RECORD

Evanston J.V.	6	N.T.H.S.	26
Leyden	16	"	20
Warren	13	"	13
Crystal L.	14	"	19
Arlington	0	"	20
Lake Forest	12	"	33
Libertyville	37	"	13



Brain Department (Upper picture) The backbone of the '43 edition of gridiron warriors was the Trojan coaching staff. Reading from left to right are: Mr. Isaacson, Mr. Mackey, Mr. Kent, and Mr. Dees.

Touchdown (Lower picture) Just another tally for the Trojans who thoroughly trampled their old rivals Lake Forest 33 to 12. This was the Trojan's fifth consecutive victory of the year. At this stage of the game the Scouts had lost most of their fight and were ready to accept defeat.

Jim Moore, half-back

A fine team player who ran at the right halfback spot for the Trojan eleven. Jim is a senior.

Bruce Gifford, center

Bruce was the Troy first string center all year. A senior who played a whale of a defensive game.

Jim Rasmussen, end

Another senior who really showed he had what it takes as the season went on.

Ed Dean, end

A junior, who played in the center of the line last year, but switched to end this year to play a consistently good game.

Jim Harrer, guard

One of two sophomores good enough to make the varsity. Jim was handicapped because of injuries.

Jack Harrer, half-back

Jack, a senior, was elected the team's most valuable player. He ran over (not around) opponents.

Art Schmidt, end

A junior who could snag passes, tackle, and kick extra points.

Roland Piastrelli, tackle

A senior who did a great job in filling Fritz Tolzien's shoes when Fritz was injured.

Chuck Gockenbach, half-back

Another senior who will be missed next year. Chuck could run, pass, and if need be, kick.

Jack Ritter, quarter-back

Jack, a senior, was one of the best blockers on the team and the most vicious tackler.

Bill Meyer, full-back

A terrific little runner who plunged like a fullback, but was as shifty as a halfback. He is also a senior.

Don Christensen, quarter-back

Christy, a junior, was a real scrapper and will be back to do more of the same for next year's eleven.

Chuck Valkenaar, guard

Chuck played a steady game all year. He also will graduate.

Bob Roman, end

The only other sophomore to make the team. Bob turned in some nice playing.

Bob Sandin, center

A senior who really did some fine replacement work.

Jayvees

Jack Fredericks, half-back

A junior who topped everyone in the scoring department. He was one of the fastest men on the team.

Jim Lannert, end

Played some great ball in the early part of the season and then came injuries. He is a senior.

Bob Warehan, guard

A senior who knew what he was doing and played good football whenever he was called upon.

Fred Tolzien, tackle

A senior who captained this year's outfit. He played top football until late in the season when an injury forced him to the sidelines.

Charles Leibrandt, full-back

Senior Chuck Leibrandt did just about everything except referee this year. He called plays, ran, passed, blocked, and kicked.

Bob Weidenmiller, guard

Bob, senior lineman, bolstered the line whenever he was in there. Good on offense, even better on defense.

Quentin Blewett, center

A hard working sub who is a senior.

Bob Ellis, end

A hard fighting senior who made it tough on anyone trying to go around his end.

Bill Shay, tackle

Bill was all a lineman should be plus a great passer. He pulled out of the line several times to connect on long heaves.

Bob Denley, guard

Still another senior who won't be back to do or die for old Nilehi. Bob did more than his share in making the '43 season a success.

Bob Humburg, guard

Bob, a senior, plugged away all year.

Jack Price, half-back

Jack, another senior, was out most of the season with a sprained ankle.

Bob Arnold, full-back

A good player, who could be used next year.

Frank Boufford, guard

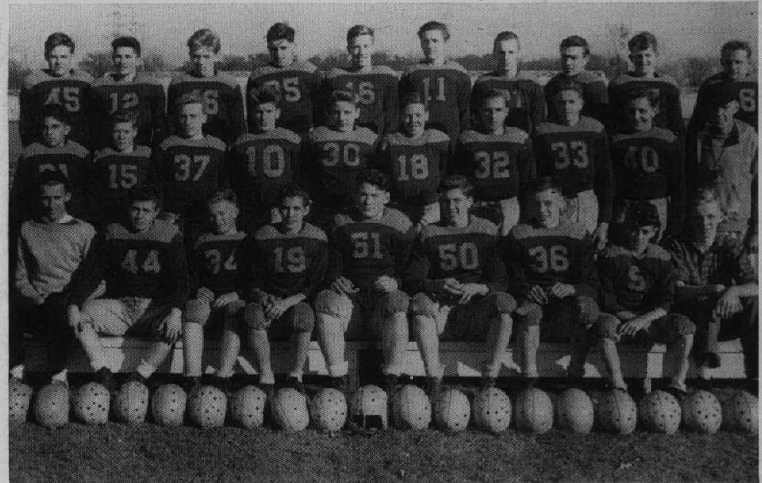
An outstanding guard who was one of the main factors in the Trojan forward wall.

Milan Voyvodich, manager

This was Milan's fourth year as manager of the Trojan eleven. And may we extend our congratulations to a swell guy.

Bob Berkow, manager

Another boy who received praises from the coaches for his splendid work as manager.

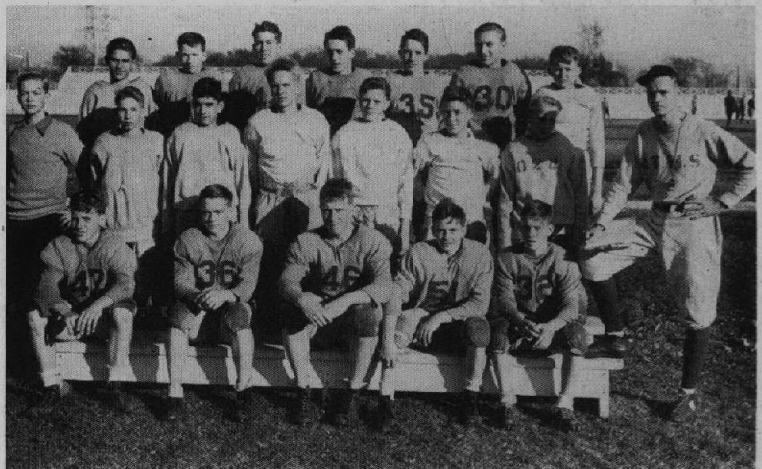


JUNIOR VARSITY

Leyden	0	N.T.H.S.	12
Evanston J.V.	13	"	0
Maine Fresh-Soph	2	"	0
North Park Academy	6	"	7
Arlington	0	"	45
Maine Fresh-Soph	6	"	12
Evanston Fresh-Soph	12	"	0

FRESHMEN

Evanston	13	N.T.H.S.	0
Maine	19	"	0
Arlington	0	"	25
Maine	26	"	6
Evanston	27	"	0



Junior Varsity Top row, left to right: D. Dye, M. Alterini, D. Nepstad, N. Boznos, E. Heartstedt, D. Falkner, G. Riha, R. Doetsch, R. Marquette, A. Steif. Second row: S. Mayer, B. Cook, S. Noesen, J. Poolell, R. Swanson, T. Sando, J. Snyder, L. Robinson, L. Nachbauer, Coach R. Mackey. Bottom row: R. Nelson mgr., F. Bernard, R. Loefgren, D. Comstock, J. Ehmer, L. Lehman, M. Bishop, J. Fuller, W. Hardenbergh, mgr.

Freshmen Top row, left to right: B. Pearson, J. McNeely, J. Crawford, B. Witte, D. Sandin, J. Jaski, M. Taylor. Second row: R. Nettland, mgr., J. Katsel, J. Dahm, B. Farr, H. Renis, E. Valkenaar, B. Boehning, Mr. Dees. Bottom row: E. Carlson, H. Behrens, F. Williams, B. Miller, D. Fisher.

Yeah, Team!



Wow, Some Team! Here are those vivacious young girls who led the cheering through victory and defeat. This varsity squad deserves a great deal of credit for the splendid way in which they brought out cheers from the crowd.

Giving out with that personality smile are, from left to right: Betty Farr, Ann Schirra, Betty Weldon, Lee Morse, June Ohlson, and Grace Nelson. Betty Farr, June Ohlson, and Grace Nelson will be the only cheerleaders who will be leaving in June, thus a great deal may be expected of next year's squad, which will have three capable Trojanettes returning.



You'll See These Next Year. Indispensable to the junior varsity and freshmen squads are the junior varsity cheerleaders. These are the girls who do all of the hardest jobs and receive the least amount of glory. The training these girls have gone through will prove quite profitable next year when they step in the places left by the graduating varsity cheerleaders.

Cheering from left to right are: Barbara Horton, Ann McKeever, Pat Schirra, Millie Zavrel, Dolores Lauth, Charmaine Neutz, and Beryle Schwabe.

Evanston J.V., Sept. 25

Traveling to Evanston, the Trojan gridsters scored a knockout blow on the Wildkit junior varsity 26 to 0 in the season opener. The Men of Troy were slow to start but made up for it in the second and third quarters, scoring all of their points then.

Leyden, Oct. 1

The Trojans drew first blood in the first quarter with a sustained drive of 69 yards. The Eagles came back in the second with a safety and a touchdown but before the half ended Leibbrandt intercepted an Eagle pass, paving the way for another Trojan tally.

The second half found both teams scoring one apiece and the final score of the rough and tumble contest was 20 to 16.

Warren, Oct. 8

Taking for granted that the Warren game would be a pushover, N.T.H.S. was greatly surprised when they were the ones being pushed. Warren gave and asked no quarter and the Trojans were lucky to escape with a 13 to 13 tie instead of the defeat they deserved.

Crystal Lake, Oct. 15

Racking up their third victory in four starts the Trojan grid machine downed a fighting Crystal Lake eleven 19 to 14.

Starting off with their usual power and drive the Troys piled up two touchdowns in the first quarter but were unable to keep up the pace after scoring their tally in the second quarter.

Arlington, Oct. 22

The home team found easy pickings when they met the Cardinals, decisively trouncing them 20 to 0, making it four straight.

Scoring in every quarter except the last, Nilehi showed the fans some colorful offensive playing; and to top it off they played the best defensive ball of the season.

Lake Forest, Oct. 29

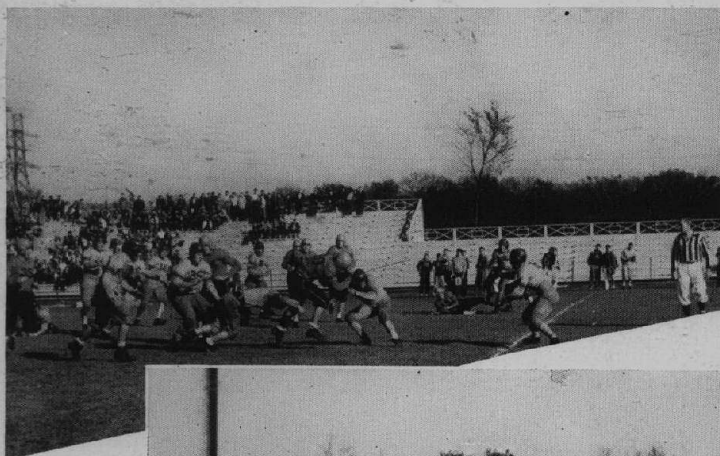
Reaching their top form the Trojan gridsters ran wild over a surprised Lake Forest squad, trampling them 33 to 12. This was the home team's fifth victory of the year.

Libertyville, Nov. 5

Proving to be much more powerful than expected, Libertyville's aggressiveness and spirit to fight back snowed the Trojans under 37-13. Although overpowering the Wildkits in the first half, the Trojans were unable to cope with Libertyville's point producing machine in the second half; thus marking up the Trojan's first defeat of the year.



Homecoming



Line Plunge

Jack Harrer, left halfback, smashes his way through the Scout line for another big gain. Bill Shay (35) trails the play while Bruce Gifford (15) gets a worm's eye view of the goings on.

Arlington Falls

Bucking the line was the key to the Trojan success over Arlington. This method of attack wore down the smaller line of the Cardinals, enabling the Troys to win by the lop-sided score of 20 to 0. Pictured here is Rasmussen (38) ready to join the interference.

Extra Point!

Arty Schmidt converts the extra point from placement after one of five Nilehi touchdowns in the Lake Forest game. The Trojan line holds while the attempt is made. Frank Boufford (in the center of the picture) is the big half of the Troy line.

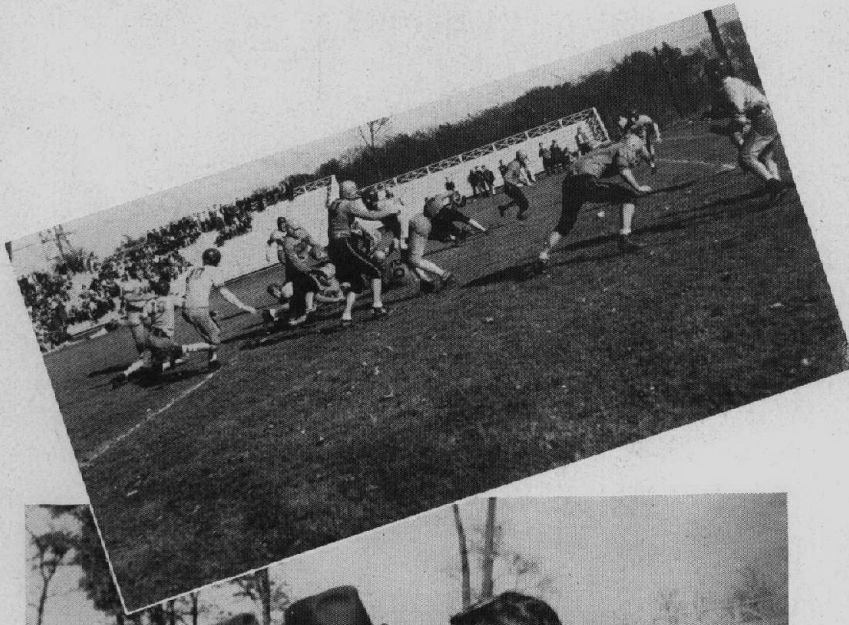
Hoboes

This is part of the Homecoming celebration. The hoboes above are Elaine Dall and Mars Bishop. These two were elected King and Queen of the hoboes. In the background is the Nile band which played at all the home games.

Drop Kick

Here Harrer is dropkicking for the extra point in the Lake Forest game. This is another example of the strength the Trojan line possessed. Players visible are Rasmussen (38), Leibrandt (45), Ritter (20), Boufford (47), Shay (35), and Schmidt (11).

Action



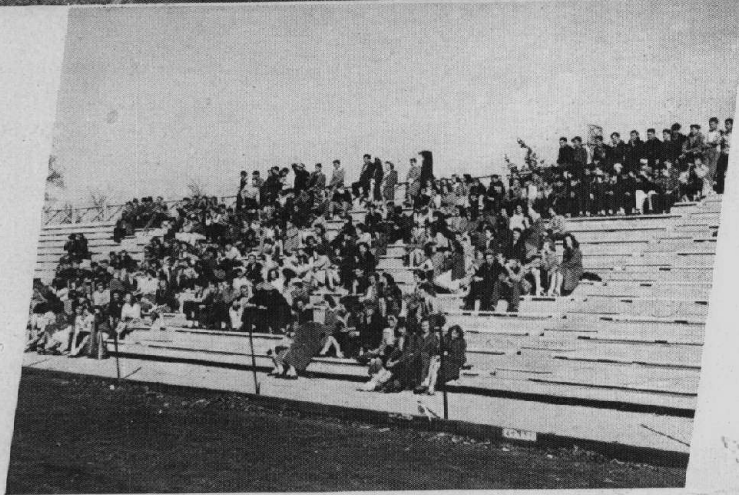
Teamwork

Executing a perfect deception play, the Trojans opened a beautiful hole for Harrer (30) who plunged his way through for another touchdown against Crystal Lake. This proved to be a tough game for the Trojans but they were capable of it, coming through with a 19 to 14 win.



First Aid

After being shaken up quite a bit in the second quarter of the Arlington game, Boufford (47) finally had to leave the field. Pictured here are Coaches Isaacson, Kent, and Mackey, who appear worried about Bouf's injuries.



Trojan Spirit

The crowd (what there was of it) appears to be pretty happy, and why shouldn't they be, for the Trojans were in the process of trouncing Lake Forest by quite a huge score. The cheerleaders on the left did a great job that day making up for the small attendance.

Swish!



VARSITY BASKETBALL TEAM

Top row, left to right: Coach Bob Mackey, Charles Leibrandt, Grant Kuhn, Jack Harrer, Jack Fredericks, Eugene Putnam. Second row: Mark Jenkins, Jim Moore, Gus Wagner, Art Anderson. Bottom row: Bob Sandin, Chuck Gockenbach, Roland Poehlman.

**N.T.H.S. BASKETBALL
RECORD 1943-44**

Varsity		
Mr. Mackey		
N.T.H.S.	27—New Trier	41
"	19—Evanston	31
"	34—Waukegan	25
"	31—Maine	35
"	39—Leyden	21
"	53—Arlington	24
"	52—Libertyville	44
"	54—Alumni	43
"	41—Highland Park	31
"	41—Libertyville	34
"	32—Highland Park	31
"	63—Warren	29
"	40—Leyden	25
"	31—New Trier	29
"	44—Arlington	39
"	41—Evanston	36
"	53—Maine	40
"	40—Zion	25
Regional Tournament		
"	36—Zion	30
"	29—Libertyville	50

**N.T.H.S BASKETBALL
AWARD WINNERS
1943-44**

MAJORS

- A. Anderson
- J. Fredericks
- C. Gockenbach (Capt.)
- M. Jenkins
- C. Leibrandt
- J. Moore
- R. Poehlman
- E. Putnam
- G. Wagner

MINORS

- G. Kuhn
- R. Sandin

HOW THEY STAND

Northeast Conference

	W	L
Niles	7	0
Crystal Lake	4	1
Libertyville	5	2
Woodstock	2	2
Leyden	2	5
Arlington	2	8
Warren	1	5

Five School Group

Niles	7	0
Libertyville	4	2
Arlington	2	4
Leyden	2	5
Warren	1	5



Mighty Good

New Trier

The Trojans opened the 1943-44 basketball season by losing to an experienced New Trier team 27 to 41. As long as can be remembered Niles has never won an opening game in basketball, and this year was no exception. Gockenbach led the scoring for the losers with eleven points.

Evanston

The Trojans suffered their second straight defeat of the season, losing to Evanston 31 to 13. The score speaks for itself. Niles was outplayed on both offense and defense. The Trojans had not yet come into their own, but at various intervals the team showed signs of improvement.

Waukegan

The Trojans, playing before a packed house, whipped a good, fast Waukegan team to the tune of 54 to 45. Niles was unstoppable as they outscored the Brownies in every period. Artie Anderson led the assault with seven field goals and three free throws.

Maine

With a few bad breaks the Trojans were nosed out by Maine 31 to 35.

For three periods the game see-sawed back and forth with Maine possessing a slight edge. Towards the latter part of the game the Trojan team literally fell apart. Lacking a defense they could do nothing with their offense. Gockenbach left the game early, hampering the Trojan cause considerably.

Leyden

With blood in their eye, Niles stowed under a poor defenseless Leyden team 39 to 21.

The Trojans started out like a house on fire, scoring eighteen points in the first period. From that point on the Trojans had no difficulty whatsoever.

Libertyville

The Trojans turned back a strong Libertyville team 52 to 44. Niles trailed at half time 22 to 28. The third period saw a flurry of baskets with Niles getting the edge which they kept to the final whistle.

Back row, left to right: Mark Jenkins, Bob Sandin, Jack Fredericks and Jim Moore. Front row: Chuck Leibrandt, Grant Kuhn, Jack Harrer, Gus Wagner, Chuck Gockenbach, Gene Putnam, Rollie Poehlmen, Art Anderson, and Coach Mackey.

One For Gockenbach

Gockenbach scores a tally for the Trojans, putting them back in the game against the experienced Maine Pioneers. Jenkins took the ball off a fast break setting it up for Chuck, who drove in for the score.

Maine Scores Again

Another two points for a fast driving Maine quintet, putting the Trojans further behind. This was a tough game to lose for Niles which had won only one of its last three starts.

Time Out

Taking a well deserved rest are the first string cagemen. Sitting from left to right are: Chuck Gockenbach, "Boots" Jenkins, Jim Moore, Chuck Leibrandt, and "Mushy" Anderson.

J. V. Record

JUNIOR VARSITY Mr. Kent

N.T.H.S. 43—New Trier 29	N.T.H.S. 29—Highland Park 18
" 21—Evanston 27	" 42—Warren 23
" 42—Waukegan 29	" 40—Leyden 26
" 29—Maize 27	" 31—New Trier 26
" 32—Leyden 15	" 37—Arlington 17
" 37—Arlington 21	" 38—Evanston 27
" 22—Libertyville 18	" 34—Maine 36
" 42—Highland Park 38	" 40—Zion 20

Arlington

The Trojans won their third victory of the season by defeating Arlington 53 to 24. Using the "fast break" to a good advantage the Trojans took an early lead which Arlington never did overcome. The deadly accuracy of Moore, Leibrandt and Anderson spelled disaster for the Cardinals.

Alumni

The Trojans whipped an out-of-condition Alumni team 54 to 43. Ed Boyk put on a one-man show scoring 22 points and Stockfish accounted for 14. Anderson, Leibrandt and Moore led the attack for the victors.

Highland Park

For another win in the long series, the Trojan cagemen scuttled a hapless Highland Park five 41 to 18. Nilehi stressed defense in this game and did a fine job, allowing the Parkers only 7 points in the first half.

Libertyville

The team showed that it was rounding into championship class by turning back Libertyville for the second time, 41-43. This marked the sixth in a string of 13 straight wins.

Highland Park (Second Game)

The Trojans ran into considerable difficulty as they nosed out a 32 to 31 victory in their last appearance against Highland Park. Because of a slow start Niles trailed at the half 13 to 22.

Warren

Niles toppled a weak Warren team 63 to 29. Grant Kuhn of the reserves led the attack with 12 points while Wagner and Gockenbach rang up a total of 21 points between them.

Another Win

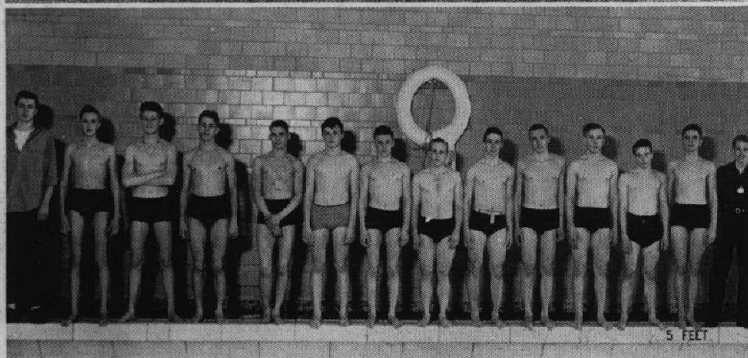
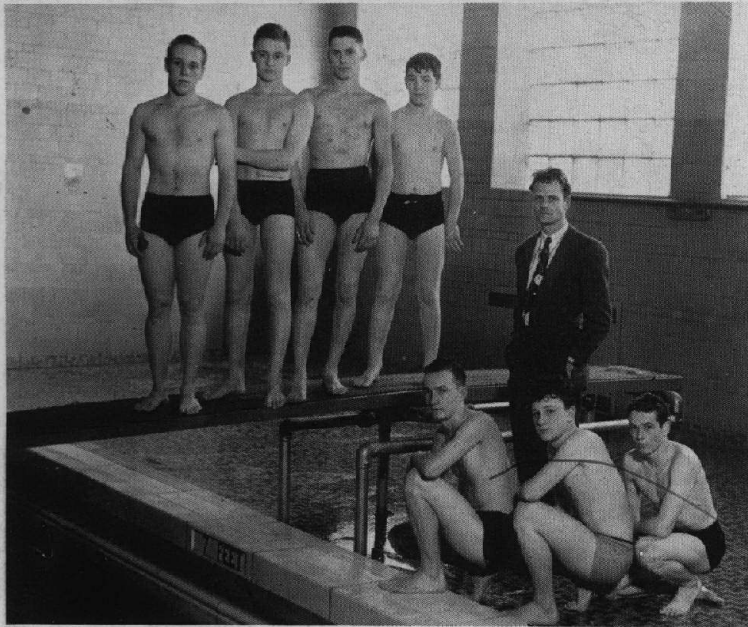
Following through for another straight win the Troy cagemen overcame a not too powerful Leyden five 40 to 25. The Trojans took the lead in the early stages of the game and kept it until the final horn.

Starting five: Mark Jenkins, Jim Moore, Chuck Leibrandt, Coach Mackey, Art Anderson, Chuck Gockenbach.

Top row, left to right: Coach Norm Kent, Allan Karlove, Bill Guenther, John Lane, Ernest Reimann, Don Falknor. Second row: Bill Kunkel, Harry Mueller, Dick Wilton, Ken Steskal, Ed Heartstedt. Bottom row: Louis Nachbauer, Walter Zust, Lucien Di Salvo, Stewart Monroe.

Back row, left to right: Coach Isaacson, Roger Racine, Frank Williams, Clyde Kreutter, Jim McNeely and Bob Farr. Front row: Ted Stockfish, Jack McNeely, Hank Dombrowski, Dick Fisher, Bill Sarles and Don Kunkel.





To Adam to a great guy!
 intelligent
 Bob Kirsch

New Trier

Before a capacity crowd the Trojans avenged their earlier defeat by beating New Trier 31 to 29. It was a game packed with thrills and excitement as the Trojans led 31 to 27 with 15 seconds to play. New Trier tried desperately but made only one basket when the gun went off ending the game.

Arlington

Arlington was another team to taste defeat twice during the season at the hands of the Trojans. Although they made a better showing than in the first game, the Trojans were never in danger. Score, 44 to 39.

Evanston

This was the second of three "revenge is sweet" contests. The Trojans turned back the powerful Evanston team 41 to 36, and won going away.

Maine (Second Game)

In the second game with Maine, Niles beat their opponents 53 to 40. The Demons were a good match for the Trojans until the last quarter when the Trojan team tore Maine apart with a bucket barrage that netted 20 points for the gold and blue.

Zion (First Game)

The Trojans played their last game with Zion and walked all over the foe to win by the lopsided score of 40 to 25. At no time was the Nilehi five in danger or threatened in the least.

Varsity Baseball

Top row, left to right: A. Schmidt, C. Valkenaar, K. Stezkal, B. Kunkel, P. Jacobs, W. Freimuth, F. Bernard, F. Zallar, and Coach Kent.

Second row: J. Hols, W. Meyer, J. Casson, W. Hughes, W. Stielow, R. Swanson, K. Bennett, J. Reijnenberg, D. Sandin, and J. Ritter.

Third row: B. Gifford, B. Anderson, C. Liebrandt, J. Lane, H. Jaehnke, C. Wagner, R. Piastrelli, and M. Jenkins.

Bottom row: J. Moore, B. Sandin, E. Dean, M. Dinelli, R. Poehlmann, E. Podolinsky, J. Rasmussen, and C. Gockenbach.

Swimmers

Don Christensen, Jim Tagney, Jack Ritter, Gene Hegarty, Mr. Dees, Bob Kirsch, Don Lyon, and Jim Holmes.

Freshmen Baseball

Top row: H. Bylsma, J. Jaski, E. Carlson, G. Dyrssen.

Second row: Coach Mackey, G. Pasek, E. Valkenaar, A. Heim, B. Bierbaum, H. Speer, F. Guirsch, D. Graf, R. Kepen, J. Hardenbergh, R. Racine.

Third row: R. Baker, E. Hegarty, R. Straw, C. Schlueter, R. Allen, C. Russell, D. DaDigian, E. Meyer, H. Renis, D. Olson, T. Stockfisch.

Bottom row: J. Wettengel, W. Sarles, A. Zichlke, B. Mueller, U. Larson, B. Dombrowski, P. Reiland, D. Kunkel, J. Katzel.

Swim Squad

Manager Rupert Roegner, Ted Egart, Bob Hartney, Jack Massmann, Jack Ritter, Don Lyon, Jim Tagney, Don Christensen, Don Sandin, Bob Kirscht, Tom Cook, Jim Holmes, Ray Didier, manager.

Stick to swimming
John Aliprandi
Minor Sports

Will to Win

Comparing the 1943-44 swim team with the teams that preceded it is very encouraging and promising for the future swim teams of Nilehi, for there has been news of the Trojans winning four meets. This is due to "the will to win" (quoting Coach Jesse Dees) and it is also due to individual ability and skill. The Trojans defeated Highland Park, Loyola Academy, Lake Forest Academy, and Elgin Academy. The most outstanding of these wins was the one against Loyola, for after losing their first meet here 40 to 28, Nile came back and beat them by 10 points, 38 to 28.

Batter Up!

The opening of the baseball season found plenty of material at Coach Norm Kent's disposal, for there was a large turnout including an ample supply of veterans. This raised the hopes of everyone for a bigger and better team and although the boys were up against some pretty tough pitching in their first games they soon found their batting eyes and increased the number of marks in the base hit column.

Preview of Track

Up to the Palatine relays April 29, the Trojan track squad had not as yet reached its peak. The team had failed to win a meet although it had shown signs of having the ability. The team boasts of such stars as Meinke, Aliprandi and Alterini, who are all juniors. Coach Dees predicts that we will have one of the best teams in our school history next season.

Track and Cross Country

Top row, left to right: R. Graf, J. Mc-Neeley, B. Farr, G. Boznos, J. Ehmer, B. Walmsley, H. Engebretson, N. Hall, E. Ballentine.

Bottom row: J. Suydam, H. Meinke, H. Lindstrom, R. Skallerup, M. Alterini, J. Aliprandi, S. McDonald, Coach Dees.

Howie Johnston rose to fame because of his outstanding ability as a distance runner. He was never defeated in two years competition in cross country races and holds records at every track he has competed on. Howie reached his peak in 1943 when he finished fifth in the state meet.

Boznos clears the bar

Fair ball!

Moore on his way

Dick Dobroth, Kenny Bennett, Sherrill McDonald, Emerson Dean, Gene Hegarty.



G. A. A.

G.A.A. Board Representatives

The girls pictured here represent one of the most active groups in the entire school—the G.A.A. Chosen as freshmen, they retain their membership during their four years of high school. The achievements of the G.A.A. are wide and varied and include everything from magazine campaigns to school dances. At the end of the school year the proceeds of the magazine drive are used to send an elected group of girls to G.A.A. camp for a week.

Top row, left to right: Jackie Perrin, Mary Jane Nelson, Carolyn Harnden, treasurer, Patricia Schirra, Eleanor Nelson.

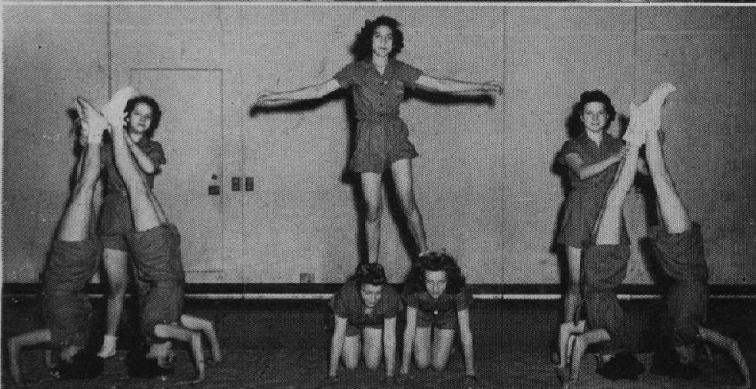
Bottom row: Beverly Kramer, secretary; Betty Bray, president; Ann Marie Schirra, vice-president.



Tumbling

Although this is the beginning group of tumblers, its members can do forward rolls, flips, back and front somersaults, and aerial flips. These girls exhibit their skill in performing daring feats at some of the programs sponsored by the G.A.A. The young acrobats may groan about their aches and pains now, but in twenty-five years they will be very glad that they still have their girlish figures, due to the complicated feats of their high school days.

Left to right: Lorraine Sovenson, Dorothy Anderson, Marilyn Herbert, Marianne Ruesch, Marilyn Lumpp, Shirley Peters, June Maier, Betty Steek, Ruth Berkov.



Jean Jump Planning Committee

Jeans, plaid shirts, plenty of jivy music—what does that sound like? Why, the Jean Jump, of course! This most unusual dance of the year was hugely successful as was indicated by the gigantic turnout. And here is the group of gals who really deserve orchids, for they did the planning and decorating.

Top row, left to right: Betty Bray, Beverly Kramer, Catherine Thompson, Pat Sheehan, Dolores Kwarnstrom, Phyllis Humphrey, Mary Louise Larson, Shirley Bartleson, Margaret Donovan, Betty Rae.

Second row: Dolores Lauh, Mildred Zavrel, Anita Schmid, Charlene Werner, Jane Sparkman.

Bottom row: Mary Jane Nelson, Carolyn Harnden, Pat Schirra.



Archery

There is no doubt in the minds of Nilehi's girls as to the popularity of the archery classes, which are directed by Miss Spikings. Judging from the classes' membership of thirty-six and also, by the smiling faces of the fair ladies pictured here, shooting arrows at an innocent little target has been found a rather enjoyable sport.

Left to right: Ann Marie Schirra, Betty Bray, Gerry Henberger, Pat Canty, June Ohlson, Miss Spikings, Dolores Wilson, May Robinson.



Splash!

Water Carnival Committee

Smiling, and for a change, relaxing, we find Miss Schaefer and the carnival committee. Besides arranging for rehearsals, costumes, participants, music, and so on, members of this group arranged and directed all the swimming numbers, and helped with the surrounding dolls. All that can be said is "Congratulations," and "Thanks" from the student body!

Front: Dolores Chapman. First row, left to right: Rosemary Racine, Miss Schaefer, Mickey Callmer. Last row: Jim Tagney, Don Lyon, Tom Davidson.



It seems that the third bass of Don Lyon's "Quartette" is being unavoidably detained by the provocative glances of the Hawaiian dolls, and who can blame him? Maybe it's their flashing smiles, or the flowers in their hair, or their magnetic personalities, but whatever it is, it seems to work! Hey, Mac! Remember, the show must go on, and "Mairzydoats" and Don wait for no man!

Dolls: Pat Cauty, Mary Ann Wenzel, Barbara Horton, Nancy Ohlson, and June Ohlson. Interested visitor: Sherrill MacDonald.



Dolls, dolls everywhere—in the Swiss Toy Shop, the setting of the 1944 Trojan Water Carnival. Costumes ranged from Hawaiian glamor girls to comfy-looking mummies, as witnessed in the picture. Cute scenery, cuter real-live dolls, and plenty of spectacular swimming combined to make this year's water carnival tops in entertainment.

First row, left to right: Nancy Ohlson, June Ohlson, Bernadette Creany. Second row, left to right: Virginia Waldin, Margaret Donovan, Margaret Wood. Seated: David Wilkinson, Betty Fortman. Standing on table: Jackie Perrin.



Finale to an enjoyable evening, with baby-doll Bernadette Creany doing the honors behind the sign. Dreamy expressions on the faces of the Hawaiian dolls indicate the general attitude of all, audience included, as Davy Wilkinson, the Swiss toymaker, closes up his shop on the 1944 carnival.

Front row, left to right: Mary Ann Wenzel, Barbara Horton, Nancy Ohlson, June Ohlson, Bernadette Creany behind sign. Standing, left to right: Virginia Waldin, Margaret Donovan, Margaret Wood, Davy Wilkinson. Standing on table: Jackie Perrin. Seated on table: Betty Fortman.



Thank You

Acknowledgements

For their valuable help and guidance, we wish to express our most grateful appreciation to Miss Doris Sayre, Miss Frieda Ellerbake, and Mr. C. W. Blanke.

To Miss Mildred Schaefer, and the G.A.A., Mr. Norman Kent, Miss Grace Harbert, the Activity Committee, and all the members of the faculty and student body who so willingly supported the Annual Fun Night, we give our heartiest thanks.

Further acknowledgment should go to Miss Adelaide Berry, Mr. Clement Meier, Miss Helen Johanns, Mr. J. C. Benette, Mr. John Wilkins, Nick Boznos, Lois Laugershausen, and Charles Bailey.

Engravings by Pontiac Engraving Company

Printing by Neely Printing Co.

Special Photography by Root Studio

Staff

Harriet M. Hart, Editor

FINANCIAL SECTION

Frances Dietsch
Frances Fuhr
Hildegard Jarosch
Beverly Kuhn
Nancy Perrin
Shirley Rohrer
Bernice Stoll
Lola Werhane

GENERAL SECTION

Barbara Mason
Mary Jean Brandt
Margaret Donavan
Dolores Johnson
Mary Louise Larson
Nancy Hall
Joan Rouse
Leota Harper
Joan Cutsler
Doris Hampton
Nona Holappa
Jack Price
Bob Ellis
Ed Podolinsky
Jean Kelley
Margaret McNeill
Jim Rasmussen

SENIOR SECTION

Jane Permer
Peggy McNeill
Pat Bennett
Helen Roberts
Rosemary Lutz
Anna Mae Schmidt
Eleanor Koch
Pat Lannert
Sally Porter
Dorothy Gustafson
Lois Heiniger
Lorraine Shade

To a good
fella. - Lots of
luck to you!
Sincerely .45

Here's to the girl on the Hill
She wants but her sister will
Here's to her sister.

Jack Wise

To my Algebra mate!!
Marty

To a great guy
Bob Cunningham

To a Super
Always
Adley

To a swell guy
Don Sturdevant
Key

To a swell guy
ant of his Pal
Could stay!
44

To you
Charmaine
Valkenear

D. Randall

To a swell fella
Ben

To a swell guy in
Biology
Always
Earl
Plata

lots of luck
Hank Miller

You fool
Maurice Jarrell

To a great friend
Best of luck
Kiah P. Amussen