

REFLECTIONS

'47

SKOKIE PUBLIC LIBRARY
REFERENCE BOOK

REMOVAL OF THIS BOOK FROM
THE LIBRARY CONSTITUTES A THEFT

✓ **For Reference**

Not to be taken from this room

Presented to

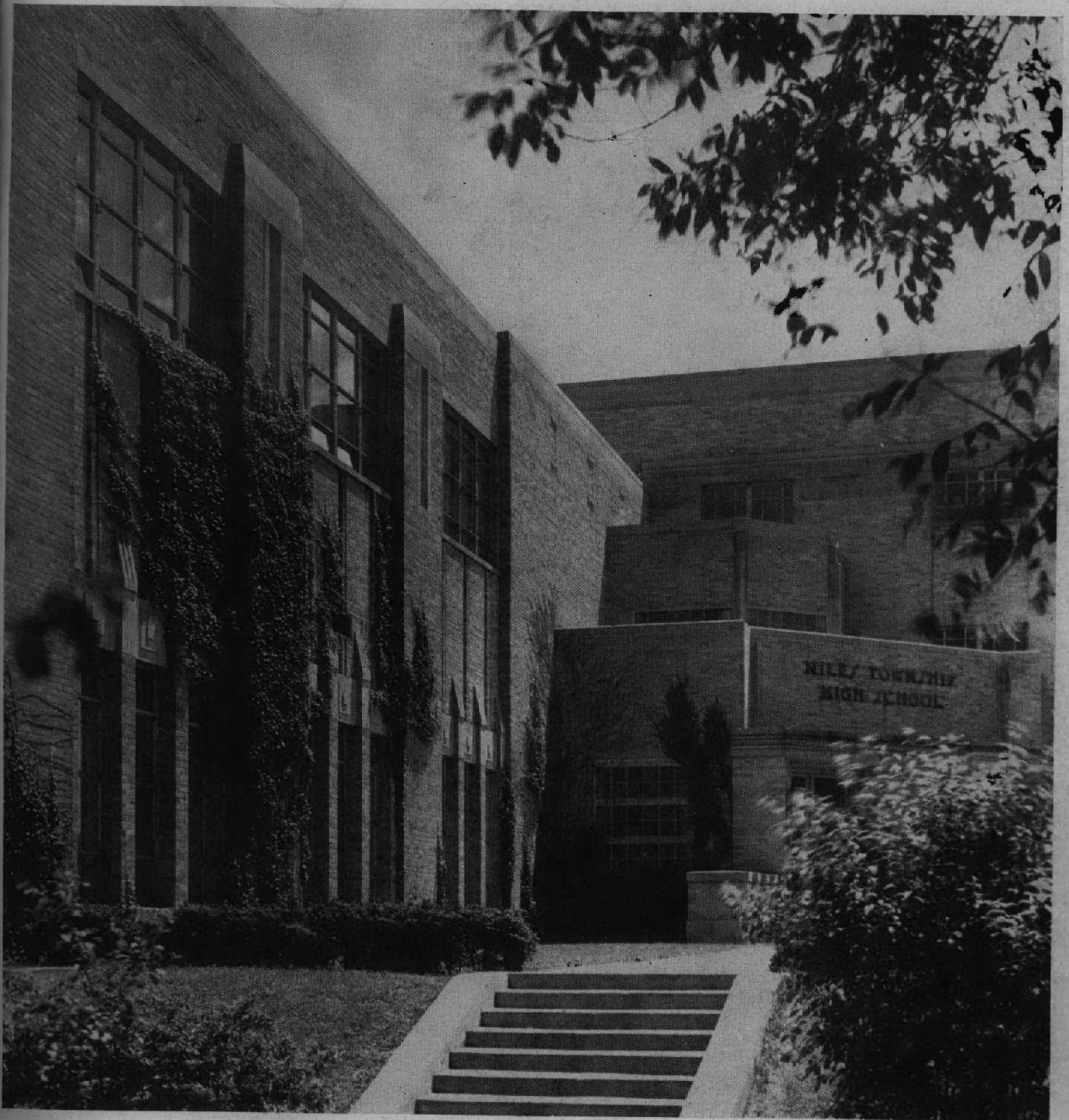
SKOKIE PUBLIC LIBRARY
SKOKIE

by the

**Niles Township
High School
Board of Education**

Eugene Ross - N.T.H.S. Printing Class

Damage noted p. 3-4
2-3-61
Jdc



Nilehi Reflections

NILES TOWNSHIP COMMUNITY HIGH SCHOOL

SKOKIE, ILLINOIS

SKOKIE PUBLIC LIBRARY



Graduating classes, like the seasons of the year, come and go. As surely as a new spring follows in the wake of winter, or a new summer steps into the spotlight of June, each commencement season at Nilehi finds a new class marching off stage into the wings of the future.

Although each new class, like each recurrent season, has many points in common with its predecessors, the specific details of its activity and achievement are always unique. The 1947 Reflections puts the spotlight on some of these details in the pages which follow. To you, the seniors of 1947 at Niles Township High School, we dedicate this book in the hope that it will help to preserve the memory of a year that was happy and helpful. May the years to come be happy and helpful and many.

The Staff

Nancy Hall	<i>Editor-in-chief</i>
Bonnie Webster	<i>Associate Editor</i>
Don Christensen	<i>Sports Editor</i>
Mary Helen Miller	<i>Photography Editor</i>
Marilyn Smith	<i>Copy Editor</i>
Florence Miethke	
Pat Olson	

From The Superintendent

It is with mixed emotion that we say farewell to each group of graduates; happy because of the individual achievement of so many; sad from the knowledge that graduation means the parting of the ways for pupils and teachers.

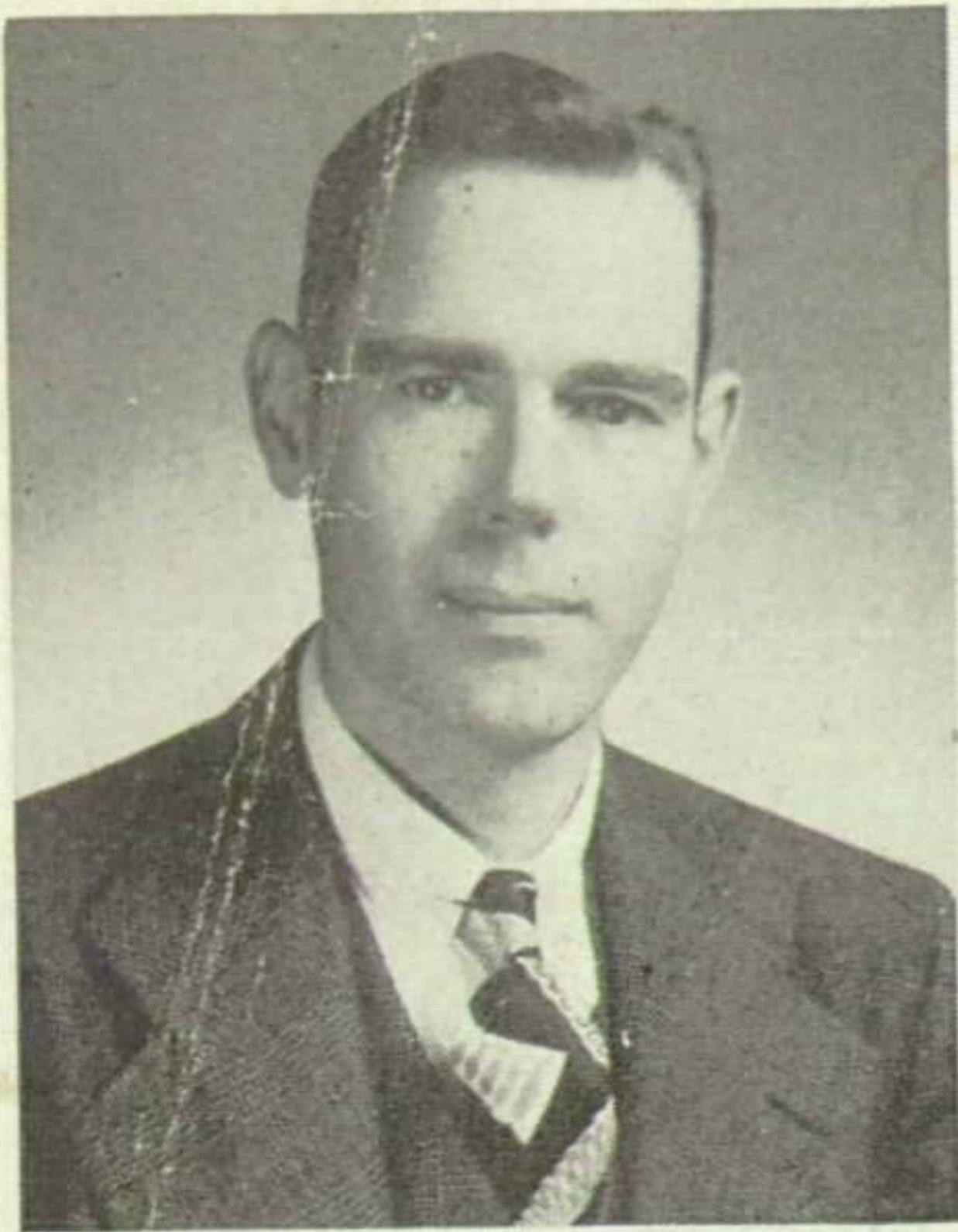
What Niles Township High School will mean to its alumni is largely dependent upon the contribution of the individuals while they are members of its student body. What Niles Township High School will mean to others will largely be determined by the achievements in the years to come, of those who pass through the experiences which lead to graduation. It is our hope that each passing year will, through the acts and achievements of its students and teachers, enrich the tradition and enhance the reputation of Niles Township High School, so that it may continue to be a source of pride and joy to our patrons and to all pupils whose privilege it is to be numbered among its alumni.

*A. L. Biehn, A.B., A.M., Ph.D.
Superintendent*



BOARD OF EDUCATION *Left to right: Miss Mildred E. Tess, Mr. Peter Kluesing, Mr. Ivan Paroubek (Pres.), Mr. Charles N. Miller, Mr. Mack D. Falknor.*

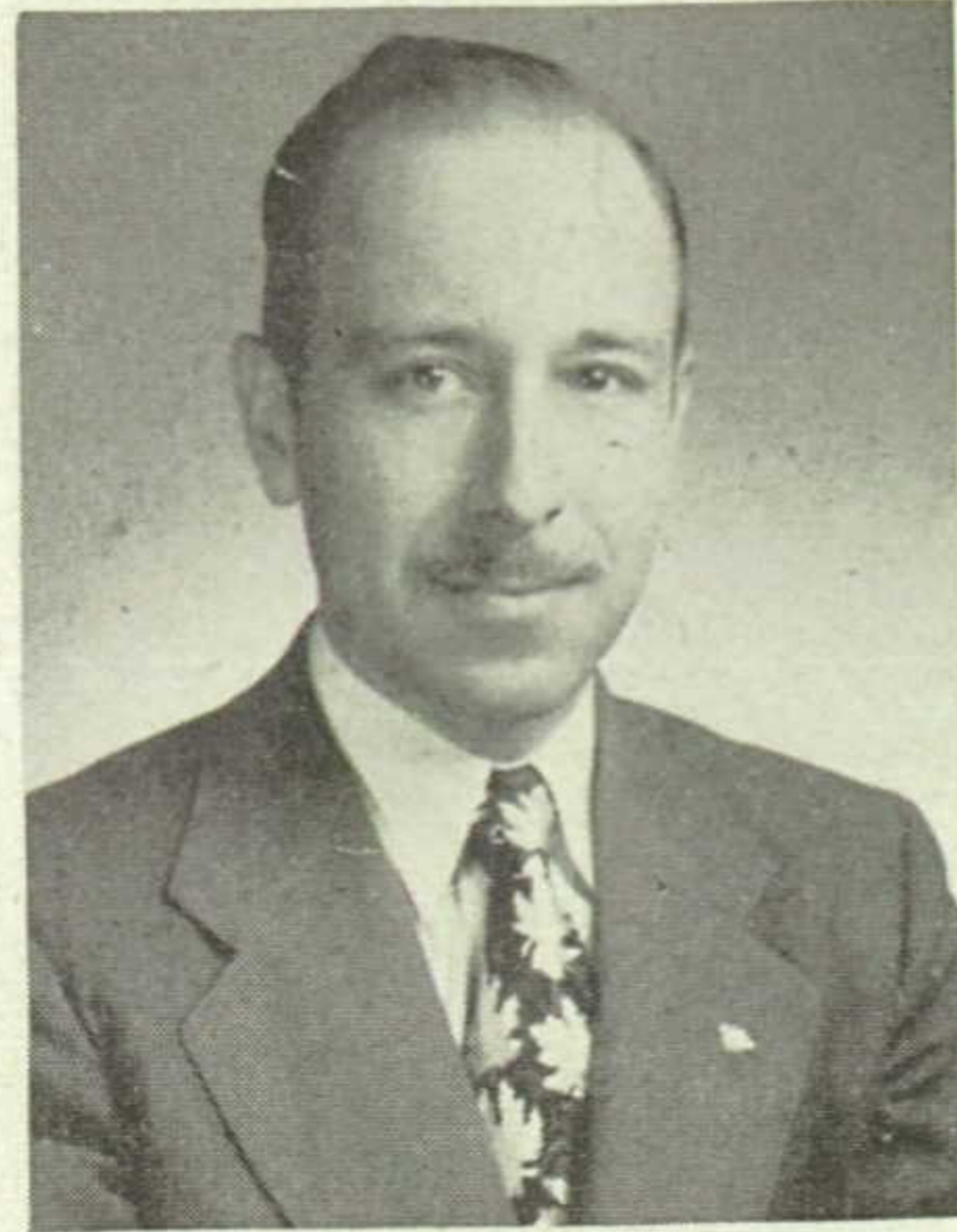
Faculty



George M. Adams
English, Spanish
Northwestern University, B.S.



Priscilla Baker
English, French
Rockford College, A.B.



John Leonard Betts
U. S. History, Problems
Northwestern University,
B.A., M.A.
University of Chicago, M.A.



Clifford Collins
Band, Orchestra
Conn National School of
Music, B. Mus.



Margaret de Booy
Mathematics,
Junior Adviser
Northwestern University, B.S.
Columbia University, M.A.



Paul M. Eberhardt
English, Journalism
University of Michigan, A.B.
Ohio State University, M.A.
Paul M. Eberhardt



Lester E. Galitz
Algebra, Physical
Education, Boys' Athletics
Bradley University, B.S.



Marie Green
Business Training,
Typewriting
Chairman of Com. Dept.
Northwestern University,
B.S., M.A.



Grace G. Harbert
Problems of Democracy
University of Illinois, B.S.
University of Minn., M.A.



Florence Harrison
General Science,
Chairman of Science Dept.
South Dakota St. College, B.S.
University of Wisconsin, Ph. M.



Dorothy Hinman Hind
Latin, Plane Geometry,
Visual Education
University of Chicago,
A.B., A.M.



Helen Hughes
Dramatics, Radio
Illinois Wesleyan University,
B.A.

1890 the star maid 11/11/11

Faculty



Charles W. Hussey
Biology
Illinois College, A.B.
University of Illinois, M.S.



Marvin H. Ihne
U. S. History, World
History, Occupations,
Sophomore Adviser
Illinois College, A.B.
University of Iowa, M.A.



Ada Immel
Shorthand, Bookkeeping,
Business Law
Lawrence College, A.B.
University of Iowa, M.A.



Harold Isaacson
Dir. of Boys' Phys. Ed.,
Boys' Athletics
*Western Michigan State
College, B.S.*



Helen M. Johanns
Typing, Bus. Machines
*Whitewater State Teachers'
College, B.E.*
Northwestern University, M.A.



Thomas J. Kiviluoma
Plane Geometry,
Advanced Algebra,
Chairman of Math. Dept.
*Northern Illinois State Teachers'
College, B.E.*
University of Illinois, M.A.



Clara A. Klaus
Vocal Music, Chairman of
Fine Arts Department
Northwestern University,
B.S., M.S.



Theresa E. Kranz
History, German,
Chairman of Social
Science Department
University of Minnesota,
B.A., M.A.



Alice Line
Home Economics
Stephens College, A.A.
University of Nebraska, B.S.



L. Robert Mackey
Electric Shop, Auto Shop,
Boys' Athletics
Lewis Institute, B.A., B.S.



Clement Meier
Printing
De Paul University, Ph. B.



James A. Michael
Geography,
World History
*Eastern Illinois State Teachers'
College, B. Ed.*
University of Illinois, M.A.

Faculty



Harold R. Ohlson
Chemistry, Mathematics,
Senior Adviser
*Northern Illinois State Teachers'
College, B.E.
University of Chicago, M.A.*



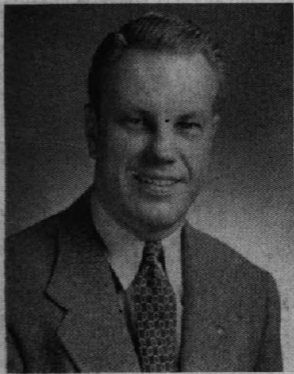
Grace Pendleton
English
*University of Illinois, A.B.
Northwestern University, M.A.*



Lucille Ronalds
English
*Mt. Holyoke College, B.A.
University of Illinois, M.A.*



Marjory Ronalds
Latin, Occupations for Girls,
Freshman Adviser
*Fassar College, A.B.
Columbia University, M.A.*



Arthur H. Ryden
World History, Civics,
Boys' Athletics
*De Pauw University, A.B.
Northwestern University, M.A.*



Mildred A. Shaefer
Director of Girls'
Physical Education
*Normal College of the American
Gymnastics Union, B.P.E.
De Paul University, M.A.*



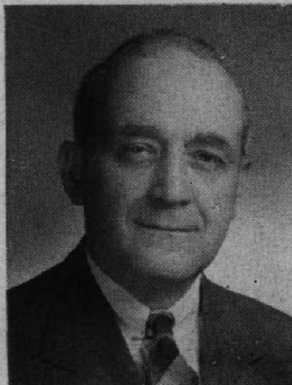
John W. Scheer
Physics, Algebra,
Photography
*Wisconsin State Teachers'
College, Oshkosh, B.S.*



Robbie Lou Schneider
Mathematics
*Wellesley College, B.A.
Northwestern University,
M.A., M.S.*



Anton T. Schubert
Physical Ed.,
Boys' Athletics
*American College of Physical
Education, B.P.E.
North Central College, B.S.
Northwestern University, M.A.*



Charles W. Selden
Woodshop, Chairman of
Industrial Arts Dept.
*University of Minnesota,
B.S., M.A.*



Earl Shanaberger
General Science
*Purdue University, B.S.
Northwestern University, M.A.*



Mrs. James A. Michael
Librarian
*Knox College, A.B.
University of Illinois,
B.S. in L.S.*

Faculty



Jean F. Small
Spanish
*Bryn Mawr College, B.A.
Northwestern U., M.A.
Universite de Touraine, Tours,
France; Diplome from La Sor-
bonne, Paris.*



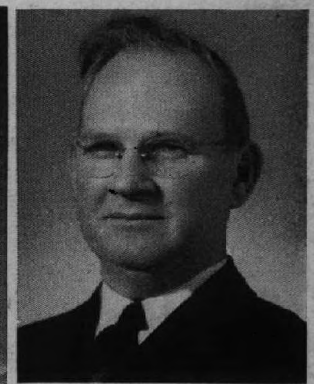
**Mary Evelyn
Thurman**
Physical Education,
Baton Twirling
Northeast Mo. College, B.S.



Doris Tillmann
English
*Illinois State Normal U., B.S.
Teachers College, Columbia U.,
M.A.*



Ronald A. VanArsdale
Dramatics, Radio, English
*Butler University, A.B.
University of Iowa, M.A.*



John G. Wilkins
Art, Mechanical Drawing
*Kansas State Teachers
College, B.S.
School of Art Institute, B.A.E.*



Agnes Harte
Office Manager



Pat Galitz
Bookkeeper



Helen Hart Kennan
R.N.
School Nurse



Dorothy Steward
Attendance Clerk



Lorraine Splett
Office Secretary



CUSTODIANS Left to right: Mr. Charles Brunke, Mr. Charles J. Ahrens, Mr. Charles J. Ide, Mr. Harry Boyd. Not pictured: Carrie Schoening, matron; Mr. Peier Kirscht, Mr. Herman Mueller.

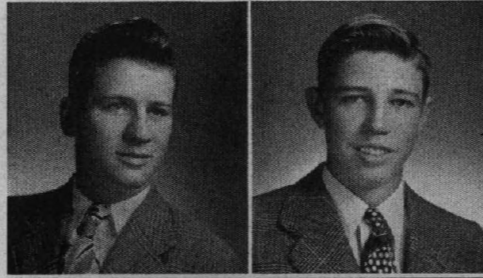


CAFETERIA STAFF Left to right: Mrs. Katie Kestenholz, Mrs. Julia Carlson, Mrs. Esther Fountaine, Mrs. Frances Garner, Mrs. Harriett Fiech, Mrs. Mary Kuehne, Mrs. Marian Koch, Mrs. Alice Suo.

S E N I O R S

Karl William Abbink

Transferred from New Trier 1. Boy's Glee Club 1,2,3. See Chicago Club 4. Baseball 1,2. Football 3. Basketball 1,2,3. Cheer Leader 4. Homeroom Vice-President 3.



Henry Ahrens

Life Saving 4. Tumbling 4.

Raymond Ahrens

Cafeteria 4. Basketball 1.



Dorothy C. Anderson

Freshman Choir 1. Bowling 4. Pep Club 4. Foreign Language Club 2,3. Home Nursing 4. Spring Concert 1. Tumbling 1. Ushers' Club 4.

Doris E. Bailey

Choir 2,3,4. Double Quartet 2,3,4. Senior Trio 4. Minor Music Award 2. Major Music Award 3. Freshman Choir 1. Spring Concert 1,2,3,4. See Chicago Club 4. Parents' Night 4. 8th Grade Night 2,3. Pep Club 4. G.A.A. 1,2,3,4. Reflections Revelry 4. Foreign Language Club 2,3. "Citizens of Tomorrow" 3,4.

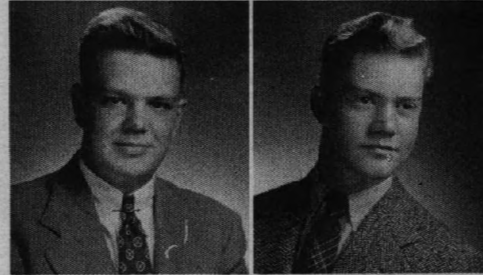


Dyer Bailey

Cafeteria 4.

Merryll Bailey

Band 1,2,3,4. Brass Sextet 3,4. Minor Music Award 3. Major Music Award 4. Freshman Choir 1. Spring Concert 2,3,4. Baseball 1. Football 3. Golf 4. Bowling 4. Foreign Language Club 2.



Dave Baker

Band 1. Swimming Team 4. Baseball 1,3,4.

Diane Baker

Freshman Choir 1. Cafeteria 4. See Chicago Club 4. Life Saving 4. Bowling 4. Synchronized Swimming 3. Water Carnival 3. Pep Club 4. G.A.A. 1,2,3,4. Home Nursing 4. Yearbook Staff 3. Library Staff 3.



Shirley Bartleson

Red Cross Council 1. Freshman Choir 1. Spring Concert 1. See Chicago Club 4. Life Saving 1,4. Synchronized Swimming 1. Water Carnival 1. G.A.A. 1,2,3,4. Home Nursing 4. Chemistry Club 4. Yearbook Staff 4. Junior Council 3. Senior Cabinet 4. Junior Classical League 2. Ushers' Club 1. Homeroom Treasurer 1,2. Bronze Pin 3. Silver Pin 4. Plays: "Double Exposure" 3.

Lois Adelle Barton

Girls' Glee Club 1,2,3. Freshman Choir 1. Spring Concert 1. See Chicago Club 4. Life Saving 4. Bowling 4. Pep Club 4. Home Nursing 4. Yearbook Staff 3. Foreign Language Club 2. Ushers' Club 3. Homeroom President 3. Christmas Vespers 1,2,3.



Patricia Baumhardt

Cafeteria 4. See Chicago Club 4. Parents' Night 1,2,3. Bowling 4. Tumbling 1. Water Carnival 2. Pep Club 4. G.A.A. 1,2. Home Nursing 4. Foreign Language Club 2,4. Nilehilite Staff 3. Plays: "ReHearsal" 2. "Double Exposure" 3. "Our Hearts Were Young and Gay" 4.

O F I 9 4 7

Shirley Baumhardt

Freshman Choir 1. See Chicago Club 4. Parents' Night 2. Junior Prom Committee 3. Pep Club 4. G.A.A. 1,2,3,4. Play Day 2. Home Nursing 4. Chemistry Club 4. Junior Council 3. Junior Classical League 2. German Club 3,4. Forum 2. Silver Pin 3. Bronze Pin 2.



Oliver Berens

See Chicago Club 4. Football 1,2,3,4. Senior Cabinet 4. Forum 1. National Honor Society 4. Homeroom President 3.

Ruth Berkow

Style Show 4. Freshman Choir 1. Spring Concert 1. Cafeteria 4. See Chicago Club 4. Basketball 4. Life Saving 4. Tumbling 1,2. Pep Club 4. G.A.A. 1,2,3,4. Home Nursing 4. Foreign Language Club 4.



Betty Belle Bernardi

Transferred from Evanston Twp. H.S. 2. Cafeteria 4. Basketball 2. G.A.A. 2,3.

Robert Bierbaum

Cafeteria 4. Baseball 1,2,3,4. National Honor Society 3,4. Gold Pin 4. Silver Pin 3. Bronze Pin 2.

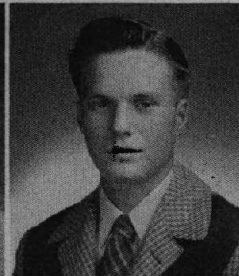


Dona Pauline Bishop

Style Show 3,4. Orchestra 1,2. Freshman Choir 1. Spring Concert 1. Cafeteria 4. Life Saving 4. Synchronized Swimming 4. Water Carnival 4. Pep Club 4. G.A.A. 1,2,3,4. Health Council 3. Home Nursing 4. Chemistry Club 4. German Club 3,4. National Honor Society 3,4. Homeroom Treasurer 1,2,3. Silver Pin 4. Bronze Pin 3.

Robert W. Blessing

Freshman Choir 1. Spring Concert 1. Cafeteria 4. Parents' Night 2. Football 1. Swimming Team 2,3,4. Life Saving 3. Synchronized Swimming 3,4. Water Carnival 4. Pep Club 4. Foreign Language Club 3,4. Photography Club 2. Most Valuable Swimmer 4. See Chicago Club 4.



Henry Bobowski

Cafeteria 4. See Chicago Club 4. Basketball 1,2. Golf 3,4. Bowling 4. Chemistry Club 4. Homeroom Vice-President 3.

Robert Boehning

Orchestra 1,2,3. Band 1,2,3. Minor Music Award 3. Spring Concert 1,2,3. Football 1,2,3,4. Basketball 1,2,3. Foreign Language Club 3. Bronze Pin 3.



Joan Boemmel

Style Show 3,4. Spring Concert 1. Cafeteria 4. See Chicago Club 4. Pep Club 4. G.A.A. 1,2,3,4. Home Nursing 4. Yearbook Staff 3. Photography Club 3. Homeroom Secretary 3.

Lorraine Bogner

Style Show 3,4. Freshman Choir 1. Cafeteria 4. See Chicago Club 4. G.A.A. 1,2,3,4.



Nancy Bogue

Transferred from Evanston Twp. H.S. 4. Cafeteria 4.

Ray Boldt

Cafeteria 4. Track 3,4. Minor Art Award 3.

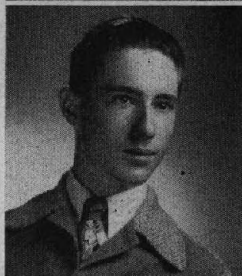


Eleanor Bomark

Transferred from Sullivan H.S. 3. See Chicago Club 4. Parents' Night 4. Life Saving 4. Bowling 4. Pep Club 4. Home Nursing 4. German Club 4.

Philip Bornarth

Cafeteria 4. See Chicago Club 4. Minor Art Award 3. Water Carnival 1.

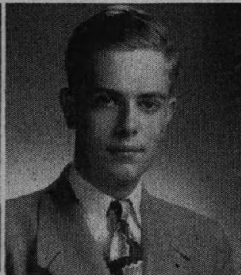


Lois Mary Bornemeier

Freshman Choir 1. See Chicago Club 4. Life Saving 4. Synchronized Swimming 1,2,3,4. Water Carnival 1,2,3,4. Leaders 2,3,4. Cafeteria 4. Parents' Night 2,3,4. Equestrian Club 3,4. 8th Grade Night 1,2,3,4. Pep Club 4. G.A.A. 1,2,3,4. Home Nursing 4. German Club 3,4. National Honor Society 3,4.

Mary Jean Brandt

Girls' Glee Club 4. Spring Concert 1,4. Cafeteria 4. See Chicago Club 4. Parents' Night 4. Pep Club 4. G.A.A. 1,2,3,4. Yearbook Staff 1,2. Foreign Language Club 2,3. Ushers' Club 4.

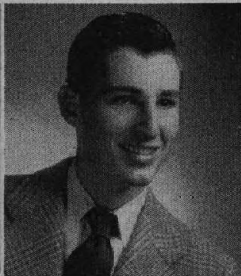


Walter Braun

Transferred from Austin H.S. 3. Orchestra 3,4. Minor Music Award 3. Spring Concert 3,4. Cafeteria 4. See Chicago Club 4. Life Saving 4. Pep Club 3,4. Chemistry Club 4. Foreign Language Club 3. Major Music Award 4.

Audrea Bredberg

Transferred from Wayland Academy 3. Cafeteria 4. See Chicago Club 4. Life Saving 4. Bowling 4. Synchronized Swimming 4. Water Carnival 4. Pep Club 4. Twirling 4. G.A.A. 4. Drill Group 4. Reflections Revelry 4. Foreign Language Club 3.

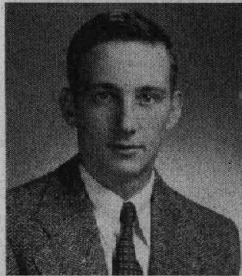


Philip Brice

Transferred from Austin H.S. 2. Cafeteria 3,4. See Chicago Club 4. Parents' Night 4. Football 3,4. Track 2,3,4. Bowling 4. Reflections Revelry 3,4. Nilehilite Production Manager 4.

Tom Brophy

Transferred from St. George 3. Cafeteria 4. Football 3,4. Tumbling 3,4. Baseball 3,4.



Nancy Burge

Orchestra 1,2,3,4. Spring Concert 1,2,3,4. See Chicago Club 4. Parents' Night 2,3,4. Life Saving 4. Water Carnival 2. G.A.A. 1,2,3,4. Health Council 3. Home Nursing 4. Sophomore Senate 2. Ushers' Club 3. Homeroom President 2. 8th Grade Night 2,3.

Earle Carlson



Marian Carlson

Style Show 3,4. Spring Concert 1,2. See Chicago Club 4. Home Nursing 4. Library Staff 2,3. Nilehilite Staff 4. Play: "Message from Bataan" 2.

Raymond Carlson

Spring Concert 1. Cafeteria 4. See Chicago Club 4. Football 1,4. Track 2. Homeroom Treasurer 1.

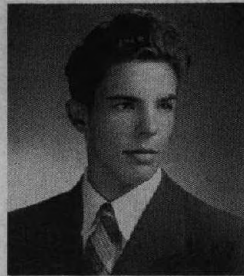


Edward Chadwick

Transferred from Amundsen H.S. *4.

Fred Champlin

Transferred from New Trier H.S. 2. Cafeteria 4.



Shirley May Clarkens

Style Show 2,3. Cafeteria 4. Home Nursing 4. 100 Per Cent Club 3.

Mary Alice Clynes

Transferred from Hastings H.S. 3. Life Saving 2,4. Equestrian Club 3,4. G.A.A. 2,3. Health Council 4. Dramatics Night 2,3. Bowling 4. Pep Club 4. Play Day 2. Foreign Language Club 2,4.

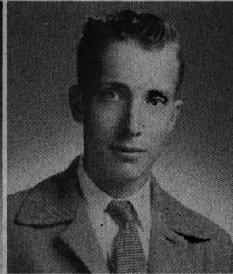
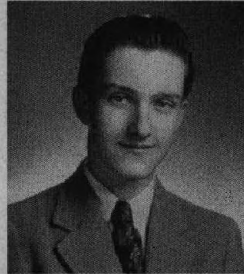


Helen Conrad

Style Show 2. Freshman Choir 1. Bowling 4. Water Carnival 2. Pep Club 4. G.A.A. 1. G.A.A. Camp 1. Home Nursing 4. Reflections Revelry 3,4. Library Staff 3. Junior Council 3. Senior Cabinet 4. 100 Per Cent Club 4.

Robert Conway

Freshman Choir 1. Spring Concert 1. Cafeteria 4. See Chicago Club 4. Parents' Night 3. Foreign Language Club 1,2. Ushers' Club 3. Operators' Club 4. Color Guard 1,2. Homeroom Treasurer 2,3.

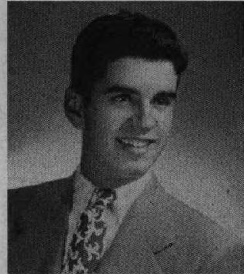


Jack A. Cysewski

Transferred from St. Norbert H.S. 3. Band 3. Football 4. Track 4.

Jerry C. Dahm

Cafeteria 4. Football 1,3,4. Swimming Team 2,3,4. Bowling 4. Water Carnival 1. Nilehilite Production Manager 2,3.



Dorothy Davis

Style Show 4. Freshman Choir 1. See Chicago Club 4. Life Saving 1,4. Bowling 4. Equestrian Club 3. Synchronized Swimming 3,4. Water Carnival 3,4. Twirling 2. Leaders 4. Pep Club 4. G.A.A. 1,2,3,4. Home Nursing 4. Chemistry Club 4. Yearbook Staff 3. Foreign Language Club 3,4. Ushers' Club 1.

Beatrice Delles

Christmas Vespers 2,3. Choir 3. Girls' Glee Club 2. Minor Music Award 3. Freshman Choir 1. Spring Concert 1,2,3. See Chicago Club 4. 8th Grade Night 1. Track 3. Life Saving 4. Synchronized Swimming 2,3,4. Water Carnival 3,4. Pep Club 4. G.A.A. 1,2,3,4. Home Nursing 4. Chemistry Club 4. Plays: "Our Hearts Were Young and Gay" 4.



Lois Joy Deutsch

Freshman Choir 1. Spring Concert 1. Cafeteria 4. See Chicago Club 4. Pep Club 4. G.A.A. 1,2,3,4. Home Nursing 4. Library Staff 3. Foreign Language Club 3,4.

Robert Dombrowski

Choir 2. Boys' Glee Club 2. Freshman Choir 1. Cafeteria 4. See Chicago Club 4. Sophomore Senate 2. Junior Council 3.



Margaret Donovan

Choir 4. Girls' Glee Club 1,2,3. Double Quartet 4. Minor Music Award 3. Major Music Award 4. Freshman Choir 1. Spring Concert 1,2,3,4. Cafeteria 4. See Chicago Club 4. Parents' Night 4. Synchronized Swimming 2,3,4. Water Carnival 2,3. Pep Club 4. G.A.A. 1,2,3,4. Reflections Revelry 3,4. Yearbook Staff 1. Gold Pin 4. Silver Pin 3. Bronze Pin 2.

Pat Donavon

See Chicago Club 4. Yearbook Staff 3.



Nancy DuMont

Style Show 4. Freshman Choir 1. Spring Concert 1. Cafeteria 4. See Chicago Club 4. Parents' Night 4. Pep Club 4. G.A.A. 1,2,3,4. Home Nursing 4. Library Staff 3. Foreign Language Club 3.

Noelle Elkins

Freshman Choir 1. Cafeteria 4. See Chicago Club 4. Pep Club 4. G.A.A. 1,2. Library Staff 3. Photography Club 4. Nilehilite Staff 4.

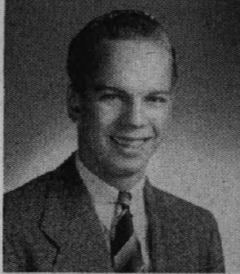


Ethel Engel

Transferred from Kelyvn Park H. S. 2. Spring Concert 2. Girls' Glee Club 2.

Robert Farr

Freshman Choir 1. See Chicago Club 4. Football 1,2,3,4. Junior Prom Committee 3. Pep Club 4. Chemistry Club 4. Sophomore Senate 2. Senior Cabinet 4. Foreign Language Club 1,2. Forum 3. National Honor Society 3,4. Operators' Club 3,4. Homeroom President 1. Silver Pin 4. Bronze Pin 3. "Citizens of Tomorrow" 4.



Richard Fisher

Cafeteria 4. See Chicago Club 4. Parents' Night 1. Football 1,2,3,4. Basketball 1,2,3,4. Tumbling 4. Pep Club 4. Sophomore Senate 2. Forum 2. Photography Club 2. Homeroom President 3.

Betty Fortman

Style Show 2. See Chicago Club 4. Parents' Night 3. Life Saving 4. Bowling 4. Water Carnival 1. G.A.A. 1,2. G.A.A. Camp 1. Home Nursing 4. Nilehilite Staff 3,4. Homeroom Vice-President 3. Bronze Pin 4. Plays: "Rehearsal" 2. "Our Hearts Were Young and Gay" 4. Junior Prom Committee 3.

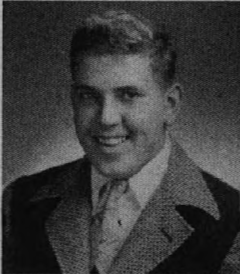


Petrea D. Freeding

Transferred from North Park Academy 3. Cafeteria 4. See Chicago Club 4. Synchronized Swimming 3,4. Water Carnival 3,4. Pep Club 4. Home Nursing 4. Foreign Language Club 3,4.

Richard F. Fuhr

Freshman Choir 1. Spring Concert 1. Bowling 4. Homeroom President 1,3. 8th Grade Night 1. Foreign Language Club 3,4. Parents' Night 2. Water Carnival 1,2. Homeroom Vice-President 3.



Joyce Theresa Gawrys

Band 3,4. Freshman Choir 1. Spring Concert 1. See Chicago Club 4. Bowling 4. Water Carnival 1. Twirling 1,2,3,4. Pep Club 4. G.A.A. 1,2. Home Nursing 4. Yearbook Staff 3. Foreign Language Club 2. 100 Per Cent Club 4. Photography Club 2.

Dorothy Goers

Red Cross Council 2. Freshman Choir 1. Spring Concert 1. See Chicago Club 4. 8th Grade Night 2. Life Saving 1,2,4. Equestrian Club 3,4. Synchronized Swimming 3. Water Carnival 3. Bowling 4. Leaders 4. Pep Club 4. G.A.A. 1,2,3,4. Play Day 2. Home Nursing 4. Chemistry Club 4. Yearbook Staff 3,4. Junior Classical League 2,3. Photography Club 2. Girls' Track 3.



Richard Graf

Style Show 3. Freshman Choir 1. Spring Concert 1. Cafeteria 4. See Chicago Club 4. Parents' Night 1,3,4. Football 1,2. Track 1,2,3,4. Swimming Team 1,2. Bowling 4. Synchronized Swimming 1,2. Water Carnival 1. Dramatics Night 2,3,4. P.A. Announcer 3. Plays: "Red Carnation" 2. "Ever Since Eve" 3. "Coo Coo Cottage" 3. "Our Hearts Were Young and Gay" 4. "Smilin' Thru" 4.

Gloria Green

Transferred from Senn H.S. 2. Cafeteria 4. Home Nursing 4.



Joanne Gubbins

Style Show 3. Choir 2,3,4. Double Quartet 4. Minor Music Award 3. Major Music Award 4. Freshman Choir 1. Spring Concert 1,2,3,4. Cafeteria 4. See Chicago Club 4. Bowling 4. Spanish Club 3,4. Junior Classical League 1,2. G.A.A. 1,2,3,4. Yearbook Staff 4. Reflections Revelry 2. Chemistry Club 4. National Honor Society 3,4. Silver Pin 4. Bronze Pin 3. Pep Club 4. Parents' Night 1,4. 8th Grade Night 1.

Marilyn Gustafson

Choir 3,4. Orchestra 1,2,3,4. Band 1,2,3,4. Minor Music Award 2,3. Freshman Choir 1. Spring Concert 1,2,3. Parents' Night 1,4. Water Carnival 1. Twirling 3,4. Leaders 4. G.A.A. 1,2,4. Drill Group 4. Foreign Language Club 3,4. Homeroom Secretary 1,2,3,4.



Caroline Glyden

Transferred from Senn H.S. 3. Girls' Glee Club 3. Spring Concert 3. Cafeteria 4. See Chicago Club 4. Track 3. Life Saving 4. Bowling 4. Synchronized swimming 3,4. Water Carnival 3,4. Pep Club 4. Cheer Leader 3. Leaders' 3,4. G.A.A. 3,4. Home Nursing 4. Reflections Revelry 3. Nilehilite Staff 4.

Nancy Hall

Red Cross Council 2,3. Freshman Choir 1. Spring Concert 1. Cafeteria 4. See Chicago Club 4. Parents' Night 3. Water Carnival 2,3,4. G.A.A. 1,2,3,4. Home Nursing 4. Reflections Revelry 2,3,4. Yearbook Staff 1,2,3,4. Editor 4. Pep Club 4. Junior Prom Committee 3. Minor Art Award 3. Major Art Award 4.



Lucy Hamada

Transferred from Marengo Community H. S. 1. Cafeteria 4. See Chicago Club 4. Basketball 3. Track 3. Life Saving 4. Tumbling 3. Twirling 2,3,4. Pep Club 4. G.A.A. 3,4. Drill Group 4. Home Nursing 4. Reflections Revelry 2. 100 Per Cent Club 3,4.

Joseph Hanegan

Cafeteria 4. See Chicago Club 4.



Patricia Ann Hanegan

Girls' Glee Club 2. Spring Concert 1,2. See Chicago Club 4. G.A.A. 1,2,3,4. Nilehilite 4. Freshman Choir 1. Cafeteria 4. Pep Club 4. Ushers' Club 4.

Carolyn Harnden

Freshman Choir 1. Parents' Night 2,3. Synchronized Swimming 1,4. Cheer Leaders' 2,3. Pep Club 4. G.A.A. Board 1,2,3,4. See Chicago Club 4. Life Saving 4. Water Carnival 4. Leaders 2,3. Play Day 1,2,3. Home Nursing 4. Chemistry Club 4. Forum 2. Foreign Language Club 4. Homeroom Treasurer 1,2. Bronze Pin 4.

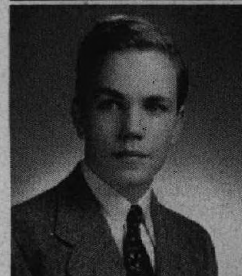


Marjorie Ann Harrer

See Chicago Club 4. Life Saving 4. Equestrian Club 3. G.A.A. 1,2,3,4. Play Day 3. Foreign Language Club 3. Forum 3. Homeroom President 2. Homeroom Secretary 1. Bronze Pin 3.

Paul Hattendorf

Cafeteria, 4.

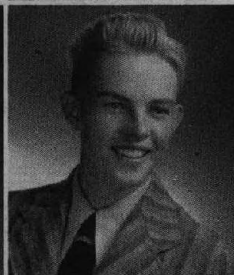


Janet Hayes

Style Show 4. Choir 3. Girls' Glee Club 2. Minor Music Award 3. See Chicago Club 4. Water Carnival 4. G.A.A. 1,2,3,4. Home Nursing 4. Reflections Revelry 4. Nilehilite Staff 4. Dramatics Night 2. Declamation Contest 2. Minor Dramatics Award 3. Major Dramatics Award 4. Plays: "Our Hearts Were Young and Gay" 4. Freshman Choir 1. Spring Concert 1. Foreign Language Club 3,4.

Gene Hegarty

Baseball 1,2,3,4. Football 1,2,3,4. Golf 2,3,4. Swimming Team 1,2,3,4. Synchronized Swimming 1,2. Water Carnival 1,2. Foreign Language Club 3,4. Homeroom Vice-President 2.



Allen Heim

Cafeteria 4. Minor Art Award 3. Swimming Team 1,2,3,4. Baseball 1,3,4. German Club 3,4. Photography Club 2. Bronze Pin 3.

Robert Heinz

Freshman Choir 1. Spring Concert 1. Synchronized Swimming 1,2. Water Carnival 1,2. Junior Classical League 2,4. Bronze Pin 3.



Marilyn Herkert

Style Show 3,4. Band 1. Spring Concert 1. Cafeteria 4. See Chicago Club 4. Parents' Night 4. Track 3. Bowling 4. Tumbling 1. Leaders 2. Pep Club 4. G.A.A. 1,2,3,4. Play Day 2. Health Council 4. Home Nursing 4. Yearbook Staff 2. Library Staff 3. Foreign Language Club 2.

Dorothy Hill

Red Cross Council 1. Style Show 1. Cafeteria 4. G.A.A. 2. Home Nursing 4. Foreign Language Club 1.



Rita Hillinger

Transferred from New Trier 3. Cafeteria 4. See Chicago Club 4. Parents' Night 4. Basketball 3,4. Track 3. Life Saving 4. Synchronized Swimming 3,4. Water Carnival 3,4. Leaders' 4. G.A.A. 3,4. Home Nursing 4.

George Hoffmann

Spring Concert 1. Cafeteria 4. Parents' Night 4. Water Carnival 3. Nilehilite Production Manager 3,4.

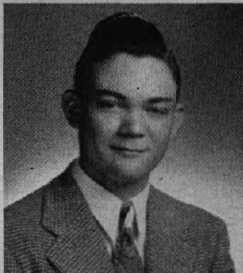


Howard Hoffman

Freshman Choir 1. Spring Concert 1. Cafeteria 4. Bowling 4. Pep Club 4. Nilehilite Production Manager 3. Homeroom Vice-President 4.

John P. Hoffmann

Spring Concert 1. Cafeteria 4. Parents' Night 4. Tumbling 4. Nilehilite Production Manager 3,4.

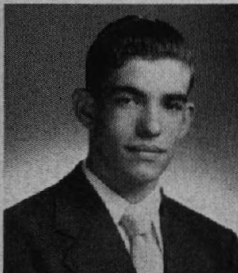


Carol Anne Holmberg

Style Show 2. Freshman Choir 1. Spring Concert 2. Cafeteria 4. Bowling 4. Water Carnival 1. Pep Club 4. Home Nursing 4. Reflections Revelry 3. Yearbook Staff 3. Library Staff 3. Ushers' Club 3. 100 Per Cent Club 3,4. Homeroom Secretary 4.

Patricia Horner

Transferred from Senn H.S. 2. Style Show 4. See Chicago Club 4. Twirling 2. Pep Club 4. G.A.A. 2,3,4. Home Nursing 4. Yearbook Staff 3,4. Foreign Language Club 2,4. Nilehilite Staff 4. Homeroom Vice-President 2.

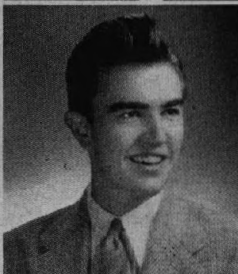


Philip Horton

Cafeteria 4. See Chicago Club 4. Football 1,2,3,4. Foreign Language Club 2. Track 2,3,4.

Ruth Elaine Howard

Style Show 4. Cafeteria 4. See Chicago Club 4. Pep Club 4. G.A.A. 1,3,4. Health Council 3. Library Staff 2,3. Foreign Language Club 2.



Eugene Huber

Freshman Choir 1. Spring Concert 1. Parents' Night 1,2.

Josephine Huber

Girls' Glee Club 4. Spring Concert 4. Cafeteria 4. See Chicago Club 4. Parents' Night 4. Bowling 4. G.A.A. 1,2. Dramatics Night 3. War Activities 3.



Phyllis M. Humphrey

Style Show 4. Freshman Choir 1. Cafeteria 4. See Chicago Club 4. Parents' Night 2. Bowling 4. Water Carnival 1,2. Pep Club 4. G.A.A. Camp 1. G.A.A. 1,2,3,4. P.A. Announcer 3. Play Day 2. Home Nursing 4. Foreign Language Club 2,3. Nilehilite Staff 3. Homeroom Treasurer 1.

Margaret Hunt

Style Show 4. Cafeteria 4. See Chicago Club 4. Twirling 2. Pep Club 4. G.A.A. 1,2,3,4. Home Nursing 4. Foreign Language Club 2,3.



Rae Ihrcke

Red Cross Council 2. Style Show 4. Freshman Choir 1. Spring Concert 1. Cafeteria 4. See Chicago Club 4. Parents' Night 2,3. Life Saving 1,2,4. Pep Club 4. G.A.A. 1,2,3,4. Health Council 3. Home Nursing 4. Chemistry Club 4. Yearbook Staff 4. Junior Classical League 2,3. Homeroom Secretary 1,2,3,4.

Betty Ann Jerger

Transferred from Waller H.S. 4. Cafeteria 4. See Chicago Club 4. Parents' Night 4. Bowling 4. Pep Club 4. German Club 4. National Honor Society 4. Gold Pin 4.



Arlene Kaehler

Transferred from Evanston Twp. H.S. 2. Style Show 4. Choir 2,3. Minor Music Award 3. Spring Concert 2,3. Cafeteria 4. See Chicago Club 4. Parents' Night 4. Life Saving 4. Bowling 4. Synchronized Swimming 4. Water Carnival 4. Cheer Leader 3. Leaders 4. Pep Club 4. G.A.A. 3,4. Home Nursing 4. Reflections Revelry 4. Homeroom President 4. Homeroom Vice-President 3. Foreign Language Club 2.

Walter Karnatz

Freshman Choir 1. Spring Concert 1. Cafeteria 4. Basketball 3,4. Pep Club 4. Nilehilita Production Manager 3.

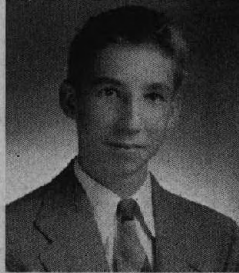


Viola G. Karsten

Style Show 2. Freshman Choir 1. Spring Concert 1. 100 Per Cent Club 3,4.

James Katzel

Freshman Choir 1. Spring Concert 1. Cafeteria 4. See Chicago Club 4. Parents' Night 1. Football 1,2,4. Reflections Revelry 1. Homeroom President 2.

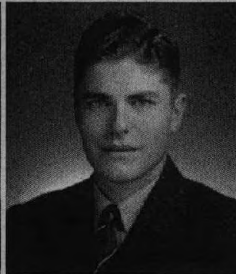


Betty Kellen

Style Show 2,3. Choir 4. Girls' Glee Club 2,3. Minor Music Award 3. Major Music Award 4. Cafeteria 4. See Chicago Club 4. Water Carnival 1. G.A.A. 2,3. Home Nursing 4. Reflections Revelry 3.

Robert Kelly

Transferred from Taft H.S. 4.

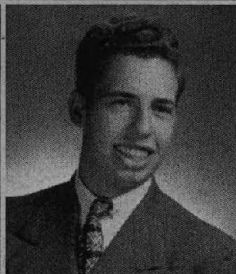


Robert Kepen

Football 3. Bowling 4. Pep Club 4. Foreign Language Club 1,2. Operators' Club 2,3,4. Photography Club 2. Nilehilita Staff 3. Dramatics Night 3. Plays: "Ever Since Eve" 3.

Jean Kerbel

Transferred from Palatine H.S. 3. Home Nursing 4.

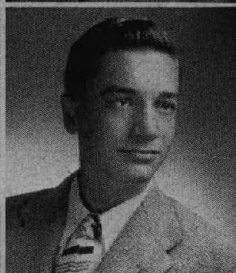


Louis Kettel

Cafeteria 4. See Chicago Club 4. Hearst History contest 4. Parents' Night 4. Football 4. Swimming Team 1,2,3,4. Water Carnival 1,2,3,4. Pep Club 4. Foreign Language Club 3,4. Senior Cabinet 4. National Honor Society 3,4. Harvard Award 3. Gold Pin 4. Silver Pin 3. Bronze Pin 2. "Citizens of Tomorrow" 4.

Grace Klehm

Girls' Glee Club 3,4. Orchestra 1,2,3,4. Band 1,2,3,4. Flute Quartet 1. Minor Music Award 2. Major Music Award 3,4. Freshman Choir 1. Spring Concert 1,2,3,4. Cafeteria 4. See Chicago Club 4. Parents' Night 4. 8th Grade Night 1. Twirling 4. Leaders' 4. G.A.A. 1,2,3,4. Drill Group 4. Sophomore Senate 2. National Honor Society 3,4. Silver Pin 4. Bronze Pin 3.



Herbert Knapp

Transferred from Rosells H.S. 2. Cafeteria 4. Baseball 3. Cheer Leader 4. Reflections Revelry 2,4. Yearbook Staff 3. Junior Classical League 2. Nilehilita Staff 4. Dramatics Night 3. Plays: "Double Trouble" 3.

Nadine Kodani

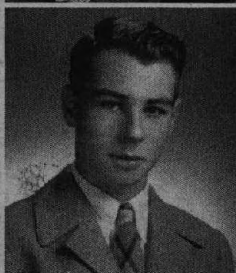
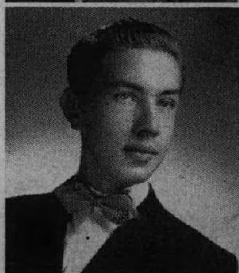
Transferred from Manzanar H.S. 3. Home Nursing 4. Foreign Language Club 3,4. Bronze Pin 4.



Marian M. Kohl

Spring Concert 1. See Chicago Club 4. Basketball 3. G.A.A. 3,4. Home Nursing 4. Yearbook Staff 3. 100 Per Cent Club 3.

Matthew Kolakowski



Howard Korsmo

Freshman Choir 1. Spring Concert 1. Football 1. Pep Club 4. Cafeteria 4. Bowling 4. Homeroom Secretary 4.

Bernice Kozak

G.A.A. 2,3,4. 100 Per Cent Club 4. Bronze Pin 3.



Carol Krause

Style Show 4. See Chicago Club 4. Parents' Night 2,3. Cheer Leader 2,3,4. Pep Club 4. G.A.A. 1,2,3,4. Home Nursing 4. Senior Cabinet 4. Foreign Language Club 3. Nilehilite Staff 4. Homeroom Secretary 2. Dramatics Night 3. "Citizens of Tomorrow" 4. Plays: "Rehearsal" 2. "The Drugstore" 3. Junior Prom Committee 3. War Activities 3.

Joan Kreegier

Cafeteria 4. Home Nursing 4. Nilehilite Staff 3.



John Kretschmar

Baseball 3. Football 4. Basketball 4. Track 2,4.

Mary A. Krier

Cafeteria 4. Style Show 2,4. See Chicago Club 4. Life Saving 4. Bowling 4. Home Nursing 4. Library Staff 1.



Dorothy Kruschka

Style Show 2. Freshman Choir 1. 100 Per Cent Club 3.

Julius Krueger

Transferred from Leyden H.S. 3.

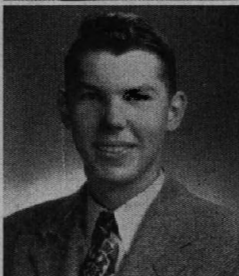
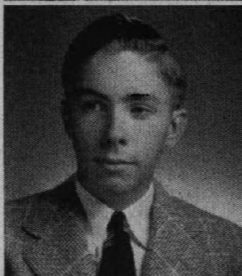


Ronald Krueger

Life Saving 1,2,3. German Club 3,4. Photography Club 2.

Donald Kunkel

Freshman Choir 1. Spring Concert 1. Baseball 1,3,4. Basketball 1,3,4. Freshman Board of Advisers 1. Sophomore Senate 2. Homeroom Vice-President 3.



Harold Larson

Cafeteria 4. See Chicago Club 4. 8th Grade Night 1. Operators' Club 2,3,4. Homeroom President 2. P.A. Announcer 4. Plays: "Ever Since Eve" 3. "One Heart, \$4.50" 3. "Our Hearts Were Young and Gay" 4.

Janet Larson

See Chicago Club 4. Bowling 4. Pep Club 4. G.A.A. 1,2,3. Health Council 4. Yearbook Staff 4. Junior Classical League 2,3. Homeroom Secretary 1. Chemistry Club 4. Dramatics Night 2. Plays: "Double Exposure" 3. Silver Pin 4. Bronze Pin 3.



Linda Larson

Red Cross Council 2. See Chicago Club 4. Life Saving 4. G.A.A. 1,2,4. Play Day 2. Health Council 4. Chemistry Club 4. Yearbook Staff 1,4. Senior Cabinet 4. Foreign Language Club 1,2. Homeroom Secretary 3. National Honor Society 3,4. Gold Pin 4. Silver Pin 3. Bronze Pin 2. "Citizens of Tomorrow" 4.

Uno Larson

Cafeteria 4. Parents' Night 1. Basketball 1. Tumbling 4. Baseball 1,2,3,4. Cheer Leader 4. Reflections Revelry 4. Freshman Board of Advisers 1. Photography Club 2. Bowling 4. Homeroom Secretary 2.

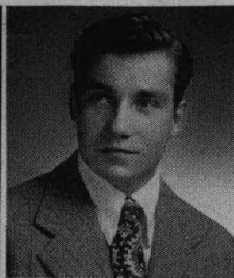


Dolores Lauth

Freshman Choir 1. Spring Concert 1. Cafeteria 4. Life Saving 4. Bowling 4. Cheer Leader 1,2,3,4. Pep Club 4. G.A.A. 1,2,3,4. Home Nursing 4. Reflections Revelry 4. Chemistry Club 4. Yearbook Staff 3. Junior Council 3. Foreign Language Club 3,4. Nilehilite Staff 3. Dramatics Night 3. "Citizens of Tomorrow" 4.

Jean Marilyn Leach

Style Show 4. Cafeteria 4. See Chicago Club 4. Bowling 4. Leaders' 4. Pep Club 4. G.A.A. 1,2,3,4. Yearbook Staff 3,4. Library Staff 2. Foreign Language Club 1,2,3. Ushers' Club 4. Bronze Pin 4. Parents' Night 4.

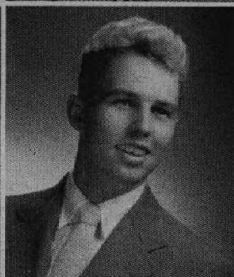


Dick Lebbin

Spring Concert 1. Cafeteria 4. See Chicago Club 4. Football 3,4. Track 3. Sophomore Senate 2. Foreign Language Club 1,2. Homeroom Vice-President 1.

Gene Lewis

Transferred from Hollywood Professional School 3. See Chicago Club 4. Yearbook Staff 3. Homeroom President 3. Dramatics Night 3. P.A. Announcer 3. Plays: "Ever Since Eve" 3. "Coo Coo Cottage" 3. "Our Hearts Were Young and Gay" 4. Reflections Revelry 4.



Howard Lindstrom

Orchestra 1,2,3,4. Band 1,2,3,4. Freshman Choir 1. Spring Concert 1,2,3,4. Football 1,2,3,4. Basketball 1,2,3. Track 1,2,4. Pep Club 4. Reflections Revelry 1,2,4. Color Guard 1,2,3. Junior Prom Committee 3.

Marilyn Lumpp

Freshman Choir 1. Cafeteria 4. See Chicago Club 4. Bowling 4. Tumbling 1. Water Carnival 1. Twirling 4. Leaders' 4. Pep Club 4. G.A.A. 1,2,3,4. Drill Group 4. Foreign Language Club 2,3. Ushers' Club 3,4.



Sylvia Maheras

Style Show 1. Spring Concert 1. Cafeteria 4. Pep Club 4. Home Nursing 4. Library Staff 1.

June Maier

Cafeteria 4. See Chicago Club 4. Bowling 4. Tumbling 1. Equestrian Club 3. Pep Club 4. G.A.A. 1,2,3,4. Yearbook Staff 2. Library Staff 3. Foreign Language Club 3,4. War Activities 1,2,3.



Stella Makarski

Freshman Choir 1. Spring Concert 1. Cafeteria 4. Pep Club 4. Home Nursing 4. Foreign Language Club 2,3. Bronze Pin 4.

Marilyn A. Marguerite

Style Show 3. Girls' Glee Club 3. Spring Concert 3. Cafeteria 4. See Chicago Club 4. Parents' Night 4. Pep Club 4. G.A.A. 2,3,4. Home Nursing 4. Foreign Language Club 2,4. Homeroom Secretary 2.



Celia Margalski

Transferred from Nanticoke H.S. 2.

William Martini

Transferred from Wauconda Twp. H.S. 2. Ticket Sales Committee 4. Cafeteria 4. See Chicago Club 4.



Violet C. R. Martinson

Choir 2. Freshman Choir 1. Spring Concert 1,2. Cafeteria 4. See Chicago Club 4. Life Saving 4. Bowling 4. Home Nursing 4. Pep Club 4. Yearbook Staff 4. Library Staff 3. Foreign Language Club 2. National Honor Society 3,4. 100 Per Cent Club 3,4. Nilehilitte Staff 3. Gold Pin 4. Silver Pin 3. Bronze Pin 2. War Activities 1,2.

Jack McNeely

Orchestra 3. Spring Concert 1. Cafeteria 4. See Chicago Club 4. Football 1. Basketball 1,4.



James McNeely

Freshman Choir 1. Spring Concert 1. See Chicago Club 4. Football Captain 3,4. Football 1,2,3,4. Basketball 1,3,4. Track 1,2. Bowling 4. Junior Prom Committee 3. Pep Club 4. Reflections Revelry 3. Yearbook Staff 3. Junior Council 3. Foreign Language Club 3. Homeroom President 4.

William McNeill

Red Cross Council 1. Orchestra 2,3. Band 2. Minor Music Award 3. Bowling 4. Sophomore Senate 2. Dramatics Night 3. Declamation Contest 3. Plays: "Smilin' Thru" 4. "Double Exposure" 3.



Albert Miller

Freshman Choir 1. Football 1,2,3,4. Track 4. Junior Prom Committee 3. Pep Club 4. Reflections Revelry 3. Homeroom Vice-President 1.

Joan Miller

Transferred from Von Steuben H.S. 3. Cafeteria 4. See Chicago Club 4. Pep Club 4. Dramatics Night 3. Plays: "One Heart, \$4.50" 3.



Mary Helen Miller

Transferred from Waukegan Twp. H.S. 3. Cafeteria 4. See Chicago Club 4. G.A.A. 3,4. Home Nursing 4. Yearbook Staff 4. Chemistry Club 4.

Richard Meyer

Transferred from Carl Schurz H.S. 3. Cafeteria 4. Basketball 3,4. Baseball 3,4.



Ed Meyer

Cafeteria 4. Baseball 1,2,3. Basketball 1. Cross Country 2. Photography Club 2.

Frances Monahan

Freshman Choir 1. Spring Concert 1. Life Saving 2,3,4. Tumbling 1. Synchronized Swimming 3,4. Water Carnival 3,4. G.A.A. 1,2,3,4. Reflections Revelry 4. Foreign Language Club 3,4. Dramatics Night 2,3,4. Declamation Contest 2,3. Yearbook Staff 4. Plays: "Smilin' Thru" 4. "Our Hearts Were Young and Gay" 4.

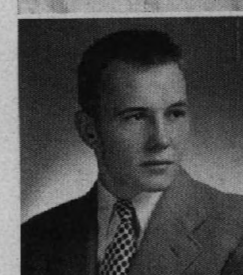


Charlotte Monson

Transferred from North Park Academy 2. Cafeteria 4. See Chicago Club 4. Track 3. Pep Club 4. G.A.A. 3,4. Home Nursing 4. Yearbook Staff 3,4. Foreign Language Club 2.

Robert Mueller

Freshman Choir 1. Spring Concert 1. Football 1,2,3,4. Baseball 1.



John Noffz

Cafeteria 4. See Chicago Club 4. Parents' Night 3. Operators' Club 4.

Joyce Dolores Nordlund

Style Show 3. Girls' Glee Club 1,2. Spring Concert 1,2. Cafeteria 4. See Chicago Club 4. Parents' Night 2. 8th Grade Night 1. Pep Club 4. G.A.A. 1,2,3,4. Drill Group 4. Home Nursing 4. Dramatics Night 3.



Patricia Norum

Girls' Glee Club 2,3,4. Band 1,2. Major Music Award 4. Freshman Choir 1. Spring Concert 1,2,3,4. Cafeteria 4. See Chicago Club 4. Parents' Night 2,3. Bowling 4. Water Carnival 1. Pep Club 4. G.A.A. 1,2,3. Foreign Language Club 2,3. Declamation Contest 3. Plays: "Double Exposure" 3. "Our Hearts Were Young and Gay" 4.

Donald Olson

Freshman Choir 1. See Chicago Club 4. Parents' Night 1,2. Basketball 1. Swimming Team 2,3,4. Bowling 4. Baseball 1,2,3,4. Pep Club 4. Junior Classical League 2,3. Photography Club 2. Nihilite Staff 3. Homeroom Vice-President 2.



George Pasek

Football 2,3,4. Track 3,4. Chemistry Club 4. Baseball 1.

Alma Patzke

Girls' Glee Club 4. Orchestra 1,2,3. Minor Music Award 3. Spring Concert 1,2,3,4. Cafeteria 4. See Chicago Club 4. Parents' Night 4. Pep Club 4. G.A.A. 1,2,3. Play Day 4. Home Nursing 4. Yearbook Staff 4. Sophomore Senate 2. National Honor Society 3,4. 100 Per Cent Club 4. Gold Pin 4. Silver Pin 3. Bronze Pin 2.

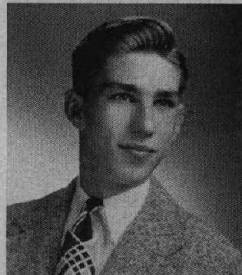


Vivian Pawlowski

Style Show 2,3. Cafeteria 4. G.A.A. 2,3. Home Nursing 4.

Robert Pearson

Choir 3,4. Boys' Glee Club 2,3. Minor Music Award 3. Freshman Choir 1. Spring Concert 2,3,4. Cafeteria 4. See Chicago Club 4. Football 1,2,3,4. Basketball 3. Track 1,2,3,4. Tumbling 4. Foreign Language Club 2,3. Color Guard 1,2. Homeroom President 1,2. Junior Prom Committee 3.



June Elizabeth Pence

Spring Concert 1. Cafeteria 4. See Chicago Club 4. Parents' Night 3,4. Track 3. Life Saving 4. Water Carnival 1,2. Pep Club 4. G.A.A. 1,2,3,4. Health Council 4. Home Nursing 4. Reflections Revelry 4. Yearbook Staff 3. Library Staff 2. Foreign Language Club 1,2,3. Ushers' Club 3. Nilchilite Staff 3,4. Homeroom Secretary 1,2,3,4. Declamation Contest 4.

Shirley L. Peters

Style Show 3. Freshman Choir 1. Spring Concert 1. Cafeteria 4. Tumbling 1. Pep Club 4. G.A.A. 1,2,3,4. Home Nursing 4. Foreign Language Club 2,3.

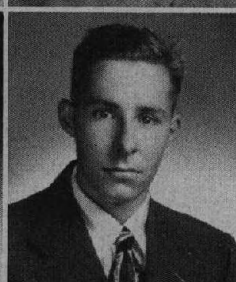


Marjorie Joy Peterson

Girls' Glee Club 1,3. Freshman Choir 1. Spring Concert 1. See Chicago Club 4. Parents' Night 1. Life Saving 4. Bowling 4. Pep Club 4. G.A.A. 1. Health Council 4. Home Nursing 4. Foreign Language Club 4. Homeroom Secretary 1.

Betty Plath

Style Show 2,3,4. Girls' Glee Club 1,2. Freshman Choir 1. Spring Concert 1,2. Cafeteria 4. Pep Club 4. G.A.A. 1,2. Home Nursing 4. Library Staff 3. Homeroom Treasurer 2,3,4.

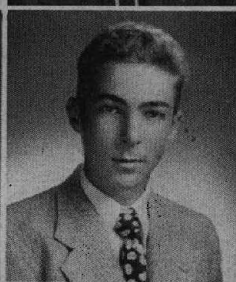
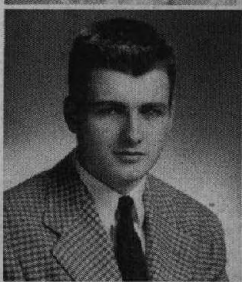


Roger Racine

Spring Concert 1. Cafeteria 4. Football 2,3. Basketball 1,2,3. Baseball 1.

Richard Rattray

Transferred from New Trier H.S. 2. See Chicago Club 4. Baseball 3,4. Track 2. Chemistry Club 4. Yearbook Staff 4. Junior Council 3. Operator's Club 2,3,4. Plays: "A Cup of Tea" 2.

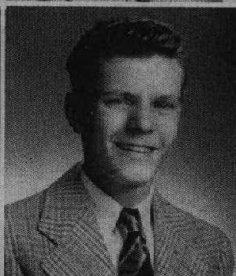


Paul Reiland

Freshman Choir 1. Spring Concert 1. See Chicago Club 4. Parents' Night 2. Football Manager 3,4. Basketball 3,4. Golf 3,4. Baseball 1. 8th Grade Night 1,2. Freshman Board of Advisers 1. Sophomore Senate 2. Foreign Language Club 3,4. Nilchilite Staff 4. Dramatics Night 3. Declamation Contest 3. Plays: "Message from Bataan" 2.

Henry Rings

Freshman Choir 1.



Harold Renis

Freshman Board of Advisors 1. Band 1. Football 1,2,3,4. Basketball 1,3. Baseball 1. See Chicago Club 4.

Eleanor H. Rollick

Freshman Choir 1. Spring Concert 1. Cafeteria 4. See Chicago Club 4. Bowling 4. Pep Club 4. Home Nursing 4. Yearbook Staff 4. Library Staff 3. Foreign Language Club 2. 100 Per Cent Club 4. Nilchilite Staff 3.



Joan Rouse

Choir 4. Girls' Glee Club 2,3. Minor Music Award 3. Major Music Award 4. Freshman Choir 1. Spring Concert 1,2,3,4. Cafeteria 4. Parents' Night 4. 8th Grade Night 1. G.A.A. 1,2,3,4. Yearbook Staff 1,3. Library Staff 2. Foreign Language Club 2,3,4. Photography Club 3.

Dorothy Ruesch

Style Show 2,3. Cafeteria 4. Bowling 4. Home Nursing 4.



Marianne Lois Ruesch

Choir 2,3,4. Girls' Glee Club 2,3. Band 3. Minor Music Award 3. Major Music Award 4. Freshman Choir 1. Spring Concert 1,2,3,4. Cafeteria 4. Parents' Night 4. Bowling 3,4. Tumbling 1. G.A.A. 1,2,3,4. Pep Club 4. Play Day 4. Home Nursing 4. Foreign Language Club 2,3. Ushers' Club 4.

Gertrude Scheidecker

Girls' Glee Club 2,3,4. Minor Music Award 4. Spring Concert 1,2,3,4. Parents' Night 4. Pep Club 4. Home Nursing 4. Foreign Language Club 1. 100 Per Cent Club 4. Homeroom Secretary 2.



Pat Schirra

Freshman Choir 1. Spring Concert 1. See Chicago Club 4. Parents' Night 3,4. Bowling 4. Synchronized Swimming 2. Water Carnival 1,2. Cheer Leader 1,3,4. Leaders' 3. Pep Club 4. G.A.A. Camp 1. G.A.A. Board 1,2,3,4. Reflections Revelry 4. Freshman Board of Advisers 1. Nilehilita Staff 3. Homeroom Vice-President 3. Dramatics Night 3,4. P.A. Announcer 3,4. Plays: "Smilin' Thru" 4. "Our Hearts Were Young and Gay" 4. Minor and Major Dramatics Award 3,4.

Chris Schlueter

Football 1,3,4. Swimming Team 1,2. Bowling 4. Synchronized Swimming 3. German Club 3,4. Baseball 1,4. War Activities 2.

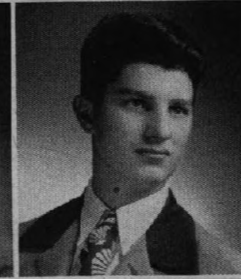


Anita Schmid

Parents' Night 1. Synchronized Swimming 1. Water Carnival 1. Cheer Leader 3,4. Pep Club 4. G.A.A. 1,2,3,4. Home Nursing 4. German Club 3,4. Homeroom President 1. "Citizens of Tomorrow" 4. Plays: "Our Hearts Were Young and Gay" 4.

Eugene Schultz

Cafeteria 4. Basketball 1. Track 2,4. Forum 1. Photography Club 1,2.



Peter Joseph Schuster

Spring Concert 1. Cafeteria 4. Tumbling 4.

Elaine R. Schroeder

Girls' Glee Club 2. Freshman Choir 1. Cafeteria 4. See Chicago Club 4. Basketball 2. Pep Club 4. Spring Concert 2. G.A.A. 1,2,3,4. German Club 3,4.



Shirley Seeley

Style Show 3,4. Parents' Night 2. Twirling 2. G.A.A. 1,2,3,4. Home Nursing 4. Foreign Language Club 2,3. Dramatics Night 2. Declamation Contest 2,3. Plays: "Rehearsal" 2. "Our Hearts Were Young and Gay" 4.

Lloyd Seltzer

Freshman Choir 1. Cafeteria 4. Football 2,3,4. Track 2,3,4. Foreign Language Club 1,2.



Dorothy Sherman

Style Show 2,4. Girls' Glee Club 3. Freshman Choir 1. Spring Concert 1,3. See Chicago Club 4. Parents' Night 4. Bowling 4. Twirling 4. Leaders' 3,4. Pep Club 4. G.A.A. 1,2,3,4. Play Day 2,3. Drill Group 4. Yearbook Staff 3,4. Ushers' Club 4. Forum 1.

Lorraine Sorensen

Girls' Glee Club 2. Cafeteria 4. See Chicago Club 4. Parents' Night 3. Bowling 4. Tumbling 1. Water Carnival 1. Cheer Leader 4. G.A.A. 1,2,4. Reflections Revelry 3,4. Foreign Language Club 3,4.



Jane Sparkman

Red Cross Council 1. Girls' Glee Club 2. Life Saving 4. Bowling 4. Pep Club 4. G.A.A. 1,2. Health Council 3,4. Chemistry Club 4. Library Staff 3. Foreign Language Club 2,3. Bronze Pin 3.

Elizabeth Steek

Girls' Glee Club 1. Freshman Choir 1. Spring Concert 1. Cafeteria 4. See Chicago Club 4. Bowling 4. Tumbling 1. Pep Club 4. G.A.A. 1,2,3,4. Home Nursing 4. Ushers' Club 4. Homeroom Treasurer 3.

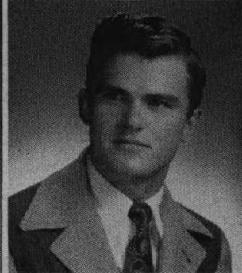
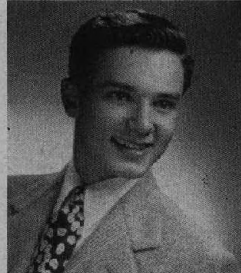


Ted Stockfisch

Freshman Choir 1. Cafeteria 4. See Chicago Club 4. Basketball 1,2,3,4. Track 2,3. Bowling 4. Baseball 1,2,3,4. Foreign Language Club 2,4.

David Straw

Band 1,2,3. Freshman Choir 1. Spring Concert 1. See Chicago Club 4. Football 1. Basketball 1. Swimming Team 2,3,4. Bowling 4. Synchronized Swimming 2,3,4. Water Carnival 2,3,4. Baseball 1,3,4. Cheer Leader 4. Chemistry Club 4. Foreign Language Club 1,2. Operators' Club 3. Color Guard 1,2,3. Homeroom Treasurer 2,3. "Citizens of Tomorrow" 4.



Edward Such

Spring Concert 1. Cafeteria 4. Football 2. Tumbling 4. Nihilite Production Manager 4.

Cathryn Tasker

Transferred from North Park Academy 3. Pep Club 4. Health Council 4.



Patricia Taugner

Transferred from Taft H.S. 4. Cafeteria 4. See Chicago Club 4. Life Saving 4. Synchronized Swimming 4. Water Carnival 4. Home Nursing 4. Chemistry Club 4.

Evelyn Taylor

Freshman Choir 1. Parents' Night 1. Bowling 4. G.A.A. 1,2,3. Yearbook Staff 2,3,4. Library Staff 2,3,4. Junior Classical League 1,2. French Club 3,4.



Joan Taylor

Transferred from Pontiac Twp. H.S. 2. Girls' Glee Club 2. Spring Concert 2. See Chicago Club 4. Parents' Night 2. G.A.A. 3,4.

Merrill Francis Taylor

Band 1. Cafeteria 4. See Chicago Club 4. Football 1. Baseball 3,4. Cross Country 4. German Club 3,4. Dramatics Night 2. P.A. Announcer 2. Plays: "Message from Bataan" 2.

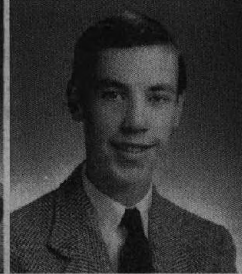


Catherine Thompson

Style Show 4. Spring Concert 1. Cafeteria 4. See Chicago Club 4. Parents' Night 1,4. Basketball 2,3. Life Saving 4. Bowling 4. Synchronized Swimming 4. Water Carnival 4. Pep Club 4. G.A.A. Camp 1. G.A.A. 1,2,3,4. Play Day 1. Home Nursing 4. Reflections Revelry 4. Freshman Board of Advisers 1. Foreign Language Club 3. Nihilite Staff 4. Homeroom Secretary 2,3. 8th Grade Night 1.

Wendell Toepfer

Transferred from Downers Grove H.S. 2. Spring Concert 2. Cafeteria 4. See Chicago Club 4. Mixed Chorus 2. Foreign Language Club 3.



James Todd

Minor Dramatics Award 3. Reflections Revelry 3. Plays: "One Heart, \$4.50" 3. "Smilin' Thru" 4. "Our Hearts Were Young and Gay" 4.

Joyce Tompkins

Home Nursing 4. Foreign Language Club 2. Glee Club 3.



Joe Toth

Spring Concert 1. Cafeteria 4. Football 2. Track 2,3,4. Cross Country 4.

Dorothy Trausch

Style Show 2,3. Freshman Choir 1. Cafeteria 4. See Chicago Club 4. Twirling 1. Home Nursing 4. Reflections Revelry 3.



Elmer L. Valkenaar Jr.

Choir 1. Boys' Glee Club 1. Freshman Choir 1. Spring Concert 1. Cafeteria 4. See Chicago Club 4. Parents' Night 1,2. Baseball 1. Football 1,2,3,4. Track 2,3,4. Tumbling 4. Synchronized Swimming 1. Water Carnival 1,2,3. Reflections Revelry 1,2,3. Chemistry Club 4. Operators' Club 3,4. Nilehilite Production Manager 2. Homeroom Vice-President 2. 8th Grade Night 1,2.

Robert Wahrer

Freshman Choir 1. Spring Concert 1. Cafeteria 4. See Chicago Club 4. Parents' Night 2. Chemistry Club 4. Operators' Club 2. Color Guard 1,2,3. 8th Grade Night 1.



Eleanor Walsh

Transferred from Amundsen H.S. 4. Choir 4. Cafeteria 4. See Chicago Club 4. Bowling 4. Cheer Leader 4. Pep Club 4. G.A.A. 4. Home Nursing 4.

Robert Wehr



Dolores Wells

Transferred from South Shore H.S. 3. Cafeteria 4. See Chicago Club 4. Parents' Night 3. Water Carnival 3. G.A.A. 3,4. Home Nursing 4. Reflections Revelry 4. Nilehilite Staff 3,4. Dramatics Night 3. Declamation Contest 3. Plays: "Double Exposure" 3. "Coo Coo Cottage" 3. "Smilin' Thru" 4. Junior Prom Committee 3.

Joan C. Westerberg

Style Show 4. See Chicago Club 4. Life Saving 4. Bowling 4. Equestrian Club 3. Leaders' 4. G.A.A. 1,2,3,4. Ushers' Club.



Margaret Ann Wetmore

Freshman Choir 1. See Chicago Club 4. Parents' Night 3,4. Tumbling 1. Synchronized Swimming 2. Water Carnival 2. Pep Club 4. G.A.A. 1,2,4. Library Staff 2. Foreign Language Club 2,3. Ushers' Club 3,4.

Joseph Wettengel

Cafeteria 4. See Chicago Club 4. Parents' Night 4. Football 3,4. Track 2,3,4. Pep Club 4. Nilehilite Production Manager 3.



Frank Williams

Spring Concert 1. Cafeteria 4. See Chicago Club 4. Football 1,2,3,4. Basketball 1,2,3,4. Junior Council 3. Forum 2. Homeroom Vice-President 1. Most Valuable Player Award (Basketball) 4.

Evert Willney

Cafeteria 4. Nilehilite Production Manager 4.



Evelyn Windmeier

Red Cross 1. Orchestra 2,3. Band 2,3. Minor Music Award 3. Freshman Choir 1. Spring Concert 2,3. Parents' Night 1,2. Pep Club 4. G.A.A. 1,2,3,4. Play Day 2. Home Nursing 4. Chemistry Club 4. German Club 3,4. Homeroom President 1. Homeroom Vice-President 2. Bronze Pin 4. 8th Grade Night 1.

William Witte

Choir 1. Spring Concert 1. Cafeteria 4. See Chicago Club 4. Parents' Night 4. Football 1,2,3,4. Bowling 4. Most Valuable Player Award (Football) 4. Tumbling 4. Junior Prom Committee Chairman 3. Pep Club 4. Chemistry Club 4. Yearbook Staff 3. Senior Cabinet 4. Foreign Language Club 3. Forum 2,3. Homeroom President 2,3.



Bettie M. Youngberg

Spring Concert 1. See Chicago Club 4. Water Carnival 1,2. G.A.A. 1,2,3,4. Foreign Language Club 3.

Mildred Zavrel

Style Show 4. Spring Concert 1. See Chicago Club 4. Bowling 4. Cheer Leader 1,2,3,4. Pep Club 4. G.A.A. 1,2,3,4. Home Nursing 4. Freshman Board of Advisers 1. Senior Cabinet 4. Foreign Language Club 3. Forum 1,2. Nilehilite Staff 4. Dramatics Night 3. Junior Prom Committee 3.



Geraldine Zeller

Freshman Choir 1. Cafeteria 4. See Chicago Club 4. Parents' Night 1. Pep Club 4. G.A.A. 1,2,3,4. Home Nursing 4. Foreign Language Club 4.

August E. Ziehlke

Bowling 4. Foreign Language Club 2.



Jeanette Ziehlke

Style Show 2. Cafeteria 4. See Chicago Club 4. Pep Club 4. Home Nursing 4. Library Staff 3,4. Foreign Language Club 3,4.

Phyllis Ambler

Transferred from Hirsch H.S. 3. Girls' Glee Club 3. Cafeteria 4. See Chicago Club 4. Bowling 4. Pep Club 4. G.A.A. 3,4. Reflections Revelry 4. Yearbook Staff 4.



Joan Bruck

Spring Concert 1. Cafeteria 4. See Chicago Club 4. Parents' Night 4. Twirling 2. G.A.A. 1,2,3. Yearbook Staff 3. Foreign Language Club 3. Dramatics Night 3.

Seniors Without Pictures

George Blameuser

Cafeteria 4. See Chicago Club 4. Football 4. Bowling 4. Homeroom President 3. Homeroom Vice-President 4. Junior Prom Committee 3.

Donald Dadigan

Choir 2,3,4. Double Quartet 3,4. Minor Music Award 3. Major Music Award 4. Freshman Choir 1. Spring Concert 1,2,3,4. Parents' Night 4. "Citizens of Tomorrow" 4.

Robert Fee

Transferred from Evanston Twp. H.S. 1. Cafeteria 4. See Chicago Club 4. Foreign Language Club 3.

Marvin Struck
(February Graduate)

Graduates — August 1947

Baumhardt, Patricia
Bernardi, Betty
Boldt, Ray
Carlson, Marion
Chadwick, Edward
DuMont, Nancy
Hill, Dorothy
Huber, Josephine

Humphrey, Phyllis
Kaehler, Arlene
Katzel, James
Kellen, Betty
Knapp, Herbert
Kretschmar, John
Miller, Albert
Schirra, Patricia

Taylor, Evelyn



TOP ROW
(left to right)

Anderson, Gordon
Anderson, Stanley
Arndt, Marilyn
Arnold, Jane
Austin, Marvin
Baptist, Sona
Baier, Don
Baldwin, Barbara

ROW II

Ballantine, Barbara
Barrett, Chuck
Bartolini, Nona
Batz, Roy
Bauman, Gloria
Bennett, Ralph
Bernard, Gerrie
Bernges, Doris

ROW III

Biedier, Mary
Biehn, Don
Bierbaum, Bill
Bitter, Eugene
Blessing, Jim
Boemmel, Marion
Bonaguro, Hilda
Boznos, Sam

ROW IV

Brod, John
Brown, Don
Brua, Gertrude
Burke, Bob
Calkins, Gerry
Carlson, Don
Canavan, John
Carlson, Mary

ROW V

Carlson, Pat
Christensen, Don
Clarkens, Bernice
Cole, Evelyn
Colman, Tom
Comstock, Bill
Conard, Jackie
Connell, Marsha

ROW VI

Darbyshire, Patti
Deily, Jim
Devermann, Milton
Donaldson, Laurretta
Dye, Lyle
Eberhardt, Jo Ann
Eichelberg, Dick
Engert, Marilyn

ROW VII

Farr, Jessie
Fitzgerald, Tom
Fortman, Bill
Fotsch, Bill
Franson, Ida
Garland, Jim
Garner, Lee
Garrity, Pat

ROW VIII

Glauner, La Verne
Gregor, Ken
Groenland, Roger
Gross, E. Dick
Grosse, Gilbert
Halinton, Melvin
Hall, Laurence
Hall, Shirlee

ROW IX

Hardin, Willard
Harrer, Lee
Hattendorf, Ray
Hawkinson, Shirley
Hedstrom, Margaret
Heiniger, Jim
Heinz, John
Johnson, Bernice

ROW X

Hennig, Louis
Hilfer, Louis
Hohs, Bill
Homer, Bill
Jacobson, Charlene
Jarmuth, Irene
Johnson, Barbro
Johnson, Janet

J U N I O R S

J U N I O R S

TOP ROW
(left to right)

Jones, Herb
Kadlec, Ed
Kante, Lee
Kaupter, Barbara
Keesey, Jackie
Kella, Bill
Kennedy, Betty
King, Bob



ROW II

Kluesing, Lucy
Knapp, Phil
Koch, Jeanette
Koch, Norma
Kohl, John
Kohler, Alfred
Krueger, Marion
Kufeldt, Gwen



ROW III

Kylen, Margaret
Kutz, Ed
Lamberg, Nancy
Lamp, Jackie
Lamb, Laura
Lange, Barbara
La Plant, Roger
Larson, Nancy



ROW IV

La Veau, Phil
Liesveld, Deane
Linskey, Ed
Liveris, Dan
Long, Marilyn
Lump, Don
Mahnke, Evelyn
Mathews, Diane



ROW V

Matthews, Joyce
Mattson, Dolores
McClaskey, Beverly
McCormack, George
McNámar, Mary
Medlin, Carol
Merle, Barbara Ann
Merrill, Clayton



ROW VI

Mertes, Lois
Michel, Eva Lou
Mickow, Melaine
Mikulec, Chester
Miethe, Florence
Miner, Dick
Mueller, Marion
Neuson, Bill



ROW VII

Nissen, Sally
Nixon, Jack
Noff, Dick
Noll, Don
Nordlund, Darlene
Nordquist, Walter
Novak, Gerrie
O'Brien, Dick



ROW VIII

Oehring, Jeannette
Olson, Joyce
Olson, Pat
Paolell, Don
Paulson, Dolores
Pearson, Marilyn
Peerman, Shelby
Permer, Bill



ROW IX

Perrett, Barbara
Peters, Joanne
Peterson, Doris
Peterson, Ed
Phillippy, Marjorie
Przepiorski, Carrie
Racine, Don
Ray, Marice



ROW X

Redemann, Lois
Ritter, Mary Ann
Robbins, Howard
Rodley, Eileen
Ruesch, Carole
Rugen, Paul
Runnels, Donna
Russell, Stuart



J U N I O R S



TOP ROW (left to right)

Sandberg, Regina
Scanlon, Nancy
Schewe, Jane
Schewe, Joan
Schey, Lorenz
Schiff, Norman
Schmid, Rudy
Schmidt, Eric

ROW II

Schmidt, Shirley
Schmitz, Dave
Seltzer, Bob
Siegel, Howard
Smith, Marilyn
Soergel, Ed
Steek, Dorothy
Stelzer, Joan

ROW III

Stolteben, Don
Suckow, Eugene
Tegtman, Dolores
Thomas, Rosemary
Trapp, Bill
Tolzien, Jeanette
Trefil, Evelyn
Triebold, Louis

ROW IV

Varelas, Helen
Votava, Barbara
Wead, Jim
Webster, Bonnie
Weigt, Harold
Wenzel, Harriet
Werhane, Elmer
Wettengel, Polly

ROW V

Wieder, Clay
Wilton, Donna
Windmeier, Bill
Wolfski, George
Wokoun, Bill
Wuest, Art
Zuber, Chuck

Juniors Without Pictures

Ahrensburg, Betty
Barg, Arlene
Coverly, Roger
Geerds, Florence
Hartung, Pat
Hoppe, Carlyle
Hull, Joan
Hutchings, Bill
Johnson, Ronald
Kelley, Bill
Kelley, Jack
Kiefer, Noel
Lutgen, LaVerne
Meyer, Leslie
Miller, Arthur
Molitor, Alvin
Piehler, Wayne
Rochow, Margie
Ross, Eugene
Sanke, Bill
Schilling, James
Schmidt, Florence
Schrimph, Carl
Schuler, Carol
Sembach, Dick
Stowe, Robert
Tamminga, Elsa

SOPHOMORES

TOP ROW
(left to right)

Adams, Nancy
Ahrens, John
Anderson, Nancy
Archebald, Ed
Artelt, Jeanevene
Arthur, Jim
Barbour, Danna
Bates, Bill



ROW II

Baumann, Gil
Becker, Frank
Beebe, Ed
Bicknese, Marianne
Biederer, Virginia
Birkemeier, Marilyn
Bjorkdahl, Carl
Black, Tom



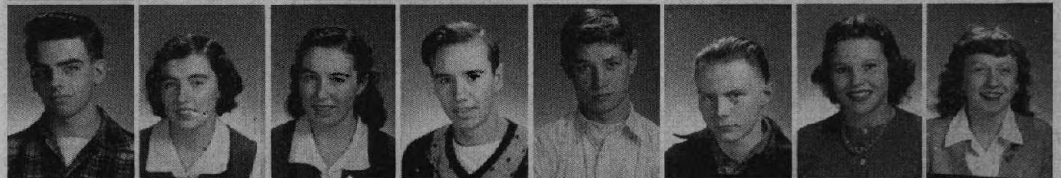
ROW III

Blake, Nancy
Bonaguro, Adeline
Bonney, Chuck
Briggs, Carole
Brice, Tom
Brod, Don
Brunke, Chuck
Bussey, George



ROW IV

Campbell, Bill
Campbell, Dorothy
Campbell, Charlette
Carlson, Dave
Carlson, Don
Casson, Raymond
Charland, Nancy
Clarkens, Alice



ROW V

Clearman, Ann
Cleary, Tom
Cobb, Vernon
Conrad, Gertrude
Conrad, Joan
Cook, Bob
Copeland, Mary
Thiry, Helen



ROW VI

Cornell, Conrad
Coy, Gene
Cysewski, Mary
Daiberl, Lois
Day, Joan
De Vitto, Frank
De Vries, Peter
Dickens, Bob



ROW VII

Dressel, Charlotte
Duchay, Rojeanne
Dyrssen, Eleanor
Ebert, Don
Ebenroth, Diane
Eckert, Ted
Eichling, Bill
Endrulat, Roy



ROW VIII

Esch, Elaine
Ash, Joyce
Falk, Joan
Falknor, Leah
Febrow, Lester
Fishback, Bill
Fox, Gerry
Franson, Oscar



ROW IX

Fredricks, Sue
Freund, Bill
Geng, Joan
Garday, Gloria
Gatter, Fred
Gerhardt, Barbara
Gerhardt, Burton
Gearhart, Lawrence



ROW X

Gengler, Ken
Giles, Gloria
Glennie, Helen
Grabfelder, Lila
Graefen, Bill
Grafke, Bill
Hackmeister, Anna
Haefel, Kaye





TOP ROW
(left to right)

Hanneman, Dorothy
Hanson, Pat
Hardin, Carolyn
Harrer, Joan
Harris, Bruce
Harvey, Jack
Haut, Alfred
Heidelbauer, Marion

ROW II

Heurlin, Jack
Heveran, Bill
Hicks, Bob
Hill, Tracy
Hogan, Bob
Holmes, Roy
Horndasch, Dick
Hughes, Dick

ROW III

Ide, Dolores
Jaekels, Betty
Jaeger, Kaye
Johnson, Janice
Jones, Warren
Joos, Le Roy
Jostock, Henry
Joyce, Dennis

ROW IV

Juul, Ann
Keegan, Mary Ann
Kent, Ferol
Kluesing, Caroline
Kluesing, Gil
Klump, Pat
Kettel, Don
Kokot, Ed

ROW V

Korsmo, Donna
Kranz, Chuck
Krejsa, Jean
Krueger, Eleanor
Lange, Shirley
Larson, Jack
Larson, Judy
Lawrence, Marlys

ROW VI

Leach, Diane
Leganger, Ronald
Lee, Marilyn
Leeming, Bill
Lind, Marjorie
Lindahl, Bob
Lind, Bob
Loefgren, Betty

ROW VII

Madden, Tom
Maeder, Barbara
Magden, Bob
Maier, Lenard
Mangum, Dot
Marbolz, Karyl
McKenna, Pat
McKimmon, James

ROW VIII

McKinley, Ronald
(Junior)
Meyer, Patty
Morrison, Ann
Morse, Mary
Moser, Lauretta
Munsterman, Ruth
Munsterman, Mary
Muto, Ken

ROW IX

Nelson, Harold
Nelson, Roy
Newton, Nancy
Nickel, Bill
Nipper, Ward
Nordlof, Audrey
Norman, Dick
Nymark, Phil

ROW X

Odegaard, Elsie
Hosfield, Jim
Patske, Ellen
Perdue, Dorothy
Peterson, Marge
Peterson, Bob
Philippy, Mary
Poehlman, Bill

S O P H O M O R E S

SOPHOMORES

TOP ROW
(left to right)

Porter, Jess
Proesel, Carole
Provost, Dick
Quesnell, Jo
Rasmussen, Dick
Ravencroft, Sandra
Reed, Tom
Riha, Marion



ROW II:
Robb, Tom
Rochm, Charles
Rollick, Nick
Ryan, Howard
Scheuerman, Pat
Schey, Mary Lou
Schmidt, Barbara
Schmidt, Pat



ROW III:
Schmitz, Dorothy
Schnur, Ann
Schuh, Dorothy
Schulz, Bartella
Secly, Jackie
Seltzer, Jerry
Siegel, Don
Sivertsen, Harold



ROW IV:
Sherman, Betty
Shields, Tom
Shiley, Dick
Smith, Ralph
Sommer, Pat
Southworth, Karen
Sprungman, June
Steen, Henrietta



ROW V:
Stillman, Allen
Stockenberg, Carol
Tamburino, Rick
Thielke, Harold
Thiell, Nancy
Corduau, Marilyn
Thiry, Margaret
Thorsen, Relda



ROW VI:
Tomeczak, Frances
Trausch, Hank
Van Horne, Bill
Verlenden, Don
Veit, Herbert
Vick, Lois
Vosnos, Angela
Voss, Charles



ROW VII:
Wagstaff, Chuck
Walberg, Ralph
Walther, Edith
Walz, Marilyn
Warkentien, Reine
Warner, Pat
Watkins, Armin
Watters, Gray



ROW VIII:
Wdowicki, Albert
Western, Rex
Whitten, Dean
Wieder, Jim
Wilgus, Joe
Witte, Bob
Wachter, Fred
Wolitski, Elaine



ROW IX:
Yost, Donita
Youngberg, Betty
Zetnick, Don



Sophomores Without Pictures

Awazzadeh, Florence
Ash, Joyce
Bailey, Pat
Black, Frank
Bruce, Bill
Chastain, Phyllis
Coleman, Bernelle

Copeland, Emma
Eckert, Ted
Freres, Glenn
Geng, Joan
Gerber, Tom
Goodrich, Jean
Gulbrandsen, Myrle

Herbert, Vincent
Heineman, Alice
Helton, Bob
Kozak, Gerrie
McNeill, Frank
Martinson, Barbro
Meyer, Patty

Miller, Norbert
Pasek, Peter
Robinson, Shirley
Roamm, Jack
Russakov, Kathleen
Spencer, Joan
Steele, Kenn

Stehle, Barbara
Strand, Don
Wachter, Fred
Warner, Pat
Wilson, Dick
Yates, Phyllis
Zallar, John



TOP ROW
(left to right)
Anderson, Betty
Ash, Joan
Asmussen, Mary
Babendererde, Bernice
Bailey, Jim
Baity, Melvin
Banghart, Barbara
Barnet, Dorothy

ROW II
Bastow, Jane
Baumann, Dick
Bell, Nancy
Bishop, David
Blessing, Bill
Boekenhauer, Janice
Boemmel, Doris
Berneman, Nancy
(Sophomore)

ROW III
Bornemeier, Beattie
Boznos, John
Brei, Fred
Braun, Donna
Brock, Don
Brophy, James
Browder, Mrytte
Browne, Anne

ROW IV
Bruck, Ralph
Bucalo, Jack
Buerk, Edward
Linke, Ken
Butterworth, Ed
Cardno, Dick
Carver, Dick
Clancy, Jim

ROW V
Cliff, Lois
Cockron, Bill
Coe, Jack
Coleman, Bernell
Colman, Georgia
Conrad, Lona
Crimmins, George
Struebing, Lee

ROW VI
Daly, Barbara
Davis, George
Davis, Jim
Dean, Julia
DeStories, Jack
Nachbauer, Helen
Dodge, Geri
Dolan, Ted

ROW VII
Donavan, Joe
DuBois, Bob
Duchay, John
Dudick, Joy
Elkin, Elizabeth
Engelhard, Connie
Enke, Carol
Erickson, Dick

ROW VIII
Tait, Bob
Ferris, Dick
Forbes, Lillian
Forbes, Margie
Fuller, Bob
Garpow, James
Gerhardt, Nancy
Gille, Gerrie

ROW IX
Greenwood, Jackie
Groll, Donna
Grosse, Lily
Grow, Conrad
Halbrendt, Marie
Hallwachs, Bob
Hamlet, Joan
Hansen, Charles

ROW X
Hartig, Allen
Hartig, Evelyn
Hartigan, Dorothy
Harwood, Bob
Heiniger, Peter
Hellar, Fat
Harper, Harold
Hennig, Doris

FRESHMEN

F R E S H M E N

TOP ROW
(left to right)

Henry, Larry
Hoffmann, Carol
Hoffman, Pat
Holtman, Irene
Jackson, Virginia
Jacobs, Jeanne
Jacobson, Gloria
Jeter, Jim



ROW II

Jettmann, Betty
Jettmann, Ethel
Johnsen, Marvin
Jones, Chuck
Kadlec, John
Karsten, Fred
Kathe, Bill
Kathe, Jim



ROW III

Kaufman, Dick
Keesey, Louis
Kelly, Jean
Kennedy, Jim
Kienzler, Evelyn
Kirscht, Margie
Kock, Lorraine
Kokum, Barbara



ROW IV

Krause, Martha
Krueger, Albert
Krueger, Julia
Krupka, John
Lacey, Joan
Lacey, Florence
Lamb, Jane
Landt, Charles



ROW V

Lane, Nancy
Lange, Paul
Lange, Dick
LaPlant, Ken
Larson, Harriet
Laurent, Joan
Lenberg, Lois
Loftus, Jerry



ROW VI

Lutkehaus, Sally
Lyde, Doris Jean
Madsen, Doris
Maihack, Donald
Martin, Dick
Martin, Marilyn
May, Rose Mary
Merle, Tommy



ROW VII

Mertes, Joan
Meyer, Glenn
Meyer, Robert
Meyer, Shirley
Milazzo, Phyllis
Cummings, Pat
Milz, Phil
Mistarz, Bob



ROW VIII

Moldenhauer, Eddie
Mouahan, Dot
Mueller, George
Shuman, Rosemary
Netwig, Mary Jean
Nellessen, Dolores
Nielsen, Joanne
Nielsen, Bob



ROW IX

Nock, Jim
Norquist, Arnold
Nymark, Jane
O'Hara, Mary
Olson, Barbara
Olson, Reuben
Pasin, Pete
Paulson, Barbara



ROW X

Pepper, Leona
Pergande, Carol
Peschke, Georgianne
Peterson, Ronald
Petts, Florence
Phillips, James
Popp, Walter
Powers, Bob

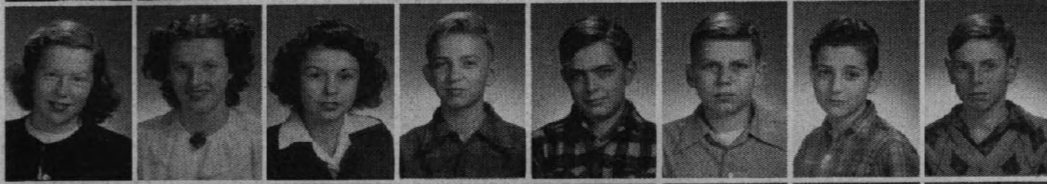


FRESHMEN

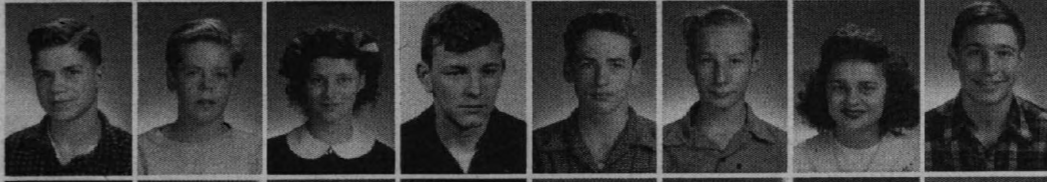


TOP ROW
(left to right)

- Rahn, Idele
- Reiland, Marilyn
- Reuther, Betty
- Riggs, Betty
- Rinaldi, Lois
- Ruthman, Albert
- Robb, Ian
- Robinson, Marita



- ROW II
- Roden, Marri
 - Ross, Gladys
 - Rossmann, Betty
 - Ruessch, Ray
 - Russell, Calvin
 - Schelling, Ken
 - Scheurman, Ed
 - Schilling, Winston



- ROW III
- Schmiegelt, Fritz
 - Scholow, Bob
 - Schrambeck, Joyce
 - Schrimpf, Fred
 - Schultz, Clyde
 - Schultz, Ronald
 - Schuster, Elaine
 - Schweger, Roger



- ROW IV
- Sefick, Pauline
 - Senick, Joan
 - Serum, Charles
 - Dilley, Beverly
 - Shey, Bob
 - Miller, Sylvia
 - Siensen, Harold
 - Silicani, Marion



- ROW V
- Slack, Beverly
 - Slusser, Paul
 - Smale, Gordon
 - Smith, Carol
 - Stansfield, Dave
 - Steele, Ken
 - (Sophomore)
 - Strange, Herbert
 - Straw, Bill



- ROW VI
- Thimois, John
 - Swanson, Dick
 - Swartz, Joyce
 - Taylor, Bob
 - Tessien, Betty
 - Timberg, Shirley
 - Thiry, Jeanette
 - Thrasher, Jean



- ROW VII
- Turnquist, Joan
 - Voss, Dick
 - Votava, Jean
 - Waldin, Paul
 - Walsh, James
 - Wolter, Clifford
 - Wdowski, Paul
 - Wegener, Elmer



- ROW VIII
- Weigt, Irene
 - West, Bob
 - Whitney, Delbert
 - Willert, Joan
 - Young, John
 - Ziehlke, Dolores
 - Ziehlke, Margaret

Freshmen Without Pictures

- | | |
|-------------------|-------------------|
| Becker, Ray | Risinger, Charles |
| Coursey, Mickey | Rogginger, Ronald |
| Craig, Ashley | Rome, Darlene |
| Dahm, Jay | Rosche, Faith |
| Eppler, Elsie | Sherberg, Jean |
| Mackintosh, Sonya | Wailand, Dorothy |
| Mueller, Adeline | Weber, Sandra |
| Nepstad, Virginia | Winger, Dan |
| | Witte, Phyllis |

Senior Cabinet

Class rings, Senior Breakfast, gifts for seniors who were ill, Commencement exercises—these were some of the problems this hardworking six, under Mr. Harold Ohlson, solved this year.

SEATED, left to right: Mildred Zavrel, Bill Witte, Shirley Bartleson, Bob Farr. Standing: Bill McNeill, Mr. Ohlson, Ollie Brens.



Junior Council

The school year has been crammed full of problems which are bound to spring up when an active group like the junior class is concerned! The Council and Miss Margaret De Booy, its sponsor, dealt with these problems and also planned one of the most important social events of the year—the Junior Prom.

SEATED, left to right: Clayton Merrill, Catherine Gerich, Miss Margaret de Booy. Standing: Bill Comstock, Jo Ann Eberhardt, Lyle Dye, Mary Ann Ritter, Rudy Schmid.



Sophomore Senate

Sophomores to solve the problems of sophomores is the purpose of this organization, which is sponsored by Mr. Ihne. Helping to plan all-school assemblies, in addition to planning the sophomore assemblies, is one of their many services to their fellow classmates.

SEATED, left to right: Mary Ann Keegan, John Zallar, Nancy Adams, Mr. Marvin H. Ihne, Karen Southworth. Standing: Carolyn Kluesing, Leah Falknor, Peter Pasek, Bob Hogan, Bob Dickens, Jack Roman, Harold Sivertsen, Bob Witte, Jo Quesnell, Don Siegel.

Freshman Board

Getting accustomed to high school is somewhat baffling at first. But the members of the Freshmen Board, under the direction of Miss Marjorie Ronalds, help their fellow freshmen along by planning the rousing Freshmen Party and several assemblies during the year.

SEATED, left to right: Miss Marjory Ronalds, Joan Mertes, Joan Hamlet, Joan Lacey. Standing: Jim Bailey, Peter Heiniger, John Young, Bob Tait, Roger Schweger, Dolores Nellesen, Robert Meyer, Tom Merle, Jim Kennedy.





General Staff of Yearbook

"Phone the printer and find out what . . .

"Good grief! The football pictures . . .

"How can we *ever* meet that deadline?"

But they did. All kinds of difficulties, and plenty of them, had to be faced during this past year. The road was tough, but under the supervision of Mr. Paul Eberhardt and Editor Nancy Hall, these obstacles were successfully overcome, and the result is this yearbook which you are now reading.

SEATED, left to right: Marilyn Smith, Don Christensen, Bonnie Webster, Nancy Hall, Mary Helen Miller, Sam Boanos, Florence Miethke. Standing: Mr. Paul M. Eberhardt.



Senior - Faculty Section

Doggin' the footsteps of the faculty and seniors until they have their pictures taken for the yearbook is guaranteed to keep Miss Grace Pendleton and her assistants busy. But not only that, they collect and write up all data concerning the faculty and graduating class.

SEATED, left to right: Eva Lou Michel, Ellie Rollick, Patty Meyer, Miss Pendleton. Standing: Violet Martinson, Don Verleden, Jean Leach, William Heveran, Charlene Jacobson. Not pictured: Chairman, Dorothy Goers.

Financial Staff

Raising enough money to finance this yearbook was certainly not an easy task. But the staff, guided by Mr. VanArsdale, came through with flying colors. The handling of yearbook sales and the planning of Reflections Revelry caused many a headache before deserving success was obtained.

FIRST ROW, left to right: Mr. VanArsdale, Ellen Patske, Janet Johnson, Marsha Connell, Barbara Perrett, Barbara Votava, Evelyn Taylor, Alma Patske. SECOND ROW: Joanne Peters, Doroihy Sherman, Audrey Nordloff, Barbara Baldwin, Joan Falk, Joanne Gubbins, Janet Larson, Jeannette Oehring, Dorothy Davis, Regina Sandberg, Linda Larson. THIRD ROW: Jo Quesnell, Don Biehn, Mary Morse, Evelyn Cole.



Nilehilite

Nilehilite features, news items, and many amusing columns have proved interesting and informing to both faculty and students. The staff working with Mr. Eberhardt and Editor June Pence, has built the Nilehilite into an exceptional high-school paper. Distributed twice a month throughout the school year, it is a member of the National Scholastic Press Association, a nation-wide association of school newspapers.

FIRST ROW, left to right: Mr. Paul Eberhardt, June Pence, Pete Reiland, Betty Fortman. SECOND ROW: Caroline Gylden, Lyle Dye, Noelle Elkins, Herb Knapp, Carol Krause. THIRD ROW: Dolores Paulsen, Janet Hayes, Bill Comstock, Marian Carlson, Cathy Thompson. FOURTH ROW: Jackie Lamp, George McCormack, Jim Schilling, Pat Hanegan.



Latin Club Officers

This club aims to further interest in the culture, civilization, and language of ancient Rome. It has several traditions, the most colorful being the Roman Banquet. The ceremonies re-enacted at this banquet add much to the scene of "the glory that was Rome." Mrs. Dorothy Hind and Miss Marjorie Ronalds are the co-sponsors of the Latin Club.

FIRST ROW, left to right: Joan Hamlet, Faith Rosche. SECOND ROW: Ward Nipper, Edward Beebe, Janet Hayes, Joy Dudick. STANDING: Joe Donovan, Anne Clearman.



German Club

Students combine their study of the German language with the study of German culture at the club's meetings. One of the specialties of the club sponsored by Miss Theresa Kranz is the singing of old German folk songs.

ROW ONE, left to right: Evelyn Windmeier, Bill Windmeier, Ted Eckert, Henry Jostock, Alfred Haut. ROW TWO: Ellie Bomark, Tom Cleary, Rudy Schmid, John Brod, Fred Wachter, Bob King. ROW THREE: Arlene Barg, Miss Kranz, Florence Miethke, Anita Schmid, Shirley Baumhardt. ROW FOUR: Betty Jerger, Jim Deily, Lois Bornemeier, Elaine Schroeder. ROW FIVE: Ronald Krueger, Merrill Taylor, Al Heim. STANDING: Dona Bishop, Elsa Tamminga, Roy Endrulat, Eugene Bitter, Chris Schlueter, Phil Knapp, Philip Nymark, Harold Renis.



French Club Officers

The French Club has direct contact with students living in France, via air mail. A French movie, eating at a French restaurant, and a gala Christmas party are other activities of this group.

ROW ONE, left to right: Pat Horner, Doris Lyde, Kaye Jaeger, Evelyn Taylor, Florence Avassadeh. ROW TWO: Kaye Haefel, Joyce Swartz, Mary Netwig, Rosemary Shuman, Donita Yost, Elaine Wolitski. STANDING: Joan Turnquist, Mari Cysewski, Mary McNamara, Mrs. Baker.



Spanish Club Officers

¿Habla Vd. Español?

Interest in the Spanish language and Latin American countries is stressed by the Spanish Club. Frequent movies are shown at the meetings with the customs, habits, and living conditions of Spanish-speaking people.

SITTING, left to right: Miss Small, Mr. Adams, Melaine Mickow. STANDING: Paul Reiland, Louis Kettel, Bill Witte.





FIRST ROW, left to right: Barbara Banghart, Bonnie Webster, Joyce Mathews, Melaine Mickow. SECOND ROW: Miss Schaefer, Lois Bornemeier, Jane Arnold, Mary Alice Clynes, Beatrice Bornemeier, Jane Bastore, Anne Browne.

Saddle Club

- No, they aren't bow-legged and they don't shoot from the hip. But they are practically as good riders as any which might thunder from the pages penned by Zane Grey!

Nilehi's Saddle Club, headed by Miss Mildred Schaefer, is one of the most popular organizations at school. Beginners and advanced riders make up the membership. They may ache after a ride, but they always come back for more. It's all in fun and they love it!

Bowling Club

Every Monday and Wednesday after school this year, a bus filled with Nilehi students pointed its shiny nose toward Gabby Hart-

nett's Bowling Alley. At first, some of these students had never handled a bowling ball before, so it did not seem strange that they couldn't keep score either. But who made the rounds explaining how, figuring complicated scores, and giving pointers? Why, Schaefer, of course!

As time went on, the scores shot up and terms like turkey, split, railroad, and cherry became part of the conversation heard in and out and among the bowling alleys.

To top off a wonderful season of bowling with something special, members of the club attended a delightful banquet, planned just for them.

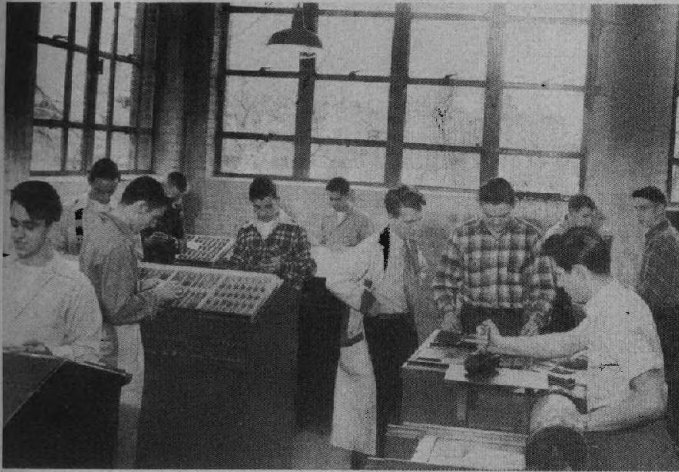
Both Monday and Wednesday leagues are members of the American High School Bowling Congress.



Phyllis Ambler, highest scorer of both leagues, aims for a strike.



SEATED, left to right: Carol Enke, Virginia Jackson, Polly Wettengel, Patti Norum, Marilyn Martin, Georgia Colman, Bernice Johnson, Sally Lutkehaus, Miss Schaefer. STANDING: Bill Van Horne, Dick Fuhr, August Ziehlke, Hal Swertsen, Barbara Olson, Joyce Swartz, Shirley Timberg, Lois Vick, Barbara Paulson, Ann Morrison, Phyllis Ambler, Joan Turnquist.



Print Shop

You name it! They print it! Game schedules, programs, office forms, and school paper, "The NileHillite" are a few of the many services which Mr. Meier and his printing classes perform for our school.

LEFT TO RIGHT: Clayton Wieder, Nick Rollick, John Kretschmar, Bill Neuson, Bill Hohns, Charles Brunke, Mr. Meier, John Hoffmann, Harold Weigt, Charles Barrett, Henry Ahrens.



Visual Aids

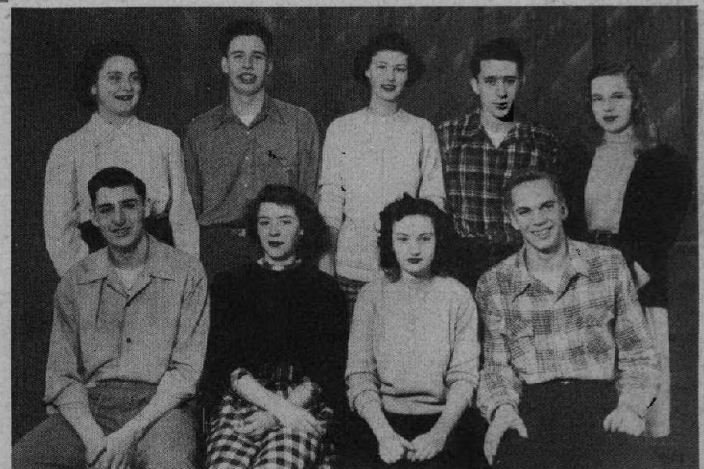
Variety is the spice of life! With movies ranging from history to movies about good posture, many classes are brightened by this active group under the sponsorship of Mrs. Hind.

FIRST ROW, left to right: Bob Mistarsz, Ken Schelling, Calvin Russell, David Stansfield, John Duchay, Frank McNeill, Jay Dahm, John Noffz, John Ahrens. SECOND ROW: Noel Kiefer, Harold Larson, Stuart Russell, Jim Deily, Bob Conway, Bob Kepen, Don Noll, Don Kettel, Henry Jostock. THIRD ROW: Mrs. Hind, Don Christensen, Dick Rattray, Phil LaVeau, Bob Farr, Phil Knapp, Elmer Werhane, Larry Henry, Louis Henning, Jim Kennedy, Hal Sivertsen, Bill Eichling, Tom Madden, Dean Whitton, Carl Bjorkdahl, Jack Nixon, Tom Robb.

See Chicago Club Officers

These students are at the helm of one of Nilehi's busiest organizations—the See Chicago Club. With Miss Grace Harbert, they plan explorations for their fellow club members into practically every nook and cranny of Chicago.

SEATED, left to right: Phil Brice, Betty Fortman, Betty Steek, Bob Farr. STANDING: Lois Bornemeier, Louis Kettel, Marjorie Peterson, Bill Witte, Janet Larson.



Forensic Club

Although organized only this year, the Forensic Club is off to a flying start! Directed by Mr. John Betts, the club presented a formal debate before the Sophomore Assembly, April 22, on the subject of socialized medicine. The six members who debated were Mary McNamara, Barbara Merle, Marilyn Smith, John Young, Ed Archibald, and Ed Chadwick, who is not pictured.

STANDING, left to right: Ed Archibald, Lyle Dye, Clayton Merrill, Don Biehn, Bill Bierbaum, Mr. Betts, John Young. SEATED: Marilyn Smith, Mary McNamara, Betty Ann Ahrensburg, Barbara Ann Merle, Don Christensen.



Smilin' Through



CAST

SEATED, left to right: Shirley Hawkinson, Eva Lou Michel, Dolores Wells, Angela Voznos, Elaine Wolitski, Frances Monahan. STANDING: Bill Wokoun, Don Biehn, Clayton Merrill, Lyle Dye, Jim Todd, Ken Gengler, Miss Hughes.

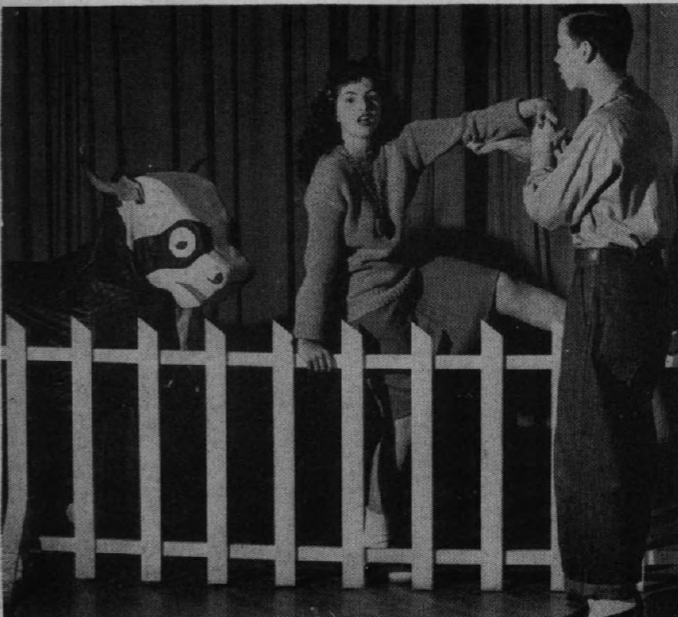
With a cast numbering thirteen students, the first dramatics production of this year, "Smilin' Through," was presented on November 14, 15, 16 under the able direction of Miss Helen Hughes.

"Smilin' Through" was also the first melodrama ever to be produced by the Nilehi Dramatics Department. But the change in the type of production proved popular, as a capacity crowd attended each performance.

The setting of the play was in Ireland. Love, comedy, and murder were woven throughout the plot

revolving around the three main characters, John Carteret, portrayed by Clay Merrill; Dolores Wells and Eva Lou Michel alternated as his niece Kathleen; and Lyle Dye as Kenneth Wayne, Kathleen's suitor.

The supporting cast included Jim Todd as Dr. Owen Harding, Shirley Hawkinson as Ellen, Don Biehn as Willie Ainley, and Lyle Dye as Jeremiah Warner. Wedding guests were portrayed by Nancy Thiell, Joan Hull, Elaine Wolitski, Bill Wokoun, Angela Voznos, and Ken Gengler.



Our Hearts Were Young and Gay

CAST

SEATED, left to right: Shelby Peerman, Patti Norum, Anita Schmid, Janet Hayes, Bea Delles. FIRST ROW, STANDING: Shirley Seeley, Betty Fortman, Frances Monahan, Sally Nissen, Jim Todd. SECOND ROW: Clayton Merrill, Lyle Dye, Dick Graf, Gene Lewis, Harold Larson.



Dramatics productions have always been popular social events at Nilehi, and the hilarious comedy "Our Hearts Were Young and Gay" proved no exception. The play was presented February 13, 14, and 15 under the direction of Miss Helen Hughes assisted by two student directors, Bea Delles and Mary Alice Clynes.

Adapted for the stage from the book of the same name, it was the true account of the experiences of Cornelia Otis Skinner and Emily Kimbrough when they sailed to Europe during the roaring twenties. But romance and comedy sailed along with the girls, converting their trip into an experience which the

audience, filling the assembly room to capacity at each performance, will never forget.

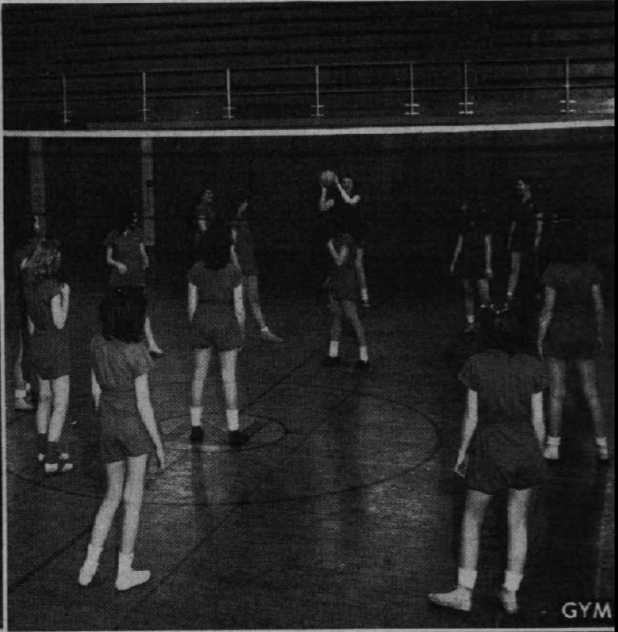
The cast included Mrs. Skinner, Janet Hayes; Cornelia, Pat Schirra and Anita Schmid, alternating; Emily, Shirley Seeley and Frances Monahan, alternating; Otis Skinner, Gene Lewis; Steward, Don Biehn; Purser, Harold Larson; Stewardess, Sally Nissen; Dick Winters, Dick Graf; Admiral, Lyle Dye; Harriet St. John, Betty Fortman; Winnifred Blauge, Patti Norum and Bea Delles, alternating; Leo McEvay, Jim Todd; Inspector, Joanne Eberhardt; Therese, Kaye Jaeger; Elise, Shelby Peerman; Monsieur De La Croix, Clay Merrill; and the window cleaner, Lyle Dye.



N
I
L
E
H
I



MUSIC MAJOR



GYM



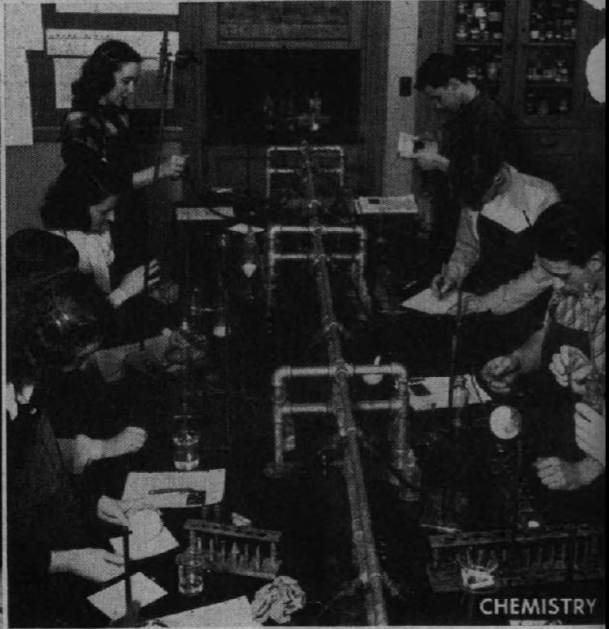
MECHANICAL DRAWING



GENERAL SCIENCE



PROBLEMS



CHEMISTRY



SENIOR ENGLISH



TYPING



U. S. HISTORY



ART MAJOR



GEOMETRY



SPANISH

A

T

W

O

R

K



Photography Club

This lens-happy group of camera fiends are responsible for many of the yearbook photos snapped 'round school this year. Their action shots of football and basketball have made it possible to recall exciting games of this past year more vividly.

SITTING, left to right: Adeline Bonaguro, Norman Schilf, Betty Ahrensburg, Mr. Scheer, Sam Boznos. STANDING: Jim Schilling, Bob Stelzer, Jim Wieder, Dick Noff, Don Racine, Stuart Russell, Bernice Clarkens, Lawrence Gerhardt, Noelle Elkins, Phil Knapp.

100 Per-cent Club

Here is a group of girls who should make excellent secretaries in the future. They have earned honor certificates for taking shorthand both speedily and accurately.

ROW ONE, left to right: Elsa Tamminga, Lucy Hamada, Dorothy Kruschka, Carl Holmberg, Helen Conrad, Joyce Gawrys. ROW TWO: Marjorie Philippy, Marion Kohl, Bernice Kosak, Joyce Tompkins, Eleanor Rollick, Violet Martinson. ROW THREE: Alma Patske, Ida Franson, Marge Kyles, Catherine Gerich, Hilda Bonaguro.

Library Staff

The competent staff under the supervision of Mrs. Michael directs traffic in and out (via library permits), checks out books, and, all in all, keeps the library running smoothly.

FIRST ROW, left to right: Sylvia Maheras, Bonnie Webster, Mrs. Michael, Nancy Lamberg, Shelby Peerman. SECOND ROW: Dorothy Mangum, Carolyn Kluesing, Lois Redemann, Dorothy Steek, Jeanette Zichlke, Marice Ray, Margaret Thiry. THIRD ROW: Evelyn Taylor, Gloria Baumann, Dolores Ide, Joan Spencer, Henrietta Steen, Nancy Borheman, Phylis Chastain, Arlene Barg. STANDING: Carole Ruesch, Lois Meries, Bernice Johnson, Annamay Hachmeister, Gloria Giles, Joan Conrad.

National Honor Society

Probably the most scholarly student organization at Nilehi is the National Honor Society. Its purpose is to create enthusiasm for scholarship and service, to encourage character development, and to promote leadership. The attainment of much-coveted membership in this organization is a desirable goal for all Nilehi students.

SEATED, left to right: Linda Larson, Grace Klehm, Violet Martinson, Dona Bishop, Lois Bornemeier. STANDING: Oliver Berens, Bob Farr, Joanne Gubbins, Alma Patske, Bob Bierbaum, Louis Kettel.



FIRST ROW, left to right: John Barker, Richard Wilton, William Kunkel, Lorraine Nelson, Fred Zimmermann, Richard Wanland, Jack Zimmerman, Mr. Eberhardt. SECOND ROW: Ted Lindstrom, William Ottens, Daniel Mack, Roy Feher, Jim Goff, Ronald Jones, Donald Grimshaw, Jacqueline Perrin. THIRD ROW: William Meyer, Melville Pokorney, Ed Ballantine, William Nissen, Robert Arnold, John Verlenden, Charles Butkus, William Cederberg, Henry Meinke.



BOTTOM ROW, left to right: Allen Karlov, Robert Schreiber, Robert Werhane, Nancy Ohlson, Ted Ebert, Richard Amos, Gus Boznos. SECOND ROW: Mr. VanArsdale, John Bredin, Thomas Davidson, Robert Engert, Gerald Slusser, Robert Brod, Robert Carlson. THIRD ROW: Arthur Jungdahl, Jarvis Gafford, Ed Fischer, Roger Loeftgren, Richard Tait, Gordon Brown, Arthur Schmidt, Joseph Denk.

University of Illinois Cooperative Extension Center

Because of the present crowded condition of established colleges and universities, the University of Illinois has developed extension centers in high schools of the state where work of the freshman year might be provided. This system is functioning in approximately 30 high schools in Illinois.

The college classes at Nilehi, which are fifty-six minutes in length, are held in the late afternoon. No registration for less than two semesters is accepted. The tuition for a semester is \$100 plus \$5 general laboratory and library fee. Sophomore classes will not be offered next year, and freshman classes may be discontinued.

Freshman programs are usually basic and general, no matter what field the student intends to concentrate in later. Rhetoric 1 and Rhetoric 2 (English) and hygiene are required. For his electives, the student may select from courses in accountancy, chemistry, speech, general engineering drawing, history, mathematics, economics, and zoology.

The Nilehi faculty members who taught the college classes this year were Charles Hussey, Thomas Kiviluoma, Harold Ohlson, Ronald VanArsdale, Paul Eberhardt, Miss Ada Immel, Miss Theresa Kranz, Miss Helen Keenan, John Betts, John Wilkins, and Rudyard Cook of Northwestern University.



BRASS SEXTET



*LEFT TO RIGHT:
Don Lumpp, Merryll
Bailey, Bill Homer, Tom
Madden, Tom Robb, Jim
Wead.*

Instrumental

Under the able direction of Mr. Collins, the Nilehi School Band and Orchestra have gained further recognition and noteworthy praise during this past year. After constant and diligent work in preparation, the band performed at football and basketball games, pep and award assemblies, and the Spring Concert. The orchestra also performed at the Spring Concert and at several plays presented by the Dramatics Department.



BAND

TWIRLERS, left to right: Laurretta Donaldson, Pat Garrity, Diane Mathews, Marion Riha. SECOND ROW: Bob Peterson, Anne Juul, Eleanor Dyrssen, Ann Morrison, Jack Heurlin, Marilyn Gustafson, Ray Ruesch, Lois Rinaldi, Grace Klehm. THIRD ROW: Robert Hallwachs, Bill Wokoun, Merryll Bailey, Don Lumpp, Bill Homer, Noel Kiefer, George Wolitski, Rick Tamburino, Philip Nymark, Eugene Bitter, Mr. Collins. FOURTH ROW: Walter Braun, Richard Cardno, Tom Robb, Bill Van Horne, Jim Wead, Don Christensen, Dorothy Perdue, Jeanevine Artelt, Elaine Wolitski. FIFTH ROW: Bill Straw, Jay Dahm, Tom Madden, Jack Nixon, Paul Shusser, Florence Petts, Dick Martin.



ORCHESTRA

SEATED, left to right: Donita Yost, Sylvia Mueller, John Young, Nancy Burge, Georgiana Peschke. SECOND ROW: Faith Rosche, Marilyn Martin, Walter Braun, Jack Heurlin, Marilyn Gustafson, Grace Klehm. THIRD ROW: Charlotte Campbell, Anne Juul, Don Christensen, Jay Dahm, Jeanevine Artlet, Elaine Wolitski, George Wolitski, Jim Wead, William Van Horne. STANDING: Marilyn Walz, Elsa Tamminga, Mr. Collins, Horvie Lindstrom.

DOUBLE QUARTET

Vocal

Both musical groups sang at the Parents' Night program, Christmas Vespers, and the Spring Concert. Under the direction of both Mrs. Betty Fettkether, who substituted as director during the first semester, and Miss Clara Klaus, these talented groups have gained even more popularity as a result of their fine performances.



SEATED: Margaret Donovan. ROW ONE: Mrs. Fettkether. ROW TWO, left to right: Don Verlenden, Joanne Gubbins, Doris Bailey, Evelyn Mahnke. ROW THREE: Elmer Werhane, Don Dadigan, Robert Peterson.

GIRLS' GLEE CLUB

FRONT ROW, left to right: Miss Clara Klaus, Carol Harnden, Edith Walthers, Charlotte Dressel, Gertrude Scheidecker, Joan Senick, Joan Turnquist, Pat Scheuerman, Sally Lutkehaus, Eleanor Kruger, Mary Biederer, Marilyn Reiland, Betty Lofgren, Dorothy Hanneman, Mary Musson, Margaret Hedstrom, Bonnie Webster, Marion Kreuger, Donna Runnels. SECOND ROW: June Sprungman, Doris Nielson, Mary Jean Brandt, Jane Nymark, Ann Browne, Pat Hoffman, Catherine Gerich, Gerrie Novak, Joy Dudick, Lucy Kluesing, Nancy Scanlon, Joan King, Margie Peterson, Leslie Meyer, Barbara Ann Merle, Nancy Gerhardt, Julia Kreuger. THIRD ROW: Joan Meries, Margie Kirceth, Marilyn Smith, Betty Younberg, Arlene Berg, Pat Hanson, Joan Falk, Barbara Votava, Deane Liesveld, Jo Ann Day, Grace Klehm, Marilyn Birkemeier, Joan Ash, Jackie Greenwood, Ann Schuur, Margie Phillippy, Evelyn Kienzler, Elsie Odegaard. FOURTH ROW: Gertrude Conrad, Rojeanne Duthey, Marilyn Walz, Pat Schmidt, Audrey Nordloff, Ida Fran-son, Barbro Martinson, Barbara Lange, Elizabeth Elkins, Diane Leach, Nancy Lane, Nancy Borneman, Janet Johnson, Alma Patzke, Jo Huber, Florence Miethke, Dorothy Schuh, Eleanor Dyrssen.

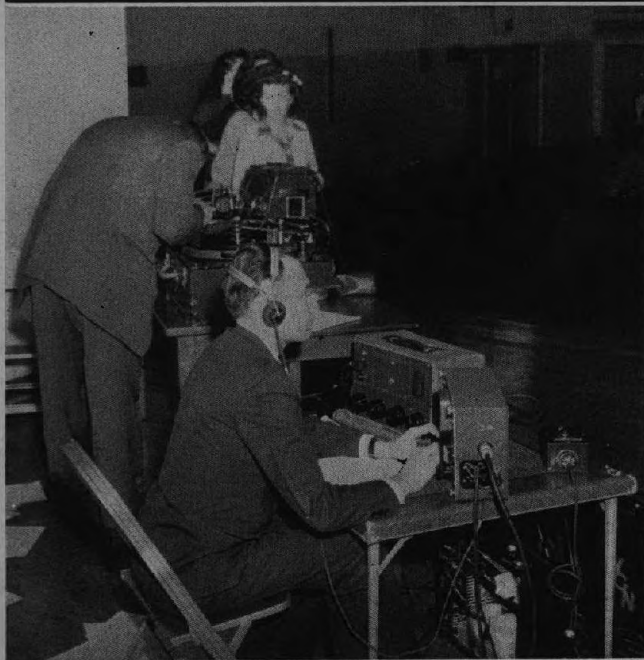


CHOIR

FIRST ROW, left to right: Gerry Calkins, Doris Bailey, Patty Meyer, Nancy Charland, Marilyn Arndt, Jane Arnold, Marianne Ruesch. SECOND ROW: Lois Meries, Evelyn Trefl, Dona Korsmo, Nancy Thiell, Joanne Peters, Marian Mueller, Frances Tomczak, Margaret Donovan. THIRD ROW: Doris Peterson, Sandra Raven-croft, Regina Sandberg, Mrs. Betty Fettkether, Rosemary Thomas, Betty Kellen, Elsa Tamminga. FOURTH ROW: Joan Rouse, Dorothy Schuh, Harold Weigt, Kenneth Gengler, Frank McNeill, Evelyn Mahnke, Joanne Gubbins. FIFTH ROW: Leonard Maier, Robert Peterson, Robert Pearson, Don Verlenden, Bill Bates, Art Wuest, Don Dadigan, Elmer Werhane.









Gun Spinners

LEFT TO RIGHT: Pat Hartung, Margaret Thiry, Grace Klehm, Shirlee Hall.



Flag Swingers

FIRST ROW, left to right: Miss Thurman, Barbara Baldwin, Margaret Thiry, Marilyn Long, Dorothy Sherman. SECOND ROW: Grace Klehm, Pat Hartung, Shirlee Hall, Nancy Scanlon, Jeanine Jacobs, Mary Ann Ritter.

Nilehi is proud of these hard-working girls. With Miss Mary Evelyn Thurman, their high stepping leader, they have given praiseworthy demonstrations of skill at both football and basketball games.

Fifteen twirlers with Miss Thurman traveled down to the International Circus in Chicago, daily from December 25 to January 5, during Christmas vacation-time. There they led the parade and started each performance off with flying colors. These girls were Marilyn Gustafson, Grace Klehm, Mary Ann Ritter, Dot Sherman, Betty Jane Sherman, Lucy Hamada, Barbara Baldwin, Polly Wettengel, Marilyn Long, Nancy Bell, Audree Bredberg, Jeanine Jacobs, Marilyn Lumpp, and Margaret Thiry.

The twirlers are not only quick with the baton, but with the needle also, for each girl sewed her own uniform with material furnished by the school.



Mary Evelyn Thurman



Twirlers

CENTER: Gerrie Sherman. FIRST ROW, left to right: Marilyn Gustafson, Audree Bredberg, Lucy Hamada, Betty Sherman, Marilyn Lumpp, Marilyn Long, Mary Ann Ritter, Nancy Bell. SECOND ROW: Jeanine Jacobs, Shirlee Hall, Nancy Scanlon, Grace Klehm, Pat Hartung, Margaret Thiry, Barbara Baldwin, Dorothy Sherman, Miss Thurman.

Synchronized Swimming Team

KNEELING, left to right: Bob Lindahl, Clark Gerber, Louis Kettel, Bob Blessing, Frank Becker, Delbert Whitney. **SECOND ROW**: Dona Bishop, Lois Bornemeier, Rita Hillinger, Leslie Meyer, Betty Loeffgren, Arlene Kachler, Frances Monahan, Jane Arnold, Bea Delles, Mr. Schubert, Emma Copeland, Jean Thrasher, Dorothy Sherman, Pat Freeding, Beatrice Bornemeier, Jo Ann Eberhardt, Eileen Rodlely, Dorothy Davis.



Water Carnival 1947

About forty members of the synchronized swimming class and the Nilehi swimming team took part in the annual Water Carnival under the direction of Mr. Anton Schubert, April 17, 18, and 19. The setting of the show was the cold, wind-blown regions of the Arctic. The polar effect was produced by the paintings made by students under the supervision of

Mr. John Wilkins, Nilehi art teacher.

A swimming duet by Lois Bornemeier and Lou Kettel, and a comedy by Lou Kettel and Gene Hegarty called "Lost Shipmates" were two of the highlights of the performance.

The original acts were written by Leslie Meyer and Lois Bornemeier, high-school students.

Mr. A. T. Schubert



Director





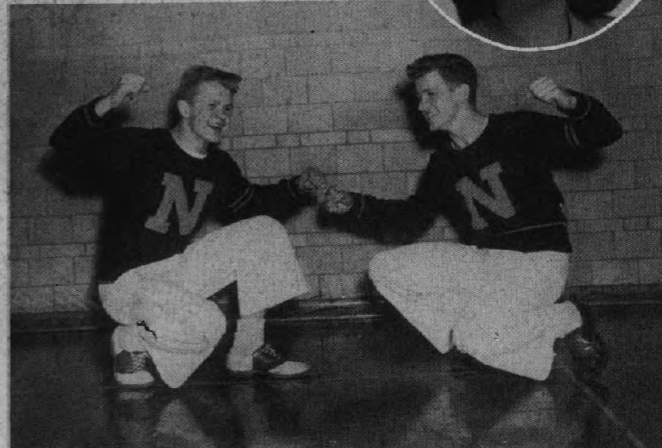
Lorraine Sorensen



Carol Krause



Anita Schmid



Boy Cheerleaders

Left to right:
Una Larson
Bill Abbink
Not pictured:
Dave Straw
Herb Knapp

Underclass Girls

Left to right:
Marilyn Pearson
Marilyn Reiland
Nancy Thiell
Mary Morse



Miss Mildred Schaefer
Sponsor

Trojan Wars are truly fought at each athletic contest led by our inspired cheerleaders and their spirited followers. These students, second in inspiration only to the team itself, are working constantly toward cementing sportsmanship in the hearts of the student body. Under the able supervision of Miss Schaefer these faithful pepsters have helped to bring victory to our team. Nilehi thanks these students for their unflinching support during the past seasons.



Pat Schirra



Dolores Lauth



Mildred Zavrel
Captain



Eleanor Walsh

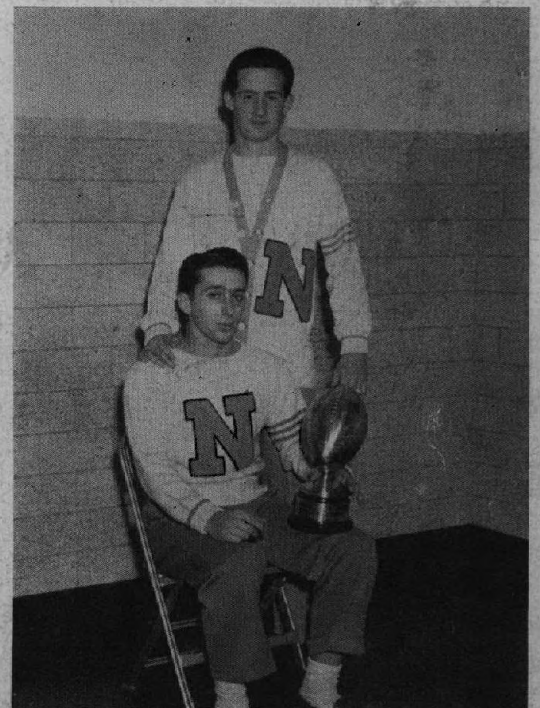
VARSITY FOOTBALL



BOTTOM ROW, left to right: Don Brown, manager; Tom Brophy, Dick Fisher, Tom Black, Phil Horton, Bob Mueller, Ed Kutz, Ray Bats, Bob Boehning, Pete Reiland, manager. SECOND ROW: Roger La Plant, manager; George Pasek, Elmer Valkenaar, Ray Carlson, Lee Garner, Jim Heiniger, Bill Witte, Bob Pearson, Ed Linskey, Howard Linstrom, Earle Carlson, Art Miller, Bill Neuson, manager. THIRD ROW: Assistant Coach Hussey, Joe Wetengel, Dick Lebbin, Laurence Hall, Ollie Berens, Al Miller, Frank Williams, Bill Comstock, Jim McNeely, Bob Farr, Ed Kadlec, Louis Kettel, Coach Isaacson. Not pictured: Phil Brice, George Blamcuser, Harold Remis.

Varsity Record

NILES	OPPONENTS	
37	Proviso Jay Vee	6
31	Libertyville	6
12	Arlington	7
34	Woodstock	7
7	Lake Forest	14
33	Leyden	0
25	Crystal Lake	6
27	Warren	6



The Varsity Football Squad chose Bill Witte as Most Valuable Player to climax his third year as varsity quarterback. Jim McNeely, all-conference center, was chosen Honorary Captain after leading the Trojans through their fine season.

TROJAN

Ray Batz, guard, junior

Ray has a lot of the valuable weight Niles was lacking last season. He played alert, steady ball and is one of the ten returning lettermen next year.

Ollie Berens, tackle, senior

After three years in a varsity berth, Ollie's loss next year will be deeply felt. He was one of the Trojan's outstanding linemen. Ollie could always be depended on to help the Trojans out of a tough situation.

Tom Black, back, sophomore

Being the only sophomore on the varsity this year, Tom should be a great help to Niles in the next two years. He was a hard-working, dependable player.

George Blameuser, end, senior

George was coming along fast when he was seriously injured midway in the season. His loss was felt by the Trojans.

Bob Boehning, center, senior

Bob was one of the best defensive men on the team. When the going was tough he was always in there fighting to the utmost for Niles. He was an excellent line backer.

Phil Brice, center, senior

A dependable sub, Phil was always ready to take over when his chance came. Injuries kept him sidelined most of his senior year.

Tom Brophy, end, senior

Playing his second year of football at Niles, Tom showed progress with each game. Tom was an excellent pass-receiver.

Earle Carlson, end, senior

A more steady, dependable player would be hard to find. He was handicapped most of the season by injuries.

Ray Carlson, tackle, senior

Ray showed he could play good ball early in the season,

winning for himself a first-string position. This was Ray's first year out for football. He was exceptionally good on defense.

Bill Comstock, end, junior

Bill was all a lineman should be plus a great pass-receiver. He was the favorite target for Witte's long passes. Niles will be depending a great deal on Bill next year.

Bob Farr, back, senior

It will be a long time before the Northeast Conference forgets Bob and his outstanding work as the Trojan's left-half-back. He was one of the four Trojans elected to the All-Conference team.

Dick Fisher, back, senior

A terrific little runner who, despite his size, played good ball for the Trojan eleven. Dick was always dependable.

Lee Garner, back, junior

Improving as the season passed he became exceptionally good on defense. Lee will see a lot of action next season because of his hard-working spirit.

Laurence Hall, tackle, junior

One of the bigger men of the squad, he played good defense for Niles. Another junior, with a lot of possibilities, Laurence will be back to strengthen the line next season.

Jim Heiniger, back, junior

Carrying on with family tradition, Jim played exceptionally brilliant ball for the Trojan eleven this season. After two years in a varsity berth he has collected valuable experience which will be put to good use next year. He was one of our most dependable backs, both offensively and defensively.

Bud Horton, back, senior

A small but powerful player, he held down offensive first-string fullback position all season. Bud made many crucial runs, as he was exceedingly fast.



WARRIORS

Ed Linskey, guard, junior

Niles is depending on Ed's weight and skill to strengthen the backbone of the line next season. He was a valuable asset to this year's aggressive line, playing excellent ball all season.

Jim McNeely, center, senior

After sparking the Trojans through their successful season, Jim went on to capture the title of Honorary Captain for the 1946 squad. Another hard working, heads-up lineman, he was one of the four players chosen to represent Niles on the All-Conference team.

Al Miller, guard, senior

Spirit, a most important factor of football, was ever present in Al. Niles has yet to see a fellow who could play harder, more consistent ball. He also was elected to the All-Conference team.

Art Miller, tackle, junior

Nilehi will be counting on Art's ability next year. He will undoubtedly follow in the footsteps of his brother, becoming one of the hard-fighting Trojans.

Bob Mueller, back, senior

Boxy was another miniature backfield man who played good ball until injuries forced him to the sidelines.

George Pasek, back, senior

Due to his outstanding track ability, George was another of Niles' speedy backs. He improved steadily as the season passed.

Bob Pearson, end, senior

Another one of the Trojans' capable linemen, a fine defensive end, Bob showed Nilehi he had what it took when it came to pass-receiving.

Harold Renis, tackle, senior

A hard fighting senior, Harry was always ready to take over every chance that he was given. Always dependable, Niles will miss his kind next season.

Ed Kadlec, guard, junior

Holding down a first-string position as Trojan guard, Ed was a valuable asset last season. He'll be back next year and will be depended upon because of his aggressive playing. Ed led all players on number of tackles made during the season.

Louis Kettel, guard, senior

A fine player for one year of experience, Lou could always be depended upon to produce good work for Nilehi.

Ed Kutz, back, junior

Although small, Ed carried a lot of power. Nilehi fans will be watching for his brilliant, skillful playing next year.

Dick Lebbin, guard, senior

An able lineman who improved with each game, Dick bolstered the Trojan wall whenever he was given the chance.

Howard Lindstrom, back, senior

Salty turned in some very good work and was in there playing hard ball every chance he got. He was one more Trojan who played a hard, steady season.

Elmer Valkenaar, end, senior

Elmer was a fine, steady player with a hard fighting spirit and a sense of humor that is an asset to any team.

Joe Wettengel, end, senior

One of the hard-working subs, Joe was always ready to take over for the gridiron Trojans when the chance came.

Frank Williams, end, senior

Although basketball was Red's favorite dish when it came to sports, he played good football for Niles. Red specialized in the kicking department.

Bill Witte, back, senior

Being named to the 'All-Conference' team proved to His teammates they had made a wise choice in electing Bill Most Valuable Player. We will long remember Bill's excellent work as Nilehi's star quarterback for three years.





Jay Vee Squad

BOTTOM ROW, left to right: Conrad Cornell, Bob Witte, Bob Burke, Dick Provost, Allen Stillman, Bill Freund, Jerry Seltzer. **SECOND ROW**: Jack Harvey, Don Baier, Gil Kluesing, Jim Blessing, Ed Soergel, Jack Larsen, Don Paolell, Burt Gerhardt, Pete Pasek, Ralph Walberg, Chuck Kranz, Don Carlson. **TOP ROW**: Carlyle Hoppe, Bob Seltzer, George Wolitski, Herb Jones, Noel Kiefer, Ed Beebe, Tom Fitzgerald, Henry Trausch, George Bussey, Dean Whitton, Coach Mackey. **NOT PICTURED**: Carl Bjorkdahl, Dick Nestad, Ed Peterson, Tom Reed, Dick Shiley, Don Siegel, Charles Voss, Jim Hosfield, Howard Siegel.



Freshman Squad

BOTTOM ROW, left to right: Chuck Risinger, Bob Scholow, Bill Blessing, Joe Donovan, Ken La Plant, Gordon Smale, Bob Fuller. **SECOND ROW**: Jim Brophy, Bill Siraw, Lou Keeseey, Roger Schweeger, Bob DuBois, Ed Buerk, Don Brock. **THIRD ROW**: David Stansfield, manager; Dick Bauman, manager. **FOURTH ROW**: Jack Coe, Dick Kaufman, Glenn Meyer, Dick Voss, Ed Butterworth, Pete Heiniger, George Crimmins, Lenny Lange. **TOP ROW**: Coach Galitz, Chuck Hansen, John Kadlec, Dick Erickson, Dick Cardno, Jim Davis, Jim Kennedy, Fred Bret, Ralph Bruck, Dick Ferris, Coach Ryden.

Jay Vee Record

N.T.H.S.	OPPONENTS	
12	Maine Frosh-Soph	26
32	Libertyville	6
38	Warren	0
19	Woodstock	6
33	Maine Frosh-Soph	13
32	Leyden	6
46	Crystal Lake	0

Freshman Record

NILES	OPPONENTS	
24	Arlington	6
19	Maine	0
25	Leyden	6
32	Maine	0
32	Crystal Lake	0

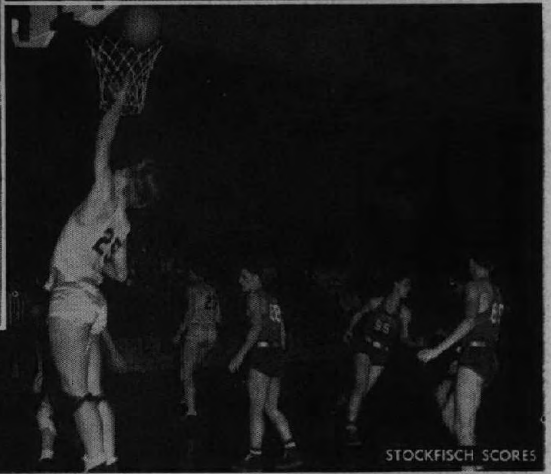
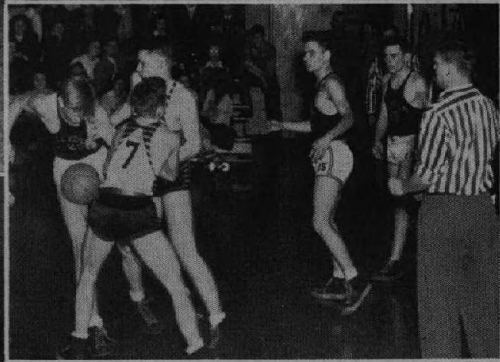
Nilehi's Varsity Football Squad completed their best season on record, being conference runner-up. Their only defeat was at the hands of equally powerful Lake Forest. Winning by 14-7, Lake Forest was the only team to score more than 7 points on the Trojans. Under Nilehi's own arc lights, the team was backed by greater support than ever before.



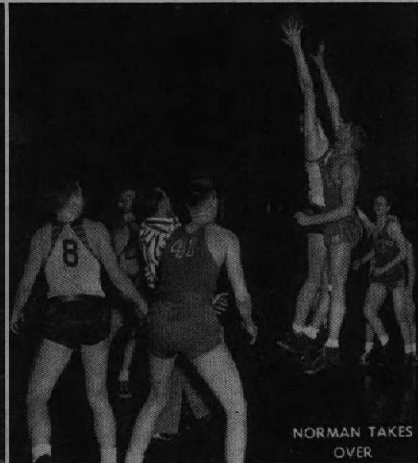
TROJAN WAR



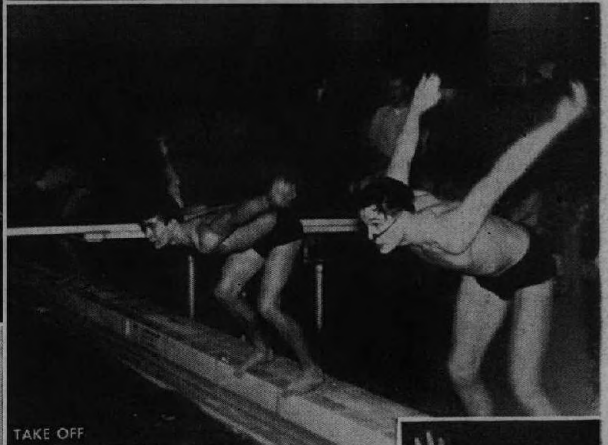
SNAKE DANCE



STOCKFISCH SCORES



NORMAN TAKES OVER

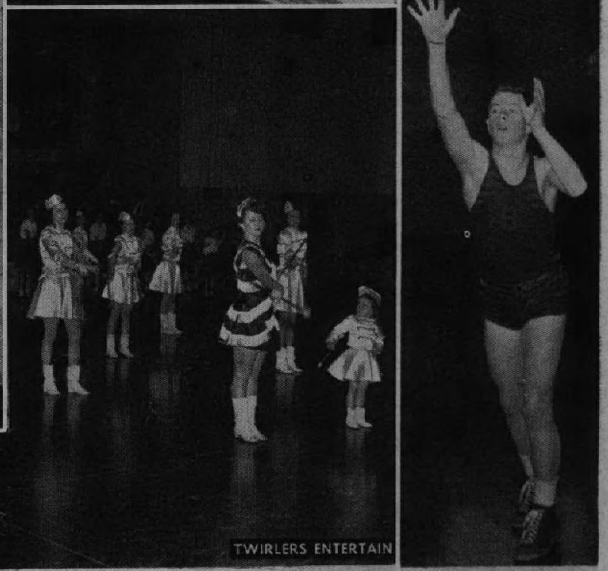


TAKE OFF



'L' IS FOR LEADERS

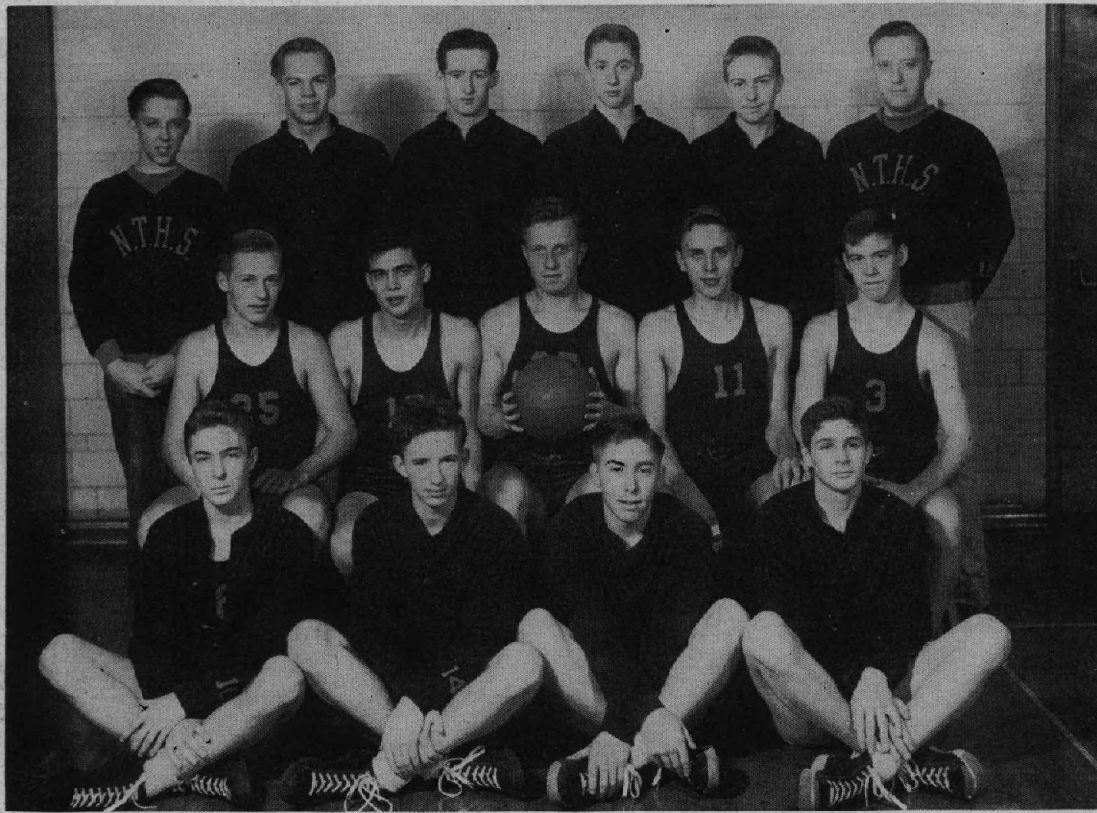
NILEHI COACHES



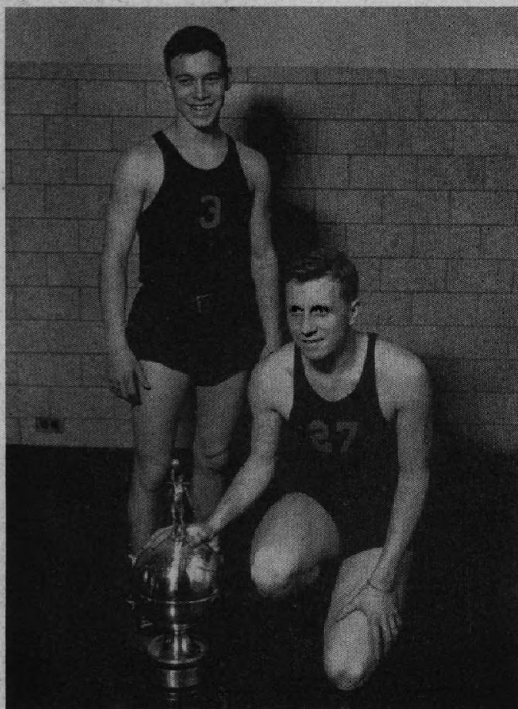
TWIRLERS ENTERTAIN



VARSITY BASKETBALL



*BOTTOM ROW, left to right: Pete Reiland, Jack McNeely, Don Kunkel, Ed Soergel.
SECOND ROW: Ted Stockfisch, Bill Comstock, Frank Williams, Wally Karnatz, Dick Fisher.
TOP ROW: Roger La Plant, manager; Bob Farr, Jim McNeely, Gordon Anderson, Don Carlson, Coach Galitz.*



Completing three years of Varsity basketball by playing in every game of this season, Frank Williams was nominated Most Valuable Player by his team-mates. Along with him, Dick Fisher, with his consistent heads-up ball playing, was chosen Honorary Captain.

Varsity Record

NILES	OPPONENTS	DATE
33	New Trier	32 Nov. 22
33	Evanston	62 Nov. 27
38	Libertyville	39 Dec. 6
45	New Trier	33 Dec. 7
46	Lake Forest	47 Dec. 13
57	Crystal Lake	86 Dec. 20
76	Alumni	54 Jan. 3
72	Warren	45 Jan. 10
64	Leyden	48 Jan. 17
49	Libertyville	46 Jan. 18
47	Arlington	63 Jan. 24
36	Maine	37 Jan. 25
45	Woodstock	36 Jan. 31
62	Leyden	39 Feb. 1
59	Warren	37 Feb. 7
45	Crystal Lake	56 Feb. 11
34	Lake Forest	49 Feb. 14
34	Arlington	60 Feb. 22
43	Proviso	59 Feb. 28

Varsity Players

Ted Stockfisch, senior

Always in there fighting when the going was tough, Ted's determined drive and hard play was a great asset to the Trojans all season. His absence will be deeply felt next year.

Bill Comstock, junior

Bill led the Trojans in scoring this year and was a real offensive threat with his uncanny long shots. He is one of the three members of the squad who will return next season.

Dick Fisher, senior

Fish made up in determination what he lacked in height. He was a deadly shot and was elected by his team-mates as captain of the squad.

Gordon Anderson, junior

Gordy developed a lot this year and will be counted on to carry a heavy load next season. His big night was at Woodstock.

Ed Soergel, junior

Ed's deadly eye accounted for many Trojan buckets. He was slow at getting started, but by the end of the season was the team's second high scorer.

Frank Williams, senior

Red was elected Most Valuable Player of this year's squad to climax his third year of Varsity ball. We'll miss his height next season.

Walter Karnatz, senior

Wally, a tall man, used his height to good advantage under both backboards. He played hard ball all season.

Jim McNeely, senior

Mac was especially strong on rebounds this year. Nilchi fans will miss his football antics on the basketball court next season.

Jack McNeely, senior

Jack is Jim's left-handed twin brother. Always a dependable man, he was a big asset to the team this year.

Bob Farr, senior

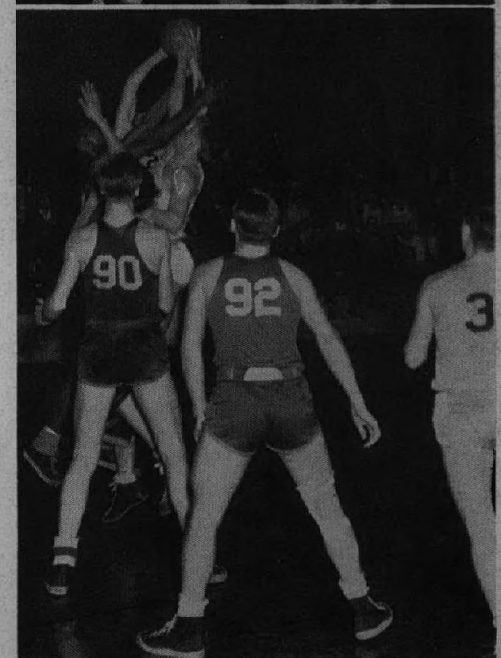
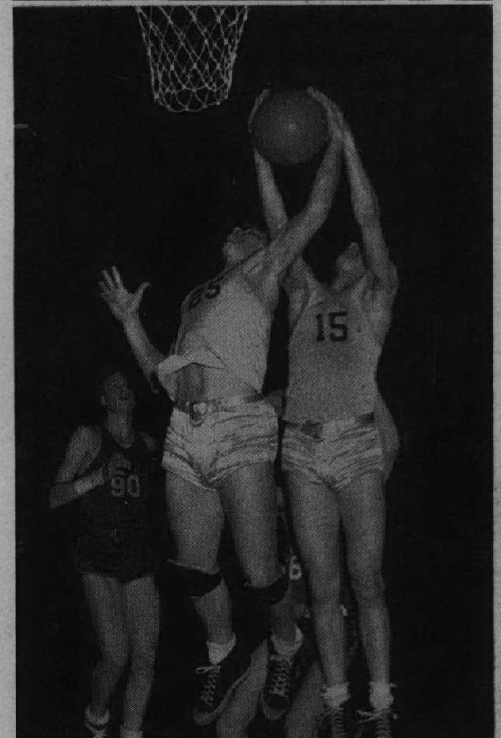
This is Bob's fourth year of basketball. He played a steady game and his great speed made him a tough man on defense.

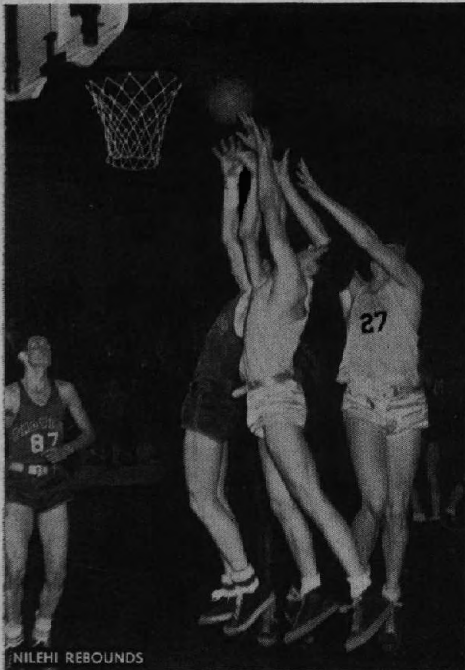
Paul Reiland, senior

Pete was always ready to give the other team an argument. He had a reputation for making amazing shots, some of which even amazed him.

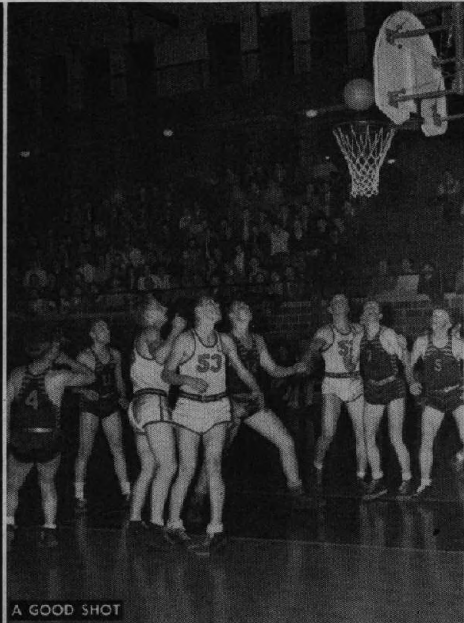
Don Kunkel, senior

Don, playing four years with the team, was always ready to give his all for the Trojans. He played his best ball when the going was tough.

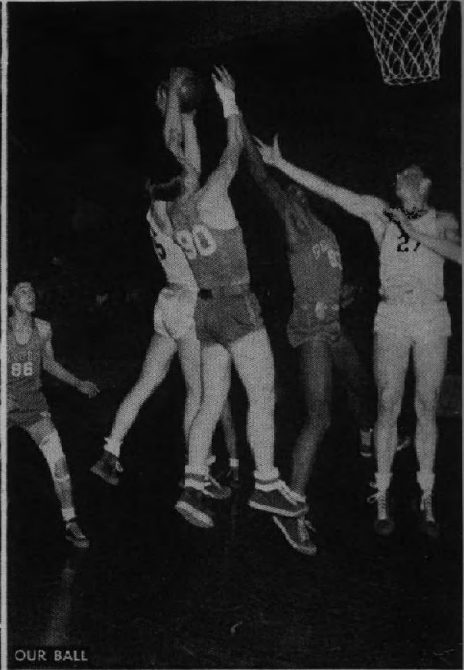




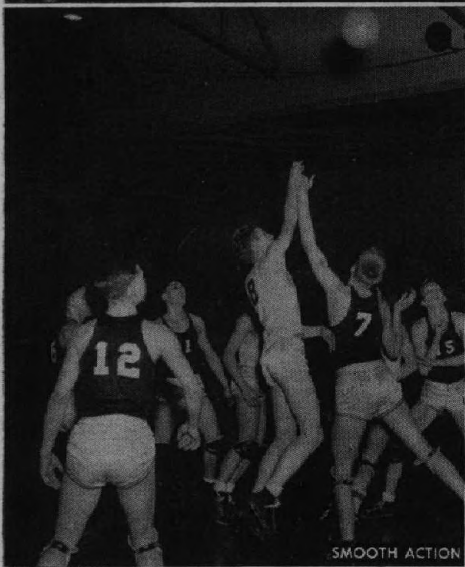
NILEHI REBOUNDS



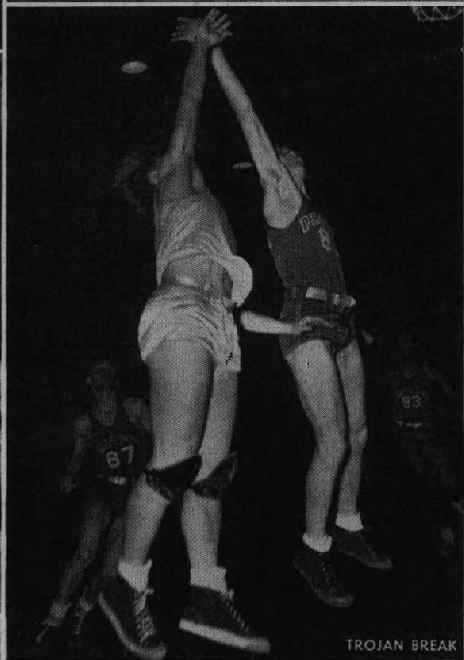
A GOOD SHOT



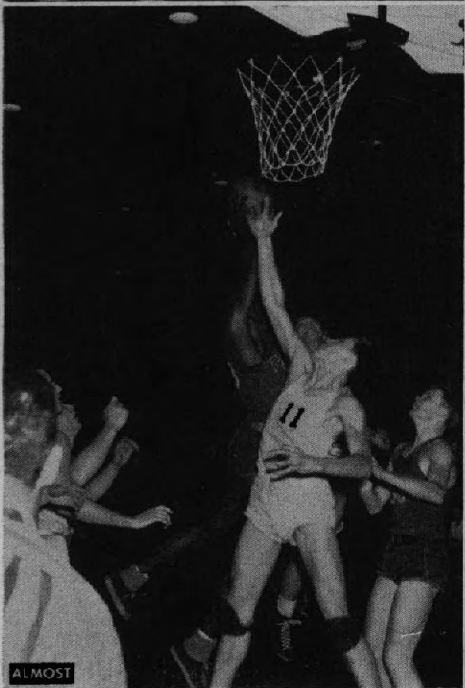
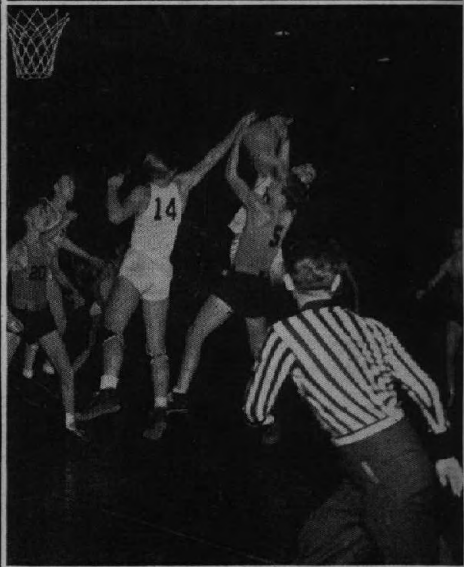
OUR BALL



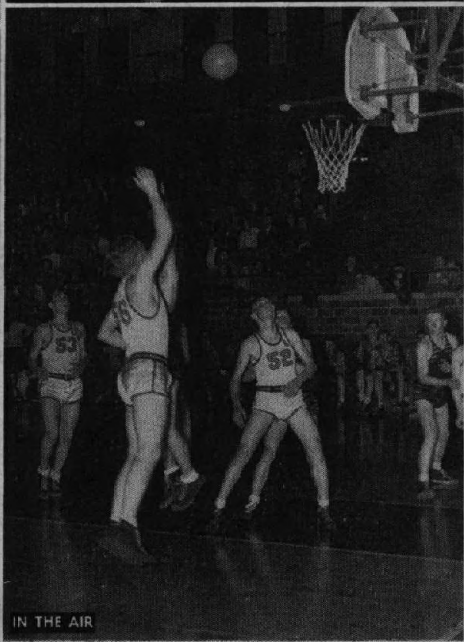
SMOOTH ACTION



TROJAN BREAK



ALMOST



IN THE AIR



BASKET??

Jay Vee Squad

BOTTOM ROW, left to right: Oscar Franson, Howard Siegel, Jim Blessing, Dick Norman, Lee Garner, Ed Kuts, Bob Burke, manager.

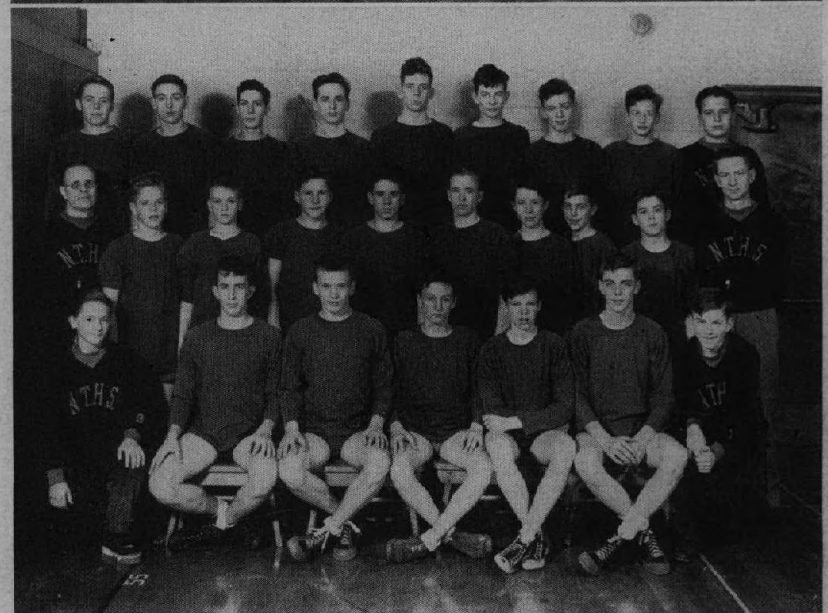
SECOND ROW: Coach Mackey, Tom Black, Henry Trausch, Don Brown, Jerry Heirens, Bob Witte, Don Siegel, Bill Bates, manager.

TOP ROW: Louis Triebold, Ralph Walberg, Dean Whitton, Bill Leeming, Wayne Pihler, Ed Beebe, Marvin Austin, Dick Shiley, Jack Heurlin. Not pictured: Jesse Porter.



Jay Vee Record

NILES	OPPONENTS	
22	New Trier	44
18	Evanston	43
22	Libertyville	26
31	New Trier	33
26	Lake Forest	32
24	Crystal Lake	37
23	Alumni	25
51	Warren	9
29	Leyden	42
29	Libertyville	30
31	Arlington	25
31	Maine	39
19	Woodstock	41
19	Leyden	22
39	Warren	9
29	Crystal Lake	26
23	Lake Forest	22
24	Arlington	32
32	Proviso	23



Freshman Squad

BOTTOM ROW, left to right: Dick Swanson, manager; Lenny Lange, Pete Heimger, Joe Donovan, Harold Siemsen, Fred Brei, Bob Peterson. **SECOND ROW**: Coach Isaacson, Bob Scholow, Bill Blessing, Lou Keesey, Bill Straw, Ed Butterworth, Ted Dolan, George Mueller, Ken La Plant, Coach Hussey. **TOP ROW**: Dick Erickson, Allan Hartig, George Davis, Clyde Schultz, Ashley Craig, Dick Ferris, Jack Coe, Herb Strange, Don Kettel, manager.

Freshman Record

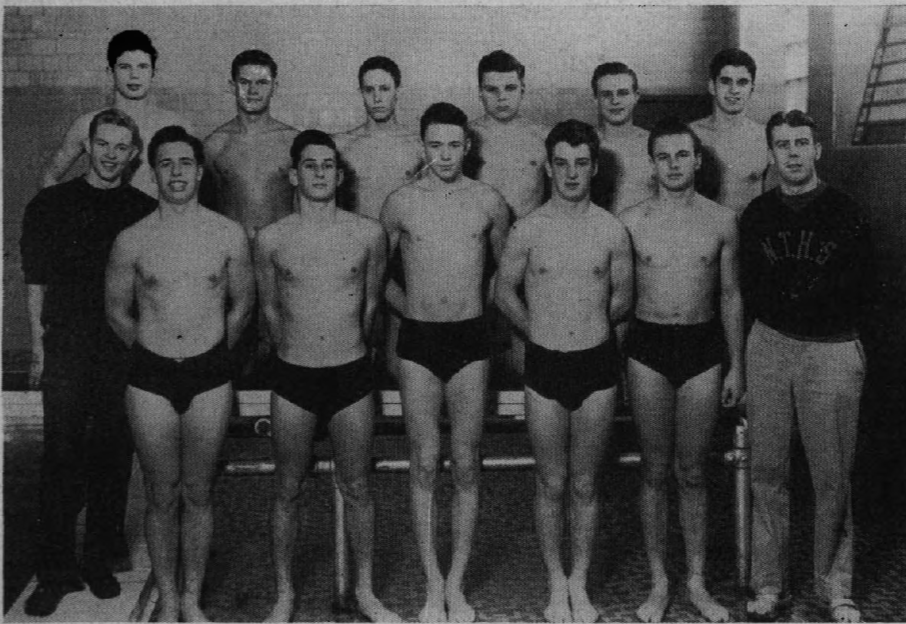
NILES	OPPONENTS	
20	New Trier	23
24	Leyden	22
36	Libertyville	21
23	Leyden	33
36	Arlington	27
26	Evanston	34
39	New Trier	33
53	Highland Park	29
25	Arlington	18
22	Evanston	26

This year's Jay Vee Squad under Coach Robert Mackey raised the Trojan colors high in five games but were trampled in the other seven. Even with this record, and their finishing in a three-way tie for fifth place in the conference, they showed some excellent material for next season's Varsity. The Frosh Five did a little better by taking five games out of their nine game schedule but they were missing the close final scores so typical of the Junior Varsity season.

TROJAN

Varsity Swimmers

BOTTOM ROW, left to right: Al Heim, manager; Lou Kettel, Rudy Schmid, Bob Blessing, Gene Hegarty, Herb Jones, Coach Schubert. TOP ROW: Jim Deily, Phil Knapp, Charles Wagstaff, Louis Hilfer, Howard Robbins, Jerry Dahm. NOT PICTURED: George McCormack.



Frosh-Soph Swimmers

BOTTOM ROW, left to right: Glenn Meyer, Bob Lindahl, Roy Holmes, Dick Provost, Dennis Joyce, Bill Nickel. SECOND ROW: Bill Fischback; Walter Popp, Peter De Vries, Don Ebert, Jim Kennedy, Ray Becker. TOP ROW: Coach Schubert, Bill Walter, Don Zelnick, Del Whitney, Gordon Smale. NOT PICTURED: Roy Nelson, Bill Sanke.



Season Record

VARS.	OPONENTS	FROSH-SOPH
44	22 Morton	21 45
27	39 Waukegan	39 24
38	27 Taft	32 30
25	50 Maine	44 22
37	38 Proviso	45 21
38	36 Steinmetz	34 31
23	52 Highland Park	45 21
28	38 Steinmetz	32 29
29	46 Proviso	47 19
28	47 Waukegan	41 25
29	46 Maine	30 36
49	26 Taft	28 37

The N.T.H.S. Varsity swimmers completed their best season on record by beating Morton, Steinmetz, and Taft twice. Rudy Schmid and Bob Blessing smashed school records in back-stroke and breast-stroke. Also under Mr. Schubert, the Junior Varsity did nearly as well by beating Morton, Maine, and Taft.

The four boys on the opposite page, along with Lou Kettel, Nilehi crawl star, led the Trojans on to their successful season.

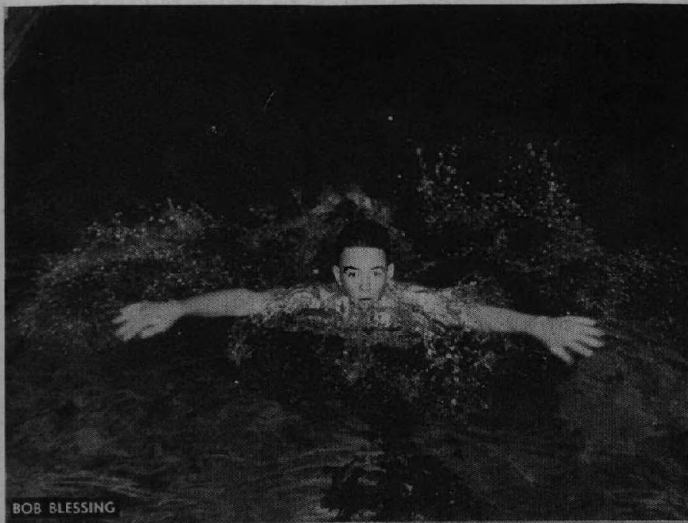
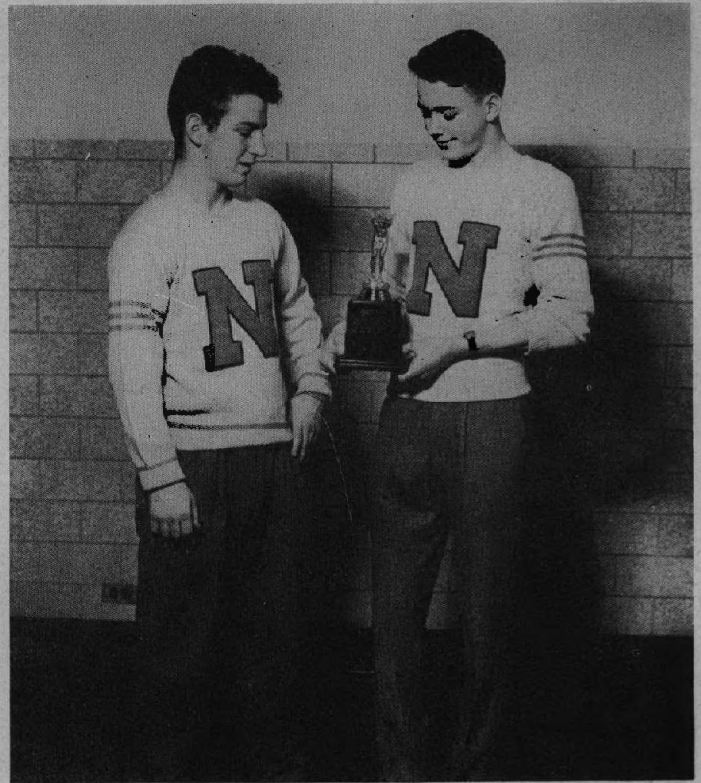
SWIMMERS

Most Valuable

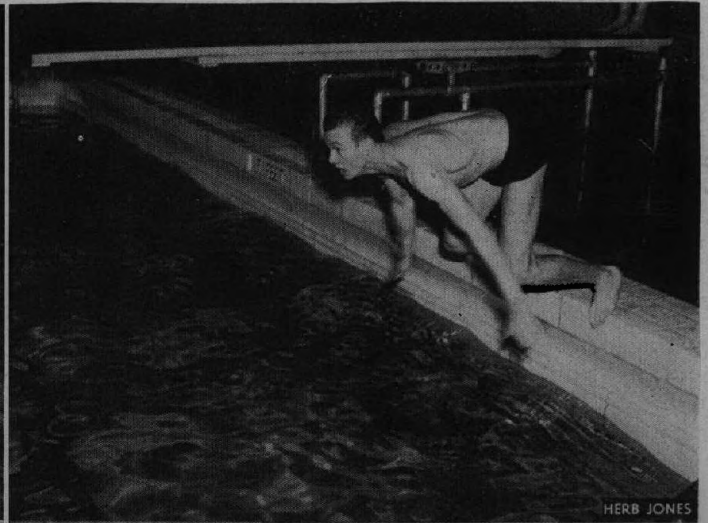
BOB BLESSING was voted Most Valuable Swimmer by his team-mates for the sterling quality of his work. After breaking the 100-yard breast stroke record in the first meet of the season, he went on to break his own record four more times, the last being at the State meet at New Trier high school. Bob did this at a clip of 1:14.5 placing fourteenth in the state.

Honorary Captain

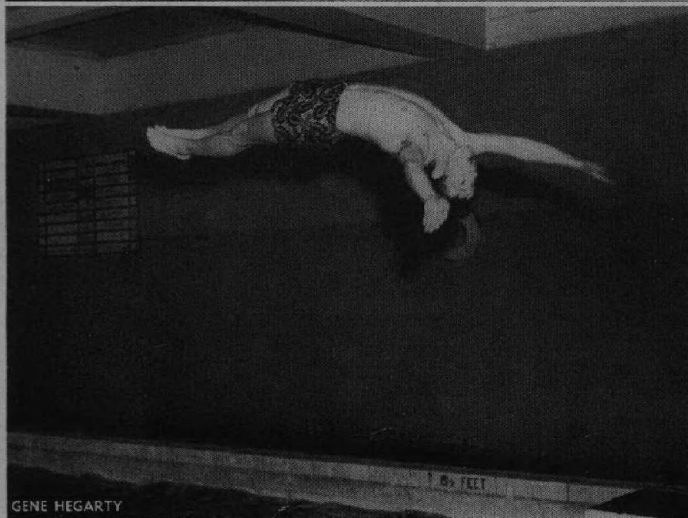
GENE HEGARTY, because of his stalwart support throughout the season, was elected Honorary Captain by the squad. A hard worker, he was always striving for something better. Because of his exceptional skill as a diver and his all-round working ability, Gene placed sixth in the state diving contest.



BOB BLESSING



HERB JONES



GENE HEGARTY



RUDY SCHMID

BASEBALL

BOTTOM ROW, left to right: Bill Bierbaum, Ed Soergel, Don Brown, Don Biehn, Don Olson, Don Kunkel, Dave Straw, Sam Boznos. SECOND ROW: Merrill Taylor, Dick Meyer, Dave Baker, Ted Stockfish, Al Heim, Uno Larson, Bill Comstock, Bob King, Herb Jones, Ed Linskey. TOP ROW: Coach Galitz, Jack Nixon, manager; Oscar Fran-son, George Bussey, Dick Rat-tray, Dick Eichelberg, Dick Norman, Wayne Piehler, Bob Bierbaum, Tom Brophy, Bill Leeming, Jack Herulin, Harold Nelson, Coach Isaacson.



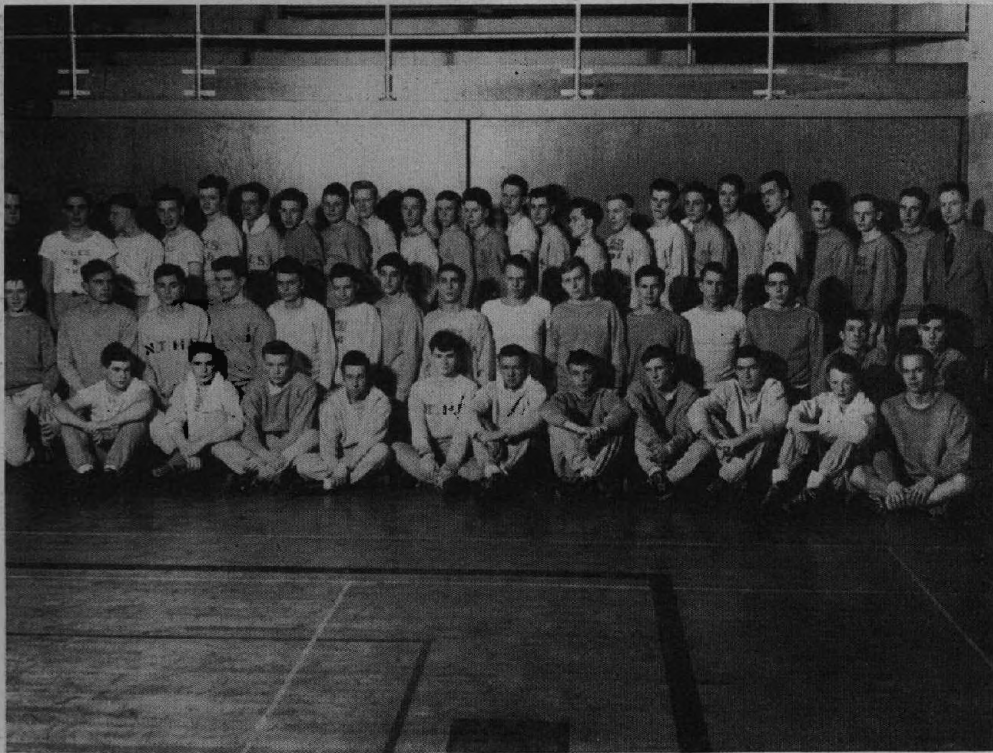
Nilehi's Varsity Nine, Conference champs, are looking forward to bigger and better games on their own field. With the return of the complete infield—Uno Larsen, Don Olson, Bob Bierbaum, Bill Comstock, Don Biehn, and Tom Brophy—this prospect is not too far distant. Coach Galitz states that this year's schedule includes games with Highland Park, Evanston, Warren, Arlington, Leyden, New Trier, Woodstock, and Maine.



GOLF

Mr. Thomas Kiviluoma has bright hopes for a successful season as there are three returning lettermen—Bob Dombrowski, Henry Bobowski, and Gene Hegarty. Nilehi's men of the fairways, with bigger and better turn-outs of both players and audiences, are receiving more backing all the time as are the other spring sportsmen.

KNEELING, left to right: Ken La Plant, Bob Dombrowski, Henry Bobowski, Bill Campbell. STANDING: Stanley Anderson, Ed Such, Gene Hegarty, Pete Reiland, Coach Thomas Kiviluoma.



TRACK

BOTTOM ROW, left to right: Jack Harvey, Jim Bailey, Pete Heiniger, Ray Bolt, Ted Eckert, Bill Kella, Jim Wead, Tom Black, Nick Rollick, Bill Graefen, Bob Farr. **SECOND ROW**: Bill Windmeier, Tom Reed, Dick Minor, Jim Heiniger, Pete Pasch, Dick Ferris, John Boznos, Bob Pearson, Ralph Walberg, Gil Kluesing, Phil Knapp, Lenny Lange, Jim Kennedy, Dick Provost, Bill Grafke. **TOP ROW**: Coach Arthur Ryden, Joe Toth, Jack DeStories, Conrad Cornell, Ward Nipper, Herb Knapp, Bill Bruce, Tom Merle, Don Christensen, Howard Siegel, Don Siegel, Bob Witte, Dick Graf, Phil Brice, Bill McNeill, Bob Nelson, Harold Renis, Joe Wettengel, Laurence Hall, Gene Lewis, Ray Carlson, Bill Permer, George Pasch, Coach Charles Hussey.

The Conference Champ track stars of Nilehi are striving for a repetition of last year's season with the aid of returning lettermen: Phil Brice, George Pasch, Howard Siegel, Bob Pearson, Bill Permer, Joe Wettengel, Bob Farr, Jim Heiniger and Bob Witte. Niles should be well represented in high jumping, pole vaulting, broad jumping, shot put, discus, hurdles, dashes, distance, and relays. Coaches Charles Hussey and Arthur Ryden believe that the Trojans will make a good showing under their own arc-lights in the Northeast Conference Track Meet.

CROSS COUNTRY

Under the guidance of Coach Ryden, Nilehi has this year attempted to revive Cross Country as a high-school sport. Coach Ryden built up his small but spunky squad from all new material, with none of last year's track distance men. As there was no definite conference, the meets had to be arranged separately with each school. The award winners who led the team to victory in the Triangular Cross Country Meet were Joe Toth, Don Zetnick, and Bill Hutchings. Other hard-running "harriers" were Bill Grafke, Merrill Taylor, Carl Schrimpf, and Bill Bruce. With a nucleus of returning veterans, next year's squad should carry Trojan colors high in this sport.

KNEELING: Bill Grafke. **STANDING**, left to right: Coach Ryden, Bill Bruce, Dick Graf, Don Zetnick, Merrill Taylor, Joe Toth.



Acknowledgments

The yearbook staff wishes to express its thanks to Nilehi students, faculty, and employees for their friendly interest and cooperation in the production of this book. We sincerely thank our engravers, The Pontiac Engraving Company; our printers, Neely Printing Company, Inc.; and the Root Studio, our official photographers. We must mention in particular the services of Sam Boznos, our staff photographer. Through their combined efforts and cooperation with us, the production of this book has been made possible.