

**NILEHI**

*Reflections*

**1945**

✓ **For Reference**

**Not to be taken from this room**

**Skokie Public Library**  
Skokie, Illinois

—  
Gift of

William W. Meyer, Sr.

# *Nilehi Reflections . .*

Annual  
Pictorial  
Report  
to the  
Community



// Niles Township. School District  
219. East Division //

*Niles Township Community High School*  
SKOKIE, ILLINOIS



Mildred E. Tess  
President  
Skokie

# The Board of Education



Charles N. Miller  
Lincolnwood



Mack D. Falknor  
Morton Grove



Peter Kluesing  
Niles



Ivan Paroubek  
Skokie

To the graduates of 1945:

The members of the Board of Education are proud of you for your accomplishments at Niles Township High School. Your scholarship has been excellent; your public performances have earned the commendation of the community; and your participation in the numerous activities associated with the war has proved your generosity and patriotism.

Throughout your four years of high school, you have made good use of opportunities to be of service to others. Now, as graduation brings you new responsibilities and larger fields of service, may you feel encouraged by the knowledge that you have the heartfelt gratitude of your school and community.

MILDRED E. TESS  
President

Ill.  
373.1731  
N 712  
1945



*A. L. Biehn, A.B., A.M., Ph.D.*

*A Message  
from the  
Superintendent*

For many years the high schools of the nation have served as the "people's colleges." It is here that youth has experienced mental, social, and physical growth; and parents and patrons have enjoyed participation through observation. With each generation the school's functions multiply; its influence spreads; and, as it should, it has become the crossroad of its constituents. Everyone within a community is benefited by the high school. Therefore, everyone should contribute either his time, his talent, or his means to the support of this American institution. Only through the pooling of resources can progress be accelerated.

Niles Township High School, though young in years, is no less anxious to serve its community well, and welcomes every opportunity to contribute to the mental, moral, and physical welfare of young and old alike. To this end, let us continue.

**7700382**

A. L. BIEHN  
*Superintendent*

# Faculty



**Albert W. H. Ashworth**  
Geography, Civics, History  
*A.B., Valparaiso University*



**John C. Benette**  
Biology, Photography, Senior  
Adviser  
*B.S., University of Chicago;  
M.A., Northwestern University*



**Adelaide Berry**  
English, French, Scholarships  
*B.A., Indiana University;  
M.A., Radcliffe College;  
Diplome from the Universite de  
Poitiers, France*



**Clyde Wilbur Blanke**  
English, Journalism  
*A.B., Drury College;  
A.M., University of Chicago*



**Bonita Bloxson**  
English  
*A.B., Ball State Teachers College;  
M.A., Northwestern University*



**Clifford W. Collins**  
Band, Orchestra  
*B.Mus., Connecticut National  
School of Music*



**Margaret de Booy**  
Mathematics, Junior Adviser  
*B.S., Northwestern University;  
M.A., Columbia University*



**Ruth B. Esch**  
Dramatics, Radio  
*B.O. and M.O., Artist, Chicago  
School of Expression and  
Dramatic Art*



**Marie Green**  
Bookkeeping, Typing,  
Business Training  
*B.S. and M.A., Northwestern  
University*



**Grace G. Harbert**  
Problems  
*B.S., University of Illinois;  
M.S., University of Minnesota*



**Florence B. Harrison**  
General Science, Biology  
*B.S., South Dakota College;  
Ph.M., University of Wisconsin*

# Faculty



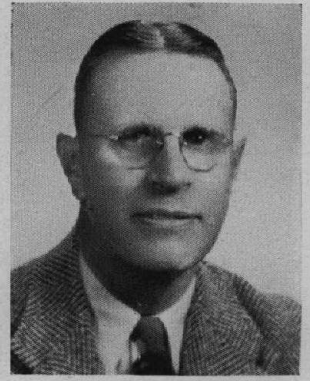
**Dorothy Hinman Hind**  
Mathematics  
*A.B. and A.M., University of Chicago*



**Marvin H. Ihne**  
World History,  
Sophomore Adviser  
*A.B., Illinois College;  
A.M., University of Illinois*



**Ada Immel**  
Shorthand, Business Training  
*A.B., Lawrence College;  
M.A., University of Iowa*



**Harold Isaacson**  
Physical Education, Athletics  
*B.S., Western Michigan State  
Teachers College*



**Helen Johanns**  
Typing, Business Law,  
Office Practice  
*B.E., Whitewater State Teachers  
College;  
M.A., Northwestern University*



**Thomas J. Kiviluoma**  
Mathematics  
*B.E., Northern Illinois State  
Teachers College;  
M.A., University of Illinois*



**Clara A. Klaus**  
Music  
*B.S. and M.S., Northwestern  
University*



**Theresa E. Kranz**  
U. S. History, German  
*B.A. and M.A., University of  
Minnesota*



**Lois Lamberg**  
U. S. History, Civics,  
English  
*B.A., Beloit College;  
M.A., Northwestern University*



**Alice Line**  
Home Economics  
*A.A., Stephens College;  
B.S., University of Nebraska*



**Luther H. Lyndrup**  
Physics, Chemistry,  
Geometry  
*B.S. and M.A., Michigan State  
College*

# Faculty



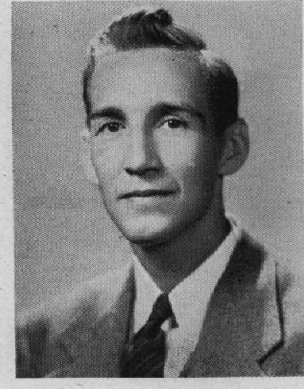
**L. Robert Mackey**  
Electrical, Auto Shop,  
Mechanics  
*B.A. and B.S., Lewis Institute*



**Clement F. Meier**  
Printing, Mathematics  
*Ph.B., De Paul University*



**Louise Myers**  
Library  
*B.S. in L.S., George Peabody  
College*



**Norman G. Rickard**  
Woodwork, Physical Education  
*B.A., Northern Illinois State  
Teachers College*



**Lucille Ronalds**  
English  
*A.B., Mt. Holyoke College;  
M.S., University of Illinois*



**Marjory Ronalds**  
Latin, English,  
Freshman Adviser  
*A.B., Vassar College;  
M.A., Columbia University*



**Doris Sayre**  
English  
*A.B., James Millikin University;  
M.A., University of Illinois*



**Mildred A. Schaefer**  
Physical Education  
*B.P.E., Normal College of the  
American Gymnastic Union;  
B.S. and M.A., De Paul University*



**Robbie Lou Schneider**  
Mathematics  
*B.A., Wellesley College;  
M.A. and M.S., Northwestern  
University*



**Charles W. Selden**  
Industrial Education,  
Vocations  
*B.S. and M.A., University of  
Minnesota*



**Earl Shanabarger**  
General Science,  
World History  
*B.S., Purdue University;  
M.A., Northwestern University*



# Faculty



**Jean F. Small**  
Spanish  
B.A., Bryn Mawr College;  
M.A., Northwestern University;  
Diplome from La Sorbonne, Paris



**Ronald A. VanArsdale**  
Dramatics, Speech, English  
A.B., Butler University;  
M.A., State University of Iowa



**Natalie Wells**  
Physical Education  
B.S., University of Iowa



**John G. Wilkins**  
Art, Mechanical Drawing  
B.S., Kansas State Teachers  
College;  
B.A.E., School of Art Institute,  
Chicago

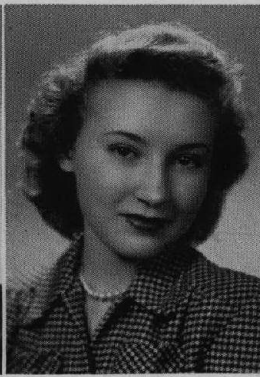
## Office Staff—Custodians—Cafeteria



**Agnes E. Harte**  
Office Manager



**Alice R. Suckow**  
Bookkeeper



**Lorraine Splett**  
Office Secretary



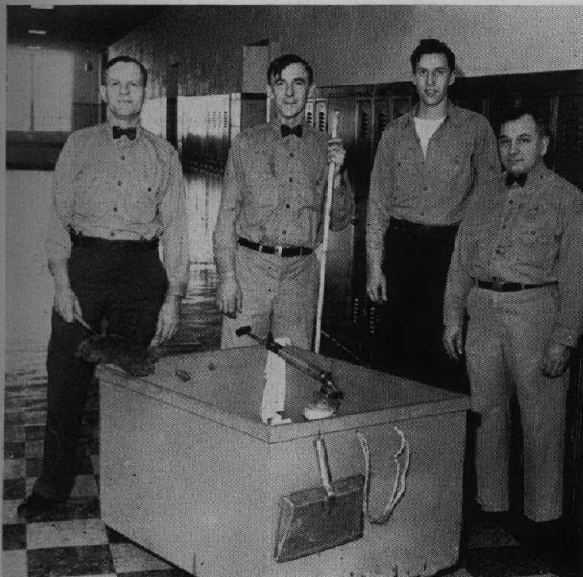
**Dorothy Steward**  
Attendance Clerk



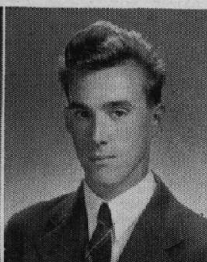
**Thelma S. Cline**  
School Nurse

**CUSTODIANS**, left to right: Mr. Ahrens, Mr. Ide, Mr. Putnam, Mr. Brunke. Not in picture: Mr. Mackey (school engineer), Mr. Boyd, Mr. Kirscht, Mr. Fountaine.

**CAFETERIA**: Mrs. Florence Piastrelli, Mrs. Frieda Harms, Genevieve Noesen, Mrs. Harriet Fiech, Mrs. Esther Fountaine, Mrs. Katie Kestenholz, Mrs. Alice Khuesing. Not in picture: Miss Carrie Schoening, matron.

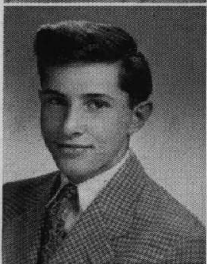


# Seniors of 1945



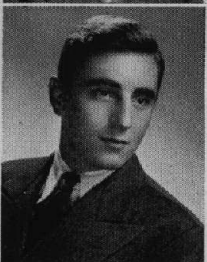
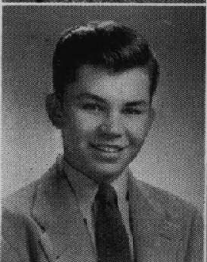
**Shirley Helen Ahrens**  
Homeroom Treasurer 1. G.A.A. 1, 2.  
Girls' Glee Club 1. Style Show 4.

**John A. Aliprandi**  
Basketball 4. Golf 1. Track 4. Band 1.



**Martin Alterini**

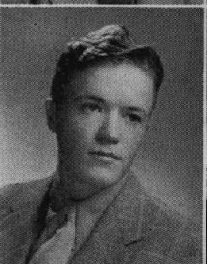
**Arthur Anderson**  
Football Manager 1. Basketball 2, 3, 4.  
Most Valuable Player Award 4.



**Charles Bailey**

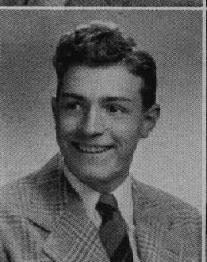
Football 2. Tumbling 3. Newspaper 3.  
Yearbook Staff 3. Junior Prom Committee 3.  
Dance Committee Decorator 3.  
Plays: "Don't Bring the Band" 2.  
"And Came the Spring" 3. "A Little Honey" 4.  
High School Party 2, 3. Dramatics Nights 3, 4.  
Cafeteria Committee 4. Foreign Language Club 2.  
Water Carnival Decorations 3, 4.

**Norman Bailey**  
(Withdrawn)



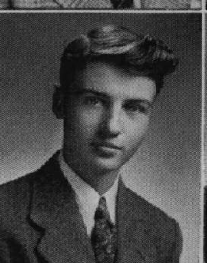
**Edward D. Ballantine**  
Track 3. Homeroom Secretary 1. Foreign Language Club 2, 3. Ushers and Monitors Club 1, 2. Roman Banquet 3.

**Robert Bennett**  
Boys' Glee Club 1, 2.



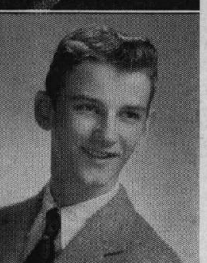
**Fred Bernard**  
Transferred from Taft H.S. 1. Football 2, 3, 4. Baseball 2, 3, 4. Newspaper 4. Cafeteria Committee 4. Photography Club 3. Foreign Language Club 2, 3. Visual Aids Club 3, 4. Roman Banquet 3.

**Rosemary Biederer**  
Transferred from Madonna H.S. 2. G.A.A. 3, 4. Style Show 4.



**Thomas Birong**

**Mars J. Bishop**  
Football 3, 4. Track 4. Gold Pin 4. Silver Pin 3. Bronze Pin 2. Hobo Day King 3. Cafeteria Committee 4. Foreign Club 3, 4. Orchestra 1, 3, 4. Golf 4.



**Nicholas Bogner**  
Football 1, 2, 3, 4. Foreign Language Club 3, 4. Band 1, 2.

**Robert H. Bollow**  
Baseball 1, 4. Basketball 1, 3. Foreign Language Club 2. Homeroom Secretary 1.

# Seniors of 1945



**William R. Bonney**  
Baseball 4.



**Laura Catherine Breckenridge**  
Play: "A Little Honey" 4. Radio 2, 3, Dramatics Nights 3, 4. Homeroom Secretary 1. Foreign Language Club 2, 3, 4. G.A.A. 1, 4. Pep Club 1, 2. Girls' Glee Club 1. Ushers and Monitors Club 1.



**Rosemerry M. Breden**  
Foreign Language Club 4. G.A.A. 1, 2, 3. Girls' Glee Club 1, 2, 3.



**Robert Brod**



**Dolores M. Brooks**  
Junior Prom Committee 3. Cafeteria Committee 4. Foreign Language Club 2. P.A.P. 4. G.A.A. 1, 2. Band 3, 4. Girls' Glee Club 1, 2. Flute Quartet 3. Flute Trio 4. Senior Tea 4. Eighth Grade Night 3. Music Award 4. Spring Concert 1, 2, 3, 4.



**Corrine P. Brunger**  
Cafeteria Committee 4. Style Show 1, 2.



**Lois E. Buhrke**  
Transferred from New Trier H. S. 1.



**Betty Burns**  
Bowling 1. Major Dramatic Certificate 4. Dance Committee Decorations 2, 3. Junior Prom Committee 3. Plays: "Old Doc" 2, "A Little Honey" 4. Dramatics Night 3. Reflections Revelry 3. Forum 3. Homeroom Stamp Chairman 3. Cafeteria Committee 4. Foreign Language Club 2. G.A.A. 1, 2, 4. Cheerleaders 1, 2, 4. Girls' Glee Club 1. Water Carnival 3, 4. Twirling 1, 2.



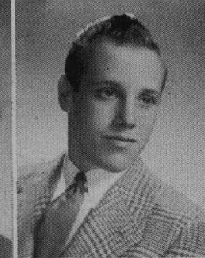
**Donald Busscher**  
Attended St. Francis H.S. 3. Football 1, 2. Horseback Riding 1, 2. Pep Club 1, 2.



**Patricia Canty**  
Archery 3. Tennis 3. Junior Prom Committee 3. Plays: "My Heart Beats for You" 1, "Old Doc" 2, "And Came the Spring" 3, "A Little Honey" 4. Radio 2, 3. Dramatics Nights 1, 2, 3, 4. Junior Council President 3. Cafeteria Committee 4. Foreign Language Club 1, 2, 3, 4. G.A.A. 1, 2, 3, 4. Pep Club 1, 2. Cheerleaders 1. Girls' Glee Club 1. Water Carnival 3. Reflections Revelry 4.



**Nancy Cates**  
Bowling 1. High School Party 2, 3. Homeroom Secretary 1, 4. Cafeteria Committee 4. Foreign Language Club 3, 4. G.A.A. 1, 2, 3, 4. Pep Club 1, 2. Cheerleaders 1, 2. Girls' Glee Club 1, 2. Choir 3, 4. Style Show 4.



**Donald Christensen**  
Football 1, 2, 3, 4. Captain 4. Baseball 1. Swimming Team 1, 2, 3. Synchronized Swim 1, 2, 3. Junior Prom Committee 4. Dance Committee 4. Forum 2, 4. President 4. Cafeteria Committee 4. Foreign Language Club 2, 3. Pep Club 1, 2. Boys' Glee Club 1. Choir 2, 3. Water Carnival 1, 2, 3, 4. Reflections Revelry 4. Weight Lifting 4. Eighth Grade Night 2, 3. Parents' Night 2.



**Marilyn Clark**  
Bowling 1, 2. High School Party 2. Citizens of Tomorrow 2. G.A.A. 1, 2, 3. Pep Club 1, 2. Choir 2. Style Show 2, 3, 4. (To graduate in 1946)



**Mary Catherine Clark**  
Junior Prom Committee 3. Dance Committee 3, 4. High School Party 2, 3. Senior Cabinet 4. Forum 1. Homeroom Secretary 1, 2. Treasurer 3. G.A.A. 1, 2, 3, 4. Pep Club 1, 2. Girls' Glee Club 1, 2. Choir 3, 4. Girls' Sextet 4. Double Quartet 4. Style Show 2.

# Seniors of 1945

## William Clynes

Attended Huntington Beach Union H.S.  
3. Football 1, 4. Swimming Team 1, 2,  
4. Synchronized Swim 1, 2, 4. Sopho-  
more Senate 2. Water Carnival 1, 2, 4.  
Homeroom Vice-President 2.

## Leonard J. Conrad

Boys' Glee Club 2.

## Bernadette Creaney

Bowling 2. G.A.C.S. 2. G.A.A. 1, 2, 3,  
4. Ushers and Monitors Club 2. Water  
Carnival 3. Style Show 3.

## Fritz Daiberl

Forum 4. Ushers and Monitors Club 2.  
Boys' Glee Club 1.

## Robert Dammann

Bronze Pin 2. Senior Cabinet 4. Foreign  
Language Club 2, 3. Visual Aids 4.  
Band 3, 4. Orchestra 3, 4. Reflections  
Revelry 3, 4. Roman Banquet 3.

## Emerson Dean

Major Athletic Award 2, 3, 4. Most Val-  
uable Player Award 4. Football 1, 2, 3,  
4. Baseball 1, 3, 4. Swimming Team 3.  
Synchronized Swim 4. Tumbling 3.  
Forum 2. Homeroom President 1, 4.

## Virginia Didier

Gold Pin 4. Silver Pin 3. Bronze Pin 2.  
Cafeteria Committee 4. Foreign Lan-  
guage Club 3, 4.

## William Comer

Baseball 1, 2. Basketball 2. Homeroom  
President 4. Pep Club 1, 2.

## Paul Corso

Track Manager 1. Homeroom Secretary  
1. Cafeteria Committee 4. Ushers and  
Monitors Club 4. Pep Club 1, 2. Boys'  
Glee Club 1. Choir 2.

## Helen M. Dahm

Bowling 1, 2. G.A.C.S. 2. G.A.A. 1, 2,  
3, 4. Ushers and Monitors Club 2. Style  
Show 4.

## Elaine M. Dall

Transferred from Sullivan H. S. 2.  
Synchronized Swim 3. First Aid 2.  
Yearbook Staff 3. Junior Prom Com-  
mittee 3. High School Party 2, 3. Citizens  
of Tomorrow 2. Hobo Day Queen 3.  
Foreign Language Club 2, 3. G.A.A.  
2, 3, 4. Ushers and Monitors Club 2.  
Pep Club 2. Girls' Glee Club 2. Choir  
3, 4. Mixed Chorus 2. Minor Music  
Award 3. Major Music Award 4. Eighth  
Grade Night 2, 3, 4. Roman Banquet 3.

## Marilyn Lelia Davis

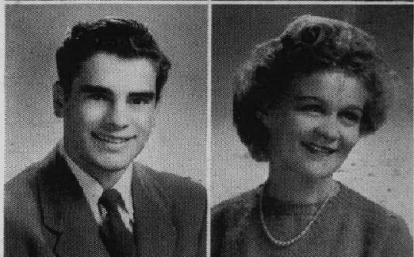
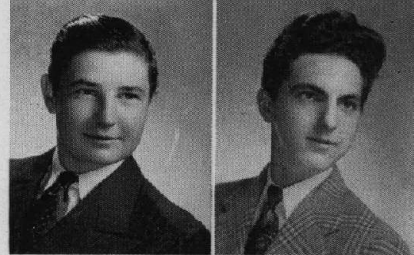
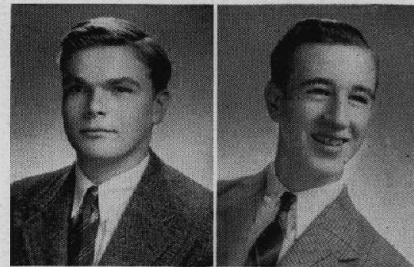
Bowling 1. Plays: "Old Doc" 2, "A  
Little Honey" 4. Sophomore Senate 2.  
Foreign Language Club 3, 4. Water  
Carnival 2. Homeroom President 4.

## JoAnne Detweiler

Bowling 1, 2. Junior Prom Committee  
3. Dance Committee 3, 4. Play: "And  
Came the Spring" 3. Foreign Language  
Club 2, 3. G.A.A. 1, 2, 3, 4; Play  
Day 1. Pep Club 1, 2. Nilehilite Com-  
mittee 4. Student Activities Committee  
4. Dramatics Nights 3, 4.

## Mary Frances Dietsch

Horseback Riding 1. First Aid 2. Red  
Cross 4. Yearbook Staff 3, 4. Homeroom  
Secretary 1. Foreign Language Club 2,  
3. Pep Club 2. Nilehilite Committee 4.  
Color Guard 2, 3. Style Show 4. Reflec-  
tions Revelry 3, 4. Young America  
Answers 4. Cafeteria Committee 4.



# Seniors of 1945

## Phillips M. Egebrecht

Transferred from Maine Township H.S. 1. Synchronized Swim 4. P.A.P. 4. Visual Aids 4. Boys' Glee Club 2. Choir 2, 3, 4. Boys' Octet 2. Double Quartet 4. Water Carnival 4.

## Ann Erickson

Senior Cabinet 4. Forum 2, 3. Homeroom Secretary 2, 4. Dance Committee 4. Style Show 4. G.A.A. 1, 2, 3, 4. Freshman Literary Club 1. Foreign Language Club 2, 3.

## Jean Faulmann

Life Saving 4. Dance Committee 1. Homeroom Vice-President 4. Cafeteria Committee 4. Foreign Language Club 2, 3. G.A.A. 1, 2, 3, 4. Pep Club 1, 2. Style Show 4. Freshman Literary Club 1. Eighth Grade Night 1. Parents' Night 2.

## Frances Franson

Archery 3. Forum 1, 2. Cafeteria Committee 4. G.A.A. 1.

## Ada Frederick

Transferred from Evanston H.S. 1. Junior Council 3. Cafeteria Committee 4.

## Don Frederickson

(Withdrawn)

## Charles L. Gille

Foreign Language Club 3. Boys' Glee Club 1, 2. Boys' Octet 2.

## Harold Engebretson

Football 1, 2, 4. Track 1, 4. Cafeteria Committee 4. Boys' Glee Club 1, 2.

## Robert Erickson

(Withdrawn)

## Sally V. Fjellman

Synchronized Swim 1. Plays: "Old Doc" 2, Christmas Play 2, "A Little Honey" 4. Radio 3. High School Party 3. Dramatics Nights 1, 2, 3, 4. Senior Cabinet 4. Forum 2. G.A.A. 1, 2, 3, 4; Play Day 4, Camp 3. Pep Club 2. Leaders Club 4. Student Activities Committee 4. Girls' Glee Club 1. Water Carnival 1, 4.

## Helen Flieger

Gold Pin 4. Silver Pin 3. Bronze Pin 2. Cafeteria Committee 4. Foreign Language Club 2, 3. Girls' Glee Club 1. Style Show 1, 4. Parents' Night 2, 3. Student Activities Committee 4. Freshman Literary Club 1. Water Carnival 4.

## June Lorraine Fredrichs

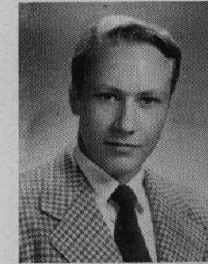
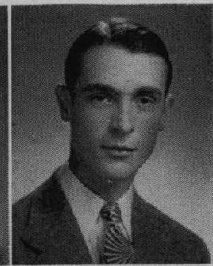
Cafeteria Committee 4. Girls' Glee Club 1, 2. Choir 3, 4. Style Show 2, 3.

## Jay Gallas

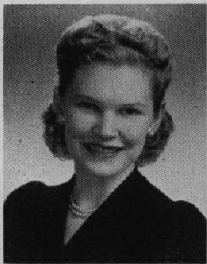
Transferred from Northwestern Military Academy 2. Football 4. Track 3. Tumbling 3. Photography Club 3. Foreign Language Club 3.

## Shirley Gregor

Red Cross Volleyball 4. First Aid 2. Gold Pin 4. Silver Pin 3. Bronze Pin 2. Yearbook Staff 4. Junior Prom Committee 3. Christmas Play 2. Radio 4. Dramatics Nights 4. Foreign Language Club 2, 3. G.A.A. 1, 2, 3, 4; Play Day 4, Camp 3. Leaders Club 3, 4. Color Guard 2, 3. Water Carnival 4. Freshman Literary Club 1. Parents' Night 2, 3, 4. Roman Banquet 3.



# Seniors of 1945

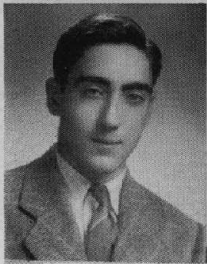


**Irene Gross**

Cafeteria Committee 4. Nilehilite Committee 4. Style Show 2, 4.

**Shirley E. Grosse**

Cafeteria Committee 4. G.A.A. 1, 2. Style Show 4.



**La Vern O. Grover, Jr.**

Cafeteria Committee 4. Nilehilite Committee 4. Band 1, 2, 3, 4.

**Dorothy G. Gustafson**

Synchronized Swim 3, 4. Gold Pin 4. Silver Pin 3. Bronze Pin 2. Yearbook Staff 3. Minor Music Award 3. Major Music Award 4. High School Party 2, 3. Eighth Grade Night 2, 3, 4. Parents' Night 2, 3, 4. Homeroom Secretary 1. Stamp Chairman 2, 3, 4. Foreign Language Club 3, 4. Representative 3. G.A.A. 1, 2, 3, 4; Play Day 1, 4. Camp 1. Leaders Club 3, 4. Music Club President 4. Girls' Glee Club 1. Choir 2, 3, 4. Girls' Sextet 2, 3. Double Quartet 4. Accompanist 1, 2. Water Carnival 1, 2, 3. Style Show 1. Freshman Literary Club 1. Bulletin Board Committee Chairman 4.



**Alvina Hachmeister**

Foreign Language Club 2. G.A.A. 1, 3, 4.

**Lorraine Hannemann**

G.A.A. 1, 2, 3. Style Show 2, 4.

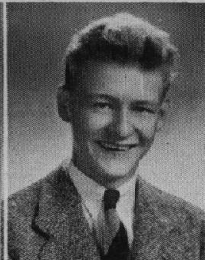
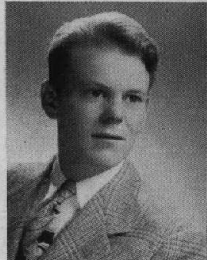


**Lorryne Hansen**

Transferred from Schurz H.S. 1. G.A.A. 2, 3, 4. Pep Club 2. Student Activities Committee 4. Girls' Glee Club 2. Choir 3, 4. Style Show 3, 4.

**Wayne Prescott Hansen**

Band 1, 2, 3, 4. Orchestra 3. Major Music Award 4.

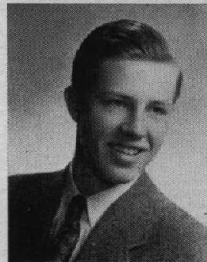


**William Harris**

Football 1. Basketball 1, 4. Newspaper 4. Foreign Language Club 2. Ushers and Monitors Club 2. Student Activities Committee 4. (Withdrawn)

**Robert J. Hartney**

Baseball 1. Swimming Team 1, 3, 4. Synchronized Swim 1. Forum 1, 2. Homeroom President 3, 4. Sophomore Senate 2. Foreign Language Club 2, 3. Pep Club 2. Water Carnival 1. Weight Lifting 4. Paper Salvage Committee 4. Parents' Night 2. Dance Committee 4.

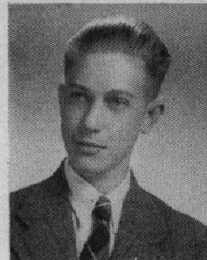


**Edmund Heartstedt**

Football 1, 2, 3, 4. Basketball 1, 2, 3, 4. Tumbling 3. Sophomore Senate 2. Photography Club 3, 4.

**David R. Hawkinson**

Football 1. Baseball 1. Homeroom President 1. Cafeteria Committee 4.



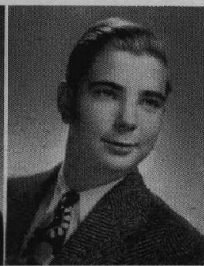
**Richard Hedstrom**

Transferred from Sullivan H.S. 2. Baseball 4. Bronze Pin 3. Silver Pin 4. Cafeteria Committee 4. Golf 4.

**Geraldine Henberger**

Bowling 1, 2. Archery 3. Cafeteria Committee 4. Photography Club 3. Tennis 3.

# Seniors of 1945



**Patricia Henrici**

Cafeteria Committee 4.

**Kenneth Hoffman**

Band 2, 3.

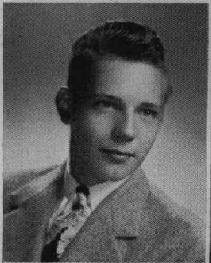


**Marilyn June Horndasch**

Archery 3. Homeroom President 1. Foreign Language Club 3, 4. G. A. A. 1, 2, 3, 4. Style Show 4.

**Barbara Horton**

Bowling 2. G. A. C. S. 2. Newspaper 3, 4. Yearbook Staff 4. Junior Prom Committee 2, 3. Dance Committee 2, 3, 4. Forum 4. Foreign Language Club 2, 3. G.A.A. 2, 3, 4; Play Day 3. Pep Club 1, 2. Cheerleaders 2, 3, 4. Parents' Night 3. Water Carnival 3, 4. Yearbook Staff 3, 4. Eighth Grade Night 3. Red Cross Volleyball 4.



**Albert E. Huber**

Football 1, 2, 4. Swimming Team 1. Junior Council 3. Cafeteria Committee 4. Photography Club 4.

**Paul Jacobs**

Football 1, 4. Baseball 1, 4. Basketball 1. Track 3. Weight Lifting 4. Forum 3, 4. Foreign Language Club 2, 3. Boxing 4. Pep Club 2.



**Hildegard Helen Jarosch**

Yearbook Staff 3, 4. Business Manager 3. Junior Prom Committee 3. Dance Committee 4. Senior Cabinet President 4. Forum 2, 3. Foreign Language Club 3, 4. Board 3. G. A. A. 2, 3, 4. Pep Club 1, 2. German Club 3, 4. Secretary 4. Girls' Glee Club 1. Choir 2. Style Show 3, 4. Reflections Revelry 3, 4. Chairman 3. Homecoming Pep Assembly Chairman 4. High School Party 2. Gold Pin 4. Silver Pin 3. Bronze Pin 2. Parents' Night 2.

**Marion Kay Jenetten**

Forum 1. Homeroom Secretary 1. Cafeteria Committee 4. Foreign Language Club 2. G. A. A. 1, 2, 3, 4.



**Dolores Willa Johnson**

Transferred from Senn H. S. 2. Silver Pin 4. Bronze Pin 3. Newspaper 3. Yearbook Staff 3. Junior Prom Committee 3. Forum Secretary 4. Homeroom Vice-President 2. Sophomore Senate 2. Foreign Language Club 3, 4. G. A. A. 2, 3, 4. Pep Club 2. Junior Council 3.

**Ruth Jones**

Archery 3. Cafeteria Committee 4. G. A. A. 1, 2, 3, 4. Ushers and Monitors Club 4. Style Show 4.



**Marion Kartheiser**

Transferred from Mount St. Joseph Academy 3. Cafeteria Committee 4. G. A. A. 4.

**Therese C. Keegan**

G. A. A. 2. Play: "Don't Bring the Band" 2. Dramatics Night 2. Forum 1, 3. Homeroom Secretary 1. Stamp Chairman 2. Foreign Language Club 2. G. A. A. 1, 2, 3; Camp 2. Pep Club 2. Style Show 2. Tumbling 2.



**Mary Louise Kendall**

Life Saving 2. Bowling 2. Junior Prom Committee 3. Dance Committee 4. Junior Council 3. Forum 2. Homeroom Treasurer 1. Secretary 4. Cafeteria Committee 4. Photography Club 3. Foreign Language Club 1, 2, 3. G. A. A. 1, 4. Pep Club 2. Freshman Literary Club 1. Minute Man Chairman 4. Roman Banquet 1.

**John C. Kircher**

Orchestra 1, 2, 3.

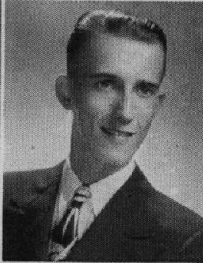
# Seniors of 1945



**Katherine Naslund**  
Cafeteria Committee 4. Style Show 3.

**Shirley Nellessen**

Bowling 2. Bronze Pin 3. Forum 2.  
Cafeteria Committee 4. G. A. A. 1, 2.  
Nihilite Committee 4. Style Show 2,  
3, 4.



**Mary Jane Nelson**

Tennis 4. G. A. C. S. 2. Bronze Pin 4.  
Dance Committee 1, 2, 3, 4. Plays:  
"Old Doc" 2, "And Came the Spring"  
3, "A Little Honey" 4. Radio 2, 3.  
High School Party 2, 3. Dramatics  
Nights 2, 3, 4. Homeroom President 1.  
Stamp Chairman 2. G. A. A. 1, 2, 3, 4;  
Play Day 2. Camp 1, Executive Board  
1, 2, 3, 4. Freshman Literary Club 1.  
Minor Dramatics Certificate 2. Major  
Dramatics Certificate 4. Foreign Lan-  
guage Club 2. Student Activities Com-  
mittee 3.

**Raymond Nelson**

Football Manager 3, 4. Track Manager  
3. Cafeteria Committee 4. Foreign Lan-  
guage Club 2, 3. Visual Aids Club 4.  
Pep Club 1, 2. Eighth Grade Night 3.  
Parents' Night 2, 3, 4. Orchestra 1, 2,  
3, 4. Music Award 3, 4.



**Ralph Nettland**

Junior Prom Committee 3. Plays: "And  
Came the Spring" 3, "The Valley of  
Ghosts" 3, "A Little Honey" 4, "A  
Cup of Tea" 4. Radio 2, 3. Dramatics  
Nights 2, 3, 4. Major Dramatics Cer-  
tificate 4. Cafeteria Committee 4. Ushers  
and Monitors Club 2. Nihilite Com-  
mittee 4. Eighth Grade Night 3. Par-  
ents' Night 2, 3, 4. Reflections Revelry  
3. Football Manager 3. Foreign Lan-  
guage Club 2, 4.

**Helen Hazel Neumann**

G. A. A. 1, 2. Girls' Glee Club 2. Style  
Show 4.

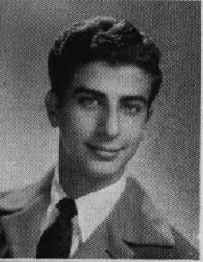


**Charles E. Olsen**

Football 1, 2. Ushers and Monitors  
Club 2, 3. Cafeteria Committee 4.  
Golf 4.

**Rae Rita Olson**

Bronze Pin 3. Junior Prom Committee  
3. Senior Cabinet 4. Forum 1. Home-  
room President 2. Cafeteria Committee  
4. Photography Club 2. Foreign Lan-  
guage Club 2, 3, 4. Representative 4.  
G. A. A. 1, 2, 3, 4; Play Day 1. Pep  
Club 1. "Helen of Troy" 3. Style Show  
4. Freshman Literary Club 1. Young  
America Answers 4.

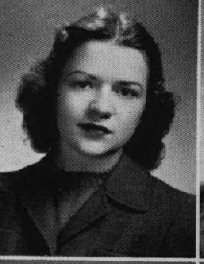


**Beverly Ann Pearson**

Transferred from North Park Academy  
2. Silver Pin 3. Gold Pin 4. Red Cross  
Volleyball 4. Yearbook Staff 4. Junior  
Prom Committee 3. Plays: "And Came  
the Spring" 3, "A Cup of Tea" 4.  
Radio 3. Orations 4. Dramatics Nights  
3, 4. Cafeteria Committee 4. G. A. A.  
3, 4. Student Activities Committee 4.  
Girls' Glee Club 3. Choir 4. Double  
Quartet 4. Water Carnival 4. Eighth  
Grade Night 4. Minor Music Certificate  
4. Major Dramatics Certificate 4.

**Joseph Pennacchia**

Football 1. Baseball 1, 2, 4. Basketball  
1. Homeroom Vice-President 1. Foreign  
Language Club 2. P. A. P. 2. Ushers  
and Monitors Club 2. Pep Club 1, 2.

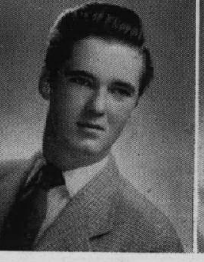


**Nancy Lucile Perrin**

Synchronized Swim 3, 4. Life Saving 1,  
2. G. A. C. S. 2. First Aid 2. Yearbook  
Staff 3, 4. Junior Prom Committee 3.  
Dramatics Nights 3. Foreign Language  
Club 2, 3. Roman Banquet 3. G. A. A.  
1, 2, 3, 4; Play Day 3. Camp 2. Ushers  
and Monitors Club 1. Color Guard 2, 3.  
Water Carnival 1, 2, 3, 4. Style Show 1.  
Reflections Revelry 3. Senior Cabinet 4.  
Freshman Literary Club 1.

**Edward Peter**

(Withdrawn)



**Walter Piehler**

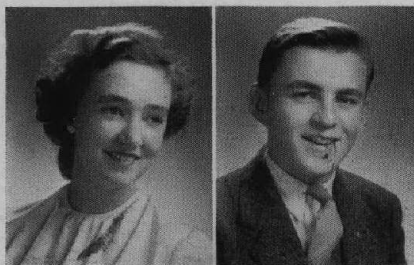
Baseball 1, 2. Tumbling 3. Photography  
Club 3. Weight Lifting 3. Eighth Grade  
Night 2.

**Lois Jean Pierce**

Tumbling 2. Homeroom President 2.  
Treasurer 3. G. A. A. 1. Pep Club 1.  
Student Activities Committee 4. Twirl-  
ing 1, 2, 3. Water Carnival 3. Indus-  
trial Education 4.



# Seniors of 1945



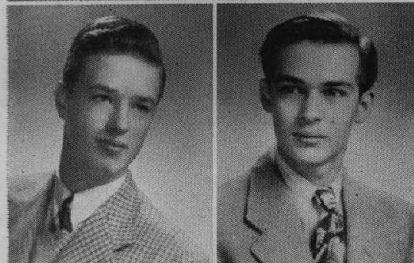
**Margery Plummer**

High School Party 2, 3. Citizens of Tomorrow 2. Cafeteria Committee 4. Foreign Language Club 2, 3. Girls' Glee Club 1, 2. Choir 2, 3. Girls' Sextet 4. Ushers Club 4. Eighth Grade Night 3. Minor Music Award 3. Major Music Award 4. Roman Banquet 3.



**Marilyn Proesel**

Cafeteria Committee 4.



**Ernest G. Reimann**

Baseball 1, 4. Basketball 1, 2, 3, 4. Junior Prom Committee 3. Senior Cabinet 4. Forum 3. Homeroom President 1, Vice-President 2. Sophomore Senate 2. Cafeteria Committee 4. Foreign Language Club 2. Ushers and Monitors Club 4. Parents' Night 2, 3, 4. Eighth Grade Night 2.



**Ernest Risinger, Jr.**

Paper Salvage 4. Homeroom Vice-President 1.



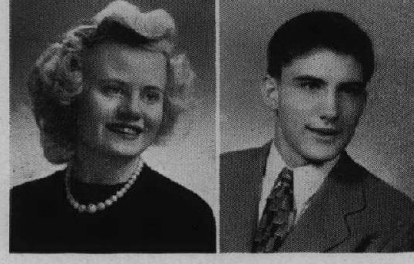
**Esther Roden**

Tumbling 3. Homeroom Secretary 3. Foreign Language Club 2, 3, 4. G. A. A. 2, 3. Pep Club 2.



**Shirley Jeanne Rohrer**

Life Saving 1. Junior Red Cross Council 4. Red Cross Class 4. Bronze Pin 3. Newspaper 3, 4. Yearbook Staff 3, 4. Junior Prom Committee 3. Dance Committee 4. Reflections Revelry 3, 4. Chairman 4. Eighth Grade Night 1. Parents' Night 3. Homeroom Secretary 2. Foreign Language Club 2, 3. Girls' Glee Club 1, 2, 3, 4. Water Carnival 1. Style Show 1, 4. Senior Tea Chairman 4. Forum 4.



**Dorothea Sandberg**

Gold Pin 3. Silver Pin 3. Bronze Pin 2. Plays: "Old Doc" 2, "The Valley of Ghosts" 3. Dramatics Nights 2, 3. Student Activities Committee 4. Girls' Glee Club 1. Parents' Night 4.

**Thomas P. Podraza**

Christmas Play 1. Homeroom Stamp Chairman 2. Foreign Language Club 2. Reflections Revelry 3, 4. Boys' Glee Club 3. Choir 4.

**Mary Ellen Racine**

Transferred from St. Scholastica H. S. 1. Newspaper 3. Junior Prom Committee 3. Plays: "Old Doc" 2, Christmas Play 2, "A Little Honey" 4. Radio 2, 3. Parents' Night 2, 4. Reflections Revelry 3. Yearbook Staff 3. Dramatics Nights 2, 3, 4. Junior Council 3. Homeroom Secretary 2, 4. Cafeteria Committee 4. Foreign Language Club 2, 3. G. A. A. 2, 3, 4. Student Activities Committee 3. Water Carnival Narrator 2, 3, 4. Style Show Narrator 2, 3, 4. Badminton 4. International Night Narrator 2. Major Dramatics Certificate 4. Minor Dramatics Certificate 2.

**Hunter L. Reynolds**

Swimming Team 1, 2, 3. Synchronized Swim 1. Track 4. Homeroom Treasurer 1. Cafeteria Committee 4. Water Carnival 1.

**Earlene Georgette Robinson**

Transferred from Hughes H. S. 2. Synchronized Swim 3, 4. Cafeteria Committee 4. Ushers and Monitors Club 3. Choir 3, 4. Water Carnival 3. (Withdrawn)

**Rupert Roegner**

Baseball 1, 2, 4. Swimming Team Manager 3, 4. Junior Prom Committee 3. Plays: "And Came the Spring" 3, "The Valley of Ghosts" 3, "A Little Honey" 4. Homeroom Vice-President 3. Cafeteria Committee 4. Reflections Revelry 3. Foreign Language Club 2. Parents' Night 2, 3, 4. Student Activities Committee 3. Dramatics Nights 3. Young America Answers 4.

**Wayne Russell**

**Arthur P. Schmidt**

Football 1, 2, 3, 4. Baseball 1, 2, 3, 4. Homeroom President 2. Photography Club 2. Water Carnival 3. Golf 4.

# Seniors

## Anna May Schmitt

Synchronized Swim 3, 4. Life Saving 4. Gold Pin 4. Silver Pin 3. Bronze Pin 2. Yearbook Staff 3. Dance Committee 1. Homeroom President 4. Cafeteria Committee 4. Foreign Language Club 2, 3, 4. G. A. A. 1, 2, 3, 4; Play Day 4, Camp 3. Water Carnival 3, 4. Freshman Literary Club 1.

## Daniel Silicani

Forum 1. Cafeteria Committee 4. Band 1.

## Betty Sparkman

Silver Pin 4. Bronze Pin 3. Play "Don't Bring the Band" 2. Radio 2. Dramatics Nights 2. Forum 4. Foreign Language Club 2, 3. G. A. A. 1, 2, 4. Pep Club 2. Student Activities Committee 4. Water Carnival 3. Nihilite Committee 4.

## Lilian Sprud

Transferred from Foreman H. S. 1. Play: "The Valley of Ghosts" 3. Dramatics Nights 4. Girls' Glee Club 2. Style Show 3. (To graduate in 1946)

## Thomas Stockenberg

Football 1, 4. Foreign Language Club 2.

## Daniel Sullivan

Cafeteria Committee 4. Ushers and Monitors Club 2. (To graduate in 1946)

## Harold B. Thiell

Transferred from Senn H. S. 3. Cafeteria Committee 4.

## Ann Marie Schirra

Synchronized Swim 1. Tennis 3. Tumbling 2. Archery 3. Badminton 4. Red Cross Volleyball 4. G. A. C. S. 2. Silver Pin 4. Bronze Pin 3. Yearbook Staff 4. Junior Prom Committee 3. Dance Committee 1, 2, 3, 4. King's Court 3. Radio 2, 3, 4. Dramatics Nights 3, 4. Major Dramatics Certificate 4. Junior Council Secretary 3. Homeroom Secretary 2. Foreign Language Club 2, 3, 4. German Club 3, 4. President 3. Roman Banquet 3. G. A. A. 1, 2, 3, 4; Play Day 3, 4. Camp 2. Executive Board 2, 3, 4. Vice-President 3. President 4. Pep Club 2. Cheerleaders 2, 3, 4. Captain 4. Water Carnival 2, 3, 4. Style Show 1. Student Activities Committee 4. Freshman Literary Club 1. Eighth Grade Night 1. Reflections Revelry 4. Minute Man Chairman 4.

## Russell Earl Skallerup

Basketball 1, 2. Track 2, 3, 4. Tumbling 3. Foreign Language Club 3, 4. Band 4. Boys' Glee Club 1.

## Harold Springer

Football 1. Baseball 1, 2, 4. Tumbling 3. Photography Club 3. Ushers and Monitors Club 4. Pep Club 1, 2.

## William L. Stielow

Baseball 1, 2. Gold Pin 4. Silver Pin 3. Bronze Pin 2. Homeroom Vice-President 1. Sophomore Senate 2. Cafeteria Committee 4. Photography Club 3. Pep Club 1, 2. Nihilite Committee 4. Young America Answers 4.

## Bernice Stoll

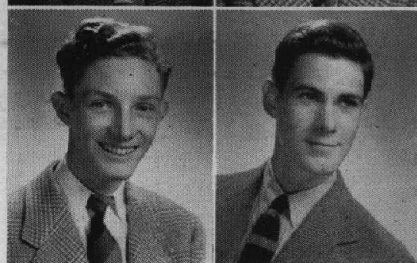
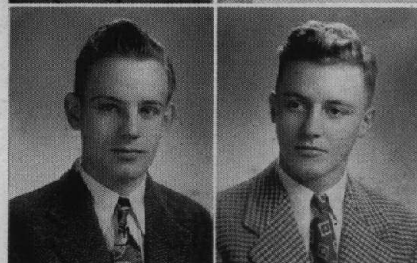
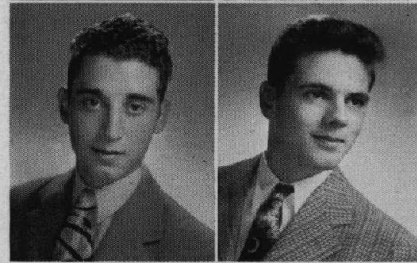
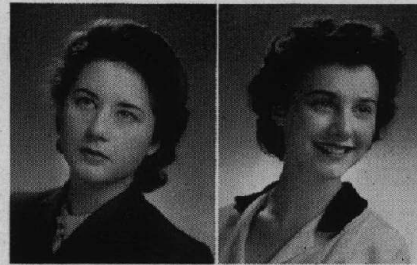
Yearbook Staff 4. Reflections Revelry 3. Student Activities Committee 4. Freshman Band 1. Eighth Grade Night 1, 2, 3.

## James Tagney

Swimming Team 1, 2, 3, 4. Captain 4. Most Valuable Swimmer 4. State Meet 3, 4. Synchronized Swim 1, 2, 3. Life Saving 1. Parents' Night 2. Red Cross Volleyball 4. Tumbling 3. Eighth Grade Night 2, 3. Junior Prom Committee 3. Junior Council 3. Water Carnival 1, 2, 3. Homeroom Vice-President 4. Weight Lifting 4.

## Harry Thill

Football 1. Basketball 1. Homeroom Vice-President 1. Cafeteria Committee 4. Boys' Glee Club 2.



# Seniors of 1945

## Marilee Thomas

Attended Traverse City H. S. 3. Horseback Riding 1. Newspaper 2. Orations 4. Cafeteria Committee 4. Foreign Language Club 1, 2, 4. G. A. A. 1, 2. Freshman Literary Club 1. Twirling 1.

## Mary Ann Trausch

Bowling 1, 2. Captain 2. Junior Prom Committee 3. High School Party 1, 2. Junior Council 3. Homeroom Stamp Chairman 4. Pep Club 1, 2. Choir 1, 2. Girls' Glee Club 1, 2. Christmas Concert 1, 2. Spring Concert 1, 2. Industrial Education 3, 4.

## John B. Verlenden, Jr.

Transferred from Senn H. S. 1. Football 2. Baseball 2, 3. Cafeteria Committee 4. Boys' Glee Club 2.

## Marjorie Wedel

Cafeteria Committee 4. Girls' Glee Club 1.

## Thomas E. Wetmore

Swimming Team 1. Synchronized Swim 2. Gold Pin 4. Silver Pin 3. Bronze Pin 2. Junior Prom Committee 3. Forum 1, 2, 3, 4. Secretary 3. Vice-President 4. Homeroom President 1, 2. Foreign Language Club 2. Roman Banquet 3. Visual Aids 4. Pep Club 1, 2. Band 1, 2, 3, 4. Orchestra 2, 3, 4. Water Carnival 2. Radio Code 3.

## Barbara Wilson

Transferred from North H. S. 3.

## Dorothea Jean Wolcott

Synchronized Swim 2, 3, 4. Horseback Riding 1. Bowling 2. Archery 3. G. A. C. S. 2. First Aid 2. Red Cross Class 4. Gold Pin 4. Silver Pin 3. Bronze Pin 2. Yearbook Staff 4. Photography Club 3. Foreign Language Club 2, 3. Visual Aids 4. G. A. A. 1, 2, 3, 4. Play Day 3. Band 3, 4. Orchestra 3, 4. Color Guard 2, 3. Water Carnival 1, 2, 3, 4. Life Saving 1. Homeroom Secretary 1. Freshman Literary Club 1. Eighth Grade Night 1, 2, 3. Major Music Award 4.

## Lois Toerber

Tennis 1. Archery 1. Red Cross Class 1.

## Gloria Joan Trietsch

Bowling 1. Red Cross Volleyball 4. Yearbook Staff 4. High School Party 1, 2. Citizens of Tomorrow 2. Forum 1, 2. Homeroom Vice-President 4. Cafeteria Committee 4. Foreign Language Club 2, 3. G. A. A. 1, 2, 3, 4. Pep Club 1, 2. Girls' Glee Club 1, 3, 4. Choir 4. Style Show 1, 2. Ship Launching Committee 4. Victory Queen 4.

## Virginia Waldin

Homeroom Stamp Chairman 3, 4. Cafeteria Committee 4. Foreign Language Club 2, 3. Roman Banquet 3. Orchestra 2. Water Carnival 3.

## Irene K. Weis

Horseback Riding 1, 2. Foreign Language Club 1, 2. G. A. A. 1, 2.

## Paul Frederick Winger

Baseball 1, 2. Basketball 1. Homeroom Vice-President 1. Cafeteria Committee 4. Photography Club 1, 2, 3. Foreign Language Club 2, 3. P. A. P. 1. Pep Club 1, 2. Choir 4. Double Quartet 4. Radio Code 3.

## Richard Wilton

Basketball 1, 2, 3. Track Manager 2. Cafeteria Committee 4. Foreign Language Club 2. Visual Aids 4. Pep Club 1, 2. Parents' Night 3. Reflections Revelry 4.

## Walter Zust

Basketball 1, 2, 3, 4. Track 2, 3. Tumbling 3. Dance Committee 4. Senior Cabinet 4. Forum 2, 3. Foreign Language Club 2, 3. Cafeteria Committee 4.



# Seniors Without Pictures

## Patricia Tirrell

Transferred from Senn H. S. 2. Photography Club 4.

## Nancy Haynie

Attended Principia H. S. 3. Synchronized Swim 1. Life Saving 1. Bowling 1. First Aid 1. Junior Prom Committee 2. High School Party 1, 2. Homeroom President 1, Secretary 2. G. A. A. 1, 2; Play Day 2, Camp 1. Pep Club 1, 2. Band 1. Girls' Glee Club 1, 2, 4.

## John Robert Kendler

Attended Morgan Park Military Academy 3. Football 1. Swimming Team 1. Life Saving 1. Track 1.

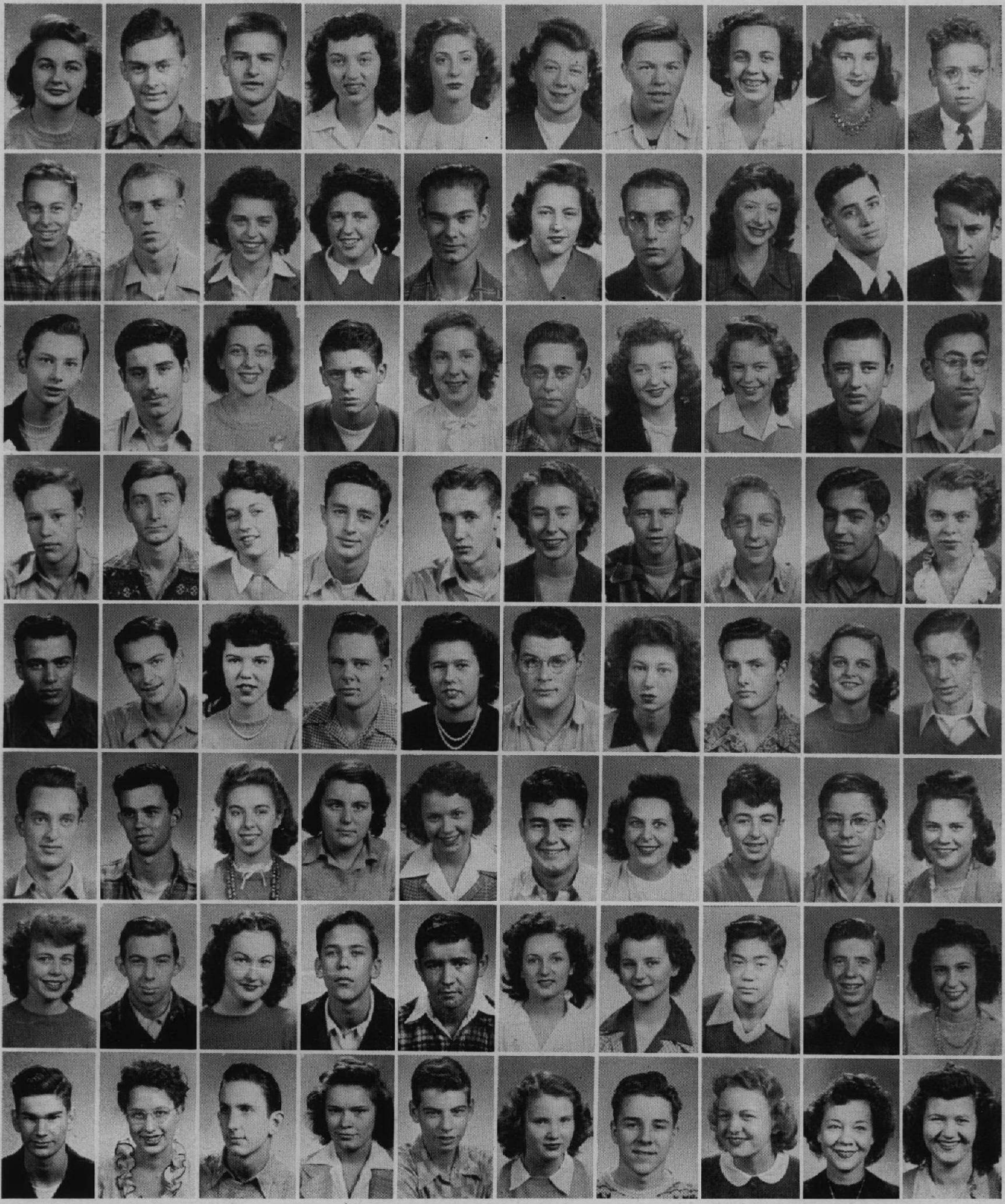
## In Memoriam

### Norman Hall

October 8, 1944 marks the date Norman Hall departed from us. When his sudden death was announced, everyone was greatly stunned. Norm was such an exceptional physical specimen that many who knew him didn't think it was at all possible for him to go. Besides this, Norm's great generosity, clean living, sense of fairness, and kindness toward his friends made him extremely well-liked. He was a good student in all his classes, excelling in mathematics. He also was extremely fast on his feet and would have developed into an exceptional football player if he had been with us longer.

Although he left us at the early age of seventeen, a person as clean and good as Norm will long be remembered.

J  
U  
N  
I  
O  
R  
S



TOP ROW:	Jean Ahrens Vernon Ahrens	Don Albrecht Alison Ash	Carol Anderson Margy Anderson	William Anderson Margaret Andreason	Margy Andrews Frank Backes
ROW II:	Roy Baumann Ray Baumgartner	Mary Becker Ruth Becker	Herbert Behrens Violet Berens	Willard Berkow Barbara Bernard	Mathew Boemmel Dennis Bornarth
ROW III:	Fred Borneman Nick Boznos	Dorothy Breden Dick Buchen	Shirley Beuder Jerome Burke	Marilyn Burns Pat Byron	Walter Campany Vito Colano
ROW IV:	Bob Carlson Jim Casson	Arlene Chastain Bob Cleary	Forrest Cole Pat Conard	Bruce Cook Joe Denk	Lucien Di Salvo Gertrude Dettmer
ROW V:	Bob Doetsch Richard Dobroth	Irene Donaldson Don Dye	Jean Ebenroth Jim Ehmer	Jean Eichelberg Don Falknor	Muriel Farrell Robert Fee
ROW VI:	Roy Feher Edward Fisher	Mary Joan Fitzgerald Joan Flavin	Donna Flynn Joe Freimuth	Frances Fuhr Jay Fuller	Walter Gatzke LaVerne Gerken
ROW VII:	Ethel Girten Norm Glauner	Sandra Goss Bob Grotz	Roland Hacker Renée Hain	Barbara Hall Richard Hamada	DeForest Hamilton LaVerne Hartung
ROW VIII:	Jim Harrer Dolores Hawkinson	Howard Haynie Lois Heiniger	Dan Heinz Muriel Hendrickson	Ed Herkert Marilyn Hertzberg	Helen Hoffman Elaine Hoppe

# J U N I O R S



TOP ROW: Dorothy Horitz  
Joan Horndasch  
ROW II: Mildred Jettman  
Alf Johnson  
ROW III: LaVerne Kellen  
Walter Kelting  
ROW IV: Earl Krmicek  
Dolores Kuehn  
ROW V: Roger Loeftgren  
Al Lukas  
ROW VI: Margaret Meindl  
Lenny Miller  
ROW VII: Charmaine Neutz  
Stanley Noesen  
ROW VIII: George Peschke  
Evelyn Plath

Dorothy Howe  
Deon Hughes  
Pat Jones  
Ronald Jones  
Bill Kenny  
Jean Kirscht  
Carol Kutz  
Shirley Kutz  
Janet MacCleary  
Ruth Madsen  
Henry Miller  
Kathryn Monahan  
Ronald Nordlund  
Gary Oakley  
Don Ransdell  
Warren Redick

Willie Hughes  
Jim Hukill  
Jim Jordan  
Evelyn Kante  
Francis Klein  
Ruth Kluge  
Dorothy Lacy  
Norma Lange  
Lorraine Mandeville  
Stanley Martin  
Margaret Morita  
Harry Mueller  
Nancy Ohlson  
Dorothy Olson  
John Reifenberg  
Louis Robinson

Charles Jaap  
Alice Jaeger  
Allan Karlove  
Loretta Karnatz  
Arlene Kaehler  
Shirley Koseck  
John Lane  
Margaret Leclercq  
Charles Massman  
Anne McKeever  
Stewart Munroe  
Louis Nachbauer  
Vivian Oslund  
Lois Ostrom  
Jerrie Rochow  
Bill Roden

Herbert Jarosch  
Harry Jensen  
Norma Keerns  
John Kent  
John Kokum  
Jean Krisor  
LeRoy Lehman  
Paul Leondis  
Herb Meinke  
Lorelei Meilicke  
Marion Nachbauer  
Don Nepstad  
Bill Ottens  
Jackie Perrin  
Robert Roman  
Maurice Ross

# J U N I O R S



TOP ROW:	Jack Rossman Arlene Ruesch	Jean Ruesch Carol Rugen	Audrey Ruthenbeck Thayne Sando	Marion Schaefer Albert Schroeder	Marion Schubert Myra Schuett
ROW II:	Jean Schultz Beryle Schwabe	Edward Sell Gloria Seltzer	Lorraine Shade Pat Sheehan	Eleanor Simone Corine Sloncen	Kathryn Sloncen Betty Smith
ROW III:	Dean Southworth Arnold Steif	Kenneth Stezskal Fred Stowe	Jeanne Streeter Marvin Struck	Howard Suckow Jack Suydan	Bob Swanson Richard Swanson
ROW IV:	Richard Tait Jean Tatsuda	Jane Taylor Joan Taylor	Gwendolyn Tiseth Bill Todd	Charmaine Valkenaar Bill Walmsley	Betty Weldon Lola Werhane
ROW V:	Dave Wilkinson Dolores Wilson	Frank Zallar Mary Ann Ziegel	Dick Zimmerman Donald Comstock	Eleanor Nelson Lorraine Nelson	

## *Juniors Without Pictures*

Martin Alterini  
Lois M. Anderson  
Jim Barbour  
John Barker  
Richard Baumhardt  
Ken Bennett  
Don Comstock  
Shirley Doolittle  
Betty Dumont  
Ted Ebert

Art Even  
Paul Fancher  
Bob Force  
Bill Guenther  
Shirley Hoddinott  
James Hohn  
Herbert Jaehnke  
Bob Johnson  
Leonard Kawell  
John Kent

Lois Kerley  
Robert Klump  
Donald Koch  
Beverly Kuhn  
Dolores Kwarnstrom  
Marian McLain  
Bob Marquette  
Eleanor May  
George Messner  
Barbara Nelson

Eleanor Nelson  
Lorraine Nelson  
Donna Norum  
Joe Paoell  
Ella Phillips  
Sally Porter  
George Riha  
May Robinson  
Jean Ruesch

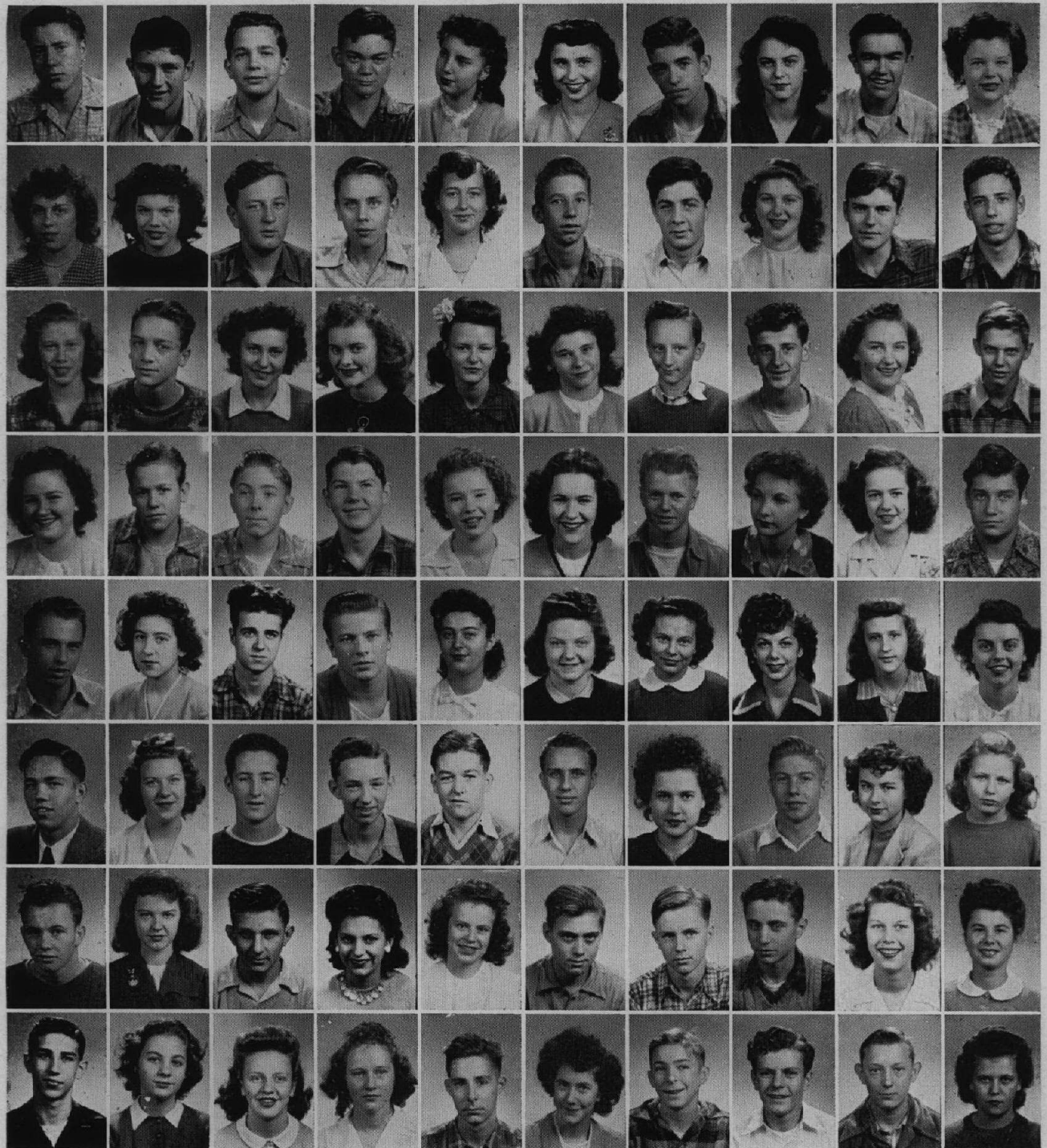
# SOPHOMORES



<b>TOP ROW:</b>	Henry Ahrens Raymond Ahrens	Richard Allen Dorothy Anderson	Doris Bailey Dyer Bailey	Merryl Bailey David Baker	Diane Baker Gertrude Barggren
<b>ROW II:</b>	Shirley Bartleson Lois Barton	Shirley Baumhardt Pat Baumhardt	Oliver Berens Ruth Berkow	Betty Bernardi Frank Biederer	Bob Bierbaum Dona Bishop
<b>ROW III:</b>	George Blameuser Bob Blessing	Henry Bohowski Bob Boehning	Joan Boemmel Lorraine Bogner	Ray Boldt Philip Bornarth	Lois Bornemeier Mary Jean Brandt
<b>ROW IV:</b>	Philip Brice Joan Bruck	Nancy Burge Don Byron	Earle Carlson Ray Carlson	Fred Champlin Betty Clarkens	Shirley Clarkens Mary Alice Clynes
<b>ROW V:</b>	Helen Conrad Bob Conway	John Crawford Jerry Dahm	Don Dadigan Dorothy Davis	Beatrice Delles Lois Deutsch	Robert Dombrowski Margaret Donovan
<b>ROW VI:</b>	Patsy Donovan Nancy Du Mont	George Dyrssen Noelle Elkins	Bob Farr Dick Fisher	Betty Fortman Dolores Franson	Dick Fuhr Louise Funke
<b>ROW VII:</b>	Joyce Gawrysh Dorothy Goers	Richard Graf Joanne Gubbins	Francis Guirsch Marilyn Gustafson	Walter Gutman Reinhold Hacker	Maxine Haggie Nancy Hall
<b>ROW VIII:</b>	Mike Hanegan Pat Hanegan	Carolyn Harnden Paul Hattendorf	Janet Hayes Eugene Hegarty	Allen Heim Robert Heinz	Bob Henrici Marilyn Herkert



S  
O  
P  
H  
O  
M  
O  
R  
E  
S



TOP ROW:	James Hill George Hoffman	Howard Hoffman John Hoffman	Carol Holmberg Pat Horner	Philip Horton Ruth Howard	Eugene Huber Phyllis Humphrey
ROW II:	Margaret Hunt Rae Ihrcke	Fred Jaehnke Walter Karnatz	Viola Karsten James Katzel	Harry Kaufman Betty Kellen	Robert Kepen Louis Kettel
ROW III:	Grace Klehm Herb Knapp	Marion Kohl Mary Kopp	Bernice Kozak Carol Krause	John Kretschmar Clyde Kreutter	Mary Ann Krier Ronald Krueger
ROW IV:	Dorothy Kruschka Byron Krysher	Don Kunkel Harold Larson	Janet Larson Linda Larson	Uno Larson Dolores Lauth	Jean Leach Richard Lebbin
ROW V:	Howard Lindstrom Marilyn Lump	Bill MacArthur Richard Mack	Sylvia Maheras June Maier	Stella Makarski Gloria Malnick	Celia Margalski Marilyn Marguerite
ROW VI:	Dwain Marquette Violet Martinson	Jim McNeely Jack McNeely	Bill McNeill Edward Meyer	Virginia Mikulec Albert Miller	Frances Monahan Charlotte Monson
ROW VII:	Bob Miller Carol Murray	John Noffz Joyce Nordlund	Patricia Norum Ronald Oates	Don Olson George Pasek	Alma Patske Vivian Pawlowski
ROW VIII:	Robert Pearson June Pence	Shirley Peters Betty Plath	Roger Racine Betty Ann Rae	Paul Reiland Harold Renis	Henry Rings Betty Risinger

# SOPHOMORES



- |          |                                  |                                   |                                      |                               |                                  |
|----------|----------------------------------|-----------------------------------|--------------------------------------|-------------------------------|----------------------------------|
| TOP ROW: | Eleanor Rollick<br>Joan Rouse    | Dorothy Ruesch<br>Marianne Ruesch | Charles Russell<br>Gert Scheidecker  | Pat Shirra<br>Chris Schlueter | Anita Schmid<br>Elaine Schroeder |
| ROW II:  | Eugene Schultz<br>Peter Schuster | Shirley Seeley<br>Lloyd Seltzer   | Dorothy Sherman<br>Lorraine Sorensen | Jane Sparkman<br>Howard Speer | Betty Steek<br>Ted Stockfish     |
| ROW III: | Dave Straw<br>Merrill Taylor     | Catherine Thompson<br>Jim Todd    | Wendell Toepfer<br>Joyce Tompkins    | Joe Toth<br>Bob Train         | Elmer Valkenaar<br>Bob Wahrer    |
| ROW IV:  | Joe Waldin<br>Mark Weis          | LaVerne Wenzel<br>Charlene Werner | Joan Westerberg<br>Margaret Wetmore  | Joe Wettengel<br>Jerry Whalen | Frank Williams<br>Evert Willney  |
| ROW V:   | Evelyn Windmeier<br>Bill Witte   | Margaret Wood<br>Bette Youngberg  | Millie Zavrel<br>Gerry Zeller        | Mike Zenner<br>August Ziehlke | Jeannette Ziehlke<br>Don Byron   |
| ROW VI:  |                                  |                                   | Lucy Hamada                          |                               |                                  |

## *Sophomores Without Pictures*

Marion Carlson  
Audrey Drake  
Naena Dunlap  
Ethel Engel  
Lloyd Gaston  
Gloria Green  
Marjorie Harrer  
Virginia Hogan

Josephine Huber  
Herbert Johnson  
Pat Jones  
Howard Korsmo  
Arlene Kaehler  
Jean Lewis  
Marie Marken  
William Martini

Richard Rattray  
Don Sandin  
Pat Sheehan  
Marilyn Spindler  
Joan Stelzer  
Michael Such  
Dave Taylor  
Dorothy Traush

F  
R  
E  
S  
H  
M  
E  
N

TOP ROW:  
(left to right):  
Gordon Anderson  
Louis Anderson  
Stanley Anderson  
Marilyn Arndt  
Jane Arnold  
Ron Bair  
Frances Baker  
Barbara Baldwin

ROW II:  
Barbara Ballantine  
Sona Baptist  
Charles Barrett  
Irene Bauman  
Gloria Bauman  
Roman Bemoseke  
Ralph Bennett  
Geraldine Bernard

ROW III:  
Doris Berges  
Alfred Berthold  
Mary Biederer  
Bill Bierbaum  
Don Biehn  
Betty Birong  
Eugene Bitter  
Frank Blameuser

ROW IV:  
Jim Blessing  
Marion Boemmel  
Hilda Bonaguro  
Sam Boznos  
John Brod  
Don Brown  
Robert Brownell  
Bob Burke

ROW V:  
Betty Calkins  
John Canavan  
Mary Carlson  
Don Carlson  
Bernice Clarkens  
Evelyn Cole  
Ted Coleman  
Bill Comstock

ROW VI:  
Ted Conrad  
Roger Coverley  
Eugene Davis  
Jim Deily  
Milton Deverman  
Lauretta Donaldson  
Pilar Dorado  
Lyle Dye

ROW VII:  
Joan Eberhardt  
Richard Eichelberg  
Tom Fitzgerald  
Bill Fortman  
Bill Fotsch  
Ida Franson  
Charlotte Freiling  
Bill Fritch

ROW VIII:  
Lee Garner  
Patsy Garrity  
Florence Geerdt's  
Garry Novak  
Catherine Gerich  
Don Gerken  
LaVerne Glauner  
Ken Gregor

ROW IX:  
Richard Grochowski  
Roger Groenland  
Gilbert Grosse  
Lawrence Hall  
Misako Hamada  
Will Harden  
Lee Harrer  
Pat Hartung

ROW X:  
Ray Hattendorf  
Shirley Hawkinson  
Margaret Hedstrom  
Jim Heiniger  
John Heinz  
Bob Helton  
Louis Hennig  
Billy Hobs





TOP ROW:  
 (left to right)  
 Carlyle Hoppe  
 Joan Hull  
 Charlene Jacobson  
 Richard Jaeger  
 Irene Jarmuth  
 Earl Jennetten  
 Bernice Johnson  
 Janet Johnson

ROW II:  
 Ronald Johnson  
 Herb Jones  
 Edward Kadlec  
 Le Roy Kante  
 Bob Kathe  
 Bill Kelley  
 Betty Kennedy  
 Noel Kiefer

ROW III:  
 Bob King  
 Jim Koburi  
 Jeanette Koch  
 Norma Koch  
 Alfred Kohler  
 John Kranz  
 Glen Kufeldt  
 Gwen Kufeldt

ROW IV:  
 Edward Kutz  
 Barbara Lange  
 Phillip La Veau  
 Ed Linskey  
 Betty Long  
 Marilyn Long  
 Don Lump

La Verne Lutgen  
 ROW V:  
 Evelyn Mahnke  
 Ted Marras  
 Curtis Massey  
 Joyce Mathews  
 Lee Matthies  
 Dolores Mattson  
 Beverly McClaskey  
 Ronald McKinley

ROW VI:  
 Carole Medlin  
 Clayton Merrill  
 Lois Mertes  
 Leslie Meyer  
 Eva Lou Michel  
 Hildegard Mickler  
 Florence Miethke  
 Chester Mikulec

ROW VII:  
 Art Miller  
 Dick Minor  
 Alvin Molitor  
 Daniel Moore  
 Marilyn Mueller  
 Richard Marundee  
 Bill Neuson  
 Sally Nissen

ROW VIII:  
 Jack Nixon  
 Gerlene Noddin  
 Donald Noll  
 Darlene Nordlund  
 Richard Nordquist  
 Jeanette Oehring  
 Joyce Olson  
 Pat Olson

ROW IX:  
 Don Paoella  
 Dolores Paulsen  
 Marilyn Pearson  
 Florence Pederson  
 Bill Permer  
 Barbara Perrett  
 Joanne Peters  
 Shirley Peters

ROW X:  
 Doris Peterson  
 Marjorie Philippy  
 Wayne Piehler  
 Alice Putman  
 Arthur Py  
 Melville Quincy  
 Donald Racine  
 Marice Ray

F  
R  
E  
S  
H  
M  
E  
N

F  
R  
E  
S  
H  
M  
E  
N

TOP ROW:  
(left to right)  
Lois Reiter  
Mary Ann Ritter  
Howard Robbins  
Margie Rochow  
Eileen Rodley  
Donald Roeser  
Carole Ruesch  
Paul Rugen

ROW II:  
Donna Runne's  
Stuart Russel  
Ben Segalla  
Regina Sandberg  
John Schaab  
Nancy Scanlon  
Joan Schewe  
Norman Schilf

ROW III:  
Eric Schmidt  
Florence Schmidt  
Shirley Schmidt  
Betty Schmitt  
Dave Schmit  
Carl Schrimpf  
Carol Schuler  
Rosalie Seffck

ROW IV:  
Walter Seligman  
Bob Seltzer  
Richard Sembach  
Richard Sesterhenn  
Jane Schewe  
Lorenz Schey  
Howard Siegel  
Edwin Soergel

ROW V:  
Don Speer  
Dorothy Steek  
Robert Stowe  
Eugene Suckow  
John Sundblom  
Elsa Tamminga  
Evelyn Taylor  
Dolores Tegtman

ROW VI:  
Rosemary Thomas  
Harold Thompson  
Carlton Thorsen  
Jeanette Tolzien  
Bill Trapp  
Louis Triebold  
Barbara Vatova

ROW VII:  
Jim Wead  
Harold Weigt  
Harriet Wenzel  
Elmer Werhane  
Pauline Wettengel  
Clayton Wieder  
Lois Wilson  
Donna Wilton  
Bill Windmeier

ROW VIII:  
Bill Wokoun  
George Wolitski  
Art Wuest  
Charles Zuber  
Bill Kella  
Marion Krueger  
Carl Timm



*Freshmen Without Pictures*

Donald Baier  
Arlene Barg  
Allen Bushey  
Geraldine Calkins  
John Carlson  
Don Christensen  
Jackie Conard  
Marlyn Engert  
Howard Florus  
Charles Gray  
Raymond Hoglund  
William Hutching

William Jenne  
Barbro Johnson  
Marion Jostock  
Lucy Kluesing  
Philip Knapp  
Kenneth Lamb  
Nancy Lamberg  
Roger LaPlante  
Jack Lewis  
Donald Maitzen  
Arthur Meyer

Melaine Mickow  
Elizabeth Noeson  
Richard Noffz  
William Olson  
Sophie Olszewski  
Marjorie Philipp  
Jeanine Platt  
Dick Porter  
Lois Redemann  
William Sanke  
Paul Sandin

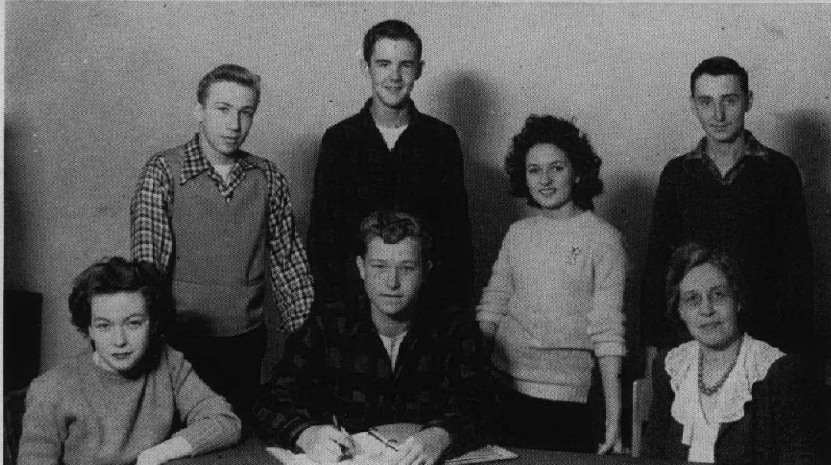
Jim Schilling  
Rudy Schmid  
Eric Schmidt  
Jack Schultz  
June Tolzien  
Evelyn Trefel  
William Warkenthien  
Barbara Webster  
Muriel Wittbold  
Raymond Wohlbrandt  
John Woods



## Senior Cabinet

In preparing to meet the problems of democracy this group has discussed senior problems and suggested solutions.

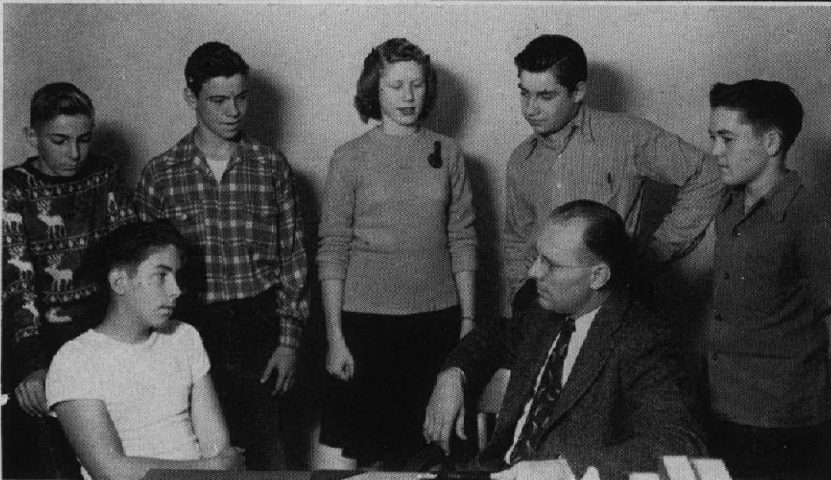
*Seated, left to right: Mr. Benette, Hildgarde Jarosch, Rae Rita Olson, Sally Fjellman, Nancy Perrin.  
Standing: Katie Clark, Ernest Reimann, Walter Zust.*



## Junior Council

Solving the problems of an active junior class has been the duty of these seven juniors and their sponsor, Miss deBooy.

*Seated, left to right: Jackie Perrin, Henry Miller, Miss deBooy.  
Standing: Stanley Noesen, John Barker, Renee Hain, James Casson.*



## Sophomore Senate

This is the Sophomore Senate. During the year they have met twice a month with the adviser to discuss sophomore problems and co-ordinate class activities.

*Seated, left to right: Don Kunkel, Mr. Ihnc.  
Standing: Paul Reiland, Dick Fisher, Grace Klehm, Richard Lebbin, Bill McNeill.*



## Freshman Board of Advisers

The youngest group of debaters on school problems will carry on the tradition of good student government in future years at Nilehi.

*Seated, left to right: Leslie Meyer, Miss M. Ronalds, Bill Kella.  
Standing: Joan Hull, Richard Noffz, Mary Biederer, Howard Weigt, Lois Redeman.*

## Parents' Night

Uncertainty and bewilderment mark the faces of these students-for-the-night as they study their class programs. Now, each will know how Junior felt the first day of school.



They're off! Secure (for the moment) in the knowledge that room 310 is in the right hand corner of the basement floor of the south wing, parents are scurrying for classes. Wonder if they will be tardy?



Ah, eats! After four strenuous classes of fifteen minutes each, parents willingly line up for the pause that really refreshes. Lunch is always popular.



What power the popular professor seems to wield over his class room full of attentive listeners! Standing room only is usually the order in classes on Parents' Night.



## Library Staff

"Have you got a book with a yellow cover—I forgot the name of it."

"This book isn't really overdue, is it?"

"But we weren't talking. I was asking him about the lesson."

Miss Myers and her staff of patient and long-suffering library assistants hear remarks like these every day. Some day they'll get their reward for their outstanding service—we hope.

*Front row, left to right: Ruth Madsen, Donna Flynn, Shirley Ahrens.*

*Second row: Jean Schultz, May Robinson, Marilyn Clark, Margaret Wetmore, June Pence, Carol Anderson, Nancy Ohlson, Nancy Perrin.*

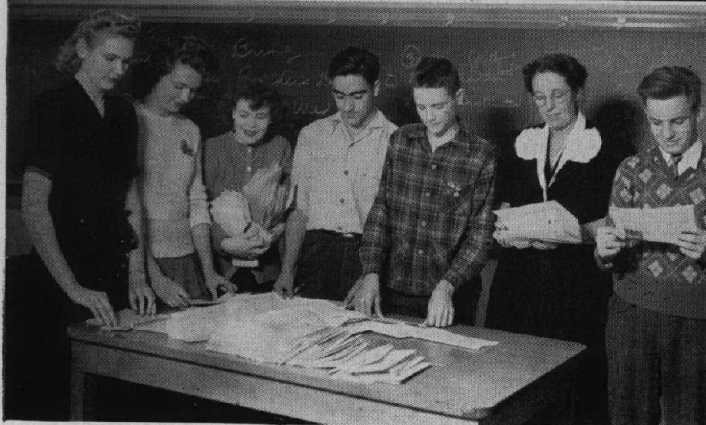
*Third row: Irene Grosse, Jean Leach, Miss Myers, Walter Zusi, LaVerne Hartung, Ruth Jones, Mary Ann Krier.*

*Fourth row: Ruth Howard, Hane Taylor, Shirley Kutz, Carol Kutz, Rosemary Breden, Marilyn Proesel, Mildred Jettman, Dorothy Olson, Margaret Meindl.*

## Nilehilite Committee

All service men like to hear the news from home, and the graduates of N.T.H.S. are getting their news through the *Nilehilite*. More than 250 copies of every issue of the school paper are mailed out to service personnel all over the world.

*Standing, left to right: Irene Gross, Lorraine Hanne-mann, Marilyn Clark, LaVern Grover, Bill Stielow, Miss Harbert, Dan Sullivan.*



## Paper Salvage Committee

These five people have done much for Nilehi's war effort. Collecting paper, having it bailed, then selling it, they made enough money to buy stamps for mailing *Nilehilites* to our boys in service.

*Left to right: Mary Ellen Racine, Evelyn Miethke, Bob Hartney, Jim Tagney, Horace Lindecker.*

## Stamp and Bond Chairmen

These are the people who made possible for us the high average of \$688.00 a week on stamp and bond sales. Urging students to buy, collecting money, tabulating, and balancing accounts were all part of their job.

*First row, left to right: Shirley Bartleson, 211; Betty Rae, 310; Charmaine Valkenaar, 308; Betty Smith, 214; Marilyn Long, 313; Mary Ann Trausch, 100; Dorothy Gustafson, 107; Dona Bishop, 206; Dorothy Davis, 206.*

*Second row: Betty Weldon, 106; Jane Taylor, 212; Bernadette Creaney, 316; Florence Geerds, 221; Janet Johnson, 112; Chris Schlueter, 219; Jack Schaab, 216; Ronnie Bair, 209; Bill Hughes, 110; Hilda Bonaguro, 313; Frances Fuhr, 106; June Maier, 210; Virginia Waldin, 102.*

*Third row: Miss Harbert, director; Mary Louise Carl-son, 108; Pat Lamert, 315; Rosemary Lutz, 306.*







### Color Guard

"Color Guard, halt!" How many times we have heard these words at assemblies, pep rallies, and school programs. Here are the boys that carry out those orders—the color guard.

*Left to right: Bob Wahrer, Dick Dobroth, Bob Conway, David Straw, Fred Borneman, Bob Pearson.*

### Visual Education

If one picture is worth a thousand words, the school certainly is indebted to this group for many thousands of words, for they have brought us educational pictures throughout the year.

*Front row, left to right: Richard Dobroth, Louis Robinson, Bob Brownell, Phil La Veau, Louis Hennig, Roy Baumann, Don Noll.*

*Second row: Herbert Jarosch, Al Schroeder, Ray Nelson, Noel Kiefer, Howard Haynie, Mrs. Hind.*

*Third row: Alf Johnson, Robert Dammann, Louis Anderson, Phil Engbrecht, Walter Gatzke.*

### Stamp and Bond Checkers

"200 ten-cent stamps, 180 quarter stamps, and twenty-five bonds!" These bond and stamp workers are checking weekly sales. After the totals are made out, this group purchases the bonds and stamps and sees that they get to the student buyers.

*First row, left to right: Dolores Brooks, Lorraine Hanson, Bernice Stoll, Frances Fuhr.*

*Second row: Helen Fliieger, Eleanor Koch.*



*Christmas Vespers*

*On the social side—*

*Between classes—the rush hour*

*Busy in the library*

*The grand parade, Hobo Day*

*Christmas sox*

*First day of school*

*The senior-faculty tea*



*Loud speakers*

*Playing solitaire*

*Snowflake Swirl committee*

*Frosh spellers*

*Art students at work*

*Public speaking group*

*Tabulating our radio choices*

*Cafeteria helpers*

*Plane geometry*

*And Around School*



## Clothing Class

"Don't stick yourself with those pins, girls!"

First row, at machines, left to right: Helen Neumann, Evelyn Plath, Dorothy Trausch, Helen Flieger, Frances Dietsch.

Second row, at tables, left side: Shirley Ahrens, Helen Dahm, Rosemary Beiderer, Kathryn Sloncen, Jeanette Ziehlke, Margaret Le Clerq, Miss Line.

Third row, at tables, right side: Lorraine Krzesneske, Violet Berens, Marion Schaefer, La Verne Gerken, Dorothy Ruesch, Lorraine Hansen.

Fourth row: Ruth Jones, Gwendolyn Tiseith, Dorothy Hortiz, Marilyn Horndasch, Irene Gross, Marilyn Clark, Shirley Grosse, Dolores Wilson.

Fifth row: Corinne Sloncen, Vivian Pawlowski.



## Print Shop

"Let's go to press!" Here are the fellows that put the paper to bed and print programs, passes, and posters.

First row, left to right: Jimmy Hohns.

Second row: Fred Jaehnke, Frank Beiderer, Jerry Dahm.

Third row: Mike Zenner, Joe Wetengel, Art Anderson, Elmer Valkeenaar, Bob Train, Mr. Meier, Reinhold Hacker.

Fourth row: Francis Guirsch, Jay Gallas, Walter Karnatz, Roland Hacker, Erwin Krmicek, Jim Ehmer, Bill Guenther.



## Wood Shop

Mr. Rickard and the boys in the wood shop really turn out some fine pieces of wood work.

Front row, left to right: Mr. Rickard, Richard Hamada, Kenneth Stezskal, Harold Springer, Willard Berkow.

Second row: John Aliprandi, Martin Alterini, Ernest Risinger, Nick Bogner, Bill Guenther.

Third row: Jim Ehmer, Joe Freimuth, George Hoffman, Reinhold Hacker.



## Girls' Science Book Report Club

Front row, left to right: Jeanette Tolzien, Jane Schewe, Harriet Wenzel, Evelyn Mahnke, Marilyn Pearson, Marjorie Philippy, Janet Johnson.

Second row: Joyce Mathews, Sally Nissen, Evelyn Cole, Geraldine Calkins, Charlotte Freiling, Lois Redeman, Delores Tegtman, Barbara Balantine, Catherine Gerich, Joan Schewe.

Third row: Geraldine Bernard, Dorothy Steek, Mary Biederer, Carol Schuler, Eva Michel, Lois Reiter, Jackie Conrad, Ida Franson, Irene Bauman, Lois Mertes, Arlene Barg, Miss Harrison.

## French Classes

Ah, la belle France! One cannot say which is more beautiful here, the tapestry or the young ladies grouped in front of it.

Front row, left to right: Bob Kepen, Charmaine Neutz, Renee Hain, Marilyn Horndusck, Dolores Johnson, Miss Berry, Jeanne Streeter, Pat Canty, Shirley Lawrence, Dorothy Howe, Laura Breckenridge.

Second row: Henry Meinke, Don Noll, Don Speer, Carol Anderson, Doris Bailey, Earlene Robinson, Pat Baumhardt, Jerrie Rochow, Rae Rita Olson, Pat Schirra, Lorelei Meilicke, Howard Speer, George Wolitski, Jane Sparkman.



## Work Study Class

Nowadays it's possible to work and attend school; that's just what these people do.

Front row, left to right: Mr. Selden, George Kozak, Ken Hoffman, John Kircher.

Second row: Bill Comer, Don Ransdell, Mary Ann Trausch, Fritz Daiberl, Warren Mueller.

Third row: Charles Gille, Lee Morse, Lois Pierce, Dolores Mertes, Pat Henrici, Dan Silicani.



## Sophomore English Class

Julius Caesar, Silas Marner, and many short stories are familiar subjects to this group, members of Miss Sayre's sophomore English class.

First row, left to right: Margaret Wetmore (standing), Dorothy Kruschka, Don Byron, Joan Rouse, Bob Wahrer.

Second row: Lois Ihrcke, Bob Boehning, Vivian Pawelowski, Pat Norum, Jeannette Ziehlke.

Third row: Don Sandin, Betty Plath, George Blameuser, Fred Champ- lin, Dwain Marquette.

Fourth row: Nancy Burge, Phillip Brice, Jerry Dahm, John Hoffman, Margaret Wood, Dona Bishop.

Standing: Miss Sayre.



## Foods Class

Seated at left table, left to right: Helen Dahm, Marion Kohl, Shirley Seeley, Helen Neumann.

Right table: Gwendolyn Tiseth, Ada Frederick, Betty Bernardi.

Standing: Irene Gross, Marilyn Clark, Lee Morse, Patsy Donovan, Lois Pierce, Miss Line, Dolores Mertes, Terry Keegan, Barbara Hall, Pilar Dorado, Shirley Koseck.





## At The Library Desk

Being helpful is the chief duty of the student assistants to the school librarian, Miss Myers. This scene is typical of their work every period of every day.

*Staff, left to right: Shirley Kutz, Joan Rouse, Carol Anderson, Margaret Wetmore, Charles Gille, Walter Zust.*

*Students: Ray Baumgartner, James Casson, Bob Cleary, Alison Ash, Margaret Andrews, Fred Borneman.*

## Foreign Language Club Representatives

Every foreign language class in the school chooses representatives for the Foreign Language Club, one of the largest organizations in the school. Their big activity is the annual Christmas party.

*First row, left to right: Marilyn Davis, Ann Marie Schirra, Jeanne Streeter, Dolores Paulsen, Pat Conard, Rae Olson, Sally Fjellman.*

*Second row: Janet Larson, Joan Rouse, Miss Ronalds, Miss Small, Miss Berry, Miss Kranz, Bill Anderson, Don Brown.*

## German Band and Singers

"Ein, zwei, drei . . . spiel!"

Members of the class in German have lots of fun singing old German songs, especially around Christmas time.

*Front row, left to right: Mays Bishop, Nick Bogner, Louis Nachbauer, Stanley Martin, Hildegard Jarosch, Herb Behrens, Herb Jarosch.*

*Second row: Don Lundberg, Allen Karlove, Bob Roman, Betty Rae, Ann Marie Schirra, Bob Cleary, Miss Kranz.*

## Junior Public Speaking

Northwestern's School of Speech cooperated with our English department in giving students special training in speech.

*Standing: Bill Todd.*

*Front row, left to right: Roger Loeffgren, Lorelei Mellicke, Fred Stowe, Charles Massman.*

*Second row: Thayne Sando, Maurice Ross, Jack Suydam, Bill Walmsley.*

*Third row: Dolores Wilson, Gloria Seltzer, Jackie Perrin.*

*Fourth row: Tom Stockenberg, Richard Hamada, Miss Houx, Dave Wilkinson, Stewart Munroe.*

## Red Cross Drive

These faithful few were the directors of the school's annual Red Cross drive. At the end of the week, every square in the cross was filled in, indicating that every home room had reached or exceeded its quota.

*Front row, left to right: Charlotte Freiling, Jane Sparkman.*

*Second row: Linda Larson, Betty Ann Rae.*

*Third row: John May S 1/c, Shirley Rohrer, Nancy Hall, Miss Line.*

## Red Cross Class

Miss Line is kept busy two periods a week with this group, who are engaged here in the project of filling Christmas stockings for wounded service men. Another of their big projects is the annual drive for funds for the National Red Cross.

*Table at left, clockwise: Marilyn Horndasch, Nancy Hall, Shirley Rohrer, Frances Dietsch, Dorothea Wolcott.*

*Center table: Dorothy Goers, Rae Ihrcke, Miss Line Carol Kutz, Linda Larson.*

*Table at right: Loretta Donaldson, Charlotte Freiling, Marjorie Philippy, Betty Ann Rae.*

## Red Cross Council

Each month, at the Y. M. C. A. Red Cross meeting, Niles Township High is represented by these students, making up our local Red Cross Council for the first and second semesters respectively.

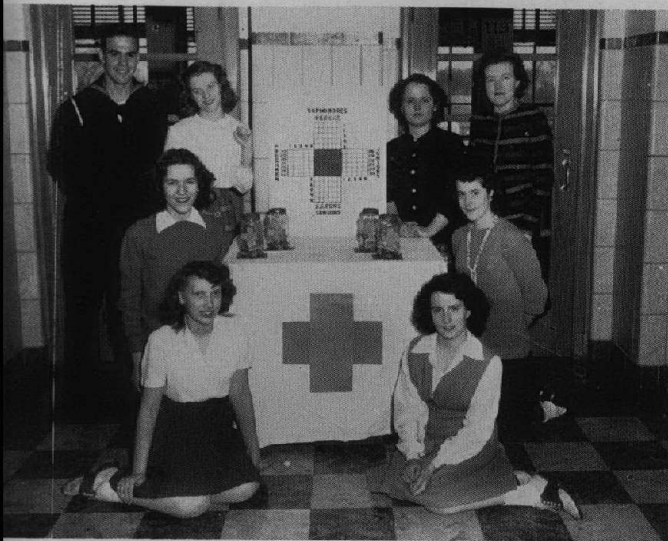
### First semester Council

*Seated: Doris Berges, Shirley Rohrer, Miss Line.*

*Standing: Bill McNeill, Don Sandin.*

### Second semester Council

*Left to right: Don Biehn, Dick Minor, Miss Alice Line, Doris Berges, Shirley Rohrer.*





*Cheerleaders with their leader*

*Munroe makes with the politics*

*Twirlers*

*Cafeteria decorators*

*Message from Bataan*

*The Red Cross drive*

*The Bavarian Blowhards*

*"Spike Jones" Wilton and Crew*

*Plenty of Work*



## Some Play, Too!

*Sally shows the new frock*

*The Victory Queen and her court*

*Burns tries out her technique*

*Pin-up gal*

*Seaman May speaks*

*Glamour plus*

*Cafeteria monitors*

*Hoosier Hot Shots*

*Watch out for the cake, Chuck!*





## Orchestra

Front row, left to right: Herbert Jarosch, John Lane, Mars Bishop, Donna Bishop, Nancy Burge, William McNeil, Herbert Behrens, Elsa Tamminga, Grace Klehm. Second row: Raymond Nelson, Marion Nachbauer, Margaret Morita, Marilyn Gustafson, Alma Patski, Renee Hain, Stanley Martin, Dorothea Wolcott, Harry Jensen, Tom Wetmore, Robert Dammann, Donald Lumpp, William Wokoun, Kenneth Bennett. Third row: Mr. Collins, Alison Ash, Evelyn Windmeier, Betty Risinger, Patricia Norum, Lois Wilson, Carol Murray.

## Band

Although the size of the band was somewhat reduced this year, it remains one of the ablest organizations in the school. Remember that big pep rally after the regional win and how the band outdid itself?

This year, Mr. Collins had to build almost an entirely new orchestra, having lost the greater part of his experienced players through graduation and calls to the service. The spring concert will undoubtedly prove, however, that once more he has done a fine job in developing a group of capable musicians.



## Band

**FIRST ROW,**  
left to right:  
Herbert Behrens  
Robert Boehning  
Marilyn Gustafson  
Howard Florus  
Russell Skallerup  
Dolores Brooks  
Grace Klehm  
David Wilkinson  
Bob Dammann  
Thomas Wetmore

**SECOND ROW:**  
Kenneth Bennett  
Joseph Denk  
DeForest Hamilton  
William Wokoun  
George Dyrssen  
Wayne Hansen  
Stanley Martin  
Renée Hain  
Dorothea Wolcott  
Stewart Munroe  
Harold Renis  
William McNeill  
Merrill Bailey  
Donald Lumpp  
Laverne Grover

**THIRD ROW (right):**  
Edward Herkert  
James Wead  
Herbert Jarosch  
Harry Jensen  
Horace Lindecker  
Donald Falknor  
Ronald Oates  
Louis Nachbauer

**FOURTH ROW:**  
Mr. Collins  
Alison Ash  
Carol Murray  
Patricia Norum  
Evelyn Windmeier  
Lois Wilson  
Howard Lindstrom  
Charles Massman  
Richard Dohroth  
David Straw

## Boys' Chorus

A new group this year—but they appeared to good advantage in the Christmas vespers.

Front row,  
left to right:  
Bill Windmeier  
Donald Brown  
Arthur Wuest  
Clayton Merrill  
Edwin Soergel  
Second row:  
Ronald Bair  
Donald Speer  
Louis Anderson  
Joe Freimuth  
Howard Speer  
John Schaab

## Choir

First row,  
left to right:  
Miss Klaus  
Marilyn Gustafson  
Dolores Hawkinson  
Shirley Kutz  
Nancy Cates  
Elaine Dall  
Jerrrie Rochow  
Carol Rugen  
Dorothy Gustafson  
June Fredricks  
Lois Heiniger

Second row:  
Doris Bailey  
Betty DuMont  
Beverly Pearson  
Mary Kay Clark  
Frank Backes  
Don Sandin  
Tom Podraza  
Don Dadigan  
Muriel Hendrickson  
Jean Kirscht  
Margaret Andreassen

Third row:  
Lorraine Nelson  
Earlene Robinson  
Lorraine Hanson  
Sally Porter  
Phil Egebrecht  
Dick Dobroth  
Irvin Krmicek  
Howard Speer  
Vivian Oslund  
Violet Martinson  
Joanne Gubbins

## Double Quartette

"Introducing — the stars of our show!"  
From this group of eight melodious voices came the soloists of the Christmas Vespers, the outstanding musical event of the first semester.

Left to right:  
Howard Speer  
Phil Egebrecht  
Doris Bailey  
Katie Clark  
Dolly Gustafson  
Carol Rugen  
Frank Backes  
Don Sandin  
At piano:  
Muriel Hendrickson.



## Girls' Glee Club

First row, left to right: Evelyn Kante, Beverly McCaskey, Joyce Mathews, Joanne Peters, Pat Norum, Shirley Rohrer, Evelyn Trefl, Elaine Schroder, Lois Barton, Carol Murray, Lorraine Sorenson, Marice Ray. Second row: Beatrice Delles, Betty Plath, Jane Arnold, Elsa Tamminga, Lois Wilson, Leslie Meyer, Doris Peterson, Gertrude Baragren, Betty Roe, Lorraine Mandeville, Carol Anderson, Lorelei Mellicke. Third row: Betty Kellen, Eva Lou Michel, Joyce Nordlund, Regina Sandberg, Margaret Donovan, Marion Mueller, Pat Hanegan, Joan Rouse, Helen Hoffman, Lola Werhane, Alison Ash, Margery Plummer, Miss Klaus.



## Choir

Remember the inspiring music of the Christmas Cantata, and other vocal events of the year? Here is one of the groups responsible for those concerts—the robed choir.

Do-re-mi. A chorus of feminine voices comes floating down the halls, and its source is the Girls' Glee Club. This organization was an outstanding feature of the Christmas Vespers and the music festival.



## Major Dramatics Class

While Pat is being shot, Ditty is being strangled, Laura, Mary Jane, and Lillian are doing a singing sister act, Mrs. Esch looks lovingly upon her Major Dramatics Class.

*Sitting on floor, left to right: Jerrie Rochow, Chuck Bailey, Bernadette Creamey.*

*Seated: Sally Fjellman, Rupert Roegner.*

*Standing: Pat Canty, Dorothea Sandberg, Mrs. Esch, Betty Burns, JoAnne Detweiler, Mary Ellen Racine, Marilyn Davis, Pat Lannert, Laura Breckenridge, Lillian Sprud, Mary Jane Nelson, Ralph Nettland, Shirley Lawrence.*

## Advanced Dramatics

Mr. VanArsdale is giving his group some pointers. Barker is the bashful center of attention of the three belles on the left; Burns is camera-conscious; and Conard and Pearson are exchanging gossip.

Well, if it ain't the old home folks, come to taown fer to take a tin type, b'gosh. Ain't our darling little Nell (C. Neutz) just too, too cute for words?

*Left to right: Mr. VanArsdale, Beryle Schwabe, John Barker, Shirley Hoddinot, Dorothy Lacy, Marilyn Hertzberg, Anne McKeever, Beverly Pearson, Marilyn Burns, Patricia Conard.*

*Front row, left to right: Marilee Thomas, Donna Norum, Jeanne Streeter, Gertrude Detmer.*

*Second row: Barbara Bernard, Ralph Nettland, Charmaine Neutz, De Forest Hamilton.*



## "A Little Honey"

Here are the stars of our world premiere of Mr. Davidson's play, "A Little Honey." Pictures of this group and the play they presented were featured in the play book just published.



*Sitting, left to right: Mary Ellen Racine, Pat Canty, Ra'ph Nettland, Sally Fjellman.*

*Standing: Chuck Bailey, Betty Burns, Laura Brechinridge, DeForest Hamilton, Shirley Lawrence, Mary Jane Nelson, Rupert Roegner, Marilyn Davis.*

## On Stage

A scene from the powerful one-act play, "Message from Bataan," added a high moment to the school dramatic season. The play was the outstanding feature of our Armistice Day celebration and our annual Parents' Night.

One of the comic scenes from "A Little Honey" was shot on the opening night of the world premiere of that play by representatives of the publishing company.

*Left to right: DeForest Hamilton, Mr. Van Arsdale, Byron Krysher, John Barker, Howard Suckow, Beryle Schwabe, Merril Taylor.*

*Sitting, left to right: Pat Canty, Ralph Nettland. Standing: Laura Breckenridge, Rupert Roegner.*



# Forum



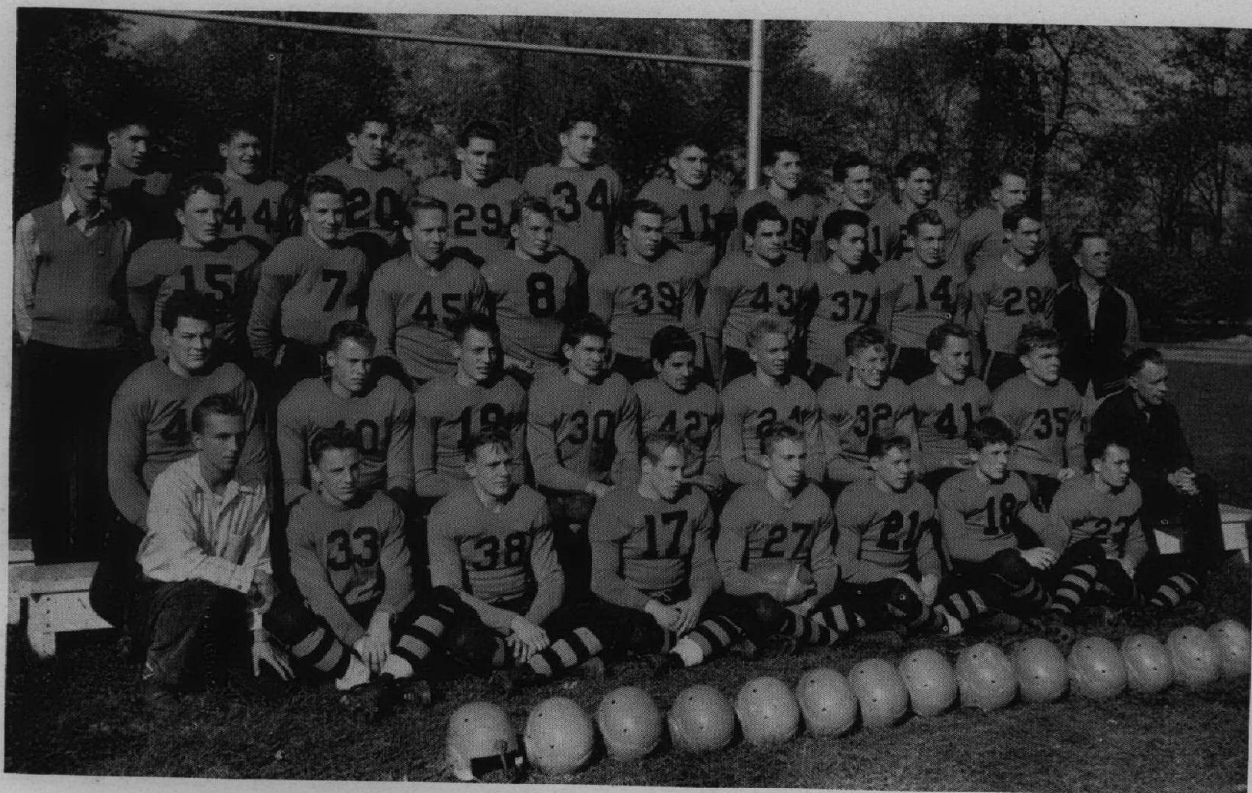
Nilis Township High School owes much to its Student-Faculty Forum. Each home room is represented by a Forum member, and through their members all students have a voice in school matters.

These students are learning more and more of democracy and the American way of life.

*Front row, left to right: Tom Wetmore, Dolores Johnson, Louis Robinson, Dorothy Lacy, Dick Fisher, Shirley Schmidt, Jane Schewe, Don Christensen.*

*Second row: Bill Kunkel, Jack Zimmerman, Dick Tait, Bill Witte, Frank Williams, Don Sandin, Mr. Benette.*

*Top row: Paul Jacobs, Bob Doetsch, Helen Conrad, Shirley Baumhardt, Don Speer, Lee Garner.*



First row, left to right: Jack Suydam, Manager, George Riva, O'lie Berens, Don Christensen, Stan Noesen, Bruce Cook, Bob Klump, Bob Mueller.  
 Second row: Jim Ehmer, Nick Bogner, Mars Bishop, Jim Harrer, Nick Boznos, Bob Farr, Ed Heartstedt, George Peschke, Bill Clynes, Coach Mackey.  
 Third row: Don Lyons, Dick Swanson, Don Fredrickson, Tom Stockenberg, Bob Doetsch, Ed Dean, Bill Witte, Bob Roman, Harold Engebretson, Coach Isaacson.  
 Fourth row: Ray Nelson, Manager, Paul Jacobs, Fred Bernard, Don Comstock, Sherrill McDonald, Don Falknor, Art Schmidt, Marty Alterini, Louis Nachbauer, Bill Abbink, Arnold Steif.

### Evanston 7, Niles 0

Forced to open the season with a comparatively green eleven, Head Coach Isaacson had stated before the opening game that he would consider the season successful if the boys scored even one touchdown. They didn't score this time, falling before the Evanston junior varsity for the first time in three years.

### Lake Forest 14, Niles 0

The Scouts obtained sweet revenge for their overwhelming defeat by the 1943 Trojan powerhouse. The game, featured by L. F.'s strong line and fleet backs, was seldom in doubt. Only in the final period did Niles threaten, but there wasn't enough drive to cross that final marker.

Outstanding school spirit carried a large crowd of Trojans to Lake Forest to see the game.

### Niles 19, Woodstock 0

Capitalizing on the breaks of the game, the Trojans scored their outstanding victory of the season. Alterini's run of 55 yards, after a pass interception, was the highlight of the game.

## Trojan Football Record

1944

Trojans	Opponents
0	Evanston J. V. 7
0	Lake Forest 14
19	Woodstock 0
12	Arlington 14
0	Libertyville 20
12	Crystal Lake 6
0	Leyden 0

### Arlington 14, Niles 12

So near, and yet so far! Those points after touchdown sometimes do mark the difference between a loss and a tie. The Arlington game was undoubtedly the roughest and "fightingest" of the season, with some of the Trojans being challenged to combat after the game.

### Libertyville 20, Niles 0

The Trojans were definitely outclassed by the powerful squad from Libertyville. Everyone had a good time during Hobo Day, but we couldn't match the zip of the Wildcats, undefeated for three years until this season.

### Niles 12, Crystal Lake 6

The Trojans entered the field against Crystal Lake definitely the underdogs. The Lakers were in the ball game all the way, and only fine defensive work spearheaded by Swanson and Dean turned them back.

### Niles 0, Leyden 0

This game might be classified as "much ado about nothing." Played for the most part in the rain, it did not reveal outstanding football on the part of either team. An unusual number of injuries further marred the game.

### Summary

Trojans: Won 2, tied 1, lost 4. Total points 43; opponents' total points 61.

# Trojans Fight

## The Players

**Fred Bernard, full-back, senior.** Fred didn't get much of a chance to show his real talents this year, due to pre-season injuries.

**Mars Bishop, half-back, senior.** Mars showed much promise at the close of the year, particularly on offense.

**Nick Bogner, tackle, senior.** Nick was a stalwart, dependable lineman.

**Don Christensen, full-back, senior.** "Chris" had a lot of drive and did most of the plunging for Niles. Here was a very conscientious boy who put all he had into every game. He was chosen honorary captain.

**Bill Clynes, tackle, senior.** Without junior football experience Bill, nevertheless, performed creditably at tackle.

**Ed Dean, center, senior.** "Emmy" was the outstanding defensive player in every Trojan game. He held up the line admirably and topped his abilities by being exceptionally alert on pass defense. He was chosen the most valuable player of 1944.

**Hal Engebretsen, half-back, senior.** "Engy" changed to half-back this year and showed real promise on defense. His best game was at Arlington.

**Don Frederickson, guard, senior.** Don was a dependable lineman right from the start, particularly strong on defense where his weight helped a lot.

**Ed Heartstedt, end, senior.** A fast boy well able to keep up with anything going around his side of the line, Ed was primarily a defensive player.

**Paul Jacobs, guard, senior.** "Jake" was out trying all year as center or guard, and when his chance came in the Leyden game, he performed well.

**Don Lyon, quarter-back, senior.** "Ned" was on the shelf most of this year due to a trick ankle. He showed signs of being a very able signal caller.

**Sherrill McDonald, end, senior.** "Mack" was a good player, especially adept at those breath-taking pass catches.

**Tom Stockenberg, tackle, senior.** Tom played an able tackle for the Trojans and excelled in inter-squad scrimmages.

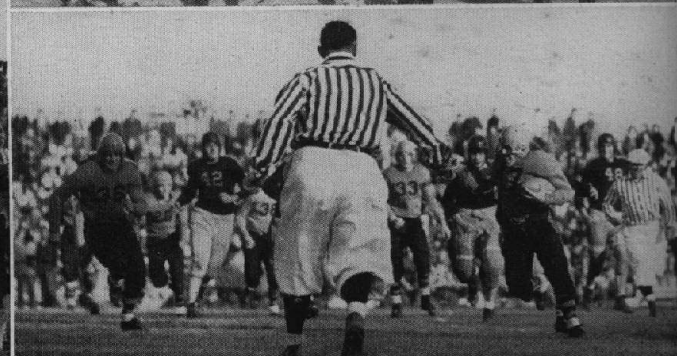
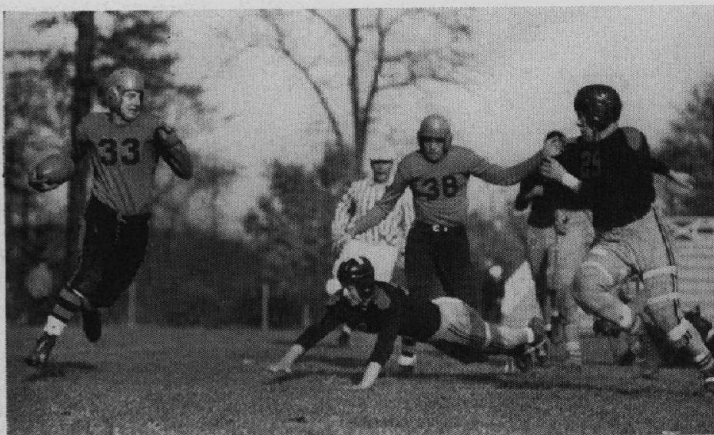
**Bill Abbink, end, junior.** Playing his first year at N.T.H.S., Bill attempted most of the team's tries for conversion and was particularly strong on offense.

**Marty Alterini, half-back, junior.** The speediest back on the Trojan squad, Marty frequently ripped off long gains; he was a hard tackler.

**Nick Boznos, tackle, junior.** Nick can well be summed up in two words—big and able. He's going to be very important in Mr. Ike's plans for next year.

*George Riha (33) is running into some opposition as part of his interference; Oliver Berens (38) is being taken out of the play. Their majesties are on parade. Sweeping (or perhaps straggling) past the grandstand on Homecoming Day, the "best dressed" young ladies and gentlemen of the Niles Township High School vie with one another for the honor of being Hobo King and Queen.*

*And here are their majesties! Attired in the latest styles are Dick Fuhr, King's Attendant; Virginia Kish, Hobo Queen; George Dyrssen, Hobo King; and Margaret Meindl, Queen's Attendant. It looks as if Don Christensen (17) is off for a touchdown jaunt in this picture, with Arnold Sieif (36) and George Riha (33) coming up to form interference. But Libertyville said no!*





## For Football Fame

**Don Comstock, center, junior.** Don's variations on backing up the line proved funny to everyone except opposing ball carriers.

**Bruce Cook, quarter-back, junior.** Having absorbed a world of experience in his junior varsity days, Bruce should really be ready to step next year.

**Bob Doetsch, full-back, junior.** "Miff" turned in some very satisfactory work on defense and was out there fighting in every game.

**Jim Ehmer, tackle, junior.** Jim, the heaviest man on the squad, played his best games against Woodstock and Leyden. With a little more speed he could be one of the best linemen in the conference.

**Don Falknor, quarter-back, junior.** Don's leg injury kept him from playing much of this season. He should fit in well with the T next year.

**Jim Harrer, tackle, junior.** Jim was a good tackle, fast on offense or defense.

**Bob Klump, center, junior.** A very conscientious worker out on the field, Bob should play center for the Trojans next year.

**Louis Nachbauer, half-back, junior.** Louie had the misfortune of being unable to play much ball this year, due to an ankle injury.

**Stan Noesen, guard, junior.** Stan was an aggressive, alert ball player who really liked to get in there when the going was tough.

*Plenty of Trojans are getting ready to toss this Libertyville runner for a loss. If he manages to escape Behrens and Engebretsen, Dean, the watchdog of the line, seems all set to spill him.*

*Will Riha's kick elude the clutching finger tips of the onrushing Wildcat from Libertyville? If not, Engebretsen seems ready to close in on the offending opponent with a necktie tackle.*

**George Peschke, tackle, junior.** "Junior" performed consistently throughout the season and was one of the more alert linemen.

**George Riha, half-back, junior.** Besides doing all of Niles' punting and being their best passer, "Gunner" also improved on his running and should really star next year.

**Bob Roman, end, junior.** Bob was exceptionally good at carrying the ball. He was also dangerous as a pass receiver.

**Arnie Steif, guard, junior.** A small, quiet player, Arnie nevertheless showed ability all year. He helped most when the chips were down.

**Dick Swanson, end, junior.** Showing remarkable improvement, "Swanny" reached his peak at the Crystal Lake game.

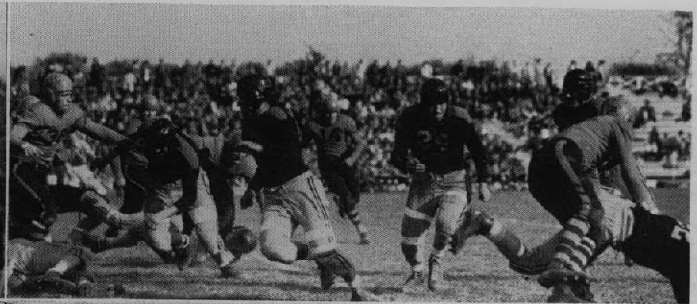
**Ollie Berens, guard, sophomore.** By showing his ability early in the season, Ollie clinched a varsity berth. He played alert ball.

**Bob Farr, half-back, sophomore.** Bob played good football this year, with speed as his biggest asset. His best game was against Woodstock, in which he scored twice.

**Bill Witte, quarter-back, sophomore.** Bill took over the varsity chores when Christensen was switched to full-back. He was a heads-up player.

*Behind three-man interference a Libertyville back seems to be headed goalward, despite sturdy Trojan opposition. Both Behrens and Swanson are just about to be taken out of the play.*

*The Hobo Day band plays. No, these are not the regular suits of the Trojan band, which participated in the day's festivities.*



## Junior Varsity

First row, left to right: Jay Fuller, Jim McNeely, Frank Williams, Bill Walmsley, Don Nepstad, Dick Fisher, Lloyd Seltzer, Jerry Whalen.

Second row: Mr. Mackey, Dave Straw, Dave Wilkinson, Roger Lofgren, Joe Toth, John Crawford, Bob Boehning, Bob Pearson.

Third row: Louis Robinson, Al Miller, Howard Lindstrom, Forest Cole, Ray Baumgartner, Roger Racine.

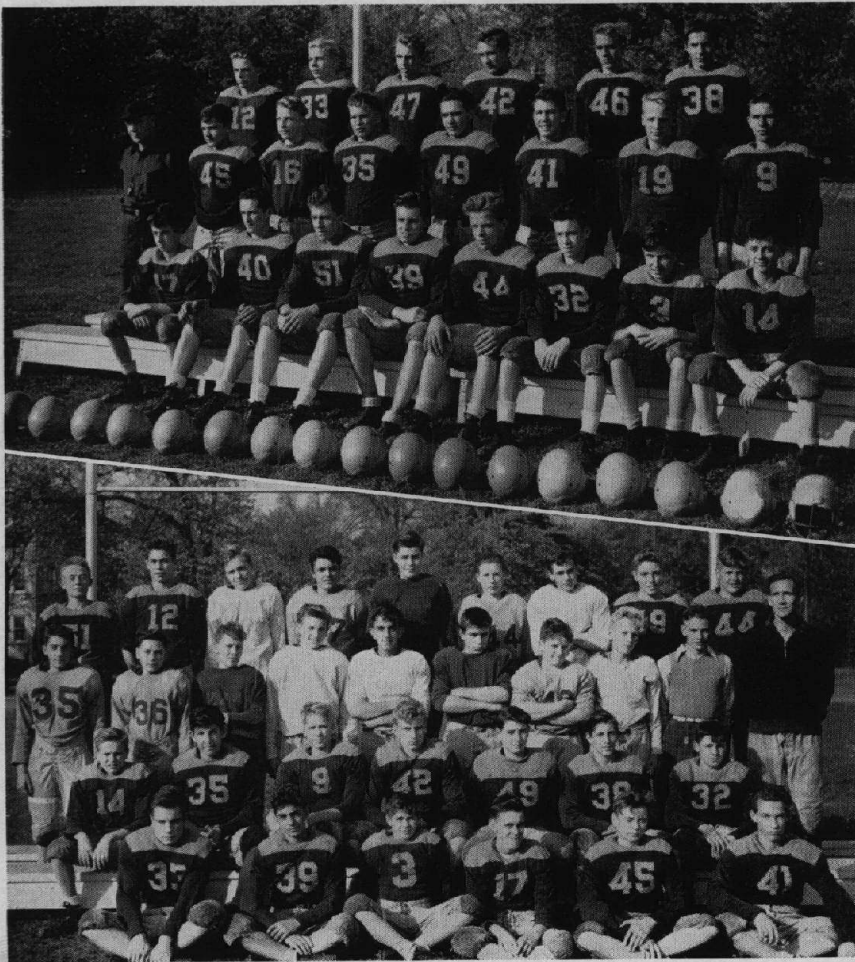
## Freshmen

First row, left to right: Bill Kelley, Jim Koburi, Ed Soergel, Bob Burke, Don Mason, Ronald Bair.

Second row: Howard Robbins, Ed Kadlec, Lawrence Hall, Dick Sembach, Howard Korsmo, Chuck Barrett, Ted Marras.

Third row: Don Paollela, Richard Grochowski, Ed Kutz, Herb Jones, Clay Wieder, Jim Heiniger, Ed Linskey, Stanley Anderson, Harry Weigt, Coach Rickard.

Fourth row: Lee Garner, Bill Comstock, Don Carlson, Jack Schultz, Noel Kiefer, Roger Coverley, Ray Hoglund, Tom Fitzgerald, Lyle Dye.



### Junior Varsity Football

1944

Niles		Opponents
6	Maine Frosh	0
0	Leyden	7
0	Evanston	24
27	Maine Frosh	15
16	Crystal Lake	0
6	Leyden	6

### Freshman Football

1944

Niles		Opponents
7	Maine	0
19	Arlington	0
6	Evanston	12
13	Maine	0
21	Arlington	0
0	Evanston	21

## Jay Vee Season

Fleet half back Don Sandin led the junior Trojans in their win over Maine, 6-0. . . . The Evanston game proved to be a one-sided contest as the Wildkits racked up 24 to 0 for us. . . . Leyden beat the Jay Vees for the second setback, 7-0. Fumble-itis affected the Trojans. . . . A much improved line was a large factor in the win over Arlington, 20-0. . . . The third win was a repeat performance against Maine, this time by a wider margin, 27-15. . . . Opening the nocturnal double header against Crystal Lake, the little men of Troy did all right for themselves by a decisive 16-0 win. . . . Aiming at sweet revenge in the return engagement with Leyden, the Trojans had to be content with a tie, 6-6. . . . Next year they'll go into big time competition. . . .

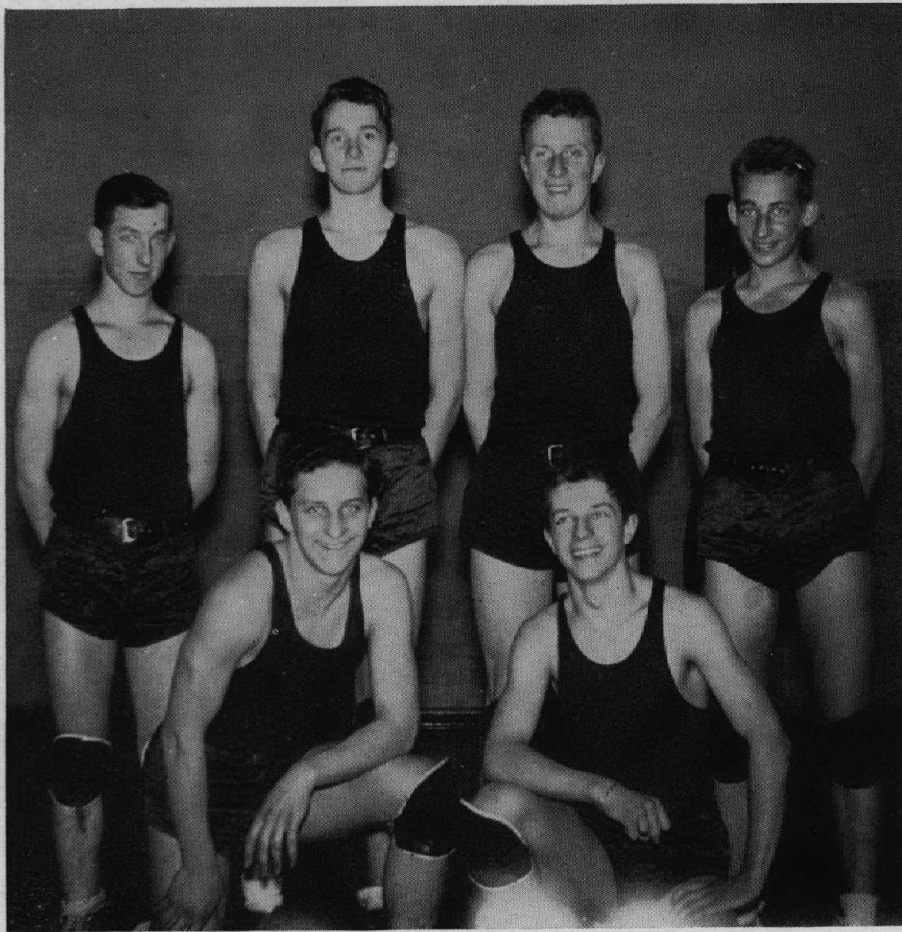
## *Varsity Basketball Squad*



*First Row: Henry Mayeda, Walter Zust, Art Anderson, Louis Nachbauer.  
Second Row: Mr. Mackey, Herb Mueller, Ernest Reimann, John Lane, Frank Williams, Bill Kunkel, Don Falknor.*

### *How They Won*

PLAYER	G.	F.G.	F.T.	P.F.	Points	Pct.	Ave.
Williams	17	55	30	44	140	.486	8.2
Anderson	24	63	48	54	154	.672	6.8
Lane	24	51	25	59	129	.438	5.4
Zust	24	40	33	32	113	.528	4.7
Mueller	23	40	24	20	104	.485	4.5
Nachbauer	24	28	39	46	95	.546	3.95
Falknor	21	8	7	36	23	.210	1.1
Reimann	16	3	5	19	11	.323	.7
Mayeda	7	2	0	2	4	.123	.6
Kunkel	17	4	2	6	10	.250	.59



## Regional Champs

The Trojan big six, Nachbauer, Zust, Anderson, Lane, Williams, and Mueller, were the boys who brought home the bacon in the shape of the 1945 regional championship.

## The Squad

The players on the varsity basketball squad were Arthur Anderson, Don Falknor, Bill Kunkel, John Lane, Henry Mayeda, Harry Mueller, Lotis Nachbauer, Ernest Reimann, Frank Williams, and Walter Zust.

### REGIONAL AND SECTIONAL BASKETBALL RECORD

1945

Trojans	Opponents
35	Evanston 34
32	Libertyville 29
41	Waukegan 33
	Sectional
33	Wheaton 47



## Junior Varsity Basketball Team

Front row, left to right: Forrest Cole, George Riha, Lucien Di Salvo, Ted Stockfisch, Kenny Stezskal.

Second row: Mr. Isaacson, John Kokum, Herbert Behrens, Bob Farr, Stewart Munroe.

## Freshman Basketball Team

Sitting, left to right: Gordon Anderson, Jim Heiniger, Bill Comstock, Lee Garner, Don Biehn, Howard, Siegel.

Kneeling: Louie Triebold, Edwin Soergel, Jim Blessing, Eugene Suckow, Sam Boznos, Ronald Bair, Edward Kutz, William Permer, Louis Hennig, William Neuson.

Standing: Don Brown, Edward Linskey, Eugene Davis, Charles Barrett, Robert Brownell, Bob Helton, Don Carlson, Roger Coverley, Clayton Merrill, John Kranz, Coach Kiviluoma.



# Trojan

## Basketball Record

### 1944-45

Trojans	Opponents	Trojans	Opponents
24	New Trier	46	55 Lake Forest
25	Highland Park	48	52 Arlington
17	Waukegan	36	29 Libertyville
36	Warren	25	33 Maine
35	Leyden	41	43 Lake Forest
36	Crystal Lake	50	48 Warren
36	Evanston	42	59 Crystal Lake
33	Dundee	41	48 Leyden
29	Libertyville	36	27 Evanston
38	New Trier	44	36 Zion
38	Woodstock	27	

#### JAY VEE RECORD FOR '44-'45

Trojans	Opponents
38	New Trier
30	Highland Park
25	Waukegan
32	Warren
28	Leyden
36	Crystal Lake
29	Evanston
36	Dundee
26	Libertyville
24	New Trier
49	Woodstock
37	Lake Forest
33	Arlington
23	Maine
30	Libertyville
30	Lake Forest
24	Warren
40	Crystal Lake
27	Leyden
31	Evanston
26	Zion
Won..... 15	Lost..... 6

#### FROSH BASKETBALL RECORD 1944-45

Trojans	Opponents
21	New Trier
15	Waukegan
20	Maine
17	New Trier
27	Highland Park
20	Evanston
29	Maine
12	Waukegan
17	Evanston
Won..... 2	Lost..... 7



## Poor Opener

The Trojans opened their basketball season against New Trier with a one-sided game, 46-24.

## Still Trailing

Highland Park administered Nilehi's second beating by another wide margin.

## Third in Row

The Waukegan Bulldogs were the third team to punish the Trojans severely. The Mackeymen could score only 17 points.

## Bright Spot

Our first conference game against Warren also brought our first win of the season, 36-25. Maybe Lady Luck would smile—

## Stormy Sailing Ahead

— But she didn't. Leyden, Nilehi's victim for nine years of basketball, finally turned the tables, 41-35.

## Back in the Doghouse

Crystal Lake didn't make Trojan fans any happier by grabbing 50 points while limiting us to 36.

## Basketball

*For Niles: John Kokun, Frank Williams.*

## Cross Country

*Front Row: Hank Meinke, Joe Wettingel, Ray Carlson, John Kranz.*

*Second Row: Bud Reifenberg, Frances Clynes, Mr. Van Arsdale, Ed Meyer, Eugene Schultz.*

## Wildkits Keep It Up

Speed was the keynote of the Evanston offense that ran over, around, and through Niles. Only six points spelled defeat.

## Big Time Dundee

Dundee, always an outstanding team in state standings, handed the Trojans another loss.

## What's the Matter With the Trojans?

About this time, local fans began asking the above question. Libertyville edged us, 36-29.

## What, Again?

New Trier did it again, 44-38. This was the first time in three years that the Trojans had failed to break even with the Green Wave.

## Oh, Happy Day!

The Woodstock win started us on our way. Up to now, it had been nine losses out of ten starts.

## This Was Brutal

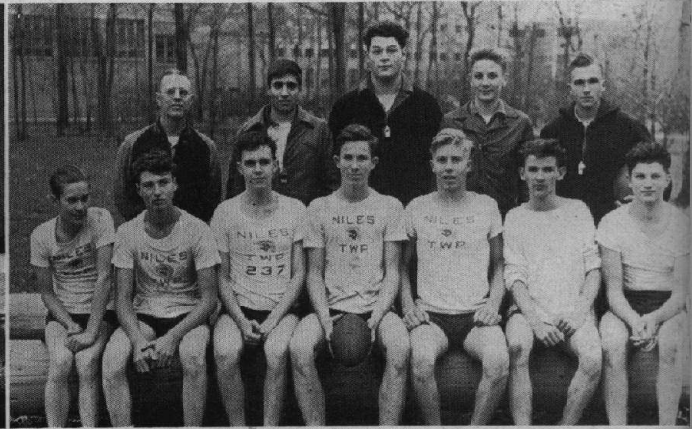
Point starved for so long, the Trojans really turned on the heat in routing a hapless Lake Forest five, 55-29.

## Touchball Champs

*Front Row: Dick Hedstrom, Tom Birong, Bob Dammann, Bill Kunkel, Al Miller, Bob Hollow, Peter Schuster.*  
*Back Row: Mr. Isaacson, Paul Jacobs, Jim Ehmer, Dick Swanson, Jack Suydam.*

## Mr. Ike's Helpers

*Seated: Mr. Isaacson.*  
*Standing: Ernest Reimann, Don Christensen, Jim Tagney, Joe Paoell, Art Anderson.*



# In Year Round Sports

## Up From the Depths

The mighty Cardinals, atop the heap, felt the wrath of the Niles Five—a decided upset, 52-34.

## Sweet Revenge

Two points sent the Libertyville quintet back home defeated. It was number four for Niles.

## Maine Mauled

Another comeback from an earlier defeat was registered at Maine's expense. Again the Trojans won by two points.

## Scouts Scalped

Niles left no doubt in the minds of anyone about this game. Number six showed we really had a powerhouse.

## Once More

Warren fell for a second time, 48-24. Again the game was in the bag all the way.

## Good One!

Crystal Lake had fought its way up to the conference top before this game. A 59-34 beating by Niles brought them down a peg or three.

## Swimming

*Front Row: Charles Massman, Alf Johnson, Bill Clynes, Ted Ebert, Bob Hartney, Ed Peters.*

*Back Row: Mr. Rickard, Eugene Hegarty, Ken Bennett, Don Lyon, Jim Tagney, Thayne Sando, Manager Allen Heim.*

## Golf

*Kneeling: Bob Dombrowski, Gene Hegarty.*

*Standing: Coach Kiviluoma, Horace Lindecker, Allen Karlqv, John Aliprandi, Lou Nachbauer.*

## As It Should Be

Leyden couldn't repeat their surprise win earlier in the season. Number nine in the string.

## Meanies From Evanston

The Wildkits weren't impressed by the nine straight wins and mauled the Trojans badly.

## Back in the Groove

Zion closed the season by bowing before Niles, 36-30.

## Summary

Northeast Conference: Nine wins, three losses. Co-Champions for 1944-45.

Other games: Two wins, seven losses.

## Baseball

*Front row, left to right: Don Biehn, Harold Springer, Bob Roman, Paul Jacobs, Fred Bernard, Ken Bennett, George Messner.*

*Second row: Ronald Jones, Ed Meyer, Jerry Burke, Don Olson, Uno Larson, Bill Anderson.*

*Third row: Coach Isaacson, Ed Dean, Joe Pennacchia, Herb Jaehuke, John Lane, Ernie Reimann, Bill Kunkel, Art Schmidt, Bob Bierbaum, Sherrill McDonald, manager.*

## Track

*Front row, left to right: Jim Heiniger, Bob Pearson, Jack Suydam, Philip Horton, Joe Wettengel, Henry Meinke, Philip Brice.*

*Second row: Elmer Valkenaar, Russell Skallerup, Martin Alterini, Jim McNeely, Mars Bishop, Jim Ehmer, Frank Williams, Bill Walmsley, Bob Farr, Francis Klein, Coach Rickard.*





Varsity Team  
 In Action  
 Carnival Council  
 Watch the Birdie

A Basket  
 Close Harmony  
 Splash!  
 Leaders

Made It!  
 Football  
 Jug Wilson  
 Ball Players

*Athletically Apt*



# Physically Perfect

*Water Carnival Beauties*

*Show Boat*

*Freshmen Cinder Fellas*

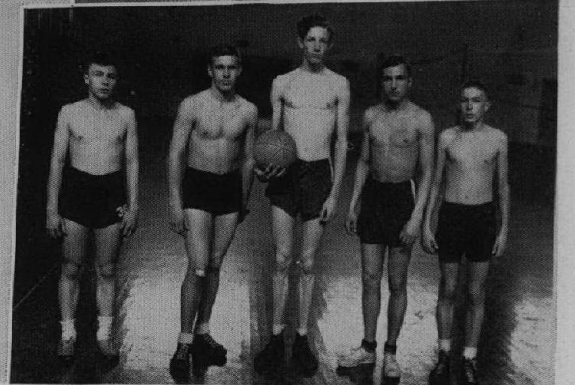
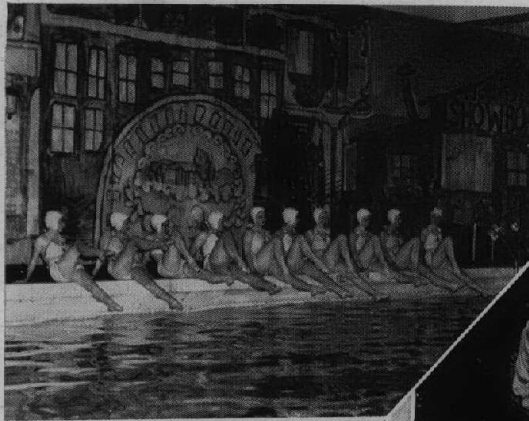
*Fifteen for the Team*

*Jack Takes Off*

*Us Chilluns is Waitin'*

*Stan's Stand Seems Shaky*

*Intramural Champs*



# Five Good Men



*Standing: Mr. Mackey, Mr. Rickard, Mr. Kiviluoma, Mr. Van Arsdale. Seated: Mr. Isaacson.*

## Mr. Ike

Director of athletics, head football and baseball coach, and junior varsity basketball mentor—yes, all these jobs are held by one man, Mr. Harold Isaacson.

This fall he took a green football team into the Northeast Conference. While the Trojans didn't set the world on fire, they did push across two wins and lost another by only two points. A strong junior varsity and freshmen team should help Mr. Ike work some of his old magic next year.

During the winter Mr. Ike also guided the junior varsity basketball team to the conference championship, despite the fact that the varsity took over his leading point-maker early in the season.

Then spring brought in baseball, and the versatile Trojan had another big job on his hands. It isn't easy to handle a group of thirty boys without any assistance, but Mr. Ike did it again!

## Mr. Mackey

Coach Bob Mackey came into the limelight last winter, when his team mopped up all conference opposition, emerging as co-champions of the loop. The Trojans really reached the heights, however, by winning the Waukegan regional.

Coach Mackey rounds out his sports activities by directing the fortunes of the junior varsity football team and the freshmen baseball squad.

## Mr. Rickard

This year's successful swimming squad was under the direction of Mr. Rickard, who is spending his first year at N.T.H.S. His freshmen football team would have had the record of having beaten every opponent, had it not been for Evanston. Under his direction four school track records were broken this spring.

## Mr. Kiviluoma

Mr. Kiviluoma proved that he knew something other than cube roots by coaching the freshmen court cavorters and bringing back golf to Niles Township. Here was another coach making a fine record in his first season with us.

## Mr. VanArsdale

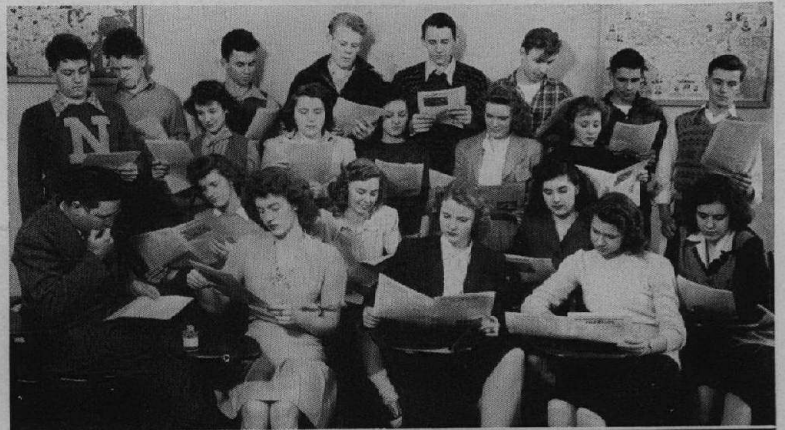
Mr. VanArsdale was in charge of this year's cross-country squad. He was the third of our trio of excellent first-year coaches.

## Nihilite Staff

Determined to outdo last year's staff, which won N.S.P.A. first-class honors for the *Nihilite*, this year's group is seen trying to figure out how to make an All American rating.

Front row, left to right: Mr. Blanke, Shirley Rohrer, Barbara Horton, Shirley Lawrence, Muriel Hendrickson, Jerrie Rochow, Lorraine Shade, Beverly Markus.

Second row: Fred Bernard, Bob Marquette, Betty Weldon, Ed Fisher (first semester member), Joan Flavin, Bill Harris (first semester member), Rence Hain, John Lane, Lois Heiniger, Herbert Jarosch, Beryle Schwabe, Stanley Martin, Gary Oakley.



## Reflections Staff

"How do you spell that name?"  
"Have you found his picture yet?"

These and a multitude of other questions have been asked and answered this year in room 214, headquarters of the senior-faculty section of the yearbook staff. Although the workers in this group were few, their labors were mighty.

Front row, left to right: Dolores Johnson, Rosemary Lutz, Ann Marie Schirra, Pat Lannert.

Second row: Miss Blaxson, Shirley Gregor, Bernice Stoll, Dorothy Lacy, Virginia Kish, Beverly Pearson.



Financiers of high degree are the young ladies in this picture. Besides conducting two drives for the sale of the yearbook, they found time to run the biggest show of the year, *Reflections Revelry*, and to help out with two dances sponsored by the staff for the benefit of their beloved yearbook.

Left to right: Miss Sayre, Nancy Perrin, Shirley Rohrer, Mary Francis Dietsch, Dorothea Wolcott, Hildegarde Jarosch.



"If you like the book, tell others; if not, tell us" might well be the motto of this group, responsible for the underclass and general activities sections of the annual. Layouts, copy, galleys, and proofs kept them busy throughout the year.

Front row, left to right: Bob Marquette, Fred Bernard, Barbara Horton, Beverly Markus.

Second row: Nancy Hall, Mr. Blanke, Mary J. Brandt.

Additional Staff Members: Shirley Lawrence and June Maier.

Staff Photographer: Nick Boznos.



## *Acknowledgements*

For their help and guidance we wish to express our grateful appreciation to the following faculty members: Mr. C. W. Blanke, Miss Doris Sayre, Miss Adelaide Berry, Miss Bonita Bloxsom, Mr. Albert W. H. Ashworth, and Mr. T. W. Stewart.

Engravings by Pontiac Engraving Company

Printing by Neely Printing Company

Special Photography by Root Studio

*The Staff*