

APPRAISAL

August 18, 1999

L1999.02.52

LAMP, brass and glass.

A hanging lamp on six chains - three inner and three outer - with a raspberry-tinted, irregularly shaped, globe. The ceiling mount with a repoussé disk, from which the chains and an electrical wire are suspended. The three outer chains attach at the lower end to three acanthus-styled, C-scroll ears - mounted around an openwork band at the waist of the globe. The base of the globe has a domed finial-form cover with fluted surface, the pattern of the waist band and a lower ring. The upper globe cover also has the pattern of the waist band. The globe interior has a lobed surface.

Approximately 41" long.

American, late 19th cen.

\$1,200.00



Paul E. Sternberg

PAUL E. STERNBERG, SR.
APPRAISER
2120 Cornerstone Lane
Marietta, Georgia 30064

APPRAISAL

August 18, 1999

L1999.02.03

LAMPS (three: a pair and a single), bronze with gilding and glass.
The single astral lamp with a pair of Argand burners. The two other lamps with single Argand burners. The blown, etched and cut-glass shades with floral patterns.

a. The astral lamp with a central column surmounted by a large urn-form oil tank with upper finial. Two curving side arms end in Argand burners. The arms are surmounted by S-scroll bracket decorations. The lamp stands on a tricorner plinth base, with S-scroll and flower decorations at the corners. 19 1/2" high (without shade) x 17 5/8" wide.

European (circa 1860)

b. The pair of lamps with upper tank over urn-form column and square plinth base. The tank with relief designs - inside a peripheral, gilded, anthemion-patterned ring, from which double drops are suspended. The plinth sides with a gilded floral medallion. The tiered base on four button feet. 13" high x 5' diameter.

European (circa 1860)

\$2,400.00 (a)

\$3,200.00 (b) the two

\$5,600.00 the lot



Paul E. Sternberg
PAUL E. STERNBERG, SR.
APPRAISER
2120 Cornerstone Lane
Marietta, Georgia 30064

APPRAISAL

August 18, 1999

1998.17.5

LAMP, brass, glass and marble.

A brass columnar lamp with a wide top and plinth base. The tubular chimney inside a wide pyriform shade - the shade with piecrust top and floral decoration. Thirty, double, star and flower-cut prisms hang from the shade ring. The fluted pedestal on a square plinth base with two tiers of white marble and a brass molding around the upper tier. The oil tank removed. Fitted for electricity.

26 5/8" high x 11 1/2" diameter.

American, mid 19th century.

\$550.00



Paul E. Sternberg
PAUL E. STERNBERG, SR.
APPRAISER
2120 Cornerstone Lane
Marietta, Georgia 30064

APPRAISAL

August 18, 1999

1998.08

ASTRAL LAMP, brass, glass and marble.

A two-arm lamp with Argand burners, which stands on a pedestal and plinth base. The burners with period tubular chimneys and pyriform shades in a flower and foliage design. The central tank surmounted by a finial - all over a fluted columnar pedestal. The two arms with upper brackets in an acanthus motif. The plinth with two square tiers of marble, a brass molding around the upper tier, and a brass base on four bracket feet. With double, star-cut prisms suspended from the top of the tank and around the base of the lamps.

23 1/8" high x 18 1/4" wide.

American, mid 19th century.

\$2,800.00



Paul E. Sternberg

PAUL E. STERNBERG, SR.

APPRAISER

2120 Cornerstone Lane
Marietta, Georgia 30064

APPRAISAL

August 18, 1999

1998.20.01

KEROSENE LAMP, brass, metal and glass.

A tall brass and metal lamp with elaborate Rococo styling. The lamp section with newer chimney inside a newer globular shade. The column in baluster form, with upper tank surrounded by relief metal work in a scrolling acanthus and paisley motif. The stylized narrow central stem above a brass globe with an edge band in a bead pattern. The foot on four legs with detailing similar to the upper relief work, also incorporating cabochons. Fitted as an electric lamp. The non-brass areas reportedly polished to the base metal to remove badly worn plate.

34 3/8" high.

American, late 19th century.

\$375.00



Paul E. Sternberg

PAUL E. STERNBERG, SR.
APPRAISER
2120 Cornerstone Lane
Marietta, Georgia 30064

APPRAISAL

August 18, 1999

1997.04.03

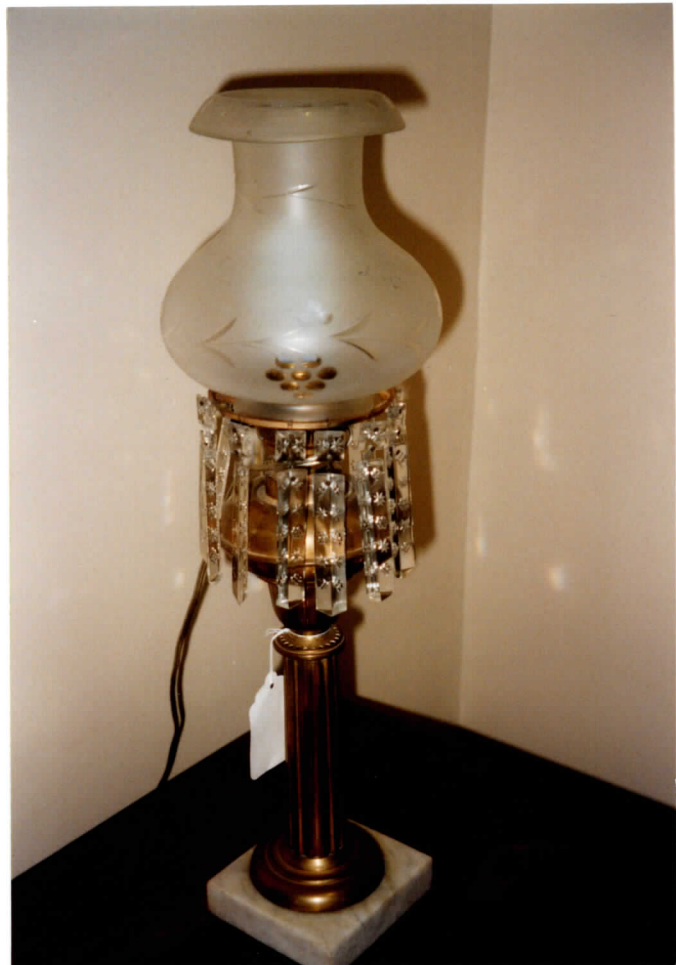
OIL LAMP, brass, glass and marble.

A tall brass columnar oil lamp with upper glass shade and marble base. The newer pyriform shade with drooped rim. The columnar stem with fluted sides. Ten double star-cut drops hang from a ring around the base of the shade (supposedly added at the time of electrification). The column with a flanged foot on a square marble base. Fitted as an electric lamp.

21" high with shade.

American, 19th century.

\$500.00



Paul E. Sternberg
PAUL E. STERNBERG, SR.
APPRAISER
2120 Cornerstone Lane
Marietta, Georgia 30064