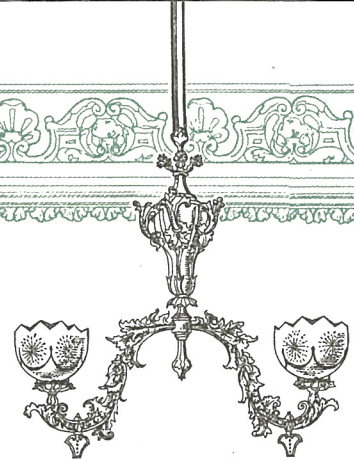
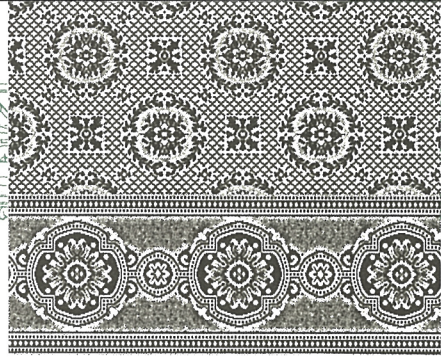
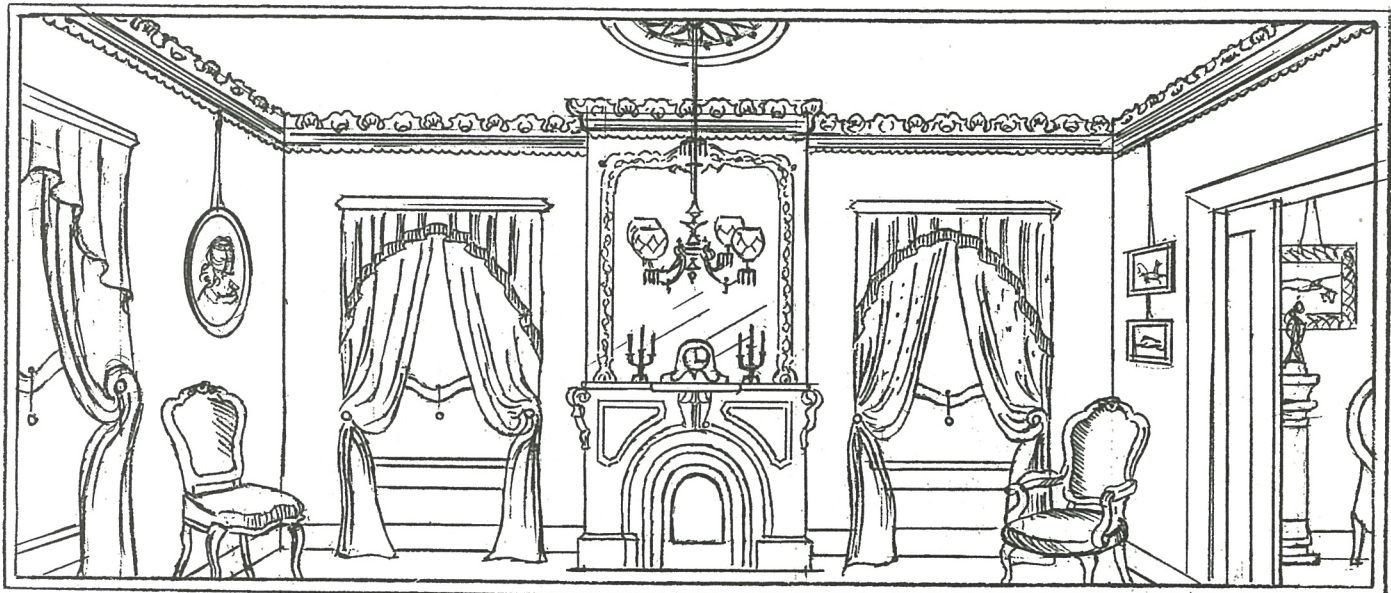


USE ca. 1850 PATTERNED FITTED CARPET IN CENTRAL HALL. USE PERIOD ORIENTAL AREA RUGS IN SIDE ROOMS.



ca. 1850s-era Vision of Lyndon House Double Parlor Rear Room after Rehabilitation



INSTALL LIGHT FIX

Prominent Furnishings of Athens Origin Have Special Significance

Style and Period of Furnishings and Accessories Being Solicited for Heritage Rooms.

Entrance Hall and Double Parlor, and Patron's Hall

(period interpreted the mid-1800s or Ware family era)

- Mahogany, walnut or rosewood Rococo parlor furniture and accessories (c. 1840s-1860s)
- Mahogany or rosewood American Empire for parlor hall or dining room, furniture and accessories (c. 1840s-1850s)
- Gothic or Renaissance period mahogany, oak or rosewood for parlor, hall, or dining room, furniture and accessories (c. 1850s-1860s)

Side Rooms and 2nd Floor Hall

(period interpreted mid- to late-1800s or Lyndon family era)

- Renaissance and East Lake period furniture and accessories would be appropriate for these rooms (c. 1860s-1890s)

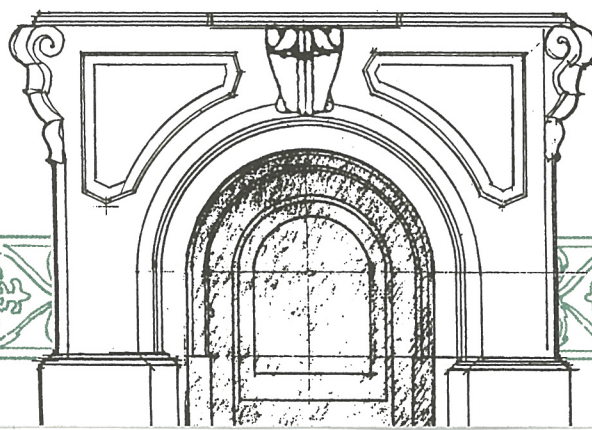
Itemized List of Furniture & Accessories Being Solicited for Donation & Loan

- | | | |
|--|--|-------------------------------------|
| • Chairs | • Etageries | • Old Paris porcelain |
| • Sofas | • Foot stools | • Silver accessories |
| • Desk | • Side boards | • Mantle clocks |
| • Tables (center, drop-leaf, dining pier, and console) | • Period art | • Gilded cornices |
| • Book cases | • Period photos (especially of early Athens and Lickskilllet area) | • Period china |
| • Coat racks | • Period books | • Over-mantle mirrors |
| • Pedestals | • Girandole sets | • Period cast-iron garden furniture |
| • Square piano | • Period lamps | • Period porch furniture |
| • Secretaries | | • Period Oriental carpets |

Guidelines, complete description & illustrations of period furniture & accessories available upon request - call Ron Evans (706) 548-8789.

ORIGINAL CHIMNEYS, PL. ROOF.

REPLACE MISSING ITALIANATE MARBLE FIREPLACE MANTELS.



USE ROCOCO REVIVAL OVER-MANTLE IN DOUBLE PARLOR.