

CONCEPT

FOR A

GARDEN AT THE WARE-LYNDON HOUSE

Athens, Georgia

WARE-LYNDON HOUSE BOARD OF DIRECTORS

July 2009

CONCEPT FOR A GARDEN AT THE WARE-LYNDON HOUSE

Athens, Georgia

The Board of Directors of the Ware-Lyndon House

Background

The Ware-Lyndon House, circa 1850, is listed on the National Register of Historic Places and was built by the first Mayor of Athens, Dr. Edward R. Ware. In 1880 it was purchased by Dr. and Mrs. Edward Lyndon. Today it is owned by Athens-Clarke County and is part of a large public art center. The house is a two-story brick house designed in the Greek Revival and Italianate styles. It has been carefully restored and is a popular destination for history-based tourism.

The Ware-Lyndon House crowns a ridge at the north end of Jackson Street in Athens at the intersection with Hoyt Street. Its front facade and porch face south toward the historic center of downtown Athens. Its front yard is a lawn with scattered trees and a central walk to the street. It is historically plausible to imagine there may have been some decorative flower beds at some point in this front area, but this is not known. Decorative front yard gardens were not uncommon among comparable contemporary houses in Athens and the surrounding region. One of these was at the Stevens Thomas house, which was built in 1848 on Pulaski Street in Athens. It was created in 1848 by John Bishop, an English landscape gardener who was in charge of the University of Georgia's Botanical Garden. Although the garden was ultimately destroyed, when the house was physically relocated, there is good documentation of the its layout and plants.

Concept for a Garden

The Board of the Ware-Lyndon House proposes a garden be created between the front of the Ware-Lyndon house and Hoyt Street, and that its design be based on key historical attributes of the former Stevens Thomas garden, which is believed to be comparably applicable to the setting of the Ware-Lyndon House. The purpose of this garden is to further the mission of the Ware-Lyndon House to interpret its historical period in the region. The garden is proposed as a history-based landscape which will complement the historical house and be actively interpreted to enrich the experience of visitors, which is central to the mission of the Ware-Lyndon House Board of Directors.

Attributes of the Stevens Thomas Garden

The following attributes of the Stevens Thomas garden inform the proposed garden for the Ware-Lyndon House:

- The main entrance to the house from the street is through the garden, making it an important part of a guest's arrival experience.
- The garden bears an axial symmetry and orientation to the house and the street.
- The garden is adjacent to the front porch and is an important extension of the house's public rooms and social functions. It can be passively enjoyed from the porch or actively used for socializing. Conversely, the private, working side of the house is to the rear.
- The garden consists of a hedged rectangular perimeter with ornamental parterres within. Their paisley shapes, while novel at the time, were part of an emerging Victorian aesthetic affecting architecture and landscape.
- The formal garden sits within an informal parkland of lawn and scattered trees and shrubs.

Description of the Proposed Garden

Following the precedent of the Stevens Thomas garden, the Ware-Lyndon garden is a formal hedged garden on a level terrace situated between the house and the street and is part of the arrival sequence. A brick walk and stairway lead up from Hoyt Street to the garden. Its axis passes through the garden to the steps of the porch and the center hall of the house. Within the garden's hedged perimeter is a symmetrical pattern of parterres, filled with ornamental flowering plants. Their geometry is dominated by the distinctive paisley shapes that were part of the Stevens Thomas garden. Between the parterres is a tan field of gravel. The garden's central focal point is a cast iron fountain or urn. On the sides seats and urns are also cast iron. Like the Stevens Thomas house, the porch at Ware-Lyndon looks over the oriental rug like patterns of the garden terrace, which will function as an extension of the house's social rooms. People will move easily between the house and the garden. Measuring 85 feet by 55 feet, the garden terrace will accommodate large gatherings. Tree and shrub planting along Hoyt Street will shape the view from the porch by giving the formal garden a leafy backdrop and screening the view of the nearby fire station. It will also give a sense of entrance to the house and garden from Hoyt Street. The existing parkland of

lawn and scattered trees to the west of the garden is consistent with the garden setting of the Stevens Thomas house.

Interpretation

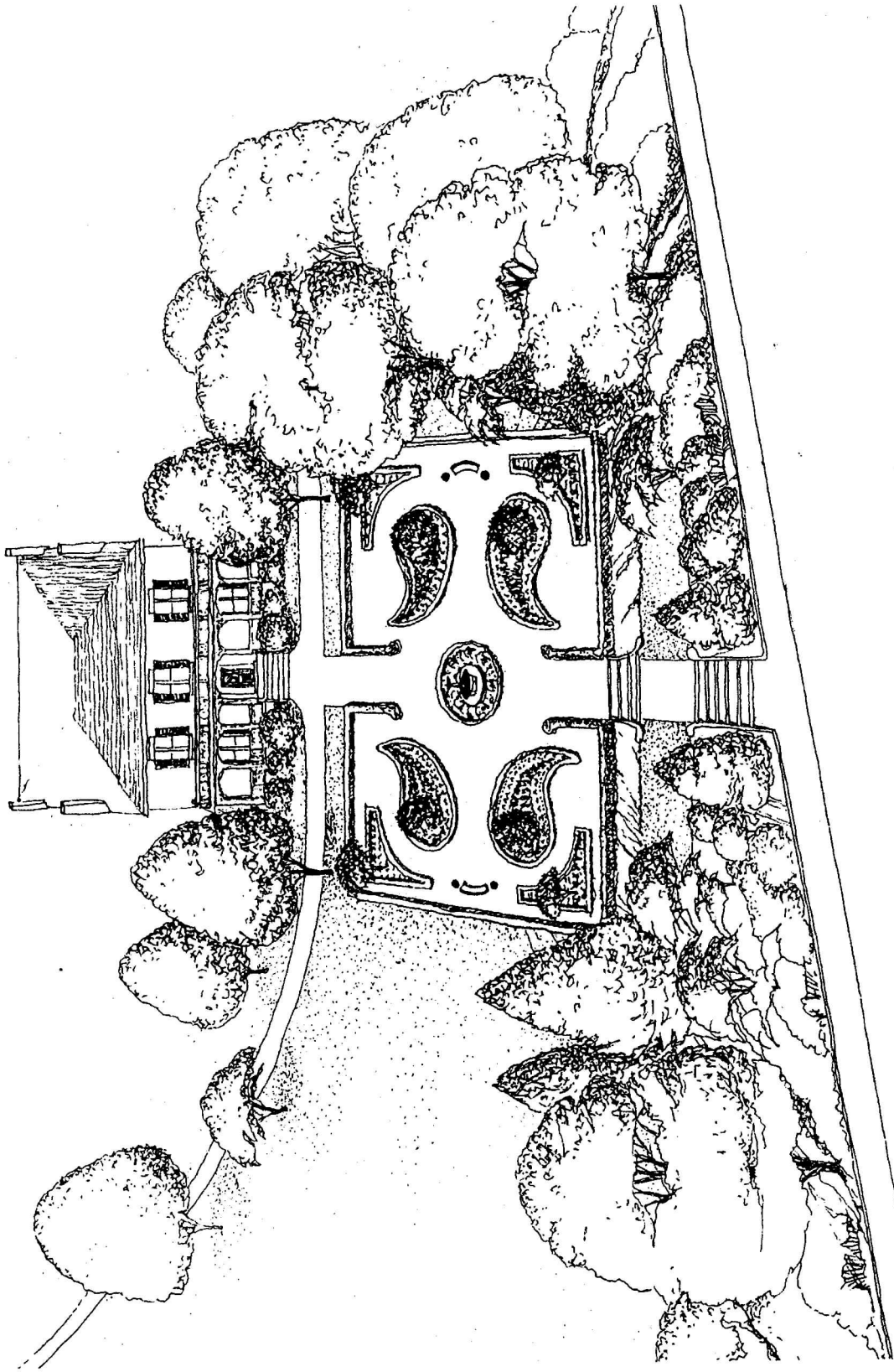
Educational displays in the house and garden will inform visitors about the garden's historically-based design and its horticulture. It will be clearly stated that the garden is not an original part of the historical setting of the Ware-Lyndon House's, but has been built as part of its public mission to educate its visitors about the historical context of Athens. Interpretation will highlight the historical attributes that underpin the garden's design, horticulture and relationship to the house. With a folio of mid-nineteenth century gardens it will highlight the special relationship that existed between a house and its landscape.

Cistern Concept for Garden Sustainability

A cistern is proposed to harvest water to supply the garden's irrigation system and water feature. It will be discretely located to collect water from the roof of the house and the art center, as well as from the complex's air conditioning system, which in the summer is estimated to produce 250- 500 gallons of water per day. This means the garden will not rely on city water. The cistern, while itself hidden will be a featured part of the garden's interpretive display on sustainability and wise water use.

Summary

The Board of Directors of the Ware-Lyndon House envisions a new garden, based on appropriate historical garden attributes, to be created at the Ware-Lyndon House. Its purpose is to complement the setting of the Ware-Lyndon house and to contribute to its role in education, tourism, and service to Athens-Clarke County.



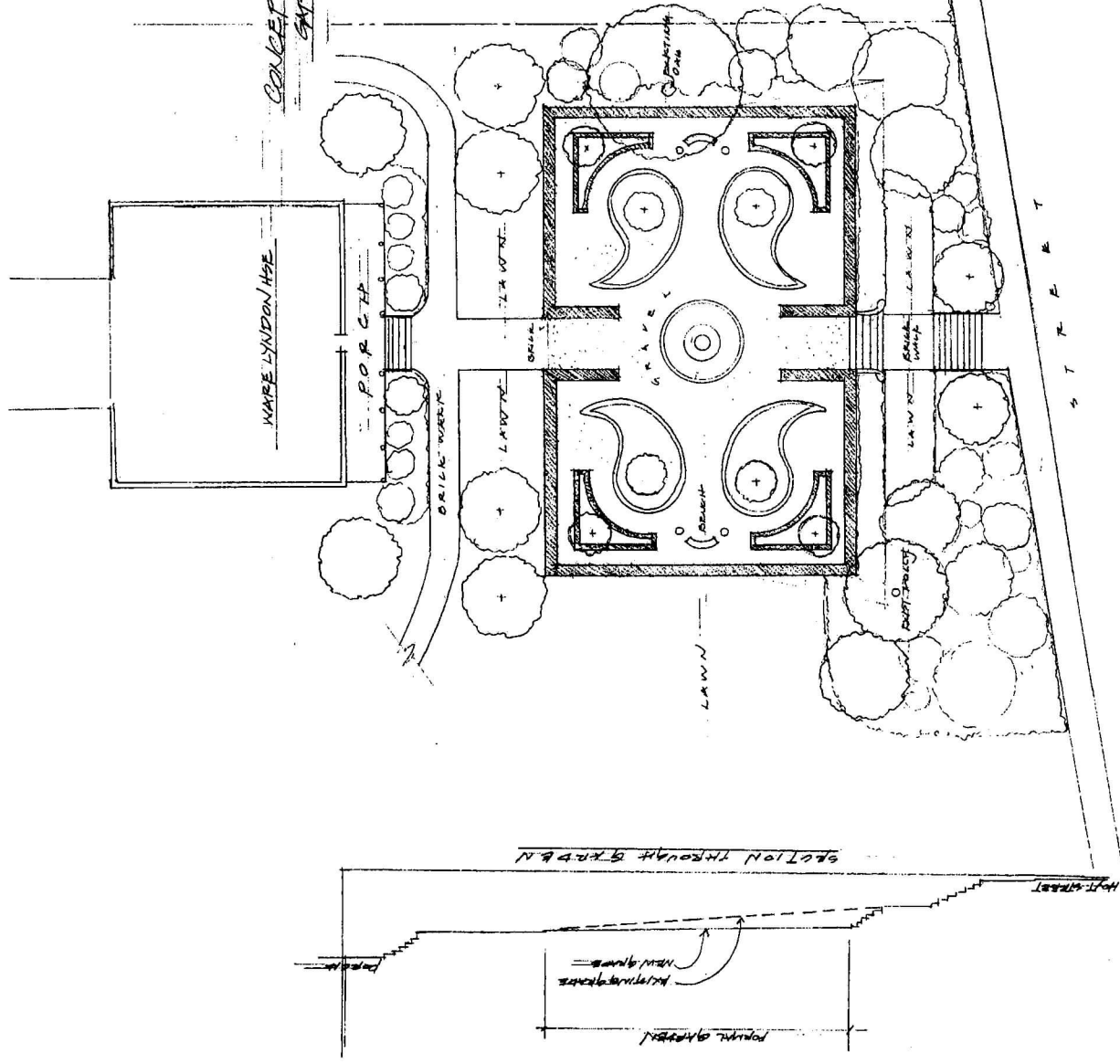
A GARDEN FOR THE WARE-LYNDON HOUSE

Athens, Georgia

**CONCEPT PLAN FOR A HISTORY-BASED
GARDEN FOR WARE LYNDON**

MAY 21, 2009 ROBINSON FISHER ASSOCIATES

- KEY ATTRIBUTES OF STEVEN'S THOMAS
GARDEN FOR REPERATION AT
WARE LYNDON HOUSE**
- ENTRANCE TO THE HOUSE FROM
THE STREET IS THROUGH THE GARAGE
 - AXIAL ORIENTATION TO HOUSE
 - SYMMETRICAL PATTERNS
 - FUSLEY PROVIDES HIGH PERSPECTIVE FIELD

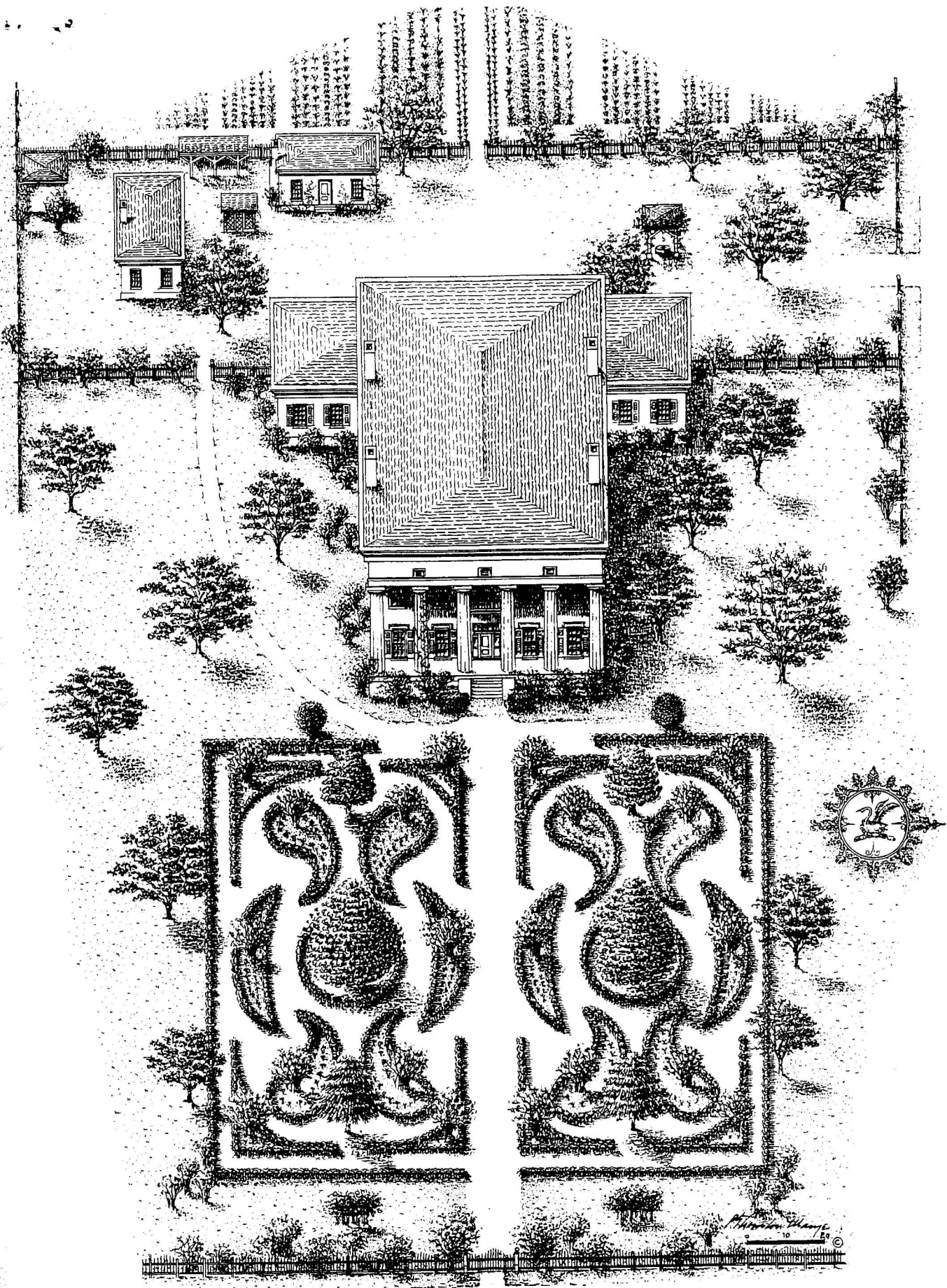


Budget for Implementation and Maintenance

The proposed garden is physically feasible to build at an estimated budget of \$215,000. Annual maintenance is estimated to cost \$12,000 per year.

BUDGET ESTIMATE

Item	Unit	Quantity	Unit Cost	Total
CONSTRUCTION COST				
Demolition	Day	2	1,200	2,400
Grading and Drainage	LS	1	12,000	12,000
Cistern System	LS	1	15,000	15,000
Brick Pavement	SF	350	18	6,300
Brick Steps	SF	160	40	6,400
Gravel Paving	Ton	30	40	1,200
Electrical and Lighting	LS	1	7,500	7,500
Garden Furnishings	LS	1	30,000	30,000
Ornamental Fountain and Pool	LS	1	25,000	25,000
Interpretive Signs	LS	1	25,000	25,000
Irrigation	LS	1	3,000	3,000
Planting:				
Trees	Each	25	250	6,250
Shrubs	Each	70	25	1,750
Hedge Shrubs	Each	680	20	13,600
Groundcovers	SF	3000	2	6,000
Sod	SF	5000	1	3,750
Flower Bed Planting	SF	1500	3	4,500
Bed Preparation	SF	1500	2	2,250
Mulch	SF	7500	0	2,250
Subtotal				174,150
Design Fees				20,898
Contingency, Administration, Permits				20,000
TOTAL				215,048
ANNUAL MAINTENANCE COST				
Labor	Gardener/Yr	0.2	40,000	8,000
Materials	LS/Yr	1	4,000	4,000
Utilities	LS/Mos	12	30	360
TOTAL				12,360
* This budget estimate is based on a concept, not design drawings. As such it should only be used for general guidance in planning.				
Prepared July 2009				



Alfred W. Chase
10
©

Stevens Thomas Place

Athens

IN 1848 Colonel Stevens Thomas, a gentleman of Welsh descent, and son of the Stevens Thomas who in its earliest days came to Athens from near-by Lexington, bought a piece of ground on Hancock Street and began construction of a handsome residence.

John Bishop, an English landscape gardener in charge of the University's Botanical Garden, was entrusted with the laying out of the grounds. This was done with intelligence and good taste. Oaks shaded a lawn that framed a box garden resembling two oriental rugs in a palm and crescent design, accented by *Magnolia grandiflora*, Japanese

magnolias and cape jasmine. Between it and the front fence were rose trellises and flowering shrubs. The house was surrounded by a luxuriance of vines, shrubs and flowers, and the service yard masked by high plantings. Carriage house and stables, fruit trees and a vegetable garden with flower bordered beds occupied the rear of the lot.

This property was bought by the Y. M. C. A. many years ago, the house moved, and their club building erected on the site of the garden. Happily a drawing of that charming spot was obtainable, also what is possibly the most complete list of mid-century North Georgia planting.

SHRUBS

Cherry Laurel
 Spirea, Double and Single
 Bridal Wreath
 Forsythia
 Kerria, Yellow Balls
 Scotch Broom
 Pyrus Japonica
 Burning Bush, Red
 Sweet Syringa
 Deutzia
 Lilacs, Persian and European
 Crape Myrtle
 Japanese Magnolia
 Chaste Plant
 Pittosporum
 Tea Olive
 Holly
 Euonymus
 Tea Plants
 Mimosa
 Tree Box

Pink Spirea
 Snow Balls
 Pomegranate
 Night Blooming Cereus

FLOWERS

Hollyhocks
 Double Hollyhocks,
 Sulphur Colored
 Wallflowers
 Candytuft
 Sweet Allyssum
 Sweet Williams
 Portulacca
 House Leek
 Lantana
 China Aster
 Geraniums, Lemon Stag, etc.
 Primrose
 Spice Pinks
 Lemon Verbena

ROSES

Louis Phillippe
 Paul Neyron
 Madame Pactole
 Musk Cluster
 Malmaison
 Damask Rose, very sweet
 Moss
 Wild Rose
 Devoniensis
 Harrison Rose, Yellow
 Lady Banksia
 Marechal Niel
 Woodland Climber
 Margaret Rose

BULBS AND TUBERS

Flags, White and Purple
 Narcissus
 Jonquils
 Snowdrops
 Star of Bethlehem

Blue Bottles

Hyacinths, Blue and White
 Lilies of the Valley
 Tube Roses
 Crocus
 Jacob's Ladders (Gladioli)

VINES

Honeysuckle
 Star Jasmine
 Eglantine
 Ivy
 Rhynchospermum
 Madeira Vine
 Wandering Jew
 Wistaria
 Grand Duke Jasmine

FRUITS

Figs, Blue Celeste
 Pears, Bartlett and Seckle
 Strawberries



1848-1863

On the opposite page is shown the home of Colonel Stevens Thomas. The box garden has an unusual oriental pattern.

Revised

BUDGET ESTIMATE

Item	Unit	Quantity	Unit Cost	Total
CONSTRUCTION COST				
Demolition	LS	1	5,000	5,000
Grading and Drainage	LS	1	12,000	12,000
Cistern System	LS	1	30,000	30,000
Brick Pavement and Borders	SF	1000	18	18,000
Brick Steps	SF	160	40	6,400
Stabilized Gravel Paving	LS	1	5,000	5,000
Electrical and Lighting	LS	1	7,500	7,500
Garden Furnishings	LS	1	10,000	10,000
Ornamental Fountain and Plumbing	LS	1	25,000	25,000
Interpretive Signs	LS	1	10,000	10,000
Irrigation	LS	1	5,000	5,000
Planting:				
Trees	Each	25	250	6,250
Shrubs	Each	70	25	1,750
Hedge Shrubs	Each	680	20	13,600
Groundcovers	SF	3000	2	6,000
Sod	SF	5000	1	3,750
Flower Bed Planting	SF	1500	3	4,500
Bed Preparation	SF	1500	2	2,250
Mulch	SF	7500	0	2,250
Subtotal				174,250
Design Fees				20,910
Contingency, Administration, Permits				20,000
TOTAL				215,160
ANNUAL MAINTENANCE COST				
Labor	Gardener/Yr	0.2	40,000	8,000
Materials	LS/Yr	1	4,000	4,000
Utilities	LS/Mos	12	30	360
TOTAL				12,360
* This budget estimate is based on a concept, not design drawings. As such it should only be used for general guidance in planning.				
Prepared July 2009				