

NORTH LAWN

- SCREENING PLANTS ON NORTHERN END OF LAWN WILL BLOCK VIEW OF BOTH THE PARKING LOT AND THE CONCRETE PLANT NORTH OF THE PATIO.
- PLANTING WILL BE OF MEDIUM HEIGHT TO INSURE THAT VIEWS TO THE MOUNTAINS ARE PROTECTED.

ENTRY COURT

- FOUR LARGE PLANTERS TO FRAME THE MAIN ENTRANCE OF THE ART CENTER.
- SIMPLE PLANTINGS TO SOFTEN EDGES AND SCREEN DRAINPIES.

KITCHEN GARDEN

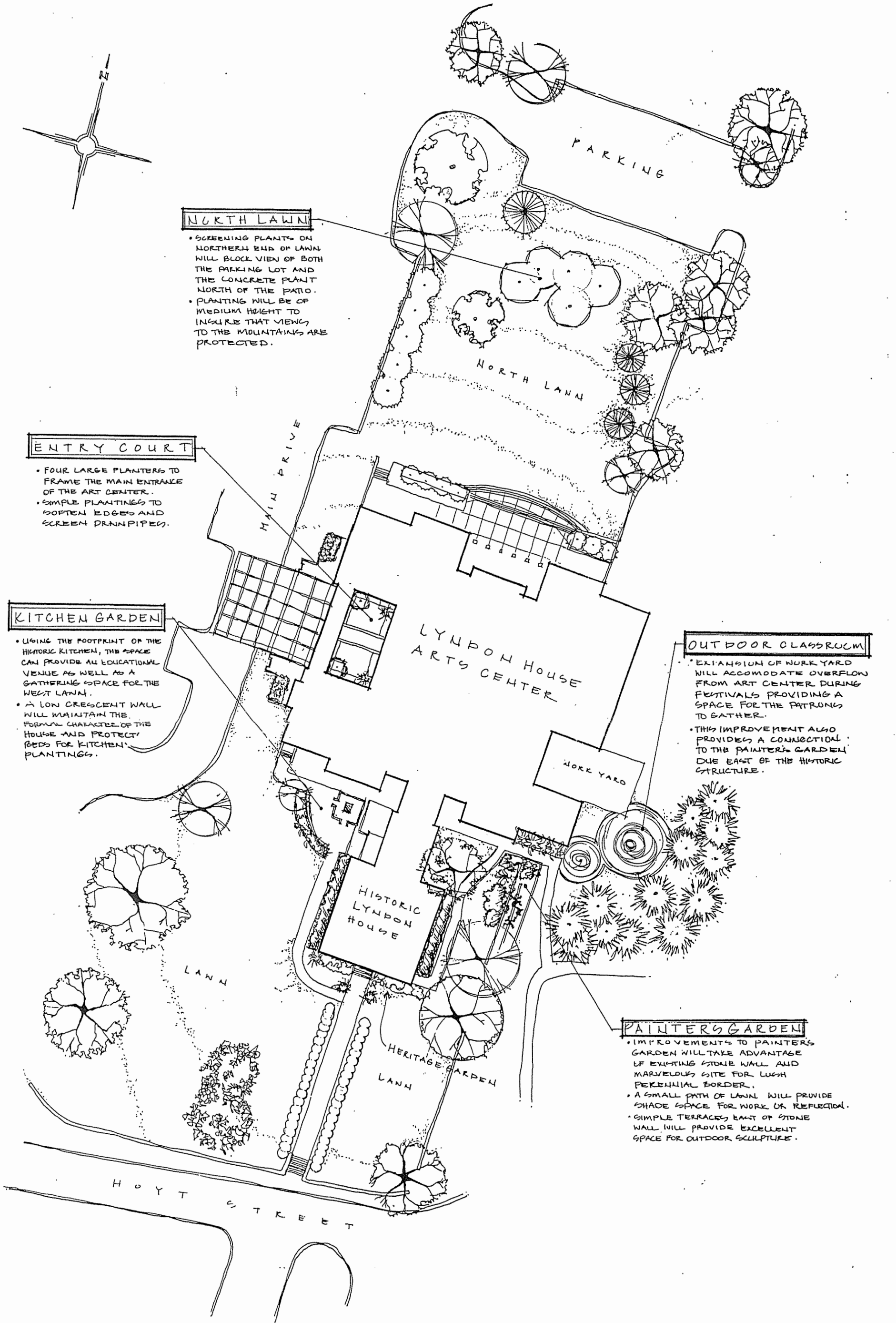
- USING THE FOOTPRINT OF THE HISTORIC KITCHEN, THIS SPACE CAN PROVIDE AN EDUCATIONAL VENUE AS WELL AS A GATHERING SPACE FOR THE WEST LAWN.
- A LOW CRESCENT WALL WILL MAINTAIN THE FORMAL CHARACTER OF THE HOUSE AND PROTECT BEDS FOR KITCHEN PLANTINGS.

OUTDOOR CLASSROOM

- EXTENSION OF WORK YARD WILL ACCOMMODATE OVERFLOW FROM ART CENTER DURING FESTIVALS PROVIDING A SPACE FOR THE PATRONS TO GATHER.
- THIS IMPROVEMENT ALSO PROVIDES A CONNECTION TO THE PAINTER'S GARDEN DUE EAST OF THE HISTORIC STRUCTURE.

PAINTER'S GARDEN

- IMPROVEMENTS TO PAINTER'S GARDEN WILL TAKE ADVANTAGE OF EXISTING STONE WALL AND MARVELOUS SITE FOR LUSH PERENNIAL BORDER.
- A SMALL PATH OF LAWN WILL PROVIDE SHADE SPACE FOR WORK OR REFLECTION.
- SIMPLE TERRACES EAST OF STONE WALL WILL PROVIDE EXCELLENT SPACE FOR OUTDOOR SCULPTURE.



Lyndon House Arts Center

Athens, Georgia

Schematic Plan

Scale: 1" = 20'-0"

Prepared by the Office of Preservation Services
School of Environmental Design University of Georgia Drawn by Town Harwell