

# Ware-Lyndon House Historic Garden

Athens-Clarke County, Georgia

Issued: DECEMBER 01, 2014

## Construction Plans - Pricing Set

### OWNER:

Athens-Clarke County  
SPLOST Program Management  
301 College Ave, Rm 101  
Athens, GA 30601

24-HOUR CONTACT:  
Keith Sanders, Project Administrator  
PH: (706) 613-3025

### LANDSCAPE ARCHITECT:



**Root Design Studio, LLC**

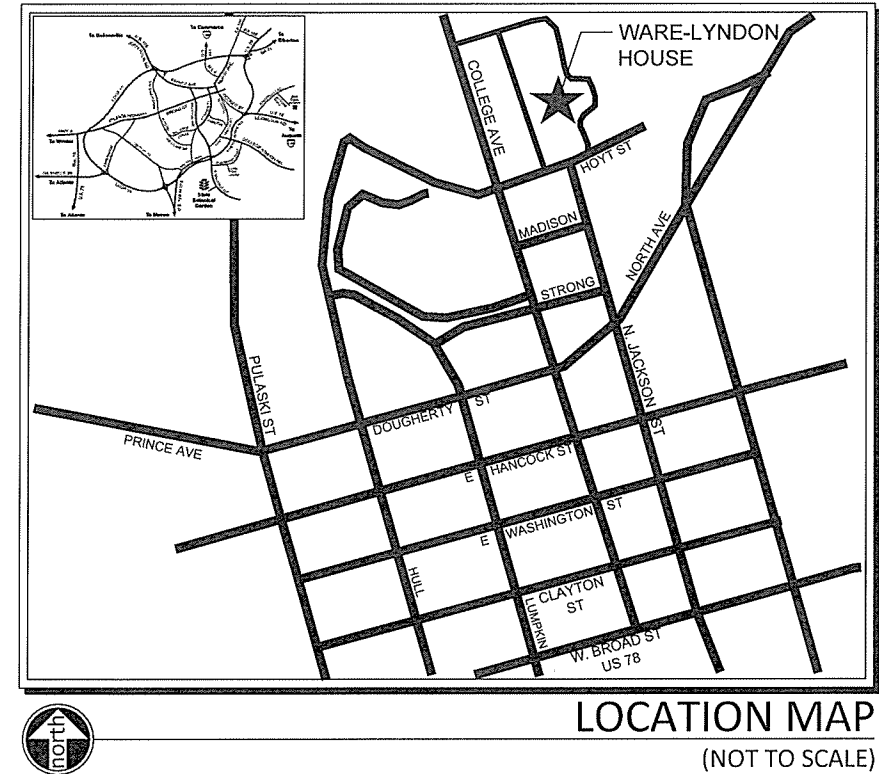
5099 Woodridge Way  
Tucker, GA 30084  
404-895-2253  
mkidd@RootDStudio.com

### In Partnership with:

ATHENS DESIGN STUDIO  
109 Westover Drive  
Athens, GA 30606

and

Mack R. Cain, RLA, LEED AP  
3472 Desoto Ridge Trail  
Buford, GA 30519



### PROJECT NOTES:

1. Project is located in the City of Athens, Clarke County, Georgia.
2. All work shall be performed in accordance with applicable Federal, State and Local laws, codes, and regulations, as well as the most current version of the ADA Standards for Accessible Design.
3. The Contractor shall secure all necessary permits prior to beginning work.
4. The Contractor shall contact the Utility Protection Service (811) to locate all above and below ground utilities prior to beginning work.

### SHEET INDEX:

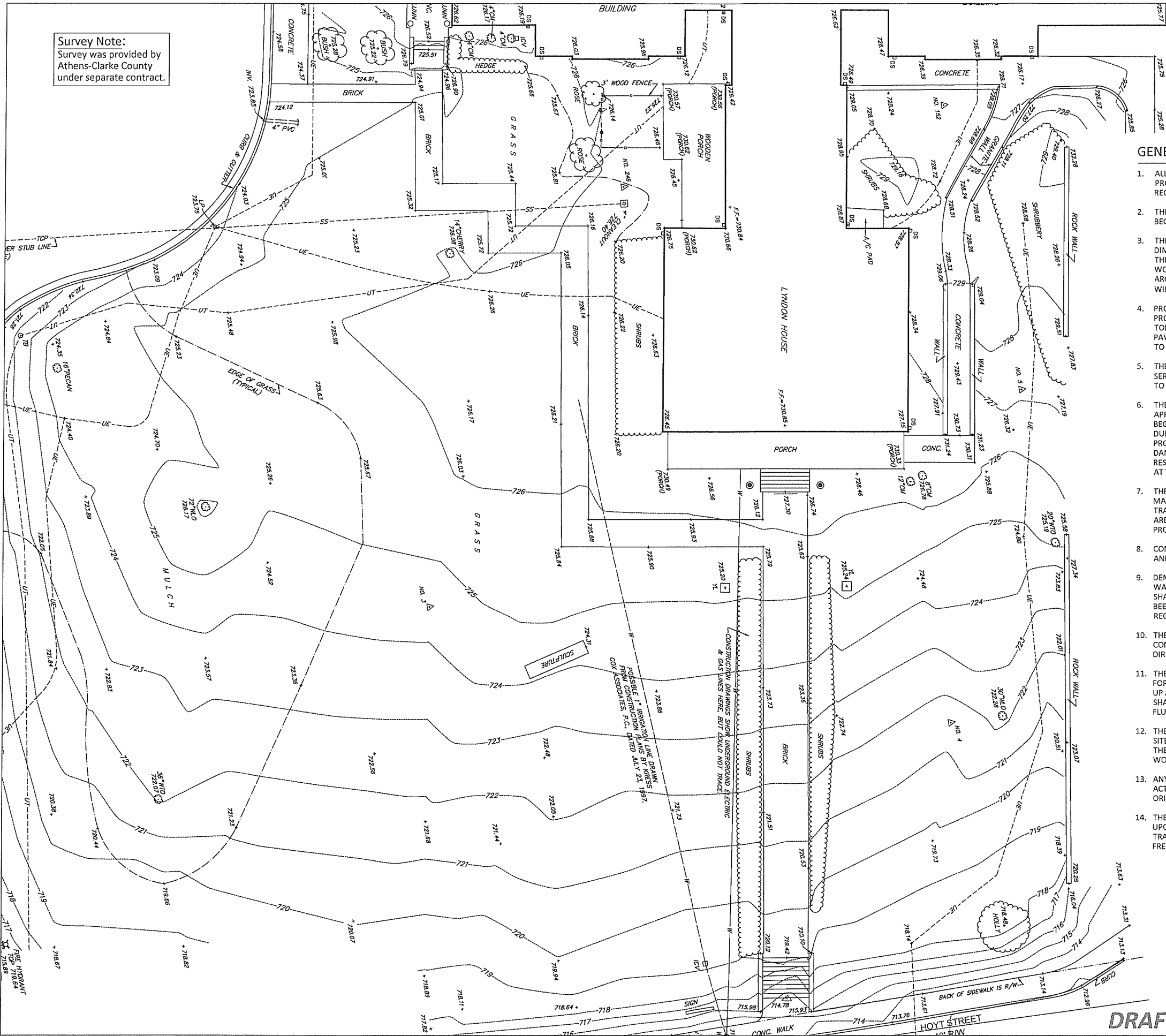
	COVER
L-01	SURVEY / EXISTING CONDITIONS & GENERAL NOTES
L-02	TREE PROTECTION & EROSION CONTROL PLAN
L-03	DEMOLITION PLAN
L-04	GRADING & DRAINAGE PLAN
L-05	LAYOUT PLAN
L-06	CONSTRUCTION DETAILS
L-07	CONSTRUCTION DETAILS
L-08	CONSTRUCTION DETAILS
I-01	IRRIGATION PLANS
I-02	IRRIGATION PLANS
I-03	IRRIGATION PLANS
I-04	IRRIGATION PLANS
I-05	IRRIGATION PLANS

### REVISIONS:

No.	Date	Description

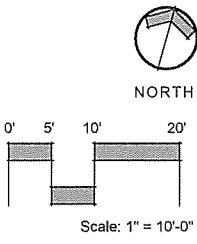


**Survey Note:**  
Survey was provided by Athens-Clarke County under separate contract.



**GENERAL PROJECT NOTES:**

1. ALL MATERIALS AND METHODS OF CONSTRUCTION SHALL COMPLY WITH PROJECT SPECIFICATIONS AND APPLICABLE FEDERAL, STATE AND LOCAL REQUIREMENTS AND STANDARDS.
2. THE CONTRACTOR SHALL SECURE ALL NECESSARY PERMITS PRIOR TO BEGINNING ANY WORK.
3. THE CONTRACTOR SHALL CHECK AND VERIFY PROPOSED GRADES, DIMENSIONS, AND EXISTING CONDITIONS. REPORT ANY DISCREPANCIES TO THE LANDSCAPE ARCHITECT FOR DIRECTION BEFORE PROCEEDING WITH WORK. WORK STARTED WITHOUT DIRECTION FROM THE LANDSCAPE ARCHITECT WILL BE THE SOLE RESPONSIBILITY OF THE CONTRACTOR AND WILL BE CORRECTED IF NECESSARY AT HIS/HER EXPENSE.
4. PROPOSED CONTOURS AND SPOT ELEVATIONS REPRESENT FINAL GRADE. PROPOSED GRADE ELEVATIONS SHOWN WITHIN PAVED AREAS REPRESENT TOP OF PAVEMENT ELEVATIONS. CONTRACTOR SHALL ALLOW FOR PAVEMENT THICKNESS, TOPSOIL, BASE COURSE, SLABS, ETC. WHEN GRADING TO SUBGRADE ELEVATIONS.
5. THE CONTRACTOR SHALL CONTACT THE ONE CALL UTILITY LOCATION SERVICE (811) TO LOCATE ALL ABOVE AND BELOW GROUND UTILITIES PRIOR TO BEGINNING WORK.
6. THE LOCATIONS OF EXISTING UTILITIES SHOWN ON THE PLANS ARE APPROXIMATE AND SHALL BE VERIFIED BY THE CONTRACTOR PRIOR TO BEGINNING CONSTRUCTION. IF UNCHARTED UTILITIES ARE ENCOUNTERED DURING EXCAVATION OPERATIONS, THE CONTRACTOR SHALL NOTIFY THE PROJECT LANDSCAPE ARCHITECT IMMEDIATELY FOR INSTRUCTIONS. ANY DAMAGE OR INTERRUPTION OF EXISTING UTILITIES SHALL BE THE SOLE RESPONSIBILITY OF THE CONTRACTOR AND SHALL BE REPAIRED PROMPTLY AT THE CONTRACTOR'S EXPENSE.
7. THROUGHOUT CONSTRUCTION, THE CONTRACTOR SHALL PROVIDE AND MAINTAIN SUFFICIENT BARRICADES, LIGHTS, WARNING SIGNS AND OTHER TRAFFIC CONTROL METHODS ADJACENT TO EXISTING ROADWAYS, PARKING AREAS AND PEDESTRIAN THOROUGHFARES AS MAY BE NECESSARY FOR THE PROTECTION AND SAFETY OF THE PUBLIC.
8. CONSTRUCTION ACCESS POINTS AND STAGING AREAS ARE APPROXIMATE AND MUST BE FIELD VERIFIED BEFORE USE BY CONTRACTOR.
9. DEMOLITION DEBRIS SHALL BECOME PROPERTY OF THE CONTRACTOR. WASTE SOILS, WASTE VEGETATION AND OTHER DELETERIOUS MATERIALS SHALL BE HAULED OFF-SITE AND BE DISPOSED OF AT A LOCATION THAT HAS BEEN APPROVED IN ACCORDANCE WITH LOCAL, STATE AND FEDERAL REGULATIONS. BURNING WILL NOT BE ALLOWED ON THIS PROJECT.
10. THE CONTRACTOR SHALL BE RESPONSIBLE FOR THE LAYOUT OF ALL CONSTRUCTION ELEMENTS, WITH FIELD ADJUSTMENTS AS NECESSARY AS DIRECTED BY THE PROJECT LANDSCAPE ARCHITECT.
11. THE CONTRACTOR SHALL MAINTAIN A CLEAN AND COURTEOUS WORK SITE FOR THE DURATION OF THE PROJECT. TRASH AND DEBRIS SHALL BE PICKED UP AND PROPERLY DISPOSED OF EACH DAY. VEHICLES AND EQUIPMENT SHALL BE CLEANED AND MAINTAINED REGULARLY SO AS NOT TO DRIP ANY FLUIDS OR TRACK AND SEDIMENT WITHIN THE PROPERTY.
12. THE CONTRACTOR SHALL ENSURE THAT NO SEDIMENT LEAVES THE WORK SITE DURING CONSTRUCTION. ANY SEDIMENT THAT ACCUMULATES ALONG THE CURB OR ON THE ROADWAY SHALL BE SWEEPED UP AT THE END OF EACH WORK DAY AND PRIOR TO EACH RAIN EVENT.
13. ANY PROPERTY THAT IS DAMAGED AS A RESULT OF CONSTRUCTION ACTIVITIES FROM THIS PROJECT SHALL BE REPLACED OR REPAIRED TO ITS ORIGINAL CONDITION AT THE CONTRACTOR'S EXPENSE.
14. THE CONTRACTOR SHALL LEAVE THE PROJECT SITE IN A PRISTINE CONDITION UPON COMPLETION OF THE WORK. REMOVE AND PROPERLY DISPOSE OF ALL TRASH, DEBRIS, EXCESS SOIL, ETC. CLEAN ALL VISIBLE SURFACES SO THEY ARE FREE FROM DIRT, SMUDGES, STAINS, ETC.



**DRAFT NOT FOR CONSTRUCTION**



Seal: \_\_\_\_\_  
Date: 12.01.2014  
Project No: 2014-011  
Drawn By: MF  
Checked By: MK

**Ware-Lyndon House Front Landscape**  
Athens, Georgia  
Athens-Clarke County Unified Government  
293 Hoyt Street  
Athens, GA 30606  
phone: 706-613-3623

Revisions:

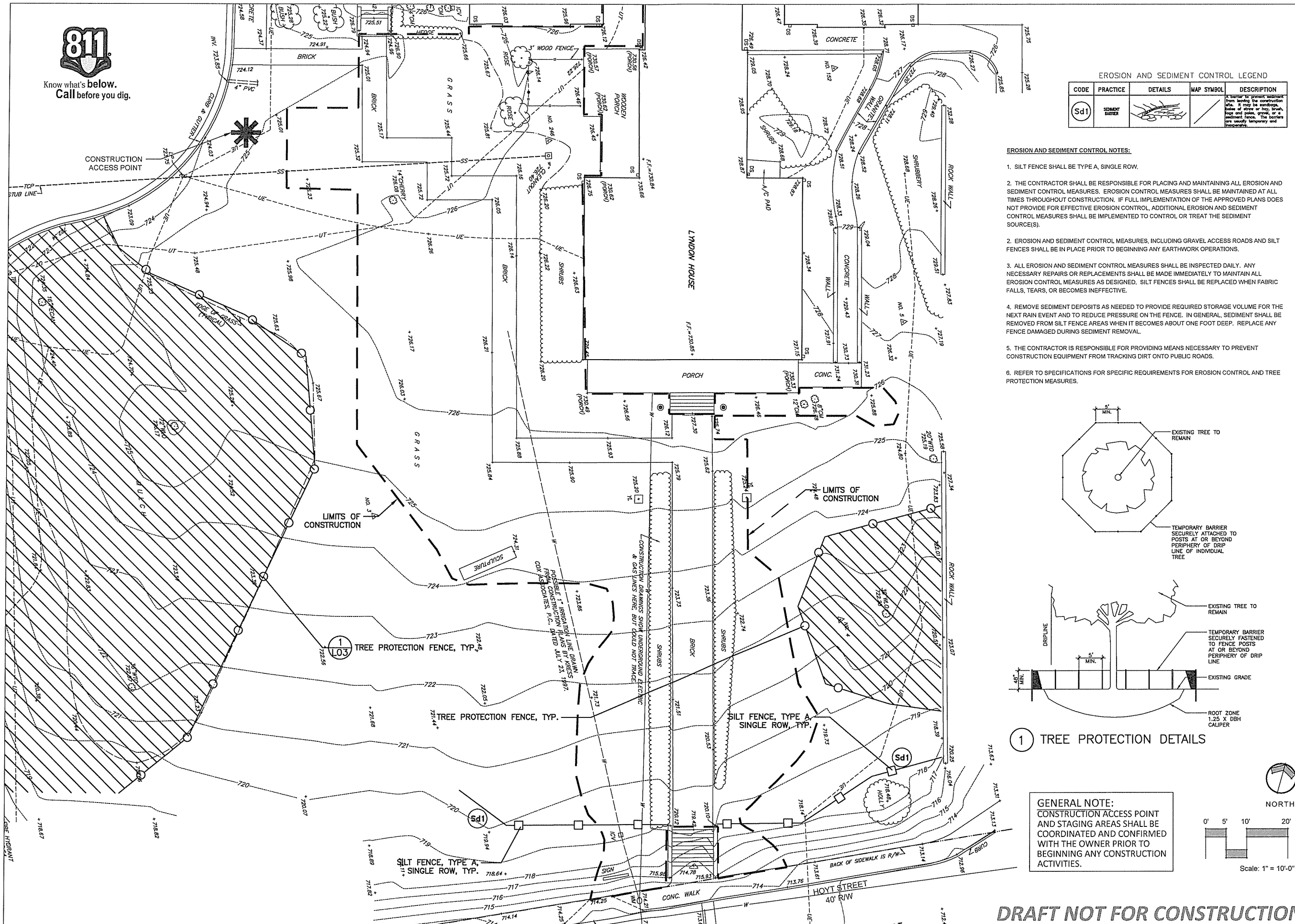
NO.	DATE	DESCRIPTION

Sheet Title:  
**Survey/  
Ex. Conditions  
& General Notes**

Sheet No:  
**L-01**



Know what's below.  
Call before you dig.

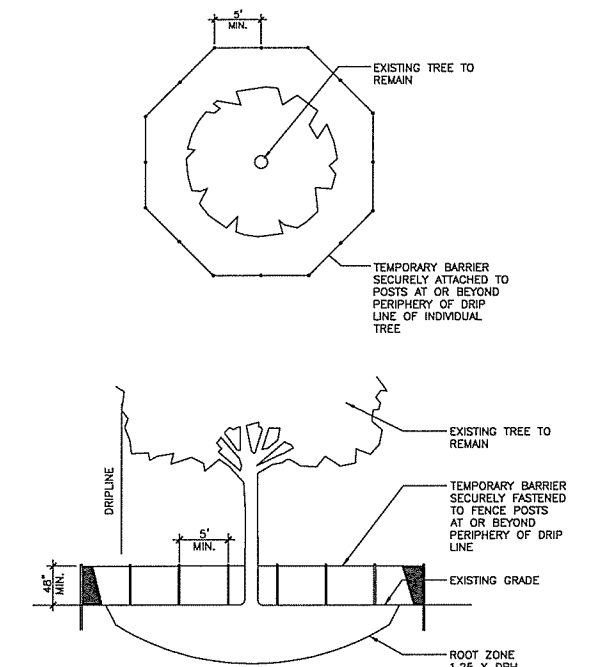


EROSION AND SEDIMENT CONTROL LEGEND

CODE	PRACTICE	DETAILS	MAP SYMBOL	DESCRIPTION
Sd1	SEDIMENT BARRIER			A barrier to prevent sediment from leaving the construction site. It may be made of fabric, straw or hay, straw, logs and poles, gravel, or a sediment fence. The barrier is usually temporary and temporary.

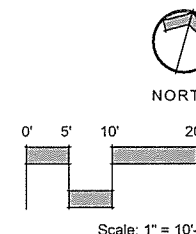
EROSION AND SEDIMENT CONTROL NOTES:

1. SILT FENCE SHALL BE TYPE A, SINGLE ROW.
2. THE CONTRACTOR SHALL BE RESPONSIBLE FOR PLACING AND MAINTAINING ALL EROSION AND SEDIMENT CONTROL MEASURES. EROSION CONTROL MEASURES SHALL BE MAINTAINED AT ALL TIMES THROUGHOUT CONSTRUCTION. IF FULL IMPLEMENTATION OF THE APPROVED PLANS DOES NOT PROVIDE FOR EFFECTIVE EROSION CONTROL, ADDITIONAL EROSION AND SEDIMENT CONTROL MEASURES SHALL BE IMPLEMENTED TO CONTROL OR TREAT THE SEDIMENT SOURCE(S).
2. EROSION AND SEDIMENT CONTROL MEASURES, INCLUDING GRAVEL ACCESS ROADS AND SILT FENCES SHALL BE IN PLACE PRIOR TO BEGINNING ANY EARTHWORK OPERATIONS.
3. ALL EROSION AND SEDIMENT CONTROL MEASURES SHALL BE INSPECTED DAILY. ANY NECESSARY REPAIRS OR REPLACEMENTS SHALL BE MADE IMMEDIATELY TO MAINTAIN ALL EROSION CONTROL MEASURES AS DESIGNED. SILT FENCES SHALL BE REPLACED WHEN FABRIC FALLS, TEARS, OR BECOMES INEFFECTIVE.
4. REMOVE SEDIMENT DEPOSITS AS NEEDED TO PROVIDE REQUIRED STORAGE VOLUME FOR THE NEXT RAIN EVENT AND TO REDUCE PRESSURE ON THE FENCE. IN GENERAL, SEDIMENT SHALL BE REMOVED FROM SILT FENCE AREAS WHEN IT BECOMES ABOUT ONE FOOT DEEP. REPLACE ANY FENCE DAMAGED DURING SEDIMENT REMOVAL.
5. THE CONTRACTOR IS RESPONSIBLE FOR PROVIDING MEANS NECESSARY TO PREVENT CONSTRUCTION EQUIPMENT FROM TRACKING DIRT ONTO PUBLIC ROADS.
6. REFER TO SPECIFICATIONS FOR SPECIFIC REQUIREMENTS FOR EROSION CONTROL AND TREE PROTECTION MEASURES.



1 TREE PROTECTION DETAILS

GENERAL NOTE:  
CONSTRUCTION ACCESS POINT AND STAGING AREAS SHALL BE COORDINATED AND CONFIRMED WITH THE OWNER PRIOR TO BEGINNING ANY CONSTRUCTION ACTIVITIES.



DRAFT NOT FOR CONSTRUCTION



Seal:

Date: 12.01.2014  
 Project No: 2014-011  
 Drawn By: MF  
 Checked By: MK

Ware-Lyndon House Front Landscape  
 Athens, Georgia  
 Athens-Clarke County Unified Government  
 293 Hoyt Street  
 Athens, GA 30606

phone: 706-613-3623  
 fax: XXX-XXX-XXXX

Revisions:

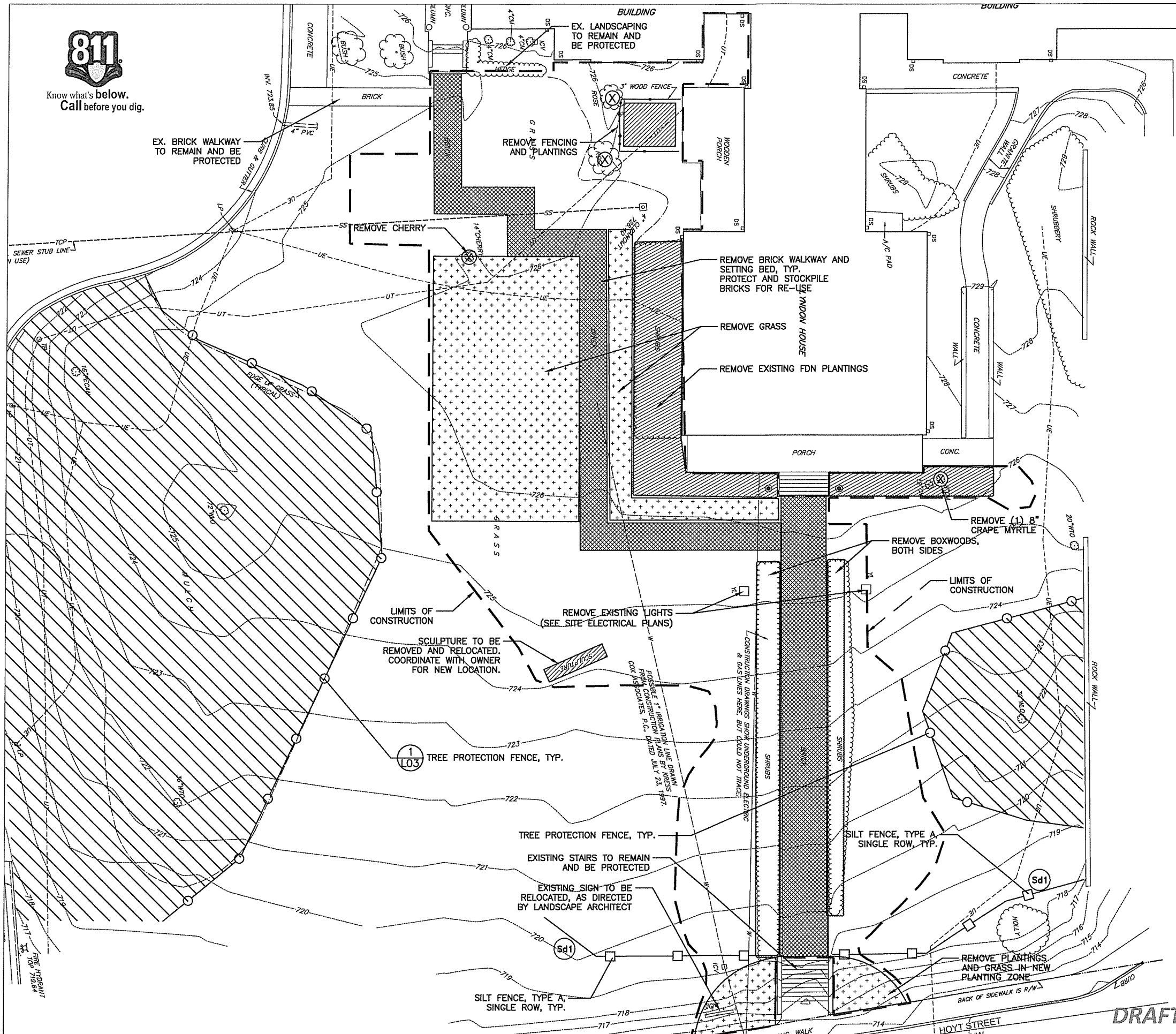
NO.	DATE	DESCRIPTION

Sheet Title:  
Tree Protection Erosion Control

Sheet No:  
L-02



Know what's below.  
Call before you dig.



DEMOLITION NOTE:  
AS PART OF GENERAL DEMOLITION WORK,  
CONTRACTOR SHALL REMOVE ALL SITE  
DEBRIS AND ANY OBJECTS THAT INTERFERE  
WITH CONSTRUCTION ACTIVITIES.

DEMOLITION LEGEND:

- REMOVE TREE/SHRUB
- REMOVE PLANTINGS
- REMOVE BRICKS



Root  
design studio  
landscape  
architecture  
404-895-2253

Seal:

Date: 12.01.2014  
Project No: 2014-011  
Drawn By: MF  
Checked By: MK

Ware-Lyndon House Front Landscape  
Athens, Georgia  
Athens-Clarke County Unified Government  
293 Hoyt Street  
Athens, GA 30606

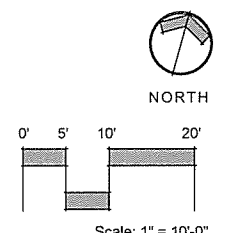
phone: 706-613-3623  
fax: XXX-XXX-XXXX

Revisions:

NO.	DATE	DESCRIPTION

Sheet Title:  
Demolition Plan

Sheet No:  
L-03



**DRAFT NOT FOR CONSTRUCTION**



Know what's below.  
Call before you dig.



Root  
design studio  
landscape  
architecture  
404-895-2253

Seal:

Date: 12.01.2014  
Project No: 2014-011  
Drawn By: MF  
Checked By: MK

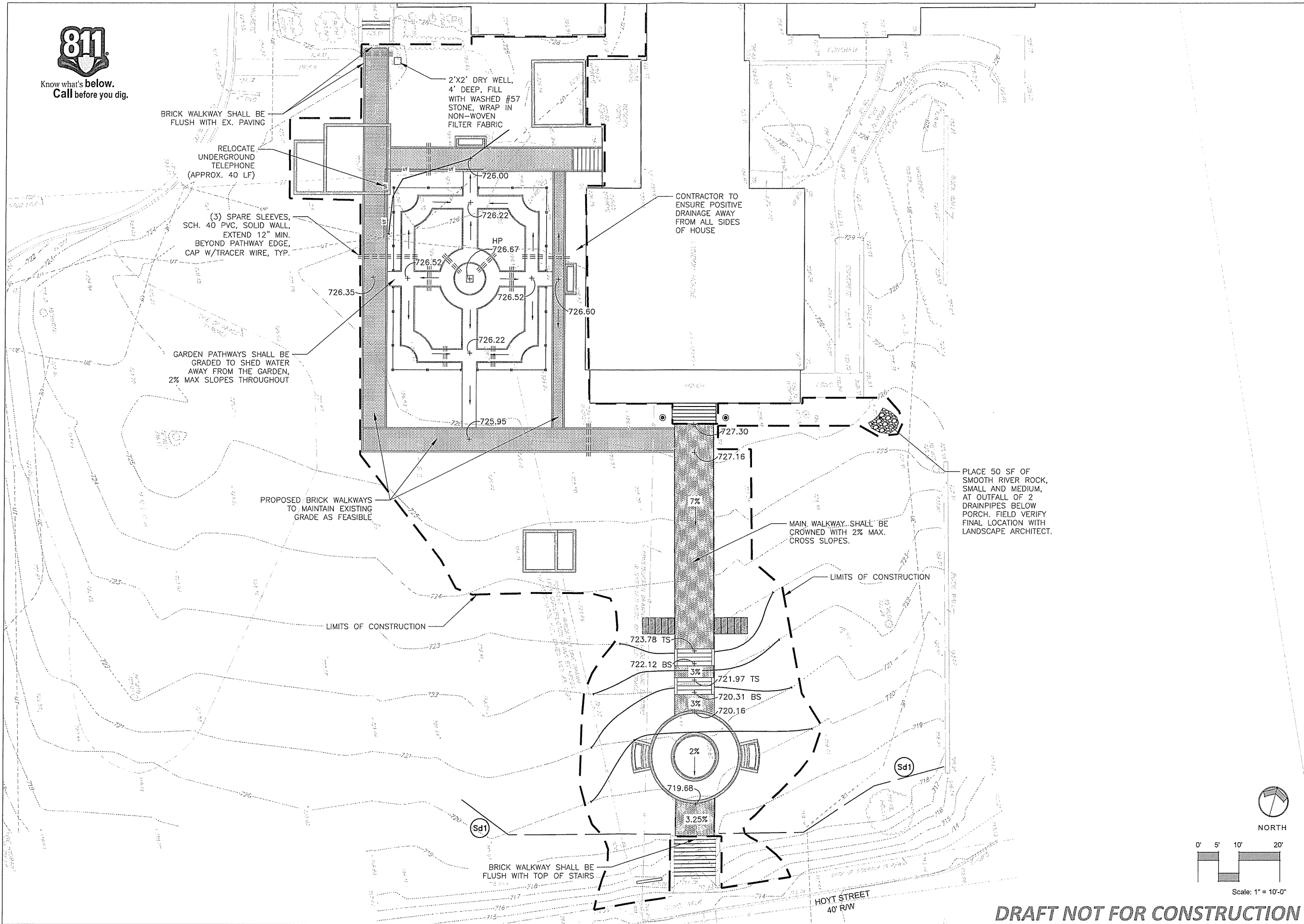
Ware-Lyndon House Front Landscape  
Athens, Georgia  
Athens-Clarke County Unified Government  
293 Hoyt Street  
Athens, GA 30606  
phone: 706-613-9623  
fax: XXX-XXX-XXXX

Revisions:

NO.	DATE	DESCRIPTION

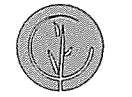
Sheet Title:  
Grading & Drainage Plan

Sheet No:  
L-04





Know what's below.  
Call before you dig.



Root  
design studio  
landscape  
architecture  
404-895-2253

Seal:

Date: 12.01.2014  
Project No: 2014-011  
Drawn By: MF  
Checked By: MK

# Ware-Lyndon House Front Landscape

Athens, Georgia

Athens-Clarke County Unified Government

293 Hoyt Street

Athens, GA 30606

phone: 706-613-3623

fax: XXX-XXX-XXXX

Revisions:

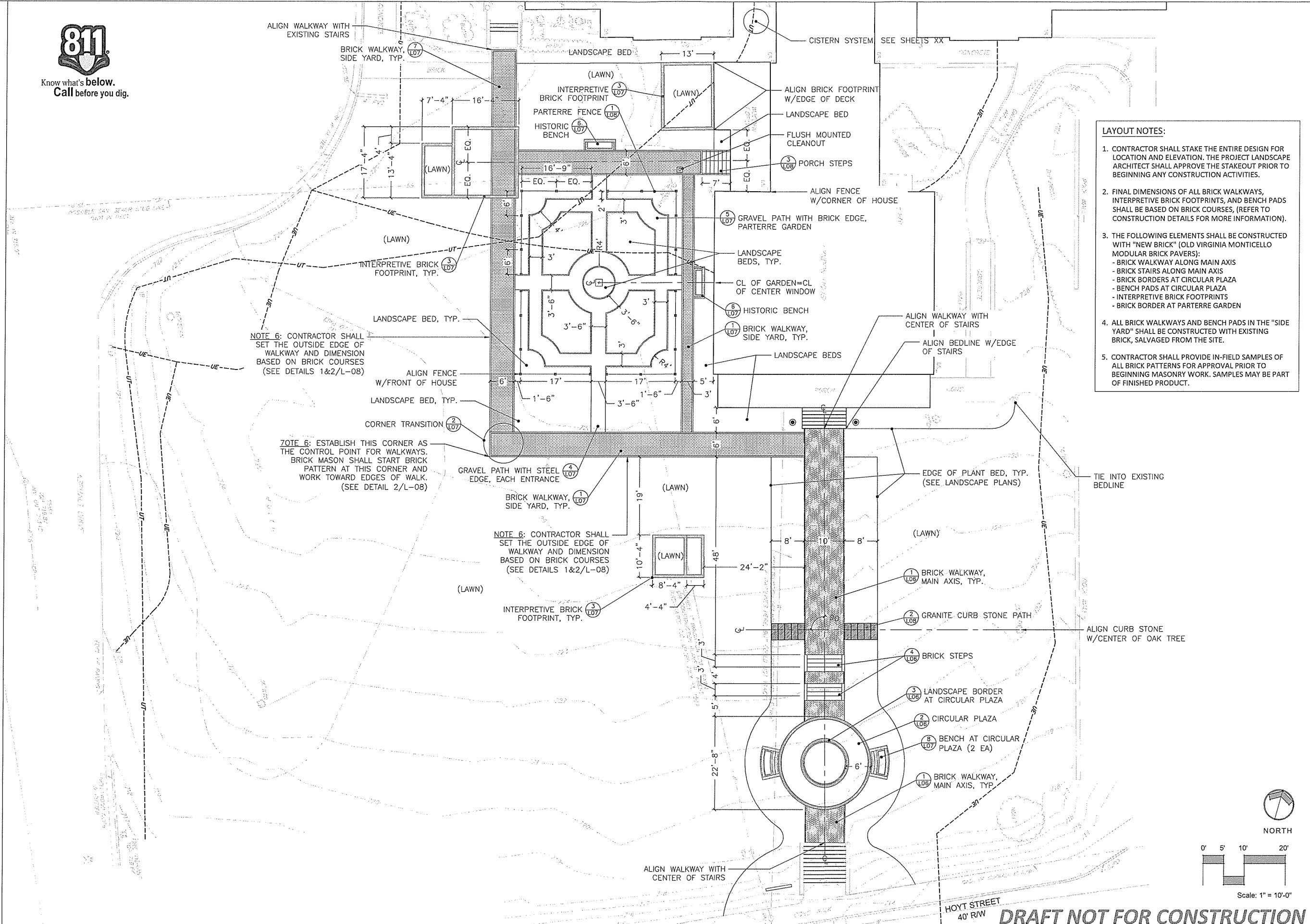
NO.	DATE	DESCRIPTION

Sheet Title:

Layout Plan

Sheet No:

L-05

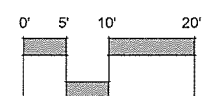


- LAYOUT NOTES:**
1. CONTRACTOR SHALL STAKE THE ENTIRE DESIGN FOR LOCATION AND ELEVATION. THE PROJECT LANDSCAPE ARCHITECT SHALL APPROVE THE STAKEOUT PRIOR TO BEGINNING ANY CONSTRUCTION ACTIVITIES.
  2. FINAL DIMENSIONS OF ALL BRICK WALKWAYS, INTERPRETIVE BRICK FOOTPRINTS, AND BENCH PADS SHALL BE BASED ON BRICK COURSES, (REFER TO CONSTRUCTION DETAILS FOR MORE INFORMATION).
  3. THE FOLLOWING ELEMENTS SHALL BE CONSTRUCTED WITH "NEW BRICK" (OLD VIRGINIA MONTICELLO MODULAR BRICK PAVERS):
    - BRICK WALKWAY ALONG MAIN AXIS
    - BRICK STAIRS ALONG MAIN AXIS
    - BRICK BORDERS AT CIRCULAR PLAZA
    - BENCH PADS AT CIRCULAR PLAZA
    - INTERPRETIVE BRICK FOOTPRINTS
    - BRICK BORDER AT PARTERRE GARDEN
  4. ALL BRICK WALKWAYS AND BENCH PADS IN THE "SIDE YARD" SHALL BE CONSTRUCTED WITH EXISTING BRICK, SALVAGED FROM THE SITE.
  5. CONTRACTOR SHALL PROVIDE IN-FIELD SAMPLES OF ALL BRICK PATTERNS FOR APPROVAL PRIOR TO BEGINNING MASONRY WORK. SAMPLES MAY BE PART OF FINISHED PRODUCT.

NOTE 6: CONTRACTOR SHALL SET THE OUTSIDE EDGE OF WALKWAY AND DIMENSION BASED ON BRICK COURSES (SEE DETAILS 1&2/L-08)

NOTE 6: ESTABLISH THIS CORNER AS THE CONTROL POINT FOR WALKWAYS. BRICK MASON SHALL START BRICK PATTERN AT THIS CORNER AND WORK TOWARD EDGES OF WALK. (SEE DETAIL 2/L-08)

NOTE 6: CONTRACTOR SHALL SET THE OUTSIDE EDGE OF WALKWAY AND DIMENSION BASED ON BRICK COURSES (SEE DETAILS 1&2/L-08)



HOYT STREET  
40' R/W **DRAFT NOT FOR CONSTRUCTION**



**Root**  
design studio  
landscape  
architecture  
404-895-2253

Seal:

Date: 12.01.2014

Project No: 2014-011

Drawn By: MF

Checked By: MK

**Ware-Lyndon House Front Landscape**  
Athens, Georgia

Athens-Clarke County Unified Government  
293 Hoyt Street  
Athens, GA 30606

fax: XXX-XXX-XXXX

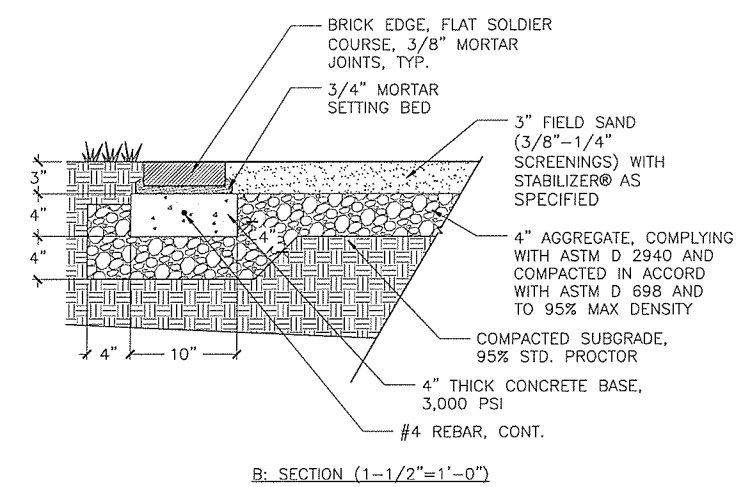
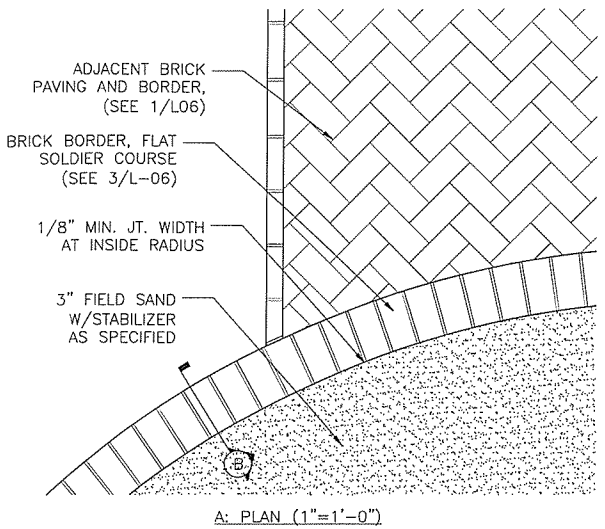
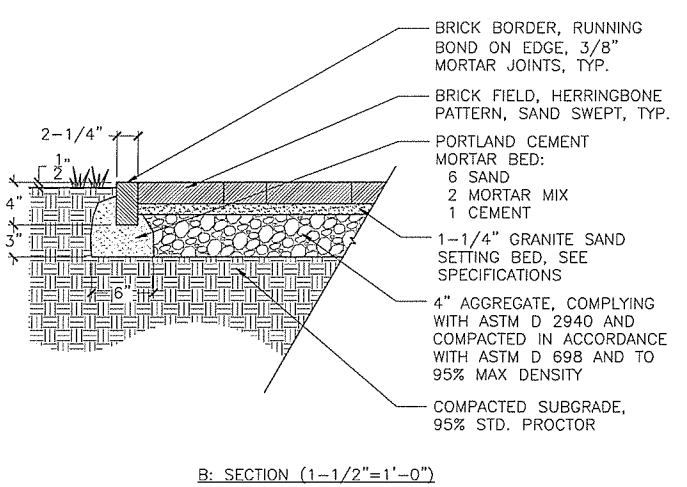
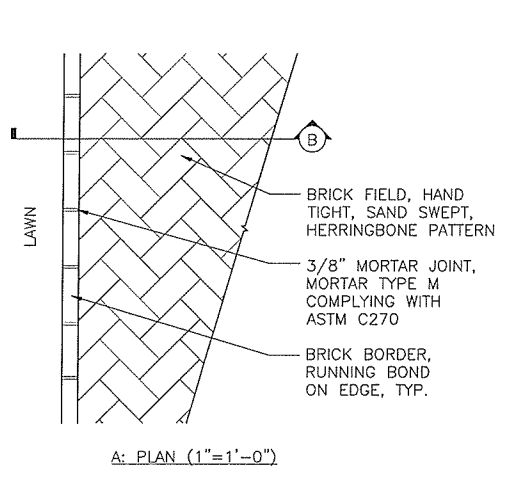
phone: 706-633-3623

Revisions:

NO.	DATE	DESCRIPTION

Sheet Title:  
**Construction Details**

Sheet No:  
**L-06**

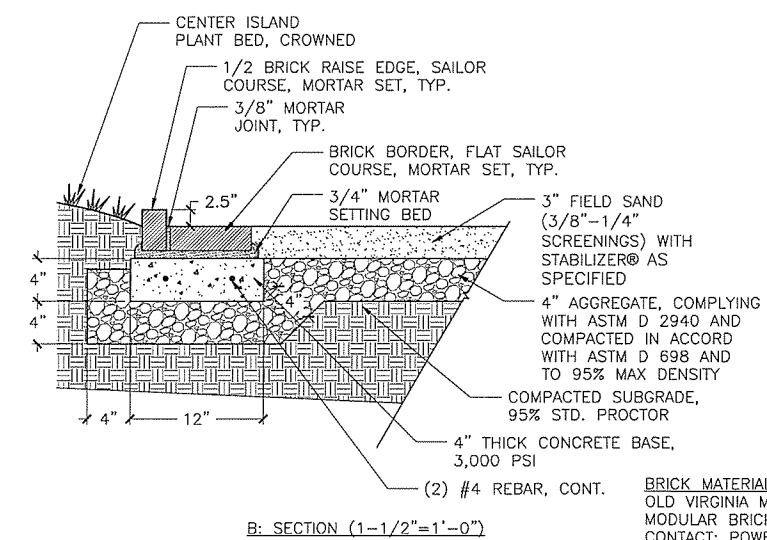
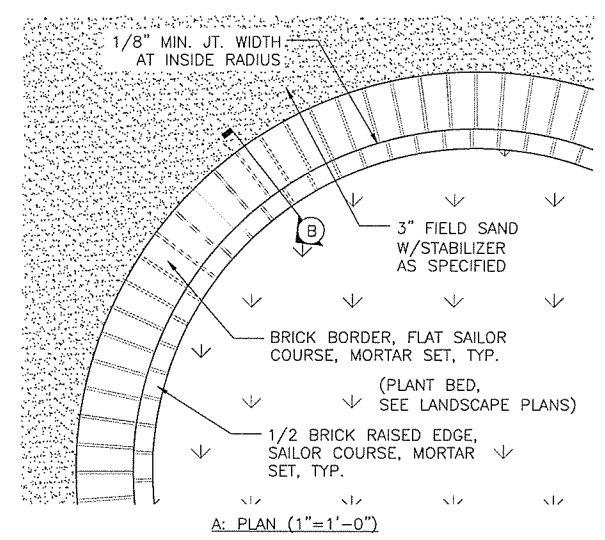


BRICK MATERIAL FOR MAIN AXIS WALKWAY SHALL BE: OLD VIRGINIA MONTICELLO MODULAR BRICK PAVERS  
CONTACT: POWER BRICK COMPANY, WAYNE PYLES, 706-227-4398

BRICK MATERIAL FOR CIRCULAR PLAZA SHALL BE: OLD VIRGINIA MONTICELLO MODULAR BRICK PAVERS  
CONTACT: POWER BRICK COMPANY, WAYNE PYLES, 706-227-4398

**1 BRICK WALKWAY, MAIN AXIS**  
SCALE: AS SHOWN

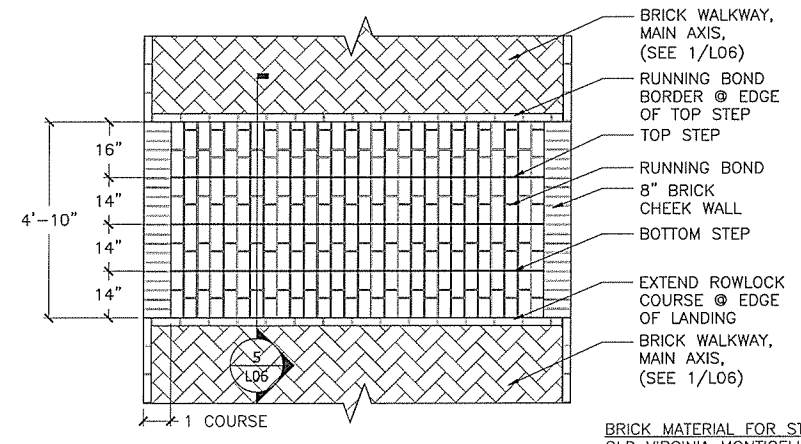
**2 CIRCULAR PLAZA**  
SCALE: AS SHOWN



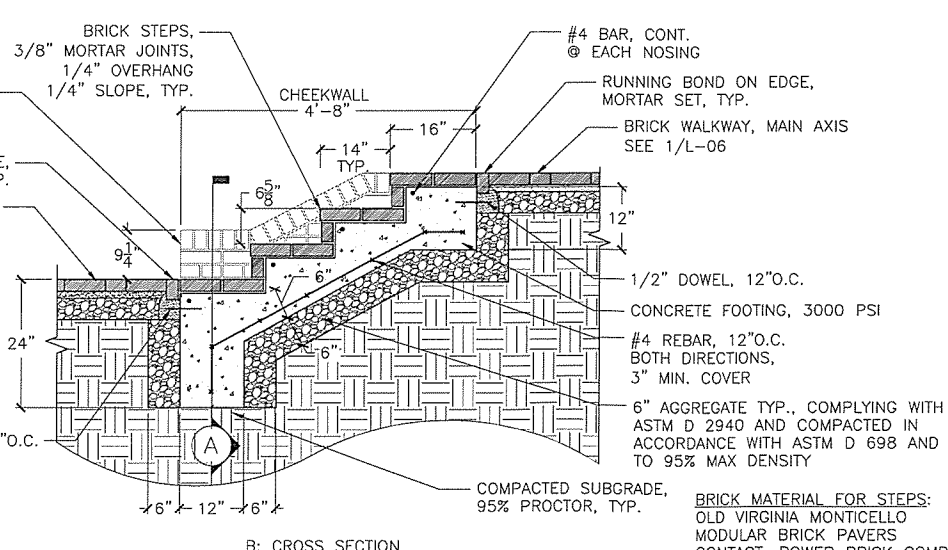
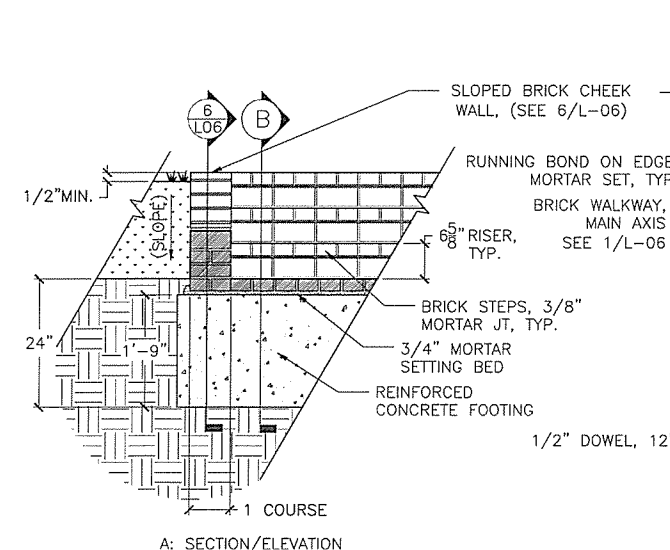
BRICK MATERIAL: OLD VIRGINIA MONTICELLO MODULAR BRICK PAVERS  
CONTACT: POWER BRICK COMPANY, WAYNE PYLES, 706-227-4398

**3 LANDSCAPE BORDER @ CIRCULAR PLAZA**  
SCALE: AS SHOWN

**4 BRICK STEPS, MAIN AXIS: PLAN**  
SCALE: 1/2"=1'-0"



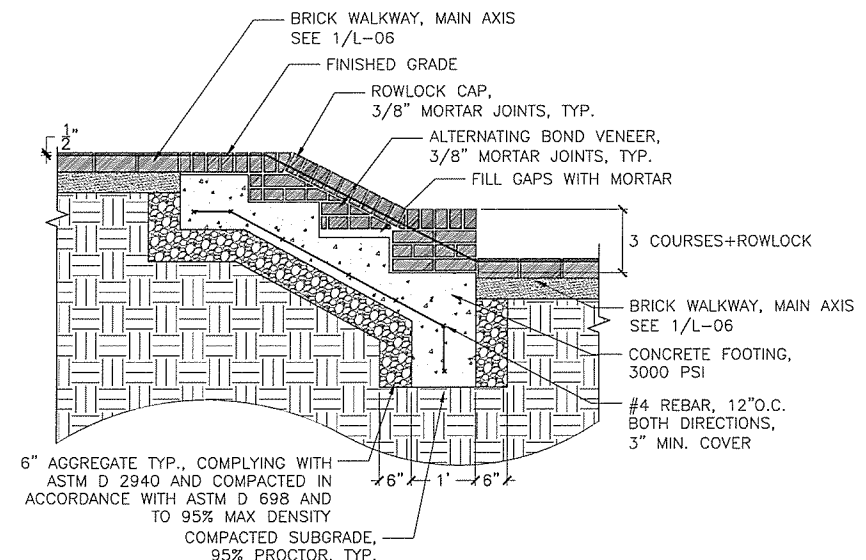
BRICK MATERIAL FOR STEPS: OLD VIRGINIA MONTICELLO MODULAR BRICK PAVERS  
CONTACT: POWER BRICK COMPANY, WAYNE PYLES, 706-227-4398



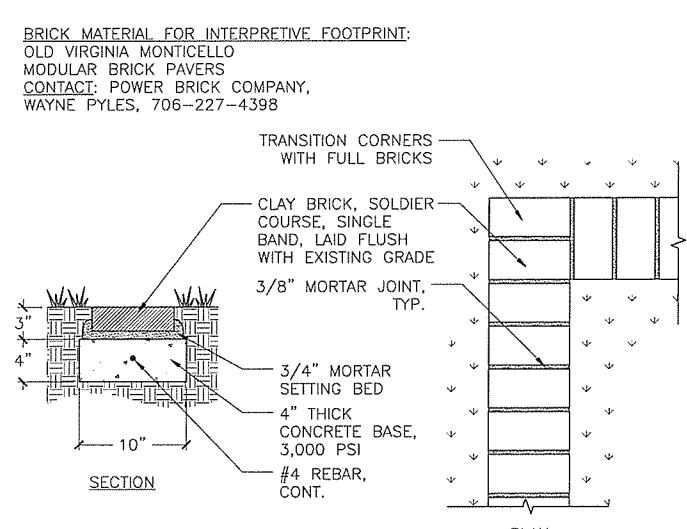
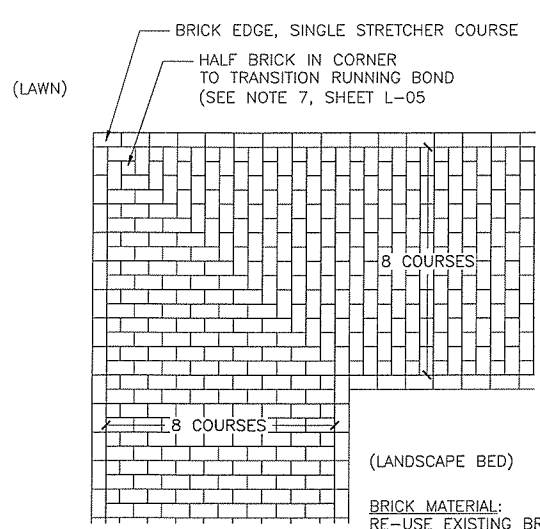
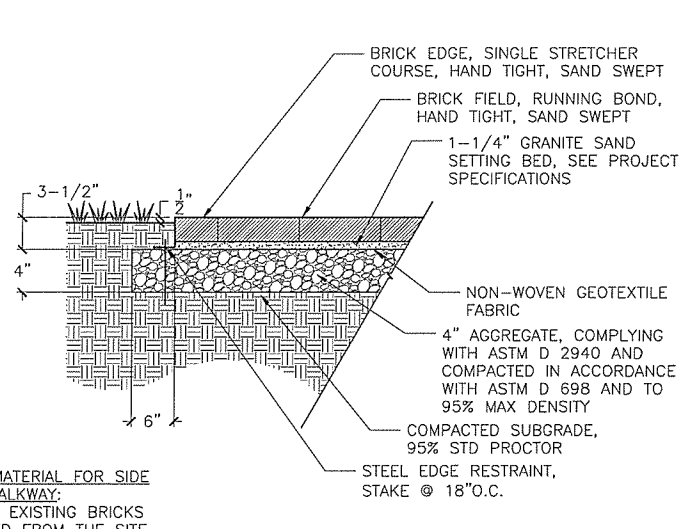
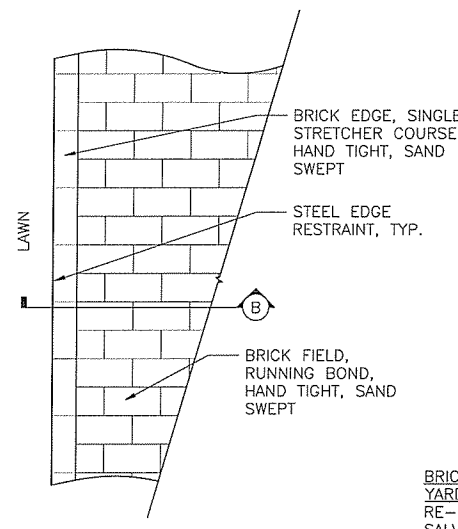
BRICK MATERIAL FOR STEPS: OLD VIRGINIA MONTICELLO MODULAR BRICK PAVERS  
CONTACT: POWER BRICK COMPANY, WAYNE PYLES, 706-227-4398

**5 BRICK STEPS, MAIN AXIS: SECTIONS**  
SCALE: 3/4"=1'-0"

**6 BRICK CHEEK WALL**  
SCALE: 1"=1'-0"



**DRAFT NOT FOR CONSTRUCTION**

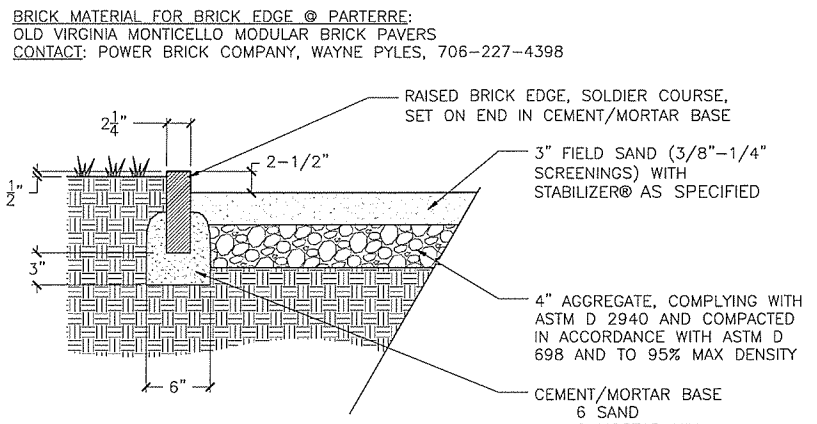
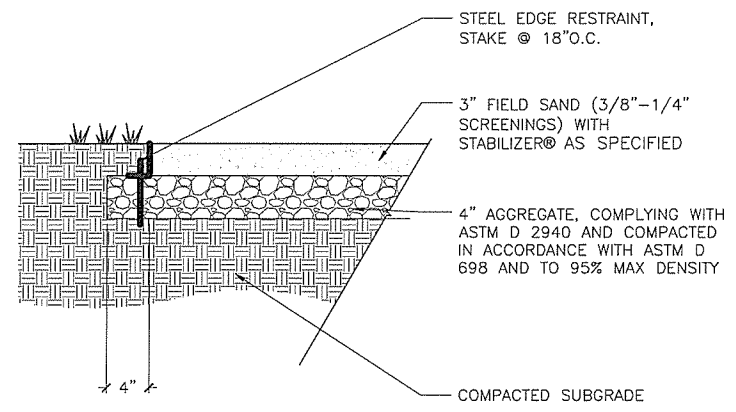


BRICK MATERIAL FOR INTERPRETIVE FOOTPRINT:  
 OLD VIRGINIA MONTICELLO  
 MODULAR BRICK PAVERS  
 CONTACT: POWER BRICK COMPANY,  
 WAYNE PYLES, 706-227-4398

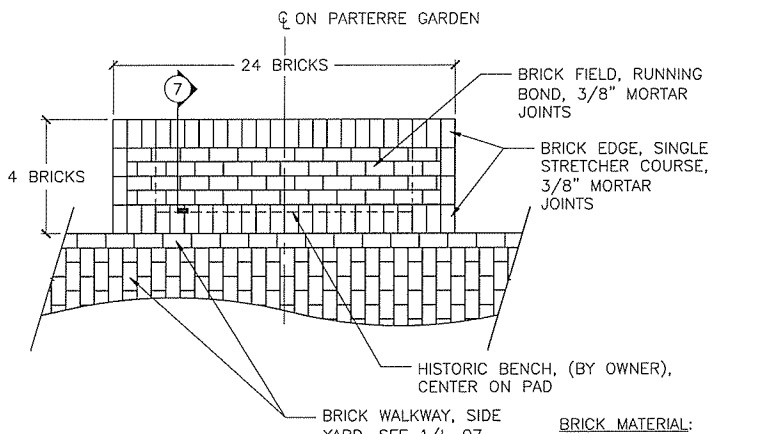
**1** BRICK WALKWAY, SIDE YARD  
 SCALE: 1" = 1'-0"

**2** BRICK WALKWAY, SIDE YARD: CORNER TRANSITION  
 SCALE: N.T.S.

**3** INTERPRETIVE BRICK FOOTPRINT  
 SCALE: 1-1/2" = 1'-0"



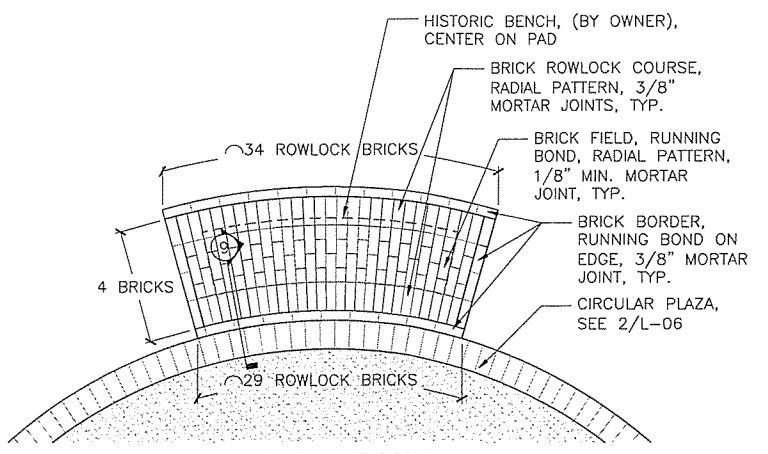
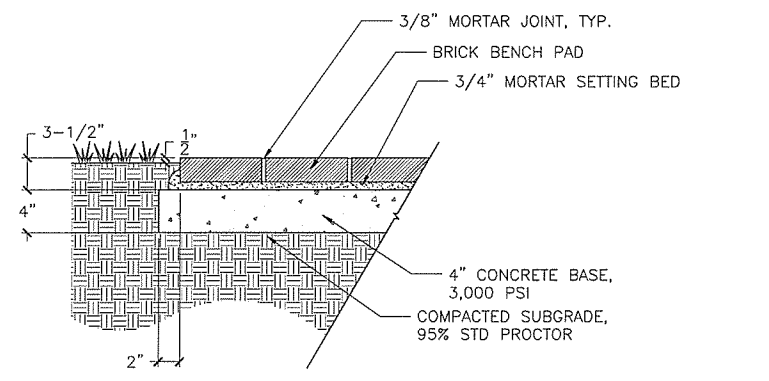
BRICK MATERIAL FOR BRICK EDGE @ PARTERRE:  
 OLD VIRGINIA MONTICELLO MODULAR BRICK PAVERS  
 CONTACT: POWER BRICK COMPANY, WAYNE PYLES, 706-227-4398



**4** GRAVEL PATH WITH STEEL EDGE  
 SCALE: 1-1/2" = 1'-0"

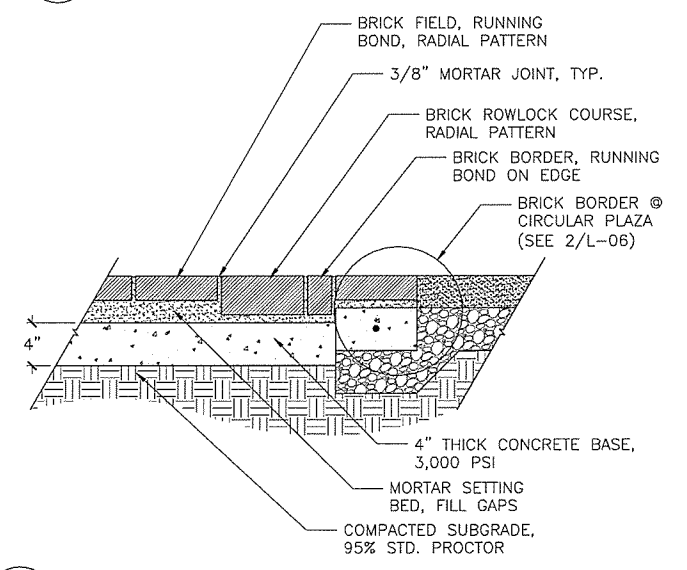
**5** GRAVEL PATH WITH BRICK EDGE, PARTERRE GARDEN  
 SCALE: 1-1/2" = 1'-0"

**6** HISTORIC BENCH  
 SCALE: 1/2" = 1'-0"



BRICK MATERIAL FOR BENCH AT CIRCULAR PLAZA:  
 OLD VIRGINIA MONTICELLO MODULAR BRICK PAVERS  
 CONTACT: POWER BRICK COMPANY, WAYNE PYLES, 706-227-4398

**8** BENCH @ CIRCULAR PLAZA  
 SCALE: 1/2" = 1'-0"



**9** BENCH @ CIRCULAR PLAZA: SECTION  
 SCALE: 1-1/2" = 1'-0"



Seal:  
 Date: 12.01.2014  
 Project No: 2014-011  
 Drawn By: MF  
 Checked By: MK

Ware-Lyndon House Front Landscape  
 Athens, Georgia  
 Athens-Clarke County Unified Government  
 293 Hoyt Street  
 Athens, GA 30606  
 phone: 706-613-3623  
 fax: XXX-XXX-XXXX

Revisions:

NO.	DATE	DESCRIPTION

Sheet Title:  
**Construction Details**

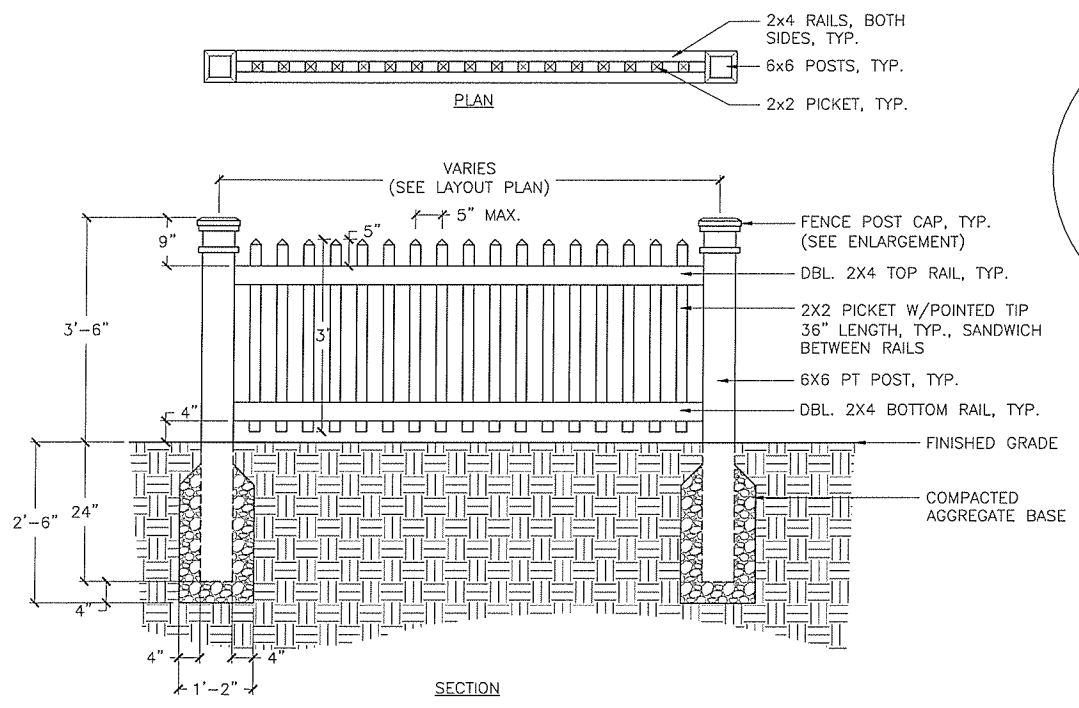
Sheet No:  
**L-07**

**DRAFT NOT FOR CONSTRUCTION**

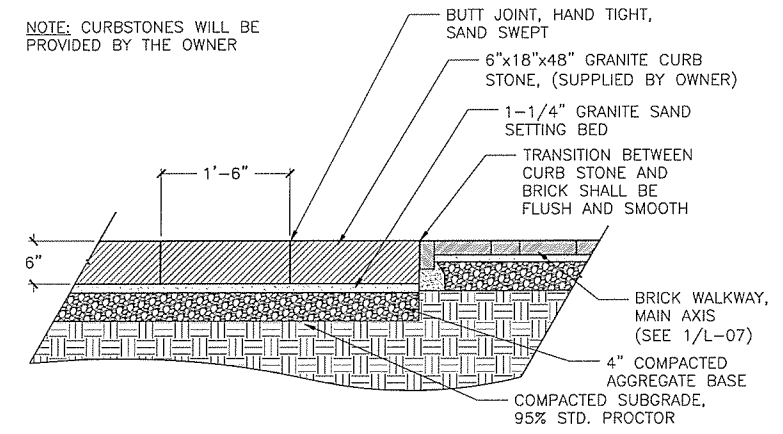
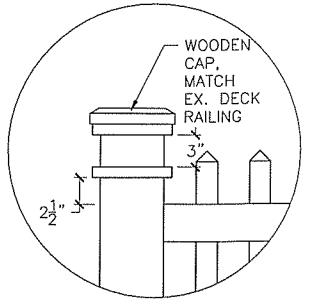


Revisions:

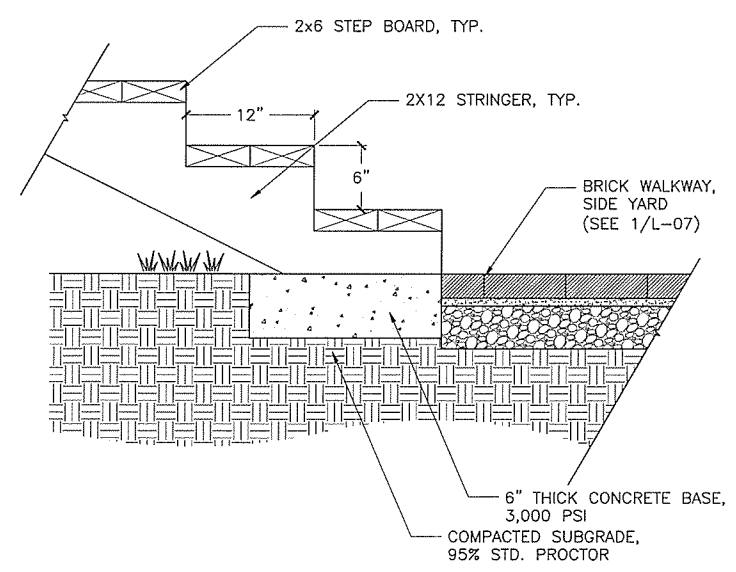
NO.	DATE	DESCRIPTION



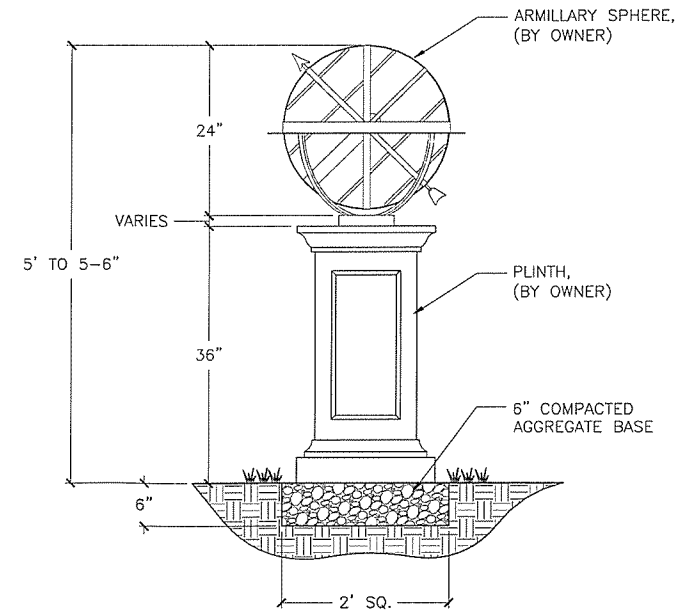
1 PARTERRE GARDEN FENCE  
SCALE: 3/4" = 1'-0"



2 GRANITE CURB STONE PATH  
SCALE: 1" = 1'-0"



3 PORCH STEPS  
SCALE: 1" = 1'-0"

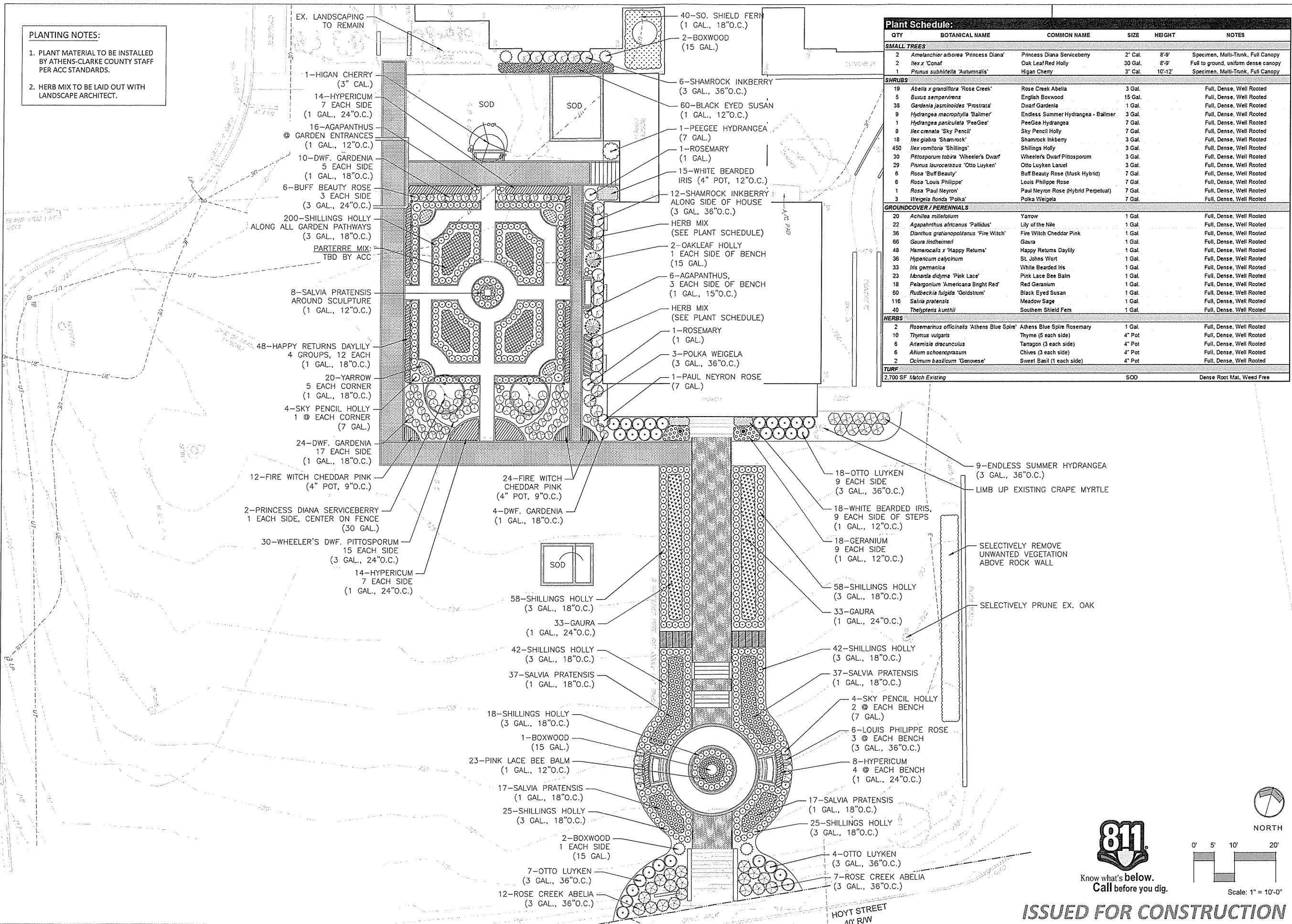


4 ARMILLARY SCULPTURE  
SCALE: 1" = 1'-0"

**PLANTING NOTES:**

1. PLANT MATERIAL TO BE INSTALLED BY ATHENS-CLARKE COUNTY STAFF PER ACC STANDARDS.
2. HERB MIX TO BE LAID OUT WITH LANDSCAPE ARCHITECT.

EX. LANDSCAPING TO REMAIN



Plant Schedule:						
QTY	BOTANICAL NAME	COMMON NAME	SIZE	HEIGHT	NOTES	
<b>SMALL TREES</b>						
2	<i>Amelanchier arborea</i> 'Princess Diana'	Princess Diana Serviceberry	2" Gal.	8'-9"	Specimen, Multi-Trunk, Full Canopy	
1	<i>Ilex x 'Conat'</i>	Oak Leaf Red Holly	30 Gal.	8'-9"	Full to ground, uniform dense canopy	
1	<i>Prunus subhirtella</i> 'Autumnalis'	Higan Cherry	3" Cal.	10'-12"	Specimen, Multi-Trunk, Full Canopy	
<b>SHRUBS</b>						
19	<i>Abelia x grandiflora</i> 'Rose Creek'	Rose Creek Abelia	3 Gal.		Full, Dense, Well Rooted	
5	<i>Buxus sempervirens</i>	English Boxwood	15 Gal.		Full, Dense, Well Rooted	
38	<i>Gardenia jasminoides</i> 'Prostrata'	Dwarf Gardenia	1 Gal.		Full, Dense, Well Rooted	
9	<i>Hydrangea macrophylla</i> 'Bailmer'	Endless Summer Hydrangea - Bailmer	3 Gal.		Full, Dense, Well Rooted	
1	<i>Hydrangea paniculata</i> 'PeeGee'	PeeGee Hydrangea	7 Gal.		Full, Dense, Well Rooted	
8	<i>Ilex crenata</i> 'Sky Pencil'	Sky Pencil Holly	7 Gal.		Full, Dense, Well Rooted	
18	<i>Ilex glabra</i> 'Shamrock'	Shamrock Inkberry	3 Gal.		Full, Dense, Well Rooted	
450	<i>Ilex vomitoria</i> 'Shillings'	Shillings Holly	3 Gal.		Full, Dense, Well Rooted	
30	<i>Pittosporum tobira</i> 'Wheeler's Dwarf'	Wheeler's Dwarf Pittosporum	3 Gal.		Full, Dense, Well Rooted	
29	<i>Prunus laurocerasus</i> 'Otto Luyken'	Otto Luyken Laurel	3 Gal.		Full, Dense, Well Rooted	
6	<i>Rosa</i> 'Buff Beauty'	Buff Beauty Rose (Musk Hybrid)	7 Gal.		Full, Dense, Well Rooted	
6	<i>Rosa</i> 'Louis Philippe'	Louis Philippe Rose	7 Gal.		Full, Dense, Well Rooted	
1	<i>Rosa</i> 'Paul Neyron'	Paul Neyron Rose (Hybrid Perpetual)	7 Gal.		Full, Dense, Well Rooted	
3	<i>Weigela florida</i> 'Polka'	Polka Weigela	7 Gal.		Full, Dense, Well Rooted	
<b>GROUNDCOVER / PERENNIALS</b>						
20	<i>Achillea millefolium</i>	Yarrow	1 Gal.		Full, Dense, Well Rooted	
22	<i>Agapanthus africanus</i> 'Pallidus'	Lily of the Nile	1 Gal.		Full, Dense, Well Rooted	
36	<i>Dianthus gratianopolitanus</i> 'Fire Witch'	Fire Witch Cheddar Pink	1 Gal.		Full, Dense, Well Rooted	
86	<i>Gaura lindheimeri</i>	Gaura	1 Gal.		Full, Dense, Well Rooted	
48	<i>Hemerocallis x 'Happy Returns'</i>	Happy Returns Daylily	1 Gal.		Full, Dense, Well Rooted	
36	<i>Hypericum calycinum</i>	St. Johns Wort	1 Gal.		Full, Dense, Well Rooted	
33	<i>Iris germanica</i>	White Bearded Iris	1 Gal.		Full, Dense, Well Rooted	
23	<i>Monarda didyma</i> 'Pink Lace'	Pink Lace Bee Balm	1 Gal.		Full, Dense, Well Rooted	
18	<i>Pelargonium</i> 'Americana Bright Red'	Red Geranium	1 Gal.		Full, Dense, Well Rooted	
60	<i>Rudbeckia fulgida</i> 'Goldstum'	Black Eyed Susan	1 Gal.		Full, Dense, Well Rooted	
116	<i>Salvia pratensis</i>	Meadow Sage	1 Gal.		Full, Dense, Well Rooted	
40	<i>Thelyptis kunthii</i>	Southern Shield Fern	1 Gal.		Full, Dense, Well Rooted	
<b>HERBS</b>						
2	<i>Rosemarinus officinalis</i> 'Athens Blue Spire'	Athens Blue Spire Rosemary	1 Gal.		Full, Dense, Well Rooted	
10	<i>Thymus vulgaris</i>	Thyme (5 each side)	4" Pot		Full, Dense, Well Rooted	
6	<i>Artemisia dracunculoides</i>	Tarragon (3 each side)	4" Pot		Full, Dense, Well Rooted	
6	<i>Allium schoenoprasum</i>	Chives (3 each side)	4" Pot		Full, Dense, Well Rooted	
2	<i>Ocimum basilicum</i> 'Genovese'	Sweet Basil (1 each side)	4" Pot		Full, Dense, Well Rooted	
<b>TURF</b>						
2,700 SF	Match Existing	SOD			Dense Root Mat, Weed Free	



Seal:

Date: 11.25.2014  
 Project No: 2014-011  
 Drawn By: MF  
 Checked By: MK

**Ware-Lyndon House Front Landscape**  
 Athens, Georgia

Athens-Clarke County Unified Government  
 293 Hoyt Street  
 Athens, GA 30606

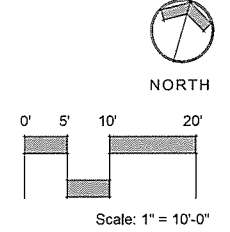
phone: 706-613-3623 fax: xxx-xxx-xxxx

Revisions:

NO.	DATE	DESCRIPTION

Sheet Title:  
**Planting Plan**

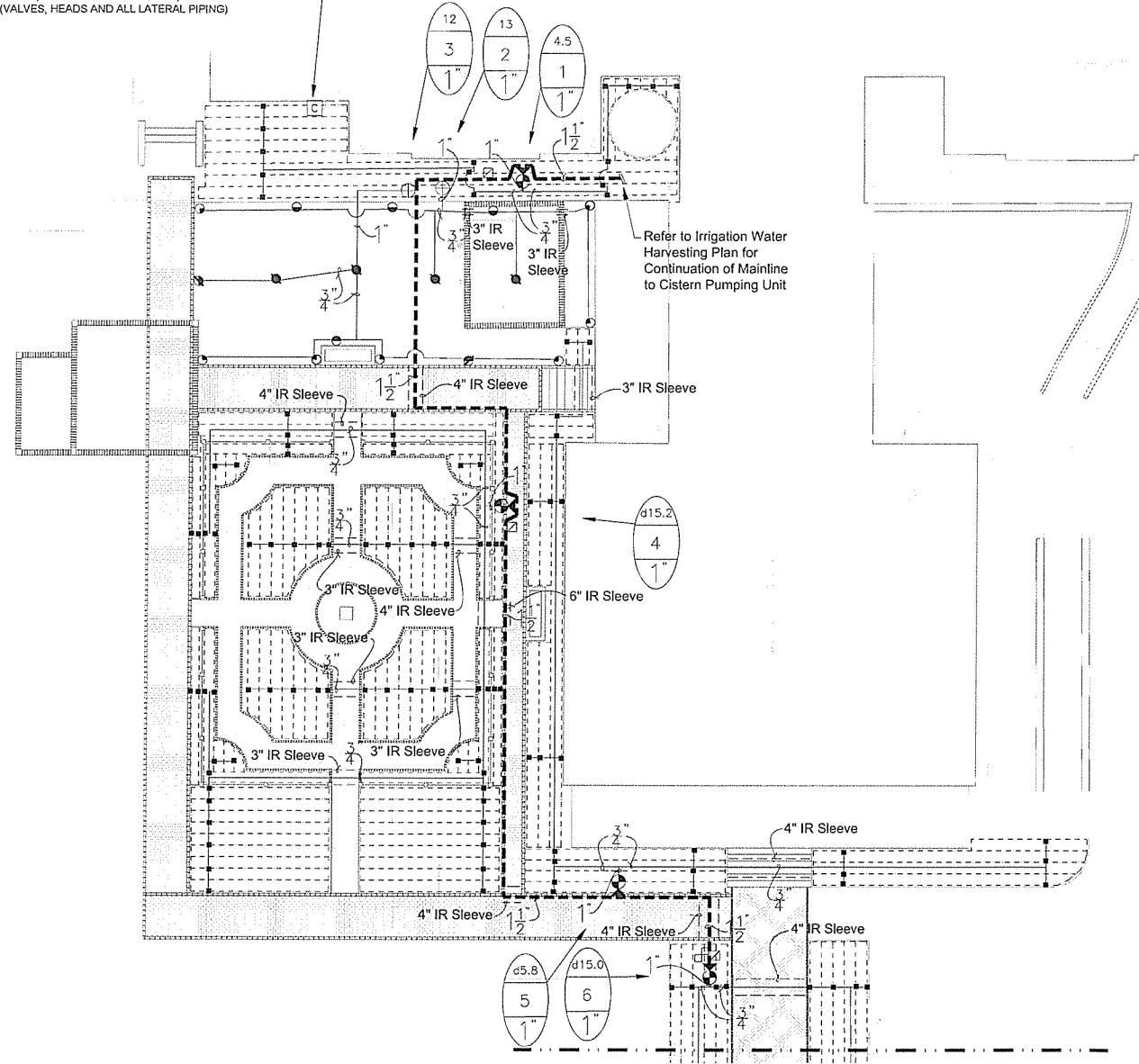
Sheet No:  
**L 09**



**ISSUED FOR CONSTRUCTION**

SPECIAL NOTE:  
CONTRACTOR SHALL PROVIDE SEPARATE PRICING FOR  
INSTALLATION OF THE FOLLOWING:  
\*ZONE #1 (VALVE, TUBING, AND ALL LATERAL PIPING)  
\*ZONES #2 AND #3 (VALVES, HEADS AND ALL LATERAL PIPING)

Approximate Irrigation Controller Location.  
Owner's Representative Shall Pinpoint Exact  
Location at Site. Irrigation Contractor Shall  
Hardwire 120 VAC Power to Controller.

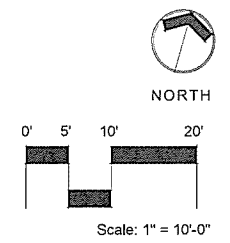
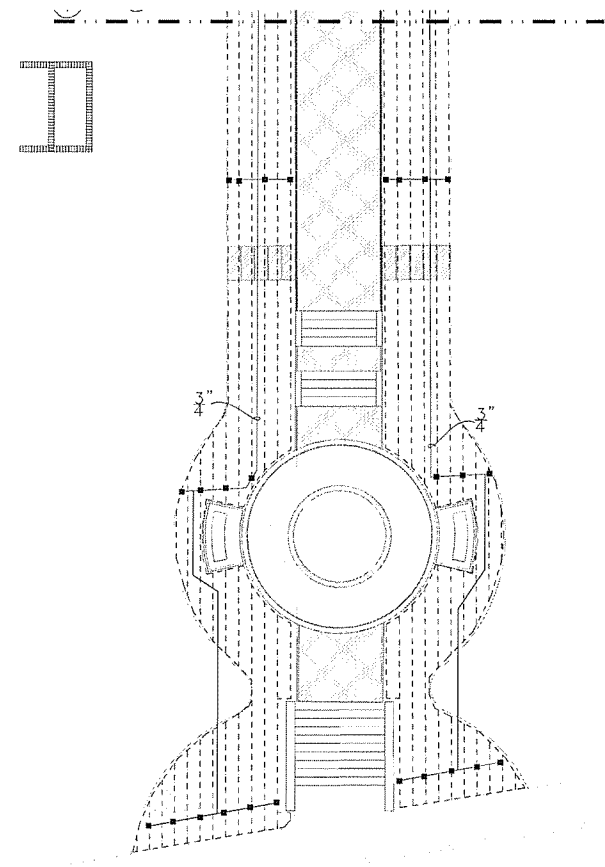


**IRRIGATION LEGEND**

- |   |   |
|---|---|
| <p>REFER TO PLANS/DETAILS FOR MORE SPECIFICS ON IRRIGATION WATER HARVESTING SYSTEM. INCLUDES CISTERN (ABOVE AND BELOW GROUND), CISTERN PUMPING UNIT, TRANSFER PUMPING UNIT AND ALL ASSOCIATED EQUIPMENT.</p> <p>MANUAL DRAIN VALVE. SCH 80 PVC TRUE UNION BALL VALVE. DETAIL-E.</p> <p>RAIN BIRD ESP-16-LXME CONTROLLER. 16 STATION, MODULAR CONTROLLER, FOUR PROGRAMS, WALL MOUNTED. DETAIL-F. IRRIGATION CONTRACTOR SHALL ALSO INSTALL A WIRELESS MINI II RAIN SENSOR AND A FREEZE-CLIK DEVICE.</p> <p>RAIN BIRD 100-PEB-PRS PLASTIC ELECTRIC REMOTE CONTROL VALVE. 1" SIZE. MOUNTED WITH SCH 80 PVC TRUE UNION BALL VALVE WITH PRESSURE REGULATION DEVICES. DETAIL-A.</p> <p>RAIN BIRD 1806-SAM, 6" POP-UP LAWN SPRAY SPRINKLER, 12" RADIUS, FULL-2.0 GPM, HALF-1.0 GPM, QUARTER-0.5 GPM, 30 PSI. DETAIL-C.</p> <p>RAIN BIRD 1806-SAM, 6" POP-UP LAWN SPRAY SPRINKLER, 15" RADIUS, FULL-4.0 GPM, HALF-2.0 GPM, QUARTER-1.0 GPM, 30 PSI. DETAIL-C.</p> <p>RAIN BIRD 1806-SAM, 6" LAWN POP-UP SIDE STRIP SPRAY SPRINKLER, 9' X 18" RADIUS, 1.5 GPM, 30 PSI. DETAIL-C.</p> <p>RAIN BIRD 1806-SAM, 6" LAWN SIDE STRIP SPRAY SPRINKLER, 4' X 30' RADIUS, 1.5 GPM, 30 PSI. DETAIL-C.</p> <p>RAIN BIRD 1806-SAM, 6" LAWN END STRIP SPRAY SPRINKLER, 4' X 15' RADIUS, 1.0 GPM, 30 PSI. DETAIL-C.</p> <p>RAIN BIRD #5 QUICK COUPLING VALVE 1" SIZE. CONTRACTOR TO SUPPLY TWO QCV KEYS AND MATCHING HOSE SWIVELS. DETAIL-B.</p> <p>SCH 80 PVC TRUE UNION BALL VALVE, SIZED SAME AS MAINLINE, MOUNTED IN CARSON VALVE BOX. DETAIL-D.</p> <p>RAIN BIRD DRIP ZONE ASSEMBLY KIT, MODEL #XCZ-100-PRB-COM. 1" SIZE DETAIL-L.</p> | <p>POINT OF CONNECTION - DRIP LINE TUBING TO PVC PIPE, DETAIL-M,N.</p> <p>DRIP TUBING: RAIN BIRD XFS DRIPLINE DRIP TUBING, .6 GPH, 12" CENTERS, STAKED EVERY TURN OR EVERY 4'. INSTALL NETAFIM AIR RELIEF VALVE KIT IN 10" CIRCULAR VALVE BOX AT HIGH POINT OF EACH ZONE AND INSTALL NETAFIM DRIP DRAIN VALVE(S) IN 10" CIRCULAR VALVE BOX AT LOW POINT(S) OF EACH ZONE. INSTALL RAIN BIRD DRIP OPERATING KIT AT EACH END OF ALL DRIP ZONE AREAS. DETAIL-F,M,N,O,P,Q.</p> <p>MAINLINE PIPE: 1-1/2" SIZE IF NOT NOTED, CLASS 200 PVC.</p> <p>IRRIGATION SLEEVE: CLASS 200 PVC, SIZE NOTED ON PLAN. DETAIL-H.</p> <p>LATERAL LINE PIPE: CLASS 200 PVC, SIZE NOTED.</p> <p>3" ELECTRICAL CONDUIT SLEEVE.</p> <p>NOTES:</p> <ol style="list-style-type: none"> <li>ALL SPRINKLERS WILL BE MOUNTED ON (3) MARLEX STREET ELLS WITH A SCHED. 80 NIPPLE SIZE OF SPRINKLER INLET.</li> <li>CONTRACTOR TO UTILIZE A AUTOMATIC DRAIN CHECK VALVE DEVICE WHERE LOW HEAD DRAINAGE MAY OCCUR.</li> <li>ALL WIRE WILL BE COLOR CODED DIRECT BURIAL UL/UF WIRE: COMMON (WHITE) #12-1, CONTROL (RED) #14-1.</li> <li>ALL PIPING AND WIRING UNDER HARDTOPS WILL BE IN CLASS 200 PVC PIPE SLEEVE.</li> </ol> <p>TYPICAL VALVE INDICATOR</p> <p>28.5 GALLONS PER MIN.<br/>10 STATION NUMBER<br/>1 1/2" VALVE SIZE</p> |
|---|---|

**GENERAL NOTES**

- ALL MAINLINES TO HAVE A MINIMUM OF 18" OF COVER. (CLASS 200 PVC PIPE).
- ALL LATERAL AND SUB-MAIN PIPE TO HAVE A MINIMUM OF 12" OF COVER. (CLASS 200 PVC PIPE).
- NO ROCKS, BOULDER, OR OTHER EXTRANEIOUS MATERIALS TO BE USED IN BACKFILLING OF TRENCH.
- ALL PIPE TO BE INSTALLED AS PER MANUFACTURERS' SPECIFICATIONS.
- ALL THREADED JOINTS TO BE COATED WITH TEFLON TAPE OR LIQUID TEFLON.
- ALL LINES TO BE THOROUGHLY FLUSHED BEFORE INSTALLATION OF SPRINKLER HEADS.
- SPRINKLER AND RELATED EQUIPMENT TO BE INSTALLED AS PER DETAILS.
- ALL ELECTRICAL JOINTS TO BE MADE USING WATERPROOF CONNECTIONS AS SHOWN ON DETAILS.
- ALL EQUIPMENT NOT SPECIFIED IN THE LEGEND SHALL BE DETERMINED AND FURNISHED BY THE CONTRACTOR.
- NO ELECTRICAL CONNECTIONS SHALL BE MADE IN THE FIELD EXCEPT AT A VALVE CONTROL BOX OR ANOTHER VALVE BOX SPECIFICALLY FOR CONNECTIONS.
- ANY DISCREPANCY BETWEEN THIS SHEET AND OTHERS IN THIS SET MUST BE REFERRED TO THE IRRIGATION CONSULTANT BY THE CONTRACTOR FOR CLARIFICATION BEFORE PRECEEDING WITH THE WORK.
- ALL 24 VOLT WIRE SHALL BE #12 UL/UL FOR COMMON WIRE, AND #14 UL/UL FOR CONTROL WIRES, DIRECT BURIAL, SOLID COPPER.
- CONTRACTOR TO BE RESPONSIBLE FOR PROPER COVERAGE OF AREAS TO BE WATERED. I.E. ADJUST HEADS WITH INSUFFICIENT COVERAGE DUE TO BLOCKAGE BY EXISTING OR PROPOSED SITE FEATURES.
- CONTRACTOR TO REFER TO LANDSCAPE PLAN TO KEEP SPRINKLER EQUIPMENT AND ACCESSORY MATERIAL FROM INTERFERING WITH PROPER PLANTING. I.E. VERIFY ROOT BALL SIZE FOR PLANTING.
- CONTRACTOR SHALL PROVIDE EXPANSION COILS AT EACH WIRE CONNECTION IN VALVE BOX (WRAP AROUND 3/4" PIPE 12 TIMES).
- CONTRACTOR TO UTILIZE APPROPRIATE AUTOMATIC DRAIN DEVICE WHERE LOW HEAD DRAINAGE MAY OCCUR.
- ALL SPRINKLERS TO BE MOUNTED ON SWING JOINTS - REFER TO DETAILS.
- CONTRACTOR SHALL UTILIZE VALVE I.D. TAGS ON ALL REMOTE CONTROL VALVES.
- 24 VOLT WIRE SHALL BE COLOR CODED, COMMON-WHITE, CONTROL-RED.
- CONTRACTOR SHALL INSTALL MANUFACTURERS' RECOMMENDED GROUNDING EQUIPMENT FOR POWER SUPPLY AND VALVE OUTPUT WITH (2) 5/8" COPPER CLAD GROUND RODS.
- CONTRACTOR SHALL INSTALL MANUFACTURERS' RECOMMENDATION ON FAULT GROUND AND LIGHTNING PROTECTION.
- CONTRACTOR SHALL INSTALL MANUFACTURERS' RECOMMENDATION ON CONTROLLER GROUNDING MUST BE AS PER ASIC REQUIREMENTS
- ALL MATERIAL TO BE SUPPLIED BY CONTRACTOR TO OWNER.
  - TWO WRENCHES FOR DISASSEMBLING AND ADJUSTING EACH TYPE OF SPRINKLER HEADS AND VALVE SUPPLIED.
  - TWO KEYS FOR EACH OF THE AUTOMATIC CONTROLLERS.
  - TWO QUICK COUPLER KEYS WITH MATCHING HOSE SWIVELS.
- SYSTEM IS DIAGRAMMATIC TO IMPROVE CLARITY. ALL MAINLINE PIPING ELECTRIC VALVES AND WIRING ARE TO BE INSTALLED IN LANDSCAPE AREAS AND WITHIN PROPERTY BOUNDARIES. CONTRACTOR SHALL REFERENCE THE LANDSCAPE PLAN PRIOR TO THE INSTALLATION OF PIPING TO AVOID CONTACT WITH PLANT MATERIALS EXISTING OR NEW.
- CONTRACTOR TO ADD EXTENSION RISER TO POP-UP HEADS WHEN NEEDED FOR PROPER COVERAGE.
- CONTRACTOR SHALL INSTALL SPRINKLER EQUIPMENT 12" FROM FOUNDATIONS. ALSO INSTALL SPRINKLERS 4" FROM CURB OR WALKS.
- PRIOR TO BID IRRIGATION CONTRACTOR SHALL VERIFY RIGHT-OF-WAY AND BACKFLOW REQUIREMENTS. NO LATER THAN FIVE DAYS BEFORE BID SUBMITTALS CONTRACTOR SHALL NOTIFY CONSULTANT OF ANY CHANGES FROM PLANS AND SPECIFICATIONS.
- IRRIGATION CONTRACTOR SHALL PROVIDE THE OWNER AND LANDSCAPE ARCHITECT WITH A REPRODUCIBLE CROSS MEASURED AS-BUILT DRAWING OF THE INSTALLED IRRIGATION SYSTEM IN AUTOCAD 2010 FORMAT BEFORE FINAL ACCEPTANCE.
- A 1-YEAR WARRANTY PERIOD SHALL BE PROVIDED FOR SYSTEM AFTER SUBSTANTIAL COMPLETION IS ACCEPTED. START UP AND ADJUSTING OF SYSTEM IN SPRING TIME SHALL BE INCLUDED IN WARRANTY.
- PRIOR TO BID, CONTRACTOR SHALL VERIFY THAT ALL MATERIALS, INSTALLATION PARAMETERS AND OPERATIONS CONFORM TO ALL APPLICABLE CODES AND ORDINANCES. NO LATER THAN FIVE DAYS BEFORE BID SUBMITTALS CONTRACTOR SHALL NOTIFY IRRIGATION CONSULTANT/DESIGNER OF ANY CHANGES REQUIRED DUE TO CURRENT CODE OR ORDINANCE DISCREPANCIES. IF CONTRACTOR DOES NOT COMPLY TO THIS NOTIFICATION, THE CONTRACTOR SHALL BE RESPONSIBLE FOR ALL NECESSARY INSTALLATION CHANGE AND REDESIGN COSTS FOR NON-COMPLIANCE.
- UNLESS OTHERWISE NOTED, THE CONTRACTOR MUST COMPLETE 2 PRESSURE TESTS OF THE IRRIGATION SYSTEM MAINLINE (BOTH TO SHOW NO DROP IN PRESSURE DURING DURATION OF TEST.
  - 2-HOUR PRESSURE TEST AT 1.5 TIMES THE SYSTEM STATIC PRESSURE
  - 24-HOUR PRESSURE TEST AT THE SYSTEM STATIC PRESSURE
- IRRIGATION INSTALLATION CONTRACTOR SHALL PROVIDE OWNER WITH A COLOR-CODED ZONES DIAGRAM PLAN, 8-1/2"X11" LAMINATED SHEET(S), TO IDENTIFY CONTROLLER STATION TO THE CONTROL VALVE NUMBER FOR EACH CONTROLLER. TO BE LOCATED IN ADHESIVE POUCH ATTACHED INSIDE OF CONTROLLER(S).



Seal:

Date: 11.26.14  
Project No: 2014-011  
Drawn By: ICS  
Checked By: MK

**Ware-Lyndon House Front Landscape**  
Athens, Georgia

Athens-Clarke County Unified Government  
293 Hoyt Street  
Athens, GA 30606

phone: 706-613-3623

Revisions:

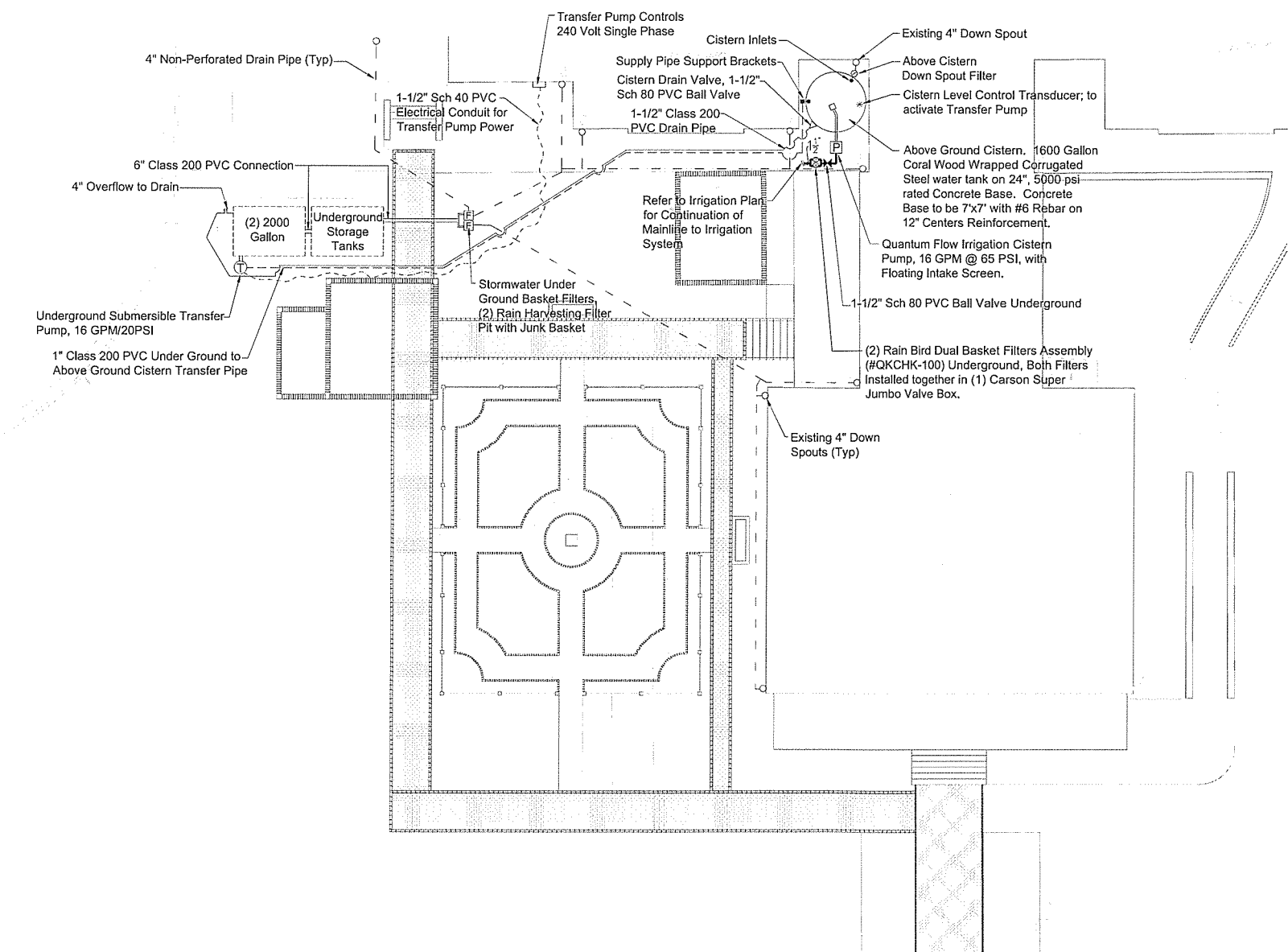
NO.	DATE	DESCRIPTION

Sheet Title:  
**Irrigation Plan**

Sheet No:  
**101**

Seal:

Date: 11.26.14  
Project No: 2014-011  
Drawn By: ICS  
Checked By: MK



Ware-Lyndon House Front Landscape  
Athens, Georgia

Athens-Clarke County Unified Government  
293 Hoyt Street  
Athens, GA 30606

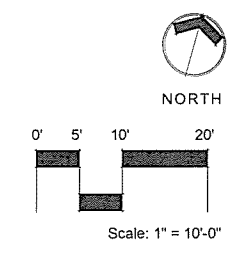
phone: 706-613-9623 fax:

Revisions:

NO.	DATE	DESCRIPTION

Sheet Title:  
Irrigation Water Harvesting Plan

Sheet No:  
102



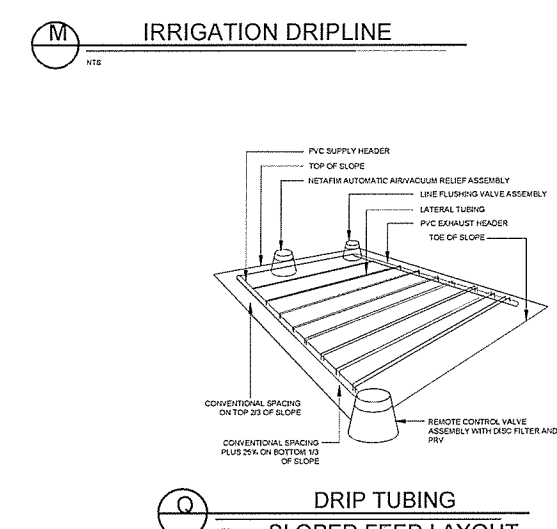
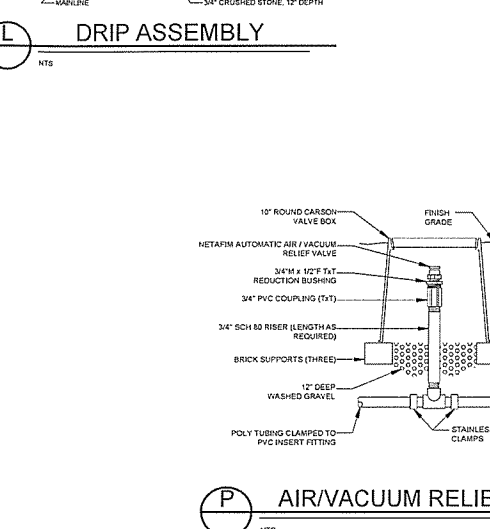
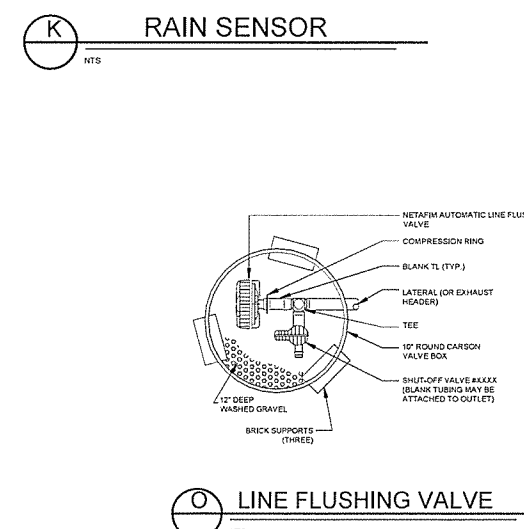
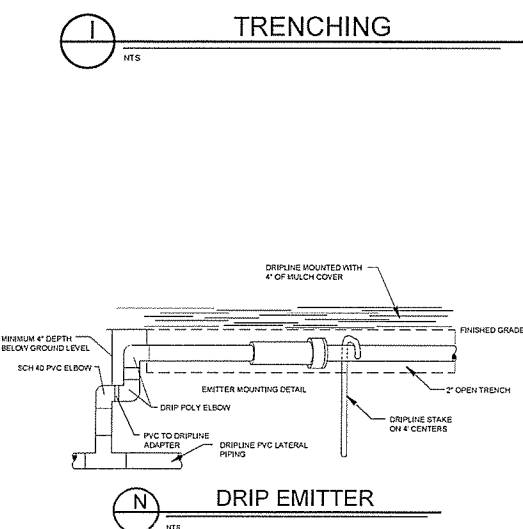
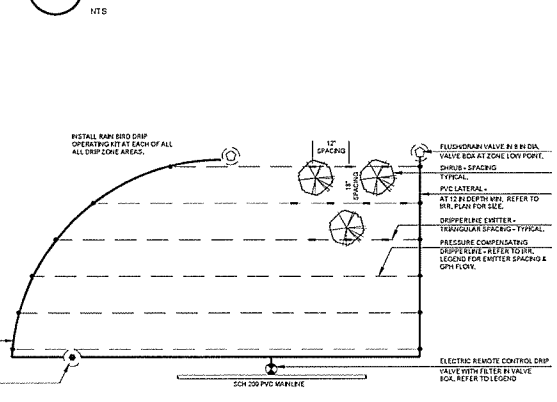
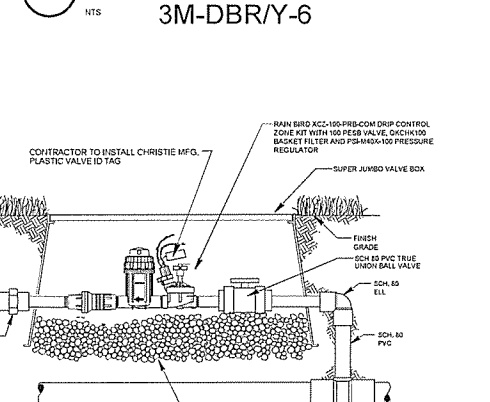
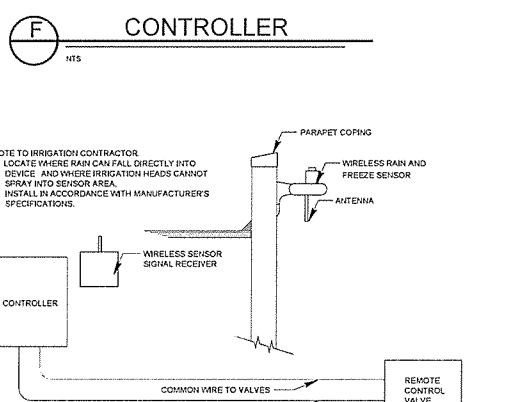
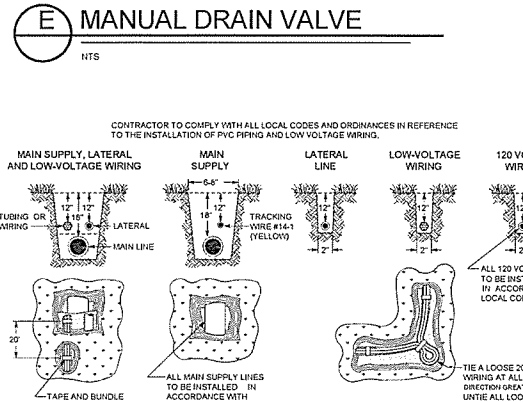
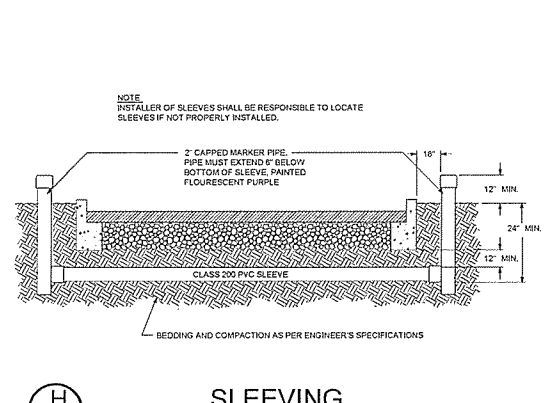
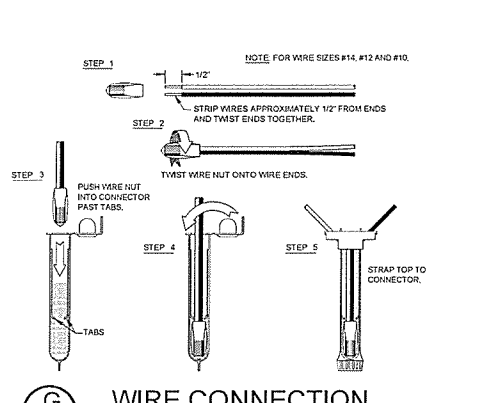
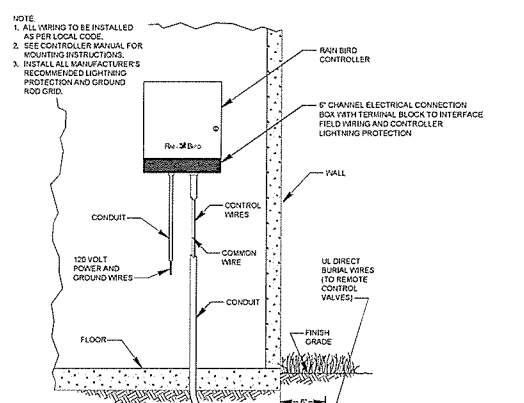
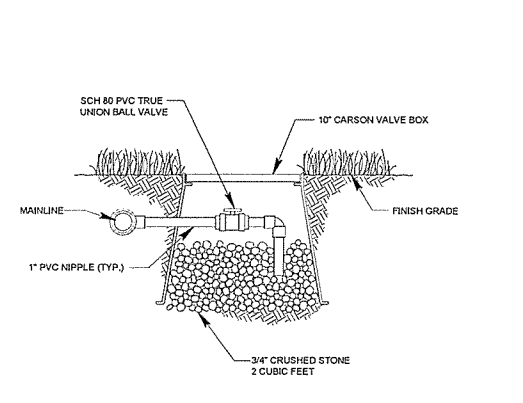
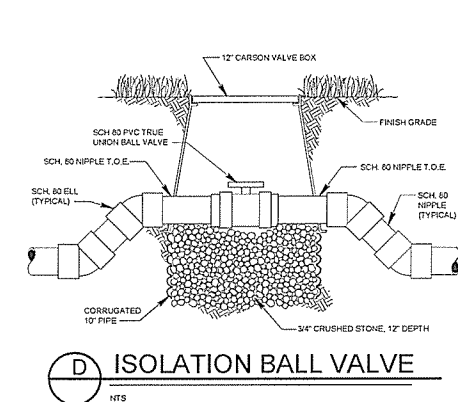
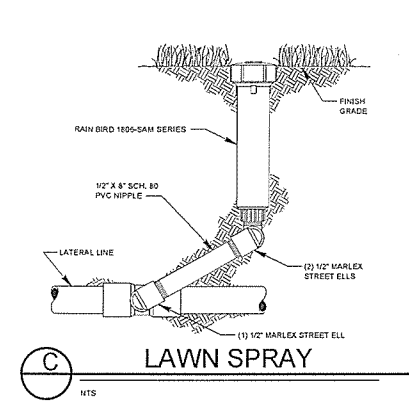
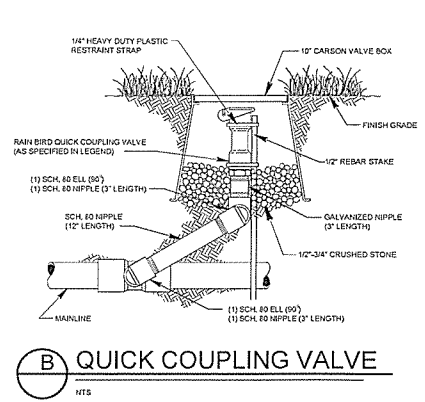
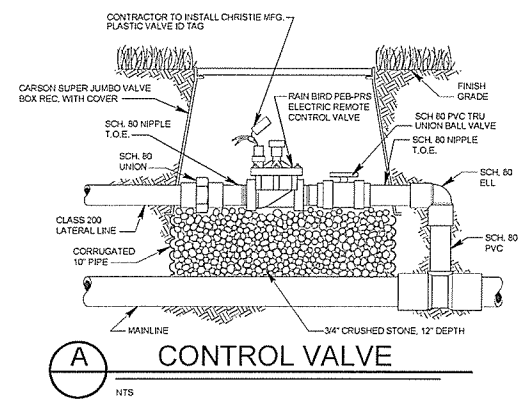
Seal:  
  
Date: 11.26.14  
Project No: 2014-011  
Drawn By: ICS  
Checked By: MK

Ware-Lyndon House Front Landscape  
Athens, Georgia  
Athens-Clarke County Unified Government  
293 Hoyt Street  
Athens, GA 30606  
phone: 706-613-3623

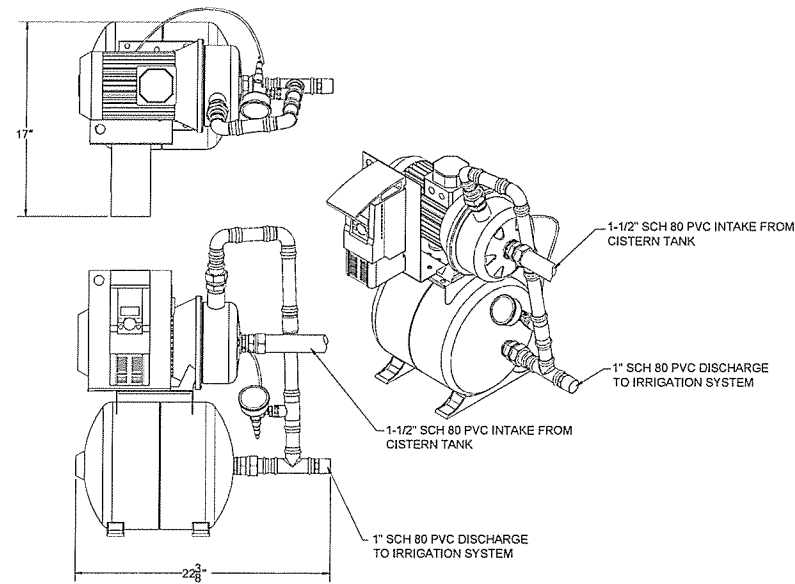
Revisions:

NO.	DATE	DESCRIPTION

Sheet Title:  
**Irrigation Details**  
Sheet No:  
**103**



NOTE:  
 DETAILS ARE NOT DRAWN TO SCALE AND ARE DIAGRAMMATIC FOR READABILITY  
 PURPOSES.



VARIOUS VIEWS OF PUMP UNIT LOCATED INSIDE ENCLOSURE

QUANTUM FLO MODEL #OFA 120/206  
 240 VAC, SINGLE PHASE POWER

WATER HARVESTING PUMPING SYSTEM CONTACT:  
 GORDON VAN DYKE WITH QUANTUM FLO, INC.  
 PHONE: 520.468.9743

RAIN HARVESTING RAIN AID TOP UP VALVE NOTE:

IRRIGATION INSTALLER SHALL INSTALL A 1" UNDERGROUND CISTERN TRANSFER WATER PIPE TO THE ABOVE GROUND CISTERN WATER HARVESTING TANK. THEN INSTALL A RAIN-HARVEST SYSTEM 1" RAIN AID TOP UP VALVE TO TURN ON THE UNDERGROUND CISTERN TRANSFER PUMP 6" FROM THE BOTTOM OF THE TANK, THEN ALSO TURN OFF THE TRANSFER WATER 24" FROM THE BOTTOM OF THE TANK.

INSTALLER SHALL INSTALL A TOP UP VALVE IN THE TANK ON TOP OF THE TANK TOP ACCESS COVER. THIS WILL GIVE THE INSTALLATION A 4" - 6" AIR GAP FOR UNDERGROUND CISTERN TRANSFER WATER.

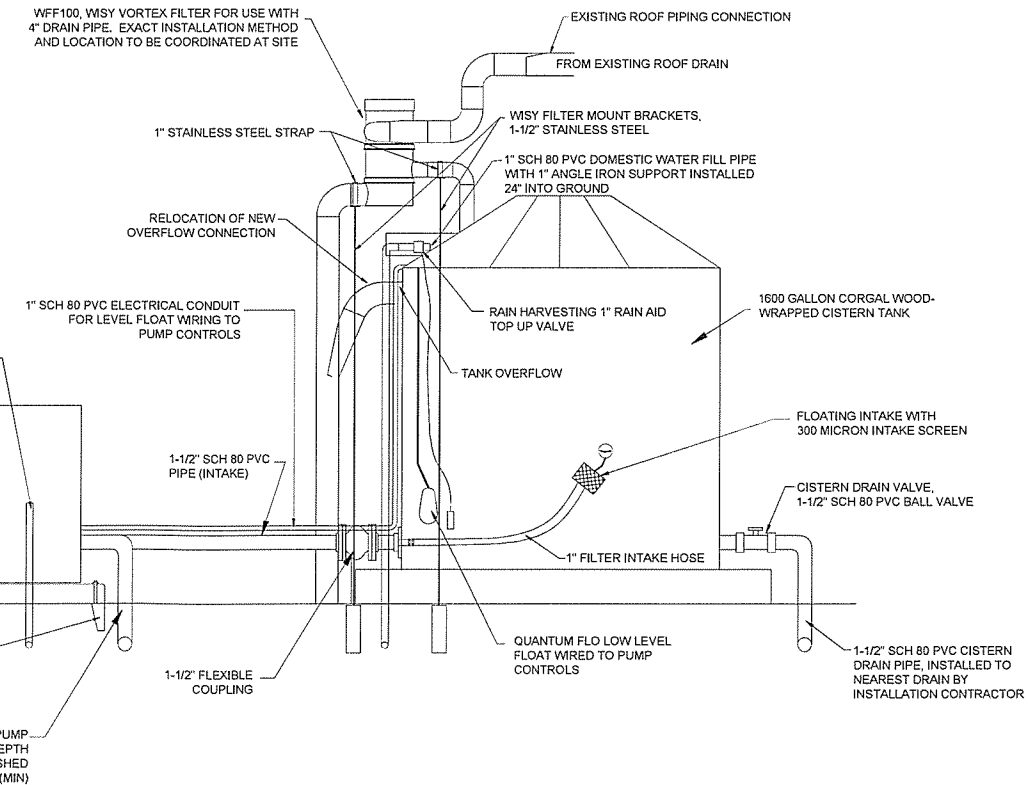
1-1/2" ELECTRICAL CONDUIT TO INSTALL OUTSIDE  
 240 VAC, SINGLE PHASE DISCONNECT TO PUMP UNIT VFD  
 \*ALL ELECTRICAL AS PER LOCAL CODES AND ORDINANCES\*

QUANTUM FLO ATOM-ENC ALUMINUM ENCLOSURE. 24"x24"x48"

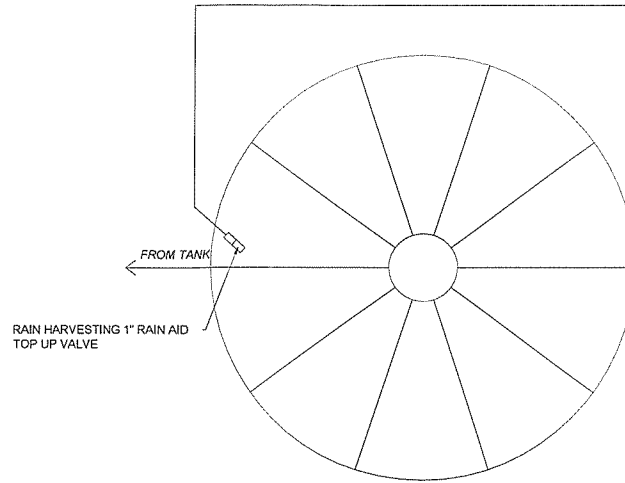
QUANTUM FLO PREFABRICATED FIBERGLASS PAD, TO BE SET ON 36"x36", 5000 PSI RATED REINFORCED CONCRETE PAD, PAD TO BE REINFORCED WITH 3/4" REBAR, 12" ON CENTERS.

6" CONCRETE MOUNTING FOOTERS WITH STAINLESS STEEL MOUNTING BOLT KIT

1-1/2" SCH 80 PVC PUMP DISCHARGE, 24" DEPTH BURY BELOW FINISHED GRADE (MIN)



1" UNDERGROUND CISTERN FILL PIPE LINE, TO BE SCH 40 PVC PIPE BELOW GROUND AND SCH 80 PVC PIPE ABOVE GROUND.



Seal:

Date: 11.26.14  
 Project No: 2014-011  
 Drawn By: ICS  
 Checked By: MK

Ware-Lyndon House Front Landscape  
 Athens, Georgia  
 Athens-Clarke County Unified Government  
 293 Hoyt Street  
 Athens, GA 30606

phone: 706-613-3623 fax:

Revisions:

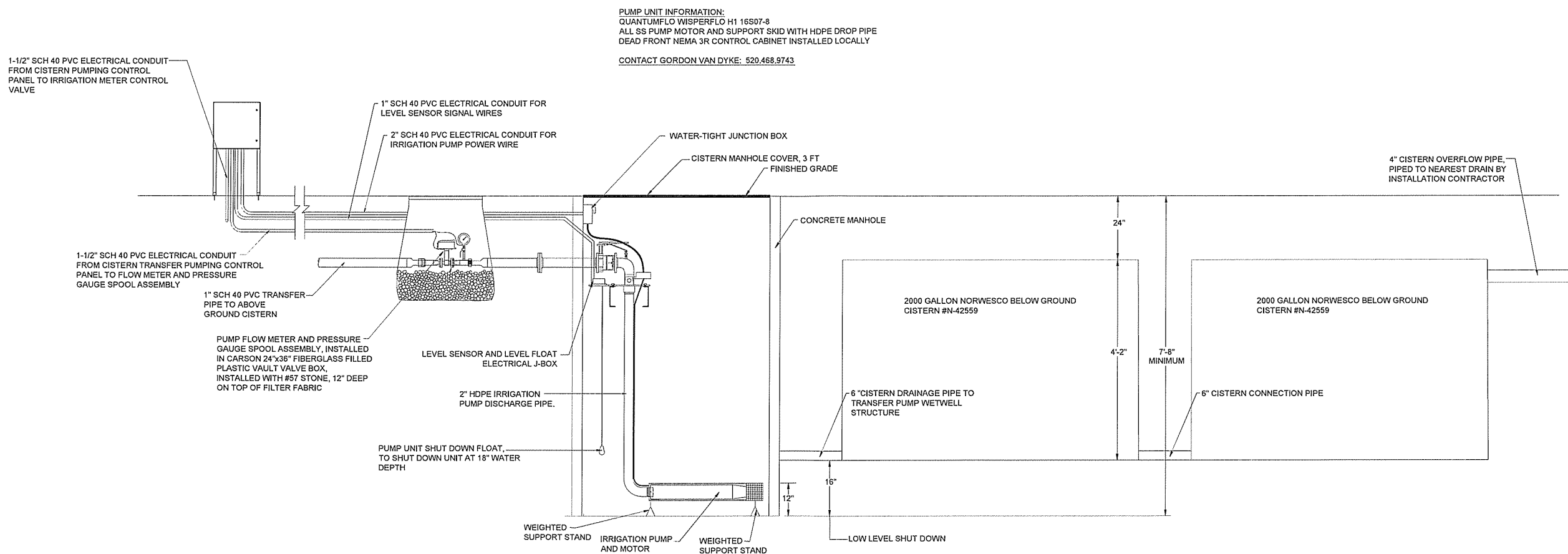
NO.	DATE	DESCRIPTION

Sheet Title:  
 Irrigation Water Harvesting Details

Sheet No:  
 104

**CISTERN PUMPING UNIT (ABOVE GROUND)**

NOTE:  
 DETAILS ARE NOT DRAWN TO SCALE AND ARE DIAGRAMMATIC FOR READABILITY  
 PURPOSES.



**PUMP UNIT INFORMATION:**  
 QUANTUMFLO WISPERFLO H1 16S07-8  
 ALL SS PUMP MOTOR AND SUPPORT SKID WITH HDPE DROP PIPE  
 DEAD FRONT NEMA 3R CONTROL CABINET INSTALLED LOCALLY  
 CONTACT GORDON VAN DYKE: 520.468.9743

**S CISTERN TRANSFER PUMPING UNIT**  
 NTS



Seal:  
 Date: 11.26.14  
 Project No: 2014-011  
 Drawn By: ICS  
 Checked By: MK

**Ware-Lyndon House Front Landscape**  
 Athens, Georgia  
 Athens-Clarke County Unified Government  
 293 Hoyt Street  
 Athens, GA 30606  
 phone: 706-613-3623  
 fax:

Revisions:

NO.	DATE	DESCRIPTION

Sheet Title:  
**Irrigation  
 Water  
 Harvesting  
 Details**

Sheet No:  
**105**

**LEGEND**

- UNDERGROUND CONDUIT.
- ☒ PANELBOARD.
- TFROC TYPICAL FOR REMAINDER OF CIRCUIT.

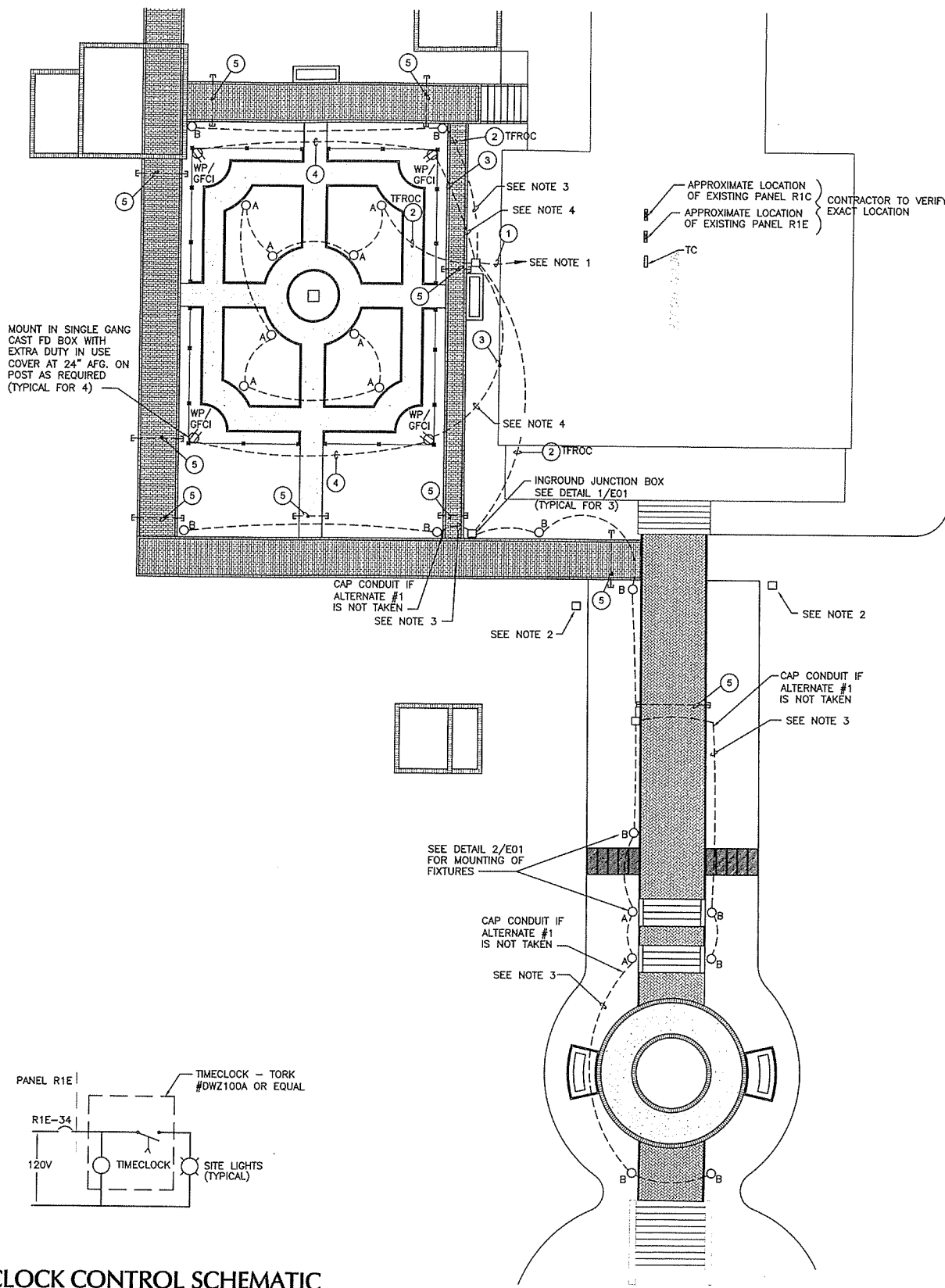
**LIGHTING FIXTURE SCHEDULE**

**BASE BID**

TYPE MANUFACTURER & CATALOG NUMBER	MOUNTING	NO./LAMPS	LOAD
A KIM LIGHTING #EL195-3L3K-UV-DB-H80DB-JBR-3	20" STEM	3/LED	5W

**ALTERNATE BID #1**

TYPE MANUFACTURER & CATALOG NUMBER	MOUNTING	NO./LAMPS	LOAD
B KIM LIGHTING #EL195-3L3K-UV-DB-H80DB-JBR-3	20" STEM	3/LED	5W



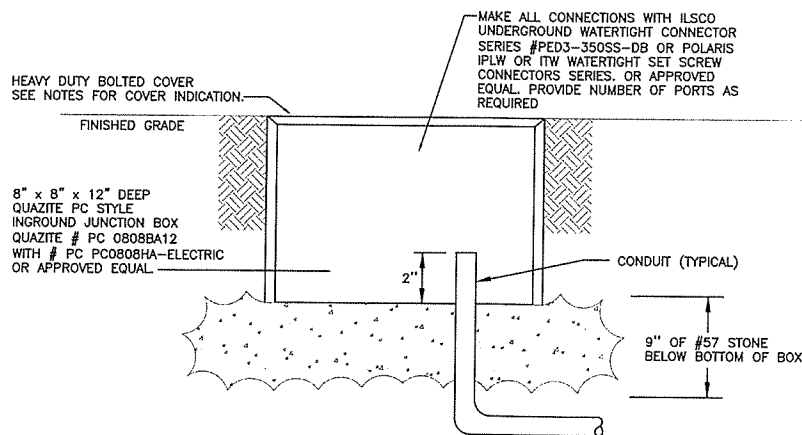
**NOTES**

- CONTRACTOR TO RUN HOMERUN INTO THE EXISTING HOUSE, IN THE CRAWL SPACE UNDER THE FIRST FLOOR AND TURN UP THE ELECTRICAL CLOSET WITH EXISTING PANELS R1C AND R1E. TERMINATE THE OUTLET CIRCUITS IN PANEL R1E, UNDER SPARE 20A/1POLE CIRCUIT BREAKER, CIRCUITS R1E-26,28,30,32. TERMINATE THE LIGHTING CIRCUIT UNDER SPARE 20A/1POLE CIRCUIT BREAKER R1E-34 VIA NEW TIMECLOCK. LOCATE NEW TIMECLOCK BESIDES EXISTING PANEL R1E. NOTE ADDITIONS TO THE PANELBOARD SCHEDULE.
- CONTRACTOR SHALL REMOVE THE EXISTING GROUND MOUNTED FLOOD LIGHT FIXTURE, CAGE AND CONCRETE FOUNDATIONS. CUT THE CONDUITS/CONDUCTOR TO BELOW GRADE AND ABANDON. REMOVE THE CONDUCTORS FROM THE PANEL FEEDING THESE FIXTURES AND MARK AS SPARE IN THE PANEL SCHEDULE. REMOVE THE CONDUCTORS/CONDUIT FROM THE PANEL AND ABANDON BELOW THE FLOOR. SEAL THE PENETRATION IN THE FLOOR WITH WOOD TO PREVENT RODENTS FROM ENTERING THE ROOM FROM THE CRAWL SPACE AS REQUIRED.
- THE CONTRACTOR SHALL PROVIDE AN ADDITIVE COST FOR ALTERNATE #1 WHICH WILL INCLUDE THE TOTAL COST FOR INSTALLATION OF ALL TYPE B FIXTURES INCLUDING COMPLETE COST FOR THE WIRING AND CONDUIT INSTALLATION AND COMPLETE COST FOR THE FIXTURES TYPE B WITH INSTALLATION. IF ALTERNATE #1 IS NOT TAKEN, REFER TO THE DOCUMENTS AS TO WHERE THE EMPTY CONDUITS WILL BE INSTALLED AND CAPPED FOR THE FUTURE.
- THE CONTRACTOR SHALL PROVIDE AN ADDITIVE COST FOR THE INSTALLATION ON ALTERNATE #2 WHICH WILL INCLUDE THE TOTAL COST OF THE FOUR 120V GFCI OUTLETS AND WIRING FROM THE INGROUND JUNCTION BOX TO THE FOUR OUTLET LOCATIONS. COST TO BE COMPLETE FOR WIRING (CONDUCTORS/CONDUITS) AND THE OUTLETS/OUTLET BOXES AND COVERS. IF ALTERNATE #2 IS NOT TAKEN BY THE OWNER, THE CONTRACTOR SHALL STUB OUT OF THE INGROUND JUNCTION BOX WITH 2 - 3/4" EMPTY CONDUITS (CAP CONDUITS) TO APPROXIMATELY 3 LF OFF THE EDGE OF THE BOX FOR FUTURE EXTENSIONS OF THE POWER OUTLET CIRCUITRY.

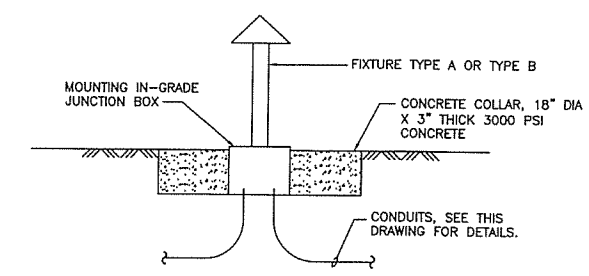
**WIRING SCHEDULE**

- ① 10#8 + 1#8G IN 1 1/4" C.
- ② 2#12 + 1#12G IN 3/4" C.
- ③ 4#8 + 1#8G IN 3/4" C.
- ④ 2#8 + 1#8G IN 3/4" C.
- ⑤ 2" EMPTY CONDUITS CAP BOTH ENDS (REMOVABLE) RUN 2' OFF EDGE OF SIDEWALK.

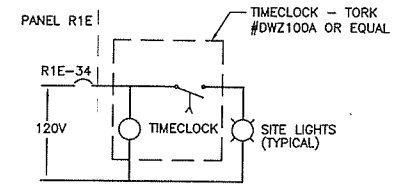
ALL CONDUCTORS ARE TO BE COPPER



**1 IN GROUND JUNCTION BOX DETAIL**  
SCALE: NTS

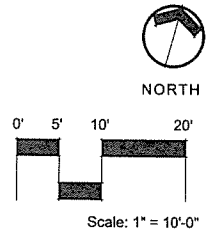


**2 FIXTURE TYPE A & B MOUNTING DETAIL**  
SCALE: NTS



**3 TIMECLOCK CONTROL SCHEMATIC**  
SCALE: NTS

**4 ELECTRICAL PLAN**  
SCALE: 1" = 10'-0"



W&A PROJECT NUMBER -14080

2300 Lake Park Dr, Suite 250  
Smyrna, Georgia 30080  
Voice 770-458-3005 Fax 770-458-8388  
PLOT SCALE: 1" = 1'

Root design studio  
landscape architecture  
404-895-2253

Seal:

Date: 01-05-2015  
Project No: 2014-011  
Drawn By: AP/CP  
Checked By: WPM

**Ware-Lyndon House Front Landscape**  
Athens, Georgia  
Athens-Clarke County Unified Government  
293 Hoyt Street  
Athens, GA 30606

phone: 706-613-3623

Revisions:

NO.	DATE	DESCRIPTION

Sheet Title:  
**ELECTRICAL PLAN**

Sheet No:  
**E 01**