

THE GUILDED PAGE

The Museum Guild of the National Czech & Slovak Museum & Library

PRESIDENT'S MESSAGE



Dear Museum Guild Members:

I want to begin by thanking you for your show of confidence in me by re-electing me as your President for the 2001 calendar year. The elected people I will be working with on the Executive Board and the members who have volunteered to be chairpersons of the different committees are hard working and dedicated to the Guild of The National Czech & Slovak Museum & Library. I am expecting this coming year to be as successful as last year.

I have good news regarding the location of our monthly meetings. I have contacted Hamilton Business College and they have confirmed that we can meet at their location for the months of January, February, March and April. The Museum is working with us to provide their location for the remainder of the year.



WINTER 2001

As soon as the new Executive Board has met to establish the budget and set our goals for 2001, we will present them to you at our first meeting in January.

Please do not forget about volunteering at the Museum. Patty Hikiji needs your help.

If you have any questions or suggestions please let me know. I am always open to suggestions.

I am looking forward to this coming year and continuing to serve you as your President.

Sincerely,

Gary F. Dvorak, President

A Tribute to Madeleine Albright

Our Museum Representative reflects on a very special event . . .

Czech President Vaclav Havel presented U.S. Secretary of State Madeleine Albright with the American Friends of the Czech Republic Civil Society Vision Award last September at New York City's Plaza Hotel. Havel noted that Albright has probably become the most influential Czech woman in history to date by her contributions "to the advancement of respect for human rights, of a democratic political order, of civil society, and of coverage on the part of the democratic world to combat the evil

of totalitarianism." On accepting the award, Albright said of Havel, "No one has contributed more to the spread of freedom and we are grateful and proud to be counted as Czechs." She also added that she was proud to sign final documents that brought the three new member nations into NATO.

Master of Ceremonies was Tom Brokaw who recalled growing up in North Dakota where he enjoyed Czech festivals. He also described his coverage of the closing days of the Velvet Revolution in Prague. A video

presentation, "The Enduring Spirit—The Czech American Experience," paid tribute to Czech immigrants who made new lives and contributions to American and international society, and featured Czech composer Anton Dvorak, Chicago Bears coach Halas and McDonald's founder Ray Kroc as well as astronauts Cernan and Lovell. The video covered many athletes and other notable Czechs as well.

In conclusion, the evening was a "Star-Spangled Banner Night," one I will never forget. — *Sylvia Rohlena*

Inside the Winter Issue . . .

- | | | | |
|---|-------------------------------------|---|----------------------------------------|
| 2 | Guild Dues Alert | 5 | Cookie Walk: How Sweet It Is! |
| 3 | OCT, NOV & DEC 2000 Meeting Minutes | 6 | Membership Campaign a Big Success |
| | | 6 | Y2K Proves Highly Productive For Guild |
| | | 7 | The Top Ten For 2000 |
| | | 8 | Upcoming Meetings & Programs |

THE GUILDED PAGE STAFF: *Cynthia Tucker Shaffer, Editor* ■ *Marilyn Shima Tucker, Associate Editor*

WELCOME OUR NEWEST MEMBER!

Maria Shebetka

CHANGES OF ADDRESS

Dorothy V. Conner

Sue and Gary Novak

MEMBERS:
PLEASE MAKE A NOTE OF THESE
ADDITIONS AND CHANGES IN
YOUR RED YEARBOOK.

**The Novaks may be reached
at Sue's work number:*

Have You Forgotten to Renew?

In the midst of all the excitement of the holidays, it may have slipped your mind that it is now time to pay your Museum Guild membership dues for the year 2001.

Annual dues are \$10.00 and may be mailed to the Museum Guild treasurer:

Leo Modracek

Scheduled Museum Guild Programs

February 3, 2001: 9:30 AM ■ Hamilton Business College
"Memories" presented by Nancy Colbert
Hosts: Betty Tuedsell, Dorothy Conner and Sylvia Rohlena

March 10, 2001: 9:30 AM ■ Hamilton Business College
"The Gardener's Year" presented by Lenora Watson
Hosts: TBA

*The remainder of this year's programming details
will be published in the spring issue of The Guilded Page.*

TAKE NOTE!

The program for the April 7 Guild meeting will be
"**Members Share Treasures of Their Heritage.**"

Anyone wishing to participate is urged to call
Alicia Jackson at:

OUR MISSION STATEMENT . . .

The mission of the Museum Guild of the National Czech & Slovak Museum & Library is to support the activities, programs and facilities of the National Czech & Slovak Museum & Library by providing unpaid volunteers, and other financial and charitable support, and to serve as an educational, service and social organization for persons interested in the National Czech & Slovak Museum & Library.

2001 MUSEUM GUILD OFFICERS

President	Gary F. Dvorak
Vice President	Dorothy Conner
Treasurer	Leo Modracek
Recording Secretary	Andrea Siebenmann
Corresp. Secretary	Leni Stastny
Museum Guild Rep.	Sylvia Rohlena
Ex-Officio	Sylvia Rohlena

2001 COMMITTEE CHAIRS

Education	Bob Stone
Fund Raising	- - - - -
History & Property	Barb Pulkrab
Membership	Milly Ortner
Program	Fern Fackler
Publications	Cynthia T. Shaffer
Public Relations	- - - - -
Social	Irma Kelly

The Fund Raising and Public Relations committees still need chairpersons.

2001 MUSEUM GUILD MEETING DATES

- Saturday, FEBRUARY 3
- Saturday, MARCH 10
- Saturday, APRIL 7
- Saturday, MAY 5
- Monday, JUNE 11
- Monday, JULY 9
- Monday, AUGUST 13
- Saturday, SEPTEMBER 1
- Saturday, OCTOBER 6
- Saturday, NOVEMBER 3
- Saturday, DECEMBER 8

Summer meetings are scheduled for Monday evenings and begin at 6:30 p.m.

MEETING MINUTES OCTOBER 7, 2000

The meeting was called to order by President Gary F. Dvorak who welcomed all. The Pledge of Allegiance to the Flag was led by Zula Oujiri.

CZECH WORD OF THE DAY — "CESTOVANI": Traveling

(Zula Oujiri gave the Czech word of the Day in the absence of Milly Ortner.)

The calendar for next year was discussed. A copy was to be prepared by President Dvorak and sent to Mike Papich who is in charge of printing a master calendar of Czech organizations for 2001. This is a project sponsored by the Federation of Czech Groups.

TREASURER'S REPORT — Rose Kopecky

A balance of \$3,872.55 as of September 30, 2000 was reported. A deposit of \$20.00 for dues was made. Disbursements included: \$25.00 for the St. John's Church tour; \$4.95 for supplies to Sylvia Rohlena; \$10.00 for the speaker for September's program; \$20.00 to the NCSML Endowment Fund in memory of Helene Kane and Dolores Travnicek.

MEMBERSHIP UPDATE

It was reported that we now have 114 paid members.

MUSEUM PROGRAMS & VOLUNTEER COORDINATOR — Patricia Hikiji

Patty Hikiji's report will be given in November. She did ask for items for the November Volunteer Dinner and auction. Upcoming events were announced: Dumping making presented by Ed Nejdrl on October 18; Cookbooks are now available for dumping recipes; the Cookie Walk is scheduled for December 10. Irma Kelly asked for help to sell the cookies and candy. Each member was asked to donate 4 to 5 dozen cookies.

OLD BUSINESS

- New name tags are being made by Cynthia Tucker Shaffer.

NEW BUSINESS

- A motion was made by Sylvia Rohlena to give a gift of \$25.00 to Cynthia Tucker Shaffer in appreciation for publishing the Guided Page. The motion carried.
- A nominating committee of Fern Fackler, Sylvia Rohlena and Frank Novotny was appointed to present a slate of candidates for the year 2001 officers.
- The size of the print in the Guided Page was discussed. Some revisions will be made to address the present small print.

The next meeting will be held November 4 at Hamilton Business College with Marge Nejdrl, Marge Pace and Irene Hamous as hostesses.

The meeting was adjourned.

— Respectfully submitted by
Zula Oujiri

MEETING MINUTES NOVEMBER 4, 2000

The meeting was called to order by President Gary F. Dvorak followed by the Pledge of Allegiance, led by Zula Oujiri. Members were invited to partake of the refreshments provided by Marj Nejdrl, Irene Hamous and Marjorie Pace.

PROGRAM PRESENTATION

Rose Kopecky gave a very informative report on the history of St. Wenceslaus Church and some of the early history of the surrounding area.

MUSEUM PROGRAMS & VOLUNTEER COORDINATOR — Patricia Hikiji

Patty Hikiji reported that during the month of October 45 volunteers recorded hours. The top ten volunteers were: Dolores Usher, Lillian Kopecky, Irma Modracek, Irma Rozek, Marj Nejdrl, Shirley Alexander, Helen Christophersen, Laverne Fisher, Rose Kopecky, Alice Kadlec, Lydia Elias and Betty Petrzalek. There were 45 memberships sold from May to October 2000. Guild members participating in the campaign were 23 in number. Multiple memberships were sold by Helene Kane, Milly Ortner, Patty Hikiji, Irma Rozek, Gary Dvorak, Lillian Kopecky, Leni Stastny and Inez Popelka. Patty made available to each

member a list of events taking place at the Museum for November and December.

A special guest at the meeting, John Kuba from Texas, was welcomed. The birthday of Lavanda Woosley was acknowledged.

CZECH WORD OF THE DAY — Milly Ortner

"KRASNE LISTY": Beautiful leaves

SECRETARY'S REPORT — Sister Christine Elias

Sister Christine read the minutes of the last meeting. Inez Popelka made the motion to accept the minutes as read. The motion carried.

CORRESPONDING SECRETARY'S REPORT — Leni Stastny

Leni Stastny reported on correspondence for September and October. A thank you was received from the organization that sponsored the Nova Ceska Pisen Choir for the gift of \$250.00 sent by the Guild. A thank you note from the NCSML was received for the memorials given in memory of Helene Kane and Dolores Travnicek. Thank you notes were sent to Byrdena Ulrich for conducting the tour of the murals at St. John's Church in Mt. Vernon and to Ann Gesme for her presentation on Norwegian culture.

TREASURER'S REPORT — Rose Kopecky

There is a balance of \$3652.81 as of October 31, 2000. A deposit of \$20.00 for membership dues and disbursements of \$169.74 for newsletter expenses and \$70.00 for two tickets to the Museum dinner was noted.

[It was explained by Zula Oujiri that two years ago it was voted to give the president of the Guild and a guest tickets for the annual Museum dinner. This policy will be followed each year.]

MUSEUM REPRESENTATIVE — Sylvia Rohlena

Sylvia Rohlena reported on two new staff members at the Museum. Jan Stoffer Tursi is Program Coordinator and Lori Robinson is the new Development and Communication Director.

The facilities at Hamilton Business College will no longer be available for our meetings. Sylvia Rohlena, as our liaison with

the Museum board, will request the use of a room for our monthly meetings.

COMMITTEE REPORTS

Membership: Milly Ortner

Milly Ortner handed out change of addresses for the Guild membership list. There are now 115 members.

Fund Raising:

The December 9 Cookie Walk was discussed. Frank Novotny gave an itemized report on the total of \$668.35 realized in 1999. Beula Dvorak prepared a sheet of instructions and information to all present about this project.

Publications: Cynthia Tucker Shaffer

Marilyn Tucker relayed Cynthia Tucker Shaffer's thanks to Zula Oujiri and Betty Truesdell for articles written for the Guided Page. The next mailing will be December 27. Any information or article sent to Cynthia should be sent by E-mail to expedite the editing process. New name tags will be ready for the December meeting.

Social: Irma Kelly

It was announced that the December refreshment committee will be the present officers. The January hostesses will be Irma Modracek, Irma Rigel and Betty Petrzalek.

History and Property: Barb Pulkrab

Barb Pulkrab is asking for someone else to take over the work of this committee.

ELECTION OF OFFICERS

Sylvia Rohlena announced the slate for the 2001 officers of the Guild:

- President - Gary Dvorak
- Vice President - Dorothy Conner
- Rec. Secretary - Andrea Siebenmann
- Cor. Secretary - Leni Stastny
- Treasurer - Leo Modracek

Marilyn Tucker moved to accept the slate as presented. The motion carried.

OLD BUSINESS

- The Penfield Press needs more kolach recipes and would also like some stories about kolaches.

Irma Kelly won the fall motif egg decorated and donated by Marj Nejd.

A motion was made to adjourn by Marilyn Tucker. The motion carried.

— Respectfully submitted by
Sister Christine Elias

A sincere thank you to all the Guild members who baked Christmas cookies to be given out as treats for Svaty Mikulas. Your generosity is deeply appreciated.

— Patty Hikiji

MEETING MINUTES DECEMBER 9, 2000

The meeting was called to order by President Gary F. Dvorak. Vice President Zula Oujiri led the Pledge of Allegiance to the Flag.

CZECH WORD OF THE DAY —

Milly Ortner

“DAREK”: Gift or present

SECRETARY'S REPORT —

Sister Christine Elias

The minutes from the last meeting were read. A motion to accept the minutes was made by Betty Truesdell. The motion carried.

Additions to the previous report on multiple memberships: Multiple memberships were also sold by Rose Kopecky and Betty Truesdell.

CORRESPONDING SECRETARY'S REPORT — Leni Stastny

There was no outgoing correspondence in the month of November. Leni Stastny reported that the Guild received a thank you note from Cynthia Shaffer. This was commented on by Marilyn Tucker who explained that Cynthia thanked for the gift she had received from the Guild as an appreciation for her work. The gift was a porcelain cup and Cynthia liked it very much.

- Irma Kelly briefly visited the meeting encouraging those who were volunteering at the Cookie Walk to arrive at their assigned times at 10.00 a.m. and then at 1.00 p.m.
- Shirley Rosencrans, The Museum Gift Store manager, had a brief announcement about the upcoming trip to Chicago for the opera “Good Soldier Svejk.” Shirley reminded those who were interested that the cost of the trip was \$80.00 per person. She also passed around a sheet with detailed information on the trip and reminded members about the deadline for sign up, December 10, 2000.

MUSEUM PROGRAMS & VOLUNTEER COORDINATOR — Patricia Hikiji

Patty Hikiji informed members about the top ten volunteers for the month of November and the upcoming events in

A Day of Scandinavian Culture

On October 7 members of the Guild had the opportunity to experience Scandinavian culture during a fun-filled bus trip to the Vesterheim Museum at Decorah, Iowa. The tour was an excellent compliment and follow up to the lecture given by Ann Gesme at the September meeting.

The museum has three floors and a basement level in which many artifacts have been accumulated. The tours are self-guided, so we were able to view at our own pace. The museum's beautiful gift shop stocks many unique items including jewelry, sweaters, glassware and nisse, to name a few.

Food was available at several areas, giving us the opportunity to sample a variety of Scandinavian dishes.

Our bus driver, Tom Krejci, took us on a short tour of Decorah, which proved to be a very interesting town.

Our tour guide, Guild member Lavanda Woosley, kept us updated with interesting facts about the area through which we traveled. The day proved to be educational as well as enjoyable!

— Zula Oujiri



December and January (detailed description in Education Committee Report).

TREASURER'S REPORT —

Rose Kopecky

Rose Kopecky reported that the Guild's balance at Firststar Bank as of October 31, 2000 was \$3,652.81. Deposits for membership dues were made in total amount of \$60.00, proceeds from Dumpling Cookbook sales were \$16.00, and from the NCSML Cookbook sale it was \$240.00. The amount of disbursements was \$218.00, consisting of payments for the Guild Christmas ornaments (\$192.00) and for the gift to Cynthia Shaffer (\$26.40). The ending balance as of November 30, 2000 totaled \$3,750.41.

MUSEUM REPRESENTATIVE —

Sylvia Rohlena

At the last Museum Board meeting Sylvia Rohlena reported on the Guild membership status. She mentioned that the Board was pleased with the Guild's work and appreciated the efforts of its members. Sylvia asked the Board for assistance in resolving the Guild meeting room issue. The Board agreed to have the Guild meetings at the Museum and the dates were already on their calendar.

President Dvorak complemented Sylvia's information in that the Guild meetings from January through April 2001 will be held at Hamilton Business College and the rest of year the meetings will be at the Museum. Gary thanked Sylvia for her work on this issue.

COMMITTEE REPORTS

Membership: Milly Ortner

Milly Ortner reported that current membership was 115, out of whom 21 had paid their dues for year 2001. Milly thanked her committee for calling other members to remind them about bringing cookies for the Cookie Walk.

Program:

Zula Oujiri thanked her daughter Virginia for her help with the Cookie Walk. Next month the Guild will meet on January 6 at 9.30 a.m. at the History Center in downtown Cedar Rapids. A coffee pot will be available; the Guild needs to bring cups and cookies. Rental cost for the meeting room is \$25.00. If participants are interested in seeing the gallery after the meeting, they will be charged a special group rate of \$3.00 per person, but the Center needs to be notified

ahead about the number of interested visitors.

Publications: Cynthia Tucker Shaffer

Marilyn Tucker informed about new name tags for all members. She forwarded a greeting from Cynthia who wished the Guild members Merry Christmas, and that she enjoyed the task because she could be thinking about everyone while making the name tags. There should be 100 name tags made, but additional are being ordered. Marilyn asked that members let her or Cynthia know about any changes or corrections to their names if necessary.

In regards to the next issue of the Guilded Page, instead of in December it will be published in January.

Education: Bob Stone

Bob Stone presented several education opportunities in the month of January. The Sunday lecture will be about roots in the Czech or Slovak Republics, given by the founder of the Minnesota Genealogical Society. On January 17 - Learning Language after 50; January 28 - Lifelong Learning Series will be about the experience at the International A. Dvorak Competition in Karlovy Vary in the Czech Republic.

Also, Bob asked to mark calendars for March 26 when Czech Chamber Music Ensemble will perform at Coe College at 7 p.m. He wasn't sure if a fee would be charged to those attending.

He suggested to reserving Friday and Saturday March 2 and 3, 2001 when the Conference on Czech and Slovak History will take place at the Museum. It is expected to

be an outstanding event visited by scholars from both countries, Czech and Slovak Ambassadors to the U.S. and scholars from other countries as well.

Bob mentioned that Czech TV news airs on "Scola" on Channel 17 at 11.00 a.m. on Saturdays, and at 4.30 a.m. Mondays through Fridays. Even though some people may not completely understand the commentary, the program could serve as a practice for correct pronunciation and as a visual stimulus for those who would like to keep up their Czech or learn it anew.

OLD BUSINESS

(Already discussed during the report by Sylvia Rohlena.)

- On this occasion, Gary Dvorak announced that all committee chairs had been appointed. He noted that for the Guild it was a good year, and thanked all members for their hard work.

OTHER

- It was suggested to the corresponding secretary that a Christmas card be sent to Anne Reif since she couldn't drive and come to the meeting.
- Marilyn Tucker thanked the Guild President, Board and other members for doing a great job this year.

Milly Ortner made a motion for the meeting to adjourn. The motion carried.

— *Respectfully submitted by*
Sister Christine Elias

Cookie Walk a Sweet Success!

The Second Annual Holiday Cookie Walk sponsored by the Czech Museum Guild held December 9, 2000 was a great success. Recently a satisfied customer said to me: "Your Cookie Walk at the Museum was so much fun and the cookies were absolutely great!" Sales in cookies and candy amounted to \$872.50 and craft and cookbook sales were \$66.00, bringing in a grand total of \$938.50 for the event. This represents a significant increase over last year's sales.

Our thanks to each and every Guild member who helped make this Cookie Walk a success, whether you provided cookies or candy, helped set up or clean up or worked a shift during the Cookie Walk. The planning committee for this event included Irma Kelly, Barb Edmunds, Sylvia Rohlena, Frank Novotny and Beula Dvorak. Their organization and leadership is appreciated.

The Third Annual Holiday Cookie Walk is already less than a year away. Mark your calendars for December 8, 2001!

— *Beula Dvorak*

Membership Drive Concludes With Great Success

MEMBERSHIPS SOLD		TOTAL MEMBERSHIPS SOLD MAY - OCTOBER 2000		MULTIPLE SALES		TOP HONORS	
SEPT	TYPE	Individual Memberships	19	Helene Kane	7	HELENE KANE	7 memberships for 75 credit hours
Patricia Hikiji	1 Individual	Family Memberships	23	Milly Ortner	5	MILLY ORTNER	5 memberships for 70 credit hours
Lillian Kopecky	2 Family	Contributing Memberships	2	Patricia Hikiji	5	-----	
Leni Stastny	1 Family	Sustaining Memberships	1	Irma Rozek	3	CONGRATULATIONS TO ALL!	
Milly Ortner	1 Family	TOTAL MEMBERSHIPS	45	Gary F. Dvorak	3		
Sherlee Peterson	1 Sustaining	<i>Guild participation - 23 members</i>		Lillian Kopecky	3		
Marilyn Tucker	1 Family			Leni Stastny	2		
Irma Rozek	1 Contributing			Inez Popelka	2		
OCT	TYPE						
Lillian Kopecky	1 Family						
Rose Kopecky	1 Family						

MUSEUM GUILD YEAR-END SUMMARY

Submitted by Patricia A. Hikiji

NUMBER OF VOLUNTEERS RECORDING HOURS IN 2000 — 82
 NUMBER OF GUILD HOURS RECORDED IN 2000 — 7,687.50

HOURS RECORD

Over 500

Bob Stone 539.00

Over 400

Marge Stone 447.25
 Dolores Usher 409.00

Over 300

Emil Koval 347.50
 Irma Rozek 314.00

Over 200

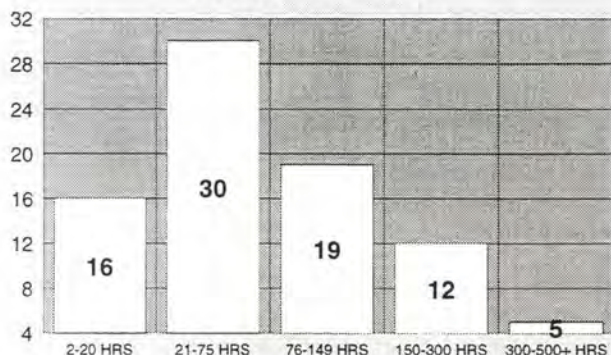
Lillian Kopecky 217.25
 Milly Ortner 206.00

Over 100

Gary F. Dvorak 185.00
 Inez Popelka 179.25
 Irma Modracek 179.00
 Barb Pulkrab 176.50
 Helen Christophersen 175.50
 Marj Nejd 173.25
 Sylvia Rohlena 169.25
 Laverne Fisher 165.00
 Lydia Elias 156.75
 Mana Zlatohlavek 153.50
 Cynthia Tucker Shaffer 149.00
 Robert Rohlena 139.00
 Evelyn Dvorak 131.75
 Rose Kopecky 128.25
 Dorothy Conner 127.00
 Betty Petrzalek 124.50
 Marie Webster 112.75
 Shirley Alexander 107.50
 John Cimburek 106.00
 Leni Stastny 103.50

HOURS OF SERVICE

For the Year 2000



Number of Guild Members

Note: 82 members recorded volunteer hours in 2000

MONTHLY TOTALS FOR 2000

MONTH	HOURS	# OF VOLUNTEERS
JANUARY	296.00	27
FEBRUARY	212.75	27
MARCH	480.75	48
APRIL	565.50	53
MAY	675.75	50
JUNE	527.00	48
JULY	1930.75	57
AUGUST	698.75	47
SEPTEMBER	824.50	52
OCTOBER	429.00	45
NOVEMBER	468.00	50
DECEMBER	578.75	54



PHOTO CREDIT: MARILYN SHIMA TUCKER

LEFT:
A lot to smile about . . . Milly Ortner,
Membership Campaign Award recipient,
at the December Guild meeting.

CAMPAIGN AWARD RECIPIENT

Congratulations to

MILLY ORTNER

100 hours (credited to January 2001)

\$20.00 Gift Certificate from the Museum Gift Shop

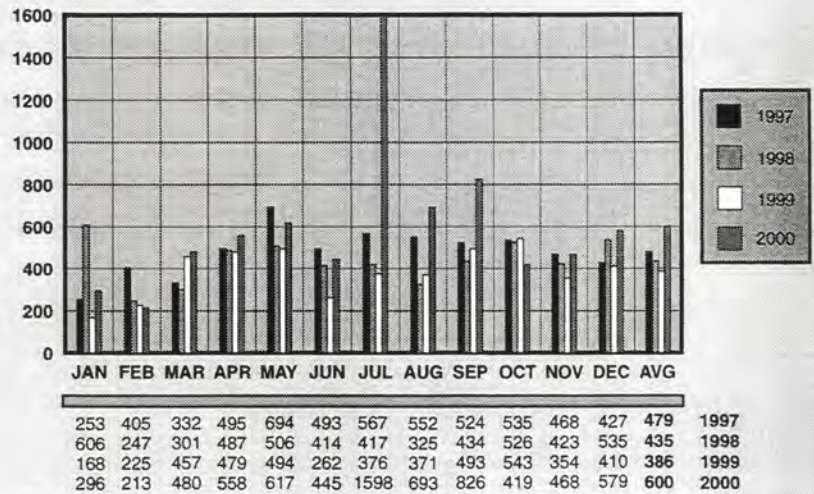
Congratulations to

THE TOP TEN FOR 2000

Bob Stone	539.00
Marge Stone	447.25
Dolores Usher	409.00
Emil Koval	347.50
Irma Rozek	314.00
Lillian Kopecky	217.25
Milly Ortner	206.00
Gary F. Dvorak	185.00
Inez Popelka	179.25
Irma Modracek	179.00

Guild Volunteer Hours

1997, 1998, 1999 & 2000



TOP GUILD VOLUNTEERS FOR SEPTEMBER THROUGH DECEMBER 2000

SEPTEMBER 2000

Number of Guild volunteers recording hours in SEPT: **52**

Number of Guild volunteer hours recorded . . . **825.50**

Lillian Kopecky	56.00
Cynthia T. Shaffer	50.00
Irma Rozek	47.00
Sherlee Peterson	46.50
Marilyn Tucker	35.00
Sylvia Rohlena	34.50
Dolores Usher	33.00
Robert Rohlena	32.00
Milly Ortner	29.00
Lydia Elias	25.25

OCTOBER 2000

Number of Guild volunteers recording hours in OCT: **45**

Number of Guild volunteer hours recorded . . . **419**

Dolores Usher	52.00
Lillian Kopecky	26.00
Irma Modracek	22.00
Irma Rozek	21.75
Marj Nejd	20.25
Shirley Alexander	18.00
Helen Christophersen	18.00
Laverne Fisher	17.50
Rose Kopecky	15.00
Alice Kadlec	10.75
Lydia Elias	10.50
Betty Petrzalek	10.50

NOVEMBER 2000

Number of Guild volunteers recording hours in NOV: **50**

Number of Guild volunteer hours recorded . . . **468**

Marj Nejd	45.00
Dolores Usher	31.50
Mana Zlatohlavek	18.50
Inez Popelka	18.00
Andrea Siebenmann	18.00
Betty Petrzalek	17.50
Barb Pulkrab	17.50
Irma Rozek	16.75
John Cimburek	14.00
Laverne Fisher	14.00
Lillian Kopecky	14.00
Helen Christophersen	13.50
Evelyn Dvorak	12.00
Lydia Elias	12.00
Irma Modracek	11.50

DECEMBER 2000

Number of Guild volunteers recording hours in DEC: **54**

Number of Guild volunteer hours recorded . . . **578.75**

Dolores Usher	47.50
Bob Stone	33.25
Beula Dvorak	28.00
Marj Nejd	25.00
Milly Ortner	25.00
Sr. Virginia Kremlacek	24.00
Gary F. Dvorak	17.50
Marie Webster	17.50
Cynthia T. Shaffer	17.00
Lillian Kopecky	15.50
Betty Petrzalek	15.00
Rose Kopecky	14.50

Thank you to all of our wonderful volunteers for a successful and productive year.

All data for graphs compiled and submitted by Patricia A. Hikiji, Volunteer Coordinator.

THE GUILDED PAGE

Cynthia Tucker Shaffer
Editor



ARISTEIA GRAPHICS



UPCOMING GUILD MEETINGS

We look forward to seeing you all at these wonderful programs!

FEBRUARY 3, 2001

9:30 a.m. at
Hamilton College ▪ 1924 D Street SW

"Memories"

presented by
Nancy Colbert

Meeting hosted by Betty Truesdell, Dorothy Conner and Sylvia Rohlena

MARCH 10, 2001

9:30 a.m. at
Hamilton College ▪ 1924 D Street SW

"The Gardener's Year"

presented by
Lenora Watson
Hosts TBA

APRIL 7, 2001

9:30 a.m. at
Hamilton College ▪ 1924 D Street SW

"Members Share Treasures of Their Heritage"

*Details of this meeting are pending.
Please refer to page 2 for information on how to participate.*

Gothic Architecture At Its Best

At the November 4 Guild meeting Rose Kopecky gave an in-depth presentation of the history of St. Wenceslaus Church. Also included was fascinating information on the early Czech and Slovak emigrants as well as an account of the tragic death of the martyred St. Wenceslaus.

The original church was built in 1874, the rectory was added in 1879 and the present church was constructed in 1910. It is one of the best examples of Gothic architecture and is a national parish. The extraordinary windows are imported Czech and English stained glass. This church was especially important to the Slavic population as it helped them make the difficult adjustment into American society. ☞

— Betty Truesdell

VOLUNTEERS NEEDED

The National Czech & Slovak Museum & Library needs as many volunteers as possible. Please contact anyone you know that might be interested in helping with the work of the Museum and the Guild. Volunteering is most self-fulfilling and self-satisfying, so give yourself and your friends the opportunity to experience the great joy of giving.

Please contact Patty Hikiji today at 362-8500. Give a little of yourself, and get a lot in return!