

# *Dr. Jorge Alvarez High School*

**Mission:** become a national leader in educating urban youth by preparing all our students for the nation's universities, colleges and their chosen profession.

Year Built: 2007

2008-09 Enrollement: 64

Capacity: 603

Utilization Percentage: 95.83%?

Education Adequacy: 62

Also referred to as: Adelaide High School



# Building

## Quick Facts

**Built:** 2007

**Site:** Soil contaminated & industrial pollutants

**Architects:** Edward Rowse

**Sq. Footage:** 82,000

**Accommodation:** 450 students

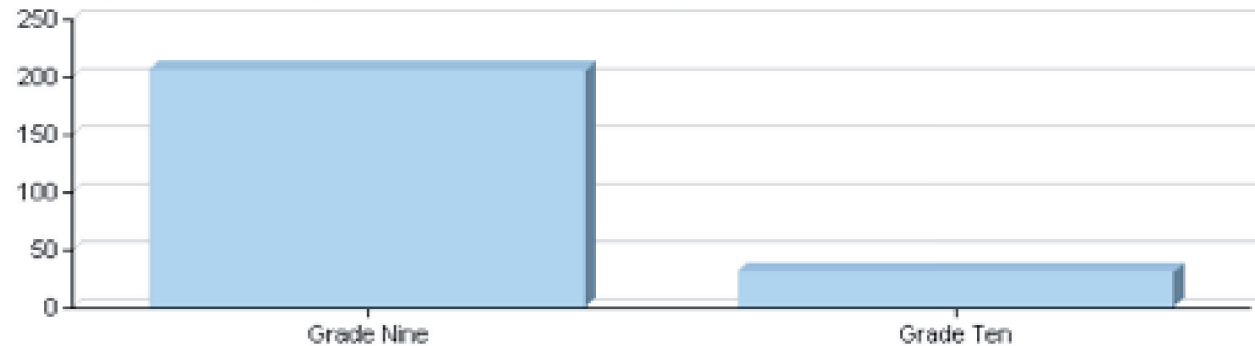
**Cost:** \$14,500,000

## Background

City needed to find a space for 550 high school students immediately. Construction was delayed by court hearings involving Department of Environmental Management approval and by strong opposition from community members. Residents cite traffic, noise, that the entrance is planned for a residential street and contamination as their concerns.

Initially, construction was fast-tracked due to immediate need. Tried to approve construction without DEM approval; it was quickly thwarted when DEM issued a cease-and-desist order until a remediation plan was approved.

Dr Jorge Alvarez High School Enrollment by Grade

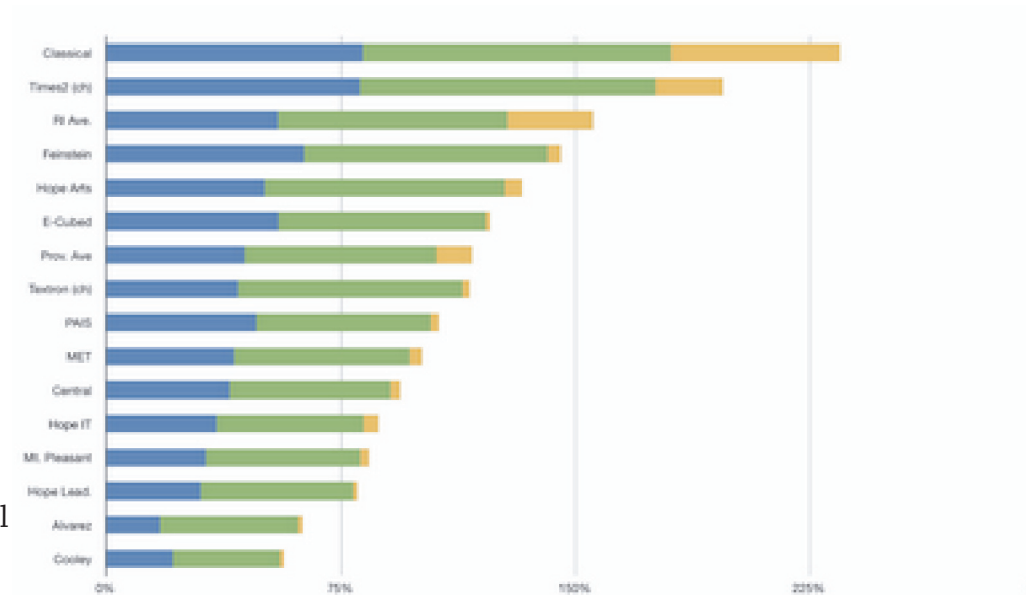


## Senate Bill *June 2011*

Approved and amended to Industrial Property Remediation and Reuse Act.

RI. Senator Juan M. Pichardo sponsored legislation to make it more difficult for contaminated sites to be used for the construction of school buildings.

*Requires* a public hearing when a school is proposed to be built on a former industrial, manufacturing or landfill site.



# Building

- “Here we have a Superfund site and yet, with a wave of a wand, it’s suitable for children” “To think of putting a school here is ludicrous”  
- David Kennedy  
Resident
- “We felt that environmental problems affecting poor people and people of color weren’t getting addressed”  
- Steven Fischbach  
Lawyer for RI Legal Services
- “Having walked the site the day before Thanksgiving, it is blatantly apparent that the water’s edge will be attractive to students looking for a place to hang out”  
Hood’s firm disagreed with any remediation plans that do not include cleaning up the property around Mashapaug Pond.  
- Kevin P. Hood  
Consultant with Environmental Research Institute
- “You’re always going to get some sort of opposition, it’s just a handful of people who live on [Adelaide Avenue]”  
- Alan Sepe  
Director of Department of Public Properties
- “Out back, a tall chainlink fence encloses a huge pile of debris. Off to the side, several acres between the school and Mashapaug Pond are also fenced off and signs warn people to keep out”  
- Peter Lord  
Journal Environment Writer
- “The Adelaide Avenue high school was supposed to open last fall, but continued neighborhood opposition over contamination of the land has repeatedly delayed the start of construction”  
- Linda Borg  
Journal Staff Writer
- “From the moment the Dr. Jorge Alvarez School was built in my district, I expressed concern over its location, since it was constructed on a site that required remediation and continuous monitoring of harmful vapors”  
- RI Senator Juan M. Pichardo
- Adelaide Avenue property had been designated as a Superfund site in 1988, the state-approved plan stipulated that the land should never be used for residential or recreational purposes, or for a school  
- Silvia Aldredge  
Community Member

# Recent News

R.I. targets 7 failing schools for intervention *October 2011*

Alvarez High School required to make substantial reforms

Department of Education *October 2011*

“Under RIDE protocol for interventions in persistently low-achieving schools and in compliance with federal regulations and guidance on school improvement, each of the seven schools must select a model for school reform by late next month [November]”

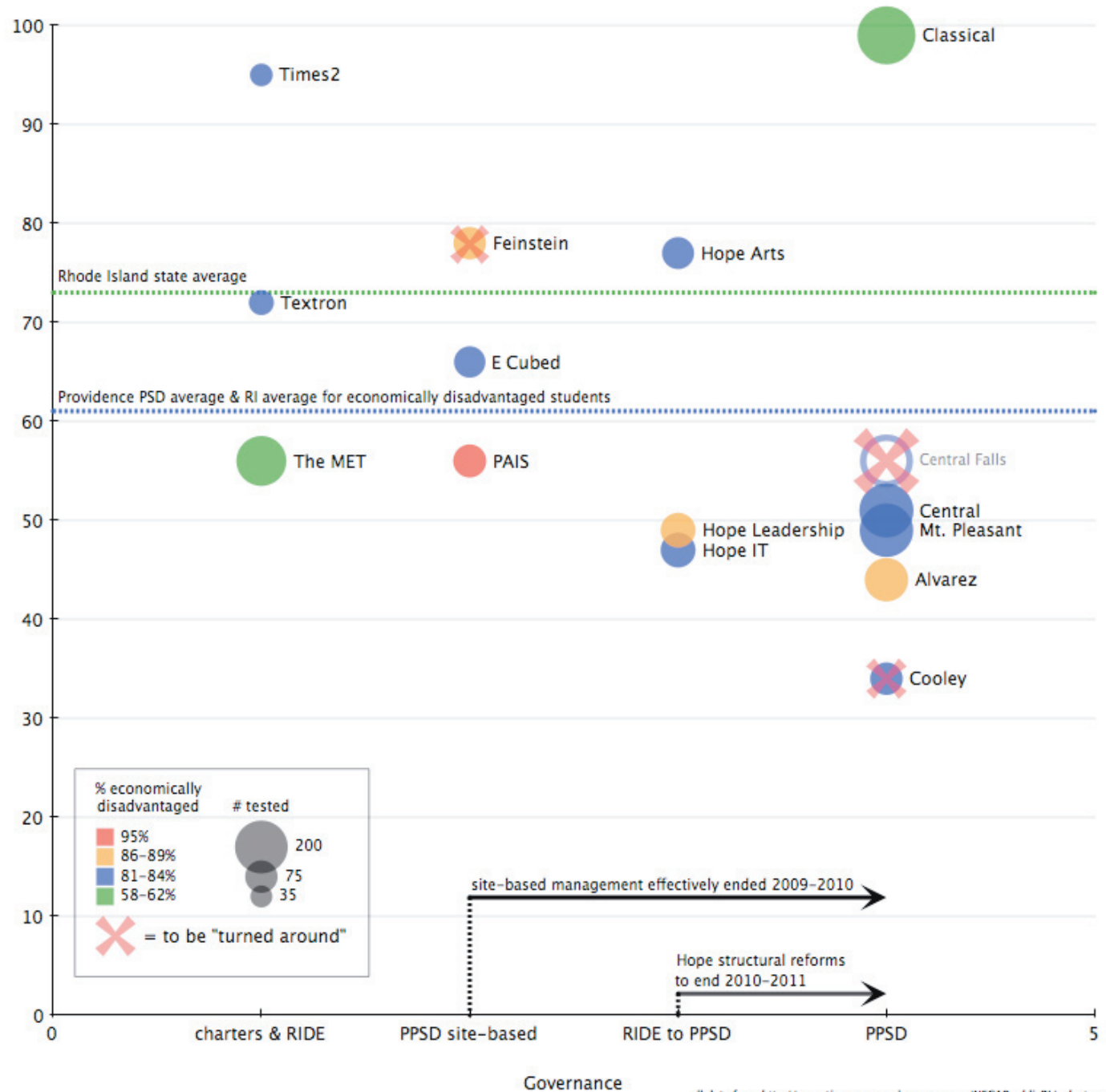
City of Providence *September 2011*

School Department requesting proposals for instructional consultant and coaching services.

Department of Education *July 2011*

Last year, “persistently low-achieving schools” received \$12.5 million from RIDE.

## Reforming and Un-Reforming High Schools In Providence



## Sources

<http://www.ride.ri.gov/commissioner/edpolicy/plas.aspx>

<http://providenceschools.blogspot.com/search/label/Dr.%20Jorge%20Alvarez%20High%20School>

[http://www.projo.com/education/content/INTERVENTION\\_SCHOOLS\\_10-08-11\\_D0QQJM1\\_v15.6e772.html](http://www.projo.com/education/content/INTERVENTION_SCHOOLS_10-08-11_D0QQJM1_v15.6e772.html)

[http://www.foxprovidence.com/dpps/news/local\\_news/region\\_5/providence-7-ri-schools-cited-for-low-achievement\\_3959867](http://www.foxprovidence.com/dpps/news/local_news/region_5/providence-7-ri-schools-cited-for-low-achievement_3959867)

<http://www.providenceschools.org/media/68017/hs%20alvarez.pdf>

<http://www.rilin.state.ri.us/news/pr1.asp?prid=7424>

<http://www.proteun.org/member/inthenews.shtml>

[https://docs.google.com/viewer?a=v&q=cache:nj7T8ZhlydcJ:org.law.rutgers.edu/publications/lawjournal/issues/39\\_3/07WestcoatVol.39.3.r\\_3.pdf+alan+sepe+high+school+providence&hl=en&gl=us&pid=bl&srcid=ADGEESj\\_jmIuSgT2Et98LmAY0CTWQvsRY3jRVNKTjfTtca8nTnO8II\\_cV50FeajGVFc4c-YyRgfyY4lolaZ3qh-T8y2AIf5whxegK73rFb9t9wEFIEs799KzBAKiiut3sfS\\_qHSf-4c&sig=AHIEtbQKfuAmQW\\_xlAlAjygILX0oVcsQ4A](https://docs.google.com/viewer?a=v&q=cache:nj7T8ZhlydcJ:org.law.rutgers.edu/publications/lawjournal/issues/39_3/07WestcoatVol.39.3.r_3.pdf+alan+sepe+high+school+providence&hl=en&gl=us&pid=bl&srcid=ADGEESj_jmIuSgT2Et98LmAY0CTWQvsRY3jRVNKTjfTtca8nTnO8II_cV50FeajGVFc4c-YyRgfyY4lolaZ3qh-T8y2AIf5whxegK73rFb9t9wEFIEs799KzBAKiiut3sfS_qHSf-4c&sig=AHIEtbQKfuAmQW_xlAlAjygILX0oVcsQ4A)

[https://docs.google.com/viewer?a=v&q=cache:BQWToW9GCPoJ:envstudies.brown.edu/theses/MollyTsongasthesis.pdf+alan+sepe+high+school+providence&hl=en&gl=us&pid=bl&srcid=ADGEESjquo0TCROclSJIX\\_gxcnbaHWr5wlE\\_xkYkfLBNKUFUGGJDrZNPEhaOEdklAPXOJU7Z6MMcvEHC Pic2LD6C3I6q3KqPNtL8LSm-5SOcuSMiwt-TSjTx3Fsd7tpxfzyKSCEXU1wO&sig=AHIEtbQ9Kdug7pFZZ4rEu96eeg6rn\\_hBaAhttp://www.tuttlesvc.org/2010\\_02\\_01\\_archive.html](https://docs.google.com/viewer?a=v&q=cache:BQWToW9GCPoJ:envstudies.brown.edu/theses/MollyTsongasthesis.pdf+alan+sepe+high+school+providence&hl=en&gl=us&pid=bl&srcid=ADGEESjquo0TCROclSJIX_gxcnbaHWr5wlE_xkYkfLBNKUFUGGJDrZNPEhaOEdklAPXOJU7Z6MMcvEHC Pic2LD6C3I6q3KqPNtL8LSm-5SOcuSMiwt-TSjTx3Fsd7tpxfzyKSCEXU1wO&sig=AHIEtbQ9Kdug7pFZZ4rEu96eeg6rn_hBaAhttp://www.tuttlesvc.org/2010_02_01_archive.html)

[https://docs.google.com/viewer?a=v&q=cache:BQWToW9GCPoJ:envstudies.brown.edu/theses/MollyTsongasthesis.pdf+alan+sepe+high+school+providence&hl=en&gl=us&pid=bl&srcid=ADGEESjquo0TCROclSJIX\\_gxcnbaHWr5wlE\\_xkYkfLBNKUFUGGJDrZNPEhaOEdklAPXOJU7Z6MMcvEHC Pic2LD6C3I6q3KqPNtL8LSm-5SOcuSMiwt-TSjTx3Fsd7tpxfzyKSCEXU1wO&sig=AHIEtbQ9Kdug7pFZZ4rEu96eeg6rn\\_hBaAhttp://www.tuttlesvc.org/2010\\_02\\_01\\_archive.html](https://docs.google.com/viewer?a=v&q=cache:BQWToW9GCPoJ:envstudies.brown.edu/theses/MollyTsongasthesis.pdf+alan+sepe+high+school+providence&hl=en&gl=us&pid=bl&srcid=ADGEESjquo0TCROclSJIX_gxcnbaHWr5wlE_xkYkfLBNKUFUGGJDrZNPEhaOEdklAPXOJU7Z6MMcvEHC Pic2LD6C3I6q3KqPNtL8LSm-5SOcuSMiwt-TSjTx3Fsd7tpxfzyKSCEXU1wO&sig=AHIEtbQ9Kdug7pFZZ4rEu96eeg6rn_hBaAhttp://www.tuttlesvc.org/2010_02_01_archive.html)

[https://docs.google.com/viewer?a=v&q=cache:BQWToW9GCPoJ:envstudies.brown.edu/theses/MollyTsongasthesis.pdf+alan+sepe+high+school+providence&hl=en&gl=us&pid=bl&srcid=ADGEESjquo0TCROclSJIX\\_gxcnbaHWr5wlE\\_xkYkfLBNKUFUGGJDrZNPEhaOEdklAPXOJU7Z6MMcvEHC Pic2LD6C3I6q3KqPNtL8LSm-5SOcuSMiwt-TSjTx3Fsd7tpxfzyKSCEXU1wO&sig=AHIEtbQ9Kdug7pFZZ4rEu96eeg6rn\\_hBaAhttp://www.tuttlesvc.org/2010\\_02\\_01\\_archive.html](https://docs.google.com/viewer?a=v&q=cache:BQWToW9GCPoJ:envstudies.brown.edu/theses/MollyTsongasthesis.pdf+alan+sepe+high+school+providence&hl=en&gl=us&pid=bl&srcid=ADGEESjquo0TCROclSJIX_gxcnbaHWr5wlE_xkYkfLBNKUFUGGJDrZNPEhaOEdklAPXOJU7Z6MMcvEHC Pic2LD6C3I6q3KqPNtL8LSm-5SOcuSMiwt-TSjTx3Fsd7tpxfzyKSCEXU1wO&sig=AHIEtbQ9Kdug7pFZZ4rEu96eeg6rn_hBaAhttp://www.tuttlesvc.org/2010_02_01_archive.html)