



Volume 21, Number 3  
Fall 1997

# The Philanderian

Alumni News of Philander Smith College • Little Rock, Arkansas

## Clinton and Little Rock Nine Visit PSC for Candlelight Vigil

During the 40th anniversary commemoration of the Central High School integration crisis in Little Rock, Philander Smith College was the setting for a candlelight vigil and reception Sept. 27.

Among those on the program were President Bill Clinton, first lady Hillary Rodham Clinton, The Little Rock Nine, Dr. Myer L. Titus, Student Government Association President Tanka Mitchell, and the PSC Collegiate Choir. PSC alumni, trustees, faculty, staff, students, and a crowd of about 1,000 also were present.

Terrence Roberts, one of the Little Rock Nine, spoke on behalf of the Nine and stressed their gratitude for the tutoring they received at PSC while they were not allowed to attend school.

"When we were denied entrance to Central High in September 1957, during the three-week period as we



President Clinton greets well-wishers on the steps of the Administration Building  
Photo: Conti Titus

awaited the outcome of the legal wrangling over states' rights vs. federal rights, Philander Smith College faculty and students tutored us in the high school subjects being taught to our future Central High classmates," he said.

"From these dedicated educators and scholars we learned the same litany

that had been communicated to us ... that education was important and excellence was important and that excellence was the expectation," Roberts said.

Earlier in the week, the Little Rock Nine also gathered for a two-hour special session with students at PSC.

## Titus Retirement Announced

After a career in education spanning nearly 40 years, Dr. Myer L. Titus, President of Philander Smith College since 1988, has announced his retirement, effective June 30, 1998.

Dr. Sherman E. Tate, Chairman of the Board of Trustees, said "Dr. Titus has provided outstanding leadership as the President of the College, and we express our most sincere appreciation to

him for his years of dedicated service. The College family, faculty, staff, students, alumni and indeed, the entire community are invited to join us in making this year a celebration of his many great and good works."

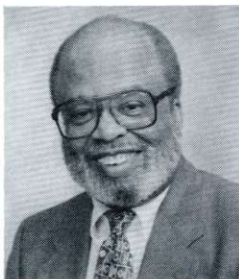
A search for a successor to Dr. Titus is underway. Interviews are currently taking place.

(See Celebration, p. 6)

### INSIDE:

- 2 Communiques
- 3 Alumni News
- 7 Campus News
- 8 UNCF Report
- 9 Contributors
- 10 Appeal

### From the President of Philander Smith College



Dr. Myer L. Titus '54

"The more things change, the more they stay the same." That expression perfectly describes the situation at Philander Smith College. We have had numerous additions to our staff since the Spring, and a noted departure as well, that of our Provost, Dr. Crawford J. Mims (story, p. 4).

We have hired a new Dean of Institutional Advancement, Dr. John Williams, who has worked at Tougaloo College and other institutions. We have consolidated the Alumni Affairs and UNCF Offices, which are now headed by Delia Moore, a 1988 graduate who comes to PSC from United Way, where she was Vice President of Programs and Services, and Dona Sheridan, our new Director of Sponsored Programs and Grants, who comes to us from the University of Nebraska. Ms. Moore and Ms. Sheridan have very important responsibilities for the College, and each of us has a responsibility to them: to make it as easy as possible for them to do the critical job of raising money to make up the shortfall between our tuition and the cost of educating students. This will help the College continue to keep pace with other institutions. Additionally, Clarissa Coleman has been hired as the Donor Relations Officer who will provide support for fundraising efforts.

If you have ideas to submit to our new staff members, we welcome your input. A fresh perspective from outside the confines of the campus often provide us with the insight we need to continue to meet both the needs of our students and the community.

### From the President of the National Alumni Association



Dr. Eulah L. Peterson '69

Fellow Philanderians, I hope you had a pleasant and rewarding summer. The 1997 National Convention, **with cruise**, made mine especially rewarding. A heartfelt "**thank you**" is extended to the Chicago Chapter for a job well done!

Philander Smith College has provided a rare privilege for each person who has spent any time on her campus. Ask yourself, where would I be today had I not passed through this special institution? Whatever success we've known, we owe in part, and I believe to a great degree, to Dear Ole PSC. Help us make sure that others will have the opportunity to walk her hallowed halls as they prepare for their careers.

I had a good introductory meeting, with Ms. Delia Moore, our new Director of Alumni Affairs/UNCF, while I was on campus in September for a Board of Trustees meeting. Please get to know her and join me in working with her to keep the Alumni Association in a progressive mode.

Fellow alumni, some of us may be going through a period of apathy. We need to boost each other and get some enthusiasm back. All of us have much to give. Our talents are highly diversified, and each one is needed to move us onward and upward. Let us pledge to shake off the cobwebs, rev up the engines, and forge ahead to the 21st century. Make a personal pledge to get more involved and invite at least one other alumnus to join you. The Association needs everyone of us to be an integral part of its ongoing program to **promote** and **support** Philander Smith College.

### From the Director of Alumni Affairs/UNCF



Ms. Delia Moore '88

I am pleased to serve you as the new Director of Alumni Affairs/UNCF. With the retirement of Sybil Bunn and Winston Muldrew, I realize that I have two gigantic pairs of shoes to fill as their successor. I thank Mr. Muldrew and Ms. Bunn for being willing to share their insight. It helped me get off to a flying start.

This position appealed to me for many reasons, but at the heart of my decision was that I get to work in a place that is near and dear to my heart and among people who have played key roles in my achievements. I have been in nonprofit administration for six years and it is very rewarding to use my fundraising experience to help increase support for the College and UNCF.

I hope you enjoy the new look of the *Philanderian*. It could not have been possible without the help of Mary Maggart, a local graphic artist who donated her time, and Dona Sheridan who did the layout.

It's great to be back on campus, and I look forward to meeting all of you!

*The Philanderian* is published four times a year: Fall, Winter, Spring and Summer. Copies are mailed to all alumni currently in the database in the Office of Alumni Affairs. Please direct correspondence to:

Delia Moore, Director  
Office of Alumni Affairs/UNCF  
Philander Smith College  
812 W. 13th Street  
Little Rock, AR 72202  
(501) 370-5392

Editor: Delia Moore  
Layout: Dona Sheridan

## Aviation Historical Society Honors Harris

The Arkansas Aviation Historical Society enshrined Dr. M. Lafayette Harris into the Arkansas Aviation Hall of Fame on October 9, 1997. Dr. Harris was one of a group of 15 Arkansans who unselfishly contributed his time, money and effort to establish and maintain the Little Rock Air Force Base in Arkansas for the benefit of his community, state and nation.

One of the greatest acts of economic significance for the people of central Arkansas was the establishment of the Little Rock Air Force Base. It also stands as the most significant event in the history of aviation in Arkansas.

The honor was conducted at the Aerospace Education Center in Little Rock.

## '98 Convention Set for Little Rock

The 1998 PSC Annual Alumni Convention will be held March 25-28 at the Hilton, located at 925 S. University in Little Rock!

The Little Rock Alumni Chapter will coordinate and host the 1998 convention. Rachel A. Myers-Jones is Chapter President.

Registration information is included in this issue of *The Philanderian*. We hope to see you there!

## PSC Alumni Cruise '97

The annual convention of the Philander Smith College National Alumni Association was held July 14-18 aboard the Norwegian Cruise Lines M/S Leeward. Everyone who attended enjoyed seeing old friends and meeting new ones.

The convention was hosted and coordinated by the Chicago Alumni Chapter. The theme was "Onward and

Upward: setting the course for our participation in and contribution to the magnificent future of our alma mater."

The Cruise Committee include Kathryn F. Worthen, Chairperson; Herman Davis, Chapter President; Mary Banks; and Marva Watts. Travel Arrangements were handled by Great American Cruises, Inc., of Memphis, TN.



## Tuskegee Airman Lt. Col. Hiram E. Mann '43 Honored

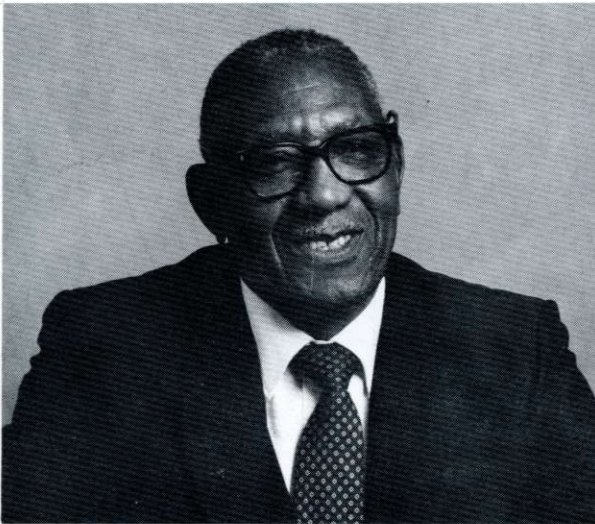
Lt. Col. Hiram E. Mann '43, retired, of the Tuskegee Airmen, received the Order of the Palmetto in Walterboro, South Carolina during a ceremony in May. South Carolina Governor David Beasley presented the honor which is the highest civilian award presented by the state of South Carolina.

A street on one side of the newly dedicated Walterboro Army Air Field Memorial Park was named after Lt. Col. Mann. A monument to the Tuskegee Airmen (Black pilots of World War II) was also unveiled. Lt. Col. Mann was supported during this occasion by his wife, Kathadaza (Henderson) Mann '45.

## Clinton Recognizes Morris Holmes '61

New Orleans Public School District Superintendent Dr. Morris L. Holmes '61, has been recognized by President Bill Clinton for his work in the school system and establishing the New Orleans Public Schools Alumni Association. President Clinton said, "We need organizations like yours all over America, keeping citizens connected with the schools after they have graduated, providing opportunities for them to improve the schools, and helping students enjoy the joys of learning." New Orleans is the 20th largest district in the nation, with nearly 90,000 students and 10,000 employees.

## Distinguished Alumnus of the Year



*Mr. L.T. Davis '51 is the 1997 Distinguished Alumnus of the Year. Mr. Davis is an active member of the Little Rock Alumni Chapter and is a dedicated supporter of Philander Smith College and the goals of the institution. Congratulations!*

## Directories Still Available

Harris Publishing Company still has a few copies of the PSC 1997 Alumni Directory. A directory can be ordered by calling Harris Publishing at 1-800-877-6554. The cost is \$56.99 for the standard edition and \$59.99 for the deluxe edition.

The directory is an excellent way to track down fellow classmates and other alums. Don't delay. Get your copy today!

## Little Rock Chapter Welcomes Freshmen

The Little Rock Alumni Chapter hosted a reception to welcome freshmen during orientation week in August. The reception was held in the foyer of the PSC Multi-Purpose Complex. Rachel A. Myers-Jones, President of the Little Rock Alumni Chapter, and other alumni shared words of encouragement to the eager students. Some of the alumni who attended and assisted with the preparation, included Rev. Maxine Allen, Shirley Buckner, Naomi Cottoms, Johnny Greenwood, Calvin Jones, Rev. C.E. McAdoo, Delia Moore, Ruth Nash, and Carolyn Rand. •



## Elders Recognized For Women's Health Role

Dr. Joycelyn Elders was honored with a Women's Health Achievement Award, presented by Pharmacia & Upjohn (P&U) on October 29. The occasion also marked the fifth anniversary of P&U's introduction of Depo-Provera Contraceptive Injection in the United States.

Continuing her tradition of speaking candidly about sexuality education and contraception issues, the former U.S. Surgeon General discussed her views on reproductive health issues. "I am disturbed when I see health legislation limiting the information we can give to young people about sexuality and contraception. Reproductive health policy in this country should be comprehensive, not limited," said Dr. Elders in reference to abstinence-only sex education programs. She also commented on unintended pregnancies, stating that 3.6 million such pregnancies occur each year.

A special breakfast gathering held by P&U honored Dr. Elders' commitment to health education. The event included a \$10,000 contribution to the College's Dr. Joycelyn Elders Endowment Scholarship. "I am grateful for this unique award, and grateful to



Photo: Arkansas Democrat-Gazette

Pharmacia & Upjohn for providing scholarships to students pursuing health care careers," said Elders.

"Through her candor and commitment, Dr. Elders has been a lightning rod and a pioneer for reproductive health issues," said Gloria Feldt, president of the Planned Parenthood Federation of America, who also spoke at the event. "This Women's Health Achievement Award couldn't be given to a more dedicated advocate for public health."

Bill Walker, director of women's health care products for P&U said, "We applaud Dr. Elders' contributions, and join her in her ongoing commitment to improving women's reproductive rights, options and education."

PSC also applauds Dr. Elders and extends thanks to her and Pharmacia & Upjohn.

## In Memoriam

### Cleophus A. De Witt '50

Mrs. Cleophus A. De Witt of Gainesville, Florida died April 1, 1997 after a long illness. Her husband, Eugene De Witt, Sr. preceded her in death. Mrs. De Witt was a retired school teacher and a faithful member of First Baptist Church in Keystone Heights, California. Survivors include her sister Mrs. Bernice Foster of San Francisco, a stepdaughter, stepson, three grandchildren and a host of other relatives and friends.

### Merrill E. Nelson '38

Mr. Merrill E. Nelson of Columbus, OH died August 17, 1997 at the age of 89. He was a retired Minister of the West Ohio Conference United Methodist Church serving over 40 years in the active ministry. Mr. Nelson was preceded in death by his wife, Marguerite Sharp Fleming Nelson. Survivors include a daughter, son, 13 grandchildren, eight great-grandchildren, four great-great grandchildren and many other loving relatives and friends.

## You Are The News - Send It In!

Alumni are encouraged to share items of interest for publication in *The Philanderian*. We are interested in how you are doing and want to hear about your accomplishments and other new developments. We appreciate those who keep us posted by sending us news, photos, and press clippings. News from local chapters, and the National and Regional Alumni Associations are needed for this publication as well. Your

reports and updates about PSC alumni are always welcomed and appreciated.

*The Philanderian* will be published four times next year during the months of February, May, August and November. Please send news to Delia Moore, Office of Alumni Affairs, Philander Smith College, 812 W. 13th Street, Little Rock, AR 72202, or fax it to (501) 370-5361. We look forward to hearing from you!

*Memorial contributions and scholarships may be established through the Alumni Affairs Office. Pay tribute to a respected colleague, cherished classmate, or loved one. Call (501) 370-5392 for more information*

## Membership Dues Expire Soon

Festive decorations are appearing in stores; fashions hint of the Yuletide season; there is a chill in the air (snowflakes have fallen in some places); and time is running out for you to minimize your 1997 tax liability. Can you believe that another year is coming to a close? This means that it's time to shop for gifts for our relatives, close friends, co-workers, and significant others.

Remember to put your National Alumni Association and Philander Smith College on your list by, at a minimum during this holiday season, setting aside and paying your dues. If you wish to get one item marked off your shopping list early, you may remit your 1998 dues now.

If you reside in a city without a

chapter, you pay only \$30.00 to the National Office in addition to the local chapter assessment. Your chapter pays \$20.00 to renew its charter. If a chapter has not been chartered in your area, you can become active by paying \$35.00. Send your dues made payable to the "National Alumni Association, Philander Smith College" to:

Ms. Jearlene Miller  
Financial Secretary  
National Alumni Association

If you have questions, you may either contact Ms. Miller by telephone at \_\_\_\_\_ or at her internet address \_\_\_\_\_

## Celebration for Titus

The Philander Smith College Board of Trustees cordially invites you to a celebration in honor of Dr. Myer L. Titus as he retires as President of Philander Smith College.

The celebration will be held Friday, Feb. 27, 1998, at Philander Smith College.

A Convocation Ceremony will take place at 10 a.m. in the M.L. Harris Auditorium, and a reception will be held 11 a.m.-12 p.m. in the Crawford J. Mims Gymnasium.

Alumni, staff, faculty, students and friends of the College are welcome to join in this recognition of Dr. Titus' many contributions to PSC and to the community. For more information, contact Rev. Jeanie Burton at (501) 324-8022.

## Pledge Form

**National Alumni Association  
Philander Smith College**

### Academic Building Fund Project

I pledge to give or raise  \$1,000  \$500  \$250  \$100  Other \$ \_\_\_\_\_  
for the retirement of the \$175,000 commitment made by the Alumni Association to the Academic Building Project at Philander Smith College, by June 30, 1998.

I will submit my pledge in \_\_\_\_\_ installment(s).  My pledge check is enclosed.

Name \_\_\_\_\_

Address \_\_\_\_\_

Phone \_\_\_\_\_

**Make checks payable to : National Alumni Association, PSC**

Mail checks to Ms. Jearlene Miller, Financial Secretary, NAA,

## Crawford J. Mims Retires



Dr. Crawford J. Mims, Provost and Executive Assistant to the President of Philander Smith College retired June 30, after 39 years of service to the institution.

Through the years, Dr. Mims has touched and inspired both students and co-workers by his love and dedication to education. He has received numerous awards and recognition for his achievements. In 1995, PSC dedicated and named a new gymnasium in his honor. Through a recent unanimous vote, the Board of Trustees bestowed Dr. Mims with the title of Provost Emeritus and professor of Education.

A retirement banquet was recently held in his honor and scores of well-wishers attended.

We deeply appreciate Dr. Mims for his commitment to PSC, and the entire PSC family misses him.

## Business & Economics Division Accredited

The PSC Division of Business and Economics was among 28 member institutions to receive national accreditation from the Association of Collegiate Business Schools and Programs during an annual conference held June 30 in Newport Beach, California. Dr. Annie Williams is the Chairperson of the division.

This accreditation action certifies that the teaching and learning processes within the institution are ones of high quality and meet the rigorous education standards established by the Association.

## B.S.W. Program Begins

Beginning this fall, Philander Smith College is offering a Social Work major for a Bachelor of Social Work (BSW) degree. Until now, no BSW degree program has been offered in central Arkansas.

The BSW program consists of 125 credit hours of courses and internships that enable students to gain the knowledge and skills that BSW social workers need to help individuals, families, and neighborhoods cope with personal and social programs. The program also will prepare students for graduate social work studies.

PSC also offers the Bachelor of Arts, Bachelor of Science, and the Bachelor of Business Administration degrees through five other academic divisions: Teacher Education, Humanities, Natural and Physical Science, Business and Economics, and Continuing Education.

For more information about the Social Work Program, call Dr. James Ayers at (501) 370-5259.

## Theater at PSC

Philander Smith College Director of Theatre, Dr. Gary N. Ellenberger, presented the school's first production of the season in October. It was the debut of the PSC Players Theatre, entitled, "*A House Divided*," a one-act play which chronicled the Civil War. The play featured three actors, who between them represented approximately 100 characters. Lighting provided the main visual effect, with the focus on the actors and the story they tell. The play was done with virtually no set, and the actors were costumed in basic black.

Dr. Gary Ellenberger came to Philander Smith College from Klamath Falls, Oregon. He is serving his first year as Director of Theatre. Dr. Ellenberger has directed more than 100 productions, designed sets and lights for over 60 shows, and played more than 40 roles in a 25-year career as a professional director, designer, actor and theatre educator. Dr. Ellenberger received his Ph.D in Theatre from the University of Utah, and his M.A. in Theatre from CSU in Los Angeles, CA.

This production of *A House Divided* appealed to audiences because it's a different type of play than they are used to seeing," said Ellenberger. "Unlike most movies or television programs, the audience is directly involved in the play, both emotionally and by interactive participation. The play runs the gamut from low comedy to high intensity drama, with extensive accapella music performed live by the actors."

PSC Freshman Nehemiah Suggs from Forrest City, AR made his acting debut in this season's production. Rounding out the cast is Little Rock actor Paul H. Floyd, known for his many performances at the Weekend Theatre. His most recent role was in "The Boy Next Door." Performances were held in the Myer L. Titus Academic Center.



## Cochran Speaks at UNCF Banquet



Attorney Johnnie L. Cochran, Jr., one of the nation's leading authorities on criminal justice was the special guest speaker at The College Fund/UNCF "Frederick D. Patterson" banquet that was held on Saturday, November 22nd at the Statehouse Convention Center in Little Rock.

At the banquet, Cochran urged UNCF supporters to strive for

excellence. "No matter what you are, be excellent in that endeavor," Cochran told the crowd of 350. "Excellence is the destination, we are the vehicle, and striving is what gets us to the destination.

Cochran also encouraged parents and other adults to help black youth by setting a positive example. "We've got an obligation to lead by example and show them the way. Don't write off any of our young people," he said.

During the event, recognition was extended to volunteers who have contributed their time, resources and finances to UNCF and education.

The Frederick D. Patterson Memorial Award recipient this year was Sybil Bunn, former UNCF Director at PSC.

Volunteer awards were given to Mr. and Mrs. Elijah Pitts and Peggy Gene Burns for their significant contributions to PSC.

Three corporate sponsors were recognized for their support over the years: J.M. Products, Entergy, and Southwestern Bell. The Southwestern

Bell Black Advisory Panel also was recognized with a certificate of appreciation.

After the banquet, a book signing and reception were held. Mr. Cochran signed scores of copies of his newly released book, *Journey to Justice*.

Philander Smith College is one of 39 UNCF supported colleges to benefit from The College Fund UNCF, and is the only UNCF supported school in Arkansas.

The banquet is held annually as a fundraiser in honor of education pioneer Dr. Frederick D. Patterson who founded the United Negro College Fund in 1944. Proceeds from the event benefit The College Fund/UNCF which provides educational opportunities to students.

Cochran also spoke to PSC students during a special session on campus. "If you put God at the center of your life, then all things can become possible," he said.

In appreciation for his talks, Cochran received a Key to the City, and Arkansas Traveler's Certificate and a PSC T-shirt.

## An Evening of Stars

On January 10, 1998, The College Fund/UNCF will present An Evening of Stars, a national television entertainment special with an exciting new four-hour format. Locally, the special will be aired on KASN/UPN 38, 6-10 p.m. (CST). Check your local listings.

The show will feature extended concert performances by some of the music industry's top artists and appearances by professional athletes, media personalities, and a host of other national celebrities.

An Evening of Stars will raise awareness about the importance of higher education and the need to increase financial support available from



A CELEBRATION of EDUCATIONAL EXCELLENCE  
BENEFITING THE  
UNITED NEGRO COLLEGE FUND

UNCF to provide scholarships to students. Lou Rawls, founder and originator of UNCF's national entertainment television special, will serve as lead co-host among an all-star host lineup. The program will air on more than 60 television stations across the country and will reach more than 90 million households.

A toll-free number will be featured throughout the program by which interested donors can support The College Fund/UNCF. This replaces the traditional telethon phone banks.

For more information, call Delia Moore at (501) 370-5392.



# 1998 National Alumni Convention REGISTRATION CARD

Name: \_\_\_\_\_  
 Address: \_\_\_\_\_  
 City: \_\_\_\_\_ State: \_\_\_\_\_ Zip: \_\_\_\_\_  
 Telephone: \_\_\_\_\_  
 Class Year: \_\_\_\_\_

**Registration Fees (includes all convention activities):**

Early Bird	\$130.00	Postmarked by Feb. 21, 1998
Registration	\$145.00	After Feb. 21, 1998

Registration Packet will include the following tickets: 1) Luncheon, 2) Banquet, 3) Dance, 4) Hospitality Suites) and one Souvenir Booklet. See below for price of individual tickets.

**Additional Activity Tickets:**

_____ Luncheon Ticket .....	\$25.00	\$ _____
_____ Dance Ticket .....	\$30.00	\$ _____
_____ Banquet Ticket .....	\$45.00	\$ _____
_____ Hospitality Suite(s) Ticket .....	\$25.00	\$ _____
_____ Souvenir Booklet .....	\$20.00	\$ _____
AMOUNT SUBMITTED FOR REGISTRATION		\$ _____
AMOUNT SUBMITTED FOR EXTRA EVENTS		\$ _____
<hr/>		
TOTAL ENCLOSED		\$ _____

Each person is responsible for his/her hotel reservation. Please see the hotel reservation card below. Note: If you have special dietary requirements, please attach them to the hotel card on the reverse of this form. Please make checks payable to "PSC CONVENTION '98". Send payment and this form to:

Greater Little Rock Alumni Chapter  
 c/o PSC National Alumni Convention

For additional information, call \_\_\_\_\_ (Chapter President Rachel Myers Jones)  
 or \_\_\_\_\_ (Convention Co-Chair, Yvonne Alexander).

## Hilton Inn, Little Rock March 25-28, 1998

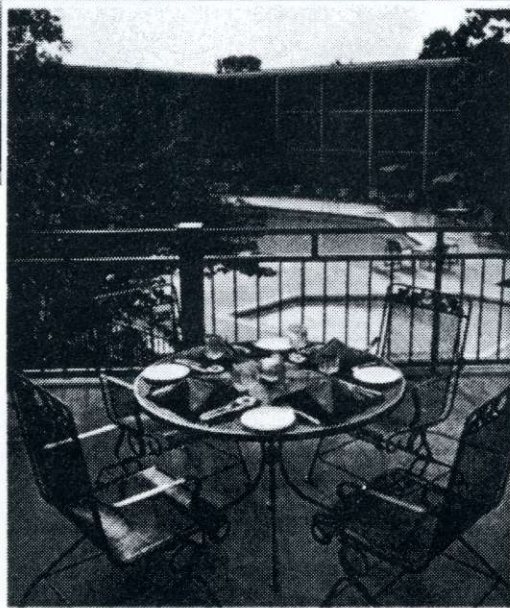
Look for Additional  
 Convention Information  
 After New Year's.

# 1998 National Alumni Convention

## March 25-28, 1998



The Hotel has recently been remodeled inside and out, and has changed its Banquets and Catering service, offering new and exciting dishes in its restaurant.




**Little Rock**  
*Hilton*  
**INN**  
**Little Rock Hilton Inn**  
**925 S. University**  
**Tel (501) 664-5020**  
**Fax (501) 664-3104**



**MAIL TO:**  
**Little Rock Hilton Inn**  
**925 S. University Avenue**  
**Little Rock, AR 72204**

### REGISTRATION CARD

Group Name: PSC, Inc. Meeting Dates: March 25-28, 1998  
 Arrival: Day \_\_\_\_\_ Date 3/ \_\_\_\_\_ Time \_\_\_\_\_  
 Depart: Day \_\_\_\_\_ Date 3/ \_\_\_\_\_ Time \_\_\_\_\_ No. in Party \_\_\_\_\_  
 Name: \_\_\_\_\_  
 Address: \_\_\_\_\_  
 City: \_\_\_\_\_ State: \_\_\_\_\_ Zip: \_\_\_\_\_  
 Telephone: \_\_\_\_\_

Please check one:

- Single ..... \$62.00                       Triple ..... \$82.00  
 Double ..... \$72.00                       Quad ..... \$92.00

Suites are available by calling the Hotel direct. Reservation Cut-Off date is March 11, 1998. Reservations will be held only 24 hours prior to arrival, without credit card guarantee of first-night deposit.

Please guarantee my room with the following:

Credit Card: \_\_\_\_\_ CC#: \_\_\_\_\_

Exp. Date: \_\_\_\_\_

All guaranteed reservations must be cancelled more than 24 hours prior to arrival to avoid a no-show charge.

## Working Together To Put Excellence Within Reach

PSC gratefully recognizes the following individuals for helping to make a PSC education both excellent and affordable. (Contributions are for the period ending June 30, 1997).

### Business, Corporations, Associations, Foundations, Trusts and Churches

S.C. Johnson Wax Fund  
Ford Motor Company  
Union Pacific  
Terminix, Inc.  
Entergy  
First Commercial Bank  
ARKLA  
Southwestern Bell  
Walter T. Morgan Golf Entertainment  
PSC National Alumni Association  
Friends Forever  
PSC Chicago Chapter  
PSC Los Angeles Chapter  
Alpha Phi Alpha, Inc.  
Little Rock Chapter of LINKS  
PSC Northern California Chapter  
Scipio Jones Illinois Alumni Chapter  
J. A. Riggs Benevolent Fund  
Elizabeth Wagner Trust  
United Methodist Foundation  
Charles A. Frueauff Foundation  
Pheiffer Foundation  
R.E.L. Wilson  
Teagle Foundation  
J. D. Walthour Trust  
St. John United Methodist Church  
United Methodist Church Arkansas Area  
St. James United Methodist Church

### Alumni and Friends

Rev. Samuel B. Teague  
Mr. & Mrs. Merton Zeisset  
Sandra Smith  
Rev. Herschel McClurkin  
Marlin D. Jackson  
Rev. E. W. Harris  
Alveretta Lynch  
Annie Hodges  
Mrs. & Mrs. Steve Aboagye  
Mr. & Mrs. Cecil Twillie  
Rev. & Mrs. C. E. McAdoo  
Vivian Hines  
Dorothy M. Exum  
Mildred T. McNair  
Johnnie Reid  
Emma R. Lester  
Nathaniel Noble  
James Adams  
Rachel Myers  
Winston Muldrew  
Jerome Muldrew  
Bernard Cooper  
Carreather Perry  
Phillip Bledsoe  
Ethan Dodgen  
Argean Hicks  
Calvin J. Jones  
Mr. & Mrs. Roosevelt Fraction  
Jearline Miller  
Dan Ballenger  
Ted & Janet Hunstman

### Alumni and Friends

Dr. & Mrs. Ernest Kistler  
Mr. & Mrs. George Walker  
Bishop Richard Wilke  
Deryll Gibson  
Martin & Judith Grossack  
Clark C. McClinton  
Wayne White  
Donald V. Benson  
Homer T. Jones  
Rev. Jeanie P. Burton  
Mr. & Mrs. Robert Brown  
Mr. J. A. Sanders  
Georg G. Iggers  
Winifred M. Whitfield  
Mrs. & Mrs. John S. Workman  
Bernice S. Hayman  
Rev. Edward W. Harris  
Clifford Davis  
Mrs. David P. Conyers  
Lula Carter  
Donald B. Banker  
Harry Robinson, Jr.  
Arthur E. Bragg  
Berniece Foster  
Erma Jenkins  
Sidney Moncrief  
Emery Jarrett  
James E. Braxton, Jr.  
Lula F. Carter  
Kay Roberts Clowney  
Dr. M. A. Jackson

**There are many ways to give to Philander Smith College. Gift opportunities include:**

**Cash.** The majority of gifts to the college are in the form of cash, deductible for income tax purposes.

**Pledges.** Pledges, made in writing, payable over three to five years, are also encouraged.

**Planned Gifts.** Planned gifts include the establishment of bequests, annuities, life insurance policies, real

estate holdings, charitable trusts and class endowment programs. All of these areas may include substantial tax benefits.

**Matching Gifts.** Matching gift programs have been established in more than 800 corporations; the company matches, in varying amounts, employee gifts made to colleges and universities.

**Gifts-In-Kind.** Philander Smith College accepts gifts of most forms of valuable property: real estate, paintings,

rare books, antiques, mineral or petroleum interests, stamps, coins or jewelry.

**Naming Opportunities.** "Living memorials" (a gift honoring a loved one, living or deceased). Examples include scholarship funds, book funds, faculty offices and other rooms in renovated or new buildings.

For more information, contact Dr. John Williams, Dean of Institutional Advancement, at (501) 370-5234. •

Dear Fellow Philanderians:

The Alumni Association accepted the challenge to raise \$200,000 toward the cost of construction of the new Academic Building. The building was occupied in the Fall of 1996, and it has proven to be a valuable educational center for students at Philander Smith College. We should all be proud to know that we are a part of the College's growth and beautification.

Alumni from each region are to be commended for the effort to reach our \$200,000 goal. Although the Association made one partial payment on this goal, we fell short of our original commitment. **We still must raise \$175,000!** We need your support, and I know you can be counted on to rise to the occasion.

At the Convention in July, alumni from all four regions readily renewed the commitment to eliminate the debt within a year. We pledged to each give or raise \$1,000 by June 30, 1998. If a mere 175 alumni will be responsible for \$1,000 each, the challenge will be met. It was suggested that we could make the contribution in two installments: \$500 by December 31, 1997, and \$500 by June 30, 1998.

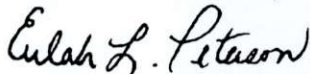
The National Alumni Association urges **all** alumni to join in this worthwhile effort. Even if you absolutely cannot contribute or raise \$1,000, please give some amount. It would make you and your Alma Mater proud! A College is only as strong as its alumni. Let's prove that Philander Smith College is "awesome"! If each of us accepts the challenge, we will reach our goal!

You are asked to complete the Pledge Form on page 6 and send it back along with your check. Please make checks payable to: National Alumni Association, PSC Incorporated, and mail them to Ms. Jearlene Miller, Financial Secretary, 1801 Ruby Road, Irving, TX 75060. The enclosed envelope may be used to return your check and pledge form.

If you have questions, please feel free to call me at \_\_\_\_\_ effort is greatly appreciated.

. Your prompt attention to this

Yours for a better PSC,



Eulah L. Peterson, Ph.D., President  
National Alumni Association

***Please help us locate  
missing alumni!***

***When you find a lost alum,  
call the Office of Alumni  
Affairs at (501) 370-5392***

***When you move, please  
send your new address  
and phone number  
to PSC, too!***

Philander Smith College  
Office of Alumni Affairs  
912 West 13th Street  
Little Rock, AR 72202

Address Service Requested

NONPROFIT ORG.  
U. S. POSTAGE  
**PAID**  
Little Rock, AR 72202  
Permit No. 2469