

Bygone Days in Swaledale - Keld & Upper Swaledale

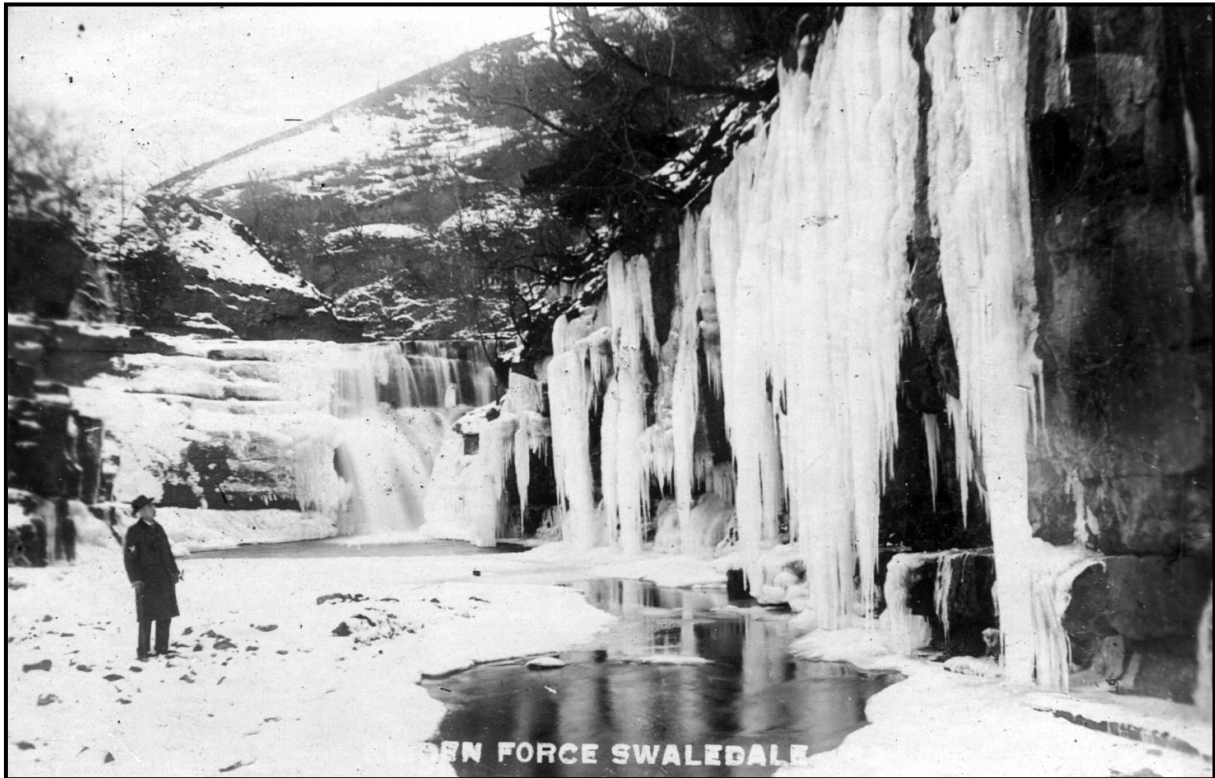


Thwaite Chapel



Cat Hole Inn (Hope House)

Bygone Days in Swaledale - Keld & Upper Swaledale

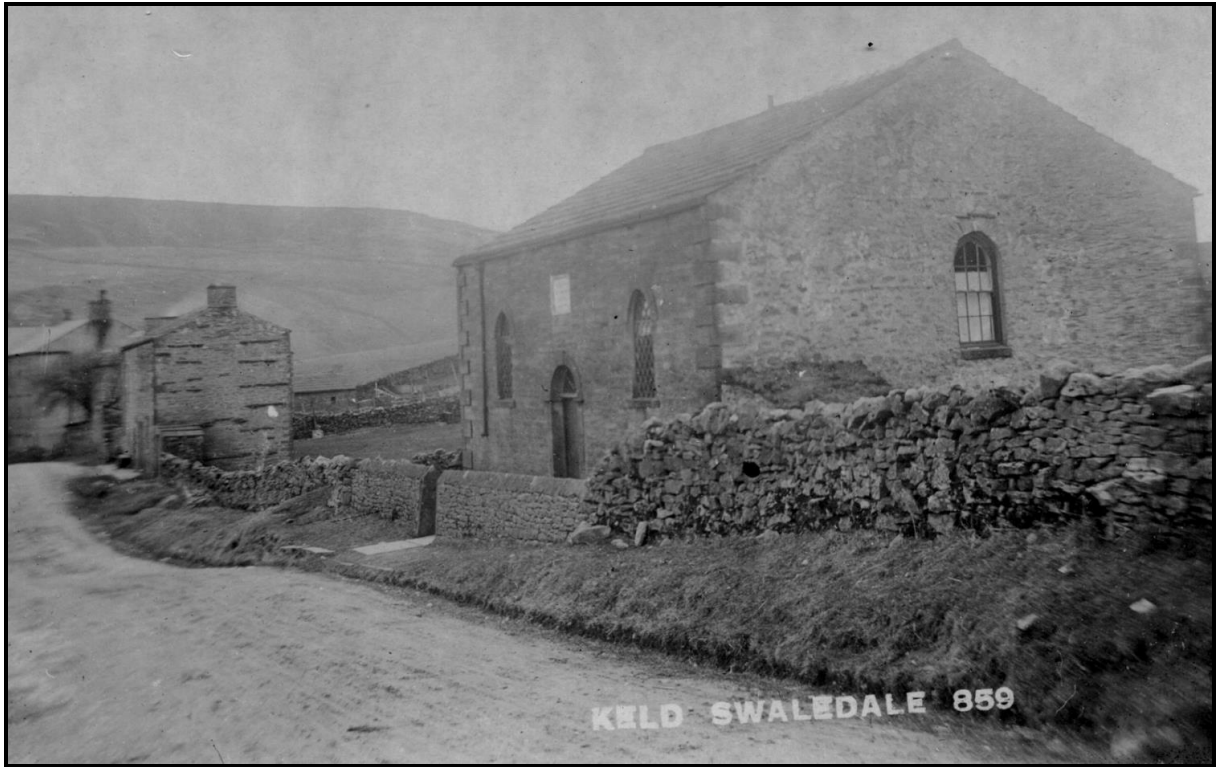


Kisdon Force

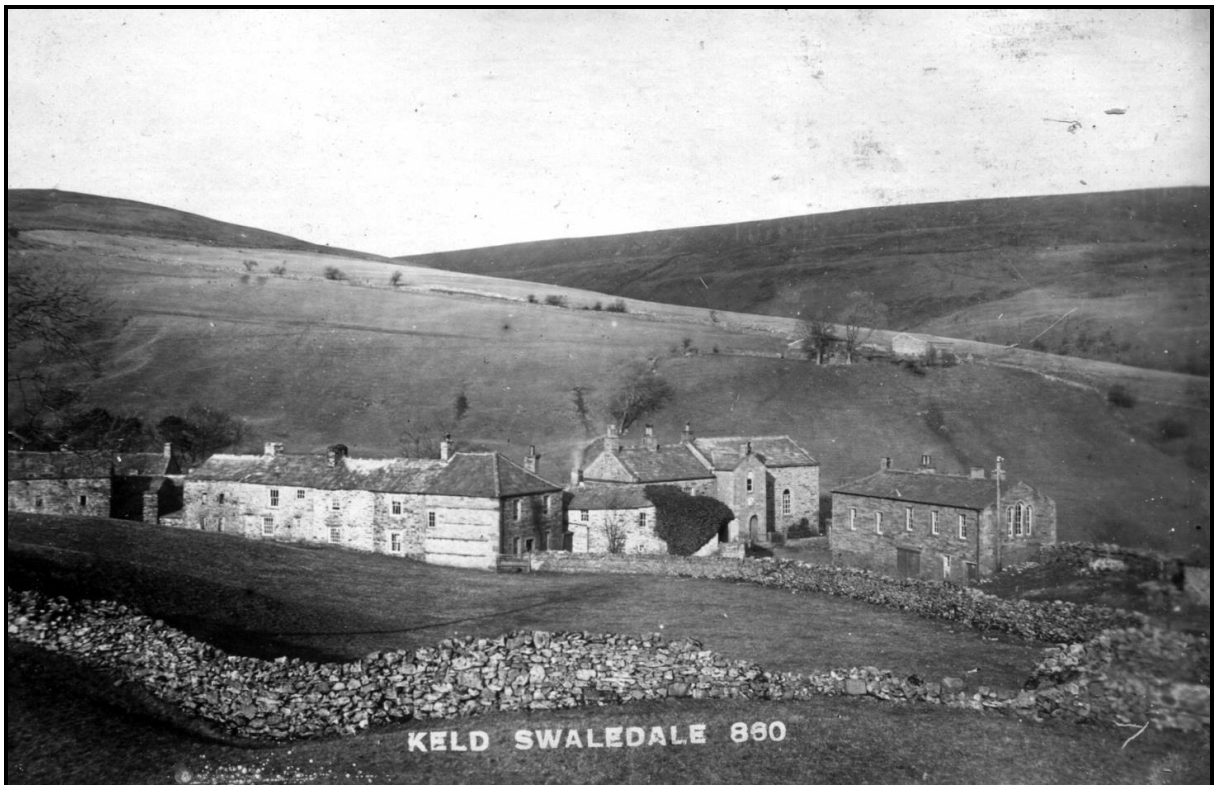


Keld

Bygone Days in Swaledale - Keld & Upper Swaledale



Methodist (top) chapel



Keld

Bygone Days in Swaledale - Keld & Upper Swaledale

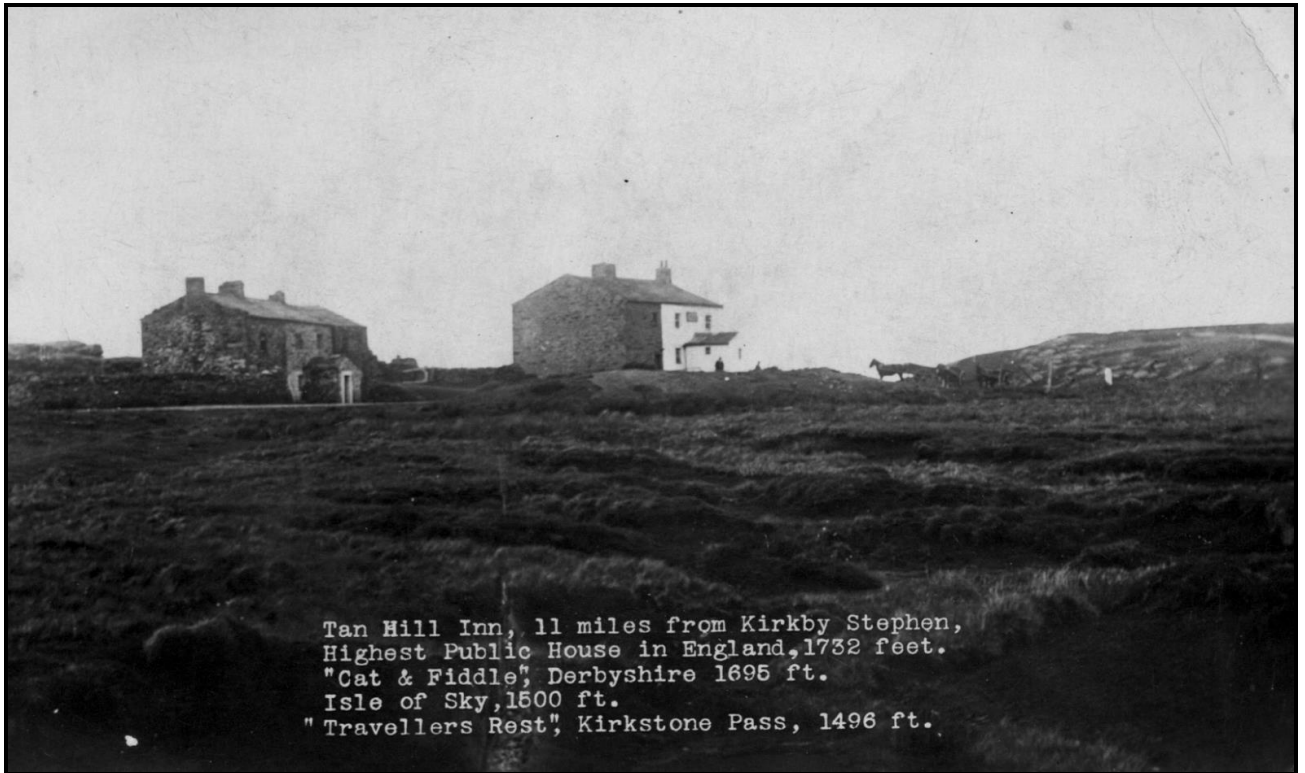


Moulds Colliery, near Tan Hill



Tan Hill

Bygone Days in Swaledale - Keld & Upper Swaledale



Tan Hill



Bygone Days in Swaledale - Keld & Upper Swaledale



Bridge End



Keld Lodge

Bygone Days in Swaledale - Keld & Upper Swaledale



Keld



Keld

Bygone Days in Swaledale - Keld & Upper Swaledale



THE CAT HOLE INN AT KELD

THERE are several small inns amid the wild moorlands of the Pennine Chain, especially in the North Riding of Yorkshire, near the boundary with Westmorland. None of them is more happily set to receive tired and thirsty travellers than the lonely "Cat Hole" illustrated above, which is situated at the moor end of the tiny village of Keld, three miles north-west of Muker, where the infant Swale breaks out from the moorlands of High Seat and has cut a narrow valley for itself between the limestone hills, quickly broadening into the green pastures and romantic scenery of Swaledale. "The Cat Hole," like all the lonely inns in this thinly populated countryside, is plain and unadorned and built solidly and four-square of the local stone, the same stone which makes up the wall in the foreground and the outcrops on the hills themselves. "The Cat Hole" is literally the last outpost of civilization for the traveller about to set out to cross the main ridge of the Pennines.

Bygone Days in Swaledale - Keld & Upper Swaledale



Keld Band



Keld

Bygone Days in Swaledale - Keld & Upper Swaledale

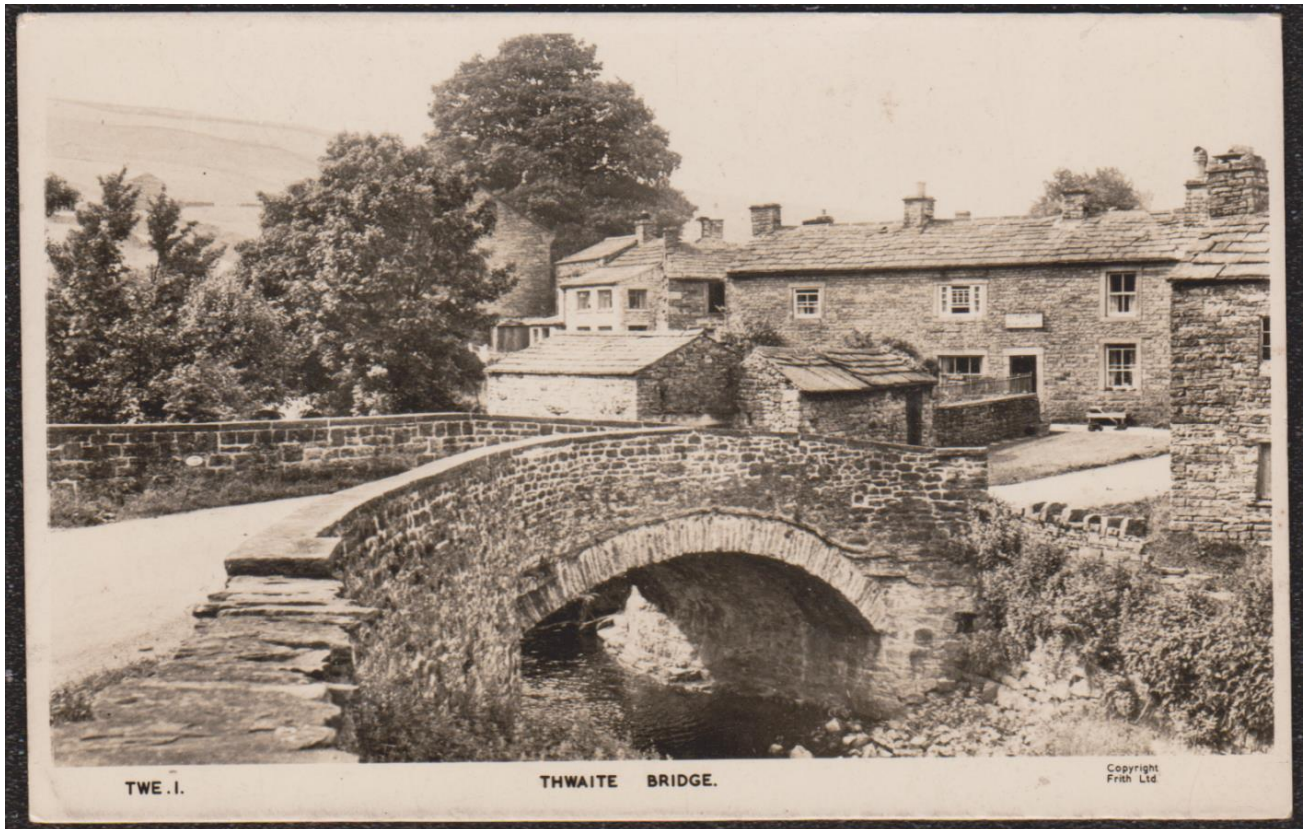


Postcard 1962



Postcard of Keld

Bygone Days in Swaledale - Keld & Upper Swaledale



Francis Frith Postcard of Thwaite Bridge



Bridge End

Bygone Days in Swaledale - Keld & Upper Swaledale



Postcard of the Cat Hole Inn



River Swale near East Gill

Bygone Days in Swaledale - Keld & Upper Swaledale



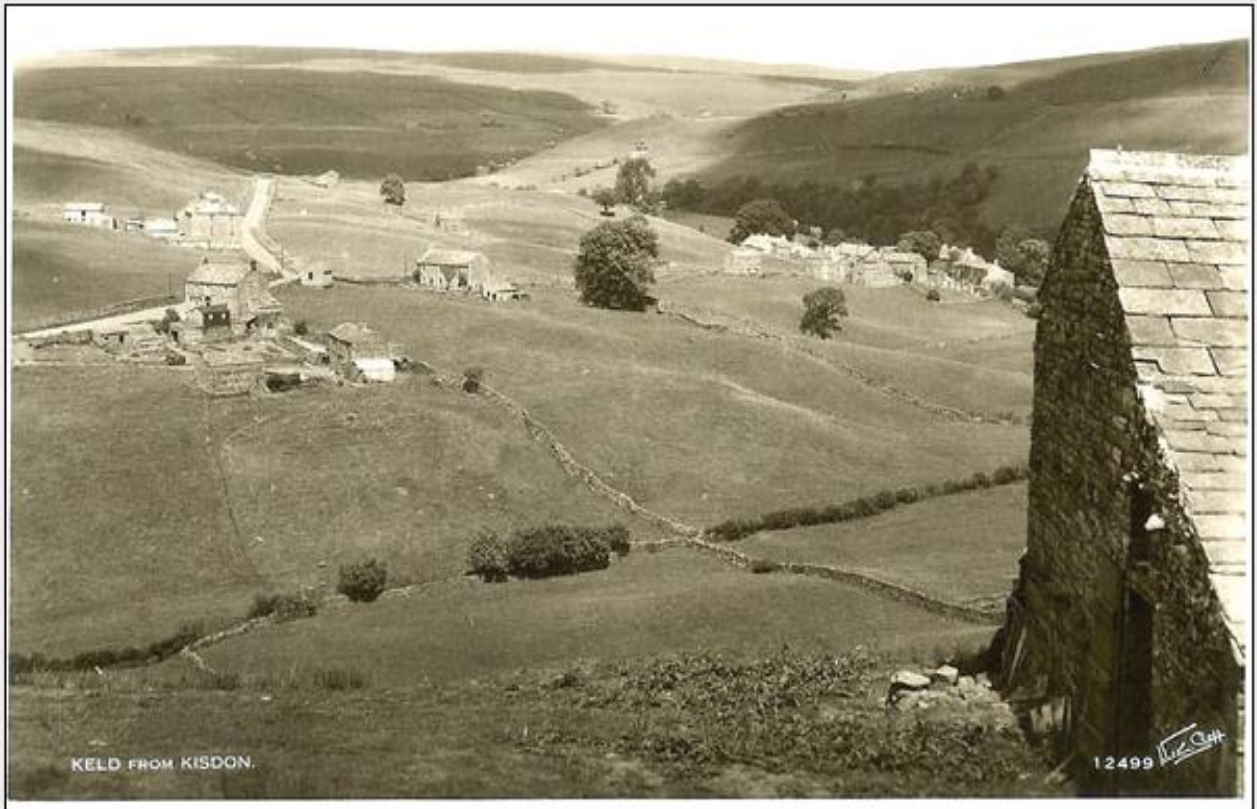
Postcard of Keld (Helen Guy)



Postcards of Keld (Scott)

Images reproduced with kind permission from the Millennium Collection by David Bulman unless alternative credit
These images should not be copied, sold or reproduced without permission.
Keld Resource Centre Archive

Bygone Days in Swaledale - Keld & Upper Swaledale



Postcard of Keld (Walter Scott)



Postcard of Keld

Bygone Days in Swaledale -Keld & Upper Swaledale



Postcard of Keld (Walter Scott)



Postcard of Keld

Bygone Days in Swaledale -Keld & Upper Swaledale



View from Cat Hole Inn



1930's (Joan Moody)

Bygone Days in Swaledale - Keld & Upper Swaledale



Outside Keld Chapel, 1930's (Joan Moody)

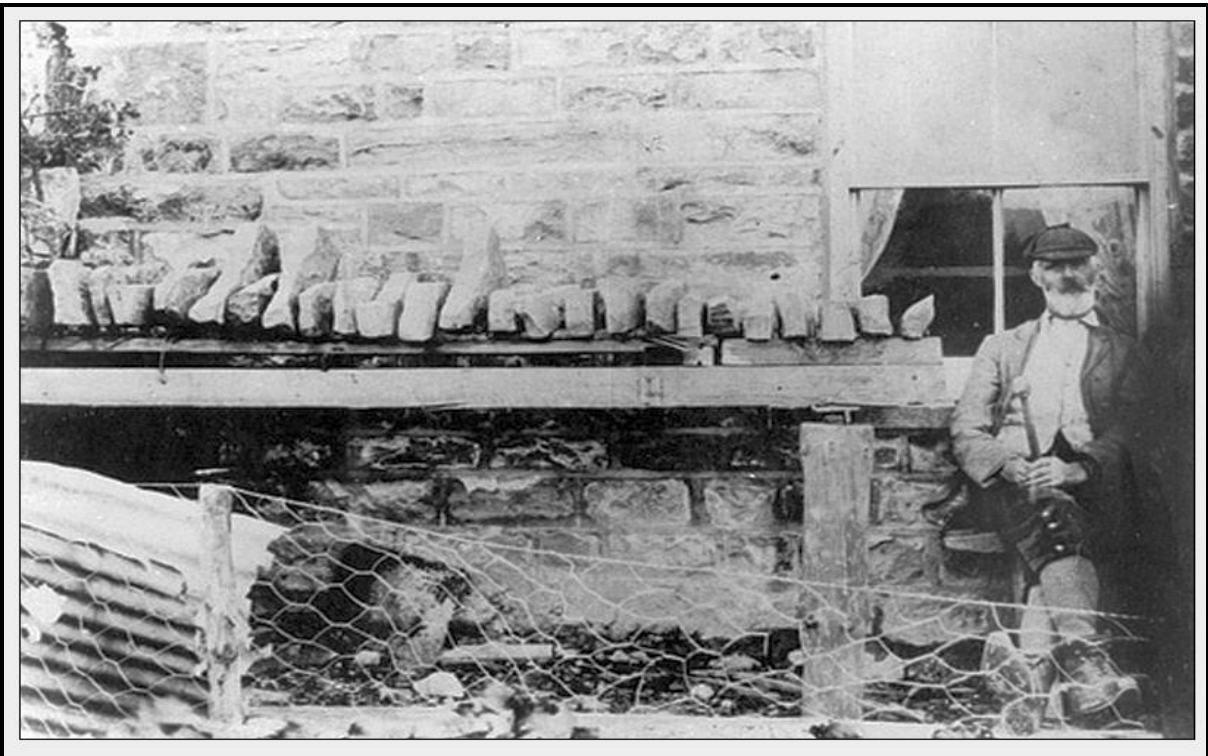


Village group in the Public Hall

Bygone Days in Swaledale - Keld & Upper Swaledale



Jean & Ann Clarkson, Dorothy & John Rukin, Mrs Rukin (Clarkson family)



Neddy Dick (1845 - 1926) & his stone piano, Birk Hill View

Bygone Days in Swaledale - Keld & Upper Swaledale



Harker children at Crackpot Hall Farm, late 1930's (BBC Archives)



John & Margaret Harker with daughter Alice, Crackpot Hall (BBC Archives)

Images reproduced with kind permission from the Millennium Collection by David Bulman unless alternative credit

These images should not be copied, sold or reproduced without permission.

Keld Resource Centre Archive

Bygone Days in Swaledale - Keld & Upper Swaledale

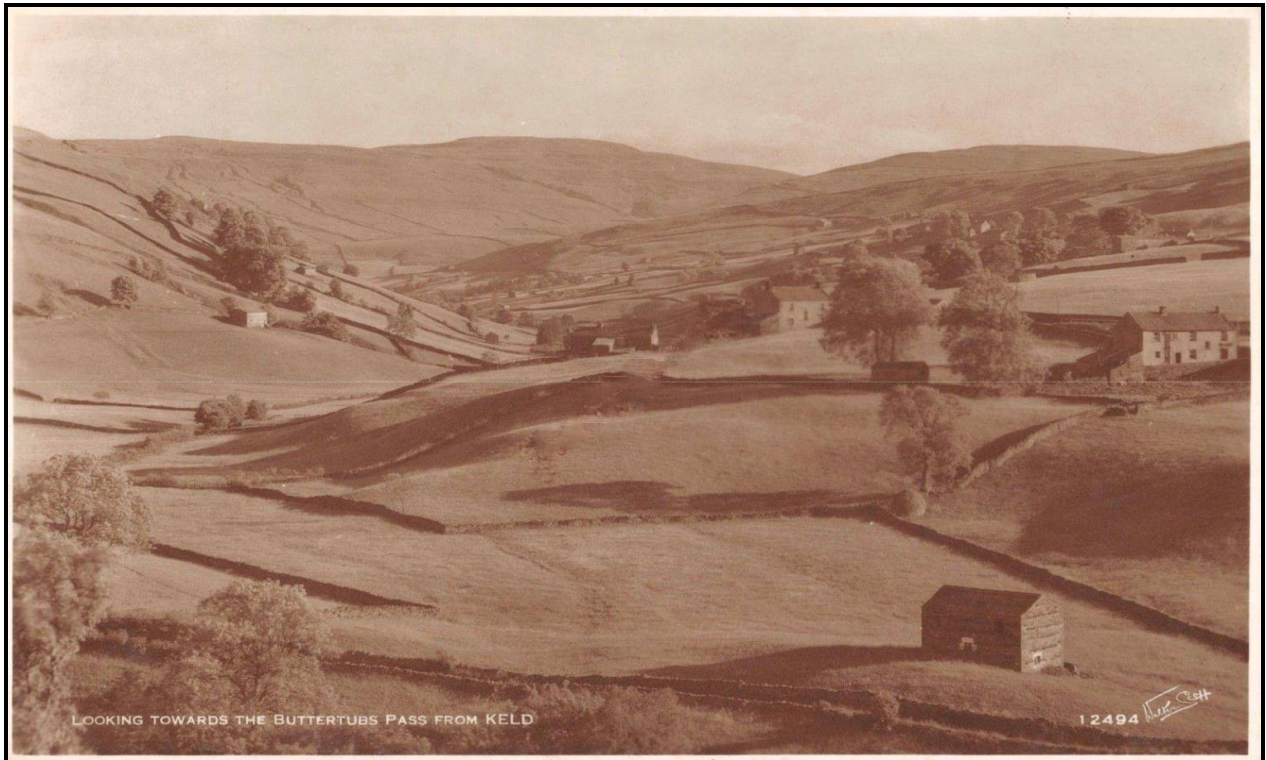


Unknown building



Postcards of Thwaite & Keld (Walter Scott)

Bygone Days in Swaledale - Keld & Upper Swaledale



Postcard of Keld (Walter Scott)



Cat Hole Inn (source unknown)

Bygone Days in Swaledale - Keld & Upper Swaledale



Postcard of Thwaite (source unknown)



Sheep in Keld 1950's (source unknown)

Bygone Days in Swaledale - Keld & Upper Swaledale



Bridge End & Silver Hill (source unknown)



Postcard of Muker (Walter Scott)

Bygone Days in Swaledale - Keld & Upper Swaledale

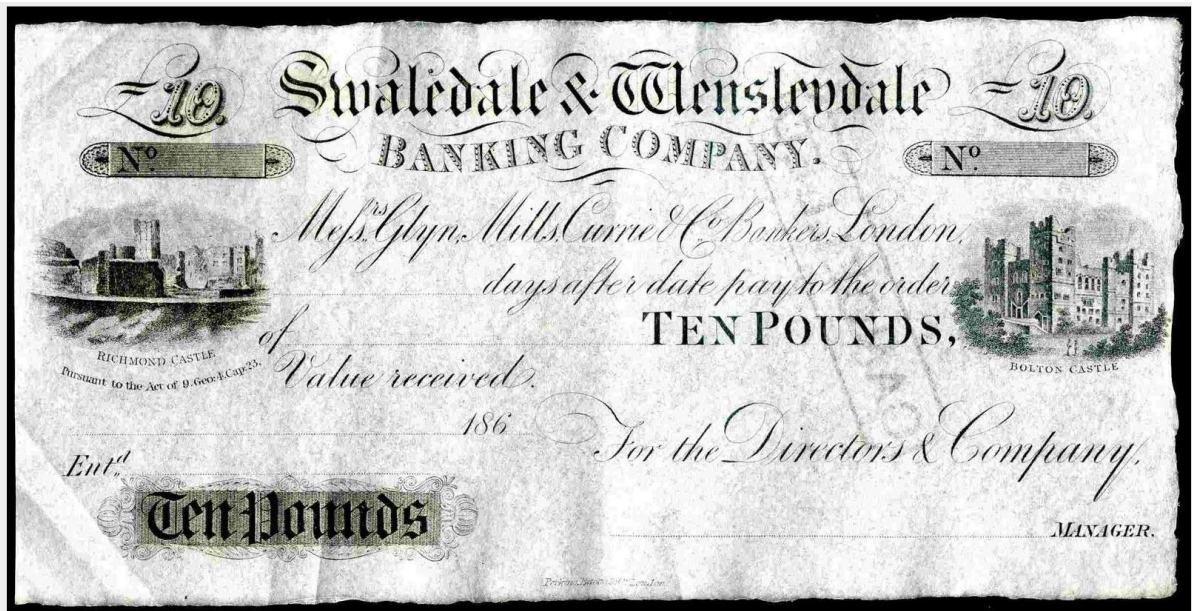


Postcard of original bridge over Swale near Keld (source unknown)



Postcard of Muker (Walter Scott)

Bygone Days in Swaledale - Keld & Upper Swaledale



Ten pound note from the Swaledale & Wensleydale Banking Company (archive.Barclays.com)



Cat Hole Inn (Hope House)

Bygone Days in Swaledale - Keld & Upper Swaledale

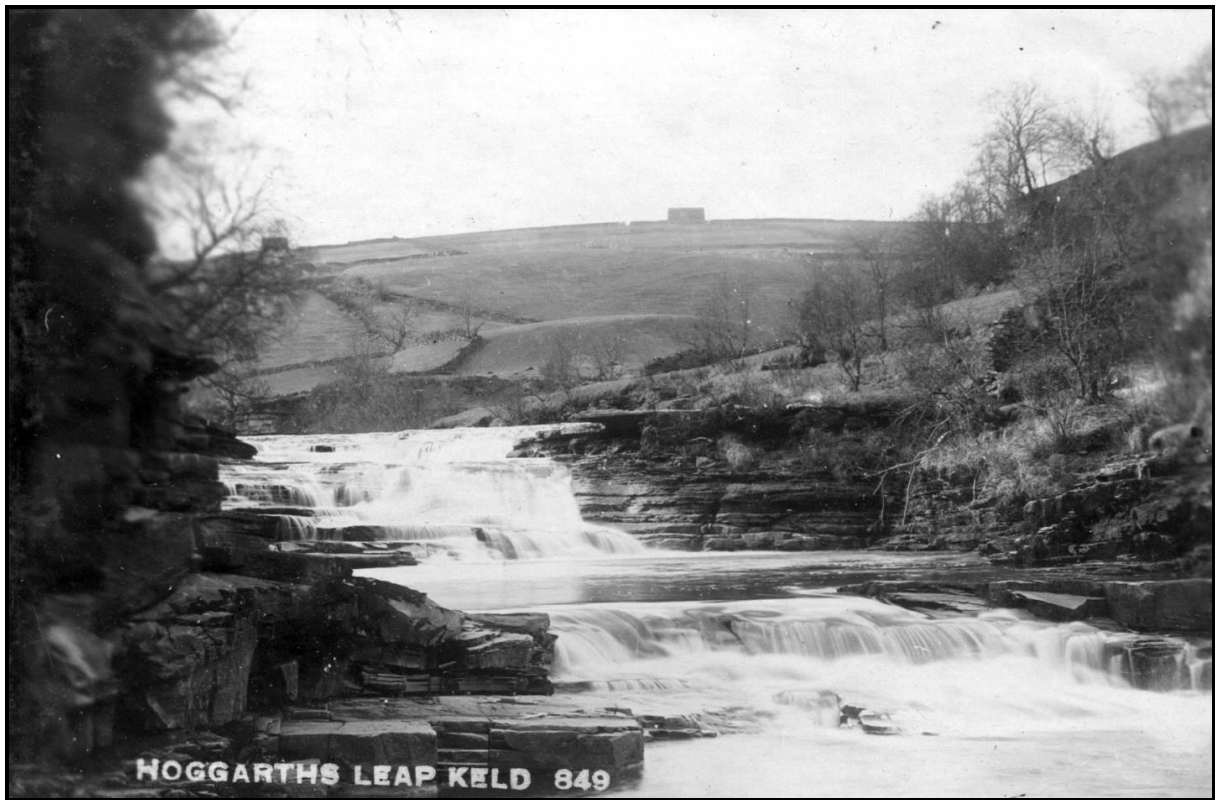


Keld (private collection)



Catrake Force (private collection)

Bygone Days in Swaledale - Keld & Upper Swaledale



Postcard of Hoggarth's Leap (private collection)



Postcard of Rainby Falls (private collection)

Bygone Days in Swaledale - Keld & Upper Swaledale



Butt House 1940's (private collection)



Keld 1955 (private collection)

Bygone Days in Swaledale - Keld & Upper Swaledale



Butt House, 1950's (private collection)



Crackpot Hall (private collection)

Bygone Days in Swaledale - Keld & Upper Swaledale



Keld 1950's (private collection)



Silver Hill (private collection)

Bygone Days in Swaledale -Keld & Upper Swaledale



Swinnergill Kirk 1932 (private collection)