



LOW ROW, SWALEDALE.

Proposed New Literary Institute.

SIR OR MADAM,

We, the undersigned, are appealing to you to help us to erect a building which shall serve as Literary Institute for Kearton, Feetham, Low Row, Blades, Smarber, Whitaside and Crackpot Side, all of which are situated within the district of Low Row in the parishes of Melbecks and High Grinton. We are at present using as a Reading Room an old miner's cottage, which is small, dark, damp and draughty. We have for a good while felt that we ought to try to secure more attractive and larger premises for the good work which has been carried on for a number of years under very unfavourable conditions.

We have already proceeded so far with our undertaking that from a number of estimates for the work we have accepted one for the sum of £396. In addition to this we expect to have to spend £50 or £60 in furnishing our Institute, and there will be further need of funds for supplying books for the proposed library. The Committee are delighted with the earnest interest shown by the people of the district, and especially with that of the young men, who are giving a great deal of time to the work which is preparatory to the actual building, and thus saving considerable expense.

The Institute will be Non-Political and Unsectarian.

From the following list of Subscriptions you will see that the people of this thinly populated neighbourhood are doing what they can towards this desirable object. The Committee would be very grateful for any help which you may give, seeing that this is an almost purely working class community, and that the sum required for the scheme is beyond our power to raise without the help of sympathisers and friends at a distance

SIGNED,

Rev. R. V. TAYLOR, Melbecks Vicarage.
Rev. THOMAS CLARKE, Congregational Minister,
Low Row.
Councillor WILLIAM COATES, Summer Lodge, Low
Row, Treasurer.
Mr. RALPH SUNTER, Blades, Low Row, Secretary
to the Institute.
" JOHN COATES, Junr., Kearton.
" JAMES BEARPARK, Low Row.
" THOMAS BROWN, Low Row.
" MATTHEW BELL, Low Houses, Low Row.
" WILLIAM GILL, Low Row.
" Councillor JONAS SWALES, Grinton, Richmond.

Mr. THOMAS THOMPSON, Blades, Low Row.
" EDWARD CHERRY, Fremington, Reeth,
Richmond.
" JOHN REYNOLDSON, Reeth, Richmond.
" JAMES PEACOCK, Crackpot, Low Row.
" THOMAS PEACOCK, Low Whita, Low Row.
" JOHN SUNTER, Kearton, Low Row.
" JOHN ALDERSON, Birk Park, Low Row.
" JOHN WHITFIELD, Robin Gate, Low Row.
" THOMAS URWIN, Low Row.
" RALPH WHITE, Kearton, Low Row.
" GEORGE METCALFE, Crackpot Side.

It is particularly requested that subscriptions, should in every case, be sent to the Treasurer,

Councillor WILLIAM COATES, Summer Lodge, Low Row, Richmond, Yorks.

Bygone Days in Swaledale - Melbecks Collection 2



Laying the foundation stones of the Low Row Institute 14th April 1909



Bygone Days in Swaledale - Melbecks Collection 2



Group at the foundation stone laying ceremony 1909



Low Row Institute 1910

Bygone Days in Swaledale - Melbecks Collection 2



Outside the Institute, Low Row



Group of ladies outside the Institute

Bygone Days in Swaledale - Melbecks Collection 2



Unknown group and date



Sunter family 1924

Bygone Days in Swaledale - Melbecks Collection 2



R Calvert and B Sunter

Images reproduced with kind permission from the Millennium Collection by David Bulman, unless alternative credit
These images should not be copied, sold or reproduced without permission.
Keld Resource Centre Archive

Bygone Days in Swaledale - Melbecks Collection 2



Smarber Chapel nameplate



Commemoration service 14th August 1932

Bygone Days in Swaledale - Melbecks Collection 2



Commemoration service 14th August 1932



Play in Low Row Institute

Bygone Days in Swaledale - Melbecks Collection 2



Village plays and concerts in Low Row



Bygone Days in Swaledale - Melbecks Collection 2



Wesleyan Training School, Low Row



Low Row School 1888

Bygone Days in Swaledale - Melbecks Collection 2



Low Row school (dates unknown)



Bygone Days in Swaledale - Melbecks Collection 2



Low Row school (dates unknown)



School children outside the Post Office

Images reproduced with kind permission from the Millennium Collection by David Bulman, unless alternative credit
These images should not be copied, sold or reproduced without permission.

Keld Resource Centre Archive

Bygone Days in Swaledale - Melbecks Collection 2



Group of children outside Low Row Wesleyan Chapel



Group of children outside the School

Bygone Days in Swaledale - Melbecks Collection 2



Group of children outside the School

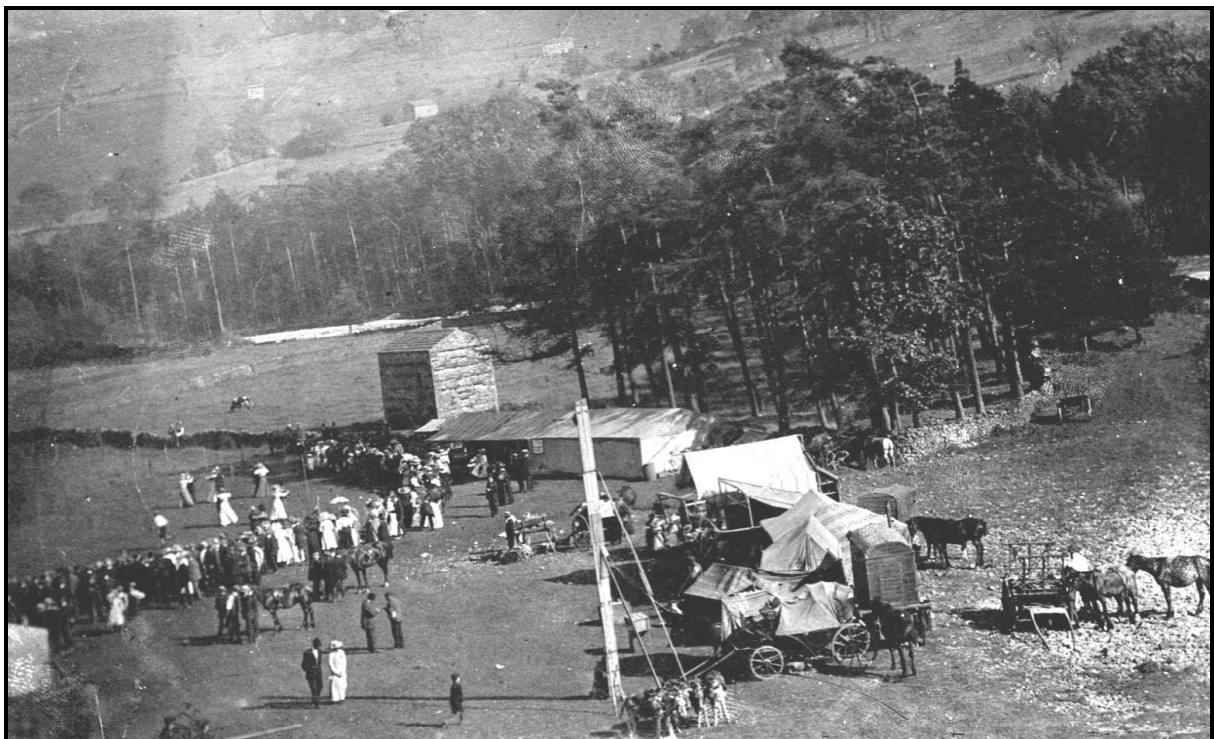


Children's camp

Bygone Days in Swaledale - Melbecks Collection 2



School children

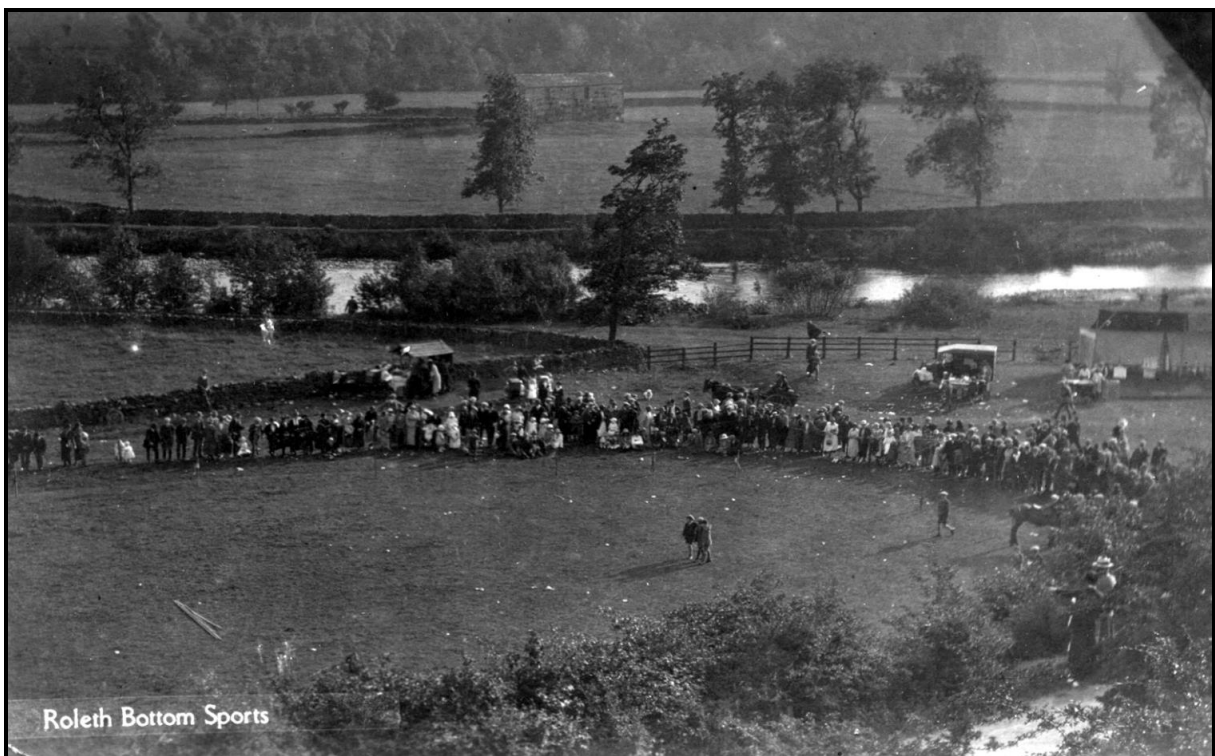


Rowleth Bottom Sports

Bygone Days in Swaledale - Melbecks Collection 2

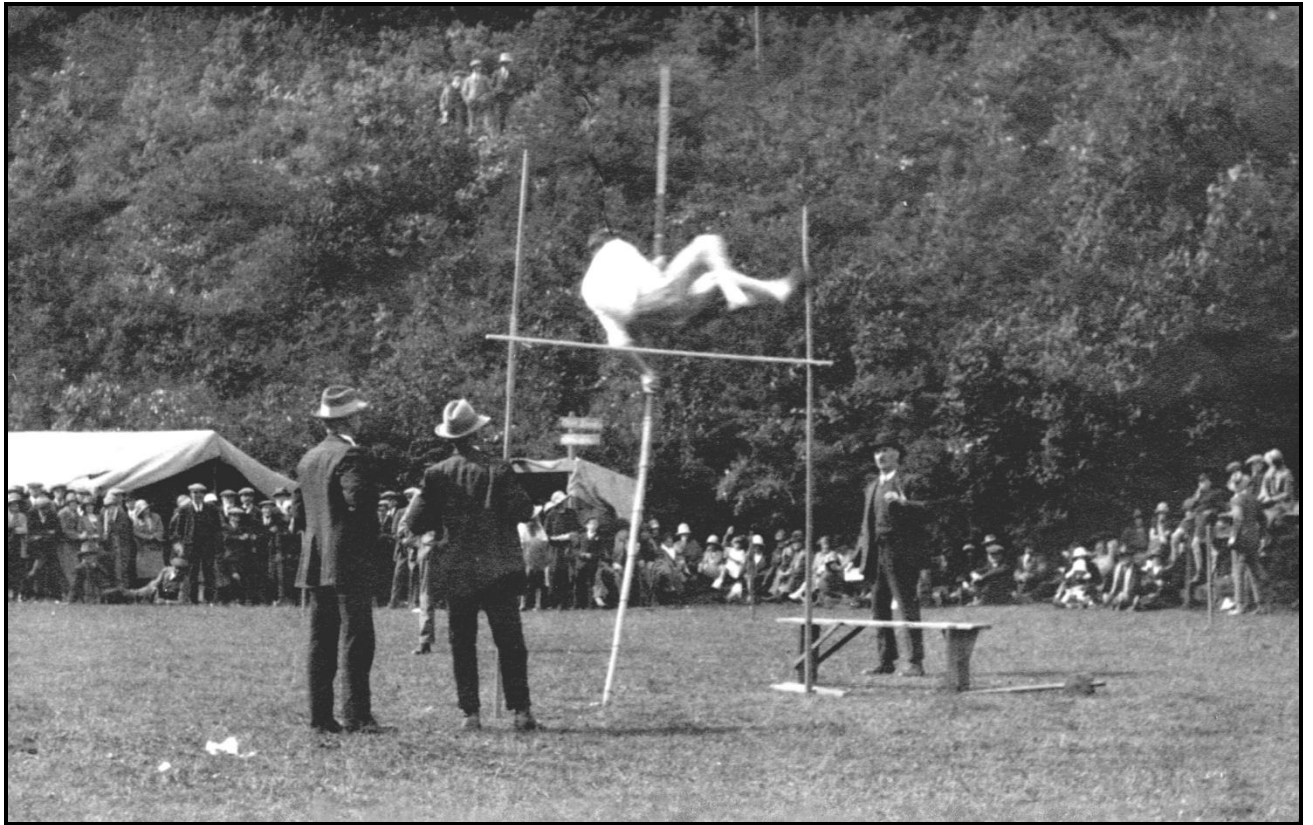


Rowleth Bottom Sports



Roleth Bottom Sports

Bygone Days in Swaledale - Melbecks Collection 2



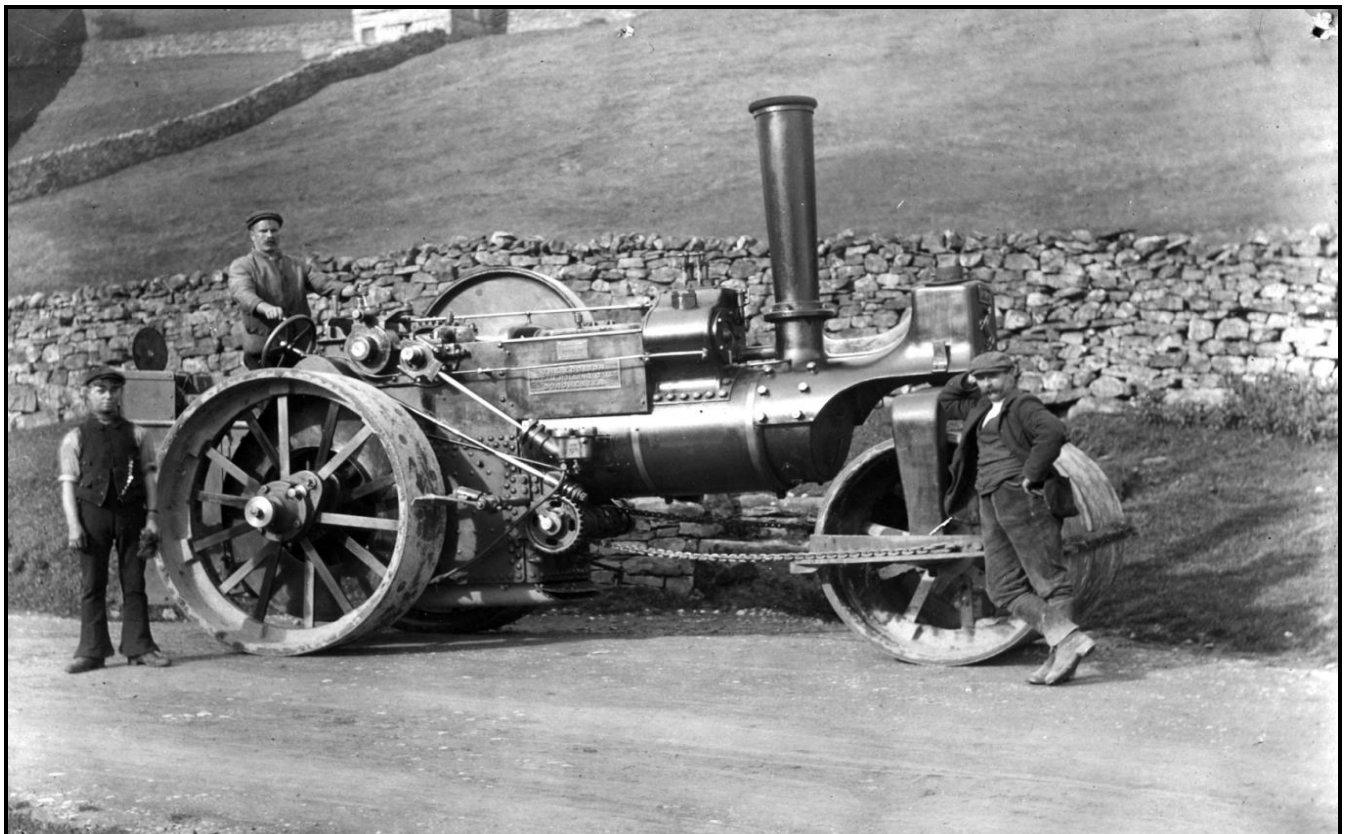
Rowleth Bottom Sports



Bygone Days in Swaledale - Melbecks Collection 2



Spice & Milk fancy dress



Road Roller Isles Bridge

Bygone Days in Swaledale - Melbecks Collection 2



Isles Bridge

