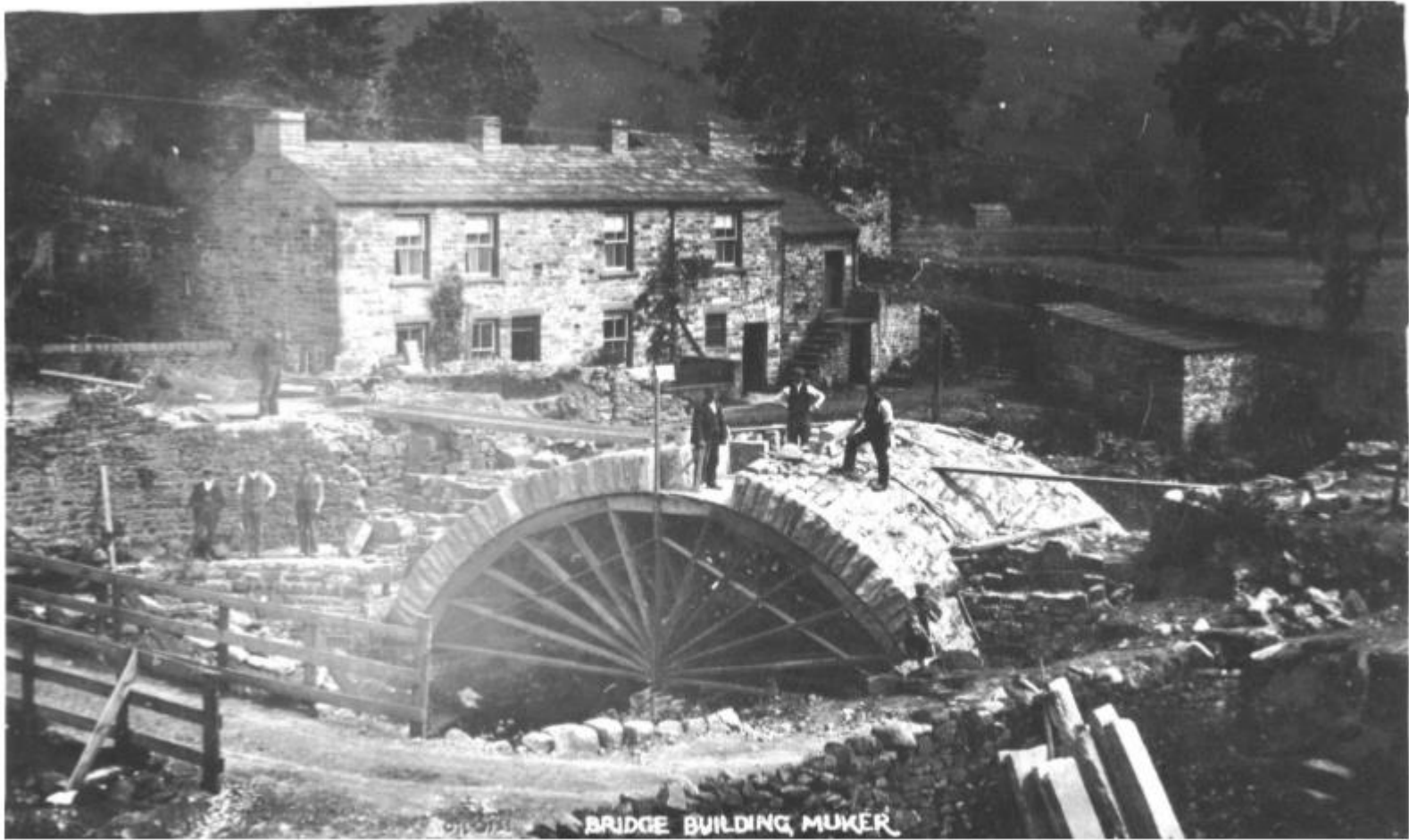




Reeth Road, late 19th century



Lord Rochdale's laundry awaiting collection



Construction of Muker Bridge



Muker Show, 1900



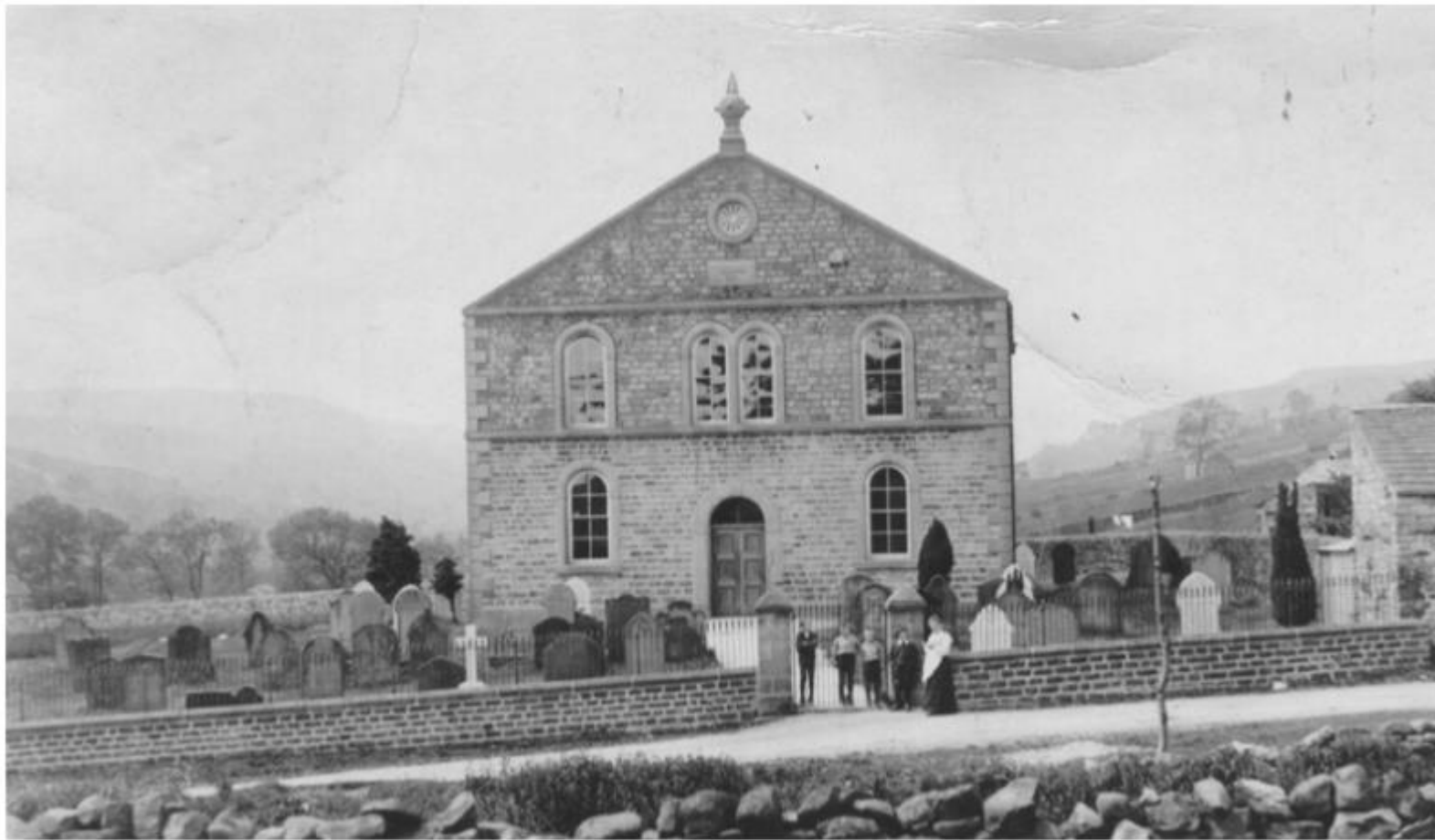
The last Percival bus to travel up Swaledale (c 1969/70)



The Post Office (1920s)



W Sunter's shop, late 19th century



Gunnerside Chapel, with newly built wall, late 19th century



John Robert Whitell, cobbler, collects shoes from Phyllis Barningham



Betsy Eglin, 1930s



Mary Jane (Polly) Rutter at the village water tap, early 1920s



Ruth Elizabeth (Ruliza) Thwaites and Nancy Batty, 1966 (photo from Northern Echo)



Jane Ann Calvert of Roof, leading Pikes



Margaret Batty, 1948



George Rutter, chatting over the garden wall at Greenleigh



Maggie and Jack Scott in the doorway of 3 High Row,
John Scott on "Ginny", with milk brought down from the cowhouse



William Rutter, James Rutter and son Ralph, cutting peat above Pot Ing (1941)



Jim Calvert, William Calvert and broadcaster Wilfred Pickles (1950)



Gunnerside Band, in Low Row:
(from right) Tom Batty, Jim Calvert, Ken Guy, Whit Guy, Cecil Moore



Midsummer c 1951



Fancy dress, 1953



Procession in support of the chapel, Midsummer



John Robert Whitell, cobbler, distributing presents



GUNNERSIDE SCHOOL, 1916

BACK ROW: Willie Alderson, David Calvert, Tom Cottingham, Jim Tiplady, Len Sunter, William Calvert, Will Sunter.

THIRD ROW: Elsie Sunter, Maggie Metcalfe, Mary Calvert, Gladys Hodgson, Ruth Calvert, Betty Parker, Nellie Metcalfe, Isabel Percival, Annie Appleton, Lily Batty, Maggie Rutter.

SECOND ROW: Stanley Heslop, Chris Waggett, John Milner, Walter Tiplady, George Milner, Jenny Rutter, Gwen Rutter, Betty Rutter, Margaret Heseltine, Arthur Rutter, Jack Rutter

FRONT ROW: James Parker, Tom Rutter, Myles Cottingham, William Cherry, George Shaw, George Sunter, Matt Cherry, ?? Hodgson, Bradbury Batty.



Gunnerside Football Team (circa 1950)

Back Row: Arnold Alderson, Dick Guy, Adam Thwaites, Jimmy Milner, Spensley Thwaites, Chris Alderson
Front Row: Bert Rutter, John Porter, Norman Rutter, Lodge Percival, William Sunter



Gunnerside Women's Institute, late 1960s: Margaret Calvert, Jenny Cherry,
Rachel Bell, Betsy Eglin, Hannah Milner, Phyllis Rutter, Molly Pearson, Miss Munton,
Nan Goldsborough, Gladys Batty, Mrs Brown