



Rome, Watertown and Ogdensburg Railroad

(N. Y. C. & H. R. R. Co., Lessee).

GRAND EXCURSION!

TO

UTICA & RETURN

ON THE OCCASION OF THE LAYING OF THE CORNER STONE OF THE NEW

MASONIC HOME!

THE GRANDEST MASONIC DEMONSTRATION EVER WITNESSED IN THIS STATE.

THURSDAY, MAY 21, 1891

SEVEN SPECIAL TRAINS

On Special Schedule Time, Assuring Punctual Service.

... TRAINS ...

Sixty-five coaches have been assigned to the Special Excursion Trains, giving ample accommodations to all who go. The Special Trains will start from different sections of the line, and run through to Utica without change. The system adopted to avoid confusion and mistakes is fully described on inside pages.

... TICKETS ...

For the round trip to Utica and return will be sold by R. W. & O. R. R. Ticket Agents at stations shown in time schedule on inside pages at

... HALF FARE ...

The number of tickets sold will be limited to the seating capacity of the coaches, thus avoiding crowding.

Trains will leave stations at convenient hours in the morning, arriving at Utica in ample time for

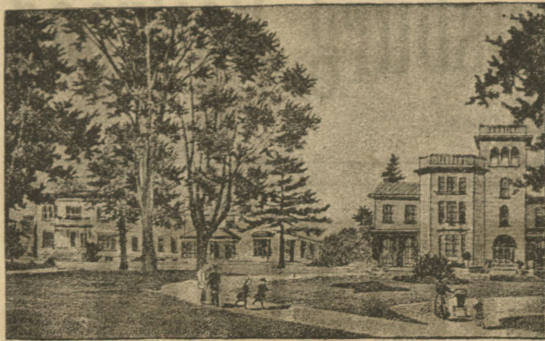
THE GRAND PARADE AND IMPOSING CEREMONIES

RETURN TRAINS.

Read carefully the information given on inside pages regarding **RETURN TRAINS**, and the system adopted to prevent mistakes, and you cannot fail to get the right train.

E. S. BOWEN,
General Manager.

THEO. BUTTERFIELD,
General Passenger Agent, Oswego, N. Y.



Residence of Roscoe Conkling.

THE GRAND EXCURSION.

The great event which furnishes the occasion for the excursion trains to be run Thursday, May 21, is the laying of the corner stone of the new Masonic Home at Utica. Without exception this will be the most notable event in the history of the Masonic fraternity in this State, and will bring together, at the lowest estimate, *forty thousand* Masons from different parts of the State. The grand parade will be magnificent and imposing, and especially attractive to visitors, whether masons or not. This circular is a complete guide for all who intend going to Utica on that day, and should be carefully read, as the information given is designed to obviate all confusion and mistakes which are likely to be made when large crowds are brought together.

THE CITY OF UTICA

is one of the most interesting cities in the Empire State. It occupies the site of old Fort Schuyler, which played an important role in the early history of the State. Lying in the beautiful Mohawk valley, and surrounded on nearly all sides by magnificent hills, it presents a landscape picture of marked beauty, whose charms are quickly felt by strangers and visitors. The city was incorporated in 1832, and has grown from the little hamlet of the last century to the large and busy city of to-day, with its forty-four thousand inhabitants.

The attractiveness of the scenery, and the many advantages of the site, attest the wisdom of the committee which made choice of Utica as the most fitting place for the Masonic Home. The visitor will find much to interest him in the city, with its broad and well-paved streets, shaded by handsome elms and maples. Genesee street, the main avenue, is the admiration of strangers, and, with its many palatial residences, has few peers in this country. Rutger street, with its marginal lawns and double rows of shade trees, is a most beautiful street, and will be traversed by the grand parade in its march to the Home grounds, passing Rutger place, the home of the late Roscoe Conkling.

All the streets are brilliantly lighted at night by electricity, the system employed furnishing the best obtainable results. Electric street cars of latest design are run in all directions, making readily accessible any part of the city, as well as the suburban villages, Whitesboro, New Hartford, New York Mills, Yorkville and Deerfield. The street pavement is substantial and well laid, asphalt, sandstone and granite being largely used, and rapidly replacing the cobble pavement formerly laid.

The public buildings are attractive and worthy of inspection. The Post Office is a large and imposing structure of pressed brick with sandstone trimmings, situated on Broad street, just east from Genesee street. The State Hospital for the Insane, a large and massive stone building, in the midst of spacious and attractive grounds, on Court street, in the western part of the city, is easily accessible by electric cars. The City Hall, built of Milwaukee brick, with its large square tower and clock, is a conspicuous object on Genesee street. The Young Men's Christian Association Building, corner of Bleeker and Charlotte streets, is one of the finest buildings of its kind in the State, thoroughly furnished and equipped with all apparatus for the peculiar work of the Association. Visitors are specially invited by the Secretary to inspect the building on the day the corner stone of the Home is laid. The City Library Building, on Elizabeth street,

furnishes quarters also for the Oneida Historical Society, with its large and valuable collection of relics and historical documents. Among the benevolent institutions may be mentioned the Old Ladies' Home, Old Men's Home, Orphan Asylum, St. Vincent's Society and Protectorate, St. Luke's Hospital, St. Elizabeth's Hospital, Faxton Hospital, and others. The churches are numerous and beautiful in design; among the most noticeable and striking church edifices are Grace and Calvary (Episcopal), First Presbyterian, Westminster, Park Baptist, Tabernacle Baptist, Dutch Reformed, St. John's and St. Joseph's (R. C.), and others.

The Parks are ornamental and nicely kept, the walks clean the lawns smooth, and adorned with flowers, shrubbery and fountains.

The manufacturing interests are many and varied, comprising extensive cotton and woolen manufactures, shoes, knit goods, Scotch caps, clothing, furniture, lead and iron pipe, pottery, steam engines and boilers, stoves, furnaces, varnish, pipe organs, stained glass, etc.

In and around the city are many pleasant drives. Forest Hill cemetery, two miles from the city, is beautifully laid out, and contains many magnificent monuments. The Conservatory, or "Chapel of Roses," at this cemetery, is unique, and attracts much attention not only at home but among foreigners. On a mound near the cemetery entrance rests the sacred stone once worshipped by the Oneidas. "On this stone the warriors had their ears slit to prepare them for battle; about it they held their council when



Proposed Soldiers' Monument, Utica.

they were going to fight, and on it they placed the scalps of their enemies when they returned from a successful war." From this stone the tribe derives its name, Oneida signifying "stone."

Utica is a city of much wealth and culture. Its educational system is second to none in the State. As the birthplace of great men, Utica has furnished, probably, more than its share of men who have been renowned in state or on the bench.

The city extends a warm welcome to all visitors who may come to witness the imposing ceremonies attending the laying of the corner stone of the new Masonic Home.

ORDER OF THE DAY.

The grand parade will form in Bagg's Square with the right resting on Whitesboro street. Upwards of eight thousand visiting masons will take part in the parade, forming a column of mammoth proportions. The visiting lodges will all be in line before noon and the parade will start at twelve o'clock promptly.

The line of march as arranged, will be up Genesee Street to Hopper Street, through Hopper and Rutger Streets to Kossuth Avenue, thence to Bleeker Street and through Bleeker to the Home grounds. The line will be reviewed on Rutger Street by the grand officers. The return march will be essentially the same, but may be varied somewhat to shorten the route and enable visiting masons to reach their trains in time. It is calculated that the march to the site of the Home will occupy about two hours.

The ceremonies at the grounds will begin promptly on arrival of the procession and will be concluded possibly within two hours after commencement. The oration at the laying of the corner stone will be delivered by Past Grand Master Frank R. Lawrence. The masonic brethren will be given the preference as to place in witnessing the ceremonies, and to this end the space enclosed by a rope fence will be reserved exclusively for them. During the exercises four selections will be sung by a chorus of twenty voices.

In the evening there will be a meeting in the opera house to be addressed by the Hon. Chauncey M. Depew.

TRAIN ARRANGEMENTS.

The stations on the line have been grouped into seven (7) sections, designated by different colors, and from each section a special train will run on special schedule time, as shown on opposite page.

BLUE Section.—Train starts from Massena Springs, taking in all stations to Philadelphia, inclusive: Heuvelton and Rensselaer Falls also included.

YELLOW Section.—Train starts from Ogdensburg (going via Morristown) and Clayton, taking in all stations to Sterlingville, inclusive.

RED Section.—Train starts from Cape Vincent and takes in all stations (including Watertown) to Richland, inclusive.

BROWN Section.—Train starts from Oswego, taking in all intermediate stations to Rome.

WHITE Section.—Train from Phoenix, Fulton and Oswego, going via Oswego.

PINK Section.—Train starts from Ransomville taking in intermediate stations to Hannibal, inclusive.

GREEN Section.—Train starts from Carthage, taking in all intermediate stations to Utica.

The tickets sold at the different stations will be of the same distinctive colors as are named above to designate the different sections.

All trains will arrive in Utica in ample time for the grand parade.

RETURNING TRAINS.

The large number of trains which will be dispatched from the Utica depot, when the crowd is rushing to return home, would confuse and perplex most persons. To obviate all confusion and liability to mistakes at such a time, the above "color scheme" has been adopted.

Each special returning train will be designated by large cards of the different colors chosen for the different sections. Particular attention is called to this system, which, if carefully followed, will prevent all trouble. If any passenger is in doubt as to his train or the color which marks it, he has only to look at his ticket, which will show at once the color of the cards which indicate his train. Reference to the time-table will show the leaving time of the different trains.

TICKETS.

Tickets sold at stations named in time-tables will be good going and returning only on the special trains on Thursday, May 21. Tickets sold at R. W. & O. stations will be of the different colors chosen to designate the sections into which the several stations have been grouped, to facilitate the running of the special trains. The color of a ticket thus serves as a guide to its holder, for it indicates at a glance the color of the card affixed to the train he must take at the Utica depot when he leaves for home. For example, a passenger holding a *red* ticket takes the train which shows *red* cards; one holding a *green* ticket takes train marked with *green* cards, and so for the rest.

At stations not named in the time-table, tickets will be sold only for regular trains, as special train service has not been arranged for such stations, either going or returning. Tickets sold at such stations will be good to go and return on regular trains. For full particulars, apply to ticket agents. The colored card scheme applies only to special trains.

The rate for excursion tickets from any station on the line of the R. W. & O. to Utica and return will be one fare for the round trip; that is, the rate will be just

The number of tickets sold will be limited strictly to the seating capacity of the coaches, thereby giving comfortable accommodations to all who go.

The task of providing refreshments for the many visitors who will pour into Utica to see the corner stone ceremonies, will not be an easy one. The arrangements, however, for feeding all who come are very complete and no one need go hungry. The hotels, restaurants, eating houses and cafes will make bountiful provision on a grand scale to cater to all their patrons. Besides these, other enterprises will be conducted by the ladies of several of the churches, to furnish dinners and lunch in attractive style and at reasonable rates. The most prominent enterprise of this kind is the very complete arrangement of the Woman's Exchange to meet the demand. The ladies of the Woman's Exchange have fitted up two large and commodious stores, No. 86 and No. 113 Genesee street as refectories, and will offer the very best of service to all who patronize them. Everything

will be very nice and served under the immediate supervision of the ladies. First-class dinner will be served at seventy-five (75) cents each. The best and choicest refreshments will also be served at lunch counters at very reasonable prices. Dinner will be ready at 11.00 o'clock a. m. and served until 7.00 p. m. or until there is no longer a demand. Organized bodies or lodges will be specially cared for, and arrangements can be made *in advance* for their accommodation, by corresponding with Miss A. Louisa Lynch, President, Woman's Exchange, No. 19 Plant St., Utica, N.Y.

The ladies will serve dinner to organized bodies after the ceremonies are over, if desired. All arrangements for large bodies or parties should be made through the President as before noted. The nearness of these stores to the depot gives them great advantage in point of convenience, as visitors can get their dinner immediately after arrival, without loss of time, and be ready for the grand parade.

Bagg's Hotel, Bagg's Square, near depot. D. M. Johnson, proprietor. \$4.00 per day.
Butterfield House, Genesee street, next to Grace Church. T. R. Proctor, proprietor. \$2.50 to \$3.00 per day.
St. James Hotel, Whitesboro street. Smith & Patton, proprietors. \$2.00 to \$2.50 per day.

Metropolitan Hotel, Fayette street. Davis & Sherlock, proprietors. \$2.00 per day.
Clinton House, Bleecker street. G. A. Davis, proprietor. \$1.25 per day.

No. 86 Genesee street, right side, opposite First National Bank.
No. 113 Genesee street, left side, between Catharine street and canal bridge.
Dinner, 75 cents each; lunch at reasonable prices. Arrangements for organized bodies can be made in advance, by corresponding with Miss A. Louisa Lynch, President Woman's Exchange, 19 Plant street, Utica, N. Y.

Restaurants and dining-rooms will be found on Genesee, John, Fayette, Bleecker and other streets.

A special excursion agent will accompany each special train, and look after the comfort of passengers. These agents will give all information desired, and render any service in connection with the excursion that may be required of them. Ladies without escorts will receive special attention, and may approach these agents with every assurance that they will receive respectful and courteous treatment.

Excursion Rates	STATIONS.	TIME OF SPECIAL TRAIN.	TIME OF SPECIAL TRAIN.	TIME OF TRAIN 202.	Excursion Rates	STATIONS.	TIME OF SPECIAL TRAIN.	TIME OF SPECIAL TRAIN.	TIME OF SPECIAL TRAIN.	Excursion Rates	STATIONS.	TIME OF SPECIAL TRAIN.	TIME OF SPECIAL TRAIN.	TIME OF SPECIAL TRAIN.
		YELLOW					BLUE.							PINK.
\$4.00	Lv. Ogdensburg...	5.00 a.m.			\$3.20	Lv. Gouverneur...	6.50 a.m.			\$2.20	Lv. Williamson...			6.32 a.m.
3.75	" Morristown...	5.23 "			2.80	" Antwerp...	7.20 "			2.10	" Sodus...			6.48 "
3.55	" Brier Hill...	5.31 "				Ar. UTICA ...	11.05 "			2.10	" Wallington...			6.56 "
3.40	" Hammond...	5.48 "								2.00	" Alton...			7.01 "
3.30	" So. Hammond...	5.58 "			\$3.20	Lv. Cape Vincent...	7.00 a.m.			1.85	" Rose...			7.15 "
3.05	" Redwood...	6.16 "			3.05	" Rosiere...	7.10 "			1.85	" Wolcott...			7.27 "
2.85	" Theresa...	6.30 "			2.95	" Three Mile Bay...	7.20 "			1.75	" Red Creek...			7.43 "
3.30	" Clayton...	5.55 "			2.85	" Chaumont...	7.28 "			1.75	" Sterling...			7.55 "
3.05	" Lafargeville...	6.10 "			2.70	" Limerick...	7.41 "			1.75	" Sterling Valley...			8.04 "
2.95	" Orleans Corn'rs...	6.17 "			2.60	" Brownville...	7.51 "			1.75	" Hannibal...			8.12 "
2.80	" Theresa Junct...	6.40 "			2.50	" Watertown...	7.50 "					BROWN.	WHITE.	
2.60	" Philadelphia...	6.55 "			2.35	" Rices...	8.21 "			1.75	Lv. Phoenix...	7.00 a.m.		
2.55	" Sterlingville...	7.02 "			2.20	" Adams Centre...	8.32 "			1.75	" Fulton (Broadway)...	7.25 "		
				GREEN.	2.10	" Adams...	8.40 "			1.75	" Fulton (N.Y.O. & W.)...	7.25 "		
2.50	" Black River...			6.25 a.m.	1.95	" Pr'pont Manor...	8.52 "			1.75	" Oswego...	7.30 a.m.	8.00 a.m.	
2.50	" Felts Mills...			6.30 "	1.90	" Mannsville...	8.57 "			1.75	" Scriba...	7.48 "		
2.45	" Great Bend...			6.35 "	1.75	" Sandy Creek...	9.08 "			1.75	" New Haven...	7.57 "		
				GREEN.	Ar. UTICA ...		11.15 "			1.75	" Mexico...	8.07 "		
2.25	" Carthage...	7.05 a.m.	6.50 "							1.75	" Sand Hill...	8.18 "		
2.15	" Deer River...	7.14 "			\$3.80	Lv. Ransomville...			PINK.	1.70	" Pulaski...	8.30 "		
2.00	" Castorland...	7.25 "			3.80	" Wilson...			3.00 a.m.	1.60	" Richland...	8.45 "		
1.80	" Lowville...	7.42 "			3.80	" Newfane...			3.12 "	1.45	" Albion...	8.55 "		
1.55	" Glendale...	8.00 "			3.80	" Newfane...			3.24 "	1.25	" Kasoag...	9.07 "		
1.35	" Lyons Falls...	8.16 "			3.70	" Hess Road...			3.31 "	1.15	" Williamstown...	9.13 "		
1.25	" Port Leyden...	8.23 "			3.60	" Somers...			3.42 "	1.00	" West Camden...	9.23 "		
1.05	" Boonville...	8.40 "			3.50	" County Line...			3.51 "	.85	" Camden...	9.34 "		
.90	" Alder Creek...	8.57 "			3.40	" Lyndonville...			4.00 "	.75	" McConnellsv'll...	9.44 "		
.65	" Remsen...	9.13 "			3.40	" Carlyon...			4.08 "	.65	" Taberg...	9.50 "		
.60	" Prospect...	9.20 "			3.30	" Waterport...			4.14 "		Ar. UTICA ...	10.15 a.m.	10.30 a.m.	11.10 a.m.
.50	" Trenton...	9.26 "			3.30	" Carlton...			4.21 "			10.40 "	10.55 "	11.35 "
.40	" Holland Patent...	9.35 "			3.20	" E. Carlton...			4.26 "					
.35	" Stittville...	9.40 "			3.10	" Kendall...			4.37 "					
.20	" Marcy...	9.51 "			3.00	" E. Kendall...			4.42 "					
	Ar. UTICA ...	10.20 am	10.05 "	9.50 "	3.00	" Hamlin...			4.51 "					
		BLUE.			2.95	" E. Hamlin...			4.57 "					
\$4.75	Lv. Massena Sp'gs...	4.35 a.m.			2.90	" Parma...			5.04 "					
4.35	" Norwood...	5.10 "			2.85	" Greece...			5.11					

👉 Special Return Trains will have colored cards hanging on the coaches indicating destinations. Excursion tickets will be of the same colors, showing at a glance, by the color, the proper train to take.

WHITE—7.00 p. m., For Oswego only; makes no stops.
PINK—7.15 p. m., For Hannibal, Ransomville and intermediate stations.
RED—7.30 p. m., For Cape Vincent, Sandy Creek and intermediate stations.
BROWN—7.45 p. m., For Taberg, Scriba and all intermediate stations.

BLUE—8.00 p. m., For Massena Springs, Antwerp and intermediate stations, including Heuvelton and Rensselaer Falls.
GREEN—8.15 p. m., For Marcy, Black River and all intermediate stations.
YELLOW—11 p. m., For Ogdensburg, Clayton, Sterlingville & intermediate stations.

READ THIS! Look at your ticket and see what color it is; then note the leaving time of your train, as shown above. The train will be indicated by cards of the same color affixed to the coaches. Observe this rule and you will not get left or take the wrong train.



Rome, Watertown and Ogdensburg Railroad

(N. Y. C. & H. R. R. R., Lessee.)

GRAND * EXCURSION TO UTICA AND RETURN ON THURSDAY, MAY 21st, 1891,

FROM STATIONS ON THE LINE OF THE R. W. & O. R. R.

LAYING THE CORNER STONE OF THE MASONIC HOME!

The most noteworthy event in the history of Masonry in this State.

TEN THOUSAND MASONS IN LINE!

The Grand Parade will also include several Military Companies and

HUNDREDS OF BRASS BANDS!

SEVEN * SPECIAL * TRAINS!

Will be run from different sections of the line, going and returning the same day.

SIXTY-FIVE COACHES! NO CROWDING! ROOM FOR ALL!

Complete arrangements for the entertainment of all visitors. Hotels, restaurants and eating houses will supply the wants of all patrons. The Woman's Exchange will serve refreshments, luncheon and dinners to all who apply. For particulars see inside pages.

RETURN TRAINS.

Read carefully the information given on inside pages in regard to RETURN TRAINS and the system adopted to prevent mistakes.

FULL PARTICULARS ON INSIDE PAGES.