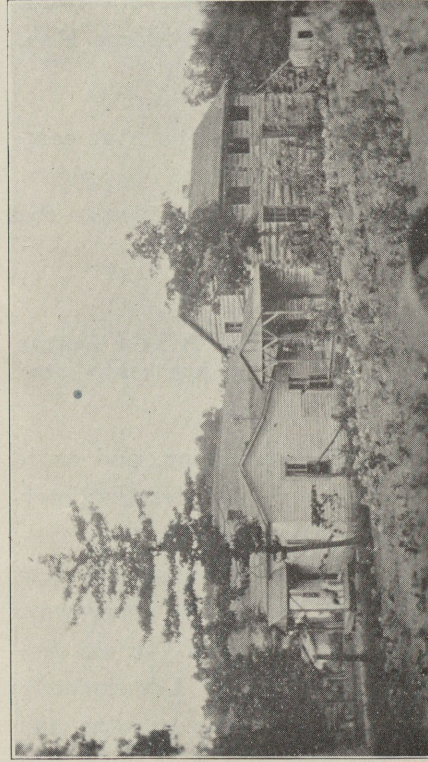
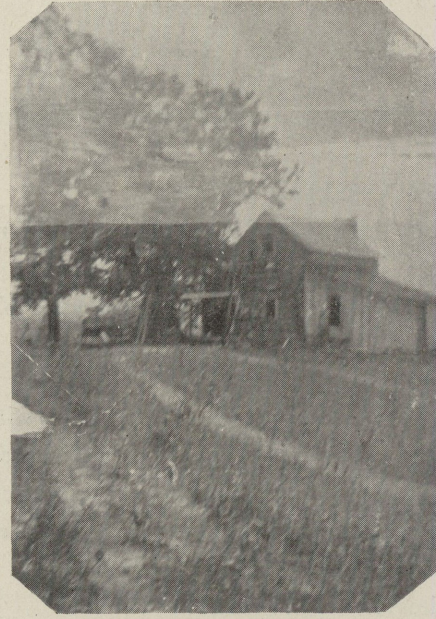
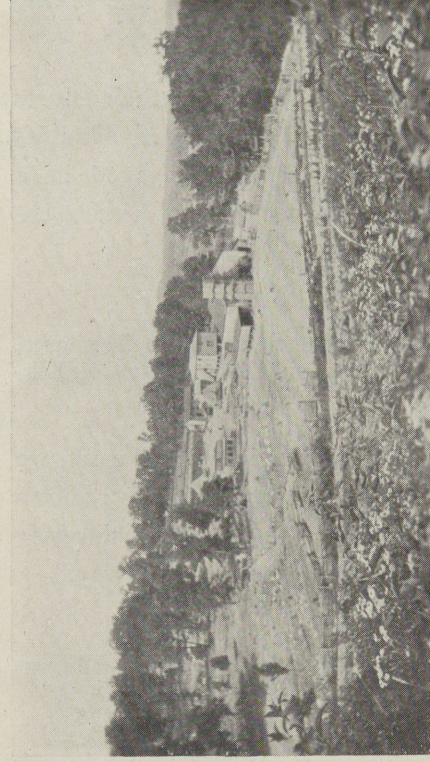


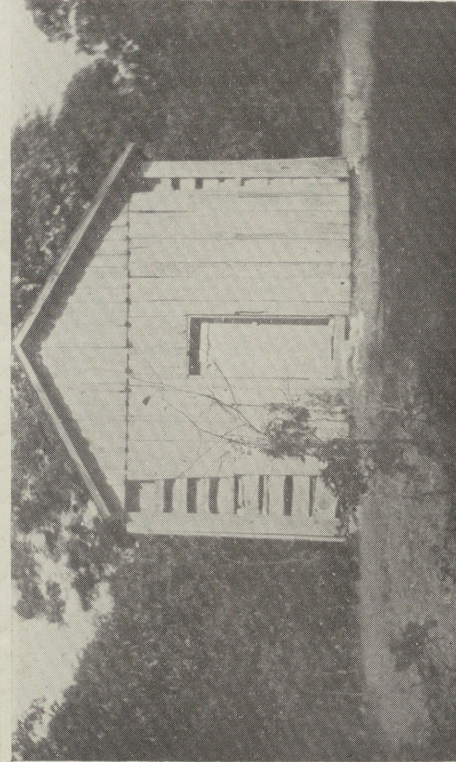
Our humble beginning on Busy Bee Farm,
1918, and where we got burnt
out January 11, 1920.



Our next step, in addition to a barn, corn crib and tenant cottage, showing
improvements made during the year 1920. Though we were struck by a
tornado May 30, 1920, the same year of the fire and lost a new building a
few days after the roof was put on.



A bird's eye view, showing the new improvements made this year up to
July 15, 1922, including a silo 12x28, a new dormitory and a smokehouse.



This antiquated structure, where the colored children went to school 3
months a year, was our only excuse for a school house. But through the kind
assistance of the school board of Breckinridge County and Mr. Julius Rosen-
wald of Chicago a \$2,000.00 modern school building is now in process of
construction and will be completed by September 1st.



The personification of modesty, innocence,
gentleness and affection. One only of the 72
we now have in charge. Who could refuse
such as these, the crumbs for which we plead?



LOST ON THE DESERT.

By God's Grace, this one and over 300 others have been found by the National Home Finding
Society and brought into the sheepfold. But here in big-hearted Christian America, with an abund-
ance, and enough to spare, thousands of little colored children, homeless, dependent, destitute and
neglected are perishing and suffering worse than physical death.
For these we do, and shall forever, plead. And we only ask for the crumbs.

National Home Finding Society, O. SINGLETON, Gen'l Supt., 1716 W. Chestnut, LOUISVILLE, KY.

