

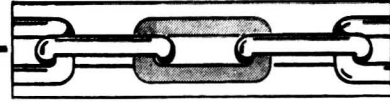
The **L I N K**



WAGNER COLLEGE ALUMNI NEWS

A U T U M N E D I T I O N

THE LINK



THE ALUMNI ASSOCIATION

Werner Johnson '41, president; Harold Matthius, Jr. '50, vice-president; Eleanor Ayoub '44, secretary; Herman A. Meyer '11, treasurer. Members of the Executive Committee: Joseph B. Flotten '26, Wilbur H. Sterner '42. Alumni Trustees of the College: Joseph P. Monge '34, Henry Endress '38. Alumni Members, Board of Athletic Control: James Gilmartin '50, Dr. Albert Accettola '41. Alumni Members, College Council: Chester Sellitto '50, Elsie Schatz Love '50.

ALUMI CLUBS

Brooklyn: Fred Holsten '50, president; Charlotte Tippens, secretary. Connecticut: Robert Heydenreich '32, president; Eleanor Dossin '40, secretary. Hudson Valley (N. Y.): John Klahn '32, president. Long Island: Edwin Blaauw '50, president; Helen Deuschle Niederhauser '50, secretary. Mid-State (N. Y.): Harold Hammond '42, secretary; Walter Boecher '43, treasurer. Northern New Jersey: Richard Chamberlain '50, president; John DeNicola '52, vice-president; Janet Wannemacher Stevens '52, secretary. Nursing School Alumnae: Mary Ann Nelson '51N, president; Gladys Wichman Fischer '50N, vice-president; Dorothy Harris '55N, secretary; Isabelle Maiorano Loreda N48, treasurer. Rochester: Helmut Dietrich '45, president; Elmore Hoppe 30, vice president, Ruth Heckler '54, secretary. Staten Island: Ulysses Ciolini '53, president; Barbara Praisner '55N, secretary; Fred Hurst '50, vice-president; H. Rodney Whitney '55, treasurer. Washington (D. C.): Donald Haber '48, president; Jason Horn '42, vice-president; Helen Sandberg Swartz '42, secretary. Westchester (N. Y.): Lloyd Rice '40, president. Western New York: Carl Prater '31, president; John Strodel '24, vice-president; Carl Nuermberger '54, secretary.

Fred Olson '54 Editor



CORONATION SCENE — Queen Jeanette Lynch with her attendants (left to right) Lillian Beneforti, Crownbearer Lynne Accettola and Ursula Arend.

Tom Young Cover Design

VOLUME IX

FALL 1956

NUMBER 1

In This Issue

SPACE FOR GROWTH	3
ABOUT THE DEVELOPMENT PROGRAM	4
LAST DOWN, GOAL TO GO	5
LOYALTY FUND STATISTICS	5
WORDS PLUS DEEDS	6
APPOINTMENTS	7
WHEN IS A FIRST A FIRST?	7
HOMECOMING WEEKEND	8
IT HAPPENED ON THE HILL	12

Departments

SPORTS	11	NAMED AND TAMED ...	15
NEWS BRIEFS	13	CAMPUS CALENDAR ...	16

THE LINK is published four times a year by the Wagner College Alumni Association. Editorial Office: Public Relations Office, Wagner College, Grymes Hill, Staten Island 1, New York.



Dr. Delo and John Fisher, Project Manager, survey progress on the new men's dormitory-dining hall.

Space for growth

*An Address by Dr. David M. Delo,
President of Wagner College,
Opening Convocation, September, 1956*

The primary purpose of a college is to provide space for growth — particularly for growth of the creative qualities of the human spirit.

Space is a concept difficult to visualize. We may think of it in terms of a campus, or of rooms in a dormitory. Or one might imagine the limitless distances of the cosmic universe; the expanse of the ocean; or the sea of grass and wheat on the High Plains. All of these spaces are different — but they have one thing in common — extension in all directions; in most, an aura of stretching out to encompass far distances.

But there is another kind of space — not so tangible, not so readily understood — the space of personal growth, whether it be of the mind or of the spirit. The task of the college is to enable and to assist each student to enlarge his individual "space" so that growth not only occurs, but continues.

To state the premise in another way, a college furnishes the energy and the proper climate for expansion of each individual's potentialities. In words of Harry Overstreet it is a "creative force exerting a creative influence."

One hundred and fifty years ago an army of axemen were destroying the great forest which then stretched from the Alleghenies to the Mississippi River. They were carving out farms — growing space — where men and women might build homes and prosper. Likewise, these pioneers were beginning to create colleges west of the mountains — and in them to provide growing space for the minds of coming generations.

(Continued on next page)

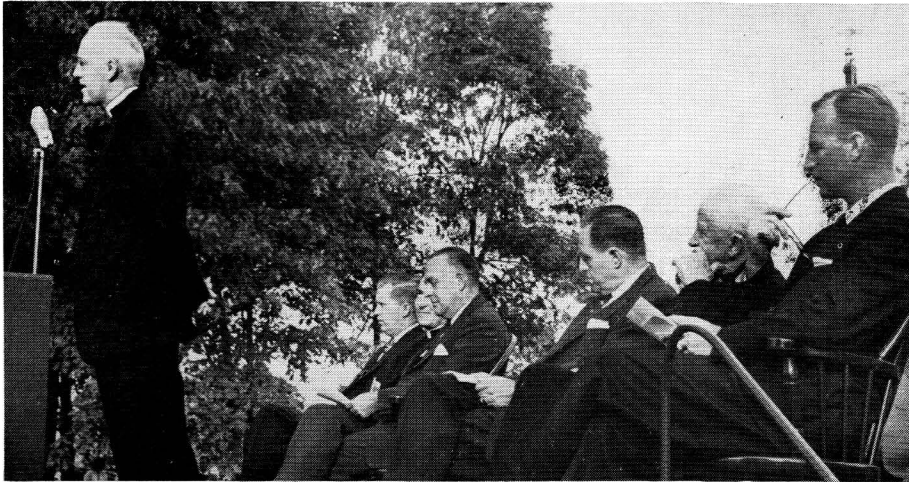
"We begin a

decade of development - -

a calculated and continuous

effort to extend and to stretch

our space for growth."



Guests and college officials are pensive as they hear the Rev. Franklin Schweiger, member of the Board of Education of the New York Synod, speak at the dormitory-dining hall groundbreaking.

To exert the creative force which is its destiny, a college, too, must create its own "space to grow." Its nature and scope depend on the foundations erected by its past; on effective and constructive use of its present; on the clarity and confidence with which the future is faced at each stage of development.

The foundations of our past were erected by men — by devoted and dedicated individuals who struggled through lean years to transform dreams into reality. Thus at Wagner alumni look back with respect and affection to such men as Dean William Ludwig who served so faithfully for three decades; to Dr. Lee Davidheiser, who first established our fine chemistry department; or to Dr. DeWalsh whose teaching personality left an impression on many generations of students. These are only three of many whom I could name, who, with Dr. Frederic Sutter as leader have created "Wagner's 'space to grow.'"

The fact that Wagner has continued to exert an increased creative force is cogent evidence that their work has been effective and lasting.

Every individual, too, creates and enlarges his own "space for growth." Each of you, when you entered college, brought your "space" with you. Its scope and character resulted from the sum total of your life's experiences. Your college career enlarges this space, dependent on the direction and nature of your own efforts. New ideas, new knowledge, new spiritual concepts, new and satisfying relationships with your fellows — all lead to extension of your personal growing space. Such stretching of your mind and spirit is not painless — it often is fraught with many difficulties. But the end result of four years of such exercise will be enormously fruitful. For not only has your personal space been greatly broadened — the habit of constant reaching out for the new should have been so formed that it

About The Development Program

AS PRESIDENT DELO points out above, devoted and dedicated men and women have always worked hard to help Wagner College "transform dreams into reality." Now a Development Office has been added to assist with these efforts.

Today with the rapid increase in student-age population (which is expected to double college enrollments by 1970), progressive colleges throughout the nation are realistically facing the need to make plans for improvement and expansion far in advance. In fact, more than 400 colleges are now embarked on long-range development programs.

Wagner College joins this group with faith and courage, confident that Wagner alumni will give their support and encouragement as they have in the past.

continues for a lifetime.

If this disciplined expansion of your individual growing space depended on your efforts alone, the task would be difficult indeed. But in this process you enjoy the wise guidance of a faculty which is interested in each of you as a person — growing, learning, and maturing person. The maximum extension of your growing space will be dependent, then, not only on your own efforts, but on the judicious and wise efforts of your teachers.

But space is not static. We are told that the universe is expanding; that the earth is shrinking; that the oceans are enlarging. Whether the "space for growth" be that of a college or a single person, the cessation of expansion leads only to contraction.

Thus, if a college is to expand constantly the growing space of each student, it too must continually create new space of its own. This does not necessarily mean new buildings, although these may be necessary if enrollment is increasing. It may involve new educational equipment, visual aids, or better salaries for the faculty.

The heart of such institutional expansion lies in yet another factor — the provision of growing space for the teacher. Teaching involves a mental-spiritual reaction between two individuals — teacher and student. The true teacher is one whose personal growing space is constantly expanding. He plants the seed from which great aspirations grow. He stands as an example to be followed, and draws the student after him with the zeal of his interest and the integrity of his effort. His own personal stretching process is thus duplicated by the student.

If he is to extend his "space for growth," the teacher must constantly expand his scholarly horizons. He must be able to attend meetings of professional societies where contacts and discussions with professional colleagues sharpen his interest and broaden his knowledge. He must have adequate facilities for continuing study — for research if time and interest permit. His teaching schedule should be sufficiently modest to allow time for scholarly work — and he should then be expected to perform it. And, finally, he must receive remuneration commensurate with the calibre of his professional contribution to the life of the college.

(Continued on page 15)



Harold Matthius, standing, and John Gross, chairman of the 1957 Loyalty Fund campaign, scan literature to be used in the '57 drive.

Last Down - Goal To Go

The 1956 Loyalty Fund Drive is just about over. This year our goal was \$10,000. As of November 21 we had received a total of \$9,000.85 from 1127 contributors which represent 38% of the total alumni body. This shows an average gift of \$7.99.

Just before this issue went to press, we sent a *final* appeal to all non-contributors, entitled, "Third Down — Goal to Go". It is our hope that these alumni will pull a "quarterback sneak" on the *last* play, and put us across the goal line. Time is Short! But, we have only a short way to go.

To review the operation and the mechanics of the Loyalty Fund Campaign would take several pages: however, for those who did not actively participate in the campaign, I would like to give a brief summary. Up to this time, over 8000 pieces of mail have been sent out, more than 200 alumni worked as chairmen and solicitors — all the way from Grymes Hill to Walnut Creek, California. It is because of these faithful people that I am able to report that this year we are well ahead of last year.

Very soon your new chairman, Mr. John Gross '35, will be calling upon you or writing to you asking your help in the 1957 campaign. I sincerely hope that you as an alumni body will give him an overwhelming hand. You must, because the success of any campaign does not depend on any chairman, but on the many, many people who give so freely of their time.

Once again, a personal thank you to those who have worked and those who have given, and a humble request to those who have not — Please — now is the time.

Harold G. Matthius '50

Chairman 1956 Drive

LOYALTY FUND DRIVE as of November 9, 1956

Class	Living Members ¹	1955		1956		Average Contribution 1956
		Number of Contributors	Amount	Number of Contributors	Amount	
1892	1	1	\$ 5.00	—	\$ —	\$ —
1893	2	2	15.00	2	20.00	10.00
1894	4	3	77.00	2	52.00	26.00
1895	1	—	—	—	—	—
1896	0	—	—	—	—	—
1897	2	2	15.00	1	10.00	10.00
1898	2	1	1.00	1	2.00	2.00
1899	0	—	—	—	—	—
1900	1	—	—	—	—	—
1901	0	—	—	—	—	—
1902	2	1	15.00	1	15.00	15.00
1903	2	1	5.00	1	5.00	5.00
1904	2	2	15.00	2	15.00	7.50
1905	2	2	20.00	2	18.50	9.25
1906	0	—	—	—	—	—
1907	2	—	—	—	—	—
1908	3	1	5.00	1	5.00	5.00
1909	2	2	20.00	1	10.00	10.00
1910	2	1	10.00	2	15.00	7.50
1911	5	1	12.00	1	15.00	15.00
1912	2	1	15.00	1	15.00	15.00
1913	2	2	15.00	2	15.00	7.50
1914	5	1	5.00	1	5.00	5.00
1915	2	2	15.00	2	15.00	7.50
1916	2	—	—	—	—	—
1917	2	1	10.00	1	10.00	10.00
1918	6	3	45.00	2	40.00	20.00
1919	3	1	5.00	—	—	—
1920	2	1	25.00	1	15.00	15.00
1921	3	2	30.00	1	25.00	25.00
1922	3	2	10.00	1	5.00	5.00
1923	5	2	115.00	1	15.00	15.00
1924	3	3	65.00	3	65.00	21.67
1925	5	2	20.00	3	25.00	8.33
1926	6	2	30.00	3	35.00	11.67
1927	8	3	31.00	4	39.00	9.75
1928	9	7	95.00	6	93.00	15.50
1929	8	6	85.00	7	102.50	14.64
1930	11	5	53.00	5	54.00	10.80
1931	18	10	95.00	11	110.00	10.00
1932	16	9	88.00	8	90.00	11.25
1933	11	7	60.00	5	60.00	12.00
1934	17	8	255.00	8	265.00	33.13
1935	21	13	110.00	14	130.00	9.29
1936	26	10	104.00	7	87.00	12.43
1937	30	14	140.00	11	100.00	9.09
1938	32	16	132.00	14	140.00	10.00
1939	37	19	197.50	19	212.50	11.18
1940	48	30	218.00	22	240.00	10.91
1941	45	25	406.50	28	348.00	12.43
1942	48	26	283.50	23	237.00	10.30
1943	54	33	260.50	29	226.00	7.79
1944	46	21	129.50	22	162.00	7.35
1945	38	22	147.50	21	155.00	7.38
1946	48	25	137.00	21	119.00	5.67
1947	47	18	98.00	19	120.95	6.37
1948	96	46	332.00	40	364.50	9.11
1949	154	86	525.50	74	472.00	6.38
1950	283	147	897.50	131	921.00	7.03
1951	216	114	652.50	111	719.00	6.48
1952	217	118	662.00	115	617.50	5.37
1953	187	89	517.50	88	601.00	6.83
1954	177	81	454.50	85	500.90	5.89
1955	203	—	—	86	484.50	5.63
1956#	228	3	11.00	9	35.00	3.89
Former						
Students	382	28	212.50	18	108.00	6.00
Honoraries %	70	17	385.00	16	555.00	34.69
Total	2937	1101	\$8,395.50	1116	\$8,935.35	\$ 8.01

* With known addresses

Not solicited until November 1956

% Does not include regular graduates who later received honorary degrees

*Two generous gifts and a \$3,000 pledge
help meet the challenge of furnishing the new dormitory*

WAGNER'S ALUMNI, loyally backing words with deeds, have pledged \$3,000 from the 1957 Alumni Loyalty Fund budget of \$10,900 to provide furnishings for the new men's dorm, now under construction. In addition, two alumni have made generous personal gifts to the Dormitory Fund.

The words came from Alumni Prexy Werner Johnson, '41, when he told President David M. Delo and those gathered for the dormitory ground-breaking ceremony in mid-September: "I'm sure the alumni will want to have a part in helping the College furnish this fine new building."

To La Mar J. Smith, '47, president of La Mar's Restaurant, Cleveland, Ohio, goes the honor of being the first alumnus to contribute the total cost of furnishing a dormitory room. His generous pledge of \$500 for this purpose was made to President Delo in mid-November.

For Smith (whose mother, Mrs. Luther J. Smith, is a trustee of the College) the occasion was reminiscent of his student days when he headed the first Student Loyalty Fund in 1946—47. And just as he did at that time, he again pledged his personal support to help the College provide quality education for more students.

The Dormitory Fund, officially started in November, is headed by a committee of College trustees. The Rev. Dr. Frederic Sutter, '94, serves as honorary chairman and Dr. Andrew G. Clauson, new treasurer of the Board and a partner in the accounting firm of Bayer & Clauson, New York City, is the chairman. Other members are the Rev. Dr. John F. Bauchmann, '23, Joseph P. Monge, '34, Waldemar J. Neumann, and the Rev. Dr. George R. F. Tamke, '18. President Delo represents the college faculty and staff.

Goal of the committee is to raise \$80,000 before completion in September, 1957. Major gifts will be solicited from individuals and organizations to provide furnishings for any one or more of the many resident rooms, the lounge, dining hall, and other facilities.

The fund total now stands at \$4,338, not counting the \$3,000 which is expected to be realized through the '57 Loyalty Fund. Alumni may support this vital project by their gifts to the Loyalty Fund and by sending names of prospective major donors to President Delo or to members of the committee.

WORDS *plus* DEEDS *equal* ONE FURNISHED ROOM

Johnson's statement was soon backed by the action of the Executive Committee at meetings held in September and October. As reported in the summer issue of *The Link*, the 1957 Loyalty Fund budget includes \$3,000 as a direct gift to the College, for assignment by the college trustees. The Executive Committee, through Fund Chairman John Gross, '35, requested that this sum be assigned for the dormitory, and the college trustees agreed.

"Now," remarked Chairman Gross, "we face the challenge of meeting our '57 budget so that this \$3,000 will actually be available."

To Reginald J. Kennedy, '56, of Brooklyn goes the honor of being the first alumnus to make a direct contribution to the Dormitory Fund. Kennedy turned over his dormitory deposit plus an additional gift after completing his work for graduation in February.

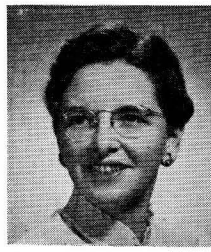


LAMAR J. SMITH, '47, first alumnus to contribute the total cost of furnishing a dormitory room.

Appointments



Adrian Nader



Mrs. McMillen

Two new appointments of particular note to Wagner alumni were those of Adrian F. Nader to the newly created Director of Development post and Mrs. Eleanor McMillen as alumni office secretary.

Nader, a veteran Marietta College public relations and development man, will supervise the Wagner development campaigns. A former director of public relations, he had been assistant to the president for development at Marietta since March 1954.

A graduate of Wittenberg College, Nader has also studied at Ohio State University. Following six years as an English teacher in the New Lexington (Ohio) High School, he served three years as an officer in the U. S. Naval Reserve. Named assistant public relations director in 1946, he was appointed director in 1947 and was elected assistant secretary to the board of trustees this year.

Mrs. McMillen has been a voluntary member of the staff of the Staten Island Historical Society since 1935. Currently she is corresponding secretary for the society. Her husband, Loring McMillen, is vice-president of the society and director of its historical museum.

Previously Mrs. McMillen had been active in Parent-Teachers Association work and served as recording secretary for the Federation of Parent-Teachers Associations in 1955—56. She is also affiliated with the Staten Island Institute of Arts and Sciences, the Staten Island Zoological Society and the Women's Auxiliary of the Staten Island Historical Society.

Although a considerable number of candidates for the director of alumni relations post have been interviewed, the assignment remains unfilled. It is hoped that some definite announcement can be made by the first of the year.



Olivia Brewer sings for the CBS television cameras during a special closed-circuit telecast from the Wagner stage. It was all part of the popular special evening course in television production techniques for black and white and color. The course is given by John Koushouris ('56) who is Engineer-in-Charge of color television technical operations for the Columba Broadcasting System.

When Is A First A First?

We're indebted to Al Krahmer, '27, for calling attention to an ambiguity in our announcement of the dormitory ground-breaking, sent to all alumni in September. Al questioned our statement which identified the new dorm as the first campus building "specifically designed as a dormitory for men."

"South Hall," wrote Al, ". . . was built as a dormitory for men . . . as were Luther and Cook Halls . . ."

We'd like to explain that we took as our authority this statement in the college catalogue: "South Hall was originally used for administrative offices and class rooms." Luther and

Cook Halls were not considered, since both are temporary buildings and Cook Hall (used for GI apartments) is now torn down.

"Perhaps this modified statement accurately describes the new dorm: "This is the first permanent building to be designed for use exclusively as a men's dorm and as an all-college dining hall."

O. K., Al? We hasten to assure you and all other alumni that no slight was intended to the many fine faculty, staff members, and alumni of the past whose devoted efforts have produced a Wagner College in which all of us can take pride.



More than 1,300 young people visited Wagner's campus during the 1956 home football season using the college's discount ticket plan. Shown above is the Rev. Norman Dinkel ('52) with the Luther Leaguers of Trinity Evangelical Lutheran Church of Maspeth, L.I. — one of the eighty groups. The same plan is in effect for the basketball season with a limited number of seats available for every home game. Tickets are 25c each. Send check and your first and second choice of dates on the organization's letterhead to: The Director of Public Relations, Wagner College, Staten Island 1, N. Y. The full basketball schedule can be found on page 11.

HOMECOM



ALPHA DELTA PI sorority again took Float Parade honors. The pretty coeds, who based their float design on a "The King and I" theme, won their fourth 1st prize. The float awards started in 1949.



It is beginning to look like it should be HOMECOMING WEEK instead of WEEKEND. Some of the events in a jam-packed 29 hours are shown on these pages.

PEP RALLY



CORONATION



FRESHMAN SHOW



ING WEEKEND



Threatening weather dampened no one's enthusiasm. Every seat and every square inch of standing room was occupied for HOMECOMING 1956.

John Mangiante, as the King of Siam, presents the football to Queen Jeanette Lynch. In the foreground are the king's "children," who tip-toed in to "The March of the Siamese Children." Saturday Mangiante became the first two-time Robb Trophy winner.

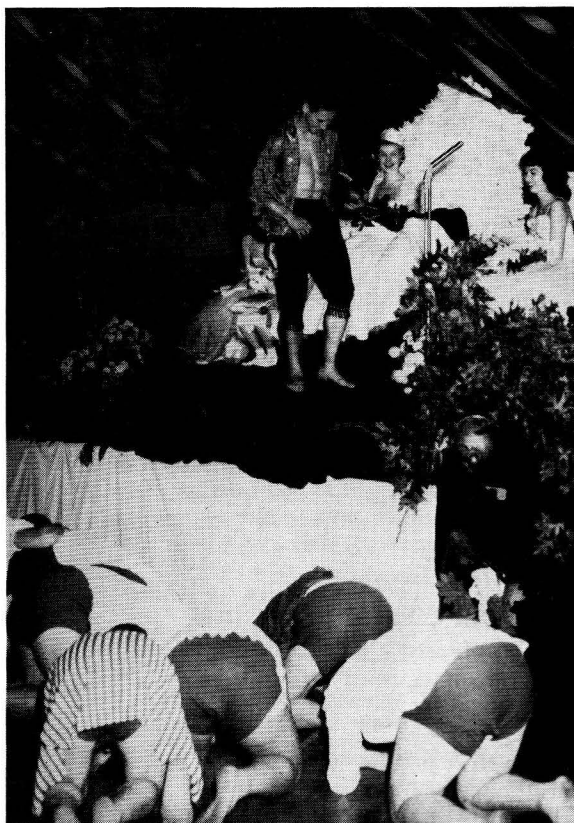


No longer can we describe Homecoming as just "bigger and better." This has come to be expected and as a matter of fact is exactly the case in each successive year. The weekend is now not only the most ambitious campus project of the year, but the biggest celebration held in this Staten Island community of 200,000 people.

If you arrived just a bit late for the float parade, you might have thought the entire 200,000 were in attendance when you looked for a seat. Actually, there were about 5,000. Alumni representation was good too. Every class from 1934 on had at least one member "on the hill," and seven more classes from 1894 through 1932 signed the alumni register from which these figures were taken.

Many missed Friday evening's events, however, and right now is a good time to make a mental note reminding yourself to come to the Pep Rally, the Coronation and the Freshman Show. All were outstanding.

A deep bow of thanks is due the Homecoming Committee, headed by energetic Wendy Glusker. Miss Glusker, shown below serving at the Alumni Coffee Hour, took personal responsibility for many events.



PUSHCART DERBY



FLOAT PARADE



ALUMNI COFFEE HOUR





HOMECOMING WEEKEND



WHO'S KICKING

Not us. We Wagnerians (classes 1960—plus) heartily endorse the products of sartorial splendor offered by the Wagner College Bookstore. Those chic jerseys we're wearing go for just \$2.10. The pennant, which is now tacked to our bedroom wall, is an 85c item. Our dad, wealthy alumnus of the class of 1950, says he's going to do a lot of his Christmas shopping "on the hill." See for yourself, or drop a line for info concerning Wagneriana that can make your kid's Christmas morning complete.

**THE
WAGNER COLLEGE BOOKSTORE
WAGNER COLLEGE
STATEN ISLAND 1, NEW YORK**

The perfect gift for an alumnus . . .

THE NEW RECORDING OF
**THE WAGNER COLLEGE
CHOIR**

Twelve inspired offerings include Bach's "Jesus, Priceless Treasure," Grieg's "How Fair is Thy Face," Thompson's "Alleluia" and Davis' "Carol of the Drum"

**CUSTOM MANUFACTURED BY
RCA VICTOR NON-BREAKABLE
— LONG PLAYING (33 1/3)**

Price: \$5.00

Write to

**CHOIR RECORDS
WAGNER COLLEGE
STATEN ISLAND 1, N. Y.**



Former Homecoming Queens were introduced at Saturday's dance. Shown with Queen Jeanette are LuAnn Steinhauer, '55 (left) and Adele Wessels, '54.



Alumni Association President Werner Johnson presents the Queen's Cup to Jeanette Lynch. Queen Jeanette is a junior from Fairlawn, N.J. and is majoring in elementary education.



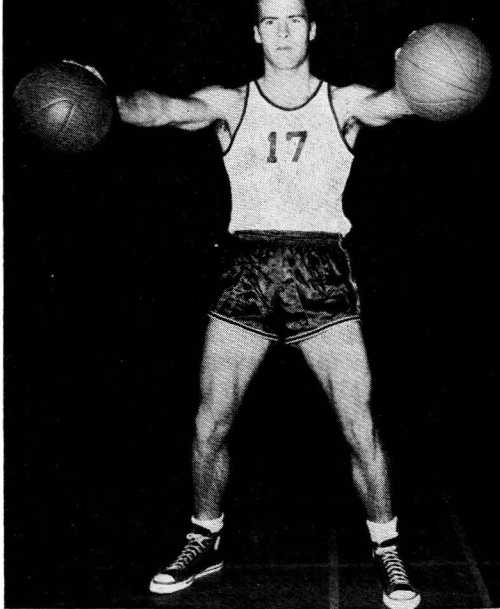
Charley Harreus, former Seahawk standout on the basketball court, chats with Professor Johann Schulz at the Coffee Hour.



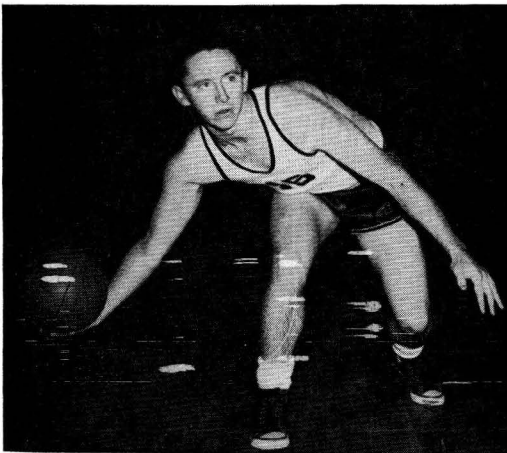
The Rev. Dr. Carl Sutter, Al Shade and Dr. F. C. DeWalsh were among the estimated 400 who attended the after-game Coffee Hour.



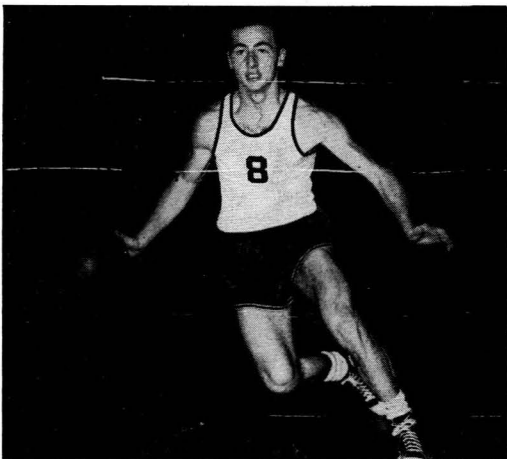
Sigma Delta Phi Fraternity's tiger took third prize in the float parade behind the entries of Alpha Delta Pi and Alpha Omicron Pi sororities. The first and second place floats are shown on two preceding pages. Most of the dozen floats paraded through the Grymes Hill Apartments.



CAPTAIN BOB MAHALA

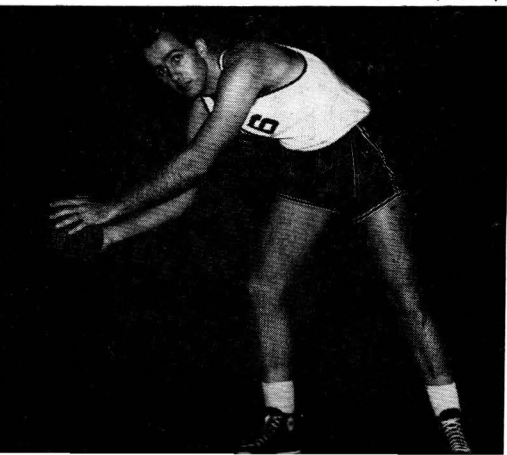


TOM DRAKE



DICK SIMLER

GEORGE BLOMQUIST (below)



Remember when the Wagner College basketball team would clear the defensive boards, and the rebounder, after pausing for a few seconds would lob the ball to Ray Doody, Jay Quintana, Donn Briggs or Lionel Rotelli? Then one of these backcourt specialists would slowly bring the ball up-court to start the methodical maneuvers that were intended to yield two points for the Green and White. As the man once said, "Them days are gone forever."

"The 1956—57 Seahawk quintet will run," says Coach Herb Sutter. This strange-to-Wagner racehorse style is evident at all practice sessions, and it is hoped it will pay off under game conditions.

This will be a good year for the Seahawks on the hardwood, but no matter what the final record might be, one will not be able to help but compare with the brilliant 20—3 mark of last season.

*The "new look"
Seahawk five is set
to "run through" the
1956-57 schedule.*

THEY WILL GO GO GO

Lettermen Bob Mahala (captain for 1956—57), Tom Drake, Dick Simler and George Blomquist return, but among the missing are Ed Peterson, who was graduated last June and the spectacular Mr. Charles "Lonny" West.

We were of course prepared for Peterson's leaving, but hopes were shattered along with Lonny's leg when he suffered a fracture during the summer. The situation is further aggravated by the doubtful status of 6-5 Paul Bailey whose knee injury will keep him sidelined for a considerable period — if not the entire season.

This means the team lacks reasonably good height by present day standards which call for a couple of 6-5ers on the starting five and on the bench. Thus we can't overpower them, so we'll outrun them.

Mahala, Drake and Blomquist appear to be certain starters. With Drake in the back court it will most likely be Simler, sophomore Milfred Fierce or freshman Harry Orlando. Freshman Fred Blackwell (6-4) has clinched a starting berth at center or forward.

1956-57 BASKETBALL SCHEDULE

December

5	Brooklyn Poly	H
11	C.C.N.Y.	H
13	Loyola (Baltimore)	A
15	Upsala	A
17	Fair, Dickinson	A
19	Manhattan	H
21	Muhlenberg	H
27-29	Hofstra Tournament	

January

4	Brooklyn	A
5	West Chester State	H
9	Stevens	H
11	Kings Point	H
26	St. John's	H
30	Iona	A

February

2	Gettysburg	H
8	Scranton	A
9	Bucknell	A
13	Albright	A
16	St. Francis (Pa.)	H
20	Moravian	A
23	Adelphi	H
27	Hofstra	H

March

2	St. Peter's	A
*7	Manhattan	A
*	Madison Square Garden	

IT HAPPENED ON THE HILL



THE FIRST COLLEGE POLIO VACCINE CLINIC in New York City was established at Wagner early in November in cooperation with the Department of Health. The college's students and faculty were eligible to receive the Salk polio vaccine free of charge. Cheerleader Priscilla Etgen, in the photo above, encourages Halfback Ralph DiLullo as he is about to receive the shot at the opening of the clinic. Dr. Robert Wolkwitz, college physician, administers the vaccine.

A SEE MORE FOR LESS committee has been established at the college. The committee is planning to secure discount tickets for the theatre, concerts and other cultural events going on in the metropolitan area. Students are urged to take advantage of the offerings. The committee notes encouraging success in its early efforts.

EXCELLENT HOMECOMING FILMS will soon be available for showing to alumni clubs and other interested groups. There is 100 feet of the alumni coffee hour alone.

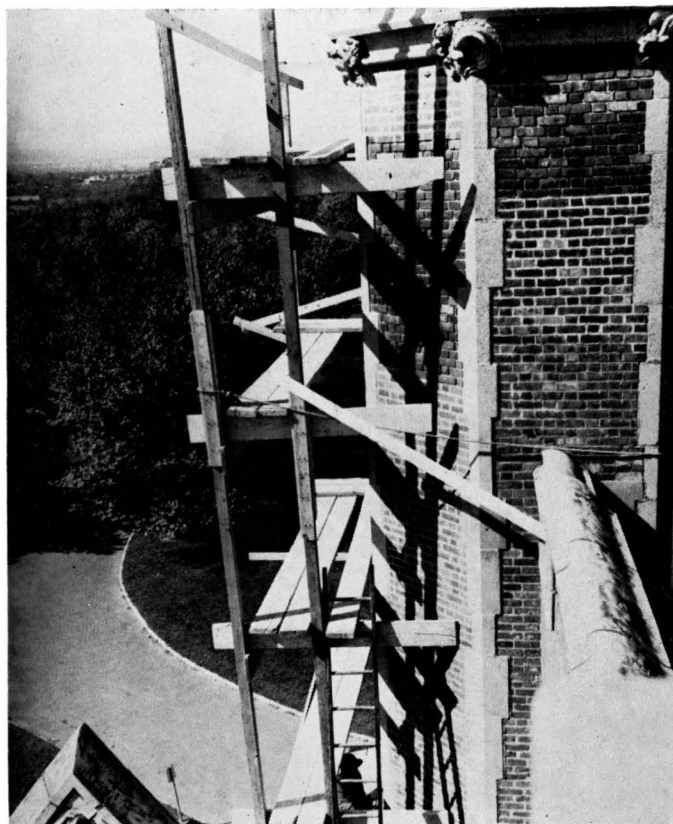
GOVERNOR AVERILL HARRIMAN was an interested spectator in the opening moments of the Wagner-Kings Point football game. He is shown below accepting a Seahawk doll from the Wagner cheerleaders just before the kickoff. The governor, in a brief message to the spectators, refused to take sides in the football game but admitted he was a Wagner (Mayor) fan. The teams were non-committal too — the game ended in a 7-7 tie.



PHIL SILVERS, ALIAS SERGEANT BILKO, in his October 2 TV show gave the college a coast-to-coast plug by displaying a large Wagner pennant in one sequence. Yale, Harvard and a couple of others were shown too. Thanks, Mr. Silvers, and as Bilko would say "Tenshun! gphlkngr."

CONGRATULATIONS TO MR. AND MRS. BRUNO KRAMER, who celebrated their 50th wedding anniversary October 10. Bruno, as he is affectionately known to students and alumni, is custodian of the Administration Building. The Staten Island Advance recently ran a lengthy article on Bruno's career in vaudeville.

SCAFFOLDING HAS ADORNED many parts of the Administration Building recently. This Wagner landmark is being repointed for the first time. It seems that mortar in some places has started to crumble. (A very normal phenomenon. A century of service remains.)



A ONE-MAN EXHIBITION of recent paintings by Dr. John Opper was scheduled for November 26 — December 15 at the college. Dr. Opper has had one-man shows at the San Francisco Museum of art, Whitney Museum, Eagan Gallery and universities throughout the country.

THE CHRISTMAS CONCERT is set for December 16 with performances listed for 4:30 and 8 p.m. Dr. Sigvart Steen will direct the Wagner Choir, and Chief Warrant Officer William Berky will conduct the First Air Force Band.



Alumni News Briefs

1910

THE REV. DR. ARNOLD F. KELLER was guest speaker at the Reformation Day Service of Rochester's Lutheran Church of the Redeemer.

1918

THE REV. GEORGE R. F. TAMKE re-elected to three-year term on the Lutheran Welfare Association of New Jersey board of trustees.

1922

THE REV. EDMUND A. BOSCH recently honored in retirement ceremony at Governors Island. Chaplain Bosch is a lieutenant colonel and holds the Bronze Star Medal and the European Theatre Ribbon with four battle stars among his decorations.

1924

DR. FRED W. KERN, director of religious affairs, Federal Civil Defense Administration, was the speaker at the United Church Women of Mecklenburg World Community Day abservance at Charlotte, N. C.

1927

THE REV. ALFRED J. KRAHMER installed as Public Relations Director of the Lutheran Welfare Association of New Jersey . . . THE REV. ALBERT P. SCHILKE installed as pastor of Good Shephard Church, a mission he developed in Norwalk, Conn.

1929

THE REV. WILLIAM T. HEIL installed as Pastor of Immanuel Church, Meriden, Conn. . . . THE REV. FREDERIC R. LUDWIG elected to ULCA Board of American Missions.

1930

THE REV. NATHNIEL H. KERN elected to Board of Deaconess Work.

1931

DR. ALBERT P. STAUDERMAN, associate editor of THE LUTHERAN, spoke at the fall meeting of the Southern Conference Brotherhood in Trinity Church, Runnemeade, N. J.

1935

THE REV. MARTIN LEHFELD installed as pastor of Honterus Evangelical Lutheran Church, Youngstown, Ohio.

1938

THE REV. ALFRED J. SCHROEDER installed pastor of St. Paul's Evangelical Lutheran Church, Utica, N. Y. . . . FRED RIEBESELL, Associate Professor of Chemistry at State University Teachers College, Oneonta, N. Y.

1939

THE REV. HAROLD HAAS elected to ULCA Board of Social Missions.

1940

LLOYD RICE appointed Administrative Assistant to the District Principal in the Island Trees, L. I., Board of Education. . . . THE REV. EVERETT J. JENSEN, pastor of Gethsemane Lutheran Church, Seattle, Washington from Grace Lutheran Church,



Greetings to you and Wagner College from the home of the "Gold Rush Country" of California, the beloved county of Sacramento. At the convention of our Synod, recently held at Faith Lutheran Church in Phoenix, Arizona, I managed to round up all of the Wagner grads at present serving parishes of the Pacific Southwest Synod of the United Lutheran Church. This picture shows just how Wagner has followed the advice of Horace Greely and how wide-reaching an alumni association we really do have . . .

Reading left to right the men and their parishes are: the Rev. Henry W. Reenstjerna ('50), Pastor of St. Timothy's Lutheran Church of North Highlands, Calif.; Mr. George Scheitlin ('53), serving as Student Intern at Faith Lutheran Church of Phoenix; the Rev. Edward Sheldon ('40), Pastor of the Good Shephard Lutheran Church of Concord, Calif.; the Rev. Dr. Conrad Reisch ('20), serving as Mission Developer for the Board of American Missions of the ULCA at Sunnyvale, Calif. and the Rev. Dr. Walter Ruccius ('14), Pastor of Grace Lutheran Church of Santa Barbara, Calif. . . .

Cordially,

Henry W. Reenstjerna
St. Timothy's Lutheran Church
North Highlands, California

Thank you for this and other information that appears elsewhere on these pages and for the photograph. Let's hear from more of you Wagner grads.

THE EDITOR

Corvallis, Oregon. MRS. JENSEN is the former BEATRICE WERNER ('41) . . . THE REV. JOHN S. KLC, editor of THE ZION, church publication of the Slovak Evangelical Aug. Confession Zion Synod.

1942

Capacity attendance reported at the 29th annual session of the Pinecrest Luther League Leadership School under the direction of THE REV. LEONARD R. KLEMANN of Forest Hills, L. I. . . . HAROLD E. HAMMOND back from a month in Europe where he visited projects of Lutheran World Action. THE REV. WALTER MORTEN, JR. from St. Mark's Lutheran Church, Hackensack to Zion Lutheran Church, Riverside, N. J.

1944

First Church, Rockville, Conn. (THE REV. GORDON HOHL), celebrated its 90th anniversary September 23.

1945

WARREN C. RAYMALEY appointed to the Department of English staff at Paterson State Teachers College.

THE REV. NORMAN H. FOWLER from The Prince of Peace Evangelical Lutheran Church in Paramus, N. J. to St. Paul's Lutheran Church, Greenfield, Mass.

1947

THE REV. NORMAN H. FOWLER from the Prince of Peace Evangelical Lutheran Church in Paramus, N. J. to St. Paul's Lutheran Church, Greenfield, Mass.

1948

LAROV S. DIETRICH appointed Assistant Professor of Chemistry at the Columbia University College of Physicians and Surgeons.



A DECADE LATER — Nursing alumnae gathered in Cunard Hall September 27 for a tenth anniversary dinner held in their honor. The ten-year alumnae are shown above with Miss Mary Burr, Dean of the School of Nursing, and Mrs. Eva Clark, secretary to the dean. Left to right (seated) are Marion Stover Books, Mrs. Clark, Dean Burr, Naomi Stover Monge, Dorothy Miller Butler and Betty Strait Hibian. Standing are Miriam Herron Ross, Hedwig Schwartz Kessel, Doris Ekstrand Taber, Alice Delaney Cicenia, Mary Blaine, Rose Smith Stahl, Doris McCullough Miller, Elaine Strongman Kesner and Virginia Bloom. About 35 alumnae attended the dinner.

1949

MARY BAKER won a library scholarship from the New York Public Library's general scholarship fund for advanced study . . . DAVID BOYD named boys' and youth work director of the Plainfield, N.J. "Y" . . . MARTIN GODART appointed supervising principal of the Lee H. Kellogg School, Falls Village, Conn. . . . GEORGE KRUSE awarded LL.B. degree by La Salle Extension University of Chicago . . . THE REV. RICHARD NYBRO elected to the Board of Trustees of the Lutheran Welfare Association of N.J.

1950

DON BROCKMAN featured speaker at meeting of Lima, Ohio Sub-Section of the American Society for Quality Control . . . Reformation Church, New Britain, Conn. (THE REV. STANLEY H. KNULL), celebrated its 50th anniversary October 28 . . . DR. WILLIAM WEINSTEIN awarded doctor of medicine degree at Medical School of Berne University, Switzerland . . . RICHARD LINDENBERGER teaching 5th grade at Fern Place, N.Y. . . . CHARLES ANDERSON promoted to project leader with the Chemical Research and Development Department of the Vitro National Laboratories Division's West Orange, N.J., Laboratory.

1951

ELEANOR BORRIES joined Shell Development Company's Emeryville, California Research Center as patent searcher in the Patent Division . . . STEVE PLICHTA, known professionally as Steve Palmer, is staff announcer at WKRC-TV, Cincinnati.

1952

EUGENE BROWNE teaching social studies at the Millburn, N.J. Junior High School . . . Nathaniel Webster, a freshman at Meharry Medical College, Nashville, Tenn.

. . . FREDERIC HILL received the Bachelor of Sacred Theology degree from Harvard University . . . THE REV. HOWARD NORRIS installed as pastor of Good Shephard Lutheran Church, Weehawken, N.J. . . . DR. WILLIAM HARVEY received the doctor of medicine degree from Albany Medical College of Union University. He has received an internship appointment to Deaconess Hospital, Buffalo, N.Y.

1953

ROBERT BELKNAP teaching English at the Parkside Junior High School, Massapequa, L.I. . . . THE REV. EDWIN EASTMAN installed as pastor of St. Paul's Lutheran Church, Beachwood, N.J. . . . LOUIS MASSELLA teaching English and Social Studies at the Peekskill Military Academy, Peekskill, N.Y. . . . GEORGE SANDER discharged from Navy and working in Arlington, Va. . . . GEORGE SCHEITLIN elected president of the student body at Pacific Lutheran Seminary at Berkeley, California.

1954

LIEUTENANT CLARKE DEWATERS transferred from Texas where he was a pilot. New assignment expected to be Florida . . . NANCY CARSTEN PETERSON teaching 5th grade at Raymond Chisholm School . . . DANIEL UZUPAN doing intern work at St. John's Evangelical Lutheran Church, Albany, N.Y. . . . A Master of Arts degree to MARIAN BELLAN from Syracuse University . . . VINCENT MONTANTI among those rescued from the Andrea Doria when disaster struck the Italian liner last summer . . . RICHARD PRALL is a member of the freshman class at New York University's School of Law.

1955

GUS MERKEL appointed editor of the West Islip Bulletin, the Suffolk Journal of Lin-

denhurst and the Copiague Journal, all Long Island weekly newspapers. The former varsity basketball star recently received the Master's Degree in Journalism from Syracuse University . . . WILLIAM HEIL back from Heidelberg, Germany where he was a Rotary Foundation exchange student and now at the Lutheran Theological Seminary, Philadelphia . . . A Master of Arts degree in history to ROSE MURPHY from the University of Pennsylvania . . . JOHN PETERS stationed with U.S. Army Headquarters Company, Fort Myer, Va. . . . KENNETH BAUMHOFF elected secretary of the student body at Pacific Lutheran Seminary at Berkeley, California. EUGENE VANDERWATER elected treasurer of same organization.

1956

ROY RODERICK elected president of the junior (first year) class at the Lutheran Theological Seminary, Philadelphia (BILL HEIL, '55, elected Vice-President) . . . LIEUTENANTS ED PETERSON, AL SCHROEDER and SAL VINDIGNI stationed at the Quantico Marine Base, Va. . . . RONALD LARDER working for Master's Degree at Syracuse University . . . PAUL PRESTER is commercial representative for the New York and Richmond Gas Co. . . . DONALD BURRY entered the Coast Guard Academy at New London, Conn.

Former Students

HERBERT FLAMM elected President of the Richmond County Chiropractic Association . . . EDWARD L. DENTON appointed general counsel to Afco Inc.

Deaths

THE REV. DR. HEINRICH KROPP, '15, died July 30, 1956 aged 62 years. At the time of his death he was pastor of the Zion Lutheran Church, Brooklyn. He was born in Germany and came to this country in 1909. He was a graduate of Lutheran Theological Seminary in Philadelphia and obtained his doctor's degree from Hartwick College.

THE REV. GEORGE H. HARTWIG, '98, died July 31, 1956 aged 77 years. Born in Canajoharie, N.Y., he also attended Stanford University and the Lutheran Theological Seminary in Philadelphia. Pastor Hartwig served parishes in Potter and Hornell, N.Y., and Bridgewater, Nova Scotia, and taught at Lenoir, St. Olaf, Wittenberg, Dana and Midland colleges. He retired from Midland in 1949.

THE REV. DR. J. GEORGE F. BLAESI '95, died September 24, 1956 aged 81 years. A graduate of the Lutheran Theological Seminary in Philadelphia, he also studied at Heidelberg, Germany, and Columbia University, and received the Doctor of Divinity Degree from Hartwick Theological Seminary. Dr. BlaesI was pastor emeritus of St. Peter's Lutheran Church, Brooklyn, and had served that church from 1914 until his retirement in 1953.

Send the editor information
about your activities.

Just
Named



A son, Andrew Walter, to Mr. and Mrs. WALTER ROMANOVSKY, '55, February 18.

A son, Richard Andrew, to Mr. and Mrs. H. John Powell (PHYLLIS MACDONALD, '49), April 4.

A son, Richard Francis, to Mr. and Mrs. John D. Lutes (IVY VURTURE N'48), May 11.

A son, Craig George, to GEORGE '50 and HELEN DEUSCHLE '50 NIEDERHAUSER, May 12.

A son, David William, to GEORGE '50 and RUTH DILLER '53N WIEDERECHT, June 10.

A son, Robert Stephen, to the Rev. and Mrs. ROBERT T. NIELSSEN '53, June 11.

A daughter, Carol Frances, to Mr. and Mrs. CARL FRANZEN '50, June 17.

A daughter, Barbara Jane, to WILLIAM '53 and JANE STOWELL '51 BROWN, June 18.

A son, John Scott, to Mr. and Mrs. ROBERT MIZE '56, June 18.

A son, Robert William, to the Rev. ROBERT '47 and VIRGINIA NELSON N'50 ARMSTRONG, June 22.

A son, Robert Charles, to RICHARD '50 and HELEN McNALLY '53 SCHOENLANK, July 10.

A son, Eric Jonathan, to the Rev. and Mrs. HENRY W. KIRCHER '50, July 15.

A son, David Iaan, to Mr. and Mrs. Herman M. Mathens (ALICE MARDUS '46N) July 30.

A son, Scott Anderson, to Lt. DONALD C. '54 and ROSE PANDULLO '55 BRIGGS, Aug. 9.

A son, Stephen Michael, to Mr. and Mrs. HENRY GUTZLER '50, August 13.

A daughter, Katherine Loretta, to WILLIAM '49 and ETHEL M. AHLSTROM '51 SCHORKOPF, August 16.

A daughter, Pamela Ann, to Dr. and Mrs. H. EDWARD MARSHON '52, August 21.

A daughter, Michele Marie, to Mr. and Mrs. JOSEPH CRECCA '50, September 8.

A daughter, Diane Lori, to the Rev. HELMUT '45 and DOROTHY KRAUS '45 DIETRICH, September 11.

A son, Francis Edward, to Lt. and Mrs. FRANCES E. MALONE '49, September 12.

A daughter, Diane Deborah, to NORBERT H. M'56, and ANN HUMPHREY '50 LEESEBERG, September 15.

A daughter, Patricia Ann, to Mr. and Mrs. BENEDICT LA ROSA '55, September 18.

A son, Mark Eric, to the Rev. LAROS S. '48 and ELIZABETH HINTERMEISTER '48N DIETRICH, September 20.

A son, Jeffrey Paul, to Mr. and Mrs. PAUL R. TAKACH '53, September 25.

A son, John Marinus, to Mr. and Mrs. Hendrick Stiggelbout (JOAN SHEAFFER '54N), September 27.

A son, Arthur Edgerly III, to ARTHUR E. '53 and BARBARA CURRY '54 VAN ETEN, Jr., September 29.

A son, Thomas Ralph, to Mr. and Mrs. Salvatore Carangelo (FRANCES GUSTAVSEN '50), October 1.

A son, Rolf Arthur, Jr., to Mr. and Mrs. ROLF OLSEN '51, October 1.

A daughter, Karen Frances, to Mr. and Mrs. FRANK SILVA '50, October 2.

A daughter, Catherine Anne, to Mr. and Mrs. FRANK CREVELING '50, October 6.

Space For Growth

Continued from Page 4

Space to grow — for the student, for the faculty, for the college — all these must be provided. How then do we proceed?

Last Sunday we took one step when we broke ground for the new dormitory for men. It will provide not only living space for men, but dining space for the entire resident student body at one sitting with room for future expansion. It also marks the beginning of a decade of development — an era in which Wagner's "space for growth" will be enormously enhanced.

Today this task may appear insuperable to many. Our Committee on Future Resources is outlining a formidable array of needs. We know that our present resources are far too small to cope with the enrollment we should accept within five years. This is particularly true when we realize that at the same time we must increase and enhance the quality of our program and maintain the wonderful qualities and personal relations which have always characterized Wagner.

Hence, we begin a decade of development — a calculated and continuous effort to extend and to stretch our space for growth. General plans have been discussed for a year past; soon detailed outlines will appear. For in 1958 we celebrate Wagner's 75th year — a year when we will launch a commemorative campaign. This is one reason why we have just established a development office.

There are those of little faith who will say that these dreams and plans are meaningless and worthless. But, if, as Norman Cousins states, "we have some feeling for the gift of life and the uniqueness of life, if we have confidence in freedom, growth, and the miracle of vital change, then difficulty loses its power to intimidate."

I know that we will not be intimidated. Despite the pangs produced by self-extension, we will proceed with imagination, with boldness, and decision.

Thus, we provide space to grow; thus Wagner more than ever realizes its destiny as a genetic force, meeting in its own way the creative requirements of its future.

Just
Tamed



Frederick W. Zipf III and JEAN VETTERLEIN '55, June 16.

Gustav Dolmanisth and NANCY WAGNER '56N, June 16.

ROBERT GRILLO '50 and Mary Esther Hoyt, June 16.

Vernon Scholar and JOYCE KOBAK '55, June 17.

SALVATORE VINDIGNI '56 and GERMAINE BRENNAN '56, June 23.

Anthony E. Parisi, Jr. and ADRIENNE LOUISE LA PENNA '55, June 30.

CARL BORCHERS '56 and Elsie L. McNair, June 30.

PETER STEINMETZ '56 and Elizabeth Ann McLaughlin, July 1.

KARL STROBEL '56 and Maureen F. Ryan, July 1.

JAMES WHEELER '52 and Irene Ann Ott, July 4.

JOHN LEWIS '50 and Yvonne Tinnin, July 7.

FREDERICK SCHNEIDER '52 and Sylvia Wentzell, July 8.

Paul Kortwich, Jr. and PATRICIA PATTERSON '52, July 14.

CORNELIUS LEONARD '53 and Jean L. Olsen, July 14.

Edmund Buhrens and MARIANNE THIEMSEN '56, July 21.

LUDWIG BILOW III '55 and Florence Simon, August 5.

Richard Blair and DIANA NEBAUER '50, August 11.

VINCENT BAIERA '55 and June Costello, August 11.

CHARLES CLAUD '53 and Florence Weber, August 18.

MAX MORETTI '50 and Gertrude Levinger, August 18.

SIDNEY KILSHEIMER '52 and Grace Sewell, August 18.

HENRY FOERST '53 and Helen Anne Pizappi, August 18.

WILLIAM ROEHRICH '52 and DORIS AHRENS '55, August 19.

ADOLPH MOLLER '53 and Lucymary Demetrius, August 19.

Paul Visoky and ANNE-MAE LORENZ '56, August 23.

Eugene Ernest and CARLYN YOUNG '56N, August 25.

REGINALD MILLER '52 and Nancy Brigham, September 1.

GUY MOLINARI '48 and Marguerite Wing, September 1.

Robert Grant and BONNIE RAE WEAVER '55N, September 8.

JOSEPH AMARI '52 and GLORIA WALLICH '53, September 8.

FREDERICK LAPNOW '54 and DOROTHY HARRIS '55N, September 8.

CHARLES CHAMBERLAIN '50 and Elaine Foster, September 8.

WALTER BARRY '53 and Marilyn Meyerchak, September 15.

PATRICK RUBILOTTA '51 and Dorothy M. Todd, September 15.

Paul Holman and SHEILA BYRNE '56N, October 14.

THE LINK
WAGNER COLLEGE
Alumni Association
Staten Island 1, N. Y.

Sec. 34.66 P. L. & R.
Staten Island, N. Y.
U. S. POSTAGE
PERMIT NO. 22

Coming
College
Events

DECEMBER

- 11 Basketball: C.C.N.Y. at Wagner
- 13 All College Convention
- 14 Wagner College Guild Meeting
- 15-16 Christmas Program
- 17 Christmas Choir Chapel Program
- 18 Weinachtsfest
- 19 Basketball: Manhattan at Wagner
- 20 Christmas Festivities, Candlelight Service, Carolling
- 21 Basketball: Muhlenberg at Wagner
- 22 Christmas Vacation begins

JANUARY

- 3 Classes resume
- 5 Basketball: West Chester at Wagner
- 8 All College Convention
- 9 Basketball: Stevens at Wagner
- 11 Basketball: Kings Point at Wagner
- 14-18 Final Semester Examinations
- 24-25 Registration
- 26 Basketball: St. Johns at Wagner
- 28 Classes begin

FEBRUARY

- 2 Arista Day
- Basketball: Gettysburg at Wagner
- 8 Wagner College Guild Meeting
- 10 Homecoming Choir Concert
- 16 Basketball: St. Frances of Loretta, Pa. at Wagner
- 23 Basketball: Adelphi at Wagner
- 27 Basketball: Hofstra at Wagner

MARCH

- 1-2 Fifth Annual Symposium on Air Pollution
- 1 Junior Prom
- 7 Basketball: Manhattan vs. Wagner at Madison Square Garden
- 21 All College Convocation
- 24 Luther College Band
- 31 Long Island District Luther League Lenten Retreat