

SEATTLE ART MUSEUM

ANNUAL REPORT

1952



FRONTISPIECE. *Deified Queen (copper);*
Ceylon, early 13th century A. D.;
H. 20 in. (F1n11.10). Eugene Fuller
Memorial Collection.

ANNUAL REPORT
OF THE
SEATTLE ART MUSEUM

FORTY-SEVENTH YEAR

1952

SEATTLE 2, WASHINGTON

SEATTLE ART MUSEUM

1952-53

OFFICERS

President, Richard E. Fuller
First Vice-President, Edward W. Allen
Second Vice-President, Charles M. Clark
Secretary, Horton C. Force
Treasurer, Henry H. Judson

TRUSTEES

LIFE TRUSTEE

Mrs. Eugene Fuller

TERM ENDING 1953

Edward W. Allen	Horton C. Force
Manson Backus, II	Mrs. Pendleton Miller
Mrs. A. Scott Bullitt	Mrs. Reginald H. Parsons

TERM ENDING 1954

Mrs. Cebert Baillargeon	John H. Hauberg, Jr.
Miss Joanna Eckstein	Thomas Pelly
Mrs. Donald E. Frederick	Raymond G. Wright

TERM ENDING 1955

Mrs. Herbert Brink	Richard E. Fuller
Charles M. Clark	Henry H. Judson
Norman Davis	Mrs. Thomas D. Stimson

EX-OFFICIO

Mayor of the City of Seattle
President of the City Council President of the Park Board
Comptroller of the City of Seattle
President of the School Board of Seattle School District No. 1

MUSEUM STAFF

Richard E. Fuller <i>Director</i>	Hermie M. Lyons <i>Librarian</i>
Millard B. Rogers <i>Assistant Director</i>	Margery C. Anneberg <i>Staff Secretary</i>
Kenneth Callahan <i>Curator</i>	Mrs. Alan Maxwell J. Ronald Todd <i>Information and Sales</i>
Emily Hartwell Tupper <i>Registrar</i>	Earl T. Fields <i>Staff Photographer</i>
Edward B. Thomas <i>Curator of Education</i>	Walter Froelich <i>Museum Assistant</i>
Mrs. Coe V. Malone <i>Museum Secretary</i>	Muriel Thurber <i>Publicity</i>

SEATTLE PARK DEPARTMENT

George Haslam <i>Senior Custodial Engineer</i>	David W. Burns Elmer Herdeck Leslie Holtzworth <i>Junior Custodial Engineers</i>
---	---

EXECUTIVE COMMITTEE OF THE GUILD 1952-53

Mrs. Alan B. Sheldon, *Chairman*
Mrs. Miller Munson, *Vice-Chairman and Projects*
Mrs. Charles A. Lawrence, Jr., *Recording Secretary*
Mrs. Clarence T. Rottler, *Corresponding Secretary*
Mrs. A. Talcott Ostrander, *Treasurer*
Mrs. Brian Wattleworth, *Program*
Mrs. Dorothy Fincke Lahr, *Docent*
Mrs. Carl L. Swanson, *Lectures*
Mrs. Bryant R. Dunn, *Membership*
Mrs. Frank W. Dearborn, *Public Relations*
Mrs. James Vernon Metcalfe, *Hospitality*
Mrs. Grant I. Butterbaugh, *Publicity*

ANNUAL REPORT OF THE
PRESIDENT AND DIRECTOR
FOR 1952

IN THE twenty years of the Museum's history, 1952 stands out in many respects. Our representation of European art was greatly strengthened both by the receipt from the Estate of LeRoy M. Backus of an important group of drawings and paintings bequeathed from his noted collection, and by the installation of Italian paintings and sculpture from the Samuel H. Kress Foundation. This installation demanded a major investment in which the City cooperated. The need of additional space to show the latter collection and to permit its retention in Seattle resulted in a major but abortive effort to have passed by ballot a Park Board bond issue including funds for a much needed addition. The expense for the preparation of the plans and the campaign had to be met by special funds contributed by good friends. The acceptance of the honor and privilege of showing next summer the official Japanese Exhibition demanded a substantial initial payment towards the expenses of transportation and insurance. This necessitated the first of what we expect to be a series of bank loans which we trust will be paid largely through entrance fees. By retirement and resignation we lost the valued services of three key members of our staff. We were most fortunate in replacing them so that we could maintain our activities without interruption. Even in this summary, mention should be made of the highly successful architectural tour which met the deficit of our lean summer months.

Kress Collection

The outstanding event of the year was unquestionably the installation of the twenty-five Italian items which we received from the Samuel H. Kress Foundation. In this action we broke an established precedent of having our exhibition space completely flexible. The scope and quality of the material justified our action, for it permits us to present to our visitors an historical survey of one of the most important phases in the development of Western civilization.

These works of art consist of a large ceiling mural by Tiepolo with the original sketch, twenty-one paintings ranging in age from the 14th to the 18th Century and two 16th Century marble sculptures. They were selected by my then Associate Director, Sherman E. Lee, in consultation with me, to illustrate five great creative cen-

turies from the Romanesque through the Renaissance. Most of the items were in the Samuel H. Kress Collection but some, such as the ceiling and the sculpture, were purchased for us by the Foundation. The selection was based on the condition of the paintings and sculpture as well as their aesthetic importance in reflecting successive stages in the development of Italian art. In solving the difficult installation of the ceiling we had the excellent cooperation of the architectural firm of Tucker & Shields. The installation is of necessity crowded and we consider that Mr. Rush H. Kress, Foundation Trustee, is justified in demanding that additional space must be available by 1955 when the deeds of gift will be distributed to the various museums receiving donations. An illustrated catalogue which we published at the opening of the exhibition describes in detail the objects and their significance. In recognition of the quality of this publication, Dr. Lee received a certificate of excellence from the American Institute of Graphic Arts.

Exhibitions

In celebration of Seattle's Centennial we were most privileged in being able to exhibit during the spring *Masterpieces from the Metropolitan Museum* comprising a brief survey of the paintings of the Renaissance and later, through some of its most important examples. The extremely high standard of the selection was possible due to the fact that the period coincided with the remodelling of some of the galleries of the great New York museum. The major schools were shown by famed works of the greatest artists. To mention a few, Italy was represented by Tintoretto, Veronese, and Tiepolo; Spain by El Greco, Zurbaran, Murillo, and Goya; Flanders by Hals, Rembrandt, and Rubens; France by Poussin, Cezanne, Degas, Manet, Monet, Courbet, and Corot; and our own country by Sully, Homer, Audubon, Inness, Ryder, and Cassatt. The large size of these paintings demanded the assignment of four galleries for their exhibition which we had the privilege of maintaining for four months.

The other two major painting and sculpture exhibitions which we brought to Seattle presented the historical background of contemporary art. *20th Century Master Movements: Cubism and Futurism*, came from the Museum of Modern Art and was shown in the spring, while in the autumn we had a two month exhibition on *Expressionism*. The latter presented a survey of the development and history of this movement through a selection of paintings and sculpture which we borrowed from important museums and collectors. This exhibition was augmented by a travelling one from the Museum of Modern Art on the same subject.

Through the generous cooperation of Mr. Mark Bortman of Boston we had the privilege of exhibiting a selection from his important collection of *Early American Silver* which included numerous examples of the work of Paul Revere.

Our changing exhibitions from the Museum collection were largely selected to illustrate the current lecture courses of the Guild. *The Art of India* was thus featured last spring and *The Early Art of China* this autumn. In the summer months coincident with the installation of the Kress Gallery in June, we devoted the rest of the Museum to a *Survey of the Art of the World through the Museum Collections*. In the autumn from our own collection we had an exhibition of European decorative arts of the Renaissance, followed by the December religious exhibition in recognition of the Christmas Season. During this period the Central Court was devoted to the display of objects illustrated in the Guild's 1953 engagement calendar.

A large proportion of the frequent gallery changes were as usual devoted to contemporary art. We exhibited an extensive selection of paintings from the Walnut Creek Festival in California and also a selection of paintings by Quebec artists which had been organized for museum circuit. The only two non-resident artists honored by one-man shows were Helene Schjerfbeck the great late Finnish artist for whom we had a memorial exhibition, and Mitchell Jamieson formerly of Seattle. Space permitted us to give only three local artists one-man shows. These were Edwin F. Danielson, Everett DuPen, and Arthur H. Hansen.

All Northwest artists, however, had the privilege of at least submitting their work for various annual exhibitions. Of these the *38th Annual Exhibition of Northwest Artists* was the most extensive and important. The Jury consisted of Mark Tobey, Seattle artist, chairman; Wendell P. Brazeau of the University of Washington; William Givler, Dean of the Museum Art School, Portland; James F. Peck of the Art Department of Cornish School, and myself in an ex-officio capacity. From over 600 entries the Jury selected 156 by almost an equal number of artists to permit as many as possible to be represented. In compliance with the policy adopted the previous year, 12 works were selected for purchase consideration. From these the Museum acquired James L. Hansen's "The Call" (bronze), Paul Horiuchi's "Dawn" (oil), and Alden C. Mason's "Deception Cove" (oil). The Purchase Fund was contributed by Margaret E. Fuller, Music and Art Foundation, Puget Sound Group of Northwest Painters, Seattle City Council of Beta Sigma Phi, Lowman & Hanford Company, Burnley School of Art and Design, Northwest Watercolor Society, Palette and Brush Club, and Seattle Co-Arts, bringing a total of \$640.

The only other annual exhibitions are sponsored by autonomous organizations which leave the Museum only the responsibility of hanging. These were the *12th Annual Exhibition of the Northwest Watercolor Society*, the *8th Annual Exhibition of High School Art Classes* sponsored by the Museum Guild, the *24th International North-West Printmakers Exhibition*, and the *10th International Exhibition of the Seattle Photographic Society*. For both the Northwest Watercolor Society exhibition and that of the Printmakers I represent the Museum in an ex-officio capacity on the Jury, and for the Seattle Photographic exhibit I have the selection of the purchase prizes which the Society donates to the Museum collection. That Society bears full responsibility for the receipt and dispersment of the great number of entries and thereby relieves the Museum staff of a heavy burden. We are most grateful to the exhibition committee under the chairmanship of Morton Cundy for the efficiency with which its members handled their responsibilities.

The Northwest Printmakers Purchase Prizes, for which the Museum is custodian, went to Vera Berdich for "Plan for Living," Leonard Edmondson for "Isolation of Attitude," Robert Huck for "Hunter," Edward Landon for "Lines and Forms," Danny Pierce for "Primeval Tapestry," Walter R. Rogalski for "Scorpion and Crab," and Janet E. Turner for "Guinea Fowl." Photographs by the following were selected for purchase by the Photographic Society: Charles Buker, Morton Cundy, Howard A. Hartman, George L. Kinkade, Leon L. Kotzebue, Carl B. Lewis, George J. Munz, Arthur F. Smethurst, T. V. Whitehouse. It is gratifying to note that four of these are Washington photographers.

Among our annual exhibitions mention should also be made of the one sponsored by the Men's and Women's Amateur Chrysanthemum Associations during one October week-end. The popular response to this exhibition and the financial return fully justifies the policy of assigning the Museum to these organizations for one week-end. We are most grateful to both Mrs. Erich Moritz and Mr. L. D. Kiernan, the presidents of these two organizations and to their many volunteer workers.

During the course of the year the collection of the Seattle Art Museum was represented in many exhibitions throughout the country. Thirty items were requested for the great Chinese ceramic exhibit at the Los Angeles County Museum, 15 for the Detroit Institute of Arts' Ming exhibit, 25 for Portland Art Museum's jewelry exhibit, 5 Chinese and Japanese ceramics for the Los Angeles County Fair's 1952 Clay Exhibit, as well as two drawing and print exhibitions in circuit by the Western Association of Art Museum Directors, and numerous individual items to other exhibi-

tions. There were five complete changes of objects in the case at the Rainier Club, and six exhibits at the Seattle Public Library. In all, over 500 items were in loan exhibits and more than 200 outside Seattle. This does not count our lending service of facsimilies from which 80 agencies borrowed 1347 painting facsimilies during the year.

Accessions

In accordance with our established practice of many years, the accessions will be reviewed chronologically commencing in Japan and moving westward through the cultures of the world. The additions to our Japanese collection have been relatively few. Two examples date from Proto-historic times of about the 3rd to 5th Century A.D. These consist of a pottery jar of the Joman period and a gilt bronze sword handle with opposing dragon heads. The next item dating from almost one thousand years later is a complete set of five scrolls of the famed Genji Monogatari. This is noted as the world's first novel and was written by a court lady at the beginning of the 11th Century to recount the achievements and love affairs of her princely husband Genji. It has 54 chapters, each illustrated with a painting (Fig. 1). This set by a Tosa School artist is unsigned and therefore presumably by one of the court artists who did not sign their names on royal assignments. It is exquisitely decorated and in perfect condition. It is considered to date from either the 16th or 17th Century. Although the story is the source of much Japanese art, very few complete sets of scrolls are known to exist.

As a token of appreciation for the cooperation of America, we received from Dr. Masatoshi Okochi two tea bowls which were included in the Japanese Exhibition in San Francisco at the signing of the Peace Conference. One of these is black raku (Fig. 2) and the other red raku ware. They both are by the famous potter Donyu who was active in the early 17th Century. We also acquired an exceptionally fine example of old Kutani ware in the form of a plate with landscape decoration (Fig. 3). This dates from about the beginning of the 18th Century. We are indebted to Miss Grace Denny for a small brocade temple runner of the 18th Century.

Our Chinese accessions were far more numerous. The earliest and most important item is a bronze ceremonial vessel called a p'an dating from the late Chou Dynasty, about 3rd Century B.C. (Fig. 4). It is most remarkable in the quality of its detailed decoration which so far as we know is unique in its standard. This has undergone the patination of the Huai Valley which causes the metal to be almost completely replaced. Several other items date from about

the same period: a pair of silver ring handles mounted in t'ao t'ieh masks, three bronze belt buckles with both scroll and punctuated designs in gold, and a large gilt one inlaid with turquoise. From Mrs. Stimson for the Thomas D. Stimson Memorial Collection we received a number of small items also of the late Chou Dynasty, namely a bronze hook inlaid with silver and gold, a bronze finial in the form of a tiger's head, and two bronze ornaments from the Ordos region of Siberia. From the Han Dynasty, or slightly later, about 3rd-4th Century A.D., may be dated a tomb sleeve weight of bronze in the form of a mountain with three chimeras. From Mrs. Stimson we also received three pieces of the T'ang Dynasty; a miniature double pottery vase, a gilt bronze silkworm, and a small bronze ram's head. This dynasty is also represented by an exceptionally well modelled gilt bronze demon of major importance (Fig. 5).

In the Sung Dynasty dating from the 10th-13th Century are two accessions; a Ying Ching porcelain saucer from Mrs. Stimson and a bronze water coupe in the form of a stylized bird inlaid with silver. The Ming Dynasty was represented by a number of small paintings by well established artists. Dating from the 16th and 17th Century are three fan landscape paintings by Ch'en Fu (1559), Sung Mou-chin (1619), and Hsiao Yun-ts'ung. Of about the same age is a landscape scroll by Ch'en Chi-ju, and a small folio painting of a lohan and dragon by an unknown artist.

We had two additions to our collection of Ch'ing Dynasty porcelain, one a coral red vase of the reign of K'ang Hsi (1662-1722), gift of Mrs. Alfred F. Woolsey; the other, a reticulated famille verte vase donated in memory of Dr. Walter F. Hiltner by his widow. We acquired two landscape paintings of this dynasty, one by K'un-Tsan dated 1661 and the other, a gift from Mr. and Mrs. Frank S. Bayley, Jr., is a small handscroll by Chang Tao-wu, dated 1793 (Fig. 6). The collection received two 18th-19th Century fan cases, one a gift from Mrs. E. W. Childs.

Our Korean collection received a single item, namely, a gilt bronze lacquered standing Buddha of the Silla Dynasty about 8th or 9th Century for the Thomas D. Stimson Memorial Collection. Several countries of south Asia were also represented by only single additions. To our Cambodian collection was added a small bronze Khmer Dynasty female figure of the 11th or 12th Century representing an undetermined divinity (Fig. 7). The Javanese collection received a 14th Century basalt relief representing a four armed Shivaitic deity of the Majapahit Dynasty (Fig. 8). Tibet was represented by a gilt bronze dancing figure of the 17th Century (Fig. 9), and Nepal by both a 13th or 14th Century standing Bodhisattva in ivory and a vigorous bronze interpretation

of Ganesha, the dancing elephant, of about the 15th Century (Fig. 10). Our most important accession of south Asia was a relatively large copper figure of a deified queen (Frontispiece). It is generally considered to be the finest known of its type. Our Indian accessions consist of an 18th Century Rajput miniature of the Busholi School representing Vishnu (Fig. 11) in "The Churning of the Sea of Milk" which was a gift of Dr. and Mrs. Sherman E. Lee, and two textile fragments from Miss Grace Denny.

Ancient Persia was represented by three items; a very fine Luristan bronze finial of about 1000 B.C., which was added to the Thomas D. Stimson Memorial Collection; a Seljuk bronze tripod in the form of three addorsed lions of about the 12th Century (Fig. 12), and a 14th Century miniature from a book of Shah Nama.

Moving westward we next come to Egypt where the earliest item is an alabaster head-rest of the Old Kingdom. Next in age is a very important but damaged heroic black granite head which probably represented Thutmose I about 1550 B.C. (Fig. 13). The later periods of Egyptian art received a fine small bronze figure of Ptah, the God of Thebes, a small ceramic head, and a bronze symbol of Hathor, the Cow Goddess. A large alabaster kalpis, which Egypt derived from the classic hydria, dates from the Ptolemaic Dynasty, 4th-1st Century B.C. The final item is a bronze Venus-Isis-Astarte, the Mother Goddess of the East in Roman times, of about the 3rd Century A.D. (Fig. 14). Our Greek collection was strengthened by two accessions, one a small black figured amphora dates from about 500 B.C., and the other, a red figured kotyle of the late 5th Century B.C. (Fig. 15).

The earliest addition to our European art is a gilt bronze crozier decorated with Limoges enamel of the 13th Century (Fig. 16). For this we are indebted to Mrs. Donald E. Frederick. Italy was represented by only one painting, namely, a fantastic shipwreck which is attributed to Valerio Costello, Genoa, 1625-56 (Fig. 17). This relatively little known young artist was the teacher of Magnasco's father. In it can be seen the origin of the spirited style of the later master. This painting was purchased through a bequest from Oliver T. and Carola Erickson and the anonymous gift of one of our good patrons. From western Europe the earliest addition is a colored woodblock of the Apocalypse from the Nuremberg Bible published in 1483 by Anton Koburger.

The greatest single accession of the year came to us through the bequest of the late LeRoy M. Backus and consisted of twenty drawings and two paintings. The paintings and seventeen of the drawings all represent Flemish, Dutch, and German art of the 15th and 16th Century and bring to our collection a wealth of material

in a field in which we had but slight representation. The paintings consist of a fragment of one by Pieter Bruegel the Elder (1525-69) (Fig. 18) depicting one of his characteristic scenes of dancing peasants; the other by the German artist Lucas Cranach the Elder (1472-1553) shows, in perfect condition, one of the finest versions of the Judgment of Paris (Fig. 19). Each drawing deserves to be mentioned in detail and I would if we had not already published an illustrated catalogue marking this noted event. German art is represented by excellent examples by Albrecht Altdorfer, Hans Baldung, Christian Brand, Albrecht Durer (Fig. 20), Erhard Schoen, the School of Martin Schongauer, and Johann Weyer; Flanders by Paul Bril, George Hufnagel, Cornelis Massys, and Peter Paul Rubens; while the Dutch masters consist of Jan van de Capelle, Jan van Goyen, Gerrit van Honthorst, Gabriel Metsu (Fig. 21), Adriaen Ostade (Fig. 22), and Pieter Saenredam. In addition the collection included a fine landscape drawing by Thomas Gainsborough (Fig. 23), a sketch of a beggar and dog by Goya (Fig. 24), and a drawing of a sculptor by Picasso (Fig. 25). In recognition of the magnitude of this gift, LeRoy M. Backus was enrolled posthumously as a Benefactor.

We are indebted to Mr. R. D. Merrill for our first painting by a great French master of the 19th Century, a rare and early watercolor landscape by Renoir (Fig. 26). In addition to previous gifts this entitled him to be enrolled as a Patron. The great innovator, Paul Klee, is represented by two small watercolors, "Temple Wandmalerei," a gift from Mr. and Mrs. Sidney Gerber, and "The Aquarium" (Fig. 27), from Mr. and Mrs. John H. Hauberg, Jr. The Gerbers also donated characteristic watercolor paintings by three well known Mexican artists, Charlot, Covarrubias, and Merida. Our other contemporary accessions were devoted essentially to Northwest artists. We acquired the watercolor "River Pattern" by Raymond Hill, "Self Portrait" in gouache by Mark Tobey as the gift of John L. Scott, a bronze head of a child by the late Virginia C. Pratt donated in her memory by her many good friends; and drawings by Kenneth Callahan, Mitchell Jamieson, and Margaret Tomkins.

Primitive arts were also not neglected. Our Pre-Columbian collection of Central American and Mexican art was greatly strengthened. Covering them geographically from the south, Panama was represented by two exceptionally well designed and vigorously painted ceramics from Cocle Valley, one a footed bowl (Fig. 28) and the other a zoomorphic vessel; Costa Rica by a Chorotegan pottery whistle in the form of a bird, and Nicaragua by a pottery tripod bowl with geometric design. From El Salvador came two painted Mayan vessels, and two of the Chichimec culture, one of

which is especially fine; and a few examples of early provincial work. From the Mayan civilization in northern Yucatan comes a pottery priest in the form of a rattle. Mexico is represented by an archaic pottery figure, a fine engraved Toltec vessel from Teotihuacan (Fig. 29), as well as a group of related study pieces which we received as a gift from Earl Stendahl. To our fine collection of Tarascan ceramics we added an exceptionally fine fluted pot with parrot legs (Fig. 30) and four very expressive figures, as well as a rare toy pottery dog on wheels. The Aztec civilization is represented by a strong standing figure of the Flower God (Fig. 31). To our collection of the art of the South Seas we added a characteristic architectural detail from the Maori civilization of New Zealand (Fig. 32). In African art we acquired a mask from the Bayaka tribe of Western Congo and a hard wood squatting fetish figure from the Bene Lulua tribe of Central Congo. Where not otherwise stated all the accessions were added to the Museum's Eugene Fuller Memorial Collection.

Library

By purchase and gifts the Library received 176 volumes bringing the total to 4,165, while the collection of 2 inch slides was increased by over 400 giving us a total of over 13,400, in addition to nearly 8,400 standard slides. This does not include several hundred slides of European architecture which we received from Miss Joanna Eckstein, as these at the end of the year were yet to be mounted and labelled. Of the numerous donors to the Library special mention should be made of Mr. Bernard Freyd who this year contributed no less than 36 books especially selected to fill gaps. Of our purchases the most important is a complete set of the *Bulletins of the Museum of Far Eastern Antiquities in Stockholm* and a set of volumes on *Yun-Kang, Buddhistic Cave Temples of the 5th Century A.D. in North China* giving copious photographs of an important region no longer accessible. The use of the Library for docent training has increased to a marked degree. The Library plays an essential part in the administration of the Museum and also is widely used by the various departments at the University of Washington, as well as the public and private schools, and various clubs in the city and throughout the state.

In our lending library of 16 mm. films we now have only 62 titles. During the year these had 258 bookings with various organizations throughout the Northwest. Most of these films survive from those prepared by the Office of the Coordinator of Inter-American Affairs and were lent to us by the State Department; while some have been donated by our major industries to show

international aspects of their business. As the films wear out and are withdrawn this phase of our service gradually decreases.

Education

Mr. Edward B. Thomas, as Curator of Education, was responsible for a wide variety of activities which greatly extended the influence of the Museum throughout the community. The mediums used included lectures, talks, moving picture programs, and exhibitions, as well as radio and television programs. The latter responsibility fell on his shoulders and those of Mr. Rogers with Mrs. A. M. Young's illness in the autumn. It is most gratifying to record that Mrs. Young's inspiring television programs brought to KING's Community Workshop an important national award as a well deserved culmination of her twenty-five years of service to the Museum.

During the year Mr. Thomas presented 140 lectures and programs of which 49 were outside the Museum. This does not include the weekly Story Hour for which he had the generous cooperation of the Seattle Junior League in financing the rental of films and the personal service of Mrs. David Stimson and other members of the League in administering the programs. The other principal regular programs were for the P.T.A. and the Girl Scout Leaders, both of which were increasingly popular. In the Museum tours he had the cooperation of the Guild Docent Committee which this year had the advantage of some excellent art films purchased through an anonymous gift for their use.

He inaugurated a Children's Corner exhibition at one end of the print room and continued the educational exhibitions at the Public Library. In addition he was responsible for various small educational exhibitions both for the University of Washington and the Civic Auditorium. He also represented the Museum on a number of civic and state organizations devoted to adult education and served on various juries. His most important honor was that of being the principal speaker at the joint conference of the Western College Art Association and the Washington Art Association at Pullman.

Museum Guild

1952-53

The calendar year always includes two regimes of the Museum Guild. The previous report reviewed the many activities of the 1951-52 season under the fine leadership of Mrs. Ray Murray II.

This report is therefore confined to the current administration which came into office in May 1952 under the able chairmanship of Mrs. Alan B. Sheldon. Aside from her many duties, Mrs. Sheldon was largely responsible for the much needed redrafting of the Guild by-laws.

The Museum Guild series of lectures was conducted on the second and fourth Tuesdays of each month. For the morning series Mr. Rogers and I lectured on *The Early Art of China*. In the afternoon the program was devoted to *Highlights of American Art Museums*, a brief survey of the major museums in various sections of the country. This program was under the most efficient chairmanship of Mrs. Brian Wattleworth and with few exceptions these lectures were presented by Guild members.

The Docent Committee, under the excellent chairmanship of Mrs. Dorothy Fincke Lahr, was very active and conducted nearly 5,000 visitors through the galleries. Special mention should be given to Mrs. V. L. Georgeson who was chairman of the training talks for docents and Mrs. R. William Elam who organized their study program. The fine standard established in recent years by Mrs. Sheldon was very well maintained.

The Membership Committee under the leadership of Mrs. Bryant Dunn as usual rendered great service. The Public Relations Committee under Mrs. Frank Dearborn extended our contacts through entertaining 23 organized groups at tea. These brought in a total attendance of 4,450. The organizations entertained contributed nearly \$1,000 to cover cost of refreshments. The Project Committee under Mrs. Miller Munson devoted its major activity to the printing and sale of the Seattle Art Museum Guild Engagement Calendar. The sale of almost 4,000 copies brought to the Museum a profit of nearly \$2,000 and at the same time was responsible for excellent publicity. The committee inaugurated this important project although the Museum staff was responsible for the selection of the objects as well as the text and layout.

The School Lecture Committee under Mrs. Carl L. Swanson organized a Treasure Chest project for third grade school classes. They visited 21 groups of about 70 children each. The details for the 9th Annual High School Art Exhibit have been arranged under the chairmanship of Mrs. James A. Burns.

Mrs. James Vernon Metcalfe served as chairman of the Tuesday Hospitality Committee which is of great importance at the regular meetings. The same committee planned and served with the aid of their husbands the Christmas supper for over 400 foreign students from the University of Washington, Seattle University, and Seattle Pacific College. This important event gave

the students the opportunity also of meeting the heads of the different organizations or their representatives as well as the Mayor of the City. For this outstanding event Mr. and Mrs. Ray Murray II served as chairmen with the assistance of Mr. and Mrs. Bryant Dunn.

The Guild's activities brought to the Museum excellent publicity through the effort of Mrs. Grant I. Butterbaugh who submitted about 70 articles. Mrs. Ray Murray II was in charge of the radio programs on which the Guild lecture speakers for the Tuesday afternoon series were interviewed.

Lectures and Concerts

This year, during our active exhibition period, we have had lectures by staff members on the second Thursday of each month. Four lectures were given by Sherman E. Lee, two by Millard B. Rogers, and two by Edward B. Thomas. In the spring we had the privilege of presenting Prof. Yukio Yashiro in a lecture on "Scroll Paintings of the Far East." In conjunction with the University of Washington we were co-sponsors for a series of three lectures on Mexican art by Dr. Pal Kelemen. These were presented at the Health Sciences Auditorium and covered the art of that country from Pre-Columbian times through the Colonial times. While Dr. Nihar-Ranjan Ray was at the University as a Walker-Ames lecturer, we had the good fortune of presenting him in our auditorium in two lectures, one on the painting of India and one on its sculpture. We also collaborated with the University in co-sponsoring a symposium on Leonardo da Vinci over a period of two weeks in recognition of his Quincentennial. In this symposium Millard Rogers spoke on *Leonardo the Artist*. In December, coincident with the exhibition of the Bortman Collection of Early American Silver, Miss Jane Bortman generously contributed her services for a lecture on that subject.

Under the direction of Mr. Francis Armstrong we presented four Chamber Music Concerts for our members, two in the spring and two in the autumn. We also had in our auditorium ten Chamber Music Concerts open to the public on Sunday afternoons through the generous cooperation of the Music Performance Trust Fund of the Recording Industry.

Creative Classes

In January Mrs. Howard S. Lease reactivated and enlarged a program of creative activities for children which she had inaugu-

ated several years ago. This comprises dramatics, dancing, painting, and this autumn through the generous cooperation of Prof. Glenn Hughes, a class in play writing was also included. In this activity the Museum was used largely as an experimental workshop to demonstrate the importance of creative expression in the training of youth. The lack of adequate facilities permits the accommodation of only very limited classes so that the results are largely a demonstration emphasizing the need of such education in this community. In this fine work Mrs. Lease has had the very able assistance of Miss Agnes Haaga, Mrs. Jack Claypool, and Mrs. Stephen Herron, with Mr. Walter Froelich of our staff teaching painting.

Architecture Tour

The 3rd Annual Architecture Exhibit on May 1st proved amazingly successful and was directly responsible for the solvency of our general fund during the summer months. It brought to the Museum the most welcome sum of \$5,133, thanks to the initiative and efficiency of the many committees and the generosity of those who opened their homes for the tour and tea. The homes, illustrating the theme *Today's Northwest Architecture in Windermere on the Lake*, were those of Mr. and Mrs. J. E. Blume, Mr. and Mrs. O. Ross Brownfield, Mr. and Mrs. Fred Drury, Mr. and Mrs. L. H. Fortin, Mr. and Mrs. M. Lester Graham, Mr. and Mrs. Lloyd Johnson, Mrs. J. A. McEachern, Mr. and Mrs. Cliff Mortensen, Mr. and Mrs. Ernest N. Patty, Mr. and Mrs. Edward L. Rosling, Mr. and Mrs. Irving Stanton Smith; and for tea, those of Mr. and Mrs. Newman Hall Clark, Mr. and Mrs. Lloyd Nordstrom, Mrs. Letha Woodley.

We are also indebted to no less than 500 who contributed their services or goods, but especial mention should be made of the very capable committee chairmen: Mrs. Phillips Dickinson, General Chairman; Mrs. Herbert Brink, who initiated the project and served as Liaison Chairman; Mrs. Richard Buschmann, Tickets; Mrs. Lance E. Gowen, Patronesses; Mrs. Bryant Dunn, Hostesses; Mrs. Rolf Eggers, Publicity; Mrs. Richard E. Fuller, Flower Arrangements; Mrs. Roy Correa, Signs and Posters; Mrs. Archibald Hutchinson, Properties; Mrs. W. Norman Piggott, Ticket Preparation and Radio; Mrs. William Rourke, Transportation; Mrs. Vernor Fitzgerald, Cashiers; and Mrs. Allen Green, Jr., General Tea Chairman.

Staff Changes

In the summer Dr. Sherman E. Lee resigned as Associate Director to become the Curator of Oriental Art at the Cleveland

Museum. During his four years in Seattle his wide scholarship contributed greatly to the growth of the Museum. He was responsible for the publication of our Handbook and the catalogues as well as for professional articles on various items in the collection. We were fortunate in the fact that Mr. Millard B. Rogers was available in the early autumn to join our staff as Assistant Director. Mr. Rogers has an excellent academic background in both European and Asiatic art and had recently returned from a very extensive tour of south Asia which had given him intimate knowledge of that region. He is well qualified for taking over Dr. Lee's lecture courses at the University. He brought with him an extensive Oriental library and a very large collection of excellent color slides of many great Asiatic sites.

The summer also saw the retirement of Mr. Albert B. Faris who had been custodial engineer of the building since it opened and for most of that time the Chief. He had been largely responsible for establishing the notably high standard in which the building has been maintained. Through the generous cooperation of his many friends among our members we were able to give him a parting check which was of great assistance to him in establishing his home in Hawaii. We were most fortunate in having his place taken by Mr. George Haslam who has been on the City staff for the past six years. He has passed his civil service examination and is now officially appointed as Chief Custodial Engineer, a position for which he is excellently qualified.

Twenty-five years ago, when our organization was still the Seattle Fine Arts Society, Mrs. A. M. Young joined our staff. Since then she has been our principal spokesman and as our Educational Director has played a vital part in the growth of our organization and the scope of its influence in the Northwest. Ill health had caused her to relinquish her duties to serve only as the Educational Consultant. Now on the advice of her physician she has retired from our staff. We are most fortunate that in the meantime Mr. Edward B. Thomas has been taking over her responsibilities as our Curator of Education, and is doing excellent service both for the Museum and the community.

Maintenance and Equipment

As usual we are grateful to the Park Board for maintaining the building in its usual high standard. This year the additions to our equipment were essential expenditures of our own organization. To aid in exhibitions we had constructed two 8 ft. cases for the display of scroll paintings. To assist in the installation of exhibitions and especially the handling of sculpture we purchased a hand

truck with a hydraulic lift as well as a larger moveable automatic hoist. To simplify the mailing of our monthly News Letter we acquired a folding machine. We purchased 24 cases for drawings and prints for our storage, a card file for our catalogue, four electric fan heaters to make our basement addition more habitable, and tables for the children's creative painting classes.

Publicity and Bond Issue

Again we are most grateful to both the Seattle Times and the Seattle Post-Intelligencer for the publicity which we have received. Both papers played an essential part in the success of the Architecture Exhibit. They were very generous in the support of our attempt to bring about the passage of the Park Department Bond Issue which included \$500,000 for an addition to the Art Museum. The plan developed by the firm of Young and Richardson, Carleton and Detlie was designed to meet not only our own needs for additional gallery and storage space but also the requirements that would be involved in the sponsorship of the creative activities which were inaugurated by Mrs. Lease. The new auditorium was intended also to meet the needs of Junior Programs and many civic groups. Although the bill received a favorable majority it failed to receive the necessary 60%.

Our weekly broadcasts continue to be one of our most important contacts with the public. With Mrs. Young's illness the responsibility for these was taken over in the autumn by Mr. Thomas with the assistance of Mr. Rogers. The same program is presented by tape recording on both KJR and KXA. The KING Television program of the Community Workshop has proven especially successful. We are most grateful to all three stations.

During the course of the year we had three major publications aside from our usual News Letter and Annual Report. These were the catalogue of the Backus Collection and the catalogue of the Kress Collection, both completely illustrated, and the Guild's 1953 Engagement Calendar. For the layout of these publications Dr. Lee was largely responsible.

The election of Mr. Thomas Pelly to the House of Representatives resulted in his resignation from our Board of Trustees at the close of the year. His place was not filled until after the end of the year so his successor belongs in next year's report.

Future Plans

We have to a large measure achieved our purpose of building a collection which permits us to demonstrate the creative artistic

history of mankind with original material of supreme quality. Although the lack of adequate funds has kept us from some important fields, we have with the good help of our friends been more successful in achieving our goal than I would have thought possible a few years ago.

In storage a collection is of value only to a few scholars. To be of real educational service to the schools and to the community it must be displayed. Only during some summer months does our exhibition schedule relax sufficiently to permit all of the galleries to be devoted to the display of the Museum collection. Even then we can show only a relatively small survey of the historical scope of our material. At that time the schools unfortunately are closed. Additional gallery space is essential to permit us to present constantly a brief changing survey of world history without interfering with our normal exhibition schedule which also must be maintained to serve the community and its artists.

Plans have been developed for an extension to the south to serve the Museum's needs for gallery, activity, and storage space. The scheme is more modest than the previous one and more feasible. Any physical move this year is impossible owing to the great Japanese exhibit which we will be showing this summer, but in the following summer the construction of an addition to the north is essential for the Kress Collection. I trust that at that time funds will also be available to permit us to achieve our goal to the south as well. In this endeavor we will need the cooperation of many of our fellow citizens.

It is most gratifying to acknowledge the initial major gift to the Building Fund of \$5,000 from Mr. and Mrs. Walter L. Wyckoff. This entitled them to be enrolled as Patrons. Mr. Raymond G. Wright also attained this class of membership through his faithful support for many years.

In closing I wish again to thank our loyal members and donors, who are essential to the life of our organization and to express my gratitude to my fellow workers of the staff for their service and initiative which contribute vastly to the success of the Museum.

RICHARD E. FULLER
President and Director

FINANCIAL REPORT

AUDITORS' CERTIFICATE

We have examined the accounts of the SEATTLE ART MUSEUM for the calendar year 1952, and have prepared the attached statements which, in our opinion, correctly set forth the financial affairs of the Museum at December 31, 1952, and the results of its operations for the year then ended.

The Museum operates on a strictly cash basis and makes no effort to attach values to its acquisitions or equipment. Accordingly, assets of considerable value such as the library, the art collection, and the furniture and equipment do not appear upon the balance sheet.

Securities in the Founders' Endowment Fund and in the Margaret E. Fuller Fund, which are shown on the balance sheet at values when acquired, a total of \$343,528.28, had market values of \$518,426.50 at December 31, 1952.

MEALS & COMPANY,
Certified Public Accountants

Seattle Washington
February 26, 1953

BALANCE SHEET—DECEMBER 31, 1952

ASSETS

CASH IN BANKS AND ON HAND:

Petty Cash	\$	25.00	
National Bank of Commerce—checking		7,342.98	
National Bank of Commerce—savings.....		7,343.34	
Seattle Trust and Savings—savings.....		84.58	
National Bank of Commerce—checking, Lecture Fund	\$	13.33	
Film Fund		644.11	657.44
Total Cash			\$ 15,453.34

NEGOTIABLE SECURITIES:

At market values when gifted; at cost when otherwise acquired			
Founders' Endowment Fund (present market value \$72,870.25)	\$	52,558.46	
Margaret E. Fuller Endowment Fund (present market value \$445,556.25)		290,969.82	343,528.28
			<u>\$358,981.62</u>

LIABILITIES

NOTES PAYABLE:

National Bank of Commerce.....	\$	7,000.00
--------------------------------	----	----------

SURPLUS

OPERATING FUND	\$	5,896.25	
DANIEL COGSWELL MEMORIAL LECTURE FUND.....		13.33	
FILM FUND		644.11	
FOUNDERS' ENDOWMENT FUND.....		53,206.19	
MARGARET E. FULLER ENDOWMENT FUND.....		292,221.74	351,981.62
			<u>\$358,981.62</u>

OPERATING FUND STATEMENT
CALENDAR YEAR 1952

RECEIPTS:			
Memberships		\$ 26,625.00	
Dividends, Founders' Endowment Fund.....		2,840.00	
Dividends, Margaret E. Fuller Endowment Fund.....		22,427.50	
Unrestricted Gifts		18,404.86	
Commissions, interest and miscellaneous income.....		2,216.81	
		<u>72,514.17</u>	
DISBURSEMENTS:			
Salaries	\$ 35,765.50		
Exhibitions	16,369.43		
Publications	1,978.87		
Administration	4,250.02		
Pensions and medical coverage.....	2,922.33		
Equipment and maintenance.....	1,982.04		
Library	1,848.59		
Concerts and film programs.....	838.98		
Travel expense	840.79		
Telephone and telegraph.....	1,524.76	68,321.31	
Excess of Receipts over Disbursements.....		<u>4,192.86</u>	
OTHER INCOME AND DISBURSEMENTS:			
Special Gifts	\$ 13,632.00		
Special disbursements:			
Japanese show	\$ 7,048.22		
Remodelling for Kress display..	7,005.50		
Building additional plans.....	2,600.00		
Publicity for bond issue.....	3,000.55		
Retirement pay—A. B. Faris....	2,202.00	21,856.27	
Excess of disbursements.....		<u>8,224.27</u>	
NET EXCESS OF DISBURSEMENTS OVER RECEIPTS.....		<u><u>4,031.41</u></u>	

CASH RECEIPTS AND DISBURSEMENTS
CALENDAR YEAR 1952

	Cash Balance 12-31-51	Receipts	Disbursements	Cash Balance 12-31-52
FOUNDERS' ENDOWMENT FUND.....	\$ 600.24			
Gift		\$ 25.00		
Sale 50 rights Bristol Myers.....			16.56	
Sale 2/5 rights Pacific Gas & Electric			1.16	
Sale of Museum handbooks.....			623.28	
Purchase 8/20 shares Colgate Palmolive			\$ 18.26	
Purchase 20 shares Pacific Gas & Electric.....			600.25	\$ 647.73
MARGARET E. FULLER ENDOWMENT FUND	\$ 656.99			
Sale 400 rights American Tobacco			443.43	
Sale 800 rights American Can....			151.50	1,251.92
DANIEL COGSWELL MEMORIAL FUND	\$ 13.33			13.33
FILM FUND	\$ 1,074.73			
Film purchases			430.62	644.11
OPERATING FUND	\$ 9,927.66			
Receipts per statement,				
Regular		72,514.17		
Special		13,632.00		
Disbursements per statement,				
Regular			68,321.31	
Special			21,856.27	5,896.25
BORROWED FUNDS				
Bank Loan		7,000.00		7,000.00
	<u>\$12,272.95</u>	<u>\$94,407.10</u>	<u>\$91,226.71</u>	<u>\$15,453.34</u>

CONCERTS, LECTURES

- January 20.....Sunday Chamber Music Concert
 February 17.....Sunday Chamber Music Concert
 March 6....."The Pageant of Venetian Painting," Dr. Sherman E. Lee
 March 23.....Sunday Chamber Music Concert
 March 30....."Scroll Painting of the Far East," Prof. Yukio Yashiro
 April 2....."Masterpieces of Pre-Columbian Art," Dr. Pal Kelemen
 April 3....."Revolutions in French Painting," Edward B. Thomas
 April 9....."Colonial Art in Latin America," Dr. Pal Kelemen
 April 16....."Art History for Americans," Dr. Pal Kelemen
 April 24.....Chamber Music Concert for Members
 April 27.....Sunday Chamber Music Concert
 May 1....."American Paintings in the Metropolitan Exhibit," Dr. Sherman E. Lee
 May 15.....Chamber Music Concert for Members
 May 17....."The Wonderful Tang," play by Queen Anne High School Students
 June 5....."Flemish and Spanish Paintings in the Metropolitan Exhibit," Dr. Sherman E. Lee
 June 7....."Bertha Goldfoot," play by University of Washington Children's Theatre Group
 June 26....."The Samuel H. Kress Collection," Dr. Sherman E. Lee
 "Tiepolo Skies," sound film
 July 17....."The Evolution of the Buddha Idea and Image in India," Dr. Nihar-Ranjan Ray
 July 24....."Ancient Paintings of India," Dr. Nihar-Ranjan Ray
 October 9....."A Trip Up the Kansu Corridor," Millard B. Rogers
 October 12.....Sunday Chamber Music Concert
 October 23.....Chamber Music Concert for Members
 November 2.....Sunday Chamber Music Concert
 November 12.....Symposium on Leonardo Da Vinci
 November 13....."Queen Xenobia's Capitol, the Western Anchor of the Silk Route," Millard B. Rogers
 November 15....."Johnny Appleseed," play by Seattle Junior League
 November 16.....Sunday Chamber Music Concert
 November 17....."Contributions of Leonardo to Medicine," Dr. Giacomo Pirzio-Biroli
 November 20.....Chamber Music Concert for Members
 November 30.....Sunday Chamber Music Concert
 December 4....."Early American Silver," Miss Jane Bortman
 December 11....."Expressionism: Emotion in Paint on Canvas," Edward B. Thomas
 December 21.....Sunday Chamber Music Concert
 December 28.....Sunday Chamber Music Concert

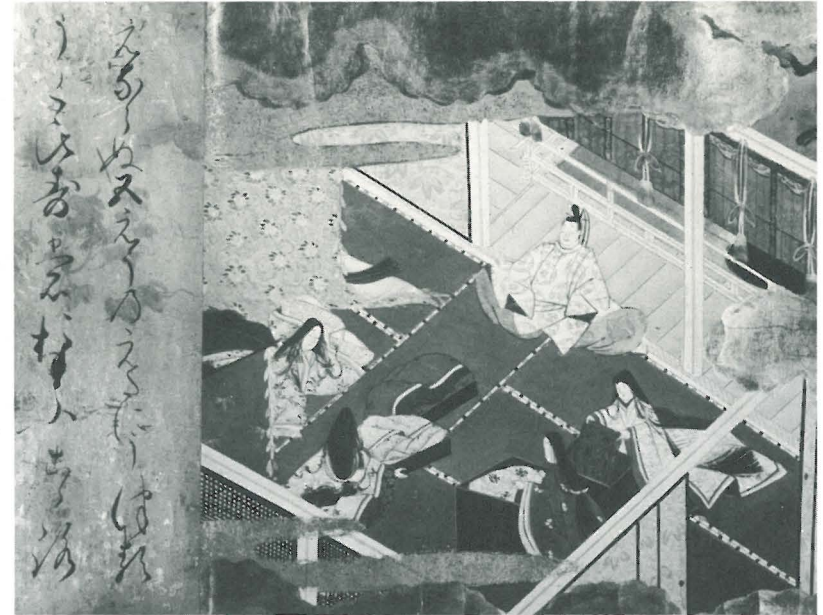


FIG. 1. Detail: *Gengi Monogatari* hand scroll (color on paper); Japanese, 16th or 17th century; H. 10½ in. (J32.55). Eugene Fuller Memorial Collection.



FIG. 2. Raku tea bowl (stoneware) by Donyu (1599-1656); Japanese, 17th century; H. 3¾ in. (J22.4). Gift of Dr. Masatoshi Okochi.



FIG. 3. Kutani plate (porcelain); Japanese, 17th-18th century; Diam. 12 $\frac{3}{8}$ in. (J27.8). Eugene Fuller Memorial Collection.



FIG. 4. P'an (bronze); Chinese, Late Chou (3rd century B. C.); Diam. 11 $\frac{1}{2}$ in. (Ch6.105). Eugene Fuller Memorial Collection.



FIG. 5. Demon (gilt bronze); Chinese, late T'ang dynasty (618-906 A. D.); H. 3 $\frac{1}{4}$ in. (Ch11.33). Eugene Fuller Memorial Collection.



FIG. 6. Detail: Landscape hand scroll (ink and color on paper) by Chang Tao-wu, dated 1793, Chinese; H. 13 $\frac{1}{4}$ in. (Ch32/C3628.1). Gift of Mr. and Mrs. Frank S. Bayley, Jr.



FIG. 7. Female figure (bronze);
Cambodian, 11th or 12th century
A. D.; H. 5 in. (FIN11.12).
Eugene Fuller Memorial
Collection.



FIG. 8. Relief (basalt); Java, 14th
century A. D.; H. 21¾ in. (FIN11.11).
Eugene Fuller Memorial
Collection.



FIG. 9. Dancing figure (gilt bronze);
Tibet, 17th century; H. 5¼ in.
(CAS11.3). Eugene Fuller
Memorial Collection.



FIG. 10. Dancing Ganesha
(bronze); Nepal, 15th century;
H. 6¾ in. (CAS11.4), Eugene
Fuller Memorial Collection.

FIG. 11. *Rajput miniature (color on paper); India, Busholi School, early 18th century A. D.; H. 8¼ in. (In36.15). Gift of Dr. and Mrs. Sherman E. Lee.*



FIG. 13. *Head of a King, probably Thutmose I (black granite); Egyptian, c. 1550 B. C.; H. 11½ in. (Eg11.38). Eugene Fuller Memorial Collection.*



FIG. 12. *3-Lion pedestal (bronze); Seljuk, c. 12th century; H. 7 in. (Is6.13). Eugene Fuller Memorial Collection.*



FIG. 14. *Venus-Isis-Astarte figure (bronze); Romano-Egyptian, 3rd century A. D.; H. 17⅞ in. (Cs11.25). Eugene Fuller Memorial Collection.*



FIG. 15. Red figured Kotyle (pottery); Greek, late 5th century B. C.; H. 7 $\frac{3}{8}$ in. (Cs20.17). Eugene Fuller Memorial Collection.

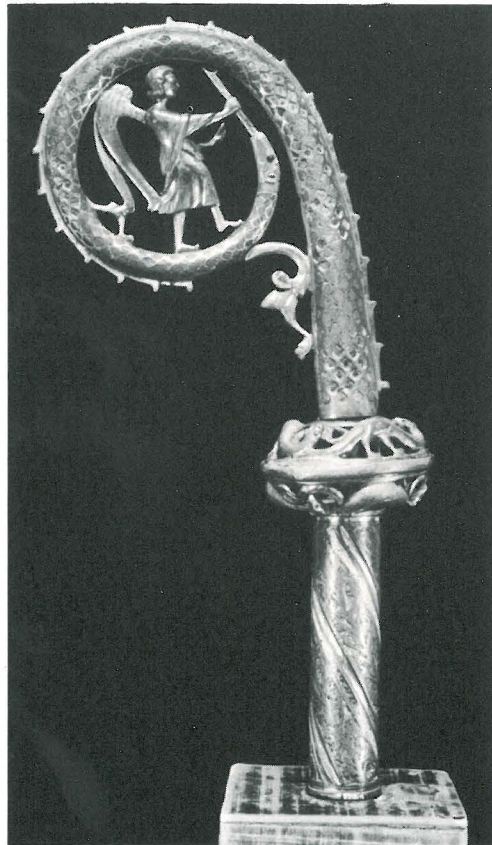


FIG. 16. Crozier end (Limoges enamel); French, c. 1200 A. D.; H. 12 $\frac{3}{4}$ in. (Fr5.4). Gift of Mrs. Donald E. Frederick.

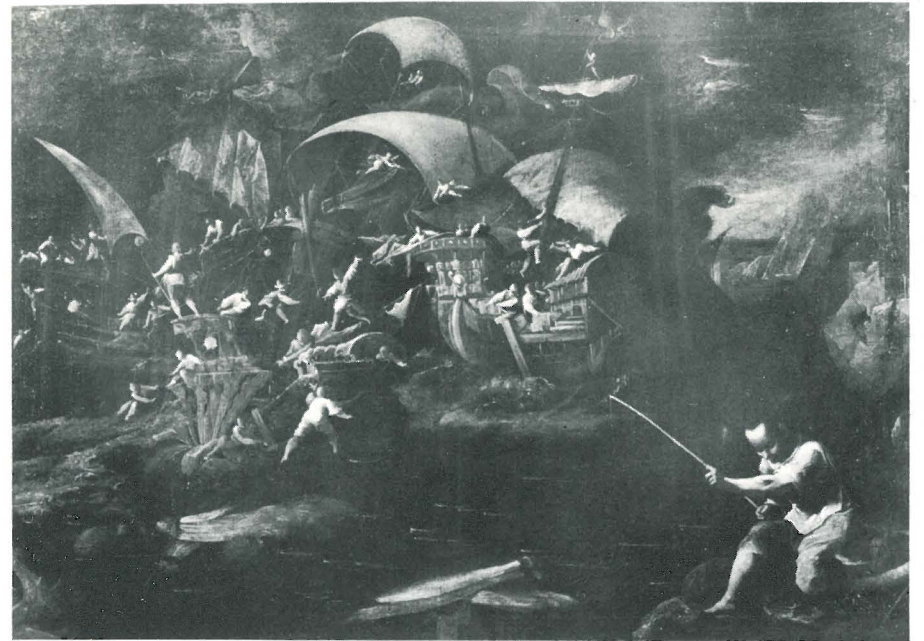


FIG. 17. Fantastic shipwreck scene (oil on canvas) by Valerio Castello (?) (1625-1659), Italian; H. 31 $\frac{1}{2}$ in. (It31/C277.1). Purchased through the Oliver T. and Carola Erickson bequest.



FIG. 18. Dancing Peasants (tempera and oil on wood panel) by Pieter Bruegel the Elder (1525-1569), Flemish; H. 16 $\frac{1}{8}$ in. (F32/B832.1). Le Roy M. Backus Collection.

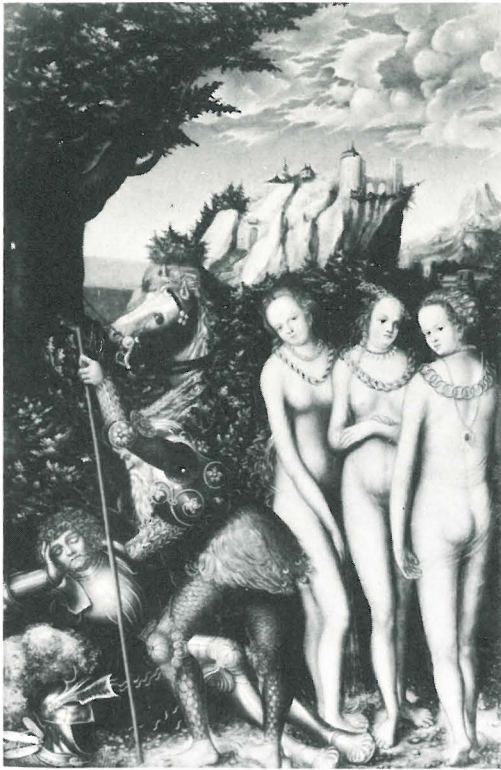


FIG 19. *The Judgment of Paris* (tempera on wood panel) by Lucas Cranach the Elder (1472-1553), German; H. 25 in. (G32/C850.1). Le Roy M. Backus Collection.



FIG. 21. *Young Woman holding a Book of Music* (crayon heightened with white on blue paper) by Gabriel Metsu (1629-1667), Dutch; H. 13 $\frac{3}{8}$ in. (D30/M5657.1). Le Roy M. Backus Collection.



FIG. 20. *Madonna and Child* (brown ink on paper) by Albrecht Durer (1471-1528), German; H. 7 $\frac{7}{8}$ in. (G30/D932.1). Le Roy M. Backus Collection.



FIG. 22. *Peasant and Boy* (pen and wash on paper) by Adrien Ostade (1610-1685) or Isaak Ostade (1621-1649), Dutch; H. 3 $\frac{1}{4}$ in. (D30/Os75.1). Le Roy M. Backus Collection.



FIG. 23. *Landscape: Norwich (?)* (crayon, chalk, and wash on gray paper) by Thomas Gainsborough (1727-1788), English; H. 9 in. (B30/G128.1). Le Roy M. Backus Collection.



FIG. 24. *Beggar and Dog* (red chalk on paper) by Francisco Jose de Goya (1746-1828), Spanish; H. 7 $\frac{1}{8}$ in. (Sp30/G748.1). Le Roy M. Backus Collection.



FIG. 25. *The Sculptor* (ink on paper) by Pablo Picasso (1881-), Spanish; H. 12 $\frac{1}{2}$ in. (Sp30/P581.1). Le Roy M. Backus Collection.



FIG. 26. *Landscape* (transparent watercolor on paper) by Pierre Auguste Renoir (1841-1919), French; H. 11 in. (Fr32/R293.1). Gift of R. D. Merrill.

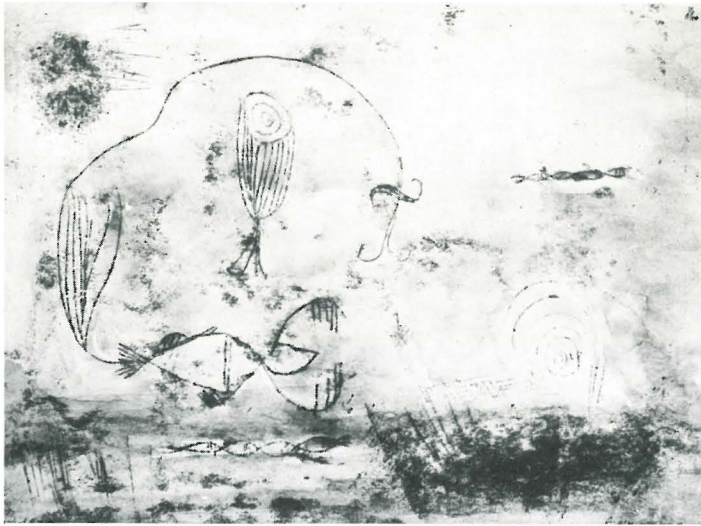


FIG. 27. *The Aquarium* (transparent watercolor on paper) by Paul Klee (1879-1940), dated 1921, Swiss; H. 9 $\frac{5}{8}$ in. (Sw32/K6720.2). Gift of Mr. and Mrs. John H. Hauberg, Jr.



FIG. 28. *Footed bowl* (pottery); Panama, Pre-Columbian, Coclé Valley Culture; H. 6 $\frac{5}{8}$ in. (PC20.51). Eugene Fuller Memorial Collection.



FIG. 29. *Tripod funerary urn* (pottery); Mexico, Pre-Columbian, Toltec; H. 6 in. (PC20.50). Eugene Fuller Memorial Collection.

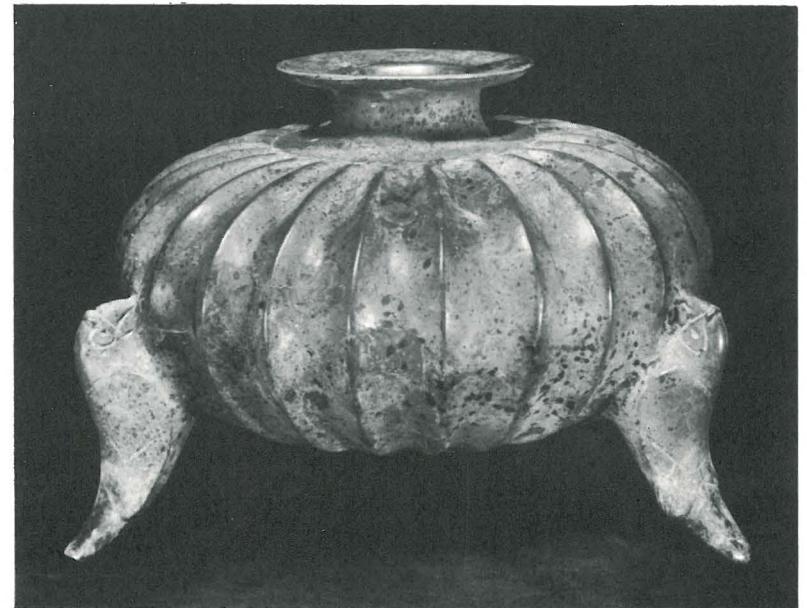


FIG. 30. *Fluted pot* (pottery); Mexico, Pre-Columbian, Tarascan; H. 8 $\frac{3}{4}$ in. (PC20.53). Eugene Fuller Memorial Collection.



FIG. 31. Flower God (stone); Mexico, Pre-Columbian, Aztec; H. 18½ in. (PC11.11). Eugene Fuller Memorial Collection.

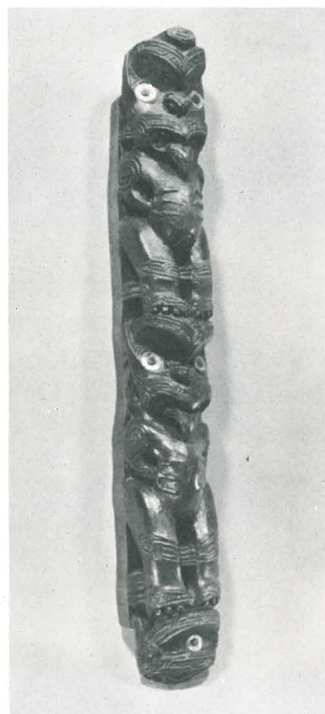


FIG. 32. Architectural fragment (wood); New Zealand, Maori culture; H. 33 in. (Pa14.1). Eugene Fuller Memorial Collection.

SCHEDULE OF EXHIBITIONS FOR THE YEAR 1952 IN ADDITION TO THE PERMANENT COLLECTION

January 9-February 3

LeRoy M. Backus Collection†
Walnut Festival Art Show
Puget Sound Group of Northwest Painters*
Helene Schjerfbeck Memorial Exhibition (A.F.A.)
Chinese Art of the 18th Century†
Ancient and Medieval Indian Art†
Gothic and Renaissance European Art†
Facsimilies of Old Master Drawings†
Masterpiece of the Month—"Sketches of a Lioness" (drawing) by Eugene Delacroix†

February 6-March 2

1951 Accessions to the Museum Collection†
Recent Quebec Painting (W.A.A.M.D.)
Paintings by Arthur H. Hansen*
Old Master Prints from the Manson F. Backus Collection†
Photographs of Indian Architecture†

March 5-April 6

Masterpieces from the Metropolitan Museum of Art (through June 15)
24th International Exhibition of Northwest Printmakers*
1951 Chinese and Japanese Accessions (continued)†
Purchase Prize Prints from previous Northwest Printmakers Annuals
Masterpiece of the Month—Head of Tut-ankh-Amun (granite) Egyptian, New Kingdom†

April 9-May 4

20th Century Master Movements: Cubism and Futurism (M.M.A.)
10th International Photographic Salon (Seattle Photographic Society)*
European and Asiatic Paintings, Ceramics, Sculpture†
Northwest Artists Paintings†
13th Annual Newspaper National Snapshot Awards (Eastman Kodak and Seattle Times)
Masterpiece of the Month—"Forms Follow Man" (tempera) by Mark Tobey†

April 5 and 6

Camellia Show (sponsored by Amateur Gardeners)

May 7-June 1

12th Annual Exhibition of Watercolors (Northwest Watercolor Society)*
8th Annual High School Art Exhibit*
Paintings and Drawings by Edwin F. Danielson*
Study Exhibition: Facsimilies of paintings by artists represented in the Masterpieces from the Metropolitan Art Exhibition†

Masterpiece of the Month—"Fourmast Barque" (watercolor) by Lyonel Feininger†

May 26-June 1

Work of Children's Creative Painting Class*

June 24-October 5

Italian Painting and Sculptures, Samuel H. Kress Collection
A survey of the Art of the World Through the Museum's Collections†

October 8-November 2

38th Annual Exhibition of Northwest Artists*
Art of China—Neolithic through late Chou Dynasty†
Exhibit Illustrating the Museum's Educational-Recreational Activities for Children
New Trends in Weaving (Oct. 17-27) (arranged by the Seattle Weavers' Guild)
Children's Corner—"Masks from Many Lands"†
Masterpiece of the Month—Marble Fragment from the Hall of 100 Columns at Persepolis in Persia, 460 B.C.†

October 24-26

11th Annual All Amateur Chrysanthemum Show (Men's and Women's Amateur Chrysanthemum Assns. of Seattle)

November 5-30

Expressionism (Lent by American Museums, Galleries, and Collectors) (thru January 4)
Paintings by Mitchell Jamieson (Maynard Walker Gallery)
Sculpture by Everett DuPen*
American Sculpture (thru January 4)†
18th Century European Decorative Arts†
Paintings and Drawings by Leonardo da Vinci (facsimilies)†
Photographs Purchased from Seattle Photographic Society's International Salons†
"Calendar Court"
Study Exhibit of Weaving Techniques (Nov. 11-30) (arranged by the Seattle Weavers' Guild)
Children's Corner—"Gods and Heroes"†
Masterpiece of the Month—Imperial Chinese K'o ssu panel, 16th-17th Century†

December 3, 1952-January 4, 1953

Religious Art†
Bortman Collection of Early American Silver
Early Art of China†
Engravings by William Hogarth†
Children's Corner—"Toys From Many Lands" (thru Feb. 1)†
Masterpiece of the Month—"Head of a Boy" (bronze) by Virginia Clafin Pratt†

A.F.A.—American Federation of Arts

M.M.A.—Museum of Modern Art

W.A.A.M.D.—Western Association of Art Museum Directors

*Lent by the Artist

†Museum Collection

CLASSES OF MEMBERSHIP

BENEFACTORS are those who have paid in dues or contributions a total of at least Fifty Thousand Dollars.

ASSOCIATE BENEFACTORS are those who have paid in dues or contributions a total of at least Twenty-five Thousand Dollars.

PATRONS are those who have paid in dues or contributions a total of at least Five Thousand Dollars.

ENDOWMENT MEMBERS are those who have contributed to the endowment fund of the Museum at least One Thousand Dollars.

LIFE MEMBERS are those who have paid in dues or contributions a total of Five Hundred Dollars.

HONORARY MEMBERS are those whose services, position or gifts have merited election by the Board of Trustees.

FOR THE SUPPORT OF ITS VARIED ACTIVITIES, THE MUSEUM DEPENDS CHIEFLY ON THE FAITHFUL ANNUAL MEMBERS.

SUSTAINING MEMBERS are those who pay annual dues of One Hundred Dollars.

SUPPORTING MEMBERS are those who pay annual dues of Fifty Dollars.

CONTRIBUTING MEMBERS are those who pay annual dues of Twenty-five Dollars.

ACTIVE MEMBERS are those who pay annual dues of Ten Dollars.

ASSOCIATE MEMBERS are those who pay annual dues of Five Dollars. New members limited to artists, students of art and teachers in any public or private school, or other persons, approved by the Board of Trustees.



Now that bequests to the Museum are exempt from inheritance tax, the Trustees earnestly solicit all those wishing to assist in building up the limited resources of the Museum to bequeath to it money or works of art worthy of the high standard for which it strives.

SUGGESTED FORM OF BEQUEST

I give and bequeath \$.....to the Seattle Art Museum.

MEMBERS OF THE SEATTLE ART MUSEUM

BENEFACTORS

BACKUS*, LeROY M. FULLER, MRS. EUGENE
 FREDERICK, MRS. DONALD E. FULLER, RICHARD E.
 STIMSON, MRS. THOMAS D.

ASSOCIATE BENEFACTORS

BACKUS*, M. F. BLACK*, CLARENCE A.

PATRONS

ATWOOD, MRS. J. C., JR. McEACHERN*, J. A.
 DOWNEY*, ARCHIBALD STEWART MERRILL, R. D.
 DOWNEY*, MRS. ARCHIBALD MORRISON*, MRS. ROBERT D.
 STEWART PARSONS, MRS. REGINALD H.
 GOULD*, CARL F. WRIGHT, RAYMOND G.
 KEVORKIAN, H. WYCKOFF, MR. AND
 KRESS, SAMUEL H. MRS. WALTER L.

ENDOWMENT MEMBERS

ANDERSON*, MRS. A. H. MERRILL, R. D.
 EVERETT, MRS. FRED PARSONS, REGINALD H.
 FREDERICK*, DONALD E. PARSONS, MRS. REGINALD H.
 HENRY*, H. C. SAMUELS, MRS. S. MAIMON
 McEWAN, MRS. A. F. STIMSON*, MRS. C. D.
 STIMSON, MRS. THOMAS D.

HONORARY MEMBERS

FIELD, HEMAN McDONALD, MRS. AGNES
 HEERAMANECK, MR. AND MIDDLETON, MRS. WALTER D.
 MRS. NASLI M. MOORE, ROLAND

LIFE MEMBERS

AGEN, MRS. JOHN B. BLACK, MRS. J. C.
 ATWOOD, MRS. J. C., JR. BLACK, MRS. LEO S.
 BAILLARGEON, CEBERT BRINK, MR. AND MRS. HERBERT
 BAILLARGEON, MRS. CEBERT BULLITT, MRS. A. SCOTT
 BEST, PETER CREIGHTON CAMPBELL, ROY E.

*DECEASED

CARLSON, MRS. LAWRENCE OSTRANDER, MRS. HARRY F.
 DUFFY, MRS. GILBERT L. PERTHOU, MR. AND
 ECKSTEIN, MISS JOANNA MRS. ALFRED VINCENT
 ESCOBOSA, MR. AND MRS. HECTOR SHELDON, MRS. ALAN B.
 FOSTER, MR. AND STRAND, MRS. CARL O., JR.
 MRS. ALBERT O. STRONG, MR. AND
 FREDERICK, MRS. DONALD E. MRS. HENRY C.
 JORDAN, MRS. C. T. THERRIEN, MR. AND MRS. Z. W.
 KREIELSHEIMER, LEO T. WYCKOFF, MR. AND
 LANG, RICHARD E. MRS. WALTER L.

ARTIST LIFE MEMBERS

EAKINS, MAX NORLING, ERNEST
 NOMURA, KENJIRO WICKS, REN
 ZIEGLER, EUSTACE P.

SUSTAINING MEMBERS

ATWOOD, MRS. J. C., JR. DONAHOE, MR. AND
 BAILLARGEON, CEBERT MRS. WALTER A.
 BAILLARGEON, MRS. CEBERT EDERER, ARTHUR F.
 BEALL, MR. AND MRS. FRAME, MRS. HOWARD A.
 WELLWOOD C. FREDERICK, MRS. DONALD E.
 BEST, IVAN LOVICH GARRETT, EDWARD I.
 BLOEDEL, MRS. PRENTICE HAUBERG, MR. AND
 BRODERICK, HENRY MRS. JOHN H., JR.
 BULLITT, MRS. A. SCOTT KREIELSHEIMER, LEO T.
 CLARK, MR. AND LABOW, MRS. LOUIS
 MRS. CHARLES M. MILLER, MR. AND
 MRS. PENDLETON
 CLISE, MR. AND MILLER, WINLOCK W.
 MRS. CHARLES F. PETERSON, MISS EVA MARION
 DAVIS, MR. AND MRS. NORMAN PIGOTT, MRS. PAUL
 DAY, MR. AND MRS. LEW V. WRIGHT, MRS. HOWARD H.
 WRIGHT, RAYMOND G.

SUPPORTING MEMBERS

BAYLEY, MRS. FRANK S., JR. FORCE, MR. AND MRS. HORTON C.
 BECK, DAVE GREER, MRS. ROBERT P.
 BOEING, MRS. WILLIAM E. HARLEY, MR. AND
 MRS. CLINTON S.
 BRADY, MR. AND MRS. HUGH P. HAUSMAN, MR. AND
 BULLITT, STIMSON MRS. JOHN P.

INGHAM, MR. AND
MRS. GORDON W.
KERRY, MISS OLIVE
KING, DR. AND MRS. HAROLD M.
KROGH, MR. AND MRS. EGIL
LAWRIE, MR. AND
MRS. WALTER H.
MCEACHERN, MISS GERTRUDE
MORRISON, MR. AND MRS. C. G.
PIGOTT, PAUL

YOUNG, MR. AND MRS. A. M.

CONTRIBUTING MEMBERS

ALLEN, MR. AND
MRS. EDWARD W.
ALLISON, REX
ARMSTRONG, MR. AND
MRS. FRANCIS J.
ATWOOD, JOHN C., JR.
BAILEY, MR. AND
MRS. PHILIP W.
BAILLARGEON, MRS. JOHN A.
BAILLARGEON, MISS PATRICIA
BALLINGER, MRS. J. H.
BLACK, MRS. FRANK DEWITT
BLACK, MRS. HAROLD C.
BLAKE, MRS. THOMAS W.
BLANCHARD, MISS MARY
BRENNEN, MRS. JAMES J.
BRITT, MISS AGNES W.
BROWN, MRS. ED M.
BROWN, MR. AND MRS. OSWALD
BURNETT, MRS. C. P., JR.
BUSCHMANN, AUGUST
CALHOUN, MISS ANNE H.
CALVERT, MRS. WILLIAM, JR.
CAMPBELL, MRS. EDWARD HALE
CAMPBELL, MR. AND MRS.
EDWARD STRONG
CARLANDER, MRS. C. H.
CARLSON, MR. AND MRS.
MAXWELL

PRICE, MR. AND MRS. ANDREW
ROBERTS, MR. AND MRS. FRED M.
SKINNER, MRS. DAVID E., II
SMITH, MRS. EDWARD LINCOLN
SMITH, MR. AND
MRS. PAUL ROLAND
STIMSON, MRS. CHARLES
WILLARD
WOOLDRIDGE, MR. AND
MRS. GILMORE G.

CHISM, MRS. M. M.
CLARKE, MRS. CASPAR W.
CLISE, J. W.
CLISE, MRS. J. W.
COLE, MRS. VERN
COLMAN, MR. AND MRS.
KENNETH B.
CORBET, DARRAH
CORREA, MRS. ROY J.
CZAJKOWSKI, DR. J. RICHARD
DALE, MRS. ETHYL L.
DALTON, MRS. RALPH L.
DEDERER, MR. AND MRS.
MICHAEL
DETLIE, MR. AND MRS.
JOHN STEWART
DONAHOE, MISS KATHLEEN
DONWORTH, JUDGE AND MRS.
CHARLES T.
DUNN, MR. AND MRS.
BRYANT R.
DUPAR, MRS. FRANK A., SR.
DYER, MRS. RALPH L.
EDRIS, WILLIAM
ELVIDGE, MR. AND MRS.
FORD Q.
FINNELL, MRS. ALICE STARK
FISHER, MRS. BONNIE
FISHER, MR. AND MRS.
KENNETH R.

FISHER, MRS. WILL P.
FRIEDLANDER, MRS. PAUL S.
GANDY, MR. AND MRS. JOSEPH E.
GELLERT, N. HENRY
GERBER, MR. AND MRS. SIDNEY
GILBERT, MRS. HARRY W.
GOSS, DR. AND MRS. CLARK C.
GRAHAM, MR. AND MRS.
JOHN, JR.
GRIFFITH, MR. AND MRS.
WILLIAM, JR.
GRIFFITHS, MRS. STANLEY A.
HAGYARD, MRS. CHARLTON E.
HEFFERNAN, MRS. CYRUS CLAPP
HENRY, MRS. LANGDON C., SR.
HERRETT, MRS. LLOYD
HEUSSY, MRS. WILLIAM C.
HILTNER, MRS. WALTER G.
HOLMES, MRS. SAMUEL J.
HUDSON, MR. AND MRS. CYRUS
HYDE, MRS. BEULAH L.
INNIS, MR. AND MRS. CLARENCE
R.
ISAACSON, MR. AND MRS. HENRY
JOHNSON, MR. AND MRS.
OFELL H.
JOHNSON, MRS. PHILLIP G.
JOHNSONE, MRS. C. R.
JUDSON, MR. AND MRS. HENRY
H.
KALLAND, DR. AND MRS.
MANFRED I.
KERRY, MR. AND MRS. A. S.
KRAUSS, MRS. ARTHUR J.
LANDY, MRS. EILEEN A.
LANSER, MR. AND MRS. MARTIN
M.
LAPIERRE, MR. AND MRS.
ALBERT L.
LAWRENCE, MRS. CHARLES
A., JR.
LEDBETTER, G. E.
LEVY, MR. AND MRS. SOL G.
LISTON, MR. AND MRS. J. GLEN
LITTLER, MR. AND MRS. A. A.

LOVELESS, ARTHUR L.
LYLE, MRS. STANLEY D.
MAGEE, MR. THORNTON A.
MALONE, MR. AND MRS. COE V.
MARSHALL, MR. AND MRS. FRED
MARTIN, DR. AND MRS. CHARLES
E.
MARYATT, MRS. C. W.
MCCAFFREY, FRANK
MCEWAN, MRS. A. F.
MCGRATH, MRS. R. L.
MCLAUGHLIN, FRANK
MEADOWCROFT, DR. AND MRS.
A. H.
MEISNEST, MRS. DARWIN
MESDAG, MRS. TOM
METCALFE, PROF. AND MRS.
JAMES VERNON
MILLER, MRS. RUSSELL
MILLIGAN, DR. AND MRS. JOHN
O.
MOSEY, MR. AND MRS. RICHARD
P.
MURRAY, MRS. RAY, II
MUSSON, R. P.
MYERS, MRS. HARRY M.
NARAMORE, FLOYD A.
NELSON, MR. AND MRS. ROBERT
B.
PADELFOED, MRS. FREDERICK M.
PADELFOED, MR. AND MRS.
PHILIP
PATTERSON, MRS. TOM S.
PATTY, MR. AND MRS. ERNEST N.
PAUL, JUDGE AND MRS. CHARLES
H.
PIPES, MR. AND MRS. FREDERICK
PITT, MISS ELIZABETH
POTTER, MRS. EDWIN A.
PRATT, MR. AND MRS. HENRY P.
QUINAN, MR. AND MRS. GEORGE
RABEL, MR. AND MRS. VICTOR
RADFORD, COLIN O.
RAWSON, DR. AND MRS.
ERROLL W.

REITZE, MR. AND MRS. C. N.
 ROBERTS, DEAN MILNOR
 ROBERTS, MISS MILNORA
 DE BELEN
 RUPP, MR. AND MRS. O. B.
 SAMUELS, DR. AND MRS. S.
 MAIMON
 SANFORD, MRS. ROLLIN
 SCHEYER, DR. AND MRS.
 FREDERICK L.
 SCHMIDT, MR. AND MRS. PETER
 G.
 SCHMITZ, MR. AND MRS.
 DIETRICH
 SCHULTZ, MR. AND MRS. GUSTAV
 SCHWARZ, MRS. HARVEY
 SCOTT, MRS. GORDON N.
 SCOTT, MR. AND MRS. JOHN L.
 SEBASTIAN, MRS. C. J.
 SHEMANSKI, MR. AND MRS.
 ALFRED
 SICK, MR. AND MRS. EMIL
 STIMSON, MR. AND MRS. DAVID
 STIMSON, DOUGLAS

STODDARD, MR. AND MRS.
 GEORGE W.
 STREET, MR. AND MRS. WILLIAM
 S.
 SUMMERS, LANE
 TAYLOR, MISS DOROTHEA B.
 TAYLOR, PROF. EDW. AYERS
 TENNESON, MRS. JOHN T.
 THIRY, MR. AND MRS. PAUL
 TODD, MR. AND MRS. C. H.
 TODD, MRS. ELMER E.
 TORLAND, MRS. TORLIEF
 TRIMBLE, MRS. KERRY
 ULRICH, MRS. RUSSELL
 VICARY, E. H.
 WAGNER, MRS. CORYDON
 WARHANIK, DR. AND MRS. C. A.
 WATSON, MRS. ROE DUKE, III
 WATTLEWORTH, MR. AND MRS.
 BRIAN
 WHITE, MRS. FREDERIC HALL
 WORTH, MRS. HARRY I.
 WYMAN, MRS. DAVID E.
 YUILE, MR. AND MRS. H. W.

FIRM MEMBERSHIPS

BUDGET MEMBERS

NORTHWESTERN GLASS COMPANY

SUSTAINING MEMBERS

BOEING AIRPLANE COMPANY	MEALS & COMPANY
HERBERT BRINK AND ASSOCIATES	THE McDUGALL & SOUTHWICK COMPANY
DAVIES CHEVROLET, INC.	METROPOLITAN BUILDING COMPANY
GENERAL INSURANCE COMPANY OF AMERICA	RHODES OF SEATTLE
ISAACSON IRON WORKS	VAN WATERS & ROGERS, INC.
LYNCH MANUFACTURING COMPANY	WASHINGTON TITLE INSURANCE COMPANY

SUPPORTING MEMBERS

BEKINS MOVING & STORAGE COMPANY	I. MAGNIN AND COMPANY
CONTINENTAL, INC.	THE MILLER PAINT COMPANY
FOSTER & MARSHALL	NETTLETON TIMBER COMPANY
HARDY'S	RYAN CADILLAC COMPANY
	SIMPSON LOGGING COMPANY

CONTRIBUTING MEMBERS

ACME PRESS OF SEATTLE	LOWMAN & HANFORD COMPANY
L. E. BELCOURT COMPANY	VICTOR NELSON FURS
BUTTERWORTH & SONS	NEW ENGLAND FISH COMPANY
CRAWFORD'S SEA GRILL	NOISE CONTROL OF SEATTLE, INC.
WM. L. DAVIS SONS CO.	PACIFIC MARINE SUPPLY COMPANY
ELLIOTT BAY LUMBER COMPANY	PORTERFIELD-MARKS
FOX'S GEM SHOP	VICTOR ROSELLINI'S RESTAURANT
LOUISA C. FRYE, INC.	SMITH-GANDY, INC.
GRANDMA COOKIE BAKING COMPANY	STAR MACHINERY
G. O. GUY CO.	SUNSET ELECTRIC COMPANY
JOSEPH HART, APOTHECARY	MORITZ THOMSEN INVESTMENT COMPANY
HI-DUTY ALLOYS, INC.	WEST & WHEELER
INTERNATIONAL BUSINESS MACHINES CORP.	WESTERN PRINTING COMPANY, INC.
H. S. KAWABE & COMPANY	M. A. WYMAN LUMBER COMPANY
LIQUEFIED GAS CORP.	

ACTIVE MEMBERS

CAROLYN'S CAKES	SMITH CANNERY MACHINES COMPANY
J. CRISSEY	SULLIVAN FLORISTS
GEORGE L. DAVIS COMPANY	SWISS PASTRY & CANDY SHOP
HAINES OYSTER COMPANY	TESACK-PETERS COMPANY
JUNIOR BOOT SHOP	WASHINGTON ATHLETIC CLUB GARAGE
MEB'S BEAUTY-WARES	WASHINGTON FISH & OYSTER COMPANY
I. MILLER	
PESSEMIER'S FIFTH AVENUE	

FIRM DONATIONS

ALASKA STEAMSHIP COMPANY (\$50)	IMPERIAL BEVERAGES (\$500)
THE BON MARCHE (\$350)	LEASE & LEIGLAND (\$50)
CRESCENT MANUFACTURING COMPANY (\$100)	LOWMAN & HANFORD Co. (\$50)
ERNST HARDWARE Co. (\$50)	MEDINA FOUNDATION (\$500)
FISHER FLOURING MILLS Co. (\$100)	SEABOARD LUMBER COMPANY (\$100)
FREDERICK & NELSON (\$350)	STANDARD OIL COMPANY OF CALIFORNIA (\$100)
HORI'S ANTIQUE REPAIR SHOP (\$10)	UNIVERSITY CHEVROLET (\$25)
	YATES, RILEY & MACDONALD (\$50)

INDIVIDUAL AND GROUP DONATIONS

AMATEUR GARDENERS
 ANONYMOUS
 ARNOLD, MRS. W. C.
 ATWOOD, MRS. J. C., JR.
 BAILLARGEON, MRS. CEBERT
 BENNETT, ESTATE OF MARYPEARL
 BENSON, MISS EDNA
 BETA SIGMA PHI SEATTLE CITY
 COUNCIL
 BRINK, MRS. HERBERT
 BRITT, MISS AGNES
 BURNLEY SCHOOL OF ART &
 DESIGN
 CLARK, CHARLES M.
 CLISE, JAMES W.
 COE, DR. AND MRS. HERBERT E.
 COLE, DR. AND MRS. I. VINCENT
 DAVIS, NORMAN
 ECKSTEIN, MISS JOANNA
 EDERER, ARTHUR F.
 EGTVEDT, CLAIRMONT L.
 EVERETT, MRS. FRED
 FISHER, MRS. WILL P.
 FORBES, R. R.
 FREDERICK, MRS. DONALD E.
 FRINK, MR. AND MRS. SPAFFORD
 FULLER, MRS. EUGENE
 GIRL SCOUTS SEATTLE-KING
 COUNTY COUNCIL
 GREER, MRS. ROBERT P.
 HAUBERG, JOHN H., JR.
 HEDDERLY-SMITH, MRS. ARTHUR
 HEUSSY, MRS. WILLIAM C.
 HILL, MRS. RAYMOND P.
 HILLCREST CLUB OF WEST
 SEATTLE
 HODGES, MRS. JAMES F.
 JONSON, MISS ALMA
 JUDSON, HENRY H.
 JUNIOR LEAGUE OF SEATTLE, INC.
 LECOCQ, MRS. FRANK G.
 LOCHOW, MRS. WILLIAM
 MCCAFFREY, FRANK
 McDONALD, MISS PEARL
 MEN'S & WOMEN'S AMATEUR
 CHRYSANTHEMUM ASSOCIA-
 TIONS
 MITCHELL, MRS. WALTER E.
 MOLITOR, MRS. FRANK H.
 MORRISON, C. G.
 MUSIC & ART FOUNDATION
 NORTHWEST WATERCOLOR
 SOCIETY
 PALETTE & BRUSH CLUB
 PIPES, MR. AND MRS. FREDERICK
 PLUM, DR. AND MRS. FRANK A.
 PUGET SOUND GROUP OF
 NORTHWEST PAINTERS
 SEATTLE PARENT-TEACHER ASSO-
 CIATIONS, ART CHAIRMEN
 RABEL, MRS. O. R.
 RADFORD, COLIN
 RUSSELL, MISS PEARL
 SCHULTZ, MRS. GUSTAV
 SCRUBY, MRS. W. W.
 SEATTLE ART MUSEUM GUILD
 SEATTLE CO-ARTS
 STIMSON, MRS. THOMAS D.
 TRIMBLE, MRS. KERRY
 WARE, DR. E. RICHMOND
 WOMEN PAINTERS OF WASH-
 INGTON
 WRIGHT, RAYMOND G.
 ZELLER, MRS. GEORGE

ORGANIZATION MEMBERSHIPS

Adams P.-T. A.—*Associate*
 John B. Allen P.-T. A.—*Active*
 Aloha Club of Tacoma—*Active*
 Altrusa Club of Seattle—*Active*
 American Association of University Women—*Active*
 Antiquarian Society of Seattle—*Contributing*
 Bagley P.-T. A.—*Active*
 Ballard High P.-T. A.—*Associate*
 Beta Sigma Phi, Alpha Omicron Chapter—*Active*
 Beta Sigma Phi, Epsilon Chapter—*Active*
 Beta Sigma Phi, Xi Alpha Chapter—*Active*
 Catherine Blaine Junior High P.-T. A.—*Associate*
 Briarcliff P.-T. A.—*Active*
 Brighton P.-T. A.—*Active*
 Bryant P.-T. A.—*Active*
 Helen Bush School—*Associate*
 California Palace of the Legion of Honor—*Active*
 Cleveland Junior-Senior High School—*Associate*
 Cleveland P.-T. A.—*Active*
 Columbia P.-T. A.—*Active*
 Cornish School Foundation—*Active*
 Coterie—*Active*
 Durant Study Club—*Active*
 Nathan Eckstein Junior High P.-T. A.—*Active*
 Emerson Elementary P.-T. A.—*Associate*
 English-Speaking Union, Seattle Branch—*Contributing*
 Evergreen Camera Club—*Active*
 Fairview P.-T. A.—*Active*
 Fairview Unit, Music & Art—*Active*
 Fine Arts Study Club—*Active*
 Franklin High P.-T. A.—*Active*
 Garfield High P.-T. A.—*Associate*
 Girl Scouts, Seattle-King County Council—*Active*
 Green Lake P.-T. A.—*Associate*
 Greenwood P.-T. A.—*Active*
 Alexander Hamilton P.-T. A.—*Active*
 Hawthorne P.-T. A.—*Active*
 John Hay P.-T. A.—*Active*
 John Hay Pre-school Association—*Active*
 Holy Names Academy—*Active*
 Jefferson P.-T. A. and Preschool Association—*Active*
 Junior League of Seattle, Inc.—*Contributing*
 King County Council of Parents and Teachers—*Active*
 Ladies Musical Club—*Active*
 Lafayette P.-T. A.—*Active*
 Lambda Rho Alumnae—*Active*
 Laurelhurst P.-T. A.—*Active*
 Leschi P.-T. A.—*Associate*
 Lincoln High P.-T. A.—*(Two) Associate*
 James Madison Junior High P.-T. A.—*Active*
 Madrona P.-T. A.—*Active*
 Magnolia Elementary P.-T. A.—*Active*
 Maple P.-T. A.—*Active*

John Marshall Junior High P.-T. A.—*Active*
 McDonald P.-T. A.—*Active*
 Edmond Meany P.-T. A.—*Active*
 James Monroe Junior High P.-T. A.—*Associate*
 Montlake P.-T. A.—*Active*
 Music & Art Foundation—*Sustaining*
 National Council of Jewish Women, Seattle Section—*Active*
 National League of American Pen Women, Seattle Branch—*Active*
 North Queen Anne P.-T. A.—*Active*
 Olympic View P.-T. A.—*Associate*
 Palette & Brush Club—*Active*
 Parkside School—*Associate*
 P. E. O. Chapter CJ—*Active*
 P. E. O. Chapter G—*Active*
 Porcelain Study Group—*Active*
 Puget Sound Group of Northwest Painters—*Contributing*
 Queen Anne High P.-T. A.—*Active*
 Ravenna P.-T. A.—*Active*
 Roosevelt High P.-T. A.—*Associate*
 St. Nicholas School—*Active*
 School of Drama, University of Washington—*Contributing*
 Science, Literature & Art Club of Port Townsend—*Active*
 Seattle Art Teachers' Association—*Active*
 Seattle Ceramic Society—*Contributing*
 Seattle Co-Arts—*Active*
 Seattle Council of Parent-Teacher Associations—*Associate*
 Seattle Council of Parent-Teacher Associations, Preschool Section—*Associate*
 Seattle Council of Parent-Teacher Associations,
 Elementary Section—*Associate*
 Seattle Council of Parent-Teacher Associations,
 Junior High Section—*Associate*
 Seattle Council of Parent-Teacher Associations, High School Section—*Active*
 Seattle Federation of Women's Clubs—*Active*
 Seattle Grade Teachers' Club—*Associate*
 Seattle Photographic Society—*Active*
 Seattle University—*Contributing*
 Seattle Weavers' Guild—*Sustaining*
 Seward P.-T. A.—*Active*
 Soroptimist Club of Seattle—*Contributing*
 Tacoma Art League—*Contributing*
 Tyro Classis of Poulsbo—*Associate*
 University Heights P.-T. A.—*Active*
 Van Asselt P.-T. A.—*Active*
 View Ridge P.-T. A.—*Active*
 Washington State Chapter, American Institute of Architects—*Supporting*
 Washington State Federation of Garden Clubs—*Active*
 West Queen Anne P.-T. A.—*Active*
 West Seattle Art Club—*Active*
 West Seattle Federated Women's Clubs—*Active*
 West Side Women's Improvement Club—*Active*
 West Woodland P.-T. A.—(Two) *Associate*
 West Woodland Preschool Association—*Active*
 Whitworth P.-T. A.—*Active*
 Woman's Century Club—*Associate*
 Women's City Club—*Active*
 Women's Educational Club—*Active*
 Yakima Valley Art Association—*Active*

ACTIVE MEMBERS

Abbott, Mrs. W. H.
 Adams, Mrs. Fred E.
 Adams, Mrs. George L.
 Adams, Mr. and Mrs.
 Jay B.
 Addington, Mrs. E. A.
 Agatz, Miss Bernice
 Albert, Mrs. Sarah Truax
 Alexander, Mrs.
 Frederick W.
 Alexander, Mrs. Matthew
 S.
 Alexander, Mrs. R. A.
 Alhadeff, Mrs. M. J.
 Allen, Dr. and Mrs.
 Chester M.
 Allen, Mrs. Marshall
 Allen, Lt. and Mrs.
 Thomas E.
 Allen, William M.
 Allison, Mr. and Mrs.
 Charles E.
 Alps, Mr. and Mrs.
 Glen E.
 Altnow, Mrs. George G.
 Ambler, John
 Ames, Mrs. Edgar
 Anderson, Mrs. Crawford
 Anderson, Mrs.
 Donald K.
 Anderson, Miss Helen D.
 Anderson, Mr. and Mrs.
 Robert G.
 Anderson, Mrs. Roger
 Anhalt, Mrs. Fred
 Argersinger, Mrs. E. V.
 Armstrong, Mrs. Arthur
 O.
 Arnold, Mrs. Edmund C.
 Arnold, Mrs. W. C.
 Arrington, Mrs. John
 Ashley, Mr. and Mrs.
 Paul P.
 Atwood, Miss Leila M.
 Ayrault, Mrs. A. D.
 Babcock, Mrs. Burt
 Backus, Mr. and Mrs.
 LeRoy M.
 Backus, Mr. and Mrs.
 Manson F., II
 Baggott, Mrs. R. A.
 Bailey, Dr. and Mrs.
 Gayton S.
 Bailey, Mrs. W. C.
 Bain, Mr. and Mrs.
 William J.
 Baker, Mrs. George B.
 Baker, Mrs. Joel W.
 Balch, Mrs. Albert
 Bale, Mrs. T. W.
 Ball, Mrs. Douglas
 Ball, Mrs. Ruth C.
 Ballard, Mr. and Mrs.
 Carl M.
 Ballard, Mrs. Page H.
 Ballou, Mrs. William H.
 Bannan, Thomas J.
 Bannan, Mrs. Thomas J.
 Bannick, Dr. and Mrs.
 Edwin G.
 Barksdale, Mr. and Mrs.
 Julian D.
 Barnes, Mrs. Samuel L.
 Barrett, Miss Betty Hope
 Bassan, Dr. and Mrs.
 Morton E.
 Baxter, Charles M.
 Baxter, Miss Janette H.
 Baxter, Mrs. John
 McGraw
 Bayless, Mrs. Owen G.
 Bayley, Mrs. Emery P.
 Bayley, Mr. and Mrs.
 Frank S.
 Bean, Mrs. Warren H.
 Beardsley, Mrs. J. E.
 Bechtol, Mrs. Charles
 Becket, Mrs. Evro M.
 Beecher, Mrs. H. W.
 Beecher, Mrs. H. W., Jr.
 Beeler, Mrs. Adam
 Bell, Mrs. F. Heward
 Bell, Mrs. Will Otto
 Bellamy, Tennys F.
 Bemis, Mrs. Charles A.
 Benson, Miss Edna G.
 Benson, Mrs. Henry V.
 Bently, Mr. and Mrs. Don
 Berge, Dr. and Mrs.
 James Hallard
 Bergren, Mrs. Harold J.
 Berry, Mrs. Albert
 Berry, Mrs. A. Marcellus
 Bertholf, Mr. and Mrs.
 J. R.
 Bilyeu, Mrs. H. D.
 Bindon, Mrs. L. W.
 Black, Mr. and Mrs.
 Charles E.
 Black, Mr. and Mrs.
 Charles H.
 Black, Mrs. Edward
 J., Jr.
 Black, Mrs. F. Gilbert
 Black, Mr. and Mrs.
 Lyman H.
 Blackstock, Mrs. Herbert
 Blanchard, Mrs. Norman
 J.
 Blanchett, Mrs. Frederic
 J.
 Bledsoe, Mrs. Clarence
 W.
 Blethen, Mrs. C. B.
 Block, Mr. and Mrs.
 Robert J.
 Bloedel, J. H.
 Blogg, Miss Violet A.
 Bloomey, Mrs. Harold
 Bocker, Mr. and Mrs.
 Leon M.
 Boeing, Mrs. William E.,
 Jr.
 Bogardus, Mr. and Mrs.
 Almon E.
 Bogardus, Mrs. Charles
 E.
 Bogardus, Mrs. Richard
 S.
 Bogle, Mrs. Lawrence
 Bolster, Mrs. Pauline
 Bonnar, Mr. and Mrs.
 H. A. M.
 Bosserman, Mr. and Mrs.
 Lyman W.
 Bowden, Mrs. W. B.
 Bracken, H. Dan, Jr.
 Bradley, Mr. and Mrs. G.
 Donald
 Bremer, Mrs. William
 Bressler, Mrs. Calder
 Blaine
 Brice, Mrs. George F.
 Bridge, Mrs. James L.
 Bridgers, Mrs. M.
 Buschmann
 Brinkley, Mrs. Robert
 Campbell
 Brislawn, Mrs. Joseph W.
 Brockman, Mrs. C. F.
 Bronson, Mrs. Philip
 Brookbank, Dr. and Mrs.
 E. B.
 Brooke, Miss Mary

Brough, Mrs. W. E.
 Brown, Mrs. J. Richard
 Brownell, Mrs. Francis H., Jr.
 Bruce, Mrs. Ivan M.
 Bruenner, Mrs. B. F.
 Bryant, Mrs. Chal Page, Sr.
 Bryant, Mr. and Mrs. C. W.
 Bryer, Mrs. William B.
 Buckley, Mrs. Harry A.
 Burke, Mrs. Roland H.
 Burkheimer, Mrs. John E.
 Burnaby, Mrs. Fred
 Burnett, Mrs. B. J.
 Burnley, Mr. and Mrs. J. Edwin
 Burns, Mr. and Mrs. James A.
 Burtch, Mrs. Bryan W.
 Burton, Mr. and Mrs. Bruce M.
 Burwell, Mrs. Anson S.
 Buschke, Mrs. F.
 Buschmann, Mrs. August
 Buschmann, Mrs. Bronson
 Buschmann, Miss Katherine
 Buschmann, Mrs. Richard
 Buschmann, Dr. and Mrs. T. W.
 Bushnell, Mrs. Leonard T.
 Butler, Mrs. F. M.
 Butterbaugh, Dr. and Mrs. Grant I.
 Bye, Mrs. Louis K.

Calhoun, Mrs. Frederick J.
 Callison, Mrs. Cecil
 Callison, Mr. and Mrs. Henry
 Calvert, Mrs. Frank
 Calvert, Mrs. Lawrence
 Calvert, Mrs. William, Sr.
 Camfferman, Mr. and Mrs. Peter
 Campbell, Mrs. John R.
 Campbell, Mrs. Luella W.
 Campbell, Mrs. Roy
 Campbell, Mrs. T. H.
 Campbell, Mrs. W. H.
 Campbell, Mr. and Mrs. Willis L.

Carey, Mr. and Mrs. Hugh
 Carey, Mr. and Mrs. John Spaulding
 Carey, Mrs. James W.
 Carlson, Miss Beth
 Carmin, Mrs. Bernard A.
 Carpenter, Mr. and Mrs. F. G.
 Carter, Dudley C.
 Case, Austin F.
 Case, Mrs. Elwell C.
 Case, Mrs. Frank Elwell
 Case, Mr. and Mrs. John M.
 Casey, Miss Marguerite M.
 Cassidy, Miss Carolyn
 Castleton, Mrs. W. A.
 Cavanaugh, Mrs. Davis
 Chadwick, Mrs. Stephen F.
 Chamberlain, Mrs. Louise N.
 Chamberlin, Mrs. Daniel U.
 Chapple, Dr. Stanley
 Cheatham, Mrs. B. F.
 Cheney, Mrs. Wolcott
 Child, Miss Vera
 Christoffersen, Mrs. O. H.
 Clark, Mrs. Archibald G.
 Clark, Mrs. C. Spencer
 Clark, Dr. and Mrs. Ernest Dunbar
 Clark, Mrs. Irving M.
 Clark, Irving M., Jr.
 Clark, Mrs. Irving M., Jr.
 Clark, Mrs. Nelson
 Clarke, Charles Henry, II
 Clarke, Mrs. Fred G.
 Clarke, Mrs. Neita
 Clasen, Mr. and Mrs. Hans O.
 Clise, Mrs. E. P.
 Clyde, Paul D.
 Coe, Dr. and Mrs. Herbert E.
 Cohen, Mrs. Arthur G.
 Cole, Dr. and Mrs. I. Vincent
 Cole, Mrs. James S.
 Coleman, Mrs. Clarence I.

Collins, Bertrand
 Collins, Mrs. Frederick B.
 Collins, Mrs. Josiah
 Collins, Josiah, Jr.
 Collins, Mr. and Mrs. Wetherill
 Colman, Mrs. Paul E.
 Colwell, Mr. and Mrs. J. I.
 Connell, Mrs. J. J.
 Connor, Mrs. Gene D.
 Conrad, Mr. and Mrs. Halden L., Jr.
 Conway, Mr. and Mrs. John Ashby
 Cook, Mrs. A. James
 Cook, Mr. and Mrs. Edward A.
 Cooley, Mrs. George R.
 Copeland, Mr. and Mrs. Paul W.
 Cowan, Mrs. C. S.
 Crawford, Mrs. William W.
 Creighton, Mrs. S. Allison
 Crooks, Mrs. E. R.
 Crosby, Mrs. Harry W.
 Crouse, Miss Bertha Lee
 Cruse, Mrs. C. B.
 Cunningham, Mrs. Edward
 Cushman, Edward L.

Dakin, Mrs. Olcott
 Danielson, G. H.
 Danz, Mrs. Frederic
 Davidson, Dr. and Mrs. Samuel H.
 Davies, Mr. and Mrs. Thomas A.
 Davis, Mrs. Clifford W.
 Davis, Frederick E.
 Davis, Mrs. S. W.
 Davis, Mr. and Mrs. William M.
 Dawson, Mrs. Marian M.
 Day, Dr. and Mrs. Charles G.
 Dearborn, Mrs. Frank
 DeFreece, Dr. and Mrs. A. B.
 Dehn, Mrs. Karl
 Dennen, Dr. and Mrs. Charles
 Denny, Miss Grace G.

Denny, Mr. and Mrs. Victor
 Densmore, Prof. H. B.
 Dent, Hawthorne K.
 de Turenne, Mr. and Mrs. Leon A.
 Dexter, Mrs. Oakley W.
 Dickey, Mrs. R. N.
 Dickinson, Mrs. Phillips
 Djos, Mr. and Mrs. Matts
 Dobie, Miss Edith
 Doces, G. John
 Donahoe, Mrs. Charles
 Donnan, Mrs. Dallas
 Donogh, Mrs. Stanly
 Doran, Mrs. Earl Dee
 Dore, Mrs. John F.
 Dorman, Dr. and Mrs. Purman
 Douglas, Mrs. J. F.
 Douglas, Mrs. Thomas E.
 Downie, Mrs. Leonard
 Dowzard, Mrs. Edward
 DuBois, Mrs. Richard B.
 Dudley, Mr. and Mrs. Robert Earle
 Dundas, Mrs. Harold F.
 Dunn, Edward B.
 Durand, Dr. and Mrs. Jay I.
 Durkee, Mrs. Grant E.
 Durkin, Mrs. Charles
 Dusanne, Mrs. Zoe
 Dye, Mrs. William H. H.

Easter, Mrs. Charles W.
 Eastman, Mrs. Leslie W.
 Easton, Mr. and Mrs. Charles L., Sr.
 Eckart, Miss Hulda
 Eddy, James G.
 Edmunds, Mrs. Louis H.
 Edris, Mrs. Ned
 Edwards, Charles F.
 Edwards, Mrs. Elmer F.
 Edwards, Mrs. Robert L.
 Eggers, Mrs. Rolf K.
 Ehrlichman, Mrs. Ben B.
 Eisenhardt, Mr. and Mrs. Henry G.
 Elam, Mrs. R. William
 Elder, Mrs. William Edmund
 Eldridge, Mrs. Arthur S.
 Ellis, Mrs. Floyd
 Elmore, Miss Mary

Elshin, Jacob
 Elwell, Mrs. Irvin W.
 Elworthy, Dr. and Mrs. Frederick M.
 Emery, Mrs. Fred G.
 Engle, Mr. and Mrs. Allen B.
 Epstein, Mrs. Jesse
 Erskine, Mr. and Mrs. Robert Chase
 Evans, Miss Margaret
 Evans, Mrs. Philip M.

Fairbanks, Miss Esther
 Fairbanks, Miss Lulu M.
 Falconer, Mrs. James W.
 Fallor, Mrs. Preston
 Falter, Mrs. Helen B.
 Farrell, Mrs. James
 Fawcett, Miss Gertrude K.
 Feely, Mrs. W. L.
 Fenby, Mrs. Edwin J.
 Ferguson, Mrs. Archibald Hill
 Ferguson, Mrs. George A.
 Fey, Dr. and Mrs. Louis D.
 Field, Mrs. Henry C.
 Fincke, Mrs. John
 Finley, Mrs. John C.
 Fiset, Dr. and Mrs. Louis
 Fisher, Miss Deborah Lou
 Fiskin, Mrs. A. D.
 Fiskin, Mrs. Keith G.
 Fite, Mrs. F. B., Jr.
 Flohr, Mrs. E. Firmin
 Foote, Miss Hope L.
 Ford, Mrs. Sherwood D.
 Forde, Mrs. J. M.
 Forsman, Mrs. Hilding E.
 Fortin, Mrs. Lavern H.
 Foster, Mr. and Mrs. T. B.
 Fox, Mrs. Malcolm H.
 Franklin, Mrs. M. Burton
 Franzheim, Mr. and Mrs. Harry C.
 Frederick, Dr. and Mrs. Philip M.
 Freeman, Mrs. Miller
 French, Mrs. H. P.
 Fribrock, Mrs. E. J.
 Friele, Mrs. Haakon
 Friese, Mrs. Norman

Frink, Mr. and Mrs. Frank G., Jr.
 Frink, Mr. and Mrs. Spafford
 Fronk, Mr. and Mrs. W. J.
 Froula, Miss Sylvia
 Fryer, Mrs. Elwood
 Fudge, Mrs. Lawrence
 Fulmer, Mr. and Mrs. W. L.

Gallagher, Dr. Harold
 Gardner, Mrs. Frank P.
 Gardner, John S.
 Garrett, Mrs. Peter
 Garvin, Mrs. John P.
 Gates, Miss Alice
 Gates, Mr. and Mrs. Cassius E.
 Geibel, Mr. and Mrs. Fred W.
 Gellert, Mrs. O. F.
 Georgeson, Miss Dagmar
 Georgeson, Mrs. V. L.
 Gerber, Mrs. Leonard J.
 Gibson, Mrs. E. Harley
 Giese, Mrs. Paul J.
 Gilbert, Mrs. John N.
 Giles, Mrs. E. T.
 Gilkey, Mrs. Charles
 Gillman, Mrs. Joseph
 Glass, Mrs. Joseph C.
 Glass, Mrs. Joseph C., Jr.
 Goldblatt, Mr. and Mrs. Alfred L.
 Goodfellow, Mrs. J. R.
 Goss, Mr. and Mrs. Dale
 Gould, Mr. and Mrs. Carl F.
 Gould, John V.
 Gow, Miss Janet
 Gowen, Mr. and Mrs. L. E.
 Graff, Mrs. A. C.
 Graham, Mrs. C. Henry
 Graham, Mrs. Guy V.
 Graham, Mrs. M. Lester
 Graves, Mrs. Lloyd O.
 Green, Mrs. Allen P., Jr.
 Green, Mrs. Curtis M.
 Green, Mr. and Mrs. Joshua
 Green, Mrs. Joshua, Jr.
 Greene, Mrs. Taylor M.
 Greenstreet, Mrs. A. G.

Greenwood, Mrs. George H.
 Grieve, George B.
 Griffin, Mrs. Eldon
 Griffiths, Mr. and Mrs. James F.
 Grill, Mrs. William L.
 Grimshaw, Dean and Mrs. Austin
 Groves, Miss Elizabeth A.
 Gunnison, Mrs. Helena C.
 Gunther, Dr. Erna
 Gunther, Mrs. J. J.
 Guthrie, Mrs. E. R.
 Guthrie, Mrs. J. D.
 Gutmann, Addis
 Guykema, Mrs. Herman

Hackett, Miss Edna
 Haggard, Mrs. Milton
 Haglund, Ivar
 Hall, Mrs. G. Batcheller
 Hall, Mr. and Mrs. John A.
 Hallgren, Robert W.
 Hallowell, Mr. and Mrs. Harry C.
 Hamilton, Mrs. Frank S.
 Hamilton, Mrs. Lawrence
 Hamrick, John
 Handley, Miss Agnes G.
 Hanks, Dr. and Mrs. Thrift G.
 Hansen, Miss Elizabeth Ann
 Hansen, Mrs. Howard H.
 Hanson, Mrs. Howard A.
 Hargood, Mr. and Mrs. Harry W.
 Harlan, Mrs. J. D.
 Harley, Mr. and Mrs. C. Frederick
 Harley, Mrs. Hortense B.
 Harmer, Mrs. William H.
 Harnan, Mrs. William L.
 Harper, Mrs. Dickinson C.
 Harper, Mr. and Mrs. Paul C.
 Harper, Mrs. Richard E.
 Harris, Mr. and Mrs. Charles L.
 Harris, Mrs. G. O.
 Harris, Mrs. John J.
 Harris, Mrs. W. H.

Harrison, Mrs. Max
 Hartman, Mrs. Harry
 Hartzell, Mrs. Homer V.
 Hartzell, Mr. and Mrs. James H.
 Hasemeier, Mrs. Wilbur E.
 Hauptmann, Liborius
 Hausman, Mrs. W. A.
 Havill, Mr. and Mrs. Oliver B.
 Hawley, Mr. and Mrs. Ralph S.
 Hawley, Dr. S. J.
 Haymond, Mrs. Harold E.
 Hazen, Mrs. George W.
 Hazen, Mrs. Raymond C.
 Head, Mrs. Sydney R.
 Heathman, Mrs. H. L.
 Heilman, Mrs. Robert B.
 Heinzinger, Miss Ruth
 Heliker, Mrs. Florence D.
 Hellickson, Mrs. Raymond A.
 Helsell, Mrs. Frank P.
 Helwig, Mrs. J. C.
 Hemphill, Mrs. Wylie
 Henning, Mrs. I. R.
 Henry, Mrs. Chapin
 Henry, Langdon C.
 Henry, Mrs. Paul
 Hepler, Dr. and Mrs. A. B.
 Herald, Mrs. Ernest B.
 Herriges, Mrs. Phil
 Herron, Mr. and Mrs. Stephen
 Hickey, Yates
 Hickey, Mrs. Yates
 Hilen, Mrs. A. R., Sr.
 Hill, Mrs. Laurence C.
 Hill, Raymond L.
 Hill, Mrs. Raymond P.
 Hillier, Mrs. E. T.
 Hillman, Mrs. R. Kline
 Hills, Mrs. Chester W.
 Hinea, Mrs. Ray W.
 Hinton, Mr. and Mrs. E. R.
 Hiscock, Mrs. Frank
 Hisken, Mr. and Mrs. P. C.
 Hitchman, Mrs. H. S.
 Hitchman, Robert
 Hitt, H. C.

Hjert, Mrs. Harry
 Hoak, Mrs. Harold A.
 Hodges, Mrs. James F.
 Hoedemaker, Mrs. Edward D.
 Hoerr, Mrs. A. A.
 Hoffman, Mrs. Walter F.
 Hofius, Mrs. Morrison
 Hollis, Howard C.
 Holman, Mrs. Frank E.
 Holmes, J. Lister
 Holmes, Mrs. J. Lister
 Holmes, Mrs. W. Kirby
 Honore, Mrs. C. E.
 Hopkins, Mrs. George Parsons
 Hopkins, Mrs. George Raymond
 Horder, Mrs. Garrett
 Hosmer, Mrs. Richard H.
 Hovey, Mrs. W. T.
 Howe, Mrs. C. D.
 Howe, Mrs. George B.
 Howe, Mrs. James B., Jr.
 Hoyt, Mrs. Richard Duncan
 Huber, Mr. and Mrs. Louis R.
 Hughes, Mrs. David V.
 Hughes, Prof. Glenn
 Hulse, Dr. and Mrs. Frederick S.
 Hunt, Mrs. Herschel C.
 Huntington, Mrs. Gloria F.
 Huntoon, Mrs. Richard Waldron
 Husenetter, Miss Gertrude L.
 Huston, Mrs. Harold H.
 Huston, Mrs. Kathleen A.
 Huston, Rt. Rev and Mrs. S. Arthur
 Hutchings, Mrs. Ernest M.

Igoe, Miss Helen
 Ingalls, Mrs. Ernest W.
 Ingham, Mrs. Fred
 Ingham, Mrs. W. F.
 Ingram, Mrs. Neal
 Isaacs, Prof. and Mrs. Walter F.

Jackson, Miss Dorothea
 Jackson, Mrs. Russell

Jacobsen, Mr. and Mrs. John T.
 Jacobsen, Mrs. Martin
 Jacobson, Mrs. Berthe Poncy
 Jamison, Mrs. G. H.
 Jarvis, Mr. and Mrs. David H.
 Jarvis, Emil Peter
 Jarvis, Mrs. Emil Peter
 Jarvis, Mrs. Ethel M.
 Jarvis, Mrs. Fred J.
 Jensen, Dr. and Mrs. Clyde R.
 Jensen, Mrs. George A.
 Jensen, Mr. and Mrs. Lloyd E.
 Jensen, Mrs. Mark A.
 Jensen, Mrs. Pearl E.
 Johanson, Mrs. Daniel
 Johanson, Mrs. Perry B.
 Johnson, Mrs. A. Dean
 Johnson, Mrs. A. Winsor
 Johnson, Mrs. D. H.
 Johnson, Mrs. Frank Warren
 Johnson, Mrs. Fredrik L.
 Johnson, Mrs. H. K. L.
 Johnson, Mrs. H. LaBarre
 Johnson, Mrs. Harold Raymond
 Johnson, Mr. and Mrs. Lloyd W.
 Johnson, Mr. and Mrs. Norton
 Johnson, Mrs. Walter
 Johnson, Mrs. Walter K.
 Johnston, Mrs. G. Herbert
 Jones, Mrs. H. B.
 Jones, Mrs. H. B., Jr.
 Jones, Mrs. Stanley P.
 Jones, Mr. and Mrs. W. Bruce
 Jonson, Miss Alma S.
 Jurgensohn, Miss Eva
 Justice, Miss Bellemore

Kaestner, Mrs. Adolph
 Kane, Mrs. James H.
 Kelleher, Mr. and Mrs. Campbell
 Kelly, Mrs. W. A.
 Kennaugh, Dr. George Q.

Kennedy, Mrs. John R.
 Kent, Mrs. Harry W.
 Ketcham, Henry
 Ketcham, Mrs. Henry
 Kimball, Mrs. Walter S.
 Kimmel, Mrs. Edward
 Kind, Mrs. Maurice
 King, Mrs. George B.
 King, Mrs. Herbert T.
 King, Mrs. Robert L.
 Kinnear, Mrs. Roy J.
 Kirchhoff, Dr. Paul
 Kirk, Mr. and Mrs. Blair
 Knight, Miss Annalou
 Knudsen, Mrs. C. Calvert
 Knudsen, Mrs. Conrad
 Kohler, I. J.
 Kohli, Mrs. Daniel R.
 Kraft, Mrs. Warren E.
 Krause, Mrs. Edward John
 Kruse, Mrs. Henry J.
 Kuebler, Mrs. Lowell
 Kumm, Mr. and Mrs. Ward C.

Lafferty, Mr. and Mrs. Ben
 Lahr, Mrs. Dorothy Fincke
 Lamm, Mr. and Mrs. Stephen R.
 Lamont, R. J.
 La More, Mrs. Joseph V.
 Lamson, Dr. and Mrs. Otis Floyd
 Landreth, Col. and Mrs. Earl
 Lane, Mrs. J. Richard
 Lane, Mrs. Frederick K.
 Lang, Mrs. Julius C.
 Langdon, Mrs. A. H.
 Langer, Dr. Susanne
 Langlie, Mrs. Arthur B.
 Larned, Mrs. H. D.
 Larsen, Mrs. Reuben
 Larson, Mrs. Carl V.
 Larson, Mr. and Mrs. John G.
 Lasher, Dr. and Mrs. Earl P., Jr.
 Laucks, Mrs. H. V.
 Laughlin, Mrs. Robert C.
 Law, Mrs. Myron C.
 Lea, Mr. and Mrs. Richard

Lea, Mrs. William F.
 Leaf, Mrs. A. L.
 Lear, Mr. and Mrs. Harry B.
 Lease, Mrs. Howard S.
 LeCocq, Dr. and Mrs. Edward
 Lee, Dr. and Mrs. Sherman E.
 Leedy, Mrs. George
 Leffler, Rev. Dr. John C.
 Lehmann, Dr. and Mrs. J. H.
 Lepsoe, Finn
 Lessey, Mrs. Luther M.
 Lester, Dr. and Mrs. Charles N.
 Levine, Rabbi and Mrs. Raphael H.
 Levinson, Mr. and Mrs. Benjamin
 Lewis, Mrs. Joseph H.
 Lewis, Mrs. Lester
 Lewis, Mrs. Robert E.
 Lightfoot, Mrs. Oswald B.
 Lilygren, Mrs. Albert J.
 Lind, Major and Mrs. Byron G.
 Lindeman, Mr. and Mrs. Charles B.
 Lindenberger, Dr. Manfred
 Littell, Mrs. Max
 Little, Mr. and Mrs. Herbert S.
 Livengood, Mrs. Marjorie Chandler
 Lochow, Mrs. William
 Lockwood, Mrs. W. R.
 Lomen, Mrs. Alfred J.
 Long, Mrs. George E.
 Loughran, Mrs. Henrietta Adams
 Lovejoy, Miss Jean
 Lowman, Mrs. William H.
 Lowry, Miss Lorna
 Lowry, Miss Stella M.
 Lucas, Mrs. Andrew G.
 Lucas, Mrs. James G.
 Lukanovic, Mrs. Thomas
 Luker, Mrs. John R.
 Lunkley, Mrs. R. E.
 Lycette, Mr. and Mrs. John P.
 Lyons, Miss Hermie M.
 Lyons, Mrs. James F.

Maas, Mrs. Jess
 Macdonald, Miss Dorothy
 Macdonald, Mrs. Ethel
 MacDonald, Mrs. Frederick W.
 MacFarland, Mrs. Joseph P.
 Mackintosh, Mrs. Kenneth
 Major, Miss Marie Austin
 Malloy, Mrs. Angus
 Malmo, Mrs. Erling
 Maloney, Mrs. John W.
 Mander, Dr. and Mrs. Linden A.
 Manthey, Mrs. Marie M.
 Marion, Mrs. Lucien F.
 Marple, Mr. and Mrs. Elliot
 Marple, Mr. and Mrs. Lucius E.
 Marsh, Mrs. Louis S.
 Marshall, Dr. George R.
 Marshall, Mrs. Joseph W.
 Martin, Mrs. John K.
 Martineau, Mrs. Anna
 Mathews, Mrs. Evan J.
 Mattson, Mr. and Mrs. R. B.
 Maxfield, Mrs. Vernon L.
 Maxwell, Mr. and Mrs. Alan Oakley
 Maxwell, Mrs. William J.
 Mayuyama, Junkichi
 McAllister, Mr. and Mrs. Breck P.
 McAusland, Mrs. Robert D.
 McBreen, Robert L.
 McCaffray, Mrs. T. E.
 McCaffray, Mrs. William P., Jr.
 McCauley, Mrs. Betty Cornelius
 McClelland, Mrs. Robert F.
 McCloy, Mrs. R. R.
 McCollister, Mrs. John C.
 McCord, Mrs. Evan S.
 McCreery, Mr. and Mrs. Hugh Edison
 McDonald, Mrs. C. H.
 McDonald, Mrs. H. C.
 McDonald, Miss Mary Jane
 McDougall, Mrs. Neil A.
 McDowell, Mrs. W. Hal
 McEacheran, Mrs. D. E.
 McEachern, Mrs. A. B.
 McFee, Mrs. Joel N.
 McFeely, Mrs. Donald
 McGibbon, Mrs. Paul
 McGoldrick, Mrs. Jack H.
 McGovern, Mrs. J. M.
 McGowan, Mrs. James J.
 McGrath, Miss Anna M.
 McGrath, Mrs. William H.
 McGuire, Mrs. Gerald
 McKenzie, Mrs. Dan A.
 McKenzie, Mrs. Vernon
 McKinstry, Mr. and Mrs. Merrill W.
 McKinstry, Mrs. Robert S.
 McKinstry, Mrs. S. D.
 McLaren, George L.
 McLaren, Mrs. William Gardner
 McLaughlan, Mrs. John D., Jr.
 McLennan, Mr. and Mrs. Millard C.
 McManama, Mrs. Gerald P.
 McMenamin, Mrs. J. M.
 McMillan, William R.
 McMillan, Mrs. William R.
 McNulty, Mrs. R. F.
 McVay, Mrs. James T.
 McVeety, Mrs. H. A.
 Meagher, Mrs. Evans D.
 Meggee, Mrs. Rowland F.
 Mersiel, Augustine F.
 Metheny, Dr. and Mrs. David
 Meyer, Mrs. Donald A.
 Mickelson, Mrs. John L.
 Middlebrook, Mr. and Mrs. Curtis L.
 Mifflin, Mr. and Mrs. Gordon
 Mifflin, Mrs. Wesley J.
 Milburn, Moritz
 Miller, Dr. and Mrs. Delbert C.
 Miller, Mrs. Genette
 Miller, Mrs. Lloyd
 Miller, Mrs. Richard D.
 Miller, Mrs. Vincent D.
 Mills, Mrs. Blake D.
 Misner, Mrs. Hallett S.
 Mitchell, Mrs. Douglas L.
 Mitchell, DuBois
 Mitchell, Mr. and Mrs. Harry O'Daniel
 Mitchell, Mrs. Walter E.
 Moffat, David A.
 Moffitt, Mrs. Thomas
 Mojzisek, Mrs. O.
 Molitor, Mrs. Frank H.
 Monsey, Mrs. R. L.
 Moore, Mrs. Philip E.
 Moore, Dr. Walter A.
 Moores, K. A.
 Moores, Mrs. Kenneth A.
 Moran, Miss Nellie M.
 Moran, Mrs. Paul F.
 Morcom, Dr. and Mrs. Thomas
 Morford, Mrs. Kenneth J.
 Morgan, Mrs. D. B.
 Morisse, Mrs. E. T.
 Moritz, Mrs. Erich A.
 Morris, Mrs. Arthur S.
 Morris, Mrs. Charles
 Morris, Mrs. Earl R.
 Morrish, Mrs. W. A.
 Morrison, Mrs. Earl W.
 Morrison, Mrs. George L.
 Morrison, Nelson
 Mosiman, Mrs. Roscoe E.
 Moss, Mrs. Elmer V.
 Mulhern, Miss M. Elizabeth
 Mullin, Russell B.
 Mumby, Dr. Mildred
 Munger, Mrs. A. R.
 Munson, Mrs. Miller
 Murphy, Mrs. E. M.
 Murray, Mrs. Ray M.
 Myers, Mrs. Guy C.
 Naden, Mrs. Edwin T.
 Nagelvoort, Floris
 Nelsen, Mrs. Evan M.
 Nelson, Mr. and Mrs. A. G.
 Nelson, Mrs. A. V.
 Nelson, Miss Gertrude C.
 Nelson, Dr. and Mrs. Ole A.
 Nelson, R. M. Peltier
 Nelson, Miss Wilma
 Neterer, Mrs. Jeremiah

Neterer, Mr. and Mrs. Samuel J.
 Nettleton, Miss Lulie
 Nevill, Thomas J.
 Newell, Mrs. Richard B.
 Newman, Mrs. Louis M.
 Nichols, Mr. and Mrs. Byron
 Nichols, Mrs. Robert S.
 Nicholson, Mrs. Ralph
 Nickels, Miss Adelaide G.
 Nickum, Mrs. George
 Nickum, Mrs. W. B.
 Nissler, Mrs. Carl C., Sr.
 Nordstrom, Mrs. Elmer J.
 Nordstrom, Mrs. Lloyd W.
 Norton, Mrs. John R.
 Norton, Mrs. Lawrence M.
 Nuckols, Dr. and Mrs. Hugh H.
 Oakes, Mrs. Prescott
 O'Brien, Fred J.
 O'Donnell, Mr. and Mrs. Henry J.
 Odland, Dr. Henry
 Ogle, Mr. and Mrs. Colvin J.
 O'Leary, Mrs. Daniel
 Olmstead, Mrs. Charles R.
 Olson, Mrs. Edward
 O'Rourke, Miss Jeanette
 Orr, Mrs. F. W.
 Orrico, Mrs. Joseph
 Osborn, Mrs. G. R.
 Osten, Dr. and Mrs. Alvin M.
 Ostrander, Mrs. A. Talcott
 Ostrander, Mrs. Harry F.
 Overturf, Mr. and Mrs. Harrison J.
 Owen, Mrs. Henry B.
 Owen, Mrs. Thomas W.
 Owens, Mrs. H. K.
 Page, Mrs. T. K.
 Palmer, Mrs. Don H.
 Palmer, Mrs. L. J.
 Palmer, Mrs. Robert L.
 Panchoy, Mr. and Mrs. D. H.
 Pankratz, Mrs. John
 Paris, Mrs. Ben M.
 Parker, Mrs. Allan L.
 Parker, Mrs. Joe
 Parker, Mrs. Stephen
 Parks, Mrs. F. H.
 Parsons, Mr. and Mrs. George H.
 Parsons, Mrs. Oscar W.
 Paschall, Mrs. Cranston
 Paterson, Mrs. Alex
 Paul, Thomas W.
 Payne, Miss Blanche
 Pearce, Mrs. J. Kenneth
 Pease, Mrs. H. M.
 Pedersen, Mrs. Hans
 Pelly, Mrs. B.
 Pelly, T. M.
 Penfield, Miss Helen
 Perrin, Mrs. Porter G.
 Perry, Miss H. Jeannette
 Perry, P. J.
 Perry, Mrs. Richard W.
 Petersen, Mrs. R. A.
 Peth, Mrs. Kenneth W.
 Petite, Mr. and Mrs. J. E.
 Phelps, Mrs. Dickey
 Philbrick, Mrs. Clay
 Phillips, Dr. James W.
 Phinney, Russell H.
 Phoutrides, Mrs. Stephanos
 Pierce, Mr. and Mrs. Hurl D.
 Pierce, Mrs. Lawrence J.
 Piggott, Mrs. W. Norman
 Pigott, Mrs. William
 Pike, Mrs. Robinson D.
 Pillow, Dr. Randolph P.
 Pinkham, Mrs. Roland D.
 Pitzer, Mrs. John E.
 Planje, Mrs. C. W.
 Plestcheeff, Mr. and Mrs. Theodore
 Plum, Dr. and Mrs. Frank A.
 Politzer, Miss Helene
 Pollock, Miss Barbara
 Polson, Mrs. F. Arnold
 Polson, Mrs. Harold L.
 Porter, Henry L.
 Powell, Mrs. F. F.
 Powell, Mrs. George Van Tuyl
 Pratt, Mrs. Henry Arthur
 Prince, Mrs. A. A.
 Prince, Mrs. James E.
 Prince, Mrs. Kenneth J.
 Proby, Mrs. Lovell J.
 Purcell, Mrs. H. G.
 Rabel, Mrs. Irvine B.
 Rabel, Mrs. O. R.
 Rattray, Mr. and Mrs. Maurice
 Raymond, Miss Eugenia
 Reagh, Mrs. John Dallas
 Redman, Mrs. Arthur P.
 Reed, Mr. and Mrs. William G.
 Rehbock, Mr. and Mrs. Ralph H.
 Reichardt, Mrs. H. J.
 Reynolds, Miss Clara
 Rhodes, Mrs. Harry A.
 Richards, Mrs. H. M.
 Richards, Mr. and Mrs. John Stewart
 Richards, Mrs. Seth, Jr.
 Richardson, Mr. and Mrs. S. H.
 Riddell, Mrs. George X.
 Riebe, Mrs. Pauline
 Riley, Mrs. Edward F.
 Rind, Mrs. Martin B.
 Ringheim, Mrs. Stanley E.
 Ritter, Mr. and Mrs. John
 Robbins, Mrs. H. M.
 Roberts, Mr. and Mrs. Ray C.
 Robertson, Mrs. James P.
 Robinson, Mrs. Dwight E.
 Robinson, Mrs. J. H.
 Robinson, Mrs. L. B.
 Rode, Mr. and Mrs. Alfred E.
 Roe, Mrs. A. J.
 Rogers, Mrs. Millard B.
 Rogers, Mrs. Philip M.
 Rolfe, Mrs. Hamilton Cawley
 Rooks, Mrs. A. H.
 Root, Mrs. Cornelius
 Roseleaf, Miss Dorothy
 Rosling, Mrs. Edward L.
 Ross, Mr. and Mrs. Charles W., Jr.
 Rottler, Mrs. Clarence T.
 Rourke, Mr. and Mrs. William D.

Rowe, Rear Admiral
Gordon, USN (Ret.)
Roys, Dr. and Mrs. Ralph
Rubinstein, Mrs. S.
Rudow, Mrs. Eugene W.
Runciman, Mr. and Mrs.
George
Russell, Mrs. Hugh H.
Russell, Miss Pearl
Ryan, Mr. and Mrs. John
E.

Salmon, Mrs. Harvey W.
Salsbury, Mrs. Allen
Vance
Samuelson, Mrs. Arthur
William
Sandstedt, R. B.
Saunders, Mrs. Eugene
D.
Sayres, Mrs. Arthur R.
Schaublin, Mrs. Alfred
Schenck, Mrs. E. E.
Schmidl, Fritz
Schmitt, Mrs. Nicholas
Schmitz, Dr. and Mrs.
Henry
Schneider, Mrs. Daniel
D.
Schoenfeld, Mr. and Mrs.
Berman
Schoenfeld, Mr. and Mrs.
L. Kenneth
Schoenfeld, Mrs. Ralph
Schwabacher, Mrs. Leo
Schwabacher, Mr. and
Mrs. Morton L.
Schwager, Mrs. Alvin
Schweitzer, Mrs. Louis H.
Scribner, Mrs. Belding V.
Scrubby, Mrs. W. W.
Seiler, Mrs. M. A.
Selby, Kenneth E.
Service, Miss Marya
Sethness, Mrs. Charles O.
Sevener, Mrs. Bernard C.
Sewall, Mrs. Harry B.
Sgalitzer, Mrs. G. W.
Shackelford, Mrs.
William J.
Shafer, Mrs. Norton
Shannon, Mrs. W. D.
Shaw, Mrs. Gordon T.
Sheehan, Dr. and Mrs.
T. V.
Sheffield, Mrs. J. T.
Shelton, Harry

Shephard, Miss Mabel
Shields, Robert M.
Shih, Mrs. Vincent Y. C.
Shorts, Mr. and Mrs.
Bruce
Shreve, Miss Betty Lou
Shryock, Miss Dorothy
Sigman, Mrs. Sam F.
Silberman, E. and A.,
Galleries
Sill, Mrs. E. G.
Simon, Mr. and Mrs.
Arthur E.
Sjoblom, Mrs. K. V.
Skeel, Mrs. E. L.
Skeel, Mrs. Willard E.
Skinner, Mrs. Swalwell
Skowronski, Mrs. Hella
Slover, DeForest A.
Small, Mr. and Mrs. Veo
Fuller
Smetheram, Mrs. F. E.
Smith, Mrs. Allan E.
Smith, Mrs. Elston A.
Smith, Mr. and Mrs.
Ford E.
Smith, Harold Vincent
Smith, Hugh A.
Smith, Mr. and Mrs.
Irving S.
Smith, Mrs. Kiert S.
Smith, Miss Lulu M.
Smithson, Mrs.
Elizabeth A.
Snow, Mr. and Mrs.
Howard J.
Snow, Mrs. Wayne
Snyder, Miss Frieda K.
Sorensen, Miss Amelia
Soth, Mr. and Mrs.
Phillip
Spangler, J. W.
Spickard, Mrs. Vernon
W.
Spracher, Mr. and Mrs.
Dwight L.
Sprague, Robert W.
Sprague, Mrs. Wendell P.
Spring, Mr. and Mrs.
William A.
Staadecker, William B.
Stabler, Mrs. Nina V.
Stapleton, Miss Margaret
L.
Stebbins, Mrs. G. Hobart

Steckel, Frederick R.
Steckel, Mrs. Frederick
R.
Steers, Andrew
Sternoff, Mrs. B. T.
Stevens, Mrs. Alexander
R., Jr.
Stewart, Mrs. Alexander
D.
Stewart, Mr. and Mrs.
Donald Dey
Stine, Mrs. J. H.
Stoddard, Miss Virginia
Stoll, Mrs. A. A.
Stream, Mr. and Mrs.
Al J.
Strodroff, Mrs. W. F.
Strohecker, Mrs.
Franklin
Strong, Mrs. Dexter K.
Studebaker, Mr. and Mrs.
John P.
Stull, Mrs. Franklin G.
Sturges, Mrs. George S.
Sumbardo Mrs. Martha
K.
Sundberg, Mrs. G. A.
Sundquist, Miss Mabel
Sundt, Frederick C.
Sundt, Mrs. Frederick C.
Sutherland, Mr. and Mrs.
Ross
Swanson, Mrs. Carl L.
Sweany, Mrs. Gordon
Swigart, Mrs. Howard F.
Sylliaasen, Mrs. Melvin

Tanner, W. V.
Tashian, Mrs. Souren H.
Taylor, Mrs. Edward R.
Taylor, Mrs. Roy F.
Teeter, Mr. and Mrs.
William S.
Templeton, Mrs. B. E.
Tennant, E. G. Ted
Terrell, Miss Elizabeth
Thomas, Edward B.
Thomas, Mrs. J. D., Jr.
Thomas, Mrs. Will
Thomas, Mr. and Mrs.
W. C.
Thompson, Mrs. Howard
G.
Thompson, Mrs. Sophye
J.
Thorgrimson, Mr. and
Mrs. O. B.

Thorp, Dr. and Mrs.
Donald J.
Thurber, Miss Muriel
Thurber, Colonel and
Mrs. Philip L.
Timm, Mrs. Harry L.
Tison, Mrs. James
Chisolm, Jr.
Titcomb, Mrs. F. R.
Todd, C. F.
Totten, Mr. and Mrs.
Morrell P.
Townsend, Mrs. George
Tritle, Mrs. G. W.
Trostel, Mrs. George W.
Troyer, Mrs. F. Gregory
Tucker, Bert, A.
Tuesley, Mrs. Walter H.
Tupper, Miss Emily
Hartwell
Turner, Miss Anna C.
Turner, Mrs. Lester
Turner, Mrs. Stuart W.

Uhlmann, Mrs. W. Paul

Valentine, Miss Jerry
Van Arsdel, Mrs. Paul P.
Van Ogle, Mrs. Louise
Van Patten, Capt. E. H.
Van Skyhawk, Mrs. A. J.
Vaupell, Mrs. L. J.
Villesvik, Mrs. Gordon
Vinal, Mrs. E. L.
Vining, Mrs. Maurice N.
Vogt, Mrs. George C.

Wailes, Mrs. Ronald D.
Walkinshaw, Mr. and
Mrs. Robert B.
Walton, Mrs. Ernest
Russell
Wanamaker, Mrs.
Allison T.

Wardall, Mr. and Mrs.
Ray
Watkins, Mrs. H. M.
Watt, Mrs. Paul H.
Watt, Mr. and Mrs.
Robert Denny
Weber, Mrs. George
Webster, Mrs. Charles
Webster, Mrs. Frank W.
Weeks, Miss Margaret G.
Weil, Miss Sylvia S.
Weiss, Mrs. Frans R.
Weinstein, Mrs. Max
Wells, Mrs. Edward C.
Wells, Mrs. Peter N.
Wells, Mrs. Robert D.
West, Mrs. R. T.
Weter, Miss Winifred E.
Wetherill, Mrs. A. M.
Weyerhaeuser, Mrs. C.
Davis
Weyerhaeuser, Mrs. J. P.
Wheatman, Mrs. Herbert
Wheelon, Dr. Homer
Whitaker, Mrs. Louise C.
White, Mr. and Mrs.
Elmer J.
White, Mr. and Mrs.
Horace A.
White, Mrs. John W.
White, Mrs. Victor Hugo
Whiteman, Mrs.
Glenn W.
Wiggins, Mrs. Charles K.
Wiggins, Mr. and Mrs.
F. A.
Wilbur, Mrs. H. B.
Wilcox, Mrs. Leonard M.
Wilhelm, Dr. Hellmut
Wilkins, Mrs. William J.
Wilkinson, Mrs. Nathan,
Jr.

Willard, Mrs. Stephen W.
Williams, Mrs. Andrew
Murray, Jr.
Williams, Mr. and Mrs.
DeWitt
Williams, Dr. George T.
Williams, Mr. and Mrs.
W. Walter
Williamson, Mrs. Estes J.
Wills, Mrs. Charles S.
Wilson, Mrs. Gale E.
Wilson, Mrs. George S.
Wilson, Miss Kathryn
Wilson, Mrs. Worrall
Wilson, Mrs. William T.
Wilton, Mrs. Aubrey
Wiltsie, Dr. and Mrs.
Sherald F.
Winkler, Mrs. G. S.
Winslow, Mr. and Mrs.
K., Jr.
Wolf, Mrs. Arthur P.
Wood, Mrs. Carl Paige
Wood, Miss Clara Louise
Woodley, Mrs. Letha
Woodruff, Mrs. J. Knox
Woolsey, Mrs. A. F.
Wright, Mrs. Raymond
G.
Wright, Mrs. Willard J.
Wylie, Mrs. James W.

Yeakel, Mr. and Mrs.
Willard R.
Young, Mrs. Thomas B.
Youngblood, Mrs. C. T.
Younger, Mrs. Walcott
Younglove, Mrs. Earl, Jr.

Zeller, Mrs. George
Zener, Mrs. Robert G.
Zimmerman, Mrs. J. A.
Zimmerman, Philo R.

ASSOCIATE MEMBERS

Abbott, W. E.
Adams, Mrs. Howard A.
Adams, Mrs. William
Albers, Mrs. George
Alexa, Mrs. Stan A.
Alvarez, Mrs. Manuel
Anderberg, Mrs. M. O.
Anderson, Mrs. A. E.
Anderson, Mrs. Richard
H.

Bacon, Mrs. Cecil H.
Badham, Mrs. Fred S.
Bailey, Mervyn R.
Baker, Mrs. Mildred
Balerud, Mrs. Colmer
Barr, Mrs. Griscom
Baxter, Mrs. C. H.
Beerman, Mrs. E. W.
Behrns, Hilda, M.D.
Bell, Mrs. Arthur W.
Bell, Miss Mildred

Bennie, Mrs. David G.
Bergseth, Mrs. Oscar
Bernard, Mrs. W. H.
Bisazza, Miss Charlotte
Bissell, Mrs. Morton
Black, Miss Marjorie M.
Blackwell, Miss
Wenonah
Bloedel, Miss Virginia
Prentice
Bollman, Mrs. Marie A.

Bovee, Mrs. D. G.
Braddick, Mrs. Cecil H.
Braddick, Mrs.
Henderson B.
Brazeau, Wendell
Brinkley, Miss Clara
Bristol, Mrs. Olive
Brockman, Mrs. R. E.
Brooke, Mrs. Glenn A.
Brown, Mrs. Alton
Brown, Mrs. Dana W.
Brown, Mrs. H. P.
Brown, Mrs. Walter
Bundas, Rudolph
Burcham, Mrs. H. H.

Campbell, Mrs.
Robert A.
Caplan, Irwin
Carl, Mrs. Emil, Jr.
Carlander, Miss Anne
Carter, Mrs. H. A.
Catlett, Fred W.
Catlett, Mrs. Fred W.
Cauthorn, Jess Dan
Cavanaugh, Miss Molly
Cavanaugh, William
Annesley
Cederwall, Mrs. I. H.
Chalfant, Miss Emma B.
Chamberlain, Mrs. Martin
N.
Christensen, Mrs.
Rudolph
Clapp, Matthew
Clark, Mrs. Everett P.
Clark, Mrs. Kenneth
Clark, Mrs. William G.
Clise, Miss Sylvia
Colby, Mrs. William R.,
Jr.
Cole, Miss Miriam E.
Condon, Mrs. Alonzo
Condon, Mrs. James W.,
Jr.
Cook, Mrs. A. R.
Cook, Mrs. Blanche
McLane
Cooper, Miss Louise
Merrill
Couper, Mrs. W. E.
Crawford, Miss Elda N.
Crosser, Mrs. C. A.
Crouse, Mrs. Carl N.
Cruikshank, Mrs. Burt G.
Cultum, Mrs. G. L.
Curtis, Miss Elizabeth L.

Dahl, Miss Bernice I.
Dale, Mrs. D. H.
Daly, Mrs. Frank W.
Dalzell, Mrs. R. A.
Dameyer, Mrs. Christian
Day, David R.
Day, Mrs. Robena
Dean, Mrs. F. M.
Dean, Mrs. O. T.
de Cillia, Mrs. Grethe
de Steiguer, Mrs. George
E.
Detwiller, Mrs. W. K.
Dodge, Miss Alice
Doughty, Mrs. William F.
Douglas, Mrs. Walter T.
Dueber, Miss Charlotte
Duncan, Mrs. John A., Jr.
DuPen, Everett George

Edwards, Mrs. Adeline J.
Elliott, Mrs. Judd M.
Ellis, Mrs. Helen M.
Engley, Mrs. A. J.
Erickson, Mrs. Olga
Eyman, Mrs. Lewis E.

Fales, Mrs. Gilbert R.
Farmer, Mrs. L. L.
Featherstone, Miss
Marion
Fischer, Mrs. John
Fisher, Mrs. Raymond
Flash, Philip N.
Forsyth, Mrs. Lydia E.
Fowler, Miss Elizabeth
Franklin, Miss Harriet
Freedman, Mrs.
Marion H.
Freeman, Dr. Albert V.
Frew, Miss Rosamond E.
Fullington, Miss Mary
Fulton, Miss Lois M.

Geoffroy, Mrs. Jack M.
Giger, Mrs. Ross E.
Glazer, Miss Sandra
Gleason, Miss Belle
Glenn, Miss Nancy E.
Goddard, Mrs. Leverett L.
Goetz, Mrs. Harry L.
Gose, Mrs. J. Gordon
Gowdey, Mrs. Dwight
Graves, Mrs. L. Wallis
Gray, Mrs. Alex A.
Gray, Mrs. Max L.
Greathouse, Mrs. Walser
S.

Gregory, Mrs. L. E.
Griffin, Mrs. Evgania
Groninger, Mrs. Robert
R.
Grossman, Mrs. Lisel
Salzer

Hadley, Mrs. Roy O.
Hanson, Mrs. Isabel
Harrington, Mrs.
Edward M.
Hassenmiller, Mrs.
Lyndon
Heady, Miss Phyllis
Heald, Mrs. Lucy Wells
Herford, Miss Marjorie
Hetlesater, Mrs.
Elisabeth Willas
Hildreth, Mrs. Daisy
Wood
Hill, Mrs. W. Ryland
Hollowell, Mrs. Lee
Horner, Mrs. A. Morley
Hosmer, Mrs. R. L.
Howes, Mrs. Robert
Humber, Mrs. Irving
Hummel, Mrs. W. G.
Hurley, Miss Helen H.

Irvine, Mrs. Demar

Jackson, Mrs. Maurice
Jacobs, Mrs. Orange
Jameson, Mrs. Charles A.
Johanson, Erik
Johns, Miss Helen
Johnson, Mrs. Albert J.
Johnson, Miss Martha R.
Johnson, Miss Pauline
Jones, Mrs. Calvin L., Jr.
Jones, Mrs. J. Percival
Joslin, Mrs. Falcon

Kasanovic, George
Keller, Dale
Kelsey, Miss Ruth
Kenney, Mrs. S. E.
Kiefer, Mrs. J. B., Jr.
Kilpatrick, Mrs. Franklin
J.
King, Mrs. Henry Hunt
Kirkendall, Mrs. R. J.
Kirsten, Richard
Kitts, Miss Carrie L.
Knight, Miss Mary E.
Kullberg, Miss Jule H.

Ladd, Mrs. James R.
Lambert, Mrs. J. A.
Lee, R. C.
Lehmann, Miss Anna D.
Lembke, Mrs. Walter
Lemley, Miss Beatrice
Lenfesty, Mrs. Robert
Lenggenhager, Werner
Leonard, Mrs. A. W.
Levinson, Mrs. Sam L.
Lile, Mrs. Minor C.
Litvin, Mrs. David
Llewellyn, Miles L.
Logan, Mrs. George
Lorentzen, Miss Harriett
Lorig, Dr. Arthur N.
Losey, Mrs. Blanche
Morgan
Loveless, Mrs. Milo J.
Lumbard, Mrs. Frances
Lumbard, Mrs. Hugh
Lyle, Mrs. Jeannette E.
Lytle, Miss Mary

MacAdam, Mrs. V. L.
MacIntyre, Mrs. C. A.
Manuel, Mrs. Terry
Marontate, Mrs.
Frederick J.
Marriott, Mrs. A. K.
Mason, Mrs. W. L.
Matterson, Mrs. Roy C.
Mattison, Miss Helen
Mauk, Mrs. John S.
Maxwell, Miss Mary
Bliss
McAusland, Mrs.
Robert R.
McCuskey, Mrs. C. L.
McKinnell, Mrs. J. F.
McLeod, Mrs. Teresia
Kiesel
Mears, Mrs. Katherine B.
Medlock, Mrs. Armetta
Meyer, Miss Rita Maria
Middleton, Mrs. Myrtle
Miller, Mrs. Alfred
Moore, Mrs. French
Moran, Miss Edna E.
Morck, Mrs. Ethel Poole
Morgan, Mrs. Elisha
Morrison, Mrs. W. G.
Morse, Miss Alice A.
Morse, Mrs. John M.
Mucklestone, Mrs.
Stanley M.
Mudge, Mrs. James D.

Mund, Mrs. Vernon A.
Murphy, Mrs. Matthew
M.
Murray, Douglas A.
Myers, Miss Mary
Paroda

Nation, Mrs. A. C.
Nelms, Richard A.
Nelson, Mrs. John E.
Newman, Mrs. Frank, Jr.
Nobles, Orre N.
North, Mrs. Esther E.
Norwood, Mrs. Carlisle
Nystrom, Miss Ruth E.

Oldham, Mrs. R. P.
Oles, Mrs. Helen Louise
Olson, Mrs. Raymond E.
Osborne, Mrs. Douglas
Oxford, Mrs. Gladys

Page, John W.
Page, Mrs. John W., Sr.
Parvin, Mrs. William
Pascoe, Miss Myra A.
Patten, Mrs. Charles E.
Patterson, Ambrose
Patterson, Mrs. Ambrose
Patterson, Mrs. M. P.
Paul, Mrs. John D.
Pearson, Mrs. Albert S.
Pearson, Mrs. N. A.
Peck, Mrs. Harold W.
Peck, James Edward
Pelton, Miss Anna M.
Pence, Mrs. W. Ross
Penington, Miss Ruth
Esther
Perryman, Mrs.
Charles R.
Petley, Mrs. B. H.
Phillips, Mrs. Carlton
Shaw, Jr.
Phillips, Miss Jessie W.
Platt, Mrs. John Locke
Poole, Miss Jessie Lee
Pope, Mrs. E. T., Jr.
Porter, Miss Florence A.
Portmann, Miss Frieda
Powell, Dr. A. C.
Powell, Mrs. A. C.
Powers, Mrs. Francis F.
Preston, Mrs. Frank H.
Pruett, Mrs. E. W.
Purple, Mrs. F. E.
Purse, Mrs. Walter

Pyle, Stephen D.

Ransom, Mrs. Dorothy
Rasmussen, Mrs. Jon
Raymond, Mrs. W. Lloyd
Reynolds, Miss Helen M.
Rising, Mrs. E. C.
Robson, Mrs. Theodore
T.
Rogers, Mrs. W. Gordon
Rohan, Mrs. Nell
Rowntree, Dr. Jennie I.
Ruff, Mrs. David F.
Ruggiero, Giovanni
Russell, Mrs. B. A.

Sargent, Mrs. Joseph
Schenk, Miss Florence
Schluter, Miss Lorraine
Schoeppl, Miss
Elizabeth M.
Scott, Mrs. Harold L.
Seijas, Mrs. Army A.
Sells, Mrs. Ella Van
Woert
Seymour, Mrs. Glen L.
Sherwood, Miss Mildred
Shouldice, Miss Bernice
Shroat, Mrs. Loren G.
Silver, Max A.
Sivertz, Mrs. Victorian
Small, Mrs. Edward
Hayes
Smith, Mrs. W. Philip
Snyder, Mrs. Edgar C.
Spector, Mrs. Ivar
Stark, Miss Inez
Stevens, Mrs. M. G.
Stone, Mrs. Clarence
Lyman
Storm, Mrs. Jerome R.
Stranach, Mrs. Katherine
Struve, Mrs. Frederic K.
Stuart, Mrs. Charles E.
Sully, Mrs. Charles D.
Sumbardo, Alessandro H.
Surace, Mrs. J. P.
Svare, Richard J.
Swanson, Mrs. Starr A.
Swanson, Mrs. S. M.
Swift, Mrs. Paul K.

Taylor, Mrs. Fred W.
Telford, Mrs. Mary M.
Teufel, Mrs. George E.
Thayer, Mrs. Lois Mae

Thomas, Mrs. Paul G.	Waldo, Mrs. W. E.	Willis, Mrs. Leota
Thomle, Miss Kristine	Walker, Miss Ruth	Geraldine
Thompson, Mrs. Charles	Warren, Mrs. Ruth R. S.	Wilson, Miss
W.	Washington, James	Florence M.
Thomson, Mrs. David	Winston, Jr.	Wilson, Mrs. John
Thomson, Miss Marion	Webb, Mrs. Nell	Wilson, Mrs. Joy
W.	Weil, Mrs. Robert L.	Wilson, Ron
Tilmont, Mrs. Paul A.	Wells, Miss Mary Ann	Winger, Mrs. R. M.
	Wells, Thomas W.	Wittenberg, Mrs. F. F.
Van Horn, Mrs. Robert	Wenke, Mrs. Francis	Wood, Mrs. Leighton H.
Van Ness, Mrs. Virginia	Wendt, Mrs. Fabens	Woodward, Mrs. W. C.
C.	White, Mrs. H. O.	Wright, Mrs. Elias A.
Vaupell, Miss Helen K.	Whitney, Mrs. W. T.	
von Andersen, Mrs. B. P.	Whittaker, Miss Martha	Zallinger, Franz
	Belle	Ziegler, Mrs. Eustace P.
Wadlington, Mrs. E. R.	Willeke, Mrs. Hazel	