



**SEATTLE ART MUSEUM**

ANNUAL REPORT  
2000/2001



## LETTER FROM THE PRESIDENT and DIRECTOR

November 2001

We write this letter at a time like no other in our nation's history. The events of the past two months have strengthened our belief that art affirms life—promoting understanding and healing. We are thankful that during times of uncertainty, the Seattle Art Museum can be a place of refuge and inspiration, bringing forth the best of the human spirit.

We are proud of this and the many other roles the Seattle Art Museum plays in our community. We hope that you—our dedicated supporters, volunteers, and staff—share our pride in the many accomplishments outlined in this 2000/2001 Annual Report. We watch with gratitude and admiration each day as you help guide the museum to new levels of success.

Downtown we celebrated the Year of America. *Twentieth-Century American Art: The Ebsworth Collection* brought great works of art by Edward Hopper, Georgia O'Keeffe, and many other artists to Seattle. We are honored that Trustees Pamela and Barney Ebsworth selected SAM and the National Gallery of Art in Washington, D.C., as the two venues for their prestigious collection. *John Singer Sargent* was the final exhibition organized by Trevor Fairbrother, outgoing Deputy Director for Art/Jon and Mary Shirley Curator of Modern Art and internationally recognized Sargent scholar. In Trevor's honor, Sargent's portrait of Léon Delafosse was acquired for our growing collection of American paintings.

From May to late August, we featured *Treasures from a Lost Civilization: Ancient Chinese Art from Sichuan*. Curated by Jay Xu, The Foster Foundation Curator of Chinese Art, it was accompanied by a handsome, scholarly publication. Featuring stunning bronzes, jades, and ceramics, all lent by the People's Republic of China, this exhibition and an international symposium advanced our understanding of the evolution of Chinese civilization. Nearly five years in the making, this exhibition was a tremendous undertaking, and its caliber, complexity, and scope will be remembered as a benchmark in our history. Truly an international effort, it travels in 2001/2002 to three venues—the Kimbell Art Museum in Fort Worth, the Metropolitan Museum of Art in New York, and the Royal Ontario Museum in Toronto. We are thankful to The Boeing Company for its early and unprecedented support—its gift was SAM's first-ever \$1 million grant from a corporation for an exhibition.

While *Treasures from a Lost Civilization* was the central show in the Year of China, the Seattle Asian Art Museum in Volunteer Park featured programs and exhibits celebrating the depth of Chinese art and culture, including *The Embodied Image: Chinese Calligraphy from the John B. Elliott Collection*. Other highlights at

SAAM included *Sheer Realities: Clothing and Power in Nineteenth-Century Philippines*; an exhibition of Hirado ware, a much-admired type of Japanese porcelain; and *Explore Korea: A Visit to Grandfather's House*. All of these projects, as well as our collections and education programs, increased understanding of Asian cultural traditions.

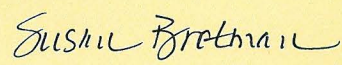
Another hallmark of the year was the installation at Volunteer Park of Alexander Calder's magnificent 39-foot high stabile *Eagle*, a harbinger of the Olympic Sculpture Park and a major recent acquisition thanks to the generosity of Jon and Mary Shirley. After an international competition, the New York-based architectural team of Marion Weiss and Michael Manfredi was selected to lead the design team for the eight-acre park. Scheduled to open in 2004, it will be our third campus as SAM extends its reach to the waterfront.


In January, we celebrated the successful completion of the Century Endowment Campaign. Under the fine leadership of Faye Sarkowsky and Virginia Wright, we exceeded our ambitious goal by securing \$46 million in support. This financial foundation will ensure that all areas of the museum—collections to exhibitions, programming to facilities—will be sustained for the benefit of future generations. We are deeply indebted to the many who contributed so generously.

We welcomed two talented senior staff, both filling new positions. Victoria Moreland, Director of Community Affairs, will oversee the initiative *Deepening the Dialogue*, funded by a generous four-year grant from the Wallace-Reader's Digest Fund. This initiative will develop programs at all levels that will increase community involvement and diversity. Nicholas Dorman, Chief Paintings Conservator, will direct the creation of a state-of-the-art conservation studio. He will ensure that SAM's collections receive optimum care and serve as a regional resource.

It is our honor to recognize Brooks Ragen, whose term as Chairman of the Board of Trustees ends this fall. During his tenure, and before that as President, Brooks has led by example, showing extraordinary commitment to SAM and his contributions will be long remembered. Without fail, Brooks has been a resounding voice of encouragement, wisdom, and good counsel to us all and we are grateful for the difference he has made.

Throughout this Annual Report, SAM's major departments highlight their work during 2000/2001. Please take a few moments to share in the success. We greatly appreciate and thank you for the role you played in making it happen.

  
 Susan Brotman  
 President

  
 Mimi Gardner Gates  
 The Illsley Ball Nordstrom Director

## BOARD OF TRUSTEES

As of June 30, 2001

### OFFICERS

Brooks Ragen, Chairman  
 Susan Brotman, President  
 Christine Nicolov, Vice President  
 Jon Shirley, Vice President  
 Stanley Savage, Treasurer  
 Watson Blair, Secretary

### TRUSTEES

Michael Alhadeff  
 Margaret Allison  
 Patrice Auld  
 Watson Blair  
 Jeffrey Brotman  
 Susan Brotman  
 Steven Clifford  
 Oliver Cobb  
 Richard Cooley  
 Brad Davis  
 Dan Dierdorff  
 Patrick Dineen  
 Barney Ebsworth  
 Pamela Ebsworth  
 Margery Friedlander  
 P. Raaze Garrison  
 Vicki Griffin  
 Lyn Grinstein  
 Helen Gurvich  
 Betty Hedreen  
 Ray Ifert  
 Mary Ann James  
 Mary Kerr  
 Janet Ketcham  
 Christina Lockwood  
 Barbara Malone  
 David Maryatt  
 Sally Maryatt  
 Dipti Mathur  
 Charles Mitchell  
 John Moga  
 Gail Morgan  
 Scott Morris  
 Sally Neukom  
 Assunta Ng  
 Christine Nicolov  
 Linda Nordstrom  
 Sally B. Nordstrom  
 Ruth Nutt  
 James Olson  
 John Policar (Seattle Works Intern)  
 Brooks Ragen  
 Constance Rice  
 Elizabeth Roberts  
 Sam Rubinstein

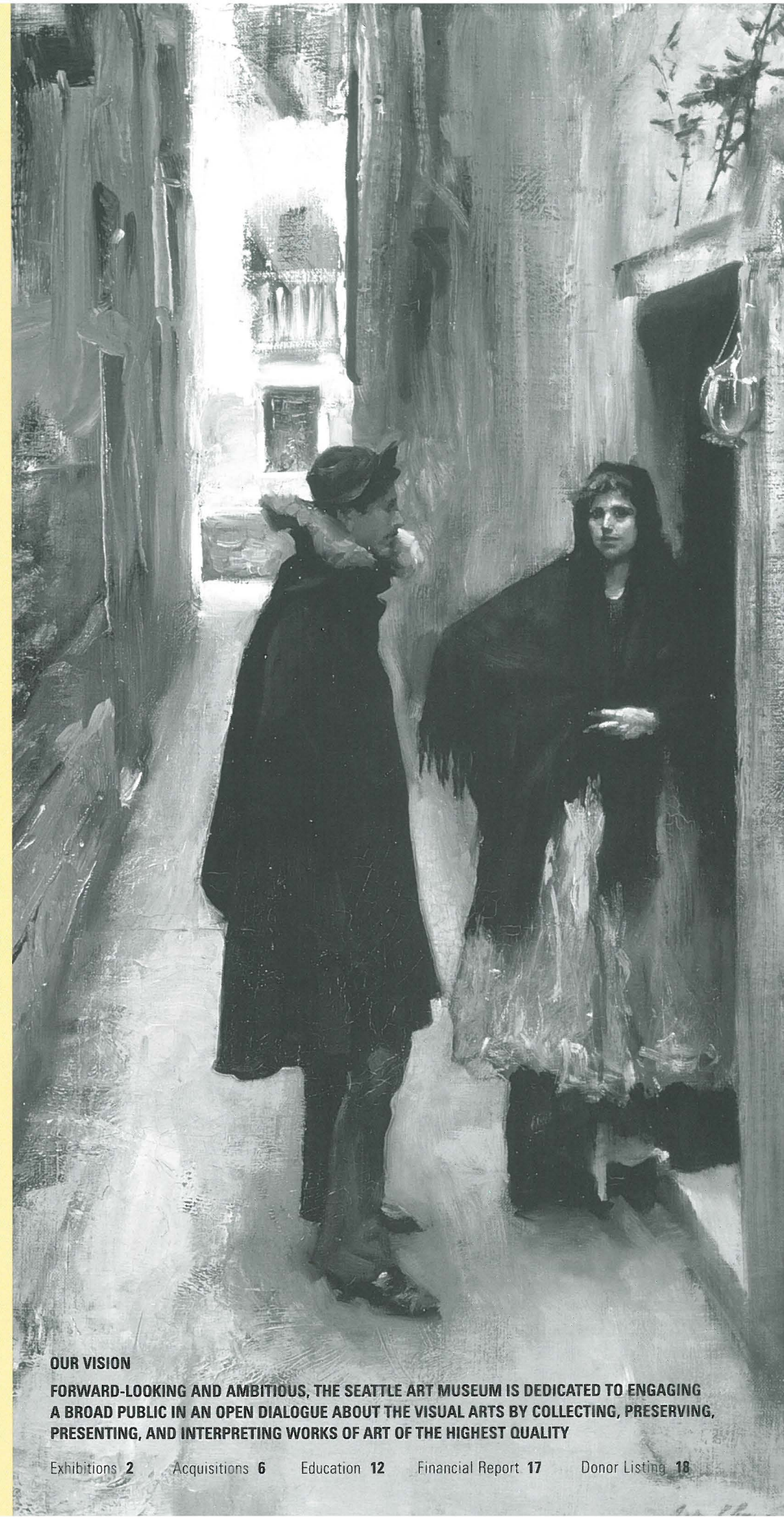
Faye Sarkowsky  
 Herman Sarkowsky  
 Stanley Savage  
 Thomas Schick  
 Roberta Sherman  
 Jon Shirley  
 Charles Simonyi  
 Kayla Skinner  
 Joan Stonecipher  
 Winnie Stratton  
 Robert Strong  
 Althea Stroum  
 Daphne Tang  
 Margaret Taylor  
 Gerard Tsutakawa  
 David Utterberg  
 Susan Vititoe  
 Griffith Way  
 Richard Weisman  
 Charles Wright  
 Virginia Wright  
 Ann Wyckoff

### HONORARY TRUSTEES

Nancy Alvord  
 Robert Arnold  
 Thomas Barwick  
 Jane Davis  
 P. Cameron DeVore  
 Robert Dootson  
 Anne Gerber  
 Marshall Hatch  
 John Hauberg  
 C. Calvert Knudsen  
 Jean Radford  
 Phillip Renshaw  
 Mary Robinson  
 Langdon Simons  
 Bagley Wright

### EX-OFFICIO TRUSTEES

Ann Barwick  
 Christine Burgoyne  
 Sandy Carlson  
 Margaret Ceis  
 JoAnn Cowan  
 Ruth Eller  
 Billy Howard  
 Lynn Hughes  
 Sally McDonough  
 Margaret Pageler  
 Paul Ritner  
 Paul Toliver  
 Shirley Younglove



### OUR VISION

FORWARD-LOOKING AND AMBITIOUS, THE SEATTLE ART MUSEUM IS DEDICATED TO ENGAGING A BROAD PUBLIC IN AN OPEN DIALOGUE ABOUT THE VISUAL ARTS BY COLLECTING, PRESERVING, PRESENTING, AND INTERPRETING WORKS OF ART OF THE HIGHEST QUALITY

# EXHIBITIONS



Hirado Porcelain of Japan from the Kurtzman Family Collection  
photo: Howard Giske

## SEATTLE ASIAN ART MUSEUM SPECIAL EXHIBITIONS

Along with the following special installations, SAAM had ongoing exhibitions from its collections of art from China, Japan, Korea, and Southeast Asia.

### Sheer Realities: Clothing and Power in Nineteenth-Century Philippines

July 1–October 8, 2000  
Attendance: 21,258

*Seattle venue curated by Mary Hirsch*  
The exhibition was organized by the Asia Society, New York. *Sheer Realities: Clothing and Power in Nineteenth-Century Philippines* was supported with major grants from The Philippine Long Distance Telephone Company, The Starr Foundation, Wallace-Reader's Digest Funds, Ernest E. Stempel, the National Endowment for the Arts, San Miguel Corporation, First Philippine Holdings, International Container Terminal Services, Inc., Loida Lewis, and Metrobank Foundation, Inc. Special thanks to Doris Magsaysay Ho and Josie Cruz Natori.

### Hirado Porcelain of Japan from the Kurtzman Family Collection

November 2, 2000–July 8, 2001  
Attendance: 46,806

*Seattle venue curated by Michiyo Morioka*  
This exhibition was organized by the Los Angeles County Museum of Art. Generous funding for this exhibition was provided by the Dean and Mary Thornton Exhibition Endowment with additional support provided by contributors to the Annual Fund.

### The Embodied Image: Chinese Calligraphy from the John B. Elliott Collection

March 1–May 27, 2001  
Attendance: 20,724

*Seattle venue curated by Jay Xu*  
The exhibition, organized by The Art Museum, Princeton University, was made possible by grants from the Publications Committee of the Department of Art and Archaeology, Princeton University; the National Endowment for the Arts; The Henry Luce Foundation, Inc.; The Andrew W. Mellon Foundation; Martha Sutherland Cheng; the Joint Committee on Chinese Studies of the American Council of Learned Societies and the Social Sciences Research Council; and anonymous donors. Local support provided by: Corporate Council for the Arts/ArtsFund, Seattle Art Museum Supporters (SAMS), Blakemore Foundation, Robert M. Arnold Endowment in Support of Chinese Art, and Mimi Gates Asian Art Endowment. The exhibition, drawn from the collection of The Art Museum, Princeton University, was curated by Cary Y. Liu, Associate Curator of Asian Art, The Art Museum, Princeton University, and Robert E. Harrist, Jr., Associate Professor, Department of Art and Archaeology, Columbia University.

## SEATTLE ART MUSEUM SPECIAL EXHIBITIONS

### Twentieth-Century American Art: The Ebsworth Collection

August 10–November 12, 2000  
Attendance: 90,875

*Seattle venue curated by Trevor Fairbrother*  
The exhibition was organized by the National Gallery of Art, Washington, D.C. Generous support was provided by the Herman and Faye Sarkowsky Exhibition Endowment and PONCHO (Patrons of Northwest Civic, Cultural and Charitable Organizations). Additional funding provided by contributors to the Annual Fund.

### John Singer Sargent

December 14, 2000–March 18, 2001  
Attendance: 177,074

*Curated by Trevor Fairbrother*  
*John Singer Sargent* was organized by the Seattle Art Museum with generous support from the Robert Lehman Foundation, Inc., *Seattle Post-Intelligencer*, the Seattle Arts Commission, and KING 5 Television. Additional funding provided by The Allen Foundation for the Arts, Christie's, The Citibank Private Bank, McCann-Erickson Seattle, the Margery Friedlander Exhibition Endowment, and contributors to the Annual Fund. Additional funding for the Seattle Art Museum publication *John Singer Sargent: The Sensualist* provided by the William E. Weiss Foundation, Catherine and Paul Bittenwieser, and the Harry and Joan Stonecipher Exhibition Endowment. The exhibition featured *John Singer Sargent: Portraits of the Wertheimer Family*, a traveling exhibition organized by The Jewish Museum, New York, which was made possible by a special appropriation obtained by Governor George E. Pataki and the New York State Legislature; with generous support also

provided by the National Endowment for the Arts, a federal agency; Betty and John Levin; The Morris S. and Florence H. Bender Foundation; and the David Schwartz Foundation.

### Treasures from a Lost Civilization: Ancient Chinese Art from Sichuan

May 10–August 12, 2001  
*Curated by Jay Xu*  
Attendance: 101,661

The exhibition was organized by the Seattle Art Museum in collaboration with The Bureau of Cultural Relics, Sichuan Province of the People's Republic of China. The Boeing Company provided the leadership grant for the exhibition with major support from the E. Rhodes and Leona B. Carpenter Foundation. Generous funding for the project also provided by *The Seattle Times*, the Henry Luce Foundation, the Rockefeller Foundation, the Seattle Art Museum Supporters (SAMS), the National Endowment for the Arts, KING 5 Television, Northwest Airlines, and the Kreielsheimer Exhibition Endowment. This exhibition is supported by an indemnity from the Federal Council on the Arts and the Humanities. Additional funding provided by Preston Gates & Ellis LLP, Port of Seattle, Verizon, and contributors to the Annual Fund. A catalogue of the exhibition was published in collaboration with the Princeton University Press. Generous support for the International Symposium was provided by the Blakemore Foundation, the Katherine Ager Baillargeon Endowment, and the Asian Art Council. The technology components for this exhibition were developed by the Seattle Art Museum in collaboration with the University of Washington's Human Interface Technology Laboratory and Motivo. Generous support provided by Hauppauge Computer Works and the James and Jane Hawkanson Exhibition Endowment.



John Singer Sargent  
photo: Howard Giske

### Creating Perfection: Shaker Objects and Their Affinities

October 5, 2000–April 29, 2001  
*Curated by John Kirk and Trevor Fairbrother*  
The exhibition was organized by the Seattle Art Museum in collaboration with the Shaker Museum and Library, Old Chatham, New York. Generous funding for this exhibition provided by Ruth and Bill True, the King County Arts Commission, Microsoft Corporation, and Print Sponsor *Seattle Homes and Lifestyles*. Endowment support provided by the Charles Simonyi Exhibition Endowment. Additional funding provided by contributors to the Annual Fund.

Documents Northwest:  
The PONCHO Series

**Ginny Ruffner: Mind Garden**  
November 2, 2000–February 25, 2001  
*Curated by Trevor Fairbrother*

### SEWN

March 15–July 22, 2001  
*Curated by Tara Reddy Young and Rock Hushka*  
The *Documents Northwest* exhibition series is made possible through the ongoing generous support of PONCHO (Patrons of Northwest Civic, Cultural and Charitable Organizations).

Twentieth-Century American Art:  
The Ebsworth Collection  
photo: Howard Giske





Treasures from a Lost Civilization:  
Ancient Chinese Art from Sichuan  
photo: Howard Giske

## INSTALLATIONS FEATURING THE MUSEUM COLLECTION

In addition to the following special installations, SAM's galleries featured highlights from the museum's collections of art from Africa, Asia, and Europe, and Native American art of the Northwest Coast.

### Language Let Loose

July 15, 2000–April 29, 2001

Curated by Trevor Fairbrother and Tara Reddy Young

### Weird and Whimsical: Northwest Art from the Permanent Collection

January 16–October 14, 2001

Curated by Trevor Fairbrother

### A Maasai Community Adorns a Bride

May 2001–ongoing

Curated by Pam McClusky

### Dürer, Rembrandt, and Goya: Old Master Prints from the Seattle Art Museum Collection

May 31–October 14, 2001

Curated by Chiyo Ishikawa

### Portrait Collaborations: Nineteenth-Century Works from the Permanent Collection

May 31, 2001–March 17, 2002

Curated by Chiyo Ishikawa

### First Person Singular

May 31, 2001–March 17, 2002

Curated by Tara Reddy Young

### Dis-Figured

May 31, 2001–March 17, 2002

Curated by Tara Reddy Young

## PUBLICATIONS

*John Singer Sargent: The Sensualist*

Published by the Seattle Art Museum and Yale University Press in conjunction with the exhibition *John Singer Sargent*. Written by Trevor Fairbrother, Deputy Director of Art/Jon and Mary Shirley Curator of Modern Art from 1996 to 2001. Fairbrother argues that sensuality is what connects otherwise conflicting elements of Sargent's oeuvre, offering a new interpretation of his life and work. Featuring more than one hundred lavishly reproduced oils, watercolors, and sketches. This book was selected as one of the winners of the 2001 Washington State Book Award.

*Ancient Sichuan: Treasures from a Lost Civilization*

Published by the Seattle Art Museum and Princeton University Press in conjunction with the exhibition *Treasures from a Lost Civilization: Ancient Chinese Art from Sichuan*. Edited by Robert Bagley with contributions by Jay Xu, The Foster Foundation Curator of Chinese Art, Michèle Pirazzoli-t'Serstevens, Jenny F So, Lothar von Falkenhausen, Alain Thote, Jessica Rawson, and Michael Nylan. As the first in-depth exploration of a recently discovered Bronze Age culture in Sichuan, scholars examine the regional identity and cultural contact of the region in ways never previously possible. One hundred eighteen color plates by SAM photographer Paul Macapia complement the essays.

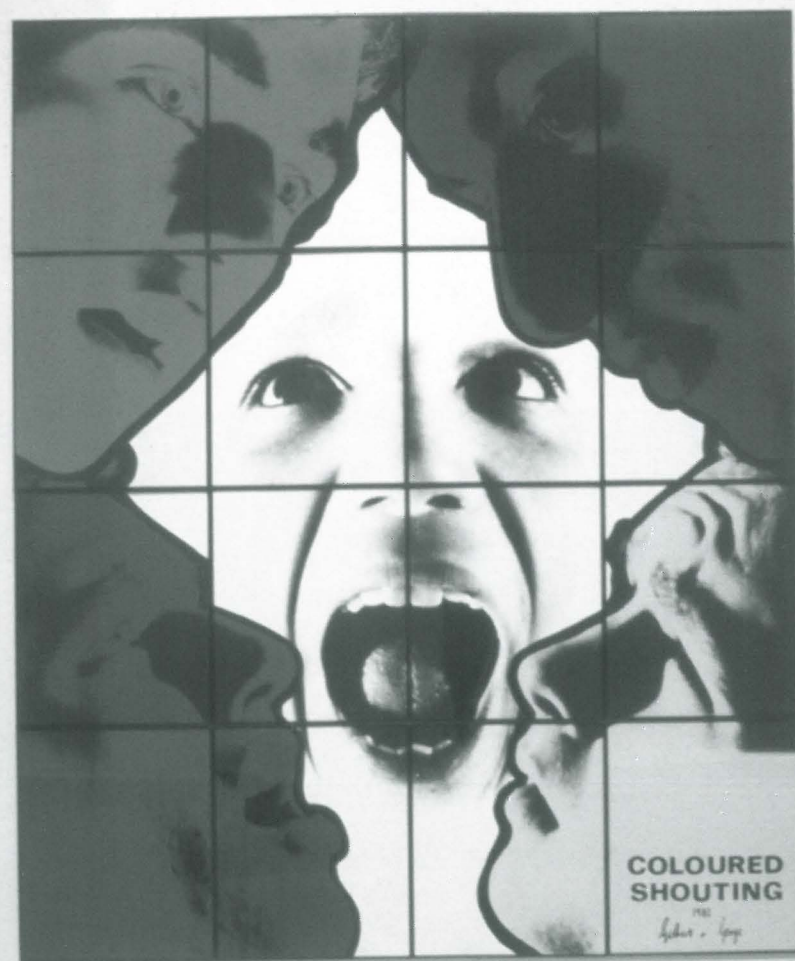
*Serene Pleasure: The Jinglexuan Collection of Chinese Ceramics*

Published by the Seattle Art Museum in conjunction with the exhibition *Wonders of Clay and Fire: Chinese Ceramics Through the Ages*. Written by Wang Qingzheng, Rosemary E. Scott, and Jennifer Chen. Exploring the patterns, shapes, and symbols of the more than sixty exquisite works in this collection, which focuses on Jingdezhen porcelains of the fourteenth century. Sixty-five color photographs by Paul Macapia and Eduardo Calderón.

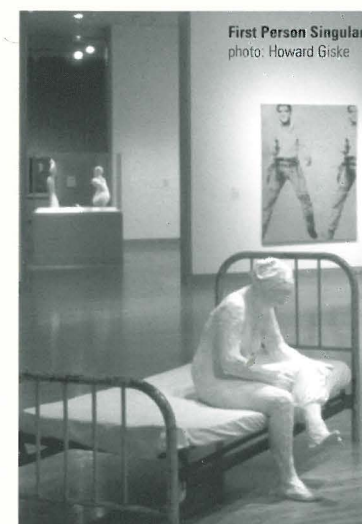
All publications are available for purchase in the SAM Museum Store.

## CONSERVATION

In May SAM's well-established structure for collections care underwent a remarkable development with the establishment of the museum's first in-house conservation department. Over the past decades, the museum has built up a fruitful dialogue and cooperation with conservators in private practice and other institutions. The Conservation Department will encourage these relationships while integrating collections care and the treatment of works of art within the museum. Leading the department as Chief Paintings Conservator is Nicholas Dorman, coming from the Doerner Institut of the Alte Pinakothek in Munich. The space for the conservation studio and laboratory was allocated on the fifth floor during planning for the downtown museum but has remained unfinished since that time. The first major project of the Conservation Department will be to transform the 1,600-foot raw space into a state-of-the-art studio for the treatment and analysis of a whole variety of objects. The formation of the conservation facility has been made possible by the extraordinary commitment of our donors. The Neukom Conservation Studio was created through a challenge grant from The Andrew W. Mellon Foundation with matching contributions from the Bill and Melinda Gates Foundation, Sally and Bill Neukom, and Charles Simonyi. Additional capital funding was provided by The King County Arts Commission Hotel/Motel Tax Fund, the Norman Archibald Charitable Trust, and the Seattle Foundation.



Language Let Loose  
photo: Howard Giske



# ACQUISITIONS



Emily Kame Kngwarreye, Australian Aboriginal (Utopia Station, Northern Territory), 1910–1996, **Wild Yam Dreaming**, 1995, acrylic on linen, 59 13/16 x 48 1/16 in., Gift of Margaret Levi and Robert Kaplan, 2000.157, photo: Paul Macapia

## COLLECTIONS

Collection of Ninety-six works of modern art featuring artists of the Northwest

Gift of Anne Gerber  
2000.164–.214, SC2000.215–.216, IS2000.2–.27

Collection of Thirty Vietnamese ceramics from the Hoi An shipwreck

Gift of Mary and Cheney Cowles, 2000.124–.153

Collection of Twenty-seven works of art from Nigeria: three Calabash bowls, twenty Calabash spoons, two bracelets, one hat, and a commemorative cloth for President Nnamdi Azikwe

Gift of Mary S. Grafious, 2000.71–.97



Chuck Close, American, b. 1940, **Self-Portrait**, 2000, 120 color silkscreen, 65 1/2 x 54 1/8 in., Seattle proof, Gift of Chuck Close in honor of Jon and Mary Shirley, 2001.30, photo: Paul Macapia

## MODERN AND CONTEMPORARY ART

### Laylah Ali

American, b. 1968

*Untitled*, 2000

Gouache on paper  
19 1/8 x 13 3/8 in.

Purchased with funds from the Volunteers' Association and the General Acquisition Fund, 2000.109

### Albert Bierstadt

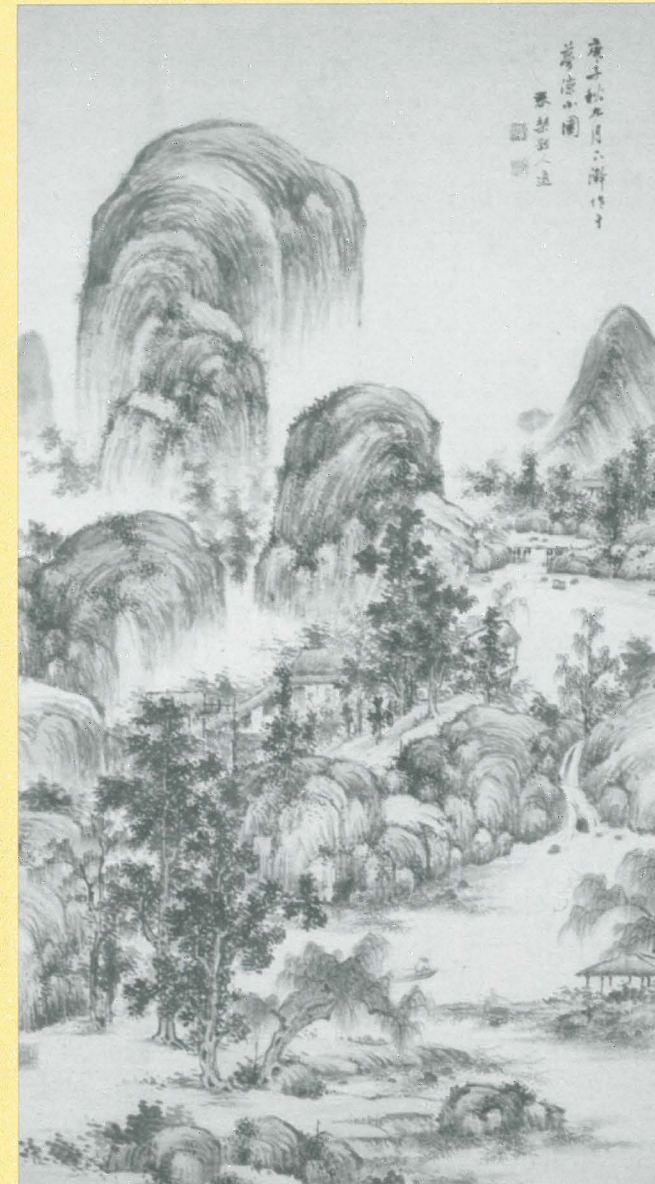
American, 1830–1902

*Puget Sound on the Pacific Coast*, 1870

Oil on canvas

52 1/2 x 82 in.

Gift of the Friends of American Art at the Seattle Art Museum with additional funds from the General Acquisition Fund, 2000.70



Uragami Shunkin, Japanese, 1779–1846, **Landscape**, 1840, hanging scroll, ink and color on paper, 68 x 38 in., Gift of Terry Welch in memory of Richard Washburn Welch, 2000.159, photo: Paul Macapia

### Constantin Brancusi

French, born Romania, 1876–1957

*Bird in Space*, 1926

Bronze, with wood and marble base  
h. 115 1/4 in.

Anonymous partial and promised gift, 2000.221

### Alexander Calder

American, 1898–1976

*Eagle*, 1971

Painted steel

38 ft. 9 in. x 30 ft. 30 in. x 30 ft. 30 in.

Gift of Jon and Mary Shirley, 2000.69

### Colleen Chartier & Wilkins & Peterson design firm, Seattle

American, b. 1952

*Symposium poster*, 1979

Design by print

21 x 21 in.

Gift of Colleen Chartier, SC2000.69

### Colleen Chartier

American, b. 1952

Purchased with funds from the exhibition *Earthworks Revisited*,

June 1999, 2000.106–.108

1. *Morris Site*, 1999

Color photograph  
16 x 20 in.

2. *Bayer Site*, 1999

Color photograph  
16 x 20 in.

3. *Bayer Site*, 1999

Color photograph  
16 x 20 in.

### Chuck Close

American, b. 1940

1. *Phil Tapestry*

(*Black Letter*), 1991  
Silk

49 x 37 in.

Edition of 50 and  
10 A.P.

Gift of Chuck Close  
in honor of Trevor

Fairbrother, 2001.28

2. *Phil Spit Bite*, 1995

Spit bite etching  
28 x 20 in.

Artist Proof 6/10 in an  
edition of 60 and 10 A.P.

Gift of Chuck Close

in honor of Trevor

Fairbrother, 2001.29

3. *Self Portrait*, 2000

120 color silkscreen  
65 1/2 x 54 1/8 in.

Seattle proof

Gift of Chuck Close

in honor of Jon and

Mary Shirley, 2001.30

### Ken Cory

American, 1943–1994

Gift of Beverly Cory, 2000.100–.102

1. *Untitled* (Striped pot),  
1966

Ceramic

5 1/4 x 5 x 11 in.

2. *Untitled* (Faucet pot), 1966

Ceramic with brass handle  
4 x 6 x 11 in.

3. *Untitled* (Reflector pot), 1966

Ceramic with plastic

8 1/2 x 6 x 5 in.

### Karen DeWinter

American, b. 1947

*No Invitation to the Party*, 2000

Acrylic on glass and board  
48 x 36 in.

Mark Tobey Estate Fund, 2000.110

### Marcel Duchamp

French, 1887–1968

*Self-Portrait in Profile*, 1959

Serigraph in blue ink on  
black paper

25 9/16 x 9 11/16 in.

Gift of Robert Shapazian, 2000.163

### The Garo Studio, Boston

*Dorothy Snyder*, ca. 1910

Platinum print

17 x 14 in.

Gift of Drs. Joseph and Elaine  
Monsen in honor of Trevor

Fairbrother, 2001.27

### Alberto Giacometti

Swiss, 1901–1966

*The Dog*, 1951

Bronze, edition 7 of 8  
18 1/8 x 38 1/4 x 6 in.

Anonymous partial and promised  
gift, 2000.220

### Robert Gober

American, b. 1954

Lithographs

Purchased in honor of Mr. and Mrs.  
Bagley Wright with funds from

Agnes Gund and Daniel Shapiro  
and the General Acquisition Fund,

2000.111–.113

1. *Untitled* (hand drain), 2000

Edition 5 of 47

30 x 44 1/4 in.

2. *Untitled* (window), 2000

Edition 5 of 50

30 x 43 1/2 in.

3. *Untitled* (dictionary), 2000

Edition 5 of 50

38 x 46 1/2 in.

**Paul Horiuchi**

American, 1906–1999  
 Provenance: artist to donor  
 Gift of Mr. and Mrs. Cyril A. Spinola, 2001.9

1. Sculpture  
*Compatibility*, early 1950s  
 Steel  
 h. 44 3/4 in. base  
 d. 7 in.
2. Works on paper, drawing  
*Study*, 1953  
 Pastel on paper  
 36 3/4 x 20 1/2 in.

**Charles Krafft**

American, b. 1947  
 Howard Kottler Testamentary Trust, 2000.115–.116

1. *Trompe L'oeil Thompson Machine Gun* from the *Porcelain War Museum Project*  
 Ceramic and paint  
 9 x 31 x 1 1/2 in.
2. *Delft Thompson Machine Gun*, from the *Porcelain War Museum Project*  
 Ceramic and paint  
 9 x 30 1/2 x 1 1/2 in.

**Lisa Liedgren**

Swedish, b. 1966  
*Self portrait, June 4/66–July 21/74*, 1999  
 Oil on canvas  
 54 x 75 1/2 x 2 in.  
 Gift of SAM's Avant-garde, 2001.11

**Whitfield Lovell**

American, b. 1959  
*Walkin' Blues*, 2000  
 Charcoal on wood, found objects  
 86 x 81 x 36 in.  
 1999 Maryatt Gala Fund, 2000.217

**Peter Millett**

American, b. 1949  
*Half Moon*, 1999  
 Metal  
 6 x 13 x 9 in.  
 Gift of Peter Millett and Greg Kucera Gallery, 2000.162

**Robert Motherwell**

American, 1915–1991  
*La Mer (bien)*, 1977  
 Acrylic on canvas board  
 30 x 24 in.  
 Gift of Neuberger Berman, 2000.117

**Georgia O'Keeffe**

American, 1887–1986  
*Music—Pink and Blue No. 1*, 1918  
 Oil on canvas  
 35 x 29 in.  
 Partial and promised gift of Mr. and Mrs. Barney A. Ebsworth, 2000.161

**Catherine Opie**

American, b. 1961  
*Untitled, Divinity*, 2000  
 Polaroid  
 103 x 43 in.  
 Gift of the Collectors' Forum, 2000.114

**Ed Ruscha**

American, b. 1937  
*Beverly at Western, Normandie and Vermont*, 1999  
 Acrylic on paper  
 30 x 40 in.  
 Gift of Gagosian Gallery, 2000.222

**Ed Ruscha**

American, b. 1937  
 13 books:  
*Twenty-six Gasoline Stations*, 1962  
*Various Small Fires*, 1964  
*Some Los Angeles Apartments*, 1965  
*The Sunset Strip*, 1966  
*Thirty-four Parking Lots*, 1967  
*Royal Road Test*, 1967  
*Business Cards*, 1968  
*Nine Swimming Pools*, 1968  
*Crackers*, 1969  
*Real Estate Opportunities*, 1970  
*A Few Palm Trees*, 1971  
*Records*, 1971  
*Colored People*, 1972  
 Gift of Robert Dootson, SC2000.70–.82

**John Singer Sargent**

American, 1856–1925  
*Léon Delafosse*, ca. 1893  
 Oil on canvas  
 39 1/2 x 23 3/8 in.  
 Given in honor of Trevor Fairbrother by Mr. and Mrs. Prentice Bloedel by exchange, and by Robert M. Arnold, Tom and Ann Barwick, Frank Bayley, Jeffrey and Susan Brotman, Contemporary Art Council, Council of American Art, Jane and David R. Davis, Decorative Arts and Paintings Council, Robert B. Dootson, Mr. and Mrs. Barney A. Ebsworth, P. Raaze Garrison, Lyn and Gerald Grinstein, Helen and Max Gurvich, Marshall Hatch, John and Ann Hauberg, Richard and Betty Hedreen, Mary Ann and Henry James, Mrs. Janet W. Ketcham, Allan and Mary Kollar, Greg Kucera and Larry Yocom, Rufus and Pat Lumry, Byron R. Meyer, Ruth J. Nutt, Scotty Ray, Gladys and Sam Rubinstein, Mr. and Mrs. Allen Vance Salsbury, Herman and Faye Sarkowsky, Mr. and Mrs. Douglas Scheumann, Seattle Art Museum Supporters, Jon and Mary Shirley, Joan and Harry Stonecipher, Dean and Mary Thornton, Bill and Ruth True, Volunteer Association, Ms. Susan Winokur and Mr. Paul Leach, The Virginia Wright Fund, Charlie and Barbara Wright, Howard Wright and Kate Janeway, Merrill Wright, and Mrs. T. Evans Wyckoff, 2001.17

**Jay Steensma**

American, 1941–1994  
*Untitled (Seascape)*, 1990  
 Oil and turpentine on canvas  
 56 x 95 in.  
 Partial and promised gift of Dan Eskenazi, 2000.103

**Nicola Vruwinck**

American, b. 1969  
*Sense of the Day*, 2000  
 Video installation  
 Gift of SAM's Avant-garde, 2001.12

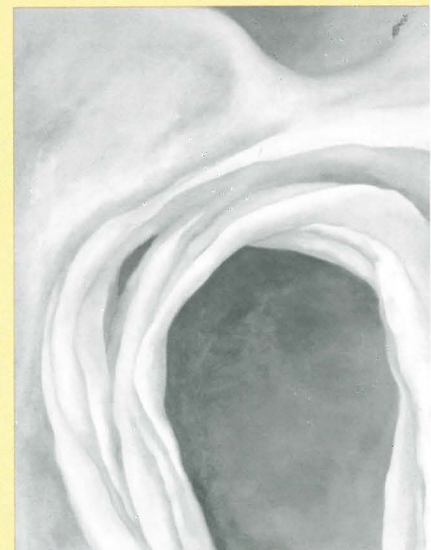
**Andy Warhol**

American, 1928–1987  
*Joseph Beuys*, 1980–83  
 Screenprint with rayon flocking on paper  
 Edition of 150  
 40 x 32 in.  
 Purchased in honor of Trevor Fairbrother with the Margaret E. Fuller Fund and Prints Purchase Fund, 2001.18

**James W. Washington, Jr.**

American, ca. 1911–2000  
 Mark Tobey Estate, 2000.104–.105

1. *Bird*, date unknown  
 Stone  
 2 x 1 1/2 x 1 1/4 in.
2. *Head*, 1960  
 Stone  
 2 3/4 x 1 7/8 x 1 7/8 in.



Georgia O'Keeffe, American, 1887–1986, *Music—Pink and Blue No. 1*, 1918, oil on canvas, 35 x 29 in., Partial and promised gift of Mr. and Mrs. Barney A. Ebsworth, 2000.161

John Singer Sargent  
 American, 1856–1925  
**Léon Delafosse**, ca. 1893  
 Oil on canvas  
 39 1/2 x 23 3/8 in.  
 Given in honor of Trevor Fairbrother by Mr. and Mrs. Prentice Bloedel by exchange, and by Robert M. Arnold, Tom and Ann Barwick, Frank Bayley, Jeffrey and Susan Brotman, Contemporary Art Council, Council of American Art, Jane and David R. Davis, Decorative Arts and Paintings Council, Robert B. Dootson, Mr. and Mrs. Barney A. Ebsworth, P. Raaze Garrison, Lyn and Gerald Grinstein, Helen and Max Gurvich, Marshall Hatch, John and Ann Hauberg, Richard and Betty Hedreen, Mary Ann and Henry James, Mrs. Janet W. Ketcham, Allan and Mary Kollar, Greg Kucera and Larry Yocom, Rufus and Pat Lumry, Byron R. Meyer, Ruth J. Nutt, Scotty Ray, Gladys and Sam Rubinstein, Mr. and Mrs. Allen Vance Salsbury, Herman and Faye Sarkowsky, Mr. and Mrs. Douglas Scheumann, Seattle Art Museum Supporters, Jon and Mary Shirley, Joan and Harry Stonecipher, Dean and Mary Thornton, Bill and Ruth True, Volunteer Association, Ms. Susan Winokur and Mr. Paul Leach, The Virginia Wright Fund, Charlie and Barbara Wright, Howard Wright and Kate Janeway, Merrill Wright, and Mrs. T. Evans Wyckoff, 2001.17, photo: Paul Macapia

## ART OF JAPAN AND KOREA

### Odake Chikuha

Japanese, 1878–1936  
*Boat Scene*, ca. 1915–20  
 Taisho period (1912–1926)  
 Pair of six-fold screens; color on paper  
 67 1/2 x 150 in. each  
 Gift of Carol and Dan Henderson, 2001.25.1–2

### Nukina Kaioku

Japanese, 1778–1863  
*Calligraphy*, ca. 1855–60  
 Hanging scroll; ink on paper  
 85 x 30 in.  
 Gift of Mimi and Bill Gates in memory of Daniel Henderson, 2001.23

### Sakaki Hyakusen

Japanese, 1697–1752  
*Bamboo in Wind*, early 18th century  
 Edo period (1615–1868)  
 Hanging scroll; ink on paper  
 53 1/2 x 22 in.  
 Gift in memory of Dan Fenno Henderson, 2001.24

### Kikuchi Keigetsu

Japanese, 1877–1955  
*Iris*, late 1910s  
 Taisho period  
 Hanging scroll; color on silk  
 58 3/4 x 20 1/2 in.  
 General Acquisition Fund and Asian Purchase Fund, 2001.15

### Kuniaki

Japanese, fl. mid-19th century  
*Three Kabuki Actors*, ca. 1860–70  
 Edo period (1615–1868)  
 Ukiyoe woodblock print  
 Triptych; ink and color on paper  
 14 x 9 1/2 in. image, sight  
 Gift of Mary Robinson, 2001.20.1–3

### Kunisada II

Japanese, 1823–1880  
*Yatsuhashi*, ca. 1860–70  
 Edo period (1615–1868)  
 Ukiyoe woodblock print  
 Triptych; ink and color on paper

14 x 9 1/2 in. image, sight  
 Gift of Mary Robinson, 2001.21.1–3

### Suzuki Masaya

Japanese, b. 1932  
*The Roar of the Sea*, 1998  
 Heisei period  
 Lidded box; acrylic, lacquer, mother-of-pearl  
 11 3/4 x 15 3/4 x 15 3/4 in.  
 Gift of Suzuki Masaya and Kagedo Japanese Art, 2001.26

### Mokuan

Japanese, b. China  
 1611–1684  
*Five-character calligraphy: "Flowers blooming on a budless branch,"* late 17th century  
 Edo period (1615–1868)  
 Hanging scroll; ink on paper  
 55 2/1 x 15 in.  
 General Acquisition Fund, 2001.16

### Uragami Shunkin

Japanese, 1779–1846  
*Landscape*, 1840  
 Hanging scroll; ink and color on paper  
 68 x 38 in.  
 Gift of Terry Welch in memory of Richard Washburn Welch, 2000.159

### Tomiooka Tessai

Japanese, 1836–1924  
*The scene of the Ainu life*, ca. 1890–1920  
 Late Meiji period  
 Hanging scroll; ink and color on paper  
 9 3/8 x 12 in.  
 Gift of Bill Lahr and the estate of Dorothy Lahr, 2001.1

### Baby bath towel (yuage)

Japan, late 19th–early 20th century  
 Meiji period  
 Cotton, design in *tsutsugaki* (rice-paste resist), dip-dyed in indigo and safflower (or madder)  
 26 x 36 1/2 in.  
 Purchased gift in memory of

Dorothy Joice from friends and family, 2001.13

### Friends of Children (Unai no tomo)

Japan, 1911–13  
 Late Meiji and early Taisho period  
 Set of six books, printed using the wood-block print technique  
 10 x 7 in. each  
 Edited by Shimizu Seifu  
 Published by Unsodo, Kyoto  
 Gift of Bill Lahr and the estate of Dorothy Lahr, 2001.2

### Medicine Buddha (Yakushi Nyorai or Bhaisajyaguru)

Japan, 18th century  
 Edo period (1615–1868)  
 Wood  
 h. 16 in.  
 Gift of Margaret Prosser Allen, 2001.22

### Plate

Japan, ca. 1720–30  
 Edo period (1615–1868)  
 Imari ware, Kakiemon style  
 Foliate rim and design of wagtail perched on bamboo above rocks and blossoming shrubs  
 Porcelain  
 d. 7 1/4 in.  
 Gift of Audrey L. Kerry, 2001.19

### Ranma

Japan, late 19th century  
 Meiji period  
 Carved wood with lacquered wood frame; bone inlay  
 With frame (3a and c): 16 1/2 x 68 3/4 in.; w/frame (3b): 16 1/2 x 77 3/4 in.  
 Gift of Bill Lahr and the estate of Dorothy Lahr, 2001.4.1–3

### Sash for carrying an infant (kooi)

Japan, late 19th–early 20th century  
 Meiji period  
 Cotton, design in *tsutsugaki* (rice-paste resist), dip-dyed in indigo

155 x 13 1/2 in.  
 Purchased gift in memory of Dorothy Joice from friends and family, 2001.14

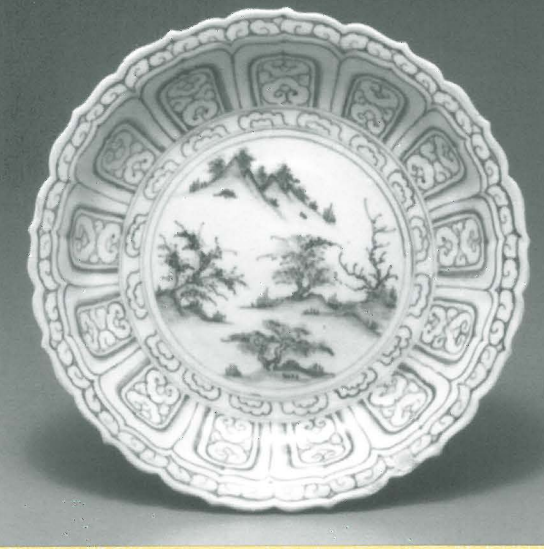
### Writing box

Japan, early 20th century  
 Late Meiji or early Taisho period  
 Wood with mother-of-pearl and lead inlay, and gold and silver lacquer decoration  
 2 x 8 1/4 x 1 3/4 in.  
 Gift of Bill Lahr and the estate of Dorothy Lahr, 2001.3



Kikuchi Keigetsu, Japanese, 1877–1955, *Iris*, late 1910s, Taisho period, hanging scroll; color on silk, 58 3/4 x 20 1/2 in., General Acquisition Fund and Asian Purchase Fund, 2001.15, photo: Paul Macapia

Blue and white landscape decorated barbed rim dish, Vietnam, Hoi An shipwreck, ca. late 15th–early 16th century, Ceramic, 13 1/4 in. diameter, Purchased with funds from Mary and Cheney Cowles, the Margaret E. Fuller Fund, and the 1999 Maryatt Gala fund, 2000.118–123, photo: Howard Giske



## ART OF CHINA AND SOUTHEAST ASIA

### Horse

China  
 Han dynasty (24–220 A.D.)  
 Terracotta  
 50 x 46 x 13 1/2 in.  
 Gift of Iver M. Nelson, Jr., 2000.154

Vietnam, Hoi An shipwreck, ca. late 15th–early 16th century  
 Ceramic  
 Purchased with funds from Mary and Cheney Cowles, the Margaret E. Fuller Fund, and the 1999 Maryatt Gala Fund, 2000.118–123

1. *Blue and white landscape decorated barbed rim dish*  
 13 1/4 in. diameter
2. *Five blue and white molded parrot bowls*  
 Each approx. 3 1/2 in. wide

## ART OF AFRICA AND OCEANIA

### Rosie Nangala Fleming

Australian Aboriginal (Alice Springs), b. ca. 1930  
*Three Dreamings*, 1993  
 Acrylic on linen  
 46 7/16 x 71 1/4 in.  
 Gift of Margaret Levi and Robert Kaplan, 2000.156

### Emily Kame Ngwarreye

Australian Aboriginal (Utopia Station, Northern Territory), 1910–1996  
*Wild Yam Dreaming*, 1995  
 Acrylic on linen  
 59 13/16 x 48 1/16 in.  
 Gift of Margaret Levi and Robert Kaplan, 2000.157

### Wolpa Wanambi

Australian Aboriginal (Yirrkala Dhanu, Northern Territory), b. ca. 1970  
*Marrakulu at the Guyder River*, 1997  
 Natural pigments on eucalyptus bark  
 92 1/2 x 37 in.  
 Gift of Margaret Levi and Robert Kaplan, 2000.158

*Five Egungun Beings from Beyond Nigeria, Yoruba, Osun State, Erin Osun*, 2001  
 Made, performed, and documented by *Ayan Agalu* (May the God of Drumming carry you aloft)  
 Cloth construction, video documentation  
 General Acquisition Fund, T2001.61

### Scepter

Africa, 20th century  
 Ivory  
 l. 28 1/2 in.  
 Gift of Dr. Oliver and Pamela Cobb, 2000.219

## DECORATIVE ARTS

### Fance Franck

American, active in France, born early–mid 20th century  
*Oval scalloped vase*, 1999  
 Porcelain with black glaze  
 7 3/4 x 7 1/4 x 5 in.  
 Gift of Sue and Bernie Pucker, and Fance Franck, presented in honor of Dr. Henry Trubner, 2001.32

### Gertrud and Otto Natzler

American, born Austria, 1908–1971 and b. 1908  

1. *Cylindrical Vase with Indented Lip*, 1961  
 Ceramic  
 5 1/4 x 2 3/4 x 2 3/4 in.  
 Gift of Mr. and Mrs. William A. Small, Jr., 2000.98
2. *Bowl*, 1961  
 Ceramic  
 2 1/2 x 4 3/4 in.  
 Gift of Mr. and Mrs. William A. Small, Jr., 2000.99

3. *Bowl (cylindrical)*, ca. 1940–50  
 Red earthenware with matte green glaze  
 Gift of Bill Lahr and the estate of Dorothy Lahr, 2001.5
4. *Bowl (funnel-shaped)*, ca. 1940–50  
 Red earthenware with chartreuse glaze  
 Gift of Bill Lahr and the estate of Dorothy Lahr, 2001.6
5. *Bowl (small)*, ca. 1940–50  
 Red earthenware with chartreuse glaze  
 Gift of Bill Lahr and the estate of Dorothy Lahr, 2001.7

### Chest over drawers

ca. 1750–1790  
 United States, New England  
 Pine and chestnut wood  
 43 1/2 x 38 1/4 x 18 3/8 in.  
 Gift of Mimi and Bill Gates in honor of John Kirk and Trevor Fairbrother, 2000.160

### Display plate

Germany, Augsburg, ca. 1680–95  
 Workshop of Adolf (Adolph) Gaap, died 1695  
 Gilded silver  
 12 x 13 3/4 in.  
 Gift of Emil Vernei, 2001.31

### Room interior and ceiling

ca. 1575–1600  
 Italy  
 Wood and leaded glass  
 Approx. 10 1/2 x 13 1/2 in. x 16 ft.  
 Gift of Richard Louis Brown in memory of John Yeon, 2000.218

### Vase

Sweden, Tobo Stengodsverkstad, ca. 1950s  
 Ingrid and Erich Triller  
 Swedish, b. 1905, and 1898–1972  
 Stoneware with brown glaze  
 Gift of Bill Lahr and the estate of Dorothy Lahr, 2001.8

The Seattle Art Museum thanks donor of additional fractional interest on works of art:  
 Mr. Edward L. Cushman

The Seattle Art Museum thanks donors of gifts made in support of the collection:  
 Yasuko Terada  
 Mary and Elliotte Little



Fance Franck, American, active in France, born early–mid 20th century, *Oval scalloped vase*, 1999, porcelain with black glaze, 7 3/4 x 7 1/4 x 5 in., Gift of Sue and Bernie Pucker, and Fance Franck, presented in honor of Dr. Henry Trubner, 2001.32, photo: Paul Macapia



## EDUCATION

### ADULT PROGRAMS

SAM offered five symposia this year in conjunction with special exhibitions, *Sheer Realities: Clothing and Power in Nineteenth-Century Philippines*, *Multiple Pathways to American Modernism*, *SEWN Together: A Forum for Considering the Newest and Oldest in Artistic Traditions*, *Writing Culture: A Symposium on Chinese Calligraphy*, and *Treasures from a Lost Civilization: Ancient Chinese Art from Sichuan*. Lecture series were also among the many high-quality programs offered relating to exhibitions and the permanent collection—these included a series on three American artists, Japanese art, and the *John Singer Sargent* exhibition.

### COMMUNITY PARTNERSHIPS

This year the museum continued to build relationships in the community by partnering with 32 community organizations to present 57 programs and related events in conjunction with *John Singer Sargent* and *Treasures from a Lost Civilization: Ancient Chinese Art from Sichuan*.

### FAMILY PROGRAMS

Learning galleries developed for *John Singer Sargent* and *Treasures from a Lost Civilization: Ancient Chinese Art from Sichuan* drew thousands of visitors who tried their hand at figure drawing in The Painter's Studio and immersed themselves in the Sanxingdui archaeological site in the virtual-reality dig.

### FILMS

Highlights from the film program included a tribute to actor Alec Guinness and a series of films from India, France, Iran, and Ireland.

### NEW MEDIA

Interactive multimedia computer programs were created for *Treasures from a Lost Civilization: Ancient Chinese Art from Sichuan*. They included written text, voice, music, QuickTime movies, games, and puzzles for learning about the objects in this exhibition. This interactive program will travel to the Kimbell Museum in Fort Worth, Texas.

### RENTAL/SALES GALLERY

The Rental/Sales Gallery had a successful year, with 227 sales, a record-setting 1,790 rentals, 4 major shows, and 3 rotating shows in the Focus Gallery.

### SEATTLE ASIAN ART MUSEUM PROGRAMS

The Year of China began at SAAM with the opening of *The Embodied Image: Chinese Calligraphy from the John B. Elliott Collection*, with the participation of the Year of China community advisory committee. Popular Chinese calligraphy demonstrations were held each Saturday, followed by lively tours given by members of the new group of 18 bilingual Chinese art tour guides.

### SCHOOL AND TEACHER PROGRAMS

As part of our continuing efforts to collaborate with educators to develop dynamic programs for students and teachers, we have drawn together 50 educators from around Washington to participate in our Educators Advisory Committee. The EAC meets bimonthly during the school year to discuss SAM school and teacher programs and resources.

School and teacher programs at the Seattle Art Museum are made possible by a

challenge grant from the National Endowment for the Humanities and by contributions from the Century Circle Endowment, the Patrice and Kevin Auld Education Endowment, the Vicki and Tom Griffin Education Endowment, the William Randolph Hearst Endowed Fund for Education Programs, the C. Calvert Knudsen Education Endowment, the Bonnie and Gaither Kodis Education Endowment, the Barbara and Michael Malone Education Endowment, the Seattle Art Museum Supporters (SAMS) Education Endowment, the Volunteer Association/Rental Sales Gallery Education Endowment, the Richard Weisman Education Endowment, the Ann P. Wyckoff Education Endowment, contributors to the Annual Fund, and operating support from the Washington State Arts Commission.

### TOURS

Our docent volunteers conducted 930 public tours serving 17,023 adult and family visitors and 439 school tours that included either an art studio or learning gallery activity for 13,720 students. In addition, 12,945 students participated in self-guided tours.

### VOLUNTEERS

Led by Volunteer Association Chair Sally McDonough, 675 talented volunteers on 14 committees contributed approximately 30,000 work hours to the museum.

### WYCKOFF TEACHER RESOURCE CENTER

The Ann P. Wyckoff Teacher Resource Center continues to broaden its outreach efforts and now serves 134 school districts; overall borrowers increased 50 percent over the past year, impacting more than 232,000 students. Outreach suitcases reached 278 educators and more than 15,000 students.

## FISCAL YEAR 2001 PROGRAM STATISTICS

	Total Number	Attendance	
<b>Adult Programs</b>	<b>1,139</b>	<b>49,528</b>	
Adult Guided Tours	930	17,023	
Community Partner Programs	2	1,200	
Council Programs	38	3,385	
Film Series	29	19,568	
First Friday Lectures	9	1,251	
Gallery Talks	12	219	
Guild Programs	17	515	
Lectures	13	1,262	
Lecture Series	3	1,246	
Performances/Demonstrations	40	2,984	
Symposia	4	466	
Workshops/Discussion Groups	5	102	
Tea Ceremony Demonstrations	18	307	
<b>Youth &amp; Family Programs</b>	<b>69</b>	<b>40,717</b>	
Art Camps	7	173	
Art Studio Classes	4	43	
Family Festivals and Workshops	43	9,204	
Learning Galleries	2	24,725	
Family Guides	2	6,200	
Family Activities (Saturday Stories)	11	372	
<b>School Tours &amp; Activities</b>	<b>1,419</b>	<b>43,638</b>	
Guided Tours	439	13,720	
Self-guided Tours	433	12,945	
Art Stars Tours	7	159	
Art Studio Sessions	187	6,164	
African Performance	26	940	
Tea Ceremony	6	155	
Sargent Learning Gallery	150	4,386	
Sichuan Learning Gallery	171	5,169	
<b>Teacher Programs</b>	<b>32</b>	<b>3,471</b>	
Workshops	3	77	
TRC Open Houses	2	191	
Teacher Evenings	3	858	
Outreach Events	24	2,345	
		Students Impacted	
<b>Teacher Resource Center</b>	<b>4,112</b>	<b>436,860</b>	
Registered Borrowers	2,009	232,370	
Curriculum Resource Units Sold	143	16,204	
Curriculum Resource Units Given	417	15,421	
Suitcases Loaned	278	27,372	
TRC Materials Loaned	1,265	145,493	
<b>Libraries</b>	<b>724</b> volumes added,	<b>21,154</b> total	
	Exhibits	Sales	Rentals
<b>Rental/Sales Gallery</b>	<b>7</b>	<b>227</b>	<b>1,790</b>
<b>Total audience reached</b>			<b>574,214</b>

## VOLUNTEER ASSOCIATION OFFICERS AND EXECUTIVE COMMITTEE

**OFFICERS**  
Sally McDonough, Chair  
Mary Rae Mattix, Vice Chair  
Ayesha Khan, Secretary  
Ray Cole, Treasurer

### EXECUTIVE COMMITTEE

Theresa Barker  
Walter Beaumont  
Marilyn Burns  
Tessa Chilton  
Marilyn Clarke  
Marilyn Eldrenkamp  
Sally Hirst  
Shirley Loper  
Joan Larson  
Virginia Level  
Faye Lovvorn  
Joe Pepia  
Evelyn Reingold  
Eileen Ronsheim  
Carole Shankland  
Winifred Stratton  
Jean Warner

### VOLUNTEER AWARDS

Shirley Loper, Dorothy C. Malone Award

### HONOREES

Volunteer Association: Mary Rae Mattix  
Docents: Eugenia Smith  
Development and Leadership: Scott and Abbie Morris  
Rental/Sales Gallery: Eiko Shima  
SAMS: Shirley Miner  
Avant-garde: Brian Kutzera  
Ikebana International: Ellen Widmayer  
Richard Fuller Guild: Ann Blakenship  
Southwest Guild: Carole Shankland  
Asian Art Council: John Pehrson  
Contemporary Art Council: John Boylan  
Council of American Art: Mary Kollar  
Decorative Arts and Paintings Council: David Reed Weatherford  
Native Art of the Americas and Oceania Council: Robert Weisenbach  
Pacific Northwest Art Council: Lynn Hughes  
Photography Council: Adrien Hefta-Gaub  
Admissions Department: Mary Sims  
Art Studio: Eileen Ronsheim  
Curatorial/Asian Art: Jane Green  
Curatorial/Decorative Arts: Tony Lickeig  
Curatorial/Modern Art: Susan Winokur  
Development/Administration: Katherine Dynes  
Development/Special Events: Suzie Thorness  
Director's Division: Dorothy Bean  
Education: Cynthia Mejia Giudici  
Membership Department: Barbara Walton  
Photo Archives: Anne Rutledge  
Teacher Resource Center: Anne Lipner  
Volunteer Office/Human Resources: Norine Anderson

## ART COUNCILS

**ASIAN ART COUNCIL**  
Shirley Younglove, President  
Michael Jacobson, Vice President  
Joan Christofferson, Treasurer  
John Pehrson, Secretary

### COUNCIL OF AMERICAN ART

Ann Barwick, President  
Mary Kollar, Vice President  
Michael Hill, Treasurer  
Jean Koskie, Secretary

### CONTEMPORARY ART COUNCIL

Billy Howard, President  
Susan Zoccola, Vice President  
Judith Kindler, Treasurer  
Jeffrey Simmons, Secretary

### DECORATIVE ARTS AND PAINTINGS COUNCIL

Ruth Eller, President  
Elizabeth Rummage, Vice President  
John Stevens, Treasurer  
Judith Miller, Secretary

### NATIVE ART OF THE AMERICAS AND OCEANIA COUNCIL

Paul Ritner, President  
Paula Tharp, Vice President  
Gloria Lobb, Treasurer  
Anna Strankman, Secretary

### PHOTOGRAPHY COUNCIL

Christine Burgoyne, President  
Tom Fehr, Vice President  
Earl Olsen, Treasurer  
Jan Bogle, Secretary

### PACIFIC NORTHWEST ART COUNCIL

Lynn Hughes, President  
Chris Gibbs, Treasurer  
Jill Hearne, Secretary

### AFRICAN ART COUNCIL

Paul Toliver, President







Event speakers Paul Schell, Mimi Gardner Gates, Jon Shirley, and Susan Brotman with trustee Jeff Brotman along with Tahoma the bald eagle and her handler at the Calder event. Photo: Karen Durby/Durby Photography



Marion Weiss and Michael Manfredi  
Photo courtesy of Seattle Daily Journal of Commerce

## OLYMPIC SCULPTURE PARK

- SAM announced the selection of New York-based Weiss/Manfredi Architects as the lead designers for the Olympic Sculpture Park.
- Through a public/private partnership, including funds contributed by King County and the City of Seattle, the final parcel of land for the Olympic Sculpture Park was purchased.
- SAM was awarded a \$1 million Building for the Arts grant from the Washington State legislature for the development of the Olympic Sculpture Park.
- King County Arts Commission announced \$400,000 in funding

for the Olympic Sculpture Park through its Cultural Facilities Program.

- Alexander Calder's *Eagle* was installed at Volunteer Park.

### OLYMPIC SCULPTURE PARK NEW DONORS

July 1, 2000–June 30, 2001

Molly Aasten  
Gilbert and Mary Jane Anderson  
Jeff and Susan Brotman  
Bette-Jo Buhler  
Esther Chrisman  
James and Barbee Crutcher  
David J. Cornfield and Linda Archer  
Jane Cowles and Ann Stephens  
Diamond Parking  
Eastside Journal and South County Journal Charitable Funds  
Margery Friedlander  
Goldman Sachs & Co.  
Max and Helen Gurvich  
George and Patty Hall  
Theodore Hurwitz  
Legacy Partners/Equity Residential Trust  
Martin Selig Real Estate  
Martin Smith Real Estate

PONCHO  
Port of Seattle  
Doug and Kathie Raff  
Greg and Janis Riker  
Jon and Mary Shirley  
*The Seattle Times*  
Target Stores  
Unocal Corporation  
Virginia and Bagley Wright  
Ann P. Wyckoff

We would also like to extend our thanks to the following government officials and programs:  
US Department of Housing and Urban Development for a \$500,000 Economic Development Initiative grant

Washington State legislature for a \$1 million Building for the Arts grant

King County Executive Ron Sims and the King County Council for \$1 million in open space funding from King County and a \$400,000 appropriation from the King County Arts Commission Cultural Facilities Program

Seattle Mayor Paul Schell and the Seattle City Council for \$2 million from the Capital Improvement Program

## CENTURY ENDOWMENT CAMPAIGN

The Seattle Art Museum gratefully acknowledges the following donors who contributed to the success of this important campaign. This ongoing initiative secures the financial foundation for the museum to thrive in perpetuity.

### DISTINGUISHED BENEFACTORS GIFTS OF \$1 MILLION AND ABOVE

Dr. and Mrs. Ellsworth C. Alvord  
Mr. and Mrs. Jeffrey H. Brotman  
The Foster Foundation  
The Bill and Melinda Gates Foundation  
Mr. and Mrs. William H. Gates III  
Mr. and Mrs. Gerald Grinstein and the family of Jane M. Davis  
Mrs. Janet W. Ketcham  
The Kreielseimer Foundation  
The McCone Foundation  
The Andrew W. Mellon Foundation  
Mr. and Mrs. William H. Neukom  
Mrs. Illsley Ball Nordstrom\*  
Mrs. Roy Nutt  
Mrs. Guendolen Carkeek Plestcheeff\*  
Mr. and Mrs. Herman Sarkowsky  
The Estate of Mildred Sevener  
Mr. and Mrs. Jon Shirley  
Mrs. David E. Skinner  
Mr. and Mrs. Bagley Wright  
Mr.\* and Mrs. T. Evans Wyckoff

### BENEFACTORS GIFTS FROM \$500,000 TO \$999,999

The Bagley Wright Fund  
Barbara Hughes Carnahan in memory of Albert and Hermina Hambach  
Ms. Priscilla Collins  
Dr. and Mrs. David R. Davis  
Mr. and Mrs. Richard C. Hedreen  
The Estate of Dorothy C. Malone  
National Endowment for the Arts  
National Endowment for the Humanities  
Dr. Charles Simonyi  
Mr. and Mrs. Dean D. Thornton

### PATRONS GIFTS FROM \$250,000 TO \$499,999

Anonymous (1)  
Mrs. Albert O. Foster  
Mrs. Margery Friedlander  
Mr. William H. Gates  
Mr. and Mrs. Max Gurvich  
Mr. and Mrs. John H. Hauberg  
The Hearst Foundation  
Mr. and Mrs. Henry James  
Mrs. Nancy K. Ketcham  
The Estate of Priscilla Klepser  
Mrs. Leo T. Kreielseimer\*  
Mr. and Mrs. Michael Malone  
The Estate of Theiline Pigott McCone  
The R. D. Merrill Foundation  
Mr. and Mrs. Assen Nicolov  
The Norcliffe Foundation  
Mrs. Bette Sprague  
Mr. and Mrs. Harry C. Stonecipher  
The Estate of Catherine Zesbaugh

### SPONSORS GIFTS FROM \$100,000 TO \$249,999

Mr. and Mrs. Chap Alvord  
Mr. Robert M. Arnold  
Mr.\* and Mrs. Frederick Ayer  
Mr. and Mrs. Jack A. Benaroya  
The Estate of Alice Bringhurst  
Ms. Dorothy Stimson Bullitt\*  
Mr. and Mrs.\* Richard P. Cooley  
Patricia S. Denny  
Mr.\* and Mrs. Kenneth R. Fisher  
Mr. and Mrs. James C. Hawkanson  
Mr. and Mrs. Lynn P. Himmelman  
The Estate of Edith Anne Holmes and William K. Holmes  
Mr. C. Calvert Knudsen  
The Byron and Alice Lockwood Foundation  
Mary and George Coleman Martin in memory of Marian Coleman Martin  
The Estate of Peggy Locke Newman  
The Estate of Coralynn Pence  
The Seattle Art Museum Supporters  
The Estate of Phillip Soth  
Mr. and Mrs. Bill True  
Volunteers Association/Rental Sales Gallery  
Mr. Richard L. Weisman  
The Estate of Helen Yeakel

### DONORS GIFTS FROM \$50,000 TO \$99,999

Mr. and Mrs. Michael D. Alhadeff  
Mr. and Mrs. Morris J. Alhadeff\*  
The Joan and Morrie Alhadeff Family Fund  
Dr. and Mrs. Kevin M. Auld  
Mrs. Patricia Denny  
Mr.\* and Mrs. Bryant R. Dunn  
Mr. and Mrs. Barney A. Ebsworth  
The Estate of Arthur F. Ederer  
The Estate of Erna Erickson  
Dr. and Mrs. Thomas Griffin  
Mr. and Mrs. Hamilton R. Harris  
Ms. Laura Ingham  
Mr. and Mrs. Gaither M. Kodis  
The Estate of Howard Kottler  
The Estate of Elmer J. Nordstrom  
PONCHO  
The Urasenke Foundation  
Ms. Arlene A. Wright

### GIFTS FROM \$25,000 TO \$49,999

Anonymous (1)  
Mr. and Mrs. Don Abel  
Mr. and Mrs. James Allison  
Mr. and Mrs. Mark Anderson  
Mrs. Alison Andrews  
The Estate of Bernice S. Baker  
Mr. and Mrs. Stan Barer  
Ms. Carol Bobo  
Mr. and Mrs. C. Kent Carlson and Mrs. Jeanne Cadagan\*  
The Clowes Fund  
Dr. and Mrs. Oliver E. Cobb  
Mrs. Mimi Gardner Gates  
Mr. and Mrs. D. Wayne Gittinger  
The Estate of Boyer Gonzales  
Judy and Jeff Greenstein  
The Estate of Elizabeth Hansmann  
Helen\* and Marshall Hatch  
The Estate of James F. Hodges and Frances S. Hodges  
Mr. and Mrs. William P. Ingham

Mr. and Mrs. Jay Jones  
Mr. and Mrs. Charles Katz, Jr.  
Mr. and Mrs. Peter Kerr  
Mr. and Mrs. Richard Lea III  
Mr. and Mrs. Dan Levitan  
Mr. and Mrs. Greg Maffei  
Mr. and Mrs. David E. Maryatt  
Mr. and Mrs. Fred W. Maxwell  
Mr. and Mrs. Scott Morris  
Mr. and Mrs. Douglas E. Norberg  
Ms. Linda Nordstrom and Mr. Christian Siefert  
Olson Sundberg Kundig Allen Architects  
Mr. and Mrs. Everett P. Paup  
Ms. Molly Pengra  
Mrs. Jean Radford  
Mr. and Mrs. Brooks G. Ragen  
Mrs. William G. Reed\*  
Mr. and Mrs. Jonathan Roberts  
Dr. Kenneth M. Roberts  
Lee and Stuart Rolfe  
Mr. H. Stewart Ross  
Mr. and Mrs. Sam Rubinstein  
Mr. and Mrs. Stanley D. Savage  
Mr. and Mrs. Gian-Carlo Scanduzzi  
Mr. and Mrs. Thomas E. Schick  
Mr. and Mrs. Howard Schultz  
Mrs. Roberta Sherman  
The Estate of Ms. Edna C. Simon  
The Skinner Foundation  
Mr. and Mrs. Vinton H. Sommerville  
Mr. and Mrs. C. Jairus Stratton  
Mr. and Mrs. William K. Street  
Mr. and Mrs. Richard E. Stroble  
Mr. and Mrs. Robert Strong  
Mr. and Mrs. Bruce L. Titcomb  
Mr. John T. Toland  
Mrs. Josephine Utley  
Mr. and Mrs. William P. Vittoe  
Mr. and Mrs. Griffith Way  
The Estate of Marion G. Weinthal  
Mrs. Carol Wright  
Mr. and Mrs. Charles Wright  
Mr. H.S. Wright III and Ms. Katherine Ann Janeway

### GIFTS FROM \$5,000 TO \$9,999

Mrs. Frank W. Beatty, Jr.  
The Estate of Dorothy M. Black  
Prentice Bloedel\*  
The Estate of Sophie Caplan  
Ms. Robin D. Davis and Mr. Charles E. Corrigan  
Davis Wright Tremaine  
Mr. and Mrs. P. Cameron DeVore  
Ms. Joanna Eckstein\*  
The Estate of Margaret C. Follett  
Mrs. Joseph E. Gandy  
Ms. Catherine Hillenbrand and Mr. Joseph Hudson  
LLWW Foundation  
Mr. and Mrs. James Lockwood III  
Mr. Byron Meyer  
Mrs. Leila Russell  
Mr. and Mrs. George S. Schuchart  
The Seattle Art Museum's Contemporary Art Council  
Mr. William B. Staadecker\*

### GIFTS FROM \$10,000 TO \$24,999

Anonymous (1)  
Mr. and Mrs. Harry Applewhite  
Katherine Agen Baillargeon\*  
Mr. and Mrs. Thoms W. Barwick  
Mrs. John M. Baxter  
Mr. and Mrs. Paul Brainerd  
Mrs. Maxwell Carlson



Century Endowment Campaign leadership Virginia Wright, and Faye Sarkowsky, with Herman Sarkowsky



## FUNDRAISING EVENTS

Annually, exciting fundraising events contribute significantly to the museum's operating budget and support for the permanent collection. For 2000/2001 the following fundraising events raised a combined total of \$211,000.

### CHILDREN'S GALA November 5, 2000

The Seattle Art Museum opened its doors for its youngest art lovers at the 2000 Children's Gala. Centered around the exhibitions *Creating Perfection: Shaker Objects and Their Affinities* and *Twentieth-Century American Art: The Ebsworth Collection*, hundreds of young and young-at-heart guests celebrated SAM and the arts through interactive art activities, music, and entertainment. Christine Nicolov and Katy Titcomb co-chaired the third year of this event, making it a stellar success and raising more than \$17,000. Generous support for the Children's Gala provided by KeyBank.

### SAMS EVENTS NORDSTROM DESIGNER PREVIEW July 24, 2000

The 2000 Nordstrom Designer Preview entered the Big Top for the show of the season. Cirque du Soleil set the backdrop for this cocktail preview with the season's hottest fashions from American and European designer collections hitting the runway. With 1,000 guests attending the preview, the dynamic partnership of Nordstrom and SAMS raised an outstanding \$123,000! Nordstrom produces this event in partnership with the Seattle Art Museum Supporters (SAMS).

### GARDENS OF ART May 10, 2001

On a summer-like day in May, four beautiful gardens nestled in The Highlands delighted nearly 400 guests with a fabulous luncheon and garden and sculpture tours. This memorable day raised an unprecedented \$65,000. Gardens of Art was generously sponsored by Galleries of Neiman Marcus, Krekow Jennings, Sotheby's, Robert Leonard Day Spa, N. Peal Cashmere, Wells Fargo Bank, and Prudential Securities.

### SAMS EXECUTIVE COMMITTEE 2000-2001 OFFICERS

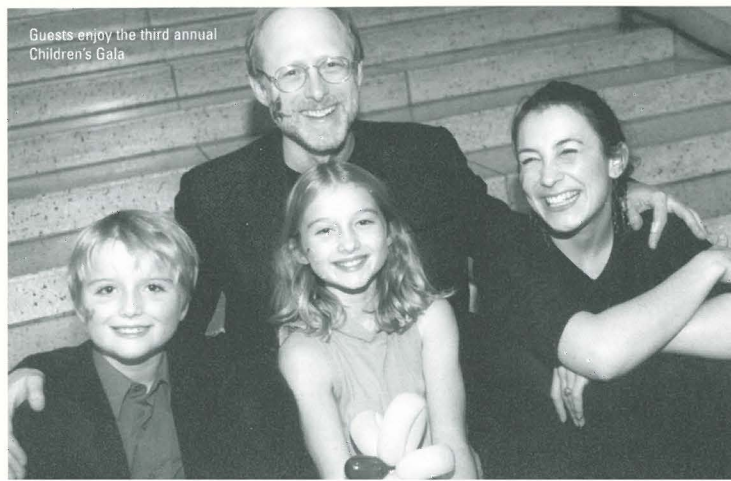
Sandy Carlson, President  
Heidi Duffy, VP Fundraising  
Kim Richter, VP Programming  
Lynn Mandel, Recording Secretary  
Anne Gores, Corresponding Secretary  
Nanci Richards, Treasurer  
Helene Heglund Reed, Nominating Committee Chair  
Sharon Huling, Chairman Emeritus

### COMMITTEE CHAIRS

P. Raaze Garrison, Board Liaison  
Fay Hauberg Page, Historian  
Irene McRory, Hospitality  
Karen Bartlett, Long Range Planning  
Shirley Miner, Mailing List  
Glyn Nordstrom, Membership  
Hope Stroble, Membership  
Colleen Taucher, Newsletter  
Karen Gail Chin Wong, Parliamentarian  
Tracy Sarich, Publicity

### FUNDRAISING CHAIRS

Ann Barwick, Gardens of Art  
Helene Heglund Reed, Gardens of Art  
Heidi Duffy, Nordstrom Designer Preview  
Kim Richter, Nordstrom Designer Preview



Guests enjoy the third annual Children's Gala



Winner of the 2000 Masquerade Ball Costume Contest

### AVANT-GARDE EVENT MASQUERADE BALL October 28, 2000

Once again the Masquerade Ball proved to be one of SAM's liveliest events. Proceeds raised from the 2000 Masquerade Ball were used for the purchase of a new acquisition for the museum's permanent collection. The ball raised almost \$10,000 and together with the museum's Assistant Curator of Modern Art, the Avant-garde Executive Committee selected two works by Northwest artists to be added to the collection.

Generous support for the Masquerade Ball provided by Huling Bros. and Davis Wright Tremaine.

### AVANT-GARDE OFFICERS

Dawn Torvik, Chair  
Brian Kutzera, Programming Co-Chair  
Daisy Frye, Programming Co-Chair  
Richard Mancino, Public Relations Chair  
Casey Cochran, Membership Chair  
Lora Marini Baker, Secretary  
Kraig Marini Baker, Treasurer

## FINANCIAL REPORT

July 1, 2000—June 30, 2001

This year the museum organized three impressive exhibitions with collaborative programming: *Creating Perfection: Shaker Objects and Their Affinities*, *John Singer Sargent*, and *Treasures from a Lost Civilization: Ancient Chinese Art from Sichuan*.

Operating support totaled \$33,737,412, which included \$14,947,607 in funding from individuals and foundations that enabled the museum to acquire significant works including the monumental stabile *Eagle* by Alexander Calder and the painting *Puget Sound on the Pacific Coast* by Albert Bierstadt. Investment income provided \$3.5 million in operating support. Individuals continue to provide the largest segment (64 percent) of operating support to the museum through admissions, membership, gifts, and purchases. Corporations provided 7 percent, foundations 10 percent, and government 2 percent of the museum's operating revenue.

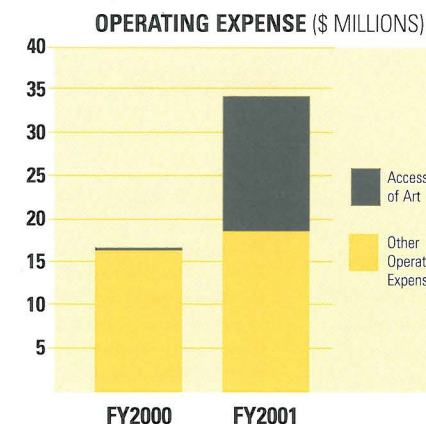
Operating expense totaled \$33,723,971, resulting in a surplus of \$13,441. Facility and security expense was \$2.3 million, exhibition and collection care \$3.9 million, education \$2.2 million, and store and café \$1.2 million. Expenses incurred for the future Olympic Sculpture Park amounted to \$.9 million.

Support expense included development costs (fundraising and membership programs) \$2.4 million, administrative expense \$2.5 million, and depreciation \$.6 million.

Temporarily restricted net assets decreased by \$8 million to \$32,021,628. This decrease is primarily due to the expenditure of funds received from donors in the prior year to support art acquisition.

Permanently restricted net assets decreased in value as a result of the overall decline in the investment market. These losses are largely unrealized and expected to reverse over the long-term. Endowment investments at year-end totaled \$72.3 million.

SAM's audited financial statements provide more detail. These statements are available upon request.



STATEMENT OF OPERATING ACTIVITY	FY2000	%	FY2001	%
Gifts for Art Acquisition	\$240,155	1%	\$14,947,607	44%
Membership	2,943,291	17%	2,971,621	9%
Individual Gifts	2,444,288	14%	1,046,250	3%
Corporate Support	1,348,231	8%	2,259,872	7%
Foundation Support	1,279,073	8%	3,151,578	9%
Government Support	452,707	3%	685,705	2%
Admissions	2,122,469	13%	1,521,162	5%
Investment Income	3,456,002	20%	3,498,972	10%
Museum Store and Café	1,986,282	12%	1,523,118	5%
Other	735,629	4%	2,131,527	6%
<b>Operating Revenue</b>	<b>\$17,008,129</b>		<b>\$33,737,412</b>	
Accession of Art Objects	\$240,155	1%	\$14,947,607	44%
Facility and Security	2,244,486	13%	2,293,891	7%
Exhibition and Collection Care	3,897,516	23%	3,913,914	12%
Olympic Sculpture Park	161,825	1%	895,178	3%
Education	2,060,859	12%	2,223,914	7%
Marketing	1,611,103	10%	2,704,870	8%
Museum Store and Café	1,679,627	10%	1,201,532	4%
Development	2,409,452	14%	2,420,720	7%
Administration	2,163,812	13%	-2,470,817	7%
Depreciation	522,057	3%	651,528	2%
<b>Operating Expense</b>	<b>\$16,990,892</b>		<b>\$33,723,971</b>	
<b>Operating Surplus</b>	<b>\$17,237</b>		<b>\$13,441</b>	



Creating Perfection: Shaker Objects and Their Affinities, photo: Howard Giske



Chinese Ambassador Yang Jiechi visits The Embodied Image: Chinese Calligraphy from the John B. Elliott Collection



Weird and Whimsical: Northwest Art from the Permanent Collection, photo: Howard Giske



Harry Stonecipher, vice chairman of The Boeing Company, speaks at the spring Corporate Forum Breakfast, photo: Howard Giske

## DONORS to the SEATTLE ART MUSEUM

July 1, 2000–June 30, 2001

At the close of the fiscal year the Seattle Art Museum had more than 30,000 members who provided SAM a combined total of nearly \$3 million of unrestricted support. The museum would like to offer special thanks to all renewing and new members for this unprecedented level of support.

We would like to extend recognition to the following donors, whose combined giving to the membership programs, Annual Fund campaign, special events, and acquisitions, made our success possible and will impact generations for years to come.

### DONORS OF \$100,000 AND ABOVE

- ✓ Mr. and Mrs. Thomas W. Barwick
- ✓ Mr. and Mrs. Jeffrey H. Brotman
- ✓ Mr. and Mrs. Barney A. Ebsworth
- ✓ The Estate of Marjorie Edris Bill and Mimi Gates
- ✓ Mr. and Mrs. Rufus W. Lumry
- ✓ Mrs. William G. Reed, Jr.
- ✓ Jon and Mary Shirley
- ✓ Ms. Susan Winokur and Mr. Paul Leach

### DONORS OF \$50,000 TO \$99,999

- Anonymous
- Dr. and Mrs. Ellsworth C. Alvord
- Mr. and Mrs. Gerald Grinstein
- Mr. and Mrs. John H. Hauberg

### DONORS OF \$20,000 TO \$49,999

- Anonymous
- Mrs. Jane Davis and Dr. David R. Davis
- Bill And Melinda Gates Foundation
- Mrs. Sherry R. Fisher\*
- Mr. and Mrs. Richard C. Hedreen
- Henry and Mary Ann James
- Mr. and Mrs. Allan J. Kollar
- Mr. and Mrs. William H. Neukom
- Mrs. Roy Nutt
- Mr. and Mrs. Herman Sarkowsky
- Mr. and Mrs. Douglas Scheumann
- Mr. and Mrs. Harry C. Stonecipher
- Mr. and Mrs. Dean D. Thornton
- Mr. and Mrs. William True
- Mr. and Mrs. Douglas Walker
- Mr. and Mrs. Bagley Wright

### DONORS OF \$10,000 TO \$19,999

- Anonymous
- Mr. and Mrs. Michael D. Alhadeff
- Mr. Robert M. Arnold
- Mrs. Frederick Ayer
- Mr. and Mrs. Jack A. Benaroya
- Mr. Richard P. Cooley
- Mr. and Mrs. Cheney Cowles
- Norman Davis
- Mr. Robert B. Dootson
- Mrs. Lucia Navarre Erickson
- Marshall and Elena Hatch
- Mr. James E. Hussey
- Mr. and Mrs. Jay Jones
- Mrs. Janet W. Ketcham
- Key Foundation
- Mr. and Mrs. Leonard Klorfine
- Mr. C. Calvert Knudsen
- Mr. and Mrs. Gaither M. Kodis
- Miss Frances J. Kwopil
- Mr. Bryon R. Meyer
- Mr. and Mrs. Scott K. Morris
- Mr. and Mrs. Assen Nicolov
- Mr. and Mrs. Edward Nowogroski
- Mr. and Mrs. Sam Rubinstein
- Mrs. Wilfred W. Rystogi
- Mrs. David E. Skinner
- Mr. Richard L. Weisman
- Mrs. T. Evans Wyckoff
- Mr. and Mrs. Charles Wright, III

### DONORS OF \$5,000 TO \$9,999

- Mr. Tom Alberg and Ms. Judi Beck
- Mr. and Mrs. William W. Alberts
- Mr. and Mrs. Richard R. Albrecht
- Mr. and Mrs. Chap Alvord
- Mr. and Mrs. Stan Baier
- Mr. F. S. Bayley
- Mr. and Mrs. Watson Blair
- Mr. Richard M. Bressler and Mrs. Judith Fong-Bressler
- Mr. and Mrs. Steven Clifford
- Drs. Alexander Clowes and Susan Detweiler
- Mrs. Bryant R. Dunn
- Mrs. Paul S. Friedlander
- Mr. and Mrs. E. P. Garrett
- Mr. and Mrs. Robert Garrison
- Mimi Gardner Gates
- Ms. Katharyn Gerlich
- Mr. and Mrs. D. Wayne Gittinger
- Mr. and Mrs. Joshua Green III
- Mr. and Mrs. Max Gurvich
- Mr. and Mrs. David Heerensperger
- Mr. and Mrs. Patrick Hughes
- Mrs. Kyran E. Hynes
- Ted and Linda Johnson
- Robert Leonard
- Mr. and Mrs. Michael J. Malone
- Mr. and Mrs. David E. Maryatt
- Fred and Belle Maxwell
- Mr. and Mrs. John M. McClelland, Jr.
- Mr. and Mrs. John Meisenbach
- Mr. and Mrs. John Moga
- Mr. and Mrs. Furman C. Moseley
- Mrs. Darla Mueller and Dr. George Mueller
- Ms. Linda Nordstrom and Mr. Christian Siefert
- Mr. Peter Norton
- Mr. and Mrs. Everett P. Paup
- Mr. and Mrs. James C. Pigott
- Mr. and Mrs. Scott K. Pryde
- Mr. and Mrs. Brooks G. Ragen
- Mr. and Mrs. Stanley D. Savage
- Mr. and Mrs. Sam Rubinstein
- Ms. Marian E. Smith
- Mr. and Mrs. Harold E. Stack
- Mr. and Mrs. Malcolm Stamer
- Mr. and Mrs. C. Jaius Stratton III

- Mrs. George E. Taylor
- Mr. and Mrs. Bruce L. Titcomb
- Mr. and Mrs. William Vittoe
- Mr. and Mrs. David R. Watt
- Mr. and Mrs. Griffith Way
- Mrs. Arlene A. Wright
- Mr. H. S. Wright and Ms. Katherine Ann Janeway

### DONORS OF \$2,500 TO \$4,999

- Anonymous
- Mr. Bryan K. Abell
- Mr. and Mrs. Kenneth Alhadeff
- Mr. and Mrs. James E. Allison
- Mr. and Mrs. Jerry Anches
- Mr. and Mrs. Robert W. Ash
- Dr. and Mrs. Kevin Auld
- Mr. and Mrs. Don Axworthy
- Mr. and Mrs. D. Wayne Gittinger
- Mr. and Mrs. Carl G. Behnke
- Mr. and Mrs. Roger Belanich
- Mrs. Flora Correa Benaroya
- Ms. Amelia Berg
- Mr. Herman Blumenthal
- Mr. and Mrs. Paul Brainerd
- Dr. and Mrs. Oliver E. Cobb
- Dr. and Mrs. S. Allison Creighton
- Mr. and Mrs. Robert W. Cremin
- Ms. Dottie Cressman
- Mr. and Mrs. P. Cameron DeVore
- Mrs. Thelma S. Dorsey
- Mr. and Mrs. Robert B. Dunn
- Mrs. Helen G. Eisenberg
- Mr. and Mrs. Eugene Eldridge
- Ms. Judith Ellis
- Mr. Hugh S. Ferguson
- Mrs. Thomas B. Foster
- Richard and Joan Fox
- Ms. Polly Friedlander
- Mrs. Donald G. Graham, Sr.\*
- Dr. and Mrs. Charles F. Gravenkemper
- Ms. Judith B. Greenstein and Mr. Jeff Greenstein
- Dr. and Mrs. Thomas Griffin
- Ms. Lenore Hanauer

- Mr. and Mrs. James C. Hawkanson
- Mrs. Carol Henderson
- Mr. and Mrs. Robert Herbold
- The Hilan Foundation
- Mr. and Mrs. Lynn P. Himmelman
- Mr. and Mrs. Richard Hines
- Meredith P. Smith
- Mr. and Mrs. Floyd U. Jones
- Mr. Joe Jordan
- Mr. Robert D. Kaplan and Ms. Margaret Levi
- Mr. and Mrs. Charles Katz, Jr.
- Mrs. Mary Lou Kravik
- Mr. and Mrs. Keith Larson
- Ms. Lucia Lawrence
- Mr. Richard Lea
- Mr. and Mrs. Rhoady R. Lee, Jr.
- Mr. and Mrs. David Leland
- Mr. Mark B. Levine
- Mr. and Mrs. Dan Levitan
- Mr. and Mrs. James Lockwood, III
- Mrs. Geraldine Lucks
- Mrs. Jacqueline C. MacRae
- Mr. and Mrs. Tim Manning
- Mr. and Mrs. Rakesh Mathur
- Mr. and Mrs. Glen Milliman
- C. Blaise Mitsutama and Mr. J. Lauren Scott
- Mrs. Marie B. Nelson
- Mr. and Mrs. John F. Nesholm
- Dr. and Mrs. Charles Nolan
- Mr. and Mrs. John N. Nordstrom
- Mr. and Mrs. James W. P. Olson
- Mrs. George Parsons
- Kevin and Janell Patrick
- Ms. Molly Pengra
- Mr. and Mrs. Charles M. Pigott
- Mrs. Jean Radford
- Mr. and Mrs. Douglass A. Raff
- Mr. and Mrs. Jeff Raikes
- Rick and Jennifer Redman
- Mr. John A. Reed
- Ms. Jean A. Rhode
- Mrs. Marguerite Rickey
- Mr. and Mrs. Leslie Rosenberg
- Mr. H. Stewart Ross
- Jill Ruckelshaus
- Judith M. Runstad
- Mr. Thomas E. Schick

- Mr. and Mrs. Walter Schoenfeld
- John F. Shaw
- Ms. Roberta Sherman
- Langdon S. Simons
- Dorothy L. Simpson
- Janet L. Sinegal
- Meredith P. Smith
- Lin Snapp
- Mr. and Mrs. George Steiner
- Mrs. Marvel Stewart
- Barbara N. Street
- Mr. and Mrs. Richard E. Stroble
- Mr. Robert Strong
- Mr. and Mrs. Samuel N. Stroum
- Mr. and Mrs. Robert W. Thomas
- Ms. Marian Van Steenvoort
- Ms. Catherine Vare
- Mr. David D. Walter and Ms. Wendy G. Grant
- Mr. and Mrs. Gregory Whitten
- Mr. and Mrs. Ron Woodard
- Shauna Woods Mueller
- Mr. and Mrs. David E. Wyman
- Mr. Richard York
- Mr. and Mrs. R. Scott Zorn

### DONORS OF \$1,000 TO \$2,499

- Mr. and Mrs. Don G. Abel
- Mr. Bill Adamucci
- Tina and Bob Alexander
- Mr. James Allard and Ms. Rebecca Norlander
- Dr. and Mrs. Bruce Amundson
- Mr. and Mrs. Jerome L. Anderson
- Mr. and Mrs. Lucius A. Andrew III
- Mr. and Mrs. Ray Aspiro
- Mr. and Mrs. Rick Ayre
- Ms. Becky A. Baker and Mr. Ali Simsek
- Mr. and Mrs. Charles Barbo
- Mr. Eric Barkan and Ms. Gail Bankovich
- Mr. and Mrs. Peter Barrett
- Ms. Maria Barrientos
- Ms. Laurie Bauman Arnold and Mr. Stephen Arnold
- Mr. Douglas P. Beighle
- Ms. Karen Benson and Mr. Robert A. Huck
- Dr. and Mrs. Herbert Berry
- Ms. Jeanne Berwick and Mr. James Degel

- Mrs. Annie Black Garretson and Mr. Ralph Sims
- Mr. and Mrs. David C. Black
- Mr. Jeffrey B. Bishop
- Ms. Kim Bishop
- Mr. and Mrs. Bern T. Bodal
- Mr. and Mrs. Edgar O. Bottler
- Mr. Mitchell T. Bowie
- Mr. and Mrs. Robert R. Braun, Jr.
- Mr. and Mrs. Herb Bridge
- Ms. Gloria S. Browning
- Mr. and Mrs. V. Jay Broze
- Mr. and Mrs. Michael Brustkern
- Mr. and Mrs. Henry W. Burgess
- Mr. Joshua M. Burgin
- Mr. and Mrs. James D. Burns
- Mrs. M. Jeanne Campbell
- Mr. and Mrs. C. Kent Carlson
- Mrs. Lorna Carroll
- Mr. Colin D. Chapman
- Mr. and Mrs. Jon M. Christoffersen
- Mrs. Jane B. Clapp
- Mr. and Mrs. Robert S. Cline
- Mrs. Mary M. Clise
- Mr. Robert C. Coburn and Ms. Katie E. Sako
- Dr. and Mrs. Robert C. Coe
- Mr. and Mrs. Philip K. Collins
- Mr. Jon Conte
- Mr. and Mrs. Clifford B. Cooper
- Mr. and Mrs. John Creighton
- Mr. Fredric A. Danz
- Mr. and Mrs. Carl J. Davidson
- Ms. Caroline D. Davis
- Mr. James B. Douglas
- Mr. and Mrs. Jeff Dreyfuss
- Mr. and Mrs. Jim Duglap
- Mr. and Mrs. James A. Dunnam
- The Dupar Foundation
- Ms. Barbara Edl and Mr. Paul Kalanick
- Mr. and Mrs. Herbert Ellison
- Mrs. Jenny Emerson and Mr. Richard Emerson
- Mrs. Francisca Erickson
- Mr. and Mrs. George Ewart
- Mr. and Mrs. Abe Fallick
- Mr. and Mrs. Philip Farrar
- Mr. and Mrs. Robert Farrell
- Mr. and Mrs. Victor R. Felton
- Mr. and Mrs. Matthew Felton

- Mr. and Mrs. Allan Ferrin
- Mr. and Mrs. Barry E. Fetterman
- Mr. and Mrs. Craig Fiebig
- Ms. Susan G. Ford and Geoffrey D. Ogle
- Ms. Cathryn Fortune and Mr. John Shimer
- Mr. William E. Franklin
- Ms. Beverly Freeman
- Mr. Jerry Fulks
- Mrs. Doris H. Gaudette
- Mr. and Mrs. Max E. Gellert
- Mrs. Anne L. Gerber
- Drs. Edward F. Gibbons and Tony Black
- Mrs. Stanley D. Golub
- Mr. and Mrs. Thomas Gores
- Mr. and Mrs. John A. Gose
- Mrs. Margaret J. Graham
- Dr. Bert Green and Alexandra Brookshire
- Mr. and Mrs. Jonathan Green
- Mrs. Virginia Griffiths
- Mr. and Mrs. William Grigsby
- Dr. and Mrs. Edward Gruger
- Ms. Eleanor M. Hadley
- Mr. and Mrs. Michael R. Hallman
- Mrs. Jane Hallock
- Mr. and Mrs. John M. Harding
- Mary Lou Harris
- Mr. and Mrs. W. Alden Harris
- Mrs. Yasuko H. Harris and Mr. James W. Harris
- Ms. Rosemarie Havranek and Dr. Nathan P. Myhrbold
- Ms. Catherine W. Hayes and Mr. Frederick W. Hayes
- Ms. Jane Hedreen and Mr. David Thyer
- Mr. and Mrs. William Helsell
- Ms. Janet A. Hietter
- Mr. and Mrs. John G. Hill
- The Hill Family Foundation
- Mr. and Mrs. Mark Hitch
- Mr. John and Ms. Carolyn Hojaboom
- Mr. and Mrs. David Hsiao
- Ms. Carolyn Hubman
- Mr. and Mrs. Lawrence P. Hughes
- Mrs. Clare Hulbert
- Mr. and Mrs. Lyman W. Hull
- Ms. Lisa James and Mr. R. Paul Quincoces
- Mr. and Mrs. Andrew W. Jans

# DONORS to the SEATTLE ART MUSEUM

July 1, 2000–June 30, 2001

Mr. William M. Jenkins and Mrs. Ann Ramsey-Jenkins  
 Dr. Barbara Jessen  
 Claudia M. Johnson and Patrick Larkin  
 Mr. and Mrs. Lewis Johnson  
 Mr. and Mrs. John M. Kaiser  
 Dr. and Mrs. Charles Kaplan  
 Ms. Margaret Kelley  
 Mr. and Mrs. Craig Kennedy  
 Mr. and Mrs. Eugene Key  
 Mr. and Mrs. Igor Klimenkoff  
 Mr. Greg Kucera  
 Ms. Mary Lampson  
 Dr. Lorrie Langdale and Mrs. Molly D. Langdale  
 Ms. Cynthia Lanners and Mr. I. Eugene Ball  
 Mr. Wayne Larrabee  
 Ms. Linda Larson and Mr. B. Gerald Joh  
 Ms. Sharon M. Lee  
 Mr. James W. Leslie and Mrs. Jeanne Tweten  
 Ms. Victoria H. Leslie and Mr. Robert Duisberg  
 Ms. Janet Levy Pauli and Mr. William Pauli  
 Mr. and Mrs. Don Lewis  
 Mr. George M. Lhamon  
 Dr. and Mrs. Kurt Lidtke  
 Mr. E. W. Littlefield, Jr.  
 Mr. Gordon Livengood  
 Arlyne A. Loaker  
 Mrs. Shirley Loper  
 Ms. Lynn M. Manley and Mr. Alexander C. Lindsey  
 Mr. Ed Marquand  
 Ms. Judy Massong and Mr. Art Butler  
 Mr. and Mrs. Bruce R. McCaw  
 Marian McCutcheon  
 Mr. and Mrs. Kirby McDonald  
 Dr. and Mrs. Scott McIntyre  
 Mrs. Gertrude Mesher  
 Mr. and Mrs. Rick Middleton  
 Mr. Michael Miller and Ms. Oedipa Maas  
 Mr. and Mrs. Stanley Minor  
 Donald W. and Pamela Mitchell  
 Mr. Elliot V. Mock  
 Dr. Gail N. Morgan and Mr. Philippe Jeoffroy  
 Mrs. Ruth Morgan  
 Mr. Arno G. Motulsky  
 Ms. Kelly Ann Munn  
 Mr. Robert L. Mushen and Ms. Jene'e Pearce Mushen  
 Mr. Jonathan P. Nicholas  
 Mr. and Mrs. Donald Nielsen  
 Mr. and Mrs. R. M. Noffsinger  
 Mr. and Mrs. Douglas E. Norberg  
 Mr. Lee J. Obrzat and Mr. Daniel T. Ling  
 Mr. and Mrs. David Olson  
 Mrs. C. F. Osborn  
 Ms. Laura Ospanik and Dr. Stephen P. Robbins  
 Mr. and Mrs. John Osterhaus  
 Mr. and Mrs. Conelius J. Peck  
 Mrs. James K. Penfield  
 Mrs. Ursula Pfeffer  
 Ms. Gloria Pfeif  
 Ms. Mary Pigott and Mr. Roger Giesecke  
 Mr. Franklin W. Potter  
 Mr. and Mrs. Herbert Pruzan  
 Mr. and Mrs. John W. Purvis  
 Dr. Jens Quistgaard and Mrs. Pamela Brodie Quistgaard  
 Ms. Heidi Rabel  
 Mr. and Mrs. W. E. Rabel  
 Mr. James W. Ray  
 Mr. C. Wright Reade  
 Mrs. William G. Reed, Jr.  
 Mr. Philip E. Renshaw  
 Mr. and Mrs. Thomas Reveley

Ms. Shirley M. Ricketts  
 Ms. Annette Rieger and Mr. Roger Rieger  
 Mr. George Rolfe  
 Ms. Paula J. Rose  
 Mr. Jon H. Rosen  
 Mr. Gary A. Roshak  
 Mr. and Mrs. Walt Rotkis  
 Mr. and Mrs. Kevin Rowe  
 Ms. Kathleen Royer  
 Mr. and Mrs. John Rudolf  
 Mr. Sanford Sage  
 Ms. Carol A. Salisbury  
 Dr. and Mrs. Deepak Sawhney  
 Ms. Virginia H. Schmidt  
 Mrs. Mildred Sevenser\*  
 Dr. and Mrs. Stephen F. Shea  
 James and Barbara Shelton  
 Ms. Mary K. Shohl  
 Mr. John C. Siegler and Dr. Alexandra E. Read  
 Mr. and Mrs. Philip M. Smart, Sr.  
 Mr. and Mrs. Lester M. Smith  
 Mr. and Mrs. Donald J. Stabbert  
 Mr. and Mrs. Byron Strange  
 Mr. and Mrs. Daniel M. Streissguth  
 Ms. Patricia Tall-Takacs and Mr. Gary Takacs  
 Mr. and Mrs. David K. Y. Tang  
 Mr. and Mrs. Katsumi Tanino  
 Mr. and Mrs. Stephen Thal  
 Ms. Lynn Thorburn  
 Ms. Patricia M. Thorpe  
 Mr. and Mrs. Charles M. Tilden  
 Mr. and Mrs. Frederick W. Titcomb  
 Mr. Christoher H. Troth and Ms. Mary E. Jerome  
 Mrs. Henry Trubner  
 Mr. and Mrs. Gerard Tsutakawa  
 Mr. and Mrs. Stuart W. Turner  
 Mr. and Mrs. John Underwood  
 Ms. Rhonda S. Vandenburg  
 Mr. and Mrs. John D. Warner  
 Roberta Weeks  
 Ms. Jane C. Wells  
 Dr. Gail N. Morgan and Mr. Philippe Jeoffroy  
 Miss Winifred E. Weter  
 Ms. Annette B. Weyerhaeuser  
 Robert White Grad  
 Mr. David B. Wilcox  
 Mr. Robert B. Wilson  
 Mr. and Mrs. Scott Wilson  
 Mr. and Mrs. Wayne R. Wilson  
 Dr. Edward M. Winskill  
 Mrs. Neva D. Wiseman  
 Mr. and Mrs. Jeffrey Wright  
 Ms. Merrill Wright  
 Mrs. C. F. Osborn  
 Mr. Klaus Peter and Marsha Paulsell Zech

## DONORS OF \$500 TO \$999

Mrs. Charles W. Adams  
 Mr. and Mrs. Donald A. Adams  
 Mr. and Mrs. Alfred Adler  
 Ms. Samantha Agee  
 Mr. and Mrs. Willie C. Aikens  
 Mr. and Mrs. Herbert Pruzan  
 Mrs. Hideko Alber  
 Mr. and Mrs. James Allchin  
 Ms. Gwendolyn D. Allen  
 Mr. and Mrs. Knut Anderson  
 Mr. and Mrs. Stephen L. Anderson  
 Ms. Lisa Pigott Anderson and Mr. Michael John Anderson  
 Mrs. Marjorie Ando  
 Ms. Lauren Antonoff  
 Mr. and Mrs. Harry Applewhite

Mr. and Mrs. Doug Armintrout  
 Mr. and Mrs. John J. Atwood, Jr.  
 Nitamarie and Ogden Bailey  
 Mr. and Mrs. William J. Bain, Jr.  
 Mr. Francis C. Baker  
 Ms. Janine Baldridge and Ms. Mary M. Boyle  
 Mr. and Mrs. Richard Baldwin  
 Mr. and Mrs. Christopher Banks  
 Ms. Suzanne W. Barnett and Mr. Redmond J. Barnett  
 Mr. John A. Bates and Ms. Carolyn Corvi  
 Ms. Kathy M. Batman  
 Mrs. Lois M. Baugh  
 Mr. Thomas S. Bayley  
 Mr. and Mrs. James E. Beardsley  
 Mrs. Esther H. Beatty  
 Mr. and Mrs. John S. Behnke  
 Mr. Ethan Bell and Ms. Helen Bell  
 Alan and Jean Bentsen  
 Dr. Peter E. Bertozzi and Ms. Susan Cairns  
 Ms. Jeanne Berwick and Mr. James Degel  
 Ms. Pam Biallas  
 Ms. Roxanne Blanco-Mitchell and Mr. Charles T. Mitchell  
 Mr. and Mrs. William Booth  
 Mr. and Mrs. J. Cleve Borth  
 Mr. Phillip A. Boshaw  
 Mr. and Mrs. E. H. Boullioun  
 Mr. Robert A. Boundy and Ms. Barbara J. Martyn  
 Mr. and Mrs. John T. Boyd  
 Jonathan J. Bridge and Bobbe J. Bridge  
 Ms. Mimi Brown  
 Mr. Mark R. Busto and Ms. Maureen Lee  
 Ms. Ruth Butterfield and Mrs. Mary Batie Peter and Leslie Byrnes  
 Ms. Tricia Caine  
 Ms. Elizabeth M. Campbell  
 Mr. James C. Cannon and Mr. Robert Haig  
 Mr. and Mrs. Chris Carletti  
 Mr. and Mrs. Irving L. Carlin  
 Ms. Adelle Carlson  
 Mr. and Mrs. Michael A. Casteel  
 Mr. and Mrs. Kent P. Chaplin  
 Mr. and Mrs. Richard Chouinard  
 Mr. and Mrs. Randy H. Clark  
 Ms. Karyl M. Clark  
 Mr. Fred Cogswell and Mrs. Evelyn J. Cogswell  
 Ms. Susan Cole and Mr. Neil Mathison  
 Mr. and Mrs. Richard Contreras  
 Mr. Michael Cooper and Mrs. Chiu-Yen Cooper  
 Ben and Virginia Cosgrove  
 Mr. and Mrs. Jack Courtney  
 Mr. and Mrs. William R. Crossett  
 Mr. and Mrs. Jonathan R. Crossley  
 Mr. Patrick M. Curran and Ms. Floren L. Sempel  
 Mr. and Mrs. A. E. Daniel  
 Ms. Christine Davis-Goff and Mr. Wayne Widdis  
 Ms. Anne-Lise Deering and Mr. Michael F. Anna  
 Mr. and Mrs. Thomas J. Delanty  
 Mr. and Mrs. Brewster C. Denny  
 Mrs. Maggie McKee Dorsey  
 Ms. Patricia Dougherty  
 Mr. and Mrs. Ray F. Downs  
 Ms. Barbara Downward and Mr. Rick Hemmen  
 Dr. Fred M. Drennan and Dr. Teresa Massagli  
 Mr. and Mrs. Robert Dreyfoos  
 Mr. Jerry J. Dunietz and Ms. Laurie Minsk  
 Mr. and Mrs. Joseph Dunn  
 Mr. and Mrs. Phil Duryee  
 Ms. Cheryl L. Earnheart  
 Mr. and Mrs. Thomas Elliott

Mr. James R. Ellis  
 Ms. Stephanie Ellis-Smith and Mr. Douglas C. Smith  
 Mr. and Mrs. Michael Ellison  
 Mrs. Tammy Erickson and Ms. Karen Erickson  
 Mr. and Mrs. Robert A. Eshelman  
 Mr. and Mrs. Daniel J. Evans  
 Mr. and Mrs. James R. Faulstich  
 Mr. and Mrs. David Fay  
 Synnove Fielding  
 Ms. Lynn Fischer and Mr. George Shaw  
 Mr. and Mrs. Robert H. Fisher  
 Mr. and Mrs. Jerry J. Fjellberg  
 Mr. Robert L. Fletcher and Hon. Betty B. Fletcher  
 Ms. Marilyn Freeman and Mr. William M. Walsh  
 Dr. Charles French and Mr. Greg Meredith  
 Ms. Linda M. Fu and Mr. Aaron T. Fu  
 Ms. Patricia Galloway and Mr. Kris Nielsen  
 Mrs. Helen M. Gamble  
 Mr. B. H. Gardner, Jr.  
 Mr. Gary D. Gayton  
 Mr. and Mrs. A. Richard Gemperle  
 Mr. and Mrs. Irvin Gendler  
 Ms. Irene Gendron and Ms. Janet Sullivan  
 Mr. and Mrs. James B. Gerhart  
 Dr. Nicole Gibran and Dr. F. Isik  
 Ms. Alison Gilligan and Mr. David Curtis  
 Mr. and Mrs. Keith Gleason  
 Mr. Scott Glendinning and Ms. Beverly Gimlin  
 Mr. and Mrs. Paul Goode  
 Dr. Gary Goodman and Dr. Joanna B. Goodman  
 Mr. and Mrs. H. Gorlick  
 Mr. Ed Graczyk and Mr. Robert A. Michels  
 Mr. and Mrs. Donald Granston  
 Mr. Richard T. Gray and Mrs. Sabine Wilke  
 Ms. Jodi Green and Dr. Mike Halperin  
 Ms. Susan Guffey and Mr. Gene Priestman  
 Ms. Mary B. Gust and Mr. Kerry A. Gust  
 Dr. Donald Guthrie and Ms. Elizabeth J. Hebert Duncan Haas  
 Ms. Nancy D. Haigwood  
 Mrs. Jane Hamilton  
 Ms. Kathleen Hanlon and Mr. Mark Bickel  
 Mr. and Mrs. Glenn L. Harrington  
 Ms. Catherine Hart  
 Mr. Leland Hartwell and Ms. Theresa Naujack  
 Mrs. Anne G. Hauberg  
 Mr. Steve Herczeg and Ms. Tanya Stock  
 Dr. and Mrs. Richard Herzberg  
 Mrs. Helen M. Hitchman  
 Ms. Louise Clarke Hobbs and Mr. Robert Andrews Hobbs  
 Mr. and Mrs. James W. Holley  
 Mr. and Mrs. Richard S. Holmgren, Jr.  
 Mr. Wayne E. Holt and Ms. Phyllis E. Kaiden  
 Mrs. William D. Horton  
 Ms. Susanne F. Hubbach  
 Mrs. Fred R. Huey  
 Mrs. J. P. Hunter  
 Mr. and Mrs. Wendell P. Hurlbut  
 Mrs. Charlotte Hutchinson Reed  
 Mr. Gary Jacky and Ms. Jade Barrett  
 Mr. and Mrs. Jay Jacobs  
 Mrs. Rosemary W. Johnson  
 Mr. and Mrs. Jerome Johnson  
 Ms. Nora B. Judd and Mr. Steven G. Judd  
 Ms. Jeanne A. Kanach  
 Mr. and Mrs. Francis Kareken  
 Ms. Patricia Keegan and Mr. Thomas Lennox  
 Dr. and Mrs. John M. Kennelly  
 Mr. and Mrs. Larry Kenney

Mr. John Keppler  
 Mrs. Helen M. Kersten  
 Ms. Betsy B. King and Mr. Larry O'Rourke  
 Mr. Ralph Klose  
 Mr. Ted Koehn  
 Mr. and Mrs. William W. Krippaehne, Jr.  
 Mr. Christopher R. B. Laing and Ms. Darryl Jane Dayton  
 Mr. and Mrs. Peter C. Lamb  
 Mr. Kurt Lang and Mrs. Gladys Engel Lang  
 Mrs. Lea and Mr. Lea  
 Mrs. Olivia M. Leale and Ms. Jennifer Harvie-Watt  
 Mr. Ven T. Lee and Ms. Winnie Lee  
 Mrs. Marilyn Lilly  
 Mr. and Mrs. David Lindsey  
 Ms. R. Gloria Lobb  
 Ms. Betty L. Lock and Mr. Randell Spaan  
 Ms. Laurin Lott and Mr. Michael Wangen  
 Mr. and Mrs. Henry Louie  
 Mr. William G. Lucks  
 Mr. Brian Lyson and Ms. Jane Lyson  
 Terry Macaluso  
 Mr. and Mrs. Patrick T. Mallahan  
 Dr. and Mrs. Charles A. Mangham  
 Dr. and Mrs. Mart Mannik  
 Ms. Kristin L. Marcrauder  
 Mrs. Nancy Chayne Martin  
 Mr. and Mrs. George W. Martin, Jr.  
 Ms. Stephanie Martin  
 Mr. Christopher Martin  
 Mr. and Mrs. David Mattson  
 Mr. and Mrs. William H. McAleer  
 Pamela and Bob McCabe  
 Ms. Marcella McCaffray  
 Mr. and Mrs. Keith McCaw  
 Mr. Jason McCoy and Mr. Stephen M. Cadwalader  
 Mrs. Carol McCready-Cohn and Mr. Steven Cohn  
 Ms. Ethel McEachron  
 Mr. Douglas McIlraith  
 Mr. Bill McJohn  
 Ms. Ruth McLuckie  
 Mr. and Mrs. Terence M. McTigue  
 Dr. and Mrs. John H. Mensher  
 Ms. Pipena J. K. Mercouriadis  
 Mr. Edward Miles  
 Mr. and Mrs. Roger Miller  
 Ms. Nell B. Miller  
 Mrs. Lucy Van B. Mitchell  
 Ms. Anne Mize  
 Dr. and Mrs. Dewey J. Moody  
 Mr. and Mrs. John S. Moore  
 Mr. Robert S. Mucklestone and Ms. Megan E. Kruse  
 Mr. and Mrs. Harry Mulliken  
 Mrs. Sarah Navarre  
 Mr. and Mrs. David A. Nelson  
 Ms. Marisis Nelson  
 Ms. Mary S. Nicol  
 Ms. Elaine Nonneman and Ms. Marie Roo  
 Mr. and Mrs. Carlos L. Obando  
 Mr. and Mrs. Arthur P. Oberto  
 Ms. Annie Olszewski  
 Ms. Kathy Ostlund and Mr. Terry Ostlund  
 Ms. Cynthia C. Paur  
 Ms. Georgia Perez  
 Mr. and Mrs. Steven C. Phelps  
 Ms. Elizabeth Plotkin and Mr. Richard Spore  
 Mr. and Mrs. John D. Pomfret  
 Mr. and Mrs. Lloyd W. Powell  
 Barbara Prestrud  
 John R. and Suzanne L. Price

Ms. Julia Pitt  
 Mr. and Mrs. John P. Privat  
 Mr. and Mrs. Greg Pursell  
 Ms. Linda Quirk and Mr. John Marks  
 Ms. Heidi Rackley  
 Mrs. Patti Rader and Mr. Randall B. Rader  
 Ms. Vivian Miller Rahl and Mr. Keith Rahl  
 Philip M. and Valerie J. Ramey  
 Ms. Jane Ramsey  
 Ms. Victoria Reed  
 Mr. Andrew Rees and Ms. Sheri Rees  
 Mr. Ben Reser  
 Dr. and Mrs. Glen G. Rice  
 Ms. Toni Richmond  
 Ms. Kim Richter  
 Mr. and Mrs. Charles E. Riley  
 Ms. Paula Rimmer and Mr. Lane DeCamp  
 Mr. David L. Roberts  
 Mr. Michael Robins  
 Mrs. Caryl K. Roman  
 Mr. and Mrs. Pete Rose  
 Mr. and Mrs. Kermit Rosen, Jr.  
 Mr. and Mrs. Todd Rosenberg  
 Mr. and Mrs. Glynn W. Ross  
 Dr. and Mrs. Denton Rossell  
 Mr. Sam Rubenstein  
 Mr. James T. Russell and Mrs. Barbara Russell  
 Mr. and Mrs. George F. Russell, Jr.  
 Mrs. Bettye B. Salter  
 Mr. and Mrs. Jack Sargent  
 Mr. and Mrs. Robert M. Sarkis  
 Dr. and Mrs. Robert Schaefer  
 Mr. and Mrs. George S. Schairer  
 Mr. and Mrs. Frederick B. Scheetz  
 Peter G. and Elva I. Schmidt  
 Dr. and Mrs. Neil F. Schneider  
 Gilliat G. Schroeder and Sherrill B. Schroeder  
 Mr. and Mrs. Stephen P. Scofield  
 Mr. Steve Scott and Mr. Darrin Emrick  
 Mr. and Mrs. J. Randolph Sealey  
 Mr. and Mrs. Morgan Seeley  
 Mr. and Mrs. James Sells  
 Ms. Lisalyn Sharp and Mr. David Sharp  
 Steve and Kate Shaughnessy  
 Mr. and Mrs. William B. Showalter  
 Mr. and Mrs. Alex Shulman  
 Mr. and Mrs. David Sidell  
 Dr. and Mrs. Stanford J. Silberman  
 Dr. and Mrs. R. W. Simpson  
 Dr. Charles Simrell and Ms. Deborah L. Giles  
 Mr. and Mrs. Ray Simutis  
 Mr. and Mrs. John Skidmore  
 Mr. and Mrs. David E. Skinner  
 Ms. Marilyn Skone  
 P. J. Sluiter  
 Mr. W. Graham Smith  
 Mrs. Adelaide H. Smith and Capt. James E. Heg  
 Dr. and Mrs. Alvy R. Smith  
 Mr. W. Travis Snider and Ms. Barbara J. Earl  
 Dr. Mark G. Sollek and Ms. Kimberly A. McNally  
 Mr. Ken Sparks and Ms. Beth Cook  
 Mr. and Mrs. Ronald Spaulding  
 Mrs. Sonia Spear  
 Mr. Donald E. Spickard and Dr. Joan C. Ullman  
 Mr. and Mrs. Jack J. Spitzer  
 Ms. Evelyn Casey Steen  
 Dr. Michael Steiner  
 Ms. Evelyn J. Sterne and Mr. Antonio Estrada

Ms. Esther L. Stevenson and Ms. M. Davis  
 Mr. Douglas J. Stimson  
 Mr. and Mrs. George H. Stone  
 Ms. Patty Stonesifer  
 Mr. Robert Story and Mrs. Ethel McCroskey Story  
 Ms. Elaine Stucker  
 Mr. and Mrs. Mel Sturman  
 Mr. and Mrs. Paul Suzman  
 Dr. and Mrs. August G. Swanson  
 Mr. and Mrs. Daniel H. Temkin  
 Dr. and Mrs. E. D. Thomas  
 Mr. and Mrs. Louis Tice  
 Mr. and Mrs. Donald F. Todd  
 Ms. JoAnne L. Tompkins and Mr. Jon Schorr  
 Rae Tufts  
 Mr. Menno van Wyk and Mrs. Denita Benyshek  
 Dr. and Mrs. Theodore Wagner  
 Mr. and Mrs. James A. Walsh  
 Mr. and Mrs. Donald K. Weaver, Jr.  
 Mr. Laurence Weinberg  
 Mr. and Mrs. Robert Weiner  
 Mr. Brian Weinstein and Ms. Gaylene Vaden  
 Mr. and Mrs. Ronald Weinstein  
 Gail and William Weyerhaeuser  
 Mr. and Mrs. Tomlinson White  
 Mr. Peter Wieland  
 Ms. Lynn T. Wilhoit  
 Ray and Judy Williams  
 Mrs. Karin A. Williams  
 Mr. Jay Wills and Ms. Susan James  
 Mr. and Mrs. Bruce Willsie  
 Dr. and Mrs. Kenneth R. Wilske  
 Dr. and Mrs. Chris Wilson  
 Ms. Linda Wise  
 Mr. and Mrs. Leighton P. Wood  
 Edward J. Woods and Nancy E. Sleight  
 Mr. and Mrs. Warren Wooster  
 Mr. and Mrs. Winslow W. Wright  
 Mr. and Mrs. William W. Wurts  
 Ms. Judith Yeakel  
 Mrs. Earl Younglove

## DONORS OF \$250 TO \$499

Anonymous  
 Mr. William Abens and Mrs. Lonnie Johnson-Brown  
 Mr. and Mrs. Nicholas Adams  
 Mr. Christopher Adams  
 Ms. Ellen Alben and Mr. Alex Alben  
 Mrs. Anne H. Albro  
 Mr. Ike Alhadeff  
 Dr. and Mrs. Edward E. Almquist  
 Ms. M. Annette Althoff  
 Mr. and Mrs. Frank Amato  
 Dr. and Mrs. Stig B. Andersen  
 Mr. and Mrs. Peter Anderson  
 Ms. Janine Anderson and Mr. Terry LeLievre  
 Dr. and Mrs. Stephen Anderson  
 Mrs. Leo A. Anderson  
 Mr. Charles Anderson  
 Ms. Stephanie Arbogast and Mr. Art Formetoo  
 Dr. and Mrs. Ted Armstrong  
 Mr. and Mrs. Dick A. Armstrong  
 Mr. and Mrs. Charles Arvidson  
 Ms. Debbi Asmund and Mr. Larry Vanselow  
 Mr. and Mrs. A. Lee Atherton  
 Mrs. Shirley R. Athmann  
 Mr. and Mrs. Richard H. Atkinson  
 Mr. and Mrs. Reynold Atlas  
 Mr. Perry Atterberry  
 Dr. Ray W. Baalman and Dr. Elizabeth Baxter-Baalman

Mr. and Mrs. Manson F. Backus  
 Ms. Cara Bailey  
 Mr. and Mrs. William Peter Bailey  
 James Baird  
 Mr. and Mrs. Robert A. Baker  
 Mrs. John S. Baker  
 Ms. Yvonne Banks  
 Ms. Susan Bannon and Mr. Jim Lowe  
 Dr. Ronald L. Barclay  
 Jackie Bardsley and Robert Howell  
 Dr. and Mrs. Robert H. Barnes  
 Sybil Barney and Joel Shepard  
 Ms. Susan L. Barry and Ms. Karen Barry  
 Renate Bartl and Marion Bartl  
 Mr. and Mrs. Jon Barwick  
 Ms. Lolly Bates  
 Mr. and Mrs. John J. Baum  
 Mr. and Mrs. Christopher T. Bayley  
 Casey Beachley and Steven G. Mlodinow  
 Mr. and Mrs. Stephen J. Beaudry  
 Ms. Linette Beaudry and Mr. Robert Nokes  
 Mr. and Mrs. John G. Behmke  
 Mr. David Beitel and Mrs. Joanna Beitel  
 Mr. and Mrs. Fred O. Bell  
 Mr. Andrew Bennett  
 Dr. and Mrs. Ronald J. Berenson  
 Mr. and Mrs. Craig Berne  
 Ms. Laurie Besteman and Mr. Jack Lauderbaugh  
 Ms. Carol Betts  
 Mr. and Mrs. Jack N. Bigford  
 Mr. and Mrs. Dana Birkby  
 Mr. Neil W. Black and Ms. Sherri Wolson  
 Ms. Tamara Black  
 Ms. Teresa Bledsoe  
 Mr. Jerome R. Block and Ms. Barbara Block  
 Ms. Cathryn Blodgett  
 Mrs. and Mr. Terri Bomgardner  
 Ms. Barbara A. Bonamy  
 Ms. Isabel Marie Bone  
 Mr. and Mrs. Philip J. Boren  
 Mr. and Mrs. Alfred F. Borg  
 Mr. Ed Borgias  
 Mr. and Mrs. Joseph Borich  
 Mr. and Mrs. Rodney L. Bowden  
 Dr. and Mrs. J. Scott Bowen  
 Ms. Megan J. Bowman  
 Ms. M. L. Terri Boyd and Ms. Sherri Basha  
 Mr. and Mrs. Michael Boyle  
 Mr. and Mrs. Raymond R. Brandstrom, Jr.  
 Marilyn Brashen  
 Mr. and Mrs. James P. Brennan  
 Mr. and Mrs. Donald Brenner  
 Mr. and Mrs. Robert Bridge  
 Dr. Sylvia C. Broady  
 Ms. Mary Brodd and Mr. Michael Crenshaw  
 Mr. Wilfrid Broderick and Ms. Bea Kumasaka  
 Dr. Andrew Bronstein  
 Mr. and Mrs. Stephen Brooks  
 Mr. and Mrs. Denis O. Brown  
 Mr. Jeffrey M. Brown and Mrs. Philip D. Sternola  
 Mr. Michael Brown and Mr. Mark Mead  
 Mr. and Mrs. Willis R. Brown  
 Ms. Donna T. Brown  
 Dr. and Mrs. Zane Brown  
 Mrs. Caroline C. Browne  
 Ms. Barbara I. Browning  
 Mr. and Mrs. Alfred M. Bryman  
 Mr. Robert J. Bryson  
 Mr. George U. Buck and Ms. Gloria Buck  
 Mrs. Ann S. Buckner

## DONORS to the SEATTLE ART MUSEUM

July 1, 2000–June 30, 2001

Ms. Robin Bunkley and Ms. Christine C. Johnson  
 Dr. and Mrs. Ernest Burgess  
 Mr. and Mrs. Ward Buringrud  
 Mrs. Merian Bury  
 Miss Mary J. Bushell  
 Ms. Nadine F. Butler and Mr. Ned Collins  
 Mr. and Mrs. Paul Butzi  
 Vincenzo Caiazzo  
 Ms. Phyllis Cairns and Ms. Helene Montroy  
 Dr. and Mrs. James R. Calahan  
 Mrs. Mary Anna Torres Calderon  
 Mr. and Mrs. Donald M. Caldwell  
 Mrs. Lucile E. Cale\*  
 Dr. William E. Callahan  
 Ms. Corinne A. Campbell  
 Mr. and Mrs. Peter Cannon  
 Mr. and Mrs. Thomas Captain  
 Mr. and Mrs. Curtis Carmean  
 Dr. and Mrs. John B. Carpenter  
 Mr. Kirk M. Carter and Ms. Jennifer Russon  
 Mr. and Mrs. James T. Cassan  
 Mrs. Geraldine F. Caton and Mr. L. Caton  
 Ms. Margaret Ceis  
 Mr. and Mrs. C. R. Chadwick  
 Ms. Laura E. Chandler  
 Mr. Philip S. Chanan and Dr. Audrey W. Chanan  
 Mr. and Mrs. Richard U. Chapin  
 Mr. and Mrs. Richard C. Chappelle  
 Ms. Heidi Charleson  
 Gian-Emilio Chatrian and Teresa Rattazzi  
 Ms. Georgiana R. Chave  
 Mark K. and Peg Cheirrett  
 Mr. and Mrs. Alexander Chin  
 Dr. and Mrs. David P. Christie  
 Mrs. Lydia M. Claesson  
 Mr. Matthew N. Clapp, Jr. and Ms. Tamzen A. Talman  
 Mr. and Mrs. Rex W. Clark  
 Ms. Christi A. Clark  
 Mr. Patrick Claybaugh and Mrs. Julie Claybaugh  
 Ms. Polly Close and Mr. Mark Bolender  
 Ms. Therese Coad  
 Mr. and Mrs. John C. Cochenour  
 Dr. Barbara Coda-Chambers and Dr. Joseph W. Chambers  
 P. G. Codling  
 Mr. and Mrs. Harold Coe  
 Ms. Jacqueline Cohn  
 Mr. and Mrs. Richard D. Collins  
 Dr. Lou Colwell and Mr. R. Bruce Colwell, Jr.  
 Ms. Frances L. Condie  
 Mr. Rodney S. Cone and Ms. Rhonda Cone  
 Mr. and Mrs. Gerald Conley  
 Mr. and Mrs. Charlie Conner  
 Mr. Kevin Cooper  
 Ms. Jeanne Counts  
 Ms. Jennifer Coursen  
 Mr. and Mrs. Mike Courtnage  
 Mr. and Mrs. Charles B. Crane  
 Mr. and Mrs. Thomas R. Croker  
 Mrs. Richard A. Crooks  
 Mr. and Mrs. Charles T. Cross  
 Mr. Mark Cullen  
 Mr. and Mrs. Gary Culver  
 Mr. and Mrs. Charles C. Curran  
 Mr. Thomas Cushing and Ms. Kirsten White  
 Mr. John Cusick and Ms. Christi McGinley  
 Dr. and Mrs. David C. Dale  
 Mr. and Ms. Jeff R. Dahir  
 Mr. and Mrs. Richard M. Danziger

Mr. David M. Darby and Mrs. Constance S. Standish  
 Ms. Kimberly L. Dauts and Mr. Dennis Dauts  
 Mr. and Mrs. Robert P. Davidson  
 Mr. and Mrs. Aubrey Davis  
 Mr. and Mrs. Robert R. Davis, Jr.  
 Mrs. J. Elizabeth Davis  
 Mr. Allan E. Davis and Dr. Nora Davis  
 Ms. Diane Davis and Ms. Jessica Amoateng  
 Mr. Arthur De Haan and Ms. Lili Hein  
 Mr. and Mrs. Carlisle S. Dean  
 Ms. Joan E. Dean  
 Mr. and Mrs. Steve Dennis  
 Ms. Maria J. Denny and Mr. Jim Kadjababian  
 Mr. and Mrs. James C. Denton  
 Mr. Donald Desalvo, Esq. and Mrs. Susan Wagner-Desalvo  
 Mrs. June DeVito  
 Mr. Richard S. DeVore  
 Ms. Ellen Dial and Mr. Joseph Dial  
 Mrs. Wilma N. Dick  
 Mr. Charles D. Dickey III and Mrs. Sheila Wyckoff-Dickey  
 Dr. and Mrs. R. H. Dickinson  
 T. E. Dickinson  
 Mrs. Gabriele Dickmann  
 Mr. and Mrs. T. S. Dietrich, Jr.  
 Ms. Mary Ditkoff  
 Dr. and Mrs. Lary S. Dobbs  
 Ms. Patricia Donnelly  
 Mr. and Mrs. David C. Driver  
 Mr. and Mrs. Gary W. Drobnack  
 Mr. and Mrs. Mike Drummond  
 Mr. and Mrs. Joseph Duffy  
 Mr. and Mrs. William L. Duncan  
 Mr. and Mrs. William J. Dunn  
 Ms. Peggy Z. Dunner  
 Mr. and Mrs. Henri F. Duyzend  
 Mr. Burke C. Dykes  
 Ms. Jane M. Eagle-Cable  
 Ms. Carol P. Eastin  
 Dr. and Mrs. Donald E. Eastly  
 Mr. and Mrs. Thomas Ebrey  
 Mr. and Mrs. Travis Eckert  
 Mr. Malcolm L. Edwards  
 Mr. and Mrs. Lowell B. Eldrenkamp  
 Dr. and Mrs. Alvin Eller  
 Ms. Kate Elliott  
 Dr. and Mrs. John W. Ensinn  
 Ms. Sherri Erickson  
 Mr. and Mrs. Carl Erling  
 Mr. and Mrs. Herb Ershig  
 Mr. Grant W. Erwin, Jr. and Ms. Marion B. Embick  
 Ms. Joanne Euster and Mr. Stephen Gerhardt  
 Mrs. Iris F. Ewing  
 Mr. and Mrs. Martin Falsberg  
 Mrs. Eloise T. Fancher  
 M. Y. Fechner and W. K. Fechner  
 Mr. and Mrs. Joel Feigenbaum  
 Ms. Ellen L. Ferguson  
 Mr. and Mrs. Graham Fernald  
 Lt. Col. Helmut Fichtler and Ms. Elizabeth Baker  
 Mr. Roland C. Fiegner  
 Ms. Kaylyn Fillmore and Ms. Deborah Harkson  
 Terry J. and Linda Finn  
 Mr. and Mrs. David B. Fischbach  
 Ms. Teri A. Fischer  
 Mrs. Sylvia Fisher  
 Mr. and Mrs. David C. Fisher  
 Mr. and Mrs. David Fisher, Jr.  
 Mr. and Mrs. Glen W. Fisher

Mr. and Mrs. Daniel R. Fisher  
 Mrs. Betsy Fitzgerald  
 Mr. Kevin Flaherty and Ms. Tana D. J. Senn  
 Dr. and Mrs. Robert S. Fleming  
 Mr. and Mrs. Clifford Floberg  
 Dr. and Mrs. Willis M. Fong  
 Ms. Karen E. Ford and Ms. Susan Mars  
 Mr. and Mrs. Richard D. Ford  
 Mr. and Mrs. Barry I. Forman  
 Mr. and Mrs. David Foster  
 Dr. Davis B. Fox and Mrs. Jill Spitzer-Fox  
 Ms. Peggy Frasse  
 Dr. Timothy Frazer  
 Mr. Douglas Frazer and Ms. Lisa Cabreza  
 Mr. and Mrs. Spencer Frazer  
 Ms. Mary Claire Frazier  
 Mr. and Mrs. Joe Freedman  
 Mrs. June DeVito  
 Ms. Marilyn J. Friedlander and Mr. Gilbert Scherer  
 Mr. and Mrs. Edward J. Fries  
 Ms. Maureen S. Frisch  
 Ms. Moira Fulton  
 Mr. and Mrs. Joe Gaffney  
 Mr. and Mrs. Ben J. Gantt, Jr.  
 Dr. and Mrs. Leon P. Gardner  
 Mr. and Mrs. Stuart A. Garrie  
 Mr. and Mrs. John Garrison  
 Dr. and Mrs. Stanley Gartler  
 Ms. Laura Gates  
 Mr. and Mrs. Adam Geballe  
 Ms. Nathalie J. Gehrke and Adam Gehrke  
 Ms. Linda Gerrard  
 Mr. and Mrs. Robert L. Gerth  
 Mr. and Mrs. David Giuliani  
 Ms. Vicki Glant and Mr. Gary Glant  
 Dr. and Mrs. Dennis Glauber  
 Ms. Sandra Glazer-Lake  
 Mr. and Mrs. Malcolm Gleser  
 Mr. and Mrs. Lawrence R. Glisten  
 Dr. and Mrs. Bernard S. Goffe  
 Dr. and Mrs. George Golden  
 Mr. and Mrs. John L. Goodman  
 H. P. Gordon and Kathleen Kohten-Gordon  
 Mr. and Mrs. David Goularte  
 Dr. Laura B. Gowen  
 Mr. and Mrs. William Grace  
 Mr. and Mrs. Thomas P. Graham  
 Ms. Suzanne Grant and Mr. Don Harper  
 Dr. Harry A. Grant  
 Mr. and Mrs. Douglas M. Graves  
 Dr. and Mrs. J. Thomas Grayston, M.D.  
 Mrs. Jane G. Green  
 Mr. Jonathan A. Green and Mrs. Jean Komai Green  
 Mr. Jonathan Green and Mrs. Brenda Berry-Green  
 Ken and Betsy Greenbaum  
 Mr. Brian Gregory  
 Mr. and Mrs. Albert Griffiths  
 Mr. and Mrs. Brian Grimes  
 Mr. and Mrs. John E. Grinslade  
 Mr. and Mrs. John D. Grisebaum  
 Ms. Susan Grover and Mr. Richard Thurston  
 Mr. and Mrs. Mark R. Guidry  
 Mr. and Mrs. Frank J. Guthrie  
 Ms. Linda B. Haas  
 Dr. and Dr. John H. Hackett  
 Ms. K. Diane Haelsig and Mr. Richard Haelsig  
 Dr. John M. V. Hagen and Mrs. Dorothy F. Hagen  
 Mr. and Mrs. Jerome Hagstrom  
 Mr. and Mrs. Steven W. Hale

Mrs. Monika Hall and Ms. Elisabeth Hall  
 Mr. and Mrs. E. Hammarlund  
 Ms. Jeanne Hammond  
 Mr. Stephen Handley  
 Mr. and Mrs. William A. Hanlin  
 Dr. and Mrs. S. T. Hansen, Jr.  
 Ms. Therese Hansen and Mr. James A. McDermott  
 Dr. and Mrs. J. T. Hansen  
 Ms. Carolyn J. Hansen and Mr. Ross Arnold  
 Mr. Erik J. Hanson  
 Mr. and Mrs. Peter C. Hanson  
 Dr. Roy H. Haralson  
 Dr. and Mrs. W. Benson Harer, Jr.  
 Mr. and Mrs. Franklin M. Harold  
 Mrs. Dickinson Harper  
 Mr. Paul Harrington and Ms. Daniella Kim  
 Mr. Roger L. Harris and Ms. Karen L. Howard  
 Dr. and Mrs. Brad Harris  
 Mr. James Harris and Mr. Carlos Garcia  
 Mr. and Mrs. Howard Harris  
 Mr. Kris Hart  
 Mr. and Mrs. Larry Hartman  
 Dr. G. A. Hashisaki and Dr. F. J. Tubridy  
 Dr. Sally Hasselbrack  
 Dr. and Mrs. James W. Haviland  
 Mr. and Mrs. David H. Hawes  
 Mr. and Mrs. John Hawkins  
 Mr. and Mrs. Robert F. Hayman  
 Ms. Laura Gates  
 Dr. and Mrs. J. Patrick Heffron  
 Mr. Robert B. Heilman  
 Mrs. Margaret D. Hellyer  
 Ms. Tina Helsell and Mr. William R. Messing  
 Mrs. Charlotte Henke  
 Mrs. Wendolyn J. Herman and Dr. Cliff Herman  
 Mr. Newby Herrod and Ms. Catherine Herrod  
 Mr. and Mrs. Rick Hervey  
 Ms. Lynne M. Hess  
 Mr. and Mrs. Bill Heston  
 Mr. David M. Hewitt and Ms. Marcia Wagoner  
 Mr. and Mrs. Andrew G. Hilien  
 Mr. Frederick Hill  
 Mr. and Mrs. Steven Hill  
 Ms. Margaret Hill and Mr. Robert E. Hill  
 Ms. Suzanne Hittman  
 Dr. Christine K. Ho  
 Mr. and Mrs. Greg Hoeker  
 Mr. and Mrs. David D. Hoff  
 Dr. and Mrs. Richard A. Hoffmeister  
 Mr. and Mrs. Brian G. Holmes  
 Helen Mary Holt  
 Ms. Nancy J. Honhorst  
 Mr. and Mrs. Frank H. Hopkins  
 Mr. and Mrs. William W. Hoppin, Jr.  
 Ms. Carol Hornall  
 Ms. Margaret Hornbaker  
 Mr. and Mrs. Paul Hosoda  
 Mr. and Mrs. Win Hovey  
 Mr. and Mrs. Roderick B. Howard  
 Mr. and Mrs. Jack Howard  
 Mr. Frank W. Hughes and Ms. Paula H. Diehr  
 Mr. and Mrs. Jim Hughes  
 Mr. and Mrs. George W. Hughes  
 Dr. William N. Hughes  
 Mr. Tim Hunkapiller and Ms. Cindy Ball  
 Mr. and Mrs. John W. Hunsaker  
 Dr. John F. Hutchinson and Dr. Maureen Marshall  
 Mrs. Otis D. Hyde  
 Mr. and Mrs. Joseph Iacolucci

Mr. Weldon Ihrig and Ms. Susan Knox  
 A. L. Ihry  
 Mr. and Mrs. Gordon Iles  
 Mr. James Inverarity  
 Mr. and Mrs. Jim Irwin  
 Mr. Franklin Istas  
 Ms. Jill Jackson and Dr. Lisa Reitzes  
 Ms. Margery J. Jacobi  
 Ms. Lynne Jacobsen and Mr. Dave Jacobsen  
 Mr. Speight Jenkins  
 Mr. Keith R. Johnson and Mrs. Patricia E. Crockett  
 Mr. and Mrs. Ernest A. Johnson  
 Mr. and Mrs. Ernest R. Johnson  
 Mr. and Mrs. Thomas O. Johnson  
 Mr. and Mrs. Richard I. Johnson  
 Donald L. and Dorothy H. Johnson  
 Mr. and Mrs. Spencer A. Johnson  
 Mr. and Mrs. Robert Johnson  
 Ms. Gail Joice  
 Mr. Stan Jonasson and Ms. Linda Jangaard  
 Mr. and Mrs. W. Bruce Jones, Jr.  
 Mr. and Mrs. Mitchell F. Jones  
 Ms. Sara Jones  
 Mr. and Mrs. Vincent K. Jones  
 Mr. and Mrs. Ed Joneschild  
 Mr. and Mrs. G. W. Joost  
 Mr. and Mrs. Mark V. Jordan  
 Dr. Robert H. Jungers and Dr. Joellen Lewtas Jungers  
 Mr. and Mrs. Erik Kaeding  
 Mr. and Mrs. Charles Kahle  
 Mr. and Mrs. Kim Kaiser  
 Mr. and Mrs. Gordon A. Kamisar  
 Mr. Harold H. Kawaguchi  
 Mr. Jon J. Kechejian and Ms. Sandy Schoolfield  
 Dr. and Mrs. Carleton A. Keck  
 Ms. Verlaire Keith-Miller and Mr. Norman Cohen  
 Mr. E. Peter Kelly and Dr. Liana Kelly  
 Dr. David Kerlick  
 Mr. and Mrs. Frank W. Kerr  
 Mr. and Mrs. Michael Kerschbaum  
 Patricia C. Kiefer  
 Ms. Charlotte Killien  
 Ms. Pia H. Kim  
 Mr. and Mrs. David E. King  
 Mrs. Joan M. King and Ms. Renée Thorngate  
 Mr. Larry R. Kingen  
 Mr. and Mrs. Charles J. Kippenhan  
 Mr. K. M. Kirkpatrick and Ms. Gihwa Hochberg  
 Mr. and Mrs. Edgar Kirsopp  
 Dr. and Mrs. Jack Kleinart  
 Dr. and Mrs. Paul W. Knoll  
 Mr. William Pattison Kogut and Ms. Ann Eure  
 Mr. and Mrs. Palmer D. Koon  
 Mr. and Mrs. Albert T. Koskie  
 Mr. and Mrs. Michael W. Krause  
 Dr. Paul W. Kravagna and Dr. Harold Sanford  
 Ms. Barbara Krekow  
 Ms. Kathy E. Kreps and Mr. Mark C. Wysoski  
 Dr. and Mrs. Morton Kroll  
 Dr. and Mrs. Howard Alan Krouse  
 Mr. James R. Kunz and Ms. Jean LaFollette Kunz  
 Mr. and Mrs. Hy Kurfirist  
 Ms. Marian E. Lackovich  
 Mr. and Mrs. Pablo F. Lambinico  
 Mr. and Mrs. Wayne Lamm  
 Mr. and Mrs. Peter Lancaster  
 Miss Renee C. Lang

Mr. Marc G. Larsen and Mrs. Claire Larsen  
 Alvhild M. Larson  
 Mr. and Mrs. David Lauter  
 Mr. and Mrs. John J. Law  
 Ms. Stacy Lawson and Mr. Steve Sarkowsky  
 Ms. Janis Laybourn and Mr. Gene Methven  
 Mr. and Mrs. Jonathan Lazarus  
 Dr. and Mrs. Bruce M. Leaman  
 Mr. Thomas Lee and Ms. Gretchen Dingman  
 Mr. and Mrs. Richard D. Lee  
 Mr. and Mrs. K. Claude Lee  
 Mr. and Mrs. Richard Leeds  
 Mr. and Mrs. Spencer Lehmann  
 Mr. and Mrs. Joseph Lein  
 Mr. and Mrs. Charles O. Lennstrom  
 Mrs. Delores D. Leonard and Ms. Laurel Leonard  
 Dr. Paul Edwin LeRoy  
 Dr. and Mrs. Richard D. Leshgold  
 Mr. Robert Levine  
 Ms. Arlene Levy  
 Marjorie Levy  
 Mr. David C. Lewis and Mr. Kent J. Lewis  
 Mr. and Mrs. Leroy Lewis, Jr.  
 Mrs. W. H. Lilly, Jr.  
 Mr. and Mrs. Stan Lindskog  
 Mrs. Donna Lipsky and Dr. Benjamin A. Lipsky  
 Mrs. Putnam Little and Mr. Blake Little  
 Mr. and Mrs. Chris Lobet  
 Dr. and Mrs. J. Pierre Loebel  
 Mr. and Mrs. Bruce C. Lorig  
 Ms. Beth Lottinville and Mr. Rane Lottinville  
 Mr. and Mrs. Richard W. Luce  
 Mr. and Mrs. Milt Lumpkin  
 Ms. Carole Lycett-Dent  
 Mr. Richard C. Lyga and Ms. Janie Wood  
 Mr. C. Gilbert Lynn and Mr. Richard Voves  
 Mr. and Mrs. James William Lyon, Jr.  
 Mr. and Mrs. Alan MacDonald  
 Mr. and Mrs. William S. MacGeorge  
 Mr. and Mrs. Walter H. MacGinitie  
 Ms. Janis M. Machala and Mr. David R. Stenberg  
 Mr. and Mrs. Rae Mackay  
 Dr. Carol MacLaren  
 Mr. Gary MacLeod  
 Linda Macs  
 Mr. and Mrs. Eric Magelssen  
 Ms. Sharon V. Maghie and Mr. John T. Barrett  
 Ms. Nikki Mahan and Mr. Mark Mahan  
 Ms. Eugenia Mak  
 Mr. and Mrs. Michal Makar  
 Mr. and Mrs. Scott Malatos  
 Mr. J. B. Malone and Ms. Pamela Driscoll  
 Dr. and Mrs. Ralph J. Malott  
 Mr. and Mrs. Robert Manger  
 Mr. Sally Mann  
 Mr. and Mrs. Philip P. Mann  
 Ms. Michelle M. Marchant and Mr. Daniel J. Hall  
 Mrs. Yaffa Maritz and Mr. Paul Maritz  
 Ms. Rosanne Marks  
 Mr. J. J. Marquardt  
 Mr. and Mrs. Louis G. Marsh  
 Ms. Grace M. Marshall  
 Ms. Janice Marsters  
 Dr. Laura S. Martin and Dr. Roderick F. Hume  
 Mr. and Mrs. George C. Martin  
 Mr. and Mrs. Don T. Martindale  
 Dr. and Mrs. Raymond Marty  
 Mr. and Mrs. Ben Masin

Mr. and Mrs. Scott Massey  
 Ms. Ruth W. Massinga  
 Mr. Kenneth Masters and Ms. Kara R. Masters  
 Ms. Gretchen Mathers  
 Mr. and Mrs. Roger W. Mauldin  
 Mr. and Mrs. Frank T. Maziariski  
 Dr. Myrene McAninch  
 Mr. and Mrs. D. M. McAusland  
 Mrs. William P. McCaffray, Jr.  
 Ms. Anne V. McClellan and Mr. Roger M. Tolbert  
 Mr. and Mrs. Richard M. McCool  
 Dr. Richard L. McCormick and Dr. Suzanne Lebsack  
 Ms. A. Carol McDaniel  
 Mark N. and Lillian C. McDermott  
 Dr. and Mrs. George McDonald  
 Mrs. Sally McDonough  
 Mrs. Elizabeth McFarland  
 Mr. and Mrs. Peter McFarney  
 Ms. Jean McIntosh  
 Mr. Carl McKnight and Ms. Tara McKnight  
 Mr. and Mrs. Arch L. McMahan  
 Mr. and Mrs. J. Richard McMichael  
 Doug and Thelma McTavish  
 Ms. Dorothea Mecklenburg  
 Mrs. Clare H. Meeker and Mr. Dan Grausz  
 Mrs. Joye Melby and Mr. Lynn L. Melby  
 Ms. Sarah E. Merner and Mr. Craig McKibben  
 Mr. and Mrs. Bryant F. Merrick  
 Dr. and Mrs. Eric S. Merrifield  
 Mr. and Mrs. Frederick S. Merritt  
 Ms. Susan Mersereau and Mr. Philip White  
 Ms. Leigh Metcalf  
 Ms. Barbara Metch  
 Mr. and Mrs. Carl R. Meurk  
 Mr. and Mrs. Henry A. Meyers  
 Mr. and Mrs. John A. Mikkelsen  
 Mary and Curt Mikkelsen  
 Mr. and Mrs. Bob Milam  
 Mrs. Louise P. Milby  
 Mr. Anthony R. Miles  
 Ms. Jean Miles  
 Mr. Charles N. Miller and Mrs. Tyna Jones Ashley-Miller  
 Ms. Gail Miller  
 Mr. and Mrs. Richard Miller  
 Mrs. Mary Lou Miller  
 Mr. and Mrs. Judith A. Miller  
 Mr. and Mrs. Charles K. Mills  
 Mr. and Mrs. Boris Mishel  
 Mr. and Mrs. Elliott Mittler  
 Mr. James Moceri  
 Ms. Carol Mohler and Ms. Hope Mohler  
 Mr. Bruce Molen and Mrs. Julie Molen  
 Jim and Sheila Molnar  
 Mr. and Mrs. Horst Momber  
 Mr. and Mrs. Philip Monroe  
 Mr. and Mrs. Frank H. Montgomery  
 Mr. and Mrs. Harry J. Moody  
 Suzanne and Tony Moon  
 Mr. and Mrs. Loyal Moore  
 Dr. and Mrs. Douglas Morell  
 Mr. and Mrs. Don K. Morford  
 Mrs. Grace Noble Morgan  
 Ms. Cricket Morgan and Mr. Robert Holtz  
 Ms. Ann A. Morris  
 Dr. and Mrs. Lucien E. Morris  
 Ms. Daphne Morris  
 Ms. Margaret D. Morrison  
 Mrs. George J. Morry  
 Mrs. Susan Moss

Mr. Richard Moulden  
 Mr. and Mrs. Jimi Mudd  
 Ms. Laura Ellen Muglia  
 Dr. and Mrs. Marr Mullen  
 Ms. Sheila Mulligan and Mr. Paul Williams  
 Mr. and Mrs. J. Shan Mullin  
 Mr. and Mrs. Michael Mulvihill  
 Mr. and Mrs. Victor A. Munsen  
 Ms. Catherine Murphy  
 Ms. Lizzie Myers and Mr. Gregory Wright  
 Dr. Helen Nagy and Dr. Eric W. Lindgren  
 Ms. Kemi Nakabayashi  
 Dr. Richard L. McCormick and Dr. Suzanne Lebsack  
 Mr. and Mrs. Louis Nelson  
 Dr. and Mrs. James A. Nelson  
 Mr. and Mrs. David Neri  
 Dr. and Mrs. George McDonald  
 Dr. and Mrs. Eugene Newall  
 Ms. Doris Newland  
 Dr. and Mrs. Nichols  
 Mrs. Ann L. Nieder and Ms. J. Nieder  
 Mr. Mark Nielsen and Ms. Mary Peterson  
 Mr. Bruce Niermeyer and Ms. Amy Carpenter  
 Mr. and Mrs. Roger A. Niva  
 Dr. Catherine Nobis and Mr. R. Michael Crill  
 Ms. Nancy Nordhoff and Ms. Lynn Hays  
 Dr. and Mrs. Alvin H. Novack  
 Dr. and Mrs. L. Charles Novak  
 Ms. Sarah Novotny and Mr. John Kintz  
 Mr. Micah Nutt and Ms. Patricia Ferrell  
 Dr. and Mrs. Kevin Douglas O'Brien  
 Mr. Michael J. O'Connell and Ms. Theresa Taggart  
 Mr. and Mrs. James O'Neil  
 Mr. and Mrs. Jim R. Odom  
 Mr. and Mrs. Bryan T. Ogden  
 Mrs. Kathleen B. Ogle  
 Mr. and Mrs. Henry A. Meyers  
 Ms. Carole Okamoto  
 Dr. and Mrs. Bruce Olson  
 Mr. and Mrs. Donald A. Olson  
 Dr. Steven Olswang and Dr. Lesley Olswang  
 Ms. Eleanor Orth  
 Mr. David H. Oswald and Ms. Anna Oswald  
 Mr. Michael N. Otani  
 Ms. Dorothy M. Owens  
 Mr. and Mrs. James Owens  
 Mr. and Mrs. Philip S. Padelford  
 Ms. Lisa Painter and Mrs. Jeanne Clendenon  
 Mr. and Mrs. William Papesch  
 Ms. Katherine Parish and Mr. David Parish  
 Chris Park and Pascal Storck  
 Mr. and Mrs. William Parzybok, Jr.  
 Ms. Maxine Patrick  
 Mr. and Mrs. William R. Payden  
 Ms. Joan D. Payne  
 Mr. Lee W. Pearl and Mrs. Elizabeth Pearl  
 Mr. and Mrs. Donald K. Perinchief  
 Mr. Thornton A. Perry  
 Mrs. Mina B. Person  
 Dr. and Mrs. William A. Peterson  
 Dr. and Mrs. Louis D. Peterson  
 Dr. and Mrs. Charles N. Petty  
 Ms. Connie Phelps  
 Mrs. Samuel W. Philbrick  
 Mr. and Mrs. James Phillips  
 Ms. Miriam Pierce  
 Ms. Dana Pigott  
 Mr. and Mrs. Fred Pilkington  
 Mrs. Roland D. Pinkham  
 Dr. and Mrs. Michael Pittier  
 Ms. Karen Place and Mr. Barry Drost  
 Mr. and Mrs. Walter Plimpton

# DONORS to the SEATTLE ART MUSEUM

July 1, 2000–June 30, 2001

Mrs. Clifford E. Plouff  
 Ms. Nancy C. Plunkett and Dr. Peter D. Londborg  
 Mr. Michael Podlin  
 Mr. and Mrs. Paul M. Poliak  
 Ms. Cintra Pollack  
 Mr. and Mrs. Brian Pollack  
 Mr. Bruce K. Pollock  
 Cheryl L. Pope  
 Ms. Katherine Postell  
 Ms. Dominique Posy and Mr. James Kraft  
 Mr. and Mrs. Lee M. Pratt  
 Dr. and Mrs. Tom Preston  
 Mr. and Mrs. John R. Price  
 Ms. Shirley Shashich Price  
 Mr. and Mrs. Llewellyn G. Pritchard  
 Mr. and Mrs. David Prongay  
 Mrs. Robert A. Purdue  
 Ms. Anita Purdy  
 Mr. and Mrs. Bruce Pym  
 Dana Quitslund and Nancy Quitslund  
 Leigh and Louise Rabel  
 Mr. and Mrs. Colin W. Radford  
 Mr. and Ms. John Radovich  
 Mr. and Mrs. Lawrence B. Ransom  
 Dr. and Mrs. Charles K. Ray  
 Mr. Glenn Rebne and Mrs. Patty Rebne  
 Mr. Jerry Reed  
 Ms. Esther M. Reese  
 Mr. and Mrs. William C. Rehder  
 Otto Reinert and Pat Hurshell-Reinert  
 Dr. and Mrs. Douglas O. Reudink  
 Mr. and Mrs. Richard Rhodes  
 Mr. and Mrs. Curtis A. Rhodes  
 Mr. and Mrs. Steve Rice  
 Mr. and Mrs. Dan Rice  
 Mr. and Mrs. Michael P. Richardson  
 Mr. Douglas Richardson and Ms. Diana Phillips  
 Mr. and Mrs. Don Ricketts  
 Mr. and Mrs. Ed Ringness  
 Chet Robachinski and Gerald Slipman  
 Mrs. Floyd M. Robbins  
 Mr. and Mrs. Richard J. Robbins  
 Mr. and Mrs. William S. Roberts  
 Mr. and Mrs. Hank Robinett  
 Mr. and Mrs. Bert Robins  
 Mr. Scott G. Robinson and Ms. Sally J. Martin  
 Mrs. Nancy P. Rodgers and Mr. Jack Rodgers  
 Mr. James S. Rogers and Ms. Theresa M. Rogers  
 Dr. and Mrs. Terry R. Rogers  
 Mr. and Mrs. John Rohrer  
 Mrs. Janet Rooks  
 Dr. Donald L. Rooks  
 Mrs. Russell Ross  
 Mr. Stephen M. Rothrock and Ms. Tessa Keating  
 Mr. and Mrs. Dale Roundy  
 Mr. David Rude  
 Mr. and Mrs. Jay Rumwell  
 Mr. and Mrs. Casey Runde  
 Mr. and Mrs. James M. Russo  
 Dr. and Mrs. Wallace E. Rutherford  
 Mr. and Mrs. Vernon B. Rutledge  
 Ms. Diana Ryesky and Mr. Gerald J. Delay  
 Ms. Elizabeth A. Ryll and Mr. Richard Stead  
 Mr. and Mrs. John F. Scia  
 Mrs. Gertrude B. Salomon  
 Dr. and Mrs. Werner E. Samson  
 Mrs. Virginia Samuelson  
 Mr. and Mrs. Donald L. Sander  
 David and Barbara Sando  
 Ms. Martha Sands and Mr. Don Sands

B. L. Saunders and C. M. Saunders  
 Dr. S. Lennart Schenck  
 Mr. Robert Schenet and Ms. Betty Scott  
 Mr. Robert Schenkkan  
 Mr. William Schilb and Ms. Judith Jance  
 Mr. and Mrs. Marlo V. Schmidt  
 Mr. Harry H. Schneider and Ms. Gail P. Runnfeldt  
 Dr. and Mrs. Jim Schneider  
 Mr. and Mrs. Jordan Schnitzer  
 Mr. Tell C. Schreiber and Ms. Osa Bogren  
 Mr. and Mrs. George Schuchart  
 Mr. and Mrs. Robert Schuessler  
 Mr. and Mrs. Patrick J. Schultheis  
 Mr. K. D. Schuyler and Ms. Joyce Schmidt  
 Mr. and Mrs. Robert L. Schwartz  
 Dr. and Mrs. Maurice Schwarz  
 Mr. Gerard Schwarz and Mrs. Jody Schwarz  
 Diane and Jonathan Schwarz  
 Mr. Bruce Schwarze and Ms. Suzanne Shema  
 Mr. Bill Seach and Ms. Nancy Worsam  
 Ms. Patricia Sears  
 Mr. and Mrs. Donald F. Seaton, Jr.  
 Charyl K. and Earl Sedlik  
 Ms. Elaine Sells  
 Ms. Nancy Sensenbrenner  
 Ms. Jeanne Serrill  
 Mr. and Mrs. Douglas J. Shaeffer  
 Ms. Karen L. Shaffer and Ms. Mari McBurney  
 Mr. and Mrs. David Sharp  
 Mr. and Mrs. M. D. Sharrard  
 Mr. Rob Shiras  
 Dr. and Mrs. Denis S. Short  
 Mr. and Mrs. Richard Shrader  
 Mr. and Mrs. Robert Shrewsbury II  
 Mr. and Mrs. Leonard Shulman  
 Mr. Buffy Shutt and Ms. Kathy Jones  
 Ms. Thomas C. Sias  
 Mr. and Mrs. Arthur Siegal  
 Mrs. Harry M. Simmons  
 Mr. and Mrs. Douglas Simonson  
 Ms. Evelyn Simpson  
 Mr. and Mrs. Larry W. Sisson  
 Mr. Charles P. Sitkin  
 Mr. Thomas Skerritt and Ms. Julie Tokashiki  
 Mr. and Mrs. Larry L. Sliger  
 Mr. Stu Smailes  
 Mr. Andrew Smith and Ms. Judith Handman  
 Ms. Helen Louise Smith  
 Mr. and Mrs. James M. Smith  
 Ms. LaVonne Smith  
 Ms. Mary Snapp  
 Ms. Kathy L. Snowden  
 Ms. Staci E. Snyder  
 Dr. and Mrs. Hugh C. Sobottka  
 Mr. Frank W. Soderling and Ms. Jan Soderling  
 Mrs. Olite S. Solon  
 Mr. and Mrs. Leroy Soper  
 Mr. Bill Sornsin  
 Dr. and Mrs. David H. Spain  
 Ms. Sonny Spearman  
 Mr. and Mrs. Robert Spector  
 Michael D. and Wendy Spektor  
 Mr. and Mrs. Robert Spencer  
 Mr. Joel Spiegel and Ms. Karen Van Dusen  
 Ms. Sandra Spurlock and Mr. William Gohde  
 Mr. Bob St. Clair and Mrs. Julie St. Clair  
 Mr. and Mrs. William Staley, Jr.  
 Mr. Robert H. Stallcop and Ms. Laura A. Capili  
 Ms. Janet Stanley and Mr. Peter Stanley  
 Mary Jo Stansbury and Michael Stansbury  
 Mr. Charles Stempler and Ms. Sally McKenzie  
 Mr. and Mrs. James D. Stephens, Jr.

Ms. Mary Stevens and Mr. John Akin  
 Mr. and Mrs. Allan E. Still  
 Ms. Linda Stone  
 Mrs. Sara E. Stoppels  
 Mr. and Mrs. Sainsbury L. Strack  
 Mr. and Mrs. Ray Strand  
 Mr. Gordon C. Strand  
 Mr. and Mrs. Howard T. Strickler  
 Mr. and Mrs. Bart Stroupe  
 Mr. and Mrs. Machiko Sugiyama  
 Ms. Jean Sullivan and Mr. Paul Bauck  
 Daniel and Susan Sullivan  
 Ms. Linda K. Suyama  
 Scott and Ally Svenson  
 Mr. and Mrs. Duane Swank  
 Mr. and Mrs. Gerald R. Swanson  
 G. E. Swartley  
 Mr. and Mrs. Bobby Takatsuka  
 Mary Kay Talbot and David Talbot  
 Ms. Helen Tall  
 Dr. and Mrs. Lee Talner  
 Dr. and Mrs. Koray Tanfer  
 The Very Reverend Robert V. Taylor\*  
 Lore and Henry Tenckhoff  
 Ms. Victoria Terao  
 Mr. and Mrs. David J. Thacher  
 Dr. Michael P. Theisen and R. S. Jones  
 Ms. Mary Lou Thomas  
 Mr. and Mrs. Jack Thompson  
 Mr. and Mrs. David Jr.  
 Ms. Judy Tobin and Mr. Michael Baker  
 Mr. and Mrs. Harry L. Tolen  
 Mr. and Mrs. Paul A. Toliver  
 Dr. and Mrs. Michael D. Towers  
 Mr. and Mrs. Steve Trainer  
 Mr. and Mrs. Irwin L. Treiger  
 Mr. and Mrs. Edward Trimakas  
 Ms. Janet Tupper  
 Thurston and Sharon Twigg-Smith  
 Mr. Nicholas J. Utzinger and Mr. John R. Rochford  
 Ms. Lorraine W. Vagner  
 Mr. and Mrs. Todd Valentine  
 Mr. and Mrs. Edward J. Van Mason  
 Dr. and Mrs. A. B. Van Rennes  
 Dr. and Mrs. Pieter Vandermeulen  
 Ms. Nancy Vann  
 Ms. Jennifer Varey and Mr. David Murphy  
 Mr. Theodore Vaughn and Ms. Sandra Wallace  
 Ms. Lisa Viereck and Ms. Mona Viereck  
 Mr. and Mrs. Arthur M. Vogel  
 Mr. Peter J. Vogt and Ms. Ali Morris  
 Ms. Deidra Wager  
 Mr. and Mrs. Robert Wahbe  
 Mr. W. Warren Walker and Ms. Dorothy Morehouse  
 Dr. Marguerite L. Walker and Ms. Dorothy Trott  
 Dr. and Mrs. John H. Walker  
 Ms. Marianne Wall and Mr. Ted Hurwitz  
 Mr. George Wallerstein and Dr. Julie Lutz  
 Ms. Elizabeth Walters  
 Mr. James M. Walters and Dr. Susan S. Walters  
 Ms. Jane Wandel Nelson and Ms. Sierra K. Nelson  
 Harry and Mary Wappler  
 Mr. and Mrs. John W. Warjone  
 Mr. Todd Warmington and Ms. Julie North  
 Mr. and Mrs. Todd Warren  
 Ms. Lois A. Watford and Mr. Greg Moore  
 Mr. and Mrs. Craig M. Watjen  
 Mrs. Harry W. Watson

Ms. Shelley Watson  
 Mr. James J. Wayrynen and Dr. Carolyn M. Paradise  
 Mr. Christopher Webb  
 Ms. Marie D. Webster  
 Dr. and Mrs. Charles E. Weems  
 Paul L. Weiden and Marty Weiden  
 Mr. and Mrs. Andrew B. Weiner  
 Mr. and Mrs. Fred Welk  
 Mr. and Mrs. Dean Weller  
 Mrs. Robert Wells  
 Mr. and Mrs. Daryl Welsh  
 Ms. Jan Welsh and Mr. Charles Welsh  
 Ms. Beverly J. Welter  
 Mrs. Estelle A. Wertheimer  
 Mr. Charles West and Dr. Mark Veigl  
 Ms. Barbara West  
 The West Seattle Art Club  
 Mr. and Mrs. Greg White  
 Mrs. Thomas T. White  
 Dr. and Mrs. William F. Whitfield, Jr.  
 Mr. and Mrs. Myron W. Whitney  
 Ms. Margaret A. Whitney  
 Mr. Theodore M. Wight and Mrs. Connie Wight  
 Mr. and Mrs. John Wilcox  
 Mr. and Mrs. David W. Wiley  
 Mr. and Mrs. Donald Williams  
 Dr. Allan Williams and Ms. Susanne Keller  
 Mr. and Mrs. J. Vernon Williams  
 Miss Shannon R. Williams  
 Mrs. James I. Williamson  
 Mr. and Mrs. John R. Willingham  
 Dr. and Mrs. Warren Wilson  
 Mr. and Mrs. Warren Wilson  
 Mr. Dennis Wilson and Ms. Carol Gabrielson  
 Mr. and Mrs. Robert F. Wilson  
 Ms. Lucinda Wilson  
 Mr. and Mrs. William L. Wilton  
 Ms. Janice Winemiller  
 Mr. and Mrs. Robert Winquist  
 Mr. Bob Winsor and Ms. Valerie Yockey  
 Mr. and Mrs. Philip Wohlstetter  
 Mrs. and Mr. Dewitt Wold  
 Ms. Sally Wolf  
 Ms. Vi Wolff  
 Mr. Stewart Wong and Mr. Thomas Harrington  
 Ms. Flora J. Wong and Ms. Bonnie Jang  
 Mr. and Mrs. Stephen Wong  
 Ms. Brenda K. Wood  
 Ms. Catherine Wood Yamin and Mr. John Yamin  
 Mr. and Mrs. V. L. Woolston  
 Mr. Christopher Worsley and Ms. Christi A. Bailey  
 Mrs. Myron A. Wright  
 Mr. and Mrs. Jay W. Wright  
 Mr. and Mrs. Steven J. Wright  
 Ms. Gayle Yamamoto and Ms. Tia Johnson  
 Mr. and Mrs. Gary Y. S. Yim  
 Mr. and Mrs. Don R. Yockey  
 Ms. Deanna D. Young  
 Ms. Caroline Goodrich Young and Mr. Chris Young  
 Dr. Sherwood F. Young and Ms. Carolyn Hart  
 Ms. Erin Younger and Mr. Ed Liebow  
 Mrs. Kay Zatine  
 Mr. William F. Zauche  
 Doug and Pat Zuberhuhler  
 Mr. and Mrs. Gerard Zytnicki

\*Denotes deceased

## CORPORATE PARTNERS

### DIAMOND CIRCLE (\$100,000 AND ABOVE)

The Boeing Company  
 KING 5 Television  
 Microsoft Corporation  
 Northwest Airlines  
*The Seattle Post-Intelligencer*  
*The Seattle Times*

### EMERALD CIRCLE (\$50,000 TO \$99,999)

AT&T Wireless Services  
 KPLU-NPR  
 Lakeside Industries  
 U.S. Bank  
 Bessemer Trust Company, N.A.  
 BRAVO  
 Christie's  
 The Citibank Private Bank  
 The Commerce Bank of Washington  
 Preston Gates & Ellis LLP

### PLATINUM CIRCLE (\$10,000 TO \$24,999)

Barrier Motors  
 Canandaigua Wine Company Inc.  
 Citysearch.Seattle.com  
 Cole & Weber  
 Credit Suisse First Boston  
 Goldman, Sachs & Co.  
 KeyBank  
 Northern Trust  
 Port of Seattle  
 Puget Sound Audi Dealers  
 Puget Sound Energy  
 SAFECO Insurance Companies  
 Sedgwick Rd.  
 Sotheby's  
 United Airlines  
 Verizon Communications  
 Washington Mutual

### GOLD CIRCLE (\$5,000 TO \$9,999)

Bank of America  
 Horvitz Newspapers, Inc.  
 Huling Bros. Auto Center  
 New Belgium Brewing Company  
 Ragen MacKenzie Inc.  
*Seattle Homes and Lifestyles*  
*The Seattle Weekly*  
 Unocal Corporation

### SILVER CIRCLE (\$2,500 TO \$4,999)

Quality Food Centers, Inc.  
 See's Candies, Inc.  
 The Creative Group  
 Turner Construction Company  
 Valco Graphics, Inc.

### BRONZE CIRCLE (\$1,000 TO \$2,499)

Abbey Party Rents of Wa., Inc.  
 The Ackerley Group  
 Acordia  
 Arthur Andersen  
 Ben Bridge Jewelers Inc.  
 Bennett Bigelow & Leedom, P.S.  
 Christensen O'Connor Johnson Kindness PLLC  
 Corbis  
 Coughlin Porter Lundeen, Inc.  
 Cozen & O'Connor

Dain Rauscher  
 Davis Wright Tremaine LLP  
 Diamond Parking Inc.  
 Evian  
 Focal Communications  
 Foss Maritime Company  
 Foster Pepper & Sheffelman PLLC  
 Glaxo Wellcome Inc.  
 Hoffman Construction  
 Hugh G. Goldsmith and Associates, Inc.  
 Immunex Corporation  
 ING Northern Life  
 KPMG LLP  
 Lane Powell Spears Lubersky LLP  
 Liberty Equipment & Supply Company  
 Merrill Lynch  
 National Frozen Foods Corp.  
 Nissho Iwai American Corp.  
 Northwestern Trust  
 PACCAR Inc.  
 PaineWebber, Inc.  
 Perkins Coie LLP  
 Photozone.com  
*Puget Sound Business Journal*  
 R. D. Merrill Company  
 Riddell Williams P.S.  
 Seed Intellectual Property Law Group PLLC  
 Segale Business Park  
 Sheraton Seattle Hotel & Towers  
 Skyway Luggage Company  
 The Perrier Group  
 The Walter Group, Inc.  
 Ticketmaster Northwest  
 Townsend and Townsend and Crew LLP  
 Unico Properties, Inc.  
 Union Bank of California  
 Van Waters & Rogers Inc.  
 Wells Fargo Bank  
 Woods & Associates  
 Wright Runstad & Company  
 WRQ

### COPPER CIRCLE (\$500 TO \$999)

Art Institute of Seattle  
 Associated Students of Seattle Pacific University  
 Atlantic Mutual Insurance Co.  
 Builders' Hardware & Supply Co., Inc.  
 Capital Industries, Inc.  
 Carosso International Inc.  
 Chubb Group of Insurance Companies  
 Classical KING FM 98.1  
 Crowne Plaza Seattle  
 Dorsey & Whitney LLP  
 Ferguson Construction  
 Gary Bocz Hair Design  
 GE Financial Assurance  
 Girvin Inc.  
 Glazer's Camera Supply  
 Gordon, Thomas, Honeywell, Malanca, Peterson & Daheim PLLC  
 Gores & Blais  
 Guy Carpenter & Company Inc.  
 Hart Crowser, Inc.  
 Hillis Clark Martin & Peterson  
 Home Owners Club  
 HomeStreet Bank  
 Honeychurch Antiques  
 Honeywell  
 Jones & Jones Architects and Landscape Architects  
 K & L Distributors Inc.  
 Kunath Karren Rinne & Atkin, Inc.  
 Laird Norton Trust Company

Lanoga Corporation  
 Lease Crutcher Lewis  
 Marten Brown Inc.  
 Martin Nelson & Co. Inc.  
 Matthew G. Norton Co.  
 McAdams Wright Ragen, Inc.  
 Media Passage  
 Mikkelborg, Broz, Wells & Fryer PLLC  
 Milliman & Robertson, Inc.  
 MulvannyG2 Architecture  
 NBBJ  
 NC Machinery Co.  
 NW Federal Credit Union  
 Olson Sundberg Kundig Allen Architects  
 Onyx Software  
 Pacific Northwest Bank  
 Plasteel Frames, Inc.  
 PMA Direct Marketing  
 Rainier Investment Mgmt, Inc.  
 Seattle Steam Company  
 Stael Rives LLP  
 Summit Law Group PLLC  
 Swenson Say Faget, Inc.  
 T+ / KCM, Inc.  
 The Production Network  
 Think New Ideas, Inc.  
 Tillicum Village & Tours, Inc.  
 Totem Ocean Trailer Express, Inc.  
 Towers Perrin  
 Tucker Alan Inc.  
 Walt Disney Internet Group  
 Washington Federal Savings  
 Waste Management, Inc.  
 Western Washington Beverage  
 Wild Ginger Asian Restaurant & Satay Bar  
 William Traver Gallery  
 World Financial News Network  
 Zimmer Gunsul Frasca Partnership

## IN-KIND SUPPORT GENERAL MUSEUM SUPPORT

Alice Bear  
 American Flamecoat  
 AT&T Wireless Services  
 Bruce Kriegman  
 Columbia Winery  
 Crusty Loaf  
 Dilettante Chocolates  
 Evian  
 Great Wall Mall Development  
 Half Price Books  
 KEXP  
 KING 5 Television  
 KPLU 88.5  
 Microsoft Corporation  
 Northland Cable Advertising  
 Pacific Northwest Ballet  
*Puget Sound Business Journal*  
 Sedgwick Rd.  
 Starbucks Coffee Company  
 Theiline Cramer  
 Tony's Coffee and Teas, Inc.  
 Trader Joe's  
 Valco Graphics, Inc.  
 Weyerhaeuser Company

## GARDENS OF ART

Alameda Orchids  
 Alex Baker  
 Argyle Wines  
 Bella Rugosa  
 Christiansons  
 Columbia Winery  
 Drees Home Design

Evian  
 Fiori Floral & Design  
 Fleurish  
 Galleries of Neiman Marcus  
 Hayes Nursery  
 Lucca Statuary  
 Martha Harris  
 McCallum Envelope  
 Megan Olander Florals  
 Pickity Patch  
 Ravenna Gardens  
 Susan Foster  
 NW Federal Credit Union  
 United Parking Service  
 US Clubhouse  
 Wells Medinal Nursery

## MASQUERADE BALL

Columbia Winery  
 Evian  
 Full Sail Brewing Company  
 103.7 The Mountain  
 Pearl Vodka  
 Photozone.com  
*The Seattle Weekly*  
 Typhoon

## ART OF JAZZ

Fandrich & Sons Pianos  
 Wild Ginger

## THURSDAY AFTER HOURS

KEXP  
 103.7 The Mountain  
*The Seattle Weekly*

## NORDSTROM DESIGNER PREVIEW

Argyle Wines  
 Columbia Winery  
 Consolidated Restaurants  
 KLSY  
 KWJZ  
 Northland Cable Advertising  
 103.7 The Mountain  
 Redhook Brewery  
 Star 101.5FM  
 Talking Rain  
 Tully's  
 United Parking Service

## WYCKOFF TEACHER RESOURCE CENTER

James Simecek  
 Runhui Xu  
 Stephanie Lile  
 Verizon Wireless

## EXHIBITION SUPPORT

*Creating Perfection: Shaker Objects and Their Affinities*  
*Seattle Homes & Lifestyles*

## John Singer Sargent

KING 5 Television  
*The Seattle Post-Intelligencer*

## Treasures from a Lost Civilization: Ancient Chinese Art from Sichuan

Hauppauge Computer Works, Inc.  
 KING 5 Television  
 Northwest Airlines  
 The Boeing Company  
*The Seattle Times*

## FOUNDATION AND GOVERNMENT SUPPORT

The following foundations and government agencies have contributed generously to the Seattle Art Museum this year.

### \$250,000 AND ABOVE

The Andrew W. Mellon Foundation  
National Endowment for the Humanities  
E. Rhodes and Leona B. Carpenter Foundation  
Wallace-Reader's Digest Fund  
Corporate Council for the Arts/ARTSFUND

### \$100,000 TO \$250,000

The Henry Luce Foundation, Inc.  
PONCHO (Patrons of Northwest Civic, Cultural and Charitable Organizations)  
Robert Lehman Foundation, Inc.  
King County Arts Commission  
National Endowment for the Arts  
Seattle Arts Commission  
The Rockefeller Foundation  
Institute of Museum and Library Services  
The Foster Foundation

### \$25,000 TO \$100,000

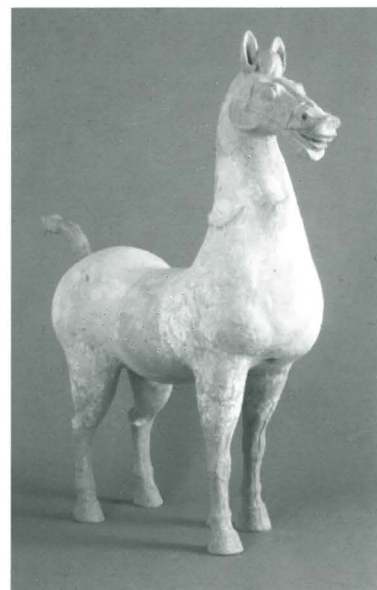
Washington State Arts Commission  
Norman Archibald Charitable Foundation  
Blakemore Foundation  
The Allen Foundation for the Arts  
The Seattle Foundation  
Korea Foundation

### \$25,000 AND UNDER

The Clowes Fund, Inc.  
William E. Weiss Foundation  
Anonymous  
The Kress Foundation  
Seattle Rotary Service Foundation

## WALLACE-READER'S DIGEST FUND AWARD

The Wallace-Reader's Digest Fund has recognized and awarded the Seattle Art Museum's dual mission of maintaining a high standard of artistic quality and engaging a broader audience with a prestigious grant. This four-year award funds a SAM initiative called *Deepening the Dialogue*, which seeks to increase museum participation by diverse ethnicities throughout the institution, from audience to volunteers, staff and trustees.



Horse, China,  
Han dynasty (24–220 A.D.)  
Terracotta,  
50 x 46 x 13 1/2 in.  
Gift of Iver M. Nelson, Jr.,  
2000.154



Rosie Nangala Fleming, Australian Aboriginal (Alice Springs), b. ca. 1930. *Three Dreamings*, 1993, acrylic on linen, 46 7/16 x 71 1/4 in., Gift of Margaret Levi and Robert Kaplan, 2000.156, photo: Paul Macapia

## PLANNED GIVING LEGACY CLUB

Anonymous (9)  
Mr. and Mrs. James E. Allison  
Mr. Robert M. Arnold  
Mr. and Mrs. Thomas W. Barwick  
Ms. Esther A. Chrisman  
Ms. Christi A. Clark  
Ms. Cecilia J. Cochran  
Dr. Lou Colwell and Mr. R. Bruce Colwell, Jr.  
Mr. Edward L. Cushman  
Dr. and Mrs. David R. Davis  
Mr. and Mrs. Brewster C. Denny  
Mr. Robert B. Dootson  
Mrs. Thelma S. Dorsey  
Ms. Ann Eddy  
Mr. Dan Eskenazi and Ms. Diane Leveque  
Mr. and Mrs. Frank E. Everett, Jr.  
Mrs. Kenneth R. Fisher  
Mrs. Margery S. Friedlander  
Mrs. Roberta Gadberry  
Dr. Mary Galloway and Mr. David Galloway  
Ms. P. Raaze Garrison  
Mrs. Anne L. Gerber  
Mr. H. T. Gladwin  
Mr. and Mrs. Ulf Goranson  
Mr. and Mrs. Max Gurvich  
Mr. Tedric C. Haggerty  
Mr. Herbert B. Hall  
Mr. and Mrs. Glenn L. Harrington  
Mr. Frank E. Hart  
Mr. and Mrs. John H. Hauberg  
Ms. Yvonne T. Humber  
Mr. James E. Hussey  
Ms. Julia G. Johansen  
Mr. and Mrs. Norman J. Johnston  
Mr. Robert D. Kaplan and Ms. Margaret Levi

Mrs. Walter Lowen  
Mr. Judsen Marquardt  
Mr. Craig E. Mason  
Mrs. Jean Milnor  
Mr. Elliot V. Mock  
Drs. Elaine Monsen and R. Joseph Monsen  
Mr. and Mrs. Mel O'Neal  
Mr. and Mrs. Bill Parsons  
Mrs. George Parsons  
Mrs. James K. Penfield  
Mr. and Mrs. A. William Pratt  
Mr. and Mrs. Brooks G. Ragen  
Mr. and Mrs. Rex Rathbun  
Mr. William Rathbun  
Mrs. John S. Robinson  
Ms. Phyllis Rosen and Mr. Andreas Wichert  
Mr. and Mrs. Sam Rubinstein  
Mr. and Mrs. Allen V. Salsbury  
Dr. and Mrs. John F. Shaw  
Mr. Robert M. Shields  
Mr. Howard Silverman  
Mr. and Mrs. Langdon S. Simons, Jr.  
Mrs. David E. Skinner  
Ms. Jamie Solo  
Mrs. David Sprague  
Mr. and Mrs. William K. Street  
Mrs. Margaret P. Taylor  
Mr. and Mrs. Robert W. Thomas  
Mr. and Mrs. Bill Thorness  
Mr. and Mrs. Dean D. Thornton  
Mrs. Ruth Trubner  
Dr. and Mrs. John H. Walker  
Mr. and Mrs. Bagley Wright

## BEQUESTS

Marjorie Edris  
Erma Erickson  
Elizabeth Hansmann  
Catherine Zesbaugh

## STAFF

As of June 30, 2001

### DIRECTOR'S DIVISION

*The Illsley Ball Nordstrom Director*  
Mimi Gardner Gates

*Director of Community Relations*  
Victoria Moreland

*Government, Community, and Board Relations Officer*  
Jennifer Aydelott

*Executive Assistant to the Director*  
Laura Lutz

*Interns*  
Colleen Terry  
Rim Sim  
Bryttnee McKinney

*CAPITAL PROJECTS*  
*Director of Capital Projects*  
Christopher Rogers

*Capital Projects Coordinator*  
Megan Kagel

*CONSERVATION*  
*Chief Paintings Conservator*  
Nicholas Dorman

*Collections Care Manager*  
Julia Creahan

*Conservation Technician*  
Marta Pinto-Llorca

*Archival Technician*  
Barbara Robertson

*INFORMATION TECHNOLOGY*  
*Chief Technology Officer*  
David Lotz

*Information Technology Manager*  
Dennis Milich

*Web Site Designer*  
Carrie Adams

*Technical Support Specialist*  
Johnathan Bowler

*Software Engineer/Web Programmer*  
Traci Cole

*Analyst*  
Carol Mack

### CURATORIAL DIVISION

*ADMINISTRATION*  
*Manager of Exhibitions and Curatorial Publications*  
Zora Hutlova Foy

*Exhibitions and Collections Coordinator*  
Susan Bartlett

*Research Associate for Curatorial Projects*  
Susan Edwards

*Administrative Assistant*  
Liz Andres

*MODERN ART*  
*Interim Deputy Director of Art*  
Chiyo Ishikawa

*Assistant Curator of Modern Art*  
Tara Reddy Young

*ART OF AFRICA AND OCEANIA*  
*Curator of African and Oceanic Art*  
Pamela McClusky

*Curatorial Assistant*  
Carol Hermer

*ASIAN ART*  
*Guest Curator of Japanese Art*  
Michiyo Morioka

*The Foster Foundation Curator of Chinese Art*  
Jay Xu

*Curatorial Assistant*  
Mary Hirsch

*Administrative Assistant*  
Elizabeth Bradley

*Blakemore Interns*  
Robin Lin  
Tamaki Maeda  
Julia Elizabeth Sapin  
John Szostak

*DECORATIVE ARTS*  
*The Ruth J. Nutt Curator of Decorative Arts*  
Julie Emerson

*Curatorial Assistant*  
Ann Wagner

*EUROPEAN PAINTINGS*  
*Senior Curator and Curator of European Painting and Sculpture*  
Chiyo Ishikawa

*EDUCATION DIVISION*  
*The Kayla Skinner Director of Education and Public Programs*  
Jill Rullkoetter

*Education Coordinator*  
Esther Alabi

*ADULT PUBLIC PROGRAMS AND ART COUNCILS*  
*Adult Public Programs and Art Councils Manager*  
Paula McArdle

*Sichuan Symposium Administrative Assistant*  
Lynn Lee

*ART LIBRARIES*  
*Librarian*  
Elizabeth defato

*Assistant Librarian, SAAM*  
Jan Hwang

*AUDIO-VISUAL SERVICES*  
*Audio-Visual Manager*  
Jamie Andrews

*Audio-Visual Technicians*  
Greg D'Elia  
Maxel Keene  
Michael Ricciardi  
Boyd Richard  
Paul Rucker

*YOUTH AND FAMILY PROGRAMS*  
*Manager of Youth and Family Programs*  
Beverly Harding

*Artist in Residence*  
Denae Simone Drake

*Summer Camp Coordinator*  
Sandra Toro Martell

*Youth Programs Coordinator*  
Cyra Levenson

*Summer Camp Instructors*  
Jamila Dunn  
Janet Fagan-Smith  
Linda Mayo  
Jennifer McClain

*FILM PROGRAM*  
*Film Program Manager*  
Greg Olson

*Film Projectionists*  
Peter Kerchinski  
Larry Price  
Robert Schulze  
Douglas Stewart

*RENTAL/SALES GALLERY*  
*Gallery Director*  
Barbara Shaiman

*Gallery Coordinator*  
Jody Bento

*Financial Coordinator*  
Stephanie Raddatz

*SCHOOL & TEACHER PROGRAMS*  
*Manager of School and Teacher Programs*  
Kathleen Peckham Allen

*School and Family Programs Assistant*  
Jennifer Ott

*Associate Museum Educator for Tours*  
Anne Pfeil

*Wyckoff Teacher Resource Center Coordinator*  
Jennifer Vary

*Tour Coordinator*  
Janice Wakefield

*SEATTLE ASIAN ART MUSEUM EDUCATION DEPARTMENT*  
*Senior Museum Educator*  
Sarah Loudon

*Blakemore Intern in Education*  
Joyce Chow

*Program Coordinator*  
Liza Israel

*Artist in Residence*  
Margaret Mackin

*Associate Museum Educator*  
Keith Takechi

*VOLUNTEER SERVICES*  
*Volunteer Manager*  
Margaret Huchting

*EXTERNAL AFFAIRS DIVISION*  
*Deputy Director for External Affairs*  
Maryann Jordan

*External Affairs Assistant*  
Kristina Server

*DEVELOPMENT*  
*Director of Development*  
Janet Labyak

*Development Assistant*  
Suzann Parker

*Major Gifts Assistant*  
Sarah Kleiner

*Premier Membership Manager*  
Tracy Sarich

*Annual Fund Manager*  
Heather Smith

*Membership Manager*  
Sarah Elswick

*Membership Assistant*  
Robert Potts

*Development Assistant*  
Sarah Walczyk

*Membership Processor*  
Alison MacLean

*Lead Membership Salesperson*  
Shannon Moore

*On-Site Membership Salespeople*  
Christianne Hauber  
Patty Hezel  
Debra Stevens

*Fundraising Events Manager*  
Andrea Burgess

*Corporate Relations Officer*  
Jill Robinson

*Corporate Relations Manager*  
Laura Bales

*Corporate Coordinator*  
Tiffany Tessada

*Development Officer—Grants and Foundation Relations*  
Laura Hopkins

*Grants Manager*  
Carol Mabbott

*Grants Assistant*  
Renee Watts

*Travel Coordinator*  
Carla Gifford

*PUBLIC RELATIONS*  
*Public Relations Manager*  
Linda Williams Rorem

*Public Relations Consultant*  
Melissa Mohlman

*Public and Community Relations Associate*  
Erika Rau

*Announcer*  
Paul Klein

**FACILITIES MARKETING**  
*Facilities Marketing Manager*  
John Ferguson

*Facilities Marketing Assistant*  
Suzanne Motheral

**MARKETING**  
*Director of Marketing*  
Ashley Fosberg

*Promotions/Web Site Manager*  
Christina DePaolo

*Proofreader/Program Guide Coordinator*  
Nicole Curry

*Marketing Assistant*  
Aimee Zawilski

*Graphic Designers*  
Lea McLean  
Bradley Mosher  
Anne Treadwell

**VISITORS SERVICES**  
*Admissions Manager*  
Jenny Sabin

*Assistant Admissions Manager*  
Amy Domres

*Box Office/Group Sales Coordinator*  
Dinah Bergstrom

*Admissions Representatives*  
Cheryll Bennett  
Erin McElliott  
Dana Josslin  
Bethany Paseman  
Bang Sun  
Bonnie Keenan  
Anii Lorenz  
Suzanne Motheral  
Alan Wright  
Heather Zahnow

**MUSEUM STORE**  
*Sales Manager*  
Brad Bigelow

*Assistant Manager*  
Charles Primus

*Store Bookkeeper*  
Sarah Crumb

*Buyer/Product Developer*  
Margaret Quigley

*Inventory/Stockroom Clerks*  
Michael Quigley

*Lead Sales Associate*  
Nell Chaussee

*Sales Associates*  
James Beaulieu  
Karen Contreras  
Christopher Geer  
Aaron Gonzales

Josh Gosovich  
Etsuko Kemble  
Brad Ewing  
Edwin Phillips  
Elise Chapman

**FINANCE DIVISION**  
*Chief Financial Officer*  
Jeff Eby

*Administrative Assistant*  
Kara Hu

**ACCOUNTING**  
*Controller*  
Debbi Lewang

*Accountant*  
Elmer Patoc

*Accounts Payable Specialist*  
Nancy Curtis

*Payroll/Benefits Specialist*  
Susan Sifferman

*Cash Receipts Clerk*  
Karl Sifferman

*Accounting Clerk*  
Saydie Wilson

*Data Entry Clerk*  
Susan Lewandowski

**ADMINISTRATIVE SERVICES**  
*Office Manager*  
Stephen Dwyer

*Office Manager/Document Specialist*  
Tom Douglass

*Loading Dock Clerk*  
Mary Lofstrom

*Operations Assistants*  
Matt Whitney  
Chao Truong

*Mail Courier*  
David Martin

*Receptionist*  
Maria Medina

*Document Specialist*  
Hsui-Ting Yang

**MUSEUM SERVICES DIVISION**  
*Senior Deputy Director for Museum Services and Registrar*  
Gail Joice

**REGISTRAR AND ART HANDLING**  
*Senior Associate Registrar*  
Philip Stoiber

*Associate Registrar*  
Lauren Tucker

*Senior Assistant Registrar*  
Dianne Simmonds

*Assistant Registrar*  
Melissa Klotz

*Coordinator of Art Handling*  
Dennis Meyer

*Art Handler*  
Charles Friedman

*Assistant to the Registrar*  
Heather Horn

*Summer Intern for Registrar's Office*  
Janis Dossen

*Museum Photographer/Rights and Permissions Officers*  
Howard Giske  
Paul Macapia

**EXHIBITIONS PREPARATION**  
*Exhibition Designer*  
Michael McCafferty

*Associate Exhibition Designer*  
Chris Manojlovic

*Preparator Mountmaking Coordinator*  
Jack Mackey

*Lighting Technician*  
Kenneth Leback

*Preparator*  
Paul Martinez

*Preparator/Mountmakers*  
Scott Hartley  
Gordon Lambert

**DOWNTOWN SECURITY**  
*Chief of Security*  
Scotty Ray

*Assistant Security Chief*  
David Rainey

*Security Supervisors*  
Nicholas Brown  
Cyrus Ghiasvand  
David Scalzo-Avery  
Roy Stanton  
Brian Wallace  
Joseph Williams

*Security Dispatchers*  
Bruce Bunting  
Matthew Finn  
Lawrence Larrick  
Jeffrey Schultz

*Visitor Services Officers*  
Julia Baker  
Gwendolyn Berndt  
Ronald Bordelon  
Aaron Bourget  
Kurtis Dingler  
James Dossen  
Kay Ferris  
Clarita Hinojosa  
Brian Hobbs  
Tracey Jain  
Christopher Keenan  
Michael McIntosh  
Danielle Norberg  
Ian Schooley  
Karin Söderlund  
Tasha Tasso  
Catherine Walworth  
Taggard Wood

**VOLUNTEER PARK SECURITY**  
*Security Supervisors*  
Roland Grober  
Lee Singer

*Security Dispatchers*  
Arturo Artorez  
James Parsons

*Visitor Services Officers*  
Luis Calzadilla  
Mary Chase  
Benjamin Muchnick

**FACILITIES—DOWNTOWN**  
*Maintenance Superintendent*  
Jeffrey Tosh

*Maintenance Engineer*  
Matthew Lennon

*Custodian Supervisor*  
Sandra Doughty

*Lead Custodian*  
Bohdan Shink

*Custodians*  
Alan Anderson  
Josephine Howell  
Xu Le  
Hong Ly  
Spencer Moen  
Cynthia Moore  
Neal Retke  
Van Tran

**FACILITIES—VOLUNTEER PARK**  
*Maintenance Supervisor*  
Jim Haarsager

*Maintenance Engineer*  
Tore Hoven

*Custodian*  
Alvin Gosser

*Every effort has been made to ensure accuracy in this report. We sincerely apologize if we have misspelled or omitted the name of anyone who supported the museum between July 1, 2000, and June 30, 2001. Please notify us of any such error by calling (206) 654-3197 so we can correct our records for the future.*



*cover, left to right, top to bottom: Horse Head, Ceramic, Eastern Han dynasty, 1st–3rd century A.D., h. 15 2/5, Mianyang Museum, photo: Paul Macapia; Chuck Close, American, b. 1940, Self-Portrait, 2000, 120 color silkscreen, 65 1/2 x 54 1/8 in., Seattle proof, Gift of Chuck Close in honor of Jon and Mary Shirley, 2001.30, photo: Paul Macapia; Human-like Head, bronze with gold foil, late Shang period, ca. 1200 B.C., h. 18 9/10 in., w. 8 7/10 in., Sanxingdui Museum, People's Republic of China, photo: Jian Cong; John Singer Sargent, American, 1856–1925, Léon Delafosse (detail), ca. 1893, oil on canvas, 39 1/2 x 23 3/8 in., Given in honor of Trevor Fairbrother by Mr. and Mrs. Prentice Bloedel by exchange, and by Robert M. Arnold, Tom and Ann Barwick, Frank Bayley, Jeffrey and Susan Brotman, Contemporary Art Council, Council of American Art, Jane and David R. Davis, Decorative Arts and Paintings Council, Robert B. Dootson, Mr. and Mrs. Barney A. Ebsworth, P. Raaze Garrison, Lyn and Gerald Grinstein, Helen and Max Gurvich, Marshall Hatch, John and Ann Hauberg, Richard and Betty Hedreen, Mary Ann and Henry James, Mrs. Janet W. Ketcham, Allan and Mary Kollar, Greg Kucera and Larry Yocom, Rufus and Pat Lumy, Byron R. Meyer, Ruth J. Nutt, Scotty Ray, Gladys and Sam Rubinstein, Mr. and Mrs. Allen Vance Salisbury, Herman and Faye Sarkowsky, Mr. and Mrs. Douglas Scheumann, Seattle Art Museum Supporters, Jon and Mary Shirley, Joan and Harry Stonecipher, Dean and Mary Thornton, Bill and Ruth True, Volunteer Association,*

*Ms. Susan Winokur and Mr. Paul Leach, The Virginia Wright Fund, Charlie and Barbara Wright, Howard Wright and Kate Janeway, Merrill Wright, and Mrs. T. Evans Wyckoff, 2001.17, photo: Paul Macapia; Human-like Mask (detail), bronze, late Shang period, ca. 1200 B.C., h. 10 1/2 in., w. 15 4/5 in., Sanxingdui Museum, photo: Paul Macapia; John Singer Sargent, American, 1856–1925, Madame Pierre Gautreau (detail), ca. 1884, oil on canvas, 81 1/4 x 42 1/2 in., Presented by Lord Duveen through the National Art-Collection Fund, 1925, © Tate Gallery, London 1999; Statue of a Standing Figure (detail), bronze, late Shang period, ca. 1200 B.C., h. 106 7/10 in., Sanxingdui Museum, Photo courtesy of the National Gallery of Art; Kikuchi Keigetsu, Japanese, 1877–1955, Irises (detail), late 1910s, Taisho period, hanging scroll; color on silk, 58 3/4 x 20 1/2 in., General Acquisition Fund and Asian Purchase Fund, 2001.15, photo: Paul Macapia; Mask with Protruding Pupils (detail), bronze, late Shang period, ca. 1200 B.C., h. 26 in., w. 54 3/10 in., Sanxingdui Museum, photo: Paul Macapia*

*back cover: John Singer Sargent, American, 1856–1925, Madame Pierre Gautreau, ca. 1884, oil on canvas, 81 1/4 x 42 1/2 in., Presented by Lord Duveen through the National Art-Collection Fund, 1925, © Tate Gallery, London 1999*

*inside front cover, top to bottom: Edward Hopper, 1882–1967, Chop Suey (detail), 1929,*

*oil on canvas, 32 x 38 in., Collection of Mr. and Mrs. Barney A. Ebsworth, John Singer Sargent, American, 1856–1925, Crescenzo Fusiardi (Portrait of Vincenzo Fusiardi), ca. 1890–1915, volume of 32 nude studies, charcoal on faded blue laid paper, 24 x 18 5/16 in., Courtesy of the Fogg Art Museum, Harvard University Art Museums, Gift of Mrs. Francis Ormond, 1937.9.13, photo: Katya Kallsen, © President and Fellows of Harvard College, Harvard University, John Singer Sargent, American, 1856–1925, Essie, Ruby, and Ferdinand, Children of Asher Wertheimer (detail), 1902, oil on canvas, 63 1/2 x 76 1/4 in., Presented by the widow and family of Asher Wertheimer in accordance with his wishes 1922, The Tate Gallery, London; Human-like Head, bronze, middle Shang period, ca. 1250 B.C., h. 10 3/5 in., w. 9 in., Sanxingdui Museum, photo: Paul Macapia*

*page 1: John Singer Sargent, American, 1856–1925, A Street in Venice, ca. 1880–82, oil on canvas, 29 9/16 x 20 5/8 in., © Sterling and Francine Clark Art Institute, Williamstown, Massachusetts*

*this page, above: Mask with Protruding Pupils, bronze, late Shang period, ca. 1200 B.C., h. 26 in., w. 54 3/10 in., Sanxingdui Museum, photo: Paul Macapia*