

MISSION STATEMENT

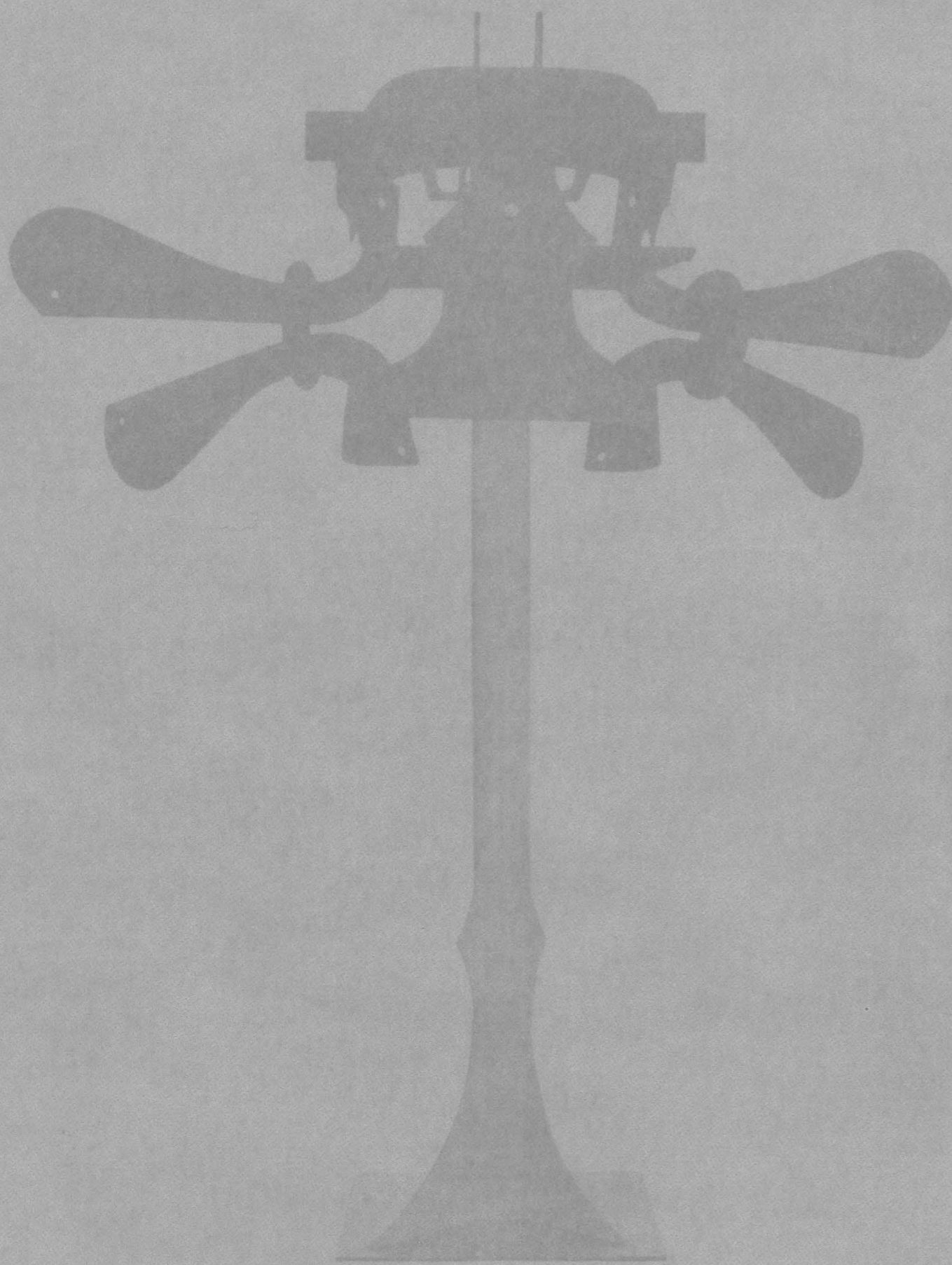
The Seattle Art Museum collects, preserves, presents, and interprets works of art of the highest quality. Forward-looking and ambitious, the Seattle Art Museum is dedicated to engaging the public in a dialogue about the visual arts.

Our priorities include actively building our collection, housed in both the downtown and Volunteer Park museums, producing compelling thematic exhibitions, strengthening our educational initiatives, and using technology to stimulate a passion for the visual arts.

The museum endeavors to balance levels of activity with resources, and is committed to building a substantial endowment fund that will guarantee SAM's financial health well into the twenty-first century.

CONTENTS

2	Chairman and President's Letter	Education	10
3	Director's Letter	Development	14
4	Exhibitions	Financial Report	26
7	Curatorial Endowment	Staff	27
8	Acquisitions	Board of Trustees	28



MISSION STATEMENT

The Seattle Art Museum collects, preserves, presents, and interprets works of art of the highest quality. Forward-looking and ambitious, the Seattle Art Museum is dedicated to engaging the public in a dialogue about the visual arts.

Our priorities include actively building our collection, housed in both the downtown and Volunteer Park museums, producing compelling thematic exhibitions, strengthening our educational initiatives, and using technology to stimulate a passion for the visual arts.

The museum endeavors to balance levels of activity with resources, and is committed to building a substantial endowment fund that will guarantee SAM's financial health well into the twenty-first century.

CONTENTS

2	Chairman and President's Letter	Education	10
3	Director's Letter	Development	14
4	Exhibitions	Financial Report	26
7	Curatorial Endowment	Staff	27
8	Acquisitions	Board of Trustees	28

Those of us involved in the Seattle Art Museum believe that art is a reflection of ourselves and gives meaning to our lives. As long-standing members of the museum family, we continue to be impressed by the impact this institution has on this community.

The past year was the most ambitious in the history of the museum. Powerful and varied artistic experiences were enjoyed by more than 400,000 visitors at both the downtown and Volunteer Park museums. More exhibitions, school tours, and special events were offered than ever before, including more than 2,200 educational programs reaching over 85,000 adults and children. The successful shift of our free day to the first Thursday of the month resulted in double the number of people taking advantage of this opportunity. These are just some of the accomplishments that exemplify our reach, growth, relevance, and impact.

In an increasingly challenging environment, we have also achieved notable financial success. We have maintained our long-standing track record of balancing our budget, despite the decline of important government resources. This achievement is certainly due to the generosity of our donors, but also to discipline and sacrifice on the part of the trustees and staff. The Annual Fund again achieved sterling results, which will help ensure the success of future exhibitions and programs. The Black & White Ball, with its huge attendance and superlative entertainment, was a grand success.

As we approach the end of the century, underlying all of the activities and challenges we face is the need to secure our financial future. We have added more than \$4.5 million to our endowment during this fiscal year. Continuing to build our endowment will be among our highest priorities over the coming years. Generous gifts from the estate of Guendolen Plestcheff, the Ruth J. Nutt Endowment Fund, and friends of Patterson Sims greatly strengthened the decorative arts and modern art departments.

On December 5, 1996, we will celebrate the fifth anniversary of the museum downtown. For those of us who grew up visiting the Seattle Art Museum in Volunteer Park, we can only be astounded at how the museum has been completely revolutionized over the last five years. Our director, Mimi Gardner Gates, has had a profound effect on the life of this institution, galvanizing the board and the staff in unprecedented ways. The combination of her curatorial skill, scholarship, and experience as one of the country's most distinguished museum directors has meant that the Seattle Art Museum can count itself not only as the major art museum in the region, but also as a respected international institution.

This annual report is dedicated to those who have contributed to making possible the achievements of the last year.


Dean Thornton, Chairman


John A. Moga, President



Treasures of Venice:
Paintings from the Museum
of Fine Arts, Budapest cap-
tivated visitors of all ages

Only through art can we get outside ourselves, know what another sees of his universe, which is not the same as ours, and see landscapes which would have remained as unknown to us as landscapes on the moon. Thanks to art, instead of seeing a single world, our own, we see it multiply until we have before us as many worlds as there are artists.

—Marcel Proust, *A la Recherche du Temps Perdu*



Young students proudly display work created in a SAM studio class


The Seattle Art Museum seeks to explore new worlds, to encourage shared experiences and meanings, and to strengthen our sense of community. We are inspired by the belief that art has the power to have a positive impact on people's lives.

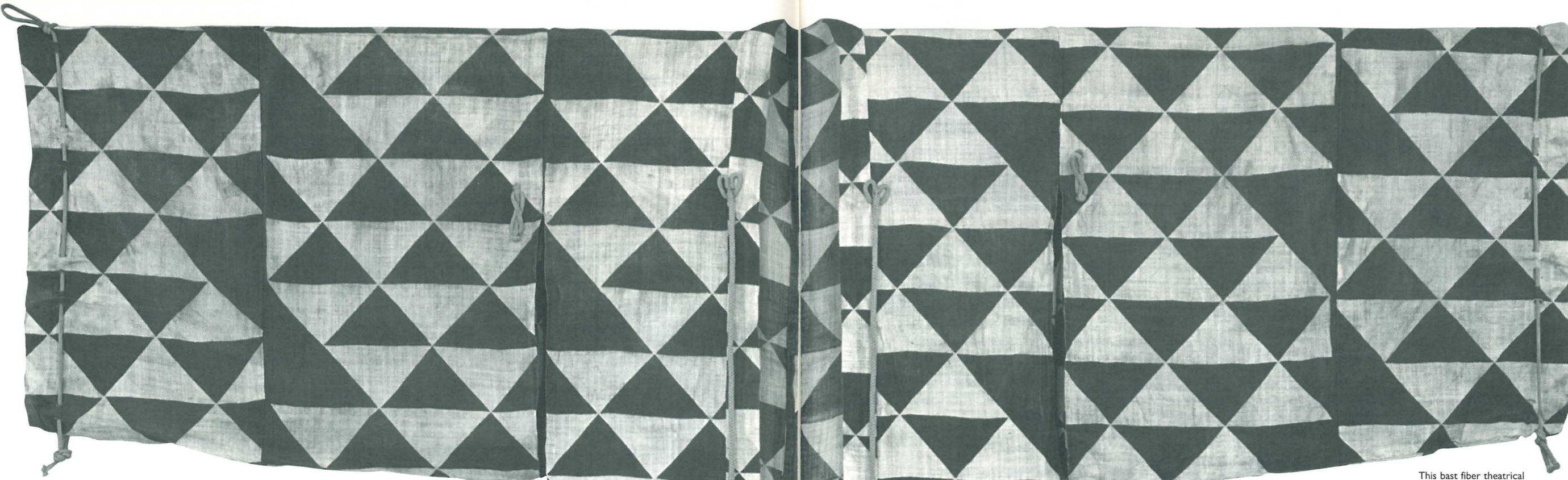
The Seattle Art Museum has an illustrious history of bringing alive for thousands of visitors the delight and wonder of art, and this year an unprecedented number of exhibitions reached new and diverse audiences. *Beyond the Tanabata Bridge* displayed a stunning array of gorgeous textiles, and *John James Audubon* celebrated original watercolors by this beloved artist. *Willem de Kooning in Seattle* revealed previously unexhibited paintings from local collections, and *Adornment for Eternity* presented exquisite jewelry from an ancient culture. *In the American Grain* exposed the works of five exciting twentieth-century artists, and *Australian Aboriginal Art* introduced us to a new and mysterious realm: the Dreamtime.

In addition to these and many other terrific exhibitions, *...and ambitious* SAM offered hundreds of events to the public: lectures, symposia, tea ceremonies, classes, tours, films, demonstrations, and more. The vast range of programs at SAM provides something for everyone, and, remarkably, most events are free with admission.

The next year brings its own set of goals and will undoubtedly have its own gratifying successes. None of our past or future accomplishments would be possible without the dedication, hard work, and inspiration of the museum board, volunteers, and staff. If the art is the soul of the museum, my colleagues are the heart. Ensuring strong managerial leadership at SAM has been crucial to achieving our goals, and we have been fortunate in welcoming two new deputy directors: Trevor Fairbrother, Deputy Director for Art/Jon and Mary Shirley Curator of Modern Art, and Maryann Jordan, Deputy Director of External Affairs. Along with Gail Joice, the museum's Senior Deputy Director, they will help bring greater visibility to the museum and open the museum to new audiences.

Solace, excitement, and meaning can be had by all who take the time to explore the museum. Your foresight and commitment to excellence has had a powerful impact in making "as many worlds as there are artists." Our sincerest and warmest thanks to all of you who helped to make the year such an outstanding success.


Mimi Gardner Gates



More than 400,000 people visited the Seattle Art Museum and Seattle Asian Art Museum this year. Over the past two years, attendance has increased 16%.

Visitors enjoyed more than 25 spectacular exhibitions at SAM and SAAM, an unprecedented number.

Museum admissions revenues exceeded projections and provided \$878,000 in operating support.

The Seattle Art Museum's first and most basic priority is to present compelling, provocative, and innovative exhibitions of the highest caliber. The exhibitions presented at SAM provide the public with works of art from varied cultures, promote appreciation of the museum's permanent collections, and explore recent developments in art.

SEATTLE ASIAN ART MUSEUM SPECIAL EXHIBITIONS

Special exhibitions and educational programming at the Seattle Asian Art Museum are made possible by the Institute of Museum Services, the Corporate Council for the Arts, and the Nesholm Family Foundation.

Han Rubbings from the Wu Family Shrine

August 31, 1995–December 17, 1995
An exploration of ancient Chinese symbolism
Funding for this exhibition provided through a gift from Florence R. Horton.

Profusion of Color

Korean Costumes and
Wrapping Cloths
September 9, 1995–March 3, 1996
Folk art from Korea

Local support for the exhibition provided by the Katherine Ager Baillargeon Endowment Fund, Seattle Art Museum.

Organized by the Asian Art Museum of San Francisco in cooperation with the Museum of Korean Embroidery. Presentation in the U.S. made possible by generous support from Ankunsa Co., Ltd., Daihan Paint & Ink Co., Ltd., Hanil Cement Mfg. Co., Ltd., Hansol Paper Co., Ltd., IBM Korea, Inc., The Korean Art and

Culture Committee of the Asian Art Museum of San Francisco, Korean Culture and Arts Foundation, Korea Foundation, the Korean Ministry of Culture and Sports, the Korean Museum Association, the Korean Overseas Information Service, the National Museum of Korea, and the Seoul City Government.

Adornment for Eternity

Status and Rank in Chinese
Ornament

January 13, 1996–July 14, 1996

A survey of ancient jewelry, mirrors, and metalwork

Organized by the Denver Art Museum. All objects are on long-term loan from the privately held Mengdiexuan Collection. This exhibition and its catalogue were made possible in part by generous donations from the Joseph and Loretta Law Foundation, the Woods Publishing Company, Celeste and John Fleming, Mary Ellen and Todger Anderson, and the Richfield Hotel Management, Inc.

John James Audubon

The Watercolors for
The Birds of America

October 12, 1995–January 7, 1996

Ninety original masterworks illuminating Audubon's artistic skill and passion for his subject

Attendance: 87,864

Local support provided by a major grant from The Boeing Company, with additional support from PONCHO.

Organized by The New-York Historical Society from its permanent collection. Support for the publication provided by Fidelity Investments through the Fidelity Foundation.

In the American Grain

Arthur Dove, Marsden Hartley,
John Marin, Georgia O'Keeffe and
Alfred Stieglitz

February 8, 1995–May 5, 1996

Eighty works by five gifted twentieth-century American masters

Attendance: 94,099

Local support for the exhibition provided by grants from the Seattle Arts Commission, the Seattle Art Museum Supporters (SAMS), and corporate support by SAFECO. Major support for education programs in Seattle provided by the William and Melinda Gates Endowment Fund.

Organized by The Phillips Collection, Washington, D.C., and made possible by generous grants from the John S. and James L. Knight Foundation, Sotheby's, and the National Endowment for the Arts. With special loans, including paintings from the Ebsworth Collection for the Seattle Art Museum venue only.

This bast fiber theatrical robe exemplified the beautiful patterns and textures of the Japanese textiles featured in *Beyond the Tanabata Bridge* (Gift of Virginia and Bagley Wright, 89.119)

Beyond the Tanabata Bridge

A Textile Journey in Japan

June 13, 1996–September 15, 1996

More than 80 exquisite textiles from SAM's collection

Attendance: 80,167

This exhibition was organized by the Seattle Art Museum. Support for this exhibition was generously provided by the Port of Seattle in honor of NYK Line and a century of trade with Japan.

Additional support provided by Lakeside Industries, the Seattle Art Museum Supporters (SAMS), and the Kreielsheimer Exhibitions Endowment Fund. Organizing funds provided by the National Endowment for the Arts, a federal agency; King County Arts Commission; and PONCHO.

SEATTLE ART MUSEUM

SPECIAL EXHIBITIONS

Treasures of Venice

Paintings from the Museum of Fine
Arts, Budapest

June 22, 1995–September 17, 1995

Fifty-five celebrated Venetian paintings
spanning 300 years

Attendance: 89,614

Local support by the Seattle Art Museum Supporters (SAMS), PONCHO, and US WEST Foundation. Additional support provided by The Boeing Company, Piper Jaffray, Inc., Seafirst Bank, and Walker Richer & Quinn.

Organized by the Minneapolis Institute of Arts. The exhibition and catalogue were supported by a grant from the National Endowment for the Arts, a federal agency.

creating compelling thematic exhibitions

DOCUMENTS NORTHWEST: THE PONCHO SERIES

Holding the Past: Historicism in Northwest Glass Sculpture

July 1, 1995–February 11, 1996
Luminous works from eight Northwest artists
Support provided by PONCHO, the National Endowment for the Arts, and the Art Alliance for Contemporary Glass.

From the Floating World to the Street

December 21, 1995–March 24, 1996
Contemporary Northwest street photography and woodblock prints of Hiroshige
Support provided by PONCHO.

COLLECTION AND SPECIAL INSTALLATIONS

Martin J. Heade

The Gems of Brazil
September 15, 1995–January 14, 1996
Jewel-like paintings of hummingbirds loaned from private collections

Paranoid Mirror

Lynn Hershman
(1995 Anne Gerber Exhibition)
August 10, 1995–December 10, 1995
An interactive installation using innovative video and computer technology
Support provided by the Anne Gerber Fund.

Bird Sanctuary

August 18, 1995–February 11, 1996
Birds reflected in works drawn from SAM's collection

Willem de Kooning in Seattle

November 2, 1995–March 3, 1996
Works by a living master drawn from local collections
Support provided by the Herman and Faye Sarkowsky Endowment Fund and the Mnuchin Foundation, New York.

Selections of 18th-century French, Vincennes-Sevres Porcelain from the Collection of Ulrich and Stella Fritzsche

December 5, 1995–present
Exquisite European porcelain

African Orthodox Art

December 8, 1995–December 1996
Christian themes in art from Ethiopia
From the collection of Al J. Venter.

Australian Aboriginal Art

February 23, 1996–February 1997
Bold expressions of the Dreamtime
From the collection of Robert Kaplan and Margaret Levi.

Recent Northwest Acquisitions

March 1, 1996–August 4, 1996
Contemporary Northwest art

LOANS TO AND FROM SAM AND SAAM

The museum lent 111 objects from its permanent collection for 24 exhibitions shown in 49 national and international venues.

In addition to special exhibition and long-term loans, 215 artworks loaned from 53 institutions or private collectors were on view in the galleries.



The Monk at the Moment of Enlightenment was one of two SAM pieces that joined 130 major works of art from 44 countries in *Rings: Five Passions in World Art*, an exhibition in Atlanta that celebrated the Olympic Games (Eugene Fuller Memorial Collection, 36.13)

Morris Graves

Flower Paintings

March 3, 1996–August 4, 1996
Contemplative, gorgeous paintings exhibited in honor of the artist's 85th birthday
Support provided by the Mary and Dean Thornton Endowment Fund of the Seattle Art Museum.

Mary Cassatt

Pastels and Prints

March 25, 1996–June 23, 1996
Maternal themes in works loaned from private and public collections

Minimalism

Aftermath and Affinities

March 27, 1996–August 25, 1996
Reductive art from SAM's collection

About Place/About Face

April 11, 1996–August 4, 1996
Innovative photography from fourteen contemporary artists

THANK YOU

In addition to corporate, government, and private foundation support, funding for Seattle Art Museum exhibitions is provided by the Annual Fund. Year after year, your contributions to the Annual Fund help to make SAM's exhibitions possible. The Seattle Art Museum gratefully acknowledges the crucial support and generosity of contributors to the Annual Fund.

(Above left) Thomas Standing, *Sucking His Thumb* (1893) was loaned to the exhibition *Mary Cassatt: Pastels and Prints* (private collection)

ENDOWMENTS ENRICH DECORATIVE ARTS DEPARTMENT

Two extraordinary gifts to the museum's endowment, the Ruth J. Nutt Endowment Fund and the Guendolen Plestcheeff Endowment for the Decorative Arts, will make a lasting impact on SAM's decorative arts department. These gifts create essential operating support for the decorative arts program, enrich SAM's holdings of decorative arts, and provide the means by which the decorative arts program can flourish.

The endowment of key curatorial positions such as the Ruth J. Nutt Curator of Decorative Arts allows the museum to attract and retain the finest curatorial staff, to provide support for salaries, programs, and research, and to encourage departmental leadership and scholarship.

Endowments in support of museum collections, such as the Guendolen Plestcheeff Endowment for the Decorative Arts, provide support for acquisition of art, exhibition installations, curatorial scholarship and research, and educational programs and symposia.

"These two outstanding gifts open the door to the future for European and American decorative arts at the Seattle Art Museum," says Julie Emerson, Ruth J. Nutt Curator of Decorative Arts. "With the increased ability to acquire, exhibit, research, and publish about decorative arts, we are poised to become a nationally recognized center for this field."

The Seattle Art Museum extends enthusiastic appreciation to Ruth J. Nutt and the Plestcheeff Institute for their tremendous support and their farsighted vision for the decorative arts.



Guendolen Plestcheeff in the 1920s

encouraging leadership and scholarship

TRIBUTES TO PATTERSON SIMS CREATE LASTING LEGACY

When SAM's former chief curator, Patterson Sims, announced his impending departure from the museum last fall, longtime SAM supporters and friends of Patterson came together to create a remarkable tribute in recognition of his achievements. The group gave \$2.6 million to establish three outstanding endowment funds: the Patterson Sims Fellowship, the Patterson Sims Curatorial Travel Fund, and the Jon and Mary Shirley Curator of Modern Art. Thanks to the generosity of this dedicated group of SAM trustees and friends, our curatorial staff now has fresh opportunities to grow professionally.

The Patterson Sims Fellowship will be awarded annually to a SAM curator who demonstrates extraordinary performance in curatorial work. The recipient will receive funds that may be used for travel, research materials, exhibitions and programs, and research interns.

Funds provided by the Patterson Sims Curatorial Travel Fund will be available to all of SAM's curators. The fund allows

curators to view important exhibitions at other museums, to examine potential acquisitions outside of Seattle, and to attend conferences with professional colleagues.

In endowing a key curatorial position, the Jon and Mary Shirley Endowment for Modern Art provides critical support for the department as the museum's modern art collection grows.

Collaborative efforts such as those made in honor of Patterson Sims provide lasting legacies for the museum and the community it serves. The Seattle Art Museum warmly thanks all those who made this bold vision a reality.



Patterson Sims (left) with Mary and Jon Shirley at the announcement of the Jon and Mary Shirley Curator of Modern Art endowment

The Seattle Art Museum collections were enriched by the acquisition of 172 new works of art, many acquired through the generosity of donors.

In any given week at either museum, visitors saw something new on view, from the museum's collection or in new installations.

actively building the collection

Objects considered for acquisition either enhance existing holdings or fill a need. Each addition, from a Tlingit basket to a video installation by Gary Hill, contributes to the shape of the collection. One of the last great Seattle collections of European porcelain was given by Dr. and Mrs. S. Allison Creighton, early members of the Seattle Ceramics Society. Josiah McElheny's *Rearrangeable Roman Glass Collection III*, a technical tour-de-force that cleverly comments on traditional methods of museum display, was among a group of gifts honoring departing chief curator Patterson Sims. Mark di Suvero's outdoor sculpture, *Schubert Sonata*, is a splendid addition to the collection. An elegant Noh robe enhances SAM's important collection of Japanese textiles, and an imposing masquerade costume from Zaire complements the renowned Katherine White Collection of African Art.

House of Cards is the first work by Gary Hill to enter the museum's collection (purchased with funds from Mr. and Mrs. David E. Skinner, William and Ruth True, and the Collectors' Forum, 96.10)



This Noh robe is a striking addition to the art of Asia at SAM (Gift of Richard Louis Brown, 95.138)

DONORS TO THE COLLECTION

Anonymous
Catherine and Ralph Benkiam
Ger Boosten, artist
Rena Bransten
Ree Brown
Richard Louis Brown
Eduardo Calderon, artist
Linda Cannon Gallery
Mr. and Mrs. Paul W. Clark
Pamela and Oliver E. Cobb
Collector's Forum
Ruth Collins
Dr. and Mrs. S. Allison Creighton
Hester Diamond
Docent Class of 1977
Robert B. and Honey Dootson
Sylvia Duryee
Ulrich and Stella Fritzsche
Family of E. Lyman Graves, Jr.
Mark Groudine and Cynthia Putnam
Sarah Hart
Frederick and Sybil Heidel
Catherine Butler Johnson
Gail Joice
Robert E. and Sandra L. Mattielli
Kris McClusky
Byron R. Meyer
Mr. and Mrs. Robert G. Moch
Ruth J. Nutt
Michael and Judy Ovitz
David and Maria Paly
Mr. and Mrs. Harold E. Rayburn
Ed Rossbach, artist
Sanford Sage
Jon and Mary Shirley
Patterson Sims and Katy Homans
Mr. and Mrs. David E. Skinner
Rod Slemmons
Lea Sneider
Taiko Suzuki
Henry and Ruth Trubner
William and Ruth True
Karen Wang
Mason M. Wang
Wes Wehr
Katherine Westphal
Ron White
Bagley Wright
The Virginia Wright Fund



ART OF AFRICA

Zaire: Pende

Masquerade costume with two headdresses

20th century
Feathers, fiber, raffia, pigment, fur
Gift of Mark Groudine and Cynthia Putnam, 95.131

Nigeria: Yoruba

Gelede headdress

20th century
Wood, enamel paint
Gift of Mark Groudine and Cynthia Putnam, 95.130

ART OF ASIA

Japan

Noh robe

Late 17th–early 18th century
Silk with thread-dyed patterns
Gift of Richard Louis Brown, 95.138

Kame (storage jar)

16th century
Tokoname ware (stoneware)
Purchased with funds from Robert B. and Honey Dootson, 95.139

China

Huang Shen (1687–1772?)

Lü Qian Presents a Sword

1731
Ink and color on silk
Gift of Karen Wang in memory of her father, Wong Nan Ping, 95.133

DECORATIVE ARTS OF EUROPE

France

Snake-handled bowl

Vincennes, ca. 1750
Soft-paste porcelain with gilding
Gift of Ulrich and Stella Fritzsche, 95.53

Vase

French, late 19th century
Cameo glass
Gift of Mr. and Mrs. Robert G. Moch, 95.120

Cup and saucer

Chantilly, ca. 1760
Porcelain
Gift in memory of Ina Sage from her Docent Class of 1977 and Sanford Sage, 95.140

Germany

Bowl

Frankenthal, ca. 1760
Porcelain
Gift of Dr. and Mrs. S. Allison Creighton, 95.112

A complete list of FY96 acquisitions may be obtained from the Curatorial Division, 654-3178

MODERN ART OF EUROPE AND NORTH AMERICA

United States

Lynn Hershman (b. 1941)

Paranoid Mirror

1995
Mixed-media installation
Anne Gerber Fund Project, 95.80

Gary Hill (b. 1951)

House of Cards

1993
Video installation
Purchased with funds from Mr. and Mrs. David E. Skinner, William and Ruth True, and the Collectors' Forum, 96.10



Josiah McElheny (b. 1966)

Rearrangeable Roman Glass Collection III

1994
Glass installation
Gift of Byron R. Meyer in honor of Patterson Sims, 96.37

Ed Rossbach (b. 1914)

Gateway

1970
Plastic, foam rubber, tape
Gift of the artist, 95.59

Kiki Smith (b. 1954)

My Blue Lake

1995
Photogravure, lithograph
Purchased with funds from the Prints Purchase Fund, 95.71

Mark di Suvero (b. 1933)

Schubert Sonata

1992
Steel sculpture
Gift of Jon and Mary Shirley, The Virginia Wright Fund, and Bagley Wright, 95.81

Italy

Alberto Burri (1915-1994)

Sacco

1955
Burlap, cardboard, muslin
Gift of Hester Diamond in memory of Alberto Burri, 95.134

NATIVE ART OF THE NORTHWEST COAST

Tlingit

Basket

mid-19th century
Spruce root, grass, fern stem, seeds
Gift of Sylvia Duryee, 95.87

Tlingit

Chilkat robe

late 19th century
Mountain goat wool, yellow cedar
Gift of Sylvia Duryee, 95.89

Haida

Tom Price (late 19th century)

Spruce root hat

(shown left)
late 19th century
Spruce root, paint
Gift of Sylvia Duryee, 95.90

CONSERVATION AT SAAM GETS A BOOST

In 1995, the museum received a highly competitive matching grant of \$25,000 from the Institute of Museum Services to relocate its significant Asian, European, and American textile collections. The project created a Textile Storage Study Room developed in consultation with textile conservator Sandra Troon. A 1,400-square-foot space was converted to a state-of-the-art facility to rehouse more than 1,000 textiles, which had previously been overcrowded.

Improvements included the addition of an HVAC system for accurate environmental control and a new computer station for immediate recordkeeping. Each of these extraordinary textiles is now stored in the manner most appropriate to its individual needs.

Following the gift of five Chinese wet lacquer funerary bowls in 1995, the museum began participating in research to develop an anaerobic stabilization case. The Getty Conservation Institute is kindly collaborating with our staff and Seattle conservators Patricia Leavengood and Barbara Roberts.

Popular hands-on educational resources in the special exhibitions encourage families to have fun together



enhancing educational initiatives

Stimulating a passion for the visual arts is a paramount goal of the Seattle Art Museum, and this year more visitors than ever before participated in a record number of exciting new and successful ongoing programs. More than 85,000 people attended over 2,000 educational programs offered at SAM and SAAM.

New programs, such as ArtStars: Kids Speak on Art, were initiated. ArtStars is an exciting, intensive Saturday program that trains eighth-grade students in Asian art and culture. After completing their training, the ArtStars give tours to younger students from their schools and community organizations. This past year, nine ArtStars completed their training and are ready to act as mentors to a new group.

Partnerships with diverse community organizations have introduced the museum to many new audiences. The art councils collaborated with the Mexican consulate to commemorate the Mexican festival El Día de los Muertos. The celebration featured a traditional altar installation in the museum's lobby by local artists and an extraordinary performance of pre-Hispanic alternative music inspired by pre-Hispanic cultures.

A NEW TEACHER RESOURCE CENTER

Extensive planning began for the opening of SAM's long-awaited Teacher Resource Center, which is part of a four-year initiative known as Growing Up With Art. This center will provide teachers with access to teacher guides and videos from SAM and other museums, and with the use of SAM's hands-on Outreach Suitcases. The original concept of the center as a physical space for teachers to use SAM resources was expanded with a grant from The Pew Charitable Trusts and Microsoft Corporation to include a virtual component on the World Wide Web.

FAMILY PROGRAMS

More than 6,600 family visitors participated in five day-long family festivals at SAM and SAAM. People ages 2 and up enjoyed art-making, musical performances, storytelling, films, and other activities.

Interactive family guides, hands-on learning materials, and new "Family Fun Packs" provided dynamic activity suggestions for the museum's youngest visitors.

More than 9,000 visitors responded to art in the Special Exhibitions Galleries by making some of their own at drop-in art-making spaces.



(This page and next) Children's extraordinary interpretations of key works in the galleries

SCHOOL PROGRAMS

More than 24,500 students toured SAM and SAAM in 613 docent-led and 249 self-guided tours.

In 268 Art Studio Sessions, 8,296 students participated in hands-on art-making activities.

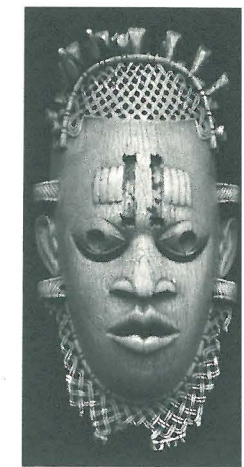
Teachers throughout the United States and Canada ordered 260 Curriculum Resource units, reaching 57,980 students.

This was an exciting and successful year of school programs at SAM, and will serve as a foundation from which the museum will work to help improve the quality of arts education in Seattle schools.

More extensive tours were made available at Volunteer Park, reflecting a further development of School Services at SAAM and our desire to match our tour options to the needs of teachers and students.

SAM worked closely with three school districts in King County through the District Partnership Program, funded by the King County Arts Commission, Coca-Cola Foundation, and other sponsors. Sixth-graders in Seattle and Federal Way and ninth-graders from Northshore studied the art of Asia. The District Partnership Program was expanded this year to include an artist-in-residence component for all participating classes.

In a partnership with Whitworth Elementary, two artists-in-residence explored storytelling traditions from Japan and India at the school, and students came to SAAM for a tour of the collections. Students from the Powerful Schools program were able to work with local artists who offered classes on African, Native American, and Chinese art to children and entire families.



a cultural adventure

Head of a King
Black Basalt
Ancient Egypt
Detailed
Broken
Rough
Sculpted
Head of a King,
Tell me about
your life?



THANK YOU

The Coca-Cola Foundation, King County Arts Commission, Seattle Arts Commission, and the Fales Foundation helped provide free museum tours and art activities to thousands of school-children. The Hearst Foundation is helping endow the museum's education programming.

The Pew Charitable Trusts, Microsoft Corporation, and the D.V. and Ida J. McEachern Charitable Trust have all given generously to the development of the new Teacher Resource Center at SAAM.

Dear Seattle Art Museum,

We wanted to thank you for the wonderful tour. . . . You made our experience at the museum a cultural adventure.

The museum is beautiful, and . . . truly a special place. Thank you for your time, energy, and expertise. It is wonderful to experience a museum that is so receptive to children and their schools.

We look forward to future visits to the Seattle Art Museum.

Sincerely,
Nancy Michel, Director of Education
Voyager Montessori Elementary School

Increased programming at the Seattle Asian Art Museum was made possible through the generous support of David Utterberg and Nayda Chiongbian, Mrs. Frances L. Blakemore, the Nesholm Family Foundation, and the Joel E. Ferris Foundation. Gifts to the Richard E. Fuller Endowment Fund from Priscilla Bullitt Collins, the Norcliffe Foundation, Christopher Larson and Julia Calhoun, Dorothy C. Malone, and many others helped provide ongoing operating support for SAAM.



Art of the Northwest coast and Georgia O'Keeffe's circle of artists were explored by 115 adults in classes held in collaboration with Seattle Central Community College

ART COUNCIL OFFICERS

African, African American and Caribbean Arts Council

Mambo Emedi, *President*
Jane Toliver, *Vice-President*
Marcia Caldirola, *Treasurer*

Council of American Art

Ann Barwick, *President*
Allan Kollar, *First Vice-President*
Tom Barwick, *Second Vice-President*
Colleen Kollar, *Secretary*
B.J. Martindale, *Treasurer*

Asian Art Council

Robert Dootson, *President*
Cheney Cowles, *Vice-President*
Ann W. Woods, *Secretary*
Duane Shipman, *Treasurer*

Collectors' Forum

Timothy Bradbury, *Chair*

Contemporary Art Council

Keith Brintzenhofe, *President*
Peter Nesbett, *Vice-President for Programs*
Elizabeth Sandvig, *Secretary*
Rick Semple, *Treasurer*

Connoisseurs' Forum

Theiline Scheumann, *Chair*

Decorative Arts and Paintings Council

Neva Wiseman, *President*
Helen Buck, *Vice-President*
Suzanne Ries, *Secretary*
Herbert H. Hall, *Treasurer*

Native Arts of the Americas and Oceania Council

Sara Smith, *President*
Paul Ritner, *Vice-President for Programs*
Daphne Morris, *Secretary*
R. Gloria Lobb, *Treasurer*

Pacific Northwest Arts Council

Tricia Eden, *President*
Coryl Celene-Martel, *Vice-President for Programs*
Lynn Hughes, *Secretary*
Marilyn Tsuchiya, *Treasurer*

Photography Council

David D. Johnson, *President*
Isabel Egglin, *Vice-President*
Jean Timmermeister, *Secretary*
Henry Steinhardt, *Treasurer*

ADULT PROGRAMS

More than 1,200 seniors enjoyed the popular First Friday Lecture Series sponsored by the Volunteers Association—offered since the museum opened in 1933.

The Art Councils presented 82 programs that enhanced appreciation and understanding of the art and cultures represented in the museum's collections. This year 5,600 people participated in council activities, and council memberships grew to 1,028.

More than 15,000 people enjoyed Seattle's longest-running noncommercial film program, including a weekend with director Werner Herzog, the fourth annual Polish Film Festival, the Seattle Asian American Film Festival, the eighteenth annual Film Noir series, a celebration of French comedies, and the restored films of Michael Powell and Emeric Pressburger.

More than 750 people attended the eleven popular Art à la Carte lunchtime lectures and heard from artists such as William Bailey, Tim Girvin, Jacob Lawrence, and Billy Morris.

SAM and SAAM entered into a partnership with Seattle's oldest musical organization, the Ladies Musical Club, which brought ten concerts and 688 visitors to the museums.

SAM's three guilds sponsored 25 programs for 850 participants.



Panelists participate in this year's Kwanzaa Creativity Celebration, a popular holiday event

VOLUNTEERS

This year 575 volunteers contributed more than 32,800 work-hours to the museum at an estimated value of \$196,800.

More than 100 Docents and African Art Interpreters gave tours to 17,597 adults at SAM and SAAM.

The museum honored 31 volunteers for their important service to museum departments, councils, guilds, and the Volunteers Association.

The Volunteers Association pledged \$50,000 towards the creation of a Volunteers Association Endowment Fund to help support programs and activities. A gift of \$30,000 has already been made toward the pledge!

Volunteer Awards

Grace Morgan
Dorothy C. Malone Award

Dottie Bean
Grace Chapman
Tessa Chilton
Judy Clark
Jane Davis
Mike Ford
Shary Frankfurter
P. Raaze Garrison
Mark Gibson
Libby Goldstein
Beth Halfacre
Herb Hall
Lynn Hughes
Sally McDonough
Beverly Mendheim
Daphne Morris
Katy Mullarky
Irene Pennell
Joe Pepia
Molly Radke
Mary Ann Ruthruff
Anne Rutledge
Rick Semple
Peg Settles
Fran Solov
Bang Jing Sun
Jean Timmermeister
Vicki Wellmen
Angelina Yen
Colleen Zorn

Volunteers Association Officers and Executive Committee

Lilly Halliday, *Chairman*
Kym Adams, *Secretary*
Walter Beaumont, *Treasurer*
Dottie Malone, *Historian*
Tina Alexander, *First Vice-Chairman, Human Resources*
Evelyn Rosellini, *Vice-Chairman, Museum Services*
Mary Wappler, *Vice-Chairman, Education*
Shirley Loper, *Vice-Chairman, Programs*
Sally McDonough, *Vice-Chairman, Special Events*
Bette Bell
Larry Cheatham
Melanie Chenaar
Iris Dunki-Jacobs
Jeanne Eaton
Marilyn Eldrenkamp
Michael Ford
Joan Larson
Belle Maxwell
Jean Milnor
Katy Mullarky
Norene Ott
Andrea Paup
Cecelia Roop
Peg Settles
Betty Winskill
Shirley Younglove



SAM'S DEAR FRIEND

At the spring Volunteers Reception, the museum was honored to announce that the offices at the Seattle Asian Art Museum will be named the Dorothy C. Malone Administrative Offices. It gives all of us at SAM great pleasure to recognize the outstanding contributions, the many years of exceptional volunteerism, and the unflagging devotion that our friend Dottie Malone (pictured above with trustee John Hauberg, left, and Grace Morgan, the Dottie C. Malone Volunteer of the Year, right) has given so generously to SAM. It is the efforts of individuals like Dottie, combined with the work of so many other generous volunteers, that have enabled SAM to become the outstanding institution it is today.

Dottie has been involved with the museum since it opened in 1933. Over these 63 years, each of us has benefited on many occasions from Dottie's vast knowledge of SAM's history and of the community. But more importantly, we have all gained in special ways from Dottie's wisdom and friendship. Dottie, a heartfelt thank-you for all you have done for SAM.

PUBLICATIONS

The Samuel H. Kress Foundation has generously funded a publication about SAM's Kress collection, and a National Endowment for the Arts grant will support the creation of a catalogue on SAM's African holdings. *Native Vision*, a catalogue of Native American art, is being co-produced by SAM and the University of Washington Press with major funding from The Henry Luce Foundation and The Eugene V. & Clare E. Thaw Charitable Trust. The Seattle Art Museum designed, edited, and produced *Paranoid Mirror: Lynn Hershman*, which accompanied the exhibition of the same name supported by the Anne Gerber Fund.

REFERENCE LIBRARIES AT SAM AND SAAM

The museum libraries added 510 titles, bringing the library holdings to 17,576. Of these, 212 were added to the Dorothy Stimson Bullitt Library and 298 titles in 518 volumes were added to the McCaw Foundation Library of Asian Art. This collection continues to grow significantly thanks to the generosity of a distinguished collector of Asian art.

Gifts to the libraries were received from Gordon Menzies, Elliott Mittler, Patterson Sims and Katy Homans, and the West Seattle Art Club.

RENTAL/SALES GALLERY

Sales increased 32%, rentals and renewals went up, and—most dramatic of all—net income increased 115% for the Gallery, the major fundraiser for the Volunteers Association.

Local businesses and private individuals rented 1,705 artworks by Northwest artists, and 192 artworks were sold. Four successful exhibitions highlighted the work of contemporary artists in the Pacific Northwest.

More than \$4,963,000 was given by 25,930 local corporations, foundations, and individuals to support museum exhibitions, programs, and operations.

The museum received funds from the King County Arts Commission to provide visitors with visual- and hearing-assistance equipment to enhance their visits. The Norman Archibald Charitable Foundation's grant improved museum security.

balancing levels of activity with resources

A unique partnership of more than 22,000 individual donors and members, together with corporations, foundations, and government agencies, has helped the Seattle Art Museum to truly make an impact on the community. The extraordinary generosity of this partnership enabled SAM to continue to balance the budget and provided critical financial support, which made possible the excellent artistic and educational programming that is a hallmark of SAM.

The board and the staff of the Seattle Art Museum sincerely thank each and every donor in this partnership who helped make a difference during the past year.



Artist Jacob Lawrence was interviewed by Peter Nesbitt during the lunchtime lecture series Art à la Carte

A SPECIAL THANKS

Throughout this annual report we thank the foundations, government agencies, and corporations that make possible the museum's many activities, from education programming to conserving art. A special thank-you to the following institutions, whose steadfast support of the museum is critical to leveraging grants from other sources and maintaining the high level of activity chronicled in this report.

**Corporate Council for the Arts
PONCHO (Patrons of Northwest
Civic, Cultural, and Charitable
Organizations)**

**Institute of Museum Services
Seattle Arts Commission
King County Arts Commission
Washington State Arts Commission
Kreielsheimer Foundation
National Endowment for the Arts
for its endowment-building
challenge grant
National Arts Stabilization Fund**



building an endowment fund for the twenty-first century

Programs, acquisitions, and staffing needs are all dependent on the strength of SAM's permanent resource base. Endowments for the Seattle Art Museum grew by 18% this year. These funds provide ongoing support for museum programs and ensure that essential museum activities can continue in response to public demand.

Building the endowment will enable SAM to maintain its current level of programs and services and help to create new initiatives that will further SAM's renown as a world-class institution.

Contributions of \$10,000 and greater enable donors to establish named endowment funds. The funds can be cumulative in nature, and donors may supplement their funds over the years. Once an endowment fund reaches \$50,000 or more, donors are permanently recognized on the Endowment Honor Roll in the downtown museum's First Avenue Lobby.

As a stable and permanent source of yearly income, a significant endowment fund is critical to the museum's continued success in meeting its standard of excellence in the visual arts into the next century and beyond.

Distinguished Benefactors

The Foster Foundation
Mr. and Mrs. William H. Gates III
Kreielsheimer Foundation
McCone Foundation
Illsley Ball Nordstrom
Ruth J. Nutt
Guendolen Carkeek Plestcheeff
Jon and Mary Shirley
Mr. and Mrs. Bagley Wright
Barbara Hughes Carnahan in Memory of Albert and Hermina Hambach
The Bagley Wright Fund
Patrons
Mr. and Mrs. Kenneth R. Fisher
Janet W. Ketcham
The Estate of Theiline Pigott McCone
The R.D. Merrill Foundation
National Endowment for the Arts
National Endowment for the Humanities
Herman and Faye Sarkowsky

Sponsors

The Estate of Alice Bringham
Jane and David R. Davis
The Hearst Foundation, Inc.
The Estate of Priscilla Klepser C. Calvert Knudsen
Christopher Larson and Julia Calhoun
Mary and George Coleman
Martin in Memory of Marian Coleman Martin
The Estate of Peggy Locke Newman
The Estate of Coralynn Pence Bette and David Sprague
Mary and Dean Thornton
Donors
Joan and Morrie Alhadeff
The Joan and Morrie Alhadeff Family Fund
Dr. and Mrs. Ellsworth C. Alvord, Jr.
Jeffrey and Susan Brotman
Patricia S. Denny
Bryant and Mildred Dunn

The Estate of Arthur F. Ederer
Mr. and Mrs. Gerald Grinstein
Mr. and Mrs. Hamilton R. Harris
Helen and Marshall Hatch
Mr. and Mrs. John H. Hauberg
Mr. and Mrs. Richard C. Hedreen
The Estate of Howard Kottler
The Estate of Elmer J. Nordstrom
Mr. and Mrs. Sam Rubinstein
Dr. Charles Simonyi
Urasenke Foundation
Mr. and Mrs. T. Evans Wyckoff
The Estate of Catherine M. Zesbaugh
Associates
Mr. and Mrs. Frederick Ayer
The Estate of Dorothy M. Black
Mr. and Mrs. Robert B. Dootson
Lucille C. Fuller
The Estate of Laurene T. Gandy

The Estate of Boyer Gonzales
Agnes Gund and Daniel Shapiro
The Estate of James F. Hodges
Christina and James Lockwood
Mr. and Mrs. David E. Maryatt
Byron Meyer
Mr. and Mrs. John A. Moga
Lee and Stuart Rolfe
Mr. and Mrs. Douglas Scheumann
The Estate of Edna C. Simon
Mrs. David E. Skinner
Skinner Foundation
Mr. and Mrs. Vinton H. Sommerville
Althea and Samuel Stroum
Bill and Ruth True
Mr. and Mrs. Windsor Utley
Volunteers Association
Bob and Laura-Lee Woods
Howard and Carol Wright
H.S. Wright III and Katherine Ann Janeway

Other Endowment Funds with Assets of \$25,000 or More

Katherine Agen Baillargeon Endowment Fund
Betty Bowen Endowment Fund
Anne Gerber Endowment Fund
Trusts Held Outside the Museum
Norman Davis Purchase Fund at the Seattle Foundation
Richard E. Lang Endowment Fund at the Seattle Foundation
Seattle Art Museum Foundation
Charles Edward Stuart Charitable Trust

(Above) Anhinga (1822) was featured in John James Audubon (The New-York Historical Society)

This year 2,686 museum members gave to the Annual Fund over and above their membership dues, providing \$730,000 to support exhibitions, programs, and operations.

THE DIRECTOR'S CIRCLE

A new donor category, the Director's Circle, was initiated to honor our director, Mimi Gardner Gates, and to provide annual fund support for the many programs we offer at the Seattle Asian Art Museum in Volunteer Park. SAM recognizes the inaugural members of this important group.

Mr. and Mrs. Don G. Abel	Mrs. George H. Parsons
Hugh S. Ferguson	Mrs. John S. Robinson
Mrs. Otis D. Hyde	Mr. and Mrs. Howard Sloneker
Laura Ingham	Marian E. Smith
Henry and Mary Ann James	Walter and Marie Williams

THE PRESIDENT'S CIRCLE

The President's Circle, created to honor outstanding contributions to the Annual Fund, is a special campaign supported by trustees and close friends of the museum. We are pleased to welcome three new members to the group: Mrs. Mildred Dunn and Bonnie and Gaither Kodis.

Anonymous	Mr. C. Calvert Knudsen
Mrs. Morris J. Alhadeff	Mr. and Mrs. Gaither M. Kodis
Chap and Eve Alvord	Ms. Martha Kongsgaard and
Dr. and Mrs. Ellsworth C. Alvord, Jr.	Mr. Peter Goldman
Robert M. Arnold	Mrs. Coe V. Malone
Mr. and Mrs. Jeffrey H. Brotman	David and Sally Maryatt
Mary Alice and Dick Cooley	Byron R. Meyer
Jane and David R. Davis	Robert and Connie Nowinski
Mr. and Mrs. Robert B. Dootson	Ruth J. Nutt
Mrs. Bryant R. Dunn	Gladys and Sam Rubinstein
Barbara and Stephen Duzan	Foundation
Mr. and Mrs. Kenneth R. Fisher	Herman and Faye Sarkowsky
Marsha Sloan Glazer	Mr. and Mrs. Stanley D. Savage
Mr. and Mrs. Joshua Green III	Mr. and Mrs. Douglas
Dr. and Mrs. Thomas Griffin	Scheumann
Mr. and Mrs. Gerald Grinstein	Jon and Mary Shirley
Mr. and Mrs. Max Gurvich	Frank and Harriet Shrontz
Mr. and Mrs. Marshall Hatch	Mr. and Mrs. Langdon S.
Mr. and Mrs. John H. Hauberg	Simons, Jr.
Mr. and Mrs. Richard Hedreen	Kayla Skinner
Mr. and Mrs. Luther S. Helms	Mr. and Mrs. Vinton H.
Mr. and Mrs. Albert S. Kerry, Jr.	Sommerville
Mrs. Janet W. Ketcham	Dr. and Mrs. George E. Taylor
	Dean and Mary Thornton
	Mr. and Mrs. Bagley Wright
	Mr. and Mrs. Howard S. Wright
	Mr. and Mrs. T. Evans Wyckoff

ANNUAL FUND DONATIONS KEY TO MUSEUM'S SUCCESS

Under the leadership of co-chairs P. Cameron DeVore and Ann P. Wyckoff, the Annual Fund campaign raised \$730,000, which provided vital funding for education programming, special exhibitions, conservation projects, and curatorial activities. We gratefully acknowledge the 2,686 donors to the Annual Fund for their commitment to excellence at the Seattle Art Museum.

Director Mimi Gardner Gates helps at an ArtStars workshop



"The curators' talks were very interesting; I gained a lot of confidence in public speaking. Thank you for this opportunity."

—Aira Omaraum, ArtStar student

The ArtStars student program was one of the year's exciting new education initiatives. The comprehensive program, partially supported by Annual Fund donors, provided hands-on experience with Asian crafts, increased student enthusiasm about art and history, and built self-confidence.

ANNUAL FUND DONORS

The Seattle Art Museum gratefully acknowledges the following individuals who supported the 1995-1996 Annual Fund campaign. (Museum trustees and emeritus trustees are marked in italics.)

ANNUAL FUND DONORS \$10,000-\$24,999

Anonymous
Dr. and Mrs. Ellsworth C. Alvord, Jr.
Mr. and Mrs. Jeffrey H. Brotman
Mr. and Mrs. William H. Gates III
Dr. and Mrs. Thomas Griffin
Mr. and Mrs. Gaither M. Kodis
Mrs. George H. Parsons
Mrs. John S. Robinson
Mr. and Mrs. Douglas Scheumann
Jon and Mary Shirley
Marian E. Smith
Dean and Mary Thornton
Mr. and Mrs. Bagley Wright
Helen L. Yeakel

ANNUAL FUND DONORS \$5,000-\$9,999

Don G. and Jane Markham Abel
Marjorie and Michael Alhadeff
Chap and Eve Alvord
Robert M. Arnold
Mr. Prentice Bloedel
Mary Alice and Dick Cooley
Mrs. Frederick W. Davis
Jane and David R. Davis
Mr. and Mrs. Robert B. Dootson
Mr. Rudolph W. Driscoll, Jr.
Mrs. Bryant R. Dunn
Ms. Marian M. Ewing
Mrs. Paul S. Friedlander
Marsha Sloan Glazer
Mr. and Mrs. Gerald Grinstein
Mr. and Mrs. Luther S. Helms
Mr. and Mrs. Albert S. Kerry, Jr.
Mr. C. Calvert Knudsen
Ms. Martha Kongsgaard and Mr. Peter Goldman
Mrs. Coe V. Malone
Byron R. Meyer
Robert and Connie Nowinski
Herman and Faye Sarkowsky
Mr. and Mrs. Stanley D. Savage
Mr. and Mrs. Langdon S. Simons, Jr.
Kayla Skinner
Dr. and Mrs. George E. Taylor
Mr. and Mrs. Howard S. Wright
Mr. and Mrs. T. Evans Wyckoff

ANNUAL FUND DONORS \$2,500-\$4,999

Anonymous
Hugh J. Ferguson
Mrs. Donald G. Graham, Sr.
Mr. and Mrs. James Hawkanson
Mr. and Mrs. Richard Hedreen

Mrs. Frances L. Hilen
Fred and Belle Maxwell
Mr. and Mrs. Furman C. Moseley
A. and T. Shemanski Trust
Roberta M. Sherman
Mr. Richard L. Weisman and Mrs. Vivien Lesnick Weisman

ANNUAL FUND DONORS \$1,000-\$2,499

Anonymous (3)
Mr. and Mrs. Richard R. Albrecht
Margaret A. Allison
Lucius and Phoebe Andrew
Rosa Ayer
Mr. F.S. Bayley
Mr. Mitchell T. Bowie
Mr. Paul Brainerd
Steve and Judy Clifford
Dr. and Mrs. Oliver E. Cobb
Ellen and Phil Collins
Mrs. Wetherill Collins
Flora Correa Benaroya
Mr. and Mrs. Robert W. Cremin
Mr. and Mrs. P. Cameron DeVore
Mr. Frank A. Dupar, Jr.
Mrs. Marjorie Edris
Helen G. Eisenberg
Barry E. and Jo Ann Fetterman
Kathryn and Norman A. Gerlich

Mr. and Mrs. Stanley D. Golub
Margaret J. Graham
Mr. and Mrs. Tod R. Hamachek
Mr. and Mrs. Ron B. Hart
Mr. and Mrs. John H. Hauberg
Mr. William A. Helsell
Mr. Harold W. Hill and Mrs. Mary Frances Hill
Mr. and Mrs. John Hough
Mr. Henry James and Dr. Mary Ann James
Stuart C. and Joyce Johnston
Mr. and Mrs. Jay Jones
Charles and Roberta Katz
Peter and Mary Kerr
Mrs. Janet W. Ketcham
Mrs. Henry H. Ketcham, Jr.
Nikey and Gene Key
Mrs. Gerald Kravik
Keith and Joan Larson
Mr. and Mrs. Leon Lee
Mr. E. W. Littlefield, Jr.
Janet and Gordon Livengood
Mr. and Mrs. David E. Maryatt
Mrs. Margaret McEachern
Mrs. F. Melville Milby II

John and Barbarann Moga
Arthur and Ruth Morgan
Mimi Gardner Gates
Sally B. Nordstrom
Mr. and Mrs. James W. P. Olson

Theodore R. Pappas
Mr. and Mrs. Everett Paup
Mrs. Fenton Radford
Brooks and Suzanne Ragen
Mr. Carl J. Renhard
Ms. Jean A. Rhodes
John V. Rindlaub
Mrs. Cecelia S. Roop
H. Stewart and Jean S. Ross
Gladys and Sam Rubinstein Foundation

George and Polly Schairer
Mrs. Morton Schwabacher
Dr. Charles Simonyi
Simpson Reed Fund
Mr. and Mrs. Howard Sloneker
Dr. and Mrs. Meredith P. Smith
Mal and Mari Stammer
Mr. and Mrs. C. Jarius Stratton III
Mr. and Mrs. William K. Street

Samuel and Althea Stroum
Mr. and Mrs. Howard N. Stuverude
Mr. and Mrs. David K.Y. Tang
Mr. and Mrs. Bruce L. Titcomb
George Tsutakawa
Mr. David S. Utterberg and Ms. Nayda Chiongbian
Ms. Marian Van Steenvoort
William P. and Susan H. Vittoe Charitable Fund
Mr. Robert B. Wilson
Mr. and Mrs. Charles Wright

ANNUAL FUND DONORS \$500-\$999

Anonymous
Mrs. Susan A. Adams
Mr. and Mrs. Alfred and Edith Adler
William and Patricia Alberts
Dr. Bruce and JoAnn Amundson
Bob and Clodagh Ash
Linda S. Ayers
Mr. and Mrs. Carl Behnke
Donna Benaroya
Dr. Peter E. Bertozzi, Jr.
Mr. Herman Blumenthal
Mrs. Joyce Boyd
Marilyn Brashen
Helen D. Buck
Janet I. Butler
Mrs. Lorna Carroll
Mr. and Mrs. Robert W. Catterall
Mrs. Jane B. Clapp
Bob and Judy Cline
Mrs. George Davis, Jr.
Muriel and Joseph Diamond
Mrs. Dan A. Duryee
Mr. Frederick Foster
Mr. and Mrs. Thomas B. Foster
Mr. and Mrs. Gary E. Gigot
Ms. Laura B. Gowen



ArtStar Harriet Evans during a family festival that accompanied Adornment for Eternity: Status and Rank in Chinese Ornament

John and Beverly Graham
Ms. Sandra Greenlee and Dr. Ted Greenlee
Mr. and Mrs. Max Gurvich
Duncan A. Haas, Ph.D.
Dr. James W. Haviland
Robert and Donna Hegstrom
Susanne Hubbach
Lyman and Gretchen Hull
Mr. and Mrs. Charles H. Hyde
Mrs. Kyrán E. Hynes
Joseph and Olivia Ishikawa
William M. Jenkins and Ann Ramsay-Jenkins

Mr. and Mrs. John F. Shaw
Helen and Pat Stusser
Frances D. Swift
Mr. and Mrs. Frederick W. Titcomb
L.J. Turner and H.E. Turner
Mary Megrath Turner
Stuart and Betty Turner
Marcia and Dick Walker
Harry and Mary Wappler
George and June Winkels
Sarah Woods
Mr. and Mrs. R. S. Zahniser

ANNUAL FUND DONORS \$250-\$499

Anonymous (4)
Tina and Bob Alexander
Alan and Linda Alhadeff
Kenneth and Marleen Alhadeff
Sital and Betty Alim
Mr. and Mrs. Gilbert Anderson
Clifford and Theodora Argue
Jane Peck Asmun
Bill and Peggy Austin
Dr. Warren Russell Austin
Mrs. John S. Baker
Mrs. Jean G. Barclay
Alta and Stan Barer
Carol Batchelder
Aloise C. Bates
Mr. and Mrs. Raleigh Baxter
James A. Degel and Jeanne E. Berwick
Mr. and Mrs. Clarence A. Black
Mr. and Mrs. David C. Black
Betty L. Blakeney
Herb and Shirley Bridge
Bruce and Pat Budge
Mrs. Madeline R. Burdic
Mr. Louis Burzycki
Bill and Christine Campbell
Mr. Paul Canniff

ANNUAL FUND
DONORS \$250-\$499
(continued)

Bob and Suzanne Carlile
Douglas S. Carmichael and Ruby M. Carmichael
Doris Carrington
Mrs. E. C. Case
Dr. and Mrs. William M. Champion
Kent P. and Barbara Chaplin
Michele M. Coad
Dr. and Mrs. Robert C. Coe
Lois M. Curtis
Mr. and Mrs. Allan Davis
Mr. Ben Davis
Krijn, Judy, Saskia, and Anneke de Jonge
Mrs. Robert DeVito
Dr. and Mrs. R. Hugh Dickinson
Diggs and Jack Docter
Thelma S. Dorsey
Mrs. W. K. Dowd
Laney Doyle
Jeanne E. Drake and William L. O. Graves
Mae and Roberta Dueno
Mrs. Joseph M. Dunn
James H. and Helen M. Elsom
Francisca Erickson
Dan and Nancy Evans
Mrs. Virginia T. Evans
Graham Fernald and Greta Fernald
Allan and Barbara Ferrin
Mr. and Mrs. Glen Fisher
Phelps and Christel Fisher
Sherry Fisher
Alec and Elizabeth Fischen
Roberta Rae Flock
Gay Fortune and John Shimer
Dr. Davis B. Fox and Jill Spitzer-Fox
Ms. Hazel Frossard
John C. Gallup
Gary D. Gayton
Carl and Sally Geist
Mr. Scott Glendinning and Ms. Beverly Gimlin
Eleanor M. Hadley
Cal Hall
Yasuko Honjo Harris
Lars and Claire Hennum
John and Ellen Hill
Dr. Christine K. Ho
Mr. and Mrs. Joseph Holton
Rosemary Horwood
Clare M. Hulbert
Mrs. J. Tyler Hull
Rose Ellen Hunter
Arlene J. Hunter
Carrilou and Wendell Hurlbut
Mrs. F.T. Isaacson
Mrs. Sam Jackson
Norman and Jane Johnston
Christopher and Debra Jones
Mr. and Mrs. Francis Kareken
Mrs. Barbara Kennedy and Mr. John Kennedy
Craig and Karen Kennedy

Dr. and Mrs. John M. Kennelly
Mr. and Mrs. Ralph R. Kleinschmidt
Christopher and Alida Latham
David L. Leavengood and Patricia Leavengood
Mr. and Mrs. Joseph Lein
Delores Leonard and Laurel Leonard
Mr. James W. Leslie and Ms. Jeanne E. Tweten
Marjorie J. Levar
Dr. Joseph P. Leverone, Jr.
Mrs. Waldemar Loacker
Mrs. Walter Lowen
Frank M. Lucia and Vicki Elhoff
Laura E. Mahoney
Mr. and Mrs. Patrick Mallahan
Jackie and Peter Mansfield
Judsen Marquardt
Mr. and Mrs. Ben Masin
John and Burdette McClelland
Mrs. Marian E. McCutcheon
George and Barbara McDonald
Mr. and Mrs. Hugh D. McGuinness
Pipena Klieros Mercouriadis
Mr. and Mrs. Richard W. Middleton
Dr. Pamela and Dr. Donald Mitchell
Elliot V. Mock
Ms. Carol Mohler and Ms. Hope Mohler
Mrs. Charles H. Morse Jr.
Donna L. Mott
Dr. and Mrs. Marr Mullen
Mrs. Lucia M. Navarre Erickson
Beth and Fred Nelson
Mr. and Mrs. John F. Nesholm
Mrs. Alexander Niven
Dr. and Mrs. Hugh Nuckols
Kathleen B. Ogle
Mrs. Charles Osborn
In memory of Mario Paprocki
William and Janet Pauli
Arthur and Linda Pederson
Mr. and Mrs. James K. Penfield
In memory of Joyce Fowler
Perry Connie Phelps
Mr. and Mrs. James C. Pigott
Mr. and Mrs. Gordon D. Plume
Mr. and Mrs. Brian Pollack
Joy and Jim Presley
Mr. and Mrs. Herbert Pruzan
Greg and Megan Pursell
Andrea and Alan Rabinowitz
Mr. and Mrs. John W. Reynolds
Eloise and Glen G. Rice, MD
Mrs. H. M. Richards
Mr. George Richardson, Jr. and Mrs. Mary Louise Richardson
Marian N. Ritter
Georgeanne and Jon Rosen
John and Jane Sacia
Mrs. Mary Sainsbury
Werner E. and Joan Samson
Marcia H. Sanford
Dr. Neil F. and Sari Rose Schneider
Julie and Jeff Schoenfeld
Max Schreiner

Mr. and Mrs. Gerard Schwarz
Dr. and Mrs. Belding H. Scribner
James Sells and Elizabeth Sells
Dr. and Mrs. Thomas H. Shepard
John C. Siegler and Alexandra E. Read, MD
Helen V. Smart
Mr. Phillip Soth
Dr. and Mrs. Gerald Sparling, Sr.
Mrs. John F. Steen
Donald G. Steffes
Mr. and Mrs. Joseph W. Sterne
Gretabelle Stimson
Mr. Robert Story and Mrs. Ethel McCroskey Story
Frank D. Stout
Mr. and Mrs. Katsumi Tanino
Dr. and Mrs. Warren D. Taylor
Ms. Gillian M. Teichert
Mr. and Mrs. Robert W. Thomas
Patricia M. Thorpe
Mrs. Merna Trowbridge
Dale E. and Leone Turner
Mr. and Mrs. Howard W. Tuttle
Shirley and David Urdal
Mr. Nicholas J. Utzinger and Mr. John Rochford
Mrs. Robert R. Waltz, Sr.
Ramona and Herbert H. Warrick
Roberta Weeks
Drs. Gail and William Weyerhaeuser
Barbara Steckel White
Mr. and Mrs. Gregory Whitten
Mr. and Mrs. David W. Wiley
Mr. Welles R. Wiley
Robert and Judith Winquist
Linda L. Wise
Neva D. Wiseman
Mr. and Mrs. Thomas R. Wood
Mr. and Mrs. J. Lawrence Wright
Mr. and Mrs. Winslow W. Wright
Judith P. Yeakel
Mr. and Mrs. Marcus L. Zanner
Ms. Hazel Zuvela

ANNUAL FUND
DONORS \$150-\$249

Anonymous (2)
Mr. Ike Alhadeff
Priscilla Alsip
John and Merritt Atwood
Mr. Kris K. Barker and Ms. Suzanne M. Barker
Dr. and Mrs. Robert H. Barnes
Renate Bartl and Marion Bartl
Ruthanna Bayless
Mr. and Mrs. Stephen J. Beaudry
Mr. and Mrs. William M. Black
Beverly Bodansky and David Bodansky
Philip and Eleanor Boren
Ms. Dorothy B. Bradbury
Wilma Bradley
Mrs. Ann S. Buckner
Mr. Rudolph Bundas
Dr. and Mrs. Ernest Burgess
Ms. Ruth Butterfield and Mrs. Mary Batie

J.C. Cannon
Dr. and Mrs. David P. Christie
Mr. Jon M. Christoffersen and Mrs. Joan Christoffersen
Mr. and Mrs. Rex W. Clark
Dr. and Mrs. James Coatsworth
Eleanor and Julian Cohon
Fred and Marge Dau
Verta and David Driver
Ms. Cheryl L. Earnheart
Mr. T. Jefferson Eby III and Ms. Zartouhi Dombourian-Eby
Ms. Dorothea H. Ekholm
Herbert and Alberta Ellison
Mr. Steven M. Epp
Lee E. and Dorothy H. Fickle
Charles and RoseAnn Finkel
Mr. and Mrs. G. O. Fisher
Mrs. Charles Genther
J. W. Greger
Ms. Susan Hada
Dr. John M. V. Hagen and Mrs. Dorothy F. Hagen
Jim and Shirlee Hall
Mr. and Mrs. Andrew T. Harris
Dr. Tia Higano and Dr. Jack Singer
Ms. Suzanne Hittman
Mr. Fred W. Hoefler
Mr. and Mrs. William D. Hood
Mr. and Mrs. William W. Hoppin, Jr.
Mrs. Fred R. Huey
Jim and Dorothy Hussey
Mr. and Mrs. Robert Hutton
Mr. Dean M. Ishiki
Japanese American Chamber of Commerce of Washington State
Dr. Charles A. Kane
Mrs. J. W. Keithan, Jr.
Mr. Ian R. Kennedy and Ms. Michele Drayton
Helen M. Kersten
Mrs. Fredric Kettenring
Evelyn and Syemour Klebanoff
Jacob and Gwen Lawrence
Mary and Chris Lawrence
Ms. Janis Laybourn and Mr. Gene Methven
Lucile M. Wilcox-LeSourd
Mr. Thomas Lee and Ms. Gretchen Dingman
Drs. Henry and Nancy Lennstrom
Mr. and Mrs. Don Lewis
Richard Malzahn and Joan Malzahn
Mr. and Mrs. David Mattson
Mr. and Mrs. Emmett E. McInnis, Jr.
Mr. James McKendry
Del and Janet Miller
Mr. and Mrs. Roger Miller
Ms. Betty E. Moser
H. Willard Nagley II
David and Robin Nelson
Mr. Vo Nguyen and Ms. Sonia Lim
Mrs. Ann L. Nieder

Lack of space prevents us from listing the more than 2,000 donors who each gave gifts of up to \$149 in support of the Annual Fund.

Dr. and Mrs. Martin J. Nigrelle
Mrs. Sharleen Noonan
Dr. and Mrs. Alvin H. Novack
Mr. and Mrs. Edward Nowogroski
Dennis and Susan Okamoto
Mrs. Chester Paulson
Mr. and Mrs. William D. Pettit, Jr.
Ms. Judith K. Pierce and Dr. John R. Walter
Mrs. Roland Pinkham
Mr. and Mrs. Robert Pollock
Barbara M. Purdue
Susan Rakley and Kevin Judge
Teresa and Geoffrey Revelle
Ms. Paula Riggert and Mr. Tom Grismer
Travis and Sharlene Rivers
Dr. and Mrs. Richard Roberts
Mr. and Mrs. Hank Robinett
Douglas W. Saugen and Vickie L. Saugen
Mrs. Doris Schaefer and Mr. Robert E. Schaefer
Robert E. Schultz
Mr. Julius J. Schussler and Mrs. Mae Belle Schussler
Dr. Sidney M. Schwab and Ms. Judith M. Schwab
Joan and Donald Seaton
Louise E. Shaffrath
Alice and Arthur Siegal
Mrs. Sonia Spear
Mr. Myron J. Spring and Mrs. Ruth M. Spring
Mr. and Mrs. David E. Stalter
Neal and Nan Sullins
Mr. Donald A. Swanson and Ms. Barbara White
Mrs. Judy Pigott Swenson and Mr. Darryl Swenson
Mr. and Mrs. Bobby Takatsuka
Mrs. Lola V. Tennant
Dr. and Mrs. E. D. Thomas
Jack and Gail Thompson
Ms. Sheila K. Thorson
Ms. Eve C. Van Rennes and Dr. A. B. Van Rennes
Mrs. Nancy K. Welliver
Lynne Werner and David Olsho
Mr. Alexander F.C. Williamson
Mrs. James I. Williamson
Mrs. Naomi S. Wilson
Dr. and Mrs. H. Richard Winn
Ms. Georgia R. Wirth
Mr. and Mrs. J. Knox Woodruff
Deanna D. Young
Ms. Marie Ramstead Zobrist

PREMIER MEMBERSHIP

Membership in the Seattle Art Museum's premier categories offers a range of exclusive events, unequaled travel opportunities, increased benefits, unique exposure to art, and greater access to the social, cultural, and educational life of the museum.



GOVERNORS

Members of this foremost membership group traveled to New York in May with Mimi Gardner Gates and Patterson Sims for an art-infused tour that featured private collection visits, behind-the-scenes museum and gallery tours, and special invitations to premier openings.

REGENTS

One highlight of the Regents' event-filled year was the First-Night Preview of *Beyond the Tanabata Bridge*, which included a tea ceremony demonstration, Japanese dancers, an elegant candlelit dinner on the Grand Stairway, and intimate tours led by SAM curators and Bagley Wright, the major donor of textiles in the exhibition.

AMBASSADORS

Distinguished as Director Mimi Gardner Gates's charter group, the Ambassadors culminated the year with an exclusive private dinner at the home of SAM trustees and renowned art patrons Jane and David R. Davis.

FELLOWS

As one of SAM's most loyal groups of supporters, the Fellows play an important role in the museum. Fellows programming featured luncheons and quarterly curatorial tours, including a behind-the-scenes tour of *Morris Graves: Flower Paintings* by Associate Curator of Modern Art Vicki Halper.

FRIENDS

One of the most active and innovative membership groups, the Friends enjoyed a lecture series on *Art in Architecture* and the *Art in Landscape Garden Tours*.

More than 5,000 new members joined SAM this past year, helping close the year with 21,500 museum members.

Membership dues provided \$1,980,000 to support museum operations.

Mrs. Roy Nutt
Mr. and Mrs. Theodore R. Pappas
Mr. and Mrs. Everett P. Paup
Mr. and Mrs. James C. Pigott
Mrs. John S. Robinson
Mr. and Mrs. Sam Rubinstein
Mr. and Mrs. Herman Sarkowsky
Mr. and Mrs. Douglas Scheumann
Mr. and Mrs. Jon Shirley
Dr. Charles Simonyi
Mr. Patterson Sims and Ms. Katy Homans
Mrs. David E. Skinner
Mr. Stuart M. Sloan
Ms. Marian E. Smith
Mr. and Mrs. Vinton H. Sommerville
Mr. and Mrs. David G. Sprague
Mr. and Mrs. Harold E. Stack
Malcolm T. Stamper and Mari Stamper
Mrs. Marvel Stewart
Dr. and Mrs. George E. Taylor
Dean D. and Mary Thornton
Mr. Richard L. Weisman and Mrs. Vivien Lesnick Weisman
Mr. and Mrs. Bagley Wright
Mr. and Mrs. Howard S. Wright
Mr. and Mrs. T. Evans Wyckoff

Mrs. Thelma S. Dorsey
Mr. and Mrs. Robert B. Dunn
Mr. Barney A. Ebsworth and Mrs. Pam Ebsworth
Mr. and Mrs. Eugene Eldridge
Mr. and Mrs. Frank E. Everett, Jr.
Mr. and Mrs. George Fahey
Mr. Hugh S. Ferguson
Mrs. Albert O. Foster
Mr. and Mrs. Thomas B. Foster
Mrs. Paul S. Friedlander
Ms. Polly Friedlander
Mr. and Mrs. Peter Garrett
Mr. and Mrs. D. Wayne Gittinger
Dr. and Mrs. Charles F. Gravenkemper
Dr. and Mrs. Thomas Griffin
Mr. and Mrs. Hamilton R. Harris
Mr. and Mrs. Ron B. Hart
Mr. and Mrs. Allan Harvey
Mr. and Mrs. James C. Hawkanson
Mr. Roger J. Heinen, Jr. and Mrs. Marny Heinen
Mr. and Mrs. Dan F. Henderson
Mrs. Frances L. Hilen
Mr. and Mrs. Lynn P. Himmelman
Mr. and Mrs. Patrick Hughes
Mrs. Kyran E. Hynes
Mr. William M. Jenkins and Mrs. Ann Ramsay-Jenkins
Mr. and Mrs. Stuart C. Johnston
Mr. and Mrs. Jay Jones
Mr. and Mrs. Charles Katz, Jr.
Mr. and Mrs. Peter Kerr
Ms. Lucia Lawrence Kirsch and Mr. Lloyd Kirsch
Allan J. Kollar and Mary J. Kollar
Mrs. Mary Lou Kravik
Mr. and Mrs. E. Keith Larson
Mr. James W. Leslie and Ms. Jeanne E. Tweten
Mr. Mark B. Levine
Mr. and Mrs. James Lockwood III
Mr. and Mrs. Richard Loeb
Dr. and Mrs. Stephen B. Loeb
Mrs. Jacqueline C. MacRae
Mrs. Marion Gilbert Mann
Mr. John E. McCaw, Jr.
John M. McClelland and Burdette McClelland

REGENTS

Mr. and Mrs. Don G. Abel
Mr. and Mrs. Richard R. Albrecht
Mr. and Mrs. James E. Allison
Mr. and Mrs. Robert W. Ash
Mr. and Mrs. Charles Barbo
Mr. and Mrs. Thomas W. Barwick
Mr. and Mrs. Raleigh Baxter
Mr. F. S. Bayley
Mr. and Mrs. Robert J. Behnke
Mr. and Mrs. Roger Belanich
Mrs. Betty L. Blakeney
Mr. Herman Blumenthal
Mr. Richard M. Bressler and Mrs. Judith Fong Bressler
Ms. Jeanne Campbell
Mr. and Mrs. Steven A. Clifford
Dr. and Mrs. Alexander Clowes
Dr. Oliver E. Cobb and Mrs. Pamela F. Cobb
Mr. and Mrs. Richard P. Cooley
Mrs. Flora Correa Benaroya
Mr. and Mrs. Cheney Cowles
Mr. and Mrs. Brewster C. Denny
Mr. and Mrs. P. Cameron DeVore
Mr. and Mrs. Robert B. Dootson

REGENTS (continued)
 Mrs. Gertrude Mesher
 Mr. Byron R. Meyer
 Mr. and Mrs. Furman C. Moseley
 Mr. and Mrs. Assen Nicolov
 Dr. Charles Nolan and Mrs. Eleanor Nolan
 Mr. and Mrs. John N. Nordstrom
 Mr. and Mrs. Edward Nowogroski

Mr. David S. Utterberg and Ms. Nayda Chiongbian
 Mr. and Mrs. R. Duke Watson
 Mr. David R. Watt and Mrs. Romayne Watt
 Mr. and Mrs. Robert Denny Watt
 Mr. and Mrs. Griffith Way
 Mrs. Judith A. Whetzel and Mr. Jonathan F. Whetzel
 Mrs. DeWitt Williams
 Mr. Robert B. Wilson

Jon H. and Diane E. Knoll
 Mr. and Mrs. Rhoody R. Lee, Jr.
 Mrs. Waldemar J. Loacker
 Richard W. Luce and Beverly J. Luce
 Mrs. Geraldine Lucks
 Mr. and Mrs. Kirby McDonald
 Glen and Alison Milliman
 Dr. Gail N. Morgan
 Miss Anne Parry
 Mrs. George Parsons
 Mr. and Mrs. Ancil H. Payne
 Mr. and Mrs. Cornelius J. Peck
 Mr. and Mrs. James K. Penfield
 Mrs. Christine Perry
 Mr. and Mrs. John D. Pomfret
 Mr. and Mrs. William G. Reed, Jr.
 Mr. Philip E. Renshaw

Dr. Stephen Anderson and Mrs. Kathy Anderson
 Mr. and Mrs. Edward W. Andrews, Jr.
 Mr. F. Andrews
 Michael J. Audain and Yoshiko Karasawa
 Ms. Mardonna Austin-McKillop
 Mr. and Mrs. Stan Barer
 Mr. Eric Barkan and Ms. Gail Bankovich
 Mr. Thomas S. Bayley
 Mrs. Frank W. Beatty, Jr.

Mr. and Mrs. John P. Cook
 Mrs. and Mrs. Michael Cooper
 James D. Cullen and Wendy S. Cullen
 Mr. John Dagres and Mr. Jack Odell
 Ms. Marilyn E. Dainard
 Mr. A. E. Daniel and Mrs. Vasantha C. Daniel
 Mr. and Mrs. John Handley Davis
 Mr. and Mrs. Jack N. Day
 Col. and Mrs. Josef Diamond

Mr. John Griswold and Mrs. Lois Griswold
 Mr. Alan Grupe
 Mr. and Mrs. Mark R. Guidry
 Ms. Mary B. Gust and Mr. Kerry A. Gust
 Duncan A. Haas, Ph.D.
 Miss Deborah Haensli and Mr. Randy Dixon
 Dr. and Mrs. George A. Hall
 Mr. and Mrs. Bert Hambleton
 Ms. Lenore Hanauer
 Mr. Jeffrey Hanna
 Mr. John M. Harding and Mrs. Judy Harding
 Mrs. Louise G. Harper and Mr. Theodor Schuchat
 Mr. and Mrs. Emmett S. Harrington
 Mr. and Mrs. W. Alden Harris
 Mr. and Mrs. Robert M. Hessel

Mrs. Lolita M. Lanning and Mrs. Marisa H. Lanning
 Dr. Kathie G. Larsen and Dr. William L. Rankin
 Mary and Chris Lawrence
 Mary K. Lea and Stephen Lea
 David L. Leavengood and Patricia Leavengood
 Mr. and Mrs. Roy Leventhal
 David and Susan Lindsey
 Mr. and Mrs. Harry Lipsett
 Mr. E. W. Littlefield, Jr.
 Ms. R. Gloria Lobb
 Ms. Betty L. Lock and Mr. Randall Spaan
 Mr. and Mrs. Bruce C. Lorig
 Mr. William G. Lucks
 Wah and May Lui
 Ms. Nadine Lukoff
 Dr. Kathleen Mailer
 Mrs. Coe V. Malone
 Mr. and Mrs. Stuart K. Mandel

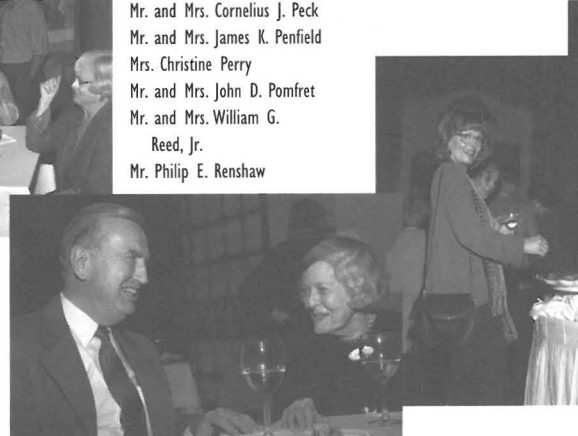
Mrs. Ann W. Pascoe
 Mr. and Mrs. Lindley G. Paskus
 Margaret A. Pearson
 Mr. and Mrs. Arthur M. Pederson
 Dr. Richard Pelman and Dr. Sally Browning
 Ron and Janice Perey
 Mr. David Perlin
 Mr. G. Christopher Peters and Mrs. June Peters
 Ms. Linda P. Peterson and Mr. Ralph T. Peterson
 Ms. Mary Pigott
 Mr. and Mrs. Stuart Prestrud
 Mr. and Mrs. Andrew Price, Jr.
 Mr. and Mrs. John P. Privat
 Mr. and Mrs. Herbert Pruzan
 Mr. and Mrs. John W. Purvis
 Cynthia Putnam and Mark Groudine
 Ms. Maryan E. Reynolds
 Jeffrey and Katie Rhodes
 Dr. Glen G. Rice and Mrs. Eloise B. Rice
 Mrs. H. M. Richards
 Ms. Marian N. Ritter
 Mr. and Mrs. J. Thurston Roach
 Dr. and Mrs. Richard W. Roberts

Mr. and Mrs. Donald G. Steffes
 Dr. Michael Steiner
 Ms. Patty Stonesifer and Mr. Rob Stonesifer
 Jessimai and Byron G. Strange
 Mr. and Mrs. Daniel M. Streissguth
 Ms. Elaine Stucker
 Mr. and Mrs. Jeffrey Sullivan
 Ms. Helen Tall
 Mr. and Mrs. Katsumi Tanino
 Ms. Gillian Teichert
 Daniel and Paula Temkin
 Dr. Lore Tenckhoff and Dr. Henry Tenckhoff
 Dr. Michael P. Theisen and R.S. Jones
 Mr. H. Dale Thompson and Ms. Gina Campanella
 Ms. Patricia M. Thorpe
 Ms. Veronique Estelle Thurston
 Mr. and Mrs. Donald F. Todd
 Mr. and Mrs. John T. Toland
 Dr. and Mrs. A. C. Torgerson
 Mr. and Mrs. Irwin L. Treiger
 Mr. Christopher H. Troth and Ms. Mary E. Jerome
 Mr. Gerard Tsutakawa and Mrs. Judith Tsutakawa
 Ms. L. J. Turner and Mr. Henry E. Turner

Ron and Carolyn Woodard
 Mr. and Mrs. Willard J. Wright
 Mr. and Mrs. R. S. Zahniser
 FRIENDS
 Mr. Peter C. Acker
 Ms. Diana Andonian Ackerley and Mr. Christopher H. Ackerley
 Mrs. Rose B. Alhadeff-Newhouse
 Dr. Michele Asmuth
 Mr. and Mrs. Lawrence B. Bailey
 Mr. Gordon L. Ballentine and Ms. Michelle Grey
 John and Nona Barker
 Jon and Julie Barwick
 Mr. John A. Bates and Ms. Carolyn Corvi
 Dr. Sam Baumann and Mrs. Gloria Baumann
 Mr. Douglas C. Bayley and Mrs. Mary Murfin Bayley
 Mr. and Mrs. Watson Blair
 Mr. and Mrs. Philip J. Boren
 Mr. Adam Brotman
 Mr. and Mrs. V. Jay Broze
 Mr. William L. Bryant II and Ms. Barbara Feasey
 Ms. Mickie L. Buckley
 Mr. Mark R. Busto and Ms. Maureen Lee
 Mr. and Mrs. Daniel Byrne
 Mr. and Mrs. Terrence M. Byrne
 Mr. and Mrs. Peter D. Byrnes
 Mrs. Mary Anna Torres Calderon
 Mr. David Callan
 Mr. Joseph Campos
 Dr. Gordon Carlson and Dr. Dorothy Carlson
 Ms. Nancy M. Carr
 Mrs. Elwell C. Case
 Ms. Susan C. Cathcart
 Mr. Philip Chanen and Dr. Audrey W. Chanen
 Melanie Chenaour and Roy Chenaour
 Ms. Margaret Clapp
 Ms. Jane Cowles and Ms. Ann Stephens
 Ms. Liz Crowell
 Mr. David Curtis and Ms. Alison Gilligan
 Dr. and Mrs. Robert W. Day
 Ms. Maria J. Denny
 Mr. Richard S. Devore
 Mr. and Mrs. James A. Dunnam
 Mrs. Janet R. Erskine
 Mr. William B. Evans and Ms. Yvonne E. Evans
 Mr. Terry J. Finn and Mrs. Linda Toschi Finn



SAM's members' parties were smashing successes



Photos: Julie Fiset

Dr. and Mrs. Lary S. Dobbs
 Mrs. Maggie M. Dorsey
 Mr. James B. Douglas and Mrs. Phyllis Douglas
 Ms. Katherine Downie
 Dr. Fred M. Drennan and Dr. Teresa Massagli
 Mrs. Marjorie Edris
 Mr. Rick Edwards
 Mrs. Helen G. Eisenberg
 Mrs. Herbert Ellison
 Mrs. Francisca Erickson
 Mrs. Virginia G. Evans
 Mr. and Mrs. Abe Fallick
 Mr. and Mrs. James R. Faulstich
 Graham Fernald and Greta Fernald
 Mr. and Mrs. Allan H. Ferrin
 Mr. and Mrs. G. O. Fisher
 Mrs. Peter Fisher
 Mr. and Mrs. Rynold C. Fleck
 Mr. Robert L. Fletcher and Hon. Betty B. Fletcher
 Ms. Cathryn Fortune and Mr. John Shimer
 Dr. Davis B. Fox and Mrs. Jill Spitzer-Fox
 K. R. and Josephine Frandsen
 Dr. Charles French and Mr. Greg Meredith
 Ms. Pauline H. Gardner
 Mr. Gary D. Gayton
 Mr. and Mrs. Carl W. Geist, Jr.
 Mr. Max E. Gellert and Mrs. M. Carol Gellert
 Mr. and Mrs. Gary E. Gigot
 Robert and Eileen Gilman
 Mrs. Earle Giant
 Mr. Scott Glendinning and Ms. Beverly Gimlin
 Mr. Edward P. Goodrich
 Mr. and Mrs. H. Gorlick
 John R. Graham and Beverly Graham
 Ms. Grieshaber-Otto
 Dr. Mary Griffiths and Dr. Gordon Griffiths
 Mrs. Miller N. Griffiths

Mr. and Mrs. James W. P. Olson
 Mr. and Mrs. Melville Oseran
 Mrs. Henry B. Owen
 Mr. and Mrs. Sheffield Phelps
 Mr. and Mrs. Charles M. Pigott
 Mr. Michael J. Pigott and Mrs. M. J. Pigott
 Mrs. Jean Radford
 Mr. and Mrs. Brooks G. Ragen
 Mrs. William G. Reed
 Mr. John A. Reed and Ms. Karen A. Overstreet
 Ms. Jean A. Rhodes
 Mrs. Marguerite Rickey
 Mr. John V. Rindlaub and Mrs. Sarah Rindlaub
 Mr. and Mrs. Herbert Rosen
 Mr. and Mrs. Leslie Rosenberg
 Mr. and Mrs. George F. Russell, Jr.
 Mr. and Mrs. Stanley D. Savage
 Ms. Sylvia Schoenfeld
 Ms. Roberta Sherman
 Mr. and Mrs. Langdon S. Simons, Jr.
 Mr. and Mrs. W. Hunter Simpson
 Colleen and Kevin Stamper
 Mr. and Mrs. C. Jairus Stratton III
 Mr. and Mrs. William K. Street
 Mr. Richard Stroble and Mrs. Hope Stroble
 Ms. Cynthia Stroum
 Mr. and Mrs. Samuel N. Stroum
 Mr. and Mrs. Robert W. Thomas
 Ms. Susan Thurston
 Mr. and Mrs. Bruce L. Titcomb
 Mr. and Mrs. Joseph H. Tretthewey
 Mr. and Mrs. William L. True

Mr. and Mrs. Charles Wright
 Hal and Linda Wyman
 AMBASSADORS
 Mr. and Mrs. Michael D. Alhadeff
 Mr. and Mrs. Lucius A. Andrew III
 Mr. and Mrs. Joseph Ashley
 Mr. and Mrs. David C. Black
 HRH Michael Boswell-Windsor and Lady Ashley
 Windsor-Kuhn
 Mr. and Mrs. Edgar O. Bottler
 Mr. Paul Brainerd
 Mrs. Mary M. Clise
 Mr. and Mrs. Robert W. Cremin
 Ms. Dottie Cressman
 Dr. and Mrs. R. H. Dickinson
 Mr. Jerry A. Erickson and Mrs. Jan Erickson
 Mr. and Mrs. Barry E. Fetterman
 Mr. and Mrs. Alexander M. Fiskin
 Mr. Tim Ford
 Mrs. Howard A. Frame
 Dr. Mimi Gardner Gates
 Mrs. Anne L. Gerber
 Mrs. Margaret J. Graham
 Mr. Jerry Fulkus
 Mr. Glenn L. Harrington and Ms. Marcia B. Harrington
 Mr. William A. Hessel
 Mrs. Helen Holmlund
 Mr. and Mrs. John Hough
 Ms. Carolyn Hubman
 Mr. Ted Johnson and Mrs. Linda Johnson
 Dr. Charles Kaplan and Mrs. Lillian Kaplan

Mr. Christopher J. Rice
 Dr. and Mrs. John F. Shaw
 Dr. and Mrs. Meredith P. Smith
 Mr. and Mrs. Lin Snapp
 Ruth A. and Max D. Soriano
 Ms. Anne Stevenson
 Mr. Frank D. Stout
 Mrs. Joseph F. Sutter
 Mr. and Mrs. Henry Trubner
 Mr. and Mrs. Stuart W. Turner
 Ms. Marian Van Steenvoort
 Harry and Mary Wappler
 Mrs. Nancy K. Welliver
 Victoria L. Wellman and Howard L. Wellman
 Miss Winifred E. Weter
 Mr. and Mrs. Ian C. Whittaker
 Dr. Mark E. Williamson and Mrs. Karma D. Williamson
 Mrs. Neva D. Wiseman
 Arlene A. Wright
 FELLOWS
 L. J. Aasheim and Glen H. Aasheim
 Mr. Bryan K. Abell and Ms. Elizabeth Mountsier
 Mrs. Charles W. Adams
 Mr. Alfred Adler and Mrs. Edith Adler
 Mrs. Hideko Alber
 Ms. Linda M. Albo and Mr. Joe Albo
 Mr. and Mrs. J. D. Alexander
 Tina and Bob Alexander
 Mr. and Mrs. Ken Alhadeff
 Ms. Jessica R. Allen and Ms. Deborah A. Huntington
 Mrs. William M. Allen
 Mr. and Mrs. Gilbert Anderson
 Mr. John N. Anderson and Mrs. Dorothy Anderson

Dr. Jerome F. Beekman and Mrs. Susan S. Beekman
 Ms. Donna Benaroya
 Alan and Jean Bentsen
 Dr. Herbert Berry and Mrs. Karen S. Berry
 Mr. and Mrs. Alan F. Black
 Mr. Robert Blake
 Mrs. Thomas L. Blakemore
 Mr. and Mrs. E. H. Boulliou
 Mr. Robert A. Boundy and Ms. Barbara J. Martyn
 Mr. Mitchell T. Bowie
 Mrs. Joyce Boyd
 Mrs. Barbara Brunner and Mr. Ray Brunner
 Mr. and Mrs. William A. Bultmann
 Mrs. Madeline R. Burdic
 Dr. Robert J. Burk and Ms. Blair Robbins
 Mr. Louis Burzycki
 Mr. Dan Caldwell and Mrs. Bonnie Brian-Caldwell
 Ms. Shirley Callison
 Mr. William M. Campbell, Jr. and Mrs. Christine A. Campbell
 Ms. Carole M. Candler
 Mr. and Mrs. C. Kent Carlson
 Mrs. Willadee Carlson
 Mr. and Mrs. Robert W. Catterall
 Mr. and Mrs. Melvin C. Chang
 Kent P. and Barbara Chaplin
 Mr. Dale Chihuly
 Mr. Jon M. Christoffersen and Mrs. Joan Christoffersen
 Ms. Kristina Clapp
 Mr. and Mrs. Robert S. Cline
 Dr. and Mrs. James Coatsworth

Mr. and Mrs. Robert Hitchman
 Mr. and Mrs. David C. Hoedemaker
 Dr. and Mrs. Richard A. Hoffmeister
 Mr. and Mrs. Richard S. Holmgren, Jr.
 Mr. Wayne E. Holt and Ms. Phyllis E. Kaiden
 Ms. Carol Hornall and Mr. John Hornall
 Mr. and Mrs. Bruce Hosford
 Mr. and Mrs. and David Hsiao
 Mrs. Fred R. Huey
 Mrs. Clare Hulbert
 Ms. Mary Anne Hull
 Mr. and Mrs. James L. Humphrey
 Mr. William H. Hunt and Mrs. Rosemary L. Hunt
 Mrs. J. P. Hunter
 Mr. Terry Hunziker
 Mr. and Mrs. Charles H. Hyde
 Mrs. F. T. Isaacson
 Mr. and Mrs. Jay Jacobs
 Mr. Charles C. Jenner
 Mr. Lewis H. Johnson and Mrs. Sonia P. Johnson
 Mr. and Mrs. Clayton R. Joyce
 Mr. and Mrs. Francis Kareken
 Mr. and Mrs. Kenyon Kellogg
 Mr. King E. Kelso and Ms. Judy Reavell
 Antoinette S. Kennedy
 Mrs. Barbara Kennedy and Mr. John Kennedy
 Mr. Eugene Key and Ms. Yashti Key
 Mr. and Mrs. Kerry Killinger
 Dr. and Mrs. Albert J. Klemka
 Ms. Patti Knowles
 Mr. and Mrs. Heinrich K. Koehler
 Mrs. George A. L'Abbe
 Kurt Lang and Gladys Engel Lang

Ms. Vicky L. McClung
 Mrs. James D. McCutcheon, Jr.
 Ms. Barbara McDonald and Dr. George McDonald
 Mr. James L. McDonald and Mrs. Charlene McDonald
 Mr. and Mrs. Terence M. McTigue
 Mr. Stephen W. Mellander and Mr. Robert M. Iiams
 Dr. John H. Mensher and Mrs. Gail B. Mensher
 Mrs. Merrienne Metzger-Baby and Mr. F. A. Baby
 Mr. and Mrs. Henry A. Meyers
 Mr. Michael Miller and Ms. Oedipa Maas
 Mr. and Mrs. Roger Miller
 Dr. Donald W. Mitchell and Dr. Pamela Mitchell
 Dr. and Mrs. Robert B. Monroe
 Mr. and Mrs. Arthur Morgan
 Ms. Donna L. Mott
 Ms. Joan Myhre
 Mr. H. W. Nagley II
 Dr. Joseph Newall and Mrs. Carol Newall
 Mr. William Nisen and Ms. Karen Nakagawa
 Dr. Kevin Douglas O'Brien and Mrs. Rena O'Brien
 Mr. and Mrs. Harry J. O'Donnell, Jr.
 Ms. Janice O'Mahony and Mr. Michael J. O'Mahony
 Mr. Larry O'Rourke and Ms. Betsy King
 Mr. Carlos L. Obando and Mrs. Jacqueline Obando
 Mrs. Kathleen B. Ogle
 Mrs. Babo Olanie
 David and Melinda Olson
 Mrs. Patsy T. Omata
 Mr. Ted Osuch and Mrs. Ann B. McCutchan

Mr. and Mrs. Richard W. Roberts
 Mrs. Caryl K. Roman
 Mr. and Mrs. H. Stewart Ross
 Dr. and Mrs. Russell Ross
 Mr. and Mrs. Skip Rowley
 Ms. Loretta Russell
 Dr. Bernice C. Sachs
 Mr. and Mrs. John F. Scacia
 Mr. Sanford Sage
 Allen V. and Jean C. Salsbury
 Marcia H. Sanford
 Mr. Robert M. Sarkis and Mrs. Shake Sarkis
 Mr. and Mrs. Frederick B. Scheetz
 Mr. and Mrs. Robert L. Schwartz
 Ms. Francine Seders
 Mr. John E. Sells and Mrs. Christine Scharff Sells
 Mr. Richard H. Senn and Ms. Barbara Sachs
 Dr. and Mrs. Stephen F. Shea
 Mr. Duane H. Shipman
 Mr. and Mrs. Alex Shulman
 Mr. John C. Siegler and Dr. Alexandra E. Read
 Mr. Greg Simmons and Ms. Julie Simmons
 Mrs. Harry M. Simmons
 Mr. and Mrs. Larry W. Sisson
 Mr. and Mrs. Philip M. Smart, Sr.
 Mr. Wm. Graham Smith and Mrs. Anneli Koskenkyla
 Dr. Mark G. Sollek and Ms. Kimberly A. McNally
 Mr. Phillip Soth
 Mr. Donald E. Spickard and Dr. Joan C. Ullman
 Ms. Sharry Stabbert and Mr. Donald J. Stabbert

Mr. and Mrs. Howard W. Tuttle
 Dr. Steven J. Urbach and Ms. Mary J. Urbach
 Mr. Robert E. Vallat and Mrs. Mary J. Vallat
 Mrs. Jean Viereck and Mr. Robert S. Leventhal
 Mr. David M. Wakazer
 Ms. Margaret Walker
 Mr. and Mrs. Richard E. Walker
 Mr. George Wallerstein
 Mr. David D. Walter and Ms. Wendy Grant Walter
 Mrs. Robert R. Waltz, Sr.
 Herbert H. Warrick and Ramona L. Warrick
 Donald K. Weaver and Evelyn K. Weaver
 Roberta Weeks
 Ms. Deborah Weinstein and Mr. Ronald Weinstein
 Mr. Robert Welden
 Ms. Jane C. Wells
 Mr. Larry W. Wells
 Ms. Annette B. Weyerhaeuser
 Drs. Gail and William Weyerhaeuser
 Mrs. Thomas T. White
 Mr. and Mrs. Gregory Whitten
 Mr. Welles R. Wiley
 Mr. and Mrs. Ray Williams
 Mr. and Mrs. Walter B. Williams
 Dr. Richard A. Willson and Dr. Bettina Willson
 Dr. and Mrs. Edward M. Winskill
 Mr. and Mrs. Leighton P. Wood
 Mr. and Mrs. Thomas R. Wood
 Ms. Joyce Woodard

Ms. Barbara Feasey
 Ms. Mickie L. Buckley
 Mr. Mark R. Busto and Ms. Maureen Lee
 Mr. and Mrs. Daniel Byrne
 Mr. and Mrs. Terrence M. Byrne
 Mr. and Mrs. Peter D. Byrnes
 Mrs. Mary Anna Torres Calderon
 Mr. David Callan
 Mr. Joseph Campos
 Dr. Gordon Carlson and Dr. Dorothy Carlson
 Ms. Nancy M. Carr
 Mrs. Elwell C. Case
 Ms. Susan C. Cathcart
 Mr. Philip Chanen and Dr. Audrey W. Chanen
 Melanie Chenaour and Roy Chenaour
 Ms. Margaret Clapp
 Ms. Jane Cowles and Ms. Ann Stephens
 Ms. Liz Crowell
 Mr. David Curtis and Ms. Alison Gilligan
 Dr. and Mrs. Robert W. Day
 Ms. Maria J. Denny
 Mr. Richard S. Devore
 Mr. and Mrs. James A. Dunnam
 Mrs. Janet R. Erskine
 Mr. William B. Evans and Ms. Yvonne E. Evans
 Mr. Terry J. Finn and Mrs. Linda Toschi Finn

(Background)
 Collage of prints created by SAM art students

FRIENDS (continued)

Mrs. Gloria K. Frazer
Mr. and Mrs. John L. Goodman
Dr. Bert Green and Ms. Alexandra Brookshire
Ms. Jodi Green and Dr. Mike Halperin
Ms. Dianne Halcin

Ms. Peggy McGaw
Dr. and Mrs. Scott McIntyre
Ms. Marianne McLaren
Mr. and Mrs. Harold D. Mitchell
Dr. and Mrs. Alex Moreano
Ms. Kemi Nakabayashi
Nova Fisheries

Mr. and Mrs. Gian-Carlo Scanduzzi
Ms. Cynthia Sears and Mr. Frank Buxton
Anne and Morgan Seeley
Ms. Pamalyn Selle
Ms. Stephanie Smith and Mr. Douglas C. Smith
Mr. Joseph M. Sorrentino and Ms. Linda Sorrentino
Mrs. Jennifer Spain Greene and Dr. James Spain Greene
Mr. and Mrs. David E. Stalter
Ms. Cinnamon Stephens
Ms. Susan Smith Stephens
Mr. Robert Story and Mrs. Ethel McCroskey Story
Mr. Gordon C. Strand
Mr. and Mrs. Mark W. Streissguth
Mr. Robert Strong and Mrs. Kathryn Strong
Dr. V. P. Sybert and Dr. P. H. Byers

Mr. Nicholas J. Utzinger
Mrs. Lori Veytia and Mr. Edgar Veytia
Mr. Bo Weingaertner and Ms. Laura Keehn
Ms. Nancy S. Weintraub
Mr. Richard T. White and Ms. Heiden Moghadam
Lynn T. Wilhoit and Dr. Sheila Lynn Morehouse
Ms. Linda Wise
Mr. and Mrs. Warren Wooster
Mr. H. S. Wright III and Ms. Katherine Ann Janeway
Mrs. Merrill Wright
Ms. Judith Yeakel

(Left) Eduardo Calderón's *Precarious, Paris* (1994) was one of the modern photographs juxtaposed with the 19th-century Japanese prints of Andō Hiroshige in *From the Floating World to the Street* (courtesy William Traver Gallery)

We sincerely apologize if we have misspelled or inadvertently omitted the name of anyone who made a contribution to the Seattle Art Museum between June 30, 1995 and July 1, 1996. Please notify us of any such error by calling (206) 654-3211.



Mr. Prentis C. Hale IV
Ms. Aya Stark Hamilton
Ms. Kathleen Hanlon and Mr. Mark Bickel
Mr. Erik Hanson and Ms. Naomi Nemoto
Mr. Peter M. Hartley and Ms. Sheila B. Noonan
Mr. Denis Hayes and Ms. Gail Boyer
Ms. Josie Hazen
Dr. William V. Healey III
Mr. Robert B. Heilman
Lynne M. and Robert B. Hess
Mr. Robert Holtz and Ms. Cricket Morgan
Ms. Laura Inveen and Mr. Bill Shaw
Mr. and Mrs. Will Jenkins
Mr. and Mrs. Frank W. Kerr
Ms. Cheryl D. King
Mr. and Mrs. Frank R. Kitchell
Dr. Jack Kleinart and Mrs. Layne Kleinart
Mr. William Pattison Kogut
Ms. Martha Kongsgaard and Mr. Peter Goldman
Ms. Carol Kornfeld
Dr. Howard Alan Krouse and Mrs. Christine M. Krouse
Ms. Sharon M. Lee and Mr. Gary Graf
Mrs. Donna M. Lenox
Mr. and Mrs. Don Lewis
Mr. William H. Lindberg
Leo L. Longo and Jacquelyn M. Longo
Mrs. Jennifer MacDonald and Mr. Alan MacDonald
Mr. Rae Mackay and Ms. Kathleen Rockefeller
Mr. and Mrs. Paul D. Mackie
Ms. Lisa Mallo
Christopher Martin
Mr. and Mrs. Ben Masin

Mr. John W. Oblanas and Ms. Laura Macdonald
Mr. and Mrs. Jim R. Odom
Ms. Carole Okamoto
Mr. Gary Owen
Mr. Clyde Pascual
Ms. Lisa R. Pascualy and Mr. Ralph A. Pascualy
Mrs. Chester Paulson
Mr. and Mrs. Louis D. Peterson
Mr. Steven C. Phelps and Mrs. Anne V. J. Phelps
Ms. Suzanne Poppema and Mr. John Cramer
Mr. A. Jenkins Henslee
Mr. Thurman Poston and Ms. Laura Poston
Mrs. Susan Potts and Mr. Bill Potts
Mr. Lloyd W. Powell and Mrs. Sharon Powell
Greg Pursell and Megan Pursell
Mr. and Mrs. William E. Rabel
Ms. Linnea Asplind Riley
Ms. Denise Michelle Rivers and Mr. Timothy P. Meyer
Mr. David L. Roberts
Mr. Larry Rosok and Ms. Teresa Tartaglione
Mr. and Mrs. William D. Ruckelshaus
Mr. David Rude
Mr. and Mrs. Donald E. Rupchock
James E. Rzegocki and Diane E. Rzegocki
Mr. Patrick Sanford and Ms. Kristi Nilson

Andrew Wyeth's *Distant Thunder* (1961) was loaned from a private collection

black & white ball 1996



Photos: Chandler McKaig

SPECIAL EVENTS

This year special events raised \$346,000 for Seattle Art Museum operations. Special events parties, dances, and limited-edition sales enhanced the museum experience for veteran members and brought new members into the museum family.

Welcoming more than 3,200 attendees and raising \$151,000 in net revenue, the Seattle Art Museum's Black & White Ball was an overwhelming success.

IN-KIND CONTRIBUTIONS

Numerous individuals and businesses support the museum with donations of time, goods, or services. Last year, these in-kind gifts reduced the museum's expense budget by more than \$110,000, and contributed substantially to the success of the Black & White Ball, which raised \$151,000.

- | | | |
|--|-------------------------------|---------------------------------|
| AT&T Wireless Services | FASTSIGNS | Picora's NY Pizza and Pasta |
| Abbey Rents | Feather Fantasies | Prop Gallery |
| Ackerley Outdoor Advertising | Fonte Coffee Roaster | Quality Food Centers, Inc. |
| Adriatica Restaurant | Gary Manuel Salon | Red Hook Brewery |
| Ampco System Parking | Graffix | Reser's Fine Foods |
| Argyle Wines | A Grand Affair | The Ruins |
| Alice Bear | Huling Brothers | Salty's on Alki |
| Bernie's Bagels, Inc. | Il Bistro | Seattle Art Museum Cafe |
| Boeing | Jones Soda Company | Seattle Fudge, Inc. |
| Bogle & Gates | K&L Distributors | Seattle Hilton Hotel |
| The Bon Marché | Kaleenka Russian Restaurant | Seattle Weekly/Eastsideweek |
| Borders Books & Music | Kamon on Lake Union | See's Candies |
| Boston Market Homestyle Meals | KCMU 90.3 FM | Sheraton Seattle Hotel & Towers |
| Boyd Coffee Company/Italia | Ken's Cameras | Susan Singleton |
| D'Oro Espresso | KIRO FM 100.7 The Buzz | Snapple Teas and Drinks |
| The Brooklyn Seafood, Steak and Oyster House | KMTT 103.7 The Mountain | Swanson's Nursery & Greenhouse |
| Calistoga Sparkling Water | Koala Fruit Juices | SYSCO Food Services of Seattle |
| Chateau Ste. Michelle | Allan Kollar | T.G.I. Friday's |
| Chutney's | KPLU-NPR, Jazz & Blues 88.5 | Thrifty Car Rental |
| Classic King FM 98.1 | KSTW Channel 11 | Ticketmaster Northwest |
| Coffaro's Bakery | Larry's Markets | Goldie Tobin |
| Cole & Weber | Laura Lee Rose | Todo Wraps |
| Common Meals | Leo Melina Ristorante di Mare | Turgeon-Raine Jewellers |
| Cort Furniture | Christina Lockwood | The Tux Shop |
| Costco | Robert Lyons | Michael van Horn |
| Dahlia Lounge | M.G. Vallejo Winery | Viaggio Coffee |
| Delta Airlines | Metropolitan Catering | Volvic Spring Water |
| Diamond Parking | Mutual Travel | Washington Hill Cellars |
| Eagle Hardware & Garden | Christine Nicolov | Wild Ginger |
| The Famous Northwest Catering Company | Nikko Media Center | Wm. Dierckx Co. |
| | Nordstrom Catering | Wright Runstad and Co. |
| | One Reel | |
| | Perrier Sparkling Water | |

Corporate Memberships raised more than \$200,000 to help support the diverse exhibitions and events presented by the museum.

bringing art and business together

CORPORATE MEMBERSHIP

Seattle's corporate community actively supported SAM through participation in the Corporate Membership Program. Corporations entertained clients and employees during private viewings of special exhibitions and by use of complimentary guest passes. Employees enjoyed year-round free admission with corporate membership cards and discounts in the Museum Store. The museum enthusiastically acknowledges the support of corporate members and their employees.

EXECUTIVE BENEFACTOR (\$7,500)

Microsoft Corporation

BENEFACTORS (\$5,000)

CIGNA Corporation
Key Bank of Washington
Nordstrom, Inc.
SAFECO Corporation
Seafirst Bank
Walker Richer & Quinn, Inc.

CURATORS (\$2,500)

Arthur Andersen & Company
U.S. Bank

PATRONS (\$1,000)

Ackerley Communications
Adobe Systems Incorporated
Airborne Express
Alaska Distributors Company
AT&T Wireless Services
Bank of California
Christensen O'Connor, et al.
Corbis Corporation
Davis Wright Tremaine
Entenmann's/Oroweat
Ernst Home and Nursery
Esterline Technologies
Flow International Corporation
Foster Pepper, et al.
Global Transportation
Gull Industries, Inc.
Immunex Corporation
Key Trust Company
KING Broadcasting
KIRO Inc.
Lane Powell Spears Lubersky
Liberty Equipment & Supply Co.
M. A. Segale, Inc.
Metlife Capital Corp.
The Museum Company
Music-Vend Distributing Co.
MUZAK
National Frozen Food Corp.
Northern Life Insurance
Paine Webber, Inc.
Parker, Smith & Feek

Penwest
Perkins Coie
Piper Jaffray, Inc.
Quality Food Centers, Inc.
The Seattle Times
See's Candies Inc.
Seed and Berry
Shannon & Wilson, Inc.
Sheraton Seattle Hotel & Towers
Simpson Investment Company
Sterling Realty Organization
Tempress
Triple B Corporation
Washington Federal Savings
Washington Natural Gas Co.
Wells Fargo Bank
West One Bank Washington
Woods and Associates
Wright Runstad and Company

SPONSORS (\$500)

ABN AMRO Bank N.Y.
Ackroyd
Alexis Hotel Seattle
American Passage Media Corp.
ARCO
Art Institute of Seattle
Baugh Enterprises
Ben Bridge Jewelers, Inc.
Bennett & Bigelow
Bogle & Gates, P. L. L. C.
Builders' Hardware & Supply
Cable, Langenbach, et al.
Capital Industries, Inc.
Cascade Natural Gas Corp.
Chubb & Son Inc.
Continental Savings Bank
Crowne Plaza Seattle
Dain Bosworth
Edgewater Inn
Ernst & Young LLP
Executive Consulting Group Inc.
Ferguson Construction
Fleetwood Messenger Service
Four Seasons Olympic
Frontier Communications
Gary Bocz Hair Design
Glazer's Camera Supply

Hillis Clark Martin & Peterson
Home Owners Club
Honeychurch Antiques
Horvitz Newspapers, Inc.
Howard Johnson & Company
Icicle Seafoods, Inc.
J.C. Penney Co., Inc.
Johnson & Higgins of WA, Inc.
Jones & Jones
K & L Distributors, Inc.
Key Tower
Laird Norton Trust Company
Lease Crutcher Lewis
McCann-Erickson Seattle
Metropolitan Federal Savings
Mikkelborg Broz Wells & Fryer
Mitsubishi International Corp.
Morrison & Foerster
Mutual Travel Inc.
NBBJ
NC Machinery Co.
Nicholson Manufacturing Co.
Northwest Building Corp.
Olin Defense Systems Group
Olson/Sundberg Architects, Inc.
Ostex International, Inc.
Parker Services, Inc.
Ragen MacKenzie Inc.
Sclater Kimball Architects, PC
Seattle Film Works, Inc.
Seattle Pacific University
Seattle Steam Company
Seattle Leland Interior Design
The Leonhardt Group
Lopez and Fantel
Martin Nelson & Co., Inc.
Meisenbach Capital Management
NW Federal Credit Union
Northwest College of Art
Ogden Murphy Wallace
Oncomembrane, Inc.
Pace International L.P.
Pacific Northwest Bank
Plum Creek Timber, L.P.
PMA Direct Marketing
Primus Communications Corp.
Puget Sound Business Journal
Riddell, Williams, et al.
Rottler Manufacturing

ASSOCIATES (\$250)

Aiken, St. Louis & Siljeg
Allied Signal
Ansel International
Art Wolfe, Inc.
Atlantic Mutual Insurance Co.
Beak Consultants, Inc.
Bonneville Power Admin.
Business Interiors Northwest
Cello Bag Company
Daniel Smith Inc.
Danielson Harrigan & Tollefson
Designhaus, Inc.
The Elliott Bay Book Company
Encore Publishing, Inc.
Evergreen Bank
Fluke Capital Management
Fox's Gem Shop
Gene Juarez Salons, Inc.
Gordon Thomas Honeywell et al.
Health Marketing Solutions, Inc.
Huckell/Weinman Associates
Hugh G. Goldsmith & Assoc., Inc.
Hussmann Corporation
Industrial Systems, Inc.
Kalama Chemical
KCM, Inc.
KPMG Peat Marwick
Kueckelhan, Crutcher & Co.
Kunath Karren Rinne & Atkin
Lanoga Corporation
Barbara Leland Interior Design
The Leonhardt Group
Lopez and Fantel
Martin Nelson & Co., Inc.
Meisenbach Capital Management
NW Federal Credit Union
Northwest College of Art
Ogden Murphy Wallace
Oncomembrane, Inc.
Pace International L.P.
Pacific Northwest Bank
Plum Creek Timber, L.P.
PMA Direct Marketing
Primus Communications Corp.
Puget Sound Business Journal
Riddell, Williams, et al.
Rottler Manufacturing

UNDERWRITERS AND SPONSORS

A heartfelt thank-you to the following for their generous support of exhibitions, programs, and events:
AT&T Wireless Services
The Boeing Company
BMW Seattle
Half Price Books
Lakeside Industries
Mayflower Park Hotel
M.G. Vallejo Winery
Microsoft Corporation
Olympic Medical
Piper Jaffray, Inc.
Port of Seattle
Ragen MacKenzie Inc.
SAFECO Corporation
Seafirst Bank
Turgeon-Raine Jewellers
US West Communications
Walker Richer & Quinn, Inc.



FREE THURSDAYS

More than 51,000 people enjoyed the museum on Free Days this year. In January 1996, SAM's free day changed to the first Thursday of the month, and community response was astounding! Free-day attendance doubled the first two months and has been steadily growing. The change allowed SAM to offer additional free hours at both museums and to complement other First Thursday events downtown. Free Days were sponsored by U.S. Bank through December 1995, and KPLU provided on-air support all year.

THE ART OF JAZZ

Featuring renowned jazz artists, the six Thursday evening concerts offered monthly from January to June were attended by more than 1,500 people. This popular series, now in its fourth year, was generously underwritten by Half Price Books, the Mayflower Park Hotel, and KPLU.



Visitors of all ages enjoyed the return of SAM's own special exhibition *Beyond the Tanabata Bridge*

A TRIUMPHANT RETURN

A phenomenal exhibition of 85 works of art from the museum's unparalleled collection of Japanese folk textiles enjoyed a successful national tour. Organized by the Seattle Art Museum under the stewardship of William J. Rathbun, John A McCone Foundation Curator of Asian Art, *Beyond the Tanabata Bridge: A Textile Journey in Japan* triumphantly returned to Seattle last summer and dazzled visitors at the downtown museum.

Drawn primarily from a major gift to SAM by Virginia and Bagley Wright, *Beyond the Tanabata Bridge* showcased Japanese textiles used in daily life from the late eighteenth to the twentieth century. From durable materials made from the humble *basho* (banana fiber) plant to glamorous brocades and silks, the exhibition encompassed an astonishing range of textures, techniques, and weaving traditions.

The Port of Seattle sponsored the exhibition locally. Through its generous support, the Port honored Nippon Yusen Kaisha (NYK) Line, Japan's oldest and largest shipping company. The exhibition provided an opportunity for the Port and the museum to share Japan's rich textile heritage with residents of the Puget Sound area and visitors from around the globe.

Before coming home to Seattle, *Beyond the Tanabata Bridge: A Textile Journey in Japan* was presented at the following institutions: The Textile Museum, Washington, D.C., the Birmingham Museum of Art, and the Dallas Museum of Art.



PLANNED GIVING

The Legacy Club was established to recognize the generosity and foresight of those who choose to embrace a vision for SAM's future by making a planned gift today. The hallmark of this special group is their commitment to a strong museum and their belief in the intrinsic value of art in our lives. Gifts from Legacy Club members help secure the museum's financial foundation, ensure excellence in our educational and artistic programs, and strengthen our collections. The Seattle Art Museum is most grateful to this group of dedicated friends.

LEGACY CLUB

(*Indicates charter members)
Confidential (7)
*Mr. Robert M. Arnold
Mr. and Mrs. Tom Barwick
Ms. Christi Clark
*Mr. Edward L. Cushman
Mrs. Patricia Denny
Mr. and Mrs. Robert Dootson
*Mrs. Eli Dorsey
*Ms. Ann Eddy
Mrs. Frank E. Everett, Jr.
Mrs. Margery Friedlander
Mr. and Mrs. Kenneth R. Fisher
Mrs. Anne Gerber
Mr. H.T. Gladwin
Mr. and Mrs. Ulf Goranson
Mr. Tedric C. Haggerty
*Mr. and Mrs. Glenn L. Harrington
*Mr. Frank Hart
Mr. and Mrs. John Hauberg
*Mrs. Irving Humber
*Ms. Julia G. Johansen
Mr. Norman J. Johnston and Ms. L. Jane Hastings Johnston

Mrs. Albert S. Kerry Jr.
*Mrs. Coe V. Malone
*Mr. Craig E. Mason
Mrs. Jean Milnor
Mrs. Joseph and Elaine Monsen
Mr. and Mrs. Mel O'Neal
Mrs. Elizabeth Parsons
*Mr. and Mrs. James K. Penfield
Mr. and Mrs. Rex Rathbun
Mrs. John S. Robinson
Ms. Phyllis Rosen
*Mr. and Mrs. Sam Rubinstein
Faye Sarkowsky
Mr. Robert M. Shields
Mr. Howard Silverman
Mrs. David E. Skinner
Mr. Phillip Soth
*Mr. and Mrs. David Sprague
Mr. and Mrs. William K. Street
*Mrs. Margaret Perthou Taylor
*Mrs. Susie Fisher Thornton
Dean and Mary Thornton
Mr. and Mrs. Henry Trubner
Dr. and Mrs. John H. Walker
Mr. and Mrs. Bagley Wright

IN MEMORIAM

Prentice Bloedel
Helen Yeakel

Model of a Dragon Fish (ca. 1820) (above) and Model of Roshi Seated on a Water Buffalo (ca. 1780) on the previous page are netsukes acquired by SAM as a fractional interest and promised gift from Planned Giving Committee Chair Robert B. Dootson and his wife, Honey

BEQUESTS

The Seattle Art Museum received bequests in support of museum programs from the following dedicated individuals. We are privileged to carry on our work in their names.
Alice Bringham
Barbara Hughes Carnahan
Ethel L. Wood
Laureen Gandy
Priscilla C. Klepser
Catherine Zesbaugh

The museum continued its record of balancing operating support and expense, achieving a surplus this year.

Fiscal Year Ending June 30, 1996

The Seattle Art Museum achieved positive financial results again this year, with operating revenue exceeding operating expense.

Total support for operations, including downtown and Volunteer Park museums, Museum Store and Cafe, ancillary groups, and restricted fund activity, increased by more than \$400,000, to approximately \$9.5 million. Strong individual support of the museum resulted in increased annual fund gifts, membership revenue, and admissions revenue. Fundraising event revenue was substantially higher due to this year's Black & White Ball. Investment income also increased substantially as a result of endowment growth. Restricted fund activity, reimbursements, and other income decreased from the prior year.

Operating expense decreased slightly from FY95, and totaled approximately \$9.2 million. Facility and security expense decreased as building efficiency continued to improve. Scheduling SAM's own *Beyond the Tanabata Bridge* helped decrease the expense of museum and curatorial services this year. Supporting expenses (administration and development) were higher, but included the expense of the Black & White Ball.

Investments for the benefit of the museum (both museum endowment and outside trusts) now total more than \$29 million. Taking a giant step toward a long-term goal, the museum increased its endowment funds by \$4.6 million. Pledges due in future years bring the total to \$32 million.

guaranteeing financial health

SAM Foundation

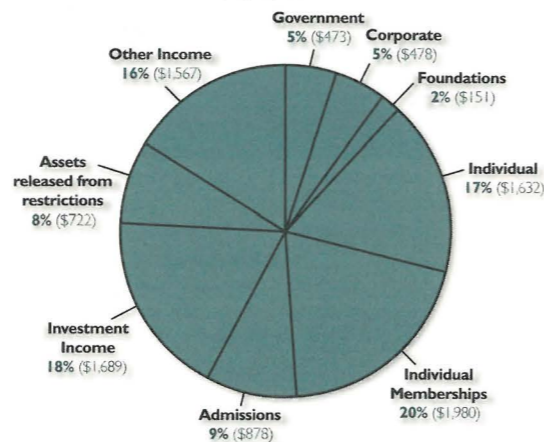
**Consolidated Statement of Activities
Operating Activity—Year Ending 6/30/96**

SUPPORT	FY 96
Government	\$473,000
Corporate	478,000
Foundations	151,000
Individual	1,632,000
Individual Memberships	1,980,000
Admissions	878,000
Investment Income	1,689,000
Assets Released from Restrictions	722,000
Other Income	1,567,000
Total Support	\$9,570,000

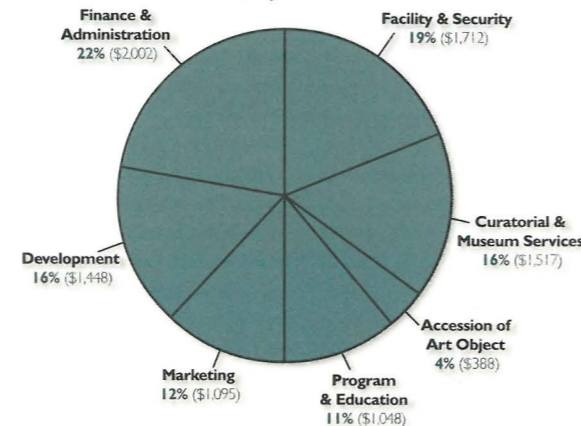
EXPENSE

Facility & Security	\$1,712,000
Curatorial & Museum Services	1,517,000
Accession of Art Objects	388,000
Programs & Education	1,048,000
Marketing	1,095,000
Development	1,448,000
Finance & Administration	2,002,000
Total Expense	\$9,210,000
Excess/Deficiency of Operating Support	\$360,000

**FY96 Operating Support (000's)
\$9,570**



**FY96 Operating Expense (000's)
\$9,210**



STAFF AS OF JUNE 30, 1996

DIRECTOR'S DIVISION

Mimi Gardner Gates
Miley Ball Nordstrom Director
Jackie Leone-Pleasant
Assistant to the Director

PLANNING

Dianne Loeb
Assistant Director, Planning

EDUCATION DIVISION

Jill Rullkoetter
Head of Education
Louisa Schriener
Education Administrative Assistant

ART COUNCILS

Susan Garcia
Council Coordinator
Kelley Grady
Assistant Council Coordinator

EDUCATION

Sarah Loudon
Senior Museum Educator
Yoshi Miki
Museum Educator
Beverly Harding
Museum Educator
Ann Kurtz
Museum Educator (Docents)
Anne Murphy
Museum School Instructor
Greg Olson
Film Coordinator
Janice Wakefield
Tour Coordinator
Fred Wong
Artist-in-Residence

LIBRARY

Elizabeth defato
Librarian
Jan Hwang
Assistant to Librarian
Jennifer Bender
Library Assistant

AUDIO-VISUAL SERVICES

John Kielyka
Interim Audio-Visual Specialist

VOLUNTEERS

Barbara Miles
Volunteer Coordinator

RENTAL/SALES GALLERY

Barbara Shaiman
Director, Rental/Sales Gallery
Kristina O'Neal
Rental/Sales Administrative Assistant

CURATORIAL DIVISION

Chiyo Ishikawa
Acting Associate Director of Art and Exhibitions, Curator of European Painting
Beth Altman
Temporary Administrative Assistant
Karin Cotter
Interim Exhibitions Coordinator
Zora Hutlova-Foy
Part-time Exhibitions Coordinator

ART OF AFRICA, OCEANIA & THE AMERICAS

Pam McClusky
Curator, Africa and Oceania
Steven Brown
Associate Curator, Native American Art

ASIAN ART

Bill Rathbun
John A. McCone Foundation Curator of Asian Art
John Stevenson
Acting Associate Curator, Chinese Art
Sheba Burney-Jones
Administrative Assistant

DECORATIVE ARTS

Julie Emerson
Ruth J. Nutt Curator of Decorative Arts

MODERN ART

Vicki Halper
Associate Curator, Modern Art
Peter Nesbitt
Curatorial Associate for Modern Art

EXTERNAL AFFAIRS DIVISION

Maryann Jordan
Deputy Director for External Affairs
Christa Hinshaw
Temporary Administrative Assistant

DEVELOPMENT

Jan Labyak
Associate Director for Development
Sheehan Sullivan
Development Assistant
Ben Beadles
Special Events Manager

CORPORATE/FOUNDATION

Jill Robinson
Corporate/Foundation Officer
Carol Mabbott
Grants Manager
Laura Hopkins
Grants Manager

MAJOR GIFTS

Margaret Weigter
Major Gifts/Planned Giving Manager
Craig Evans
Administrative Assistant

MEMBERSHIP

Cristina Ballet
Individual Giving Officer
Sonja Shaffer
Individual Giving Coordinator
Ashley Clark
Membership Manager

BOB POTTS

Membership Assistant
Linda G. Hatton
Word Processor, Membership
Zanetka Kral
Lead Membership Salesperson
Jennifer Trompeter
Membership Salesperson

FACILITIES MARKETING

John Ferguson
Facilities Marketing Manager
Heidi Walters
Facilities Marketing Assistant

MARKETING AND PUBLICATIONS

Lynn Tchobanoglous
Head of Marketing & Publications
Mary Ribesky
Publications Coordinator
Anne Treadwell
Graphic Designer
Sharon Birzer
Design & Production Assistant

ADMISSIONS

Ben Scholtz
Admissions Manager
Chris Lorraine
Admissions Floor Supervisor
Suzanne Motheral
Lead Admissions Representative

NAKENGE ADISA

Admissions Representative
Diana Dauble
Admissions Representative
Jay Kuehner
Admissions Representative
Julie Leyson
Admissions Representative
Vanessa Sharp
Admissions Representative

MARY SHEA

Admissions Representative
Nicole Sicilia
Admissions Representative
Bang Jing Sun
Admissions Representative
Alan Wright
Admissions Representative

MUSEUM STORE

Joan Halpin
Store Sales Manager
Kelly Myers
Assistant Sales Manager

CANDICE REDFOX

Senior Sales Associate
James Beaulieu
Sales Associate
Jill Capozzoli
Sales Associate
Karen Contreras
Sales Associate

LISA CRAMER

Sales Associate
Shawna Davis
Sales Associate
Keith Kerner
Sales Associate
Craig Orback
Sales Associate

NICK PETROSINO

Sales Associate
Bang Jing Sun
Sales Associate
Sara Whisnant
Sales Associate
Dorothy Youngberg
Sales Associate

CHRIS LOE

Stockroom/VP Store Supervisor

JUNE RICHEY

Data Entry Clerk

PUBLIC AFFAIRS

Jacci Thompson-Dodd
Public Affairs Officer
Linda Williams
Public Affairs Assistant

FINANCE DIVISION

Jeff Eby
Chief Financial Officer

ACCOUNTING

Barbara Clunn
Accounting Manager
Susan Sifferman
Bookkeeper A
Karl Sifferman
Bookkeeper B

DENNIS MILICH

Accounts Payable Clerk
Saydie Wilson
Accounting Clerk

ADMINISTRATIVE DEPARTMENT

Steve Dwyer
Office Manager
Shawna Lee
Receptionist
David Martin
Mail Courier
Walter Wright
Loading Dock Clerk

VEVA BARKOWSKI

Senior Operations Assistant
Charlotte Brame
Operations Assistant

HUMAN RESOURCES

Sarah Dobbin
H.R. Central Corporation

SYSTEMS

Kippy Messett
Systems Manager
Carol Mack
Analyst
Stephanie Malone
Data Entry Clerk

MUSEUM SERVICES DIVISION

Gail Joice
Senior Deputy Director for Museum Services, Registrar
Riva Davis
Assistant to the Registrar
Paul Macapia
Museum Photographer
Kate Smith
Photo Archivist/Rights and Reproduction Coordinator

The Seattle Art Museum employed 155 full-time-equivalent staff members as of 6/30/96.

REGISTRATION AND ART HANDLING

Phil Stoiber
Associate Registrar
Lauren Tucker
Associate Registrar
Torie Stratton
Assistant Registrar
Julie Creahan
Conservation Technician/Collections Care Manager

CORINE LANDRIEU

Collections Assistant
Vicki Parry
Collections Assistant
Marta Pinto-Llorca
Collections Assistant
Dennis Meyer
Coordinator, Art Handling
Paul Martinez
Art Handler
Barbara Robertson
Assistant to Conservation Technician

EXHIBITION PREPARATORS

Mike McCafferty
Exhibition Designer
Chris Manojlovic
Associate Exhibition Designer
B.J. Farrar
Preparator
Gordon Lambert
Preparator
Jack Mackey
Preparator
Sean Miller
Gallery Technician

MAINTENANCE

Volunteer Park
Jim Haarsager
Maintenance Supervisor
Allen Daniel
Custodial Engineer
Tore Hoven
Custodial Engineer
Alvin Gosser
Custodian

DOWNTOWN

Jeff Tosh
Maintenance Superintendent
Matthew Lennon
Maintenance Engineer
Sandra Doughty
Custodian Supervisor
David Norman Stuart
Lead Custodian
Alan Anderson
Custodian
Temur Khakberdiev
Custodian

ADMINISTRATIVE DEPARTMENT

Steve Dwyer
Office Manager
Shawna Lee
Receptionist
David Martin
Mail Courier
Walter Wright
Loading Dock Clerk
Veva Barkowski
Senior Operations Assistant
Charlotte Brame
Operations Assistant

HUMAN RESOURCES

Sarah Dobbin
H.R. Central Corporation

SYSTEMS

Kippy Messett
Systems Manager
Carol Mack
Analyst
Stephanie Malone
Data Entry Clerk

MUSEUM SERVICES DIVISION

Gail Joice
Senior Deputy Director for Museum Services, Registrar
Riva Davis
Assistant to the Registrar
Paul Macapia
Museum Photographer
Kate Smith
Photo Archivist/Rights and Reproduction Coordinator

SECURITY

John Wickstrom
Chief of Security
Jack Hyder
Assistant Chief of Security

VOLUNTEER PARK

Carlos Contreras
Security Supervisor
Roland Grober
Security Supervisor
Lee Singer
Security Dispatcher
James Parsons
Relief Dispatcher

DOWNTOWN

Willie Herring
Security Supervisor
Leon Reed
Security Supervisor
Ernest Tate
Security Supervisor
Steve Weinberg
Security Supervisor

NICHOLAS BROWN

Security Dispatcher
Gordon Bunting
Security Dispatcher
Jennifer Wallner
Security Dispatcher

VISITOR SERVICES OFFICERS

Donald Ankeny
Arturo Artorez
Donald Bartel
James Beaman
Jennifer Bender
Gail Berndt-McDougle
Rebecca Bush
Kimberly Corke
James Culhane
Sarah Davis
Alfonso deAnda
Dominick DeDominico

KURT DINGLER

James Dossen
Jayme Duarte
Matthew Finn
Lisa Fong
Cyrus Ghiasvand
Daniel Gorgas
Tracy Grant
Maxine Hoddinott
Steve Hollifield
Donald Hutton
Tracey Jain
William Keiley
Isamu Kimura
Paul Klein
Matt Looney
James Matthew
Harold McDaniel
Michael McIntosh
Michael Miller
Jeanene Miller
Benjamin Muehnick
Allan Orr
David Rainey
David Scalzo
Roy Stanton
Juan Sunga
Tasha Tasso
Mark Teicher
Brian Wallace
Alex Williams
Noel Zank
Mary Zeran

SHERATON RESTAURANT AT SAM

Steve Johansson
Restaurant/Catering Manager
Steve Iverson
SAM Chef

VOLUNTEER PARK

Carlos Contreras
Security Supervisor
Roland Grober
Security Supervisor
Lee Singer
Security Dispatcher
James Parsons
Relief Dispatcher

SECURITY

John Wickstrom
Chief of Security
Jack Hyder
Assistant Chief of Security

VOLUNTEER PARK

Carlos Contreras
Security Supervisor
Roland Grober
Security Supervisor
Lee Singer
Security Dispatcher
James Parsons
Relief Dispatcher

SECURITY

John Wickstrom
Chief of Security
Jack Hyder
Assistant Chief of Security

VOLUNTEER PARK

Carlos Contreras
Security Supervisor
Roland Grober
Security Supervisor
Lee Singer
Security Dispatcher
James Parsons
Relief Dispatcher

SECURITY

John Wickstrom
Chief of Security
Jack Hyder
Assistant Chief of Security

VOLUNTEER PARK

Carlos Contreras
Security Supervisor
Roland Grober
Security Supervisor
Lee Singer
Security Dispatcher
James Parsons
Relief Dispatcher

SECURITY

John Wickstrom
Chief of Security
Jack Hyder
Assistant Chief of Security

Seattle Art Museum
100 University Street
Seattle, Washington
98101-2902
(206) 625-8900

© 1996 Seattle Art Museum Graphic Design: Anne Treadwell Photography: Paul Macapia, unless otherwise noted Printing/Embossing: Artcraft Printing Co., Inc. Digital Scans: Graphic Chromatics, Inc.

Board of Trustees

July 1995–October 1996

OFFICERS

Mr. Dean D. Thornton, Chairman
 Mr. John Moga, President
 Mrs. Betty Hedreen, Vice-President
 Mrs. Belle Maxwell, Vice-President
 Mr. P. Cameron DeVore, Secretary
 Mr. James C. Hawkanson, Treasurer

TRUSTEES

Mr. Michael Alhadeff
 Mrs. James E. Allison
 Eve Alvord
 Mr. Robert M. Arnold
 Patrice Auld
 Rosa Ayer
 Mr. Tom Barwick
 Mr. Frank S. Bayley
 Mr. Jeffrey Brotman
 Mrs. Susan Brotman
 Mr. Steven Clifford
 Dr. Oliver E. Cobb
 Mr. Richard P. Cooley
 Mrs. Jane Lang Davis
 Mrs. Brewster Denny
 Mr. Robert B. Dootson
 Mrs. Barbara Duzan
 Mrs. Paul S. Friedlander
 Miss Meg Greenfield
 Dr. Michael E. Greer
 Mrs. Thomas Griffin
 Carolyn Grinstein
 Mrs. Max Gurvich
 Mr. Marshall Hatch
 Mrs. Ann Hauberg
 Mr. Michael Henry Healy
 Mr. Dan F. Henderson
 Mr. John Hough
 Dr. Mary Ann James
 Mr. Charles J. Katz, Jr.
 Mary Ketcham Kerr
 Ms. Janet Ketcham
 Mr. C. Calvert Knudsen
 Mr. David Maryatt
 Mrs. Sally Maryatt
 Mr. Byron Meyer
 Dr. Gail N. Morgan
 Mr. William H. Neukom
 Mrs. John N. Nordstrom
 Mr. Robert C. Nowinski
 Mrs. Roy Nutt

Mr. James Olson
 Mr. Theodore R. Pappas
 Mrs. Jean Radford
 Mr. Brooks G. Ragen
 Constance Rice
 Mr. John V. Rindlaub
 Mrs. John S. Robinson
 Mr. Sam Rubinstein
 Mrs. Faye Sarkowsky
 Mr. Herman Sarkowsky
 Mr. Stanley D. Savage
 Mrs. Douglas R. Scheumann
 Mr. Thomas E. Schick
 Ms. Roberta Sherman
 Mrs. Frank Shrontz
 Dr. Charles Simonyi
 Mrs. Kayla Skinner
 Mr. Vinton "Slim" Sommerville
 Mr. Malcolm T. Stamper
 Mr. C. Jairus Stratton III
 Mrs. William K. Street
 Mrs. Samuel N. Stroum
 Mr. David K. Y. Tang
 Mrs. Margaret L. Perthou Taylor
 Mrs. Kathleen Titcomb
 Mr. Gerard Tsutakawa
 Mr. David Utterberg
 Susan H. Vititoe
 Mr. Griffith Way
 Mr. Richard L. Weisman
 Mr. Charles Wright
 Mrs. Howard S. Wright
 Mrs. Virginia Wright
 Mrs. Evans Wyckoff

EX-OFFICIO

The Honorable Norman B. Rice
Mayor, City of Seattle
 Ms. Jan Drago
President, Seattle City Council
 Mr. Dwight Dively
Seattle City Treasurer
 Mr. William Arntz
Chair, Board of Park Commissioners
 Mr. Don Nielson
Seattle School Board Representative
 Denice Hunt
Mayor's Office, City of Seattle
 JoAnn Cowan
Seattle City Treasurer's Office
 Mrs. Ann Barwick
President, Council of American Art
 Mr. Keith Brintzenhofe
Acting President, Contemporary Art Council

Ms. Sara Smith
President, Native Arts of the Americas and Oceania Council
 Mr. Robert Dootson
President, Asian Art Council
 Ms. Trish Eden
President, Pacific Northwest Arts Council
 Mr. Mambo Emedi
President, African, African American and Caribbean Arts Council
 Mrs. Lilly Halliday
Chair, Volunteers Association Executive Committee
 Mr. David D. Johnson
President, Photography Council
 Mrs. Neva Wiseman
President, Decorative Arts and Paintings Council

HONORARY ACTIVE

Mrs. Ellsworth C. Alvord
 Mr. Kenneth R. Fisher
 Mrs. Anne Gerber
 Mr. John H. Hauberg
 Mrs. Henry C. Isaacson, Sr.
 Mr. Albert S. Kerry, Jr.
 Mr. Jacob Lawrence
 Mrs. Coe V. Malone
 Mr. Langdon Simons
 Mr. Willard J. Wright

HONORARY INACTIVE

Mr. Philip E. Renshaw
 Mr. George Tsutakawa
 Mr. Bagley Wright

LEAVE OF ABSENCE

Mr. William True

(Front vellum) Mark di Suvero (American, b. 1933), *Schubert Sonata*, 1992, steel sculpture, Gift of Jon and Mary Shirley, The Virginia Wright Fund, and Bagley Wright, 95.81

(Back vellum) Supported by the Anne Gerber Fund, Lynn Hershman's interactive *Paranoid Mirror* explored contemporary social and gender issues. SAM Trustee Anne Gerber is shown here in Hershman's electronic mirror



BOARD OF TRUSTEES

Board of Trustees

July 1995–October 1996

OFFICERS

Mr. Dean D. Thornton, Chairman
Mr. John Moga, President
Mrs. Betty Hedreen, Vice-President
Mrs. Belle Maxwell, Vice-President
Mr. P. Cameron DeVore, Secretary
Mr. James C. Hawkanson, Treasurer

TRUSTEES

Mr. Michael Alhadeff
Mrs. James E. Allison
Eve Alvord
Mr. Robert M. Arnold
Patrice Auld
Rosa Ayer
Mr. Tom Barwick
Mr. Frank S. Bayley
Mr. Jeffrey Brotman
Mrs. Susan Brotman
Mr. Steven Clifford
Dr. Oliver E. Cobb
Mr. Richard P. Cooley
Mrs. Jane Lang Davis
Mrs. Brewster Denny
Mr. Robert B. Dootson
Mrs. Barbara Duzan
Mrs. Paul S. Friedlander
Miss Meg Greenfield
Dr. Michael E. Greer
Mrs. Thomas Griffin
Carolyn Grinstead
Mrs. Max Gurvich
Mr. Marshall Hatch
Mrs. Ann Hauberg
Mr. Michael Henry Healy
Mr. Dan F. Henderson
Mr. John Hough
Dr. Mary Ann James
Mr. Charles J. Katz, Jr.
Mary Ketcham Kerr
Ms. Janet Ketcham
Mr. C. Calvert Knudsen
Mr. David Maryatt
Mrs. Sally Maryatt
Mr. Byron Meyer
Dr. Gail N. Morgan
Mr. William H. Neukom
Mrs. John N. Nordstrom
Mr. Robert C. Nowinski
Mrs. Roy Nutt

Mr. James Olson
Mr. Theodore R. Pappas
Mrs. Jean Radford
Mr. Brooks G. Ragen
Constance Rice
Mr. John V. Rindlaub
Mrs. John S. Robinson
Mr. Sam Rubinstein
Mrs. Faye Sarkowsky
Mr. Herman Sarkowsky
Mr. Stanley D. Savage
Mrs. Douglas R. Scheumann
Mr. Thomas E. Schick
Mrs. Roberta Sherman
Mrs. Frank Shrontz
Dr. Charles Simonyi
Mrs. Kayla Skinner
Mr. Vinton "Slim" Sommerville
Mr. Malcolm T. Stamper
Mr. C. Jairus Stratton III
Mrs. William K. Street
Mrs. Samuel N. Stroum
Mr. David K.Y. Tang
Mrs. Margaret L. Perthou Taylor
Mrs. Kathleen Titcomb
Mr. Gerard Tsutakawa
Mr. David Utterberg
Susan H. Vititoe
Mr. Griffith Way
Mr. Richard L. Weisman
Mr. Charles Wright
Mrs. Howard S. Wright
Mrs. Virginia Wright
Mrs. Evans Wyckoff

EX OFFICIO

The Honorable Norman B. Rice
Mayor, City of Seattle
Ms. Jan Drago
President, Seattle City Council
Mr. Dwight Dively
Seattle City Treasurer
Mr. William Arntz
Chair, Board of Park Commissioners
Mr. Don Nielson
Seattle School Board Representative
Denice Hunt
Mayor's Office, City of Seattle
JoAnn Cowan
Seattle City Treasurer's Office
Mrs. Ann Barwick
President, Council of American Art
Mr. Keith Brintzenhofe
Acting President, Contemporary Art Council

Ms. Sara Smith
President, Native Arts of the Americas and Oceania Council
Mr. Robert Dootson
President, Asian Art Council
Ms. Trish Eden
President, Pacific Northwest Arts Council
Mr. Mambo Emedi
President, African, African American and Caribbean Arts Council
Mrs. Lilly Halliday
Chair, Volunteers Association Executive Committee
Mr. David D. Johnson
President, Photography Council
Mrs. Neva Wiseman
President, Decorative Arts and Paintings Council

HONORARY ACTIVE

Mrs. Ellsworth C. Alvord
Mr. Kenneth R. Fisher
Mrs. Anne Gerber
Mr. John H. Hauberg
Mrs. Henry C. Isaacson, Sr.
Mr. Albert S. Kerry, Jr.
Mr. Jacob Lawrence
Mrs. Coe V. Malone
Mr. Langdon Simons
Mr. Willard J. Wright

HONORARY INACTIVE

Mr. Philip E. Renshaw
Mr. George Tsutakawa
Mr. Bagley Wright

LEAVE OF ABSENCE

Mr. William True

(Front vellum) Mark di Suvero (American, b. 1933), *Schubert Sonata*, 1992, steel sculpture, Gift of Jon and Mary Shirley, The Virginia Wright Fund, and Bagley Wright, 95.81

(Back vellum) Supported by the Anne Gerber Fund, Lynn Hershman's interactive *Paranoid Mirror* explored contemporary social and gender issues. SAM Trustee Anne Gerber is shown here in Hershman's electronic mirror