

PACIFIC NORTHWEST  
**LIVING**



## Art Museum Tour Home

# 'Museum' Of Exquisite, Rare Pieces

By MARGERY R. PHILLIPS

**I**N 1906, a handsome town house was built on Capitol Hill for Robert A. Tripple. Fifty years later the Woolvin Pattens, who purchased the home in 1949 from the late Horton Force, refurbished the house with the assistance of a San Francisco designer, Barton Davis, and McBreen Interiors of Seattle.

The distinctive home is included in the Seattle Art Museum's 15th Annual Exhibition of Residential Architecture, called "Capitol Hill Classics." It will be held May 7.

The Woolvin Patten home is a "museum" of exquisite and rare pieces of furniture, art objects and accessories. Many of the pieces came from the Georgia home of Mrs. Patten's mother, who was a collector and decorator.

In the gracious drawing room are four chairs of the Louis XVI. period that have their original Beauvais tapestry. A quaint melodeon, a Japanese hibachi used as an end table, Italian sculptures, wood candelabra and gilded chairs also are to be admired.

In the formal dining room, elegant silver, rare porcelain and stoneware and fine traditional furniture bring the beauty of past generations into 20th Century living.

Photos by Elizabeth Green

Stairs carpeted in burnt orange lead from the black-and-white vinyl floor of the entrance hall at the Woolvin Patten home on Capitol Hill. The Regency cabinet in the foreground has a grille front and marble top. An old custom is revived—a collection of candlesticks on the bottom step to be used to light the way upstairs in the evening.

CONTINUED



Miss Pat Repetowski  
U. of Washington



Mrs. Kris Woolery  
U. of Arizona

## They Prefer Contact Lenses

Pat and Kris are wearing contact lenses fitted and manufactured for them at Davis Optical Contact Lens Center, the Northwest's largest contact lens center.

Contact lenses are not expensive at any of the four Davis Optical Contact Lens Centers in the Seattle area. Through our modern manufacturing laboratories, fitting techniques and specialization in contact lens dispensing, we can offer contact lenses at one reasonable price. If you have wanted contact lenses but thought the cost too high . . . Call your nearest office. We have fitted thousands over the past eight years. . . . We will gladly quote exact prices to you over the telephone.

## Convenient Credit

## Specializing in Contact Lenses

**Davis**  
Optical

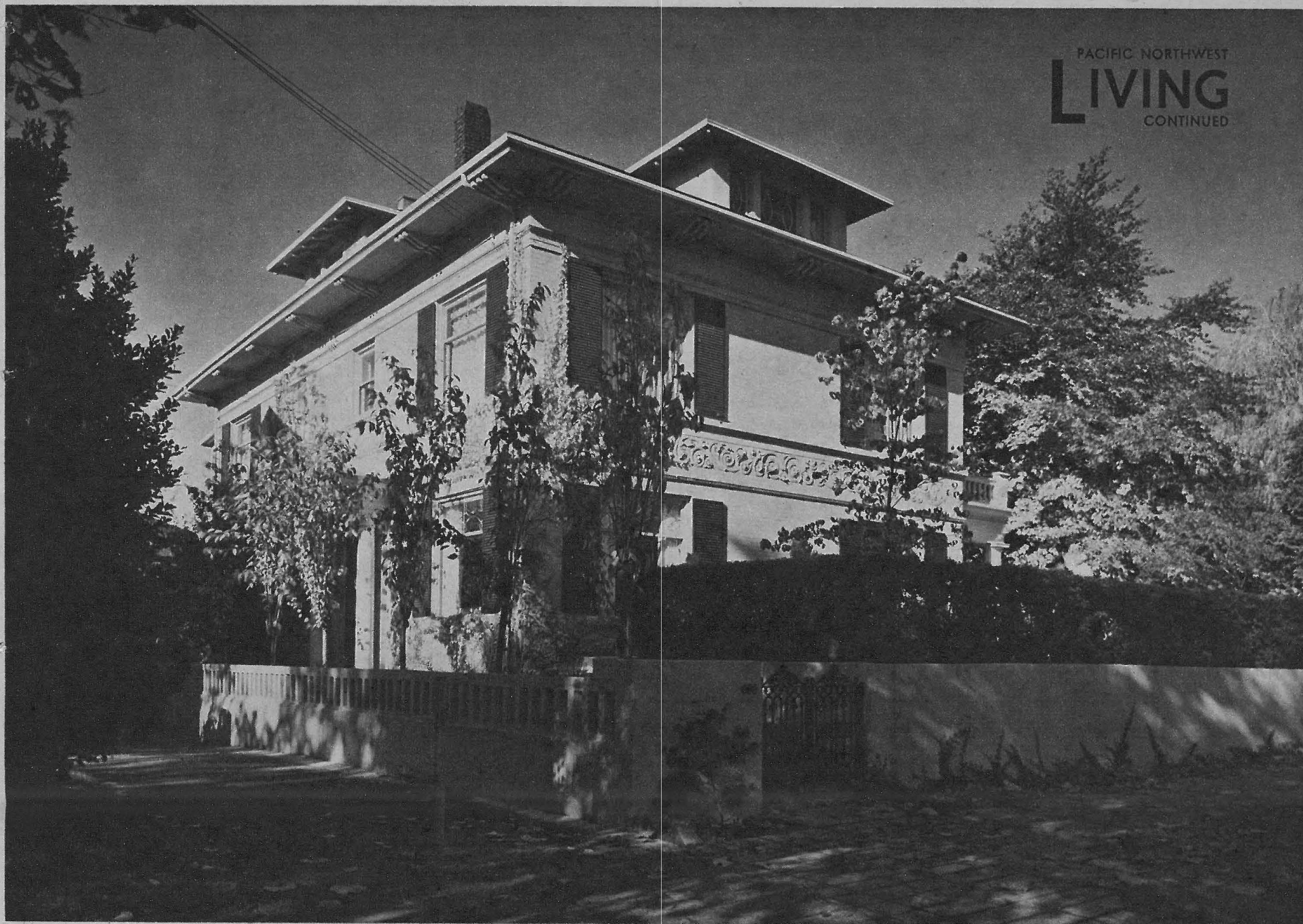
**CONTACT LENS CENTER**

**Downtown**  
901 Joshua Green Bldg.  
MA 4-5262

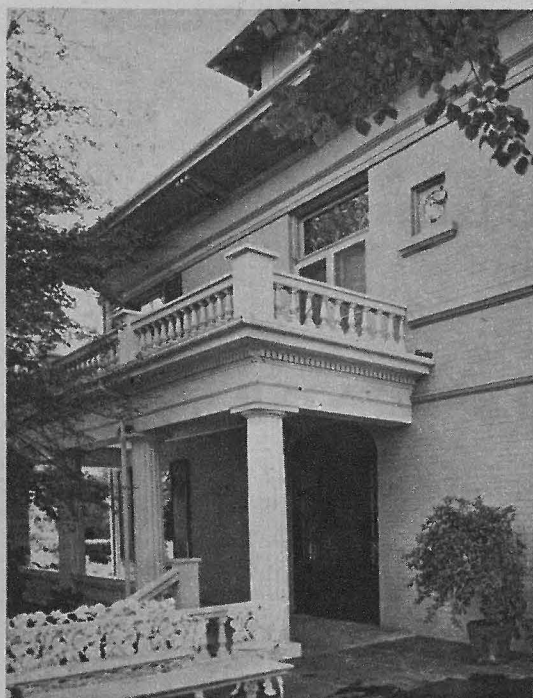
**University District**  
4323 University Way  
ME 3-5225

**West Seattle**  
4531 California Ave. S.W.  
WE 2-5260

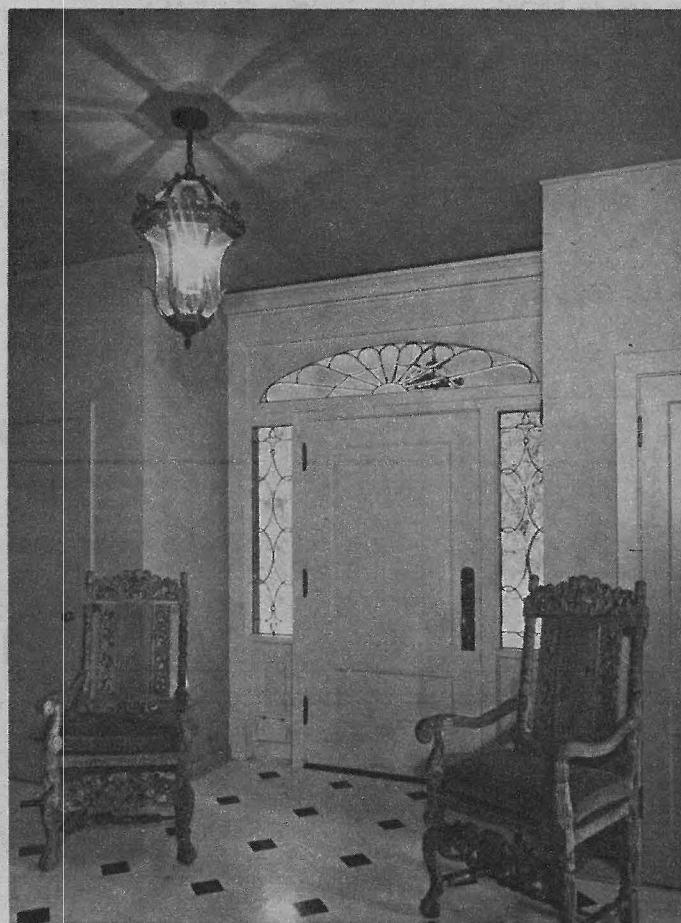
**Burien**  
153 S.W. 152nd  
CH 3-5260



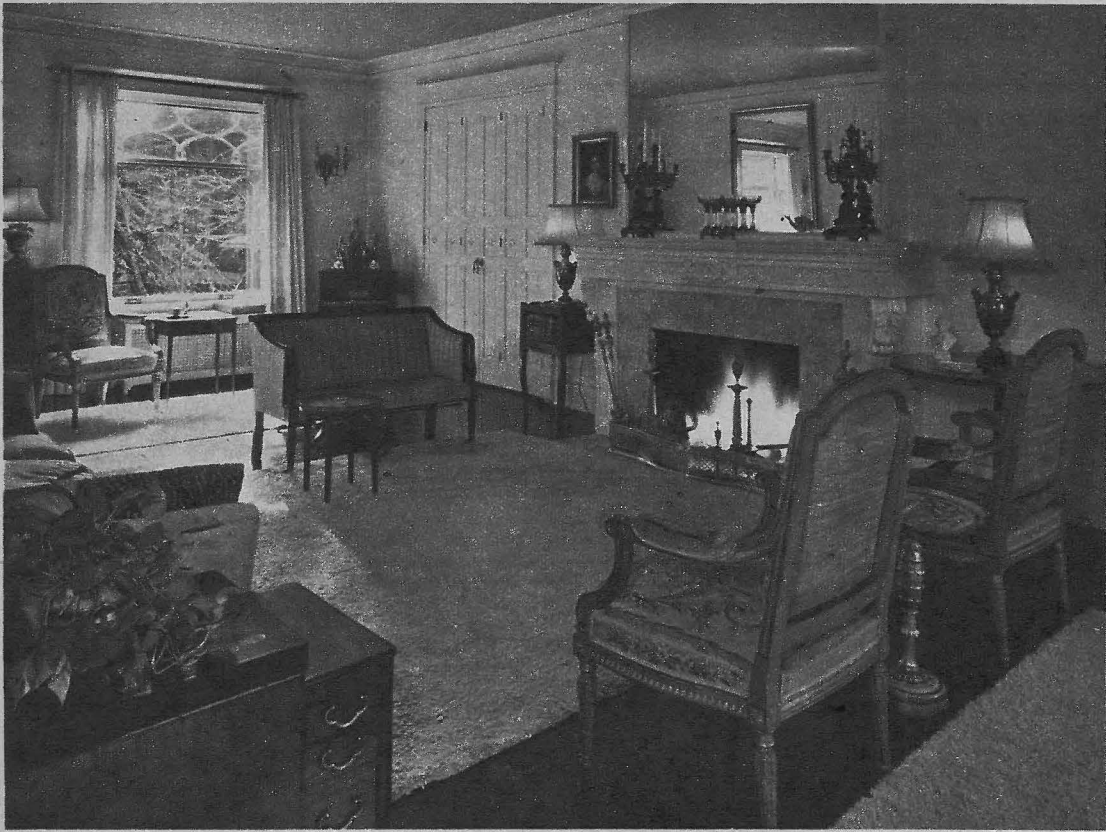
The Woolvin Patten home is included in the Seattle Art Museum's 15th Annual Exhibition of Residential Architecture.



Fine detailing on columns and balustrade at the main entrance add dignity to the home.



The entrance hall is classic with its black-and-white color scheme. Carved Italian chairs are in keeping with the formality of the home.



The drawing room is very formal, containing traditional designs, such as

the Louis XVI. chairs still upholstered in the original Beauvais tapestry.



One corner of the drawing room has a graceful Italian table and an Italian cabinet with tambour front. A collection of old miniatures is a decorative accent on the drop-leaf mahogany table.

CONTINUED



## The John Vogler Group

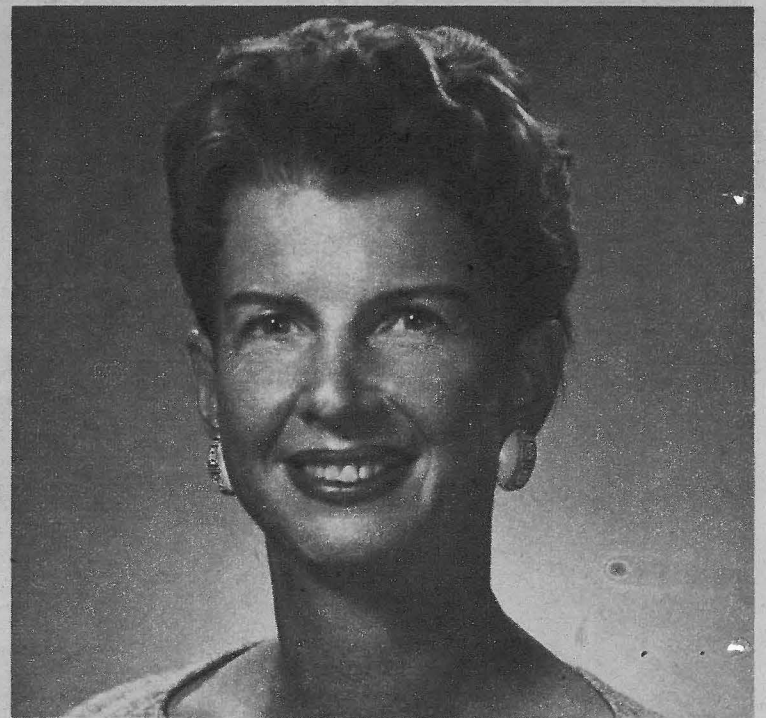
The solid cherry China Closet pictured is representative of the many fine pieces in this group that may be seen at Colonial House.

The elegant simplicity, the warm rich finish and the inner beauty that you do not see in the picture—the integrity of fine craftsmanship—all combine to make pieces of the John Vogler group ones you will want to collect and hand down to your children's children.



11306 Bothell Way N.E.  
Seattle EM. 4-4030

Wed. and Fri. to 9 P.M. Closed Mondays



STYLIZED HAIR CUTTING

by MRS. LONGMIRE ..... \$2.00

Special, Permanent **\$8.50**

**Gowan**  
BEAUTY SALON

4341  
UNIVERSITY  
WAY N.E.

PHONE  
ME. 2-6673

DAILY OR EVENING APPOINTMENT

THE SEATTLE TIMES Sunday, April 26, 1964

21



The drawing-room fireplace came from an old San Francisco home. In the foreground are an inlaid table and love seat in Sheraton style.



So soft...  
 you forget them.  
 So safe...  
 you can.

**Fems**  
 feminine napkins

The dining room abounds in heirloom pieces. The table and chairs are Chippendale; the bow-front sideboard

is Hepplewhite. Inlaid boxes are used on either side of the ornate mirror which hangs above the sideboard.



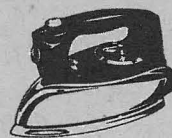
Atop a charming melodeon by DuBois & Stodart are old French porcelain figurines.

It's a 4-slice toaster . . .  
or it's a 2-slice! (each 2-slot section can be controlled separately)



Model D111

**TOASTMASTER *Hostess* 4-SLICE TOASTER** has king size capacity in little more than 2-slice toaster space. Toasts 1 to 4 slices. Each two toast slots work separately . . . like two toasters in one. And the controls are "up front" where they belong. Durable? They're made by Toastmaster and most everyone knows Toastmaster products last years longer than others. Next time you want to give an enduring gift, give a Toastmaster toaster. And give yourself one. You should have the best, too.



**Automatic Steam and Dry Iron**  
It holds even heat level. Gives fine steam particle penetration into fabrics. Model B411.

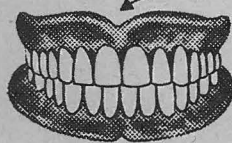


**Imperial Stainless Steel Coffee Maker**  
Coffee touches only flavor-protecting Stainless Steel. Easy to clean. Model M521.

**TOASTMASTER** MCGRAW-EDISON  
DIVISION MCGRAW-EDISON COMPANY

**NEW MIRACLE FALSE TEETH RELINER**

**denturite**



WORKS ON NATURAL SUCTION PRINCIPLE. NOT ADHESION

**ENDS YOUR FALSE TEETH MISERY**

Denturite, the amazing new false teeth reliner, flows on and sets in five minutes. Wear your plates and eat anything immediately. Stops clicking, eases sore gums. Prevents food from getting under plate. Laugh, talk, without embarrassment. DENTURITE stays firm yet pliant. Lasts 6 months or more! Peels out easily if replacement is needed. Plates fit securely without daily use of powders, pastes, or cushions. Easy to use; tasteless, odorless, harmless to plates and gums. Money-back guarantee. At your drug counter.

**THE FRANKLIN HEATER**

**FIREPLACE**

LIVING ROOM  
REC. ROOM  
BEACH HOME  
OR COTTAGE

AS LOW AS  
**\$6.50**  
PER MONTH

More Heat  
Low Cost  
Choice of Models



**NO DOWN PAYMENT**

**FIREPLACE DISTRIBUTORS**  
**SEATTLE TACOMA**  
4501 Rainier Av. — 5233 S. Tacoma Wy.  
**PA. 5-5522 GR. 4-0681**

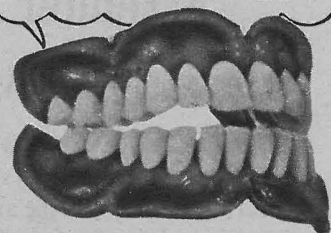
We would like more information please:  
Name .....  
Address .....  
Phone .....  
Complete Installation Service

**"O-O-O-O MY FEET"**  
THEY'RE KILLING ME!  
Why suffer agonies of **CORNS & CALLOUSES**  
TIRED, TENDER, ITCHING, BURNING, PERSPIRING, SMARTING FEET  
**QUICK RELIEF!**  
GET PROMPT RELIEF THE SURE WAY WITH RELIABLE JOHNSON'S FOOT SOAP

\*AT ALL DRUGGISTS AND FAMOUS TOILET GOODS DEPTS. SINCE 1870

**JOHNSON'S FOOT SOAP**  
BORAX IODIDE AND BRAN

**NOW! EAT BETTER, FASTER, MORE COMFORTABLY WITH FALSE TEETH BY RAISING BITING POWER!**



When false teeth get on your nerves many dentists give special FASTEETH powder. It helps hold teeth in place—helps keep them from slipping or dropping down when you talk—makes you feel more secure. FASTEETH cushions tender gums so you can bite harder and eat faster with greater comfort. FASTEETH helps you laugh and speak clearly without embarrassment. FASTEETH checks "plate odor" (denture breath). At drug counters everywhere.