



This view, from the music room of the Merrill home, shows the formal garden designed in the Williamsburg Millefleurs style.

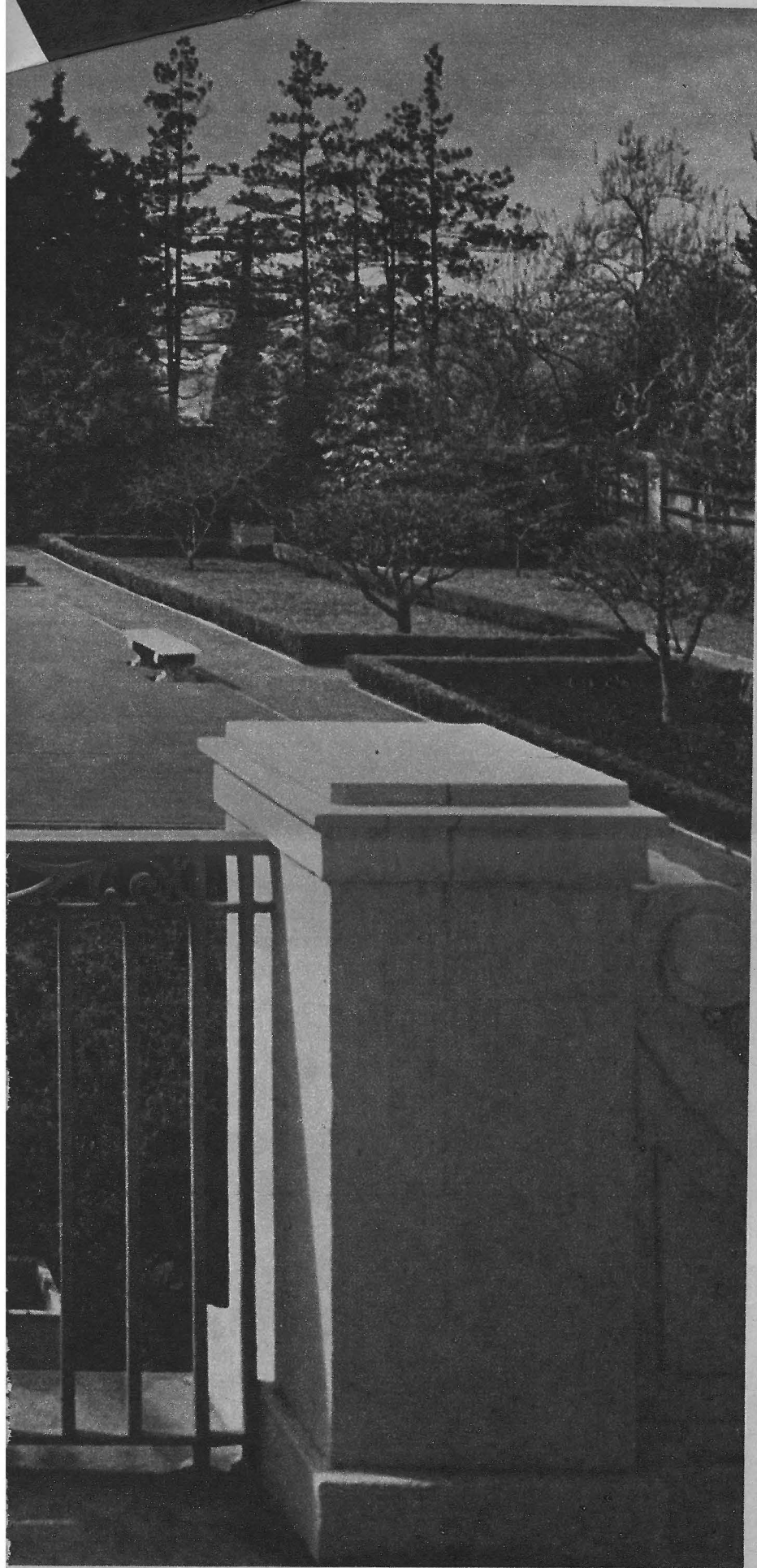
PACIFIC NORTHWEST
LIVING

*'Capitol Hill
Classic'*

By MARGERY R. PHILLIPS

AT the turn of the century, when Seattle was feeling its first thrust of prosperity, some residents decided to build very beautiful homes on Capitol Hill, one of which was the Richard Dwight Merrill house of classic design.

One of the few beautiful homes of that era that have gone unchanged in design and furnishings, it is among 11 homes which will be included in the Seattle Art Museum's 15th annual exhibition of residential architecture from 10 a.m. to 5 p.m. May 7. This year's tour is called "Capitol Hill Classics."

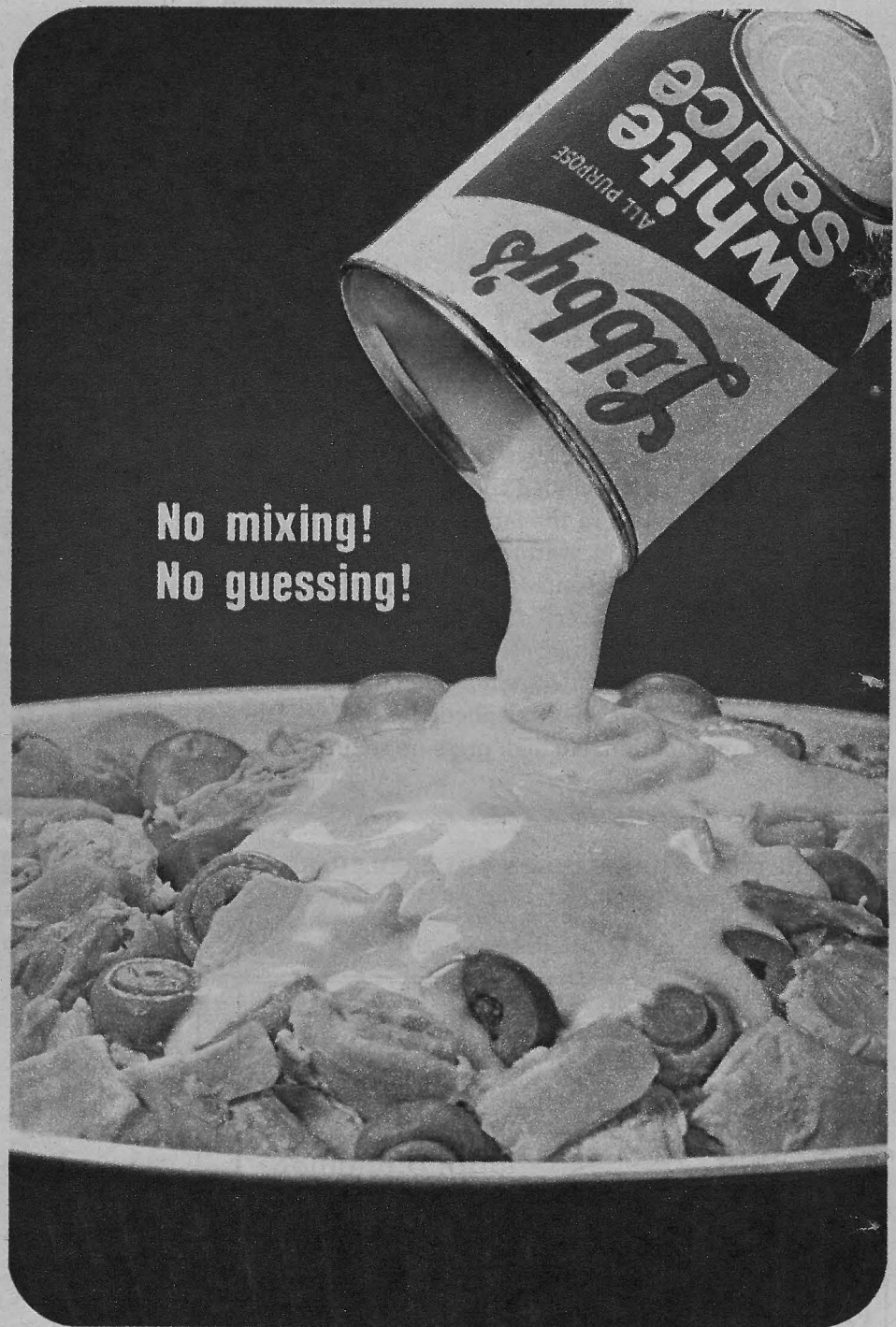


In 1909 Charles A. Platt, Sr., of New York designed the Merrill house and garden in elegant Italian style. He also selected the furnishings from France and Italy.

Throughout the house Venetian furniture, painted and gilded, is in keeping with damask walls, walnut paneling, silk antique-velvet upholstery, tapestries and highly polished parquet floors.

Also notable is a quaint tile tea table in the drawing room. The table was purchased by the Merrills after it had been chosen for its prize-winning design at the Chicago world's fair in 1893.

NEW!!!



**No mixing!
No guessing!**

Perfectly ready

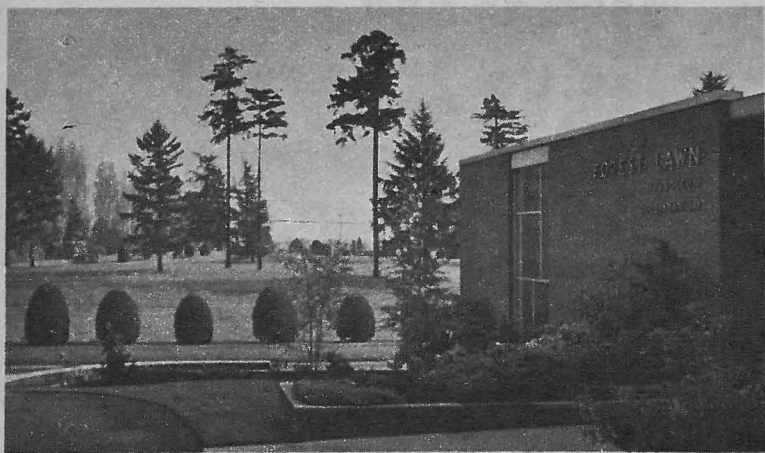
WHITE SAUCE

from Libby's



Corner-cutter for new-fashioned cooks! New Libby's White Sauce is *always* creamy-smooth, buttery, delicate . . . *completely, perfectly ready* for a fast sure start on dressed-up left-overs, countless everyday standbys and fancy day dishes. No fuss, no muss, no wasted time! Pour right from can into baking-serving dish (or into saucepan, if you want to heat top-stove).

Shortcake the very nicest way. Rich, old-fashion from Betty Crocker's own recipe. Tender, flaky, like. Homemade shortcake. Shortcut shortcake, ingredients are already measured and blended ck. Wouldn't you rather have real shortcake? It's homemade so easy with Bisquick!



Peaceful as a Rural Countryside

Although only a few minutes drive from the heart of the city, there is none of today's bustle and confusion at Forest Lawn. Instead you find the tranquility of a secluded country meadow. Here loved ones rest in the landscaped memorial park or in the light, warm mausoleum. Here are memorial arrangements within the financial means of virtually every family, with each selection receiving guaranteed care.

Pre-need arrangements are now available at reduced prices. Visit us or telephone for literature and information. No high pressure selling.

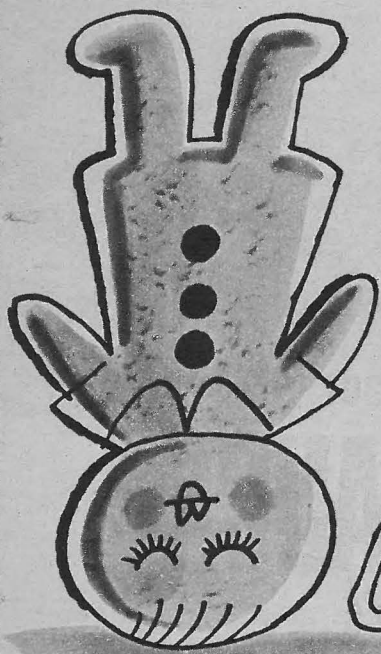
Forest Lawn

CEMETERY • URN GARDEN • MAUSOLEUM
6701 30th Avenue Southwest, Seattle 6, Washington
Telephone WEst 2-0050
Serving ALL Seattle since 1902



This view from the garden pavilion of the Merrill home shows the symmetrical

detailing and classic design of the handsome residence on Capitol Hill.



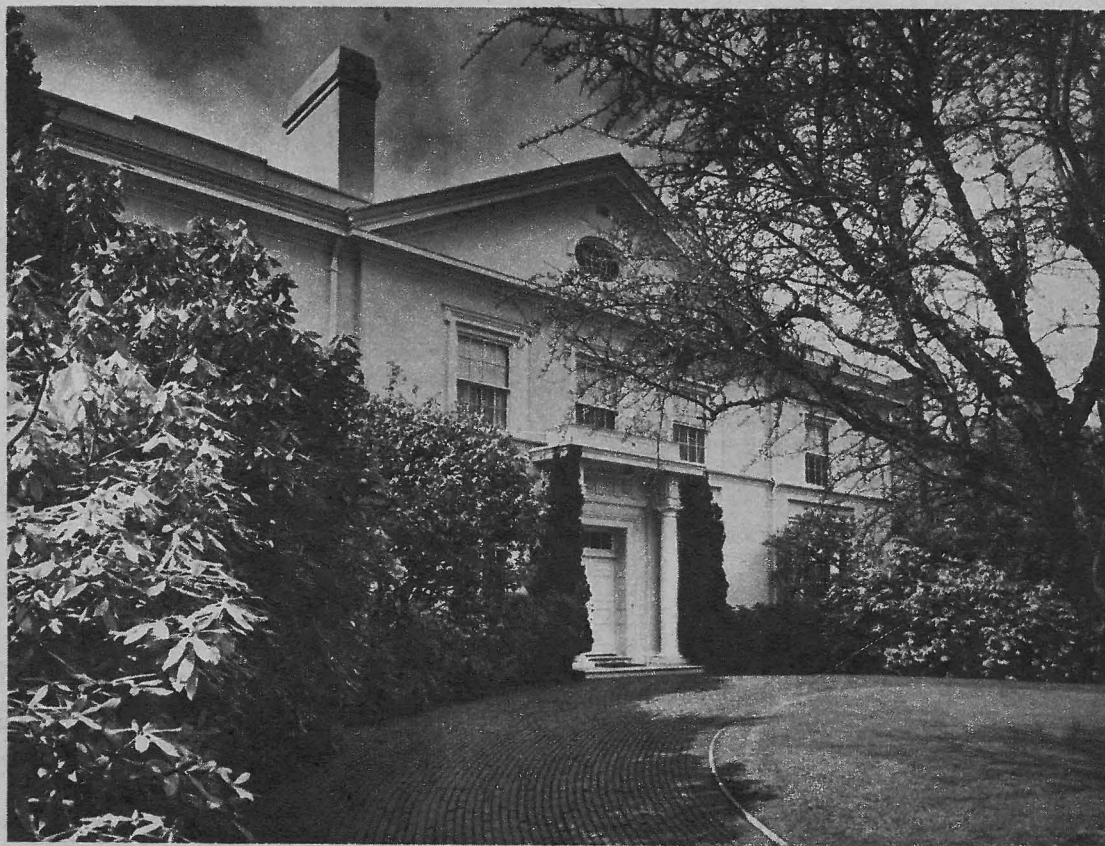
She was just plain Kook-ie until Grandma's Unsulphured Molasses made her a tasty cookie!

Grandma's Molasses puts old-fashioned mmm in chewy or crunchy molasses cookies, in fragrant gingerbread. Use Grandma's for all recipes that call for "molasses" in cookies or gingerbread. Grandma's is naturally light and sweet—leaves no bitter aftertaste.



Send for free 36-page book—~~preparing or smoking. Fat drips~~ away, reducing the cholesterol content. The meat

STAINLESS



The Italian-influenced classic design, as delineated in 1909 by Charles A. Platt,

Sr., a New York architect, has been unchanged since the home was built.



The entrance hall has a gracefully curving stairway, which is carpeted in deep red. The four-drawer chest at the left is 17th Century Jacobean in design. The painting hanging above it is by Salvador Rosa.



A handsome Italian cas-sone, with painted and inlaid decoration, is below an elaborately designed mirror and two ornate gilded candle-holders.

CONTINUED



Bisquick

Look what you can make with Bisquick.
Family favorites--quick to make--
homemade good and that's a promise.
Betty Crocker



PANCAKES

2 cups Bisquick 1 1/2 cups milk
1 egg
Beat smooth with rotary beater.
Grease griddle if necessary. Turn
when bubbles appear. Makes about
18. Use 2 cups milk for thinner
pancakes.



COFFEE CAKE

2 cups Bisquick 1/2 cup milk
2 tbsps. sugar 1 egg
Heat oven to 400°. Mix ingredients.
Beat vigorously half min. Spread
into greased 9" round pan. Sprin-
kle with mixture of 1/2 cup brown
sugar, 1/2 cup Bisquick, 1/4 cup cold
butter, 1/2 tsp. cinnamon blended
with fork until crumbly. Bake 20
to 25 min.
For richer batter add 2 tbsps.
more sugar, 2 tbsps. melted short-
ening or vegetable oil.



MUFFINS

Mix ingredients as
for Coffee Cake.
Fill greased med.
muffin pans 3/4
full. Bake 15 min.
Makes 12.



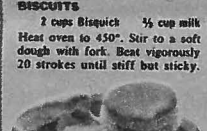
VELVET CRUMB CAKE

1 1/2 cups Bisquick 1 tsp. vanilla
1/2 cup sugar 1 egg
3 tbsps. shortening 1/4 cup milk*
Heat oven to 350°. Grease and
flour 8" square or 9" round pan.
Mix 1/4 cup of the milk with other
ingredients. Beat 1 min. med. speed
on mixer or vigorously by hand.
Stir in rest of milk; beat 1/2 min.
Pour in pan. Bake 35 to 40 min.
While warm, cover with topping.
Broiled Topping: Mix 3 tbsps.
soft butter, 1/2 cup brown sugar, 2
tbsps. cream, 1/2 cup coconut, 1/4
cup chopped nuts. Spread on baked
cake. Put about 3" under broiler
until brown, about 3 min.
*Over 3,500 ft. altitude, add 2 tbsps.
milk. Bake at 375° 25 to 30 min.



FRUIT SHORTCAKE

2 cups Bisquick 2 tbsps. sugar
1/2 cup cream* (if desired)
Heat oven to 450°. Mix ingredients
with fork to soft dough. Beat vig-
orously 20 strokes. Knead 8 to 10
times on lightly floured board. Roll
dough 1/4" thick. Cut with 3" flour-
ed cutter. Bake on ungreased bak-
ing sheet about 10 min. Split short-
cakes; spoon fruit between and
over layers. Makes 6 shortcakes.
*Or use 1/2 cup milk plus 1/4 cup
melted butter.



BISCUITS

2 cups Bisquick 1/2 cup milk
Heat oven to 450°. Stir to a soft
dough with fork. Beat vigorously
20 strokes until stiff but sticky.



For Drop Biscuits—spoon onto
greased baking sheet. Bake 10 to
15 min. Makes 12 med. size.
For Rolled Biscuits—roll dough on
cloth-covered floured board. Knead
8 to 10 times. Roll 1/4" thick. Cut
with floured cutter. Bake on un-
greased baking sheet 10 to 15 min.
Makes 12 2" biscuits. For richer
biscuits add 1/2 cup soft butter or
shortening to Bisquick before milk.



WAFFLES

2 cups Bisquick 1 1/2 cups milk
2 tbsps. melted 1 egg
shortening
Beat with rotary beater until
smooth. Makes three 9" waffles.



DUMPLINGS

2 cups Bisquick 1/2 cup milk
Mix well with fork. Spoon onto
boiling stew. Cook over low heat
10 min. uncovered and 10 min. cov-
ered. Makes 10 to 12 dumplings.

How about shortcake at your house!

(look on the back of your Bisquick box)

Bisquick makes shortcake the very nicest way. Rich, old-fash-
ioned shortcake from Betty Crocker's own recipe. Tender, flaky,
luscious shortcake. Homemade shortcake. Shortcut shortcake,
too. Six basic ingredients are already measured and blended
for you in Bisquick. Wouldn't you rather have real shortcake?
*Specially when it's homemade so easy with Bisquick!



SEE THE OMEGA WATCH EXHIBIT
AT THE SWISS PAVILION OF
THE NEW YORK WORLD'S FAIR



SEAMASTER MODELS \$95 TO \$460. DATE-TELLING MODELS FROM \$120.

Gravity-powered, self-winding Omega Seamaster®... tells both date and minute at a glance

Outmoding single-function watches, the Omega date-dial Seamaster combines the best features of 4 watches in one . . . winds itself . . . tells the date . . . sports watch sturdiness . . . dress watch elegance

The most constant source of power . . . *the force of gravity* . . . activates the ingenious mechanism of the Omega Seamaster. Unlike watches depending upon power cells that require periodic replacement, the automatic Seamaster will run for years as long as you wear it. The date-dial (at the 3 o'clock position) tells each day's date, changing automatically every midnight. Water and shock-resistant, the Omega Seamaster is preferred by watch experts as the most carefree of modern watches.

You will find Omega watches only in fine jewelry stores and better watch departments. Sold in 129 countries, every Omega carries a world-service guarantee. The complete Omega collection includes models for men and women, priced from \$65 to over \$10,000, Federal tax included.

Ω OMEGA

FOR A LIFETIME OF PROUD POSSESSION

Visit your nearest authorized Omega dealer. Ask for free Style Brochure

SEATTLE Friedlander & Sons, Ben Bridge Jewelers, Clarence Rock Jewelers, Fox's Gem Shop, Laykin et cie at I. Magnin & Co., Burnett Bros., Jewelers, Leo R. Chain Jewelers, Reibman Jewelers BELLEVUE Bevan Jewelry TACOMA Arthur N. Gunderson Jewelers, Friedlander & Sons, Burnett Bros. RENTON Porcello Jewelers

PACIFIC NORTHWEST LIVING CONTINUED



The drawing room has the original silk damask walls and walnut paneling. Above the fireplace is a tooled, painted Moroccan leather panel.



A John Henry Twachtman mural is painted on the wall behind the music room's piano. The cabinet is in Louis XV, style.

Munsingwear now adds Lycra®
 to men's briefs! Yes, ma'am, we take
 the easy care elastic you love for your own
 wear and put new comfort, longer life into
 men's brief waistbands. Get all of our exclusive
 Munsingwear comfort features plus Lycra,* guar-
 anteed for the life of the garment.

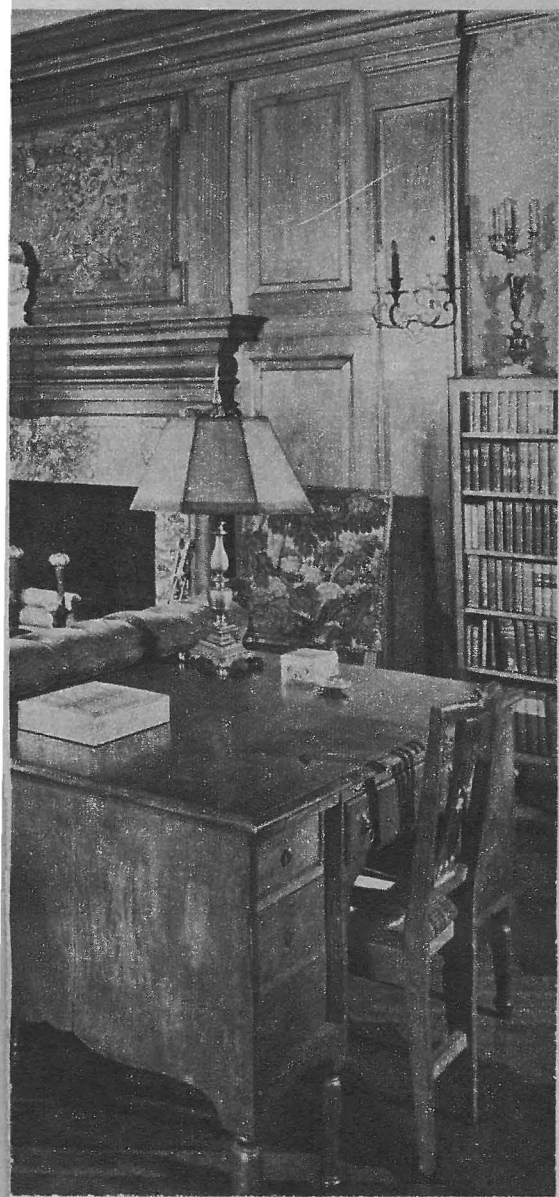
Costs you no more . . . just 1.25

*nearly every man and boy wears something by MUNSINGWEAR, INC.
 Minneapolis 5, Minnesota*



Munsingwear Brief 1215. Exclusive Male
 Pouch construction. Double stretchy seat.
 Combed cotton knit. At the stores only.

*Lycra is DuPont's registered trade
 name for its spandex elastic fiber.



Platt, the New York architect, chose all the furnishings. At left is a William and Mary chest. A Madonna stands atop an Italian Renaissance chest.

CONTINUED



An Italian credenza is used as a sideboard in the walnut-paneled dining room. The paneling is similar to that

found in the Governor's Palace in Williamsburg, Va. The high-backed chairs are covered in Venetian leather.



The panel painting over the fireplace in the music room is by Maxfield Parish. Armchairs are upholstered in antique velvet.

Denture Wearers

You'll hardly believe a denture cleanser can be so good



New way restores natural "whiteness" to teeth—pinkness to gums
KLEENITE with live oxygen outperforms other cleansers in two ways. It cleans denture surfaces *faster*. Enthusiastic users say that it removes *deeply embedded stains more completely*.
Faster cleaning power means removing in minutes food particles, dingy film and odor-causing bacteria—no all-night soaking—often no brushing at all.

Removing embedded stain means brighter pink in artificial gums—cleaner teeth look more like new—extra protection from denture breath. Dentists say KLEENITE with live oxygen is twice as effective as ordinary toothpaste—a striking advance over other leading denture cleansers. Get KLEENITE at all drug counters.

spray away "stuck"!



Amazing new way to stop stuck doors, windows, drawers and other petty annoyances. Just spray on Elmer's Slide-All, spray away "stuck." It's non-greasy, won't stain or leave oily film. Dries instantly to provide lasting lubrication and protection. And it's a lot more fun than tugging.

THE BORDEN CHEMICAL COMPANY

Are you using the most modern way to relieve hemorrhoids?

You can be sure—with The PAZO Formula in convenient suppository form . . . most modern way to shrink hemorrhoid tissue without surgery. Here's why . . .

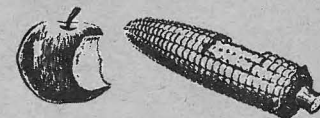
MODERN IN FORM. PAZO suppositories are ideal for today's active people. Handy to carry in pocket or purse, simple to use wherever you go. Foil-wrapped. Stainless, pure-white. No messy applicator, no messy stains.

MODERN IN FORMULA. Some products claim all-purpose ingredients which are expected to do many jobs. PAZO suppositories, however, are a scientifically developed combination of tested ingredients . . . each chosen for its ability to do one *primary* job with full-strength effectiveness.

Primary Function of Specific Ingredient	PAZO	Most Heavily Advertised Brand	Petroleum Jelly
Pile Tissue Shrinkage	✓	✓	
Lubrication	✓	✓	✓
Antiseptic Action	✓	✓	
Pain Relief	✓		
Itch Relief	✓		

Use the most modern way to soothe and shrink hemorrhoid tissue without surgery. PAZO suppositories. Also available in ointment form. **THE PAZO FORMULA** ANOTHER FINE PRODUCT OF GROVE LABORATORIES

EAT ANYTHING WITH FALSE TEETH!



Trouble with loose plates that slip, rock or cause sore gums? Try Brimms Plasti-Liner. One application makes plates fit snugly without powder, paste or cushions. Brimms Plasti-Liner adheres permanently to your plate; ends the bother of temporary applications. With plates held firmly by Plasti-Liner, **YOU CAN EAT ANYTHING!** Simply lay soft strip of Plasti-Liner on troublesome upper or lower. Bite and it molds perfectly. *Easy to use*, tasteless, odorless, harmless to you and your plates. Removable as directed. Money-back guarantee. At your drug counter. \$1.50 reliner for one plate; \$2.50, two plates. Plasti-Liner, Inc., Dept. P-114, 1075 Main St., Buffalo 9, N. Y.

BRIMMS PLASTI-LINER
THE PERMANENT DENTURE RELINER

BOOK NOTES

A page devoted to Pacific Northwest literary doings in

THE CHARMED LAND MAGAZINE

The Seattle Sunday Times