

MAGNOLIA ERECTS HUGE NEON SIGN

S
GHT

auto-
the im-
models.
Much
Deigh-
of their
ney are
the fu-

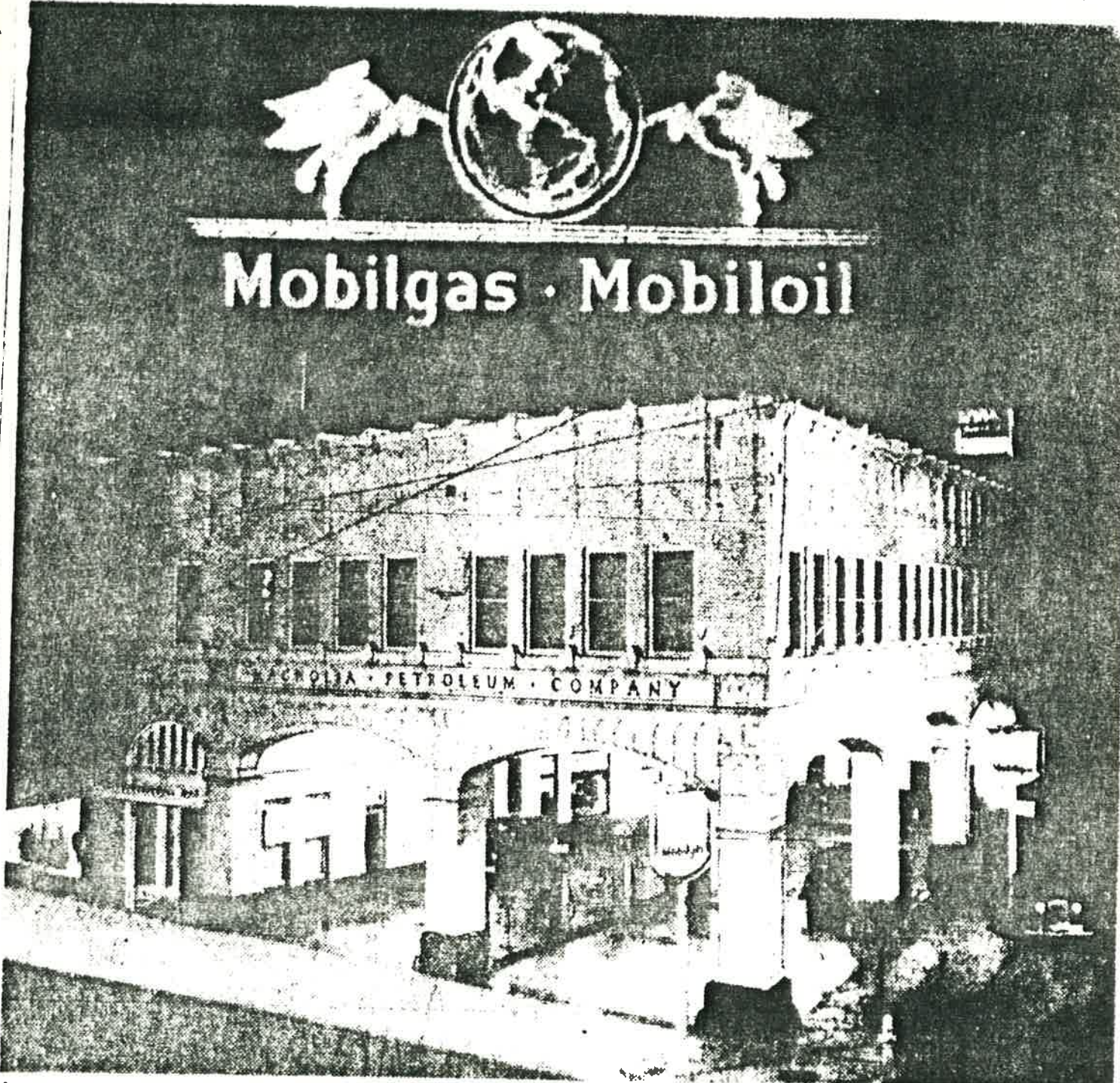
the Mi-
quite
ance as
1939

in says
the for
ent the
E
Y WITH
SIGNED
VEVE
he ap-

ractive
gn, and
on that
le in-
1920-
stlist.
in the
day of
as Gull
the
of
the 91
1938

the
ed in
moving
u me-
e over
mean
de-

pa.
Pre-
public
ether
made
upon
today.



→ The huge neon sign erected on the office building of Magnolia Petroleum company, at Broadway and Pecan street, has been the subject of much favorable comment. It is 60 feet long and 25 feet, 3 inches high. The horses are 12 feet high and the world globe is

18 feet high with the colors of the various countries being outlined in different colored neon tubing. This sign is a duplicate of one built for Magnolia by the Matteson-Southwest, Inc., of Houston. The local sign was built in Dallas by the Outdoor Electric Advertising company.

SPECIAL VALUE | **History Is Made**

