



**Historic
Departmental
Credit Hour Production**



October 2006

LD
786
H57
2006

Table of Contents

Cameron University Total Credit Hour Production

Total Credit Hour Production 1
Cameron University Productivity 1
Undergraduate Credit Hour Production 2
Graduate Credit Hour Production 2
Credit Hour Production Breakdown for AY 2005 – 2006 3
Credit Hour Production by Day and Night Classes 3
Undergraduate Productivity AY 2005 – 2006 4
Productivity and FTE by Department 5

Credit Hour Production by Departments

Department of Agriculture 6
Department of Art 7
Department of Biology 8
Department of Business
 Undergraduate 9
 Graduate 10
Department of Communications 11
Department of Criminal Justice and Sociology 12
Department of Education
 Undergraduate 13
 Graduate 14
Department of English & Foreign Language 15
Department of Health and Physical Education 16
Department of History and Government 17
Department of Mathematical Science 18
Department of Military Science 19
Department of Multimedia Design 20
Department of Music 21
Department of Physical Science 22
Department of Psychology and Human Ecology
 Undergraduate 23
 Graduate 24
Department of Technology 25
Department of Theatre Arts 26
University Courses 27





Total Credit Hour Production
Academic Year 2005 - 2006

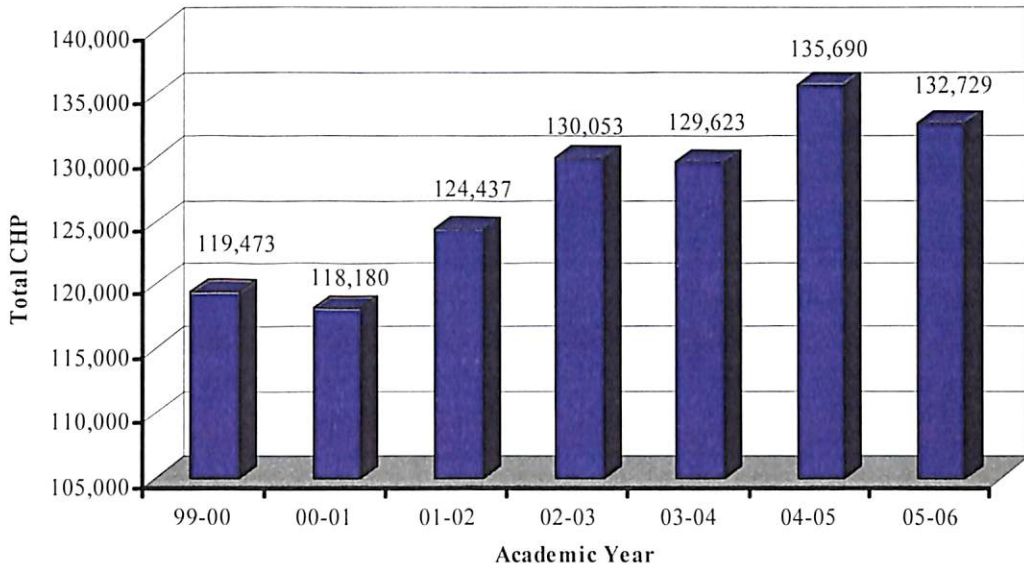


Historic Enrollment

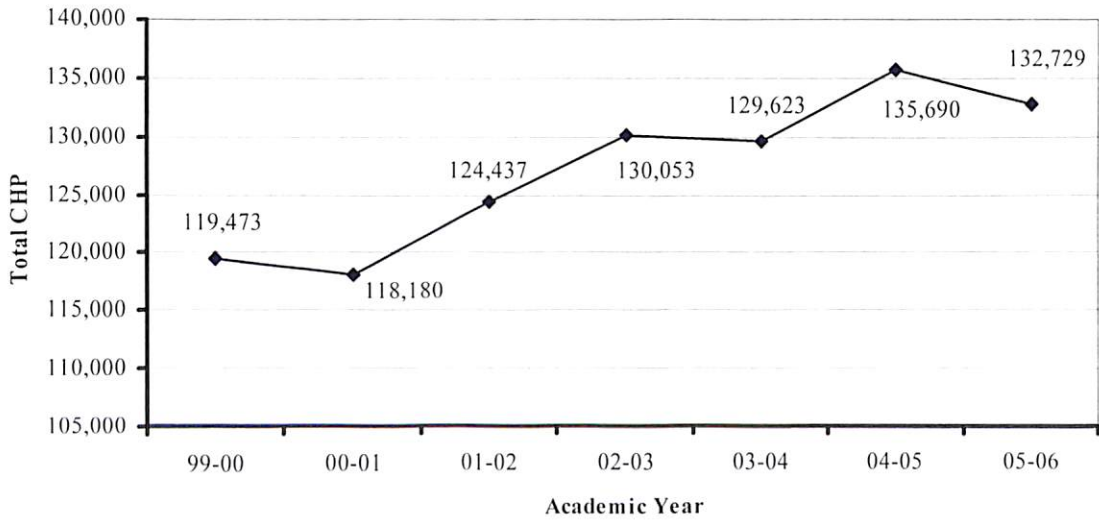
Total Credit Hour Production

Academic Year	99-00	00-01	01-02	02-03	03-04	04-05	05-06
CHP	119,473	118,180	124,437	130,053	129,623	135,690	132,729

Total Credit Hour Production



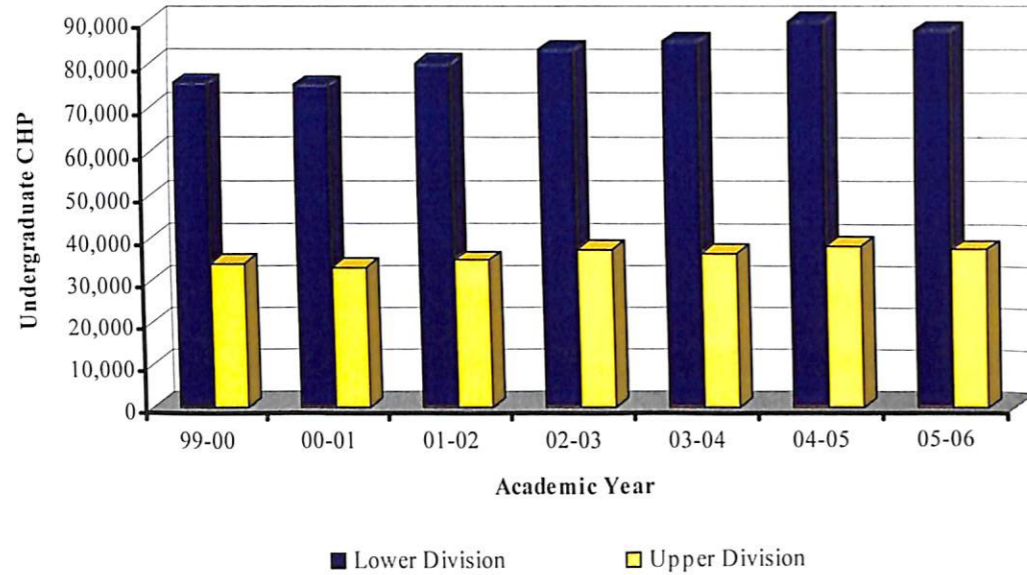
Cameron University Productivity



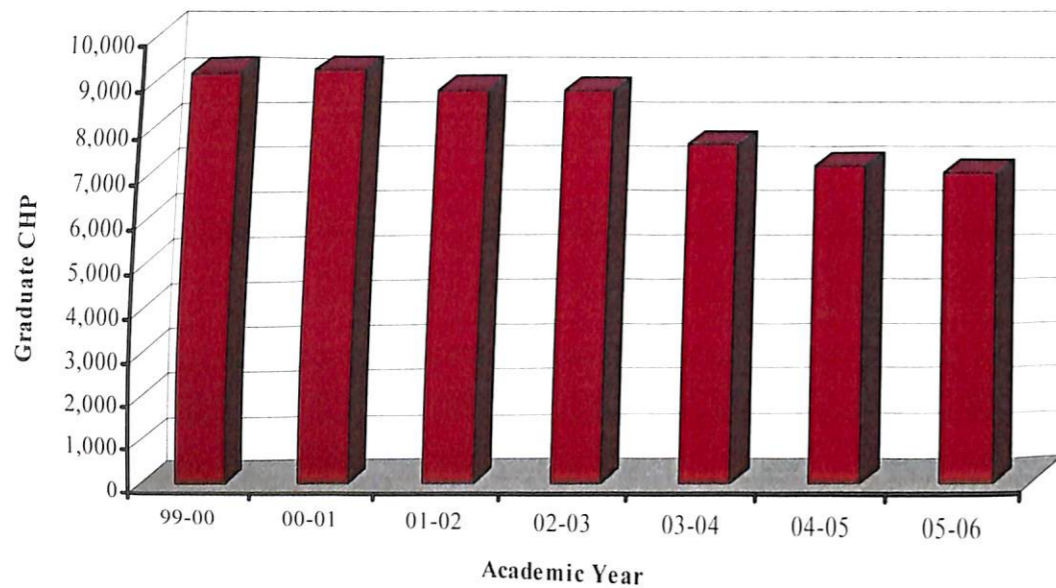
Historic Enrollment

October 200

Undergraduate Credit Hour Production							
Academic Year	99-00	00-01	01-02	02-03	03-04	04-05	05-06
Lower Division	75,915	75,585	80,515	83,718	85,399	89,958	87,825
Upper Division	34,350	33,320	35,117	37,572	36,625	38,651	37,959



Graduate Credit Hour Production							
Academic Year	99-00	00-01	01-02	02-03	03-04	04-05	05-06
Graduate CHP	9,208	9,275	8,805	8,763	7,599	7,081	6,945

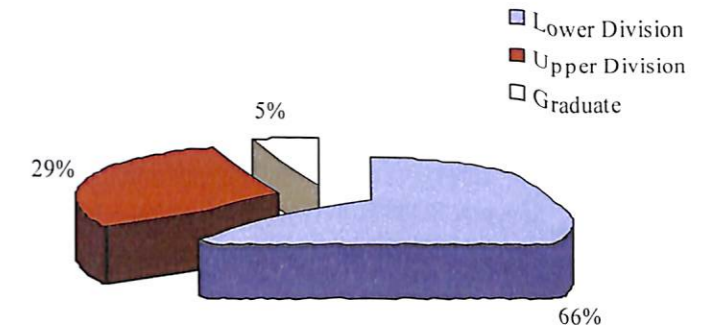


October 2006

Historic Enrollment

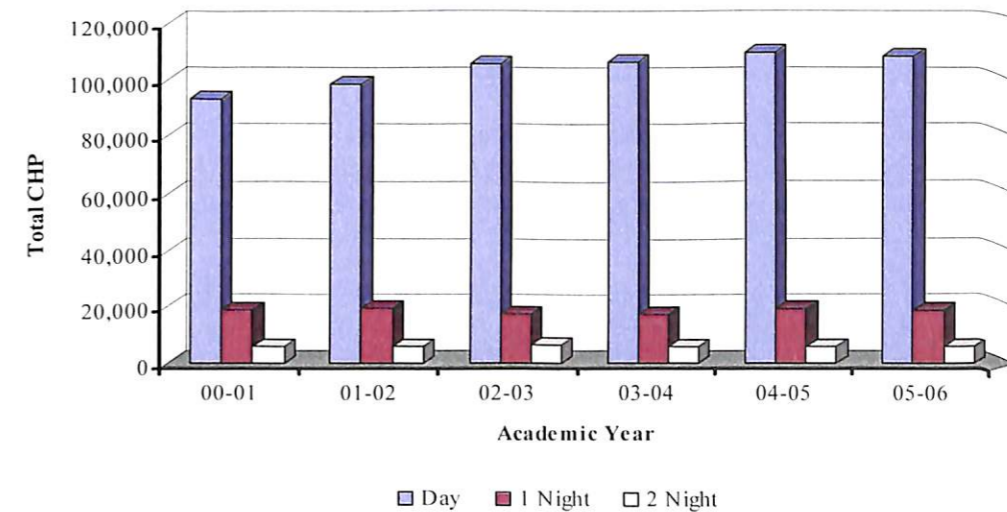
Credit Hour Production Breakdown for Academic Year 2005-2006

Lower Division	87,825
Upper Division	37,959
Graduate	6,945

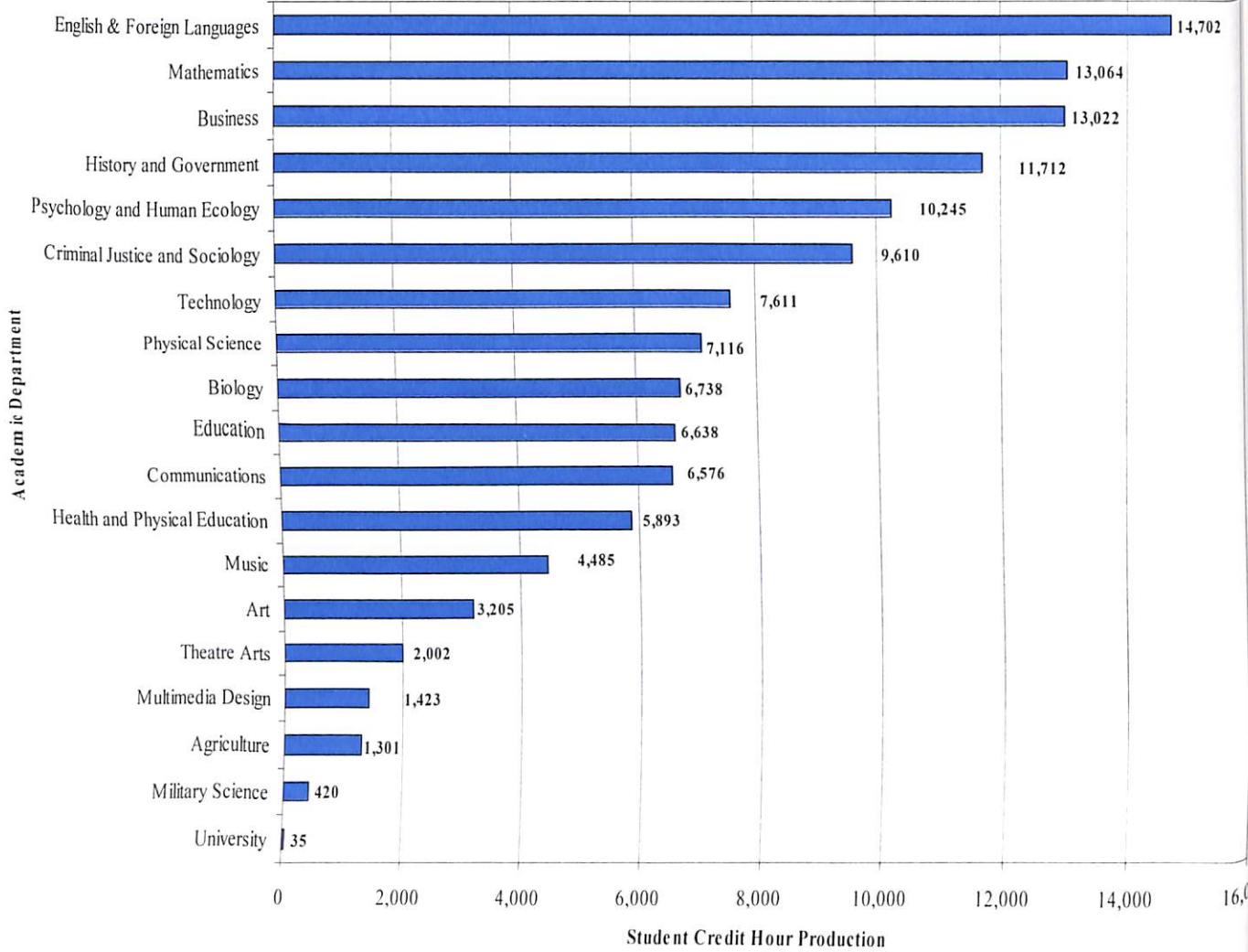


Credit Hour Production by Day and Night Classes

Academic Year	Day	1 Night	2 Night	Total
99-00				
00-01	93,242	18,860	6,078	118,180
01-02	98,461	19,761	6,215	124,437
02-03	105,549	17,928	6,576	130,053
03-04	106,024	17,827	5,772	129,623
04-05	109,790	19,780	6,120	135,690
05-06	108,230	18,732	5,767	132,729



Cameron University Undergraduate Productivity AY 2005-2006



Cameron University Productivity and FTE by Department
AY 2005-2006

Department	Departmental HRS			Total Hours	Total FTE	Percentage of Departmental FTE		
	Day	1 Night	2 Night			Lower	Upper	Graduate
Total University	108,230	18,732	5,767	132,729	4,482	65%	28%	6%
School of Business								
Business	11,540	3,418	276	15,234	526	33.3%	49.2%	17.5%
School of Education and Behavioral Science								
Education	7,458	1,241	366	9,065	322	16.1%	52.5%	31.4%
Health and Physical Education	5,337	309	277	5,923	198	56.1%	43.4%	0.5%
Psychology and Human Ecology	8,793	2,826	696	12,315	428	44.2%	35.7%	20.1%
School of Liberal Arts								
Art	3,094	126	0	3,220	107	77.6%	21.5%	0.9%
Communications	5,751	537	288	6,576	219	67.1%	32.9%	0.0%
Criminal Justice and Sociology	7,366	1,308	936	9,610	321	62.9%	37.1%	0.0%
English & Foreign Languages	12,428	1,914	537	14,879	497	82.5%	16.1%	1.4%
History and Government	9,654	1,425	633	11,712	391	87.7%	12.3%	0.0%
Music	4,173	108	204	4,485	149	79.2%	20.8%	0.0%
Theatre	1,639	174	189	2,002	67	85.1%	14.9%	0.0%
School of Science and Technology								
Agriculture	1,280	21	0	1,301	43	51.2%	48.8%	0.0%
Biological Science	5,524	1,214	0	6,738	225	92.4%	7.6%	0.0%
Technology	6,206	1,306	99	7,611	254	67.7%	32.3%	0.0%
Mathematical Science	10,092	2,161	811	13,064	435	91.0%	9.0%	0.0%
Military Science	420	0	0	420	14	35.7%	64.3%	0.0%
Multimedia Design	1,375	48	0	1,423	47	68.1%	31.9%	0.0%
Physical Science	6,067	594	455	7,116	237	86.9%	13.1%	0.0%
University								
University	32	2	0	35	1	100.0%	0.0%	0.0%

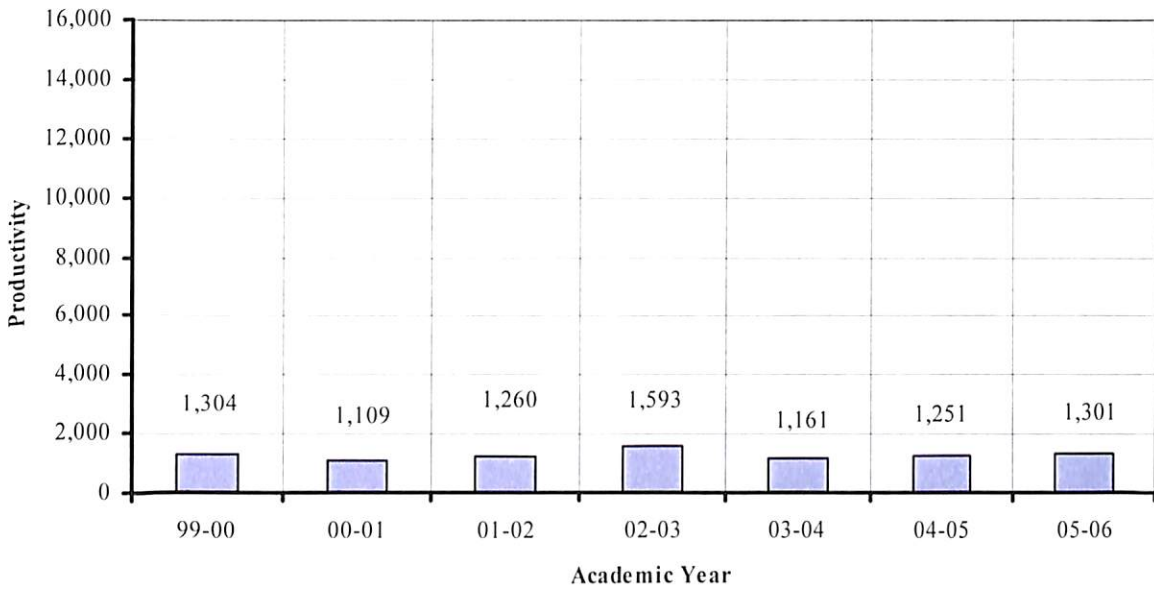


Historic Enrollment

Department of Agriculture

	99-00	00-01	01-02	02-03	03-04	04-05	05-06
Credit Hour Production	1,304	1,109	1,260	1,593	1,161	1,251	1,301
FTE	43	37	42	53	39	41	43

CU-Agriculture Department Productivity

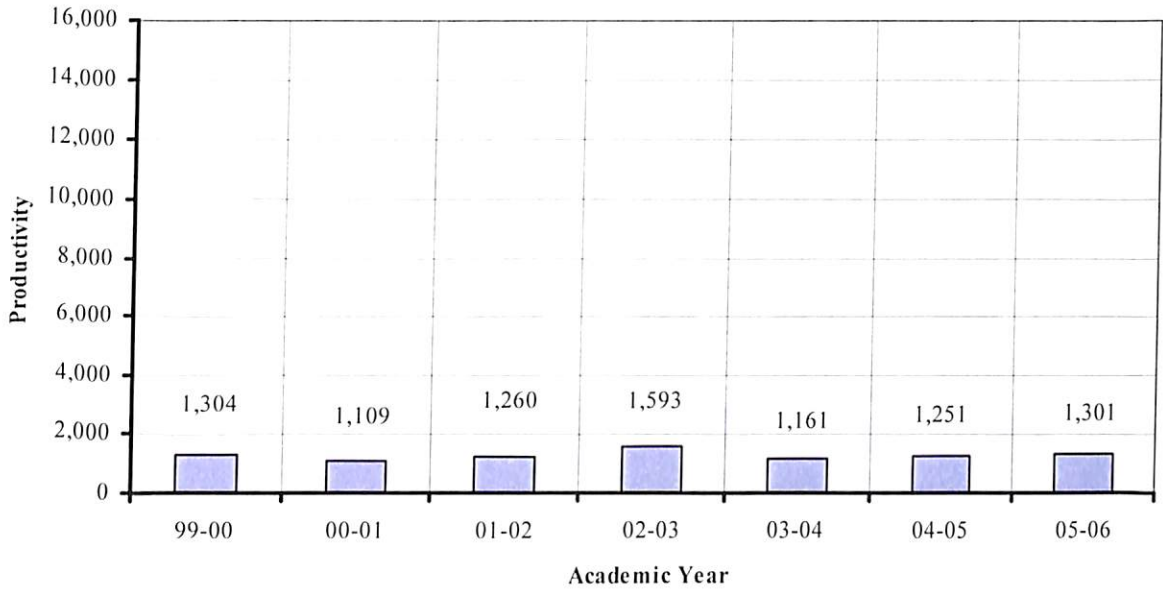


Historic Enrollment

Department of Agriculture

	99-00	00-01	01-02	02-03	03-04	04-05	05-06
Credit Hour Production	1,304	1,109	1,260	1,593	1,161	1,251	1,301
FTE	43	37	42	53	39	41	43

CU-Agriculture Department Productivity



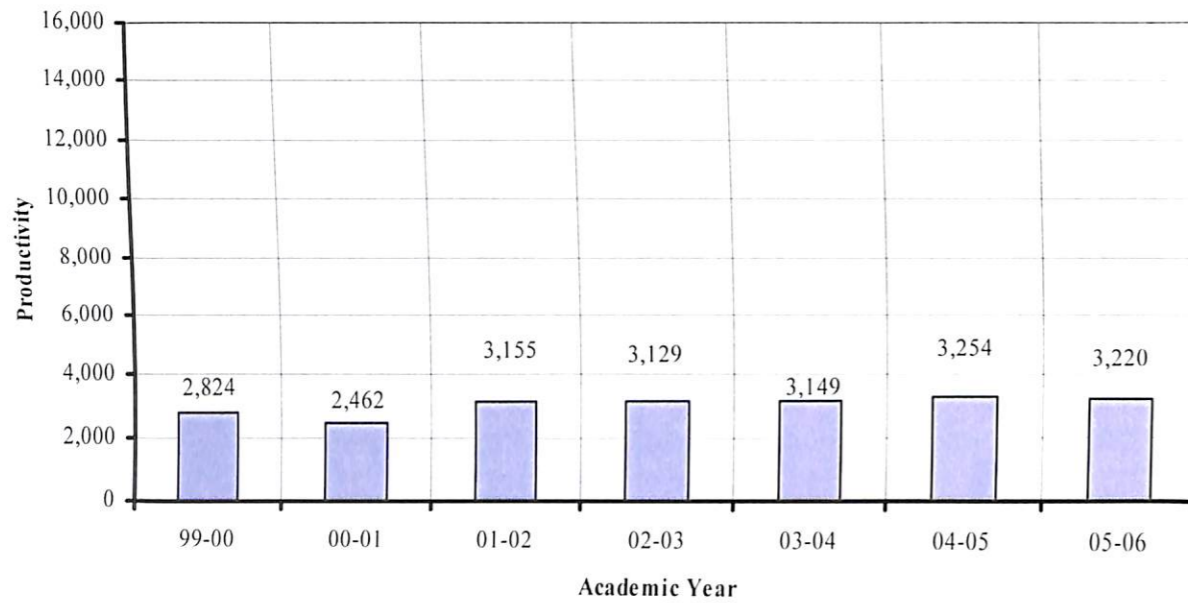
Historic Enrollment

October 2006

Department of Art

	99-00	00-01	01-02	02-03	03-04	04-05	05-06
Credit Hour Production	2,824	2,462	3,155	3,129	3,149	3,254	3,220
FTE	94	82	106	104	106	109	107

CU-Art Department Productivity

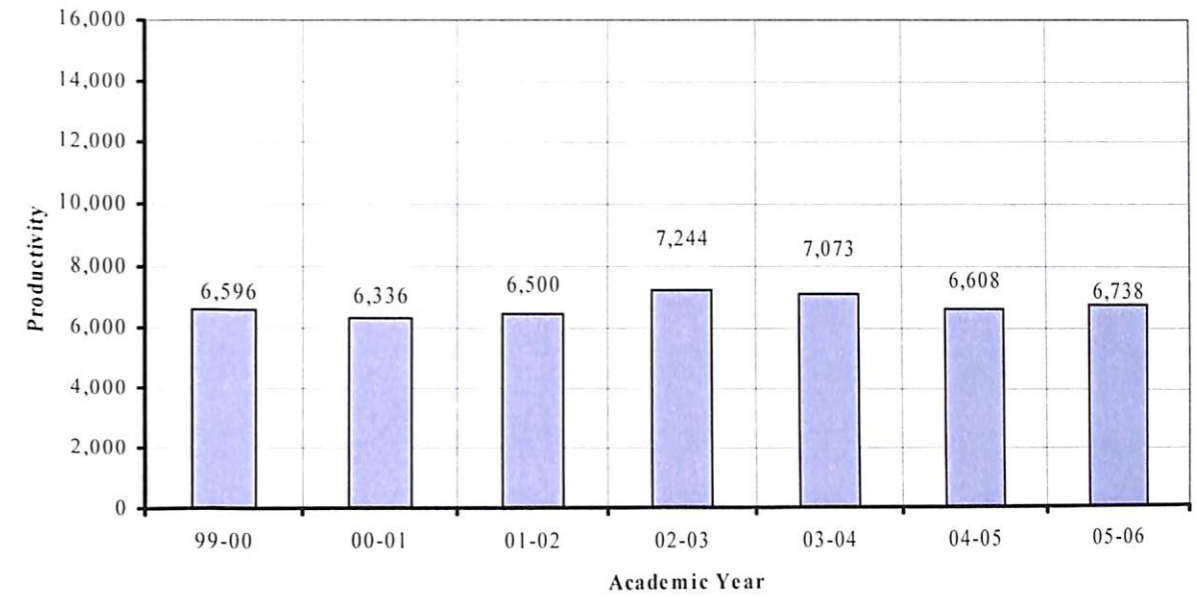


Historic Enrollment

Department of Biology

	99-00	00-01	01-02	02-03	03-04	04-05	05-06
Credit Hour Production	6,596	6,336	6,500	7,244	7,073	6,608	6,738
FTE	220	212	216	241	236	220	225

CU-Biology Department Productivity

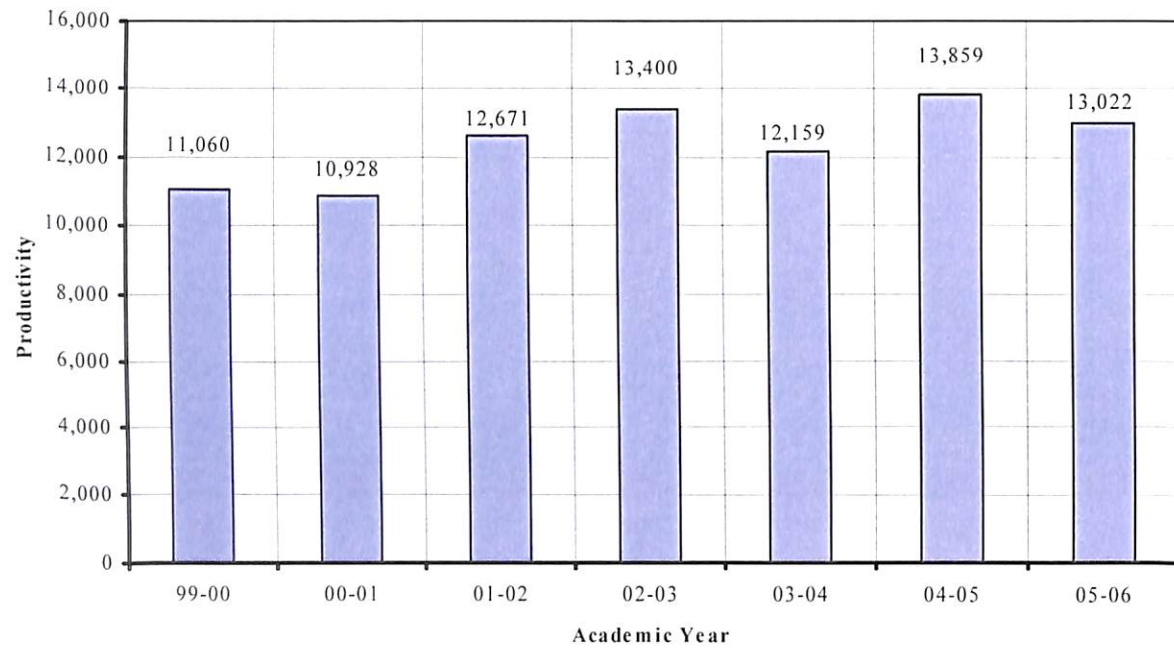


Historic Enrollment

Department of Business Undergraduate

	99-00	00-01	01-02	02-03	03-04	04-05	05-06
Credit Hour Production	11,060	10,928	12,671	13,400	12,159	13,859	13,022
FTE	368	364	422	447	406	462	434

CU-Business Department Productivity

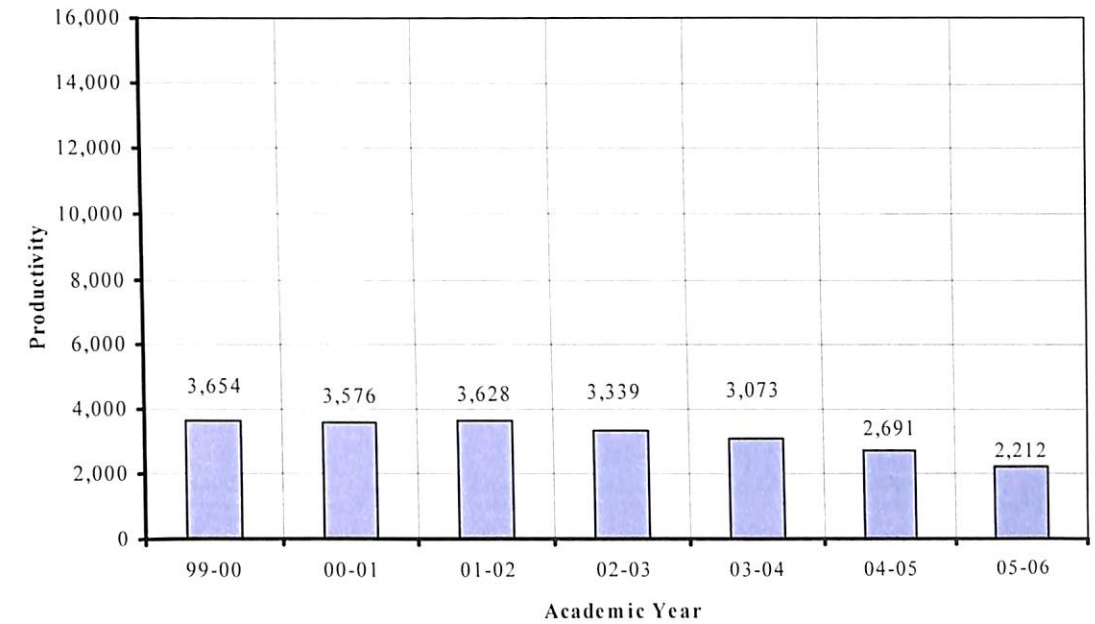


Historic Enrollment

Department of Business Graduate

	99-00	00-01	01-02	02-03	03-04	04-05	05-06
Graduate Credit Hour Production	3,654	3,576	3,628	3,339	3,073	2,691	2,212
Graduate FTE	152	149	151	139	128	112	92

CU-Business Department Productivity

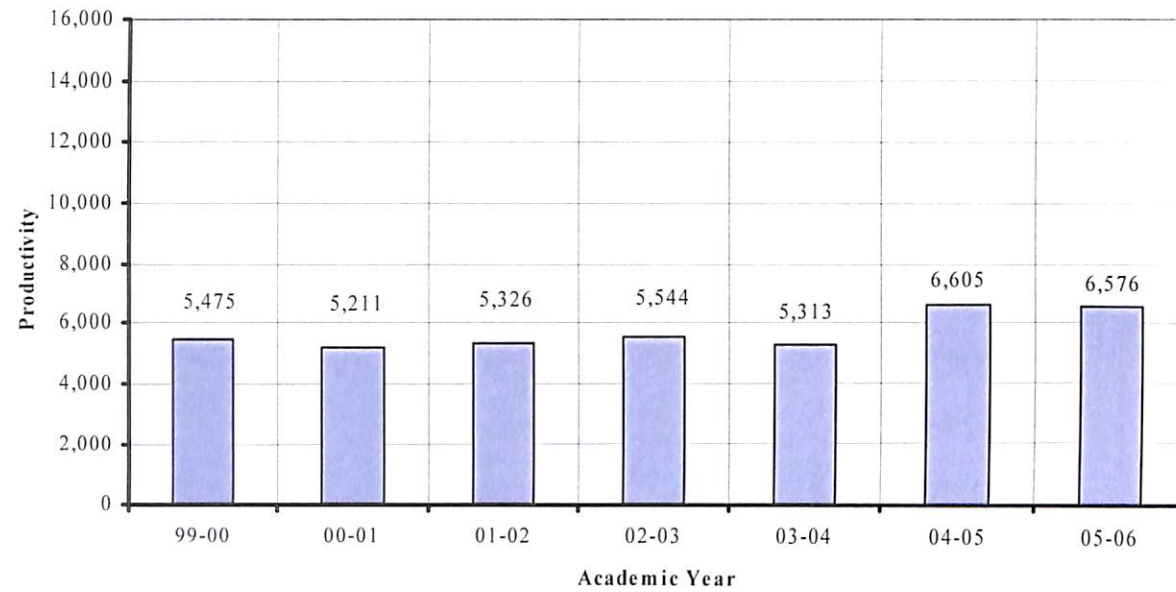


Historic Enrollment

Department of Communications

	99-00	00-01	01-02	02-03	03-04	04-05	05-06
Credit Hour Production	5,475	5,211	5,326	5,544	5,313	6,605	6,576
FTE	183	174	178	185	177	220	219

CU-Communications Department Productivity

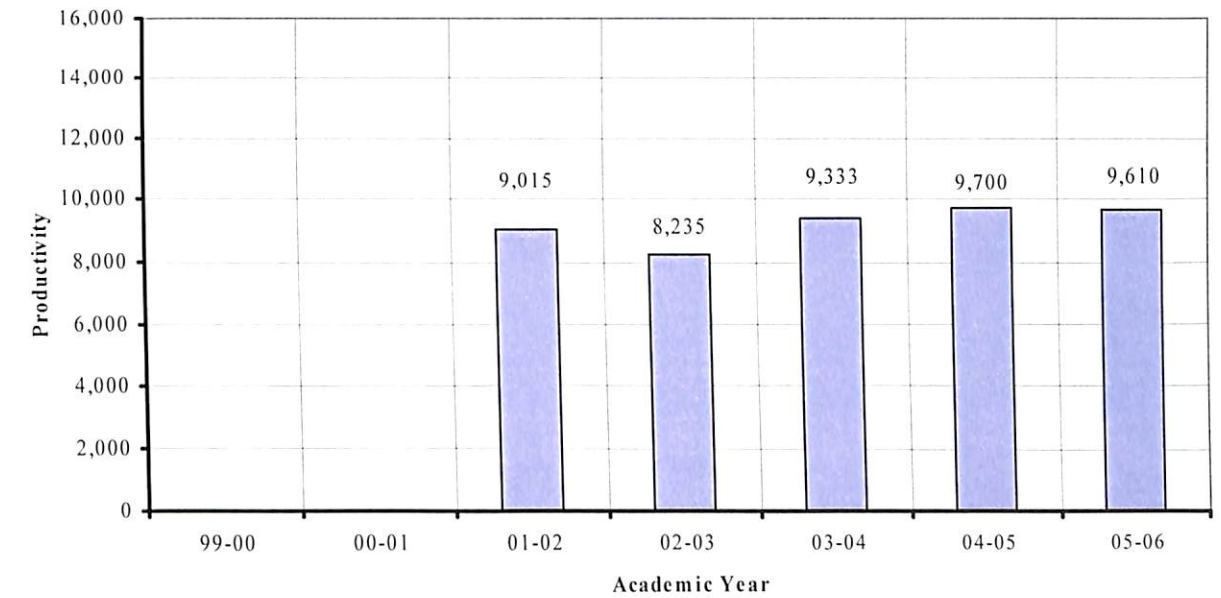


Historic Enrollment

Department of Criminal Justice and Sociology

	99-00	00-01	01-02	02-03	03-04	04-05	05-06
Credit Hour Production			9,015	8,235	9,333	9,700	9,610
FTE			301	275	312	324	321

CU-Criminal Justice and Sociology Department Productivity

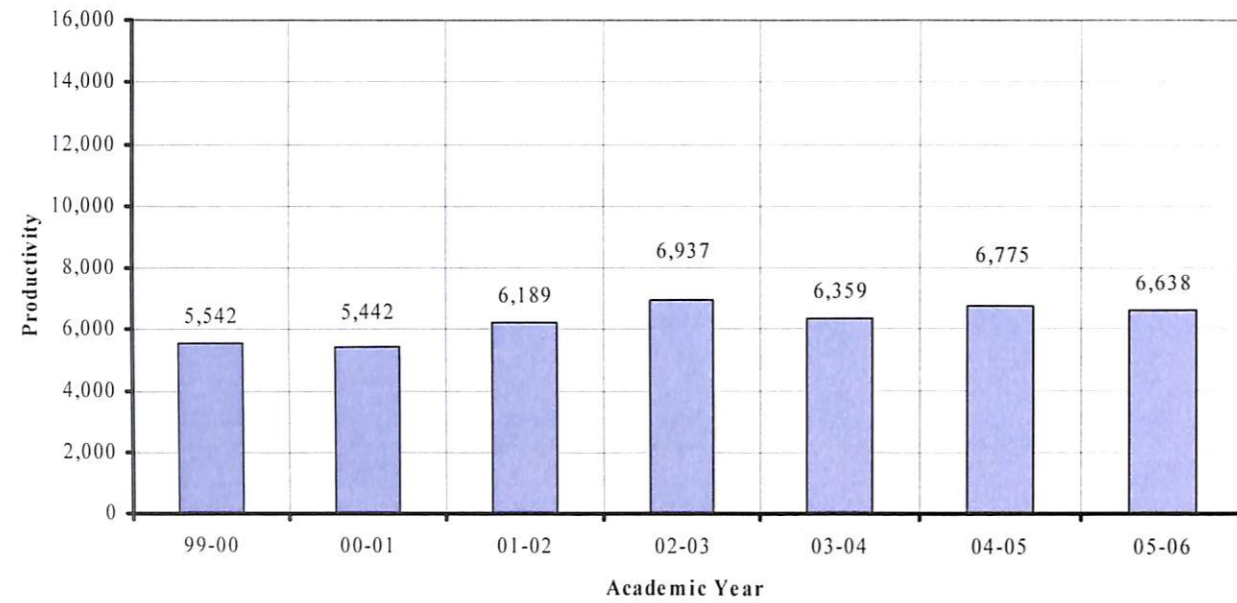


Historic Enrollment

Department of Education Undergraduate

	99-00	00-01	01-02	02-03	03-04	04-05	05-06
Undergraduate Credit Hour Production	5,542	5,442	6,189	6,937	6,359	6,775	6,638
Undergraduate FTE	185	182	207	231	212	226	221

CU-Education Department Productivity

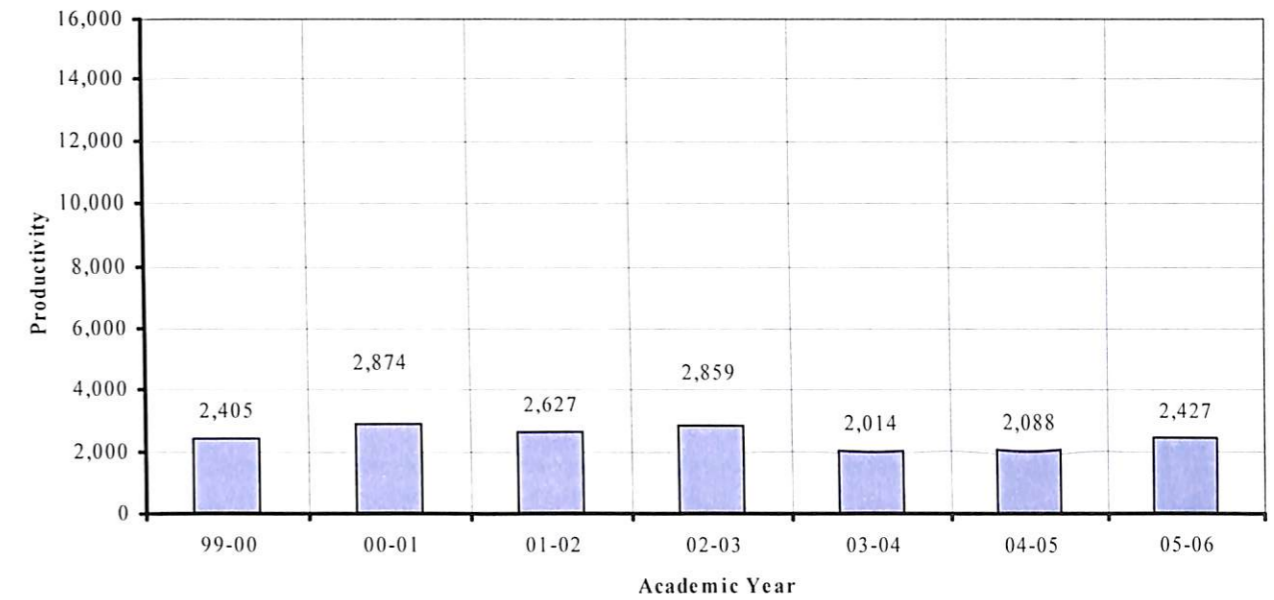


Historic Enrollment

Department of Education Graduate

	99-00	00-01	01-02	02-03	03-04	04-05	05-06
Graduate Credit Hour Production	2,405	2,874	2,627	2,859	2,014	2,088	2,427
Graduate FTE	100	120	109	119	84	87	101

CU-Education Department Productivity

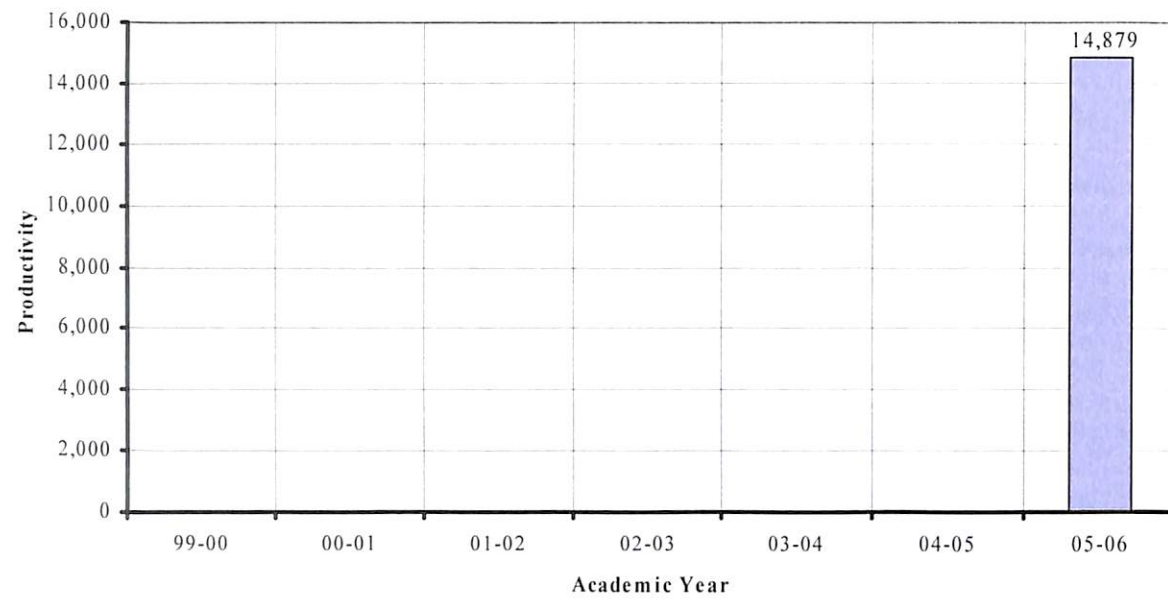


Historic Enrollment

Department of English & Foreign Languages

	99-00	00-01	01-02	02-03	03-04	04-05	05-06
Credit Hour Production							14,879
FTE							497

CU-English & Foreign Languages Department Productivity

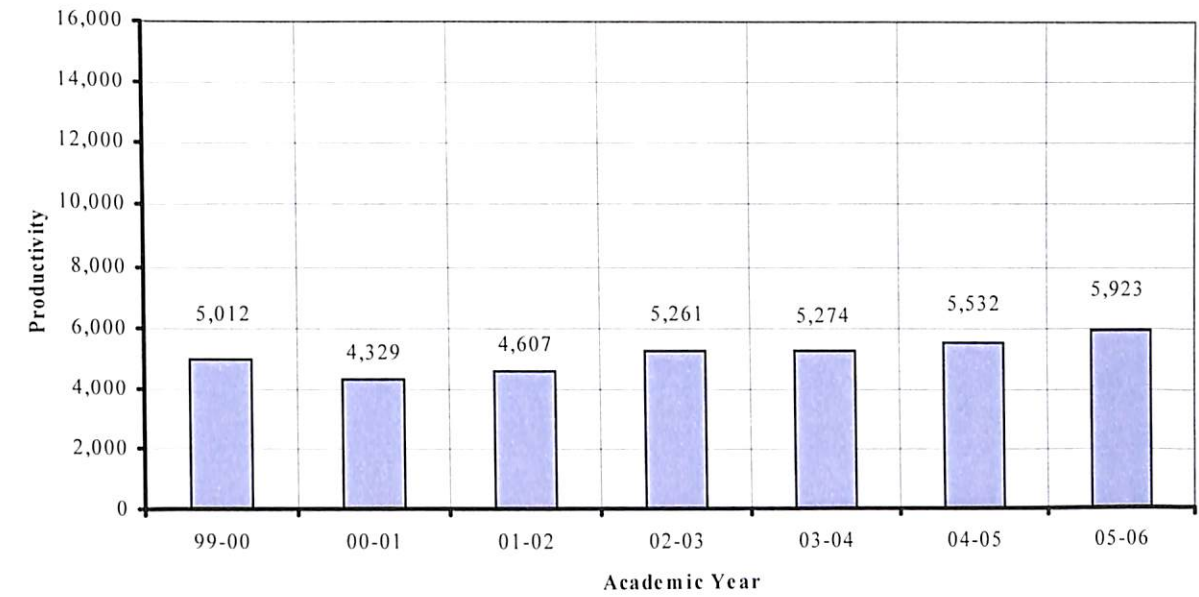


Historic Enrollment

Department of Health and Physical Education

	99-00	00-01	01-02	02-03	03-04	04-05	05-06
Credit Hour Production	5,012	4,329	4,607	5,261	5,274	5,532	5,923
FTE	168	145	154	175	177	185	198

CU-Health and Physical Education Department Productivity



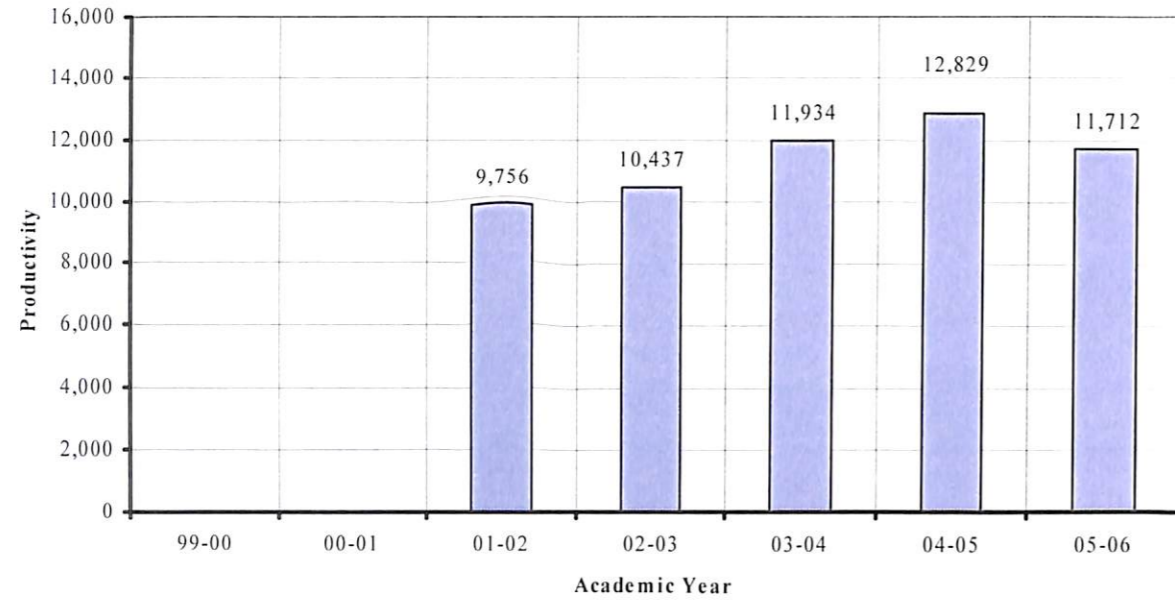
Historic Enrollment

October 2006

Department of History and Government

	99-00	00-01	01-02	02-03	03-04	04-05	05-06
Credit Hour Production			9,756	10,437	11,934	12,829	11,712
FTE			325	348	398	427	391

CU-History and Government Department Productivity

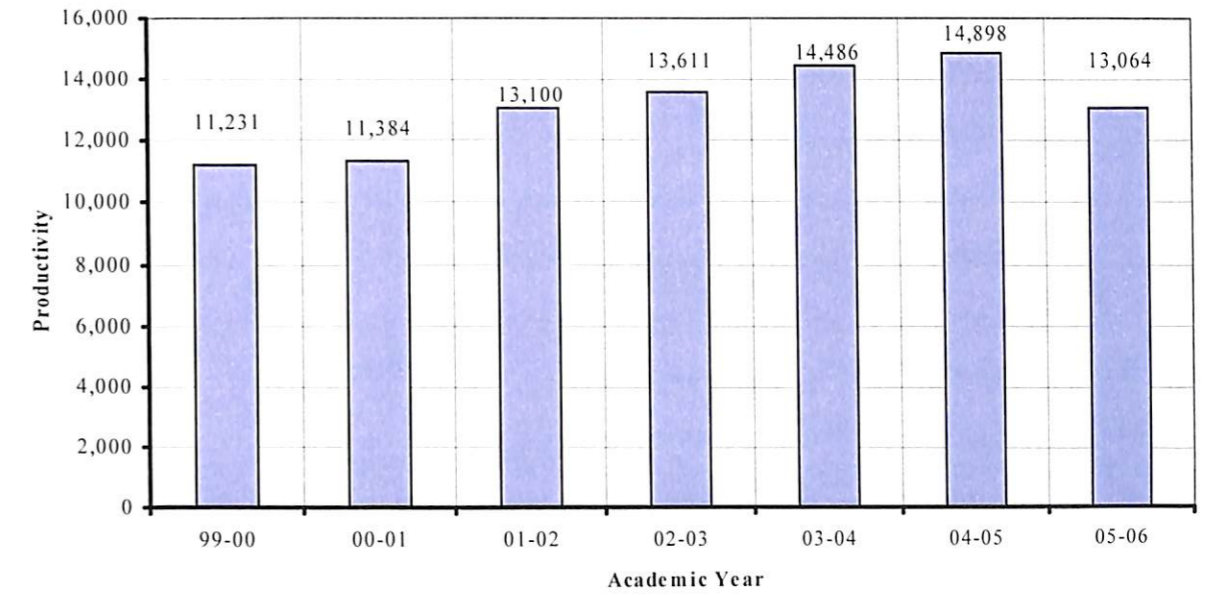


Historic Enrollment

Department of Mathematical Science

	99-00	00-01	01-02	02-03	03-04	04-05	05-06
Credit Hour Production	11,231	11,384	13,100	13,611	14,486	14,898	13,064
FTE	374	379	437	453	483	497	435

CU-Mathematical Science Department Productivity

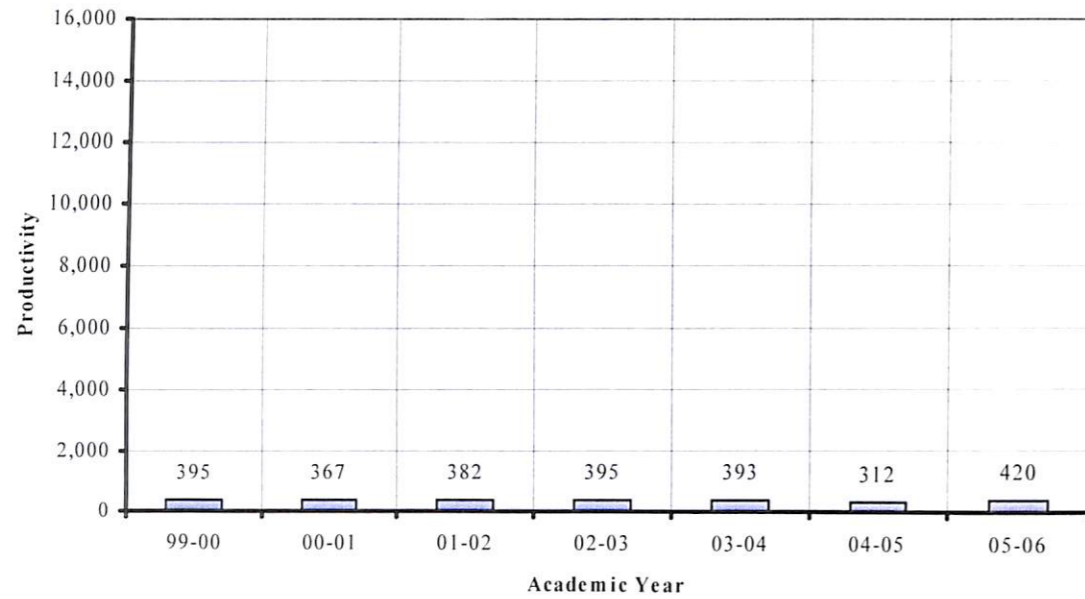


Historic Enrollment

Department of Military Science

	99-00	00-01	01-02	02-03	03-04	04-05	05-06
Credit Hour Production	395	367	382	395	393	312	420
FTE	13	12	13	14	13	10	14

CU-Military Science Department Productivity

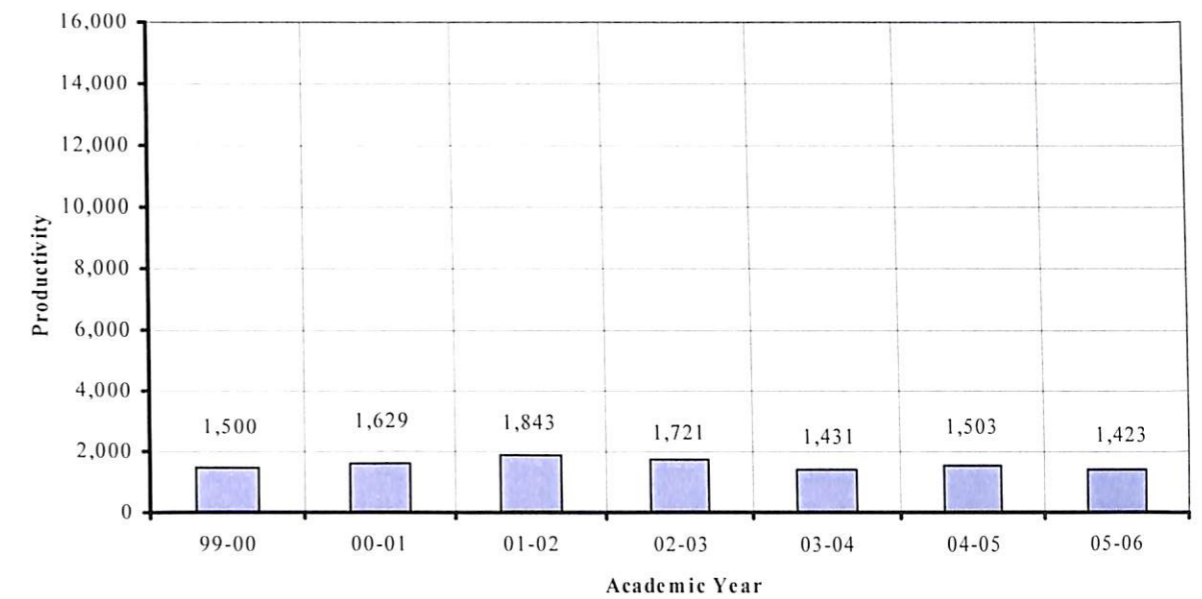


Historic Enrollment

Department of Multimedia Design

	99-00	00-01	01-02	02-03	03-04	04-05	05-06
Credit Hour Production	1,500	1,629	1,843	1,721	1,431	1,503	1,423
FTE	50	54	61	57	48	50	47

CU-Multimedia Design Department Productivity



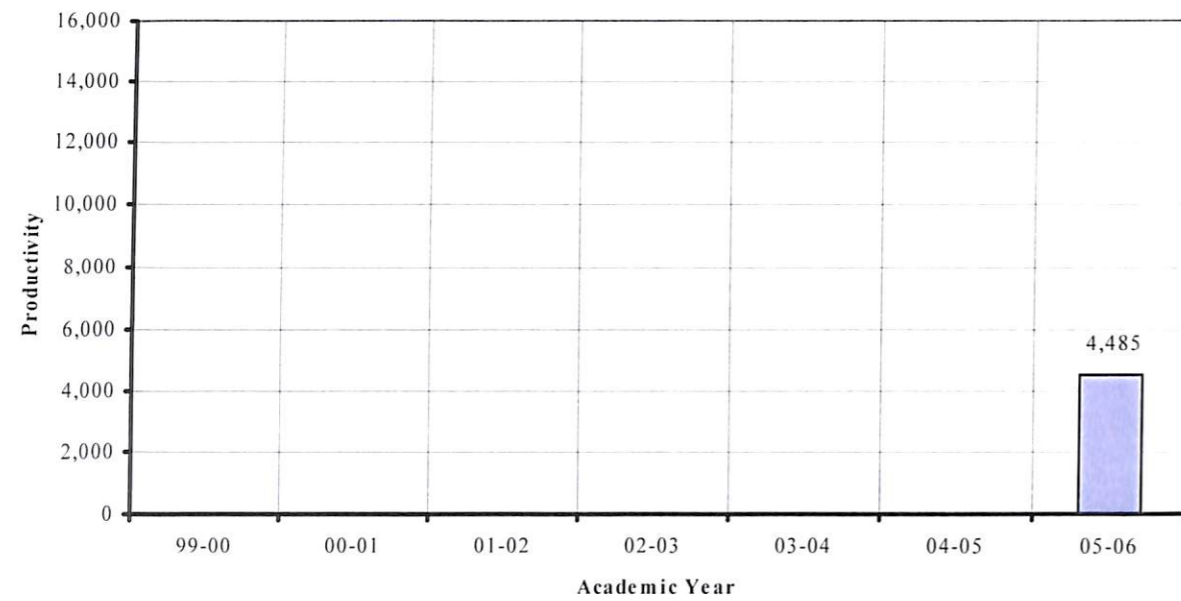
Historic Enrollment

October 2006

Department of Music

	99-00	00-01	01-02	02-03	03-04	04-05	05-06
Credit Hour Production							4,485
FTE							149

CU-Music Department Productivity

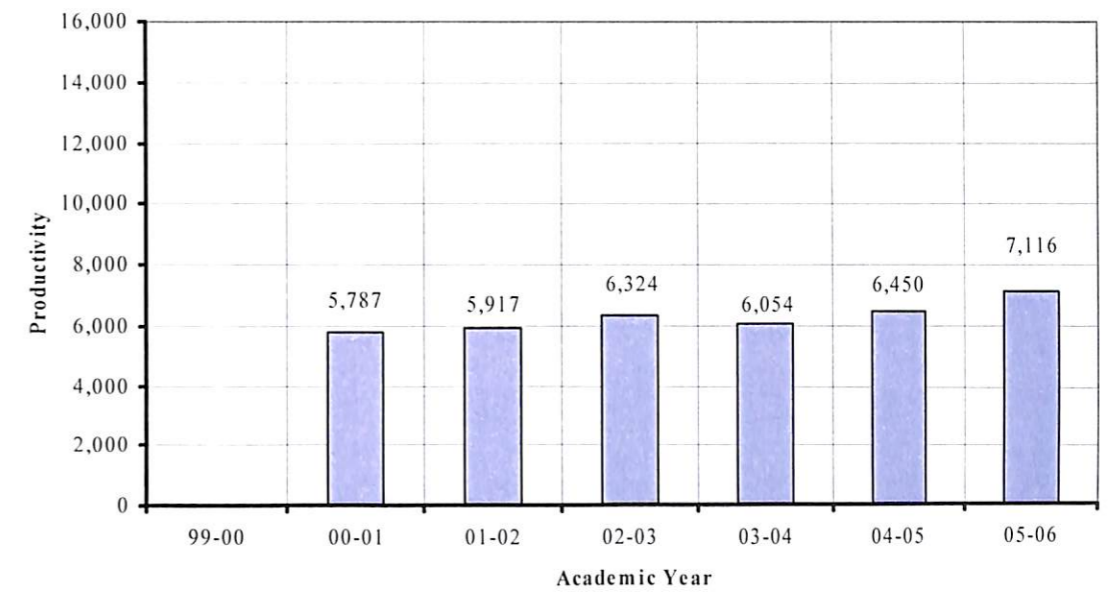


Historic Enrollment

Department of Physical Science

	99-00	00-01	01-02	02-03	03-04	04-05	05-06
Credit Hour Production		5,787	5,917	6,324	6,054	6,450	7,116
FTE		193	197	211	201	215	237

CU-Physical Science Department Productivity



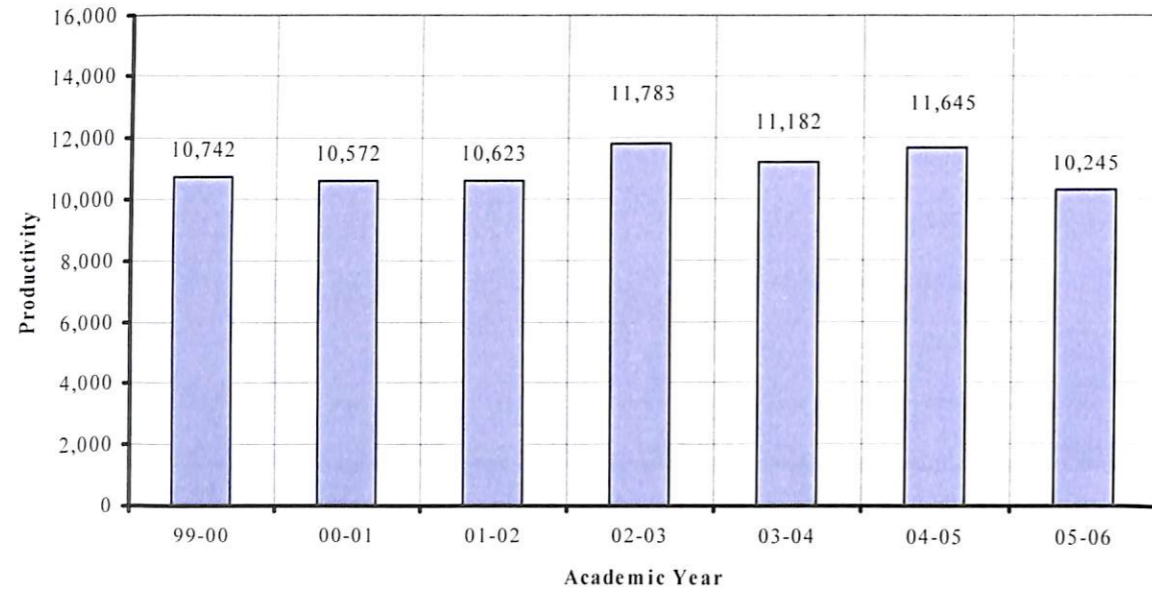
Historic Enrollment

October 2006

Department of Psychology and Human Ecology Undergraduate

	99-00	00-01	01-02	02-03	03-04	04-05	05-06
Undergraduate Credit Hour Production	10,742	10,572	10,623	11,783	11,182	11,645	10,245
Undergraduate FTE	358	353	354	393	372	388	342

CU-Psychology and Human Ecology Department Productivity

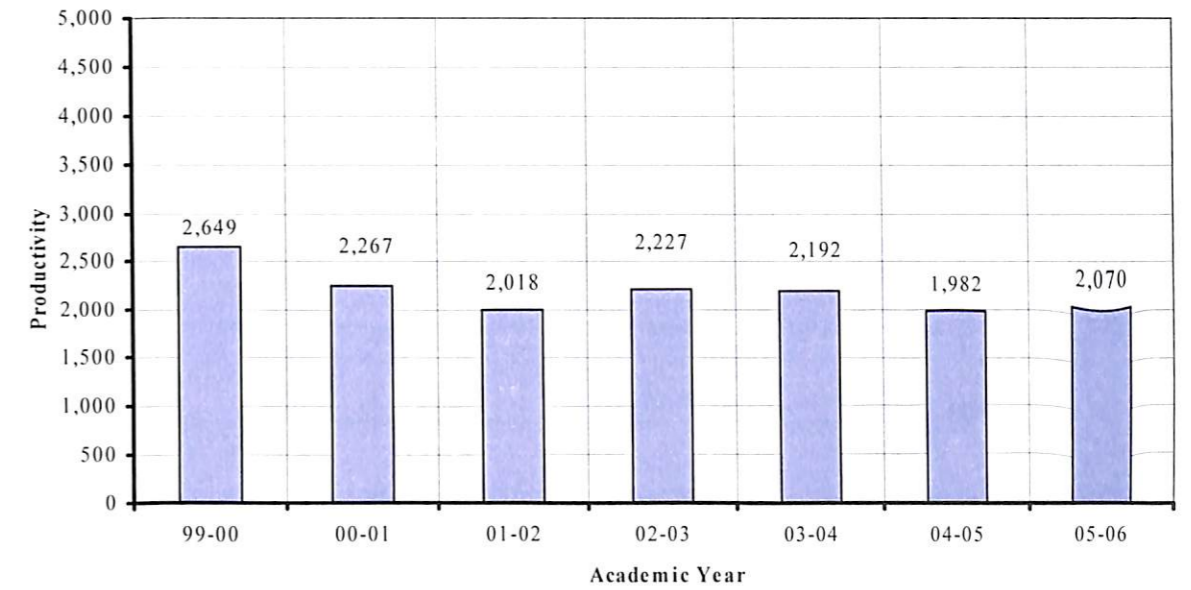


Historic Enrollment

Department of Psychology and Human Ecology Graduate

	99-00	00-01	01-02	02-03	03-04	04-05	05-06
Graduate Credit Hour Production	2,649	2,267	2,018	2,227	2,192	1,982	2,070
Graduate FTE	110	94	84	93	91	83	86

CU-Psychology and Human Ecology Department Productivity

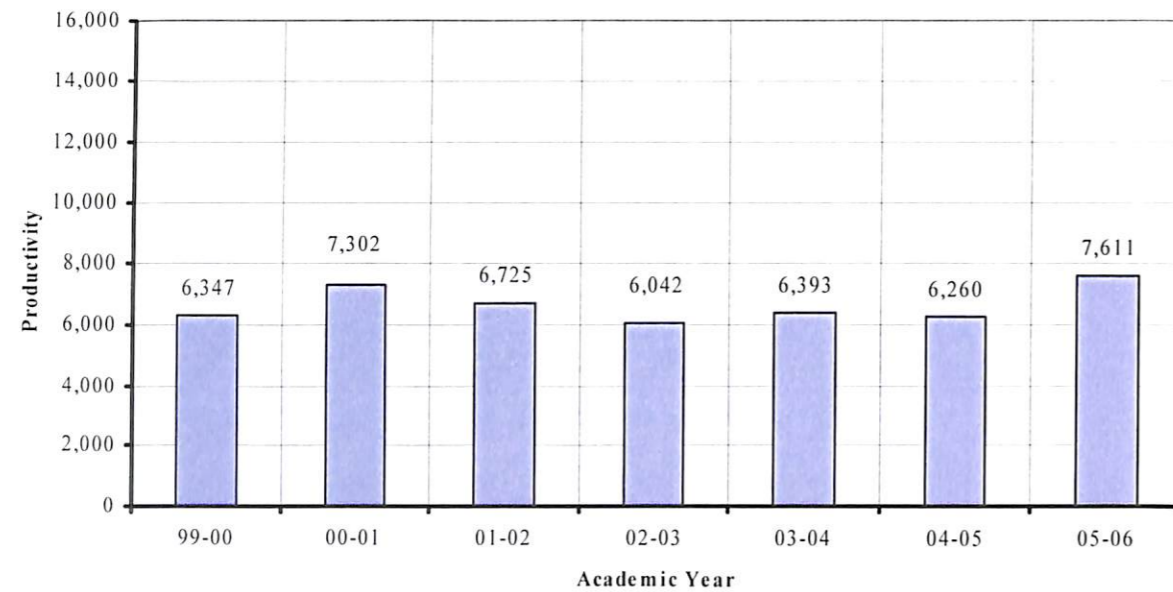


Historic Enrollment

Department of Technology

	99-00	00-01	01-02	02-03	03-04	04-05	05-06
Credit Hour Production	6,347	7,302	6,725	6,042	6,393	6,260	7,611
FTE	212	243	224	202	213	209	254

CU-Technology Department Productivity

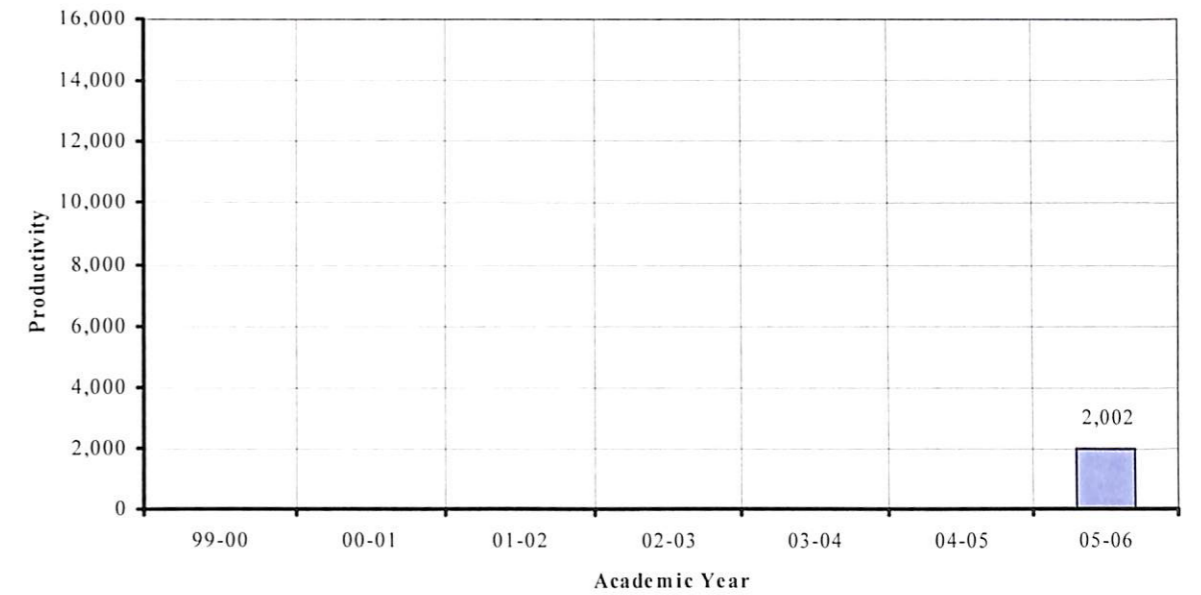


Historic Enrollment

Department of Theatre Arts

	99-00	00-01	01-02	02-03	03-04	04-05	05-06
Credit Hour Production							2,002
FTE							67

CU-Theatre Arts Department Productivity



Historic Enrollment

University Courses

	99-00	00-01	01-02	02-03	03-04	04-05	05-06
Credit Hour Production	329	532	277	192	94	70	35
FTE	11	18	9	6	3	2	1

CU-University Courses Productivity

