



**LEICESTER MUSEUM  
AND THE SCHOOLS**

**AN ILLUSTRATED ACCOUNT  
OF THE WORK OF THE  
SCHOOLS SERVICE DEPARTMENT**



## FOREWORD

Since the issue in 1934 of the first edition of *Leicester Museum and the Schools* many changes have taken place in the service, which has continued to grow and to widen the scope of its activities. In 1937 the Leicestershire County Council, with the aid of the Carnegie United Kingdom Trust, gave a grant which enabled the loan service to be extended to include certain of the schools under the County Education Authority. Miss Ruth Weston, M.Sc., the first Organiser for School Service, whose enthusiasm and skill were responsible for the prominence achieved by the Service in the first ten years of its life, was succeeded on her resignation in 1940 by Miss Audrie Fitzjohn, M.Sc., and she in turn by Miss M. E. Pickles, B.Sc., the present Organiser, in 1943.

Under these members of the staff and their assistants the School Service rapidly expanded, and new quarters were taken for the department in Princess Road, but this in turn has now become too small to house the various activities of the School Service. In 1941 the department became responsible for circulating material from the College of Art Collections, while in 1942 the success of the Holidays-at-Home arrangements at the Museum led to the formation of Children's Clubs as a permanent feature of the work of the department. Again as a result of wartime conditions the service was extended in 1943 to units of H.M. Forces stationed in the area; teaching materials were borrowed and lectures were arranged for members of the Forces.

With the return to peace the way is again open for development in the department, and loans of material to Rehabilitation Centres and hospitals have recently been authorized by the Committee, while lectures are still given to men serving in the Forces and to prisoners of war.

This new edition of *Leicester Museum and the Schools* will, it is hoped, serve to bring to the notice of all those interested in educational work in the City and County the facilities offered by the School Service Department of the Museum in providing those visual aids which play so large a part in present day education.

M. B. Hodge, Director.

## LEICESTER MUSEUM AND THE SCHOOLS

The Leicester Museum Schools Service Department originated in 1924, when a resident guide-lecturer was appointed. Parties from schools, voluntary organisations and the general public thereby gained the advantages of a personal introduction to the collections and their background which had hitherto been lacking. The scheme rapidly became popular, and many city schools took advantage of the guide lecturer's services.

Seven years later a new line of activity was undertaken. Hitherto the department's function had been to explain the Museum to the visitors; now, in addition it was to take the Museum to the schools. In 1931 a collection of specimens, models and illustrations covering the whole field of educational activities was built up and mounted for transportation. A scheme of circulation was worked out in conjunction with the Education Committee, by which fortnightly deliveries were made to schools which sent in requests for material. The scheme was subsequently extended to county schools, deliveries in this case being monthly. This was the first large scale application of the schools loan idea in England, and, in response to its instant success, the collection has continued to grow rapidly, separate accommodation outside the Museum being necessitated by its expansion in 1941.

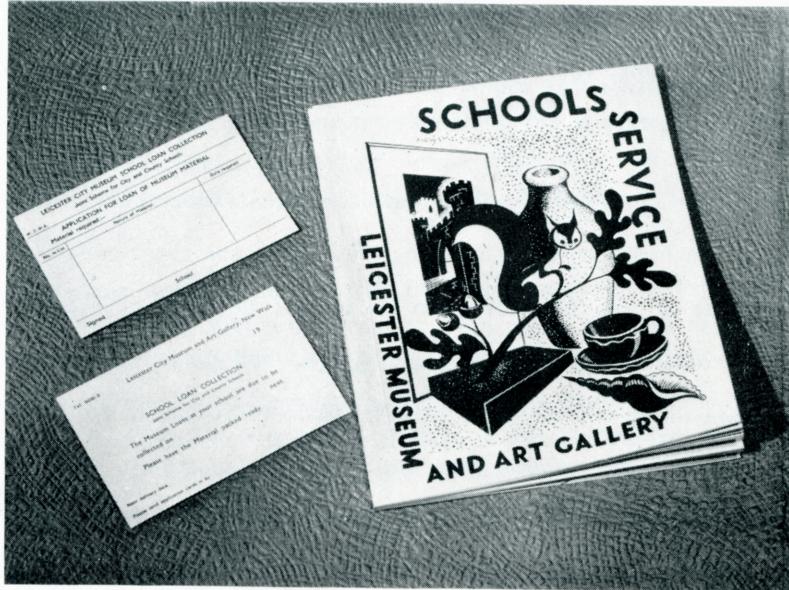
Despite war-time restrictions on transport, deliveries continued throughout the war, and were even extended to cover other spheres of educational work, especially Service Units. The collection having outgrown its present quarters, it has been necessary to restrict its growth, but in view of the increasing demand for material, this can only be a temporary check.



## THE SERVICE

The facilities offered by the Schools Service Department comprise three groups:

- (1) The loan collection consisting of two parts: specimens and models, and illustrations.
- (2) School visits to the Museum.
- (3) Children's Clubs.



### HOW TO BORROW

Every school in the city and many in the county are supplied with a catalogue of the available material and several application cards. (See above.) These cards, filled in with the details of cases required, are returned to the Museum. The cases are then packed, labelled and sent off by van to the schools. Deliveries are at present made at the beginning of each term in the city and every month in the county, but there is a prospect that these will be more frequent in the future. Occasional deliveries are made by hand or by private car during term time in the city area.

When the material is due to be returned, a reminder card is sent to the school. A van collects the cases on a given date and returns them to the Museum for checking, cleaning and repair if necessary.

The School Service Department is open to teachers and students for inspection from 9 a.m. till 1 p.m. and 2-30 p.m. till 5-30 p.m. (12 p.m. on Saturdays) and material may be chosen and taken away any time during those hours.

Suggestions for improvements and ideas for new cases are always welcome.

## SPECIMENS AND MODELS

The collection of glassware and pottery consists mainly of modern hand made examples which are sent out packed in boxes with sponge rubber or mounted in glass fronted oak cases.

An extensive collection of fabrics of different types is available, including hand-woven, hand-printed and machine woven and printed samples. These are either mounted in frames 24" x 32" or are sent out as curtain lengths with a runner for display purposes.

Loose and mounted samples of needlework, toys of various kinds, woodwork, metalwork and other crafts may also be borrowed.

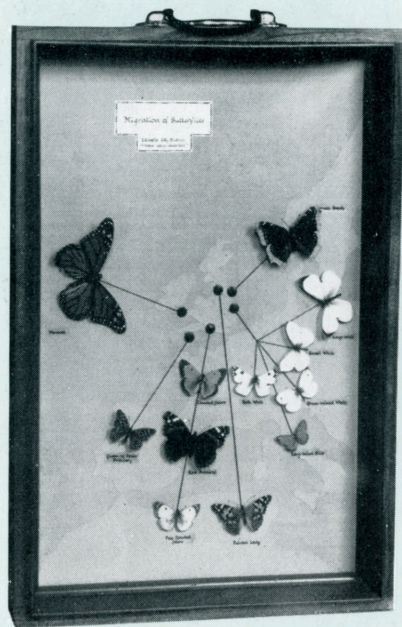


ART



## SPECIMENS AND MODELS

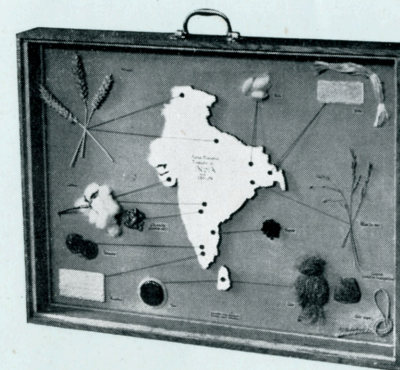
Insects and other invertebrate animals are mounted in glass topped cases and enlarged models of microscopic types are supplied. Amphibia are represented by plaster casts and dissections; birds and mammals by mounted specimens. A series of physiological models illustrates the structure of the more important organs of the human body. Models and specimens show some of the interesting features of plant life.



## BIOLOGY

## SPECIMENS AND MODELS

A number of cut out maps of different countries show the distribution of natural products of the region by actual specimens. Small scale models illustrate types of dwellings and their inhabitants throughout the world, and actual specimens from various countries are also available.



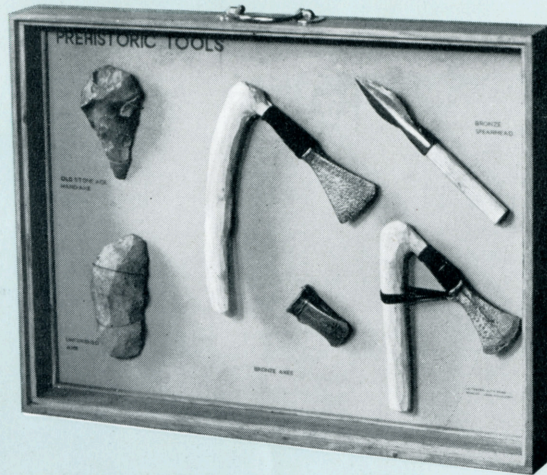
## GEOGRAPHY AND GEOLOGY





## SPECIMENS AND MODELS

Tools and other objects of everyday use of the Stone Age, Roman and Saxon periods are mounted in glass topped cases. Models of houses and costumes show the changing fashions in architecture and dress from prehistoric times to the nineteenth century.



## HISTORY

## SPECIMENS AND MODELS

A series of cases shows the stages in the manufacture of wool yarn, silk, linen, cotton and other industrial processes. Several of them relate to local industries.



## LEICESTER INDUSTRIES



## ILLUSTRATIONS

### ARCHITECTURE

The development of architecture in England in the Middle Ages is traced in a collection of framed photographs and postcards, showing general and detailed views of cathedrals, churches and castles.

### ART

Reproductions from all schools of painting are mounted in three sizes, 13" x 16", 16" x 22" and 24" x 32". Unframed reproductions for handing round the classroom or for use with an epidiascope are also available.

### BIOLOGY

Charts, pictures, books, microscope slides and postcards illustrate all kinds of animal life. Bird song and animal language are demonstrated by gramophone records.

### GEOGRAPHY

Photographs of the British Isles and other countries show typical products and scenery.

### HISTORY

Charts, photographs and books illustrate the various aspects of history from the Stone Age onwards.

### POSTERS

A collection of British and foreign posters are mounted on linen with oak rollers.

### LANTERN SLIDES

A separate catalogue can be supplied on application, price 1/-.

### FILM STRIPS

A collection of film strips on many subjects is being built up and a film strip projector will also be available for loan to schools.

## ACTIVITIES

### TALKS

Parties of school children visit the Museum for talks on the collections, the subjects being arranged in consultation with the teachers. A lecture room with lantern and epidiascope is available and children are frequently allowed to handle specimens. These facilities are made use of extensively, particularly by classes of blind or otherwise retarded children.

### EXCURSIONS

Arrangements are made for parties of school children to visit the branch Museums in addition to the main building in New Walk.

At the Roman Forum, the remains of the basilica, baths and tessellated pavements can be seen. The Guildhall is an interesting example of a building of the late 14th century. Belgrave Hall is furnished as a period Museum. It was built between 1709 and 1713 and has an attractive formal garden. The Newarke Houses Museum is a 17th century building showing furniture and pictures of that period and domestic articles and agricultural implements of bygone days. It also contains relics of local people of importance.

Parties are taken to visit other buildings of historical interest in the town by special arrangement.

### CLUBS

Every Saturday morning, children's clubs meet at the Museum. These clubs are purely voluntary and recreational and comprise three sections; Art, Drama and Biology. The members have drawn up their own list of rules and they paint, make toys or puppets or organise competitions in connection with the specimens on show in the Museum. Membership is limited owing to the problem of accommodation. Intending members, who should be eight years old or over, should apply to Miss Pickles, Schools Service Department, Museum and Art Gallery, New Walk, Leicester.





**LEICESTER MUSEUM  
AND THE SCHOOLS**

**ADDRESS ALL ENQUIRIES TO  
ORGANISER FOR SCHOOL SERVICE  
59 PRINCESS ROAD, LEICESTER**