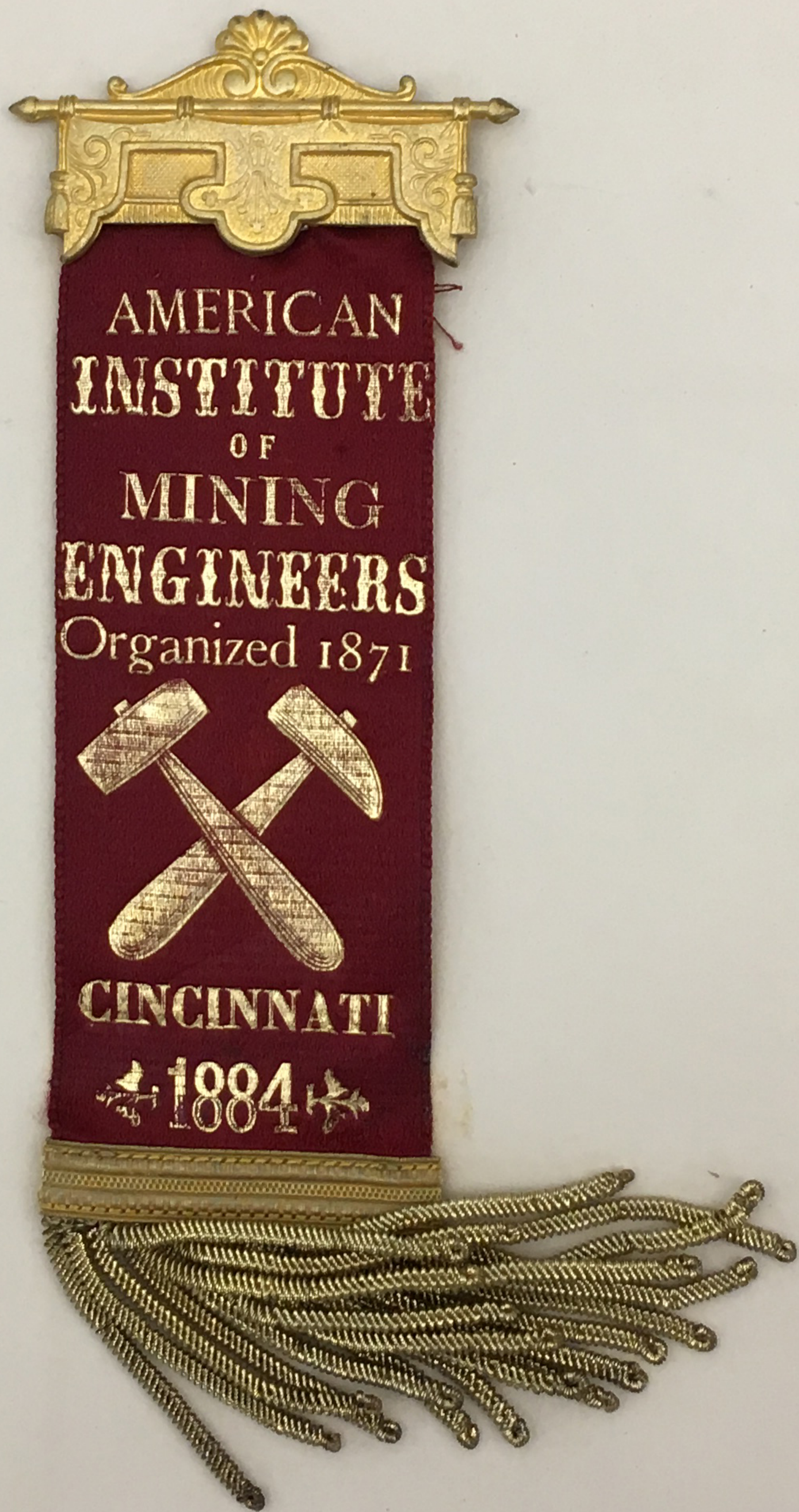


ALBUM



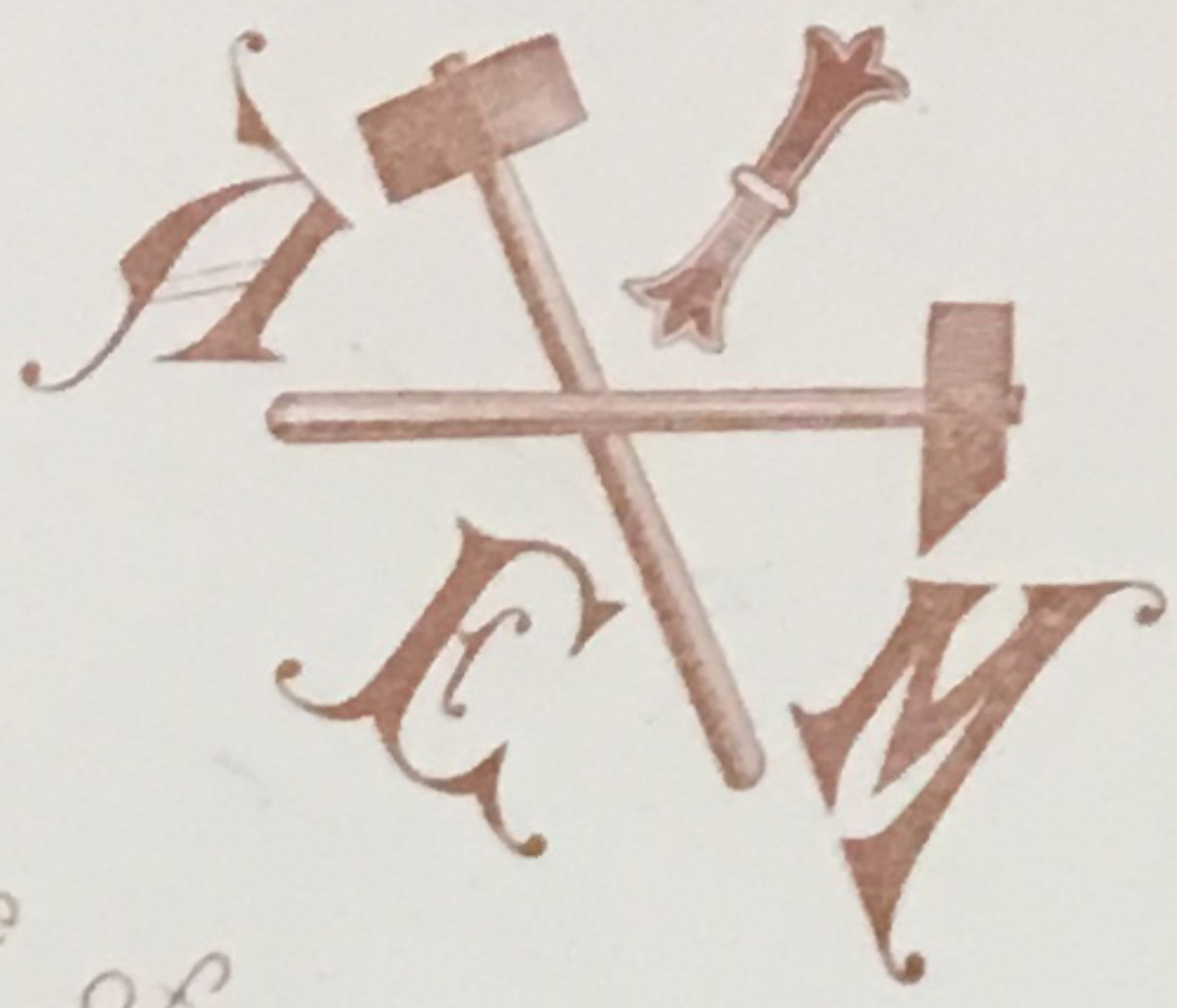


AMERICAN  
INSTITUTE  
OF  
MINING  
ENGINEERS  
Organized 1871



CINCINNATI  
1884





Programme of the Excursion  
OF THE

American Institute  
OF

\* MINING ENGINEERS, \*

To La Salle and Peru, Ills.,  
MAY 29TH, 1884.





—EVENING.—

MEETING OF THE—

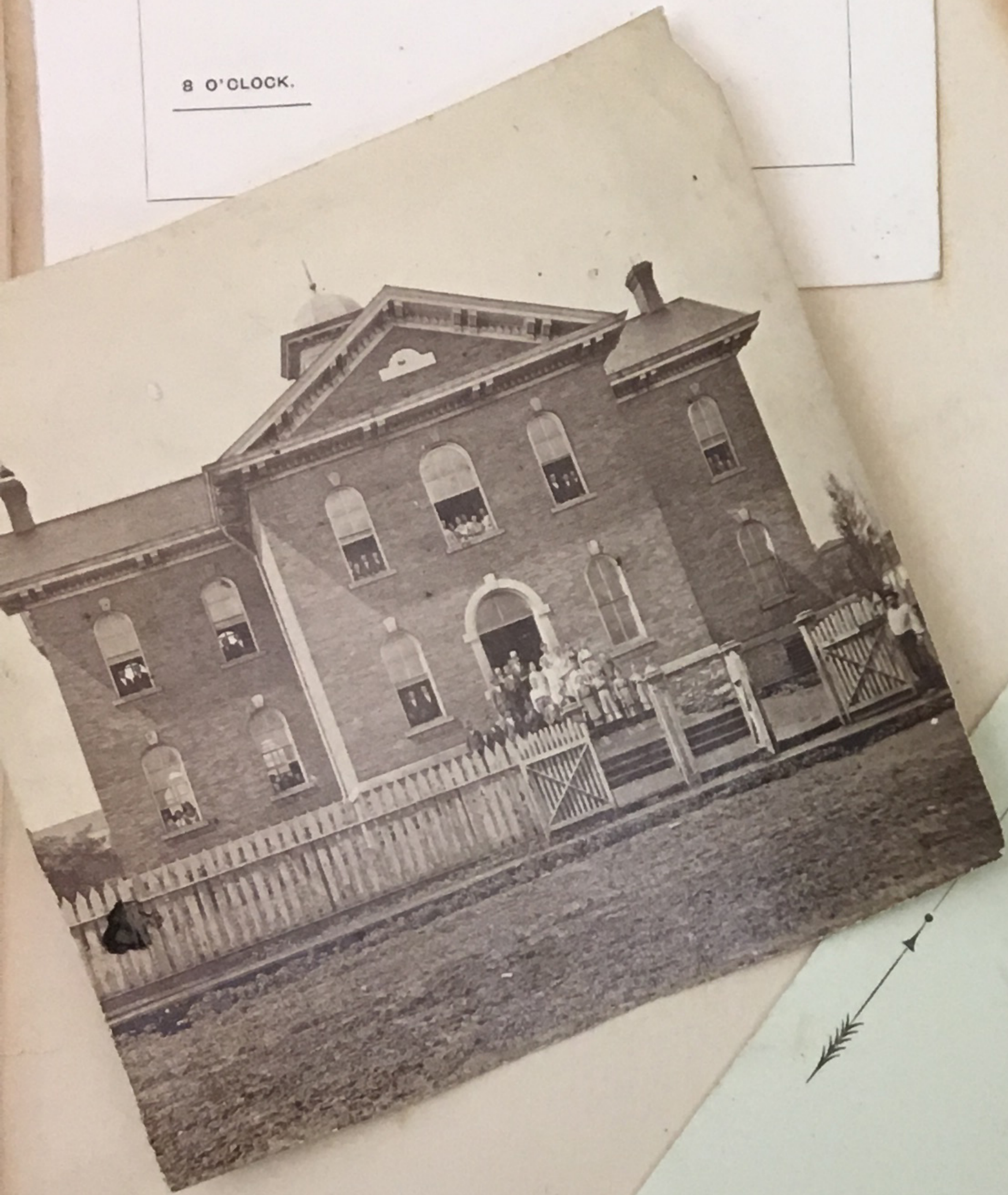
AMERICAN INSTITUTE OF

*Mining Engineers,*

—AT THE—

OPERA HOUSE.

8 O'CLOCK.



AMERICAN INSTITUTE  
 of  
*Mining Engineers,*  
 COLORADO MEETING, 1882.  
 VISIT TO  
**GOLDEN,**  
 TUESDAY AFTERNOON,  
 AUGUST 29.

COLORADO  
 State School of Mines,  
 LOCATED AT  
 GOLDEN.

*FINE*  
 1882.  
 LEADVILLE.  
 Maxima, Maxima  
 Vigore.



OF

AMERICAN INSTITUTE OF MINING ENGINEERS

COLORADO MEETING,

1882

Excursion From

GEORGETOWN.

2nd.



PROGRAMME FOR THE ENTERTAINMENT OF

—The American Institute of—

**Mining Engineers,**

ON THEIR VISIT TO

GILPIN COUNTY, COLORADO,

August 21, 1882.

AMERICAN INSTITUTE OF MINING ENGINEERS

COLORADO MEETING

AUGUST 20 1882

COMMITTEE & ARRANGEMENTS

RICHARD PEARCE, Chairman.

A. EILERS,

G. W. YOUNG,

W. S. CHEESMAN,

S. F. EMMONS,

H. R. WOLCOTT,

STON AND COLORADO

Smelting & Company.

WORKS AT ARGO, COLORADO,

(NEAR DENVER.)

Countersigned:

*Richard Pearce*

No. 66. *Richard Pearce* CHAIRMAN.

That *Miss M.* is a member of the American Mining Engineers' Excursion Party, and the courtesies extended in Colorado to



31478

This Certifies

That Miss. M. Seeger  
is a member of the American Institute of Mining  
Engineers' Excursion Party, and is entitled to  
the courtesies extended in Colorado to them.

No. 66. Richard Pease

CHAIRMAN.

Countersigned:

Wm. H. Pease  
Secretary