

Published by Roberts Drug Co.

North Entrance to Pine Grove Cemetery, Farmington, N. H.

IN
REMEMBERANCE

PINE GROVE CEMETERY

FARMINGTON CEMETERY
ASSOCIATION

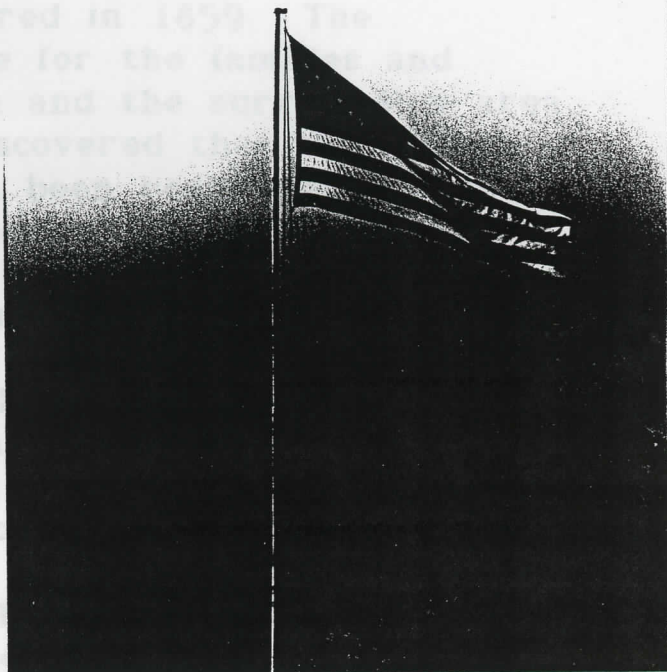
FARMINGTON, N.H.
JANUARY 1990
REPORTED BY:
Elfreda C. Otis

FARMINGTON CEMETERY ASSOCIATION was incorporated in the year 1859. The notice was published in the town paper. That was what was required in 1859. The organization entered into existence for the interest and friends in the town of Farmington and the surrounding area.

However, in 1953 it was discovered that the recording of this fact had not been done in the State capital. This came about because the Trustees were involved in selling a State highway. Therefore, the records that day were completed and the FARMINGTON CEMETERY ASSOCIATION was re-incorporated in the places of record, and continued on.

Early on in the organization officers were made. President - J. B. F. Perkins. As secretary, B. F. Perkins. Cemetery records at his place of business. In 1912, all the Cemetery records were burned. The early trustees then set about getting things back in order.

It should be noted that these men served as early trustees of the organization. George Wood, Samuel Amazeen, Charles Berry, John Otis, Charles Scruton. These men "took care" of the area. Family members were responsible for the



It is interesting to note that *Dedication:* was served as the Association grave digger at this time. His pay was four dollars. *To the TRUSTEES of Farmington Cemetery Association.* In 1859 *Fifty years have brought many changes!* to be used as a receiving tomb, especially during the winter months. Ten *May the days ahead find men and women, dedicated to the task of keeping and promoting "A place of remembrance" for the people of Farmington.* It was soon evident that property needed to be obtained for this cemetery beyond *Elfreda C. Otis* initial land.

Main Street. His farmhouse was on the east side and on the west side there was an orchard, a stretch of old rocky pasture land, and a pine, maple tree area that was called "Ham's Woods". It was in this area that the oldest graveyard in Farmington was located. It was just a small area that

FARMINGTON CEMETERY ASSOCIATION was incorporated in the year 1859. The notice was published in the town paper. That was what was required in 1859. The organization entered into existence for the families and friends in the town of Farmington and the surrounding area.

However, in 1953 it was discovered that the details of the recording of this fact had not been registered at the State capitol. This came about because the Association Trustees were involved in selling land for the construction of a State highway. Therefore, the necessary requirements for that day were completed and the FARMINGTON CEMETERY ASSOCIATION was re-incorporated, recorded at the proper places of record, and continued on in business!

Early on in the organization's history, the first elected officers were made. President- John Tuttle, and Secretary - B. F. Perkins. As secretary, B. F. Perkins kept all the Cemetery records at his place of business. When this business burned, about 1912, all the Cemetery records were destroyed. The early trustees then set about getting things back in order.

It should be noted that these men served as early trustees of the organization. George Wood, Samuel Amazeen, Charles Berry, John Otis, Charles Scruton. These men "took care" of the area. Family members were responsible for the mowing of the plots in the summer time.

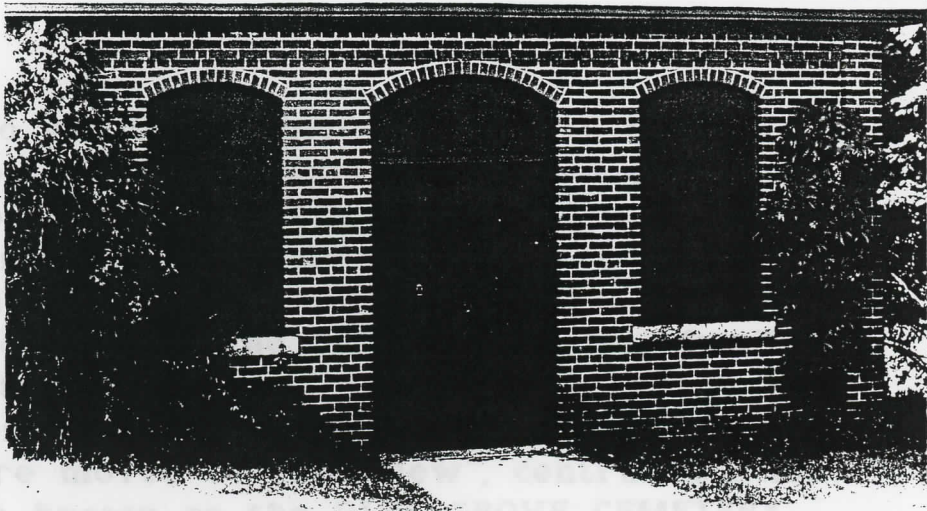
It is interesting to note that Nelson Hartford served as the Association grave digger at this time. His pay was four dollars for each grave that was opened.

In 1860 it was recognized that a place was needed to be used as a receiving tomb, especially during the winter months. Ten local men contributed \$50 each to have this building constructed. It is known today as "The Tomb" and it is located at the entrance of the Cemetery.

It was soon evident that property needed to be obtained for this cemetery beyond what was the initial land.

Earlier Benjamin Ham had owned a farm on both sides of Main Street. His farmhouse was on the east side and on the west side there was an orchard, a stretch of old rocky pasture land, and a pine, maple tree area that was called "Ham's Woods". It was in this area that the oldest graveyard in Farmington was located. It was just a small area that

was not fenced in. Through an old pair of rough pasture land by several of the Far village people were in Families from plots right on their the area of the present these other areas were The "new site" became known as the

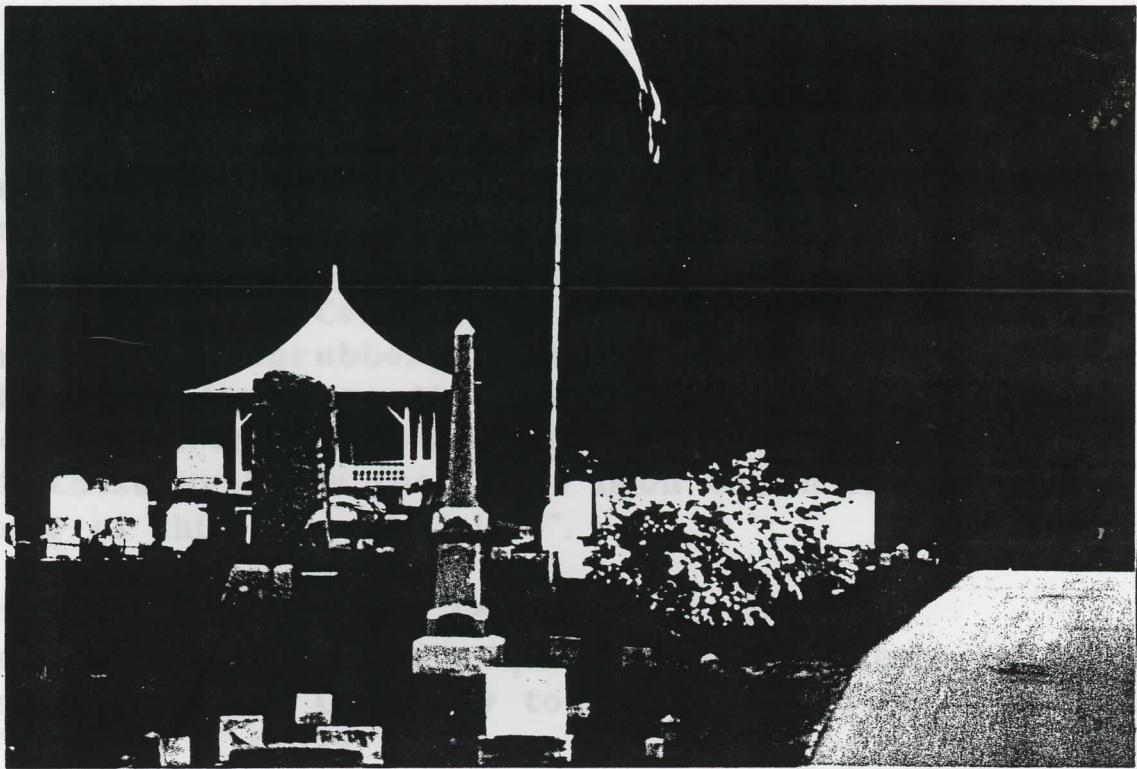


THE TOMB

Often people ask about this name. Before 1946 the upper section of the cemetery held a majestic grove of red and white pine trees. During the hurricane of 1946 most of this pine grove came crashing down. This section is referred to as Section 12 today. The Association chose Pine Grove, to highlight this grove of trees. One can glimpse of those majestic pines as one walks through the upper section. "Gator Pond"

THE GAZEBO

This property was purchased from Mr. Amazeo. The farmhouse was chosen and developed. The trees were transplanted and continuing to have held a the landscape. The Society is overseeing the Trustee's remembrance.



Each year hundreds of friends, family members, and acquaintances return to wander through the lanes, roads, gardens, and plots to reflect upon people from the past, and enjoy the scenery of the hills at the horizon. No one should miss the autumn colors of these hills.

was not fenced in. To get to the plot one had to walk through an old pair of bars from Main street and go over a rough pasture land to the area that was used as a graveyard by several of the Farmington families. Many of the early village people were laid - to - rest in this early area.

Families from outside of the village often had family plots right on their farms. Eventually, families began to use the area of the present site and many family members from these other areas were moved to this "new", central location. The "new site" became known as the PINE GROVE CEMETERY.

Often people ask about this name. Before 1946 the upper section of the Cemetery held a majestic grove of red and white pine trees. During the hurricane of 1946 most of this pine grove came crashing down! This section is referred to as Section 12 today. The Association choose the name: Pine Grove, to highlight this grove of trees. One can still catch a glimpse of those majestic pines as one walks through the "upper sections" of the Cemetery. Along the side facing the "Gator Ponds" one can still see a few of those tall pines.

This present site of the Pine Grove Cemetery was purchased from one of the original Trustees: Samuel Amazeen. Mr. Amazeen owned a large farm on present Route 11. The farmhouse was located here. Land on the back of the farm was chosen to extend the Cemetery. As the new site was developed much of the shrubbery from the Amazeen farm was transplanted to help landscape the Cemetery. This initiated the continuing focus that the Trustees and the Superintendents have held all these years as they have been concerned about the landscaping of this "pleasant place".

The Superintendent of the Cemetery has been an overseeing and working position, requiring much planning with the Trustees to cause the Cemetery to be the "place of remembrance" that it is today.

Each year hundreds of friends, family members, and acquaintances return to wander through the lanes, roads, gardens, and plots to reflect upon people from the past, and enjoy the scenery of the hills at the horizon. No one should miss the autumn colors of these hills.

Recognition must be given here to the Superintendents and the Trustees for their foresight, vision, and continuous involvement in the Association's progress over these years.

Landscaping has been a constant priority as the gardens, shrubs, and trees have been planted, pruned, cultivated and nourished. Flower gardens are a surprise and delight each year.

Plots of land have been added to the original site. These areas have been diligently developed for the benefit of the people of this Association through the years. The most recent development is the plot known as the "Hattie and Ralph White Place". This strip of land has greatly enlarged and extended the Cemetery.

The most used entrance continues to be located on Canal Street, just off South Main Street. Another entrance comes directly off South Main Street and serves to provide a convenient loop for the winter months when travel to the upper part of the Cemetery is not reliable.

Originally the roads, or lanes as they were called, between the various sections of the Cemetery and between the lots were made of grass or gravel cover. Today, the Association Trustees have paved all the major section roadways. This is a major contribution for all of us and reveals the awareness and concern of those men and women who are responsible.

"The Office", as many folks call it, has set up on the hill where the pine grove used to be! It continues to be a contact place during the summer days. Recently, however, it was recognized that "the office" needed to be more accessible year-round. Therefore, "the office" has been relocated with the availability of the building originally the site of the monument works of Bert W. Baston. This building is located at the Canal Street entrance. A memorial fund, The Baston Memorial, has made it possible to develop this area. With the ever increasing business that is carried on in the office of the Association there will be room and facilities available. The Board of Officers and Trustees of the Association have been

meeting here regularly
out of this place. We
needed. In addition,
Garage located mid-way
on Little Gator Pond.

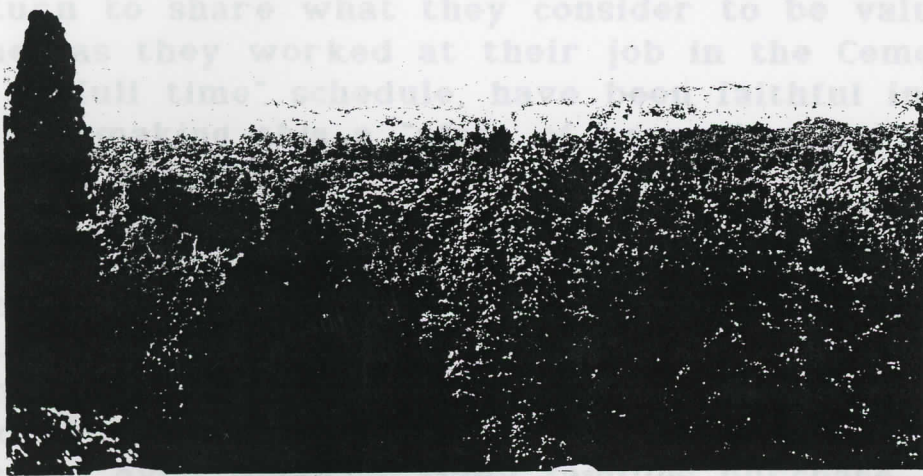
A rehearsal of
complete if one forgot
and young ladies who
high and high school
college students have

them during the spring, summer and fall days. Many
return to share what they consider to be valuable learning
time as they worked at their job in the cemetery. Others
on all time schedules have been given the task of
ind to Our "The
to

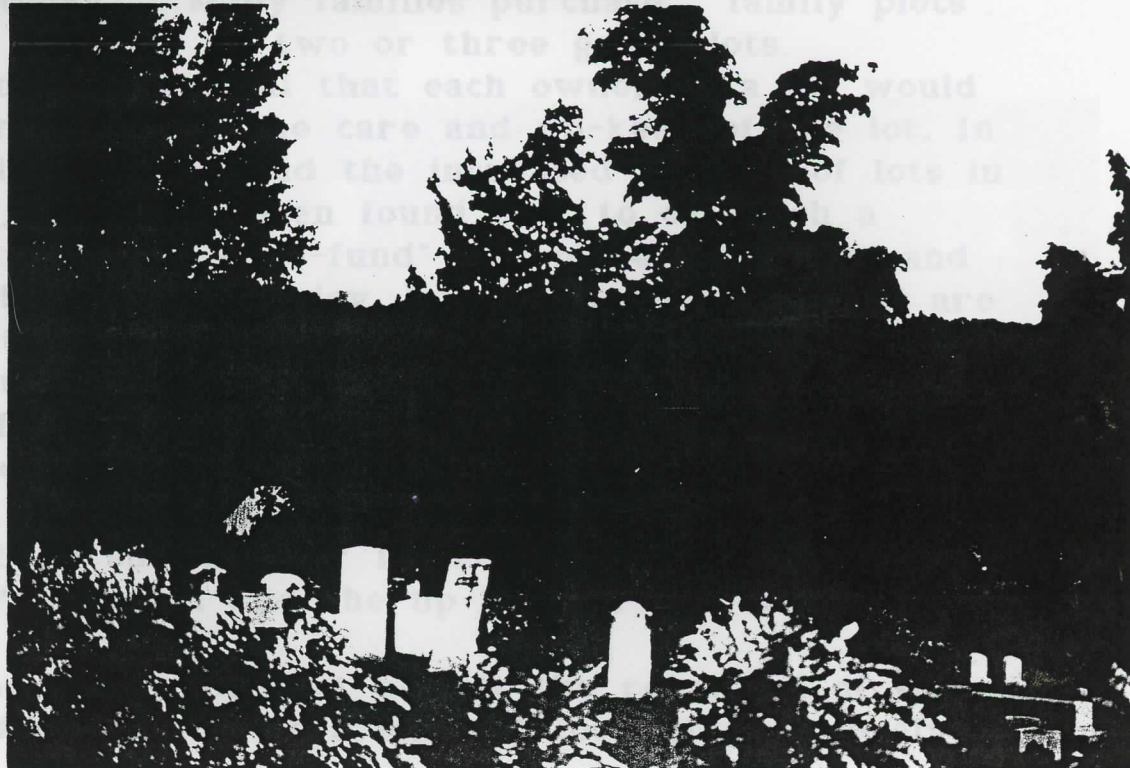
Others invest
Early on
receive a year
the busy work
this Cemetery
more dependant
placed under
be carried out
M

families thus
in the future
families who
work of the

Time and
bit-by-bit



THE LANDSCAPING



meeting here regularly. The Superintendent will be working out of this place. Workers will still use both locations as needed. In addition, the Association has provided a Central Garage located mid-way of the Cemetery, near the pump-house on Little Gator Pond.

A rehearsal of the Pine Grove Cemetery would not be complete if one forgot to mention the men, women, young men and young ladies who have "worked" at the Cemetery! Junior high and high school students, as well as "vacation-time" college students have looked forward to the "job" available to them during the spring, summer and fall days. Many, many return to share what they consider to be valuable "learning time" as they worked at their job in the Cemetery. Others, on a "full time" schedule, have been faithful in the task of indeed making this a "place of remembrance". Our "thanks" to each one!

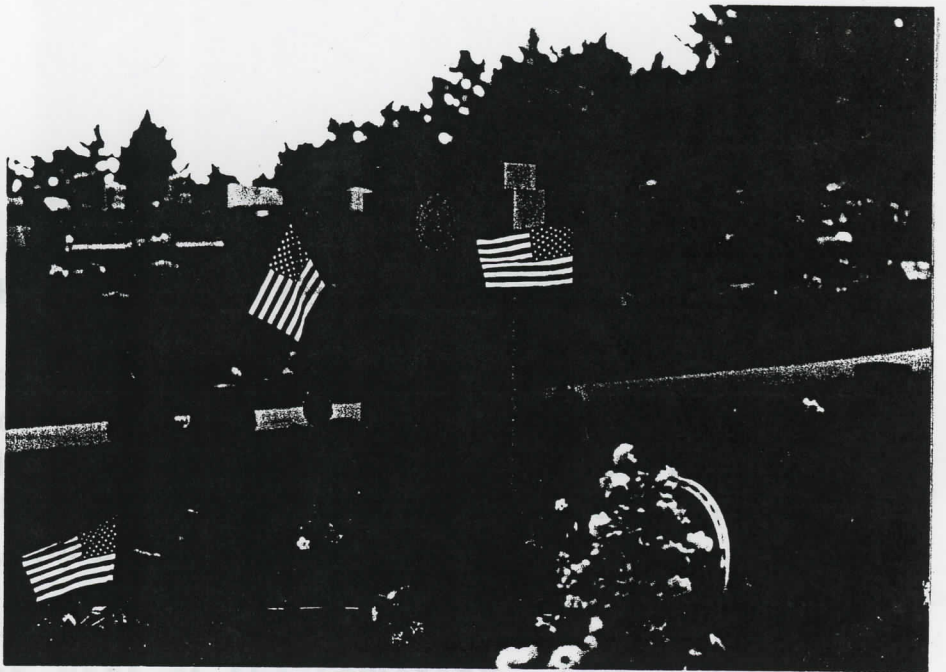
Custom has been honored at PINE GROVE CEMETERY. Often families have followed the pattern set up by four families from the early days. In order to have families near each other, the families of W. Roberts, Ichabod Berry, John Ham, and O.E. Jones purchased lots near each other. You will find this grouping in Section 4. Other families continue this custom, even today. Many families purchase "family plots". Others invest in single or two or three grave lots.

Early on it was usual that each owner of a lot would receive a yearly bill for the care and up-keep of the lot. In the busy world of today and the increased number of lots in this Cemetery, it has been found that to establish a "perpetual care-fund" was more acceptable and more dependable. Thus, today, lots are invested in and are placed under the care of this fund enabling the daily work to be carried out and care to be planned for the Cemetery.

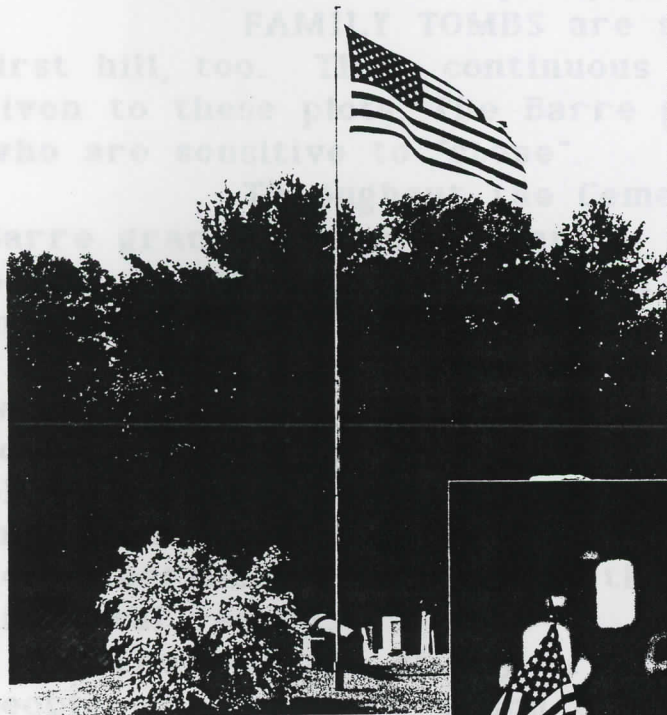
Memorial investments have also been made by families thus enabling much work to be carried out now and in the future. Expression of thanks must go to the many families who have shown their interest and concern in the work of the Association and the up-keep of the Cemetery.

Time and space does not permit the rehearsal of the bit-by-bit development, at a minimal cost, of such lovely

areas as the:
 AMERICAN
 by a background of sp
 CIVIL WAR
 VETERANS
 the center of a park
 The distin
 in memory of distingui
 people of Farmington:
 Huckins, Robert Ricker
 others.



THE SQUA
 you move to the "upper part of the cemetery" this is a well
 photographed spot. At Memorial Day one can see several
 citizens of our Community enjoying the advantage of this point!
 FAMILY TOMBS are standing at the top of the
 first hill, too. The continuous green mounds reflect the care
 given to these people. Barre granite is used for the
 who are so costly.



*THE AMERICAN LEGION
 LOTS*

and then are diligent
 before them.
 MAY THIS REMEM
 encourage those who
 place of remembrance
 walkers, and joggers



areas as the:

AMERICAN LEGION MEMORIAL section surrounded by a background of spirea,
CIVIL WAR MEMORIAL area overlooking the hills,
VETERANS OF WORLD WARS MEMORIAL which is the center of a park area,

The distinctive VERMONT GRANITE BENCHES given in memory of distinguished persons who have served the people of Farmington: Dr. McLaughlin, Norman L. Otis, Walter Huckins, Robert Ricker, John Lawrence Jr., Robert Hoage and others.

THE SQUARE GAZEBO sits at the top of the hill as you move to the "upper part of the Cemetery". This is a well photographed spot. At Memorial Day one can see several citizens of our Community enjoying the advantage of this point!

FAMILY TOMBS are standing at the top of the first hill, too. Their continuous green mounds reflect the care given to these plots. The Barre granite stands out to those who are sensitive to "stone".

Throughout the Cemetery wonderful pieces of Barre granite, Vermont marble, and Concord granite stand for people to study the variety and design of monuments and markers. Indeed one can understand the phrase "rock of ages".

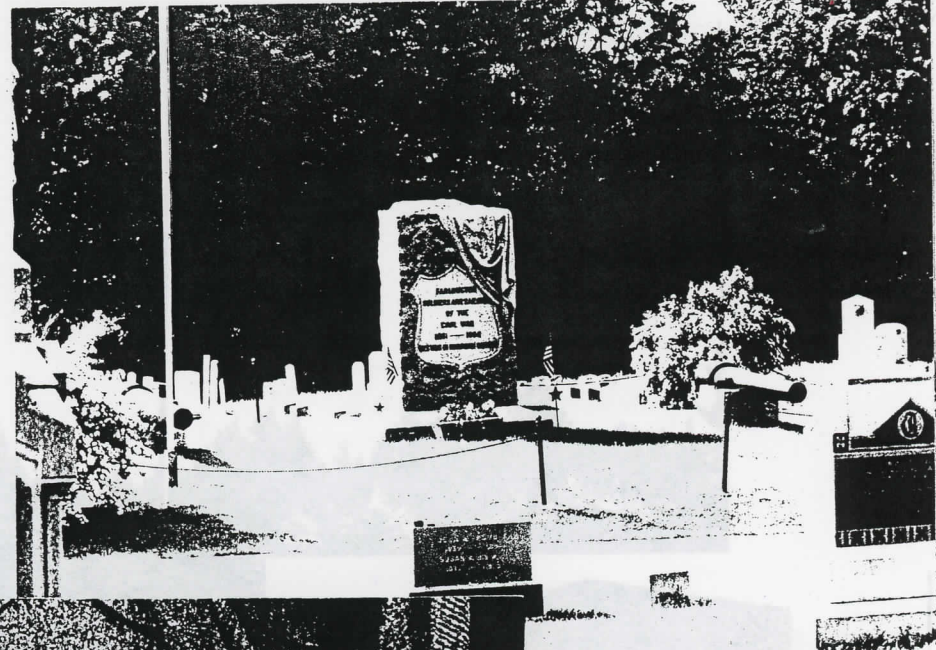
It would be difficult to estimate the number of people who come to the PINE GROVE CEMETERY each summer and fall to look up and trace back family members. Often photographers will be seen as they capture a record of the monuments and markers that have been set out in remembrance. For many, the Cemetery is a source for historical record.

The heritage of any organization is dependent upon the people who "see" the vision of its contribution to a Community and then are diligent in carrying out the task that is set before them.

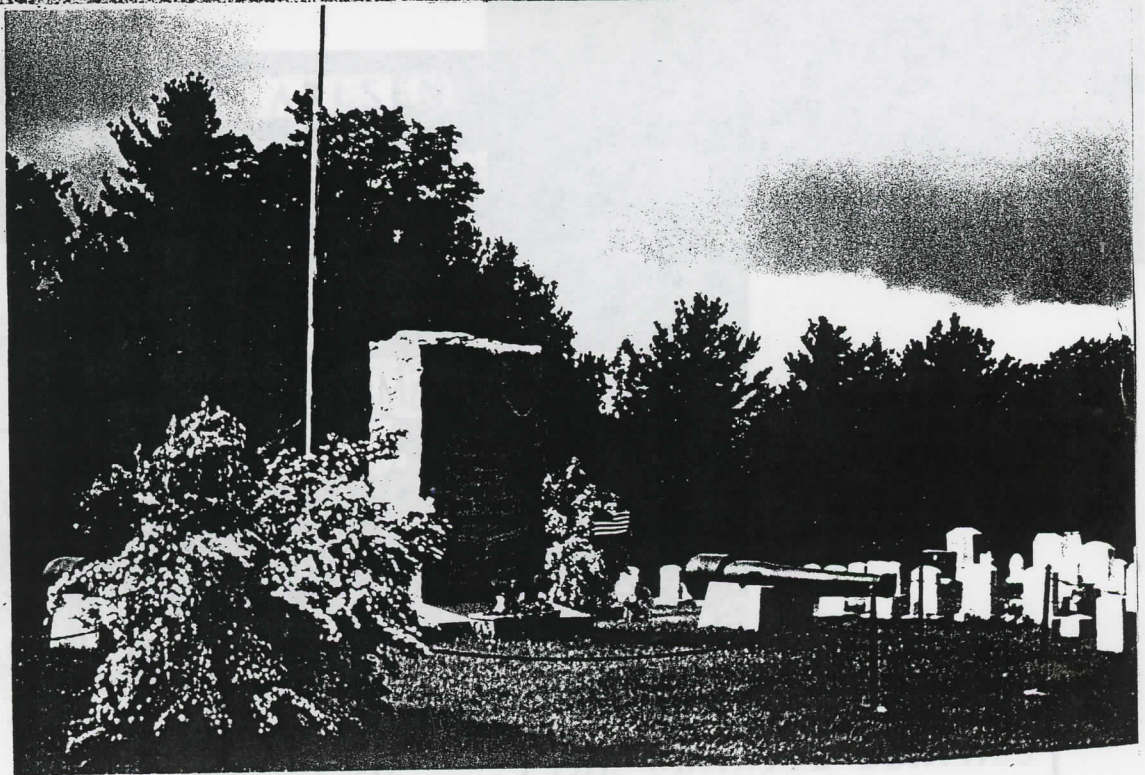
MAY THIS REMEMBRANCE contribute to the vision and encourage those who will pick up the task of providing a place of remembrance for the families, friends, acquaintances, walkers, and joggers of FARMINGTON and the surrounding area.

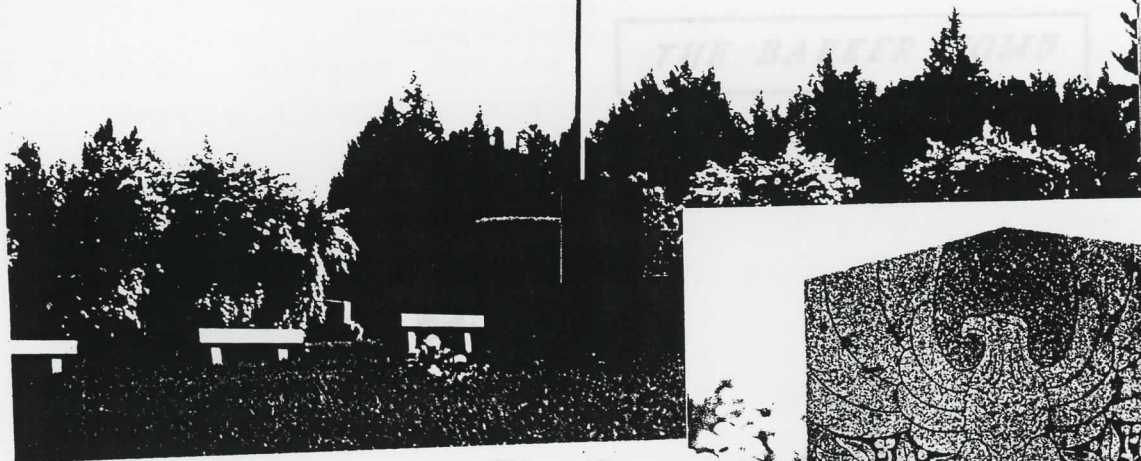
Elfreda C. Otis
Almira M. Baston

GRAND ARMY
MEMORIAL

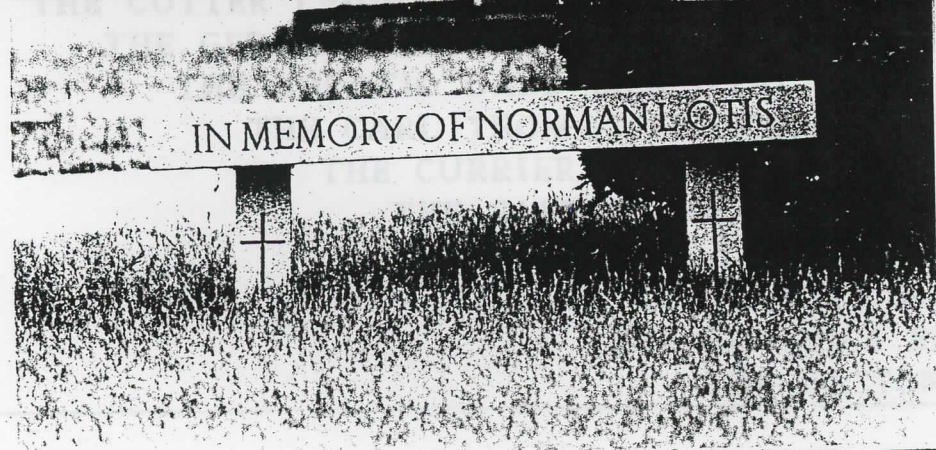
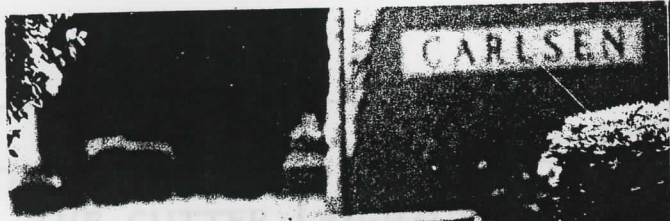


THE CIVIL WAR
MEMORIAL





THE WAR MEMORIAL



MEMORIAL
MEMORIAL
LISON MEMORIAL
MEMORIAL

THE GRANITE BENCHES

SOME OF THE OFFICERS AND TRUSTEES
OF FARMINGTON CEMETERY ASSOCIATION

PRESIDENTS

John Tuttle, Allison Tuttle,
Roscoe Chamberlain,

THE BARKER TOMB

TREASURERS

Cora Flanders, Ella Chandler, Winifred Colby,
Mary Davis, Beatrice Morris Fish, Ann Place

SECRETARIES

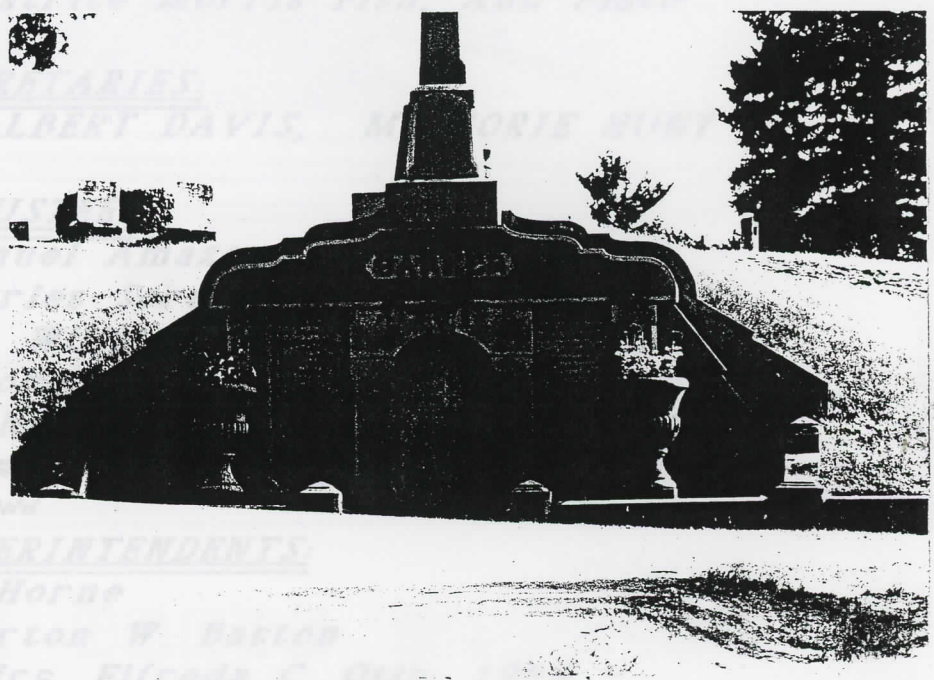
H.F. PERKINS, ALBERT DAVIS, MORIE HUNT

TRUSTEES

George Wood, Samuel Hunt,
John Otis, Charles Hunt,
John Lawrence,
Edward Mrs. Hunt,
Ernest Kelly, Harry
Walter Lafavour, Ronald
Glidden

SUPERINTENDENTS

Mr. Clarence Horne
Mr. Burton W. Baston
Mrs. Elfreda C. Olin



PERPETUAL CARE MEMORIALS

- THE LORD MEMORIAL
- THE CUTTER LEIGHTON MEMORIAL
- THE GERRISH MEMORIAL
- THE HORATIO BABB MEMORIAL
- THE CARL THOMAS MEMORIAL
- THE CURRIER MEMORIAL
- THE SAFFORD MEMORIAL
- THE LESLIE TWOMBLY MEMORIAL
- THE LEON HAYES MEMORIAL
- THE BEATRICE ELLISON MEMORIAL
- THE BASTON MEMORIAL

SOME OF THE OFFICERS AND TRUSTEES
OF FARMINGTON CEMETERY ASSOCIATION

PRESIDENTS:

John Tuttle, Allison Tuttle, Ned Parker, Frank Lord,
Roscoe Chamberlain, Roger Nutter

TREASURERS:

Cora Flanders, Ella Chandler, Winifred Collay,
Mary Davis, Beatrice Morris Fish, Ann Place

SECRETARIES:

B.F. PERKINS, ALBERT DAVIS, MARJORIE HUNT

TRUSTEES:

George Wood, Samuel Amazeen, Charles Berry,
John Otis, Charles Scruton, Burton Baston,
John Lawrence, William Lord, Frank Lord,
Edward Mros, Norman L. Otis, Fred Brown,
Ernest Kelly, Harry Nute, Roger Nutter, Myron Furber,
Walter LeFavour, ~~Ronald~~ Chagnon, John Silvia, Malcolm
Glidden. Roland

SUPERINTENDENTS:

Mr. Clarence Horne

Mr. Burton W. Baston

Mrs. Elfreda C. Otis: 1940 -

PRESENT OFFICERS AND TRUSTEES: 1989 - 1991

President: Roger Nutter

Treasurer: Beatrice Fish & Ann Place

Secretary: Marjorie Hunt

Trustees:

Ronald Chagnon, Myron Furber, Malcolm Glidden,
Walter LeFavour, Frank Lord, John Silvia

Superintendent: Mrs. Elfreda Otis.