

APRIL 1991

Sun.	Mon.	Tues.	Wed.	Thurs.	Fri.	Sat.
	1	2	3	4	5	6
7	8	9	10	11	12	13
14	15	16	17	18	19	20
21 Athletic Banquet	22 Recognition Day 1 p.m. C. Walsh Theater	23 Last Day of Classes Baseball @ RIC 3:30 p.m. Softball @ USCG 4:00 p.m.	24 Reading Period Athletic Dept. New Recruits 6:30 p.m. Sawyer Cafe	25 Reading Period Women's Program Center Spring Dinner 6-9:00 p.m. Sawyer Cafe	26 Softball @ FAVOR 1:00 p.m. Tennis at Salve 1:00 p.m.	27
28 Softball @ Emmanuel 1:00 p.m.	EXAMS	EXAMS	30 Final Exams!!! Aaaaaaaarrrrrrggggghhhhh!!!!			

MAY 1991

Sun.	Mon.	Tues.	Wed.	Thurs.	Fri.	Sat.
			EXAMS 1	EXAMS 2	EXAMS 3	4
5 Softball Sunday Cheering Club 1 p.m. M.I.T. field	6 Leadership Banquet 6 p.m. C. Walsh Theater	7 PC Red Sox	8 Allison International Lecture Meridian Hotel 11:30-2 p.m. \$30 (includes lunch)	9 Commencement Ball Lafayette	10	11
12 Registration for Summer Session I	13	14	15	16 Recognition Night New England Aquarium 6pm	17	18
19 Summer Session I Day Classes Begin	20	21	22	23	24	25
26 COMMENCEMENT DAY	27	28	29	30	31	

Welcome to Suffolk University

Orientation Issue

The Suffolk Journal

June 1991

*Extra

Welcome to Suffolk!

Hi everyone! Welcome to Suffolk University!! I know it's hard to think as far ahead as September right now, but I would like to tell you about a "Welcome Week" that is in the planning stages. "Welcome Week" will be a two-week series of events, both social and informative, designed to help you become acquainted with the university's services, clubs, and organizations and help you adjust to Suffolk. Events will include activities fairs, rathskellers (Friday afternoon parties), campus tours, special speakers and much more. Watch for signs and schedules of these events. Have a great summer!

C. Daniels

Using Suffolk's resources

by Ron Vining and Scott Moser

For incoming students, Suffolk offers a wide variety of resources to aid in the transition to university life and offer continuing support to students throughout the year.

FINANCIAL AID

One of these is the Financial Aid Office on the eighth floor of the Sawyer building. There are people available to offer assistance to students who need Financial Aid Services. All the forms for the different kinds of Financial Aid can be picked up there and appointments can be made whenever necessary.

CAREER SERVICES

Career Services is another resource which Suffolk offers to students. This is the main resource for job advice and job searching. Students can find part-time/full-time job offers, internships, and Cooperative Education opportunities. Career Services can be used for students who are thinking ahead and are anxious to gain experience related to his or her major field of study. The work study program is another program that can help students financially. Students can work in the Student Activities Office, Financial Aid Office, Registrar's Office, and many more departments.

COMPUTERS

As students you will be using computers throughout your college career. Computers can be found in the Fenton Building on the first floor, in the Sawyer Building on the fifth floor and in the Sawyer Library. Personnel are available to students who have any problems or questions concerning the computers.

GETTING ACQUAINTED

Having fun and meeting new people is an integral part of your education at Suffolk University. One place to enjoy yourself is the Student Lounge in the Fenton Building. You can play ping-pong, foosball, video games and also meet new friends.

The gymnasium is another site for students who like to play basketball, weight train and participate in aerobics.

The cafeteria is also a place to sit down and relax with friends and enjoy a good meal.

Make it a habit to get involved with student activities and take advantage of all of our worthwhile resources. You will gain a positive Suffolk experience if you do.

Suffolk's ABC's: the "Lingo"

by Christina Daniels

Welcome to Suffolk University! This is your first assignment: memorize this "lingo" that can be heard throughout campus. The first test: the first day of class you can get an "A" by showing off your knowledge of the "Suffolk lingo" to the upperclassmen.

1) **Add/Drop:** This is a form used by students to add and/or drop classes at the beginning of a new semester. Classes must be added and/or dropped within two weeks of the beginning of the semester in order to avoid complications. These forms can be picked up at the Registrar's office on the 7th floor of the Sawyer Building.

2) **APQ (Alpha Phi Omega):** A co-ed fraternity that does a lot of community service in the area, including assisting with the annual blood drive.

3) **Archer:** One of Suffolk's original buildings located on the corner of Derne and Temple Streets (opposite Derne Street — see entry). Home to CLAS deans' offices, the Math Department and the Science Department (Biology, Chemistry, Physics).

4) **Beacon:** This is Suffolk's yearbook.

Suffolk ABC's
continued on pg. 6

Getting Involved

Clubs and Organizations

Program Council

What is Program Council? P.C. is a group of 9 energetic, dedicated members working together to plan, organize and execute social events for Suffolk students.

Chairs on Program Council:

Rathskellar Chairperson
Publicity Chairperson
Performing Arts &
Lectures Chairperson
Special Events Chairperson
Social Chairperson

Executive Board Positions:

President
Vice President
Secretary
Treasurer

Committees:

Rathskellar Committee: Any student may be part of the Rat Committee. Rats are theme parties in the Sawyer Cafe that take place on selected Friday afternoons. Responsibilities include: Attend Rat at 2:00 to set up, and help in some fashion during the event, i.e. sell tickets etc. Last years Rat Committee had a great time helping with this event so all are encouraged to join.

Social Committee: The Social Committee members assist in the planning of off-campus events such as the Holiday Party and Spring Party. These events are always popular and energetic students are needed to submit their ideas and time the evening of the event.

Publicity Committee: A member of the Publicity Committee would assist the chairperson in creating publicity, i.e. flyers, posters etc. and distributing these around campus. Put your talent to the test!

Special Events Committee: This committee plans the annual Tree lighting ceremony in December. Red Sox games and other events for the Suffolk Community.

Performing Arts & Lectures Chair: This Chair plans guest speakers for the Suffolk Community. If you have any topics you would like to see covered at the University contact x8320.

Family Brunch Committee: Members of this committee can submit ideas for our annual family brunch. The premise behind the brunch is to bring parents, students and faculty together in a relaxed setting in order to get to know one another better. All students are welcomed to be a part of the planning of this event.

Commencement Ball Committee: This year the Commencement Ball will take place on Friday, May 10th. The committee members give the chairperson input and ideas as to what type of food, entertainment and decorations should be chosen. This event is open to all classes (freshmen, sophomores, juniors) but it is a celebration for the graduating Seniors. A formal attire is requested and sit down dinner will take place. Help this years Commencement Ball the best ever!!

BEACON YEARBOOK

Suffolk University's Beacon Yearbook is published annually for fall distribution. The Beacon is designed with the entire undergraduate student body in mind, with an emphasis on the graduating class. Students with an interest in any aspect of yearbook production are encouraged to stop by Room 116 in the Student Activities Center or call 573-8328.

Accounting Club

Originally the Accounting-Finance Association, the club split into the Accounting Club and the Finance Club. The Accounting Club emphasizes the academic area of Accounting by running extracurricular programs and symposia dealing with field problems and career possibilities. Social events, often sponsored in conjunction with other clubs/organizations at Suffolk, are also provided. Membership is open to the entire Suffolk University community.

Humanities Club

The Humanities Club has been organized to stimulate and encourage a better appreciation of the arts. The club attempts to provide a well-rounded program to meet the interests of all. Programs include talks, performances, museum visits, as well as events concerning ancient cultures, modern foreign cultures, and our own American culture.

Get involved--it pays off

As a new member of the Suffolk University community, it is important that you get involved in some way in university activities. Getting involved is probably the best thing you can do for yourself in beginning your Suffolk career. Not only does it enhance your Suffolk experience and provide you with lifetime memories, it is also a wonderful way to meet people and allows you to take a break from academics and work for a while.

Getting involved is easy. Suffolk University provides its students with a wide variety of extra-curricular activities in a wide variety of interest areas. Among the clubs and organizations you can get involved in are: The Suffolk Journal, Beacon Yearbook, Venture Literary Magazine, WSFR (radio), WSUB (television), Phi Sigma Sigma, Tau Kappa Epsilon, Student Government Association (SGA), Program Council (PGC), Asian American Association, Black Student Union, Archery, Fellowship Activities Club, Students Organized Against Racism (S.O.A.R.), the Ballotti Learning Center and much, much more. In addition, you may join an aerobics class or work out in the new weight training room or join a sports team.

Whatever you decide on, you'll be glad you did join a club, organization, sports team, or what have you. You'll get the most out of your Suffolk experience if you do decide to get involved and school will no longer be just a place you go to for class.

So many students come to class and then go home, never taking advantage of all the opportunities which Suffolk offers its students. Make it different for yourself and get involved. It really pays off—take it from someone in the know.

Black Student

Union

The Suffolk Black Student Union assists Black students in adjusting to college life at Suffolk. It presents speakers and functions to promote insight into the Black students' concerns and goals in America.

The SBSU's purpose is to act as a liaison between minority students and the administration on such issues as recruitment, financial aid, and administrative decisions affecting minority students' academic needs. The Association is open to all students.

Economic Association

The Suffolk Economic Association provides a forum for the discussion of current economic conditions, and seminars for student and faculty programs. Past events have included an address by a Federal Trade Commission economist on the regulation of advertising, a description of the options market by a stock broker, discussions of career opportunities by representatives of local consulting firms, and a report on the economic interdependence and cooperative program jobs available to Suffolk students. The Association is open to all students.

HISPANIC ASSOCIATION

The Hispanic Association is an organization whose primary goal is to organize socio-cultural and intellectual events related to the Hispanic Culture for all the Suffolk community. The association also tries to link students of Hispanic origin with the many opportunities and activities offered here at Suffolk. Programs and activities include meetings, guest speakers, "Hispanic Day," "Calle 8," panels and other special events scheduled throughout the academic year.

History Society

The History Society is an organization which aims to encourage the exchange of ideas and the growth of sociability among history students, to develop activities of historical interest to the Suffolk Community and to provide a liaison between those interested in history and the History Department. Activities have included: visits to historical sites, guest speakers, seminars, films, periodical banquets, social gatherings, guest discussions, and 'golfing'.

The History Society is open to all Suffolk students.

Venture Literary Magazine

Venture is the student literary and arts magazine sponsored by the English Department and published once a year. Founded in 1967, the magazine features in each issue approximately 60 pages of poetry, short stories, articles, photography and art work contributed by members of the Suffolk community. Any student may participate in creating the magazine.

WSFR Radio WSUB Television

WSFR is a closed-circuit radio station broadcast to various locations within the university. Students plan the programming schedule and produce and broadcast live radio programming. Its music format is greatly diversified, and programming includes jazz, reggae, rock, and Boston beat. Progressive music is also in the programming schedule.

WSUB gives students interested in the electronic media the opportunity to learn technical and professional aspects of video production while giving them "hands-on" experience producing news, entertainment and sports programs. All segments are student produced and are shown in specified locations on campus.

For Info On Other Clubs and Organizations Refer To Your Student Handbook

Financial Management Association

Primarily for Finance majors, but open to all students. Students become members of the only collegiate national association for financial managers. Meetings feature speakers covering topics in finance, such as banking, financial planning, stock brokerage, financial management, insurance, and real estate. The FMA Student Chapter is always looking for new members interested in the financial area.

Getting involved in the Journal

On behalf of the editors and staff of *The Suffolk Journal*, welcome to Suffolk University! We are looking forward to having you join the Suffolk community, which, you will find, is an exciting and diverse place to pursue your college education.

We would like to tell you a little about *The Suffolk Journal*. Hopefully, you will want to join us in the fall.

The Suffolk Journal is the official student newspaper of Suffolk University. It is edited and put together entirely by students.

As the student newspaper, *The Journal* strives to be an opinion leader and sounding board for student views. Staff members gain valuable practical experience in newspaper writing, copy editing, layout and design, photography and advertising.

You shouldn't think that you have to be majoring in journalism to get involved in *The Suffolk Journal*. We strive for a variety of viewpoints gleaned from various academic disciplines. The current editors are in the process of negotiating with the Journalism Department for staff members to receive one to three credits for working on the *Journal*. Prospective staff members would register for the Journalism Practicum, indicating the number of credits they would like to earn. (Students who are not majoring in Journalism may do this too!)

The Journal is seeking your help in putting out a well-written, informative paper every week during the school year. The staff meets once every week to discuss assignments and other business. Attendance at meetings is mandatory (food and beverages will be provided).

The Journal is in the process of re-evaluating its goals and objectives. We have also begun to update the paper, adding new computers with the hope of doing in-house typesetting. This is an especially important time for the *Journal* and we are going to need all of the help we can get to ensure a quality publication.

During the upcoming year, the senior editors will be training editors to take over in the Fall of 1992. We are looking for dependable news and sports reporters, and photographers as well as department editors and a PR person. Reporters are expected to cover events assigned to them and to meet deadlines on time. They are also encouraged to help during paste-up.

This year promises to be an exciting one for the *Journal*. We are all looking forward to your joining us. Our first meeting will be posted at the beginning of the semester.

Suffolk University smoking policy

The University is quickly moving towards a smoke-free campus. Like Babson and Bentley Colleges, Suffolk University will prohibit smoking throughout our facilities beginning July 1, 1992. As of July 1, 1992, Suffolk University will be a smoke-free campus.

If you have any questions or comments, the schedule of the Smoking Policy and Education Committee is as follows:

October 2, 1991
December 4, 1991
February 5, 1992
April 1, 1992

All meetings are held in the Vice President's conference room at One Beacon Street on the 25th floor from 3:00 to 4:00 p.m., unless otherwise posted.

Policy Statement

Smoking is prohibited throughout Suffolk University facilities except in designated smoking areas, which are identified by "smoking permitted" signs.

Suffolk recycles

by V. Gordon Glenn, III

BOSTON—Suffolk University's Student Government Association began a campus-wide recycling program in February. The program originally began in the newly opened Ridgeway Building, and through its popularity spread to other campus buildings.

Recycling bins for aluminum cans were placed throughout the campus; student lockers, hallways, and eating areas. Paper recycling bins have been placed in all administrative offices and have been enthusiastically received. Student administrative offices at One Beacon Street have been participating in that building's program since last spring, 1990.

Where to find computers

by Karen Mungal

Computers that are available for Suffolk students:

I. In the SAWYER LIBRARY there are a few IBM PCs for all students. You must have a formatted floppy disk to work on these machines, unless you are working on the Prime or Vax. These computers are located on the 2nd floor of the library. There are usually library assistants who will be able to help with the machines.

II. 5th FLOOR—Sawyer there are many computers for SOM students. These computers contain various programming languages that are taught in many of the SOM classes. This lab is open during the week and on weekends.

III. CLAS COMPUTER LAB is located on the 2nd floor of Fenton. This lab contains IBM and Macintosh computers. Many of the IBM's use either a 5 1/4" or 3 1/2" disk, or both. The hours that this lab is open are posted on the door in the lab. The lab is also open during the weekend.

IV. There are a few computers in the BALLOTTI LEARNING CENTER in the 3rd floor. These computers are available for all students.

Most of the computers at Suffolk contain Word-Perfect 5.1. This program is very user friendly and many students use it frequently, so don't be afraid to ask for help anytime.

Suffolk organizes S.O.A.R. chapter

by Ivy Clifzari

The Society Organized Against Racism (SOAR) in New England Higher Education, Inc. was organized here at Suffolk University recently. Any student, faculty member, administrator or staff member is welcome to join the organization.

SOAR's purpose is to assist with the formation of student organizations which address issues of racism, prejudice and discrimination. The organization helps to create workshops designed to raise the conscience. Professional services are available. Inter-cultural programs are also formed to help implement diversity and pluralism within the campus communities throughout New England.

For anyone who is interested in becoming part of the organization or if there is anyone who would like more information, contact Paul Korn at the Counseling Center in the Archer Building, Room 304 (573-8227).

Slightly Off Campus...

Answers To More Questions You Never Asked

Among the conclusions reported in various academic studies around the country in recent weeks were:

- The average college student will have changed his or her major three or four times before graduation.
- College freshmen who choose to sit in the front of a classroom generally participate more, skip less and get higher grades than those who sit toward the back. Generally, the farther toward the front of class a student sits, the more self-esteem he or she has.
- Charles I. Brown, Psychology Dept. Chairman, King's College

REQUIRED READING

1992

The Suffolk Experience

To Be Gay At Suffolk

by John Cowhig

"Only a significant effort from all gays and lesbians at Suffolk can make our community a more welcoming place for homosexuals." That was how I concluded my letter to the editor of *The Suffolk Journal*, March 27, 1989.

Well, here we are, two very short years later and it must be noted that there has been a noticeable change in the climate at Suffolk. The gay community at Suffolk has come a long way, but still has a tough road ahead. The G.M.L.S. is now concluding its most successful year ever. A string of successful events, well publicized and well attended, have made this year one to remember. Events ranging from potluck dinners and panel discussions to the society's first inclusion in Cultural Unity Week, have given the G.M.L.S. the recognition it has strived for.

The G.M.L.S. Constitution is in the final stages of preparation, ready for presentation to the S.G.A. in the Fall of 1991. The G.M.L.S. is ready for official university status and recognition.

Ending the year with a bang, the G.M.L.S. and the Department of Communication and Journalism presented a photo exhibit on gay activism in Boston.

The photos that made up the exhibit were taken this spring at two separate local protests by Queer Nation and ACT UP (AIDS Coalition To Unleash Power). The first protest, at the Area A Police Station, was to call attention to "Bashers With Badges." This protest was a response to the unjust attack of a Suffolk Law student by Boston Police.

The second demonstration, at the Hynes Convention Center, was to protest the National Catholic Educators Conference. Queer Nation and ACT UP wanted to call attention to the Catholic Church policies on safe sex, safe sex education, abortion, birth control and homosexuality, in general.

As my years at Suffolk come to a close, I can recall no bad memories beyond the long walk from Ridgeway to Sawyer and Comm. Theory II.

Anonymous no more, I am, John Cowhig.

Good Bye and Good Luck.



photo by John Cowhig

Campus Ministry

Religious Diversity at Suffolk

by Marty Charry, Class of 1992
and
Wendy Sanford, Campus Minister

From January 25 to February 1, 1990, Suffolk University celebrated its first Cultural Unity Week. During that week, the Campus Ministry office had on its door a "Religious Diversity" board for students, faculty and staff members to share their cultural and religious background with others. They had a chance to express their feelings about their background and to give advice or suggestions for others who might identify with what they had to say. Following are some of the messages that people wrote on the board through the week.

Hi! I am from Columbia, South America. I belong to the Catholic religion. I feel like I'm very devoted to my religion, it's not like I want to be the next Mother Theresa, but I find it a way of reflection and also a way of clearing my mind from things that sometimes trouble me or make me feel homesick. A difference from the way we practice our religion in Columbia is that people there are more devoted (more into going to church) and more faithful than here in the Boston area, because I have noticed that many people here don't practice their religion that much because they feel that sometimes it takes too much time from their busy schedule. How busy can you be on a Sunday morning or afternoon? Please, please don't forget your prayers for peace.

Hi! I'm from the Commonwealth of Dominica, and I'm of the Protestant faith. I grew up in the church and I am thankful for that up to this date. The main lesson which I learned was that God is a good God! Try him and I'm sure he won't let you down.

Hi! My cultural identity is American. My family is Irish, Italian, Scottish and German — the true example of the great melting pot, which is what America is. I was born a Catholic, but now consider myself Protestant. My deepest wishes are for the safety of the Allied troops in the Middle East and hope for their family and friends.

Hi! I'm from Australia, and I'm an Indian also.

I am of Polish and Italian descent. I was raised a Catholic, but now I'm more of the "need to be religious" religion. You know the religion, the one where you only pray when you need to. E.g. God, if you grant me this one wish I will go to church faithfully. . . . Come home safe, guys!

As a Jew I see how our grandparents were when they came overseas. I think religion is a thing in America which is not regarded as a very high priority. We should get back to the place we were before industry and business got big. Culture and religion are inside the person. If the person doesn't have it, no one else will have it for the person.

I am a Roman Catholic and a religious woman (nun) on a leave of absence from the community. Although I struggle with being a woman in the R.C. church, I stay with the struggle because I believe in and love many of the traditions and the long heritage of the Catholic faith, and I believe in and pray for the vision of peace.

I was raised a pentecostal Puerto Rican female but at an early age I left the church and I am now going to church in any religion of my choice. However, my faith in the Lord is very powerful. I truly

believe that He is the Almighty, and without faith in God things can be tough, but God is always with us. We are his family. He loves us all the same. He is truly an equal opportunity God.

MERHABA (Hi, in Turkish). We are all MBA's at Suffolk who are Moslems. We like the States and we pray the war will end soon. "Turks at Suffolk."

I was raised a Protestant but when I came out as a lesbian, my family rejected me. Now I am on my own spiritual journey, trying to see if there is anything in religion for me. I believe in Spirit, but why are religions so judgmental?

Hello, I am an Afro American. My religion, which is Christianity, is suitable, because it has room for the Jew and the Gentile. Plus, it communicates that love through God keeps hope alive for unity, which is again God Almighty!

Hello, at the moment I am an existentialist.

Hi! I'm of Italian-Irish heritage, R.C. religion. We're all the same people. Give peace a chance worldwide.

Hello! I was raised in a pentecostal church, and I, too, am not practicing any religion now, but my belief in God shall always remain with me. I can never deny his importance in my life. And I truly believe that God has an impact on everyone's life. He loves everyone.

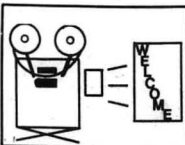
Yes, there are homosexual students at Suffolk, lots of them. We are your classmates and your friends, and we need your support.

I'm a nonpracticing Catholic. Although I do not go to Mass, I truly feel that without faith in God you cannot get very far. You always need hope and you can find that in God.

Hi! I am from Puerto Rico. I am Catholic, and I believe you have to have a lot of faith in God in order to survive. God bless peace in the Middle East!

I am a WASP — a white, Anglo-Saxon (Dutch, English) Protestant. I am a Quaker, a member of the Religious Society of Friends. One thing I appreciate about Quakers is that we believe that everyone is equal in God's eyes. So we don't have ministers or priests; we worship in silence, waiting together and praying together for the Spirit of Love to guide us. And since each human being has God in them, we oppose all killing.

We all share this planet together. The diversity that we all have in common is what makes this world a beautiful place to live. Everyone has their own religion and belief, but the most commonly spread belief is love and peace for every human. We all have to coexist on this tiny planet. So we all should allow everyone their own uniqueness and continue to strive for harmony within this world. I am an American. Heritage: Italian/Portuguese. Religion: all.



The Suffolk Experience



The ultimate Suffolk Experience

by Sandra Giannato

Dan Indicianni graduated from Suffolk University at the end of May. He has an unusual story to tell about his Suffolk experience.

Indicianni took advantage of all that Suffolk had to offer him. He not only studied here at Suffolk, but he was also an exchange student in a program with the University of Connecticut which took him to Urbino, Italy.

Last July began Indicianni's senior year at the University of Urbino where he studied Renaissance Art and advanced level Italian. With the help of SAFARI, he was able to learn Italian not only in a classroom atmosphere, but right in Italy itself, interacting with native Italians.

Indicianni compared Italian universities to American universities and found that "unlike in Italy, the professors do all the talking and the students do all the listening."

He found the dorms to be just like American dorms, complete

with stoves and refrigerators. Indicianni said, "It was magical and like being in a dream. One day you studied art and architecture in a book and the next day you were actually standing in front of it."

Although the pace of life is much slower in Italy, Indicianni found that after a month he too was becoming like the Italians and stopping to converse with the proprietors and clerks in the stores each time he made a purchase. Indicianni recommends all students to "GO! Don't hesitate. SAFARI loans are not hard to get and they are interest free."

Here at Suffolk, Indicianni was a class representative in the Student Government Association for two years, a member of the Council of Presidents in his junior year, and a member of the Political Science Association for three years.

He graduated with a Bachelor of Arts degree in Political Science. Indicianni would like to pursue a career in International Marketing.

Studying abroad

compiled by Christina Filarowski

Some students may be interested in expanding their Suffolk experience to include a semester or two of studying in a foreign country. Suffolk makes the possibility of studying abroad very approachable through various programs which will be discussed below.

Project SAFARI

SAFARI: Study at Foreign Academically Recognized Institutions. SAFARI is a loan program that provides financial support for students involved in any foreign exchange program. Any full-time student in good standing at Suffolk is eligible to apply for an interest-free SAFARI loan to assist in meeting their costs.

SAFARI loans are awarded on the basis of:

- 1) a project description justifying the need for foreign study.
- 2) approval by the appropriate department chairperson.
- 3) the student's previous demonstration of satisfactory achievement in the general area of the project.

Additional details on application procedure and financial arrangements are available from the chairperson of the Committee on Study Abroad.

Interfuture

Interfuture (Intercultural Studies for the future): A junior-year-abroad program. Students eligible to apply are sophomores in the top 10% of their class and (occasionally) outstanding freshmen.

Interfuture Scholars undertake an intensive experience in intercultural study. During an eight-month preparatory period, the student prepares an intercultural independence study project with the help of a faculty advisor on campus and a series of Interfuture conferences. The participant carries out his/her research at home and then abroad — in, if possible, both a North Atlantic and a Third World nation.

Charles University, Prague

This is an academic exchange program with the Charles University in Prague, Czechoslovakia. Each spring semester the CLAS sends a two-week study tour to Prague, where the participants are hosted by the Charles University.

Center for International Studies, Madrid

Suffolk University has arranged with the Center for International Studies in Madrid, Spain to accept Suffolk University students for one-semester and two-semester academic exchange visits. There, they will be enrolled for 15 credits in regularly scheduled classes over which Suffolk University has sole and direct academic control.

ce



nce

iani said, "It was magical and studied art and architecture in utually standing in front of it." h slower in Italy, Indicianni found ming like the Italians and stop- rs and clerks in the stores each omments all students to "GO!" t hard to get and they are interest

a class representative in the Stu- 3 years, a member of the Council 1 member of the Political Science

f Arts degree in Political Science, eer in International Marketing.

ture es for the future): A junior-year- to apply are sophomores in the onally) outstanding freshmen. an intensive experience in inter- nth preparatory period, the stu- pendence study project with the i and a series of Interfuture con- at his/her research at home and h a North Atlantic and a Third

sity, Prague

rogram with the Charles Univer- spring semester the CLAS sends where the participants are hosted

ional Studies, Madrid

with the Center for International Suffolk University students for emic exchange visits. There, they arly scheduled classes over which rect academic control.



Suffolk ABC's

continued from pg. 1

5) **BLC (Ballotti Learning Center):** Located on the third floor of the new Ridgeway Building, this is a resource to all students on campus. Ranging from tutorial assistance, study groups and outreach programs to self-study, computers and a place to study, the BLC should definitely be checked out.

6) **Bookstore:** Recently moved to a new facility on Cambridge Street (adjacent to the Ridgeway Building's main entrance). This is where you buy your texts and supplies. You can also find Suffolk paraphernalia (sweatshirts, T-shirts, etc., etc.), general reading books, magazines, snack foods, candy, greeting cards, gifts etc., etc.

7) **the "Cafe":** This is the cafeteria on the third floor of the Sawyer Building where a great deal of eating and socializing takes place (also rats a.k.a. rathskellars).

8) **CLEP (College Level Examination Program):** This is a test offered through the BLC that could give you college credit. For more information, call the BLC at 573-8235, or stop by Ridgeway 300.

9) **COP (Council of Presidents):** This organization is comprised of the presidents of all organizations at Suffolk. Their job is to coordinate all club activities and prevent conflicts in programming major events.

10) **Dean of Students:** Have any problems, comments, questions? The Dean of Students will be more than happy to help out.

11) **Derne Street:** This is a shortened version of "The Derne Street Deli," located on the corner of Derne and Temple Streets. Derne Street is a popular breakfast/lunch/study spot for Suffolk students, staff and faculty alike.

12) **Donahue:** Building which houses Suffolk's Law School. There is a cafeteria in the basement for use by all students and an extra quiet library on the fourth floor for that extra-intensive study.

13) **FAF:** This stands for Financial Aid Form. These can be picked up at the Financial Aid Office on the 8th floor of the Sawyer Building.

14) **Fenton:** Located on the corner of Derne and Hancock Streets — home to classrooms, the Student Lounge, a computer center, the English Department and the Psychology Department as well as Health Services.

15) **the "Hat" (a popularized version of "The Red Hat"):** This is a food and drink establishment located on the corner of Cambridge and Bowdoin Streets. A popular hangout where students relax and socialize.

16) **the "Hill":** This is a slang term for Beacon Hill or a term for going from the Sawyer Building to Fenton or Archer (I'm heading down "the Hill").

Suffolk ABC's
continued on pg.8

Places to eat

Following is a list of eating places frequented by hungry Suffolk students.

... On the home turf:

The Derne Street Deli: located on the corner of Derne and Temple Streets. Reasonable prices, yummy fare which includes deli sandwiches, soups, breakfast foods, chips, beverages. A good place to go for a good cup of coffee.

Prime's: located a block and a half down Murtle Street (at the Hancock Street end of Derne Street). Prices: fair. Food: delicious — includes pizza, pasta dishes, salads, sandwiches, beverages.

The Bostonian: located on Cambridge Street near the Red Hat. Offers deli sandwiches, salads, breakfast foods, beverages.

The Red Hat: located on the corner of Bowdoin and Cambridge Streets. Prices: fair. Offers, finger foods (such as Buffalo wings) sandwiches, salads, beverages.

Nemo's: located on the corner of Derne and Bowdoin Streets. Prices very, very reasonable. Offers hot dogs and hamburgers, chips, beverages. Good place to go for a cheap and quick meal.

Capitol House: located on the corner of Bowdoin Street and Ashburton Place. Deli foods — hamburgers, hotdogs, sandwiches, salads; and breakfast foods. Prices: good.

Pushcart Deli: located on the corner of Bowdoin and Beacon Streets. Prices: okay. A lighter fare for the gourmet in you — gourmet deli sandwiches, fruits, salads... you know, healthy stuff.

Sawyer Cafe/Donahue Cafe: located in Sawyer and Donahue. Prices: fair. A wide variety of food — mix and match if you like.

... And a little bit further away:

Faneuil Hall: located a 10 minute walk away from Suffolk (behind the City Hall). Inside is an enormous food court offering food from all corners of the globe at a variety of prices. Most are within the student's budget.

Pizzeria Uno: located across the street running parallel to Faneuil Hall. What more is there to say?

The Corner Mall: located at downtown crossing. Inside is a food court featuring Italian, Chinese, Greek, American (McDs), health food. Prices are affordable.

Lafayette Place: located behind Jordan Marsh at downtown crossing.

Another food court featuring a variety of foods from a variety of places at a variety of prices.

Papa Gino's: located on Tremont Street.

Brigham's: also located on Tremont Street. Not just ice-cream. Prices are reasonable.

The common: Of course, during warmer weather, there is always someone selling hot dogs, pretzels, roasted nuts, chicken fingers or fried dough on the common (usually around the Park Street T station).

Happy Eating!



Join the staff of The Suffolk Journal
Come to the first meeting at
1 p.m., Tuesday Sept. 10
in room 116 (SAC)

The Suffolk Journal
28 Derne Street
Boston, MA 02114
Room 116

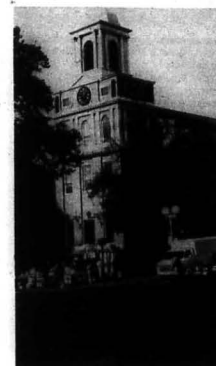
The Suffolk Journal is the official newspaper of the campus community and offers the opportunity to gain practical experience in journalism and its related fields. All students, regardless of major, are invited to contribute to the production of the Journal. The views expressed in these pages are in no way meant to reflect those of the school's administration.

Editorial Board

Editor-In-Chief Heather A. Swails
Managing Editor Adam Mendonça
Feature Editor Sandra Giannato
Sports Editor Paul Ring
Photo Editor Candida Ferreira
Advisory Board: Doreen Matta, Richard Preiss, Wendy Sanford
Staff Reporters: Edmond Brosnan, Ivy Cifazzari, Tim Cahill, Adam Freedman, Lori Rau, Lawrence Walsh, Captain Avatar.

TYPESETTING BY COOL-COMP

Boston i





Suffolk ABC's

continued from pg. 1

5) **BLC (Ballotti Learning Center):** Located on the third floor of the new Ridgeway Building, this is a resource to all students on campus. Ranging from tutorial assistance, study groups and outreach programs to self-study, computers and a place to study, the BLC should definitely be checked out.

6) **Bookstore:** Recently moved to a new facility on Cambridge Street (adjacent to the Ridgeway Building's main entrance). This is where you buy your texts and supplies. You can also find Suffolk paraphernalia (sweatshirts, T-shirts, etc.), general reading books, magazines, snack foods, candy, greeting cards, gifts etc., etc.

7) the "Cafe": This is the cafeteria on the third floor of the Sawyer Building where a great deal of eating and socializing takes place (also rats a.k.a. rathskellars).

8) **CLEP (College Level Examination Program):** This is a test offered through the BLC that could give you college credit. For more information, call the BLC at 573-8235, or stop by Ridgeway 300.

9) **COP (Council of Presidents):** This organization is comprised of the presidents of all organizations at Suffolk. Their job is to coordinate all club activities and prevent conflicts in programming major events.

10) **Dean of Students:** Have any problems, comments, questions? The Dean of Students will be more than happy to help out.

11) **Derne Street:** This is a shortened version of "The Derne Street Deli," located on the corner of Derne and Temple Streets. Derne Street is a popular breakfast/lunch/study spot for Suffolk students, staff and faculty alike.

12) **Donahue:** Building which houses Suffolk's Law School. There is a cafeteria in the basement for use by all students and an extra quiet library on the fourth floor for that extra-intensive study.

13) **FAF:** This stands for Financial Aid Form. These can be picked up at the Financial Aid Office on the 8th floor of the Sawyer Building.

14) **Fenton:** Located on the corner of Derne and Hancock Streets — home to classrooms, the Student Lounge, a computer center, the English Department and the Psychology Department as well as Health Services.

15) the "Hat" (a popularized version of "The Red Hat"): This is a food and drink establishment located on the corner of Cambridge and Bowdoin Streets. A popular hangout where students relax and socialize.

16) the "Hill": This is a slang term for Beacon Hill or a term for going from the Sawyer Building to Fenton or Archer (I'm heading down "the Hill").

Suffolk ABC's
continued on pg.8

Places to eat

Following is a list of eating places frequented by hungry Suffolk students.

... On the home turf:

The Derne Street Deli: located on the corner of Derne and Temple Streets. Reasonable prices, yummy fare which includes deli sandwiches, soups, breakfast foods, chips, beverages. A good place to go for a good cup of coffee.

Primo's: located a block and a half down Murtle Street (at the Hancock Street end of Derne Street). Prices: fair. Food: delicious — includes pizza, pasta dishes, salads, sandwiches, beverages.

The Bostonian: located on Cambridge Street near the Red Hat. Offers deli sandwiches, salads, breakfast foods, beverages.

The Red Hat: located on the corner of Bowdoin and Cambridge Streets. Prices: fair. Offers, finger foods (such as Buffalo wings) sandwiches, salads, beverages.

Nemo's: located on the corner of Derne and Bowdoin Streets. Prices very, very reasonable. Offers hot dogs and hamburgers, chips, beverages. Good place to go for a cheap and quick meal.

Capital House: located on the corner of Bowdoin Street and Ashburton Place. Deli foods — hamburgers, hotdogs, sandwiches, salads; and breakfast foods. Prices: good.

Pushcart Deli: located on the corner of Bowdoin and Beacon Streets. Prices: okay. A lighter fare for the gourmet in you — gourmet deli sandwiches, fruits, salads... you know, healthy stuff.

Sawyer Cafe/Donahue Cafe: located in Sawyer and Donahue. Prices: fair. A wide variety of food — mix and match if you like.

... And a little bit further away:

Faneuil Hall: located a 10 minute walk away from Suffolk (behind the City Hall). Inside is an enormous food court offering food from all corners of the globe at a variety of prices. Most are within the student's budget.

Pizzeria Uno: located across the street running parallel to Faneuil Hall. What more is there to say?

The Corner Mall: located at downtown crossing. Inside is a food court featuring Italian, Chinese, Greek, American (McDs), health food. Prices are affordable.

Lafayette Place: located behind Jordan Marsh at downtown crossing.

Another food court featuring a variety of foods from a variety of places at a variety of prices.

Papa Glas's: located on Tremont Street.

Brigham's: also located on Tremont Street. Not just ice-cream. Prices are reasonable.

The common: Of course, during warmer weather, there is always someone selling hot dogs, pretzels, roasted nuts, chicken fingers or fried dough on the common (usually around the Park Street T station).

Happy Eating!



Join the staff of The Suffolk Journal
Come to the first meeting at
1 p.m., Tuesday Sept. 10
in room 116 (SAC)

The Suffolk Journal
28 Derne Street
Boston, MA 02114
Room 116

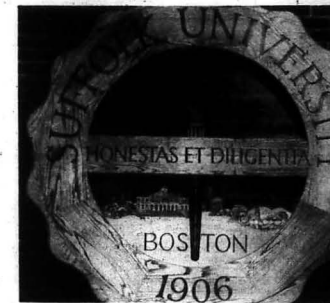
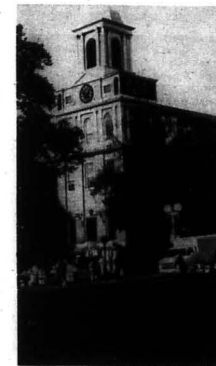
The Suffolk Journal is the official newspaper of the campus community and offers the opportunity to gain practical experience in journalism and its related fields. All students, regardless of major, are invited to contribute to the production of the Journal. The views expressed in these pages are in no way meant to reflect those of the school's administration.

Editorial Board

Editor-In-Chief Heather A. Swails
Managing Editor Adam Mendonça
Feature Editor Sandra Giannato
Sports Editor Paul Ring
Photo Editor Candida Ferreira
Advisory Board: Doreen Matta, Richard Preiss, Wendy Sanford
Staff Reporters: Edmond Brosnan, Ivy Cifazzari, Tim Cahill, Adam Freedman, Lori Rau, Lawrence Walsh, Captain Avatar.

TYPESETTING BY COOL-COMP

Boston is our can





Suffolk ABC's

continued from pg. 1

5) **BLC (Ballotti Learning Center):** Located on the third floor of the new Ridgeway Building, this is a resource to all students on campus. Ranging from tutorial assistance, study groups and outreach programs to self-study, computers and a place to study, the BLC should definitely be checked out.

6) **Bookstore:** Recently moved to a new facility on Cambridge Street (adjacent to the Ridgeway Building's main entrance). This is where you buy your texts and supplies. You can also find Suffolk paraphernalia (sweatshirts, T-shirts, etc., etc.), general reading books, magazines, snack foods, candy, greeting cards, gifts etc., etc.

7) the "Cafe": This is the cafeteria on the third floor of the Sawyer Building where a great deal of eating and socializing takes place (also rats a.k.a. ratheaters).

8) **CLEP (College Level Examination Program):** This is a test offered through the BLC that could give you college credit. For more information, call the BLC at 573-8235, or stop by Ridgeway 300.

9) **COP (Council of Presidents):** This organization is comprised of the presidents of all organizations at Suffolk. Their job is to coordinate all club activities and prevent conflicts in programming major events.

10) **Dean of Students:** Have any problems, comments, questions? The Dean of Students will be more than happy to help out.

11) **Derne Street:** This is a shortened version of "The Derne Street Deli," located on the corner of Derne and Temple Streets. Derne Street is a popular breakfast/lunch/study spot for Suffolk students, staff and faculty alike.

12) **Donahue:** Building which houses Suffolk's Law School. There is a cafeteria in the basement for use by all students and an extra quiet library on the fourth floor for that extra-intensive study.

13) **FAF:** This stands for Financial Aid Form. These can be picked up at the Financial Aid Office on the 8th floor of the Sawyer Building.

14) **Fenton:** Located on the corner of Derne and Hancock Streets — home to classrooms, the Student Lounge, a computer center, the English Department and the Psychology Department as well as Health Services.

15) the "Hat" (a popularized version of "The Red Hat"): This is a food and drink establishment located on the corner of Cambridge and Bowdoin Streets. A popular hangout where students relax and socialize.

16) the "Hill": This is a slang term for Beacon Hill or a term for going from the Sawyer Building to Fenton or Archer (I'm heading down "the Hill").

Suffolk ABC's
continued on pg.8

Places to eat

Following is a list of eating places frequented by hungry Suffolk students.

... On the home turf:

The Derne Street Deli: located on the corner of Derne and Temple Streets. Reasonable prices, yummy fare which includes deli sandwiches, soups, breakfast foods, chips, beverages. A good place to go for a good cup of coffee.

Prime's: located a block and a half down Murtle Street (at the Hancock Street end of Derne Street). Prices: fair. Food: delicious — includes pizza, pasta dishes, salads, sandwiches, beverages.

The Bostonian: located on Cambridge Street near the Red Hat. Offers deli sandwiches, salads, breakfast foods, beverages.

The Red Hat: located on the corner of Bowdoin and Cambridge Streets. Prices: fair. Offers finger foods (such as Buffalo wings) sandwiches, salads, beverages.

Nemo's: located on the corner of Derne and Bowdoin Streets. Prices very, very reasonable. Offers hot dogs and hamburgers, chips, beverages. Good place to go for a cheap and quick meal.

Capitol House: located on the corner of Bowdoin Street and Ashburton Place. Deli foods — hamburgers, hotdogs, sandwiches, salads; and breakfast foods. Prices: good.

Pushcart Deli: located on the corner of Bowdoin and Beacon Streets. Prices: okay. A lighter fare for the gourmet in you — gourmet deli sandwiches, fruits, salads... you know, healthy stuff.

Sawyer Cafe/Donahue Cafe: located in Sawyer and Donahue. Prices: fair. A wide variety of food — mix and match if you like.

... And a little bit further away:

Faneuil Hall: located a 10 minute walk away from Suffolk (behind the City Hall). Inside is an enormous food court offering food from all corners of the globe at a variety of prices. Most are within the student's budget.

Pizzeria Uno: located across the street running parallel to Faneuil Hall. What more is there to say?

The Corner Mall: located at downtown crossing. Inside is a food court featuring Italian, Chinese, Greek, American (McDo), health food. Prices are affordable.

Lafayette Place: located behind Jordan Marsh at downtown crossing.

Another food court featuring a variety of foods from a variety of places at a variety of prices.

Papa Gino's: located on Tremont Street.

Brigham's: also located on Tremont Street. Not just ice-cream. Prices are reasonable.

The common: Of course, during warmer weather, there is always someone selling hot dogs, pretzels, roasted nuts, chicken fingers or fried dough on the common (usually around the Park Street T station).

Happy Eating!



Join the staff of The Suffolk Journal
Come to the first meeting at
1 p.m., Tuesday Sept. 10
in room 116 (SAC)

The Suffolk Journal
28 Derne Street
Boston, MA 02114
Room 116

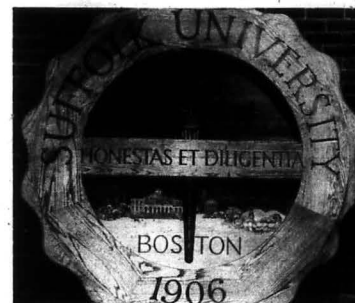
The Suffolk Journal is the official newspaper of the campus community and offers the opportunity to gain practical experience in journalism and its related fields. All students, regardless of major, are invited to contribute to the production of the Journal. The views expressed in these pages are in no way meant to reflect those of the school's administration.

Editorial Board

Editor-In-Chief Heather A. Swails
Managing Editor Adam Mendonça
Feature Editor Sandra Giannato
Sports Editor Paul Ring
Photo Editor Candida Ferreira
Advisory Board: Doreen Matta, Richard Preiss, Wendy Sanford
Staff Reporters: Edmond Brosnan, Ivy Cifazzari, Tim Cahill, Adam Freedman, Lori Rau, Lawrence Walsh, Captain Avatar.

TYPESETTING BY COOL-CONP

Boston is our campus





Athletics

S.U. athletics: A new era

by Doreen Matta, Athletics

Suffolk University Athletics entered into a new and exciting era this year with the grand opening of its first gymnasium, fitness center, locker rooms and physiotherapy room. These facilities, located in the Ridgeway Building on Cambridge Street, offer students an on-campus opportunity to strengthen their bodies while developing their minds.

The full-size gymnasium has a main basketball court and two side intramural courts. In addition, there are accommodations for volleyball, aerobics and other indoor activities. The gym is also home court for the university's men's and women's basketball teams.

The fitness center is fully-equipped with stationary bicycles, rowing machines, tread mills, stair simulation machines, free weights and a variety of muscle strengthening equipment.

The Athletic Department welcomes you to take advantage of these facilities as well as the programs that are offered. Student athletes can try out for a varsity team in the sports of baseball, basketball, cross country, golf, hockey, soccer, softball or tennis.

For students interested in non-varsity programs there are intramural volleyball and basketball leagues, the cheering club or aerobics classes. And, for those who

prefer to work out on their own, there are the gym and fitness center.

There are three full-time staff people in the Athletic Department, an office secretary and two graduate assistants. James E. Nelson is the director, men's basketball coach and teaches a Theory and Practice of Athletics course. Associate Director Joe Walsh coaches baseball, women's basketball and cross country. Doreen Matta is the assistant athletic director, women's basketball assistant coach and head coach of women's softball.

The remainder of the varsity teams are coached by part-time members of the department. Fabian DePeiza is soccer

coach, Tony Farma coaches golf, Bill Burns is head coach for the hockey team and Richard Levenson coaches both men's and women's tennis.

There are a variety of work-study positions in the athletic department available for students. These jobs include team managers, intramural officials, and support staff for the gym, fitness center and office.

The Athletic Department is dedicated to serving the student population at Suffolk by providing competitive and recreational activities that broaden a student's education. The challenge to commit yourself to a program of exercise and fitness is waiting for you at Suffolk.

More than just academics

by Tim Ervin

Suffolk University provides an extensive list of extracurricular activities and organizations.

Taking part in the intramural or varsity sports programs, or just getting involved with a club, will enhance your college experience.

The clubs at Suffolk encompass a wide range of interests to accommodate any student. Whether you join Program Council, a fraternity or sorority, WSUB television, WSFR radio, or the newspaper or yearbook staff, you will get the most out of your college life. By joining the golf, tennis, hockey, basketball or baseball teams, you will be able to compete athletically as well as academically.

College is not an experience to be limited to your school work only. By getting involved with sports or clubs, you will make friends and build relationships that will last a lifetime. Don't miss out, get involved.

RECREATIONAL ACTIVITIES

- | | |
|--------------------------|----------------------------|
| 1) Intramural Basketball | 5) Foosball (table soccer) |
| 2) Aerobics | 6) Ping Pong |
| 3) Weight lifting | 7) Dome Hockey |
| 4) Volleyball | |

Suffolk ABC's

continued from pg.6

17) The Journal: This is the official newspaper of the student body. It contains news about Suffolk as well as features concerning Suffolk life and announcements of meetings etc.

18) One Beacon: This refers to the university's administrative offices which are located on the 25th floor of the building at One Beacon Street.

19) PHI SIG SIG (Phi Sigma Sigma): The only sorority at Suffolk at this time. PHI SIG SIG is involved in many community service projects throughout the year as well as events such as the rats.

20) Primo's: An off heard word around Suffolk — this is a good one to know. Primo's is an Italian eat-in/take-out restaurant located a block and a half down Myrtle Street (which runs perpendicular to Hancock Street). They have wonderful Ravioli Parmigiana and Chicken Salad!

21) Rat a.k.a. Ratshkellar: This is a party/dance usually held once a month on a Friday afternoon. Each rat has a unique, fun, and exciting theme and is held in the cafe — there's free food.

22) Ridgeway: Suffolk's newest addition located on Cambridge Street. This building is home to our brand-new full-sized gymnasium, weight-room, Athletics Department, BLC, Dean of Students, the Journalism/Communications Department, and more.

23) SAC: Stands for Student Activities Center. SAC is the Student Activities Office. SAC is adjacent to Fenton and is home to Suffolk's various clubs and organizations.

24) Sawyer: Home to the library, the cafe, the SOM administrative offices, the Registrars, the Financial Aid Office, the History Department, the Government Department, the Sociology Department, the Media Services, the copy center, the Suffolk Police, and more.

25) SGA (Student Government Association): This is the representative body for all full-time undergraduate students. It deals with financial and academic concerns of the students as well as issues pertinent to undergrad students.

26) SOM/CLAS: SOM stands for School of Management. CLAS stands for College of Liberal Arts and Sciences.

27) Springfest: Suffolk's annual celebration of the arrival of spring and the end of classes (and the coming of summer). A "talent show" put on by students, faculty and staff.

28) Temple Street Fair: An annual street fair held in late April on Temple Street. Features live entertainment, carnival booths sponsored by various clubs and organizations, food, and prizes. Don't miss out on the fun when it comes around!

29) TKE (teek) (Tau Kappa Epsilon): This is Suffolk's all-male fraternity which works on community service projects throughout the year as well as special events such as rats.

30) Tree-lighting: The annual lighting of Suffolk's own Christmas tree decorated with ornaments made by the various clubs and organizations. The tree is put up in the courtyard across from Donahue.

31) UMS: University Media Services, located on the 9th floor of Sawyer. A great resource for class projects requiring art work, UMS provides everything from clip-art to stick-on letters for posters.

32) Venture: Suffolk's literary magazine filled with the creative work of Suffolk students, faculty and staff. Be sure to contribute a poem, a short-story, a photograph or a drawing.

33) WSFR: Suffolk Free Radio — Suffolk's own in-house radio station pipes music into the offices and student hangouts (the Fenton Lounge, the Cafe, . . .)

34) WSUB: Suffolk's own television station. Video tapes various Suffolk events and produces own Suffolk programs.



The Suffolk Journal

Volume 50 Number 2

Wednesday, September 25, 1991

Kiely, Cullen resign from SGA

by Mary Susan Halpin

Suffolk's Student Government Association began the new year on an unstable note as two of its sophomore members, Kathy Kiely and Tammi Cullen, resigned from their positions shortly following the beginning of classes.

Vice president of the SGA Executive Board and president of the sophomore class, Kathy Kiely was unable to return to Suffolk this semester. Tommy Belmonte, president of SGA, said that Kiely's primary reason for leaving SGA and Suffolk was because of personal financial problems.

According to Belmonte, Kiely had every intention of returning to Suffolk if she could afford it, but it turned out to be impossible. Kiely was not available for comment as of press time.

Sophomore representative Tammi Cullen also resigned from her position in the SGA legislative body in the early days of this semester.

Cullen, a two term SGA member, made her resignation announcement soon after Kiely's resignation because official, extenuating circumstances were cited as the reason for her resignation.

Cullen has been a valuable member of the SGA. During her freshman year she initiated, and was the driving force behind, Suffolk's recycling program. Her most recent accomplishment was the sophomore class picnic over the summer. Overall, Cullen was known for putting 100 percent into every project in which she became involved.

Belmonte acted quickly to fill the Executive Board seat during the second meeting of the SGA. Nominations were opened and Senior President Joe Cawley was elected to the position.

At the same meeting, Robert Prezioso, sophomore vice president, assumed the presidency of the class by appointment of his fellow class representatives. The remaining sophomore seats will be filled during the upcoming freshman class elections.

The resignations of Kiely and Cullen only underline the problems that the SGA and other organizations have experienced in recruiting members as a university-wide problem of apathy.

Piggy-backing the upcoming freshman elections will be the election for the two sophomore seats, as well as two senior seats.

Resign SGA continued on page 4

Suffolk's ESL program receives grant from Riley Foundation

by Jennifer Wall

Suffolk University's ESL (English as a Second Language) program received a \$50,000 grant this past June. The grant was given by one of the wealthiest foundations in Boston, the Maletti Louise Riley Foundation.

The ESL program at Suffolk has helped many language minority students from Boston and its vicinity in the process of integrating into a four-year college degree program. According to Fernanda Rodrigues, program director for the ESL program, 42 new students were admitted into the program this Fall, making a total of 86 students in the program now. The majority of the students are Asian and Hispanic, although this year the program has a Russian, a Pakistani and a Polish student.

The program, which was implemented in 1989, has evolved and expanded since its conception. At the beginning of the school year, each new student is given a CELT (Comprehensive English Language Exam) to determine the appropriate coursework for them. The student is then placed on either an elementary or intermediate level, depending on their language ability. Students entering on the elementary level are in a two-year program but do not receive course credit until they move up to the intermediate level. Rodrigues noted that students are

able to move up earlier in the program depending upon their progress. At the end of the program, the students are well prepared to enter college mainstream courses.

The grant has enabled ESL to expand and offer the students more help as well as knowledge. According to Rodrigues, the money is currently being used towards: Two new part-time bilingual tutors (one with a Hispanic background and the other a Chinese background), history and math professors, cultural activities, parties for the students, speakers, a resource library for ESL, and a state house tour and a trip to the Museum of Fine Arts.

The Riley Foundation's basic focus is on funding for the Boston community. According to the *Taft Foundation Reporter*, the foundation is mainly interested in "improving the quality of life for people in Massachusetts, particularly in the Boston area," and gives "particular consideration to the needs of children and youth." A representative from the foundation was not available to speak with.

Julio Jimenez, a former ESL student and currently a Junior CIS major at Suffolk, admits that had it not been for the ESL program "it would've been so awful I would've dropped out."

Jimenez began at Suffolk in 1989, the same year the ESL program began.

ESL continued on page 9



Suffolk University and The Boston Herald sponsored the first Mayoral debate. Pictured are (from left to right): Patrick J. Purcell, Rev. Grayland Ellis-Hagler, Edward Doherty, Suffolk President David J. Sargent, and Mayor Raymond L. Flynn. (Suffolk University photo).

Mayoral debate held at Suffolk University

by Patricia Cobb

Suffolk University and the Boston Herald sponsored the first Mayoral debate, for the City of Boston between incumbent Mayor Raymond L. Flynn, Rev. Grayland Ellis-Hagler, and Edward Doherty. Doherty and Hagler were endorsed by Flynn's 8 year record as Boston's "neighborhood mayor." Both Hagler and Doherty have extensive private sector backgrounds. Reverend Hagler is the founder and senior pastor of the Church of the United Community in Roxbury. Edward Doherty has been the president of the Boston Teachers Union for the past 8 years.

The debate was moderated by Rachelle Cohen, Editorial Page Editor of the Herald, with columnist Leonard Greene and City Hall Bureau Chief, Joe Sciaccia, serving as panelists. A wide variety of topics were discussed including Boston residency laws, Police review board, youth services, public education and the city's diversity.

Doherty contended that job qualifications, not residency laws, should be the basis for hiring for Boston jobs. He stated that teachers with seniority should not lose their jobs on the basis of residency requirements. On the stance of affirmative action, Doherty supported it, but not racial quotas. Also, he suggested that public school children arrived at school suffer hunger, abuse, drug addiction, poverty and lack of parental guidance. Even with the schools best efforts, these

issues can not be addressed. He declared that the community and, not the schools were neglecting the children.

Hagler's emphasis in the debate was on Boston jobs for Boston people. During hard economic times we must keep the paycheck in the local communities, Hagler declared. Hagler asserted that the Flynn administration did not acknowledge serious city administrative problems until the story was publicized in the press. Hagler made further criticisms of Flynn's friendship with Commissioner Mickey Roache, and attacked the reluctance of a civilian review board by the administration. This was the only issue Flynn refused to give a rebuttal comment on.

Flynn's position was that the city's diversity was "second to none," and his administration is responsible for the climate for people working together. He contended that hiring of minorities during his terms as mayor increased substantially on city projects. Flynn defended against the Hagler attack on the public relations of the police department declaring that the city did not need anyone dividing the police from the community, but helping to bring them together. Flynn also challenged Hagler's contention that the youth of the city had no programs available for recreation or socializing except at Chez Vous Roller-skating rink. He went on to name an extensive list of programs offered in the community for youth, claiming to help "enlighten" Rev. Hagler.

The tone of the debate was sharp and at times graced with wit, especially from Mayor debate continued on page 4