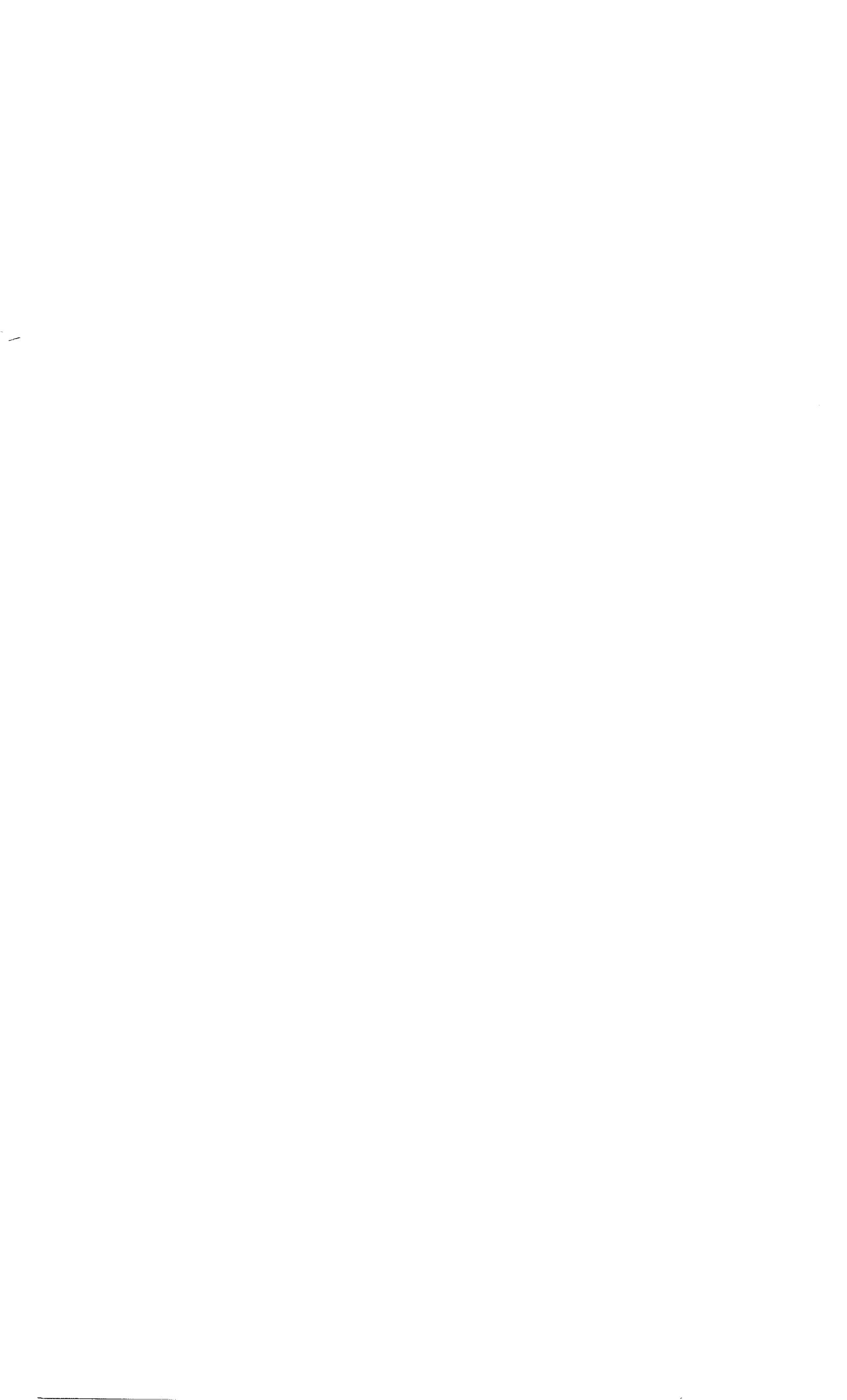


**Suffolk University**  
**2002-2003**  
**Directory**

**Please add the following information to your directory.**

<u>Name</u>	<u>Ext</u>	<u>Bldg/Rm</u>	<u>Dept</u>	<u>Title</u>
1. John D'Alleva	8110	A-183	Physical Plant	Electrician
2. Michael Dwyer	8639	B-25 <sup>th</sup> F1	Asst Treasurer	Office Asst Treasur
3. Constance Gagnon	1998	B-25 <sup>th</sup> F1	MIS	Prog/Analyst
4. Melissa Hausman	8506	D-516	Government	Assoc Prof
5. Kenneth King	3201	SGT-190H	Law School/JJC	Deputy Director
6. Richard Miller	8722	F-207	English	Asst Prof
7. Andrea Ortisi	8266	D-1 <sup>st</sup>	Dean-CAS	Director/Budget
8. Christopher Recklitis	6399	D-6 <sup>th</sup>	Psychology	Asst. Prof
9. Thomas Trott	1968	A-563	Biology	Asst. Prof
10. Alberto Zanzi	8358	S-658	Management	Assoc Prof
11. Jason Carter	8203	R-300	Comm & Journalism	Instructor



# SUFFOLK UNIVERSITY

## Employee Directory

2002-2003

### Sections

E-mail Addresses by Department  
E-Mail Directory Instructions  
Department Listing  
Alphabetical Employee List  
Employee List by Department  
Interpreter List

### KEY

- |   |   |   |
|---|---|---|
| <b>A-</b> Archer Building<br>20 Derne Street  | <b>D-</b> Donahue Building<br>41 Temple Street                                  | <b>RQP -</b> Right Question Project<br>2464 Mass Avenue<br>Suite 314<br>Cambridge, MA 02140 |
| <b>AP -</b> 20 Ashburton Place  | <b>DC -</b> Suffolk/Dean College<br>99 Main Street<br>Franklin, MA 02038        | <b>S -</b> Sawyer Building<br>8 Ashburton Place   |
| <b>ARL -</b> N.E.S.A.D.<br>75 Arlington Street  | <b>F -</b> Fenton Building<br>32 Derne Street                                   | <b>SGT-</b> Sargent Hall<br>120 Tremont Street  |
| <b>B -</b> 1 Beacon Street<br>25th Floor  | <b>FFS -</b> Friedman Field Station<br>RRI, Box 102<br>Edmunds, ME 04628        | <b>SULS -</b> SU Legal Services<br>350 Broadway<br>Chelsea, MA 02150                        |
| <b>BHI -</b> Beacon Hill Institute<br>15 Court Street<br>9th Floor Suite 900                        | <b>JJC -</b> Juvenile Justice Center<br>45 Bromfield Street                     | <b>T -</b> Goldberg Building<br>56 Temple Street  |
| <b>CC -</b> Suffolk/ Cape Cod<br>Community College<br>2240 Iyanough Road<br>W. Barnstable, MA 02668 | <b>R -</b> Ridgeway Building<br>148 Cambridge Street                            | <b>VI -</b> Visionaries Institute<br>PO Box 458<br>1375 Boardman St<br>Sheffield, MA 02157  |
| <b>CL-</b> Claflin Building<br>20 Beacon Street   | <b>RH -</b> Residence Halls<br>150 Tremont Street<br>(Also: 131 Tremont Street) |   |

### Department

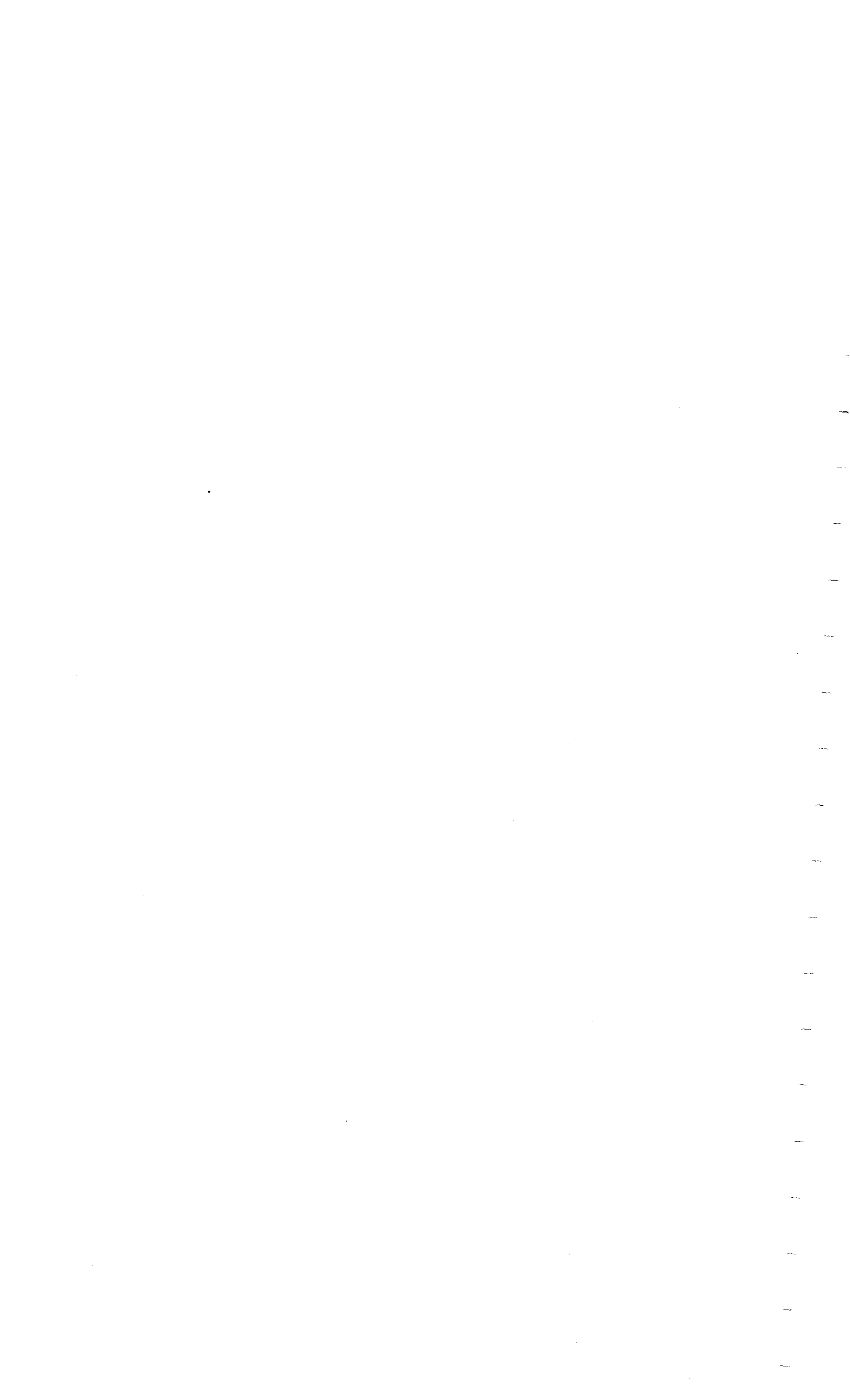
Assistant Treasurer  
Athletics  
Beacon Hill Institute  
Biology  
Budget Office, University  
Cape Cod Programs  
Career Services & Cooperative Education  
Chemistry  
Computer Information Systems  
Computer Science

### E-mail Address

[mdwyer@suffolk.edu](mailto:mdwyer@suffolk.edu)  
[jnelson@suffolk.edu](mailto:jnelson@suffolk.edu)  
[bhi@beaconhill.org](mailto:bhi@beaconhill.org)  
[vford@suffolk.edu](mailto:vford@suffolk.edu)  
[mdooley@suffolk.edu](mailto:mdooley@suffolk.edu)  
[gmsharman@aol.com](mailto:gmsharman@aol.com)  
[careers@suffolk.edu](mailto:careers@suffolk.edu)  
[ccarrabi@suffolk.edu](mailto:ccarrabi@suffolk.edu)  
[milin@suffolk.edu](mailto:milin@suffolk.edu)  
[krodrigu.suffolk.edu](mailto:krodrigu.suffolk.edu)

Corporate Education	<a href="mailto:lnazzaro@suffolk.edu">lnazzaro@suffolk.edu</a>
Counseling Center	<a href="mailto:kqarni@suffolk.edu">kqarni@suffolk.edu</a>
Dean College Programs	<a href="mailto:suffolk@dean.edu">suffolk@dean.edu</a>
Dean's Office -CAS	<a href="mailto:ndeddy@suffolk.edu">ndeddy@suffolk.edu</a>
Dean's Office -SSOM	<a href="mailto:ssom@suffolk.edu">ssom@suffolk.edu</a>
Economics	<a href="mailto:econ@suffolk.edu">econ@suffolk.edu</a>
Electrical & Computer Engineering	<a href="mailto:cakstin@suffolk.edu">cakstin@suffolk.edu</a>
English	<a href="mailto:scolafel@suffolk.edu">scolafel@suffolk.edu</a>
Enrollment Research & Planning	<a href="mailto:mduggan@suffolk.edu">mduggan@suffolk.edu</a>
Executive MBA Program, SSOM	<a href="mailto:pnowak@suffolk.edu">pnowak@suffolk.edu</a>
Financial Aid	<a href="mailto:finaid@suffolk.edu">finaid@suffolk.edu</a>
Friedman Field Station	<a href="mailto:cmerill@powerlink.net">cmerill@powerlink.net</a>
Friedman Field Station	<a href="mailto:rodmannffs@loa.com">rodmannffs@loa.com</a>
Government	<a href="mailto:erussako@suffolk.edu">erussako@suffolk.edu</a>
Graduate Admission	<a href="mailto:grad.admission@suffolk.edu">grad.admission@suffolk.edu</a>
Graduate Finance	<a href="mailto:gradfinance@suffolk.edu">gradfinance@suffolk.edu</a>
Help Desk, MIS	<a href="mailto:helpmis@suffolk.edu">helpmis@suffolk.edu</a>
Immigration Advising	<a href="mailto:oia@suffolk.edu">oia@suffolk.edu</a>
Law Admission	<a href="mailto:lawadm@suffolk.edu">lawadm@suffolk.edu</a>
Law Clinical Program	<a href="mailto:jlake@suffolk.edu">jlake@suffolk.edu</a>
Law Financial Aid	<a href="mailto:lawfaid@suffolk.edu">lawfaid@suffolk.edu</a>
Mail Services	<a href="mailto:mailservices@suffolk.edu">mailservices@suffolk.edu</a>
Math Support Center	<a href="mailto:dodge@suffolk.edu">dodge@suffolk.edu</a>
Mathematics	<a href="mailto:krodrigu.suffolk.edu">krodrigu.suffolk.edu</a>
MBA Program, SSOM	<a href="mailto:lhallber@suffolk.edu">lhallber@suffolk.edu</a>
Moakley Archives & Institute	<a href="mailto:bbowen@suffolk.edu">bbowen@suffolk.edu</a>
NESAD	<a href="mailto:NESAD1@suffolk.edu">NESAD1@suffolk.edu</a>
Online eMBA Program	<a href="mailto:suffolkemba@suffolk.edu">suffolkemba@suffolk.edu</a>
Payroll	<a href="mailto:aholland@suffolk.edu">aholland@suffolk.edu</a>
Physics	<a href="mailto:jsides@suffolk.edu">jsides@suffolk.edu</a>
Psychology	<a href="mailto:phd@suffolk.edu">phd@suffolk.edu</a>
Public Affairs	<a href="mailto:asina@suffolk.edu">asina@suffolk.edu</a>
Public Management	<a href="mailto:mmatava@suffolk.edu">mmatava@suffolk.edu</a>
Residence Life/Summer Programs	<a href="mailto:reslife@suffolk.edu">reslife@suffolk.edu</a>
Sawyer Library	<a href="mailto:sawlib@suffolk.edu">sawlib@suffolk.edu</a>
Second Language Services	<a href="mailto:lvinay@suffolk.edu">lvinay@suffolk.edu</a>
Souls Community Service Center	<a href="mailto:souls@suffolk.edu">souls@suffolk.edu</a>
Student Accounts	<a href="mailto:stdact@suffolk.edu">stdact@suffolk.edu</a>
Student Activities	<a href="mailto:activities@suffolk.edu">activities@suffolk.edu</a>
Student Advisory Line (SAL)	<a href="mailto:sal@suffolk.edu">sal@suffolk.edu</a>
Student Performing Arts Program	<a href="mailto:suffolkarts@aol.com">suffolkarts@aol.com</a>
The Hub	<a href="mailto:thehub@suffolk.edu">thehub@suffolk.edu</a>
Theatre Department	<a href="mailto:dcurioso@suffolk.edu">dcurioso@suffolk.edu</a>
Undergraduate Admissions	<a href="mailto:admission@suffolk.edu">admission@suffolk.edu</a>
Visionaries Institute	<a href="mailto:institute@visionaries.org">institute@visionaries.org</a>





## EMAIL DIRECTORY

To load the directory on your computer do the following:

---

### For Netscape 4.x

Open Netscape Communicator

Once Communicator has loaded, click:

Communicator

Address Book

Once the address book window is open, click: ..

File

New Directory

A window will pop-up. Fill in the following information exactly as written below:

Description: suffolk\_list

LDAP Server: idigress.suffolk.edu

Search Root: o=suffolk university,c=US

Leave Port Number as it is

Change "Don't show more than 100 results" to be 900 results

Click OK

In the address book window just below your personal address book, there should be a line called suffolk\_list. Click on that to search. You can search for first name, last name or part of a name by typing in the box that says "Show names containing:"

Once you have found the person you are looking for, you can view his/her name, department, phone number and email by **double-clicking** on the name. You can also click and drag his/her information into your Personal Address Book.

For more advanced searches, click on the "Search for..." button in the address book window. With this option you can search on name, email, and department.

### **For Netscape 6.x**

Open Netscape

Select Edit

Preferences

Mail Newsgroups

Addressing

Go to Address Auto completion box

Edit Directories

Add

**Name:** Suffolk\_list

**Hostname:** idigress.Suffolk.edu

**Base DN:** O=suffolk university, C= US click 'OK'

In the Address AUTOCOMPLETION box click on

Directory Server

(make sure Suffolk\_list' appears)

In Netscape 6.x Advance search options are not available,  
Only AUTOCOMPLETION of addresses during  
Email Compose.

---

### **Email Address Names**

All Suffolk e-mail addresses are first initial of first name and than up to the first seven letters of the last name @ Suffolk.edu. Example: Fred Flinstone is fflinsto@suffolk.edu . However, if you want to use your full name you may do so by using a special utility, which allows the creation of a full name email alias@suffolk.edu. To access the utility open the web browser to:

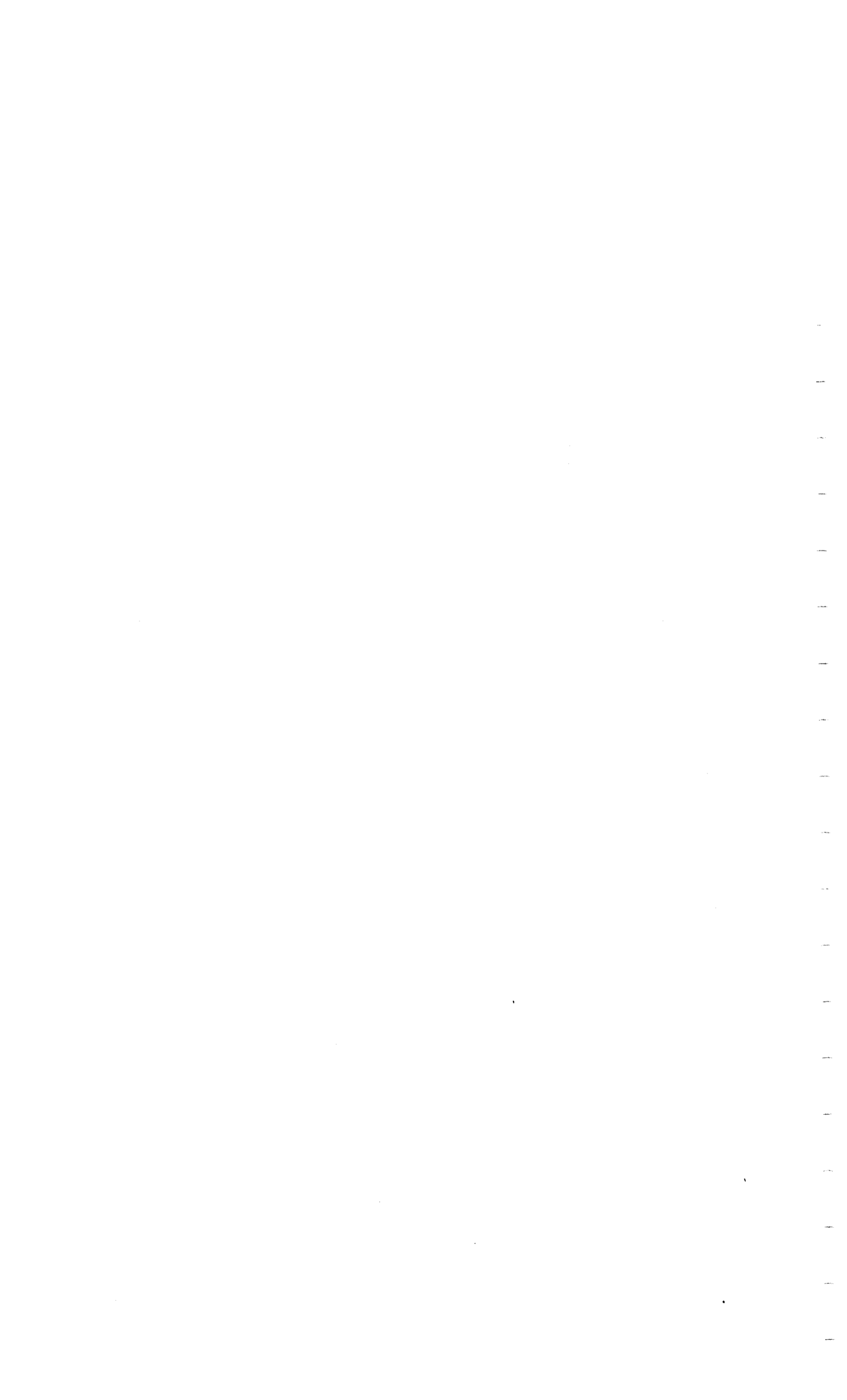
<http://acad.suffolk.edu/alias>

Instead of fflinsto@suffolk.edu your in-coming email address can be fred.flinstone@suffolk.edu.

**A reminder:** Inclusion in this online email directory does not mean that someone is a regular email user, only that s/he has been assigned an address by MIS.







**SUFFOLK UNIVERSITY  
DEPARTMENT LISTING**

**\*PLEASE NOTE:** If dialing from outside the University, use the 305- exchange for extensions beginning with 1, 2, 3 or 6 (for example, 305-1917); use 973- for extensions beginning with 5 (for example, 973-5300) and use 994- for extensions beginning with 4 (for example, 994-4034). Use the 573- exchange for all others. If dialing off-campus from an on-campus phone, you must dial 9 before the number.

**Emergency Phone Numbers**

<b>BOSTON FIRE DEPARTMENT</b>	Dial 9 then 911
<b>BOSTON POLICE</b>	Dial 9 then 911
<b>SUFFOLK POLICE</b>	Dial 8111 or 8333

**DEPARTMENT LISTING**

DEPARTMENT	EXT.	BLDG/RM	FACSIMILE #
Academic Computing, CAS	8165	D-5th	
Fenton Computer Lab	8619	F-234	
Ridgeway Computer Lab	8701	R-415	
Academic Technology, Law	8352	SGT-6th	(617) 305-3075
Accounting	8652	S-6th	(617) 573-8345
Admission			
Graduate	8302	CL-5th	(617) 523-0116
Law	8144	SGT-1st	(617) 523-1367
Undergraduate	8460	CL-3rd	(617) 742-4291
Advanced Legal Studies	8627	SGT-110	(617) 305-3099
Advancement	8443	B-25th	(617) 573-8711
Annual Funds	8443	B25th	(617) 573-8711
Corporate/Foundation Relations	8656	B-25th	(617) 573-8711
AIS	8429	B-25th	(617) 573-8711
Donor Relations	8451	B-25th	(617) 573-8711
Operations and Research	8443	B-25th	(617) 573-8711
Planned Giving	8443	B-25th	(617) 573-8711
School Based Fundraising, CAS	8643	B-25th	(617) 573-8711
School Based Fundraising, Law	6202	SGT	(617) 573-8151
School Based Fundraising, SSOM	8658	B-25th	(617) 573-8711
Vice President	8453	B-25th	(617) 765-7973
Alumni Relations, CAS	8456, 8457	B-25th	(617) 573-8711
Alumni Relations, International	1981	CL-7th	(617) 367-9438
Alumni Relations, SSOM	8522	B-25th	(617) 573-8711
Alumni Relations, Law	1999, 1904	SGT-160	(617) 573-8151
Archives	8510	S-B32	
Assistant Treasurer	8639	B-25th	(617) 248-3890
Comptroller	8630	B-25th	(617) 227-3150
Athletics	8379	R-205	(617) 227-4935
Sports Therapy Room	8772	R-2nd	
Ballotti Learning Center	8235	D-208	(617) 742-6761
Beacon Hill Institute	8750	BHI	(617) 720-4272
Biology	8246	A-501	(617) 573-8245
Adjunct Office	1983	A-562	
Bookstore			
CAS & SSOM	8218 or (617) 227-4085	R-1st	(617) 742-7213
Law School	6220 or (617) 227-8874	SGT-1st	(617) 227-9457

DEPARTMENT	EXT.	BLDG/RM	FACSIMILE #
Budget Office	8611, 8633	B-25th	(617) 248-3890
Business Law	8652	S-6th	(617) 573-8345
Business Office			
Accounts Payable	8404	B-25th	(617) 573-8256
Purchasing	8405	B-25th	(617) 573-8256
Business Manager	8403	B-25th	(617) 573-8256
Associate Business Manager	8406	B-25th	(617) 573-8256
Campus Ministry	8325	D-5th	(617) 248-3905
Cape Cod Programs			
2+2 Program	(508) 375-4083	CC	(508) 375-4071
Graduate Programs	(508) 375-4056	CC	
Career Services & Cooperative Education	8480, 8312	AP-1st	(617) 573-8752
Career Development, Law School	8148	SGT-120	(617) 573-8706
Center for International Education	1903	CL-6th	(617) 367-9438
Immigration Services/Advising	8154	CL-6th	(617) 367-9438
International Alumni Relations	1981	CL-7th	(617) 367-9438
International Student Programming	4221	CL-6th	(617) 367-9438
Study Abroad	8072	CL-6th	(617) 367-9438
Center For Mgt. Development, SSOM	8660	S-546	
Center For Restorative Justice, CAS	1991	T-42	(617) 720-0490
Chemistry	8250	A-621	(617) 573-8668
Club Allocations Board	8698	D-4th	
College of Arts & Sciences, Office of Dean	8265	D-1st	(617) 573-8513
	8267, 8570		(617) 305-6318
	8268		(617) 573-8577
Communication & Journalism	8236	R-407	(617) 742-6982
Computer Information Systems (CIS)	8331	S-760	(617) 573-8345
Computer Science	1917	F-621	(617) 573-8591
Master of Science (MSCS)	1917	F-621	(617) 573-8591
Copy Centers			
Law School, Internal	8725	SGT-666	
Allegra Printing		Off-Campus	
Sawyer Annex	8413 or	S-1st	(617) 523-7535
	(617) 523-3355		
Corporate Education	8784	CL-2nd	(617) 742-2651
Counseling Center	8226, 8227	R-305	(617) 227-3685
Creative Services, UMS	8032	A-481	(617) 742-5172
Dean College Program	(508) 541-1972	DC	(508) 541-1549
Dean of Students, CAS/SSOM	8239	R-3rd	(617) 742-2582
Dean of Students, Law	8157	SGT-4th	(617) 742-0246
Debating Society	8236	A-310	
Development (See Advancement)			
Dining Services			
Catering Office	6234	SGT-4th	(617) 305-6212
Donahue	8683	D-B	(617) 573-8107
Law	1690	SGT-4th	(617) 305-6212
Residence Hall	2511, 2509	RH-150	(617) 305-2508
Economics	8259	AP-2nd	(617) 994-4216
Education and Human Services	8261	F-2nd	(617) 722-9440
Electrical & Computer Engineering	8230	A-3rd	(617) 367-5063
Emergency (University Police)	8111, 8333		
English	8271	F-216	(617) 624-0157
Enrollment Research & Planning	8468	CL-4th	(617) 720-0970
Enrollment & Retention Mgt, Office of Dean	8647	CL-2nd	(617) 742-2651
ESA	8328	D-4th	
Executive MBA Program, SSOM	8660	S-4th	(617) 994-4239

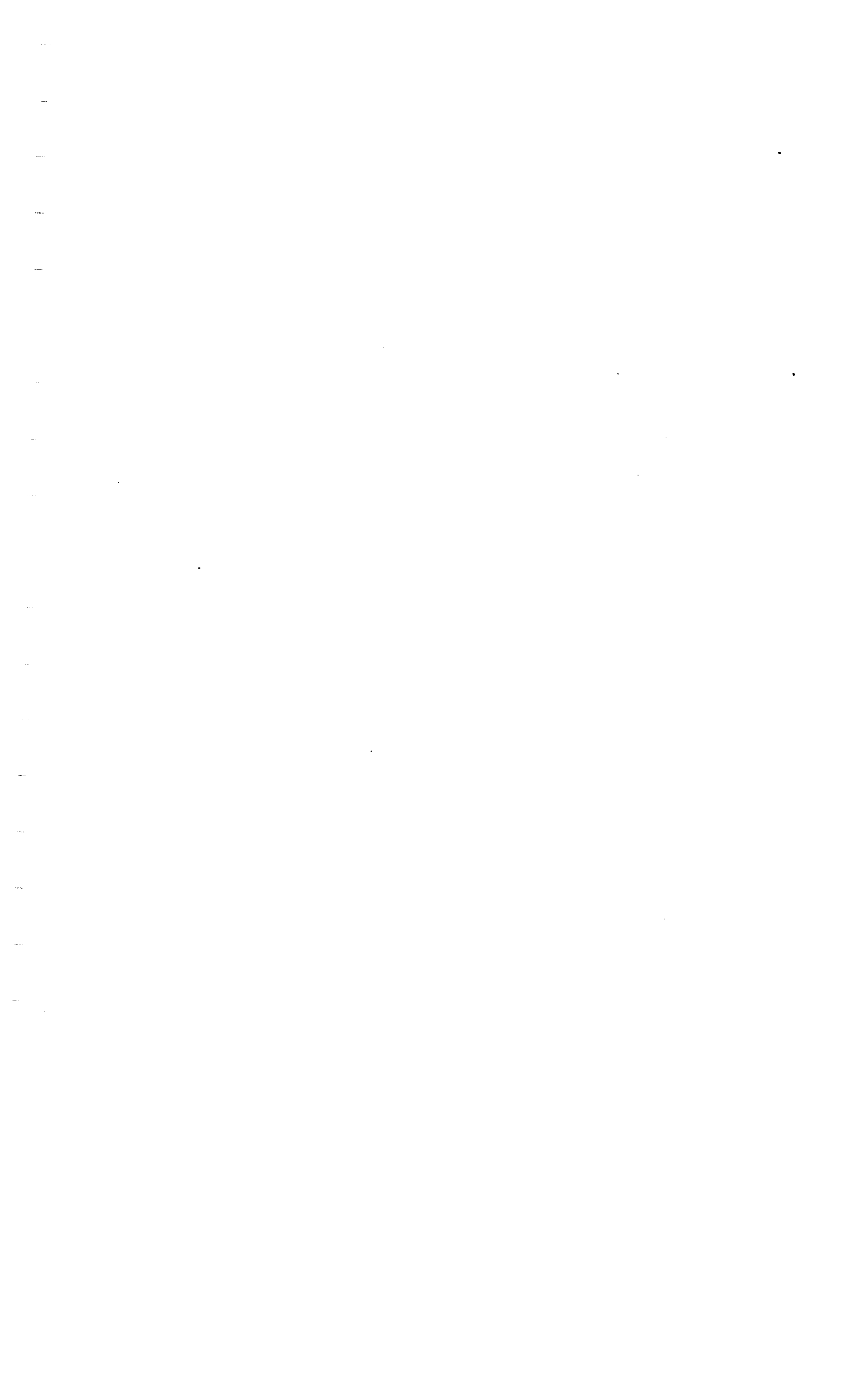
DEPARTMENT	EXT.	BLDG/RM	FACSIMILE #
Facilities Planning	8305	B-25th	(617) 248-3890
Finance	8396	S-9th	(617) 573-8345
Graduate Programs in Finance	8641	S-9th	(617) 367-9307
Financial Aid			
University	8470	D-1st	(617) 720-3579
Law School	8147	SGT-140	(617) 973-9869
Forensics Society	8236	R-403	
Friedman Field Station			
Director	8246		(617) 573-8245
Resident Dining Hall	(207) 726-4237	FFS	
Coordinator	(207) 726-4749	FFS	(207) 726-5835
Gear-Up	(617) 522-6606	Off-Campus	
Government	8122	D-5th	(617) 367-4623
Graduate Admission	8302	CL-5th	(617) 523-0116
Graduate Student Association	8328	D-4th	
Health Services	8260, 8360	F-104	(617) 367-9405
Emergency (University Police)	8111, 8333		
History	8116, 8117	B-25th	(617) 723-7255
Hub, The	4225	D-1	
Human Resources	8415	B-25th	(617) 367-2250
Humanities and Modern Languages	8285	F-503	(617) 367-5965
Language Lab	8385	F-530-1	
Foreign Language Assist/Tutoring	4258	F-546	
Slide Library	8257	F-509	
Law, Academic Support	8709	SGT-3rd	
Law, Advanced Legal Studies	8627	SGT-110	(617) 248-0648
Law, Budget Office	8081	SGT-425B	(617) 723-5109
Law, Career Development Office	8148	SGT-120	(617) 573-8706
Law, Clinical Programs	8100	SGT-190	(617) 742-2139
Battered Women Program	8100	SGT-190	(617) 742-2139
Center for Juvenile Justice	3200	JJC	(617) 451-2641
Internship Program	8049	SGT-165	(617) 305-6209
Suffolk Legal Services	(617) 884-7568	SULS	(617) 884-0595
Voluntary Defender/Prosecutor	8100	SGT-190	(617) 742-2139
Law Review	8180	SGT-430	(617) 723-5847
Law School, Office of Dean	8155	SGT-410	(617) 723-5109
Dean of Students, Law	8157	SGT-410	(617) 742-0246
Law, Support Services	8644	SGT-270C	(617) 573-8143
Library, Law	8177		
Director	8705	SGT-760J	
Moakley Archives	6255	SGT-515	
Reference Desk	8516	SGT-6th	
Reserve	8177	SGT-6th	(617) 723-3164, (617) 720-0853
Public Services	8774	SGT-760L	
Technical Services	8079, 1603	SGT-750	
Library, Sawyer	8535	S-231	(617) 573-8756
Circulation	8537	S-231	
Director	8536	S-231	
Periodicals	8414	S-131	
Reference	8532	S-230	
University Archives	8510	S-B32	
Lost and Found	8333, 8113	D-1st	

DEPARTMENT	EXT.	BLDG/RM	FACSIMILE #
Mail Services			
Donahue	8278	D-1st	
Sargent	1618	SGT-106	
Sawyer	8348	S-BA	
Management	8336	S-6th	(617) 573-8345
Management Information Systems	8421, 8422	B-25th/S-731	(617) 723-5354 (617) 573-8747
Macaronis Institute of Trial and Appellate Advocacy	8556	SGT-310B	
Marketing	8651	S-728	(617) 973-5382
Mathematics	8251	F-621	(617) 573-8591
Mathematics Support Center	8763	F-636	(617) 573-8591
MBA Program, SSOM	8306	S-826	(617) 573-8704
Medical Science Program	8663	A-341	(617) 367-5063
Merrimack College Program	1939 or (978) 837-5143		(978) 837-5472
Moot Court	8172	SGT-420	(617) 624-0121
Multicultural Affairs	8613, 8638	D-218	(617) 573-8458
New England School of Art & Design	8785	ARL-2nd	(617) 536-0461
Off-Campus Housing	8647	CL-2nd	(617) 742-2651
Office of President	8220	B-25th	(617) 573-8353
Multicultural Affairs	8613	D-209	(617) 573-8458
Online MBA Program	8372		(617) 723-0139
Payroll			(617) 227-3150
Monthly	8412	B-25th	
Weekly	8329	B-25th	
Bi-weekly	1950	B-25th	
Performing Arts Program	6307	D-5 <sup>th</sup>	(617) 248-3905
Philosophy	8399	A-1st	(617) 973-5323
Physical Plant	8110	A-183	(617) 994-4207
Physics	8663	A-341	(617) 367-5063
Police			
Donahue Dispatch Center	8333	D-1st	(617) 742-7854
Emergency Number	8111	D-1st	
Program Council	8697	D-4th	
Psychology	8293, 8367	D-6th	(617) 367-2924
Public Management	8330	S-10th	(617) 227-4618
Public Affairs	8447	B-25th	(617) 367-0903
Registrars Offices			
Colleges	8430	D-3rd	(617) 573-8703
Law	8160	SGT-130	(617) 723-6114
Residence Life	2500	RH-150	(617) 305-2504
Retention Services	8718, 8798	CL-2	(617) 742-2641
Right Question Project	(617) 492-1900	RQP	(617) 492-1950
Safety & Environmental Compliance	8628	A-183C	(617) 305-1723
Sawyer School of Management, Office of Dean			
Graduate Programs	8300	S-8th	(617) 573-8704
Undergraduate Programs	8088	S-8 <sup>th</sup>	(617) 573-8653
Administration	8301	S-8th	(617) 573-8704
Student Advising	8335	S-856	
Student Advising	8225	S-844	
Second Language Services	8677	AP-1st	(617) 624-0344
Sociology	8485, 8486	T-12	(617) 720-0490
M.S. Criminal Justice	1990	T-12	(617) 720-0490
Center for Restorative Justice	1991	T-12	(617) 720-0490

DEPARTMENT	EXT.	BLDG/RM	FACSIMILE #
S.O.U.L.S. Community Service Center	6306	D-4th	
Sports Information	8379	R-2nd	
Student Accounts/Bursar	8407	D-3rd	(617) 557-4399
Student Activities, Colleges	8320	D-5th	(617) 248-3905
Student Government Association (SGA)	8322	D-4th	
Student Organizations, Colleges (If not listed by name)	8320		
Student Organizations, Law School	8174, 8175		
Student Resource Center	8320	D-5th	
Students Services, Colleges, Office of Dean Dean	8239	R-3rd	(617) 742-2582
Suffolk Journal (Newspaper)	8323, 6331	D-4th	(617) 523-1646
Summer Programs	1965	RH-150	(617) 305-2504
Switchboard (see Voice Communications)			
Technology Management, SSOM Computing Lab	8524 8636	S-5th S-544	(617) 573-8704
Theatre, C. Walsh and Studio Administrative Office	8282	A-006	(617) 742-5024
Box Office	8680	Theatre	
Transnational Law Review	8610	SGT-440	
<b>University Media and Creative Services</b>			
Creative Services	8032	A-481	(617) 742-5172
Director	8167	B-25th	(617) 723-1632
Donahue Media Center	8168	D-215	(617) 573-8596
Enrollment Advertising	1937	B-25th	(617) 723-1632
Sawyer Media Center	8484	S-908	(617) 367-9461
Sergeant Media Center	1600	SGT-330	(617) 305-3072
Staff Assistant	1906	B-25th	(617) 723-1632
Web Services	1734	R-3rd	(617) 305-1737
Veterans' Benefits	8430	S-7th	
Venture Magazine	8068	D-4th	
Vice President/Treasurer	8400, 8401	B-25th	(617) 248-3890
Visionaries Institute (Full-time Programs)	(413) 229-0350	VI	
Visionaries Institute (Part-time programs)	4246	S-12	
Voice Communications	0 or 8010	S-1st	
Web Resource Center, CAS	1917	F-621	(617) 573-8591
Women's Center	8327	D-4th	
WSUB T.V.	8696	D-4th	
WSFR Radio	8324, 1907	D-4th	
Yearbook (Beacon)	8326	D-4th	









**Suffolk University**  
**Alpha Employee Listing**

<u>NAME</u>	<u>EXT</u>	<u>BLDG</u>	<u>RM</u>	<u>DEPARTMENT</u>	<u>TITLE</u>
Abrams, Barbara L.	8284	F	538	Humanities & Modern Languages	Asst Professor
Adams, Brian	8112	A	183	Physical Plant	Assoc Director
Agigian, Amy C.	8487	T	32A	Sociology	Asst Professor
Ajmani, Mandi L.	6361	D	6th	Psychology	Coordinator
Akstin, Cheryl A.	8230	A	301	Electrical & Computer Engineering	Staff Assistant
Albanese, Venus	8499	S	1st	Voice Communications	Campus Card Coord
Alexander, Shirley M.	6384	D	3rd	Registrar-Colleges	Records Coordinator
Allen, Jocelyn	8147	SGT	140E	Law Financial Aid	Director
Allison, Robert J.	8510	B	25th	History	Assoc Professor
Alterno, Wendy B.	8404	B	25th	Business Office	Clerical Asst
Alvarez, Pauline L.	8265	D	1st	Dean-CAS	Secretary
Anderson, Jay	8226	R	312	Counseling Center	Intern
Andrade, Paul	1701	ARL	2nd	NESAD	Instructor
Andrews, Charlene	1982	CL	6th	Enrollment & Retention Mgt.	Sr Admin Associate
Angelini, James P.	8361	S	635	Accounting	Assoc Professor
Anooshian, Mary K.	8399	A	1st	Philosophy	Staff Assistant
Appel, Rachel M.	8434	D	3rd	Registrar - Colleges	Registrar's Asst
Archdeacon, Susan F.	8155	SGT	410F	Law-Dean	Admin Associate
Aresco, Nicole M.	8407	D	3rd	Student Accounts/Bursar	Cashier
Arguinzoni, Wilma C.	8613	D	2nd	Office of the President	Assoc Director
Argyrole, Christopher	8449	S	6th	Finance	Clinical Asst Prof
Armstrong, Debora L.	8110	A	183	Physical Plant	Utility Helper
Armstrong, Robert	8110	A	183	Physical Plant	Main Mech
Arsenault, Neldy	8110	A	183	Physical Plant	Locksmith
Arthur, Michael B.	8357	S	629	Management	Professor
Artis-Jackson, Sharon	8613	D	2nd	Office of the President	Asst to President
Ash, Barbara L.	8280	F	336	Education & Human Services	Professor
Ash, Sabrina A.	1614	SGT	685D	Law Library	Cir/Pub Svcs Libr
Ashe, Marie	8086	SGT	260D	Law School Faculty	Professor
Atherton, Susan C.	8303	S	839	Dean-SSOM	Assoc Dean
Atkins, Christine D.	8287	F	554	Humanities & Modern Languages	Visiting Asst Prof
Atkinson, Joyce	8235	D	208	Ballotti Learning Center	Asst Director
Austin, Kevin P.	8348	S	BA	Mail Services	Clerk
Aversa, Jeanne M.	8460	CL	4th	Undergraduate Admission	Assoc Director
Avery, Michael A.	8551	SGT	308E	Law School Faculty	Assoc Professor
Aydim, Nizamettin	8206	S	727	Marketing	Assoc Professor
Ayeni, Olugbenga C.	8201	R	413	Communications & Journalism	Asst Professor
Bachi, Allison	8485	T	22A	Sociology	Secretary
Badger, James A.	3205	JJC		Juvenile Justice Center	Soc Wkr/Advocate
Baek, In-Mee	8376	AP	2nd	Economics	Assoc Professor
Baetzel, Rosetta M.	8160	SGT	130J	Law Registrar	Assoc Registrar
Bain, Agnes S.	8123	D	510	Government	Professor/Chair
Baker, Julie A.	8136	SGT	370A	Legal Practice Skills	Instructor
Baker, Robert L.	8186	SGT	240F	Law School Faculty	Professor
Baldassaro, Michael J.	8647	CL	2nd	Enrollment & Retention Mgt.	Staff Assistant
Baldwin, Leann L.	8268	D	1st	Dean-CAS	Admin Assistant
Bansavich, Linda-Ann	8160	SGT	130	Law Registrar	Registrar's Asst
Bardwell, Sandra S.	8088	S	827	Dean-SSOM	Admin Assistant
Barker, A. Tansu	8759	S	7th	Marketing	Visiting Professor
Barrett, James	6285	SGT	661B	Law Academic Technology	Manager/ Web Services
Barrett, John Sullivan	8780	BHI		Beacon Hill Institute	Research Economist
Barrett, Nicole A.	8627	SGT	110	Advanced Legal Studies	Staff Assistant
Barretti, Michael L.	8616	S	722	Marketing	Clinical Asst Prof
Barry, Dorothy J.	8407	D	3rd	Student Accounts/Bursar	Student Accts Rep
Barth, Courtney	8451	B	25th	Advancement	Dir/Donor Relations
Bartnick, Harry	4287	ARL	2nd	NESAD	Assoc Professor
Basseches, Michael	8528	D	6th	Psychology	Professor
Battillo, Kathryn M.	8453	B	25th	VP Advancement	Vice President
Beaudette, Deborah A.	6205	SGT	160H	Law-Dean	Dir/Coordinators

**Suffolk University  
Alpha Employee Listing**

<u>NAME</u>	<u>EXT</u>	<u>BLDG</u>	<u>RM</u>	<u>DEPARTMENT</u>	<u>TITLE</u>
Beaudette, Joseph G.	8333	D	1st	University Police	Security Officer
Beckerman-Rodau, Andrew	8557	SGT	340A	Law School Faculty	Professor
Beckworth, Ellen	1608	SGT	760G	Law Library	Legal Ref Librarian
Beinecke, Richard H.	8062	S	1060	Public Management	Assoc Prof/Chair
Bekken, Jon	8142	R	404	Communications & Journalism	Assoc Professor
Bellinger, Robert	8121	B	25th	History	Assoc Professor
Bellino, Joseph R.	8333	D	1st	University Police	Officer
Bennett, Rebekka E.	4243	CL	7th	Center for International Education	Alumni Rel Asst
Benson, Judy L.	8718	CL	2nd	Enrollment & Retention Mgt.	Prog Dir/Retention
Berg, John	8126	D	517	Government	Professor
Bergeron, Jennifer J.	8469	CL	6th	Center for International Education	Staff Assistant
Berman, Alisa	8301	S	837	Dean-SSOM	Admin Assistant
Berman, William L.	(617) 884-7568	SGT		Law School Faculty	Asst Clinical Prof
Berrios, Myriam M.	8160	SGT	130	Law Registrar	Registrar's Asst
Bezanson, Sarah	1601	SGT	750C	Law Library	Acquisition Asst
Bigelow, Blair	8290	F	326	English	Professor
Birmingham, Adam	8333	D	1st	University Police	Security Officer
Bishop, Carter	8534	SGT	250J	Law School Faculty	Professor
Bishop, Theresa	8302	CL	5th	Graduate Admission	Assoc Director
Blevins, Anne	8460	CL	4th	Undergraduate Admission	Assoc Director
Blodgett, Mark S.	8064	S	5th	Business Law	Assoc Professor
Blum, Karen M.	8216	SGT	280A	Law School Faculty	Professor
Blumenson, Eric D.	1967	SGT	320C	Law School Faculty	Professor
Bolt, Jane	8144	SGT	150D	Law Admission	Admission Asst
Bonvouloir, Susan M.	(508) 541-1972	DC		Enrollment & Retention Mgt.	Dir Enroll/Dean Prog
Boone, Gloria	8501	R	405	Communications & Journalism	Professor
Boston, Ron	1627	SGT	330	UMS	Coordinator
Boucicaut-Louis, Yvens	1611	SGT	625	Law Library	Library Asst
Bouffard, Todd	8658	B	25th	Advancement	Advancement Asst
Bourque, Corin K.	8333	D	1st	University Police	Security Officer
Bower, Beth Anne	6255	SGT	515	Moakley Archives	Archivist
Boyes-Watson, Carolyn	8085	T	33	Sociology	Assoc Professor
Boyle, Catherine J.	8537	S	2nd	Sawyer Library	Manager
Bramson, Ruth A.	1992	S	1046	Public Management	Asst Professor
Briggs, Warren G.	8368	S	762	CIS	Professor
Brown, Barry	8298	SGT	210H	Law School Faculty	Professor
Brown, Colleen A.	8074	SGT	370H	Legal Practice Skills	Instructor
Brown, Linda L.	4292	ARL	2nd	NESAD	Assoc Professor
Brown, Maureen	8333	D	1st	University Police	Crime Prev Officer
Brown, Michael C.	5371	S	646	Accounting	Staff Assistant
Brown, Micheal A.	8110	A	183	Physical Plant	Main Mech
Brown, Timothy M.	8235	D	208	Ballotti Learning Center	Staff Assistant
Brunelle, Ronald K.	8578	B	25th	Asst Treasurer Office	Sr Accountant
Brus, Mark	5391	ARL	2nd	NESAD	Asst Professor
Bryan, E. Lewis	1704	S	668	Accounting	Visiting Professor
Bryson, Dennis A.	8348	S	1st	Mail Services	Senior Mail Clerk
Buckingham, Richard L.	8605	SGT	760	Law Library	Legal Ref Librarian
Burgess, William A.	8249	A	506	Biology	Asst Professor
Burke, Mary P.	8128	D	515	Government	Asst Professor
Burn, Peter R.	8248	A	507	Biology	Professor
Bursik, Krisanne	8295	D	6th	Psychology	Professor
Busse, Wilma J.	8226	R	308	Counseling Center	Assoc Professor
Butler, Melanie	8218	R	1st	Bookstore-Colleges	Asst Manager
Bybee, Jane A.	1923	D	6th	Psychology	Asst Professor
Caffey, Walter F.	8647	CL	2nd	Enrollment & Retention Mgt.	Dean
Caffrey, Patricia A.	8660	S	4th	Executive MBA	Staff Assistant
Callahan, Stephen J.	8588	SGT	320D	Law School Faculty	Professor
Cambronne, Huguette	8333	D	1st	University Police	Security Officer
Camelio, Jessica N.	1605	SGT	750	Law Library	Sr Serials Asst

**Suffolk University**  
**Alpha Employee Listing**

<u>NAME</u>	<u>EXT</u>	<u>BLDG</u>	<u>RM</u>	<u>DEPARTMENT</u>	<u>TITLE</u>
Cammisa, Anne Marie	8130	D	514	Government	Assoc Professor
Campbell, Kerry	1904	SGT	160	Alumni Programs, Law	Director
Canales, Alisa R.	1906	B	25th	UMS	Staff Assistant
Caputo, Peter	8796	F	206	English	Assoc Professor
Carey, Megan E.	8075	SGT	750F	Law Library	Copy Cataloguer
Carlson, Patricia J.	8077	S	752	CIS	Assoc Professor
Carpenter, Kristen	8530	SGT	320I	Law School Faculty	Asst Professor
Carrabino, Courtney F.	8250	A	621	Chemistry	Staff Assistant
Carragee, Kevin M.	8768	R	402	Communications & Journalism	Assoc Professor
Carroll, Sarah M.	8015	F	332	Education & Human Services	Asst Professor
Castrillon, Jonathan	8110	A	183	Physical Plant	Utility Helper
Castrillon, Mario	8110	A	183	Physical Plant	Painter
Caulo, Ellen M.	8100	SGT	190	Law Clinical Programs	Dir/Vol Prosecutor
Cavallaro, Rosanna J.	8195	SGT	340D	Law School Faculty	Professor
Cavanagh, John C.	8119	B	25th	History	Professor
Cawthorne, Lori G.	8415	B	25th	Human Resources	Asst Director
Ceder, Linda J.	8147	SGT	140C	Law Financial Aid	Asst Director
Celovsky, Lisa A.	5397	F	117	English	Asst Professor
Chadwick, Sara	8785	ARL	2nd	NESAD	Dir/Admin Svcs
Chang, Lynn	8226	R	306	Counseling Center	Intern
Chen, Zhongyang	8659	S	662	Management	Vst Fulbright Scholar
Cheng, Wai Hing	1963	B	25th	Asst Treasurer Office	Sr Accountant
Chickering, Janice M.	8333	D	1st	University Police	Security Officer
Chin, Jennifer	8664	S	531	SSOM Technology Management	Assoc Director
Chin, Wayne	8282	A	6	Theatre Arts	Asst to Tech Dir
Chiofolo, Christopher	8178	SGT	750D	Law Library	Acquisitions Manager
Chisholm, Darlene C.	1932	AP	2nd	Economics	Assoc Professor
Christensen, Craig W.	8676	A	309	Electrical & Computer Engineering	Assoc Professor
Chu, Justina F.	8081	SGT	425B	Law-Dean	Budget Systems Coord
Ciuryla, Joseph V.	1927	A	662	Chemistry	Instructor
Clark, Alexis M.	8239	R	3rd	Dean Of Students Office	Coordinator
Clark, Gerard J.	8583	SGT	240C	Law School Faculty	Professor
Clark, Kelly M.	8522	B	7th	Advancement	Major Gifts Off/SSOM
Clarke, Karen	4293	ARL	2nd	NESAD	Asst Professor
Clinton, Regina E.	8407	D	3rd	Student Accounts/Bursar	Asc Bursr/Tech Supp
Codreanu, Sorin Cristian	8750	BHI		Beacon Hill Institute	Economist
Coffler, Gail H.	8275	F	209	English	Professor
Cohn, Donald L.	8232	F	637A	Math & Computer Science	Professor
Colafella, Shauna E.	5346	F	216	English	Secretary
Cole, Peter	5376	B	25th	MIS	Programmer/Analyst
Coles-Roby, Beverly R.	8157	SGT	410S	Law-Dean	Dean of Students
Comeau, George T.	1625	SGT	330	UMS	Managing Assoc Dir
Comeau, Richard A.	8110	A	183	Physical Plant	Main Mechanic
Comer, Joan	8191	SGT	270D	Law School Staff	Manager
Commons, Dorothy Brooks	8686	SGT	120N	Law Career Dvpt	Asst Director
Condon, Anne	1964	B	25th	Advancement	Coord Ldship Giving
Connell, Timothy P.	8484	S	908	UMS	Coordinator
Connelly, Louis	8379	R	413	Athletics	Dir/Sports Info
Connolly, Thomas F.	1918	F	205	English	Asst Professor
Connors, Elizabeth	8652	S	6th	Accounting	Asst Professor
Conte, Frank	8050	BHI		Beacon Hill Institute	Dir/Comm Info Sys
Cook, Edith	8621	F	405	Math & Computer Science	Assoc Professor
Cooper, Clarence A.	8370	S	1032	Public Management	Assoc Professor
Cooperman, Celeste	8674	F	553	Humanities & Modern Languages	Professor
Corbett, William T.	1683	SGT	280E	Law School Faculty	Professor
Counts, Angela M.	8320	D	529	Student Activities	Asst Director
Cove, Lorraine D.	8160	SGT	130H	Law Registrar	Registr Asst to Dean
Cramer, Charles	5348	F	504	Humanities & Modern Languages	Asst Profes
Cronin, Joseph D.	8547	SGT	210I	Law School Faculty	Professor

**Suffolk University  
Alpha Employee Listing**

<u>NAME</u>	<u>EXT</u>	<u>BLDG</u>	<u>RM</u>	<u>DEPARTMENT</u>	<u>TITLE</u>
Crowley, Sarah K.	8443	B	25th	Advancement	Asst Dir Annual Fund
Cullinane, Keri A.	8606	CL	6th	VP Advancement	Budget Assistant
Curran, Melissa A.	8160	SGT	130	Law Registrar	Staff Assistant
Curran, Paul	8333	D	1st	University Police	Corporal
Curry, Josiah J.	8333	D	1st	Physical Plant	Staff Assistant
Curtis, Gregory	8521	S	731	MIS	Sr Micro Specialist
Dahlborg, Lynne D.	8228	F	428	Education & Human Services	Assoc Professor
D'Angelo, Diane M.	8608	SGT	760H	Law Library	Sr Ref Librarian
Darrer, Cynthia J.	8352	SGT	655F	Law Academic Technology	Manager
Datta, Mai I.	8672	S	9th	Finance	Assoc Professor
Davidson, Patricia A.	8171	SGT	160C	Law Grad Program (LL.M.)	Dir/LLM Program
Davis, James L.	8333	D	1st	University Police	Corporal
Davis, Jennifer M.	8519	SGT	370D	Legal Practice Skills	Instructor
Davis, William	8785	ARL	2nd	NESAD	Assoc Prof/Chair
Davison, Elena	6286	SGT	661C	Law Academic Technology	Asst Manager/ Web Services
Dawkins, Dione	8260	F	1st	Health Services	Secretary
Day, Kate N.	8559	SGT	240D	Law School Faculty	Professor
Decilio, Karen M.	8508	B	25th	Public Affairs	Media Coordinator
Deddy, Natalie J.	6313	D	1st	Dean-CAS	Admin Associate
Dedeke, Adenekan A.	8311	S	764	CIS	Asst Professor
Deegan, Rory D.	8333	D	1st	University Police	Security Officer
Defilippi, Robert J.	8243	S	650	Management	Professor
Degloria, Paula A.	8662	B	25th	MIS	Sr Prog/Analyst
Delaine, Tahira	8278	D	1st	Mail Services	Asst Supervisor
Delaney, Ellen V.	1607	SGT	760E	Law Library	Legal Ref Librarian
Delaney, Paul A.	1729	S	S-B	Facilities Planning	Asst Director
De-La-Rosa, Ianka R.	8288	A	481	UMS	Graphic Designer
Delaunay, Christian	5366	S	651	Management	Visiting Asst Prof
Deliso, John	8155	SGT	410H	Law-Dean	Assoc Dean
Dellicicchi, Thomas P.	8529	D	5th	Academic Computing/CAS	Director
Deluca, Kelly	8434	D	3rd	Registrar-Colleges	Assoc Registrar
Demarco, Anthony	1641	SGT	190C	Juvenile Justice Center	Director
Demeo-Gay, Pamela	1950	B	25th	Payroll	Payroll Asst
Demir, Oktay	8520	A	343	Physics	Assoc Professor
Dennis, Marguerite	8440	CL	6th	Enrollment & Retention Mgt.	VP Enroll/Int'l Pro
Depeiza, Frederick	8333	D	1st	University Police	Security Officer
Depeiza, Lorraine C.	8460	CL	4th	Undergraduate Admission	Sr Admission Asst
Derival, Mackenzie	8333	D	1st	University Police	Security Officer
Destefano, Christopher	6307	D	5th	Dean Of Students Office	Asst to Dean/Sp Prog
DiBiase, Rosemarie	8483	F	416	Education & Human Services	Assoc Professor
Dibiasi, Christopher M.	8333	D	1st	University Police	Officer
Dibiasi, Philip	8333	D	1st	University Police	Sergeant
Didget, Carol E.	8108	SGT	370B	Legal Practice Skills	Instructor
Didriksson, Marjorie Sonia	8532	S	2nd	Sawyer Library	Sr Ref Librarian
Diguardia, Robert D.	8425	B	25th	MIS	Dir Admin Computing
Dillon, Sara A.	8105	SGT	260H	Law School Faculty	Assoc Professor
Dinon, Loretta A.	8407	D	3rd	Student Accounts/Bursar	Managing Assc Bursar
Diplacido, Melissa E.	8643	B	25th	Advancement	Advancement Asst
Dixon, Michael	6202	SGT	160	Advancement	Advancement Asst
Dobbins, Michelle Ann	1674	SGT	120H	Law Career Dvpt	Asst Director
Dodd, Victoria	8567	SGT	380G	Law School Faculty	Professor
Dodge, Jeanne A.	8763	F	636	Math & Computer Science	Dir/Math Support
Doherty, Gina	8352	SGT	655E	Law Academic Technology	Dir/PC Resources
Donarumo, Amanda T.	8422	S	731	MIS	Operations Tech
Donoghue, Susan	8456	B	25th	Alumni Programs, CAS	Alumni Rel Asst
Dooley, Maureen	8611	B	25th	Budget Office	Dir Univ Bdgt/Risk
Drain, Robert	8599	D	5th	Academic Computing/CAS	Manager
Driscoll, Ellen M.	8302	CL	5th	Graduate Admission	Assoc Director
Dufault, Richard	1675	SGT	120G	Law Career Dvpt	Coordinator

x.8156?

8792

**Suffolk University**  
**Alpha Employee Listing**

<u>NAME</u>	<u>EXT</u>	<u>BLDG</u>	<u>RM</u>	<u>DEPARTMENT</u>	<u>TITLE</u>
Dugan, Robert E.	8536	S	2nd	Sawyer Library	Director
Duggan, Michael B.	8468	CL	4th	Enroll Res/Plan	Director
Dujardin, Pierre	8719	S	653	Multi-Disciplinary Studies	Assoc Prof/Coord
Dumas, Colette	8753	S	664	Management	Assoc Professor
Dunn, Kristi L.	8470	D	1st	Financial Aid-Colleges	Assoc Director
Duong, Gina	8396	S	924	Finance	Staff Assistant
Durante, Nicole F.	8367	D	6th	Psychology	Secretary
Durham, Laura D.	8154	CL	6th	Center for International Education	Dir Immig Svcs
Dushku, Judith	8129	D	512	Government	Asc Prof/Dn/Ac Dir Dakar Cmp
Edgers, Elizabeth J.	8415	B	25th	Human Resources	Asst Director
Eichen, Marc A.	8479	SGT	661A	Law Academic Technology	Director
Eisenstat, Steven	8710	SGT	260B	Law School Faculty	Professor
Elias, Clifford E.	8170	SGT	310F	Law School Faculty	Professor
Ellis, Gail N.	8144	SGT	150D	Law Admission	Dean of Admission
Elmorsi, Miranda N.	8480	AP	1st	Career Services/Coop Education	Coordinator
Elysse, Sheila J.	8414	S	2nd	Sawyer Library	Periodicals Tech
Entin, Judith A.	8302	CL	5th	Graduate Admission	Manager
Eonas, Anthony G.	8362	S	5th	Business Law	Assoc Professor
Epps, Valerie C.	8562	SGT	380B	Law School Faculty	Professor
Eskedal, Glen	8264	F	242	Education & Human Services	Professor/Chair
Ezust, Paul	8601	F	625	Math & Computer Science	Professor/Chair
Fama, Janice	8485	T	12	Sociology	Staff Assistant
Fazzino, Lusiella	1606	SGT	760C	Law Library	Ref & Elec Svcs Libr
Feeley, Bernadette T.	8554	SGT	165B	Law Clinical Programs	Dir Internship Prog
Feeley, Michael L.	4242	B	25th	Facilities Planning	Project Counsel
Feeney, Donald J.	8725	SGT	666	Law School Staff	Duplicating Svc Spec
Feiring, Bruce R.	8356	S	656	Management	Assoc Professor
Feldman, Frank A.	8618	A	342	Physics	Professor
Felt, Jucimara E.	8164	SGT	310	Law School Staff	Secretary
Feltch III, Charles J.	8470	D	1st	Financial Aid-Colleges	Asst Director
Fenton, John	3027	SGT	310H	Law School Faculty	Distinguished Prof
Ferrari, Laura A.	8157	SGT	410T	Law-Dean	Asst Dean
Ferrey, Steven	8103	SGT	250G	Law School Faculty	Professor
Ferris, Melissa B.	8267	D	1st	Dean-CAS	Admin Assistant
Ferullo, Anthony D.	8448	B	25th	Public Affairs	Assoc Director
Ferullo, Karen	8285	F	506	Humanities & Modern Languages	Staff Assistant
Field, Lynda D.	8226	R	310	Counseling Center	Asst Professor
Fine, Nancy J.	8460	CL	4th	Undergraduate Admission	Managing Assoc Dir
Finn, Matthew J.	8282	A	6	Theatre Arts	Secretary
Finn, Thomas R.	8106	SGT	380A	Law School Faculty	Professor
Fisher, Amy	8352	D	5th	Campus Ministry	Campus Minister
Fisher, Keith R.	8169	SGT	380H	Law School Faculty	Assoc Professor
Fitzgerald, Margaret E.	8260	F	1st	Health Services	Nurse Practitioner
Fitzpatrick, Julie M.	8096	SGT	160	Law-Dean	Events Coordinator
Flaherty, Brian M.	8199	SGT	760F	Law Library	Sr Ref Librarian
Flaherty, Mary M.	1958	F	427	Education & Human Services	Assoc Professor
Flannery, Francis X.	8400	B	25th	Vice Pres-Treas Office	Vice Pres - Treas
Fleck, Paula	8791	D	3rd	Student Accounts/Bursar	Bursar
Flores, Evaristo A.	8110	A	183	Physical Plant	Main Mech
Flynn, John J.	1603	SGT	750B	Law Library	Ser/Bib Ctrl Lib
Flynn, Lawrence S.	1943	SGT	645A	Law Library	Comp Serv Spec
Foggarty, Patrice	8302	CL	5th	Graduate Admission	Manager
Foglia, Louis	8124	AP	2nd	Economics	Instructor
Foley, Amanda M.	8785	ARL	2nd	NESAD	Staff Assistant
Foley-Vinay, Linda A.	8677	AP	1st	Second Language Services	Director
Ford, Vicki	8246	A	501	Biology	Staff Assistant
Fortes, Mishell A.	3029	SGT	380	Law School Staff	Secretary
Fortess, Eric E.	8318	S	1038	Public Management	Assoc Professor
Foster, Brian G.	8110	A	183	Physical Plant	Main Mech

**Suffolk University  
Alpha Employee Listing**

<u>NAME</u>	<u>EXT</u>	<u>BLDG</u>	<u>RM</u>	<u>DEPARTMENT</u>	<u>TITLE</u>
Franco, Joseph A.	8152	SGT	240A	Law School Faculty	Assoc Professor
Frank, Jonathan	8617	S	763	CIS	Assoc Professor
Fratto, Marie J.	8180	SGT	430	Law Review	Secretary
French, Amy K.	6306	D	529	Student Activities	Asst Director
Freudenheim, Lisa R.	8563	SGT	370P	Legal Practice Skills	ASP Instructor
Freund, Steven	8794	S	9th	Finance	Asst Professor
Fuchel, Jennifer	4265	ARL	2nd	NESAD	Assoc Professor
Fuenmayor, Perla D.	8330	S	1045	Public Management	Admin Coordinator
Fuerman, Ross D.	8615	S	636	Accounting	Asst Professor
Fulweiler, Rebecca D.	8541	S	2nd	Sawyer Library	Asst Director
Gabriel, Elliot	8239	R	315	Dean Of Students Office	Assoc Dean
Gallant, David	1971	D	1st	Dean-CAS	PrgDir/UG Advising
Gansler, David A.	6397	D	6th	Psychology	Asst Professor
Garcia, Luis	1970	T	B7	Sociology	Asst Professor
Garni, Kenneth F.	8226	R	309	Counseling Center	Professor/Chair
Garzon, Henry	8110	A	183	Physical Plant	Main Mech
Garzon, Oswaldo	8110	A	183	Physical Plant	Main Mech
Gaskell, Susan	5328	F	420	Education & Human Services	Asst Professor
Gately, Melissa	8261	F	244	Education & Human Services	Staff Assistant
Gatherum, Beth E.	8627	SGT	110	Advanced Legal Studies	Staff Assistant
Geisler, Deborah M.	8504	R	403	Communications & Journalism	Assoc Professor
Gianakis, Jerry A.	8316	S	1047	Public Management	Assoc Professor
Giancola, Donna M.	8258	A	1st	Philosophy	Assoc Professor
Gianetta, Michael D.	8537	S	2nd	Sawyer Library	Evening Supervisor
Gibson, Stephanie D.	5379	B	25th	Facilities Planning	Admin Assistant
Giordano, Christopher M.	8239	R	314	Dean Of Students Office	Asst Dean
Giuliano, Charles	4283	ARL	2nd	NESAD	Instructor
Glannon, Joseph W.	8188	SGT	380C	Law School Faculty	Professor
Glover, Felecia D.	8429	B	25th	Advancement	Gifts Processor
Goguen, Dianne	8470	D	1st	Financial Aid-Colleges	Assoc Director
Golann, Dwight	8183	SGT	340F	Law School Faculty	Professor
Goldberg, Sara L.	8172	SGT	420	Moot Court	Staff Assistant
Goldman, Kristen	8785	ARL	2nd	NESAD	Staff Assistant
Goldstein, Amy R.	8092	SGT	120J	Law Career Dvpt	Asst Director
Goldstein, Audrey	4290	ARL	2nd	NESAD	Assoc Professor
Golly, Laura	4267	ARL	2nd	NESAD	Assoc Professor
Gomes, Andy	6221	SGT	1st	Bookstore-Law	Manager
Gonzales, Susan J.	8302	CL	5th	Graduate Admission	Admission Asst
Gonzalez, Diana F.	1618	SGT	106	Mail Services	Supervisor
Gonzalez, Jose Antonio	8352	SGT	655G	Law Academic Technology	Computing Assistant
Good Jr., William E.	8250	A	612	Chemistry	Professor
Goodman, Harold F.	8600	A	510	Biology	Instructor
Goodwin, Heather B.	8261	F	244	Education & Human Services	Secretary
Gopinath, C.	1934	S	648	Management	Assoc Professor
Gordon, Dahlia	8524	S	525	SSOM Technology Management	PC Specialist
Gottlieb, Erich	8235	D	208	Ballotti Learning Center	Consultant
Gracia, Shannon E.	8260	F	1st	Health Services	Coordinator
Graham, Lorie	3025	SGT	340I	Law School Faculty	Assoc Professor
Grande, Gregory M.	8333	D	1st	University Police	Operations Officer
Grathwol, Kathleen B.	1919	F	328	English	Asst Professor
Greenbaum, Marc	8369	SGT	320F	Law School Faculty	Professor
Greenberg, Kenneth S.	8527	B	25th	History	Assc Dean/Prof Chair
Greenwald, Louis R.	8460	CL	3rd	Undergraduate Admission	Asst Director
Gregg, Richard H.	(413) 229-0350	VI		Visionaries Institute	Exec Director
Griffin, Geraldine	3026	SGT	370J	Legal Practice Skills	Instructor
Griffith, Stacey M.	8285	F	503	Humanities & Modern Languages	Secretary
Grover, Lauren M.	1903	CL	6th	Center for International Education	Admin Coordinator
Guilar, Joshua	8767	R	410	Communications & Journalism	Assoc Professor
Gundlach, Jennifer A.	8100	SGT	190	Law School Faculty	Asst Clinical Prof



**Suffolk University**  
**Alpha Employee Listing**

<u>NAME</u>	<u>EXT</u>	<u>BLDG</u>	<u>RM</u>	<u>DEPARTMENT</u>	<u>TITLE</u>
Guo, Lin	8388	S	6th	Finance	Asst Professor
Gutierrez, Cecy C.	3200	JJC		Juvenile Justice Center	Staff Assistant
Hagg, Christine L.	8080	A	481	UMS	Graphic Designer
Hajj, Jack P.	8233	F	516	Math & Computer Science	Professor
Hallberg, Lillian M.	8306	S	824	MBA Programs	Asst Dean
Hamilton, Ellen	8159	SGT	410A	Law-Dean	Receptionist
Hamm, Patricia H.	1928	A	613	Chemistry	Visiting Asst Prof
Han, Ki C.	8561	S	9th	Finance	Professor/Chair
Hanlon, Martha	1914	B	25th	Advancement	Sr Dir/Operations & Res
Harkins, Debra	1926	D	6th	Psychology	Assoc Professor
Harris, Calvin E.	8133	D	519	Government	Asst Professor
Harris, Gregory E.	8404	B	25th	Business Office	Assoc Business Mgr
Hartman, Paula A.	8427	S	2nd	Sawyer Library	Library Asst
Haughton, Jonathan	8127	AP	2nd	Economics	Assoc Professor
Hawke, Alison K.	8069	AP	2nd	Economics	Assoc Professor
Healy, Elisabeth H.	8699	SGT	370C	Legal Practice Skills	Instructor
Hegarty, Ruth	8236	R	407	Communications & Journalism	Secretary
Henebury, Mark	8110	A	183	Physical Plant	Director
Herman, Peter C.	8785	ARL	2nd	NESAD	Asst Program Dir
Hernandez, Darwin O.	8333	D	1st	University Police	Sergeant
Hernandez, Maribel	8460	CL	3rd	Undergraduate Admission	Admissions Coord
Hicks, Stephen C.	8381	SGT	280D	Law School Faculty	Professor
Hidell, Tricia	4246	S	12th	Visionaries Institute	Coordinator
Higgins, Paula S.	8157	SGT	410J	Law-Dean	Admin Assistant
Hill, Mary	8307	S	8th	Dean-SSOM	Secretary
Hinds, Dawn S.	8633	B	25th	Budget Office	Insurance Coord
Hing, Sidarith B.	8333	D	1st	University Police	Officer
Hinnawi, Youmna H.	8072	CL	7th	Center for International Education	Dir Study Abroad
Hogan, Julie Ann	1602	SGT	750C	Law Library	Sr Acq Assistant
Holbrook, Gloria A.	8260	F	1st	Health Services	Nurse Practitioner
Holland, Ann Marie	8412	B	25th	Payroll	Manager
Holley, John C.	8496	T	11B	Sociology	Assoc Professor
Hom, Vincent M.	8708	S	731	MIS	Asst Dir/Computer Op
Honda, Leighton N.	1610	SGT	625	Law Library	Evening Supervisor
Hoover, Curtis W.	2500	RH	150	Residence Life	Assoc Director
Howard, Lionel	8166	D	208A	Ballotti Learning Center	Consultant
Hunt II, Cecil Jerome	8182	SGT	260F	Law School Faculty	Assoc Professor
Hunt, Neil G.	1939	S	642	Management	Visiting Asst Prof
Iacobucci, Rocco	8333	D	1st	University Police	Security Officer
Iebba, Antonietta	8407	D	3rd	Student Accounts/Bursar	Accounts Rec Mgr
Ilin, Mikhail B.	8331	S	760	CIS	Staff Assistant
Irwin Jr., John J.	8556	SGT	310B	Macaronis Institute	Dir/Macaronis Inst
Jackson, Eric A.	8435	D	3rd	Registrar-Colleges	Assistant Registrar
Jackson, Kathryn	8226	R	312	Counseling Center	Assistant Professor
Jaggia, Sanjiv	8023	AP	2nd	Economics	Professor
James Leyva, Susan G.	8647	CL	2nd	Enrollment & Retention Mgt.	Admin Associate
Jarvis, Edward	8371	S	1221	Management	Clinical Professor
John, Suzanne	8785	ARL	2nd	NESAD	Dir/Inst & Acad Svcs
Johnsen, Melissa W.	8139	SGT	370I	Legal Practice Skills	Instructor
Johnson Jr., Walter H.	8602	A	304	Physics	Professor/Chair
Johnson, Tyrone	8333	D	1st	University Police	Corporal
Jordan, Paula	1604	SGT	750A	Law Library	Serials Assistant
Joseph, Joanne	8155	SGT	410A	Law-Dean	Reception Serv Coord
Josephson, Sara D.	8785	ARL	2nd	NESAD	Program Assistant
Joyce, Phyllis A.	8401	B	25th	Vice Pres-Treas Office	Sr Admin Associate
Judge, Catherine T.	8187	SGT	310G	Law School Faculty	Professor
Jurich, Marilyn	8273	F	327	English	Assoc Professor
Kahn, Beverly	8642	S	755	CIS	Assoc Prof
Kalia, Aman	8333	D	1st	University Police	Security Of

**Suffolk University  
Alpha Employee Listing**

<u>NAME</u>	<u>EXT</u>	<u>BLDG</u>	<u>RM</u>	<u>DEPARTMENT</u>	<u>TITLE</u>
Kane, Stephen A.	5365	S	6th	Finance	Asst Professor
Kaplan, Edith	1922	D	6th	Psychology	Professor
Kaplan, Philip	8212	SGT	370G	Legal Practice Skills	Instructor
Karalekas, Lisa	8224	SGT	240	Law School Staff	Secretary
Karns, Vicki L.	5308	R	401	Communications & Journalism	Assoc Professor
Katz, Harvey A.	8294	D	6th	Psychology	Professor
Kaufman, James A.	5351	A	6	Theatre Arts	General Manager
Keaney, Lisa Z.	8045	B	25th	Advancement	Sr AIS Officer
Keefe, Susan	8116	B	25th	History	Staff Assistant
Keenan Jr., Bernard V.	8157	SGT	425H	Law-Dean	Assoc Dean
Kelleher, Nancy	1909	B	25th	Public Affairs	Consultant
Kelton, R. Harrison	8724	F	536	Humanities & Modern Languages	Assoc Professor
Kennedy, Joseph	8305	B	25th	Facilities Planning	Dir/Fac Planning
Keren, Steven Y.	8034	SGT	685	Law Library	Reference Assistant
Khaksari, Shahriar	8366	S	856	Finance	Asc Dean/Professor
Kiesel, Dina J.	1941	S	826	MBA Programs	Program Assistant
Kindregan, Charles P.	8193	SGT	240E	Law School Faculty	Professor
Kinney, Brett H.	8147	SGT	140F	Law Financial Aid	Systems Coordinatr
Kleinschnittger, Mark J.	8144	SGT	150D	Law Admissions	Adm E-Svcs Coord
Klian, Aykaz	8333	D	1st	University Police	Officer
Knowles, Matthew E.	8333	D	1st	University Police	Security Officer
Koch, Ellen E.	8405	B	25th	Business Office	Purchasing Coordinatr
Kolb, Amy	6264	SGT	120D	Law Career Dvpt	Counselor
Korn, Paul R.	8226	R	307	Counseling Center	Professor
Kurian, Tija A.	8750	BHI		Beacon Hill Institute	Economist
Kurtz, Sharon R.	8488	T	32B	Sociology	Assoc Professor
Ladd, Paul F.	8423	B	25th	MIS	Director
Lafauci, Janine M.	8131	SGT	260	Law School Staff	Secretary
Lally, Mary M.	8436	D	3rd	Registrar-Colleges	Registrar
Landers, Renee M.	1686	SGT	380J	Law School Faculty	Assoc Professor
Landry, Katherine	1654	SGT	110C	Advanced Legal Studies	Asst Director
Landry, Mary A.	8236	R	407	Communications & Journalism	Staff Assistant
Landsman, Stephan	8572	SGT	210C	Law School Faculty	Dist Visiting Prof
Langdon, Geoffrey M.	1702	ARL	2nd	NESAD	Asst Professor
Lavin, Michael T.	8317	S	1026	Public Management	Asst Dean CC/Asc Prof
Lavita, Danielle M.	8350	SGT	250	Law School Staff	Secret
Lawrence, Danette J.	3203	JJC		Juvenile Justice Center	Soc Wkr/Advocate
Lee, Denis	8442	S	1024	CIS	Professor
Lee, Roger	8415	B	25th	Human Resources	Human Resources Asst
Legaspi, Exxon N.	8333	D	1st	University Police	Officer
Lemay, Michelle Ann	8470	D	1st	Financial Aid-Colleges	Assoc Director
Lemelman, Herbert	8208	SGT	310I	Law School Faculty	Professor
Lenzie, Sharon	5372	B	25th	History	Admin Assistant
Leo, Elaine	8160	SGT	130	Law Registrar	Registrar's Asst
Leonard, Kim M.	8641	S	9th	Finance	Program Assistant
Lerman, Myra	8624	S	838	Dean-SSOM	Asst Dean
Levesque, Laurie L.	8389	S	6th	Management	Asst Professor
Lewandowski, Glen A.	8281	F	334	Education & Human Services	Professor
Lewis, Annestine	8198	SGT	320	Law School Staff	Secretary
Lewis, Doris I.	8546	A	603A	Chemistry	Professor/Chair
Lewis, Sylvia D.	8330	S	1042	Public Management	Staff Assistant
Lewis-Bowen, Erica S.	8302	CL	5th	Graduate Admission	Adm Sys Coord
Leyva, Viviana M.	8460	CL	3rd	Undergraduate Admission	Admission Asst
Leyva-Hernandez, Melba	8677	AP	1st	Second Language Services	Program Assistant
Libbares, Georgia A.	8570	D	1st	Dean-CAS	Admin Assistant
Limone, Richard	8574	D	5th	Academic Computing/CAS	PC Specialist
LoCicero, Alice	8017	D	6th	Psychology	Visiting Asst Prof
Logan, Helen	8147	SGT	140D	Law Financial Aid	Asst Director
Lombardo, Angela M.	1995	A	344	Physics	Coord Rad/Therapy

**Suffolk University**  
**Alpha Employee Listing**

<u>NAME</u>	<u>EXT</u>	<u>BLDG</u>	<u>RM</u>	<u>DEPARTMENT</u>	<u>TITLE</u>
Lopez, Nohara E.	8433	D	3rd	Registrar-Colleges	Registrar's Asst
Loprete, Amy	8148	SGT	120	Law Career Dvpt	Career Resource Asst
Lowe, Anthony J.	8110	A	183	Physical Plant	Utility Helper
Luke, Joan	8100	SGT	190	Law Clinical Programs	Staff Assistant
Lungelow, Brandy T.	8470	D	1st	Financial Aid-Colleges	Financial Aid Asst
Lust, Tami R.	8147	SGT	140F	Law Financial Aid	Coordinator
Luu, Danny T.	8407	D	3rd	Student Accounts/Bursar	Student Accts Rep
Lynch, Helen Alberta	8346	SGT	280	Law School Staff	Secretary
MacDonald, Anne E.	1734	R	302	UMS	Web Services Manager
Macfail, Deborah L.	6202	SGT	160F	Development	Dir Development/ Law
Machettira, Praneeth P.	5373	S	530	SSOM Technology Management	E-Lrng Web Analyst
Madden, Gerald P.	4276	S		Finance	Visiting Assoc Prof
Maggio, Carol T.	8379	R	204	Athletics	Secretary
Mahar, Tara E.	1913	CL	4th	Enroll Res/Plan	Assoc Director
Maher, Christine M.	5383	S	1142	On-Line MBA	Asst Director
Mahoney, Lauren	8225	S	844	Dean-SSOM	PrgDir/UG Advising
Mahoney, Sheila M.	1993	F	335	Education & Human Services	Assoc Professor
Mahoney, William J.	8523	S	731	MIS	Asst Director
Maio, Kathleen L.	8532	S	2nd	Sawyer Library	Asst Director
Malionek, Theresa	8631	S	860	Dean-SSOM	Dir/Comm/Sp Events
Malvo-Rodriguez, Denise	8652	S	631	Accounting	Staff Assistant
Mambula, Charles J.	8330	S	6TH	Management	Asst Professor
Mana, Jafar	5375	S	761	CIS	Clinical Asst Prof
Mandl, Bette	8277	F	228	English	Professor
Manning, Geraldine A.	8694	T	21	Sociology	Assoc Professor
Marchant, Frederick	8053	F	329	English	Professor
Marko, Jonathan D.	8385	F	530	Humanities & Modern Languages	Instructor
Marks, Anthony P.	8333	D	1st	University Police	Security Officer
Marosek, Wallace	4266	ARL	2nd	NESAD	Visiting Asst Prof
Martin, Angela F.	8460	CL	3rd	Undergraduate Admission	Admission Asst
Martin, Bernice M.	8247	A	568	Biology	Asst Professor
Martin, Lydia	4288	ARL	2nd	NESAD	Assoc Professor
Martinez, Leon J.	8785	ARL	2nd	NESAD	Receptionist
Matava, Marie A.	8024	S	1043	Public Management	Admin Coordinator
Mathews, Rebecca A.	1912	CL	4th	Enroll Res/Plan	Asst Director
Matson, Kate	8149	SGT	120	Law Career Dvpt	Career Resource Asst
Matthews, Bryan J.	8333	D	1st	University Police	Officer
Mazen, Magid	8623	S	660	Management	Professor
Mazziotta, Michael R.	8628	A	183C	University Safety Office	Univ Safety Officer
McCabe, Catherine Ann	5381	S	721	Marketing	Asst Professor
McCarthy, Joseph M.	8262	F	417	Education & Human Services	Professor
McCarthy, Sheila A.	8226	R	305	Counseling Center	Office Coordinator
McCartney, Michael J.	8333	D	1st	University Police	Officer
McConnell, Cary	8379	R	203	Athletics	Assoc Director
McCoy, John D.	8449	S	633	Multi-Disciplinary Studies	Asst Professor
McDermott, Brian J.	8110	A	183	Physical Plant	Asst Director
McDowell, Elizabeth	8480	AP	1st	Career Services/Coop Education	Assoc Director
McEachern, Andrea N.	8100	SGT	190	Law Clinical Programs	Secretary
McEttrick, Joseph P.	8181	SGT	210F	Law School Faculty	Professor
McEwen, Ruth A.	8511	S	670	Accounting	Professor
McGonigle Santos, Ann T.	8558	SGT	370E	Legal Practice Skills	Instructor
McGuire, Reynold L.	4277	S	7th	MIS	Network/Web Analyst
McHugh, Daniel	8320	D	529	Student Activities	Assoc Director
McInnes, James M.	8339	S	639	Accounting	Professor/Chair
McJohn, Stephen M.	8549	SGT	340C	Law School Faculty	Professor
McKenna, Christina	8237	R	300	Communications & Journalism	Visiting Asst Prof
McKenzie, Elizabeth	8705	SGT	760J	Law Library	Director
McKetchnie, Karen A.	8235	D	208	Ballotti Learning Center	Manager
McKinley, Marlene M.	8629	F	226	English	Professor

**Suffolk University  
Alpha Employee Listing**

<u>NAME</u>	<u>EXT</u>	<u>BLDG</u>	<u>RM</u>	<u>DEPARTMENT</u>	<u>TITLE</u>
McLaughlin, Patricia	8157	SGT	410I	Law-Dean	Admin Assistant
McLaughlin, Robyn M.	8378	S	9th	Finance	Assoc Professor
McMillen, Elissa L.	6264	SGT	120D	Law Career Dvpt	Counselor
McNamara, Margaret	8390	B	25th	Advancement	Dir/Found & Corp
McQuaid, Peter	8480	AP	1st	Career Services/Coop Education	Dir/Coop Ed
Medina, Carol	1705	S	8th	Dean-SSOM	Secretary
Medina, Dawn Marie	8407	D	3rd	Student Accounts/Bursar	Assistant Bursar
Medina, Sarah P.	8032	A	481	UMS	Pub Project Mgr
Medoff, David	8540	F	330B	Education & Human Services	Asst Professor
Mejia, Johanny	1618	SGT	106	Mail Services	Senior Mail Clerk
Mejia, Yeuris J.	8404	B	25th	Business Office	Accts Payable Asst
Melendez, Iris	8460	CL	4th	Undergraduate Admission	Admission Asst
Mello, Babette M.	8550	SGT	210	Law School Staff	Secretary
Membreno, Gabriel	8110	A	183	Physical Plant	Main Mech
Menchini, Ian A.	8144	SGT	150D	Law Admissions	Asst Director
Menz, James C.	8333	D	1st	University Police	Corporal
Merrill III, Carl L.	8398	A	542	Biology	Assoc Professor
Merzlak, Anthony G.	8291	F	535	English	Professor/Chair
Meyers, Aeri J.	8758	D	3rd	Registrar-Colleges	Assoc Registrar
Miliora, Maria T.	8252	A	622	Chemistry	Prof
Miller, Daniel Q.	8289	F	119	English	Asst Professor
Miller, Joyce	8429	B	25th	Advancement	Manager/AIS
Miller, Marc D.	8196	SGT	410R	Law-Dean	Dir Finance & Budget
Millner, Stuart A.	8274	F	218	English	Professor
Minardi, Judith Ann	8415	B	25th	Human Resources	Director
Moes, Elisabeth J.	6396	D	6th	Psychology	Asst Professor
Mohtadi-Haghigh, Shahruz	8670	AP	2nd	Economics	Assoc Professor
Monette Jr., Pierre F.	3202	JJC		Juvenile Justice Center	Clinical Sup/Atty
Montrym, Kelly R.	8460	CL	4th	Undergraduate Admission	Asst Director
Montville, Bruce	8110	A	183	Physical Plant	Main Mech
Moore, Brian	8235	D	208	Ballotti Learning Center	Asst Director
Moppett, Samantha A.	8135	SGT	370K	Legal Practice Skills	Instructor
Moquete, Edward A.	8333	D	1st	University Police	Officer
Moran, Jennifer	8226	R	306	Counseling Center	Intern
Morehouse, Marilyn	8644	SGT	270C	Law School Staff	Dir/Admin & Sup Serv
Morford, Juleen M.	8154	CL	6th	Center for International Education	Intern
Morgan, Sheneka A.	8415	B	25th	Human Resources	Secretary
Moriearty, Perry L.	3204	JJC		Juvenile Justice Center	Clinical Sup/Atty
Morton, Donald R.	8494	T	22B	Sociology	Assoc Professor
Morton, Jeanne	8235	D	208	Ballotti Learning Center	Assoc Director
Moryl, Rebecca L.	8387	BHI		Beacon Hill Institute	Dir Operations
Mosher, William	(413) 229-0350	VI		Visionaries Institute	President
Mueller, Annamaria M.	1999	SGT	160	Alumni Programs, LAW	Alumni Rel Asst
Mulcahy, Henry L.	8622	A	549	Biology	Professor
Mulherin, Andrew J.	8063	S	2nd	Sawyer Library	A & C Technician
Mulherin, Catherine M.	8424	B	25th	MIS	Programmer/Analyst
Murg, Corina I.	8750	BHI		Beacon Hill Institute	Economist
Murphy, Colleen A.	1676	SGT	120M	Law Career Dvpt	Counselor
Murphy, Russell G.	8052	SGT	260C	Law School Faculty	Professor
Murray, Brendan P.	8352	SGT	6th	Law Academic Technology	Acad Computing Spec
Muzere, Mark	8396	S	9th	Finance	Asst Professor
Myrvaagnes, Eric R.	8231	F	404	Math & Computer Science	Professor
Nazzaro, Linda J.	8784	CL	2nd	Corporate Education	Assoc Director
Neenan, Jean E.	8457	B	25th	Alumni Programs, CAS	Director
Nelson, James E.	8379	R	205	Athletics	Director
Nelson, Teresa E.	8338	S	527	SSOM Technology Management	Acting Director
Newton, John M.	1940	S	725	Marketing	Clinical Asst Prof
Nguyen, Dung T.	4237	B	25th	Business Office	Manager
Nichter, Susan	4286	ARL	2nd	NESAD	Assoc Professor

**Suffolk University**  
**Alpha Employee Listing**

<u>NAME</u>	<u>EXT</u>	<u>BLDG</u>	<u>RM</u>	<u>DEPARTMENT</u>	<u>TITLE</u>
Nicolas, Jonane	1611	SGT	625	Law Library	Library Asst
Noga, Tracy J.	8652	S	6th	Accounting	Asst Professor
Nolan, Joseph R.	8137	SGT	310D	Law School Faculty	Professor
Norris, Mariellen	8450	B	25th	Public Affairs	Consultant
North, Melanie A.	1612	SGT	625	Law Library	Library Asst
Norton Hawk, Maurteen	8491	T	11A	Sociology	Assoc Professor
Novick, Steve	4285	ARL	2nd	NESAD	Asst Professor
Nowak, Peter J.	8660	S	4th	Executive MBA	Dir/Exec MBA
Nucci, John	8330	CC		Public Management	Instructor
Nunez, Ramon	8333	D	1st	University Police	Sergeant
O'Brant, Natasha	8565	A	308	Electrical & Computer Engineering	Assoc Professor
O'Brien, Helen A.	8335	S	859	Dean-SSOM	Dir/Adm & Budget
O'Brien, Sean G.	8333	D	1st	University Police	Officer
O'Callaghan, John J.	8125	D	513	Government	Assoc Professor
O'Donnell, Mary	8235	D	208	Ballotti Learning Center	Asst Director
O'Gara, Christopher R.	8110	A	183	Physical Plant	Utility Helper
O'Hanlon, Patrick J.	1600	SGT	330	UMS	Coordinator
O'Hara, Henry T.	8340	S	935	Finance	Assoc Professor
Oliver, Janet	8677	AP	1st	Second Language Services	Coordinator/SLS
Olukotun, Alade	8110	A	183	Physical Plant	Main Mechanic
O'Neill, Regina M.	8393	S	652	Management	Assoc Professor
O'Neill, William J.	8665	S	8th	Dean-SSOM	Dean
Ong, Trong	8333	D	1st	University Police	Officer
Ornstein, Suzyn	8374	S	628	Management	Assoc Prof/Chair
Ortwein, Bernard M.	8590	SGT	280F	Law School Faculty	Professor
Outwater, Dennis L.	8238	A	1st	Philosophy	Professor
Owen, Maureen	2500	RH	150	Residence Life	Director
Pagliarulo, John	8115	S	A17	University Police	Chief
Pagliarulo, Marie E.	8329	B	25th	Payroll	Payroll Asst
Palmer, Tracey	8098	A	481	UMS	Writer/Editor
Pant, Laurie W.	8394	S	637	Accounting	Professor
Papantones, Karianne	8144	SGT	150D	Law Admission	Asst Director
Parham, Tamecka C.	8160	SGT	130	Law Registrar	Registrar's Asst
Parker, Jacqueline	8220	B	25th	Office of the President	Sr Admin Associate
Parks, Carl X.	8235	D	208	Ballotti Learning Center	Asst Director
Pascale, Elaine L.	8677	AP	1st	Second Language Services	Asst Director
Pasciuto, Raymond A.	8514	B	25th	Advancement	Dir Advancement/CAS
Patterson, George S.	8253	A	601	Chemistry	Professor
Patterson, Mark	6270	SGT	210B	Law School	Visiting Professor
Pearson, Derek M.	8484	S	908	UMS	Asst Director
Peary, Gerald M.	8505	R	412	Communications & Journalism	Professor
Peguero, Julissa M.	8460	CL	4th	Undergraduate Admission	Admission Asst
Peguero-Gonzalez, Glory	8470	D	1st	Financial Aid-Colleges	Asst Director
Perez, Ana M.	8334	S	1142	On-Line MBA	Staff Assistant
Perez, Migdalia D.	8302	CL	5th	Graduate Admission	Admission Asst
Perlin, Marc G.	8157	SGT	410M	Law-Dean	Assoc Dean
Perlman, Andrew M.	8777	SGT	340I	Law School Faculty	Asst Professor
Perlmutter, Richard M.	8153	SGT	320E	Law School Faculty	Professor
Perov, Polievkt	8276	A	326	Electrical & Computer Engineering	Instructor
Perreault, Ronald P.	8352	SGT	655C	Law Academic Technology	PC Net Support Analyst
Perry, Christine A.	8470	D	1st	Financial Aid-Colleges	Director
Peterburgsky, Irina	8702	F	407	Math & Computer Science	Professor
Petras, Pamela	1921	D	6th	Psychology	Staff Assistant
Petrucci, Andrea	8020	S	1st	Voice Communications	Voice Comm Coord
Phaen, Darren S.	8333	D	1st	University Police	Security Officer
Pham, Julie T.	8665	S	854	Dean-SSOM	Admin Associate
Piazza, Domenic	8110	A	183	Physical Plant	Utility Helper
Pierre-Francois, Nadia	8333	D	1st	University Police	Security Officer
Piscitelli, Pasquale A.	8333	D	1st	University Police	Security Officer

**Suffolk University  
Alpha Employee Listing**

<u>NAME</u>	<u>EXT</u>	<u>BLDG</u>	<u>RM</u>	<u>DEPARTMENT</u>	<u>TITLE</u>
Pizzano, Richard G.	8184	SGT	210G	Law School Faculty	Professor
Plotkins, Marilyn	8282	A	6th	Theatre Arts	Professor/Chair
Plott, Michele	8118	B	25th	History	Assoc Professor
Podlesny, Kristie Ann	8656	B	25th	Advancement	Advancement Asst
Pokorak, Jeffrey J.	8100	SGT	190	Law School Faculty	Assoc Prof/Dir CI Pr
Polito, Anthony	8518	SGT	260G	Law School Faculty	Professor
Polk, Amy E.	6349	D	3rd	Registrar-Colleges	Office Coordinator
Poplawski, Darlene F.	8373	B	25th	MIS	Programmer/Analyst
Porcello, Peter E.	8426	S	731	MIS	Dir/Computer Op
Porter, Johanna B.	8663	A	341	Physics	Staff Assistant
Powers, Carol L.	8415	B	25th	Human Resources	Human Resources Asst
Preiss, Richard P.	8503	R	411	Communications & Journalism	Assoc Professor
Prezas, Alexandros	8319	S	6th	Finance	Assoc Professor
Prezioso, Paul A.	8110	A	183	Physical Plant	HVAC Mechanic
Profera, Nancy	1936	A	481	UMS	Writer/Editor
Ptacek, James G.	8047	T	31	Sociology	Assoc Professor
Puello, Rosa	8197	SGT	370	Law School Staff	Secretary
Rahman, Mawdudur	8372	S	1142	Accounting	Professor
Ramy, Herbert N.	8709	SGT	370O	Legal Practice Skills	Dir/AC Resources
Rand, Joanne P.	8278	D	1st	Mail Services	Clerk
Rapp, Michele A.	8480	AP	1st	Career Services/Coop Education	Asst Director
Raskin, Isabel S.	3208	JJC		Juvenile Justice Center	Clinical Sup/Atty
Rauseo, Robert	8471	D	1st	Financial Aid-Colleges	Assoc Director
Ray, Sukanya	1920	D	6th	Psychology	Asst Professor
Raymond, Diane M.	8165	D	523	Academic Computing/CAS	IT Training Manager
Ready, Joseph D.	8144	SGT	150D	Law Admission	Adm E-Svcs Coord
Reedy, Robert Scott	4221	CL	6th	Center for International Education	Dir Int'l Stud Prog
Reynolds, Judith L.	8302	CL	5th	Graduate Admission	Director
Ricciardi, Jennifer	8470	D	1st	Financial Aid-Colleges	Managing Assoc Dir
Ricciuti, Maureen	8095	SGT	120D	Law Career Dvpt	Counselor
Richardson-Delay, Jade	5378	S	7th	MIS	PC Specialist
Richman, Gerald I.	8279	F	227	English	Professor
Richmond, Martha E.	8254	A	623	Chemistry	Professor
Rivera, Alfonso	8535	S	2nd	Sawyer Library	Library Asst
Rivera, Amil	1615	SGT	685	Law Library	Ref Supervisor
Rizzo, Antonia	8470	D	1st	Financial Aid-Colleges	Assoc Director
Robbins, David L.	8267	D	1st	Dean-CAS	Assoc Dean
Roberti, Betsy	6201	SGT	160E	Dean-Law	Academic Conc Admin
Robertson, Elbert L.	8054	SGT	380I	Law School Faculty	Assoc Professor
Robinson, Bridget L.	8613	D	2nd	Office of the President	Secretary
Rodin, Eugene	8783	A	361	Physics	Instructor
Rodrigues, Kathryn G.	8251	F	621	Math & Computer Science	Staff Assistant
Rodwin, Marc	8354	SGT	320B	Law School Faculty	Professor
Rogers, Mary Karen	8094	SGT	120K	Law Career Dvpt	Assoc Director
Romer, Sara	8098	A	481	UMS	Writer/Editor
Ronayne Jr., Michael R.	8265	D	1st	Dean-CAS	Dean
Rosado, Vivian	(617) 884-7568	SULS		Law Clinical Programs	Secretary
Rosati, Priscilla Sherid	8651	S	728	Marketing	Staff Assistant
Rosellini, Jay J.	8723	F	507	Humanities & Modern Languages	Professor/Chair
Rosenberg, Lori F.	8235	D	208	Ballotti Learning Center	Consultant
Rosenthal, Robert E.	8502	R	406	Communications & Journalism	Assoc Prof/Chair
Ross, Jennifer Hanley	1937	B	25th	UMS	Graphic Designer
Rothstein, Daniel H.	(617) 496-1900	RQP		Right Question Project	Exec Director
Rotondo, Mark	1966	D	1st	Dean-CAS	Data Analyst/Ed Res
Rounds Jr., Charles E.	8185	SGT	280G	Law School Faculty	Professor
Royo, Sebastian	8343	D	518	Government	Asst Professor
Rua, Colleen L.	5359	A	6th	Theatre Arts	Theatre Coordinator
Russakoff, Ellen S.	8122	D	510	Government	Staff Assistant
Rustad, Michael L.	8190	SGT	250J	Law School Faculty	Professor

**Suffolk University**  
**Alpha Employee Listing**

<u>NAME</u>	<u>EXT</u>	<u>BLDG</u>	<u>RM</u>	<u>DEPARTMENT</u>	<u>TITLE</u>
Ryan, Michael K.	8580	S	A 03	University Police	Lieutenant
Ryan, Paul J.	8403	B	25th	Business Office	Business Manager
Ryberg, Christopher T.	8333	D	1st	University Police	Security Officer
Ryu, Sungmin	8651	S	724	Marketing	Asst Professor
Rzakahrov, Zaur	4219	AP	2nd	Economics	Visiting Asst Prof
Saintiche, Gusty	8460	CL	4th	Undergraduate Admission	Admission Asst
Saldarriaga, Guillermo	8110	A	183	Physical Plant	Painter
Salomon, Frantz	8110	A	183	Physical Plant	HVAC Mechanic
Salvodon, Marjorie	8582	F	551	Humanities & Modern Languages	Asst Professor
Sandberg, Elisabeth	8775	D	6th	Psychology	Assoc Professor
Sandell, David A.	8402	S	659	Management	Visiting Professor
Sandhu, Karan S.	8633	B	25th	Budget Office	Assoc Director
Sandoe, Anthony B.	8102	SGT	240H	Law School Faculty	Professor
Sandstrom Simard, Linda	8087	SGT	340G	Law School Faculty	Professor
Sankowsky, Daniel A.	8375	S	654	Management	Professor
Sansone, Rosemarie	8428	B	25th	Public Affairs	Director
Santana, Luz M.	(617) 496-1900	RQP		Right Question Project	Dir/Training
Santangelo, Lisa K.	8453	B	25th	VP Advancement	Sr Admin Associate
Sargent, David J.	8220	B	25th	Office of the President	President
Sarkisian, Kristin M.	8220	B	25th	Office of the President	Staff Assistant
Sartwell, Peter	8268	D	1st	Dean-CAS	Assoc Dean
Savick, Wesley A.	5358	A	6th	Theatre Arts	Asst Professor
Sawyer, Kathryn	6306	D	5th	SOULS Office	Jump Start Site Manager
Scherban, Jane E.	8299	S	1st	Voice Communications	Manager
Schneider, Edward C.	8333	D	1st	University Police	Security Officer
Schneider, Michael J.	1735	R	303	UMS	Web Analyst
Schor, Miguel	6244	SGT	320A	Law School Faculty	Asst Professor
Schulze, James	8460	CL	3rd	Undergraduate Admission	Assoc Director
Schwager, Elaine C.	8379	R	206	Athletics	Assoc Director
Scott, Geoffrey J.	8302	CL	5th	Graduate Admission	Asst Director
Scott, Sandra L.	8630	B	25th	Asst Treasurer Office	Controller
Scott, Susan L.	8586	B	25th	MIS	Sr Prog/Analyst
Secci, Jane	8455	R	409	Communications & Journalism	Asst Professor
Seidman, Ilene B.	8100	SGT	190	Law School Faculty	Assoc Clinical Prof
Sellers, Connie L.	8532	S	2nd	Sawyer Library	Sr Ref Librarian
Selmi, Michael	8776	SGT	310C	Law School	Dist Visiting Prof
Sergenian, Gail	8757	S	638	Accounting	Assoc Professor
Sharif, Mohammed S.	8333	D	1st	University Police	Security Officer
Sharman, Gail Meyers	(508) 375-4056	CC		Cape Cod 2+2	Staff Assistant
Shatz, Lisa	8234	A	306	Electrical & Computer Engineering	Assoc Professor
Shaughnessy, Katie E.	8421	B	25th	MIS	Manager
Shaw, Lewis	8205	S	632	Accounting	Asst Professor
She, Voon Keat	8720	S	547	SSOM Technology Management	Network/Web Analyst
Shelley, Charles J.	8377	S	666	Management	Asst Professor
Shi, Fei	8016	F	628	Math & Computer Science	Asst Professor
Shields, John F.	8431	D	3rd	Registrar-Colleges	Assistant Registrar
Shukla, Pradeep K.	8604	F	518	Math & Computer Science	Assoc Professor
Silverstein, David	8364	S	5th	Business Law	Professor/Chair
Simonetti, Laureen	8785	ARL	2nd	NESAD	Receptionist
Sina, Amanda C.	8509	B	25th	Public Affairs	Public Affairs Asst
Sintros, James	8365	CL	6th	Center for International Education	Consultant
Sirignano, Amanda	4240	S	1st	Voice Communications	Telecomm Asst/Operator
Sklaver, Ellen S.	4282	ARL	2nd	Sawyer Library	Manager
Small, Jeffrey T.	1917	F	621	Math & Computer Science	Secretary
Smith, Liesl	5397	F	117	English	Visiting Asst Prof
Smith, Robert H.	8155	SGT	410D	Law-Dean	Dean
Smith, Stephen R.	1626	SGT	330	UMS	Asst Director
Smythe, Sara Lanier	8286	F	537	Humanities & Modern Languages	Assoc Professor
Snow, Beatrice L.	8347	A	502	Biology	Professor/Chair

**Suffolk University  
Alpha Employee Listing**

<u>NAME</u>	<u>EXT</u>	<u>BLDG</u>	<u>RM</u>	<u>DEPARTMENT</u>	<u>TITLE</u>
Snow, Douglas	8048	S	1030	Public Management	Asst Professor
Spitzer, Steven	8489	T	23	Sociology	Professor
Spivak, Mikhail I.	6377	D	5th	Academic Computing/CAS	Web PC Specialist
Spooner, Michael T.	8432	D	3rd	Registrar-Colleges	Scheduling Coordinat
Spritz, Becky L.	6395	D	6th	Psychology	Asst Professor
Stanford, Deanna	5347	F	219	English	Staff Assistant
Stefanescu, Dan C.	8679	F	637B	Math & Computer Science	Professor
Stein, Anna L.	8160	SGT	130I	Law Registrar	Assoc Registrar
Stellrecht, Lynette A.	(508) 375-4083	CC		Cape Cod 2+2	Secretary
Stephens, Susan Witt	8031	A	481	UMS	Graphic Designer
Stillman, Elizabeth	8211	SGT	370M	Legal Practice Skills	Instructor
Stoll, Nancy	8239	R	317	Dean Of Students Office	Dean of Students
Strange, Ingrid	5340	F	134A	English	Secretary
Sullivan, John R.	8110	A	183	Physical Plant	Main Mech
Swan, Sarah A.	8351	SGT	340	Law School Staff	Secretary
Sweetgall, Susan	8774	SGT	760L	Law Library	Asst Director
Sylvester, Lindsay E.	8470	D	1st	Financial Aid-Colleges	Financial Aid Asst
Syrgos, George	8451	B	25th	Advancement	Advancement Asst
Tanklefsky, Paul	8480	AP	1st	Career Services/Coop Education	Director
Taylor, Mia	8460	CL	3rd	Undergraduate Admission	Appointments Coord
Taylor, Stacey L.	6385	D	3rd	Registrar-Colleges	Assoc Registrar
Teixeira, Andrew J.	5398	F	407C	Math & Computer Science	Systems Programmer
Terrero, Roberto	8333	D	1st	University Police	Officer
Thayer, Susan C.	8570	D	1st	Dean-CAS	Assoc Dean
Thomas, Stanley	8333	D	1st	University Police	Security Officer
Thompson, Abayomi B.	8422	S	7th	MIS	Computer Operator
Thompson, Tommy F.	8544	SGT	340E	Law School Faculty	Professor
Thurau-Gray, Lisa H.	3207	JJC	.	Juvenile Justice Center	Program Admin
Tiongson, Elizabeth F.	8239	R	319	Dean Of Students Office	Admin Associate
Todd, Alexandra D.	8495	B	25th	Sociology	Professor/Chair
Topitzer, Robert J.	8490	T	B1	Sociology	Assoc Professor
Torrisi, C. Richard	8088	S	8th	Dean-SSOM	Asc Dean/Dn Grd Prgs
Toussaint, Donald	8333	D	1st	University Police	Sergeant
Tow, Allan M.	8104	F	426	Education & Human Services	Assoc Professor
Trowers, Lorraine	8333	D	1st	University Police	Security Officer
Truong, Alyssa M.	8259	AP	2nd	Economics	Staff Assistant
Tuerck, David G.	4218	AP	2nd	Economics	Professor/Chair
Turgeon, Michael B.	6353	D	3rd	Registrar-Colleges	Registrar's Asst
Turkalo, David	8079	SGT	750E	Law Library	Asst Director
Turner, Erin E.	1713	A	6	Theatre Arts	Technical Director
Tvedt, Colette	8100	SGT	190	Law Clinical Programs	Dir/Vol Defenders
Tynemouth, Brian	4284	ARL	2nd	Sawyer Library	AstDir/Lib/PC/NESAD
Tzimorangas, Rita G.	8409	D	3rd	Student Accounts/Bursar	Manager
Umansky, Lauri	8120	B	25th	History	Assoc Professor
Vacco, Richard P.	8548	SGT	380D	Law School Faculty	Professor
Valente, Aurelio M.	8320	D	529	Student Activities	Director
Valentin, Pedro J.	8333	D	1st	University Police	Security Officer
Vamosi, Nicole M.	8336	S	626	Management	Staff Assistant
Vaquerano, Ana M.	(617) 884-7568	SULS		Law Clinical Programs	Staff Assistant
Vargas, Paul D.	8333	D	1st	University Police	Security Officer
Velasquez, Maria R.	8661	S	529	SSOM Technology Management	Acad Computing Spec
Velez, Yvette C.	8460	CL	3rd	Undergraduate Admission	Counselor
Veloria, Carmen N.	(617) 522-6606	OFF		Office of the President	Coordinator/Gear-Up
Venkatraman, Meera P.	8313	S	726	Marketing	Assoc Prof/Chair
Victoria, Stephanie	8535	S	2nd	Sawyer Library	Library Asst
Vieira, Ken	8218	R	1st	Bookstore-Colleges	Manager
Vigliotta, Lisa	8415	B	25th	Human Resources	Assoc Director
Vinitzky, Stephen	8260	F	1st	Health Services	Assoc Director
Vinson, Kathleen Elliott	8210	SGT	370F	Legal Practice Skills	Dir/LPS



**Suffolk University**  
**Alpha Employee Listing**

<u>NAME</u>	<u>EXT</u>	<u>BLDG</u>	<u>RM</u>	<u>DEPARTMENT</u>	<u>TITLE</u>
Vogt, Michele A.	(508) 541-1973	DC		Enrollment & Retention Mgt.	Staff Assistant
Voto, Anthony	8593	S	1st	Mail Services	Manager
Vovan, Tan	8620	F	519	Math & Computer Science	Professor
Wagan, Carole A.	1652	SGT	110D	Advanced Legal Studies	Director
Walcott, William S.	8244	D	235	UMS	Asst Director
Walker, Mary Jane	8044	S	928	Finance	Assoc Director
Wallace, Gary	8480	AP	1st	Career Services/Coop Education	Asst Director
Walsh, Joseph F.	8460	CL	3rd	Undergraduate Admission	Assoc Director
Wark, Andrew P.	8498	S	7th	MIS	Sr PC Specialist
Webb, Robert C.	8296	D	6th	Psychology	Professor/Chair
Wells, Terrence J.	8480	AP	1st	Career Services/Coop Education	Coordinator
Wells, Yvonne	8515	D	6th	Psychology	Assoc Professor
Werner, Shannon T.	2500	RH	150	Residence Life	Asst Director
Westmacott, Paula J.	8235	D	208	Ballotti Learning Center	Director
Whalen, Thomas F.	1703	S	663	Accounting	Visiting Asst Prof
Wheeler, David R.	8391	S	723	Marketing	Assoc Professor
Whelton, Deborah	8179	SGT	760I	Law Library	Staff Assistant
White, Walter J.	8333	D	1st	University Police	Security Officer
Whitters III, James	8093	SGT	120L	Law Career Dvpt	Director
Wilcke, Marilyn	8167	B	25th	UMS	Director
Williams, Stacy A.	8429	B	25th	Advancement	Gifts Processor
Wilton, Timothy	8214	SGT	250H	Law School Faculty	Professor
Wiltz, Felicia P.	4295	T	41	Sociology	Asst Professor
Winters, Robert A.	8269	F	330A	Education & Human Services	Assoc Professor
Wise, Diane	2500	RH	150	Residence Life	Office Coordinator
Wittenberg, Jeffrey D.	8673	SGT	210L	Law School Faculty	Professor
Woldie-Abegaz, Sinidu	8333	D	1st	University Police	Security Officer
Worrick, Leigh	8110	A	183	Physical Plant	Main Mech
Wright, Bethany E.	8470	D	1st	Financial Aid-Colleges	Financial Aid Asst
Yamada, David C.	8543	SGT	260E	Law School Faculty	Professor
Yardley, Sharon	8260	F	1st	Health Services	Director
Yatim, Fuad	8585	S	731	MIS	Dir/NetServ/MicroSys
Yen, Ellen Y.	8532	S	2nd	Sawyer Library	Sr Ref Librarian
Young, Katherine L.	6307	D	529	Student Activities	Staff Assistant
Yurdin, Matthew B.	1718	CL	4th	Enroll Res/Plan	Asst Director
Zahir, Dorothy A.	1981	CL	7th	Center for International Education	Dir/Int'l AI Affairs
Zatet, Mohamed C.	8675	A	307	Electrical & Computer Engineering	Assoc Prof/Chair
Zheng, Da	8223	F	118	English	Assoc Professor
Ziad, Mostapha	8395	S	754	CIS	Asst Professor
Zinoviev, Dmitry	1985	F	434	Math & Computer Science	Asst Professor
Zuckerstatter, Rudolf	8109	A	1st	Philosophy	Professor
Zulauf, Carol A.	8089	F	419	Education & Human Services	Assoc Professor







**Suffolk University**  
**Employee List**  
**By Department**

<u>NAME</u>	<u>EXT</u>	<u>BLDG</u>	<u>ROOM</u>	<u>TITLE</u>
<b><u>Academic Computing/CAS</u></b>				
Dellicicchi, Thomas P.	8529	D	5th	Director
Drain, Robert	8599	D	5th	Manager
Limone, Richard	8574	D	5th	PC Specialist
Raymond, Diane M.	8165	D	523	IT Training Manager
Spivak, Mikhail I.	6377	D	5th	Web PC Specialist
<b><u>Accounting</u></b>				
Angelini, James P.	8361	S	635	Assoc Professor
Brown, Michael C.	5371	S	646	Staff Assistant
Bryan, E. Lewis	1704	S	668	Visiting Professor
Connors, Elizabeth	8652	S	6th	Asst Professor
Fuerman, Ross D.	8615	S	636	Asst Professor
Malvo-Rodriguez, Denise	8652	S	631	Staff Assistant
McEwen, Ruth A.	8511	S	670	Professor
McInnes, James M.	8339	S	639	Professor/Chair
Noga, Tracy J.	8652	S	6th	Asst Professor
Pant, Laurie W.	8394	S	637	Professor
Rahman, Mawdudur	8372	S	1142	Professor
Sergenian, Gail	8757	S	638	Assoc Professor
Shaw, Lewis	8205	S	632	Asst Professor
Whalen, Thomas F.	1703	S	663	Visiting Asst Prof
<b><u>Advanced Legal Studies</u></b>				
Barrett, Nicole A.	8627	SGT	110	Staff Assistant
Gatherum, Beth E.	8627	SGT	110	Staff Assistant
Landry, Katherine	1654	SGT	110C	Asst Director
Wagan, Carole A.	1652	SGT	110D	Director
<b><u>Advancement</u></b>				
Barth, Courtney	8029	B	25th	Dir/Donor Relations
Battillo, Kathryn M.	8453	B	25th	Vice President
Bouffard, Todd	8658	B	25th	Advancement Asst
Clark, Kelly M.	8522	B	25th	Major Gifts Off/SSOM
Condon, Anne	1964	B	25th	Coord Ldship Giving
Crowley, Sarah K.	8443	B	25th	Asst Dir Annual Fund
Cullinane, Keri A.	8606	CL	6th	Budget Assistant
Diplacido, Melissa E.	8643	B	25th	Advancement Asst
Dixon, Michael	6202	SGT	160	Advancement Asst
Glover, Felecia D.	8429	B	25th	Gifts Processor
Hanlon, Martha	1914	B	25th	Sr Dir/Operations & Res
Keaney, Lisa Z.	8045	B	25th	Sr AIS Officer
Macfail, Deborah L.	6202	SGT	160F	Dir Development/ Law
McNamara, Margaret	8390	B	25th	Dir/Found & Corp

**Suffolk University  
Employee List  
By Department**

<u>NAME</u>	<u>EXT</u>	<u>BLDG</u>	<u>ROOM</u>	<u>TITLE</u>
<b><u>Advancement Cont.....</u></b>				
Miller, Joyce	8429	B	25th	Manager/AIS
Pasciuto, Raymond A.	8514	B	25th	Dir Development/CAS
Podlesny, Kristie Ann	8656	B	25th	Advancement Asst
Santangelo, Lisa K.	8453	B	25th	Sr Admin Associate
Syrigos, George	8451	B	25th	Advancement Asst
Williams, Stacy A.	8429	B	25th	Gifts Processor
<b><u>Alumni Programs</u></b>				
Campbell, Kerry	1904	SGT	160	Director/Law
Donoghue, Susan	8456	B	25th	Alumni Rel Asst
Mueller, Annamaria M.	1999	SGT	160	Alumni Rel Asst
Neenan, Jean E.	8457	B	25th	Director/CAS
<b><u>Asst Treasurer Office</u></b>				
Brunelle, Ronald K.	8578	B	25th	Sr Accountant
Cheng, Wai Hing	1963	B	25th	Sr Accountant
Scott, Sandra L.	8630	B	25th	Controller
<b><u>Athletics</u></b>				
Connelly, Louis	8379	R	413	Dir/Sports Info
Maggio, Carol T.	8379	R	204	Secretary
McConnell, Cary	8379	R	203	Assoc Director
Nelson, James E.	8379	R	205	Director
Schwager, Elaine C.	8379	R	206	Assoc Director
<b><u>Ballotti Learning Center</u></b>				
Atkinson, Joyce	8235	D	208	Asst Director
Brown, Timothy M.	8235	D	208	Staff Assistant
Gottlieb, Erich	8235	D	208	Consultant
Howard, Lionel	8166	D	208	Consultant
McKetchnie, Karen A.	8235	D	208	Manager
Moore, Brian	8235	D	208	Asst Director
Morton, Jeanne	8235	D	208	Assoc Director
O'Donnell, Mary	8235	D	208	Asst Director
Parks, Carl X.	8235	D	208	Asst Director
Rosenberg, Lori F.	8235	D	208	Consultant
Westmacott, Paula J.	8235	D	208	Director
<b><u>Beacon Hill Institute</u></b>				
Barrett, John Sullivan	8780	BHI		Research Economist
Codreanu, Sorin Cristian	8750	BHI		Economist

**Suffolk University**  
**Employee List**  
**By Department**

<u>NAME</u>	<u>EXT</u>	<u>BLDG</u>	<u>ROOM</u>	<u>TITLE</u>
<b><i>Beacon Hill Institute Cont.....</i></b>				
Conte, Frank	8050	BHI		Dir/Comm Info Sys
Kurian, Tija A.	8750	BHI		Economist
Moryl, Rebecca L.	8387	BHI		Dir Operations
Murg, Corina I	8750	BHI		Economist
Tuerck, David	4218	BHI		Executive Director
<b><u>Biology</u></b>				
Burgess, William A.	8249	A	506	Asst Professor
Burn, Peter R.	8248	A	507	Professor
Ford, Vicki	8246	A	501	Staff Assistant
Goodman, Harold F.	8600	A	510	Instructor
Martin, Bernice M.	8247	A	568	Asst Professor
Merrill III, Carl L.	8398	A	542	Assoc Professor
Mulcahy, Henry L.	8622	A	549	Professor
Snow, Beatrice L.	8347	A	502	Professor/Chair
<b><u>Bookstore-Colleges</u></b>				
Butler, Melanie	8218	R	1st	Asst Manager
Vieira, Ken	8218	R	1st	Manager
<b><u>Bookstore-Law</u></b>				
Gomes, Andy	6221	SGT	1st	Manager
<b><u>Budget Office</u></b>				
Dooley, Maureen	8611	B	25th	Dir Univ Bdgt/Risk
Hinds, Dawn S.	8633	B	25th	Insurance Coord
Sandhu, Karan S.	8633	B	25th	Assoc Director
<b><u>Business Law</u></b>				
Blodgett, Mark S.	8064	S	5th	Assoc Professor
Eonas, Anthony G.	8362	S	5th	Assoc Professor
Malvo-Rodriguez, Denise	8652	S	631	Staff Assistant
Silverstein, David	8364	S	5th	Professor/Chair
<b><u>Business Office</u></b>				
Alterno, Wendy B.	8404	B	25th	Clerical Asst
Harris, Gregory E.	8404	B	25th	Assoc Business Mgr
Koch, Ellen E.	8405	B	25th	Purchasing Coordinator
Mejia, Yeuris J.	8404	B	25th	Accts Payable Asst
Nguyen, Dung T.	4237	B	25th	Manager
Ryan, Paul J.	8403	B	25th	Business Manager

**Suffolk University  
Employee List  
By Department**

<u>NAME</u>	<u>EXT</u>	<u>BLDG</u>	<u>ROOM</u>	<u>TITLE</u>
<b><u>Campus Ministry</u></b>				
Fisher, Amy	8352	D	5th	Campus Minister
<b><u>Cape Cod 2+2</u></b>				
Sharman, Gail Meyers	(508) 375-4056	CC		Staff Assistant
Stellrecht, Lynette A.	(508) 375-4083	CC		Secretary
<b><u>Career Services/Coop Education</u></b>				
Elmorsi, Miranda N.	8480	AP	1st	Coordinator
McDowell, Elizabeth	8480	AP	1st	Assoc Director
McQuaid, Peter	8480	AP	1st	Dir/Coop Ed
Rapp, Michele A.	8480	AP	1st	Asst Director
Tanklefsky, Paul	8480	AP	1st	Director
Wallace, Gary	8480	AP	1st	Asst Director
Wells, Terrence J.	8480	AP	1st	Coordinator
<b><u>Center for International Education</u></b>				
Bennett, Rebekka E.	4243	CL	7th	Alumni Rel Asst
Bergeron, Jennifer J.	8469	CL	6th	Staff Assistant
Durham, Daphne	8154	CL	6th	Dir Immig Svcs
Grover, Lauren M.	1903	CL	6th	Admin Coordinator
Hinnawi, Youmna H.	8072	CL	7th	Dir Study Abroad
Morford, Juleen M.	8154	CL	6th	Intern
Reedy, Robert Scott	4221	CL	6th	Dir Int'l Stud Prog
Sintros, James	8365	CL	6th	Consultant
Zahir, Dorothy A.	1981	CL	7th	Dir/Int'l AI Affairs
<b><u>Chemistry</u></b>				
Carrabino, Courtney F.	8250	A	621	Staff Assistant
Ciuryla, Joseph V.	1927	A	662	Instructor
Good Jr., William E.	8250	A	612	Professor
Hamm, Patricia H.	1928	A	613	Visiting Asst Prof
Lewis, Doris I.	8546	A	603A	Professor/Chair
Miliora, Maria T.	8252	A	622	Professor
Patterson, George S.	8253	A	601	Professor
Richmond, Martha E.	8254	A	623	Professor
<b><u>CIS</u></b>				
Briggs, Warren G.	8368	S	762	Professor
Carlson, Patricia J.	8077	S	752	Assoc Professor
Dedeke, Adenekan A.	8311	S	764	Asst Professor
Frank, Jonathan	8617	S	763	Assoc Professor
Ilin, Mikhail B.	8331	S	760	Staff Assistant
Kahn, Beverly	8642	S	755	Assoc Prof/Chair



**Suffolk University**  
**Employee List**  
**By Department**

<u>NAME</u>	<u>EXT</u>	<u>BLDG</u>	<u>ROOM</u>	<u>TITLE</u>
<i>CIS Cont.....</i>				
Lee, Denis	8442	S	1024	Professor
Mana, Jafar	5375	S	761	Clinical Asst Prof
Ziad, Mostapha	8395	S	754	Asst Professor
<b><u>Communications &amp; Journalism</u></b>				
Ayeni, Olugbenga C.	8201	R	413	Asst Professor
Bekken, Jon	8142	R	404	Assoc Professor
Boone, Gloria	8501	R	405	Professor
Carragee, Kevin M.	8768	R	402	Assoc Professor
Geisler, Deborah M.	8504	R	403	Assoc Professor
Guilar, Joshua	8767	R	410	Assoc Professor
Hegarty, Ruth	8236	R	407	Secretary
Karns, Vicki L.	5308	R	401	Assoc Professor
Landry, Mary A.	8236	R	407	Staff Assistant
McKenna, Christina	8237	R	300	Visiting Asst Prof
Peary, Gerald M.	8505	R	412	Professor
Preiss, Richard P.	8503	R	411	Assoc Professor
Rosenthal, Robert E.	8502	R	406	Assoc Prof/Chair
Secci, Jane	8455	R	409	Asst Professor
<b><u>Corporate Education</u></b>				
Nazzaro, Linda J.	8784	CL	2nd	Acting Director
<b><u>Counseling Center</u></b>				
Anderson, Jay	8226	R	312	Intern
Busse, Wilma J.	8226	R	308	Assoc Professor
Chang, Lynn	8226	R	306	Intern
Field, Lynda D.	8226	R	310	Asst Professor
Garni, Kenneth F.	8226	R	309	Professor/Chair
Jackson, Kathryn	8226	R	312	Assistant Professor
Korn, Paul R.	8226	R	307	Professor
McCarthy, Sheila A.	8226	R	305	Office Coordinator
Moran, Jennifer	8226	R	306	Intern
<b><u>Dean-CAS</u></b>				
Alvarez, Pauline L.	8265	D	1st	Secretary
Baldwin, Leann L.	8268	D	1st	Admin Assistant
Deddy, Natalie J.	6313	D	1st	Admin Associate
Ferris, Melissa B.	8267	D	1st	Admin Assistant
Gallant, David	1971	D	1st	Prg Dir/UG Advising
Greenberg, Kenneth	8527	B	25th	Assoc Dean/Prof
Libbares, Georgia A.	8570	D	1st	Admin Assistant
Robbins, David L.	8267	D	1st	Assoc Dean

**Suffolk University  
Employee List  
By Department**

<u>NAME</u>	<u>EXT</u>	<u>BLDG</u>	<u>ROOM</u>	<u>TITLE</u>
<b><u>Dean-CAS Cont.....</u></b>				
Ronayne Jr., Michael R.	8265	D	1st	Dean
Rotondo, Mark	1966	D	1st	Data Analyst/Ed Res
Sartwell, Peter	8268	D	1st	Assoc Dean
Thayer, Susan C.	8570	D	1st	Assoc Dean
<b><u>Dean Of Students Office</u></b>				
Clark, Alexis M.	8239	R	3rd	Coordinator
Destefano, Christopher	6307	D	5th	Asst to Dean/Sp Prog
Gabriel, Elliot	8239	R	315	Assoc Dean
Giordano, Christopher M.	8239	R	314	Asst Dean
Stoll, Nancy	8239	R	317	Dean of Students
Tiongson, Elizabeth F.	8239	R	319	Admin Associate
<b><u>Dean-SSOM</u></b>				
Atherton, Susan C.	8303	S	839	Assoc Dean
Bardwell, Sandra S.	8088	S	827	Admin Assistant
Berman, Alisa	8301	S	837	Admin Assistant
Hill, Mary	8307	S	8th	Secretary
Khakshari, Shariar	8366	S	856	Asc Dean/Professor
Lerman, Myra	8624	S	838	Asst Dean
Mahoney, Lauren	8225	S	844	PrgDir/UG Advising
Malioneck, Theresa	8631	S	860	Dir/Comm/Sp Events
Medina, Carol	1705	S	8th	Secretary
O'Brien, Helen A.	8335	S	859	Dir/Adm & Budget
O'Neill, William J.	8665	S	8th	Dean
Pham, Julie T.	8665	S	854	Admin Associate
Torrison, C. Richard	8088	S	8th	Asc Dean/Dn Grd Prgs
<b><u>Economics</u></b>				
Baek, In-Mee	8376	AP	2nd	Assoc Professor
Chisholm, Darlene C.	1932	AP	2nd	Assoc Professor
Foglia, Louis	8124	AP	2nd	Instructor
Haughton, Jonathan	8127	AP	2nd	Assoc Professor
Hawke, Alison K.	8069	AP	2nd	Assoc Professor
Jaggia, Sanjiv	8023	AP	2nd	Professor
Mohtadi-Haghigh, Shahruz	8670	AP	2nd	Assoc Professor
Rzakahrov, Zaur	4219	AP	2nd	Visiting Asst Prof
Truong, Alyssa M.	8259	AP	2nd	Staff Assistant
Tuerck, David G.	4218	AP	2nd	Professor/Chair
<b><u>Education &amp; Human Services</u></b>				
Ash, Barbara L.	8280	F	336	Professor
Carroll, Sarah M.	8015	F	332	Asst Professor

**Suffolk University**  
**Employee List**  
**By Department**

<u>NAME</u>	<u>EXT</u>	<u>BLDG</u>	<u>ROOM</u>	<u>TITLE</u>
<b><i>Education &amp; Human Services Cont.....</i></b>				
Dahlborg, Lynne D.	8228	F	428	Assoc Professor
DiBiase, Rosemarie	8483	F	416	Assoc Professor
Eskedal, Glen	8264	F	242	Professor/Chair
Flaherty, Mary M.	1958	F	427	Assoc Professor
Gaskell, Susan	5328	F	420	Asst Professor
Gately, Melissa	8261	F	244	Staff Assistant
Goodwin, Heather B.	8261	F	244	Secretary
Lewandowski, Glen A.	8281	F	334	Professor
Mahoney, Sheila M.	1993	F	335	Assoc Professor
Medoff, David	8540	F	330B	Asst Professor
Tow, Allan M.	8104	F	426	Assoc Professor
Winters, Robert A.	8269	F	330A	Assoc Professor
Zulauf, Carol A.	8089	F	419	Assoc Professor
<b><u>Electrical &amp; Computer Engineering</u></b>				
Akstin, Cheryl A.	8230	A	301	Staff Assistant
Christensen, Craig W.	8676	A	309	Assoc Professor
O'Brant, Natasha	8565	A	308	Assoc Professor
Perov, Polievkt	8276	A	326	Instructor
Shatz, Lisa	8234	A	306	Assoc Professor
Zatet, Mohamed C.	8675	A	307	Assoc Prof/Chair
<b><u>Emeriti Faculty</u></b>				
Burnim, Charles	8215	SGT	250D	Law School
Callahan, Brian	8552	SGT	250C	Law School
Maleson, Alfred	8552	SGT	250C	Law School
McMahon, Thomas	8215	SGT	250D	Law School
Nolan, John	8215	SGT	250D	Law School
Sherman, John	8552	SGT	250C	Law School
<b><u>Emeriti Librarian</u></b>				
Bander, Edward	8058	SGT	250B	Law School
Brown, Patrica	8058	SGT	250B	Law School
<b><u>English</u></b>				
Bigelow, Blair	8290	F	326	Professor
Caputo, Peter	8796	F	206	Assoc Professor
Celovsky, Lisa A.	5397	F	117	Asst Professor
Coffler, Gail H.	8275	F	209	Professor
Colafella, Shauna E.	5346	F	216	Secretary
Connolly, Thomas F.	1918	F	205	Asst Professor
Grathwol, Kathleen B.	1919	F	328	Asst Professor
Jurich, Marilyn	8273	F	327	Assoc Professor

**Suffolk University**  
**Employee List**  
**By Department**

<u>NAME</u>	<u>EXT</u>	<u>BLDG</u>	<u>ROOM</u>	<u>TITLE</u>
<b><i>English Cont.....</i></b>				
Mandl, Bette	8277	F	228	Professor
Marchant, Frederick	8053	F	329	Professor
McKinley, Marlene M.	8629	F	226	Professor
Merzlak, Anthony G.	8291	F	535	Professor/Chair
Miller, Daniel Q.	8289	F	119	Asst Professor
Millner, Stuart A.	8274	F	218	Professor
Richman, Gerald I.	8279	F	227	Professor
Smith, Liesl	5397	F	117	Visiting Asst Prof
Stanford, Deanna	5347	F	219	Staff Assistant
Strange, Ingrid	5340	F	134A	Secretary
Zheng, Da	8223	F	118	Assoc Professor
<b><u>Enroll Res/Plan</u></b>				
Duggan, Michael B.	8468	CL	4th	Director
Mahar, Tara E.	1913	CL	4th	Assoc Director
Mathews, Rebecca A.	1912	CL	4th	Asst Director
Yurdin, Matthew B.	1718	CL	4th	Asst Director
<b><u>Enrollment &amp; Retention Mgt.</u></b>				
Andrews, Charlene	1982	CL	6th	Sr Admin Associate
Baldassaro, Michael J.	8647	CL	2nd	Staff Assistant
Benson, Judy L.	8718	CL	2nd	Prog Dir/Retention
Bonvouloir, Susan M.	(508) 541-1972	DC		Dir Enroll/Dean Prog
Caffey, Walter F.	8647	CL	2nd	Dean
Dennis, Marguerite	8440	CL	6th	VP Enroll/Int'l Pro
James Leyva, Susan G.	8647	CL	2nd	Admin Associate
Vogt, Michele A.	(508) 541-1973	DC		Staff Assistant
<b><u>Executive MBA</u></b>				
Caffrey, Patricia A.	8660	S	4th	Staff Assistant
Nowak, Peter J.	8660	S	4th	Dir/Exec MBA
<b><u>Facilities Planning</u></b>				
Delaney, Paul A.	1729	S	S-B	Asst Director
Feeley, Michael L.	4242	B	25th	Project Counsel
Gibson, Stephanie D.	5379	B	25th	Admin Assistant
Kennedy, Joseph	8305	B	25th	Dir/Fac Planning
<b><u>Finance</u></b>				
Argyrople, Christopher	8449	S	6th	Clinical Asst Prof
Datta, Mai I.	8672	S	9th	Assoc Professor
Duong, Gina	8396	S	924	Staff Assistant
Freund, Steven	8794	S	9th	Asst Professor

**Suffolk University**  
**Employee List**  
**By Department**

<u>NAME</u>	<u>EXT</u>	<u>BLDG</u>	<u>ROOM</u>	<u>TITLE</u>
<b><i>Finance Cont.....</i></b>				
Guo, Lin	8388	S	6th	Asst Professor
Han, Ki C.	8561	S	9th	Professor/Chair
Kane, Stephen A.	5365	S	6th	Asst Professor
Khaksari, Shahriar	8366	S	856	Asc Dean/Professor
Leonard, Kim M.	8641	S	9th	Program Assistant
Madden, Gerald	4276	S		Visiting Assoc Prof
McLaughlin, Robyn M.	8378	S	9th	Assoc Professor
Muzere, Mark	8396	S	9th	Asst Professor
O'Hara, Henry T.	8340	S	935	Assoc Professor
Prezas, Alexandros	8319	S	6th	Assoc Professor
Walker, Mary Jane	8044	S	928	Assoc Director
<b><u>Financial Aid-Colleges</u></b>				
Dunn, Kristi L.	8470	D	1st	Assoc Director
Feltch III, Charles J.	8470	D	1st	Asst Director
Goguen, Dianne	8470	D	1st	Assoc Director
Lemay, Michelle Ann	8470	D	1st	Assoc Director
Lungelow, Brandy T.	8470	D	1st	Financial Aid Asst
Peguero-Gonzalez, Glory	8470	D	1st	Asst Director
Perry, Christine A.	8470	D	1st	Director
Rauseo, Robert	8471	D	1st	Assoc Director
Ricciardi, Jennifer	8470	D	1st	Managing Assoc Dir
Rizzo, Antonia	8470	D	1st	Assoc Director
Sylvester, Lindsay E.	8470	D	1st	Financial Aid Asst
Wright, Bethany E.	8470	D	1st	Financial Aid Asst
<b><u>Government</u></b>				
Bain, Agnes S.	8123	D	510	Professor/Chair
Berg, John	8126	D	517	Professor
Burke, Mary P.	8128	D	515	Asst Professor
Cammisa, Anne Marie	8130	D	514	Assoc Professor
Dushku, Judith	8129	D	512	Assoc Professor
Harris, Calvin E.	8133	D	519	Asst Professor
O'Callaghan, John J.	8125	D	513	Assoc Professor
Royo, Sebastian	8343	D	518	Asst Professor
Russakoff, Ellen S.	8122	D	510	Staff Assistant
<b><u>Graduate Admission</u></b>				
Bishop, Theresa	8302	CL	5th	Assoc Director
Driscoll, Ellen M.	8302	CL	5th	Assoc Director
Entin, Judith A.	8302	CL	5th	Manager
Foggarty, Patrice	8302	CL	5th	Manager
Gonzales, Susan J.	8302	CL	5th	Admission Asst

**Suffolk University**  
**Employee List**  
**By Department**

<u>NAME</u>	<u>EXT</u>	<u>BLDG</u>	<u>ROOM</u>	<u>TITLE</u>
<b><i>Graduate Admission Cont.....</i></b>				
Lewis-Bowen, Erica S.	8302	CL	5th	Adm Sys Coord
Perez, Migdalia D.	8302	CL	5th	Admission Asst
Reynolds, Judith L.	8302	CL	5th	Director
Scott, Geoffrey J.	8302	CL	5th	Asst Director
<b><u>Health Services</u></b>				
Dawkins, Dione	8260	F	1st	Secretary
Fitzgerald, Margaret E.	8260	F	1st	Nurse Practitioner
Gracia, Shannon E.	8260	F	1st	Coordinator
Holbrook, Gloria A.	8260	F	1st	Nurse Practitioner
Vinitsky, Stephen	8260	F	1st	Assoc Director
Yardley, Sharon	8260	F	1st	Director
<b><u>History</u></b>				
Allison, Robert J.	8510	B	25th	Assoc Professor
Bellinger, Robert	8121	B	25th	Assoc Professor
Cavanagh, John C.	8119	B	25th	Professor
Greenberg, Kenneth S.	8527	B	25th	Prof/Chair
Keefe, Susan	8116	B	25th	Staff Assistant
Lenzie, Sharon	5372	B	25th	Admin Assistant
Plott, Michele	8118	B	25th	Assoc Professor
Umansky, Lauri	8120	B	25th	Assoc Professor
<b><u>Human Resources</u></b>				
Cawthorne, Lori G.	8415	B	25th	Asst Director
Edgers, Elizabeth J.	8415	B	25th	Asst Director
Lee, Roger	8415	B	25th	Human Resources Asst
Minardi, Judith Ann	8415	B	25th	Director
Morgan, Sheneka A.	8415	B	25th	Secretary
Powers, Carol L.	8415	B	25th	Human Resources Asst
Vigliotta, Lisa	8415	B	25th	Assoc Director
<b><u>Humanities &amp; Modern Languages</u></b>				
Abrams, Barbara L.	8284	F	538	Asst Professor
Atkins, Christine D.	8287	F	554	Visiting Asst Prof
Cooperman, Celeste	8674	F	553	Professor
Cramer, Charles	5348	F	504	Asst Professor
Ferullo, Karen	8285	F	506	Staff Assistant
Griffith, Stacey M.	8285	F	503	Secretary
Kelton, R. Harrison	8724	F	536	Assoc Professor
Marko, Jonathan D.	8385	F	530	Instructor
Rosellini, Jay J.	8723	F	507	Professor/Chair
Salvodon, Marjorie	8582	F	551	Asst Professor
Smythe, Sara Lanier	8286	F	537	Assoc Professor

**Suffolk University  
Employee List  
By Department**

<u>NAME</u>	<u>EXT</u>	<u>BLDG</u>	<u>ROOM</u>	<u>TITLE</u>
<b><u>Juvenile Justice Center</u></b>				
Badger, James A.	3205	JJC		Soc Wkr/Advocate
Demarco, Anthony	1641	SGT	190C	Director
Gutierrez, Cecy C.	3200	JJC		Staff Assistant
Lawrence, Danette J.	3203	JJC		Soc Wkr/Advocate
Monette Jr., Pierre F.	3202	JJC		Clinical Sup/Atty
Moriearty, Perry L.	3204	JJC		Clinical Sup/Atty
Raskin, Isabel S.	3208	JJC		Clinical Sup/Atty
Thurau-Gray, Lisa H.	3207	JJC		Program Admin
<b><u>Law Academic Technology</u></b>				
Barrett, James	6285	SGT	661B	Manager/Web Services
Darrer, Cynthia J.	8352	SGT	655F	Manager
Davison, Elena	6286	SGT	661C	Asst Manager/Web Services
Doherty, Gina	8352	SGT	655E	Dir/PC Resources
Eichen, Marc A.	8479	SGT	661A	Director
Gonzalez, Jose Antonio	8352	SGT	655G	Computing Assistant
Murray, Brendan P.	8352	SGT	6th	Acad Computing Spec
Perreault, Ronald P.	8352	SGT	655C	PC Net Support Analy
<b><u>Law Admission</u></b>				
Bolt, Jane	8144	SGT	150D	Admission Assistant
Ellis, Gail N.	8144	SGT	150D	Dean of Admission
Kleinschnittger, Mark J.	8144	SGT	150D	Adm E-Svcs Coord
Menchini, Ian A.	8144	SGT	150D	Asst Director
Papantones, Karianne	8144	SGT	150D	Asst Director
Ready, Joseph D.	8144	SGT	150D	Adm E-Svcs Coord
<b><u>Law Career Dvpt</u></b>				
Commons, Dorothy Brooks	8686	SGT	120N	Asst Director
Dobbins, Michelle Ann	1674	SGT	120H	Asst Director
Dufault, Richard	1675	SGT	120G	Coordinator
Goldstein, Amy R.	8092	SGT	120J	Asst Director
Kolb, Amy	6264	SGT	120D	Counselor
Loprete, Amy	8148	SGT	120	Career Resource Asst
Matson, Kate	8149	SGT	120	Career Resource Asst
McMillen, Elissa L.	6264	SGT	120D	Counselor
Murphy, Colleen A.	1676	SGT	120M	Counselor
Ricciuti, Maureen	8095	SGT	120D	Counselor
Rogers, Mary Karen	8094	SGT	120K	Assoc Director
Whitters III, James	8093	SGT	120L	Director
<b><u>Law Clinical Programs</u></b>				
Berman, William	(617) 884-7568	SULS		Asst Clinical Prof
Callahan, Stephen	8588	SGT	320D	Professor
Caulo, Ellen M.	8100	SGT	190	Dir/Vol Prosecutor

**Suffolk University  
Employee List  
By Department**

<u>NAME</u>	<u>EXT</u>	<u>BLDG</u>	<u>ROOM</u>	<u>TITLE</u>
<b><i>Law Clinical Programs Cont.....</i></b>				
Feeley, Bernadette T.	8554	SGT	165B	Dir Internship Prog
Gundlach, Jennifer	8100	SGT	190	Asst Clinical Prof
Luke, Joan	8100	SGT	190	Staff Assistant
McEachern, Andrea N.	8100	SGT	190	Secretary
Pokorak, Jeffrey J.	8100	SGT	190	Assoc Prof/Dir Cl Pr
Rosado, Vivian	(617) 884-7568	SULS		Secretary
Seidman, Ilene	8100	SGT	190	Assoc Clinical Prof
Tvedt, Colette	8100	SGT	190	Dir/Vol Defenders
Vaquerano, Ana M.	(617) 884-7568	SULS		Staff Assistant
<b><u>Law Financial Aid</u></b>				
Allen, Jocelyn	8147	SGT	140E	Director
Ceder, Linda J.	8147	SGT	140C	Asst Director
Kinney, Brett H.	8147	SGT	140F	Systems Coordinatr
Logan, Helen	8147	SGT	140D	Asst Director
Lust, Tami R.	8147	SGT	140F	Coordinator
<b><u>Law Grad Program (LL.M.)</u></b>				
Davidson, Patricia A.	8171	SGT	160C	Dir/LLM Program
<b><u>Law Library</u></b>				
Ash, Sabrina A.	1614	SGT	685D	Cir/Pub Srvs Libr
Beckworth, Ellen	1608	SGT	760G	Legal Ref Librarian
Bezanson, Sarah	1601	SGT	750C	Acquisition Asst
Boucicaut-Louis, Yvens	1611	SGT	625	Library Asst
Buckingham, Richard L.	8605	SGT	760	Legal Ref Librarian
Camelio, Jessica N.	1605	SGT	750	Sr Serials Asst
Carey, Megan E.	8075	SGT	750F	Copy Cataloguer
Chiofalo, Christopher	8178	SGT	750D	Acquisitions Manager
D'Angelo, Diane M.	8608	SGT	760H	Sr Ref Librarian
Delaney, Ellen V.	1607	SGT	760E	Legal Ref Librarian
Fazzino, Lusiella	1606	SGT	760C	Ref & Elec Svcs Libr
Flaherty, Brian M.	8199	SGT	760F	Sr Ref Librarian
Flynn, John J.	1603	SGT	750B	Ser/Bib Ctrl Lib
Flynn, Lawrence S.	1943	SGT	645A	Comp Serv Spec
Hogan, Julie Ann	1602	SGT	750C	Sr Acq Assistant
Honda, Leighton N.	1610	SGT	625	Evening Supervisor
Jordan, Paula	1604	SGT	750A	Serials Assistant
Keren, Steven Y.	8034	SGT	685	Reference Assistant
McKenzie, Elizabeth	8705	SGT	760J	Director
Nicolas, Jonane	1611	SGT	625	Library Asst
North, Melanie A.	1612	SGT	625	Library Asst
Rivera, Amil	1615	SGT	685	Ref Supervisor
Sweetgall, Susan	8774	SGT	760L	Asst Director
Turkalo, David	8079	SGT	750E	Asst Director
Whelton, Deborah	8179	SGT	760I	Staff Assistant



**Suffolk University**  
**Employee List**  
**By Department**

<u>NAME</u>	<u>EXT</u>	<u>BLDG</u>	<u>ROOM</u>	<u>TITLE</u>
<b><u>Law Registrar</u></b>				
Baetzel, Rosetta M.	8160	SGT	130J	Assoc Registrar
Bansavich, Linda-Ann	8160	SGT	130	Registrar's Asst
Berrios, Myriam M.	8160	SGT	130	Registrar's Asst
Cove, Lorraine D.	8160	SGT	130H	Registr Asst to Dean
Curran, Melissa A.	8160	SGT	130	Staff Assistant
Leo, Elaine	8160	SGT	130	Registrar's Asst
Parham, Tamecka C.	8160	SGT	130	Registrar's Asst
Stein, Anna L.	8160	SGT	130I	Assoc Registrar
<b><u>Law Review</u></b>				
Fratto, Marie J.	8180	SGT	430	Secretary
<b><u>Law School Faculty</u></b>				
Ashe, Marie	8086	SGT	260D	Professor
Avery, Michael A.	8551	SGT	320A	Assoc Professor
Baker, Robert L.	8186	SGT	240F	Professor
Beckerman-Rodau, Andrew	8557	SGT	340A	Professor
Berman, William L.	(617) 884-7568	SULS		Asst Clinical Prof
Bishop, Carter	8534	SGT	250J	Professor
Blum, Karen M.	8216	SGT	280A	Professor
Blumenson, Eric D.	1967	SGT	320C	Professor
Brown, Barry	8298	SGT	210H	Professor
Callahan, Stephen J.	8588	SGT	320D	Professor
Carpenter, Kristen	8530	SGT	320I	Asst Professor
Cavallaro, Rosanna J.	8195	SGT	340H	Professor
Clark, Gerard J.	8583	SGT	240C	Professor
Comer, Joan	8191	SGT	270D	Manager
Corbett, William T.	1683	SGT	280E	Professor
Cronin, Joseph D.	8547	SGT	210I	Professor
Day, Kate N.	8559	SGT	240D	Professor
Dillon, Sara A.	8105	SGT	260H	Assoc Professor
Dodd, Victoria	8567	SGT	380G	Professor
Eisenstat, Steven	8710	SGT	260B	Professor
Elias, Clifford E.	8170	SGT	310F	Professor
Epps, Valerie C.	8562	SGT	380B	Professor
Feeney, Donald J.	8725	SGT	666	Duplicating Svc Spec
Felt, Jucimara E.	8164	SGT	310	Secretary
Fenton, John	3027	SGT	310H	Distinguished Prof
Ferrey, Steven	8103	SGT	250G	Professor
Finn, Thomas R.	8106	SGT	380A	Professor
Fisher, Keith R.	8169	SGT	380H	Assoc Professor
Fortes, Mishell A.	3029	SGT	380	Secretary
Franco, Joseph A.	8152	SGT	240A	Assoc Professor
Glannon, Joseph W.	8188	SGT	380C	Professor
Golann, Dwight	8183	SGT	340F	Professor
Graham, Lorie	3025	SGT	340I	Assoc Professor

**Suffolk University  
Employee List  
By Department**

<u>NAME</u>	<u>EXT</u>	<u>BLDG</u>	<u>ROOM</u>	<u>TITLE</u>
<i>Law School Faculty Cont.....</i>				
Greenbaum, Marc	8369	SGT	320F	Professor
Gundlach, Jennifer A.	8100	SGT	190	Asst Clinical Prof
Hicks, Stephen C.	8381	SGT	280D	Professor
Hunt II, Cecil Jerome	8182	SGT	260H	Assoc Professor
Judge, Catherine T.	8187	SGT	310G	Professor
Karalekas, Lisa	8224	SGT	240	Secretary
Kindregan, Charles P.	8193	SGT	240E	Professor
Lafauci, Janine M.	8583	SGT	165	Secretary
Landers, Renee M.	1686	SGT	380J	Assoc Professor
Landsman, Stephan	8572	SGT	210C	Dist Visiting Prof
Lavita, Danielle M.	8350	SGT	250	Secretary
Lemelman, Herbert	8208	SGT	310I	Professor
Lewis, Annestine	8198	SGT	320	Secretary
Lynch, Helen Alberta	8346	SGT	280	Secretary
McEttrick, Joseph P.	8181	SGT	210F	Professor
McJohn, Stephen M.	8549	SGT	340C	Professor
Mello, Babette M.	8550	SGT	210J	Secretary
Morehouse, Marilyn	8644	SGT	270C	Dir/Admin & Sup Serv
Murphy, Russell G.	8052	SGT	260C	Professor
Nolan, Joseph R.	8137	SGT	310C	Professor
Ortwein, Bernard M.	8590	SGT	280F	Professor
Patterson, Mark	6270	SGT	210B	Visiting Professor
Perlman, Andrew M.	8777	SGT	340I	Asst Professor
Perlmutter, Richard M.	8153	SGT	320E	Professor
Pizzano, Richard G.	8184	SGT	210G	Professor
Pokorak, Jeffrey J.	8100	SGT	190	Assoc Prof/Dir Cl Pr
Polito, Anthony	8518	SGT	260G	Professor
Puello, Rosa	8197	SGT	370	Secretary
Robertson, Elbert L.	8054	SGT	380I	Assoc Professor
Rodwin, Marc	8354	SGT	320B	Professor
Rounds Jr., Charles E.	8185	SGT	280G	Professor
Rustad, Michael L.	8190	SGT	250J	Professor
Sandoe, Anthony B.	8102	SGT	240H	Professor
Sandstrom Simard, Linda	8087	SGT	340G	Professor
Schor, Miguel	6244	SGT	320A	Asst Professor
Seidman, Ilene B.	8100	SGT	190	Assoc Clinical Prof
Selmi, Michael	6244	SGT	280K	Dist Visiting Prof
Swan, Sarah A.	8351	SGT	340	Secretary
Thompson, Tommy F.	8544	SGT	340E	Professor
Vacco, Richard P.	8548	SGT	380D	Professor
Wilton, Timothy	8214	SGT	250H	Professor
Wittenberg, Jeffrey D.	8673	SGT	250I	Professor
Yamada, David C.	8543	SGT	260E	Professor

**Suffolk University**  
**Employee List**  
**By Department**

<u>NAME</u>	<u>EXT</u>	<u>BLDG</u>	<u>ROOM</u>	<u>TITLE</u>
<b><u>Law-Dean</u></b>				
Archdeacon, Susan F.	8155	SGT	410F	Admin Associate
Beaudette, Deborah A.	6205	SGT	160H	Dir/Communications
Chu, Justina F.	8081	SGT	425B	Budget Systems Coord
Coles-Roby, Beverly R.	8157	SGT	410S	Dean of Students
Deliso, John	8155	SGT	410H	Assoc Dean
Ferrari, Laura A.	8157	SGT	410T	Asst Dean
Fitzpatrick, Julie M.	8096	SGT	160	Events Coordinator
Hamilton, Ellen	8159	SGT	410A	Receptionist
Higgins, Paula S.	8157	SGT	410J	Admin Assistant
Joseph, Joanne	8155	SGT	410A	Reception Serv Coord
Keenan Jr., Bernard V.	8157	SGT	425H	Assoc Dean
McLaughlin, Patricia	8157	SGT	410I	Admin Assistant
Miller, Marc D.	8196	SGT	410R	Dir/Finance & Budget
Perlin, Marc G.	8157	SGT	410M	Assoc Dean
Roberti, Betsy	6201	SGT	160E	Academic Conc Admin
Smith, Robert H.	8155	SGT	410D	Dean
<b><u>Legal Practice Skills</u></b>				
Baker, Julie A.	8136	SGT	370A	Instructor
Brown, Colleen A.	8074	SGT	370H	Instructor
Davis, Jennifer M.	8519	SGT	370D	Instructor
Didget, Carol E.	8108	SGT	370B	Instructor
Freudenheim, Lisa R.	8563	SGT	370P	ASP Instructor
Griffin, Geraldine	3026	SGT	370J	Instructor
Healy, Elisabeth H.	8699	SGT	370C	Instructor
Johnsen, Melissa W.	8139	SGT	370I	Instructor
Kaplan, Philip	8212	SGT	370G	Instructor
McGonigle Santos, Ann T.	8558	SGT	370E	Instructor
Moppett, Samantha A.	8135	SGT	370K	Instructor
Ramy, Herbert N.	8709	SGT	370O	Dir/AC Resources
Stillman, Elizabeth	8211	SGT	370M	Instructor
Vinson, Kathleen Elliott	8210	SGT	370F	Dir/LPS
<b><u>Macaronis Institute</u></b>				
Irwin Jr., John J.	8556	SGT	310B	Dir/Macaronis Inst
<b><u>Mail Services</u></b>				
Austin, Kevin P.	8348	S	BA	Clerk
Bryson, Dennis A.	8348	S	1st	Senior Mail Clerk
Delaine, Tahira	8278	D	1st	Asst Supervisor
Gonzalez, Diana F.	1618	SGT	106	Supervisor
Mejia, Johanny	1618	SGT	106	Senior Mail Clerk
Rand, Joanne P.	8278	D	1st	Clerk
Voto, Anthony	8593	S	1st	Manager

**Suffolk University  
Employee List  
By Department**

<u>NAME</u>	<u>EXT</u>	<u>BLDG</u>	<u>ROOM</u>	<u>TITLE</u>
<b><u>Management</u></b>				
Arthur, Michael B.	8357	S	629	Professor
Chen, Zhongyang	8659	S	662	Vst Fulbright Scholar
Defillippi, Robert J.	8243	S	650	Professor
Delaunay, Christian	5366	S	651	Visiting Asst Prof
Dumas, Colette	8753	S	664	Assoc Professor
Feiring, Bruce R.	8356	S	656	Assoc Professor
Gopinath, C.	1934	S	648	Assoc Professor
Hunt, Neil G.	1939	S	642	Visiting Asst Prof
Jarvis, Edward	8371	S	1221	Clinical Professor
Levesque, Laurie L.	8389	S	6th	Asst Professor
Mambula, Charles J.	8330	S	6th	Asst Professor
Mazen, Magid	8623	S	660	Professor
O'Neill, Regina M.	8393	S	652	Assoc Professor
Ornstein, Suzyn	8374	S	628	Assoc Prof/Chair
Sandell, David A.	8402	S	659	Visiting Professor
Sankowsky, Daniel A.	8375	S	654	Professor
Shelley, Charles J.	8377	S	666	Asst Professor
Vamosi, Nicole M.	8336	S	626	Staff Assistant
<b><u>Marketing</u></b>				
Aydin, Nizamettin	8206	S	727	Assoc Professor
Barker, A. Tansu	8759	S	7th	Visiting Professor
Barretti, Michael L.	8616	S	722	Clinical Asst Prof
McCabe, Catherine Ann	5381	S	721	Asst Professor
Newton, John M.	1940	S	725	Clinical Asst Prof
Rosati, Priscilla Sherid	8651	S	728	Staff Assistant
Ryu, Sungmin	8651	S	724	Asst Professor
Venkatraman, Meera P.	8313	S	726	Assoc Prof/Chair
Wheeler, David R.	8391	S	723	Assoc Professor
<b><u>Math &amp; Computer Science</u></b>				
Cohn, Donald L.	8232	F	637A	Professor
Cook, Edith	8621	F	405	Assoc Professor
Dodge, Jeanne A.	8763	F	636	Dir/Math Support
Ezust, Paul	8601	F	625	Professor/Chair
Hajj, Jack P.	8233	F	516	Professor
Myrvaagnes, Eric R.	8231	F	404	Professor
Peterburgsky, Irina	8702	F	407	Professor
Rodrigues, Kathryn G.	8251	F	621	Staff Assistant
Shi, Fei	8016	F	628	Asst Professor
Shukla, Pradeep K.	8604	F	518	Assoc Professor
Small, Jeffrey T.	1917	F	621	Secretary
Stefanescu, Dan C.	8679	F	637B	Professor
Teixeira, Andrew J.	5398	F	407C	Systems Programmer
Vovan, Tan	8620	F	519	Professor
Zinoviev, Dmitry	1985	F	434	Asst Professor

**Suffolk University**  
**Employee List**  
**By Department**

<u>NAME</u>	<u>EXT</u>	<u>BLDG</u>	<u>ROOM</u>	<u>TITLE</u>
<b><u>MBA Programs</u></b>				
Hallberg, Lillian M.	8306	S	824	Asst Dean
Kiesel, Dina J.	1941	S	826	Program Assistant
<b><u>MIS</u></b>				
Cole, Peter	5376	B	25th	Programmer/Analyst
Curtis, Gregory	8521	S	731	Sr Micro Specialist
Degloria, Paula A.	8662	B	25th	Sr Prog/Analyst
Diguardia, Robert D.	8425	B	25th	Dir Admin Computing
Donarumo, Amanda T.	8422	S	731	Operations Tech
Hom, Vincent M.	8708	S	731	Asst Dir/Computer Op
Ladd, Paul F.	8423	B	25th	Director
Mahoney, William J.	8523	S	731	Asst Director
McGuire, Reynold L.	4277	S	7th	Network/Web Analyst
Mulherin, Catherine M.	8424	B	25th	Programmer/Analyst
Poplawski, Darlene F	8373	B	25th	Programmer/Analyst
Porcello, Peter E	8426	S	731	Dir/Computer Op
Richardson-Delay, Jade	5378	S	7th	PC Specialist
Scott, Susan L.	8586	B	25th	Sr Prog/Analyst
Shaughnessy, Katie E.	8421	B	25th	Manager
Thompson, Abayomi B.	8422	S	7th	Computer Operator
Wark, Andrew P.	8498	S	7th	Sr PC Specialist
Yatim, Fuad	8585	S	731	Dir/NetServ/MicroSys
<b><u>Moakley Archives</u></b>				
Bower, Beth Anne	6255	SGT	515	Archivist
<b><u>Moot Court</u></b>				
Goldberg, Sara L.	8172	SGT	420	Staff Assistant
<b><u>Multi-Disciplinary Studies</u></b>				
Dujardin, Pierre	8719	S	653	Assoc Prof/Coord
McCoy, John D.	8449	S	633	Asst Professor
<b><u>NESAD</u></b>				
Andrade, Paul	1701	ARL	2nd	Instructor
Bartnick, Harry	4287	ARL	2nd	Assoc Professor
Brown, Linda L.	4292	ARL	2nd	Assoc Professor
Brus, Mark	5391	ARL	2nd	Asst Professor
Chadwick, Sara	8785	ARL	2nd	Dir/Admin Svcs
Clarke, Karen	4293	ARL	2nd	Asst Professor
Davis, William	8785	ARL	2nd	Assoc Prof/Chair
Foley, Amanda M.	8785	ARL	2nd	Staff Assistant
Fuchel, Jennifer	4265	ARL	2nd	Assoc Professor
Giuliano, Charles	4283	ARL	2nd	Instructor
Goldman, Kristen	8785	ARL	2nd	Staff Assistant
Goldstein, Audrey	4290	ARL	2nd	Assoc Professor

**Suffolk University  
Employee List  
By Department**

<u>NAME</u>	<u>EXT</u>	<u>BLDG</u>	<u>ROOM</u>	<u>TITLE</u>
<b><i>NESAD Cont.....</i></b>				
Golly, Laura	4267	ARL	2nd	Assoc Professor
Herman, Peter C.	8785	ARL	2nd	Asst Program Dir
John, Suzanne	8785	ARL	2nd	Dir/Inst & Acad Svcs
Josephson, Sara D.	8785	ARL	2nd	Program Assistant
Langdon, Geoffrey M.	1702	ARL	2nd	Asst Professor
Marosek, Wallace	4266	ARL	2nd	Visiting Asst Prof
Martin, Lydia	4288	ARL	2nd	Assoc Professor
Martinez, Leon J.	8785	ARL	2nd	Receptionist
Nichter, Susan	4286	ARL	2nd	Assoc Professor
Novick, Steve	4285	ARL	2nd	Asst Professor
Simonetti, Laureen	8785	ARL	2nd	Receptionist
<b><u>Office of the President</u></b>				
Arguinzoni, Wilma C.	8613	D	2nd	Assoc Director
Artis-Jackson, Sharon	8613	D	2nd	Asst to President
Parker, Jacqueline	8220	B	25th	Sr Admin Associate
Robinson, Bridget L.	8613	D	2nd	Secretary
Sargent, David J.	8220	B	25th	President
Sarkisian, Kristin M.	8220	B	25th	Staff Assistant
Veloria, Carmen N.	(617) 522-6606			Coordinator/Gear-Up
<b><u>On-Line MBA</u></b>				
Maher, Christine M.	5383	S	1142	Asst Director
Perez, Ana M.	8334	S	1142	Staff Assistant
<b><u>Payroll</u></b>				
Demeo-Gay, Pamela	1950	B	25th	Payroll Asst
Holland, Ann Marie	8412	B	25th	Manager
Pagliarulo, Marie E.	8329	B	25th	Payroll Asst
<b><u>Philosophy</u></b>				
Anooshian, Mary K.	8399	A	1st	Staff Assistant
Giancola, Donna M.	8258	A	1st	Assoc Professor
Outwater, Dennis L.	8238	A	1st	Professor
Zuckerstatter, Rudolf	8109	A	1st	Professor
Greenberg, Kenneth	8527	B	25th	Prof/Chair
<b><u>Physical Plant</u></b>				
Adams, Brian	8112	A	183	Assoc Director
Armstrong, Debora L.	8110	A	183	Utility Helper
Armstrong, Robert	8110	A	183	Main Mech
Arsenault, Neldy	8110	A	183	Locksmith
Brown, Micheal A.	8110	A	183	Main Mech
Castrillon, Jonathan	8110	A	183	Utility Helper
Castrillon, Mario	8110	A	183	Painter
Comeau, Richard A.	8110	A	183	Main Mech

**Suffolk University**  
**Employee List**  
**By Department**

<u>NAME</u>	<u>EXT</u>	<u>BLDG</u>	<u>ROOM</u>	<u>TITLE</u>
<i>Physical Plant Cont.....</i>				
Curry, Josiah	8110	A	183	Staff Assistant
Flores, Evaristo A.	8110	A	183	Main Mechanic
Foster, Brian G.	8110	A	183	Main Mechanic
Garzon, Henry	8110	A	183	Main Mechanic
Garzon, Oswaldo	8110	A	183	Main Mechanic
Henebury, Mark	8110	A	183	Director
Lowe, Anthony J.	8110	A	183	Utility Helper
McDermott, Brian J.	8110	A	183	Asst Director
Membreno, Gabriel	8110	A	183	Main Mechanic
Montville, Bruce	8110	A	183	Main Mechanic
O'Gara, Christopher R.	8110	A	183	Utility Helper
Olukotun, Alade	8110	A	183	Main Mechanic
Piazza, Domenic	8110	A	183	Utility Helper
Prezioso, Paul A.	8110	A	-183	HVAC Mechanic
Saldarriaga, Guillermo	8110	A	183	Painter
Salomon, Frantz	8110	A	183	HVAC Mechanic
Sullivan, John R.	8110	A	183	Main Mechanic
Worrick, Leigh	8110	A	183	Main Mechanic
<b>Physics</b>				
Demir, Oktay	8520	A	343	Assoc Professor
Feldman, Frank A.	8618	A	342	Professor
Johnson Jr., Walter H.	8602	A	304	Professor/Chair
Lombardo, Angela M.	1995	A	344	Coord Rad/Therapy
Porter, Johanna B.	8663	A	341	Staff Assistant
Rodin, Eugene	8783	A	361	Instructor
<b>Psychology</b>				
Ajmani, Mandi L.	6361	D	6th	Coordinator
Basseches, Michael	8528	D	6th	Professor
Bursik, Krisanne	8295	D	6th	Professor
Bybee, Jane A.	1923	D	6th	Asst Professor
Durante, Nicole F.	8367	D	6th	Secretary
Gansler, David A.	6397	D	6th	Asst Professor
Harkins, Debra	1926	D	6th	Assoc Professor
Kaplan, Edith	1922	D	6th	Professor
Katz, Harvey A.	8294	D	6th	Professor
LoCicero, Alice	8017	D	6th	Visiting Asst Prof
Moes, Elisabeth J.	6396	D	6th	Asst Professor
Petras, Pamela	1921	D	6th	Staff Assistant
Ray, Sukanya	1920	D	6th	Asst Professor
Sandberg, Elisabeth	8775	D	6th	Assoc Professor
Spritz, Becky L.	6395	D	6th	Asst Professor
Webb, Robert C.	8296	D	6th	Professor/Chair
Wells, Yvonne	8515	D	6th	Assoc Professor

**Suffolk University  
Employee List  
By Department**

<u>NAME</u>	<u>EXT</u>	<u>BLDG</u>	<u>ROOM</u>	<u>TITLE</u>
<b><u>Public Affairs</u></b>				
Decilio, Karen M.	8508	B	25th	Media Coordinator
Ferullo, Anthony D.	8448	B	25th	Assoc Director
Kelleher, Nancy	1909	B	25th	Consultant
Norris, Mariellen	8450	B	25th	Consultant
Sansone, Rosemarie	8428	B	25th	Director
Sina, Amanda C.	8509	B	25th	Public Affairs Asst
<b><u>Public Management</u></b>				
Beinecke, Richard H.	8062	S	1060	Assoc Prof/Chair
Bramson, Ruth A.	1992	S	1046	Asst Professor
Cooper, Clarence A.	8370	S	1032	Assoc Professor
Fortess, Eric E.	8318	S	1038	Assoc Professor
Fuenmayor, Perla D.	8330	S	1045	Admin Coordinator
Gianakis, Jerry A.	8316	S	1047	Assoc Professor
Lavin, Michael T.	8317	S	1026	Asst Dean CC/Asc Prof
Lewis, Sylvia D	8330	S	1042	Staff Assistant
Matava, Marie A.	8024	S	1043	Admin Coordinator
Nucci, John	8330	CC		Instructor
Snow, Douglas	8048	S	1030	Asst Professor
<b><u>Registrar-Colleges</u></b>				
Alexander, Shirley M.	6384	D	3rd	Records Coordinator
Appel, Rachel M.	8434	D	3rd	Registrar's Asst
Deluca, Kelly	8434	D	3rd	Assoc Registrar
Jackson, Eric A.	8435	D	3rd	Assistant Registrar
Lally, Mary M.	8436	D	3rd	Registrar
Lopez, Nohara E.	8433	D	3rd	Registrar's Asst
Meyers, Aeri J.	8758	D	3rd	Assoc Registrar
Polk, Amy E.	6349	D	3rd	Office Coordinator
Shields, John F.	8431	D	3rd	Assistant Registrar
Spooner, Michael T.	8432	D	3rd	Scheduling Coordinat
Taylor, Stacey L.	6385	D	3rd	Assoc Registrar
Turgeon, Michael B.	6353	D	3rd	Registrar's Asst
<b><u>Residence Life</u></b>				
Hoover, Curtis W.	2500	RH	150	Assoc Director
Owen, Maureen	2500	RH	150	Director
Werner, Shannon T.	2500	RH	150	Asst Director
Wise, Diane	2500	RH	150	Office Coordinator
<b><u>Right Question Project</u></b>				
Rothstein, Daniel H.	(617) 496-1900	RQP		Exec Director
Santana, Luz M.	(617) 496-1900	RQP		Dir/Training
<b><u>Sawyer Library</u></b>				
Boyle, Catherine J.	8537	S	2nd	Manager



**Suffolk University**  
**Employee List**  
**By Department**

<u>NAME</u>	<u>EXT</u>	<u>BLDG</u>	<u>ROOM</u>	<u>TITLE</u>
<b><i>Sawyer Library Cont.....</i></b>				
Didriksson, Marjorie Sonia	8532	S	2nd	Sr Ref Librarian
Dugan, Robert E.	8536	S	2nd	Director
Elysse, Sheila J.	8414	S	2nd	Periodicals Tech
Fulweiler, Rebecca D.	8541	S	2nd	Asst Director
Gianetta, Michael D.	8537	S	2nd	Evening Supervisor
Hartman, Paula A.	8427	S	2nd	Library Asst
Maior, Kathleen L.	8532	S	2nd	Asst Director
Mulherin, Andrew J.	8063	S	2nd	A & C Technician
Rivera, Alfonso	8535	S	2nd	Library Asst
Sellers, Connie L.	8532	S	2nd	Sr Ref Librarian
Sklaver, Ellen S.	4282	ARL	2nd	Manager
Tynemouth, Brian	4284	ARL	2nd	AstDir/Lib/PC/NESAD
Victoria, Stephanie	8535	S	2nd	Library Asst
Yen, Ellen Y.	8532	S	2nd	Sr Ref Librarian
<b><u>Second Language Services</u></b>				
Foley-Vinay, Linda A.	8677	AP	1st	Director
Leyva-Hernandez, Melba	8677	AP	1st	Program Assistant
Oliver, Janet	8677	AP	1st	Coordinator/SLS
Pascale, Elaine L.	8677	AP	1st	Asst Director
<b><u>Sociology</u></b>				
Agigian, Amy C.	8487	T	32A	Asst Professor
Bachi, Allison	8485	T	22A	Secretary
Boyes-Watson, Carolyn	8085	T	33	Assoc Professor
Fama, Janice	8485	T	12	Staff Assistant
Garcia, Luis	1970	T	B7	Asst Professor
Holley, John C.	8496	T	11B	Assoc Professor
Kurtz, Sharon R.	8488	T	32B	Assoc Professor
Manning, Geraldine A.	8694	T	21	Assoc Professor
Morton, Donald R.	8494	T	22B	Assoc Professor
Norton Hawk, Maureen	8491	T	11A	Assoc Professor
Ptacek, James G.	8047	T	31	Assoc Professor
Spitzer, Steven	8489	T	23	Professor
Todd, Alexandra D.	8495	B	25th	Professor/Chair
Topitzer, Robert J.	8490	T	B1	Assoc Professor
Wiltz, Felicia P.	4295	T	41	Asst Professor
<b><u>SOULS Office</u></b>				
Sawyer, Kathryn	6306	D	5th	Jump Start Site Manager
<b><u>SSOM Technology Management</u></b>				
Chin, Jennifer	8664	S	531	Assoc Director
Gordon, Dahlia	8524	S	525	PC Specialist

**Suffolk University**  
**Employee List**  
**By Department**

<u>NAME</u>	<u>EXT</u>	<u>BLDG</u>	<u>ROOM</u>	<u>TITLE</u>
<b><i>SSOM Tech Mngt Cont.....</i></b>				
Machettira, Praneeth P.	5373	S	530	E-Lrng Web Analyst
Nelson, Teresa E.	8338	S	527	Acting Director
She, Voon Keat	8720	S	547	Network/Web Analyst
Velasquez, Maria R.	8661	S	529	Acad Computing Spec
<b><u>Student Accounts/Bursar</u></b>				
Aresco, Nicole M.	8407	D	3rd	Cashier
Barry, Dorothy J.	8407	D	3rd	Student Accts Rep
Clinton, Regina E.	8407	D	3rd	Asc Bursr/Tech Supp
Dinon, Loretta A.	8407	D	3rd	Managing Assc Bursar
Fleck, Paula	8791	D	3rd	Bursar
Iebba, Antonietta	8407	D	3rd	Accounts Rec Mgr
Luu, Danny T.	8407	D	3rd	Student Accts Rep
Medina, Dawn Marie	8407	D	3rd	Assistant Bursar
Tzimirangas, Rita G.	8409	D	3rd	Manager
<b><u>Student Activities</u></b>				
Counts, Angela M.	8320	D	529	Asst Director
French, Amy K.	6306	D	529	Asst Director
McHugh, Daniel	8320	D	529	Assoc Director
Valente, Aurelio M.	8320	D	529	Director
Young, Katherine L.	6307	D	529	Staff Assistant
<b><u>Theatre Arts</u></b>				
Chin, Wayne	8282	A	6th	Asst to Tech Dir
Finn, Matthew J.	8282	A	6th	Secretary
Kaufman, James A.	5351	A	6th	General Manager
Plotkins, Marilyn	8282	A	6th	Professor/Chair
Rua, Colleen L.	5359	A	6th	Theatre Coordinator
Savick, Wesley A.	5358	A	6th	Asst Professor
Turner, Erin E.	1713	A	6th	Technical Director
<b><u>UMS</u></b>				
Boston, Ron	1627	SGT	330	Coordinator
Canales, Alisa R.	1906	B	25th	Staff Assistant
Comeau, George T.	1625	SGT	330	Managing Assoc Dir
Connell, Timothy P.	8484	S	908	Coordinator
De-La-Rosa, Ianka R.	8288	A	481	Graphic Designer
Hagg, Christine L.	8080	A	481	Graphic Designer
MacDonald, Anne E.	1989	R	302	Web Services Manager
Medina, Sarah P.	8032	A	481	Pub Project Mgr
O'Hanlon, Patrick J.	1600	SGT	330	Coordinator
Palmer, Tracey	8098	A	481	Writer/Editor
Pearson, Derek M.	8484	S	908	Asst Director

**Suffolk University**  
**Employee List**  
**By Department**

<u>NAME</u>	<u>EXT</u>	<u>BLDG</u>	<u>ROOM</u>	<u>TITLE</u>
<b><i>UMS Cont.....</i></b>				
Profera, Nancy	1936	A	481	Writer/Editor
Romer, Sara	8098	A	481	Writer/Editor
Ross, Jennifer Hanley	1937	B	25th	Graphic Designer
Schneider, Michael J.	1735	R	303	Web Analyst
Smith, Stephen R.	1626	SGT	330	Asst Director
Stephens, Susan Witt	8031	A	481	Graphic Designer
Walcott, William S.	8244	D	235	Asst Director
Wilcke, Marilyn	8167	B	25th	Director
<b><u>Undergraduate Admission</u></b>				
Aversa, Jeanne M.	8460	CL	4th	Assoc Director
Blevins, Anne	8460	CL	4th	Assoc Director
Depeiza, Lorraine C.	8460	CL	4th	Sr Admission Asst
Fine, Nancy J.	8460	CL	4th	Managing Assoc Dir
Greenwald, Louis R.	8460	CL	3rd	Asst Director
Hernandez, Maribel	8460	CL	3rd	Admission Coord
Leyva, Viviana M.	8460	CL	3rd	Admission Asst
Martin, Angela F.	8460	CL	3rd	Admission Asst
Melendez, Iris	8460	CL	4th	Admission Asst
Montrym, Kelly R.	8460	CL	4th	Asst Director
Peguero, Julissa M.	8460	CL	4th	Admission Asst
Saintiche, Gusty	8460	CL	4th	Admission Asst
Schulze, James	8460	CL	3rd	Assoc Director
Taylor, Mia	8460	CL	3rd	Appointments Coord
Velez, Yvette C.	8460	CL	3rd	Counselor
Walsh, Joseph F.	8460	CL	3rd	Assoc Director
<b><u>University Police</u></b>				
Beaudette, Joseph G.	8333	D	1st	Security Officer
Bellino, Joseph R.	8333	D	1st	Officer
Birmingham, Adam	8333	D	1st	Security Officer
Bourque, Corin K.	8333	D	1st	Security Officer
Brown, Maureen	8333	D	1st	Crime Prev Officer
Cambronne, Huguette	8333	D	1st	Security Officer
Chickering, Janice M.	8333	D	1st	Security Officer
Curran, Paul	8333	D	1st	Corporal
Davis, James L.	8333	D	1st	Corporal
Deegan, Rory D.	8333	D	1st	Security Officer
Depeiza, Frederick	8333	D	1st	Security Officer
Derival, Mackenzie	8333	D	1st	Security Officer
Dibiasi, Christopher M.	8333	D	1st	Officer
Dibiasi, Philip	8333	D	1st	Sergeant
Grande, Gregory M.	8333	D	1st	Operations Officer
Hernandez, Darwin O.	8333	D	1st	Sergeant
Hing, Sidarith B.	8333	D	1st	Officer
Iacobucci, Rocco	8333	D	1st	Security Officer

**Suffolk University  
Employee List  
By Department**

<u>NAME</u>	<u>EXT</u>	<u>BLDG</u>	<u>ROOM</u>	<u>TITLE</u>
<b><i>University Police Cont.....</i></b>				
Johnson, Tyrone	8333	D	1st	Corporal
Kalia, Aman	8333	D	1st	Security Officer
Klian, Aykaz	8333	D	1st	Officer
Knowles, Matthew E.	8333	D	1st	Security Officer
Legaspi, Exxon N.	8333	D	1st	Officer
Marks, Anthony P.	8333	D	1st	Security Officer
Matthews, Bryan J.	8333	D	1st	Officer
McCartney, Michael J.	8333	D	1st	Officer
Moquete, Edward A.	8333	D	1st	Officer
Nunez, Ramon	8333	D	1st	Sergeant
O'Brien, Sean G.	8333	D	1st	Officer
Ong, Trong	8333	D	1st	Officer
Pagliarulo, John	8115	S	A17	Chief
Phaen, Darren S.	8333	D	1st	Security Officer
Pierre-Francois, Nadia	8333	D	1st	Security Officer
Piscitelli, Pasquale A	8333	D	1st	Security Officer
Ryan, Michael K.	8580	S	A 03	Lieutenant
Ryberg, Christopher T.	8333	D	1st	Security Officer
Schneider, Edward C.	8333	D	1st	Security Officer
Sharif, Mohammed S.	8333	D	1st	Security Officer
Terrero, Roberto	8333	D	1st	Officer
Thomas, Stanley	8333	D	1st	Security Officer
Toussaint, Donald	8333	D	1st	Sergeant
Trowers, Lorraine	8333	D	1st	Security Officer
Valentin, Pedro J.	8333	D	1st	Security Officer
Vargas, Paul D.	8333	D	1st	Security Officer
White, Walter J.	8333	D	1st	Security Officer
Woldie-Abegaz, Sinidu	8333	D	1st	Security Officer
<b><u>University Safety Office</u></b>				
Mazziotta, Michael R.	8628	A	183C	Univ Safety Officer
<b><u>Vice Pres-Treas Office</u></b>				
Flannery, Francis X.	8400	B	25th	Vice Pres - Treas
Joyce, Phyllis A.	8401	B	25th	Sr Admin Associate
<b><u>Visionaries Institute</u></b>				
Gregg, Richard H.	(413) 229-0350	VI		Exec Director
Hidell, Tricia	4246	S	12th	Coordinator
Mosher, William	(413) 229-0350	VI		President
<b><u>Voice Communications</u></b>				
Albanese, Venus	8499	S	1st	Campus Card Coord
Petrucci, Andrea	8020	S	1st	Voice Comm Coord
Scherban, Jane E.	8299	S	1st	Manager
Sirignano, Amanda	4240	S	1st	Telecomm Asst/Operator





## INTERPRETERS AVAILABLE AT SUFFOLK UNIVERSITY

<u>Languages</u>	<u>Employees</u>	<u>Department</u>	<u>Ext</u>
Arabic, Turkish, French	Hinnawi, Youmna	Center for International Education	8072
Bengali	Rahman, Mawdudur	Online Programs	8372
Chinese	Shi, Fei	Math & Computer Science	8016
Dutch, French	DuJardin, Pierre	Deans/SSOM	8719
French	Blevins, Ann	Undergraduate Admission	8460
French	Haussman, Melissa	Government	8506
French	Thureau-Gray, Lisa	Juvenile Justice Center	3207
French, Haitian Creole	Salvodon, Marjorie	Humanities & Modern Languages	8582
French, Russian	Guilar, Joshua	Communications and Journalism	8767
French, Spanish	Holland, Ann Marie	Payroll	8412
Greek	Syrigos, George	Development	8451
Hebrew	Shaw, Lewis	Accounting	8205
Hindu, Punjabi	Jaggia, Sanjiv	Economics	8023
Icelandic, German	Didrikson, Sonia	Sawyer Library	8532
Indian	Kalia, Aman	University Police	8333
Indian	Sarkisian, Kristin	Office of President	8220
Italian	Iebba, Annette	Student Accounts	8407
Italian	Joyce, Phyllis	VP/Treasurer	8400
Italian	Fazzino, Lusiella	Law Library	1606
Italian	Nazzaro, Linda	Corporate Education	8784
Italian	Zanzi, Alberto	Management	8358
Italian	Conte, Frank	Beacon Hill Institute	8050
Khmer, Cambodian	Phaen, Darren	University Police	8333
Korean	Baek, In-Mee	Economics	8376
Lithuanian	Ciuryla, Joseph	Chemistry	1927
Persian	Mohtadi, Shahruz	Economics	8670
Portuguese	Cole, Peter	MIS	5376
Portuguese	Valente, Aurelio	Student Activities	8320
Portuguese	Alvarez, Pauline	Deans/CAS	8265
Portuguese	Felt, Jucimara (Mara)	Law School	8164
Russian	Davison, Elena	Law	6286
Russian	Perov, Polievkt	Elec & Comp Engineer	8276
Russian	Ilin, Mikhail	CIS	8331
Spanish	James-Leyva, Susan	Enrollment/Retention	8647
Spanish	Puello, Rosa	Law School	8197
Spanish	Leyva, Viviana	Undergraduate Admission	8460
Spanish	Garni, Kenneth	Counseling Center	8219
Spanish	Leyva-Hernandez, Melba	Second Language Services	8677
Spanish	Lopez, Nohara	Registrar's Office	8433
Spanish	Leyva, Susan	Enrollment	8647
Spanish	Werner, Shannon	Residence Life	2500
Spanish	Arguinzoni, Wilma	Office of Multicultural Affairs	8613
Spanish	Moquete, Edward	University Police	8333
Spanish	Leyva-Hernandez, Maribel	Undergraduate Admission	8460
Spanish	Valentin, Pedro	University Police	8333
Spanish	Royo, Sebastian	Government	8343
Spanish	Fuenmayor, Perla	Public Administration	8330
Spanish	Medina, Carol	Deans/SSOM	1705
Tamil, Hindi	Gopinath, C.	Management	1934
Vietnamese	Truong, Alyssa	Economics	8259
Vietnamese	Pham, Julie	Deans/SSOM	8665
Yourba (Nigerian)	Thompson, Abayomi	MIS	(617) 287-6282

